



Count on it.

Parts Catalog

**Commercial Walk-Behind Mower
Floating Deck T-Bar Hydro with 52in TURBO
FORCE® Cutting Unit**

Model No. 30499—Serial No. 280001101 and Up

Ordering Replacement Parts

To order replacement parts, please supply the part number, the quantity, and the description of each part desired.

Understanding Reference Numbers

Each identified part in an illustration has a reference number. The reference number for a part also appears in the parts list, along with other information about the part.

This catalog uses two special reference number formats, one to indicate parts in a service assembly and another to indicate the quantity of a given part in an illustration.

Service Assembly Reference Numbers

Parts in service assemblies have reference numbers in the form a:b. The a represents the reference number of the entire service assembly and the b represents a sequential number unique to each part within the service assembly.

For example, a wheel assembly might be identified by reference number 6, the tire by 6:1, the valve by 6:2, and the wheel by 6:3. When you order the assembly identified by reference number 6, you receive all parts identified by reference numbers 6:1, 6:2, and 6:3. However, you may also order any part individually. Reference numbers of this type appear in illustration and in parts lists.

Reference Numbers Indicating Quantity

In an illustration, if a reference number indicates more than one part, the reference number has the form nX y. The n represents the quantity of the part, the X is the multiplication symbol, and the y represents the reference number.

For example, in an illustration, the reference number 2X 37 means that two of the parts identified by reference number 37 are indicated.

List of Abbreviations

AR: as required

ASM: assembly

BBC: blade brake control

BHTF: button head thread forming

CARR: carriage

CCW: counter clockwise

CW: clockwise

DEG: degrees

ECM: electronic control module

EXT: external

FH: flat head

GA: gauge

HD: heavy-duty

HF: hex flange

HH: hex head

HHF: hex head flange

HHFTF: hex head flange thread forming

HJ: hex jam

HLH: hex lag head

HOC: height-of-cut

HSBH: hex socket button head

HSFH: hex socket flat head

HSH: hex socket head

HWH: hex washer head

HWHTF: hex washer head thread forming

HYD: hydraulic

LH: left hand

NI: nylon insert

NPTF: national pipe thread fine

PFH: phillips flat head

PPH: phillips pan head

PPHTF: phillips pan head thread forming

PRH: phillips round head

PTH: phillips truss head

PTO: power-take-off

RH: right hand

ROPS: roll-over protection system

RRB: rear roller brush

SFH: slotted fillister head

SHH: slotted hex head

SHWH: slotted hex washer head

SPH: slotted pan head

SQH: square head

SRH: slotted round head

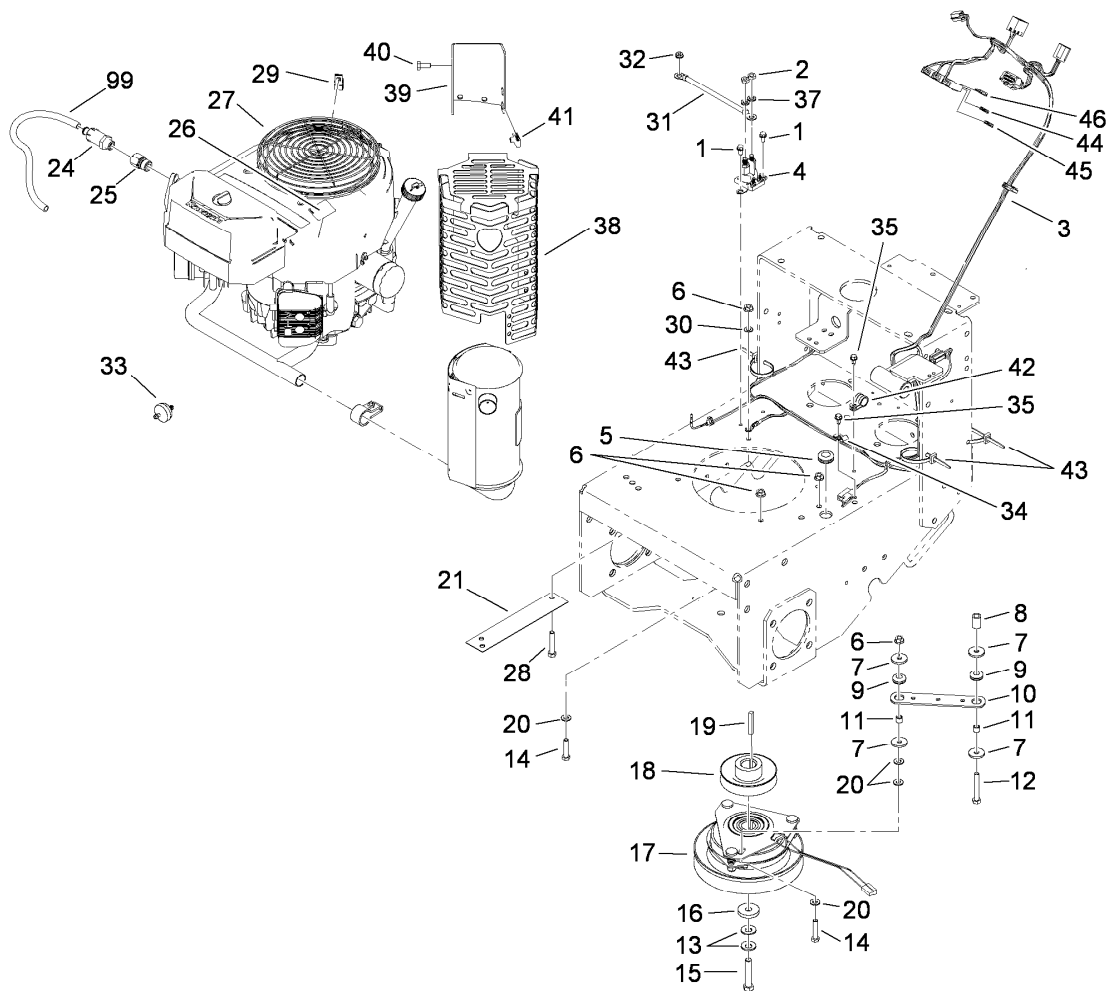
STD: standard

TAP: self tapping

TTH: torx truss head

Contents

Engine and Clutch Assembly	4
Fuel System, Hydraulic Pump and Filter Assembly	5
Hydraulic Pump Assembly No. 115-4480	6
Hydraulic Pump Assembly No. 115-4481	7
Pump Drive and Wheel Assembly	8
Hydraulic Motor Assembly 104-1171	9
Lower Control Assembly	10
Hydraulic Hose Assembly	11
Upper Control Assembly	12
Control Panel Assembly	13
Battery Assembly	14
Parking Brake Assembly	15
Power-Take-Off Idler and Weight Assembly	16
Carrier Frame Assembly	17
Deck Drive and Baffle Assembly	18
Deck Assembly No. 112-7083	19
Spindle Assembly No. 110-0728	20
Spindle Assembly No. 110-0730	21
Lever Assembly No. 107-1664	22
Deck Assembly	23
Deflector Assembly No. 110-0758	24
Cylinder and Crankcase Assembly Kawasaki FH580V-FS28	25
Piston and Crankshaft Assembly Kawasaki FH580V-FS28	26
Valve and Camshaft Assembly Kawasaki FH580V-FS28	27
Lubrication Equipment Assembly Kawasaki FH580V-FS28	28
Cooling Equipment Assembly Kawasaki FH580V-FS28	29
Electric Equipment Assembly Kawasaki FH580V-FS28	30
Control Equipment Assembly Kawasaki FH580V-FS28	31
Carburetor Assembly Kawasaki FH580V-FS28	32
Air Filter and Muffler Assembly Kawasaki FH580V-FS28	33
Fuel Tank and Valve Assembly Kawasaki FH580V-FS28	34
Starter Assembly Kawasaki FH580V-FS28	35
Label Assembly Kawasaki FH580V-FS28	36
Attachments and Accessories	37



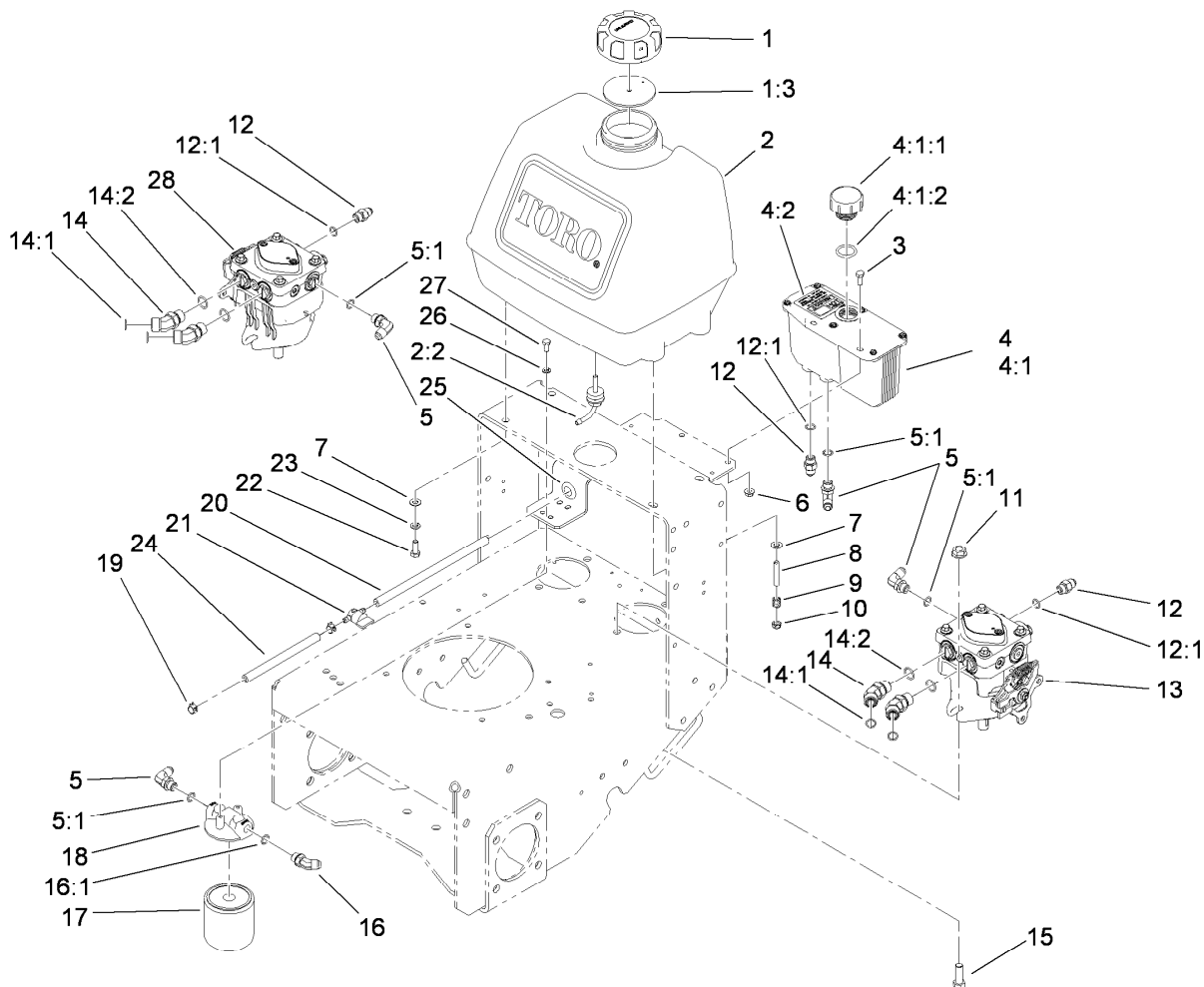
Engine and Clutch Assembly

Ref.	Part Number	Qty.	Description
1	32144-4	2	Screw-HWH
2	3220-2	2	Nut-Jam
3	115-4191	1	Harness-Wire
4	1-513075	1	Switch-Solenoid
5	112-7069	1	Grommet
6	32128-20	6	Nut-HF
7	1-613235	4	Washer
8	104-6373	1	Tube-Retainer
9	1-633630	2	Grommet-Brake
10	1-633543-03	1	Strap-Clutch, Brake
11	1-633545	2	Spacer
12	322-11	1	Screw-HH
13	1-603610	2	Washer-Spring
14	322-7	4	Screw-HH
15	3212-9	1	Screw-HH
16	107-4136	1	Washer
17	105-2635	1	Clutch / Brake ASM
18	44-5940	1	Pulley
19	608006	1	Key-Square
20	3256-23	5	Washer-Flat
21	94-5847-01	1	Cover-Pulley
24	92-6877	1	Valve-Drain, Oil
25	103-1966	1	Adapter

Ref.	Part Number	Qty.	Description
26	106-0699	1	Decal-Warning
27		1	Engine-Kawasaki, FH580V-Fs28 ●■
28	322-9	1	Screw-HH
29	2412-87	1	Clamp-Cable
30	3255-8	1	Washer-Lock
31	112-9707	1	Cable-Battery, Pos
32	32149-2	1	Nut-Keps
33	56-6360	1	Filter-Fuel
34	2412-72	1	Clip-Closed, Insulated
35	12-3270	2	Screw
37	3253-4	2	Washer-Lock
38	115-4150-03	1	Muffer Shield ASM
39	115-4154-03	1	Bracket-Muffer
40	322-3	4	Screw-HH
41	94-2413	4	U-Nut
42	2412-134	1	Clamp-R
43	3290-378	3	Tie-Cable
44	109102	1	Fuse-25 Amp
45	109103	1	Fuse-30 Amp
46	218-578	1	Fuse-10 Amp
99	103-1964	1	Hose-Drain, Oil

● Not serviced separately

■ Obtain parts from www.kawpowerepc.com

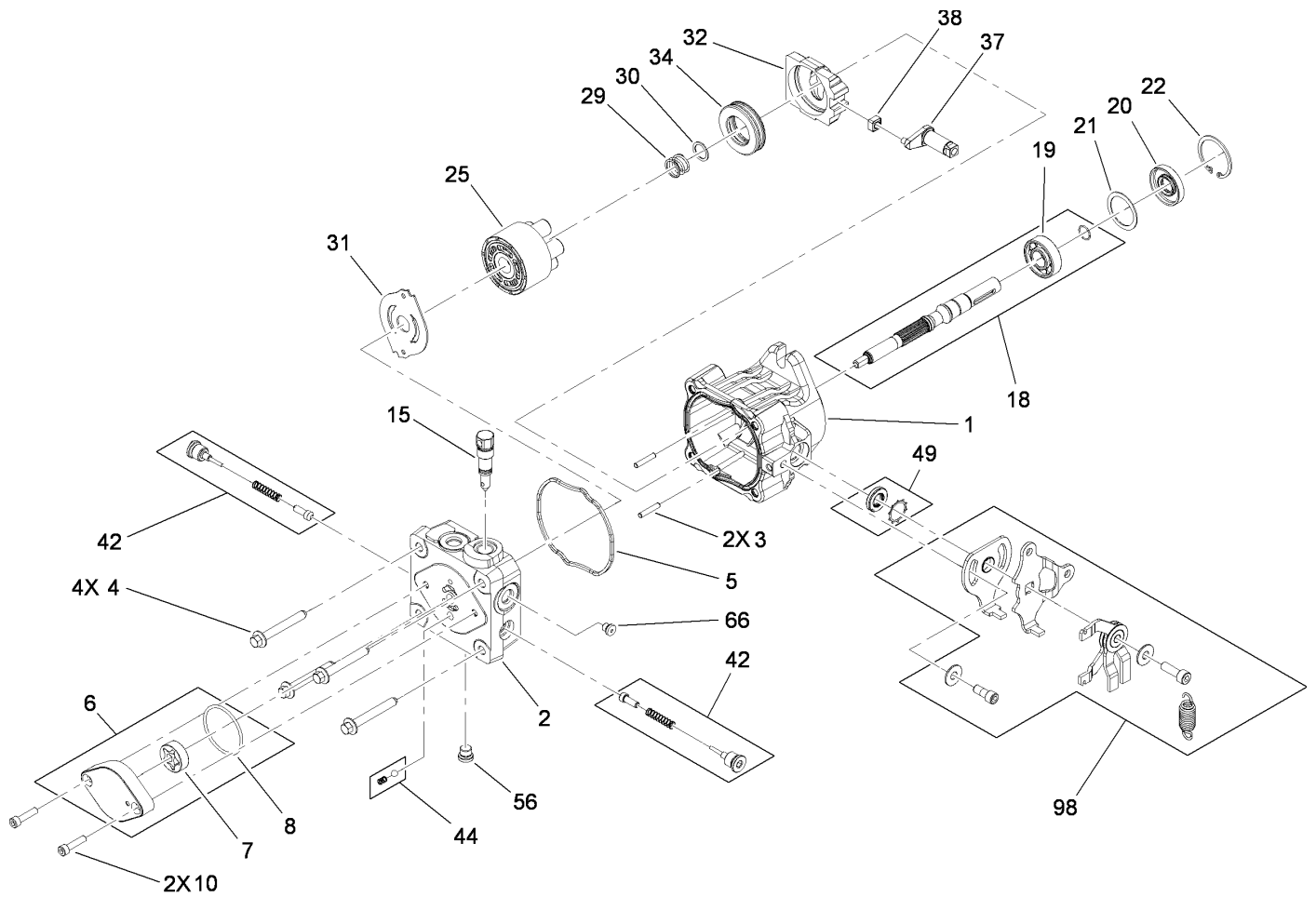


Fuel System, Hydraulic Pump and Filter Assembly

Ref.	Part Number	Qty.	Description
1	88-3980	1	Gas Cap ASM
1:3	88-4010	1	Gasket-Cap, Gas
2	106-0730	1	Fuel Tank ASM
2:2	103-2605	1	Fitting-Fuel, Bulkhead
3	321-4	2	Screw-HH
4	107-8433	1	HYD Reservoir ASM
4:1		1	Reservoir-HYD ●
4:1:1	103-1948	1	Cap-Reservoir, HYD
4:1:2	103-1949	1	Gasket-Cap
4:2	115-4212	1	Decal-Warning
5	353-374	4	Elbow-90 DEG
5:1	237-42	1	O-Ring
6	32128-33	2	Nut-HF
7	3256-23	4	Washer-Flat
8	104-8121	2	Stud-Threaded
9	1-633349	2	Spring-Tank, Fuel
10	3296-47	2	Nut-Lock, NI
11	32128-42	4	Nut-HF
12	353-384	3	Fitting-Straight
12:1	237-42	1	O-Ring

Ref.	Part Number	Qty.	Description
13	115-4480	1	Pump-Hydraulic
14	340-101	4	Fitting-HYD, 45 DEG
14:1	237-30	1	O-Ring
14:2	237-79	1	O-Ring
15	324-5	4	Screw-HH
16	353-212	1	Fitting-HYD, 45 DEG
16:1	237-42	1	O-Ring
17	1-633750	1	Filter-Oil, HYD
17	1-633752	1	Filter-HYD, Winter
18	104-7836	1	Head-Filter
19	2412-98	4	Clamp
20	110-4894	1	Hose-Fuel
21	1-603770	1	Valve-Fuel
22	322-4	2	Screw-HH
23	3253-4	2	Washer-Lock
24	107-0588	1	Hose-Fuel
25	112-7069	1	Grommet
26	3253-3	2	Washer-Lock
27	321-3	2	Screw-HH
28	115-4481	1	Pump-Hydraulic

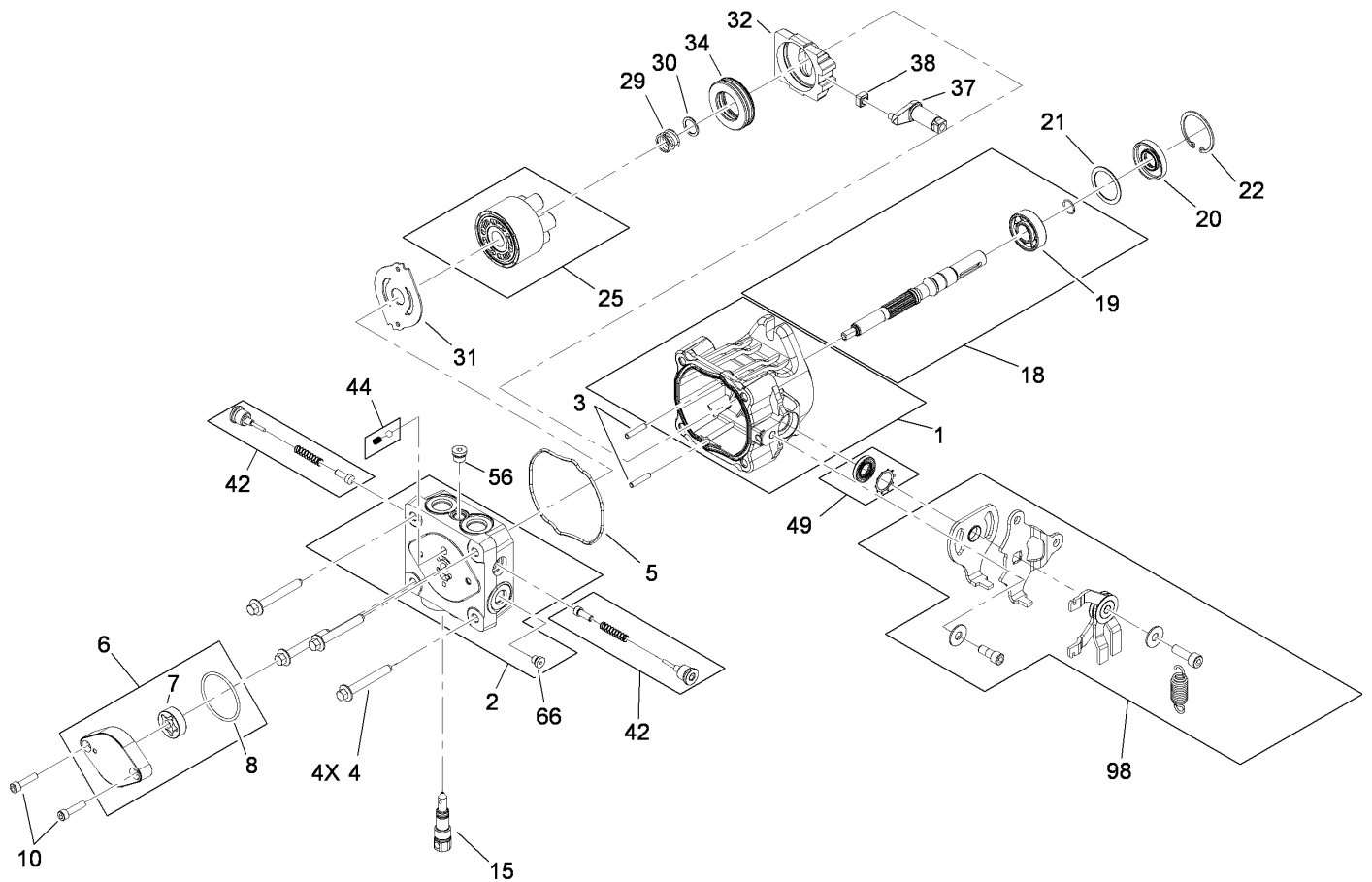
● Not serviced separately



Hydraulic Pump Assembly No. 115-4480

Ref.	Part Number	Qty.	Description	Ref.	Part Number	Qty.	Description
1	115-4464	1	Housing Kit	29	94-1936	1	Spring-Block
2	106-8752	1	End Cap Kit (W/Poppets)	30	94-1937	1	Washer-Thrust, Block
3	106-8753	2	Pin-Headless, Straight	31	105-6185	1	Plate-Valve
4	106-8754	4	Bolt-HF	32	94-1907	1	Swashplate-Variable
5	106-8755	1	O-Ring	34	94-6922	1	Bearing-Thrust
6	106-8756	1	Charge Pump Kit	37	115-4458	1	Arm-Trunnion, Tapered Square
7	104-2122	1	Gerotor ASM	38	94-1910	1	Guide-Slot
8	106-8757	1	O-Ring	42	98-3252	2	Valve-Check (W/Poppet)
10	104-2111	2	Capscrew	44	106-8760	1	Charge Relief Valve Kit
15	106-8759	1	Bypass Valve Kit	49	114-8155	1	Trunnion Seal Kit
18	103-2664	1	Input Shaft Kit	56	106-8762	1	Plug-HSH
19	104-5311	1	Bearing-Ball	66	106-8763	1	Plug-HSH
20	104-5310	1	Seal-Lip	98	115-4459	1	Kit-Return
21	104-5308	1	Spacer	99	105-6184	1	Seal Overhaul Kit ●
22	104-5309	1	Ring-Retaining				
25	103-2666	1	Cylinder Block Kit				

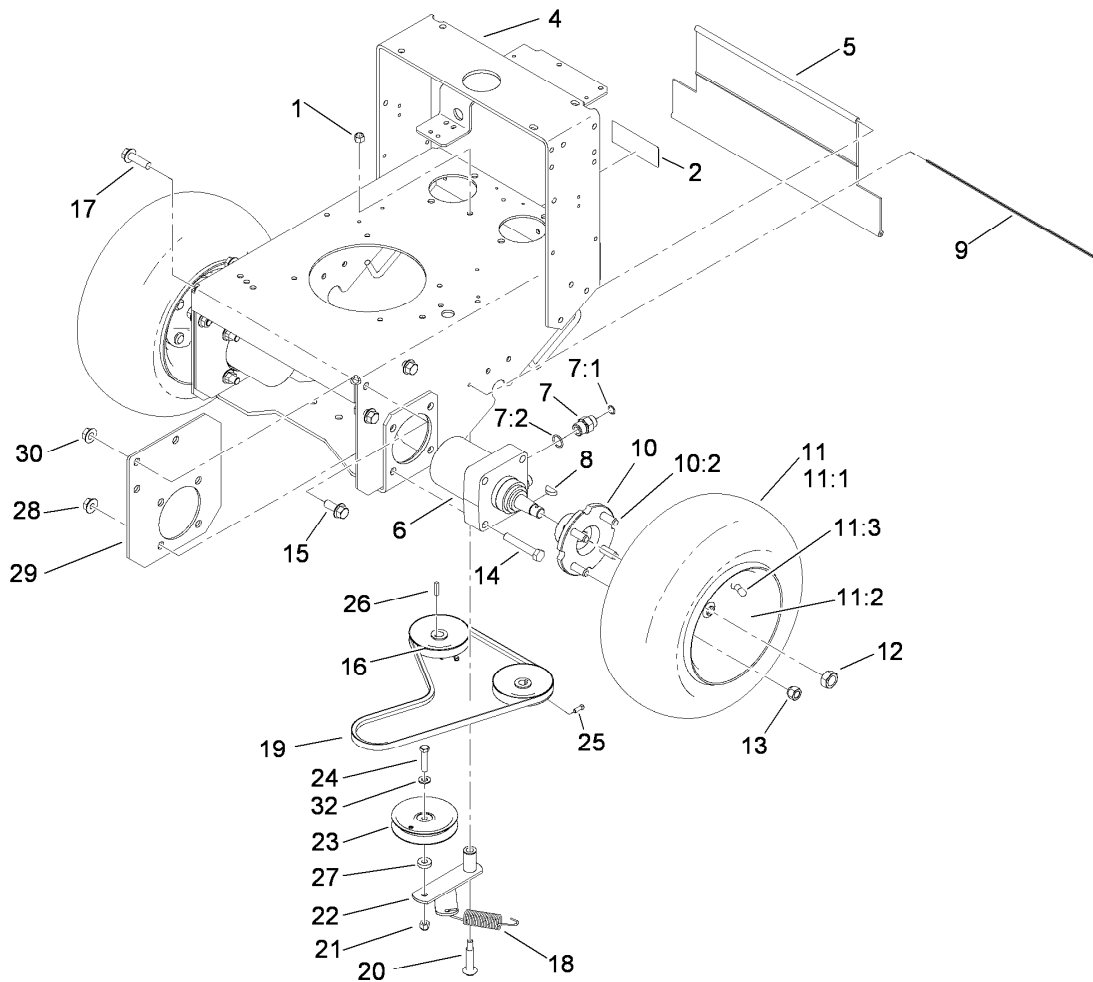
● Not illustrated



Hydraulic Pump Assembly No. 115-4481

Ref.	Part Number	Qty.	Description	Ref.	Part Number	Qty.	Description
1	115-4464	1	Housing Kit	29	94-1936	1	Spring-Block
2	106-8752	1	End Cap Kit (W/Poppets)	30	94-1937	1	Washer-Thrust, Block
3	106-8753	2	Pin-Headless, Straight	31	105-6185	1	Plate-Valve
4	106-8754	4	Bolt-HF	32	94-1907	1	Swashplate-Variable
5	106-8755	1	O-Ring	34	94-6922	1	Bearing-Thrust
6	106-8756	1	Charge Pump Kit	37	115-4458	1	Arm-Trunnion, Tapered Square
7	104-2122	1	Gerotor ASM	38	94-1910	1	Guide-Slot
8	106-8757	1	O-Ring	42	98-3252	2	Valve-Check (W/Poppet)
10	104-2111	2	Capscrew	44	106-8760	1	Charge Relief Valve Kit
15	106-8759	1	Bypass Valve Kit	49	114-8155	1	Trunnion Seal Kit
18	103-2664	1	Input Shaft Kit	56	106-8762	1	Plug-HSH
19	104-5311	1	Bearing-Ball	66	106-8763	1	Plug-HSH
20	104-5310	1	Seal-Lip	98	115-4459	1	Kit-Return
21	104-5308	1	Spacer	99	105-6184	1	Seal Overhaul Kit ●
22	104-5309	1	Ring-Retaining				
25	103-2666	1	Cylinder Block Kit				

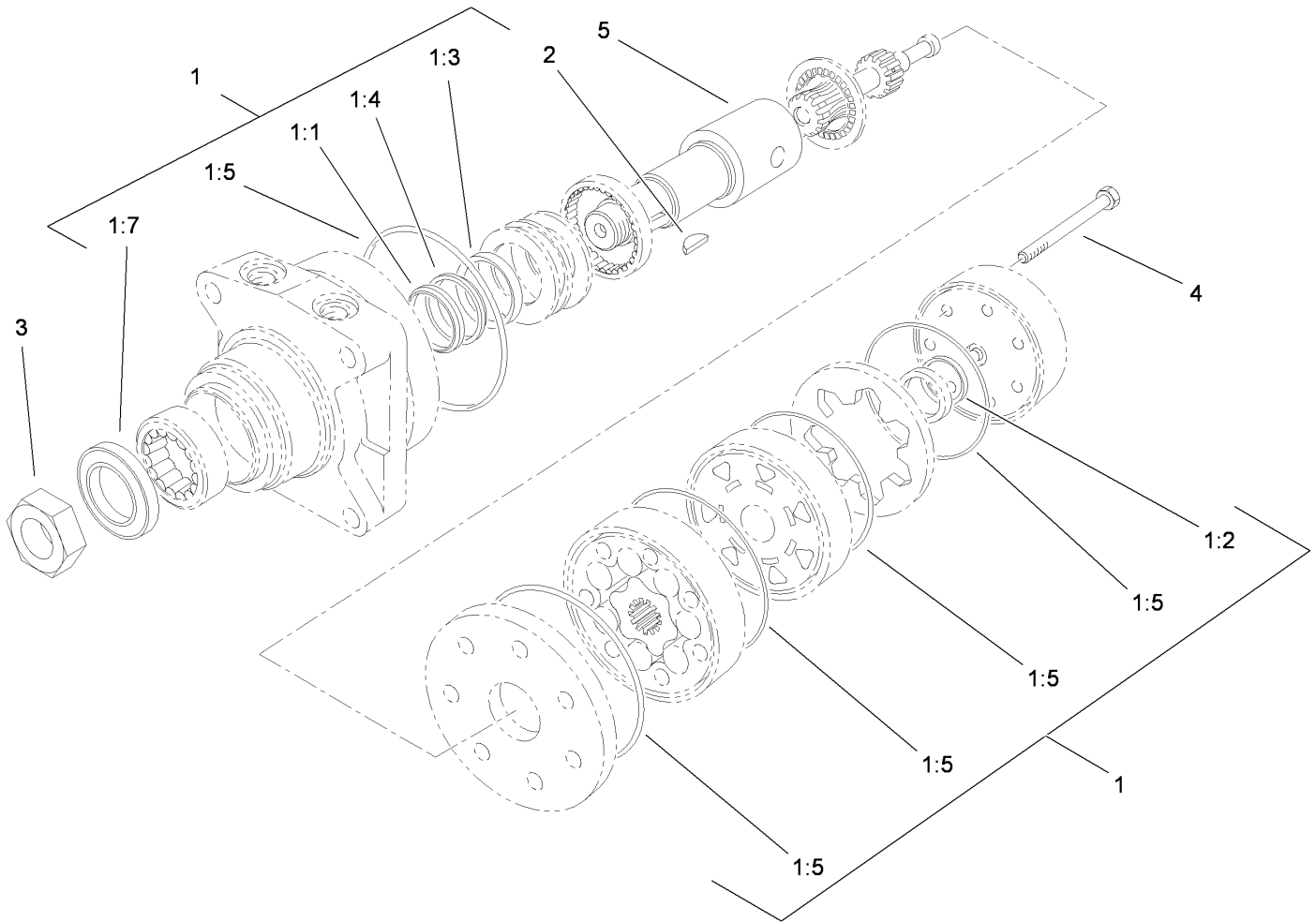
● Not illustrated



Pump Drive and Wheel Assembly

Ref.	Part Number	Qty.	Description
1	3296-6	1	Nut-Lock
2	98-0776	1	Decal-Caution
4	114-0222-01	1	Frame ASM
5	95-1526	1	Shield-Trailing
6	104-1171	2	Motor-Wheel
7	340-6	4	Fitting-HYD, Straight
7:1	237-30	1	O-Ring
7:2	237-80	1	O-Ring
8	3257-8	2	Key-Woodruff
9	95-1529	1	Rod-Shield
10	105-0800	2	Wheel Hub ASM
10:2	10-6830	4	Stud-Type, Drive
11	104-1198	2	Wheel And Tire ASM
11:1	104-6320	1	Tire
11:2	104-1199	1	Wheel
11:3	232-27	1	Stem-Valve
12	85-7310	2	Nut-Motor, Wheel
13	242-50	8	Nut-Lug

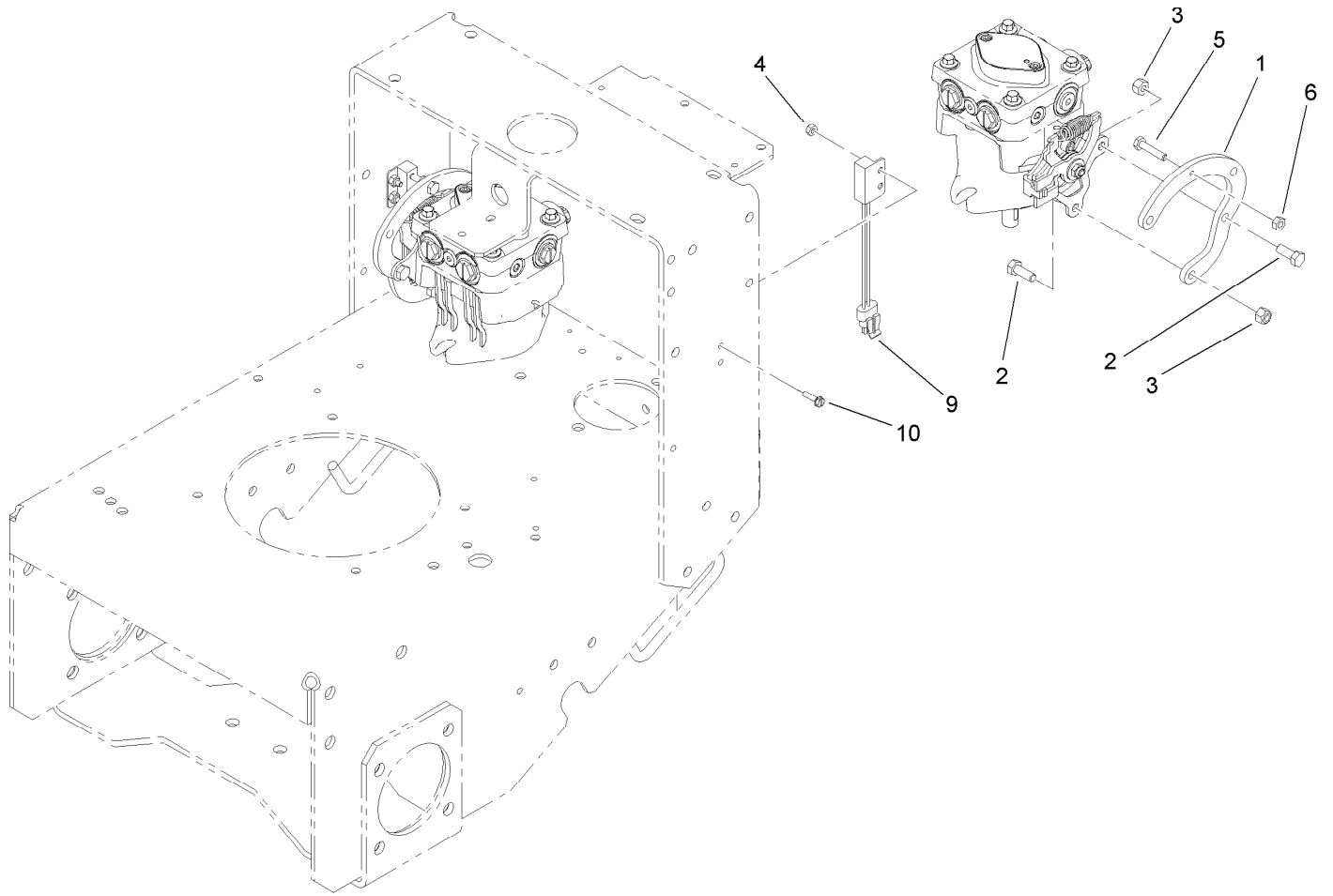
Ref.	Part Number	Qty.	Description
14	325-12	8	Screw-HH
15	3234-32	4	Screw-HHF
16	105-5648	2	Pulley-Pump
17	3234-22	2	Screw-HHF
18	68-9950	1	Spring-Traction
19	110-5049	1	Belt-V
20	27-6230	1	Bolt-Wheel
21	3296-39	1	Nut-Lock, NI
22	86-4770	1	Idler Lever ASM
23	93-1622	1	Pulley-Idler
24	323-9	1	Screw-HH
25	3241-5	4	Screw-Set
26	1-807272	2	Key
27	9202204	1	Washer
28	32128-49	8	Nut-HHF
29	108-6657-01	2	Plate-Frame
30	32128-23	6	Nut-HF
32	3256-24	1	Washer-Flat



Hydraulic Motor Assembly 104-1171

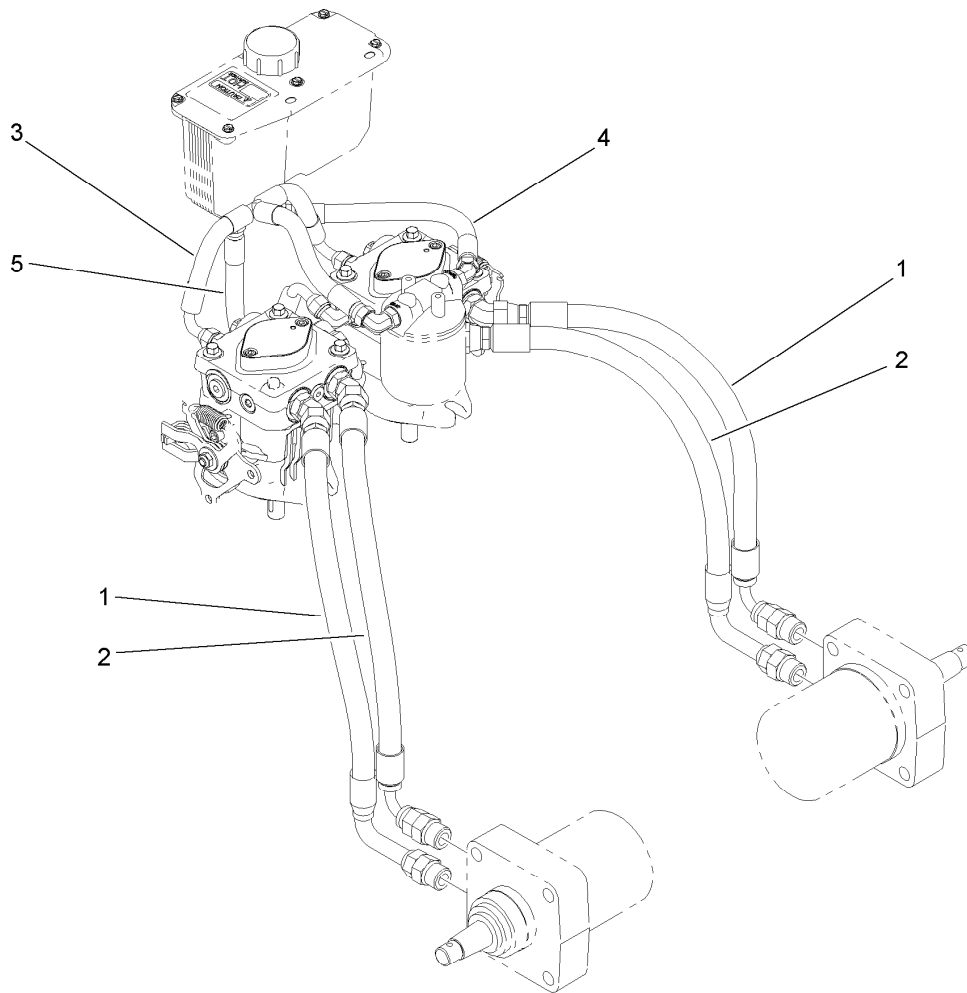
Ref.	Part Number	Qty.	Description
1	1-000119	1	Seal Kit
1:1		1	Ring-Back Up ●
1:2		1	Seal-Commutator ●
1:3		1	Seal-Shaft (Viton) ●
1:4		1	Washer-Back Up, Steel ●
1:5		5	Ring-Seal (Viton) ●
1:7		1	Seal-Dirt And Water ●
2	3257-8	1	Key-Woodruff
3	85-7310	1	Nut-Motor, Wheel
4	106-5549	6	Bolt-Special
5	106-8764	1	Shaft-Coupling

● Not serviced separately



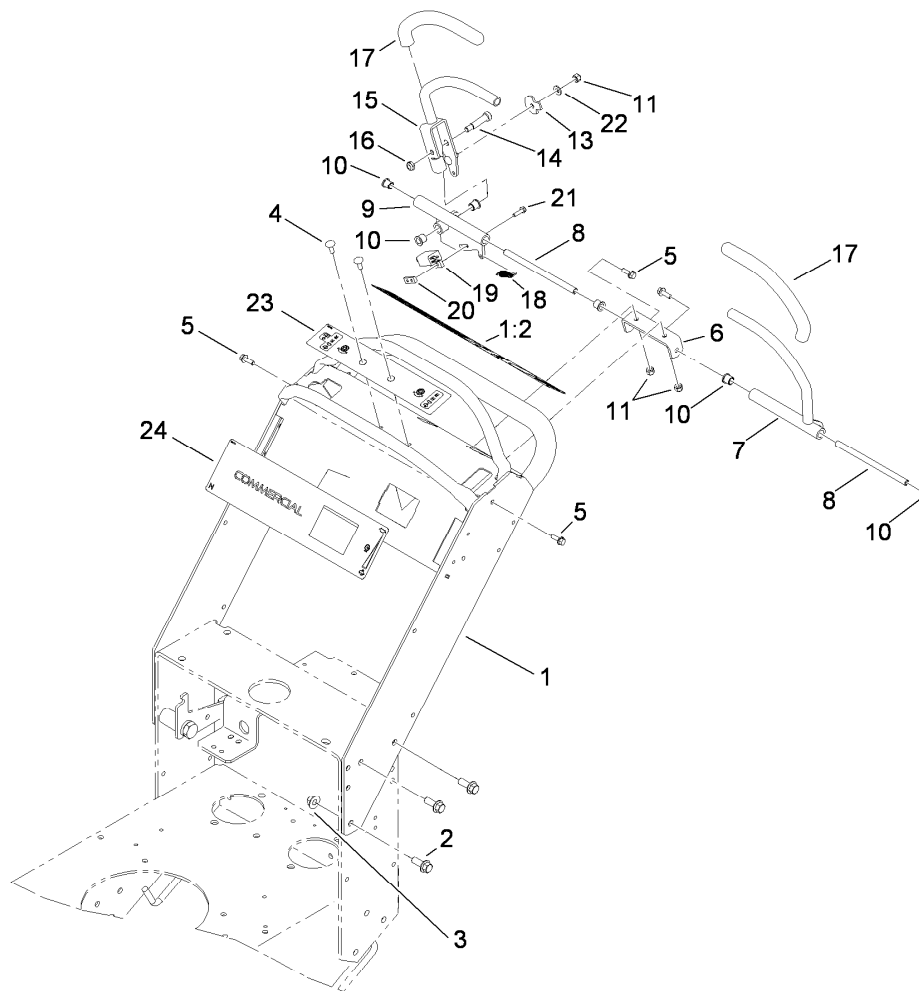
Lower Control Assembly

<i>Ref.</i>	<i>Part Number</i>	<i>Qty.</i>	<i>Description</i>
1	114-0227	2	Bracket-Adapter, Pump
2	322-4	4	Screw-HH
3	3296-29	4	Nut-Lock, NI
4	3296-2	4	Nut-Lock, NI
5	114-0282	2	Screw-HH
6	3217-5	2	Nut-Hex
9	105-0023	2	Switch-Proximity
10	32105-13	4	Screw-HWH



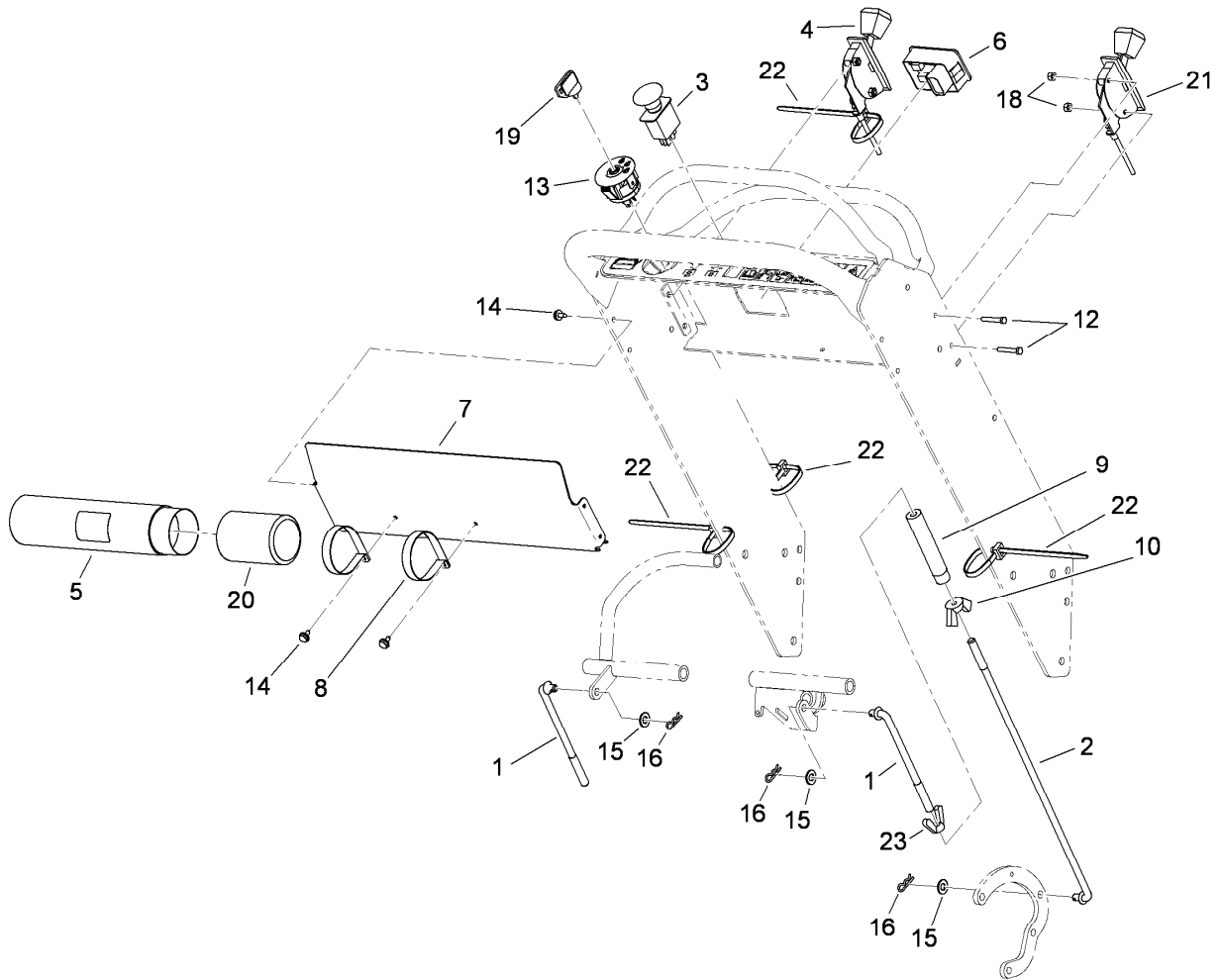
Hydraulic Hose Assembly

<i>Ref.</i>	<i>Part Number</i>	<i>Qty.</i>	<i>Description</i>
1	112-9704	2	HYD Hose ASM
2	114-3430	2	HYD Hose ASM
3	114-3436	1	HYD Hose ASM
4	105-5699	1	HYD Hose ASM
5	114-3434	1	HYD Hose ASM



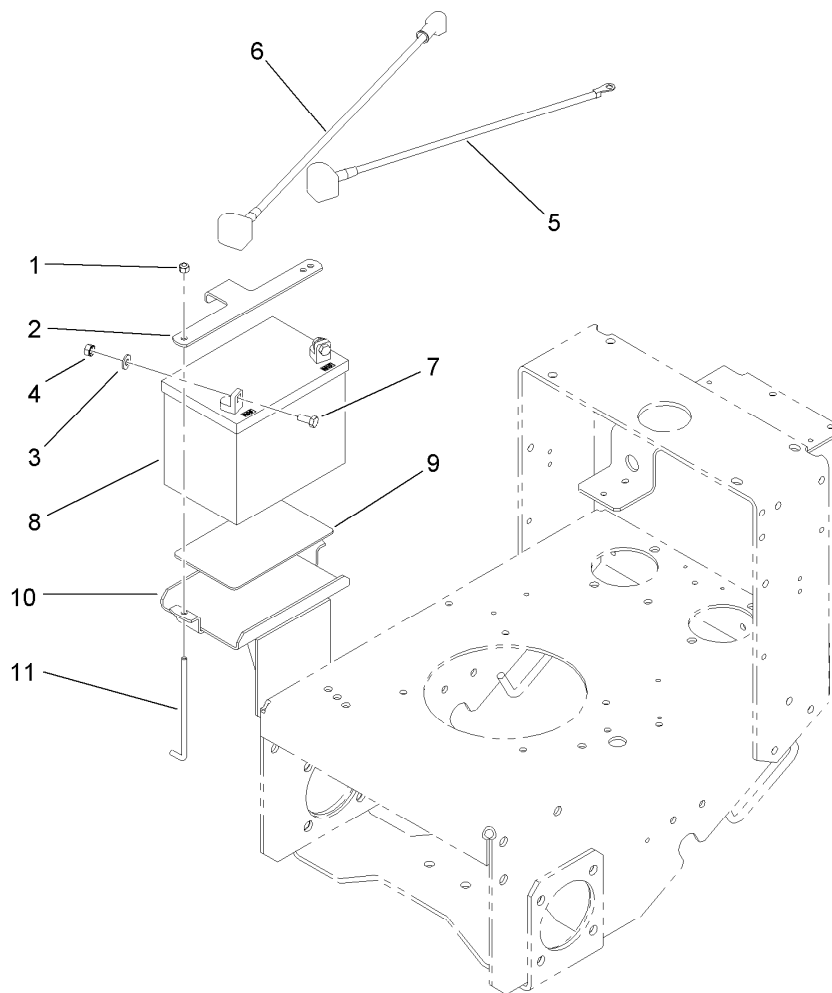
Upper Control Assembly

<i>Ref.</i>	<i>Part Number</i>	<i>Qty.</i>	<i>Description</i>
1	115-4200	1	T-Bar Handle ASM
1:2	115-4179	1	Decal-Warning, Control
2	3234-42	6	Screw-HHF
3	32128-43	6	Nut-Flange
4	3229-1	2	Screw-CARR
5	3234-4	4	Screw-HHF
6	114-0235	1	Bracket-Support
7	114-0272-03	1	Control Lever ASM
8	114-0260	2	Shaft-Pivot
9	114-0234	1	Motion Control ASM
10	103-9928	6	Bearing
11	3296-42	3	Nut-Lock, NI
13	114-0268	1	Cam-Lever
14	114-0239	1	Screw-HSH
15	114-0238-03	1	Lever ASM
16	3296-47	1	Nut-Lock, NI
17	114-0241	2	Grip-Lever
18	114-0249	1	Spring-Extension
19	1-513152	1	Switch-Closed, Normally
20	1-633181	1	Plate-Tapped
21	32105-13	2	Screw-HWH
22	3256-22	1	Washer-Flat
23	114-3424	1	Decal-Control
24	115-4189	1	Decal-Panel, Control



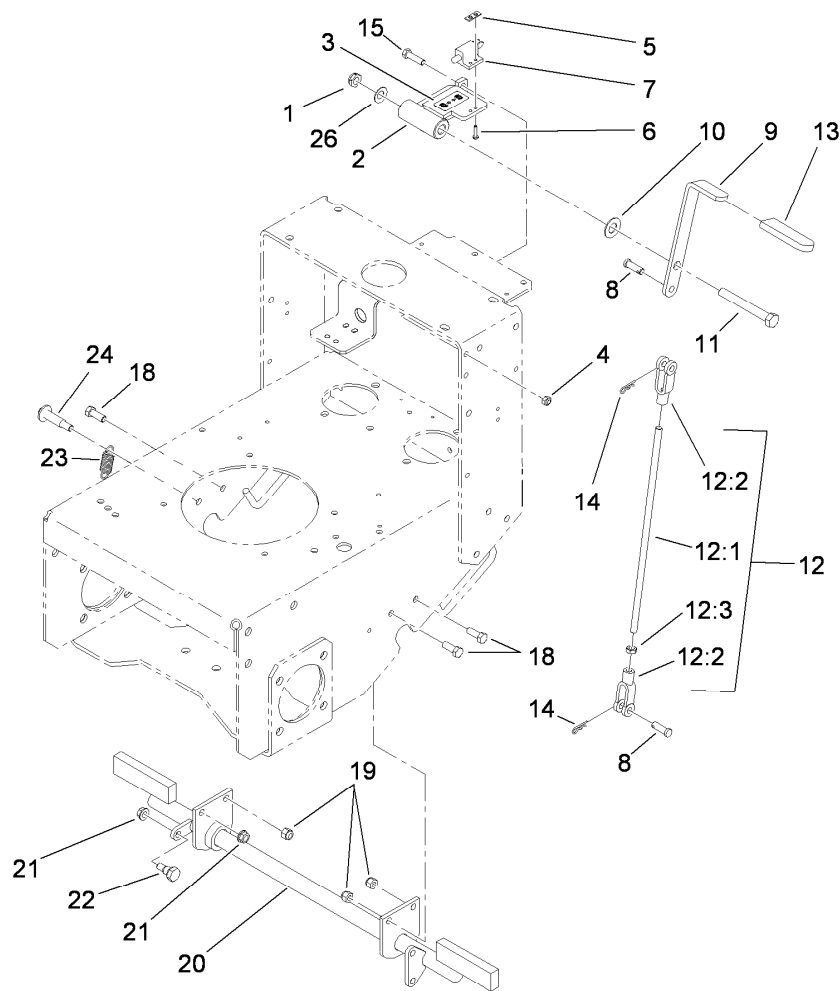
Control Panel Assembly

<i>Ref.</i>	<i>Part Number</i>	<i>Qty.</i>	<i>Description</i>
1	114-0275	2	Rod-Control, Upper
2	114-0276	2	Rod-Control, Lower
3	114-0279	1	Switch-PTO
4	110-4994	1	Cable-Throttle
5	104-7050	1	Tube-Manual
6	115-4180	1	Module-Meter, Hour
7	114-0270-03	1	Cover-Panel, Control
8	2412-120	2	R-Clamp
9	95-1504	2	Turnbuckle
10	32103-3	2	Nut-Wing
12	3290-360	4	Screw-HH
13	116-0050	1	Switch-Ignition
14	32104-76	6	Screw
15	3256-23	4	Washer-Flat
16	3290-307	4	Pin-Hair
18	3296-2	4	Nut-Lock, NI
19	63-8360	1	Key-Ignition
20	104-7048	1	Cap-Housing
21	110-4995	1	Cable-Choke
22	3290-378	4	Tie-Cable
23	114-0281	2	Nut-Wing, LH



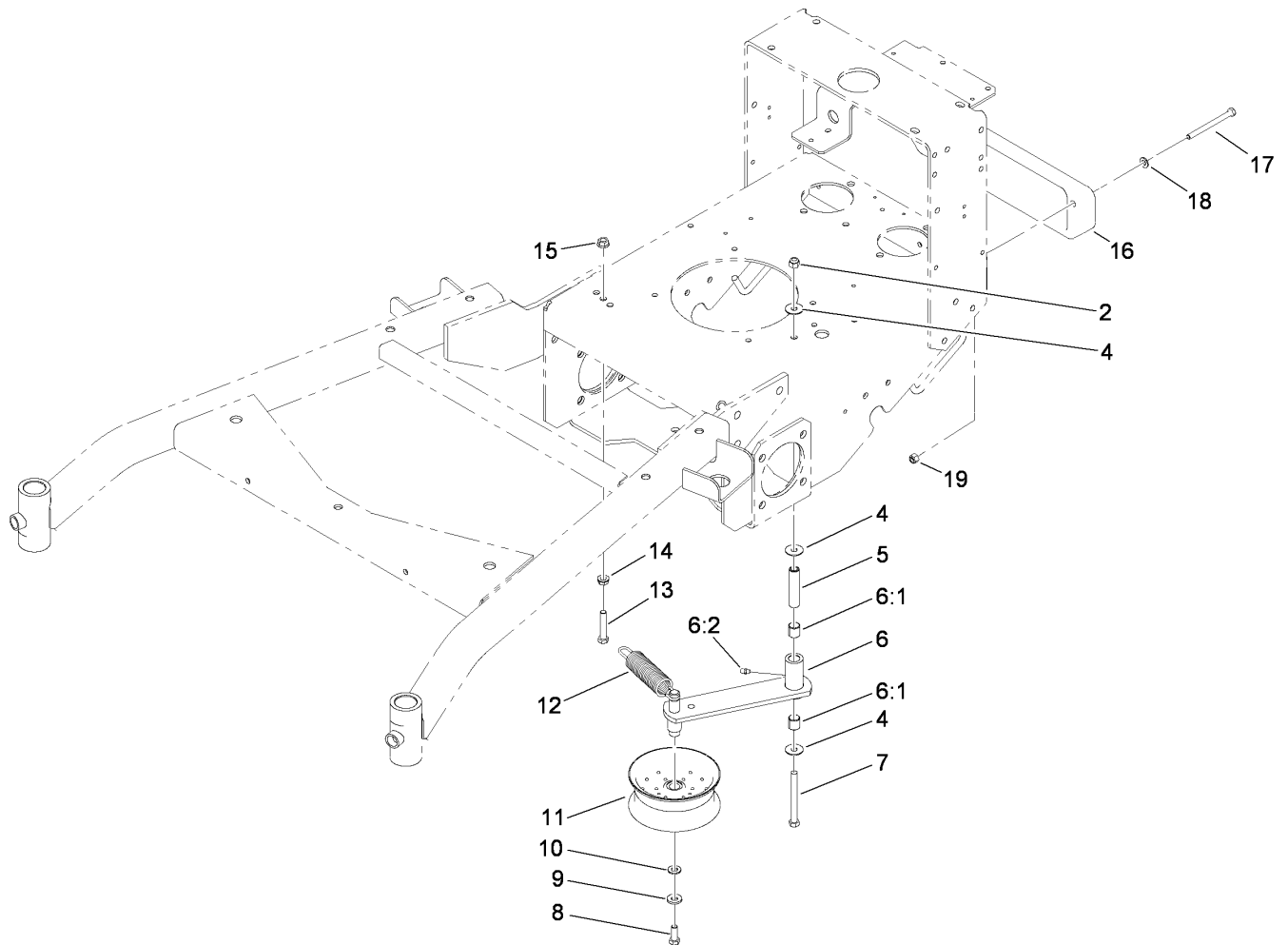
Battery Assembly

<i>Ref.</i>	<i>Part Number</i>	<i>Qty.</i>	<i>Description</i>
1	3296-42	2	Nut-Lock, NI
2	104-8568-03	1	Plate-Hold Down, Battery
3	3256-2	2	Washer-Flat
4	32149-1	2	Nut-Keps
5	112-9709	1	Cable-Battery, Black
6	112-9708	1	Cable-Battery, Red
7	322-3	2	Screw-HH
8	104-8162	1	Battery
9	62-4300	1	Pad-Skid, Anti
10	105-3150-01	1	Battery Tray ASM
11	104-8567	2	Holdown-Battery



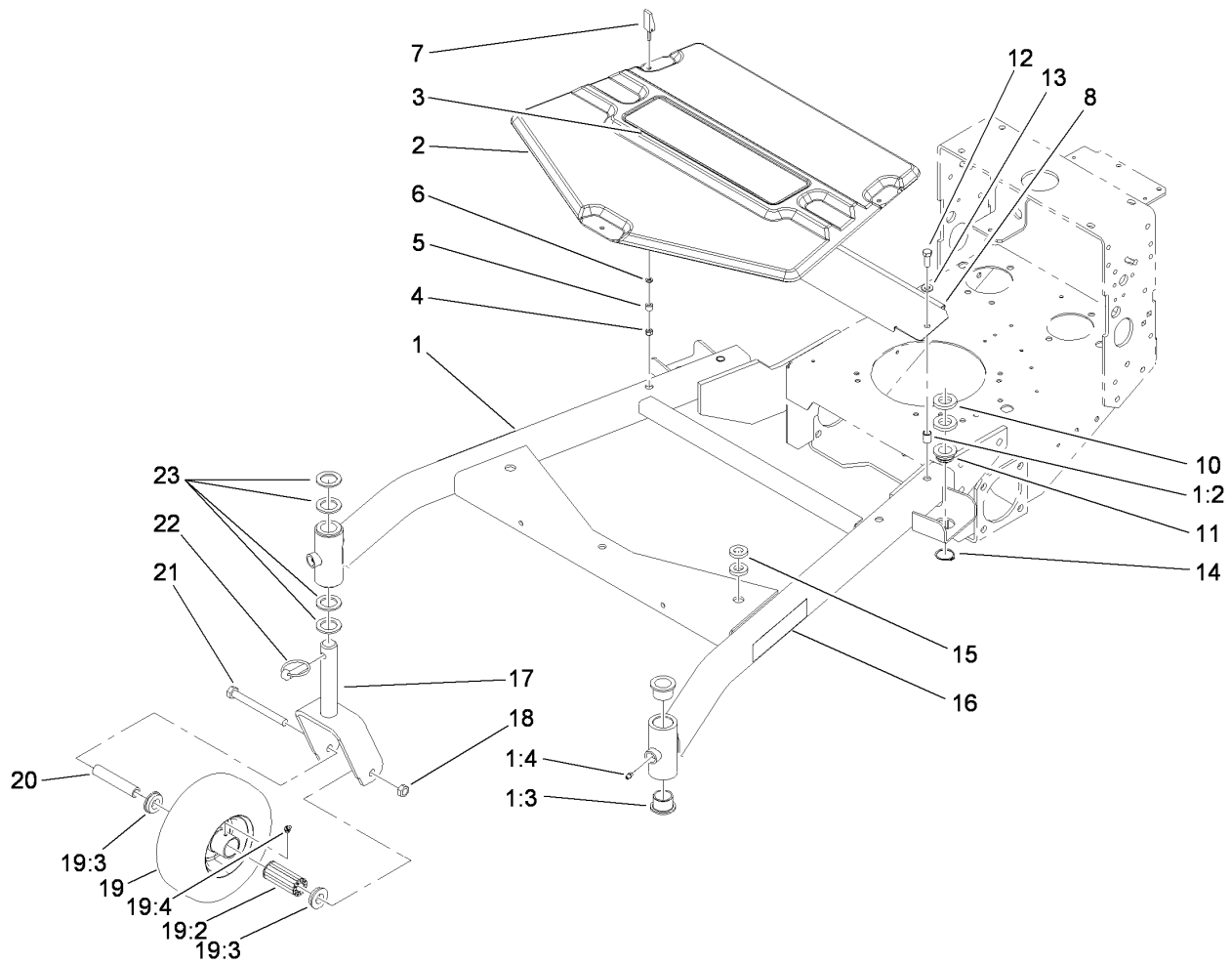
Parking Brake Assembly

<i>Ref.</i>	<i>Part Number</i>	<i>Qty.</i>	<i>Description</i>	<i>Ref.</i>	<i>Part Number</i>	<i>Qty.</i>	<i>Description</i>
1	3296-45	1	Nut-Lock, NI	12:2	1-633131	2	Yoke-Linkage, Brake
2	112-8716-01	1	Support-Handle	12:3	3219-3	1	Nut-Hex
3	112-8720	1	Decal-Brake	13	1-303020	1	Grip-Lever
4	3296-29	2	Nut-Lock, NI	14	3290-307	2	Pin-Hair
5	1-633181	1	Plate-Tapped	15	322-6	2	Screw-HH
6	32105-13	2	Screw-HWH	18	323-6	3	Screw-HH
7	1-513152	1	Switch-Closed, Normally	19	3296-39	3	Nut-Lock, NI
8	1-808285	2	Pin-Clevis	20	110-4976-01	1	Parking Brake ASM
9	106-0671-01	1	Handle-Brake	21	3290-357	2	Nut-HHF, Whiz
10	257-7	1	Bearing-Thrust	22	27-5240	1	Bolt-Shoulder
11	325-17	1	Screw-HH	23	613386	1	Spring-Brake
12	115-1465	1	Brake Rod ASM	24	56-6590	1	Bolt-Wheel
12:1	108-2747	1	Rod-Brake	26	112-9972	1	Washer-Conical, Spring



Power-Take-Off Idler and Weight Assembly

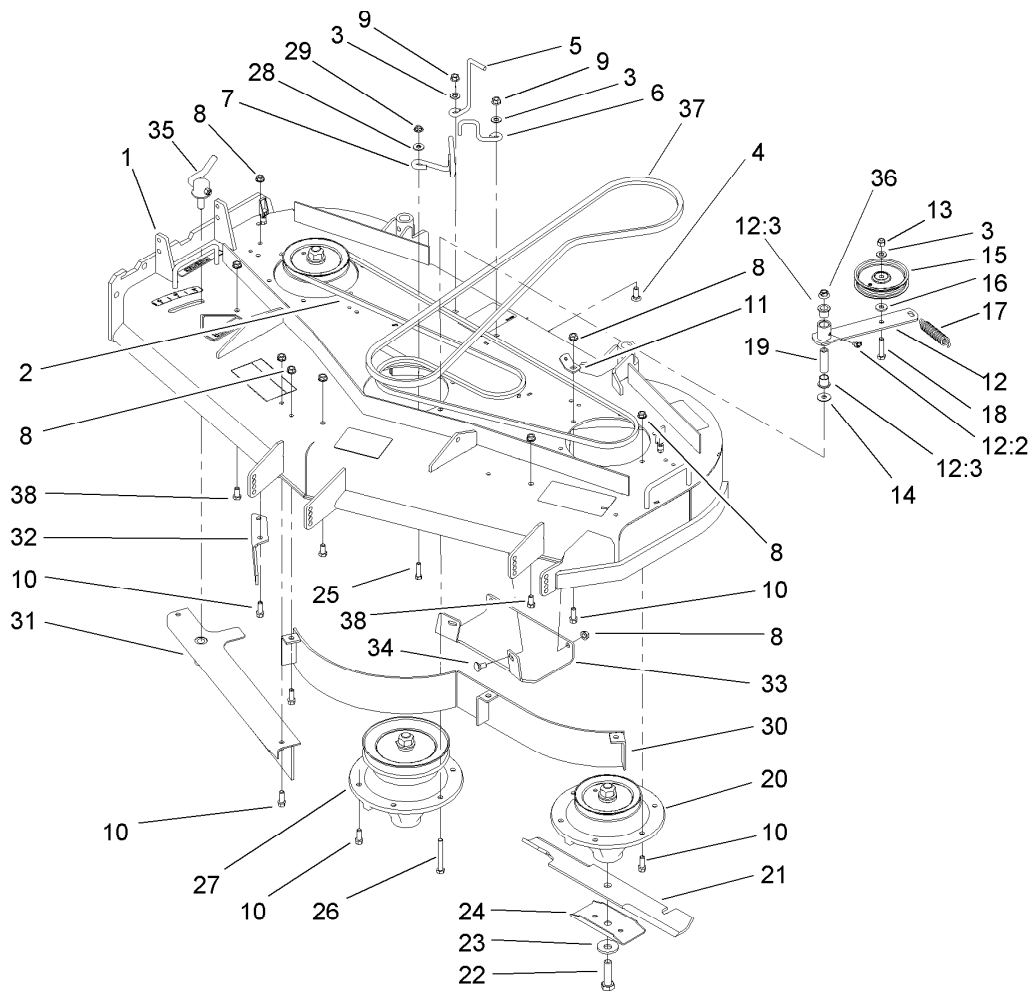
<i>Ref.</i>	<i>Part Number</i>	<i>Qty.</i>	<i>Description</i>
2	3296-39	1	Nut-Lock, NI
4	52-2860	3	Washer
5	104-6377	1	Tube-Idler
6	108-2734	1	Idler Arm ASM
6:1	1-513034	2	Sleeve-Bearing
6:2	302-5	1	Fitting-Grease
7	323-42	1	Screw-HH
8	323-6	1	Screw-HH
9	98-5975	1	Washer-Belleville
10	3256-24	1	Washer-Flat
11	1-413099	1	Pulley-Idler
12	105-8443	1	Spring-Extension
13	323-10	1	Screw-HH
14	3290-357	1	Nut-HHF, Whiz
15	32128-21	1	Nut-HF
16	112-7059-01	1	Weight-Cast
17	322-9	2	Screw-HH
18	3256-23	2	Washer-Flat
19	3296-29	2	Nut-Lock, NI



Carrier Frame Assembly

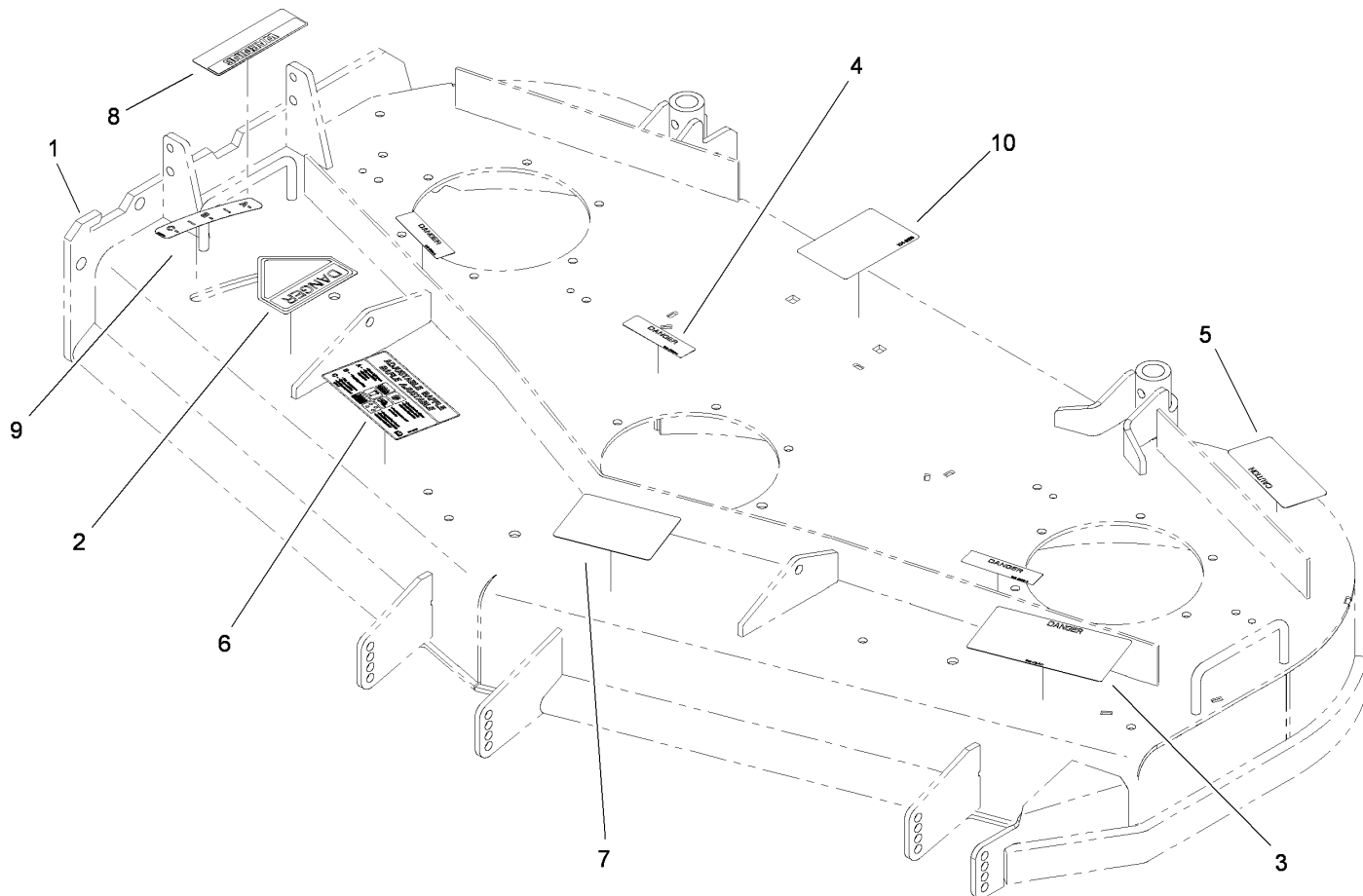
Ref.	Part Number	Qty.	Description
1	108-2665	1	Carrier Frame ASM
1:2	32148-9	2	Insert-Nut
1:3	94-1291	4	Bushing
1:4	302-5	2	Fitting-Grease
2	108-6625	1	Cover-Frame, Carrier
3	112-9713	1	Decal
4	1-804254	3	Nut
5	106-6778	3	Bushing-Latch, Swell
6	99-3058	3	Washer
7	106-6777	3	Handle-Latch, Swell
8	112-7051-01	1	Shield-Belt
10	104-1105	4	Spacer-Support, Deck
11	1-513336	2	Bushing-Deck
12	323-6	2	Screw-HH

Ref.	Part Number	Qty.	Description
13	3256-24	2	Washer-Flat
14	32120-33	2	Ring-Retaining
15	1-323539	4	Spacer
16	106-0635	2	Decal-HOC
17	105-3159-01	2	Castor Fork ASM
18	32153-5	2	Nut-Hex
19	110-5024	2	Wheel And Tire ASM
19:2	112-7066	1	Bearing-Roller
19:3	1-513810	2	Bushing
19:4	302-61	1	Zerk
20	100-6453	2	Bushing-Spanner
21	325-19	2	Screw-HH
22	283-71	2	Pin-Lynch
23	3-6781	8	Washer-Thrust



Deck Drive and Baffle Assembly

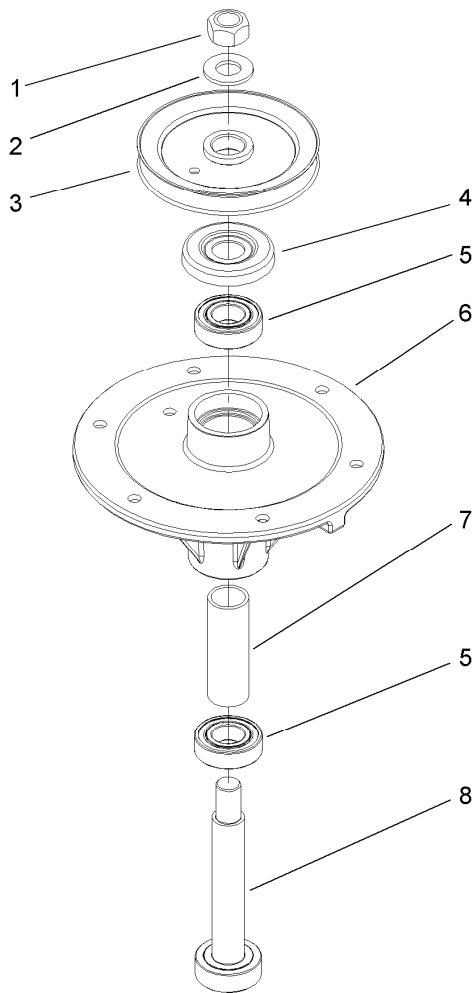
Ref.	Part Number	Qty.	Description	Ref.	Part Number	Qty.	Description
1	112-7083	1	Deck ASM	19	112-7091	1	Spacer
2	108-2694	1	Belt-V	20	110-0728	2	Spindle ASM
3	3256-24	3	Washer-Flat	21	105-7781-03	3	Blade-18 Inch (Hi Flow)
4	3231-22	2	Screw-CARR	22	51-4060	3	Screw-Blade
5	98-5980	1	Guide-Belt	23	103-0865	3	Washer-Blade Bolt, Heavy
6	110-6975	1	Guide-Belt	24	108-2727	3	Stiffener-Blade
7	105-0850	1	Guide-Belt	25	322-6	1	Screw-HH
8	3290-357	29	Nut-HHF, Whiz	26	323-14	1	Screw-HH
9	32128-21	2	Nut-HF	27	110-0730	1	Spindle ASM
10	92-1624	22	Screw-HWH	28	3256-3	1	Washer-Flat
11	104-6374	1	Plate-Spring	29	32128-13	1	Nut-HF
12	108-2728	1	Idler Arm ASM	30	110-0740-03	1	Baffle ASM
12:2	302-11	1	Fitting-Lube, 45 DEG	31	110-0745-03	1	Adjustable Baffle ASM
12:3	256-90	2	Bushing-Flange	32	110-0754-01	1	Baffle-Discharge
13	3296-39	1	Nut-Lock, NI	33	106-7358-01	1	Plate-Skid
14	52-2860	1	Washer	34	3231-1	4	Screw-CARR
15	93-1622	1	Pulley-Idler	35	107-1664	1	Lever ASM
16	9202414	1	Washer-Spacer	36	32128-19	1	Nut-HF
17	51-3650	1	Spring-Extension	37	108-2693	1	Belt-V
18	323-9	1	Screw-HH	38	323-4	3	Screw-HH



Deck Assembly No. 112-7083

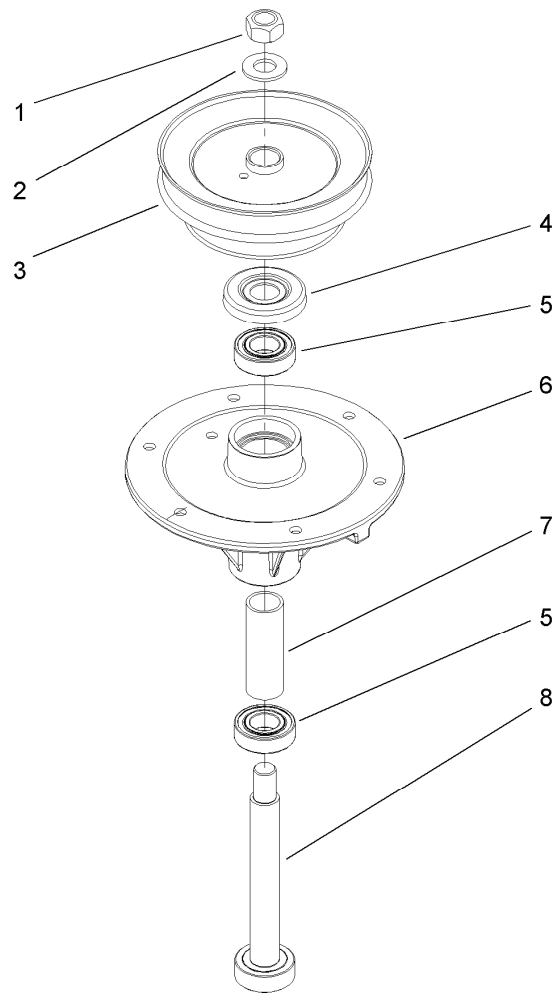
<i>Ref.</i>	<i>Part Number</i>	<i>Qty.</i>	<i>Description</i>
1		1	52 Inch Deck ASM ●
2	43-8480	1	Decal-Danger
3	66-1340	1	Decal-Danger, Thrown Object
4	98-5954	3	Decal-Cover, Missing
5	68-8340	1	Decal-Torque
6	110-2068	1	Decal-Adjustment, Baffle
7	105-7798	1	Decal-Scalp, Anti
8	104-8569	1	Decal-Warning
9	110-2067	1	Decal-Setting, Baffle
10	104-8186	1	Decal-Routing, Belt

● Not serviced separately



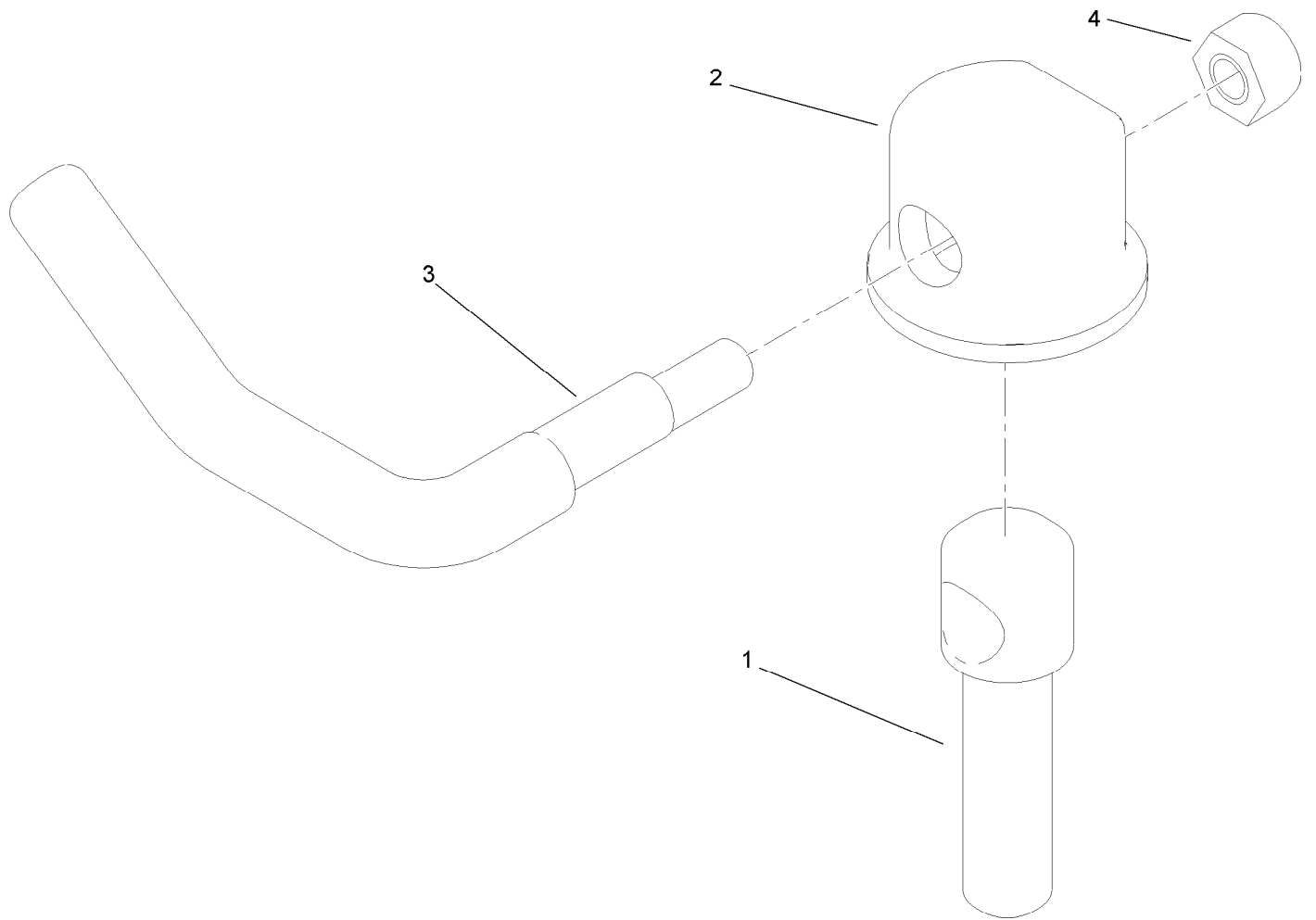
Spindle Assembly No. 110-0728

<i>Ref.</i>	<i>Part Number</i>	<i>Qty.</i>	<i>Description</i>
1	3219-7	1	Nut-Hex
2	7-4150	1	Washer
3	104-1181	1	Pulley ASM
4	106-0873	1	Shield-Bearing
5	104-6325	2	Bearing-Ball
6	108-6696	1	Housing-Spindle
7	110-0727	1	Spacer-Bearing
8	110-0726	1	Shaft-Spindle



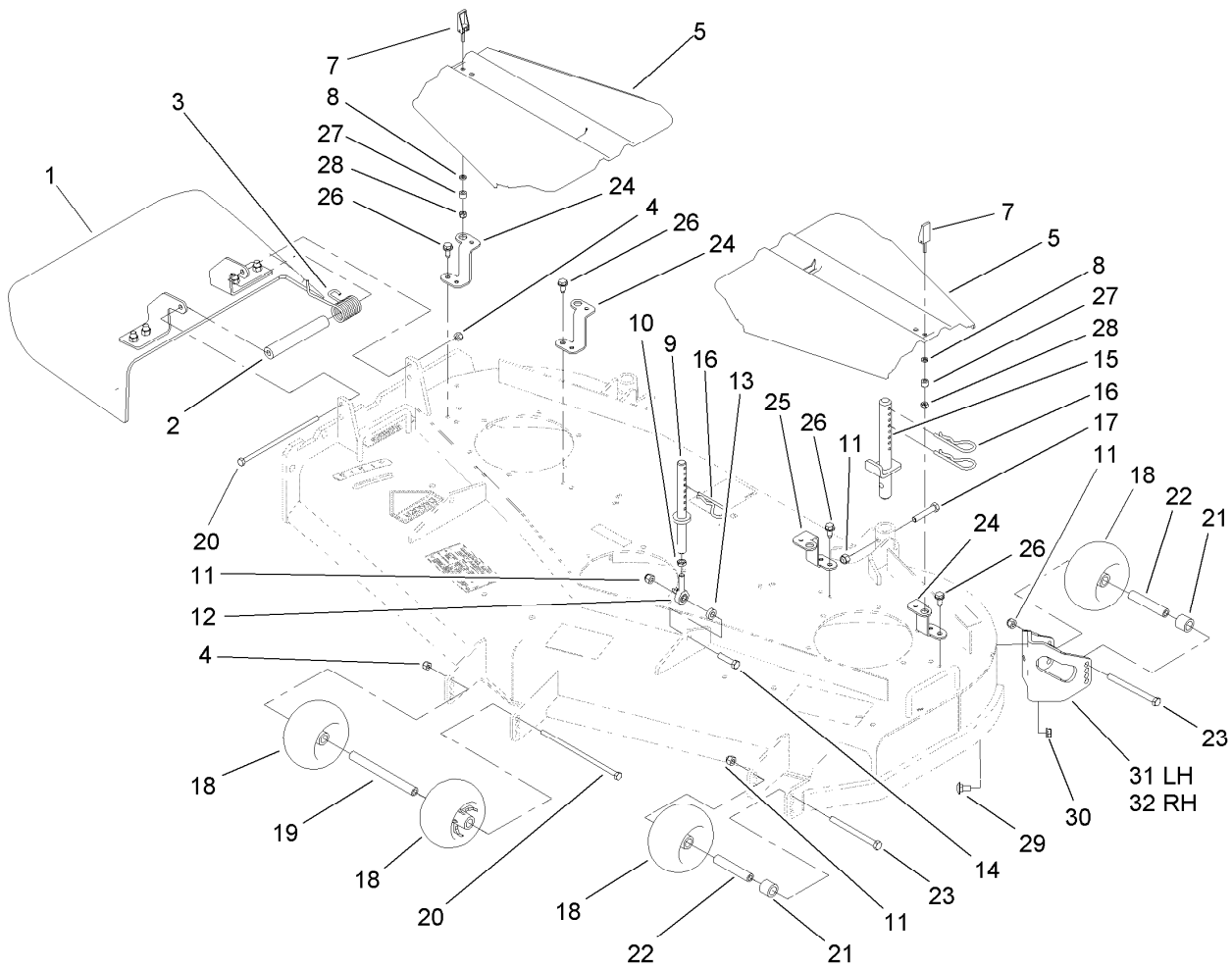
Spindle Assembly No. 110-0730

<i>Ref.</i>	<i>Part Number</i>	<i>Qty.</i>	<i>Description</i>
1	3219-7	1	Nut-Hex
2	7-4150	1	Washer
3	108-6627	1	Pulley And Hub ASM
4	106-0873	1	Shield-Bearing
5	104-6325	2	Bearing-Ball
6	108-6696	1	Housing-Spindle
7	110-0727	1	Spacer-Bearing
8	110-0725	1	Shaft-Spindle



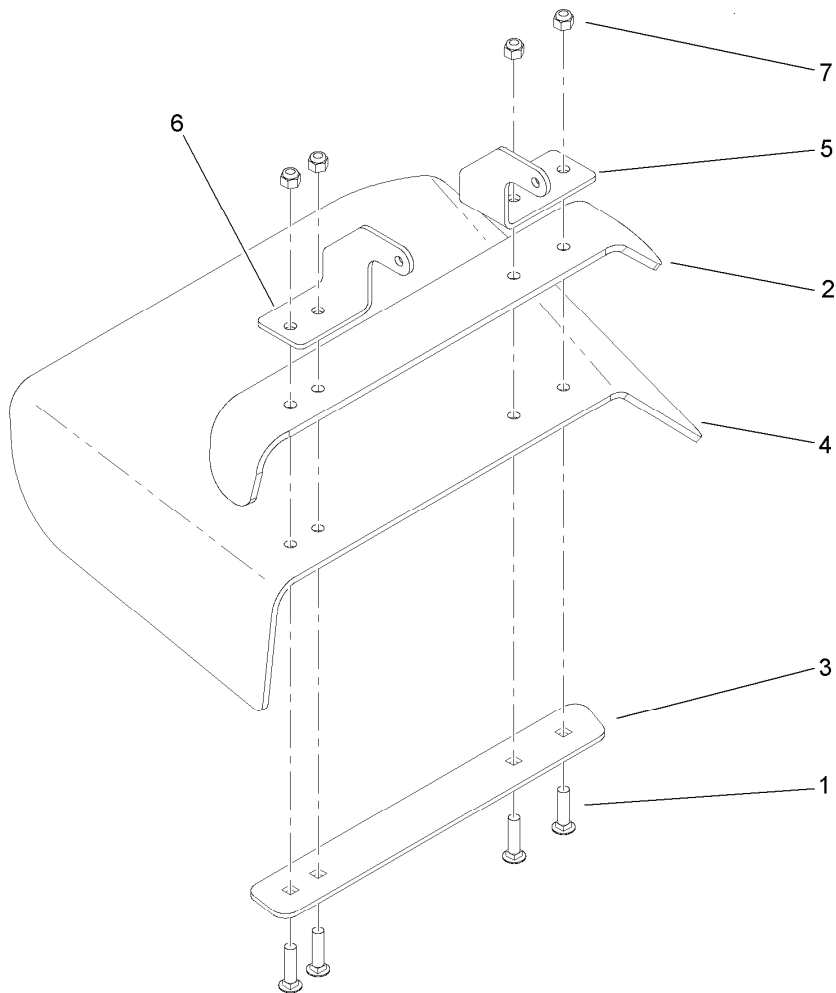
Lever Assembly No. 107-1664

<i>Ref.</i>	<i>Part Number</i>	<i>Qty.</i>	<i>Description</i>
1	106-3239	1	Screw-Lock
2	107-1644	1	Cap-Lock
3	106-3241	1	Lever-Lock
4	3296-29	1	Nut-Lock, NI



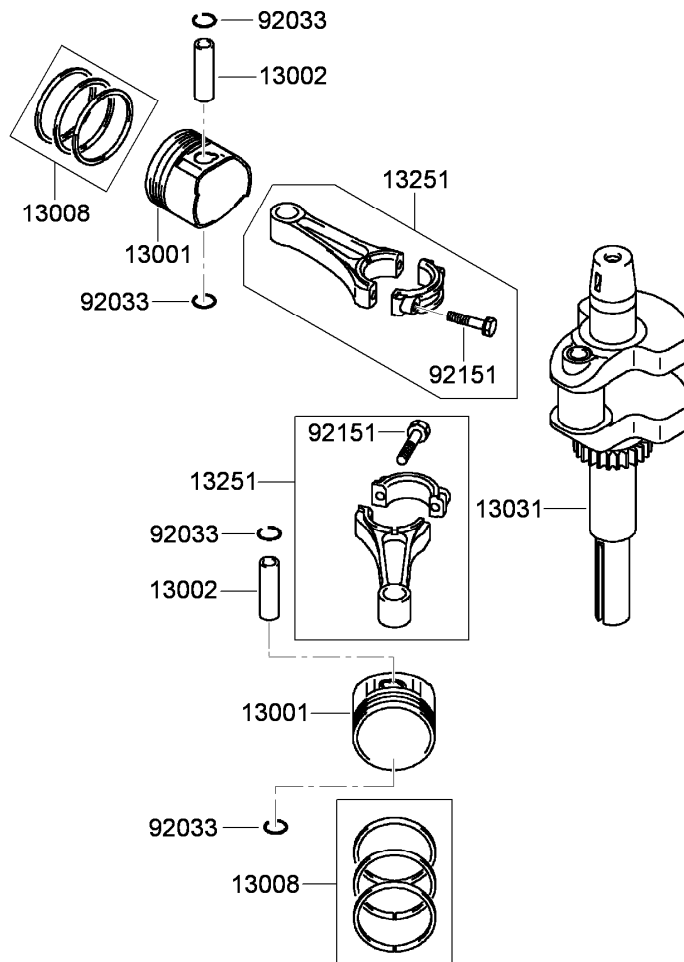
Deck Assembly

<i>Ref.</i>	<i>Part Number</i>	<i>Qty.</i>	<i>Description</i>	<i>Ref.</i>	<i>Part Number</i>	<i>Qty.</i>	<i>Description</i>
1	110-0758	1	Deflector ASM	18	1-603299	5	Roller-Scalp, Anti
2	105-4622	1	Spacer	19	98-5967	1	Spacer-Wheel
3	104-8554	1	Spring-Torsion	20	322-50	2	Screw-HH
4	3296-29	2	Nut-Lock, NI	21	98-7913	3	Tube-Spacer
5	107-8536	2	Cover-Belt	22	98-7912	3	Tube-Spanner
7	106-6777	2	Handle-Latch, Swell	23	323-23	3	Screw-HH
8	99-3058	2	Washer	24	108-2698-01	3	Bracket-Cover
9	108-2674	2	Front Pin ASM	25	108-2699-01	1	Bracket-Cover
10	3220-3	2	Nut-HJ	26	32144-70	4	Screw-HWHTF
11	3296-39	7	Nut-Lock, NI	27	106-6778	2	Bushing-Latch, Swell
12	1-613204	2	Balljoint	28	1-804254	2	Nut
13	104-1156	2	Spacer	29	3231-1	6	Screw-CARR
14	323-8	2	Screw-HH	30	32128-21	6	Nut-HF
15	110-2086	2	Rear Pin ASM	31	110-0736-01	1	Bracket-Roller, LH
16	3290-256	6	Pin-Hair	32	110-0737-01	1	Bracket-Roller, RH
17	323-10	2	Screw-HH				



Deflector Assembly No. 110-0758

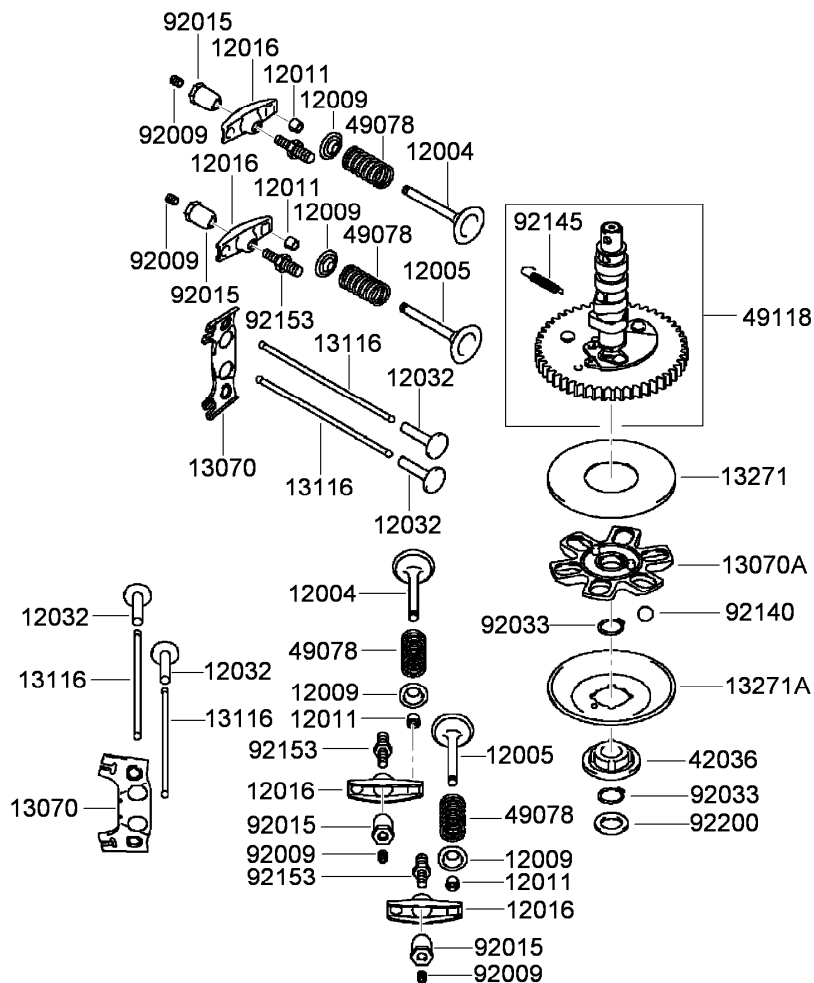
<i>Ref.</i>	<i>Part Number</i>	<i>Qty.</i>	<i>Description</i>
1	3231-4	4	Screw-CARR
2	106-3246-01	1	Deflector
3	106-3248-03	1	Strap-Discharge
4	110-0759	1	Deflector-Rubber
5	107-4197-01	1	Bracket-Hinge, Rear
6	107-4196-01	1	Bracket-Hinge, Front
7	3296-39	4	Nut-Lock, NI



Piston and Crankshaft Assembly Kawasaki FH580V-FS28

<i>Ref.</i>	<i>Part Number</i>	<i>Qty.</i>	<i>Description</i>
13001	13001-7010	2	Piston-Engine ●
13002	13002-7001	2	Pin-Piston ●
13008	13008-6060	2	Piston Ring Set ●
13031	13031-7073	1	Crankshaft ●
13251	13251-7010	2	Connecting Rod ASM ●
92033	92033-7002	4	Ring-Snap ●
92151	92151-7017	4	Bolt (6X35) ●

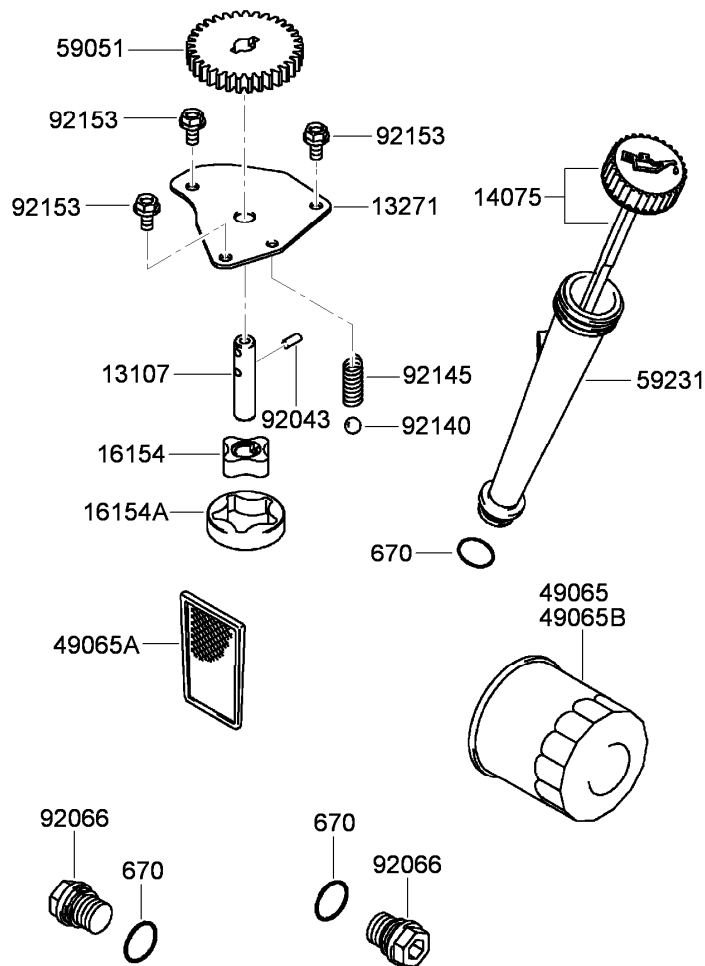
● Obtain parts from www.kawpowerepc.com



Valve and Camshaft Assembly Kawasaki FH580V-FS28

Ref.	Part Number	Qty.	Description
12004	12004-7003	2	Valve-Intake ●
12005	12005-7003	2	Valve-Exhaust ●
12009	12009-7001	4	Retainer-Spring, Valve ●
12011	12011-2056	8	Collet ●
12016	12016-7008	4	Arm-Rocker ●
12032	12032-7001	4	Tappet ●
13070	13070-7001	2	Guide ●
13070A	13070-7004	1	Guide ●
13116	13116-2057	4	Rod-Push ●
13271	13271-7007	1	Plate ●
13271A	13271-7021	1	Plate-Governor ●
42036	42036-7010	1	Sleeve ●
49078	49078-7001	4	Spring-Valve, Engine ●
49118	49118-7004	1	Camshaft ●
92009	92009-2341	4	Screw ●
92015	92015-2253	4	Nut ●
92033	92033-7001	2	Ring-Snap ●
92140	92140-7005	6	Ball ●
92145	92145-7001	1	Spring ●
92153	92153-7019	4	Bolt ●
92200	92200-7001	1	Washer ●

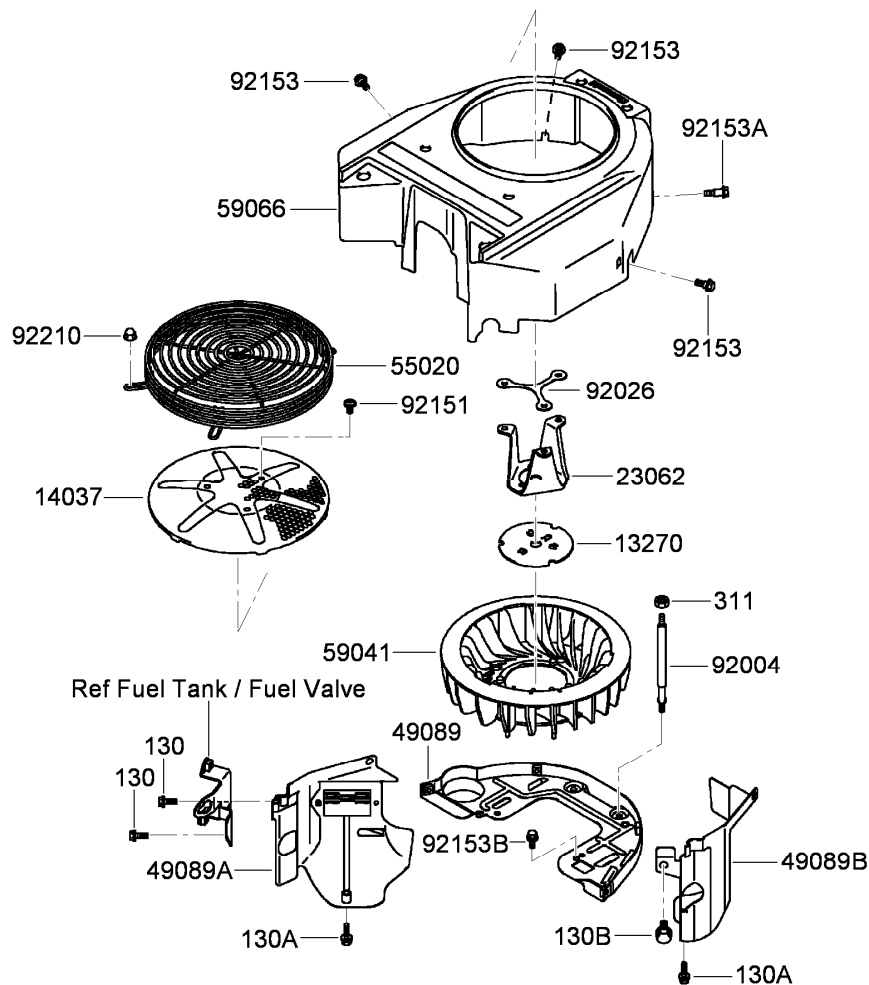
● Obtain parts from www.kawpowerepc.com



Lubrication Equipment Assembly Kawasaki FH580V-FS28

Ref.	Part Number	Qty.	Description
670	670D2016	3	O-Ring (16Mm) ●
13107	13107-7009	1	Shaft ●
13271	13271-7017	1	Plate ●
14075	14075-7009	1	Cap ASM ●
16154	16154-2053	1	Rotor-Pump (In) ●
16154A	16154-2054	1	Rotor-Pump (Out) ●
49065	49065-2078	1	Filter-Oil (Part Can Be Used As Substitute On Product And Is Supplied Until Stock Exhausted) ●
49065A	49065-7004	1	Filter-Oil ●
49065B	49065-7010	1	Filter-Oil ●
59051	59051-7011	1	Gear-Spur ●
59231	59231-7005	1	Filler ●
92043	92043-7003	2	Pin ●
92066	92066-7003	2	Plug ●
92140	92140-7003	1	Ball ●
92145	92145-7002	1	Spring ●
92153	92153-7043	3	Bolt (6X12) ●

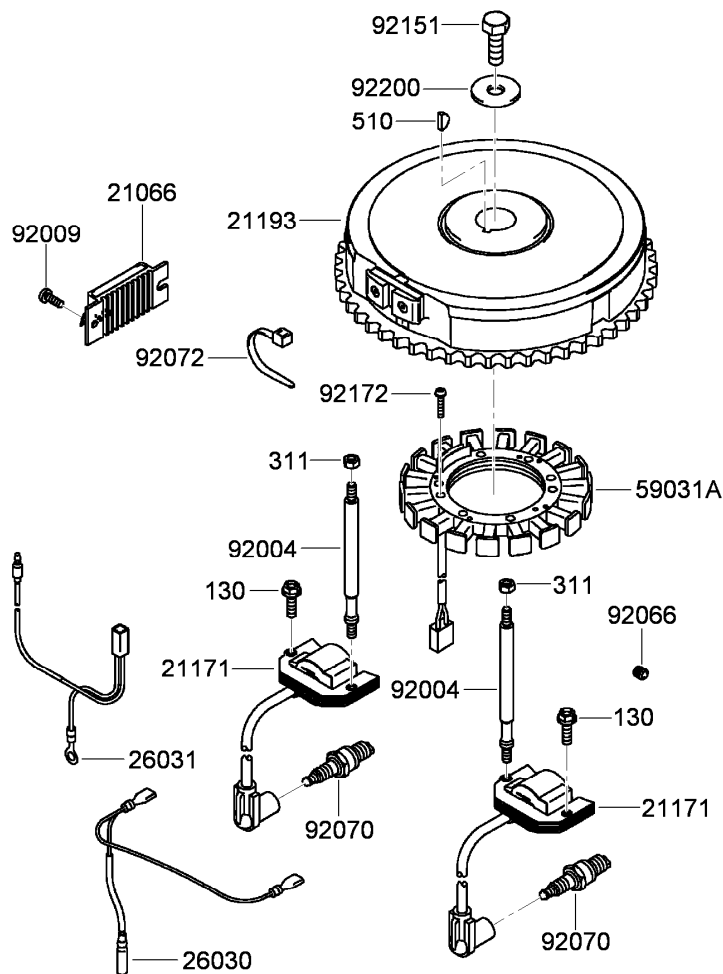
● Obtain parts from www.kawpowerepc.com



Cooling Equipment Assembly Kawasaki FH580V-FS28

Ref.	Part Number	Qty.	Description
130	130AA0616	2	Bolt-Flanged (6X16) ●
130A	130AA0625	2	Bolt-Flanged (6X25) ●
130B	130AA0816	1	Bolt-Flanged (8X16) ●
311	311AA0600	2	Nut-Hex (6Mm) ●
13270	13270-7007	1	Plate ●
14037	14037-7020-9H	1	Screen ●
23062	23062-7010	1	Bracket ●
49089	49089-7032	1	Shroud-Engine ●
49089A	49089-7042	1	Shroud-Engine ●
49089B	49089-7043	1	Shroud-Engine ●
55020	55020-7004	1	Guard ●
59041	59041-7012	1	Fan ●
59066	59066-7037	1	Housing-Fan ●
92004	92004-7006	2	Stud ●
92026	92026-7007	1	Spacer ●
92151	92151-7012	3	Bolt (6X12) ●
92153	92153-7007	3	Bolt ●
92153A	92153-7008	1	Bolt ●
92153B	92153-7043	2	Bolt (6X12) ●
92210	92210-0003	4	Nut ●

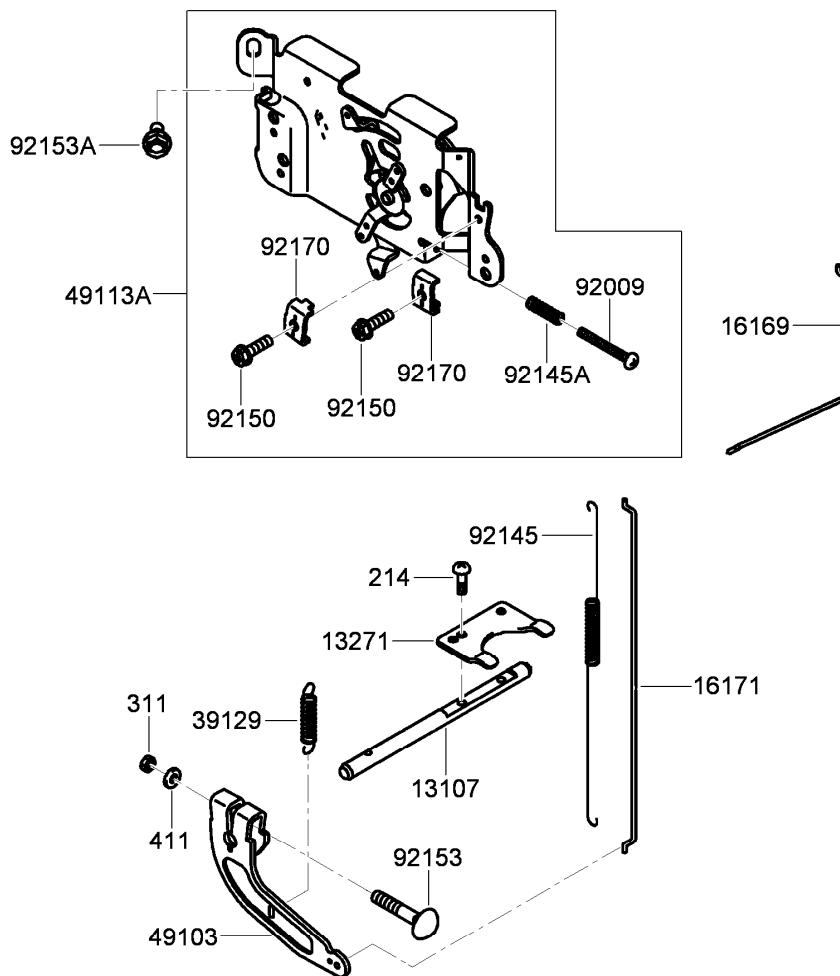
● Obtain parts from www.kawpowerepc.com



Electric Equipment Assembly Kawasaki FH580V-FS28

Ref.	Part Number	Qty.	Description
130	130AA0620	2	Bolt-Flanged (6X20) ●
311	311AA0600	2	Nut-Hex (6Mm) ●
510	510A5100	1	Key-Woodruff ●
21066	21066-7011	1	Regulator-Voltage ●
21171	21171-7034	2	Ignition Coil ASM ●
21193	21193-7032	1	Flywheel ASM ●
26030	26030-7001	1	Harness ●
26031	26031-7012	1	Harness ●
59031A	59031-7014	1	Coil-Charging ●
92004	92004-7009	2	Stud ●
92009	92009-2308	1	Screw ●
92066	92066-7026	1	Plug ●
92070	92070-7003	2	Spark Plug (R C J 8 Y, Solid) ●
92072	92072-7003	3	Band ●
92151	92151-2097	1	Bolt (12X30) ●
92172	92172-7018	4	Screw (5X20) ●
92200	92200-7002	1	Washer ●

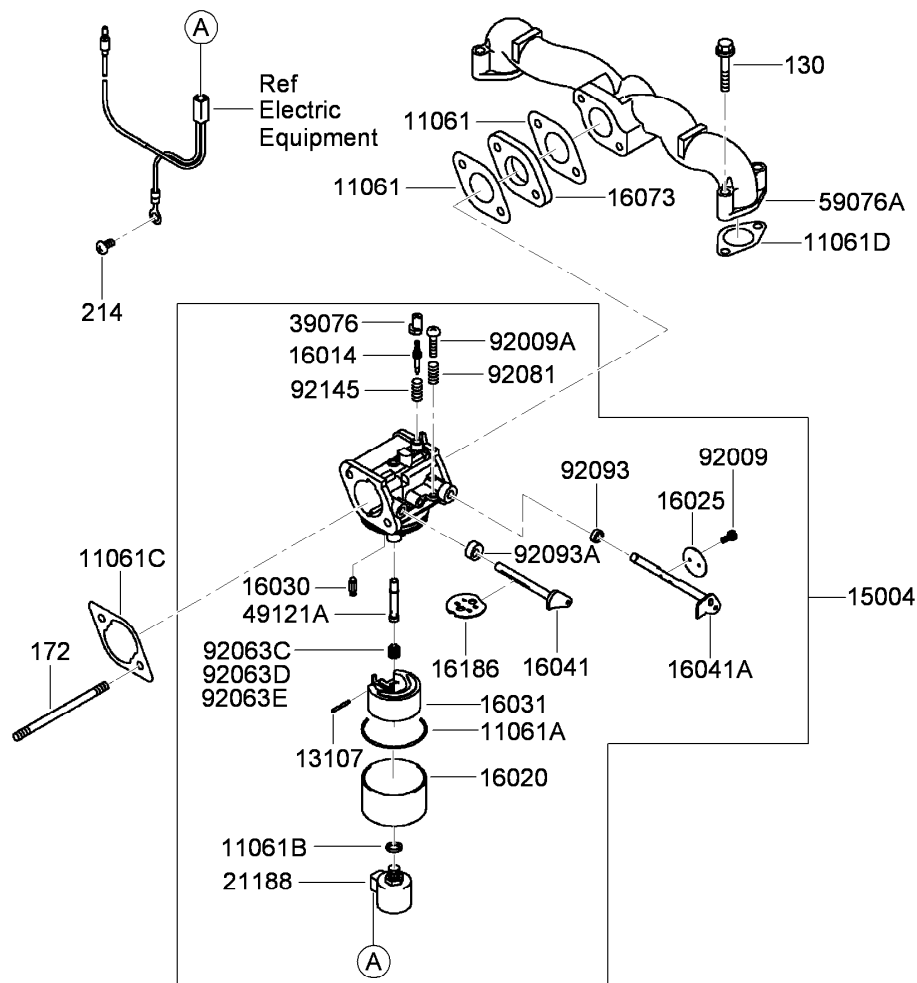
● Obtain parts from www.kawpowerepc.com



Control Equipment Assembly Kawasaki FH580V-FS28

Ref.	Part Number	Qty.	Description
214	214AA0408	2	Screw-Pan +-(4X8) ●
311	311AA0600	1	Nut-Hex (6Mm) ●
411	411AA0600	1	Washer-Plain (6Mm) ●
13107	13107-7010	1	Shaft ●
13271	13271-7032	1	Plate ●
16169	16169-7010	1	Link-Choke ●
16171	16171-7001	1	Link ●
39129	39129-7003	1	Spring-Governor ●
49103	49103-7004	1	Arm-Governor ●
49113A	49113-7054	1	Control Panel ASM ●
92009	92009-7007	1	Screw (4X35) ●
92145	92145-7003	1	Spring ●
92145A	92145-7005	1	Spring ●
92150	92150-2182	2	Bolt (5X18) ●
92153	92153-7033	1	Bolt (6X35) ●
92153A	92153-7043	2	Bolt (6X12) ●
92170	92170-7001	2	Clamp ●

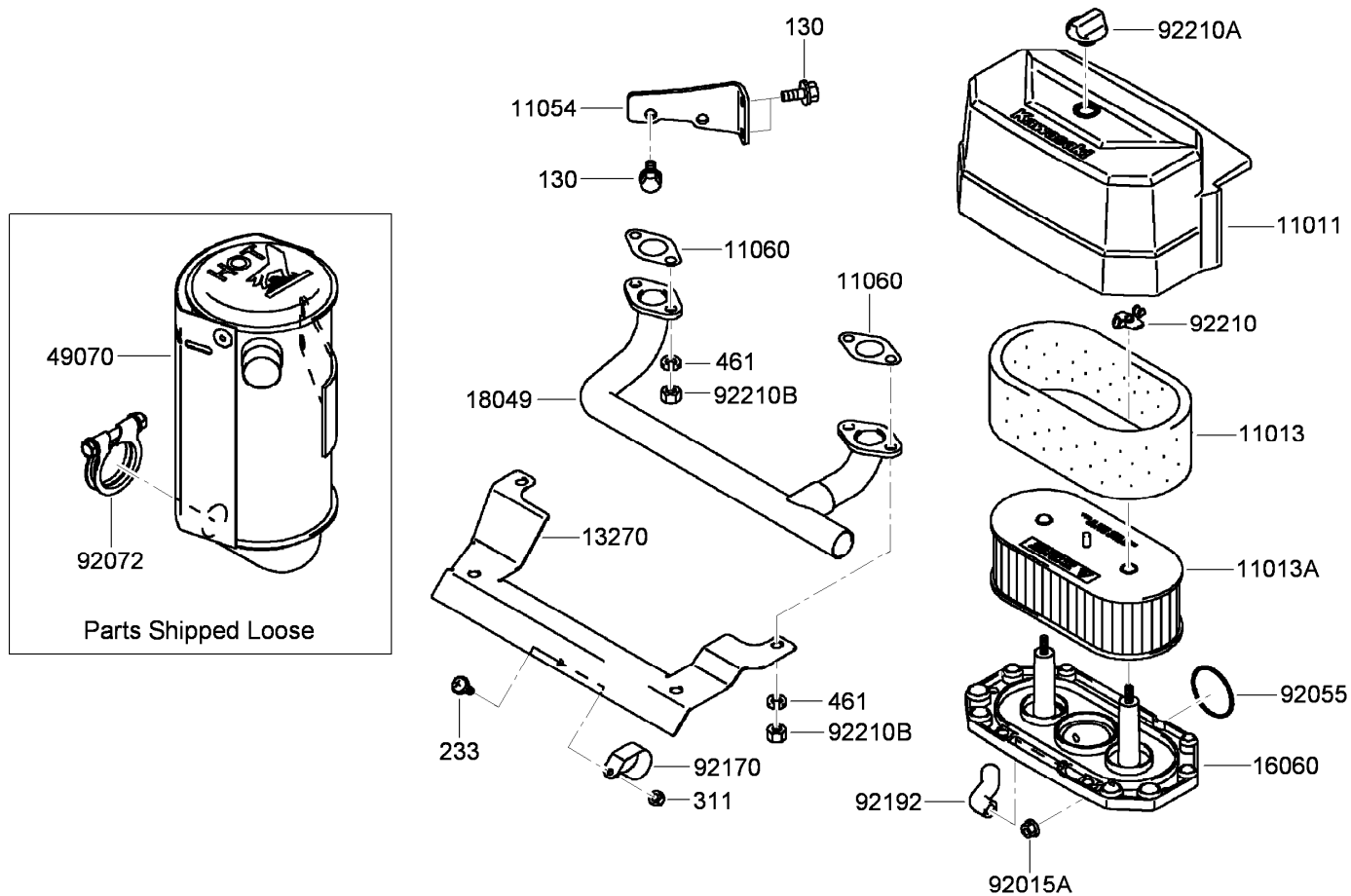
● Obtain parts from www.kawpowerepc.com



Carburetor Assembly Kawasaki FH580V-FS28

Ref.	Part Number	Qty.	Description	Ref.	Part Number	Qty.	Description
130	130AA0635	4	Bolt-Flanged (6X35) ●	16041A	16041-7018	1	Shaft-Throttle, Carburetor ●
172	172BA0690	2	Bolt-Stud (6X90) ●	16073	16073-7007	1	Insulator ●
214	214AA0510	1	Screw-Pan +-(5X10) ●	16186	16186-7001	1	Choke Valve ASM ●
11061	11061-7004	2	Gasket-Insulator ●	21188	21188-7002	1	Solenoid ●
11061A	11061-7009	1	Gasket-Chamber ●	39076	39076-7001	1	Limiter ●
11061B	11061-7010	1	Gasket-Screw ●	49121A	49121-7016	1	Nozzle-Main ●
11061C	11061-7018	1	Gasket-Cleaner, Air ●	59076A	59076-7017	1	Manifold-Intake ●
11061D	11061-7019	2	Gasket ●	92009	92009-2083	2	Screw ●
13107	13107-7018	1	Shaft ●	92009A	92009-2349	1	Screw ●
15004	15004-7060	1	Carburetor ASM ●	92063C	92063-7066	1	Jet-Main, No. 108 ●
16014	16014-7005	1	Screw-Air, Pilot ●	92063D	92063-7090	1	Jet-Main, No.106 (2380Ft) ●
16020	16020-7003	1	Chamber-Float ●	92063E	92063-7091	1	Jet-Main, No.104 (6560Ft) ●
16025	16025-7006	1	Valve-Throttle ●	92081	92081-2234	1	Spring ●
16030	16030-7003	1	Valve-Float ●	92093	92093-2100	1	Seal ●
16031	16031-7002	1	Float ●	92093A	92093-7003	1	Seal ●
16041	16041-7016	1	Shaft-Choke, Carburetor ●	92145	92145-7015	1	Spring ●

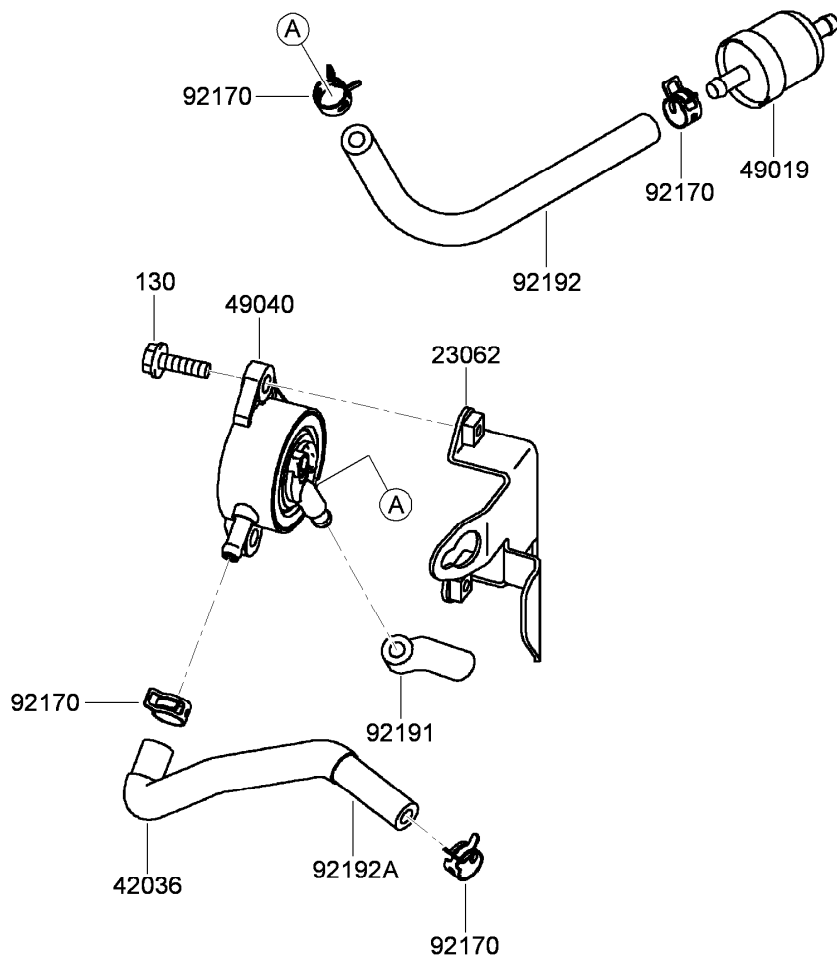
● Obtain parts from www.kawpowerepc.com



Air Filter and Muffler Assembly Kawasaki FH580V-FS28

Ref.	Part Number	Qty.	Description
130	130AA0816	3	Bolt-Flanged (8X16) ●
233	233AA0416	1	Screw-Pan, Wp +-(4X16) ●
311	311AA0400	1	Nut-Hex (4Mm) ●
461	461DA0800	4	Washer-Spring (8Mm) ●
11011	11011-7046	1	Case-Filter, Air ●
11013	11013-7025	1	Element-Filter, Air ●
11013A	11013-7031	1	Element-Filter, Air ●
11054	11054-7002-9H	1	Bracket ●
11060	11060-7021	2	Gasket-Muffler ●
13270	13270-7008	1	Plate ●
16060	16060-7016	1	Pipe-Intake ●
18049	18049-7001	1	Pipe-Exhaust ●
49070	49070-7021	1	Muffler ●
92015A	92015-1367	2	Nut ●
92055	92055-7015	1	O-Ring ●
92072	92072-7012	1	Band ●
92170	92170-7002	1	Clamp ●
92192	92192-7010	1	Tube ●
92210	92210-7004	2	Nut (M6) ●
92210A	92210-7019	1	Nut ●
92210B	92210-7027	4	Nut (M8) ●

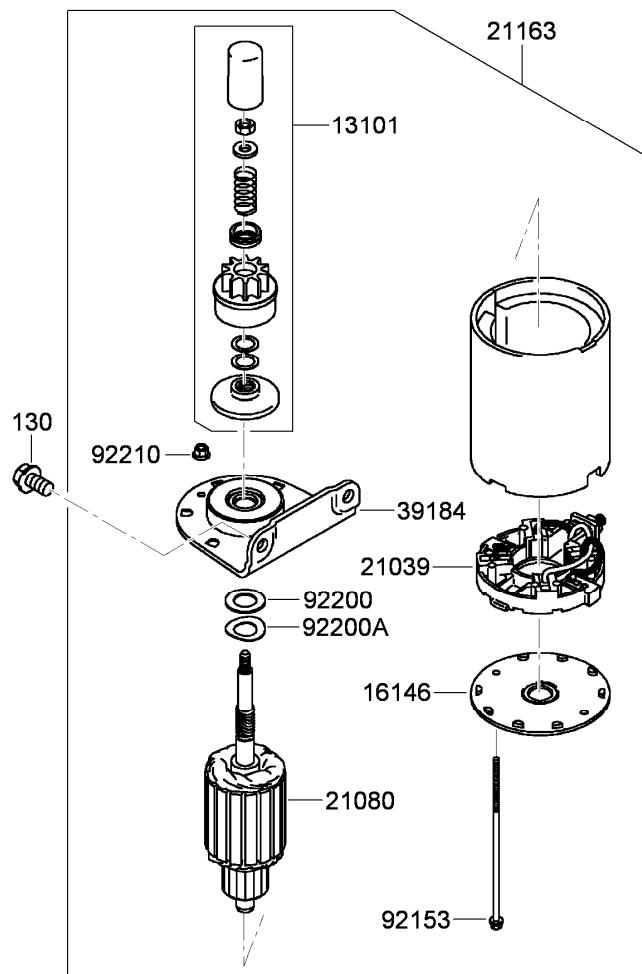
● Obtain parts from www.kawpowerepc.com



Fuel Tank and Valve Assembly Kawasaki FH580V-FS28

<i>Ref.</i>	<i>Part Number</i>	<i>Qty.</i>	<i>Description</i>
130	130AA0620	2	Bolt-Flanged (6X20) ●
23062	23062-7019-9H	1	Bracket ●
42036	42036-7012	1	Sleeve ●
49019	49019-7001	1	Filter-Fuel ●
49040	49040-7001	1	Pump-Fuel ●
92170	92170-2009	4	Clamp ●
92191	92191-7002	1	Tube ●
92192	92192-7135	1	Tube (6.35X12.7X160) ●
92192A	92192-7136	1	Tube (6.35X12.7X180) ●

● Obtain parts from www.kawpowerepc.com



Starter Assembly Kawasaki FH580V-FS28

<i>Ref.</i>	<i>Part Number</i>	<i>Qty.</i>	<i>Description</i>
130	130AA0814	2	Bolt-Flanged (8X14) ●
13101	13101-7010	1	Gear ASM ●
16146	16146-7013	1	Cover ASM ●
21039	21039-7002	1	Brush ●
21080	21080-7007	1	Armature ●
21163	21163-7031	1	Starter-Electric ●
39184	39184-7009	1	Bracket ASM ●
92153	92153-7034	2	Bolt ●
92200	92200-7023	1	Washer ●
92200A	92200-7024	1	Washer ●
92210	92210-7037	2	Nut ●

● Obtain parts from www.kawpowerepc.com

56033



56070



56080



Label Assembly Kawasaki FH580V-FS28

<i>Ref.</i>	<i>Part Number</i>	<i>Qty.</i>	<i>Description</i>
56033	56033-7001	1	Label-Manual ●
56070	56070-7001	1	Label-Warning ●
56080	56080-7055	1	Label-Brand ●

● Obtain parts from www.kawpowerepc.com

Attachments and Accessories

For 30499 Commercial Walk-Behind Mower, Floating Deck, Split Lever, Hydro Drive with 52in TURBO FORCE Cutting Unit

Product Name	Model/Part
Blade-Recycler, 18 inch	105-7779-03
Blade-Med Flow, 18 inch.....	105-7794-03
Blade-Low Flow, 18 inch	105-7795-03
Blade-Atomic, 18 inch	105-7796-03
Turbo Baffle Kit	107-1634
Blade-Hi Flow, 18 inch (6 Pack)	108-1117
Blade-Atomic, 18 inch (6 Pack).....	108-1118
Blade-Lo Flow, 18 inch (6 Pack)	110-0406
Blade-Recycler, 18 inch (6 Pack).....	110-0408
Blade-Med Flow, 18 inch (6 Pack)	110-0409
52 inch Recycler Kit	110-2040
Weight-Cast.....	112-7059-01
Weight Kit	112-9971
Operator Controlled Discharge Chute Kit.....	115-4195
Soft Bag (3 Bushel).....	30104
Tru Trak Sulky.....	30110

Notes:

Notes:



Count on it.