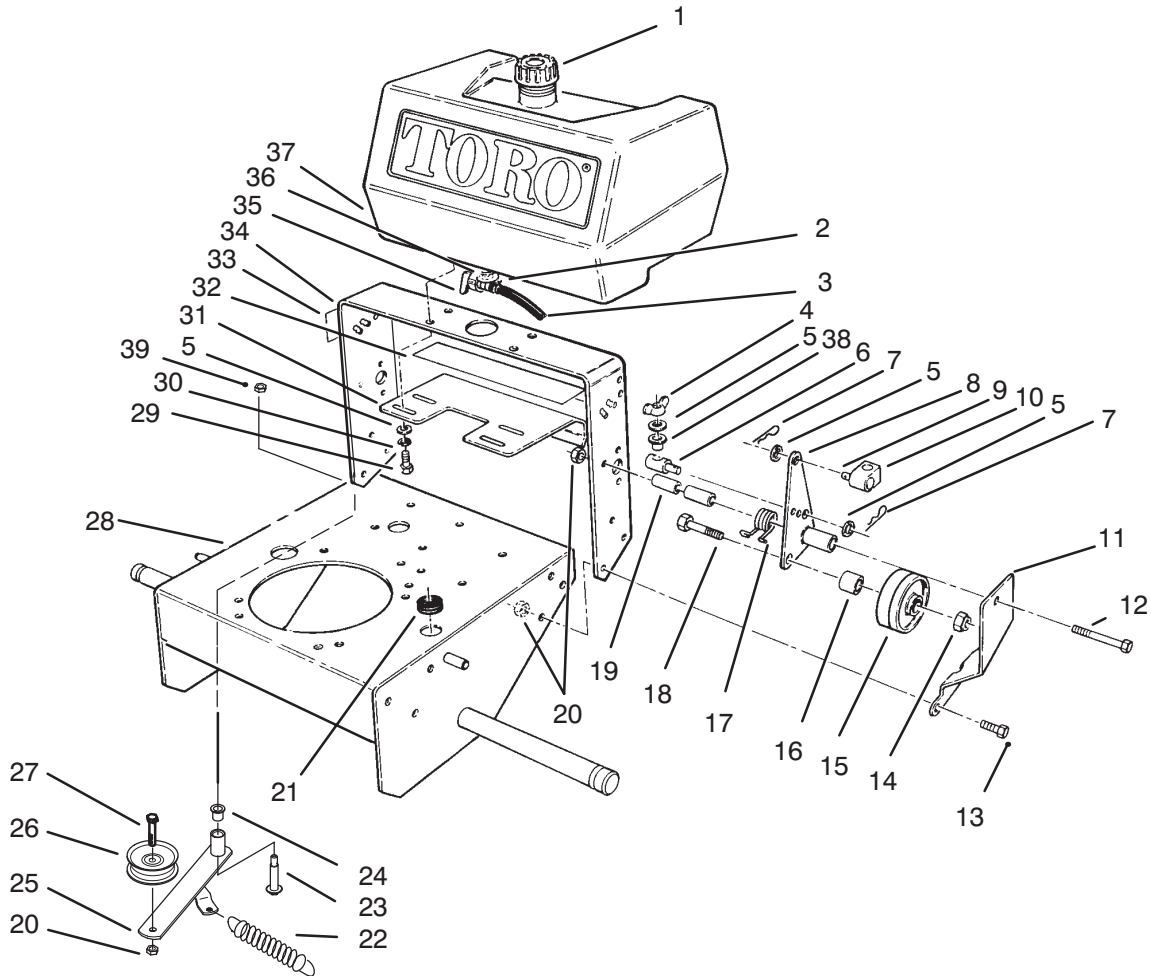




MODEL NO. 30166-590001 & UP

PARTS
CATALOG

ProLine® MIDSIZE TRACTION UNIT
12.5 HP Kawasaki Gear Drive



C-2098

FRAME ASSEMBLY

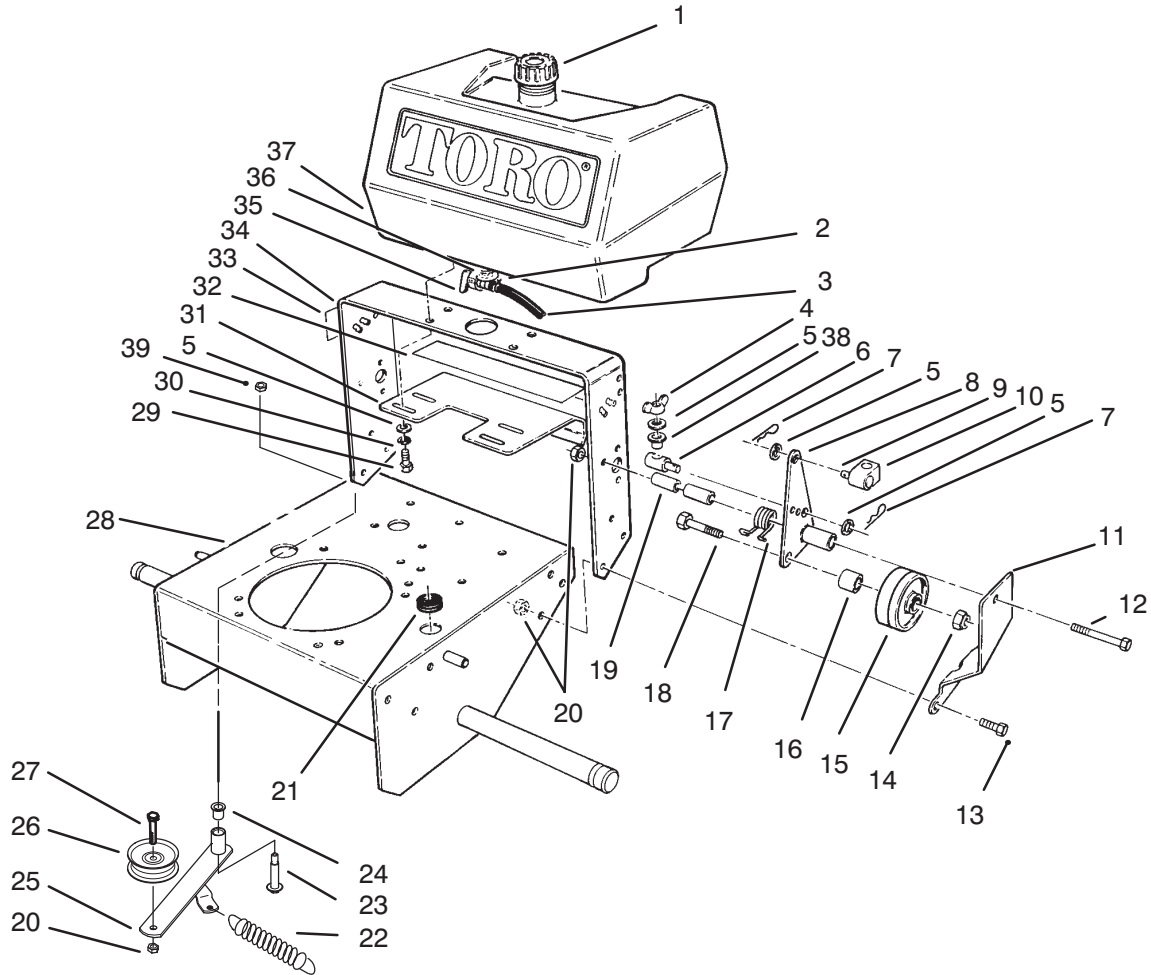
Ref. No.	Part No.	Description	No. Used
1	55-3570	Cap - Fuel Tank	1
2	2412-98	Clamp - Fuel line	1
3	47-2982	Hose - Fuel	1
4	32103-25	Nut - Wing	2
5	3256-23	Washer - Flat	10
6	68-9690	Fitting - Rod	2
7	3290-307	Pin - Cotter	4
8	74-0220	Idler - Bracket L.H.	1
*	74-0230	Idler - Bracket R.H.	2
9	283-6	Pin - Clevis	4
10	74-0521	Fitting - Rod	2
11	67-6380	Bracket - Support L.H.	1
*	67-6370	Bracket - Support R.H.	1
12	323-16	Screw - Hex. Hd.	2
13	323-6	Screw - Hex. Hd.	6
14	3296-23	Nut - Lock	2
15	51-4480	Idler - Wheel	2

Ref. No.	Part No.	Description	No. Used
16	51-4490	Spacer - Idler Wheel	2
17	51-4380	Spring - Torsion L.H.	1
*	51-4370	Spring - Torsion R.H.	1
18	51-4450	Screw - Leveler	2
19	74-0040	Spacer - Pivot Idler	4
20	3296-39	Nut - Lock	8
21	237-124	Grommet	1
22	68-2190	Spring - Extension	1
23	27-6230	Bolt - Wheel	1
24	256-155	Bushing	2
25	16-7509	Lever - Idler (Incl. Ref. #24)	1
26	62-4540	Pulley - Idler	1
27	323-8	Screw - Hex Hd. Cap	1
28	93-1156	Frame	1
29	322-4	Screw - Hex. Hd.	4
30	3253-4	Washer - Lock	4

*Not Illustrated

© The TORO Company -1995
All Rights Reserved

TPS



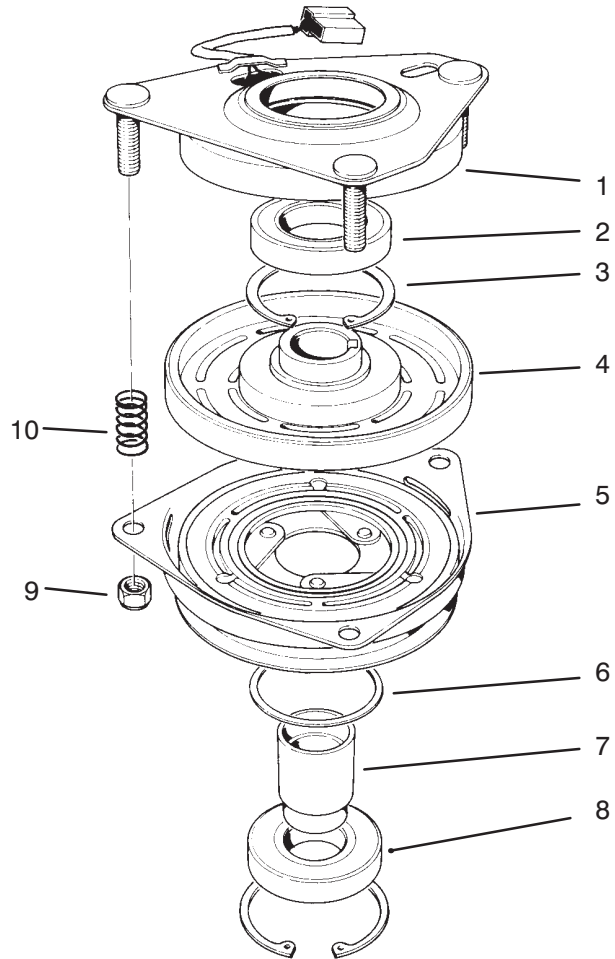
C-2098

FRAME ASSEMBLY(Continued)

Ref. No.	Part No.	Description	No. Used
31	66-7400	Plate - Control	1
32	82-7750	Decal - Ground Speed	1
33	74-0490	Decal - Fuel Shut Off	1
34	74-0360	Frame - Rear	1
35	74-0510	Valve - Fuel	1

Ref. No.	Part No.	Description	No. Used
36	237-7	"O"Ring	1
37	82-8440	Tank - Fuel	1
38	52-2890	Bushing	2
39	3296-6	Nut - Lock	1
*	71-3040	Replacement Axle Kit	1

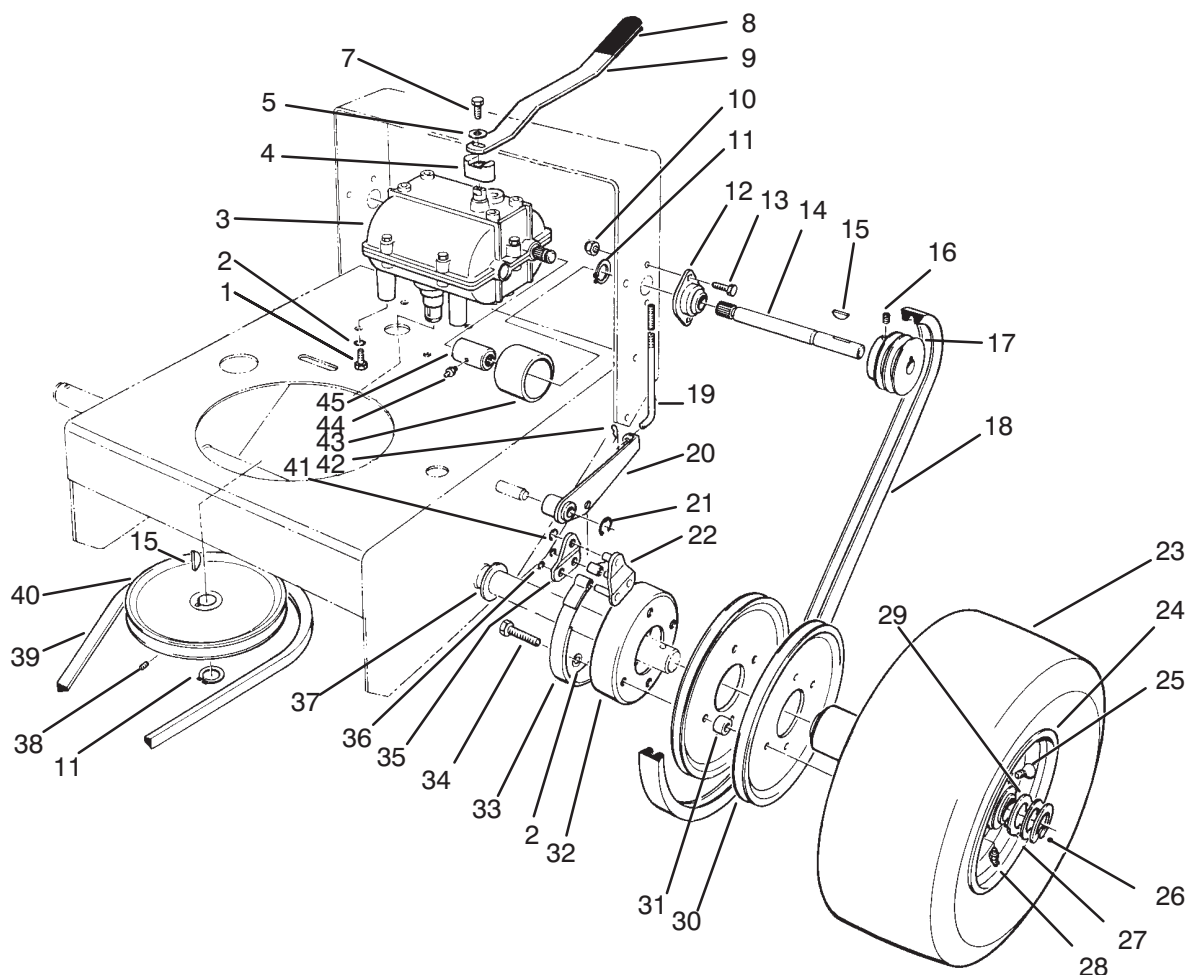
* Not Illustrated



T-0080

CLUTCH ASSEMBLY NO. 54-3200

Ref. No.	Part No.	Description	No. Used	Ref. No.	Part No.	Description	No. Used
1	54-0230	Field Assembly (Incl. Ref. # 2 & 3)	1	6	44-8330	Spacer - Pulley Bearing	1
2	251-292	Bearing - Field	1	7	44-8340	Collar - Bearing	1
3	44-8310	Ring - Retaining	2	8	251-291	Bearing - Pulley	1
4	44-8360	Field Coil, Rotor & Bearing Assembly (Incl. Ref. # 1)	1	9	3296-5	Nut - Lock	3
5	55-7410	Armature & Pulley Assembly (Incl. Ref. # 3, 6, 7, & 8)	1	10	44-8320	Spring	3



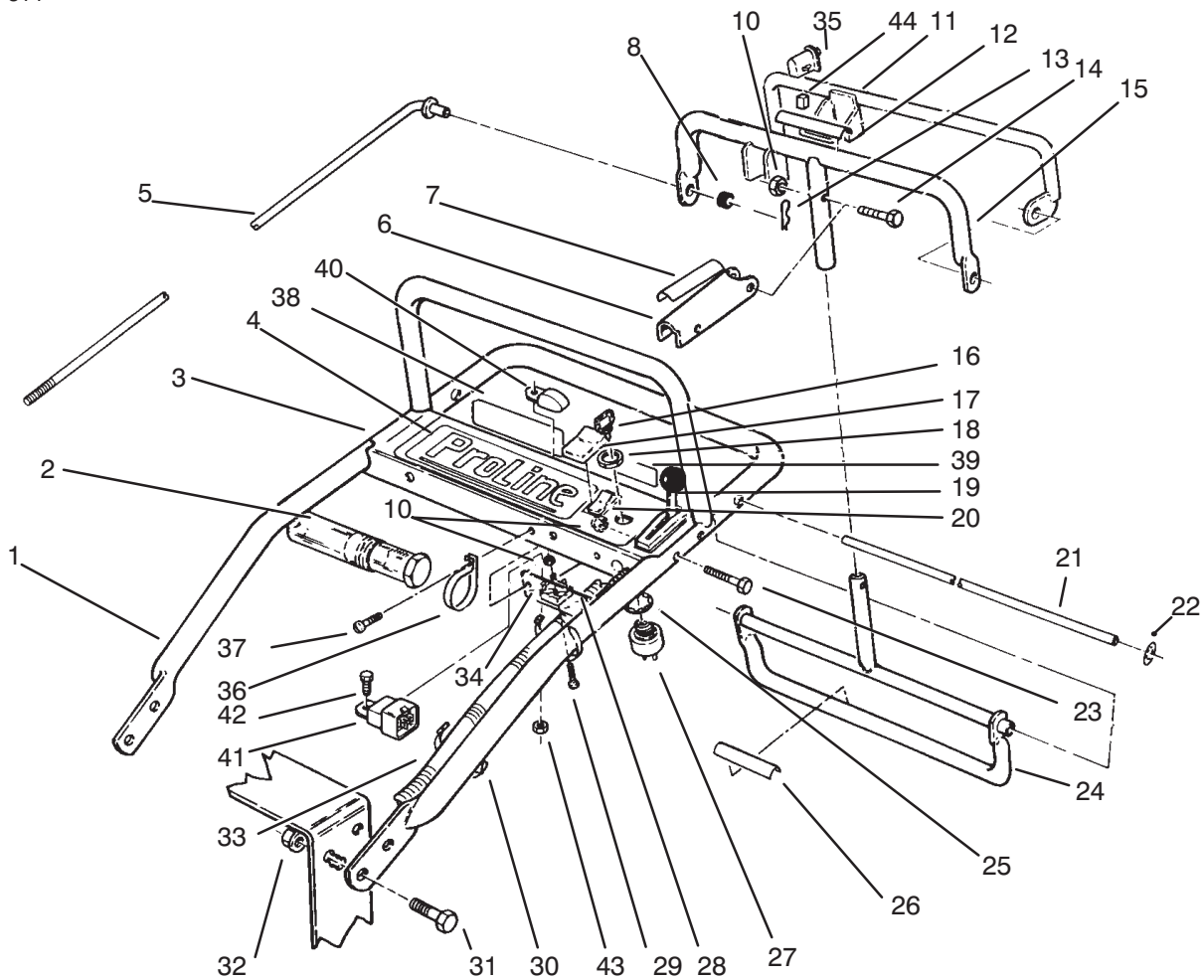
C-0502

AXLE ASSEMBLY

Ref. No.	Part No.	Description	No. Used
1	322-2	Screw - Hex. Hd.	4
2	3253-4	Washer - Lock	12
3	74-0610	Transmission	1
4	72-2190	Mount - Shift Lever	1
5	7-5461	Spacer	1
7	329-10	Screw - Hex. Hd.	1
8	47-1970	Grip - Engagement	1
9	74-0320	Lever - Shift	1
10	3296-42	Nut - Lock	4
11	32120-64	Ring - Retaining	3
12	51-4270	Bearing - Shaft Extension	2
13	321-4	Screw - Hex. Hd.	4
14	51-4240	Shaft - Extension R.H.	1
*	51-4250	Shaft - Extension L.H.	1
15	3257-5	Key - Woodruff	3
16	3245-3	Screw - Set Socket Hd.	2
17	74-0480	Pulley - Drive	2
18	51-4290	Belt - Drive	2
19	51-4580	Rod - Brake	2
20	51-4610	Brake Arm L.H.	1
*	51-4600	Brake Arm R.H.	1
21	32151-40	Ring - Retaining	2
22	51-4650	Link - Brake	2

Ref. No.	Part No.	Description	No. Used
23	231-117	Tire	2
24	242-80	Rim	2
25	232-27	Valve Stem	2
26	32151-91	Ring - Retaining	2
27	92-1746	Bearing	4
28	302-11	Grease Fitting	2
29	10-8110	Washer - Flat	A/R
30	51-4160	Pulley - Wheel	4
31	51-4170	Spacer - Pulley	8
32	51-4180	Drum - Brake	2
33	51-4700	Brake Band Assembly	2
34	322-7	Screw - Hex. Hd.	8
35	51-4660	Plate - Brake - Link	2
36	32151-72	Ring - Retaining	4
37	51-4230	Washer - Wheel	2
38	3241-5	Screw - Set	1
39	26-9670	Belt - Traction	1
40	51-4190	Pulley - Driven	1
41	32151-56	Ring - Retaining	2
42	3290-307	Pin - Cotter	2
43	51-4220	Guard - Coupler	2
44	302-5	Fitting - Grease	2
45	51-4260	Coupler	2

*Not Illustrated

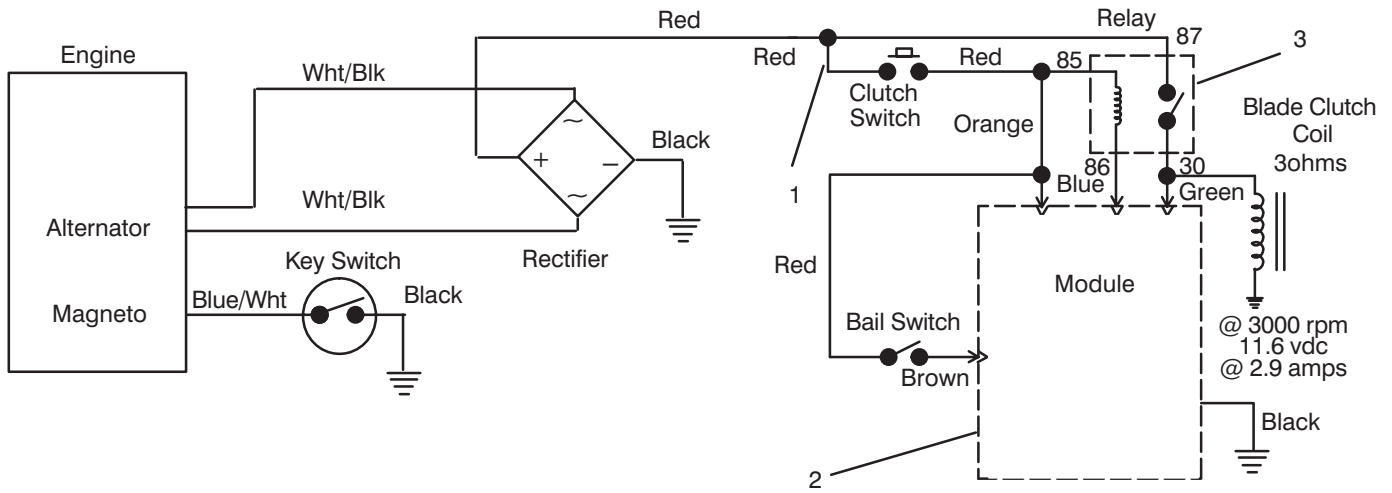


HANDLE ASSEMBLY

C-0506

Ref. No.	Part No.	Description	No. Used
1	67-6440	Handle - Upper	1
2	74-0720	Tube - Manual	1
3	82-2180	Panel - Control	1
4	82-7730	Decal - Proline	1
5	82-7631	Rod - Control	2
6	51-4850	Lever - Parking Brake	1
7	52-2010	Decal - Parking Brake	1
8	237-141	Grommet - Rubber	2
10	3296-2	Nut - Lock	6
11	82-7680	Bail Assembly	1
12	82-2290	Decal - Control Bar	1
13	3290-307	Pin - Cotter	2
14	32105-1	Screw - Hex. Hd. Machine	1
15	82-7690	Bar - Control	1
16	63-8360	Key	2
17	82-3820	Boot - Switch	1
18	218-461	Nut	1
19	74-0740	Control - Throttle	1
20	82-2300	Switch - Clutch	1
21	74-0470	Rod - Pivot	1
22	32151-80	Ring - Push On	2
23	32105-14	Screw - Hex. Hd. Machine	4

Ref. No.	Part No.	Description	No. Used
24	74-0380	Control - Pivot	1
25	3254-5	Washer - Lock	1
26	82-2280	Decal - Reverse Handle	1
27	29-5560	Switch - Off/On (Incl. Ref. #16, 18, & 25)	1
28	57-5811	Panel - Bottom	1
29	32105-13	Screw - Machine	1
30	3290-378	Cable Tie	2
31	3234-11	Screw - Hex. Hd.	4
32	32128-21	Nut - Hex. Flange	4
33		Wire Harness (Ref.)	1
34	37-7600	Bridge - Rectifier	1
35	82-2190	Switch - Bail	1
36	2412-120	R-Clamp	2
37	32144-19	Screw - Self Tapping	4
38	65-3090	Decal - Instruction	1
39	71-1280	Decal - Danger	1
40	86-7910	Module - Interlock	1
41	63-7590	Relay	1
42	321-2	Screw - Hex. Hd.	2
43	3296-42	Nut - Hex	2
44	218-595	Connector - Body	1

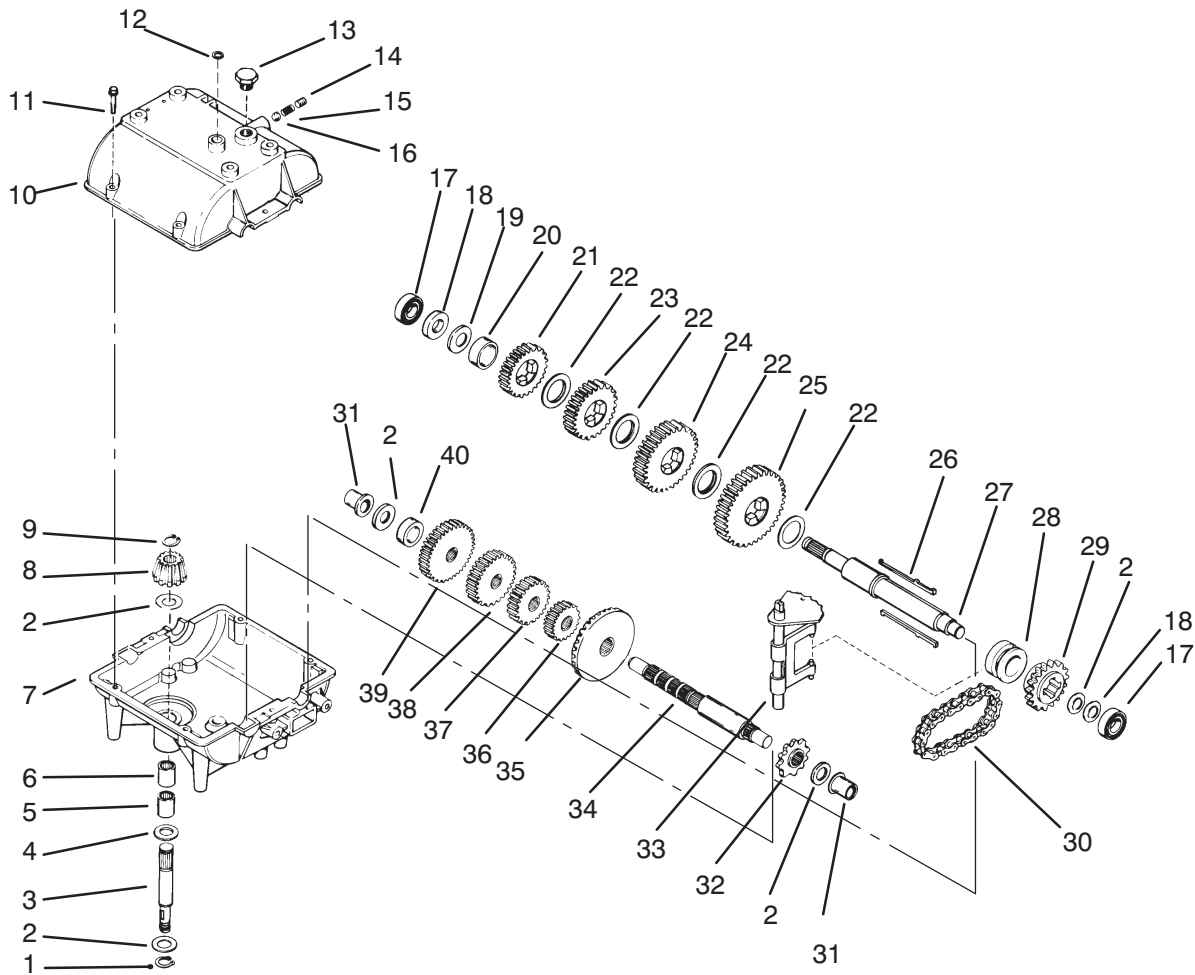


C-0707

ELECTRIC SCHEMATIC

Ref. No.	Part No.	Description	No. Used
1	82-2240	Wire Harness	1
2	86-7910	Module - Interlock	1

Ref. No.	Part No.	Description	No. Used
3	63-7590	Relay	1

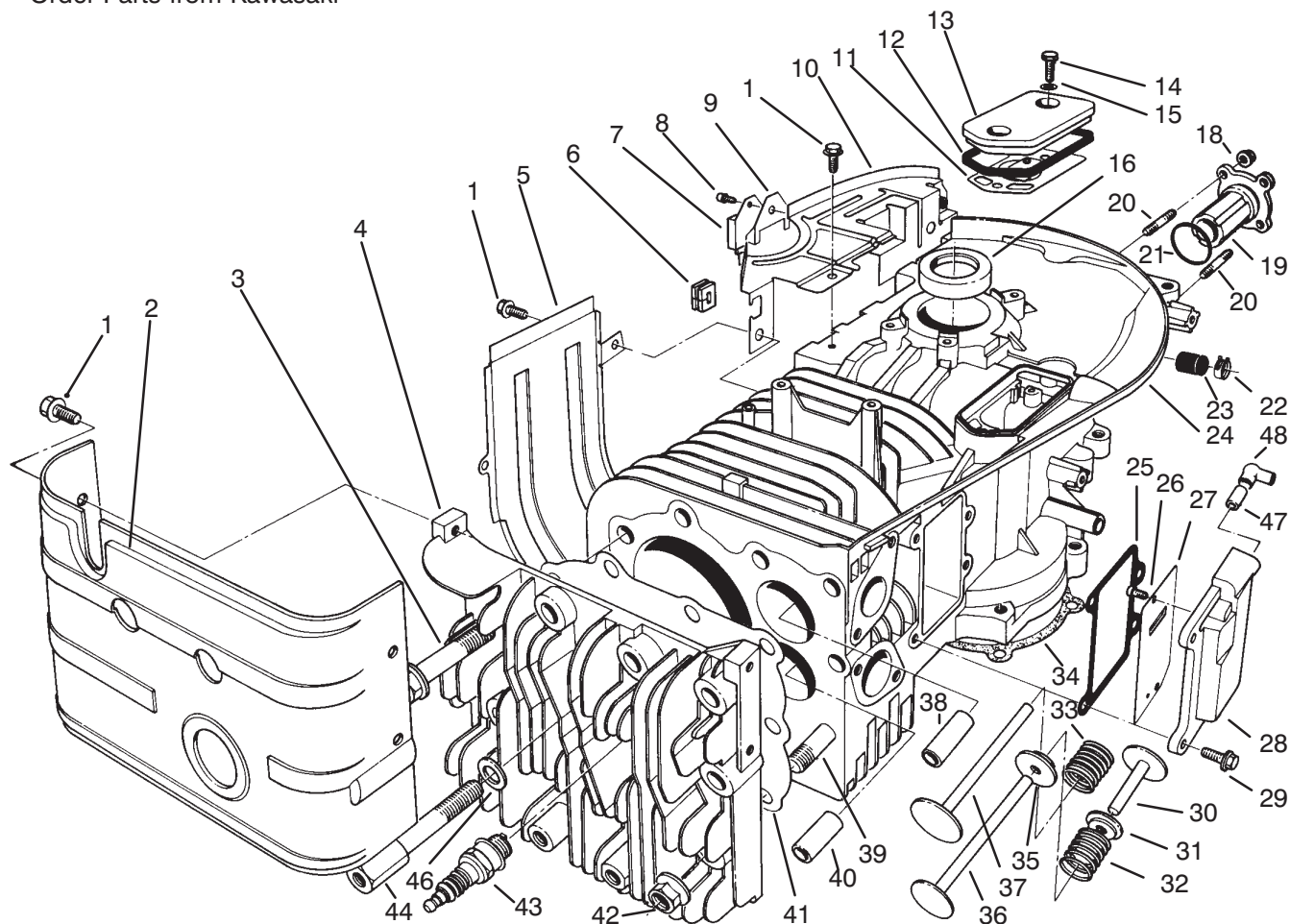


C-1776

PEERLESS TRANSMISSION MODEL NO. 700-039

Ref. No.	Part No.	Description	No. Used
1	792035	Ring – Retaining	1
2	780072	Washer – Thrust	5
3	776135	Shaft – Input	1
4	792001	”O”Ring	2
5	780142	Bearing – Needle	1
6	780086	Bearing – Needle	1
7	770090A	Case – Transmission	1
8	778153	Bevel Pinion – Input	1
9	788040	Ring – Retaining	1
10	772099A	Cover – Transmission	1
11	792073	Screw – Self Tapping	6
12	788069	Seal – Square Cut	1
13	792074	Plug – Threaded	1
14	792078	Screw – Set	1
15	792079	Spring	1
16	792077	Ball – Steel	1
17	780092	Bearing – Ball	2
18	780065	Washer – Thrust	2
19	780139	Washer – Thrust	1
20	786072	Spacer	1
21	778123A	Gear – Spur (25 Teeth)	1

Ref. No.	Part No.	Description	No. Used
22	780108	Washer – Thrust	4
23	778250	Gear – Spur (27 Teeth)	1
24	778124A	Gear – Spur (30 Teeth)	1
25	778125	Gear – Spur (35 Teeth)	1
26	792089A	Key	4
27	776289A	Shaft – Output & Brake	1
28	784266	Collar – Shift	1
29	786083	Sprocket (18 Teeth)	1
30	786081	Chain – Roller (No. 41 Chain 24 Links)	1
31	780105A	Bushing – Flanged	2
32	786082	Sprocket (9 Teeth)	1
33	784267	Rod & Fork Ass’y – Shift	1
34	776134	Shaft – Counter	1
35	778154	Gear – Bevel (42Teeth)	1
36	778136	Gear – Spur (15 Teeth)	1
37	778126A	Gear – Spur (20 Teeth)	1
38	778249	Gear – Spur (23 Teeth)	1
39	778127A	Gear – Spur (25 Teeth)	1
40	786071	Spacer	1

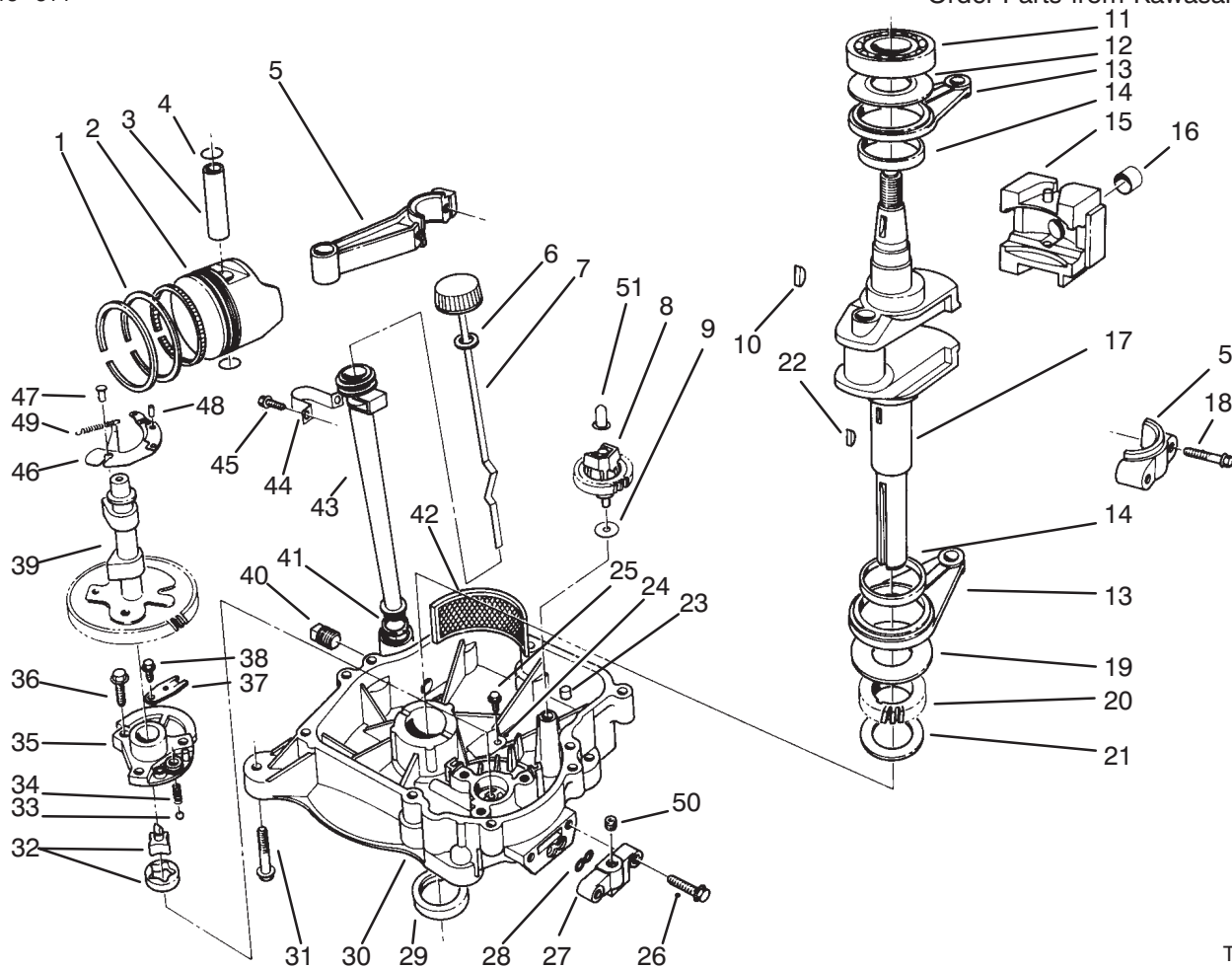


T-0509

ENGINE ASSEMBLY

Ref. No.	Part No.	Description	No. Used
1	130G0610	Bolt	8
2	49089-2181-9H	Shroud	1
3	130G1055	Bolt	4
4	11001-2102	Head - Cylinder	1
5	49089-2199-9H	Shroud	1
6	92071-2099	Grommet	6
7	21119-2095	Igniter	1
8	234B0408	Screw	1
9	310702-8137A	Bracket	1
10	59066-2295-9H	Housing - Fan	1
11	14069-2062	Breather	1
12	11009-2339	Gasket	1
13	14025-2040	Cover	1
14	315501-5381A	Bolt	2
15	312200-7415-02	Gasket	2
16	92049-2049	Seal - Oil	1
18	92015-1193	Nut	4
19	13107-2091	Shaft	1
20	92004-2083	Stud	4
21	92055-2072	"O"Ring	1
22	31796-6812-00	Clip	1
23	92066-2096	Plug	1
24	49120-6025	Crankcase Assembly	1
25	11009-2502	Gasket	1

Ref. No.	Part No.	Description	No. Used
26	314405-3092A	Screw	2
27	14025-2143	Cover	1
28	49108-2011	Cover - Valve Chamber	1
29	130G0616	Bolt	4
30	12032-2058	Tappet	2
31	39108-2054	Retainer - Spring	2
32	49078-2058	Spring - Valve	1
33	49078-2059	Spring - Valve	1
34	11009-2337	Gasket	1
35	12039-2052	Rotator	1
36	12005-2066	Valve - Exhaust	1
37	12004-2076	Valve - Intake	1
38	49002-2070	Guide - Intake Valve	1
39	92004-2082	Stud	3
40	49002-2071	Guide - Exhaust Valve	1
41	11004-2079	Gasket	1
42	92015-2115	Nut	3
43	92070-2072	Spark Plug	1
44	92002-2258	Bolt	2
46	410B1000	Washer	1
47	92059-2142	Tube	1
48	59071-2062	Joint	1



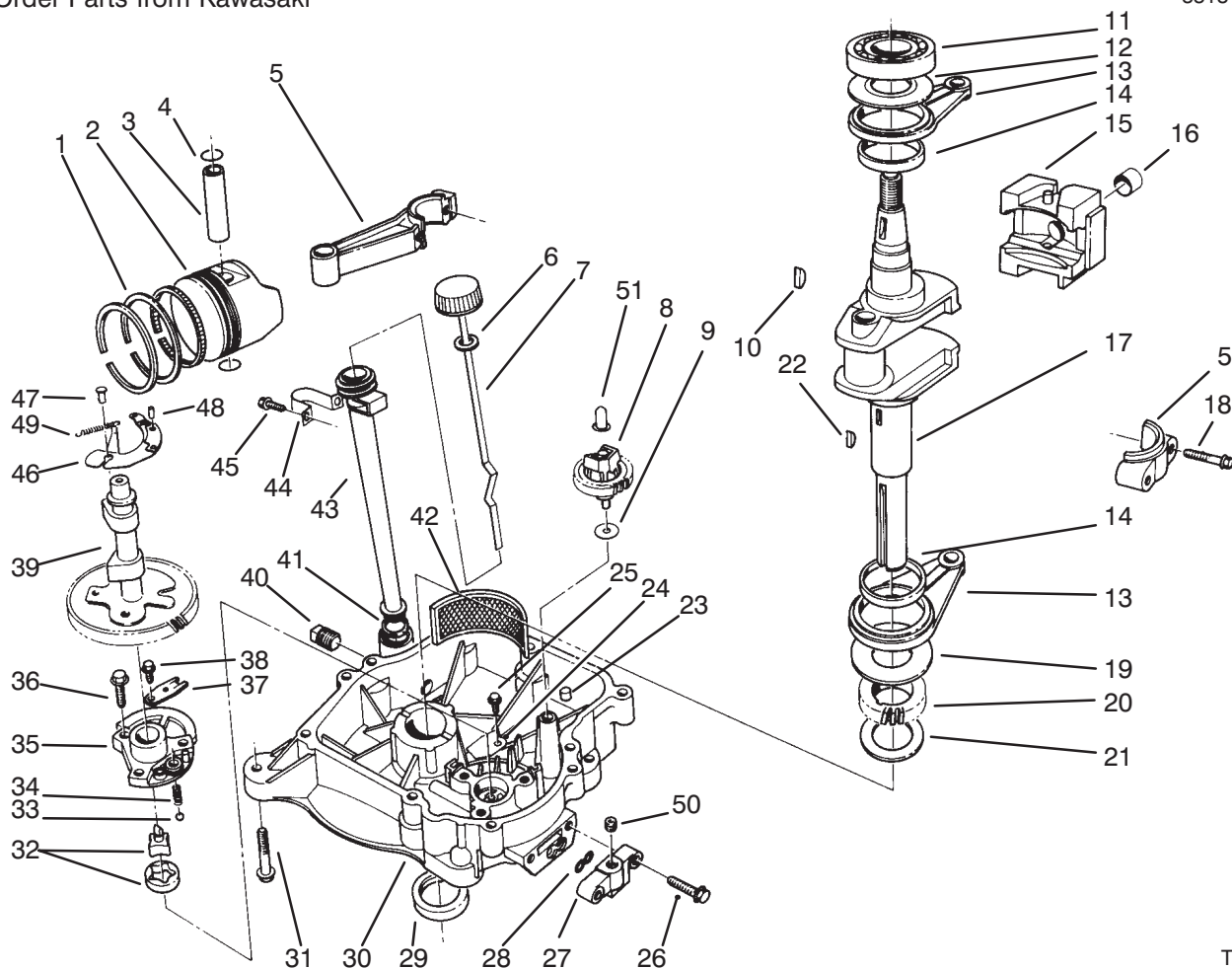
T-0510

CRANKCASE ASSEMBLY

Ref. No.	Part No.	Description	No. Used
1	13008-6001	Piston Ring Set (Std)	1
*	13008-6002	Piston Ring Set (.25MM)	A/R
*	13008-6003	Piston Ring Set (.50MM)	A/R
*	13008-6004	Piston Ring Set (.75MM)	A/R
2	13001-2084	Piston (Std)	A/R
*	13029-2019	Piston (.25MM)	A/R
*	13029-2020	Piston (.50MM)	A/R
*	13027-2001	Piston (.75MM)	A/R
3	13002-2066	Pin - Piston	1
4	92033-2066	Ring - Snap	2
5	13251-6005	Connecting Rod Assembly	1
*	13251-6007	Connecting Rod Assembly (.50MM)	A/R
6	11009-2346	Gasket	1
7	562005-2058	Gauge	1
8	49110-2067	Governor Assembly	1
9	314401-5135A	Washer	1
10	92038-2094	Key	1

Ref. No.	Part No.	Description	No. Used
11	601A6207	Bearing - Ball	1
12	92026-2164	Spacer	1
13	46102-6001	Rod Assembly	2
14	92141-2094	Bearing Plane	2
15	13042-6006	Weight	1
16	92141-2097	Bushing	1
17	49119-2133	Crankshaft	1
18	315801-3245A	Bolt	2
19	92026-2156	Spacer	1
20	59056-2105	Gear	1
21	92025-2145	Shim (1.18)	A/R
*	92025-2146	Shim (1.25)	A/R
*	92025-2147	Shim (1.32)	A/R
*	92025-2148	Shim (1.39)	A/R
*	92025-2149	Shim (1.46)	A/R
*	92025-2150	Shim (1.53)	A/R
*	92025-2151	Shim (1.60)	A/R
*	92025-2152	Shim (1.67)	A/R
*	92025-2153	Shim (1.74)	A/R
22	92038-2094	Key	1
23	92043-1263	Pin - Dowel	2
24	13169-2359	Plate	1
25	130B0508	Bolt	1

*Not Illustrated

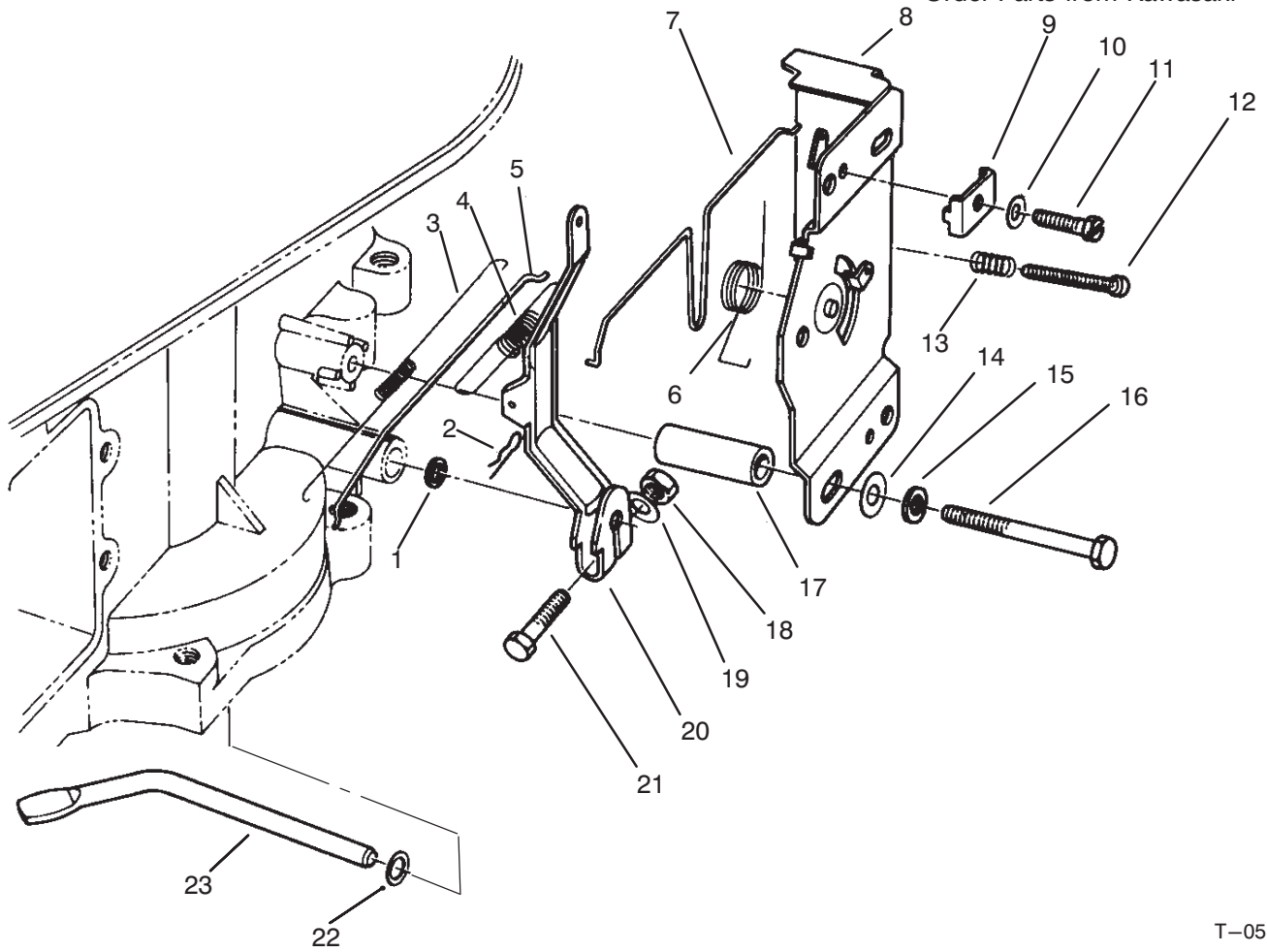


T-0510

CRANKCASE ASSEMBLY (Continued)

Ref. No.	Part No.	Description	No. Used
26	130B0830	Bolt	2
27	14025-2145	Cover	1
28	92055-2063	"O"Ring	1
29	92049-2104	Seal - Oil	1
30	49015-6001	Cover - Crankcase	1
31	130G0845	Bolt	4
32	16082-2057	Oil Pump Assembly	1
33	600A1000	Ball	1
34	92081-2216	Spring	1
35	16142-6001	Cover - Pump	1
36	138G0825	Bolt	3
37	13169-2360	Plate	1
38	130B0610	Bolt	1

Ref. No.	Part No.	Description	No. Used
39	49118-2064	Camshaft Compression	1
40	92066-2097	Plug - Drain	1
41	670D2016	"O"Ring	1
42	49065-2056	Filter - Oil	1
43	59231-2059	Tube - Filter Oil	1
44	92037-2160-9H	Clamp	1
45	130B0508	Screw	1
46	21118-2068	Decompressor	1
47	92043-2113	Pin	2
48	92043-2167	Pin	1
49	92144-2171	Spring	1
50	92066-2102	Plug	1
51	42036-2060	Sleeve	1

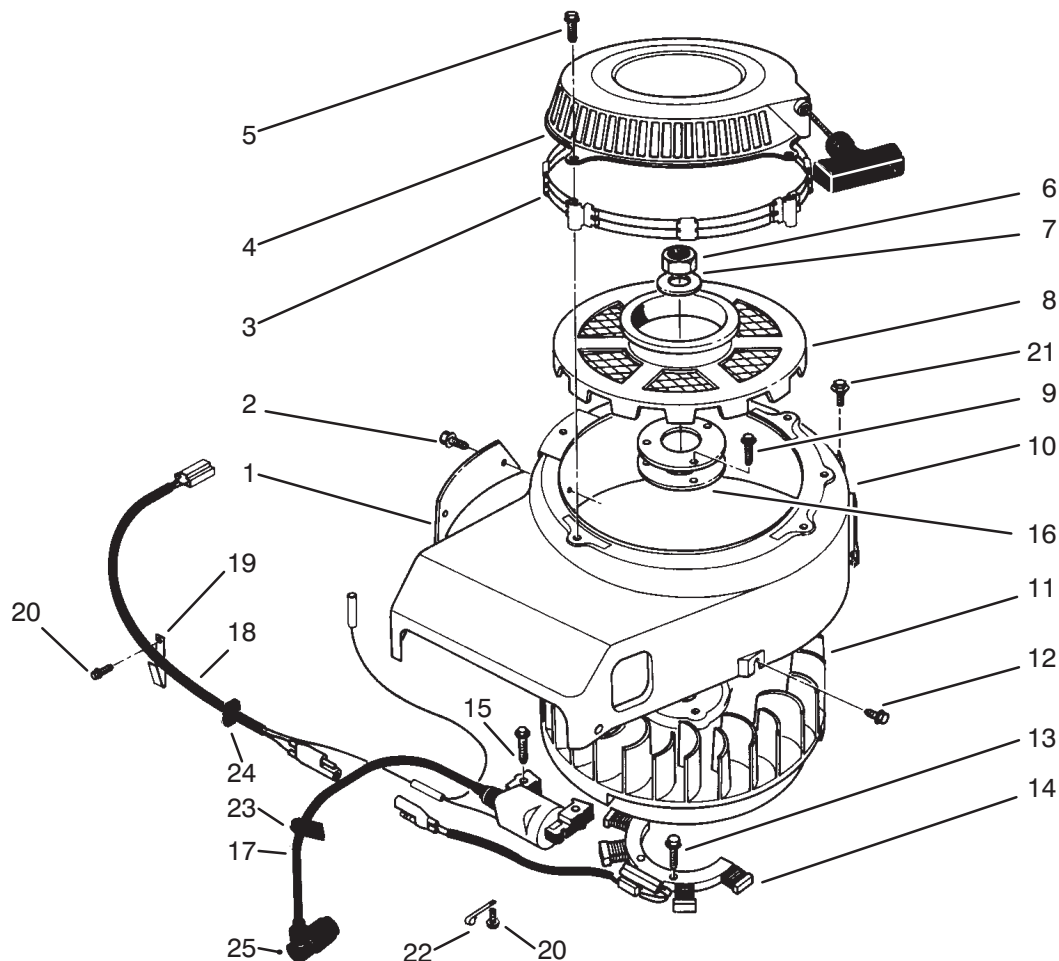


T-0511

GOVERNOR ASSEMBLY

Ref. No.	Part No.	Description	No. Used
1	92049-2097	Seal – Oil	1
2	554A0600	Pin – Cotter	1
3	92081-2213	Spring	1
4	39129-2010	Spring	1
5	16171-2001	Link	1
6	920981-2316	Spring	1
7	16169-2074	Link – Choke	1
8	49113-2067	Control Panel Assembly	1
9	92037-2020	Clamp	1
10	411B0500	Washer	1
11	310701-1225A	Bolt	1

Ref. No.	Part No.	Description	No. Used
12	214B0425	Screw	1
13	314401-5321B	Spring	1
14	311509-3595-00	Washer	2
15	461F0600	Washer – Lock	2
16	112B0650	Bolt	2
17	92027-2071	Collar	2
18	311B0600	Nut	1
19	411B0600	Washer	1
20	21187-2052	Arm – Governor	1
21	92002-2269	Bolt	1
22	410B0600	Washer	1
23	39003-2062	Arm – Pivot	1



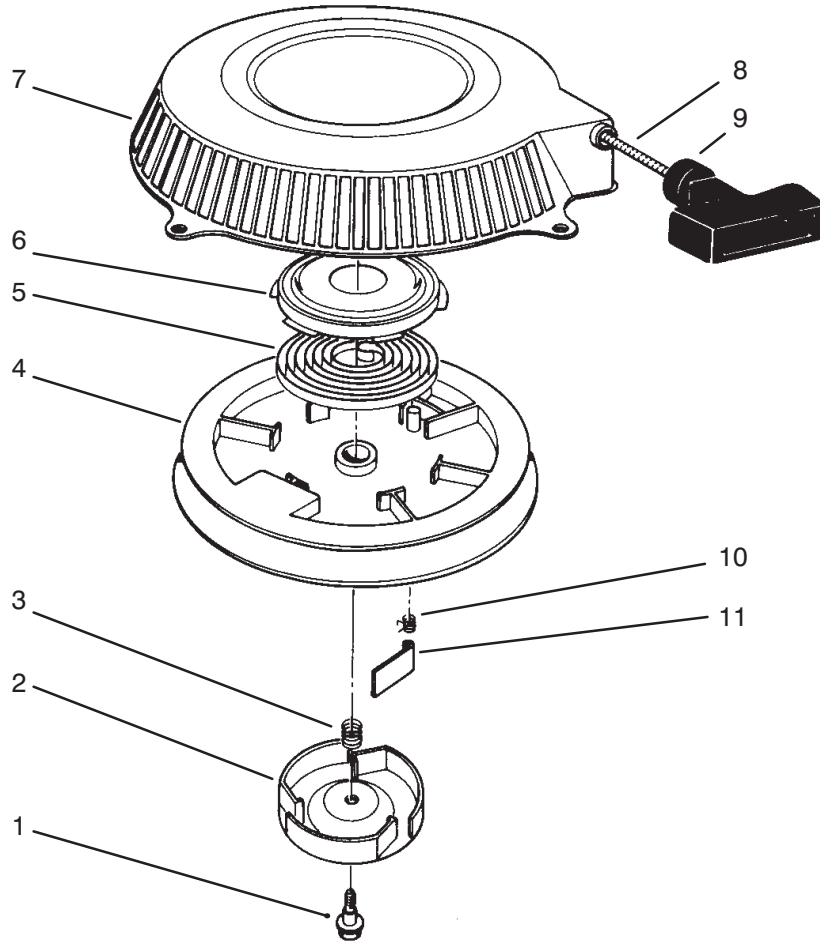
T-0512

RECOIL & FLYWHEEL ASSEMBLY

Ref. No.	Part No.	Description	No. Used
1	14024-2038-9H	Cover	1
2	234B0408	Screw	2
3	55020-2054	Guard	1
4	49088-2212-YK	Recoil Starter Ass'y	1
5	130B0635	Bolt	4
6	314G1800	Nut	1
7	92022-2178	Washer	1
8	49080-22123YK	Pulley	1
9	130G0812	Bolt	3
10	59066-2310-9H	Housing - Fan	1
11	21194-2001	Flywheel	1
12	130B0610	Bolt	2
13	244B0620	Screw	2

Ref. No.	Part No.	Description	No. Used
14	59031-2065	Coil	1
15	130B0525	Bolt	2
16	92025-2161	Shim	A/R
17	21121-2008	Coil	1
18	26001-2113	Wire Harness	1
19	313646-8161-00	Clamp	1
20	130G0610	Screw	2
21	130G0614	Bolt	2
22	92037-2158	Clamp	1
23	92071-2100	Grommet	1
24	92071-2099	Grommet	1
25	21130-2060	Cap Spark Plug	1
*	26011-2119	Wire Lead	1

*Not Illustrated



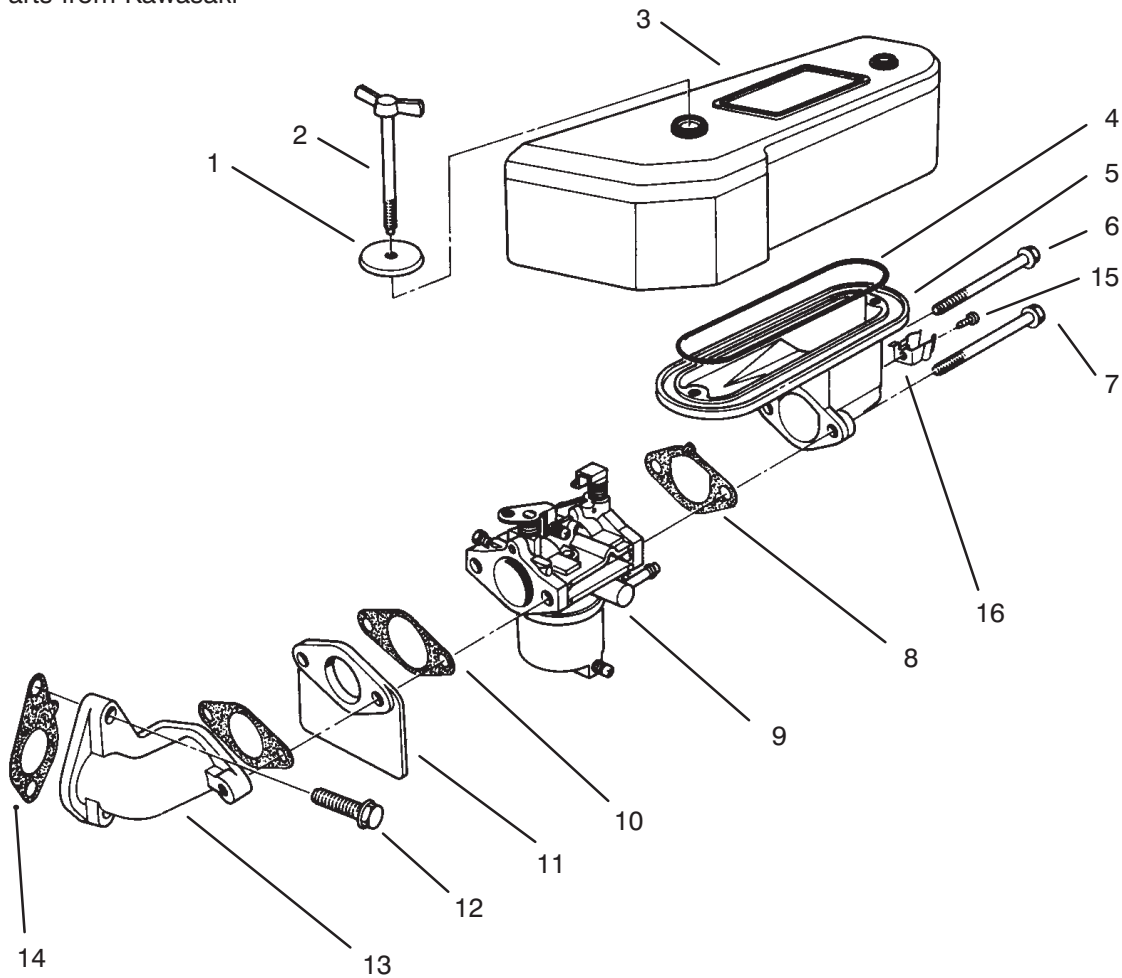
T-0513

RECOIL STARTER

Ref. No.	Part No.	Description	No. Used
1	314501-3447A	Bolt	1
2	14020-2054	Retainer	1
3	92081-2268	Spring	1
4	59101-2054	Reel	1
5	92081-2267	Spring	1
6	32099-2060	Case	1

Ref. No.	Part No.	Description	No. Used
7	32099-2059YK	Case	1
8	59106-2060	Rope	1
9	46075-2059	Grip	1
10	314401-3444A	Spring - Return	3
11	13165-2057	Pawl	3
*	49088-2212-YK	Recoil Starter Ass'y	1

*Not Illustrated

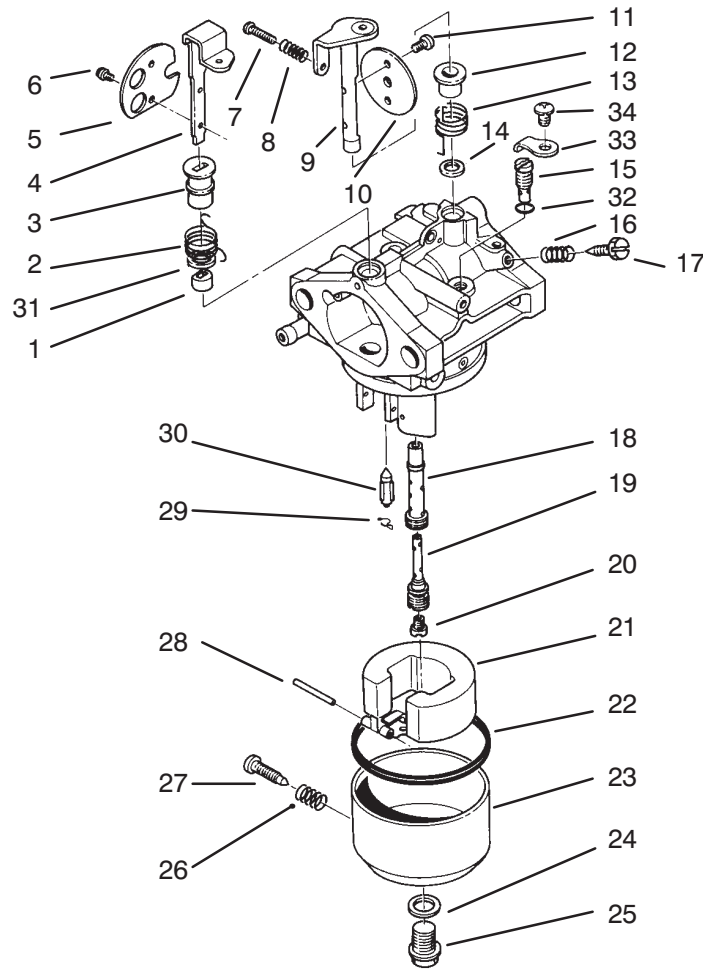


T-0514

AIR CLEANER & CARBURETOR ASSEMBLY

Ref. No.	Part No.	Description	No. Used
1	92022-2220	Washer	2
2	92002-2230	Bolt	2
3	11010-2291	Air Cleaner Assembly	1
4	11009-2443	Gasket	1
5	16060-2108	Pipe - Intake	1
6	92002-2254	Bolt	1
7	92002-2253	Bolt	1
8	11009-2344	Gasket	1

Ref. No.	Part No.	Description	No. Used
9	15001-2721	Carburetor Assembly	1
10	11009-2343	Gasket	2
11	16073-2091	Insulator	1
12	130G0825	Bolt	2
13	16060-2109	Pipe - Intake	1
14	11009-2342	Gasket	1
15	224B0508	Screw	1
16	92037-2019	Clamp	1

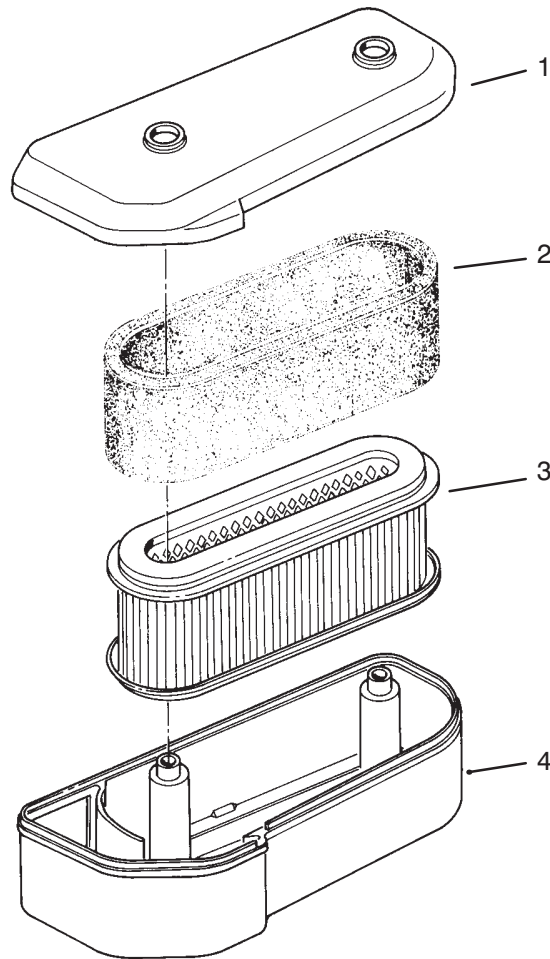


T-0515

CARBURETOR ASSEMBLY

Ref. No.	Part No.	Description	No. Used	Ref. No.	Part No.	Description	No. Used
1	314598-6138A	Ring	1	19	49123-2058	Pipe – Bleed	1
2	92144-2160	Spring	1	20	92063-2010	Jet	1
3	92143-2142	Ring	1	21	16031-2066	Float	1
4	16041-2010	Shaft – Choke	1	22	313650-6128-00	Gasket	1
5	16126-2105	Valve – Choke	1	23	16020-2094	Chamber – Float	1
6	314572-6137A	Screw	2	24	318190-6159-00	Washer	1
7	92009-2079	Screw	1	25	3114486-6143A	Bolt	1
8	313650-6108-00	Spring	1	26	313122-6116-00	Spring	1
9	16041-2009	Shaft – Throttle	1	27	315470-6133A	Screw	1
10	16025-2114	Valve – Throttle	1	28	314499-6127A	Pin – Float	1
11	316550-6137A	Screw	2	29	315721-6134A	Clip	1
12	92027-2025	Ring	1	30	16030-2021	Valve – Needle	1
13	92081-2977	Spring	1	31	92093-2069	Seal	1
14	316626-6206A	Seal	1	32	16038-024	"O"Ring	1
15	92064-2062	Jet	1	33	13183-2252	Plate	1
16	312750-6116-00	Spring	1	34	92009-2244	Screw	1
17	16014-2055	Screw	1	*	15001-2721	Carburetor Assembly	1
18	49121-2077	Nozzle	1				

*Not Illustrated

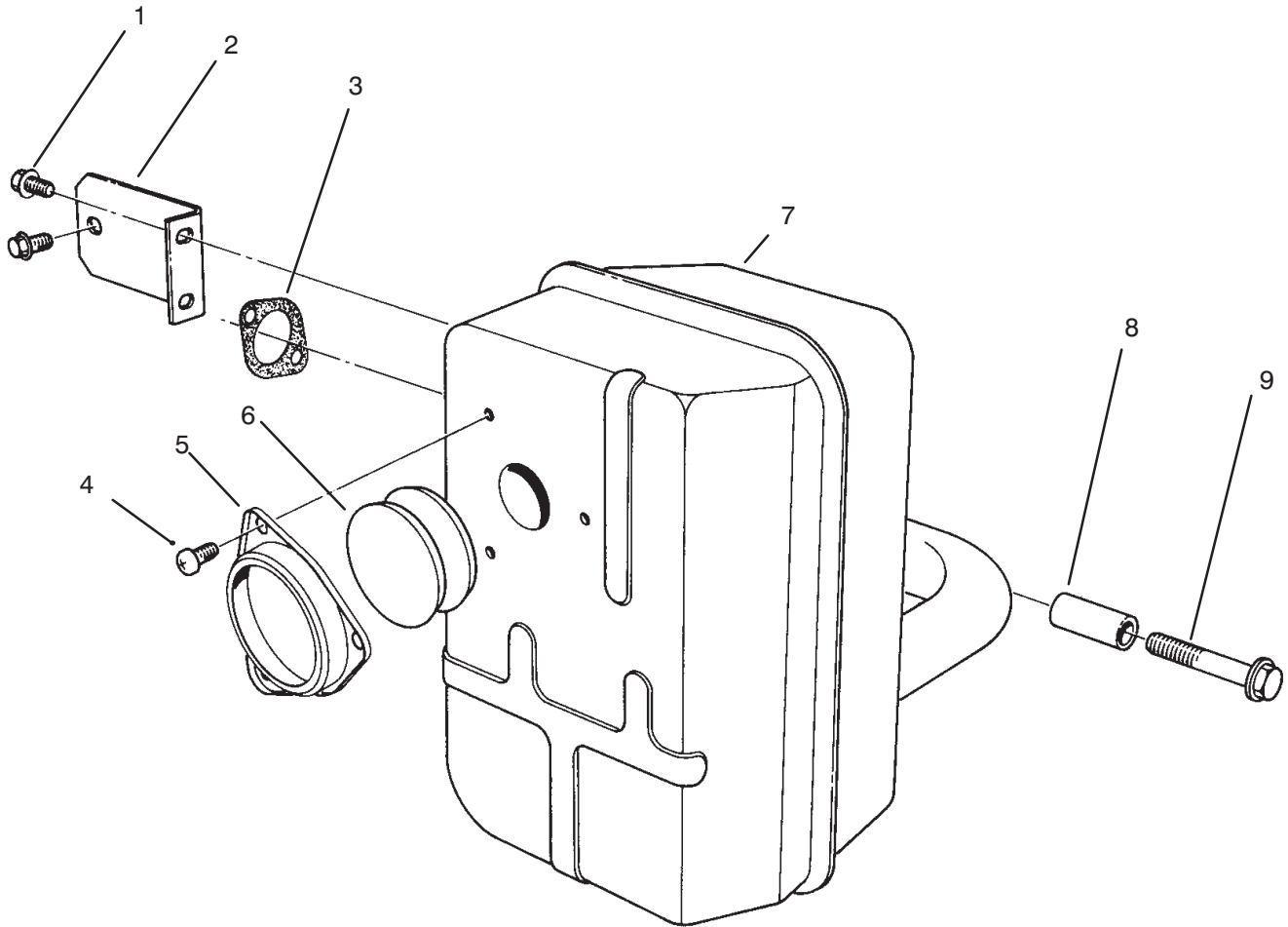


T-0516

AIR CLEANER ASSEMBLY

Ref. No.	Part No.	Description	No. Used	Ref. No.	Part No.	Description	No. Used
1	11012-2192	Cap – Air Cleaner	1	4	11011-2174	Case – Air Cleaner	1
2	11013-2020	Element	1	*	11010-2291	Air Cleaner Assembly	1
3	11013-2021	Element	1				

*Not Illustrated

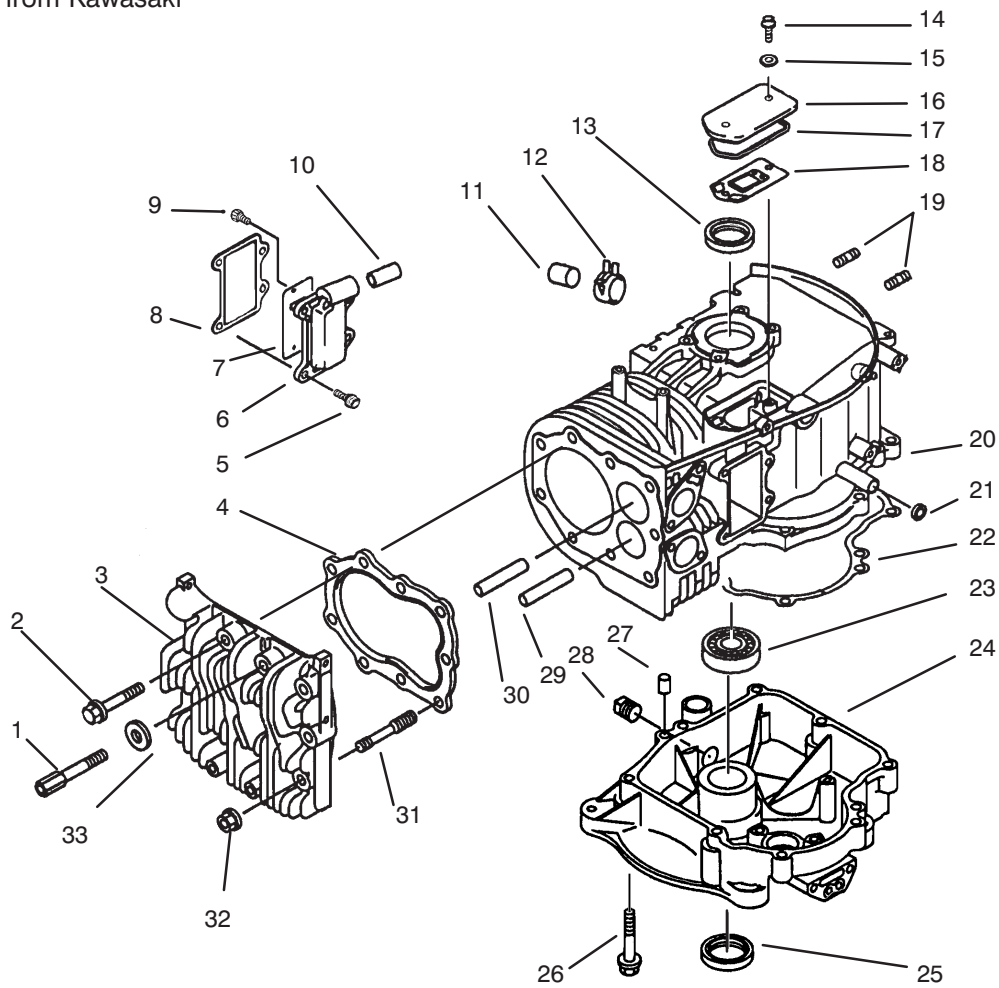


T-0517

MUFFLER ASSEMBLY

Ref. No.	Part No.	Description	No. Used
1	130G0812	Bolt	4
2	11044-2069-9Y	Bracket	1
3	11009-2378	Gasket	1
4	92009-2166	Screw	3
5	11012-2165-9Y	Cap	1

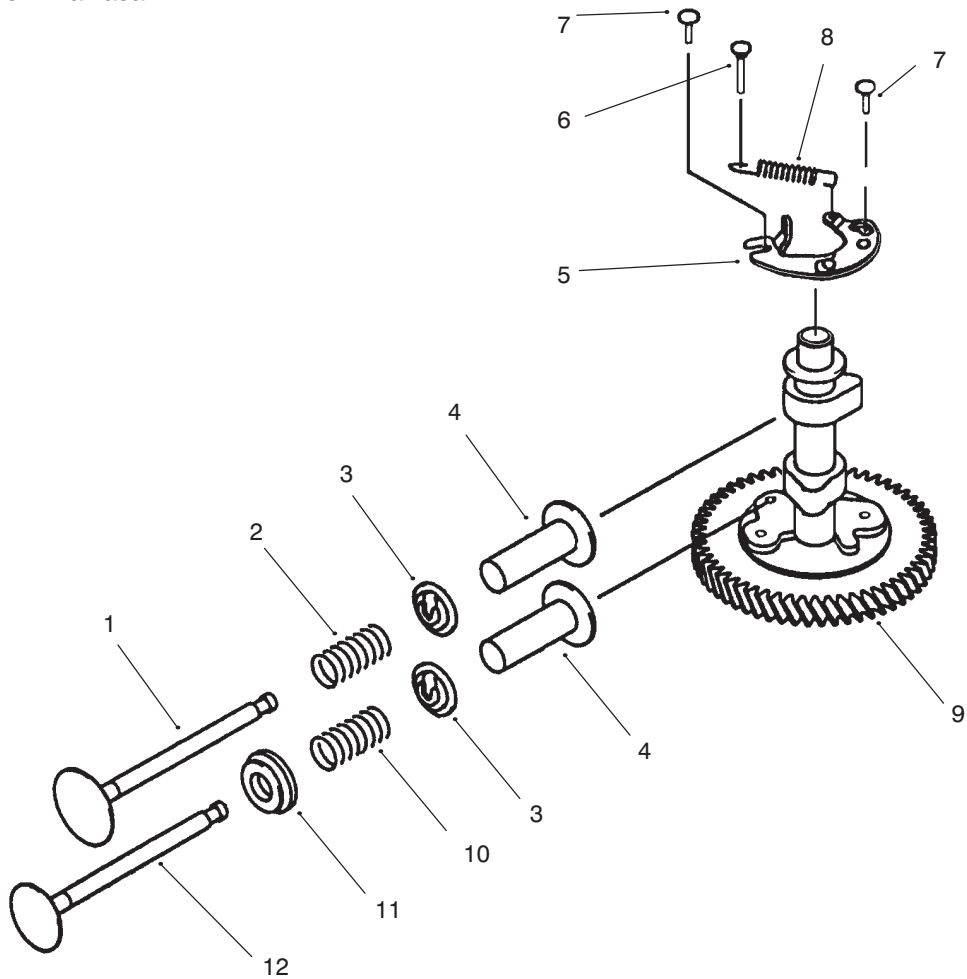
Ref. No.	Part No.	Description	No. Used
6	18077-2052	Spark Arrestor	2
7	49069-2190-9Y	Muffler Assembly	1
8	92027-2081	Collar	2
9	130G0845	Bolt	2



CRANKCASE

Ref. No.	Part No.	Description	No. Used
1	92002-2258	Bolt	2
2	130G1055	Bolt - Flanged	4
3	11001-2151	Head - Cylinder	1
4	11004-2091	Gasket - Head	1
5	130G0616	Bolt - Flanged	4
6	49108-2011	Cover - Valve Chamber	1
7	14025-2143	Cover	1
8	11060-2059	Gasket	1
9	92009-2307	Screw	2
10	92059-2142	Tube - 10 x 14 x 29-1/2	1
11	92066-2096	Plug	1
12	92170-2043	Clamp	1
13	92049-2096	Seal - Oil	1
14	92002-2087	Bolt	2
15	11060-2323	Gasket	2
16	14025-2040	Cover - Breather	1
17	11009-2339	Gasket - Cover	1

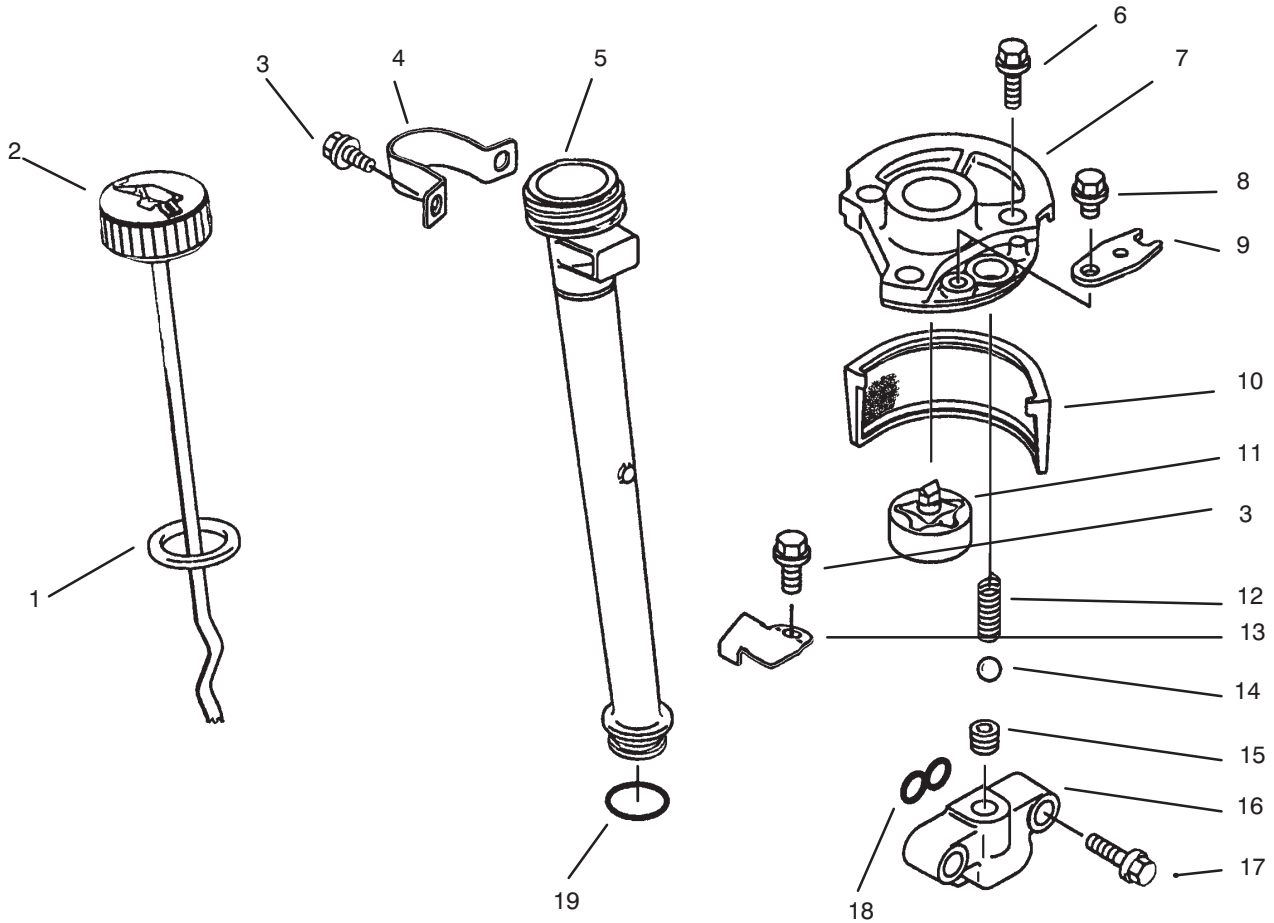
Ref. No.	Part No.	Description	No. Used
18	14069-2062	Breather	1
19	92004-2083	Stud - 6 x 14	4
20	49120-6108	Crankcase - Complete (Incl. Ref. #29, 30)	1
21	92049-2097	Seal - Oil	1
22	11060-2015	Gasket - Crankcase	1
23	601A6207	Bearing - Ball	1
24	49015-6176	Cover - Crankcase	1
25	92049-2104	Seal - Oil	1
26	130G0845	Bolt - Flanged	8
27	92043-1263	Pin	2
28	92066-2097	Plug	1
29	49002-2071	Guide - Valve, Exhaust	1
30	49002-2070	Guide - Valve, Intake	1
31	92004-2082	Stud	3
32	92015-2115	Nut - 10 MM	3
33	410B1000	W-Plain-S	2



VALVE / CAMSHAFT

Ref. No.	Part No.	Description	No. Used
1	12004-2076	Valve - Intake	1
2	49078-2059	Spring - Engine Valve	1
3	39108-2054	Retainer - Spring	2
4	12032-2058	Tappet	2
5	21118-2068	Decompressor	1
6	92043-2167	Pin	1
7	92043-2113	Pin	2

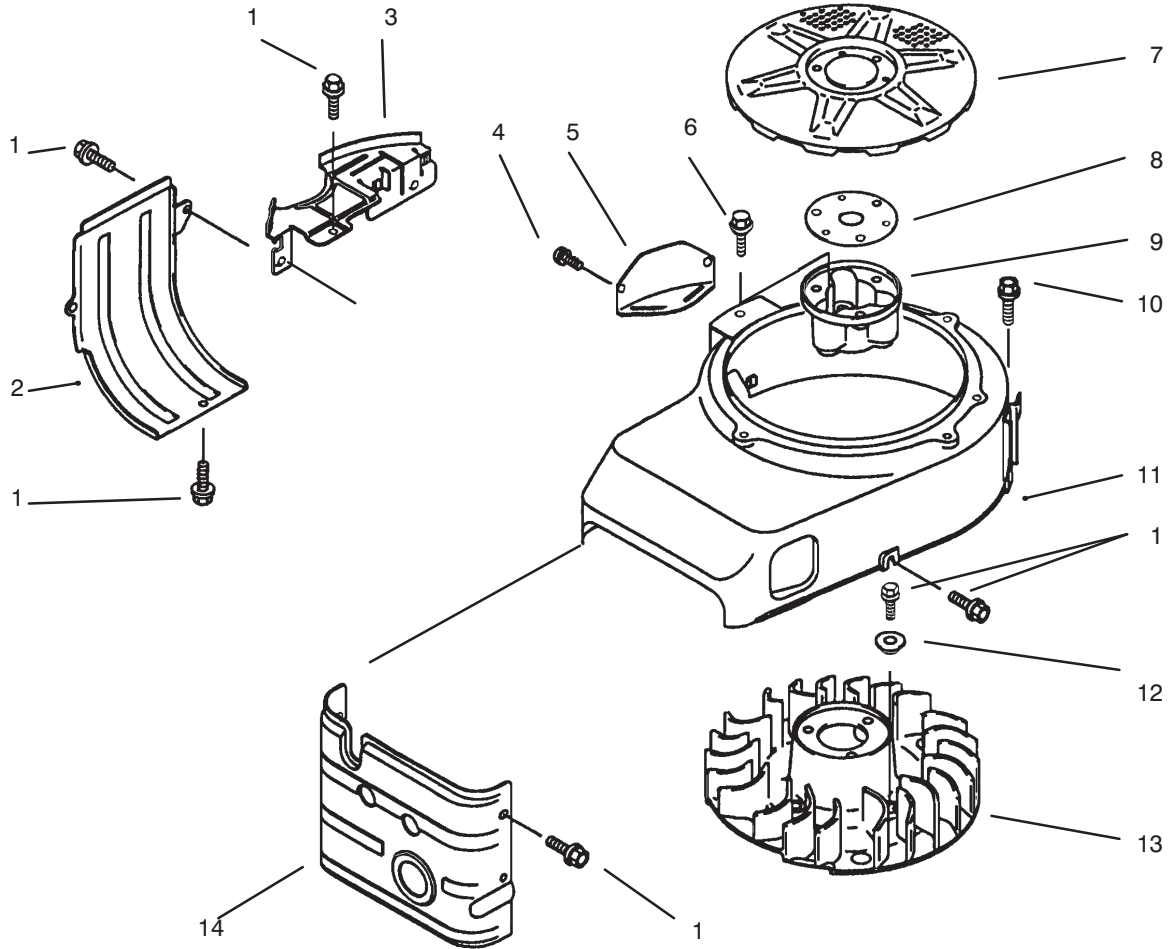
Ref. No.	Part No.	Description	No. Used
8	92144-2171	Spring	1
9	49118-2134	Camshaft - Complete (Incl. Ref. #5-8)	1
10	49078-2058	Spring - Engine Valve	1
11	12039-2052	Rotator	1
12	12005-2066	Valve - Exhaust	1



LUBRICATION EQUIPMENT

Ref. No.	Part No.	Description	No. Used
1	11009-2346	Gasket - Oil Gauge	1
2	52005-2058	Gauge - Oil	1
3	130B0508	Bolt - Flanged	3
4	92170-2014-9H	Clamp	1
5	59231-2059	Filler	1
6	130G0825	Bolt - Flanged	3
7	16142-6001	Cover - Pump	1
8	130B0610	Bolt - Flanged	1
9	13270-2054	Plate	1
10	49065-2056	Filter - Oil	1

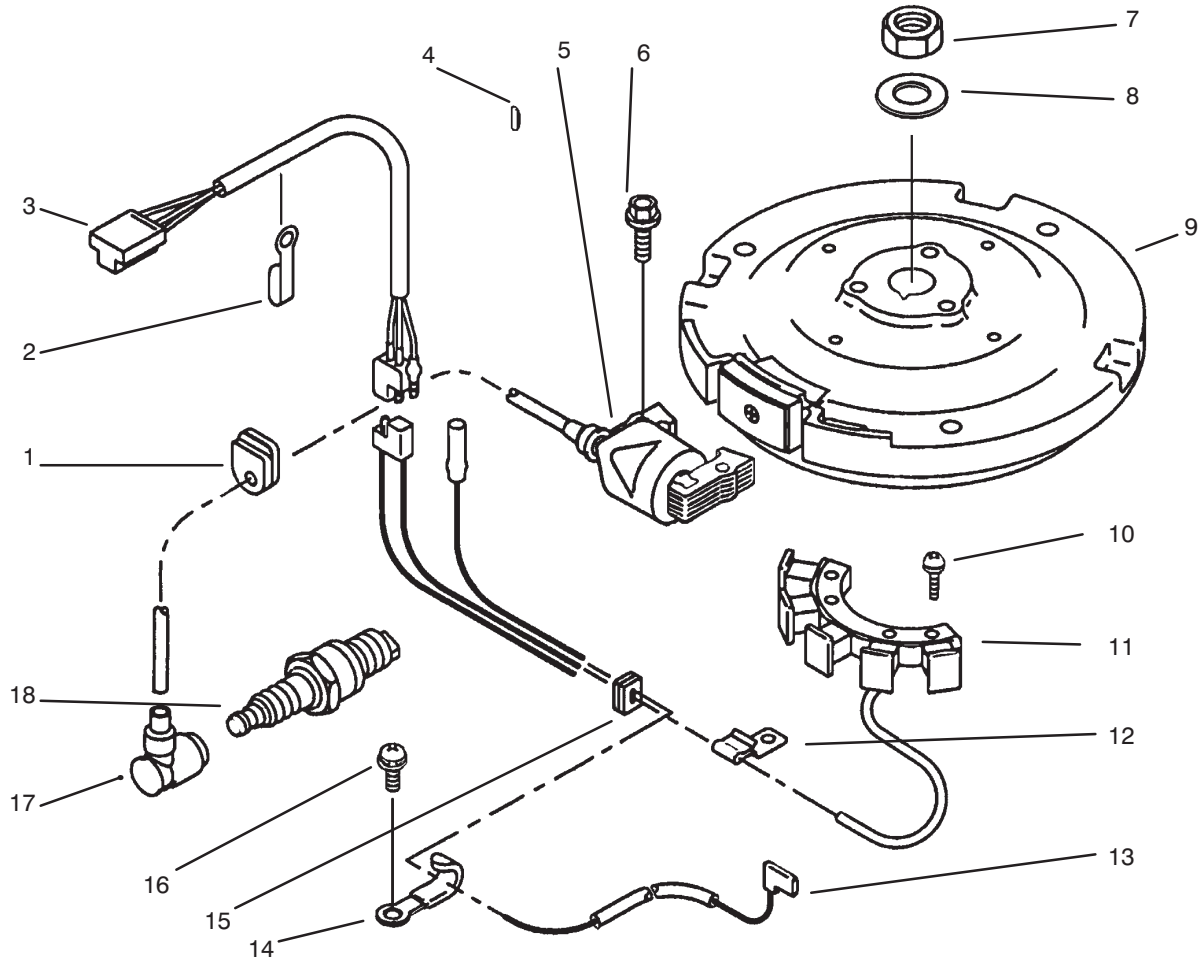
Ref. No.	Part No.	Description	No. Used
11	16082-2057	Pump - Assembly, Oil	1
12	92081-2216	Spring	1
13	13169-2359	Plate	1
14	600A1000	Ball - Steel	1
15	92066-2211	Plug	1
16	14025-2145	Cover	1
17	130B0830	Bolt - Flanged	2
18	92055-2063	Ring-O	1
19	670D2016	Ring-O	1



COOLING EQUIPMENT

Ref. No.	Part No.	Description	No. Used
1	130G0610	Bolt – Flanged	9
2	49089-2199-9H	Shroud – Engine	1
3	59066-2295-9H	Housing – Fan	1
4	234B0408	Screw – Pan-WSP	2
5	14024-2038-9H	Cover	1
6	130B0820	Bolt – Flanged	3
7	14037-2104-9H	Screen	1

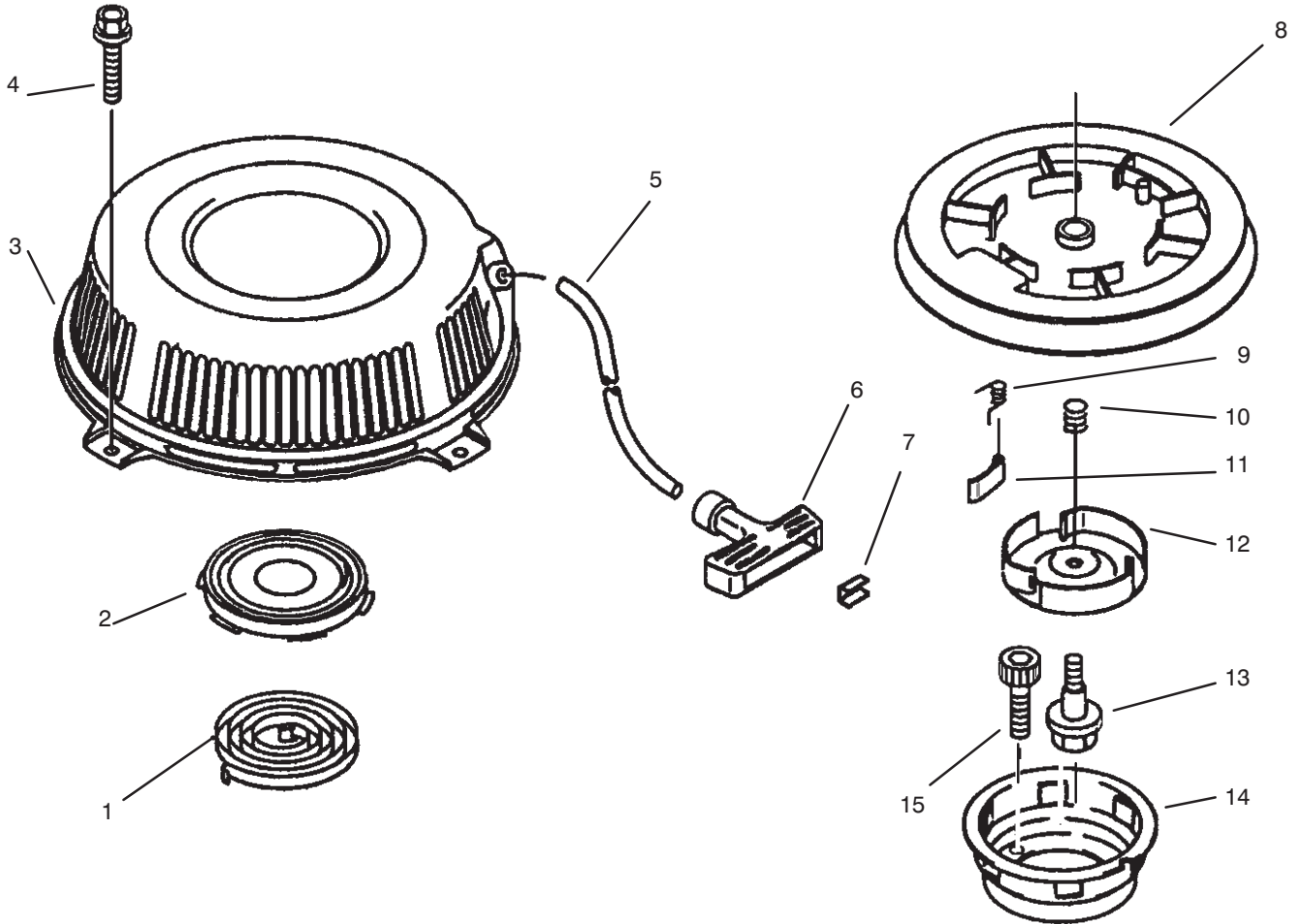
Ref. No.	Part No.	Description	No. Used
8	92025-2003	Shim, T=1.20	AR
9	11044-2084	Bracket	1
10	130G0614	Bolt – Flanged	6
11	59066-2310-9H	Housing – Fan	1
12	92143-2179	Collar	4
13	59041-2081	Fan	1
14	49089-2181-9H	Shroud – Engine	1



ELECTRIC EQUIPMENT

Ref. No.	Part No.	Description	No. Used
1	92071-2100	Grommet	1
2	92037-2063	Clamp	1
3	26001-2113	Harness	1
4	92038-2094	Key	1
5	21121-2086	Coil - Ignition	1
6	130B0520	Bolt - Flanged	2
7	314G1800	Nut - Hex, Fine	1
8	92022-2178	Washer	1
9	21194-2297	Flywheel - Complete	1

Ref. No.	Part No.	Description	No. Used
10	224B0620	Screw - Pan	2
11	59031-2106	Coil - Charging	1
12	92037-2158	Clamp	1
13	26011-2312	Wire - Lead	1
14	92170-2029	Clamp	1
15	92071-2099	Grommet	1
16	234B0408	Screw - Pan	1
17	21130-2060	Cap - Spark Plug	1
18	92070-2101	Plug - Spark, RCJ8	1

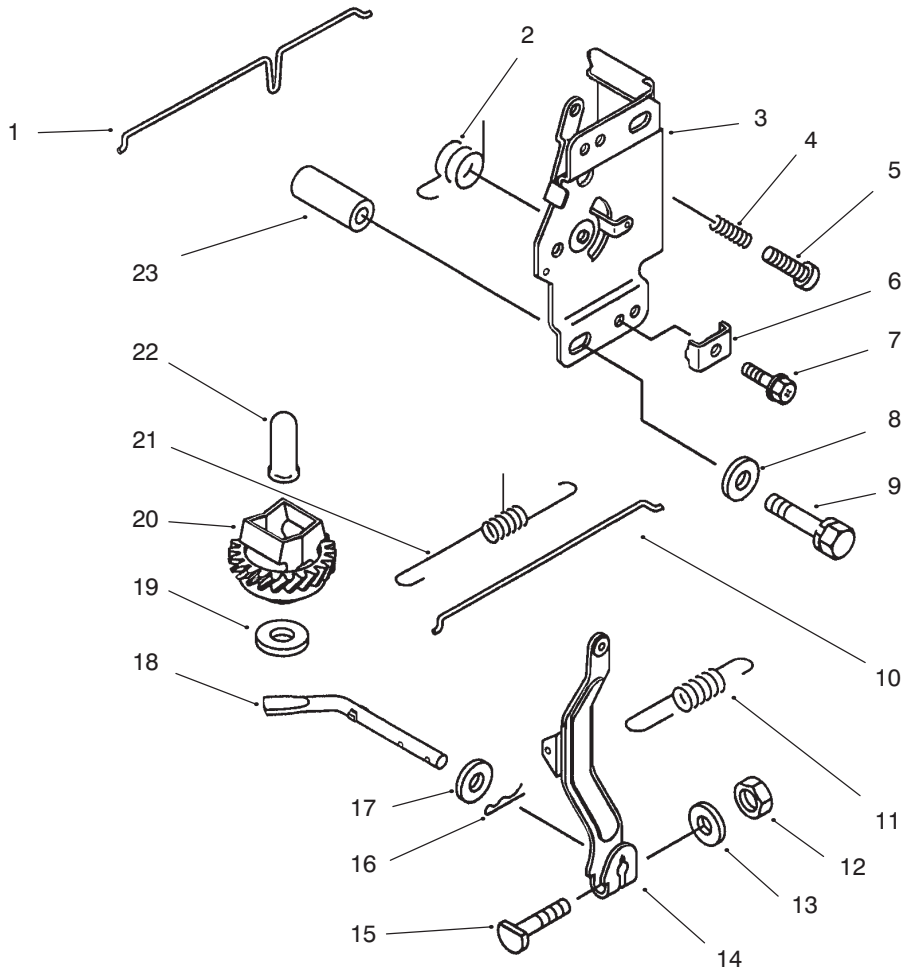


STARTER

Ref. No.	Part No.	Description	No. Used
1	92081-2267	Spring - Recoil	1
2	32099-2060	Case - Spring	1
3	32099-2239	Case - Recoil Starter	1
4	130B0610	Bolt - Flanged	4
5	59106-2060	Rope - 6 x 1380	1
6	46075-2059	Grip - Recoil Starter	1
7	92022-2248	Washer	1
8	59101-2054	Reel - Recoil Starter	1
9	92081-2021	Spring	3

Ref. No.	Part No.	Description	No. Used
10	92081-2268	Spring - Return	1
11	13165-2073	Pawl - Recoil Starter	3
12	14020-2054	Retainer - Recoil Starter	1
13	92001-2027	Bolt	1
14	49080-2144	Pulley - Starting	1
15	120P0620	Bolt - Socket	3
*	49088-2412	Starter - Recoil (Incl. Ref. #1-5 & 8-14)	1

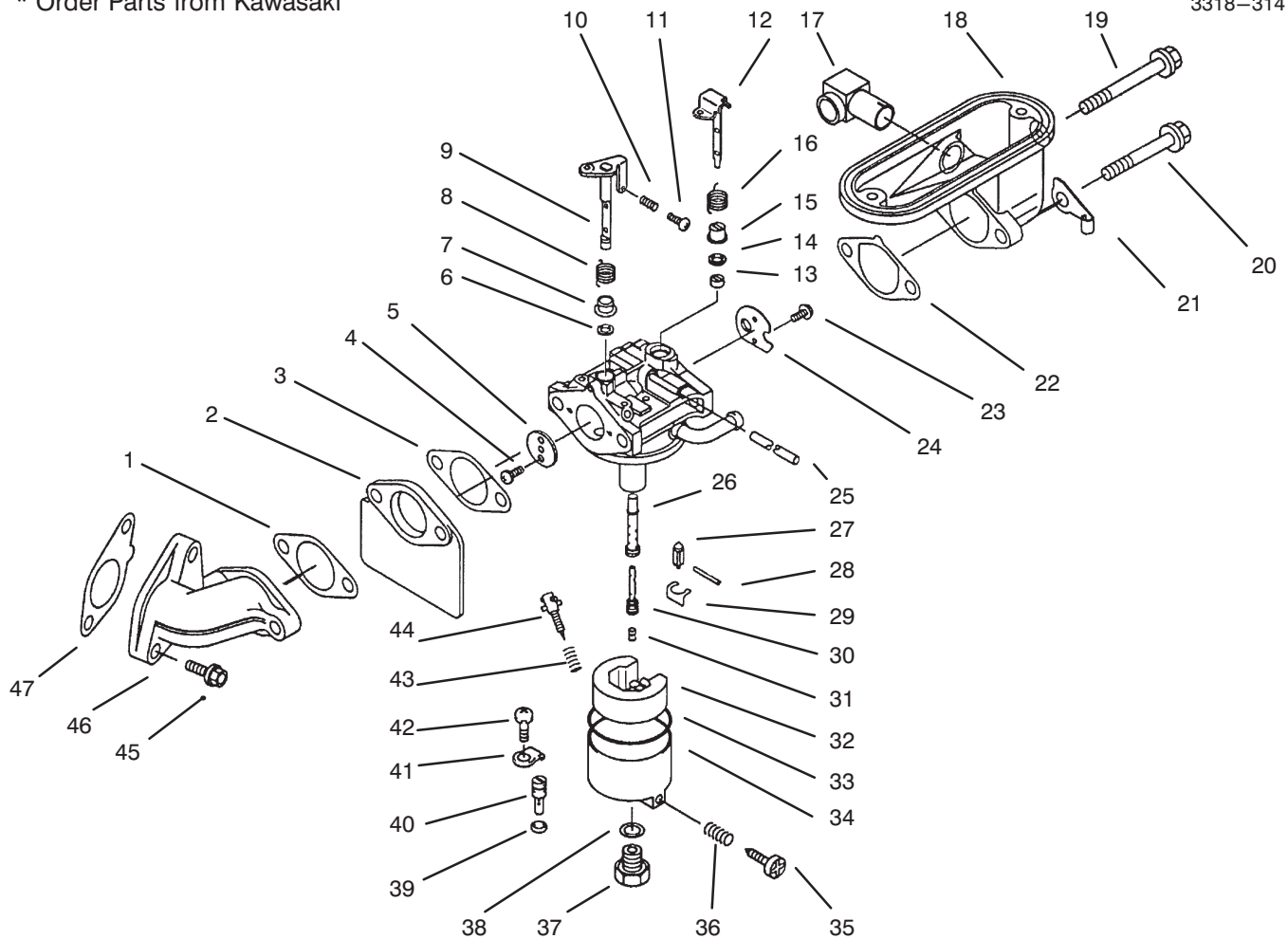
*Not Illustrated



CONTROL EQUIPMENT

Ref. No.	Part No.	Description	No. Used
1	16169-2074	Link - Choke	1
2	92081-2316	Spring	1
3	49113-2067	Panel - Comp. Control (Incl. Ref. # 2, & 4-7)	1
4	92144-2266	Spring	1
5	214B0425	Screw - Pan	1
6	92037-2020	Clamp	1
7	92150-2182	Bolt - 5 x 8	1
8	92200-2070	Washer	2
9	180B0650	Bolt - Upset-Ws	2
10	16171-2001	Link	1
11	39129-2010	Spring - Governor	1

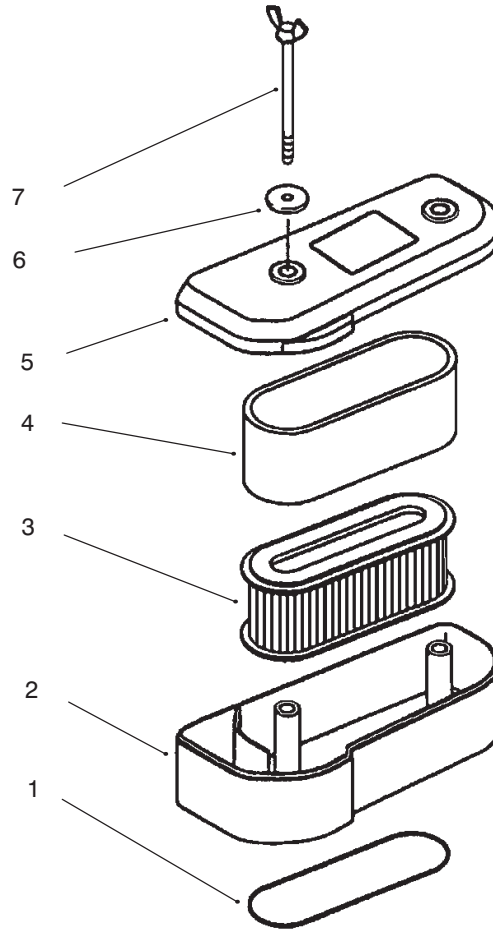
Ref. No.	Part No.	Description	No. Used
12	311B0600	Nut - Hex	1
13	411B0600	Washer - Plain	1
14	21187-2052	Arm - Assembly	1
15	92002-2269	Bolt	1
16	554A0600	Pin - Snap	1
17	92200-2029	Washer	1
18	39003-2072	Arm - Pivot	1
19	92200-2036	Washer	1
20	49110-2067	Governor - Assembly	1
21	92081-2313	Spring	1
22	42036-2060	Sleeve	1
23	92027-2071	Collar	2



CARBURETOR

Ref. No.	Part No.	Description	No. Used
1	11060-2338	Gasket - Intake Pipe	1
2	16073-2091	Insulator	1
3	11060-2339	Gasket - Carburetor	2
4	92009-2080	Screw	2
5	16025-2114	Valve - Throttle, #140	1
6	92093-2002	Seal	1
7	92027-2025	Collar	1
8	92081-2077	Spring	1
9	16041-2009	Shaft - Throttle	1
10	92081-2046	Spring	1
11	92009-2079	Screw	1
12	16041-2010	Shaft - Choke	1
13	92027-2003	Collar	1
14	92093-2069	Seal	1
15	92143-2142	Collar	1
16	92144-2160	Spring	1
17	59071-2062	Joint	1
18	16060-2108	Pipe - Intake	1
19	92002-2254	Bolt - 8 x 110	1
20	92002-2253	Bolt - 8 x 92	1
21	92170-2019	Clamp	1
22	11009-2025	Gasket	1
23	92009-2081	Screw	2
24	16126-2105	Valve - Choke	1
25	92059-2266	Tube - 3 x 5 x 110	1
26	49121-2077	Nozzle - Main	1

Ref. No.	Part No.	Description	No. Used
27	16030-2073	Valve - Float	1
28	92043-2006	Pin	1
29	92033-2067	Ring - Snap	1
30	49123-2058	Holder - Main Jet	1
31	92063-2010	Jet - Main	1
32	16031-2066	Float	1
33	11009-2024	Gasket	1
34	16020-2094	Chamber - Float (Incl. Ref. #35, 36)	1
35	92009-2015	Screw	1
36	92081-2009	Spring	1
37	92002-2009	Bolt	1
38	11009A-2025	Gasket	1
39	16038-024	Gasket	1
40	92064-2062	Jet - Pilot, # 60	1
41	13183-2252	Plate	1
42	92009-2244	Screw	1
43	92081-2008	Spring	1
44	16014-2055	Screw - Pilot Air	1
45	130G0825	Bolt - Flanged	2
46	16060-2109	Pipe - Intake	1
47	11060-2337	Gasket - Intake Pipe	1
*	15003-2183	Carburetor - Assembly (Incl. Ref. # 1-16 & 22-44)	1

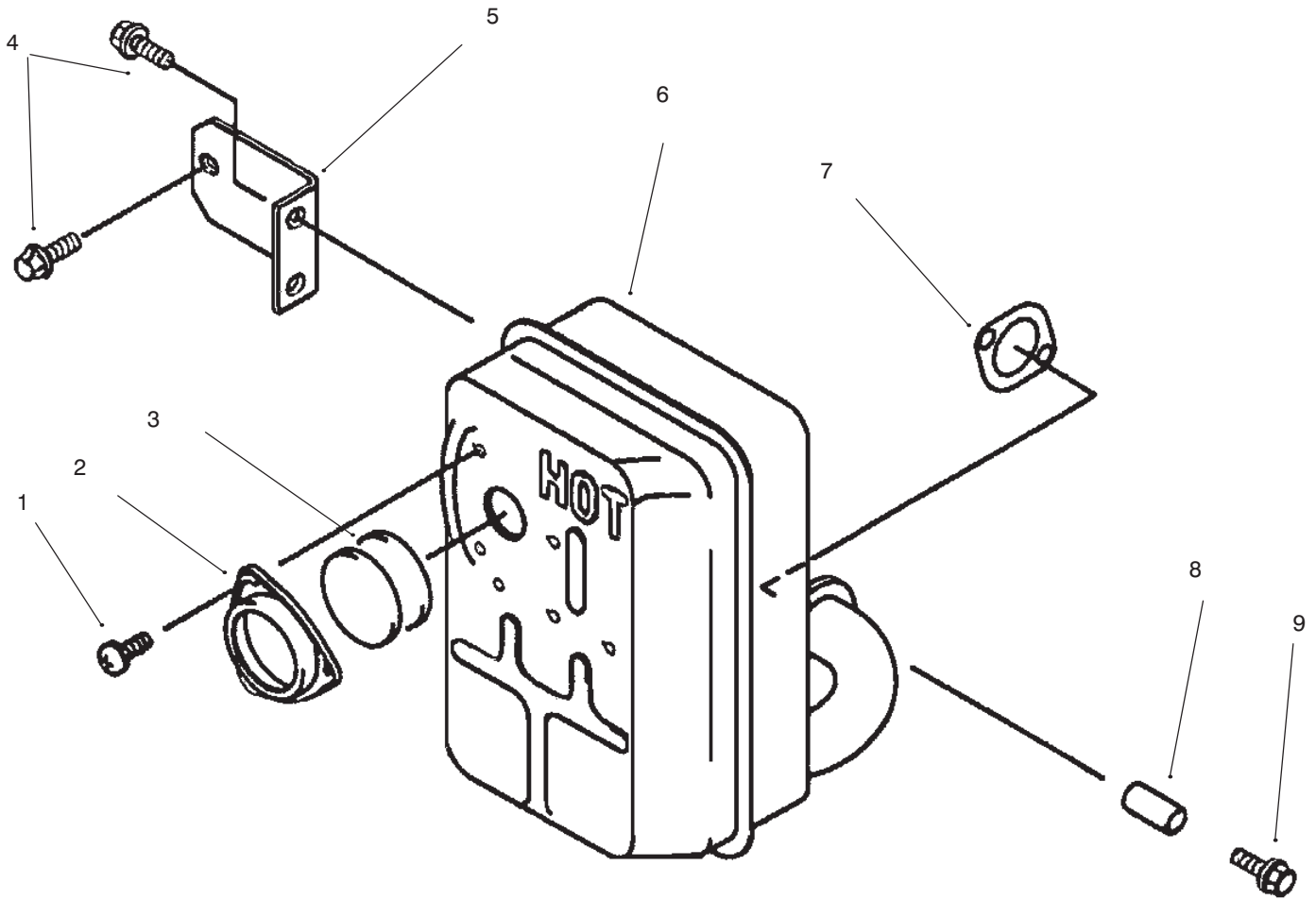


AIR-FILTER

Ref. No.	Part No.	Description	No. Used
1	11009-2443	Gasket - Air Filter	1
2	11011-2174	Case - Air Filter	1
3	11013-2021	Element - Air Filter	1
4	11013-2020	Element - Air Filter	1
5	11012-2192	Cap - Air Filter	1

Ref. No.	Part No.	Description	No. Used
6	92022-2220	Washer	2
7	92002-2230	Bolt	2
*	11010-2291	Filter Assembly (Incl. Ref. # 2-6)	1

*Not Illustrated



MUFFLER

Ref. No.	Part No.	Description	No. Used
1	92009-2166	Screw - 5 x 8	2
2	11012-2165-9Y	Cap - Spark Arrester	1
3	18077-2052	Arrester - Spark	2
4	130G0812	Bolt - Flanged	4
5	11044-2069-9Y	Bracket	1

Ref. No.	Part No.	Description	No. Used
6	49069-2190-9Y	Muffer Assembly (Incl. Ref. #1-3)	1
7	11009-2527	Gasket - Muffer	1
8	92027-2081	Collar	2
9	130G0845	Bolt - Flanged	2

*Not Illustrated

TORO PART NUMBER INDEX (Cont.)

Part No.	Description	Pg. No.	Ref. No.	Qty.	Part No.	Description	Pg. No.	Ref. No.	Qty.
7-5461	Spacer	5	5	1	71-3040	Replacement Axle Kit	2	*	1
10-8110	Washer - Flat	5	29	A/R	72-2190	Mount - Shift Lever	5	4	1
16-7509	Lever - Idler	1	25	1	74-0040	Spacer - Pivot Idler	1	19	4
26-9670	Belt - Traction	5	39	1	74-0050	Sheave - Lower Half	3	5	1
27-6230	Bolt - Wheel	1	23	1	74-0060	Sheave - Upper Half	3	6	1
29-5560	Switch - Off/On	6	27	1	74-0220	Idler - Bracket L.H.	1	8	1
37-7600	Bridge - Rectifier	6	34	1	74-0230	Idler - Bracket R.H.	1	*	2
44-8160	Washer - Clutch	3	21	1	74-0320	Lever - Shift	5	9	1
44-8310	Ring - Retaining	4	3	2	74-0360	Frame - Rear	2	34	1
44-8320	Spring	4	10	3	74-0380	Control - Pivot	6	24	1
44-8330	Spacer - Pulley Bearing	4	6	1	74-0470	Rod - Pivot	6	21	1
44-8340	Collar - Bearing	4	7	1	74-0480	Pulley - Drive	5	17	2
44-8360	Field Coil, Rotor & Bearing	4	4	1	74-0490	Decal - Fuel Shut Off	2	33	1
47-1970	Grip - Engagement	5	8	1	74-0510	Valve - Fuel	2	35	1
47-2982	Hose - Fuel	1	3	1	74-0521	Fitting - Rod	1	10	2
47-2982	Hose - Gas	3	12	1	74-0610	Transmission	5	3	1
51-4160	Pulley - Wheel	5	30	4	74-0720	Tube - Manual	6	2	1
51-4170	Spacer - Pulley	5	31	8	74-0740	Control - Throttle	6	19	1
51-4180	Drum - Brake	5	32	2	82-2180	Panel - Control	6	3	1
51-4190	Pulley - Driven	5	40	1	82-2190	Switch - Bail	6	35	1
51-4220	Guard - Coupler	5	43	2	82-2240	Wire Harness	7	1	1
51-4230	Washer - Wheel	5	37	2	82-2280	Decal - Reverse Handle	6	26	1
51-4240	Shaft - Extension R.H.	5	14	1	82-2290	Decal - Control Bar	6	12	1
51-4250	Shaft - Extension L.H.	5	*	1	82-2300	Switch - Clutch	6	20	1
51-4260	Coupler	5	45	2	82-3820	Boot - Switch	6	17	1
51-4270	Bearing - Shaft Extension	5	12	2	82-7631	Rod - Control	6	5	2
51-4290	Belt - Drive	5	18	2	82-7680	Bail Assembly	6	11	1
51-4370	Spring - Torsion R.H.	1	*	1	82-7690	Bar - Control	6	15	1
51-4380	Spring - Torsion L.H.	1	17	1	82-7730	Decal - Proline	6	4	1
51-4450	Screw - Leveler	1	18	2	82-7750	Decal - Ground Speed	2	32	1
51-4480	Idler - Wheel	1	15	2	82-8440	Tank - Fuel	2	37	1
51-4490	Spacer - Idler Wheel	1	16	2	86-7910	Module - Interlock	7	2	1
51-4540	Retainer - Clutch	3	8	1	86-7910	Module - Interlock	6	40	1
51-4580	Rod - Brake	5	19	2	92-1746	Bearing	5	27	4
51-4600	Brake Arm R.H.	5	*	1	92-5436	Key	3	7	1
51-4610	Brake Arm L.H.	5	20	1	93-1156	Frame	1	28	1
51-4650	Link - Brake	5	22	2	218-461	Nut	6	18	1
51-4660	Plate - Brake - Link	5	35	2	218-595	Connector - Body	6	44	1
51-4700	Brake Band Assembly	5	33	2	231-117	Tire	5	23	2
51-4850	Lever - Parking Brake	6	6	1	232-27	Valve Stem	5	25	2
52-2010	Decal - Parking Brake	6	7	1	237-7	ORing	2	36	1
52-2890	Bushing	2	38	2	237-124	Grommet	1	21	1
54-0230	Field Assembly	4	1	1	237-141	Grommet - Rubber	6	8	2
54-3200	Clutch Brake Assembly	3	4	1	242-80	Rim	5	24	2
55-3570	Cap - Fuel Tank	1	1	1	2412-98	Clamp - Fuel Line	3	11	2
55-7410	Armature & Pulley Assembly	4	5	1	2412-98	Clamp - Fuel line	1	2	1
56-6360	Fuel - Filter	3	10	1	2412-108	Clamp - Hose	3	22	1
57-5811	Panel - Bottom	6	28	1	2412-120	R-Clamp	6	36	2
57-6360	Screw - Hex. Hd.	3	19	1	251-291	Bearing - Pulley	4	8	1
57-6370	Screw - Hex. Hd.	3	15	1	251-292	Bearing - Field	4	2	1
57-6380	Screw - Hex. Hd.	3	18	3	256-155	Bushing	1	24	2
57-6390	Nut	3	13	2	283-6	Pin - Clevis	1	9	4
62-4540	Pulley - Idler	1	26	1	302-5	Fitting - Grease	5	44	2
63-7590	Relay	7	3	1	302-11	Grease Fitting	5	28	2
63-7590	Relay	6	41	1	321-2	Screw - Hex. Hd.	6	42	2
63-8360	Key	6	16	2	321-4	Screw - Hex. Hd.	5	13	4
65-3090	Decal - Instruction	6	38	1	322-2	Screw - Hex. Hd.	5	1	4
66-7400	Plate - Control	2	31	1	322-4	Screw - Hex. Hd.	1	29	4
67-6370	Bracket - Support R.H.	1	*	1	322-7	Screw - Hex. Hd.	5	34	8
67-6380	Bracket - Support L.H.	1	11	1	323-6	Screw - Hex. Hd.	1	13	6
67-6440	Handle - Upper	6	1	1	323-8	Screw - Hex Hd. Cap	1	27	1
68-2190	Spring - Extension	1	22	1	323-16	Screw - Hex. Hd.	1	12	2
68-9690	Fitting - Rod	1	6	2	329-10	Screw - Hex. Hd.	5	7	1
71-1280	Decal - Danger	6	39	1	3234-11	Screw - Hex. Hd.	6	31	4

*Not Illustrated

TORO PART NUMBER INDEX

3318-314

Part No.	Description	Pg. Ref. No. No. Qty.	Part No.	Description	Pg. Ref. No. No. Qty.
3241-5	Screw - Set	5 38 1	3296-23	Nut - Lock	1 14 2
3245-3	Screw - Set Socket Hd.	5 16 2	3296-39	Nut - Lock	1 20 8
3253-4	Washer - Lock	3 17 3	3296-42	Nut - Hex	6 43 2
3253-4	Washer - Lock	1 30 4	3296-42	Nut - Lock	5 10 4
3253-4	Washer - Lock	5 2 12	32103-25	Nut - Wing	1 4 2
3254-5	Washer - Lock	6 25 1	32105-1	Screw - Hex. Hd. Machine	6 14 1
3255-8	Washer - External Tooth	3 14 1	32105-13	Screw - Machine	6 29 1
3256-23	Washer - Flat	1 5 10	32105-14	Screw - Hex. Hd. Machine	6 23 4
3256-23	Washer - Flat	3 16 3	32120-64	Ring - Retaining	5 11 3
3257-5	Key - Woodruff	5 15 3	32128-21	Nut - Hex. Flange	6 32 4
3290-307	Pin - Cotter	1 7 4	32144-19	Screw - Self Tapping	6 37 4
3290-307	Pin - Cotter	6 13 2	32151-40	Ring - Retaining	5 21 2
3290-307	Pin - Cotter	5 42 2	32151-56	Ring - Retaining	5 41 2
3290-378	Cable Tie	6 30 2	32151-72	Ring - Retaining	5 36 4
3296-2	Nut - Lock	6 10 6	32151-80	Ring - Push On	6 22 2
3296-5	Nut - Lock	4 9 3	32151-91	Ring - Retaining	5 26 2
3296-6	Nut - Lock	2 39 1			

TABLE OF CONTENTS

Description	Page	Description	Page
Frame Assembly	1	Air Cleaner Assembly	17
Engine And Clutch Assembly	3	Muffler Assembly	18
Clutch Assembly No. 54-3200	4	Engine Kawasaki Model FB460V Type JS08	
Axle Assembly	5	Crankcase	19
Handle Assembly	6	Piston / Crankshaft	20
Electrical Schematic	7	Valve / Camshaft	21
Peerless Transmission Model No. 700-039	8	Lubrication / Equipment	22
Engine Kawasaki Model FB460V Type DS08		Cooling / Equipment	23
Engine Assembly	9	Electrical / Equipment	24
Crankcase Assembly	10	Starter	25
Governor Assembly	12	Control / Equipment	26
Recoil & Flywheel Assembly	13	Carburetor	27
Recoil Assembly	14	Air Filter	28
Air Cleaner & Carburetor Assembly	15	Muffler	29
Carburetor Assembly	16	Numerical Parts Index	30

Optional Equipment

Description	Model Or Part No.	Description	Model Or Part No.
36" Cutting Unit	Model 30136	37" Deck (Cloth Bag) Bag Kit	Model 30129
37" Recycler Deck	Model 30137	37" Deck (Steel Hopper) Bag Kit	Model 30130
44" Cutting Unit	Model 30144	44/52" Deck Bag Kit	Model 30128
48" Recycler Deck	Model 30148	2-5" HOC Kit	Part 84-5010
52" Cutting Unit	Model 30152	Front Weight Kit-36/37 Deck	Part 80-3350
62" Cutting Unit	Model 30162	Standard Sulky	Model 30122
36" Deck Bag Kit	Model 30125	Steerable Sulky	Model 30123

*Not Illustrated

