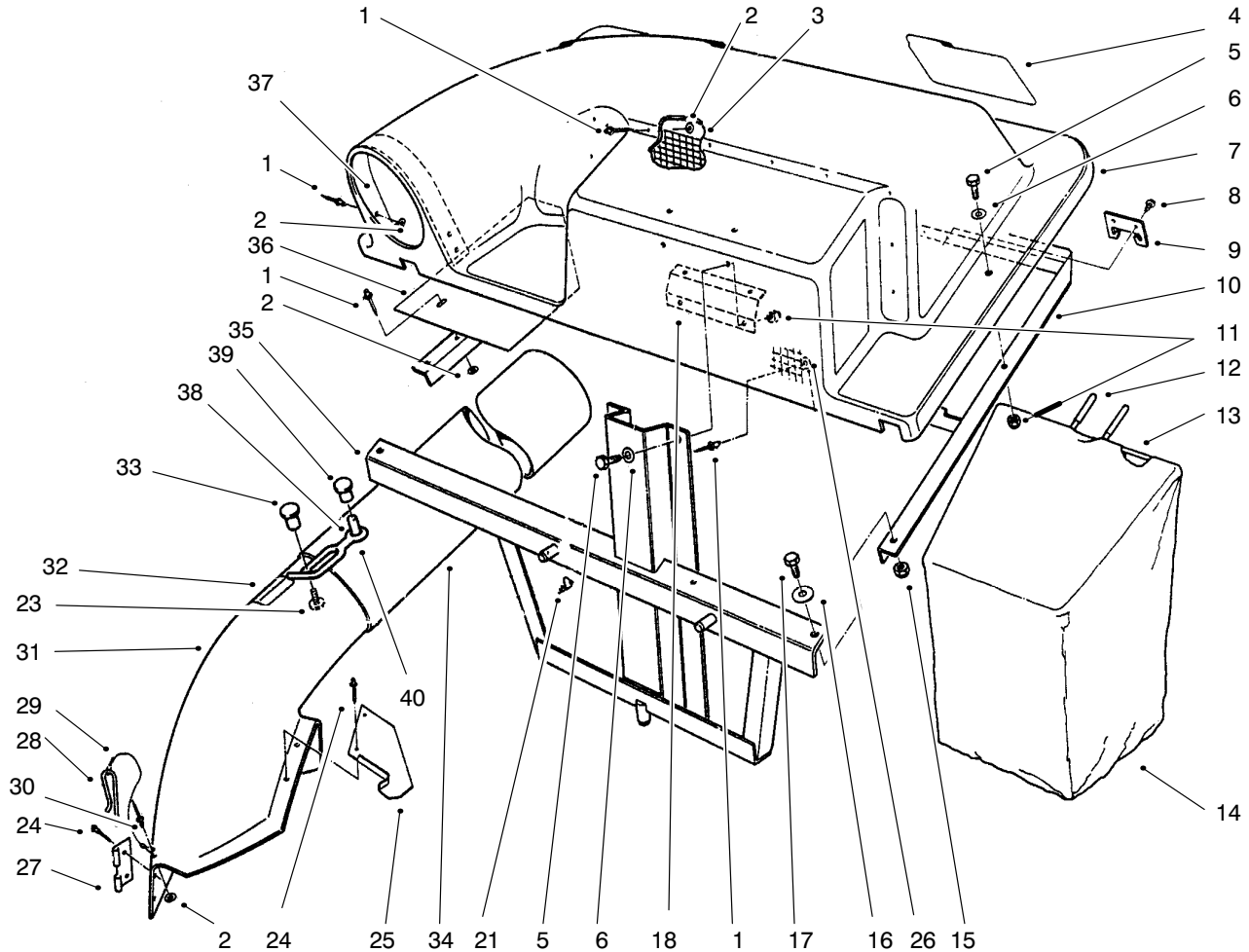


TWIN BAGGER GRASS CATCHER

FOR REAR ENGINE RIDERS AND LAWN TRACTORS WITH 32" DECKS

MODEL NO. 79086-6900001-7900001 & UP

**PARTS
CATALOG**

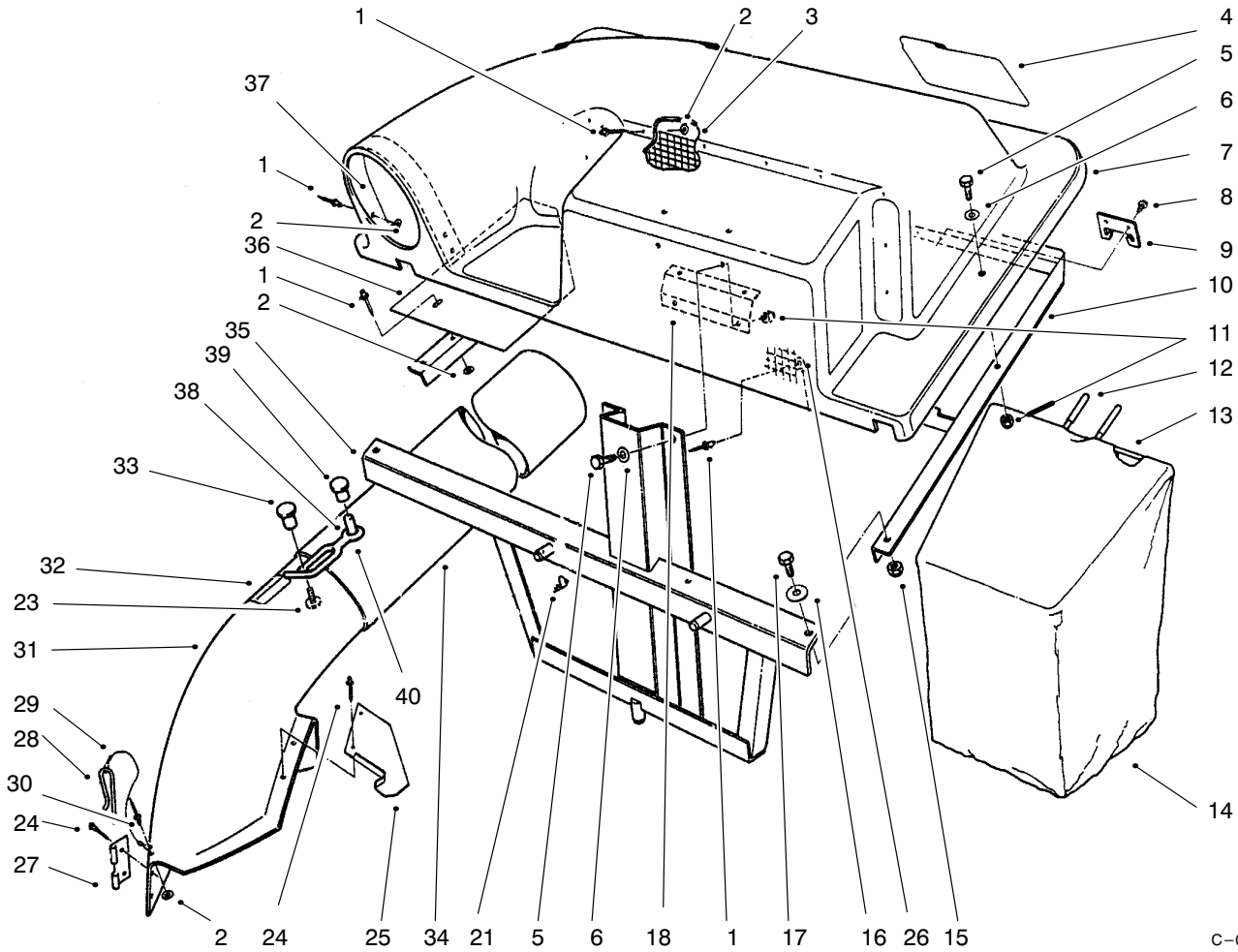


C-0452B

GRASS CATCHER ASSEMBLY

Ref. No.	Part No.	Description	No. Used
1	3269-4	Rivet - Pop	22
2	3256-49	Washer - Flat	23
3	61-9890	Screen	1
4	62-3640	Decal	1
5	322-5	Screw - Cap Hex. Hd.	8
6	3256-23	Washer - Flat	8
7	61-9790	Cover	1
8	32144-4	Screw - Flange, Hex. Hd.	4
9	61-9860	Bracket - Frame, Bag	2
10	61-9810	Cover - Frame W.A.	1
11	3296-29	Nut - Lock	8
12	47-2550	Grip - Handle, Bag	4

Ref. No.	Part No.	Description	No. Used
13	47-2620	Frame - Bag	2
14	47-2570	Bag - Twin Bagger	2
15	3296-39	Nut - Lock	2
16	3256-24	Washer - Flat	2
17	323-6	Screw - Cap Hex. Hd.	2
18	61-9880	Plate - Backup	1
21	3290-355	Pin - Cotter, Hair	2
23	32144-112	Screw	1
24	3290-412	Rivet - Pop	4
25	33-2090	Bracket - Support, Chute	1
27	28-8050	Bracket - Mount, Chute	1



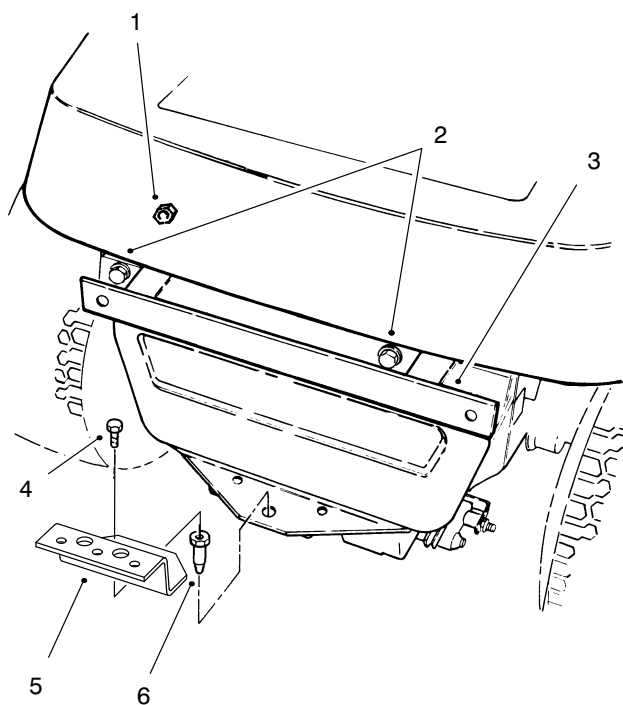
C-0452B

GRASS CATCHER ASSEMBLY

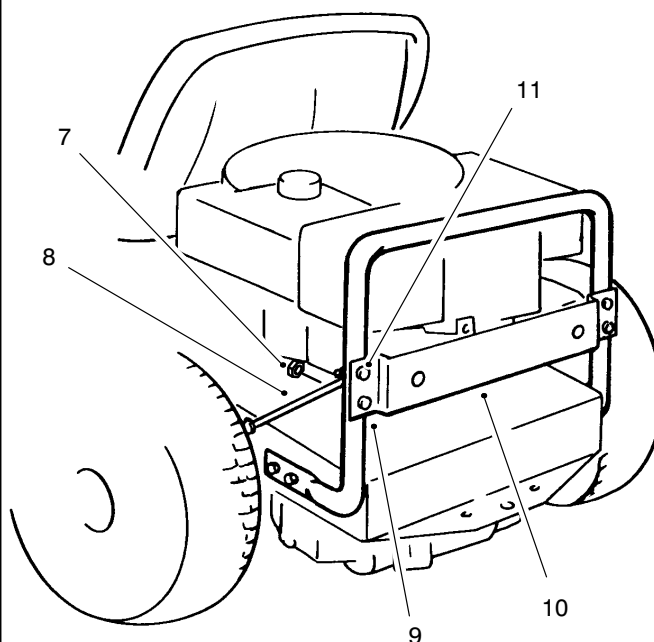
Ref. No.	Part No.	Description	No. Used
28	28-8130	Pin - Locking, Chute	1
29	28-8070	Cable	1
30	3290-282	Rivet - Pop	1
31	28-8060	Assembly - Chute (Incl. Ref. #23-30 & 32-33)	1
32	93-1122	Decal - Instruction	1
33	233-68	Knob	1
34	68-3044	Tube - Grass Discharge	1
35	61-9900	Mount - Frame W.A.	1

Ref. No.	Part No.	Description	No. Used
36	61-9870	Baffle	1
37	62-6890	Support - Inlet	1
38	22-9741	Spacer	1
39	3290-479	Fastener - Panel	1
40	82-5690	Retainer - Duct	1
*	33-4750	Hi-Sail Bagging Blade (Optional)	1
*	12-7049	Loose Parts	1

*Not Illustrated

FRONT ENGINE

827

REAR ENGINE

826

MOUNTING HARDWARE

Ref. No.	Part No.	Description	No. Used
1	3296-29	Nut	2
2	322-5	Capscrew	2
3	94-1976	Bracket - Channel	1
4	322-3	Capscrew	1
5	94-1975	Bracket - Bagger Mounting	1
6	25-1530	Pin - Mounting, Lower	1

Ref. No.	Part No.	Description	No. Used
7	3296-29	Nut	4
8	88-9760	Brace - Bagging	1
9	322-7	Capscrew	3
10	88-9770	Plate - Bagging Kit	1
11	322-9	Capscrew	1

TORO PART NUMBER INDEX

Part No.	Description	Pg. No.	Ref. No.	Qty.	Part No.	Description	Pg. No.	Ref. No.	Qty.
12-7049	Loose Parts	2	*	1	93-1122	Decal - Instruction	2	32	1
22-9741	Spacer	2	38	1	94-1975	Bracket - Bagger Mounting	3	5	1
25-1530	Pin - Mounting, Lower	3	6	1	94-1976	Bracket - Channel	3	3	1
28-8050	Bracket - Mount, Chute	1	27	1	233-68	Knob	2	33	1
28-8060	Assembly - Chute	2	31	1	322-3	Capscrew	3	4	1
28-8070	Cable	2	29	1	322-5	Capscrew	3	2	2
28-8130	Pin - Locking, Chute	2	28	1	322-5	Screw - Cap Hex. Hd.	1	5	8
33-2090	Bracket - Support, Chute	1	25	1	322-7	Capscrew	3	9	3
33-4750	Hi-Sail Bagging Blade	2	*	1	322-9	Capscrew	3	11	1
47-2550	Grip - Handle, Bag	1	12	4	323-6	Screw - Cap Hex. Hd.	1	17	2
47-2570	Bag - Twin Bagger	1	14	2	3256-23	Washer - Flat	1	6	8
47-2620	Frame - Bag	1	13	2	3256-24	Washer - Flat	1	16	2
61-9790	Cover	1	7	1	3256-49	Washer - Flat	1	2	23
61-9810	Cover - Frame W.A.	1	10	1	3269-4	Rivet - Pop	1	1	22
61-9860	Bracket - Frame, Bag	1	9	2	3290-282	Rivet - Pop	2	30	1
61-9870	Baffle	2	36	1	3290-355	Pin - Cotter, Hair	1	21	2
61-9880	Plate - Backup	1	18	1	3290-412	Rivet - Pop	1	24	4
61-9890	Screen	1	3	1	3290-479	Fastener - Panel	2	39	1
61-9900	Mount - Frame W.A.	2	35	1	3296-29	Nut	3	1	2
62-3640	Decal	1	4	1	3296-29	Nut	3	7	4
62-6890	Support - Inlet	2	37	1	3296-29	Nut - Lock	1	11	8
68-3044	Tube - Grass Discharge	2	34	1	3296-39	Nut - Lock	1	15	2
82-5690	Retainer - Duct	2	40	1	32144-4	Screw - Flange, Hex. Hd.	1	8	4
88-9760	Brace - Bagging	3	8	1	32144-112	Screw	1	23	1
88-9770	Plate - Bagging Kit	3	10	1					