



Fuel Pump Relocation Kit

Greensmaster® 3150 2-Wheel Drive Traction Unit

Model No. 119-4121

Model No. 119-4123

Installation Instructions

Loose Parts

Use the chart below to verify that all parts have been shipped.

Description	Qty.	Use
Fuel pump (for kit 119-4123 only)	1	Install the New Fuel Pump
Pump mounting bracket	1	
Flange screw	2	
Hose (15 inches)	1	
Hose (23 inches)	1	
Hose (42 inches)	1	

Installing the New Fuel Pump

⚠ DANGER

In certain conditions, gasoline is extremely flammable and highly explosive. A fire or explosion from gasoline can burn you and others and can damage property.

- Never smoke when handling gasoline, and stay away from an open flame or where gasoline fumes may be ignited by a spark.
- Perform this procedure when the engine is cold and in a well ventilated area.
- Wipe up any gasoline that spills.

⚠ WARNING

Gasoline is harmful or fatal if swallowed. Long-term exposure to vapors can cause serious injury and illness.

- Avoid prolonged breathing of vapors.
- Keep face away from nozzle and gas tank or conditioner opening.
- Keep gas away from eyes and skin.

1. Allow the engine to completely cool down.
2. Remove the air cleaner cover and the air cleaner from the engine (Figure 1).

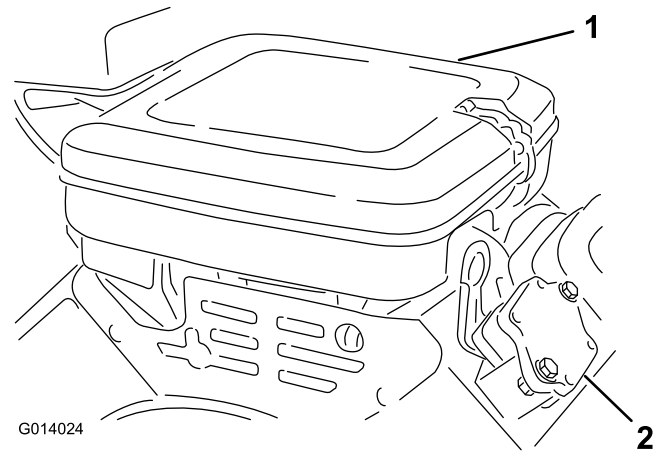


Figure 1

1. Air cleaner cover
2. Old fuel pump location

3. Remove the 5 existing bolts holding the air cleaner body to the carburetor (Figure 2).

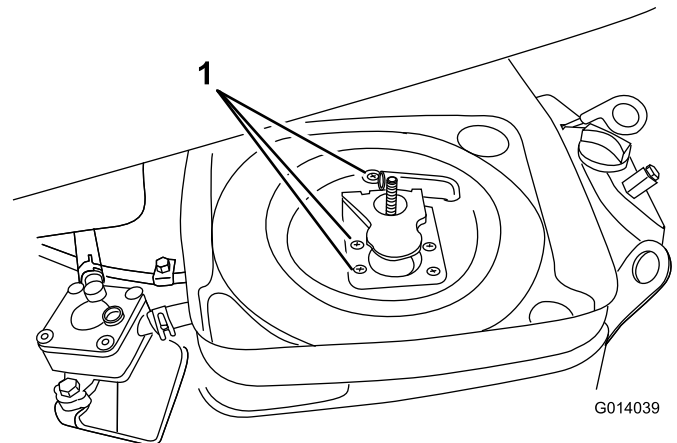


Figure 2

1. Remove existing bolts

4. Remove the two bolts holding the fuel pump to the engine. Install the bolts back into the holes.
5. Remove the two bolts on the other side of the engine. Save these bolts
6. Install the new bracket with the 2 new bolts (Figure 3).
7. Flip the fuel pump over and install the fuel pump to the new bracket with the 2 bolts removed from the engine (Figure 3).

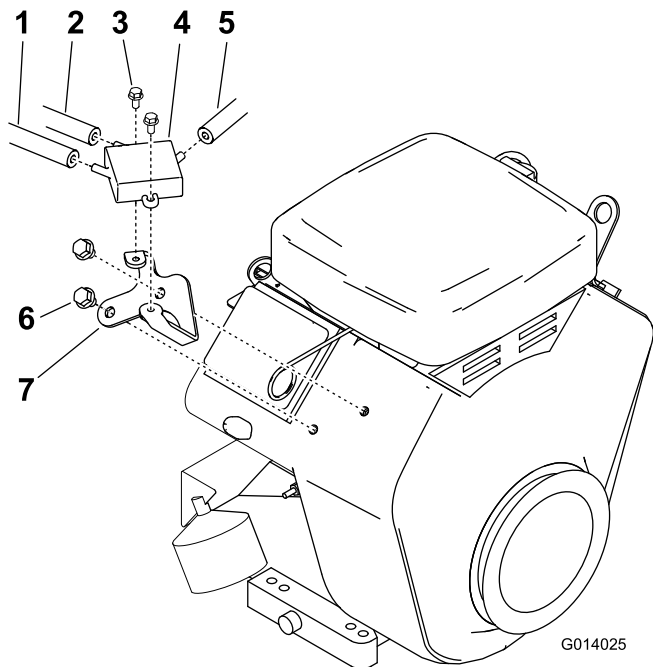


Figure 3

- | | |
|-------------------------------------|-------------------------------|
| 1. Long hose from fuel filter | 5. Short hose from carburetor |
| 2. Medium hose from the valve cover | 6. New bolts |
| 3. Existing bolts | 7. New bracket |
| 4. Fuel pump | |

and to the middle port on the fuel pump (Figure 4). Install the hose clamps.

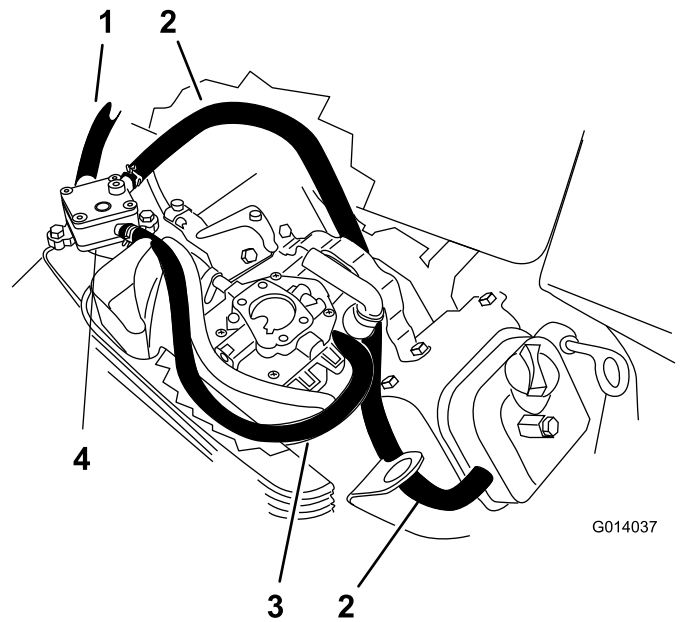


Figure 4

- | | |
|---------------------|----------------------|
| 1. Long fuel hose | 3. Short fuel hose |
| 2. Medium fuel hose | 4. New pump location |

8. Remove one hose at a time. Squeeze and slide the hose clamps down the hose before removing it.
9. Remove the short hose and clamp from the pump and remove it from the carburetor. There is no clamp at the carburetor.
10. Remove the hose clamp from the existing short hose and install it onto the new one.
11. Install the new short hose to the fuel pump where the previous one was removed and is marked OUT on the pump (Figure 4).
12. Connect the short hose to the carburetor.
13. Remove the medium sized hose and clamps from the fuel pump and from the side of the valve cover (Figure 4).
14. Route the new medium sized hose from the side of the valve cover, through the carburetor bracket,

15. Remove the long fuel line and clamp from the fuel filter, which is located on the right side of the machine.
16. Remove the long fuel hose and clamp from the fuel pump (Figure 5).
17. Loosen the R-clamp on the machine and remove the long fuel hose.
18. Route the new long fuel hose from fuel pump, behind the battery hold down clamp, through the R-clamp and to the fuel filter (Figure 5).
19. Install the fuel clamps onto the new long fuel hose.
20. Install the long fuel hose to the pump where the previous one was removed and is marked IN on the pump (Figure 5).
21. Install the long fuel hose to the fuel filter with a clamp.

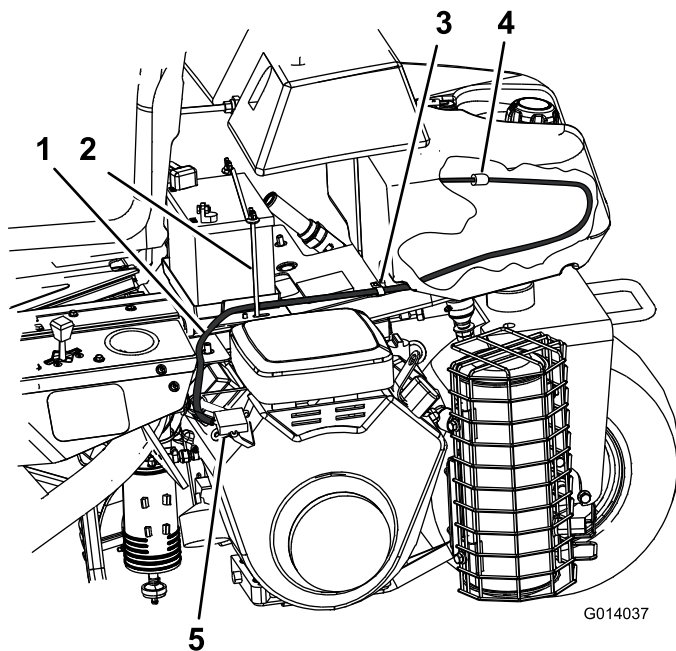


Figure 5

- | | |
|----------------------------|----------------|
| 1. Long fuel hose | 4. Fuel filter |
| 2. Battery hold down clamp | 5. Fuel pump |
| 3. R-clamp | |

-
22. Run the engine briefly and ensure there are no fuel leaks.
 23. Install the air cleaner body with the previously removed bolts.
 24. Install the air cleaner and cover.



Count on it.