



Count on it.

Form No. 3362-139 Rev C

Parts Catalog

Door Kit with Sliding Window **Workman® MD/MDX/MDE Utility Vehicle** **Model No. 07352**

Ordering Replacement Parts

To order replacement parts, please supply the part number, the quantity, and the description of each part desired.

Understanding Reference Numbers

Each identified part in an illustration has a reference number. The reference number for a part also appears in the parts list, along with other information about the part.

This catalog uses two special reference number formats, one to indicate parts in a service assembly and another to indicate the quantity of a given part in an illustration.

Service Assembly Reference Numbers

Parts in service assemblies have reference numbers in the form a:b. The a represents the reference number of the entire service assembly and the b represents a sequential number unique to each part within the service assembly.

For example, a wheel assembly might be identified by reference number 6, the tire by 6:1, the valve by 6:2, and the wheel by 6:3. When you order the assembly identified by reference number 6, you receive all parts identified by reference numbers 6:1, 6:2, and 6:3. However, you may also order any part individually. Reference numbers of this type appear in illustration and in parts lists.

Reference Numbers Indicating Quantity

In an illustration, if a reference number indicates more than one part, the reference number has the form nX y. The n represents the quantity of the part, the X is the multiplication symbol, and the y represents the reference number.

For example, in an illustration, the reference number 2X 37 means that two of the parts identified by reference number 37 are indicated.

List of Abbreviations

AR: as required

ASM: assembly

BBC: blade brake control

BHTF: button head thread forming

CARR: carriage

CCW: counter clockwise

CW: clockwise

DEG: degrees

ECM: electronic control module

EXT: external

FH: flat head

GA: gauge

HD: heavy-duty

HF: hex flange

HH: hex head

HHF: hex head flange

HHFTF: hex head flange thread forming

HJ: hex jam

HLH: hex lag head

HOC: height-of-cut

HSBH: hex socket button head

HSFH: hex socket flat head

HSH: hex socket head

HWH: hex washer head

HWHTF: hex washer head thread forming

HYD: hydraulic

LH: left hand

NI: nylon insert

NPTF: national pipe thread fine

PFH: phillips flat head

PPH: phillips pan head

PPHTF: phillips pan head thread forming

PRH: phillips round head

PTH: phillips truss head

PTO: power-take-off

RH: right hand

ROPS: roll-over protection system

RRB: rear roller brush

SFH: slotted fillister head

SHH: slotted hex head

SHWH: slotted hex washer head

SPH: slotted pan head

SQH: square head

SRH: slotted round head

STD: standard

TAP: self tapping

TTH: torx truss head

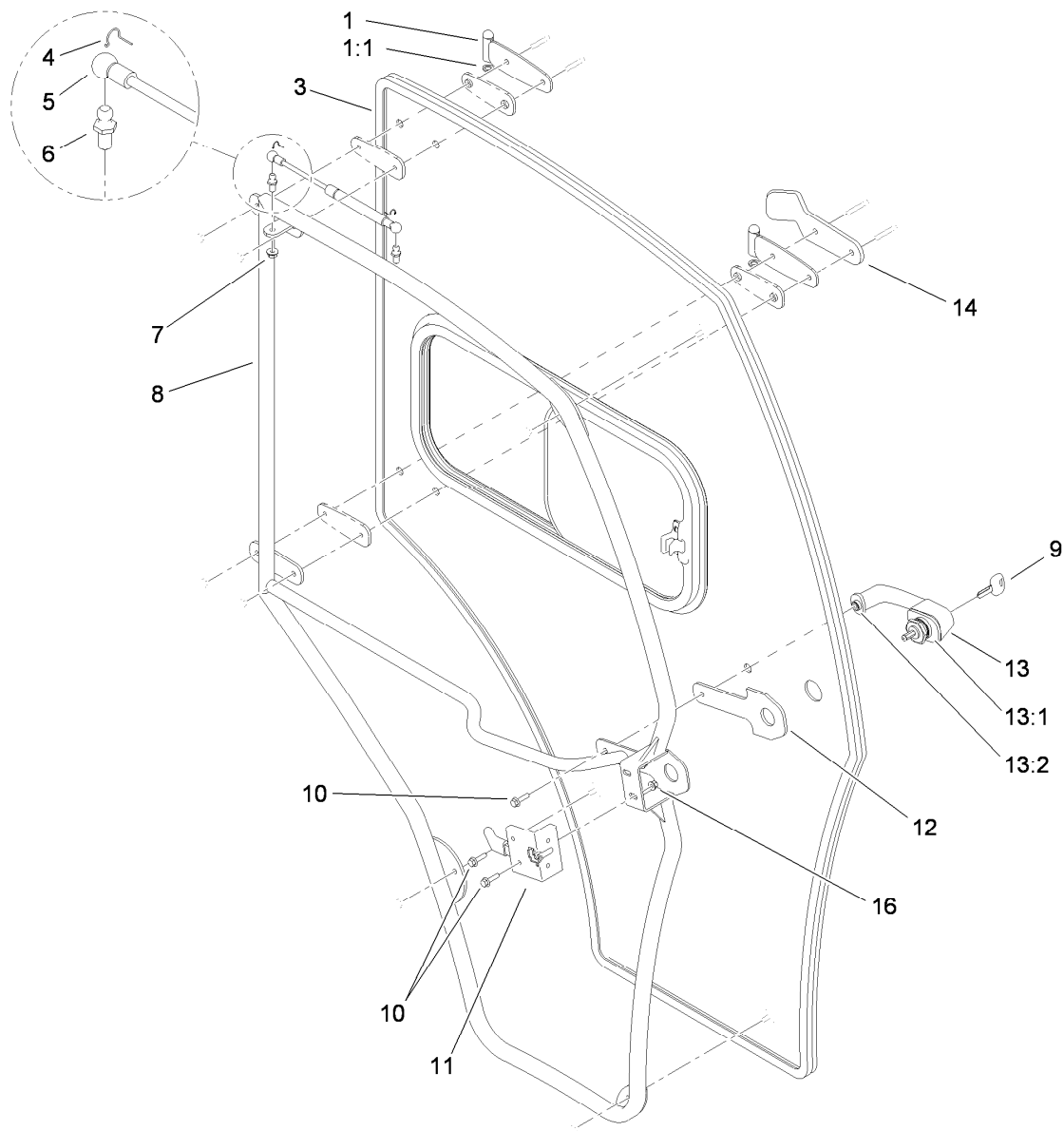
Contents

Left Hand Door Assembly 4

Slider Glass Door Assembly No. 115-7960 5

Right Hand Door Assembly..... 6

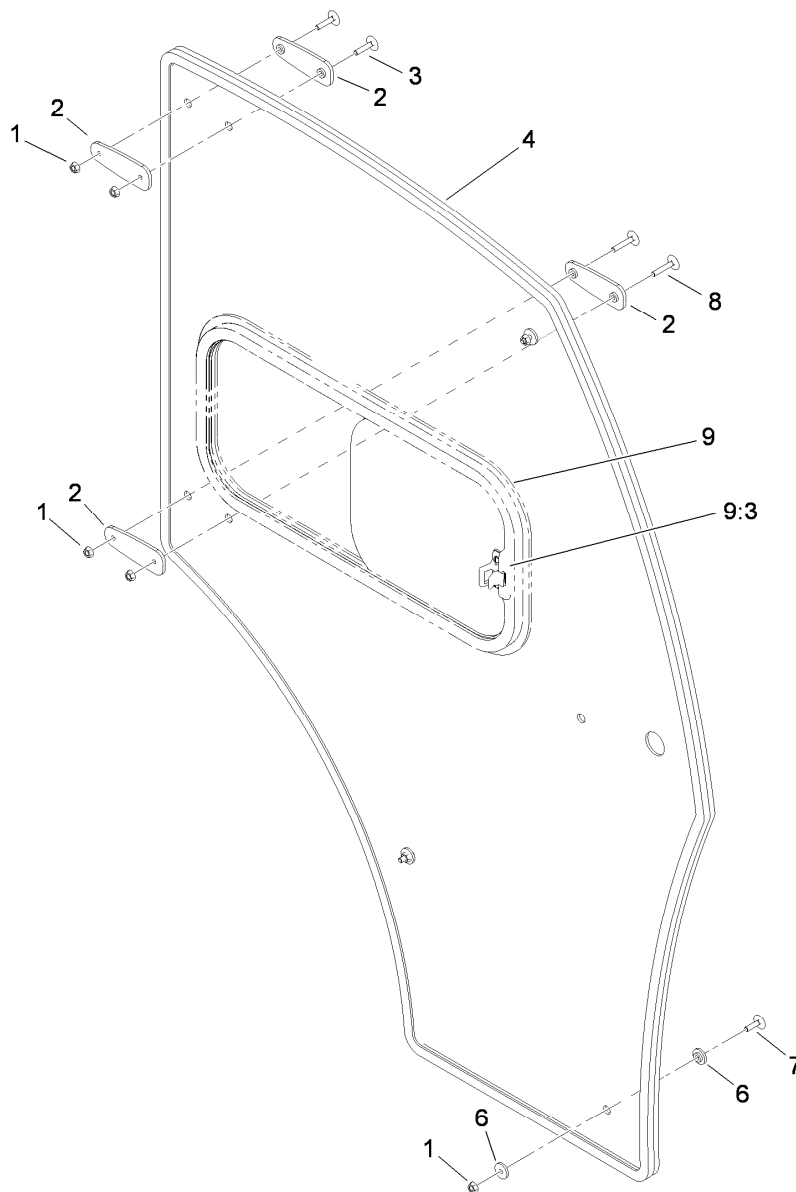
Solid Glass Door Assembly No. 115-7995 7



Left Hand Door Assembly

Ref.	Part Number	Qty.	Description
1	115-7949	2	Hinge-Door, LH
1:1	115-7696	1	Washer-Hinge, Brass
3	115-7960	1	Slider Glass Door ASM
4	115-5591	2	Clip-Shock, Gas
5	115-7997	1	Shock-Door, Gas
6	98-3104	2	Stud-Ball
7	32128-26	1	Nut-Flange
8	115-7963	1	Subframe-Door, LH
9	115-5545	1	Key-Cab

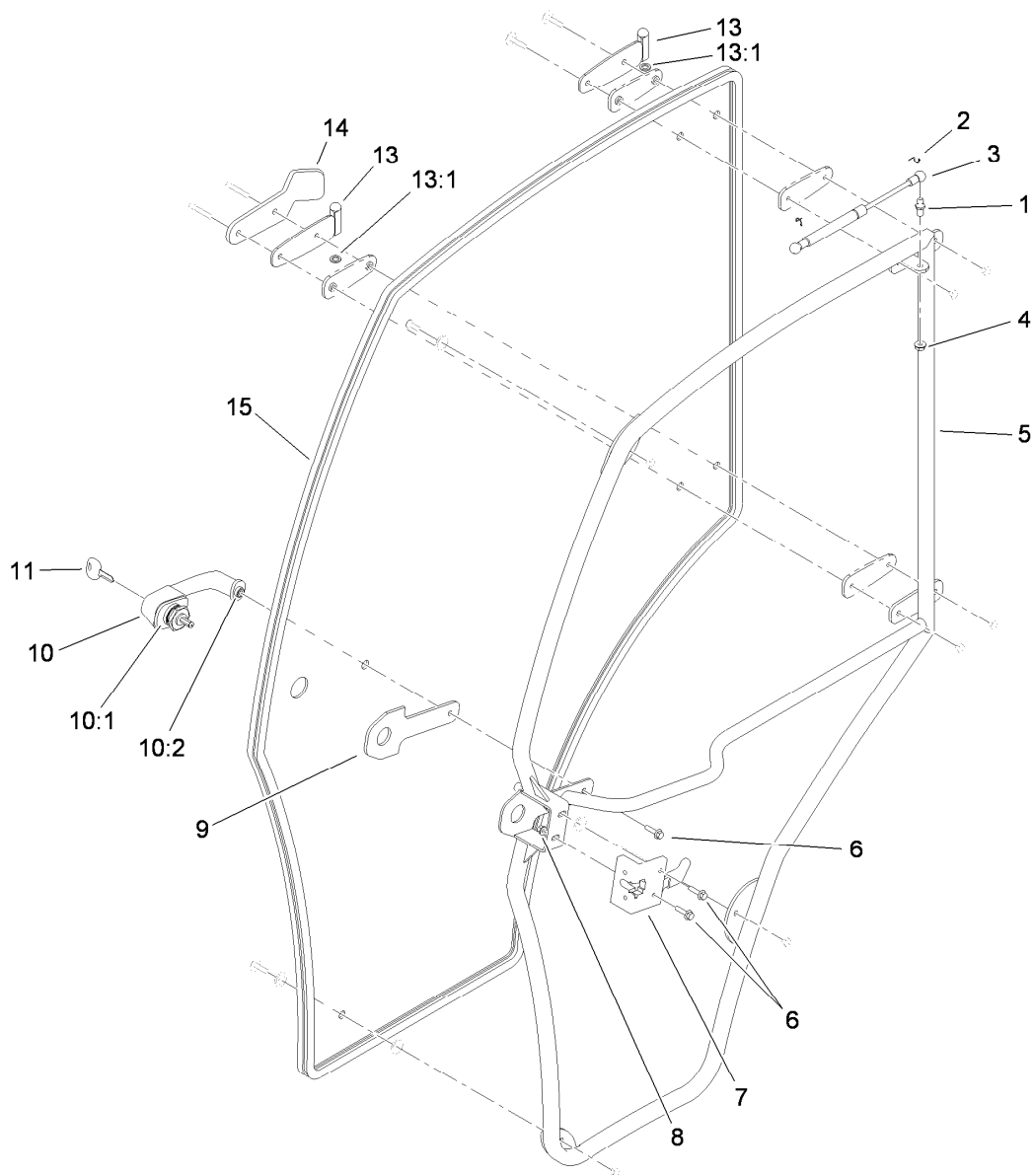
Ref.	Part Number	Qty.	Description
10	33103-025	3	Screw-HHF
11	115-5539	1	LH Rotary Latch ASM
12	115-5546	1	Gasket-Handle
13	115-5544	1	Handle-Button, Push (With Keys)
13:1	119-4514	1	Gasket-Large
13:2	119-4515	1	Gasket-Small
14	115-7999	1	Door-Stop
16	81-0130	2	Nut-Flange, NI



Slider Glass Door Assembly No. 115-7960

Ref.	Part Number	Qty.	Description
1	115-5572	7	Nut-Flange
2	115-7950	4	Bushing-Boxer, Door Hinge
3	115-5571	2	Bolt-Step
4	115-7992	1	Seal-Door, Bulb
6	115-5570	6	Bushing-Thin
7	115-7685	3	Bolt-Step
8	115-7954	2	Bolt-Step
9		1	Sliding Window ASM ●
9:3	115-7970	1	Latch-Window, Sliding

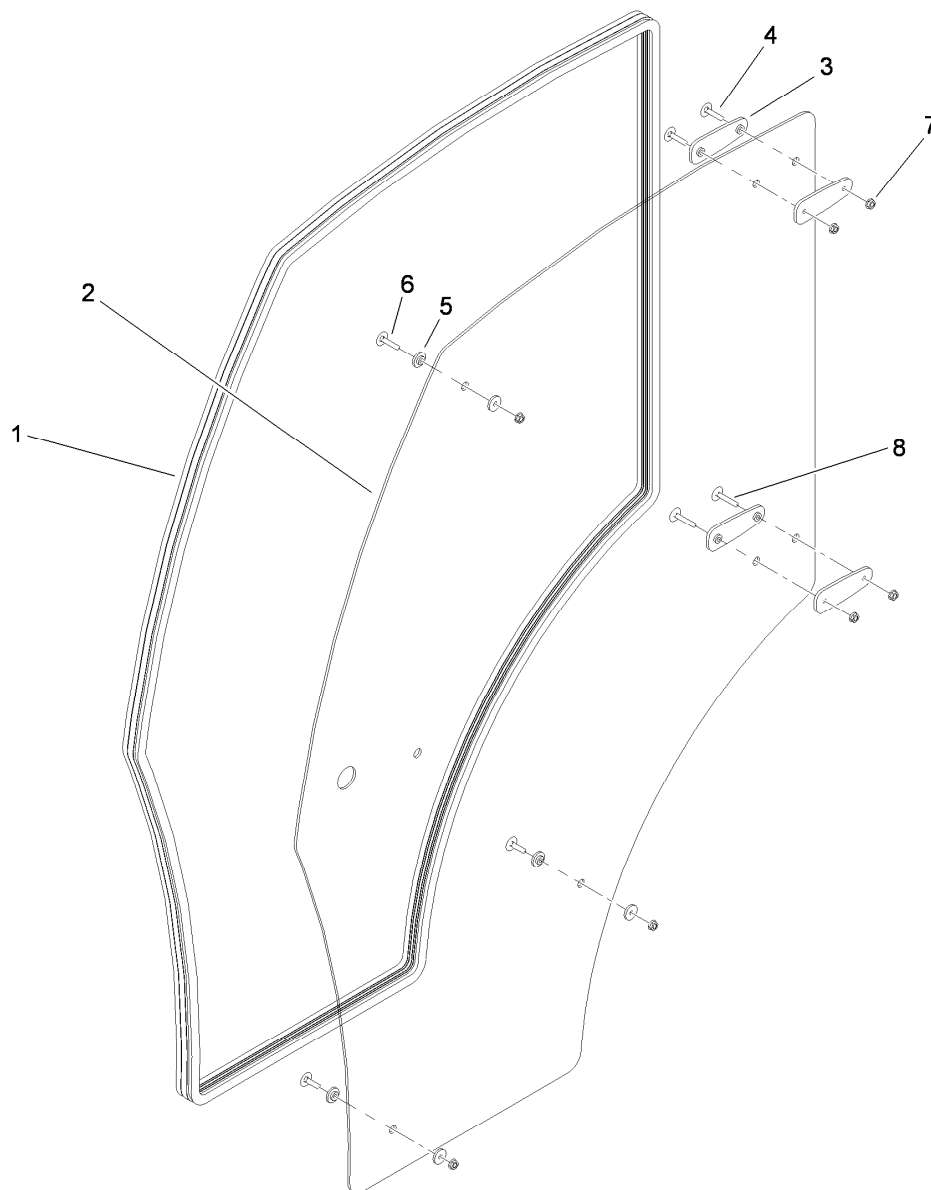
● Not serviced separately



Right Hand Door Assembly

Ref.	Part Number	Qty.	Description
1	98-3104	2	Stud-Ball
2	115-5591	2	Clip-Shock, Gas
3	115-7997	1	Shock-Door, Gas
4	32128-26	1	Nut-Flange
5	115-7991	1	Door Subframe, RH
6	33103-025	3	Screw-HHF
7	115-5538	1	RH Rotary Latch ASM
8	81-0130	2	Nut-Flange, NI
9	115-5546	1	Gasket-Handle

Ref.	Part Number	Qty.	Description
10	115-5544	1	Handle-Button, Push (With Keys)
10:1	119-4514	1	Gasket-Large
10:2	119-4515	1	Gasket-Small
11	115-5545	1	Key-Cab
13	115-7990	2	Hinge-Door, RH
13:1	115-7696	1	Washer-Hinge, Brass
14	115-7999	1	Door-Stop
15	115-7995	1	Solid Glass Door ASM



Solid Glass Door Assembly No. 115-7995

Ref.	Part Number	Qty.	Description
1	115-7992	1	Seal-Door, Bulb
2	115-7994	1	Glass-Door, Solid
3	115-7950	4	Bushing-Boxer, Door Hinge
4	115-5571	2	Bolt-Step
5	115-5570	6	Bushing-Thin
6	115-7685	3	Bolt-Step
7	115-5572	7	Nut-Flange
8	115-7954	2	Bolt-Step



Count on it.