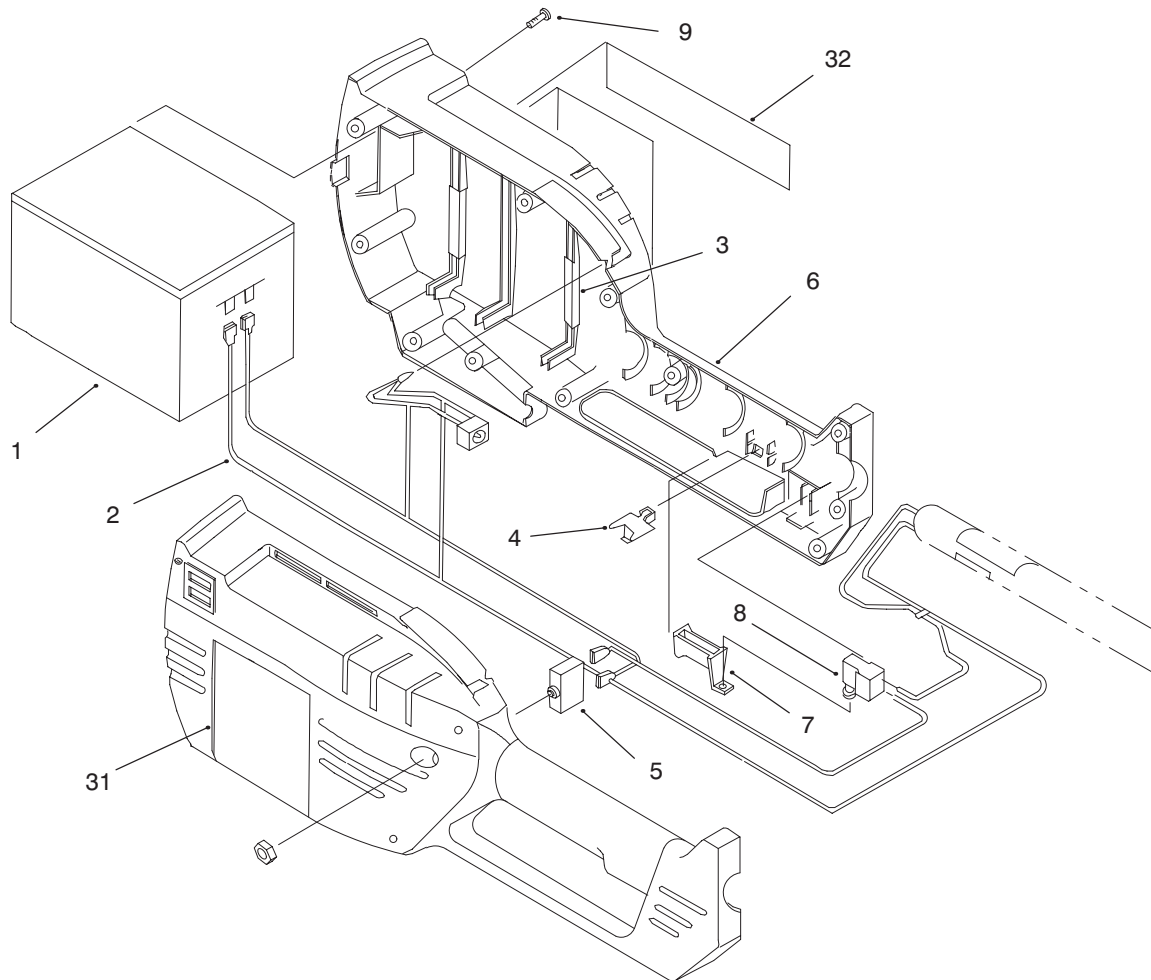




MODEL NO. 51559—6900001 & UP

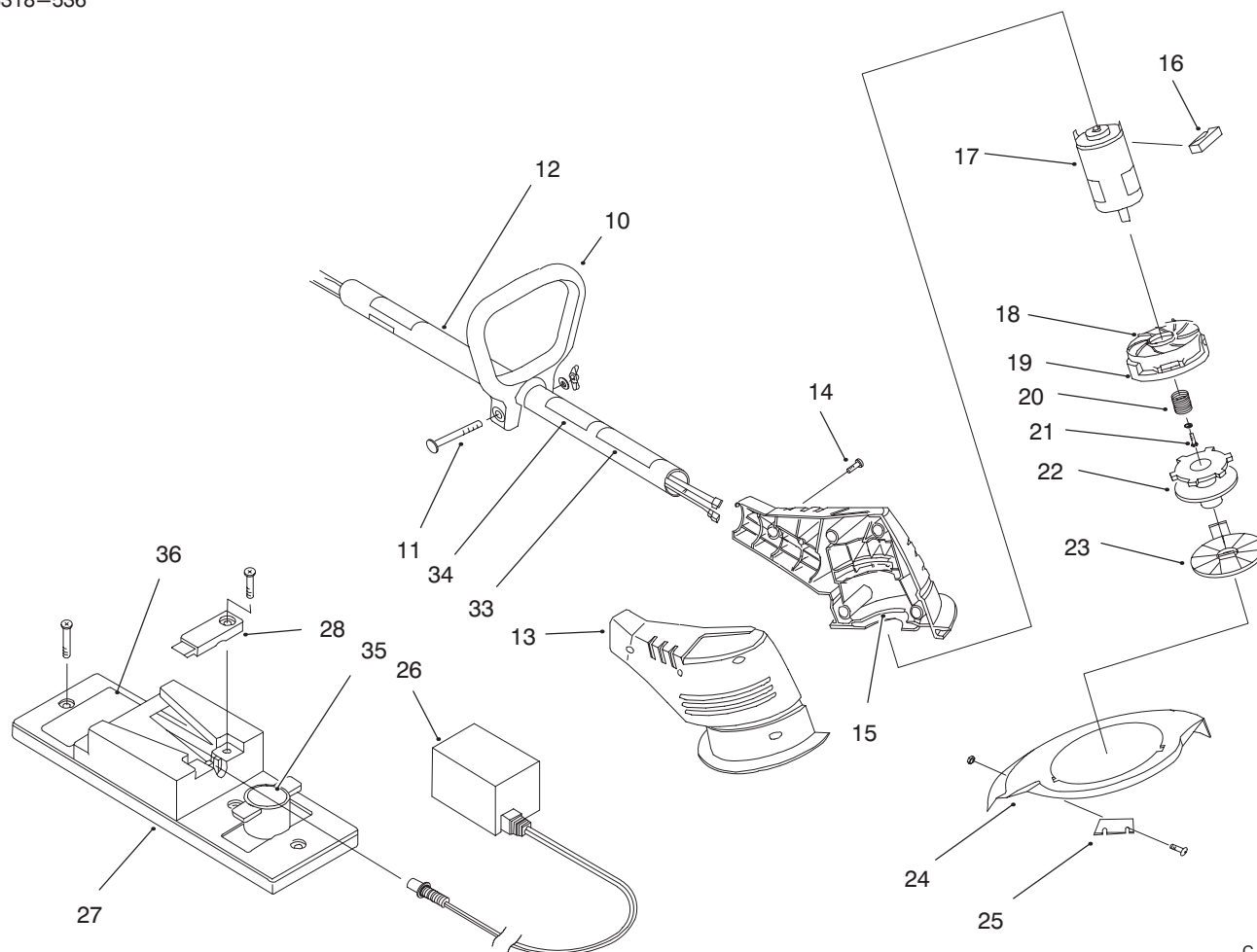
**PARTS
CATALOG**
12 VOLT CORDLESS TRIMMER


C—2520

HOUSING AND BATTERY ASSEMBLY

Ref. No.	Part No.	Description	No. Used	Ref. No.	Part No.	Description	No. Used
1	180361	Battery	1	7	180151	Trigger	1
2	180362	Wiring Harness Assembly	1	8	180150	Switch	1
3	180363	Battery Cushion Set	5	9	181482	Housing Screw	11
4	180364	Safety Release Switch	1	31	51175	Decal — Toro, Housing	1
5	180365	Thermal Overload Switch	1	32	51128	Decal — Recycle Battery	1
6	181495	Battery Housing With Out Decals	1	*	181497	Battery Housing Decal Set	1

*Not Illustrated



C-2521

MOTOR HOUSING, MOTOR & HANDLE ASSEMBLY

Ref. No.	Part No.	Description	No. Used
10	145819	D-Handle	1
11	181587	D-Handle Hardware	1
12	180367	Boom Assembly	1
13	181496	Motor Housing	1
14	181482	Housing Screw	5
15	180369	Motor Supports	3
16	180370	Anti-Rotation Block	1
17	180371	Motor	1
18	180372	Outer Spool and Eyelet (Incl. Ref. #19)	1
19	180373	Eyelet	1
20	180374	Spring	1
21	180375	Screw & Washer	1
22	92-3292	Inner Reel and .065 Line (15 ft.)	1

Ref. No.	Part No.	Description	No. Used
*	180117	Monoflail Cutting Line (50ft.)	1
23	180376	Reel Cove	1
24	180293	Guard and Blade Assembly (Incl. Ref. #25)	1
25	180377	Blade Assembly	1
26	180294	Battery Charger	1
27	180295	Wall Station Assembly	1
28	180378	Wall Station Clamp & Screw	1
33	92-3328	Decal - Safety Symbols	1
34	50925	Decal - UL Safety Warnings	1
35	51245	Decal - Toro Logo	1
36	50965	Decal - Caution	1
*	180327	Cutting Head Assembly (Incl. Ref. #18-23)	1

*Not Illustrated

TORO PART NUMBER INDEX

3318—536

Part No.	Description	Pg. Ref. No. No. Qty.	Part No.	Description	Pg. Ref. No. No. Qty.
50925	Decal — UL Safety Warnings	2 34 1	180369	Motor Supports	2 15 3
50965	Decal — Caution	2 36 1	180370	Anti—Rotation Block	2 16 1
51128	Decal — Recycle Battery	1 32 1	180371	Motor	2 17 1
51175	Decal — Toro, Housing	1 31 1	180372	Outer Spool and Eyelet	2 18 1
51245	Decal — Toro Logo	2 35 1	180373	Eyelet	2 19 1
145819	D—Handle	2 10 1	180374	Spring	2 20 1
180117	Monoflail Cutting	2 * 1	180375	Screw & Washer	2 21 1
180150	Switch	1 8 1	180376	Reel Cove	2 23 1
180151	Trigger	1 7 1	180377	Blade Assembly	2 25 1
180293	Guard and Blade Assembly	2 24 1	180378	Wall Station Clamp & Screw	2 28 1
180294	Battery Charger	2 26 1	181482	Housing Screw	1 9 11
180295	Wall Station Assembly	2 27 1	181482	Housing Screw	2 14 5
180327	Cutting Head Assembly	2 * 1	181495	Battery Housing	1 6 1
180361	Battery	1 1 1	181496	Motor Housing	2 13 1
180362	Wiring Harness Assembly	1 2 1	181497	Battery Housing Decal Set	1 * 1
180363	Battery Cushion Set	1 3 5	181587	D—Handle Hardware	2 11 1
180364	Safety Release Switch	1 4 1	92—3292	Inner Reel and	2 22 1
180365	Thermal Overload Switch	1 5 1	92—3328	Decal — Safety Symbols	2 33 1
180367	Boom Assembly	2 12 1			

*Not Illustrated

COUNTRIES OTHER THAN THE UNITED STATES OR CANADA

are dissatisfied with your Distributor's service or have difficulty obtaining guarantee information, contact the TORO importer. If all other remedies fail, you may contact us at The Toro Company.

MAINTENANCE RECORD

[illegible]