



Trash Bag Kit

GrandStand® Mower with 60-inch Cutting Unit

Model No. 119-7293

Installation Instructions

Loose Parts

Use the chart below to verify that all parts have been shipped.

Procedure	Description	Qty.	Use
1	Bracket	1	Install the bracket to a GrandStand Mower.
	Bolt, (3/8 x 1 inch) (Self tapping)	2	
2	Trash bag	1	Install the trash bag and cup holder.

1

Installing the Bracket

Parts needed for this procedure:

1	Bracket
2	Bolt, (3/8 x 1 inch) (Self tapping)

Procedure

Install the bracket to the left side of the machine with 2 bolts (3/8 x 1 inch) (Figure 1). The bolts are thread forming bolts. The holes do not require tapping.

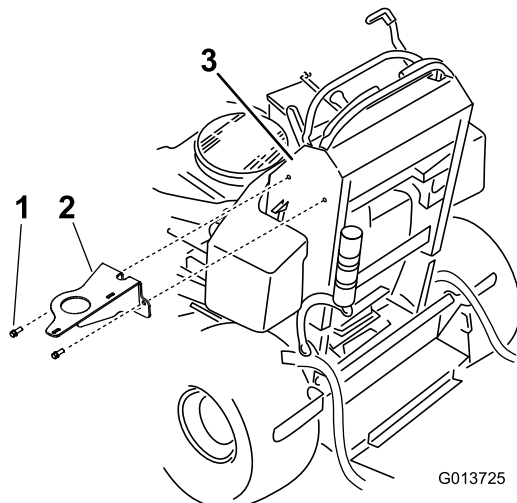


Figure 1

- 1. Left side of machine
- 2. Bracket
- 3. Bolt, (3/8 x 1 inch)

2

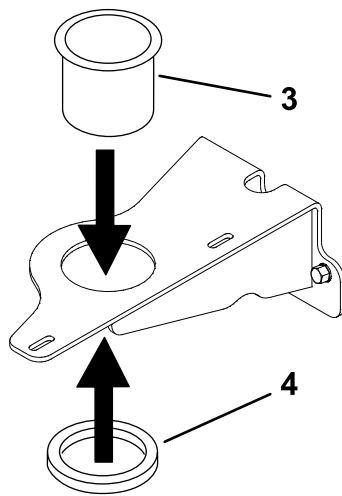
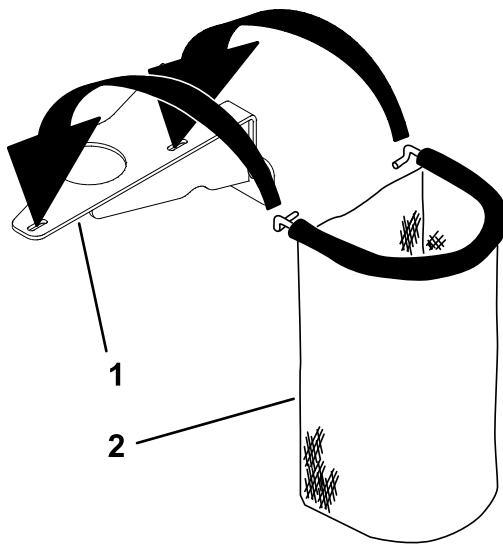
Installing the Trash Bag and Cup Holder

Parts needed for this procedure:

1	Trash bag
---	-----------

Procedure

1. Install the trash bag into the slots in the bracket (Figure 2).
2. Install the cup holder into the bracket and then slide the rubber gasket onto the cup holder under the bracket (Figure 2).



G013726

Figure 2

- | | |
|--------------|------------------|
| 1. Bracket | 3. Cup holder |
| 2. Trash bag | 4. Rubber gasket |