



**Count on it.**

**Parts Catalog**

**Snowthrower**

**Compact Utility Loader**

**Model No. 22456—Serial No. 311000001 and Up**

# Ordering Replacement Parts

To order replacement parts, please supply the part number, the quantity, and the description of each part desired.

## Understanding Reference Numbers

Each identified part in an illustration has a reference number. The reference number for a part also appears in the parts list, along with other information about the part.

This catalog uses two special reference number formats, one to indicate parts in a service assembly and another to indicate the quantity of a given part in an illustration.

## Service Assembly Reference Numbers

Parts in service assemblies have reference numbers in the form a:b. The a represents the reference number of the entire service assembly and the b represents a sequential number unique to each part within the service assembly.

For example, a wheel assembly might be identified by reference number 6, the tire by 6:1, the valve by 6:2, and the wheel by 6:3. When you order the assembly identified by reference number 6, you receive all parts identified by reference numbers 6:1, 6:2, and 6:3. However, you may also order any part individually. Reference numbers of this type appear in illustration and in parts lists.

## Reference Numbers Indicating Quantity

In an illustration, if a reference number indicates more than one part, the reference number has the form nX y. The n represents the quantity of the part, the X is the multiplication symbol, and the y represents the reference number.

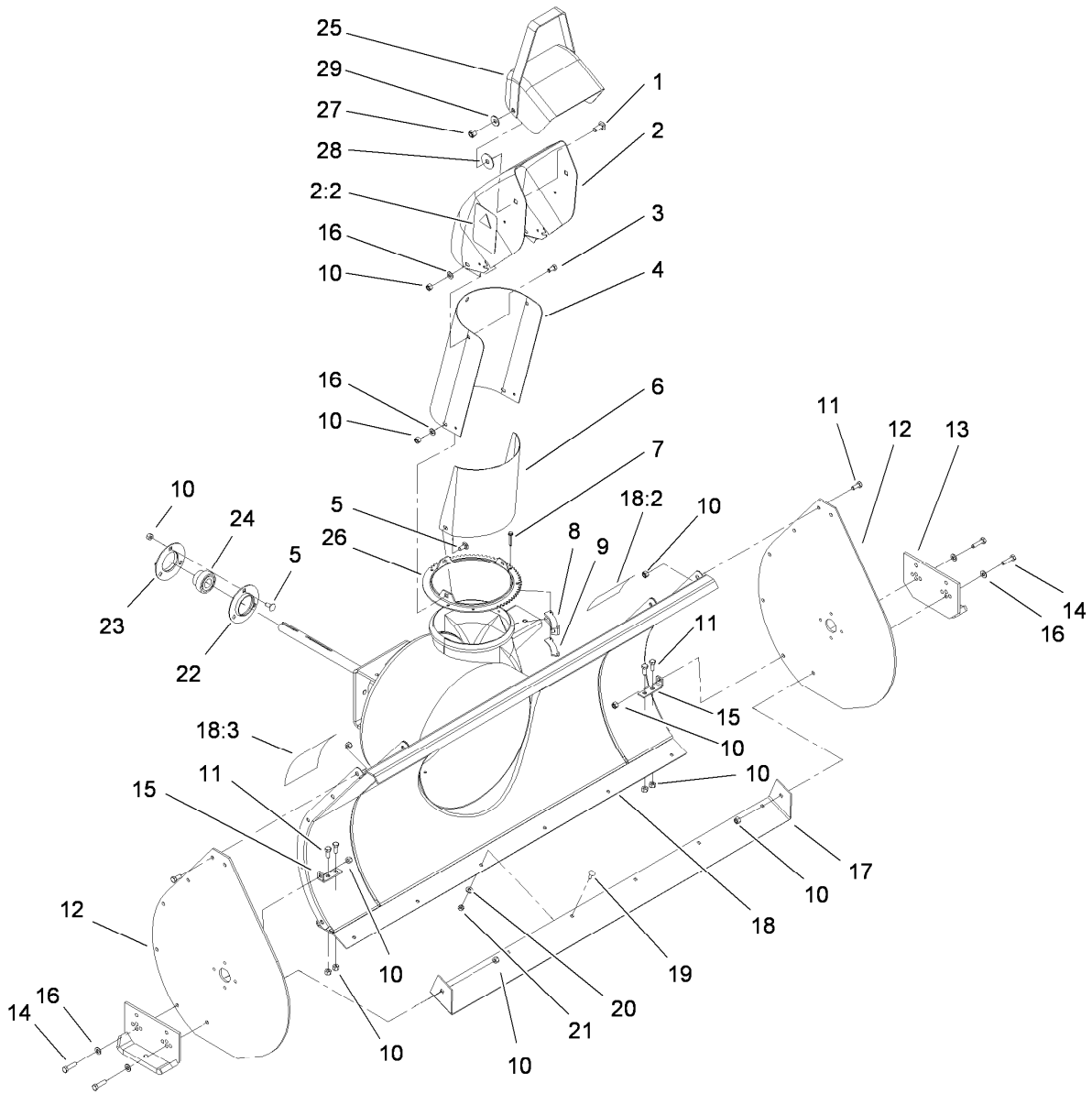
For example, in an illustration, the reference number 2X 37 means that two of the parts identified by reference number 37 are indicated.

# List of Abbreviations

<b>AR:</b> as required	<b>HSBH:</b> hex socket button head	<b>SFH:</b> slotted fillister head
<b>ASM:</b> assembly	<b>HSFH:</b> hex socket flat head	<b>SHH:</b> slotted hex head
<b>BBC:</b> blade brake control	<b>HSH:</b> hex socket head	<b>SHWH:</b> slotted hex washer head
<b>BHTF:</b> button head thread forming	<b>HWH:</b> hex washer head	<b>SPH:</b> slotted pan head
<b>CARR:</b> carriage	<b>HWHTF:</b> hex washer head thread forming	<b>SQH:</b> square head
<b>CCW:</b> counter clockwise	<b>HYD:</b> hydraulic	<b>SRH:</b> slotted round head
<b>CW:</b> clockwise	<b>LH:</b> left hand	<b>STD:</b> standard
<b>DEG:</b> degrees	<b>LP:</b> Liquid Propane	<b>TAP:</b> self tapping
<b>ECM:</b> electronic control module	<b>NI:</b> nylon insert	<b>TTH:</b> torx truss head
<b>EXT:</b> external	<b>NPTF:</b> national pipe thread fine	
<b>FH:</b> flat head	<b>PFH:</b> phillips flat head	
<b>GA:</b> gauge	<b>PPH:</b> phillips pan head	
<b>HD:</b> heavy-duty	<b>PPHTF:</b> phillips pan head thread forming	
<b>HF:</b> hex flange	<b>PRH:</b> phillips round head	
<b>HH:</b> hex head	<b>PTH:</b> phillips truss head	
<b>HHF:</b> hex head flange	<b>PTO:</b> power-take-off	
<b>HHFTF:</b> hex head flange thread forming	<b>RH:</b> right hand	
<b>HJ:</b> hex jam	<b>ROPS:</b> roll-over protection system	
<b>HLH:</b> hex lag head	<b>RRB:</b> rear roller brush	
<b>HOC:</b> height-of-cut		

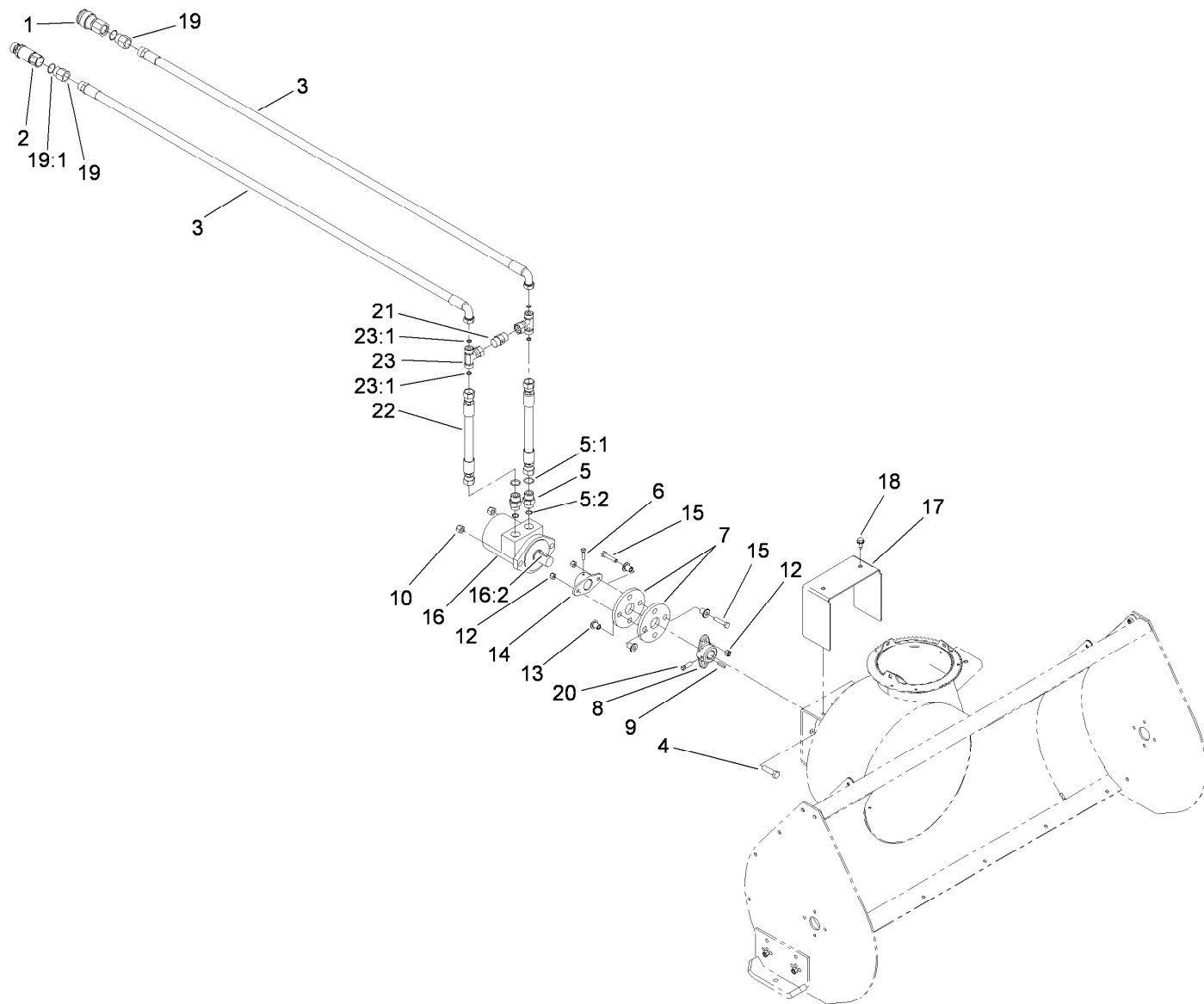
# Contents

- Discharge Chute Assembly ..... 4
- Hydraulic Hose and Motor Assembly ..... 5
- Auger and Gearcase Assembly ..... 6
- Crank and Mounting Assembly ..... 7
- Attachments and Accessories ..... 8



## Discharge Chute Assembly

Ref.	Part Number	Qty.	Description	Ref.	Part Number	Qty.	Description
1	3231-2	2	Screw-CARR	16	3256-23	10	Washer-Flat
2	100-4623	1	Discharge Chute ASM	17	99-2303-01	1	Blade-Scraper
2:2	93-7309	2	Decal-Danger, Discharge	18	99-6897	1	Housing ASM
3	322-2	3	Screw-HH	18:2	93-7310	2	Decal-Danger, Auger
4	26-1110-01	1	Extender-Chute, Upper	18:3	93-7311	1	Decal-Warning
5	3230-1	6	Bolt-CARR	19	3229-25	6	Screw-CARR
6	94-9787-01	1	Shield-Deflector	20	3256-22	6	Washer-Flat
7	100-4352	6	Screw-HWH	21	3296-42	6	Nut-Lock, NI
8	25-5450	3	Retainer-Chute	22	110568	1	Flange
9	100-4605-03	3	Plate-Retainer, Chute	23	119020	1	Flange-Relube
10	3296-29	27	Nut-Lock, NI	24	110569	1	Bearing And Collar
11	322-3	10	Screw-HH	25	11-7120-01	1	Deflector
12	117-6386-01	2	Plate-Side	26	25-5290-01	1	Ring-Swivel, Chute
13	100-4600-01	2	Skid ASM	27	3296-39	2	Nut-Lock, NI
14	322-47	4	Screw-HH	28	20-4320	2	Washer-Rubber
15	99-2304-01	2	Bracket-Support, Blade	29	3290-340	2	Washer-Belleville

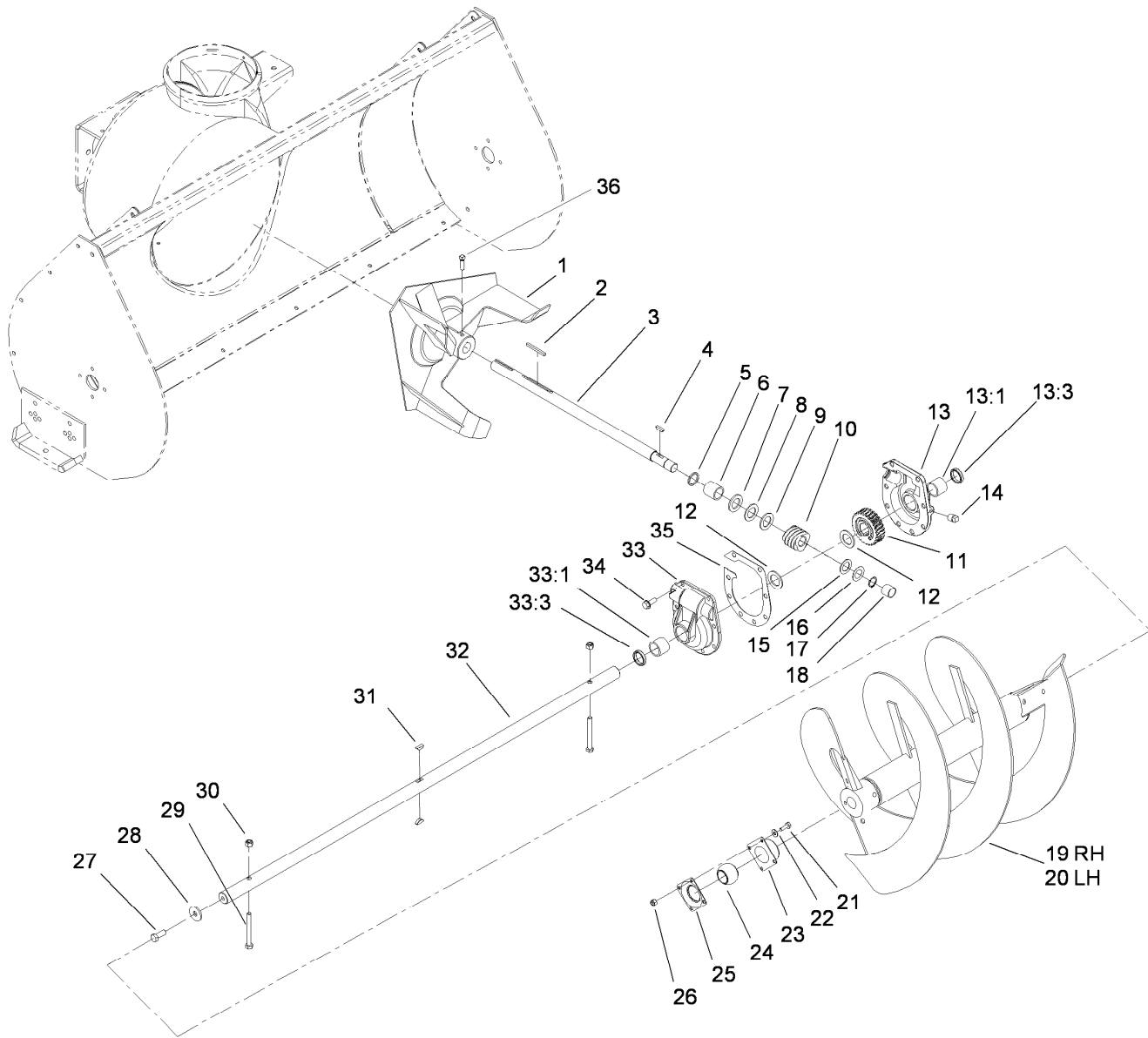


## Hydraulic Hose and Motor Assembly

Ref.	Part Number	Qty.	Description
1	104-6134	1	Coupler-Face, Flush
2	100-4701	1	Nipple-Connect, Pressure
2:1	100-6120	1	Seal Kit ●
3	99-6108	2	Hose-HYD
4	324-6	2	Screw-HH
5	340-6	2	Fitting-HYD, Straight
5:1	237-30	1	O-Ring
5:2	237-80	1	O-Ring
6	3241-5	2	Screw-Set
7	44-2230	2	Coupling-Rubber
8	117-1311	1	Hub-Pump
9	6366	1	Key
10	3296-48	2	Nut-Lock, NI
12	3296-29	4	Nut-Lock, NI
13	71-4411	4	Spacer

Ref.	Part Number	Qty.	Description
14	110-5236	1	Hub-Engine
15	322-7	4	Screw-HH
16	117-6373	1	HYD Motor ASM
16:1	1-000119	1	Seal Kit ●
16:2	13-2840	1	Key-Square
17	100-4626-01	1	Shield-Motor
18	32144-70	2	Screw-HWHTF
19	100-4617	2	Adapter-HYD
19:1	237-80	1	O-Ring
20	3242-6	2	Screw-Set, SQH
21	117-6383	1	Valve-Check
22	95-3664	2	HYD Hose ASM
23	93-6810	2	Fitting-Tee
23:1	237-30	2	O-Ring

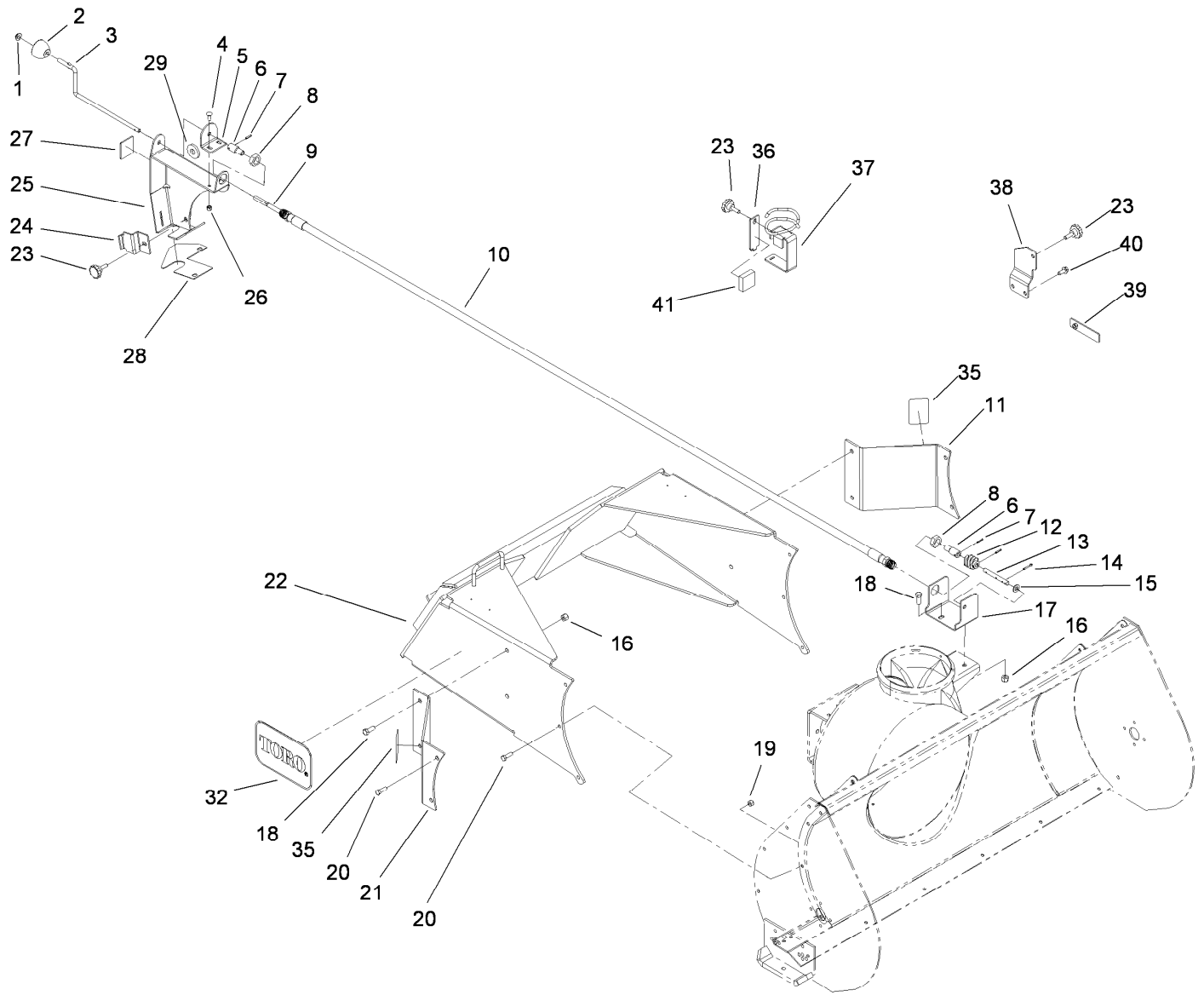
● Not illustrated



## Auger and Gearcase Assembly

Ref.	Part Number	Qty.	Description	Ref.	Part Number	Qty.	Description
1	19-8890-01	1	Impeller ASM	19	57-3300-01	1	RH Auger ASM
2	6-8590	1	Key	20	57-3370-01	1	LH Auger ASM ●
3	19-8540	1	Shaft-Impeller	21	321-4	8	Screw-HH
4	3257-23	1	Key-Woodruff	22	3256-22	8	Washer-Flat
5	237-87	1	Ring-Quad	23	20-0990	2	Bearing-Flange, Front
6	20-3210	1	Bushing-Special	24	20-0980	2	Bearing
7	252-78	1	Washer-Thrust	25	20-1000	2	Bearing-Flange, Rear
8	252-76	1	Bearing-Thrust	26	3296-42	8	Nut-Lock, NI
9	252-77	1	Thrust-Washer	27	3235-22	2	Screw-HH, Lock
10	5-7170	1	Gear	28	2844	2	Washer
11	5-7180	1	Gear-Worm, 27T	29	322-14	2	Screw-HH
12	252-71	2	Washer-Thrust	30	3296-29	2	Nut-Lock, NI
13	37-8860	1	LH Gear Case ASM	31	3257-33	2	Key-Woodruff
13:1	256-237	1	Bushing	32	57-3500	1	Shaft-Auger
13:3	7-0045	1	Seal-Oil	33	37-8850	1	RH Gear Case ASM
14	281-1	1	Plug-Pipe, SQH	33:1	256-237	1	Bushing
15	3-8664	1	Washer-Thrust	33:3	7-0045	1	Seal-Oil
16	5210	1	Washer-Shim	34	32144-41	8	Screw-Taptite
17	32120-72	1	Ring-Snap	35	105-1404	1	Gasket-Gear Box
● 18	256-32	1	Bushing	36	3242-6	2	Screw-Set, SQH

● Not illustrated



## Crank and Mounting Assembly

Ref.	Part Number	Qty.	Description	Ref.	Part Number	Qty.	Description
1	3290-320	1	Retainer-Push On	20	322-5	10	Screw-HH
2	61-4890	1	Knob-Chute	21	100-4604-01	1	Plate-Extension, RH
3	99-5906	1	Rod-Control, Chute	22	99-4424-01	1	Snowthrower Mount ASM
4	3229-1	2	Screw-CARR	23	99-6137	3	Knob-Control, Chute
5	99-5904-01	1	Bracket-Rod, Support	24	99-5907-01	1	Bracket-Clamp
6	61-4940	2	Coupler	25	99-5909-01	1	Bracket-Control, Chute
7	32121-50	3	Pin-Spring	26	3296-42	2	Nut-Lock, NI
8	353-955	2	Locknut	27	63-3510	1	Decal-Chute Direction
9	99-4978	1	Shaft-Flexible	28	99-6139	1	Foam-Chute, Control
10	99-4979	1	Hose ASM	29	83-1040	1	Washer-Flat
11	100-4603-01	1	Plate-Extension, LH	32	62-7400	2	Decal
12	8-8600	1	Gear-Worm, Chute	35	100-4627	2	Reflector
13	61-4950	1	Shaft-Gear, Worm	36	112-2615-03	1	Bracket-Retainer
14	3272-10	1	Pin-Cotter	37	112-2617-03	1	Hose Retainer ASM
15	3256-24	1	Washer-Flat	38	100-4620-01	1	Bracket, Clamp
16	3296-39	6	Nut-Lock, NI	39	100-4621-01	1	Plate ASM-Retainer
17	99-5319-01	1	Bracket-Gear, Worm	40	32144-70	2	Screw-HWHTF
18	323-6	6	Screw-HH	41	112-2616	1	Pad-Retainer, Bracket
19	3296-29	6	Nut-Lock, NI				

# Attachments and Accessories

## For 22456 Snowthrower, Compact Utility Loader

**Product Name**

**Model/Part**

Flush Face Adapter Kit ..... 100-4744

**Notes:**

**Notes:**

**Notes:**



**Count on it.**