



**Count on it.**

**Parts Catalog**

**Dingo® 220 Compact Utility  
Loader**

**Model No. 22317—Serial No. 280000001 and Up**

# Ordering Replacement Parts

To order replacement parts, please supply the part number, the quantity, and the description of each part desired.

## Understanding Reference Numbers

Each identified part in an illustration has a reference number. The reference number for a part also appears in the parts list, along with other information about the part.

This catalog uses two special reference number formats, one to indicate parts in a service assembly and another to indicate the quantity of a given part in an illustration.

## Service Assembly Reference Numbers

Parts in service assemblies have reference numbers in the form a:b. The a represents the reference number of the entire service assembly and the b represents a sequential number unique to each part within the service assembly.

For example, a wheel assembly might be identified by reference number 6, the tire by 6:1, the valve by 6:2, and the wheel by 6:3. When you order the assembly identified by reference number 6, you receive all parts identified by reference numbers 6:1, 6:2, and 6:3. However, you may also order any part individually. Reference numbers of this type appear in illustration and in parts lists.

## Reference Numbers Indicating Quantity

In an illustration, if a reference number indicates more than one part, the reference number has the form nX y. The n represents the quantity of the part, the X is the multiplication symbol, and the y represents the reference number.

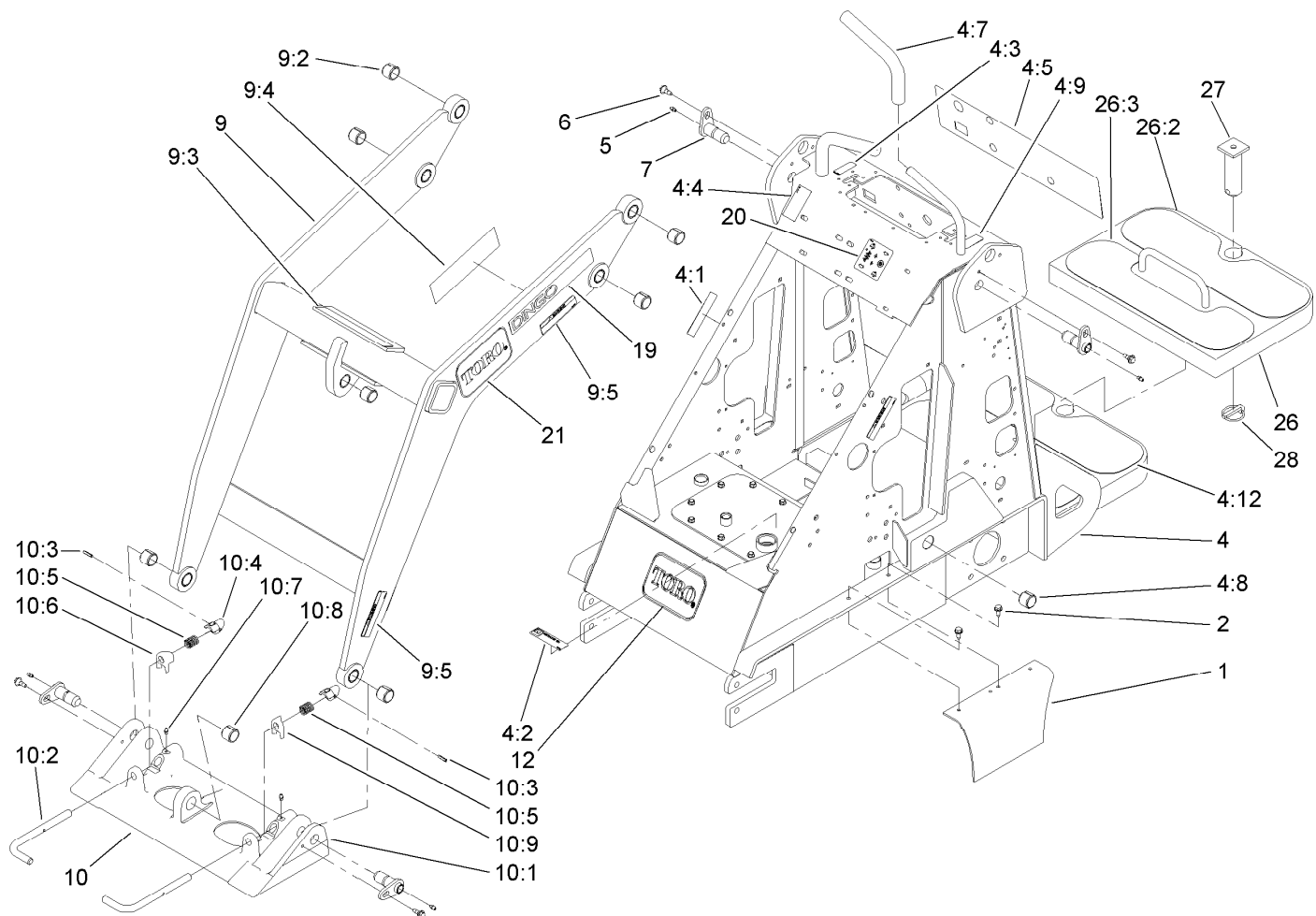
For example, in an illustration, the reference number 2X 37 means that two of the parts identified by reference number 37 are indicated.

# List of Abbreviations

<b>AR:</b> as required	<b>HSBH:</b> hex socket button head	<b>SFH:</b> slotted fillister head
<b>ASM:</b> assembly	<b>HSFH:</b> hex socket flat head	<b>SHH:</b> slotted hex head
<b>BBC:</b> blade brake control	<b>HSH:</b> hex socket head	<b>SHWH:</b> slotted hex washer head
<b>BHTF:</b> button head thread forming	<b>HWH:</b> hex washer head	<b>SPH:</b> slotted pan head
<b>CARR:</b> carriage	<b>HWHTF:</b> hex washer head thread forming	<b>SQH:</b> square head
<b>CCW:</b> counter clockwise	<b>HYD:</b> hydraulic	<b>SRH:</b> slotted round head
<b>CW:</b> clockwise	<b>LH:</b> left hand	<b>STD:</b> standard
<b>DEG:</b> degrees	<b>LP:</b> Liquid Propane	<b>TAP:</b> self tapping
<b>ECM:</b> electronic control module	<b>NI:</b> nylon insert	<b>TTH:</b> torx truss head
<b>EXT:</b> external	<b>NPTF:</b> national pipe thread fine	
<b>FH:</b> flat head	<b>PFH:</b> phillips flat head	
<b>GA:</b> gauge	<b>PPH:</b> phillips pan head	
<b>HD:</b> heavy-duty	<b>PPHTF:</b> phillips pan head thread forming	
<b>HF:</b> hex flange	<b>PRH:</b> phillips round head	
<b>HH:</b> hex head	<b>PTH:</b> phillips truss head	
<b>HHF:</b> hex head flange	<b>PTO:</b> power-take-off	
<b>HHFTF:</b> hex head flange thread forming	<b>RH:</b> right hand	
<b>HJ:</b> hex jam	<b>ROPS:</b> roll-over protection system	
<b>HLH:</b> hex lag head	<b>RRB:</b> rear roller brush	
<b>HOC:</b> height-of-cut		

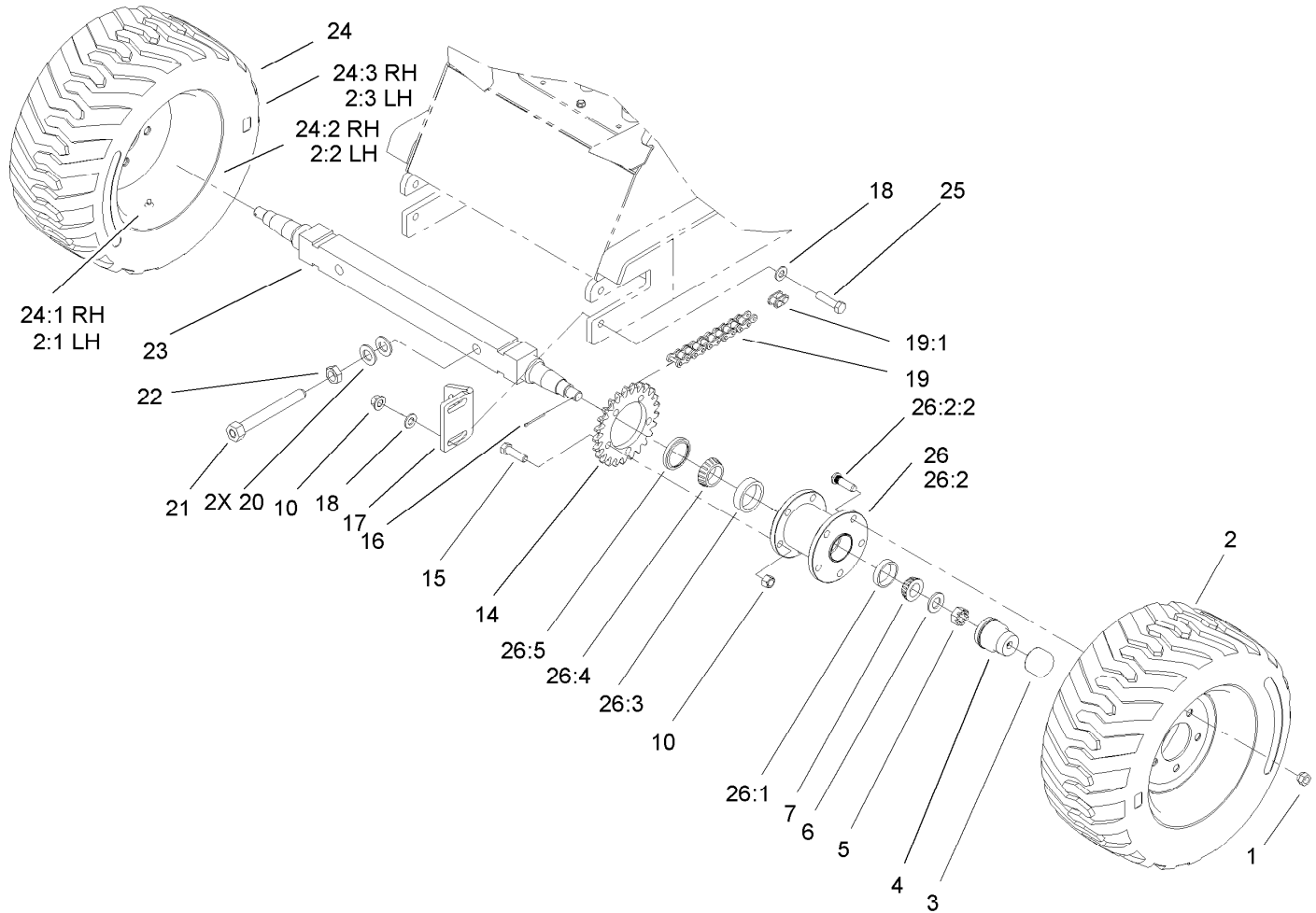
# Contents

Frame and Loader Arm Assembly .....	4
Front Wheel Assembly .....	5
Rear Wheel Assembly .....	6
Hydraulic Motor Assembly No. 99-3052 .....	7
Engine Assembly .....	8
Hydraulic Motor Assembly No. 108-4710 .....	9
Hydraulic Assembly .....	10
Hydraulic Valve Assembly .....	11
Hydraulic Selector Valve Assembly No. 99-3072 .....	12
Auxiliary Hydraulic Valve Assembly No. 99-3077 .....	13
Hydraulic Traction Assembly .....	14
Hydraulic Valve Assembly No. 105-6246 .....	16
Hydraulic Cylinder Assembly .....	17
Hydraulic Cylinder Assembly No. 105-7867 .....	18
Electrical Assembly .....	19
Crankshaft Assembly Kohler CH20S-64763 .....	20
Crankcase Assembly Kohler CH20S-64763 .....	21
Oil Pan and Lubrication Assembly Kohler CH20S-64763 .....	22
Head, Valve and Breather Assembly Kohler CH20S-64763 .....	23
Ignition and Electrical Assembly Kohler CH20S-64763 .....	25
Blower Housing and Baffle Assembly Kohler CH20S-64763 .....	26
Starting System Assembly Kohler CH20S-64763 .....	27
Fuel System Assembly Kohler CH20S-64763 .....	28
Engine Control Assembly Kohler CH20S-64763 .....	29
Air Intake and Filtration Assembly Kohler CH20S-64763 .....	30
Exhaust Kit Kohler CH20S-64763 .....	31
Decal Set Kohler CH20S-64763 .....	32
Attachments and Accessories .....	33



## Frame and Loader Arm Assembly

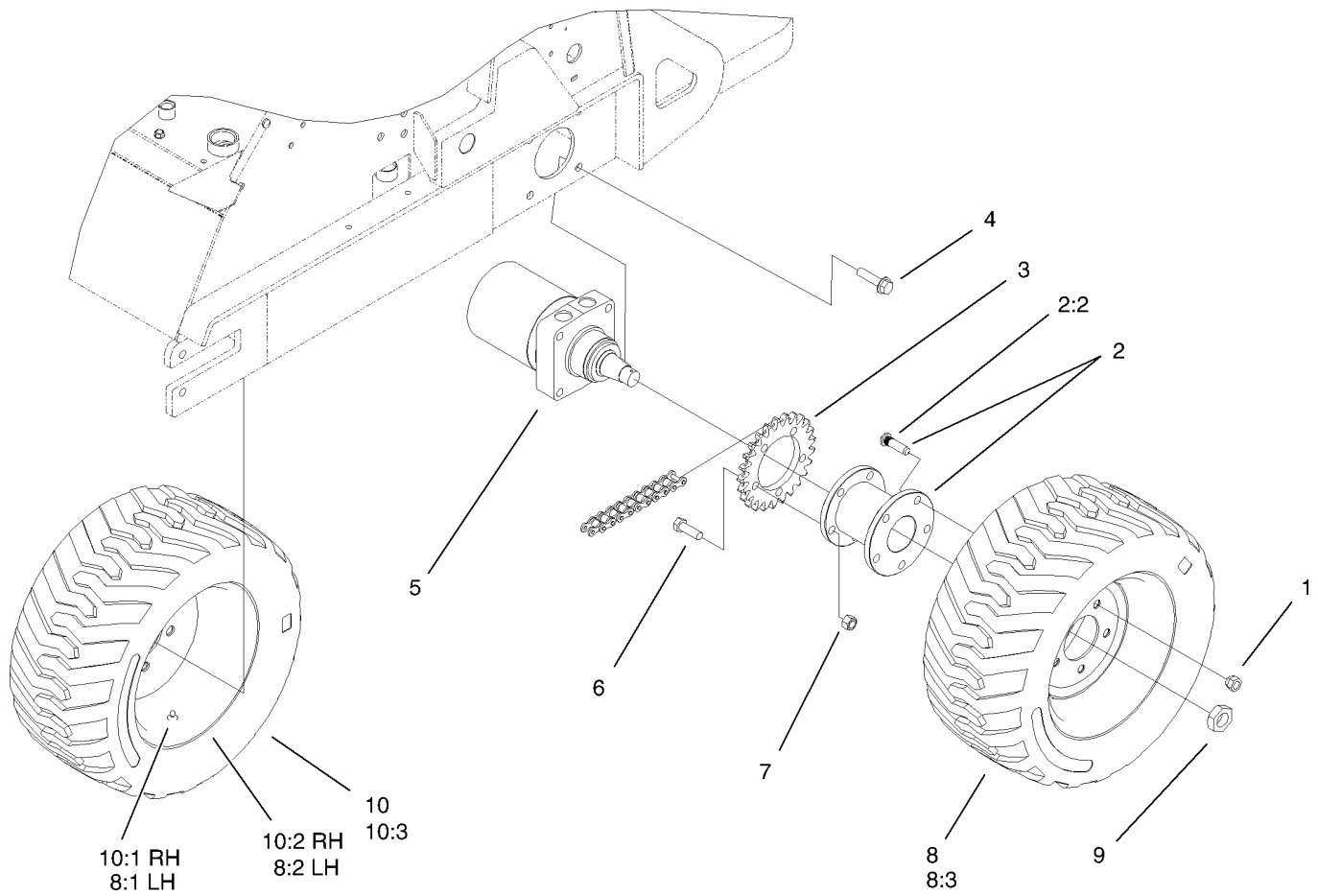
Ref.	Part Number	Qty.	Description	Ref.	Part Number	Qty.	Description
1	98-4669-01	2	Cover-Chain	10	105-8364	1	Quick Attach ASM
2	32144-70	4	Screw-HWHTF	10:1	105-0245-03	1	Mount-Attach, Quick
4	108-9700	1	Frame ASM	10:2	105-8367	2	Pin-Locking
4:1	100-6141	2	Decal-Pinch	10:3	3285-1	2	Pin-Grooved
4:2	105-8432	1	Decal-Oil, HYD	10:4	105-0246	2	Cam
4:3	94-2551	1	Decal-Choke	10:5	98-4694	2	Spring-Compression
4:4	98-4677	1	Decal-Power, Auxiliary	10:6	104-5909	1	Stop-RH
4:5	108-9732	1	Decal-Panel, Control	10:7	302-5	2	Fitting-Grease
4:7	98-4845	2	Grip-Cushion	10:8	98-4871	1	Bushing-Tension
4:8	98-4871	2	Bushing-Tension	10:9	104-5903	1	Stop-LH
4:9	98-8219	1	Decal-Throttle	12	62-5550	1	Decal
4:12	98-9947	2	Tread-Foot	19	105-8426	2	Decal
5	302-5	4	Fitting-Grease	20	108-9716	1	Decal-Selector, Speed
6	99-5105	4	Bolt-Shoulder	21	93-7340	2	Decal
7	112-2609	4	Pivot Pin ASM	26	112-4947	1	Counterweight ASM
9	106-8155	1	Loader ASM	26:2	98-9947	1	Tread-Foot
9:2	98-4871	7	Bushing-Tension	26:3	112-4948	1	Tread
9:3	98-4682	1	Decal-Caution	27	99-8638	1	Pin ASM
9:4	98-9051	1	Decal-Danger	28	99-9978	1	Pin-Lynch
9:5	100-6141	4	Decal-Pinch				



## Front Wheel Assembly

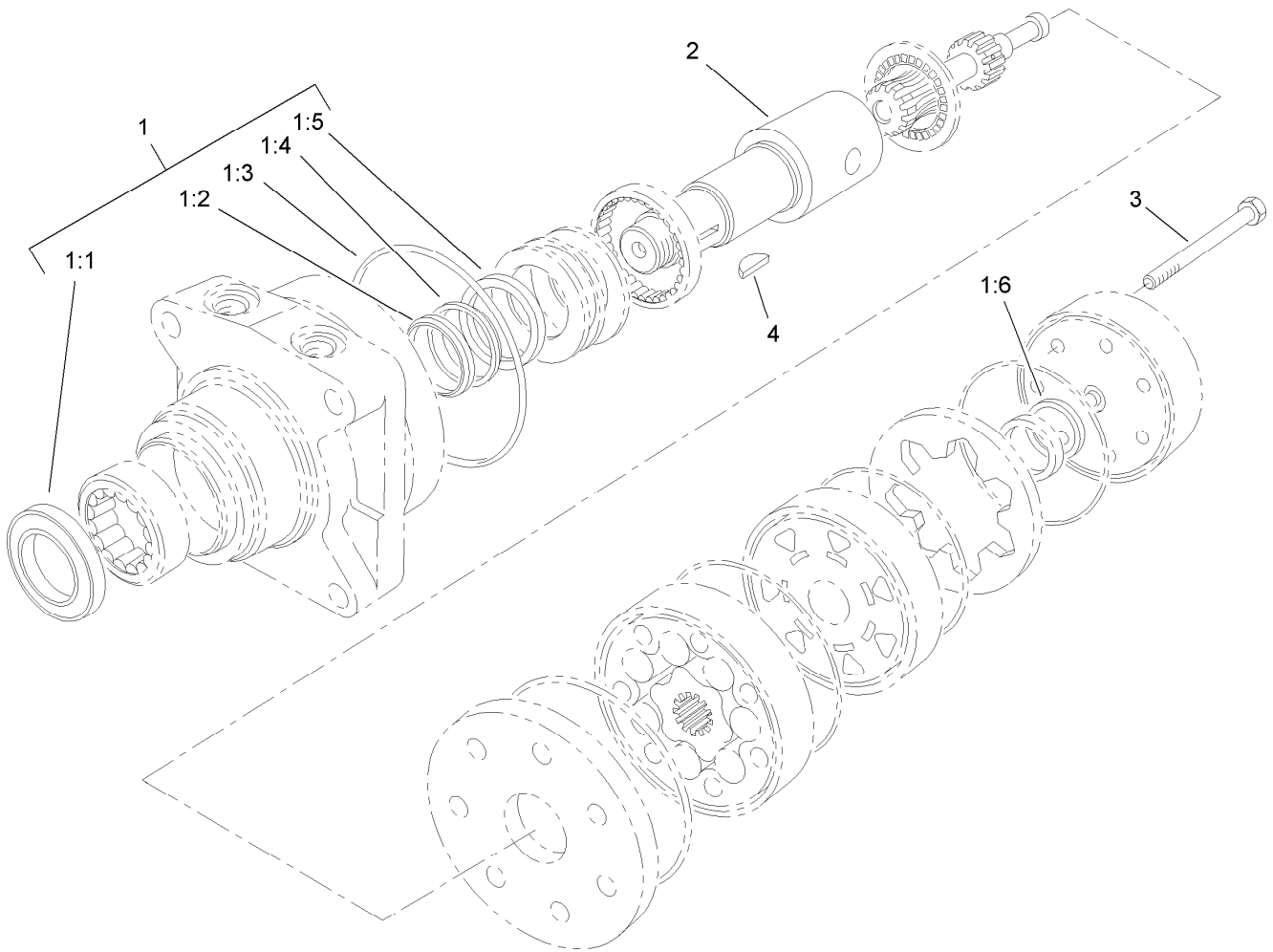
Ref.	Part Number	Qty.	Description	Ref.	Part Number	Qty.	Description
1	242-50	10	Nut-Lug	19:1	98-9089	1	Link-Connecting
2	98-2747	1	LH Wheel And Tire ASM	20	3256-28	4	Washer-Flat
2:1	232-27	1	Stem-Valve	21	98-4706	2	Bolt-Tension
2:2	98-2748	1	Wheel	22	3217-12	2	Nut-Hex
2:3	98-2749	1	Tire	23	98-4825	1	Axle
3	100-3809	2	Cap-Protector, Bearing	24	99-1447	1	RH Wheel And Tire ASM
4	100-3769	2	Protector-Bearing	24:1	232-27	1	Stem-Valve
5	32136-5	2	Nut-Hex, Slotted	24:2	98-2748	1	Wheel
6	3256-28	2	Washer-Flat	24:3	98-2749	1	Tire
7	254-94	2	Bearing-Cone, Tapered	25	325-8	4	Screw-HH
10	3296-23	14	Nut-Lock, NI	26		2	Hub-Front ●
14	98-9937	2	Sprocket-25T	26:1	254-72	1	Bearing-Cup, Tapered
15	325-7	10	Screw-HH	26:2	100-9989	1	Front Hub ASM
16	3272-12	2	Pin-Cotter	26:2:2	10-6830	5	Stud-Type, Drive
17	99-5106-03	2	Bracket-Axle	26:3	254-107	1	Cup-Bearing, Tapered
18	3256-26	8	Washer-Flat	26:4	254-106	1	Cone-Bearing, Tapered
19	98-4906	2	Chain-Roller	26:5	98-4705	1	Seal-Bearing, Wheel

● Not serviced separately



## Rear Wheel Assembly

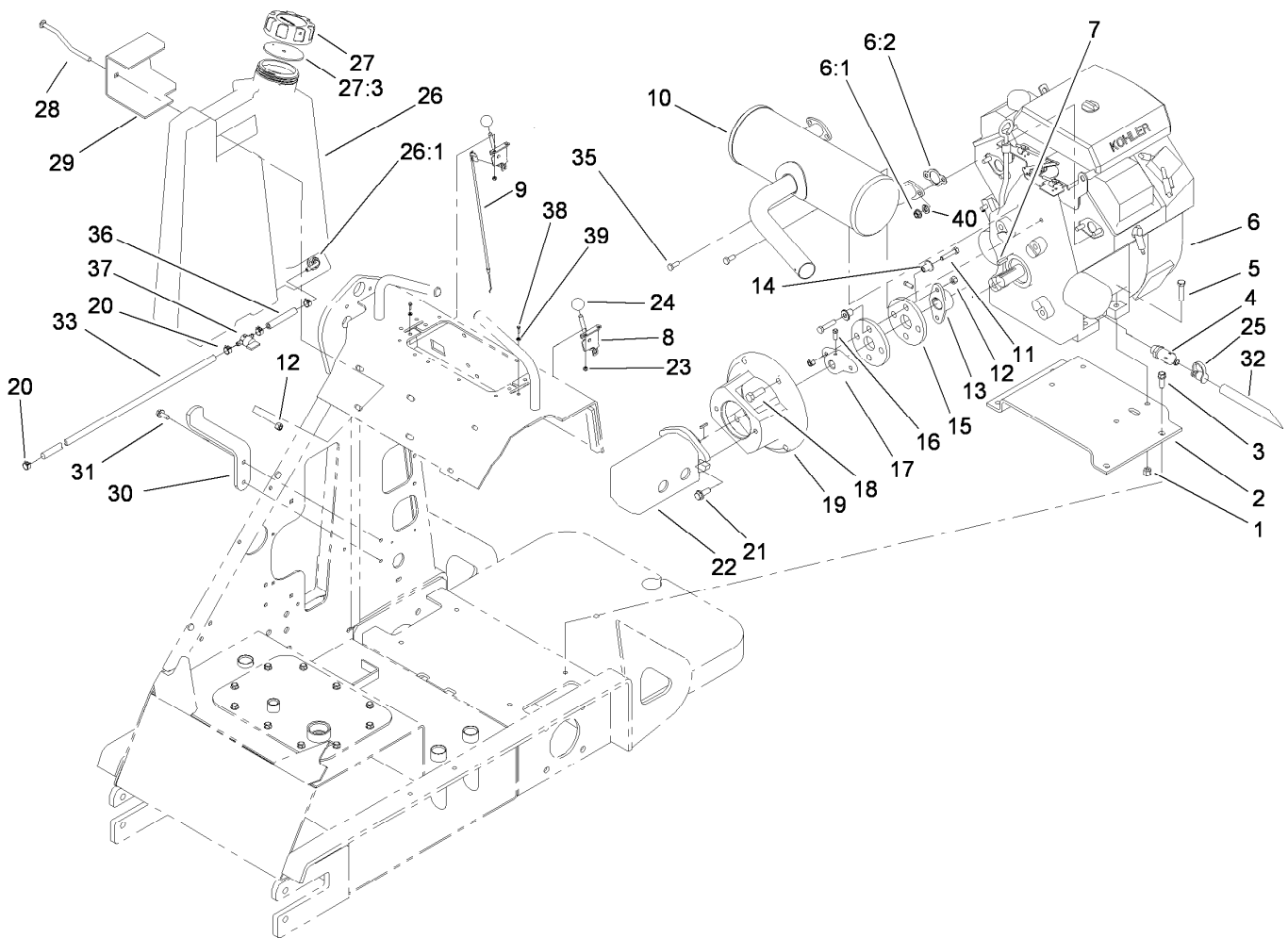
Ref.	Part Number	Qty.	Description
1	242-50	10	Nut-Lug
2	100-9990	2	Rear Hub ASM
2:2	10-6830	5	Stud-Type, Drive
3	98-9937	2	Sprocket-25T
4	3234-27	8	Screw-HHF
5	99-3052	2	HYD Motor ASM
6	325-7	10	Screw-HH
7	3296-23	10	Nut-Lock, NI
8	98-2747	1	LH Wheel And Tire ASM
8:1	232-27	1	Stem-Valve
8:2	98-2748	1	Wheel
8:3	98-2749	1	Tire
9	106-8159	2	Nut-Lock
10	99-1447	1	RH Wheel And Tire ASM
10:1	232-27	1	Stem-Valve
10:2	98-2748	1	Wheel
10:3	98-2749	1	Tire



## Hydraulic Motor Assembly No. 99-3052

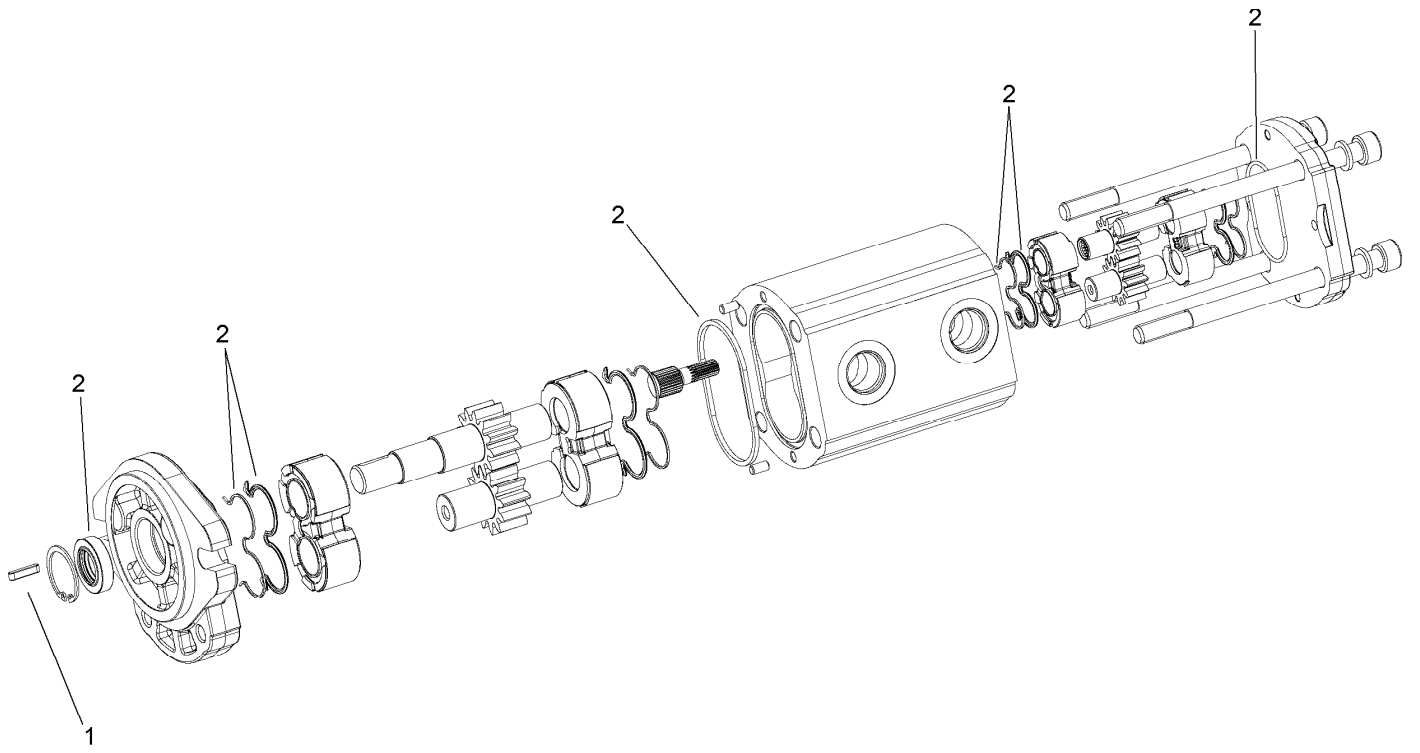
<i>Ref.</i>	<i>Part Number</i>	<i>Qty.</i>	<i>Description</i>
1	94-8178	1	Seal Kit
1:1		1	Seal-Dirt And Water ●
1:2		1	Backup-Ring ●
1:3		1	Seal-Shaft ●
1:4		1	Washer-Backup ●
1:5		5	Seal-Square, Ring (Inner) ●
1:6		1	Seal-Commutator ●
2	99-3090	1	Shaft-Coupling
3	99-3091	7	Screw-Cap, HH
4	3257-42	1	Key-Woodruff

● Not serviced separately



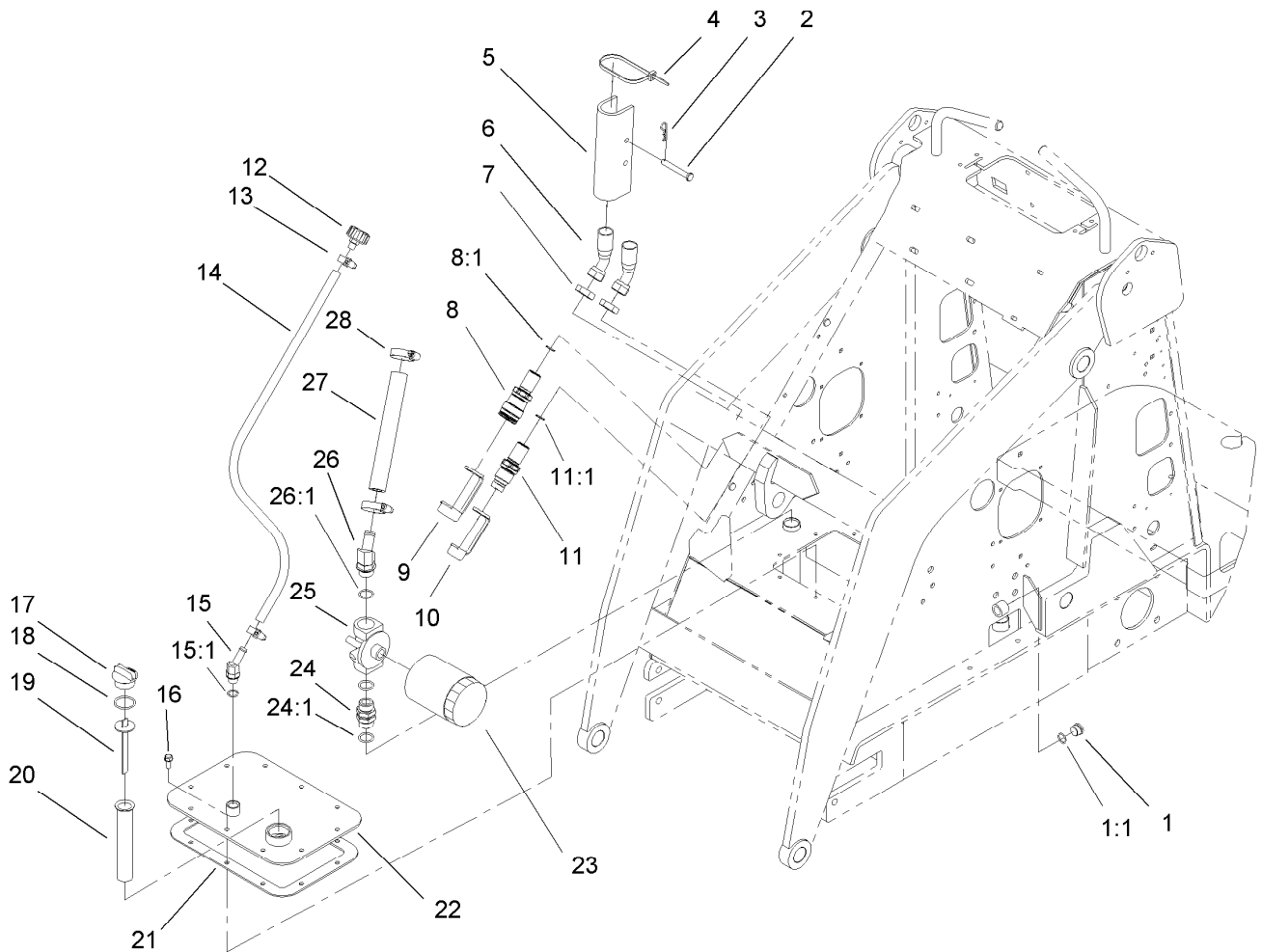
## Engine Assembly

<i>Ref.</i>	<i>Part Number</i>	<i>Qty.</i>	<i>Description</i>	<i>Ref.</i>	<i>Part Number</i>	<i>Qty.</i>	<i>Description</i>
1	3296-39	4	Nut-Lock, NI	20	2412-98	4	Clamp
2	98-4666-03	1	Mount-Engine	21	66-9300	2	Screw-HF
3	95-1726	4	Screw-Taptite	22	108-4710	1	HYD Pump ASM
4	92-6877	1	Valve-Drain, Oil	23	32149-7	4	Nut-Keps
5	323-9	4	Screw-HH	24	233-42	2	Knob
6	108-4740	1	Engine-Kohler, Ch20S 64763	25	354-79	1	Cap-Dust
6:1	92-6780	4	Nut-HF	26	105-8440	1	RH Fuel Tank ASM
6:2	93-0350	2	Gasket-Exhaust	26:1	103-2605	1	Fitting-Fuel, Bulkhead
7	10-7070	1	Key-Square	27	104-7418	1	Cap-Fuel, Gas
8	108-9730	2	Control Lever ASM	27:3	104-7420	1	Gasket-Vented
9	108-4718	2	Cable-Control	28	98-4657	1	Bolt-Mount
10	105-8381	1	Muffler	29	98-4655-03	1	Plate-Mount
11	322-7	4	Screw-HH	30	98-4656-03	1	Mount-Bottom, Tank
12	3296-29	5	Nut-Lock, NI	31	32144-70	2	Screw-HWHTF
13	110-5236	1	Hub-Engine	32	98-4667	1	Hose-Drain, Oil
14	71-4411	4	Spacer	33	109-0273	1	Hose-Fuel
15	44-2230	2	Coupling-Rubber	35	33114-020	2	Screw-HH
16	3241-6	4	Screw-SQH	36	109-0304	1	Hose-Fuel
17	98-4701	1	Hub-Pump	37	1-603770	1	Valve-Fuel
18	324-6	4	Screw-HH	38	3290-134	4	Screw
19	98-2751-03	1	Mount-Pump	39	3256-51	4	Washer-Flat
				40	3253-4	4	Washer-Lock



## Hydraulic Motor Assembly No. 108-4710

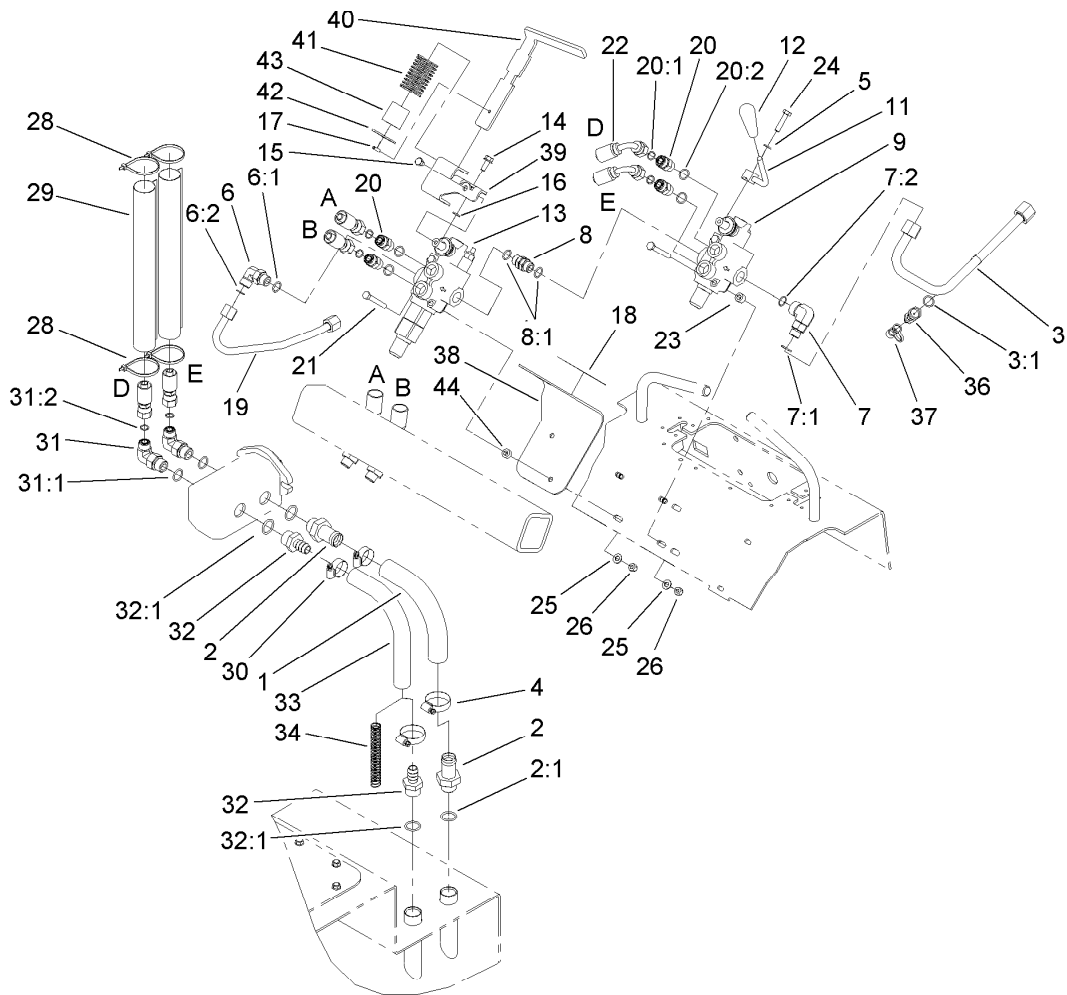
<i>Ref.</i>	<i>Part Number</i>	<i>Qty.</i>	<i>Description</i>
1	98-4700	1	Key-Square
2	99-1353	1	Seal Kit



## Hydraulic Assembly

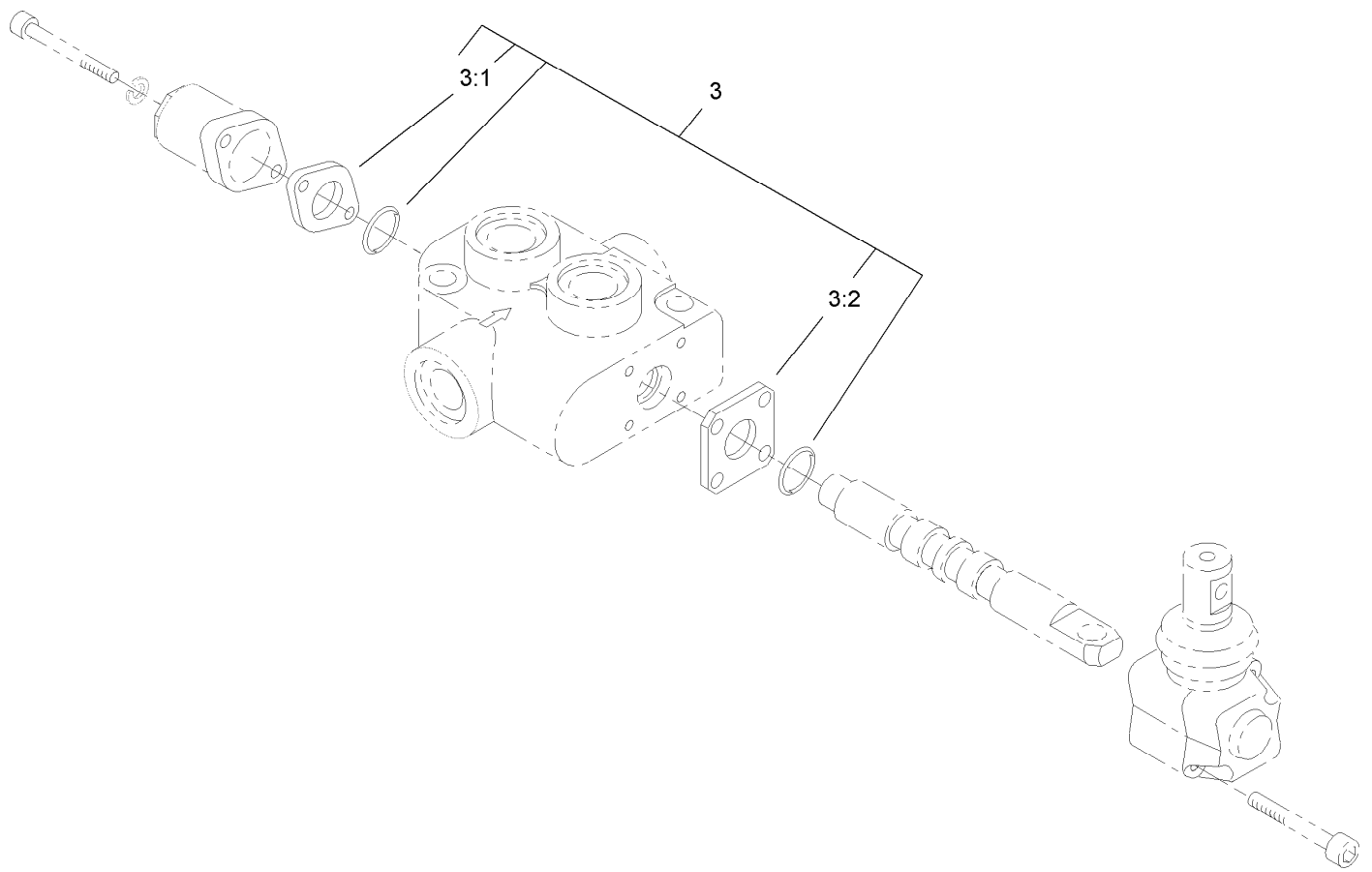
Ref.	Part Number	Qty.	Description	Ref.	Part Number	Qty.	Description
1	353-988	1	Plug-Hex	15	354-126	1	Fitting-HYD, 45 DEG
1:1	237-79	1	O-Ring	15:1	237-79	1	O-Ring
2	283-52	2	Pin-Clevis	16	98-9940	10	Screw
3	3290-467	2	Pin-Hair	17	93-7498	1	Plug-Plastic
4	3290-379	9	Tie-Cable	18	237-123	1	O-Ring
5	98-4675-01	2	Lock-Cylinder	19	100-2097	1	Dipstick-Oil
6	100-8817	2	HYD Hose ASM	20	61-2790	1	Filter-Screen
7	340-74	2	Nut-Lock, Bulkhead	21	98-9927	1	Gasket-Cover
8	105-8394	1	Bulkhead Coupler ASM	22	98-2709	1	Cover
8:1	237-65	1	O-Ring	23	54-0110	1	Filter-Oil, Transmission
9	100-8816	1	Cap-Dust, Coupler	24	98-9906	1	Fitting-Thread, Straight
10	100-8815	1	Cap-Dust, Nipple	24:1	237-81	2	O-Ring
11	105-8395	1	Bulkhead Nipple ASM	25	92-5821	1	Filter Head ASM
11:1	237-65	1	O-Ring	26	354-127	1	Elbow-45 DEG
11:2	100-6120	1	Seal Kit ●	26:1	237-81	1	O-Ring
12	68-6150	1	Breather	27	98-2713	1	Hose-Suction, HYD
13	2412-36	2	Clamp-Hose	28	2412-129	2	Clamp-Hose
14	98-2708	1	Hose-Vent				

● Not illustrated



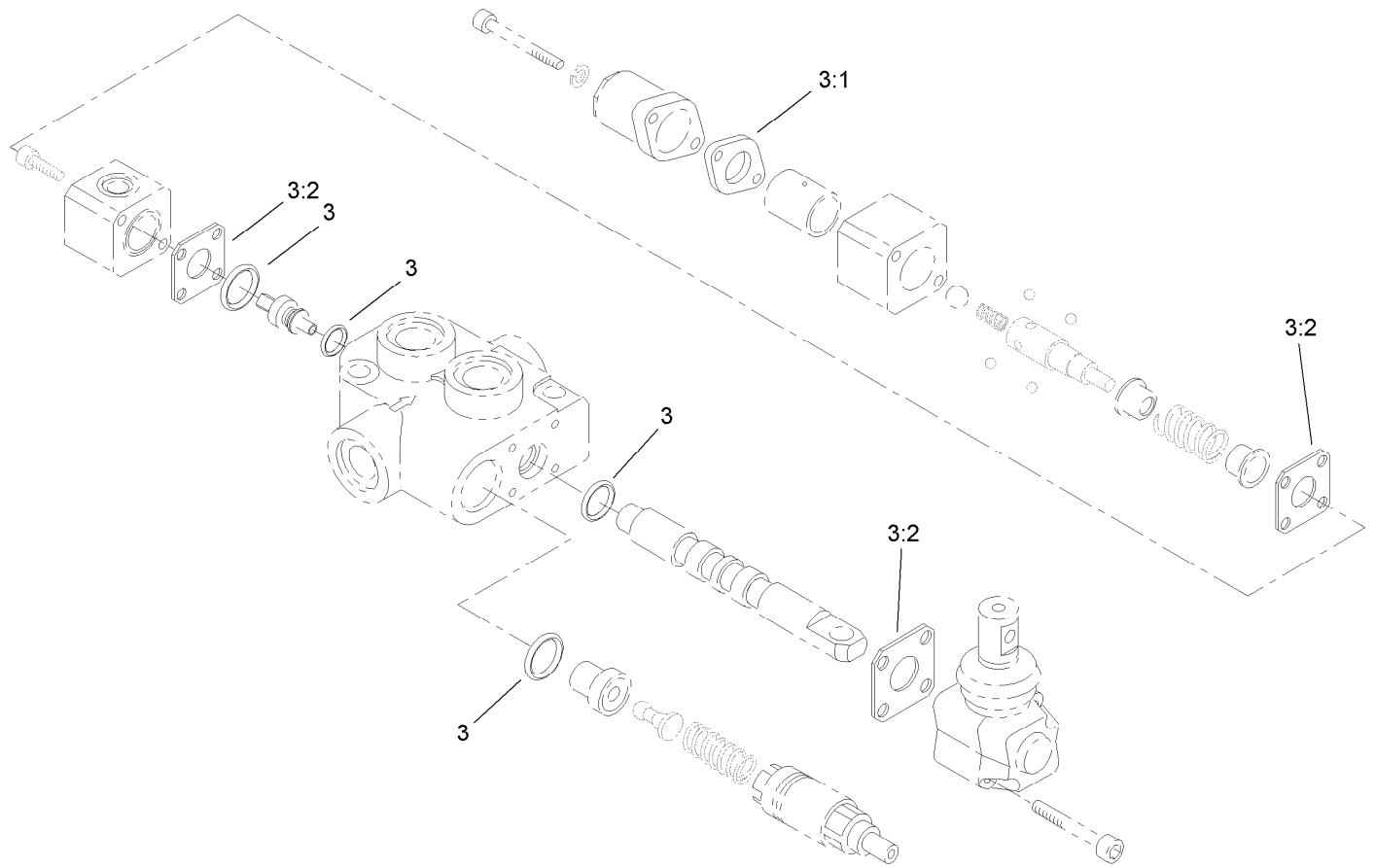
## Hydraulic Valve Assembly

Ref.	Part Number	Qty.	Description	Ref.	Part Number	Qty.	Description
1	99-3046	1	Hose-Suction, Formed	20:2	237-79	1	O-Ring
2	99-3017	2	Fitting	21	322-12	4	Screw-HH
2:1	237-81	1	O-Ring	22	98-4747	2	HYD Hose ASM
3	108-4716	1	HYD Tube ASM	23	98-4695	2	Spacer
3:1	237-22	1	O-Ring	24	33114-035	1	Screw-HH
4	2412-111	2	Clamp	25	3256-23	4	Washer-Flat
5	3253-4	1	Washer-Lock	26	3296-29	4	Nut-Lock, NI
6	340-98	1	Fitting-HYD, 90 DEG	28	3290-379	4	Tie-Cable
6:1	237-79	1	O-Ring	29	108-9715	2	Sleeve-Thermal
6:2	237-30	1	O-Ring	30	2412-129	2	Clamp-Hose
7	340-153	1	Fitting-Elbow, 90 DEG	31	340-105	2	Fitting-HYD, 90 DEG
7:1	237-79	1	O-Ring	31:1	237-80	1	O-Ring
7:2	237-151	1	O-Ring	31:2	237-30	1	O-Ring
8	95-3209	1	Fitting-Thread, Straight	32	354-73	2	Fitting-Straight
8:1	237-79	2	O-Ring	32:1	237-81	1	O-Ring
9	99-3072	1	Valve-Selector	33	98-2713	1	Hose-Suction, HYD
11	108-9709-03	1	Lever-Control	34	99-5349	1	Spring-Compression
12	98-0152	1	Knob-Tapered	36	86-5480	1	Nipple-Test
13	99-3077	1	Valve-HYD, Auxiliary	37	354-79	1	Cap-Dust
14	33104-020	1	Screw-HHF	38	110-0121-03	1	Bracket-Auxiliary
15	33114-010	1	Screw-HH	39	114-1263-03	1	Mount-Lever, Aux
16	3253-4	1	Washer-Lock	40	110-0123	1	Handle-Lever, Auxiliary
17	32121-3	1	Pin-Spring	41	110-0124	1	Spring
18	108-4733	1	Decal-Auxiliary	42	110-0125	1	Retainer-Spring, Auxiliary
19	105-7879	1	Tube-HYD	43	110-0160	1	Tube-Spring
20	340-4	4	Fitting-HYD, Straight	44	100-2085	2	Spacer
20:1	237-30	1	O-Ring				



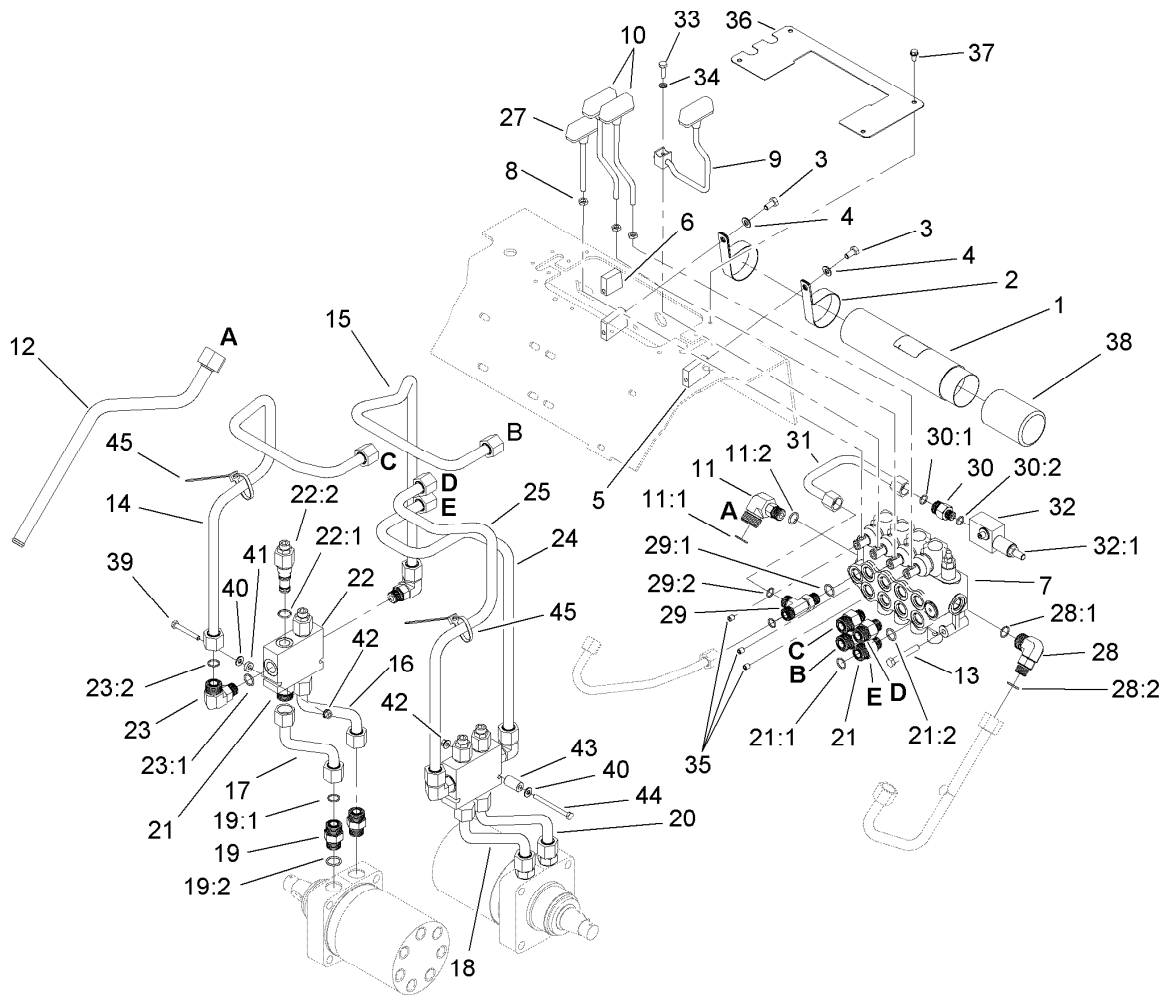
## Hydraulic Selector Valve Assembly No. 99-3072

<i>Ref.</i>	<i>Part Number</i>	<i>Qty.</i>	<i>Description</i>
3	99-4391	1	Seal Kit
3:1	99-3074	1	Gasket
3:2	99-3075	3	Gasket



## Auxiliary Hydraulic Valve Assembly No. 99-3077

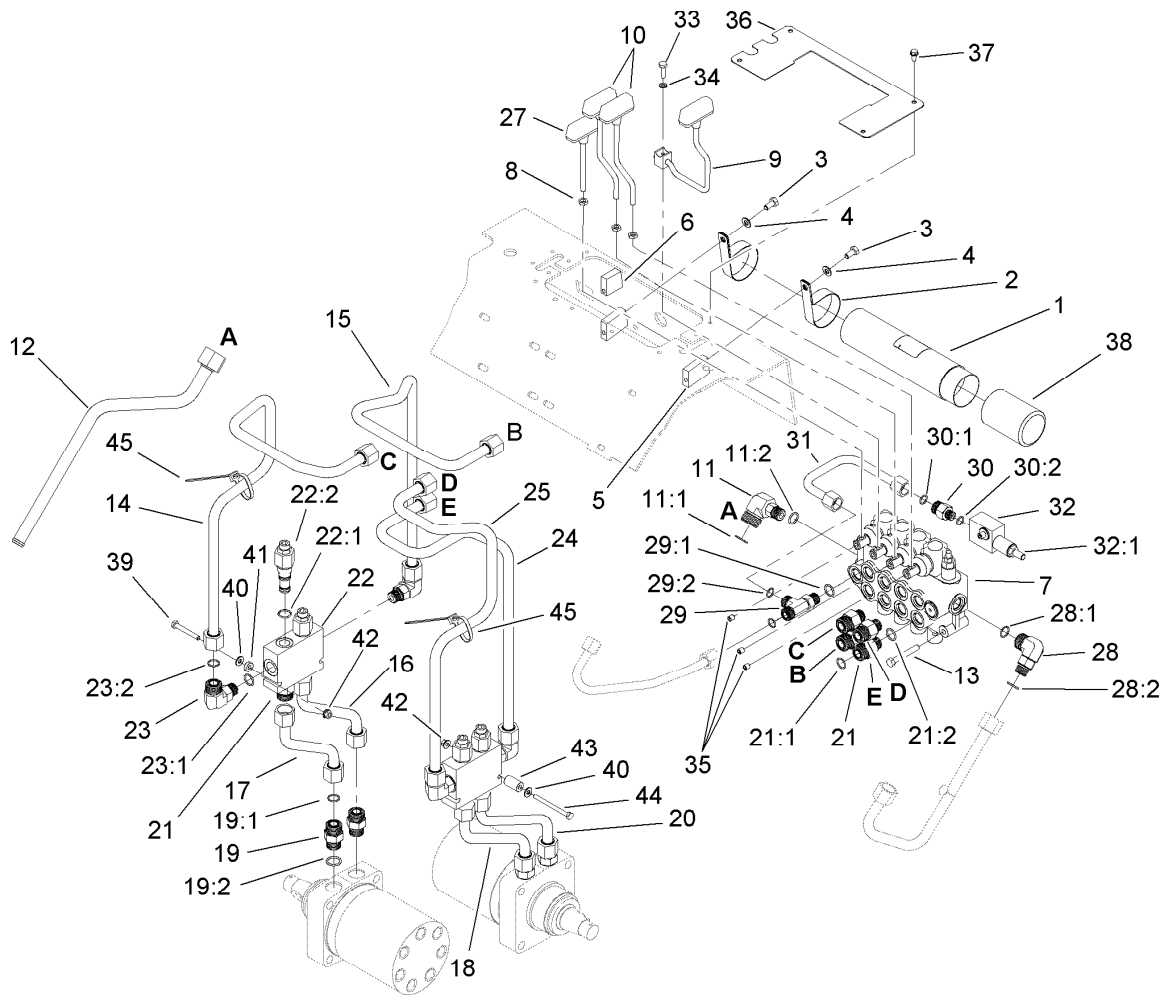
<i>Ref.</i>	<i>Part Number</i>	<i>Qty.</i>	<i>Description</i>
3	99-4391	1	Seal Kit
3:1	99-3074	1	Gasket
3:2	99-3075	3	Gasket



## Hydraulic Traction Assembly

Ref.	Part Number	Qty.	Description	Ref.	Part Number	Qty.	Description
1	104-7050	1	Tube-Manual	21:1	237-79	1	O-Ring
2	2412-133	2	R-Clamp	21:2	237-151	1	O-Ring
3	322-2	3	Screw-HH	22	98-9050	2	Valve-Counterbalance
4	33094-00	5	Washer-Plain	22:1	105-4099	1	Seal Kit
5	108-4728	2	Spacer	22:2	99-3271	2	Valve-Cartridge
6	105-7870	1	Spacer-Upper	23	340-153	4	Fitting-Elbow, 90 DEG
7	105-6246	1	Valve-Four Spool (W/ Relief Port)	23:1	237-79	1	O-Ring
8	33014-00	3	Nut-Hex	23:2	237-151	1	O-Ring
9	106-8165	1	Control Lever ASM	24	105-7875	1	Tube-HYD (Left A)
10	104-5733	2	Drive Lever ASM	25	105-7874	1	Tube-HYD (Left B)
11	92-5696	1	Fitting-HYD, 90 DEG	27	105-7881	1	Cylinder Lever ASM
11:1	237-58	1	O-Ring	28	340-153	1	Fitting-Elbow, 90 DEG
11:2	237-79	1	O-Ring	28:1	237-79	1	O-Ring
12	106-8177	1	Tube-Tank, HYD	28:2	237-151	1	O-Ring
13	322-11	3	Screw-HH	29	340-109	1	Fitting-HYD, Tee
14	105-7877	1	Tube-HYD (Right B)	29:1	237-79	1	O-Ring
15	105-7876	1	Tube-HYD (Right A)	29:2	237-30	2	O-Ring
16	98-4740	1	Tube-HYD	30	340-5	1	Fitting-Straight
17	98-4741	1	Tube-HYD	30:1	237-42	1	O-Ring
18	98-4743	1	Tube-HYD	30:2	237-30	1	O-Ring
19	340-7	4	Adapter	31	108-4717	1	HYD Tube ASM
19:1	237-65	1	O-Ring	32	105-7882	1	Relief Valve ASM
19:2	237-80	1	O-Ring	32:1	105-8358	1	Cartridge-Valve, Relief
20	98-4742	1	Tube-HYD	32:2	105-8357	1	Seal Kit ●
21	340-155	8	Fitting-HYD, Straight	33	321-5	1	Screw-HH
				34	3253-3	1	Washer-Lock

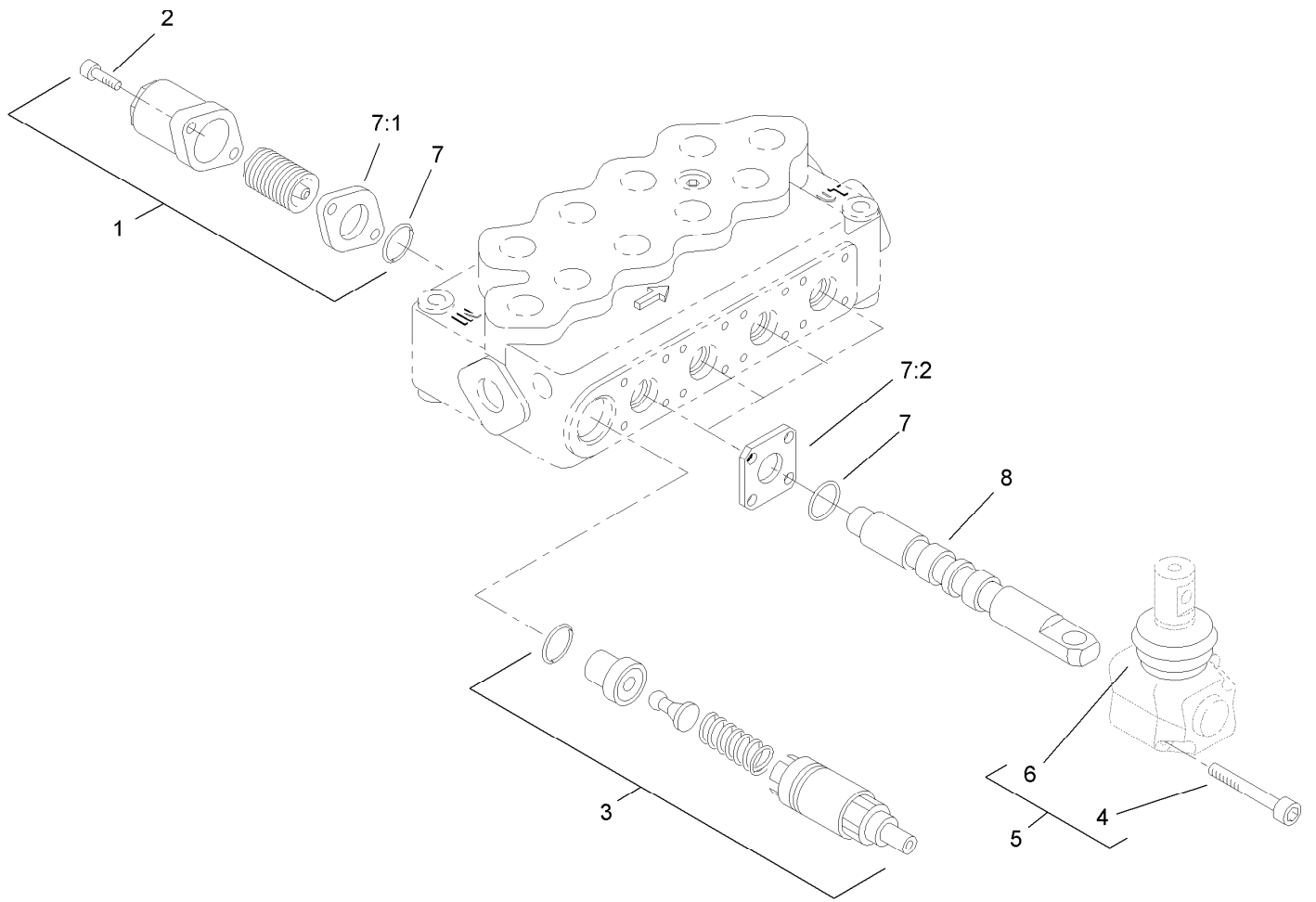
● Not illustrated



## Hydraulic Traction Assembly (continued)

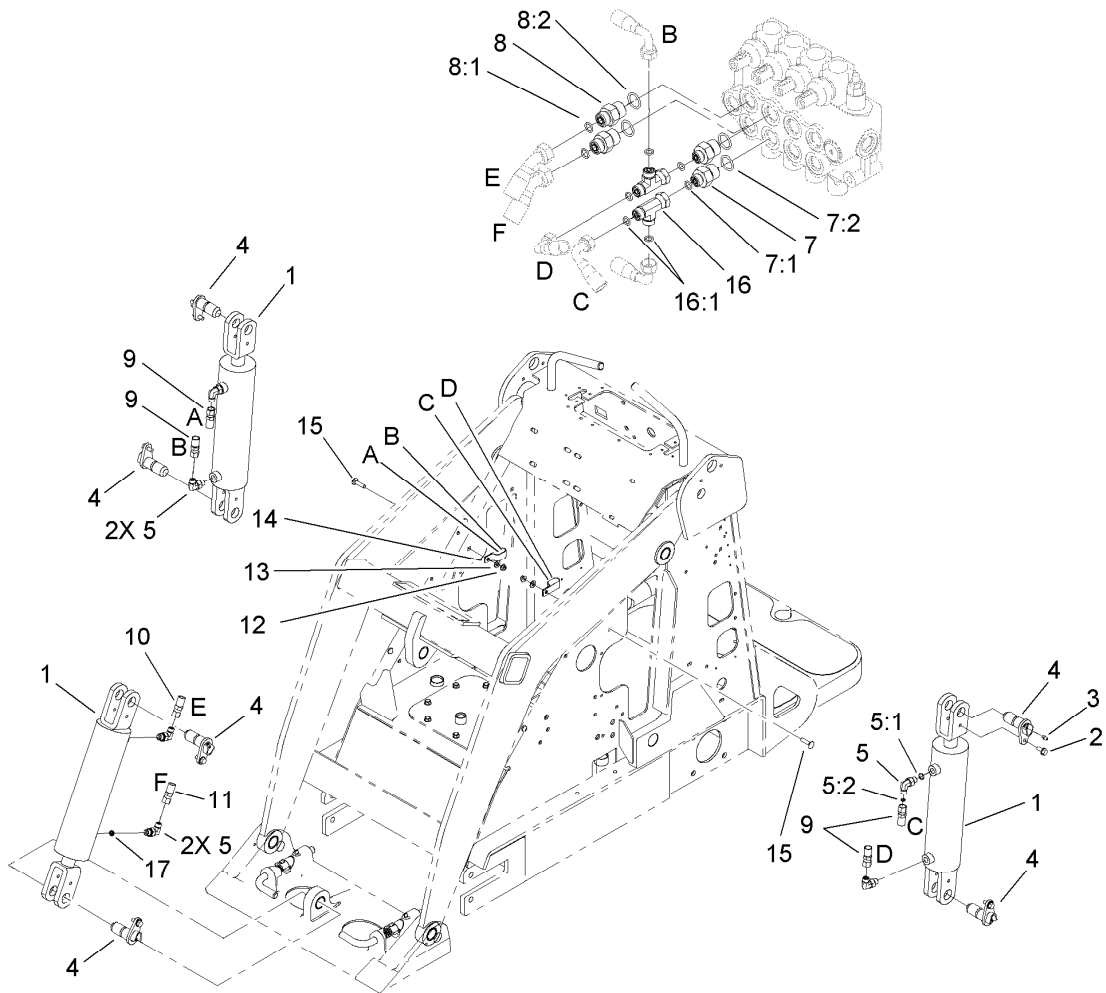
<i>Ref.</i>	<i>Part Number</i>	<i>Qty.</i>	<i>Description</i>	<i>Ref.</i>	<i>Part Number</i>	<i>Qty.</i>	<i>Description</i>
35	105-4068	3	Screw-Set, HSH	41	106-8189	1	Spacer
36	108-9731-03	1	Plate-Cover	42	32128-32	2	Nut-HHF
37	32144-4	4	Screw-HWH	43	106-8188	1	Spacer
38	104-7048	1	Cap-Housing	44	321-23	1	Screw-HH
39	321-11	1	Screw-HH	45	3290-379	2	Tie-Cable
40	3256-22	2	Washer-Flat				

● Not illustrated



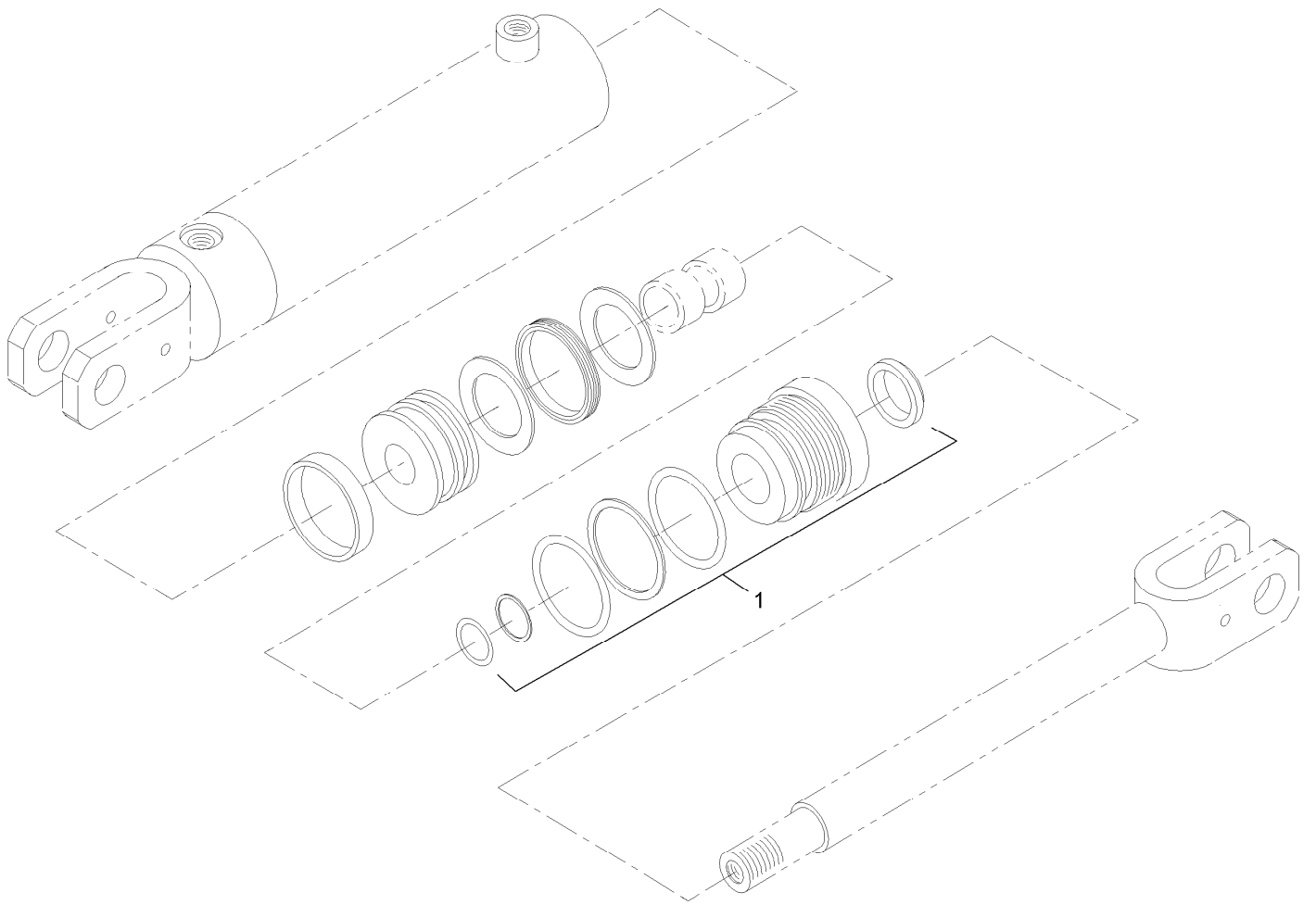
## Hydraulic Valve Assembly No. 105-6246

<i>Ref.</i>	<i>Part Number</i>	<i>Qty.</i>	<i>Description</i>
1	100-8801	4	High Force Spring Kit
1	100-8800	4	Standard Spring ASM
2	100-8802	8	Screw-Cap, End
3	100-8805	1	Valve-Relief
4	100-8806	8	Screw
5	100-8807	4	Operator ASM
6	100-8829	4	Boot
7	99-4390	1	Seal Kit
7:1	99-3074	4	Gasket
7:2	99-3075	8	Gasket
8	105-8441	4	Spool-Valve



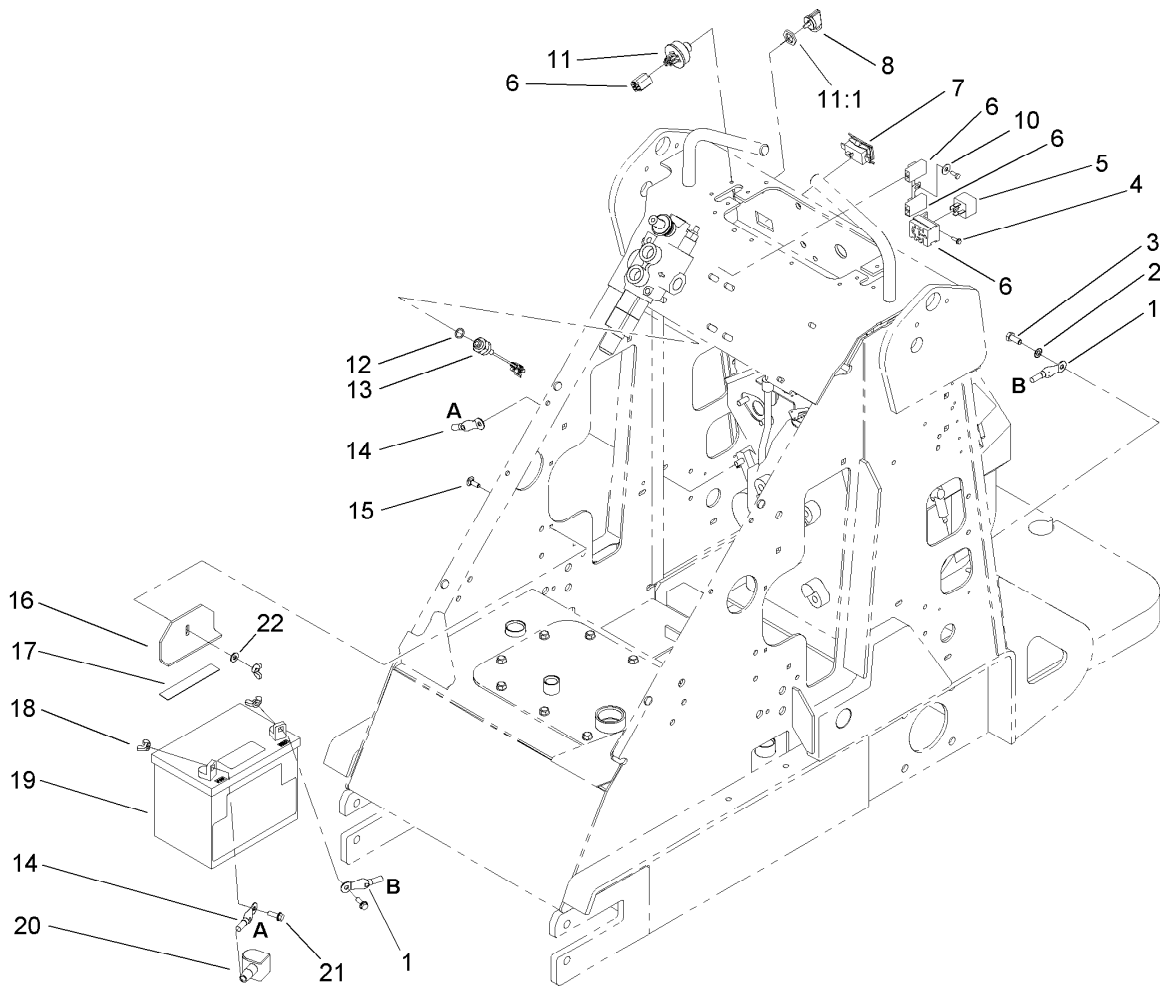
## Hydraulic Cylinder Assembly

Ref.	Part Number	Qty.	Description
1	105-7867	3	Cylinder-HYD
2	99-5105	6	Bolt-Shoulder
3	302-5	6	Fitting-Grease
4	112-2609	6	Pivot Pin ASM
5	340-82	6	Adapter
5:1	237-42	1	O-Ring
5:2	237-21	1	O-Ring
7	340-133	2	Adapter
7:1	237-79	1	O-Ring
7:2	237-21	1	O-Ring
8	340-3	2	Adapter
8:1	237-22	1	O-Ring
8:2	237-79	1	O-Ring
9	98-4725	4	Hose-HYD
10	98-4727	1	Hose-HYD
11	98-4726	1	Hose-HYD
12	3296-29	2	Nut-Lock, NI
13	3256-23	2	Washer-Flat
14	2412-137	2	Clamp-R, Double
15	3230-3	2	Screw-CARR
16	340-151	2	Fitting
16:1	237-75	3	O-Ring
17	108-4714	1	Orifice-Port Insert, One Way



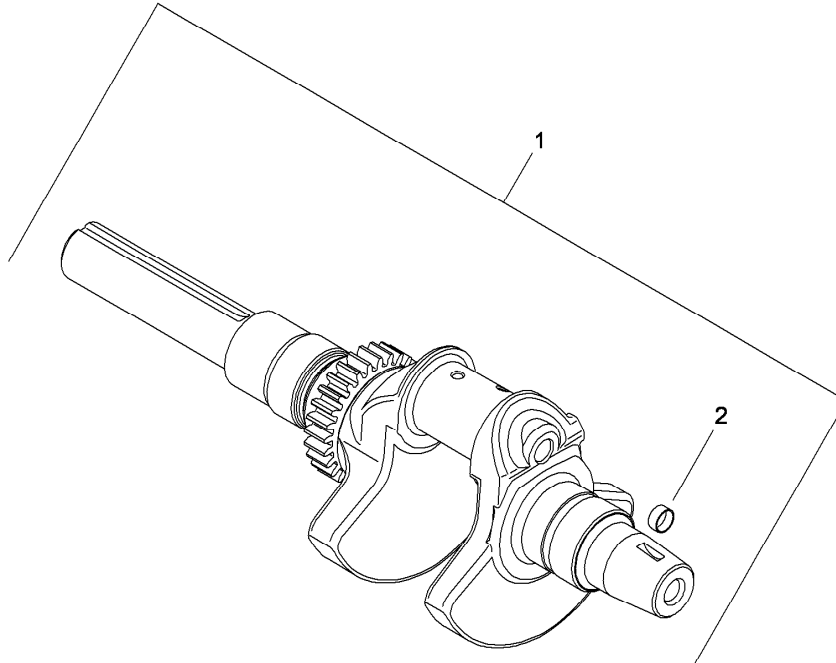
## Hydraulic Cylinder Assembly No. 105-7867

<i>Ref.</i>	<i>Part Number</i>	<i>Qty.</i>	<i>Description</i>
1	105-8356	1	Seal Kit



## Electrical Assembly

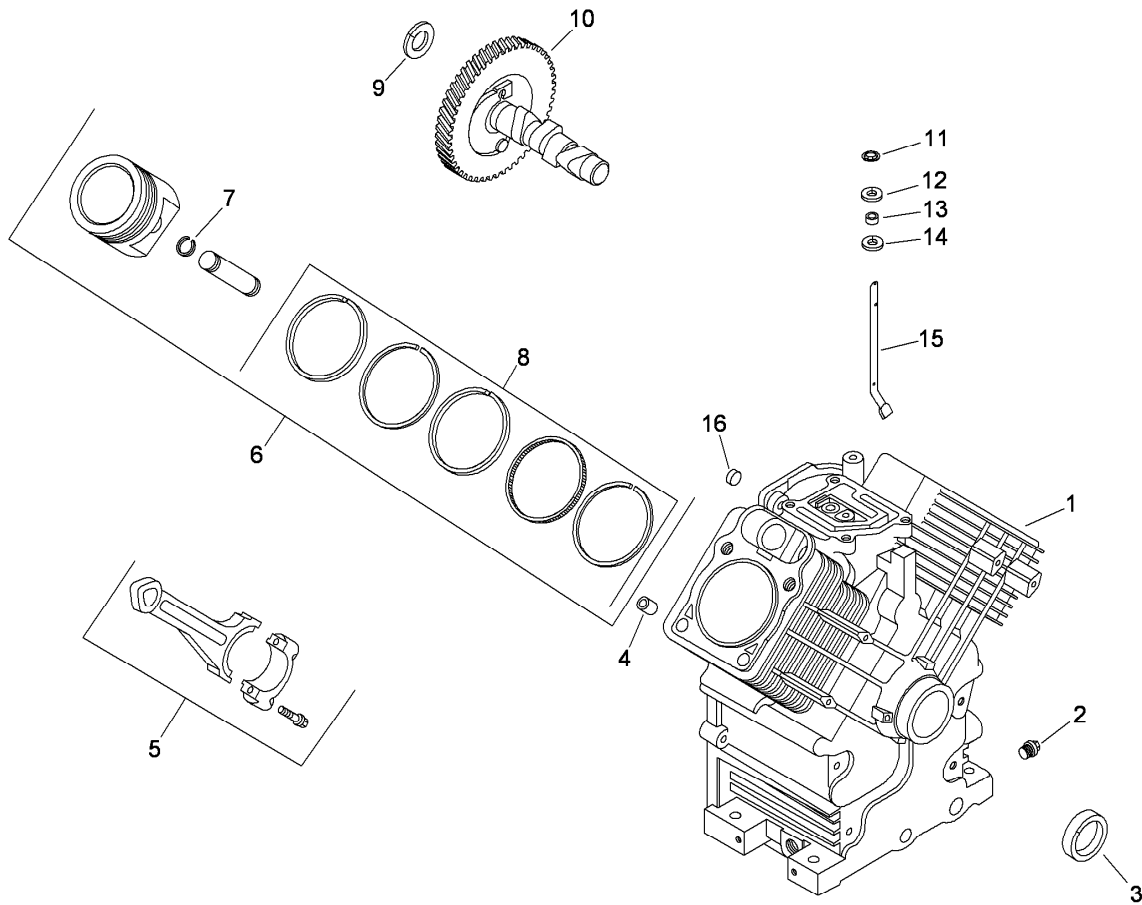
<i>Ref.</i>	<i>Part Number</i>	<i>Qty.</i>	<i>Description</i>
1	111074	1	Cable-Black
2	3255-8	1	Washer-Lock
3	33114-020	1	Screw-HH
4	32144-87	2	Screw-HWHTF
5	98-7249	1	Relay
6	98-4650	1	Harness-Electrical
7	106-8175	1	Meter-Hour
8	63-8360	2	Key-Ignition
10	3256-49	1	Washer-Flat
11	116338	1	Key Switch ASM
11:1	101884	1	Nut
12	237-42	1	O-Ring
13	72-4310	1	Switch-Ball
14	92-6989	1	Wire-21 Inch
15	3229-2	1	Screw-CARR
16	105-8401-03	1	Clamp-Battery
17	94-9566	1	Pad-Foostrest
18	32103-22	3	Nut-Wing
19	104-2492	1	Battery
20	77-0981	1	Boot-Terminal, Red
21	3234-4	2	Screw-HHF
22	3256-22	1	Washer-Flat



## Crankshaft Assembly Kohler CH20S-64763

<i>Ref.</i>	<i>Part Number</i>	<i>Qty.</i>	<i>Description</i>
1	24 014 90-S	1	Crankshaft (Includes 2) ●
2	52 139 09-S	1	Plug-Cup ●

● Obtain parts from [www.kohlerplus.com](http://www.kohlerplus.com)

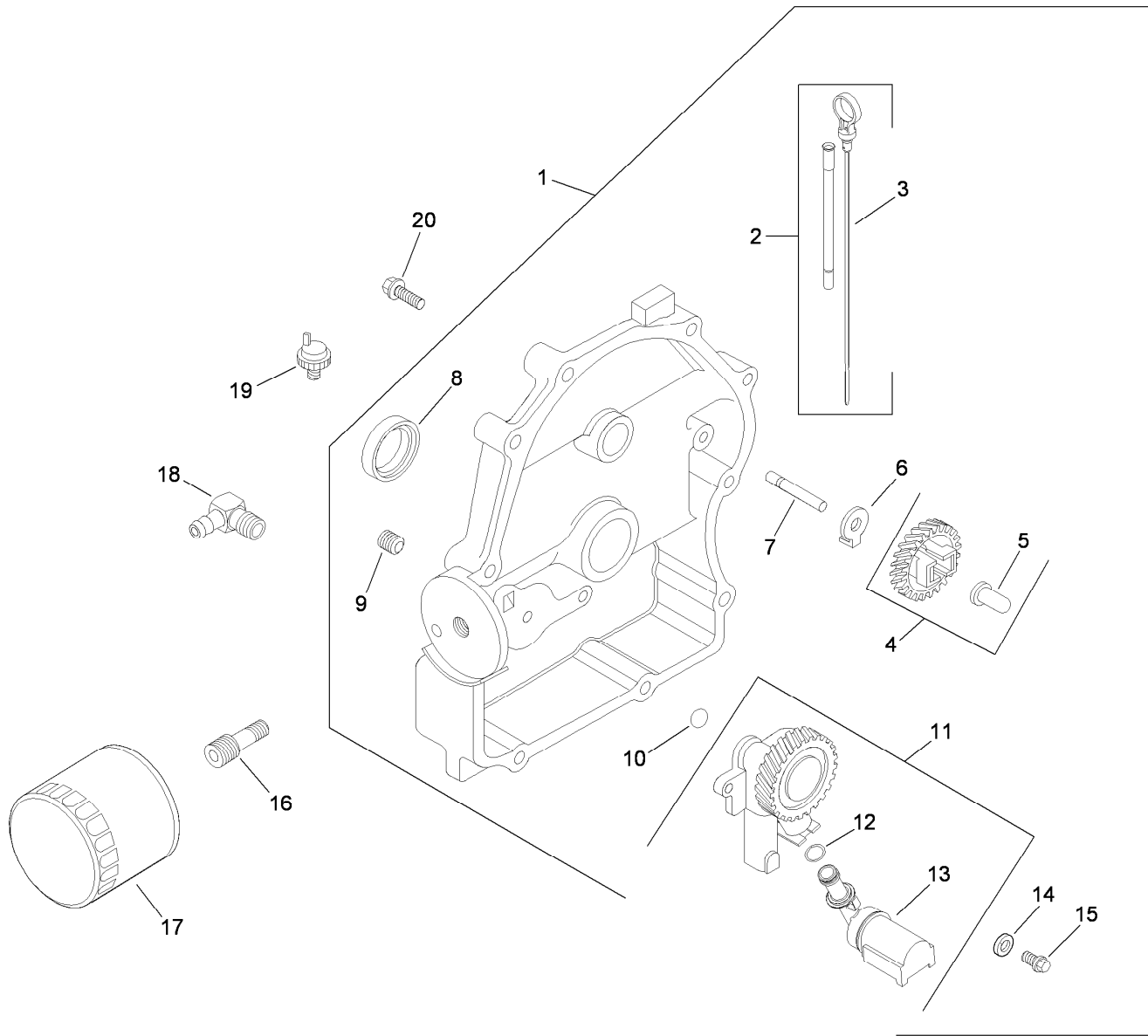


## Crankcase Assembly Kohler CH20S-64763

Ref.	Part Number	Qty.	Description	Ref.	Part Number	Qty.	Description
1	24 522 181	1	Block-Cylinder (Short Block Replacement) ■	9	12 422 13-S	1	Shim-Camshaft (Black .04) ■
1	24 782 15	1	Block-Cylinder (Miniblock Replacement) ■	9	12 422 07-S	1	Shim-Camshaft (White .028) ■
2	52 139 02-S	2	Plug-Pipe Head, 3/8 ■	9	12 422 08-S	1	Shim-Camshaft (Blue .03) ■
3	24 032 19-S	1	Seal-Oil (Helix Lip) ■	9	12 422 10-S	1	Shim-Camshaft (Yellow .034) ■
4	24 380 16-S	6	Pin-Locating ■	9	12 422 11-S	1	Shim-Camshaft (Green .036) ■
5	24 067 24-S	2	Rod-Connecting (STD) ■	9	12 422 12-S	1	Shim-Camshaft (Gray .038) ■
5	24 067 25-S	2	Rod-Connecting (.25) ■	10	24 012 10-S	1	Camshaft Kit ■
6	24 874 38-S	2	Piston ASM (Std) ■	11	24 018 09-S	1	Retainer-Ring ■
6	24 874 39-S	2	Piston ASM (.08) ■	12	M-931010-S	1	Washer-Flat (9Mm) ■
7	24 874 40-S	2	Piston ASM (.25) ■	13	28 032 09-S	1	Seal-Cross Shaft, Governor ■
7	24 874 41-S	2	Piston ASM (.50) ■	14	24 468 15-S	1	Washer-Flat (11/32) ■
7	24 018 01-S	4	Retainer-Pin, Piston ■	15	24 144 38-S	1	Shaft-Cross, Governor ■
8	24 108 22-S	2	Ring Set (STD) ■	16	52 139 09-S	1	Plug-Cup ■
8	24 108 23-S	2	Ring Set (.08) ■		25 357 14-S	1	Lubricant-Camshaft ● ■
8	24 108 24-S	2	Ring Set (.25) ■				
8	24 108 25-S	2	Ring Set (.50) ■				
9	12 422 09-S	1	Shim-Camshaft (Red .032) ■				

● Not illustrated

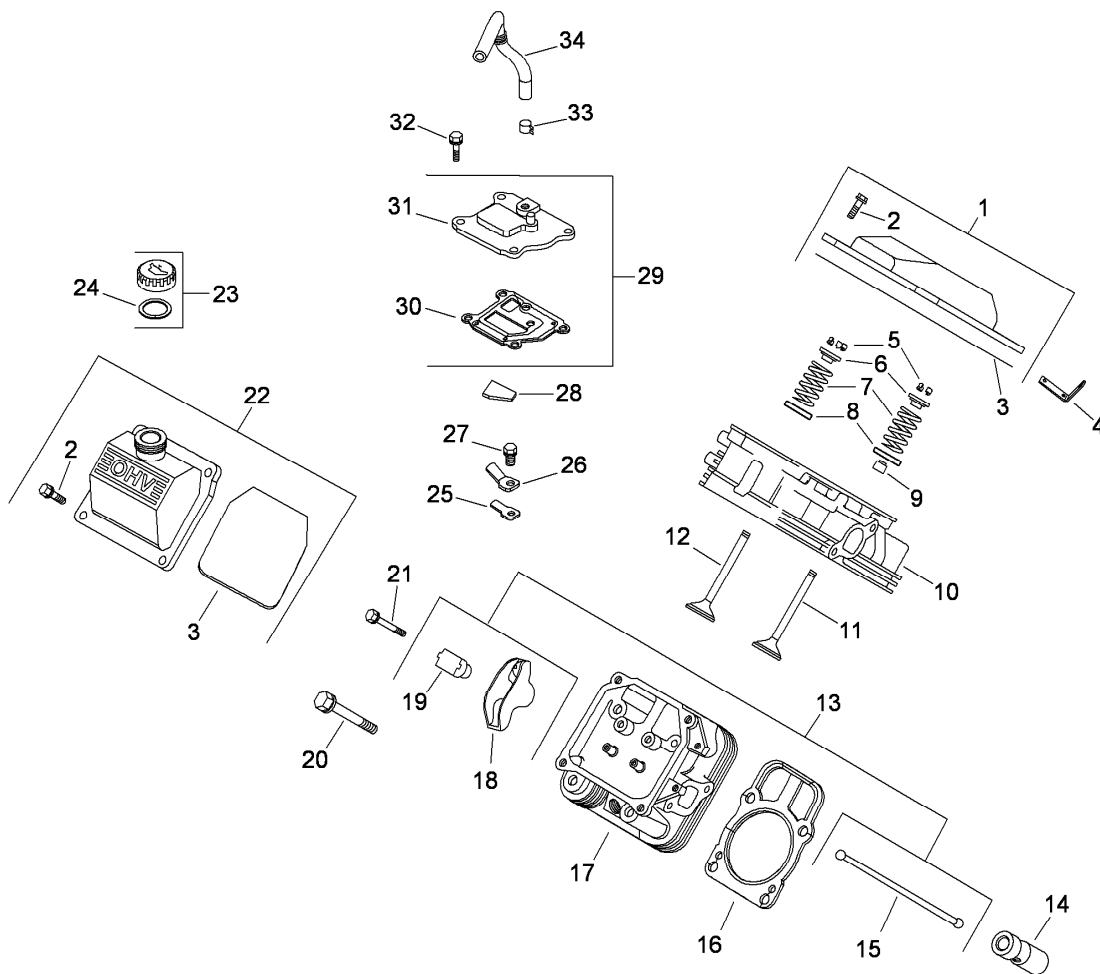
■ Obtain parts from [www.kohlerplus.com](http://www.kohlerplus.com)



## Oil Pan and Lubrication Assembly Kohler CH20S-64763

Ref.	Part Number	Qty.	Description	Ref.	Part Number	Qty.	Description
1	24 009 150-S	1	Closure Plate ASM (Includes 2-15) ●	11	24 393 51-S	1	Oil Pump ASM (Includes 12, 13) ●
2	24 755 121-S	1	Dipstick Tube ASM (Includes 3) ●	12	24 153 01-S	1	O-Ring (Oil Pick Up) ●
3	24 038 10-S	1	Dipstick ●	13	24 381 04-S	1	Tube-Pick Up, Oil ●
4	24 043 12-S	1	Governor Gear Kit (Includes 5) ●	14	M-631005-S	2	Washer-Flat (6 Mm) ●
5	12 380 01-S	1	Pin-Regulating, Governor ●	15	M-645025-S	2	Screw-Flange, Thread Forming (M6X1.0X25) ●
6	24 448 02-S	1	Tab-Locking ●	16	24 136 01-S	1	Nipple-Filter, Oil ●
7	12 144 02-S	1	Shaft-Gear, Governor ●	17	52 050 02-S	1	Filter-Oil ●
8	25 032 06-S	1	Seal-Oil (PTO End) ●	18	25 155 02-S	1	Connector-Hose, 90 Deg ●
9	25 139 60-S	1	Plug-Pipe, Countersunk (1/8) ●	19	24 099 03-S	1	Switch-Pressure, Oil ●
10	24 153 08-S	1	O-Ring ●	20	24 086 17-S	10	Screw-Flange (M8X1.25X45) ●

● Obtain parts from [www.kohlerplus.com](http://www.kohlerplus.com)

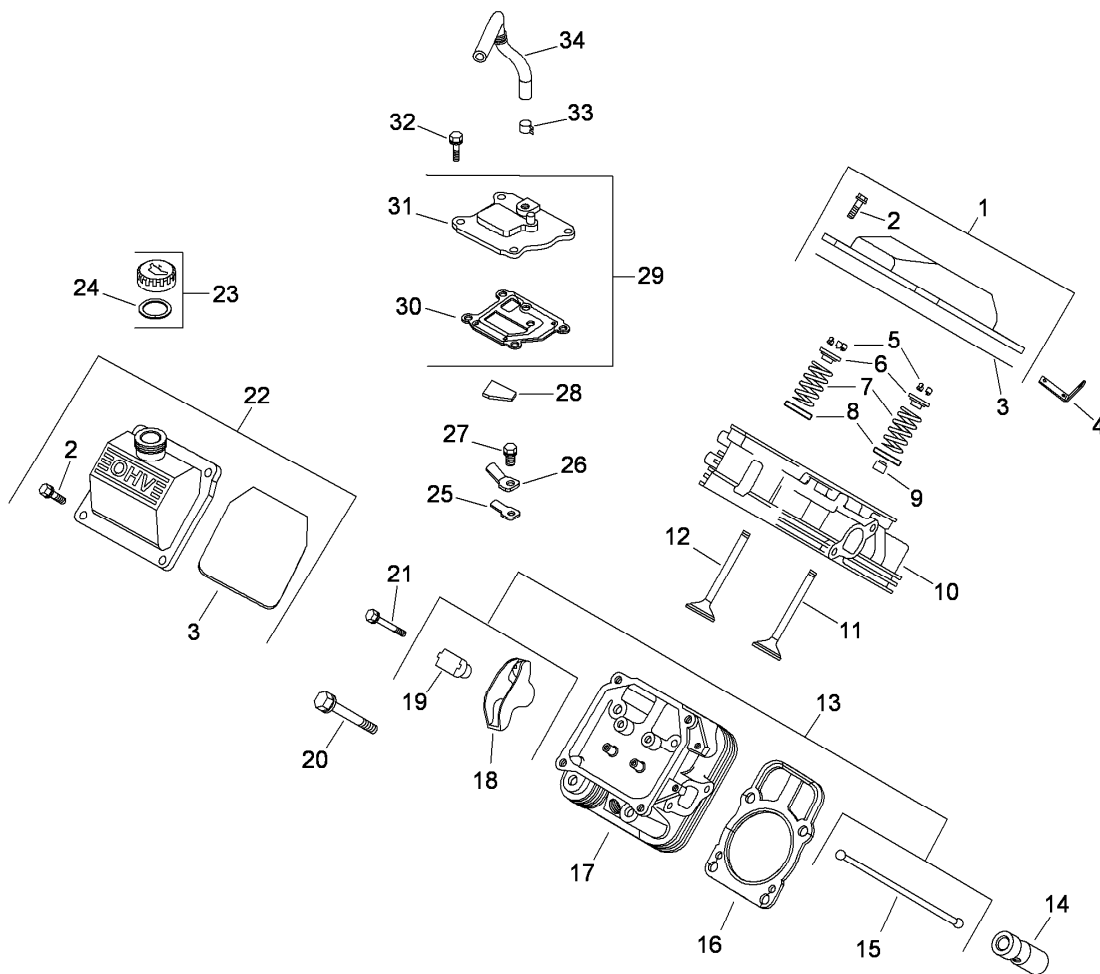


## Head, Valve and Breather Assembly Kohler CH20S-64763

Ref.	Part Number	Qty.	Description	Ref.	Part Number	Qty.	Description
1	24 755 141-S	1	Plain Valve Cover ASM (Includes 2, 3) ■	17	24 318 115-S	1	No. 2 Cylinder Head ASM (Includes Stud) ■
2	M-651030-S	8	Screw-Flange (M6X1.0X30) ■	18	25 186 01-S	4	Arm-Rocker ■
3	24 153 30-S	2	O-Ring (Valve Cover) ■	19	24 599 02-S	4	Pivot-Arm, Rocker ■
4	25 445 01-S	1	Strap-Lifting ■	20	12 086 16-S	8	Screw-Flange (M10X1.5X90) ■
5	12 755 03-S	4	Retainer Kit ■	21	M-640034-S	4	Screw-Flange (M6X1.0X34) ■
6	12 173 01-S	4	Cap-Spring, Valve ■	22	24 755 140-S	1	Valve Cover Oil Fill ASM (Includes 2, 3) ■
7	24 089 02-S	4	Spring-Valve ■	23	24 755 46-S	1	Oil Fill Cap ASM (Yellow) (Includes 24) ■
8	235011-S	4	Retainer-Spring ■	24	25 153 02-S	1	O-Ring (Dipstick) ■
9	66 032 05-S	2	Seal-Stem, Valve ■	25	24 402 03-S	1	Reed-Breather ■
10	24 318 68-S	1	No. 1 Cylinder Head ASM ■	26	66 018 04-S	1	Retainer-Reed ■
11	24 017 01-S	2	Valve-Intake (STD) ■	27	M-545010-S	1	Screw-HHFTF (M5X.80X10) ■
11	24 017 02-S	2	Valve-Intake (.25) ■	28	24 050 11-S	1	Filter-Breather ■
12	24 016 01-S	2	Valve-Exhaust (STD) ■	29	24 033 01-S	1	Breather ASM (Includes 30, 31) ■
12	24 016 02-S	2	Valve-Exhaust (.25) ■	30	24 041 51-S	1	Gasket-Breather ■
13	24 755 66-S	1	Valve Train Kit (Includes 15, 18, 19) ■	31	24 096 86-S	1	Cover-Breather ■
14	25 351 04-S	4	Lifter-Valve (Includes Camshaft Lubricant) ■	32	M-645020-S	4	Screw-HHFTF (M6X1.0X20) ■
15	24 411 05-S	4	Rod-Push ■				
16	24 841 01-S	2	Cylinder Head Gasket Kit (Includes Gaskets, Nut And O-Ring) ■				

● Not illustrated

■ Obtain parts from [www.kohlerplus.com](http://www.kohlerplus.com)

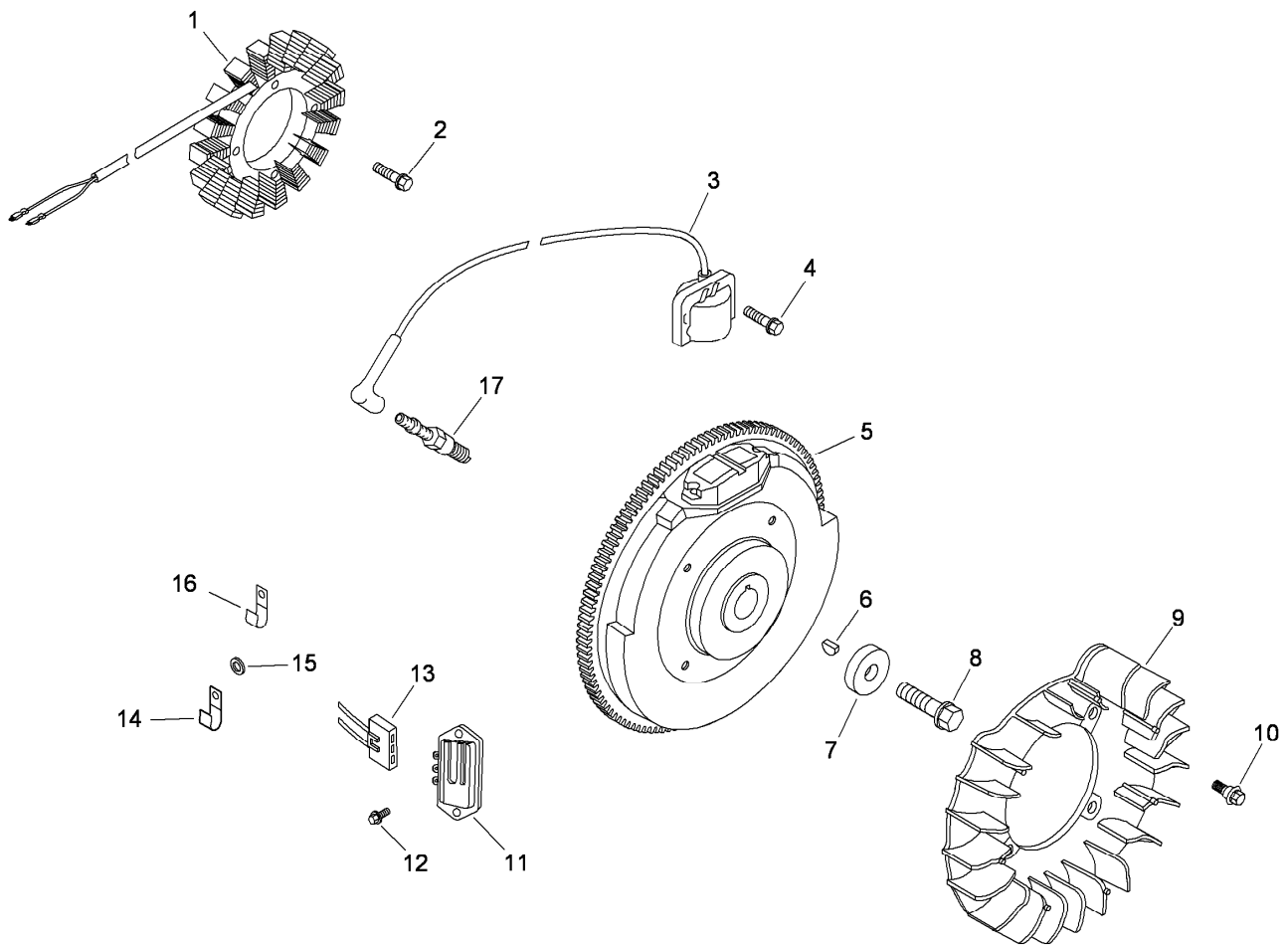


## Head, Valve and Breather Assembly Kohler CH20S-64763 (continued)

<i>Ref.</i>	<i>Part Number</i>	<i>Qty.</i>	<i>Description</i>	<i>Ref.</i>	<i>Part Number</i>	<i>Qty.</i>	<i>Description</i>
33	25 237 14-S	1	Clamp-Hose, Spring (1/2) ■	25	072 04-S	2	Stud (M8X1.25X33) ● ■
34	24 326 89-S	1	Hose-Breather ■	24	041 01-S	1	Gasket-Manifold, Intake ● ■
	M-545016-S	2	Screw-Flange, Thread Forming (M5X0.8X16) ● ■	24	041 49-S	1	Gasket-Exhaust ● ■
	M-545020-S	2	Screw-Flange, Thread Forming (M5X.8X20) ● ■	24	100 10-S	1	Nut-Flange (M8X1.25) ● ■
	24 755 147-S	2	Cylinder Head Hardware Kit (Includes 5-9,11,12,15,18,19, 21) ● ■	24	153 27-S	1	O-Ring (Intake Port) ● ■
				25	357 14-S	1	Lubricant-Camshaft ● ■

● Not illustrated

■ Obtain parts from [www.kohlerplus.com](http://www.kohlerplus.com)

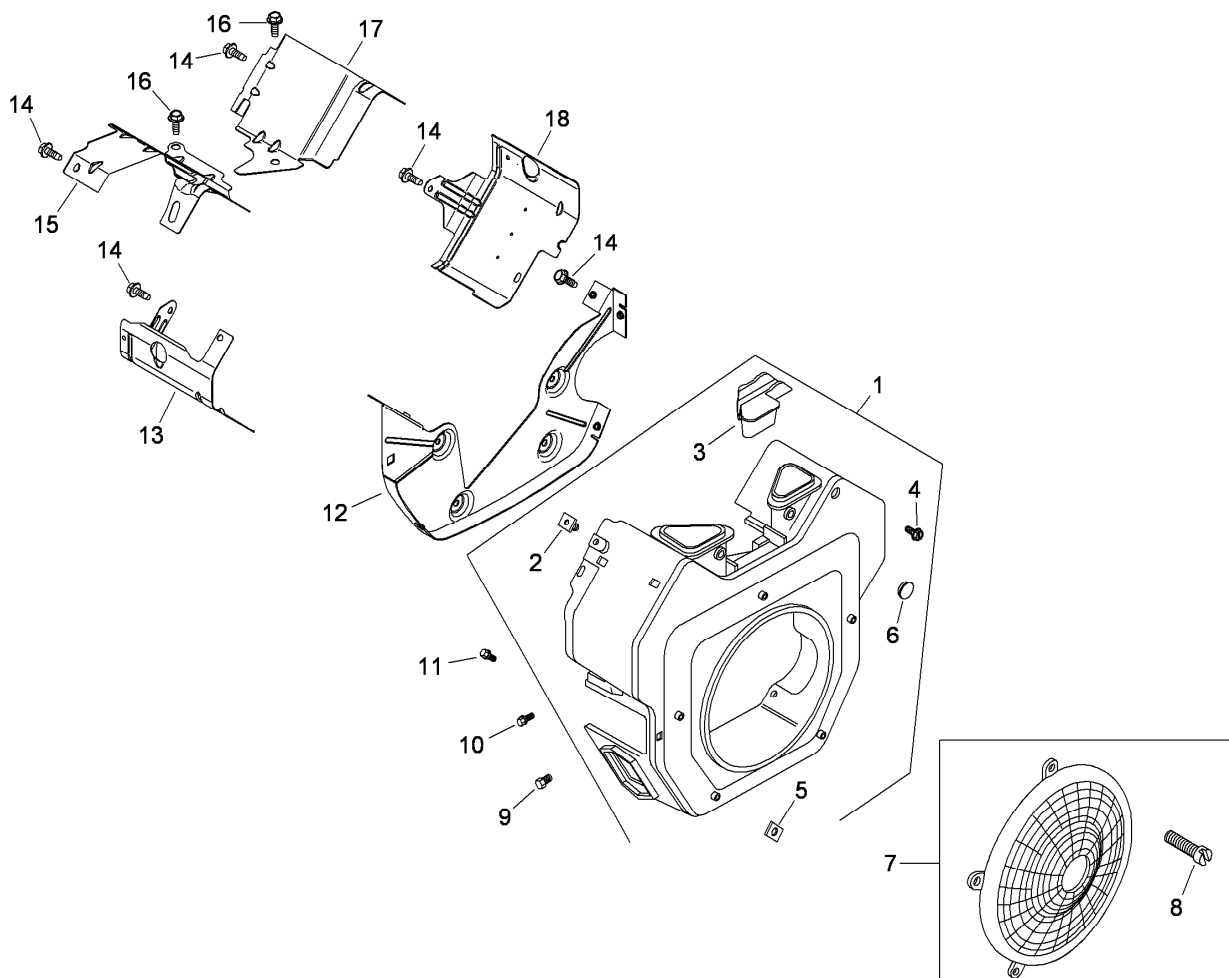


## Ignition and Electrical Assembly Kohler CH20S-64763

Ref.	Part Number	Qty.	Description
1	237878-S	1	Stator Kit (15 Amp) (Includeterminal) ■
2	M-548025-S	2	Screw-Thread Forming (M5X0.8X25) ■
3	24 584 45-S	2	Module-Ignition (C D I Fixed) ■
4	M-545020-S	4	Screw-Flange, Thread Forming (M5X.8X20) ■
5	24 025 55-S	1	Flywheel ASM ■
6	X-42-15-S	1	Key (3/16 X 5/8) ■
7	12 468 03-S	1	Washer-Flat (13/32) ■
8	12 086 14-S	1	Screw-Flange (M10X1.5X45) ■
9	24 157 11-S	1	Fan ■
10	25 086 47-S	4	Bolt-Shoulder (M6X1.0X16) ■
11	41 403 09-S	1	Rectifier-Regulator ■
12	25 086 157-S	2	Screw-Hex Flange, Hi-Lo ■
13	236602-S	1	Connector (3 Contact) ■
14	235173-S	1	Clip-Cable ■
15	X-25-63-S	1	Washer-Flat (1/4) ■
16	210281-S	1	Clip ■
17	25 132 12-S	2	Spark Plug (Pro Series) ■
	24 126 137-S	1	Bracket-Strap, Ground ● ■
	24 176 08-S	1	Harness-Wiring ● ■
	25 086 91-S	2	Screw-Wsh HD Tap (8-18X.50) ● ■
	25 454 07-S	2	Tie-Wire ● ■
	25 452 01-S	2	Terminal ● ■

● Not illustrated

■ Obtain parts from [www.kohlerplus.com](http://www.kohlerplus.com)

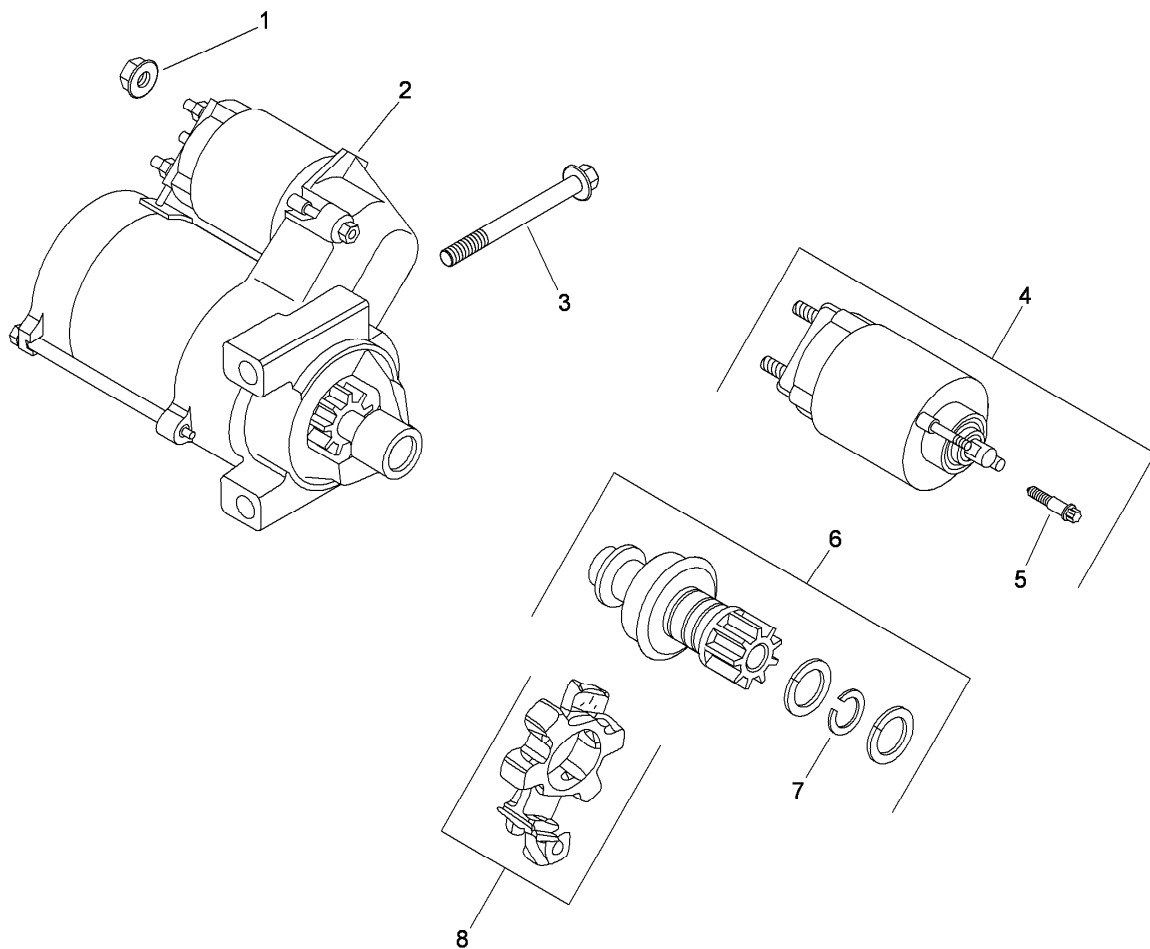


## Blower Housing and Baffle Assembly Kohler CH20S-64763

Ref.	Part Number	Qty.	Description
1	24 027 196-S	1	Blower Housing ASM (Includes 2-6) ■
2	24 100 02-S	1	Nut-Plastic ■
3	24 096 85-S	1	Cover-Housing, Blower ■
4	25 139 16-S	1	Plug-Button (9/16) ■
5	24 100 01-S	2	Nut-Plastic ■
6	25 086 91-S	1	Screw-Wsh HD Tap (8-18X.50) ■
7	24 755 81-S	1	Fixed Guard Kit (Includes 8) ■
8	25 086 160-S	5	Screw-Sems ■
9	M-561016-S	1	Screw-Flange, Thread Forming (M5X.80X16) ■
10	M-545016-S	3	Screw-Flange, Thread Forming (M5X0.8X16) ■
11	M-545020-S	4	Screw-Flange, Thread Forming (M5X.8X20) ■
12	24 146 55-S	1	Plate-Backing ■
13	24 063 88-S	1	Baffle-Barrel, Cylinder (No. 2 Side) ■
14	M-645016-S	6	Screw-Flange, Thread Forming (M6X1.0X16) ■
15	24 063 70-S	1	Baffle-Valley (No. 2 Side) ■
16	M-545010-S	2	Screw-HHFTF (M5X.80X10) ■
17	24 063 59-S	1	Baffle-Valley (No. 1 Side) ■
18	24 063 85-S	1	Barrel-Cylinder (No.1 Side) ■
	25 154 11-S	1	Clip-Repair (Speed Nut) ● ■
	24 332 01-S	5	Insert-Threaded ● ■

● Not illustrated

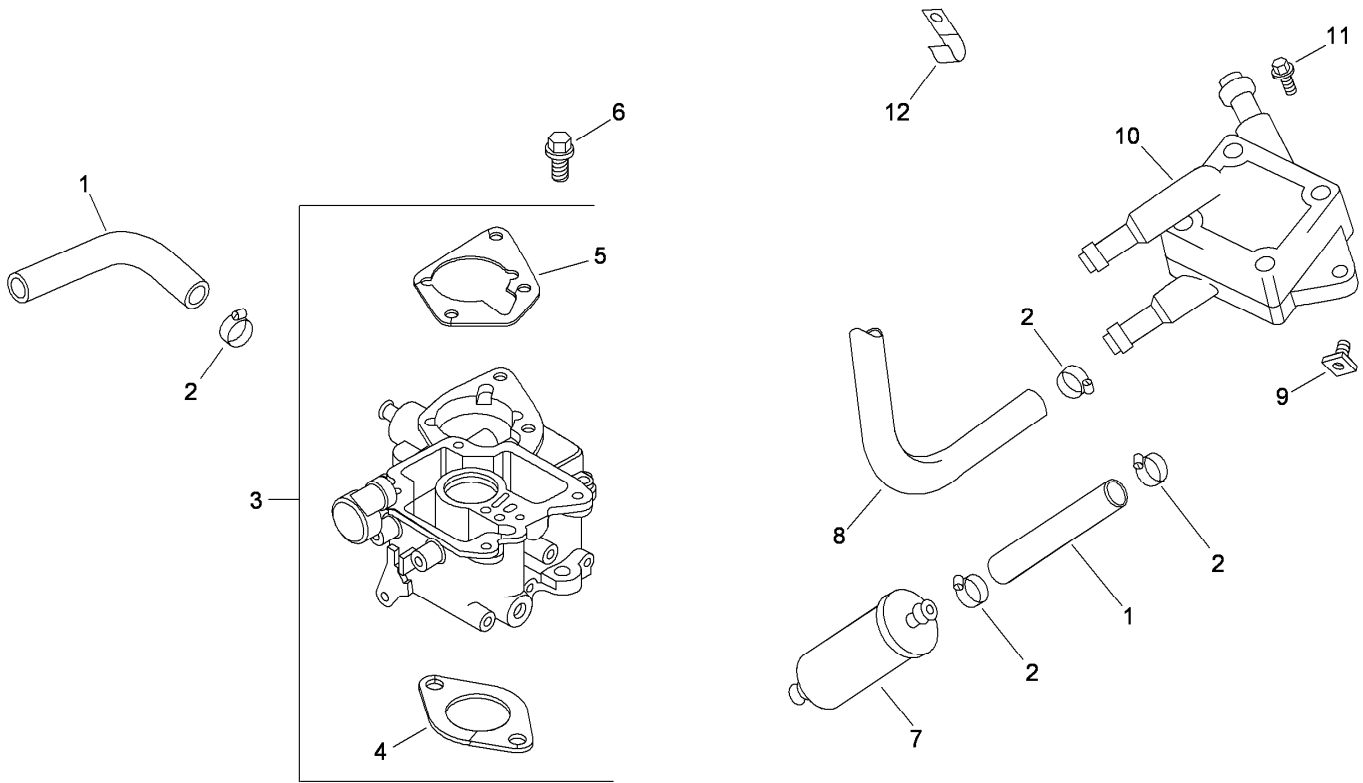
■ Obtain parts from [www.kohlerplus.com](http://www.kohlerplus.com)



## Starting System Assembly Kohler CH20S-64763

<b>Ref.</b>	<b>Part Number</b>	<b>Qty.</b>	<b>Description</b>
1	M-841080-S	1	Nut-Flange (M8X1.25) ●
2	25 098 09-S	1	Starter ASM (Solenoid Shift) ●
3	M-839080-S	2	Screw-Flg (M8X1.25X80) ●
4	25 435 06-S	1	Solenoid Kit (Includes 5) ●
5	25 086 113-S	3	Screw-Torx Head, External ●
6	25 755 33-S	1	Pinion Drive Kit (Includes 7) ●
7	25 141 05-S	1	Ring-Retaining ●
8	25 221 01-S	1	Brush Holder Kit ●

● Obtain parts from [www.kohlerplus.com](http://www.kohlerplus.com)

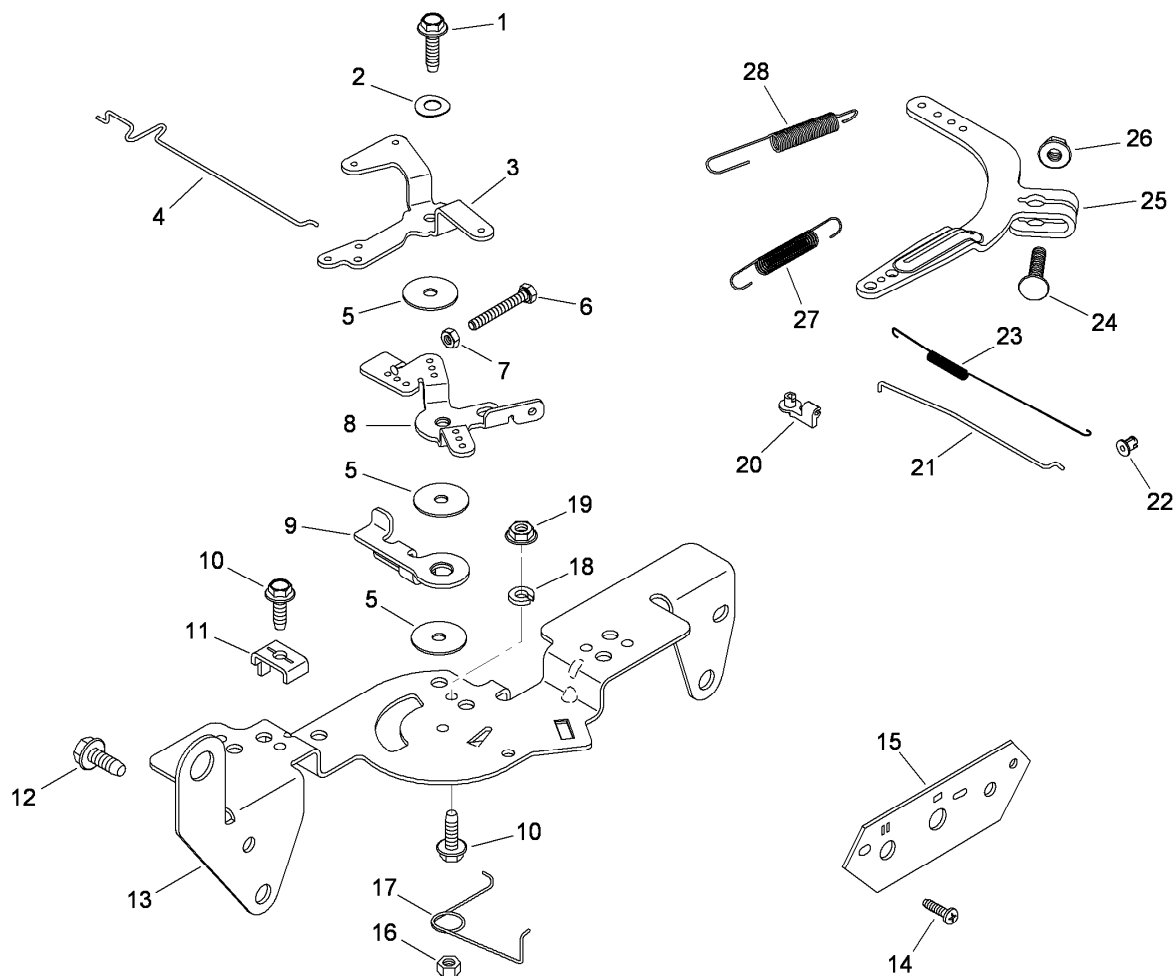


## Fuel System Assembly Kohler CH20S-64763

Ref.	Part Number	Qty.	Description
1	25 111 34-S	2	Line-Fuel (24.0 Cut To Length) ■
2	25 237 14-S	6	Clamp-Hose, Spring (1/2) ■
3	24 853 43-S	1	Carburetor Kit (Includes 4, 5) ■
4	24 041 17-S	1	Gasket-Carburetor ■
5	24 041 06-S	1	Gasket-Base, Air Cleaner ■
6	M-651030-S	2	Screw-Flange (M6X1.0X30) ■
7	24 050 13-S	1	Filter-Fuel ■
8	24 353 02-S	1	Line-Fuel, Flexible (15.5) ■
9	25 100 37-S	2	Nut-Plastic (Black) ■
10	24 393 16-S	1	Pump-Fuel ■
11	24 086 12-S	2	Screw-TAP (M6X1.7X18) ■
12	47 154 01-S	1	Clip-Cable ■
	25 086 158-S	1	Screw-Flanged, Thread Forming (M6X1.0X11) ● ■
	24 755 125-S	1	High Altitude Kit ● ■
	24 757 07-S	1	Choke Repair Kit ● ■
	24 757 02-S	1	Float Repair Kit ● ■
	24 757 01-S	1	Solenoid Repair Kit ● ■
	24 757 03-S	1	Carburetor Repair Kit ● ■

● Not illustrated

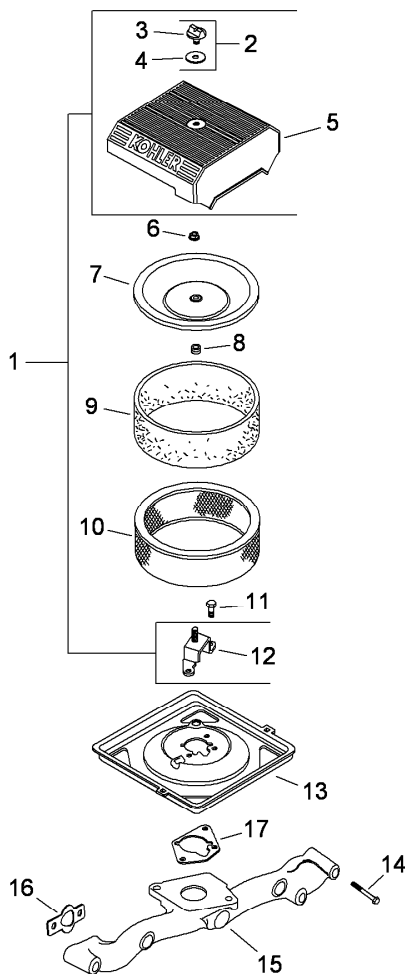
■ Obtain parts from [www.kohlerplus.com](http://www.kohlerplus.com)



## Engine Control Assembly Kohler CH20S-64763

Ref.	Part Number	Qty.	Description	Ref.	Part Number	Qty.	Description
1	M-545020-S	1	Screw-Flange, Thread Forming (M5X.8X20) ●	14	24 086 06-S	2	Screw-PPH (11-16X3/4) ●
2	41 468 03-S	1	Washer-Spring (1/4) ●	15	24 378 01-S	1	Panel-Control, Front ●
3	24 090 05-S	1	Lever-Choke ●	16	M-547050-S	1	Nut-Lock (M5X.8) ●
4	24 079 21-S	1	Linkage-Choke ●	17	24 089 03-S	1	Spring-Return, Choke ●
5	24 468 01-S	3	Washer-Flat (5.5Mm) ●	18	X-20-1-S	1	Washer-Lock (.25) ●
6	M-403025-S	1	Screw-Slotted Head (M4X0.7X25) ●	19	M-541050-S	1	Nut-HF (M5X0.8) ●
7	M-446030-S	1	Nut (M4X0.7) ●	20	25 158 11-S	1	Bushing-Retaining, Linkage ●
8	24 090 03-S	1	Lever-Control, Throttle ●	21	24 079 01-S	1	Linkage-Throttle ●
9	24 090 07-S	1	Lever-Actuator, Throttle ●	22	25 158 08-S	1	Bushing-Linkage, Throttle ●
10	M-545016-S	3	Screw-Flange, Thread Forming (M5X0.8X16) ●	23	24 089 01-S	1	Spring-Linkage ●
11	12 237 01-S	2	Clamp-Cable ●	24	24 211 03-S	1	Bolt-Sq Neck, Rd HD (M6X1.0X25) ●
12	M-645016-S	4	Screw-Flange, Thread Forming (M6X1.0X16) ●	25	24 090 51-S	1	Lever-Governor ●
13	24 126 56-S	1	Bracket-Control ●	26	M-641060-S	1	Nut-Flange (M6X1.0) ●
				27	24 089 46-S	1	Spring-Governor ●
				28	24 089 51-S	1	Spring-Limiter, Throttle ●

● Obtain parts from [www.kohlerplus.com](http://www.kohlerplus.com)

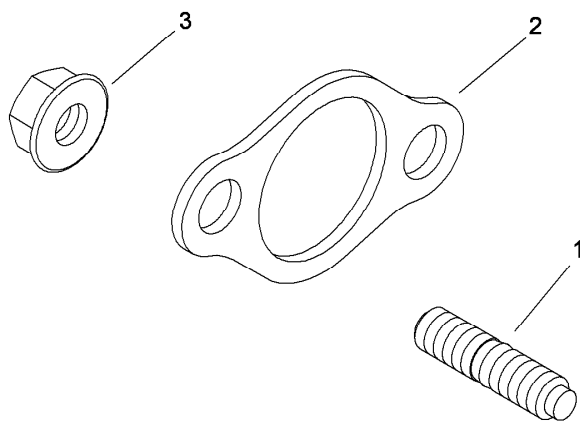


## Air Intake and Filtration Assembly Kohler CH20S-64763

Ref.	Part Number	Qty.	Description
1	24 743 06-S	1	Air Cleaner Cover Kit (Includes 2-5, 12) ■
2	54 755 01-S	1	Knob And Seal Kit (Includes 3, 4) ■
3	25 341 04-S	1	Knob-Cover ■
4	24 153 20-S	1	O-Ring ■
5	24 096 26-S	1	Cover-Air Cleaner ■
6	M-647060-S	1	Nut-Lock (M6X1.0) ■
7	24 096 01-S	1	Cover-Air Cleaner, Inner ■
8	230046-S	1	Seal ■
9	24 083 05-S	1	Pre-Cleaner ■
10	24 083 03-S	1	Element-Filter, Air ■
11	24 086 53-S	3	Screw-Flange, Thread Forming (M6X1.0X16) ■
12	24 126 141-S	1	Bracket-Base, Air Cleaner ■
13	24 094 37-S	1	Base-Cleaner, Air ■
14	25 086 84-S	4	Screw-HF (M6X1.0X55) ■
15	24 164 14-S	1	Manifold-Intake ■
16	24 041 01-S	2	Gasket-Manifold, Intake ■
17	24 041 06-S	1	Gasket-Base, Air Cleaner ■
	28 112 01-S	1	Spacer (Pivot) ● ■

● Not illustrated

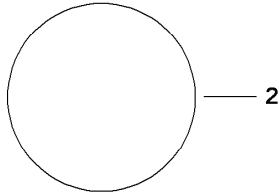
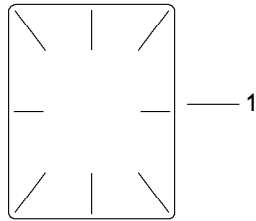
■ Obtain parts from [www.kohlerplus.com](http://www.kohlerplus.com)



## Exhaust Kit Kohler CH20S-64763

<i>Ref.</i>	<i>Part Number</i>	<i>Qty.</i>	<i>Description</i>
1	25 072 14-S	4	Stud (M8X1.25X33) ●
2	24 041 49-S	2	Gasket-Exhaust ●
3	M-841080-S	4	Nut-Flange (M8X1.25) ●

● Obtain parts from [www.kohlerplus.com](http://www.kohlerplus.com)



Artwork is representative  
Actual labels may differ depending on model and specification number

## Decal Set Kohler CH20S-64763

<i>Ref.</i>	<i>Part Number</i>	<i>Qty.</i>	<i>Description</i>
1	25 113 39-S	1	Decal-Laminate, Clear ●
2	25 113 24-S	1	Decal-Screen, Grass ●
3	24 113 95-S	1	Decal-20 Hp ●

● Obtain parts from [www.kohlerplus.com](http://www.kohlerplus.com)

# Attachments and Accessories

## For 22317 Dingo 220 Compact Utility Loader

<b>Product Name</b>	<b>Model/Part</b>
Tire Chain Kit .....	100-4140
Helmet-Face Shield .....	100-4143
Light Kit.....	100-8940
Narrow Tire ASM .....	104-0572
Remote Air Cleaner Kit .....	104-4635
Thigh Support Kit.....	105-0330
Tube-Tire (18 x 8.50-10) .....	105-4070
Rubber Foot Mat.....	105-5805
Tube-Tire (18 X 8.50-8).....	106396
4 Cubic Foot Standard Bucket .....	22409
Loose Materials Bucket .....	22410
48in Hydraulic Blade.....	22414
Rotary Broom .....	22415
Counterweight .....	22417
Bore Drive Head .....	22420
Rod And Reamer .....	22421
Multi-Purpose Tool.....	22423
Power Box Rake .....	22425
Stump Grinder .....	22429
Tree Forks .....	22438
Cement Bowl .....	22442
The Eliminator Scarifier/Groomer .....	22443
40in Tiller .....	22445
Snowthrower.....	22456
Trencher Head.....	22470
High-Speed Trencher Head .....	22471
Narrow Bucket.....	22520
Auger Head .....	22802
Universal Swivel Auger Head .....	22803
Vibratory Plow .....	22911
Soil Cultivator .....	23101
Seeder Box Kit, Soil Cultivator.....	23120
Concrete Breaker .....	23135
Backhoe.....	23163
Adjustable Forks.....	23164
Leveler.....	23165
LH Wheel And Tire ASM.....	98-2747
Wheel and Tire ASM.....	98-4709
Spark Arrestor (Meets USDA Forest Service Standard 5100-1A) .....	98-9099
RH Wheel And Tire ASM .....	99-1447
RH Wheel And Tire ASM (Powerlug) .....	99-3140
LH Wheel And Tire ASM (Powerlug).....	99-3141
Hydraulic Relief Valve Kit.....	99-4360

**Notes:**

**Notes:**



**Count on it.**