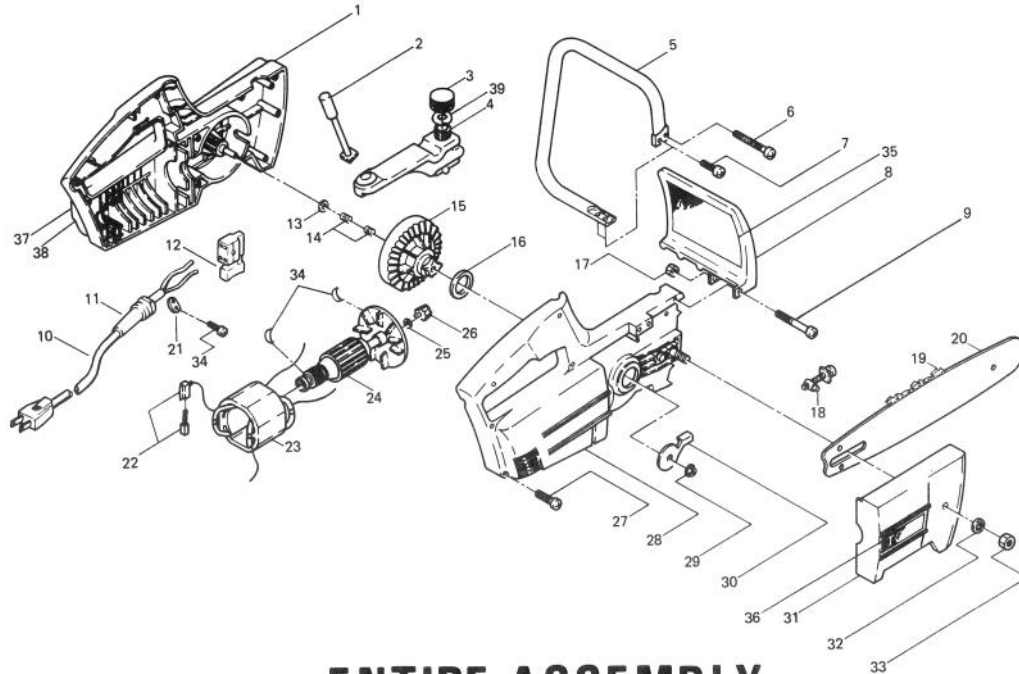




MODEL NO. 51100 & 51140
SERIAL NO. 9000001 – 9299999

PARTS CATALOG

TORO COMPACT ELECTRIC CHAIN SAW 10" & 14"



ENTIRE ASSEMBLY

Ref. No.	Part No.	Description	No. Used
1	34-6270	Left Hand Housing	1
2	34-6190	Oil Button	1
3	34-6370	Oil Cap	1
4	34-6160	Oil Tank	1
5	34-6320	Front Handle	1
6	34-6020	Screw	1
7	34-5990	Screw	3
8	34-6090	Hand Guard	1
9	34-5950	Screw	1
10	34-6380	Power Supply Cord	1
11	34-6200	Bend Relief	1
12	34-6210	Switch	1
13	34-6130	Thrust Washer	1
14	34-6140	Needle Bearing	2
15	34-6120	Sprocket Assembly	1
16	34-6360	Felt Seal	1
17	34-5960	Hexagon Nut	1
18	34-6080	Adjusting Block Assembly	1
19	33-8300	10" Saw Chain	1
*	33-8310	14" Saw Chain	1
20	33-8280	10" Guide Bar	1
*	33-8290	14" Guide Bar	1

Ref. No.	Part No.	Description	No. Used
21	34-6390	Cord Clamp	1
22	34-6350	Brush Assembly	2
23	34-6070	Field Assembly	1
24	34-6330	Armature (including ball bearing)	1
25	34-6100	Collar	1
26	34-6110	Pinion	1
27	34-6010	Screw	10
28	34-6280	Right Hand Housing	1
29	34-6030	Flange Nut	1
30	34-6150	Shaft Support Bracket	1
31	34-6290	Sprocket Cover	1
32	34-5980	Spring Washer	1
33	34-5970	Nut	1
34	34-6340	Rubber Bearing Pad	2
35	34-1460	Decal, Caution	1
36	34-0970	Decal, Toro	1
37	34-0960	Decal, Toro LH	1
38	34-0990	Decal, Chain Saw 10"	1
*	34-0980	Decal, Chain Saw 14"	1
39	34-6310	Oil Cap Packing	1

*Not Illustrated

The Toro Promise

TORO COMPACT ELECTRIC CHAIN SAW

A FULL ONE YEAR WARRANTY

The Toro Company warrants your TORO Product against defects in material or workmanship. During the warranty period, Toro will, at its option, replace a defective product with a new or rebuilt unit, or will repair or replace any defective parts. The following time periods from the date of purchase apply:

Residential 1 Year
Residential Products Used Commercially . . . 45 Days

The cost of replacement or repair is included, but the customer pays the transportation costs.

Should you feel your TORO Product is defective and wish to rely on The Toro Promise, you may return it to:

1. The original place of purchase
- OR
2. A TORO Electrical Service Dealer
- OR
3. The Toro Service Center
Galahad Road and Wisconsin Street
North Hudson, WI 54016
(Postage Prepaid)

Upon return of your unit to one of the above, it will be inspected and you will be advised whether the product is defective. If defective, arrangements will be made for repair or replacement without extra charge to you.

If for any reason you are dissatisfied with the analysis of the defect or the service performed, you may contact us.

Write: TORO Consumer Service Department
8111 Lyndale Avenue South
Minneapolis, MN 55420

THERE IS NO OTHER EXPRESS WARRANTY.

THE TORO COMPANY IS NOT LIABLE FOR INDIRECT OR CONSEQUENTIAL DAMAGES IN CONNECTION WITH THE USE OF THE PRODUCT.

Some states do not allow the exclusion or limitation of incidental or consequential damages, so the above limitation or exclusion may not apply to you.

This Warranty applies only to parts or components which are defective and does not cover repairs necessary due to normal wear, misuse, accidents, or lack of proper maintenance. Regular, routine maintenance of the unit to keep it in proper operating condition is the responsibility of the owner.

All warranty repairs reimbursable under The Toro Promise must be performed by a TORO Electrical Service Dealer using Toro approved replacement parts.

Repairs or attempted repairs by anyone other than a TORO Electrical Service Dealer are not reimbursable under The Toro Promise. In addition, these unauthorized repair attempts may result in additional malfunctions, the correction of which is not covered by warranty.

This warranty gives you specific legal rights, and you may also have other rights which vary from state to state.

COUNTRIES OTHER THAN THE UNITED STATES OR CANADA

Customers who have purchased TORO products exported from the United States or Canada should contact their TORO Distributor (Dealer) to obtain guarantee policies for your country, province or state. If for any reason you are dissatisfied with your Distributor's service or have difficulty obtaining guarantee information, contact

the TORO importer. If all other remedies fail, you may contact us at The Toro Company.

International Group
Service Department
One Corporate Center
7401 Metro Boulevard
Minneapolis, Minnesota 55435 U.S.A.