



CE Kit
for Multi-Pro® 5700-D/5800 Turf Sprayer
Model No. 106-4841

Form No. 3366-310 Rev A

Installation Instructions

Safety

Safety and Instructional Decals

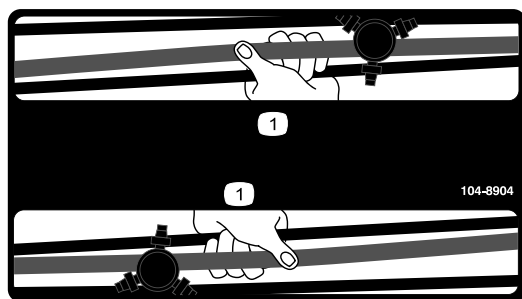


Safety decals and instructions are easily visible to the operator and are located near any area of potential danger. Replace any decal that is damaged or lost.



104-6957

1. Horn



104-8904

1. Grab boom here

Installation

Loose Parts

Use the chart below to verify that all parts have been shipped.

Procedure	Description	Qty.	Use
1	Fan guard	1	Install the fan guard.
	Carriage bolt (5/16 x 3/4 inch)	4	
	Flange nut (5/16 inch)	4	
2	No parts required	–	Drill the holes for the horn components.
3	Horn	1	Install the horn.
	Bolt, 5/16 x 3/4 inch	1	
	Flange nut, 5/16 inch	1	
4	Decal, horn	1	Apply the horn decal.
5	Brake switch	1	Install the brake switch bracket and brake switch.
	Brake switch bracket	1	
6	Tail light	1	Install the tail light and bracket.
	Nut, 1/4 inch	2	
	Tail light bracket (machines with serial numbers 259999999 and lower)	1	
	Tail light bracket (machines with serial numbers 260000001 and higher)	1	
	Bolt, 5/16 x 3/4 inch	2	
	Flange nut, 5/16 inch	2	
7	Decal, boom	2	Apply the decals on the booms.
8	Hose cover	1	Install the hose cover (for machines with serial numbers 259999999 and lower only).
	Plastic ties	3	
9	Horn button assembly	1	Install the wire harness.
	Wire harness	1	
	Screw	2	
	Connector, splice (machines with serial number 240000300 and lower)	2	
	Wire harness, adaptor (machines with serial number 240000300 and lower)	1	
	Wire harness, adapter (machines with serial number 3100000001 and higher)		
	Plastic ties	3	
10	Tank contents slate	1	Install the tank contents slate.

1

Installing the Fan Guard

Parts needed for this procedure:

1	Fan guard
4	Carriage bolt (5/16 x 3/4 inch)
4	Flange nut (5/16 inch)

Procedure

The fan guard is to be installed under the center console.

1. Rotate both seats forward.
2. Remove the two bolts and nuts from the center console (Figure 1).

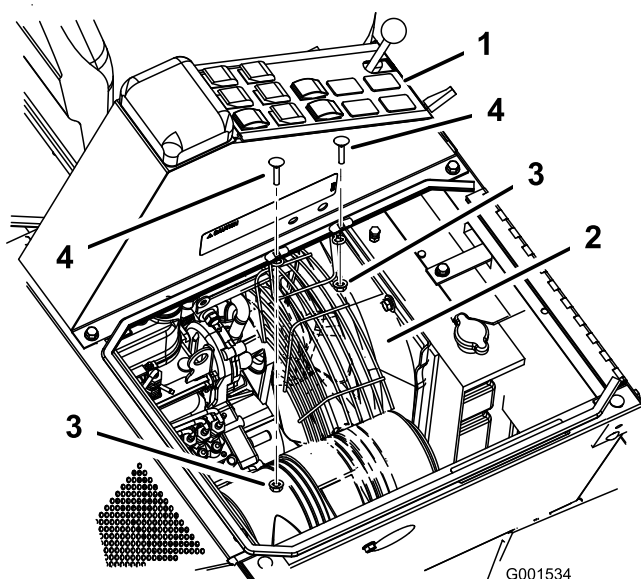


Figure 1

1. Center console
2. Fan guard
3. Flange nut (5/16 inch)
4. Carriage bolt (5/16 x 3/4 inch)
5. Fan

3. Position the guard under the center console and above the fan (Figure 1).
4. Install the fan guard to the center console with four carriage bolts (5/16 x 3/4 inch) and four flange nuts (5/16 inch) (Figure 1).

2

Drilling the Holes for the Horn Components

No Parts Required

Procedure

Not all machines will need preparation for the installation of the horn and horn button. Inspect the locations described in the procedure and verify the necessity for drilling holes at the location before altering the machine.

1. Locate the clutch plate under the floorboard (Figure 2).

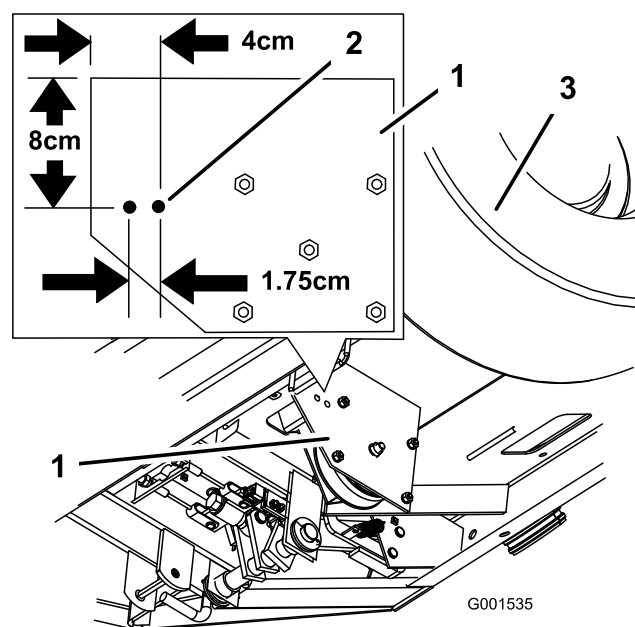


Figure 2

1. Clutch plate
2. Holes to drill
3. Right front tire

2. To drill holes for the horn, measure and mark the holes as shown in Figure 2.
3. Drill two 8 mm diameter holes in the clutch plate (Figure 2).
4. To locate the hole for the horn button, measure 8.6 cm (3-3/8 inches) to the left of the steering column base and 3.8 cm (1-1/2 inches) from the center of the dash screw head (Figure 3).

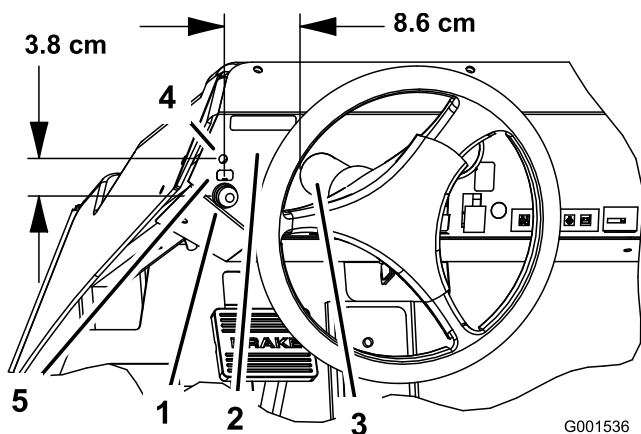


Figure 3

1. Horn button hole
2. Dash
3. Steering column
4. Dash screw head
5. Horn decal

Note: Some machines may have a cut-out in the dash at this location in anticipation for the installation of the horn button. If so, simply punch out the hole and clean up any burrs or sharp edges.

5. Drill a hole, 1.59 cm (5/8 inch) in diameter, into the dash panel.

3

Installing the Horn

Parts needed for this procedure:

1	Horn
1	Bolt, 5/16 x 3/4 inch
1	Flange nut, 5/16 inch

Procedure

1. Bend the middle tab at the end of the bracket to a 90 degree angle (Figure 4).

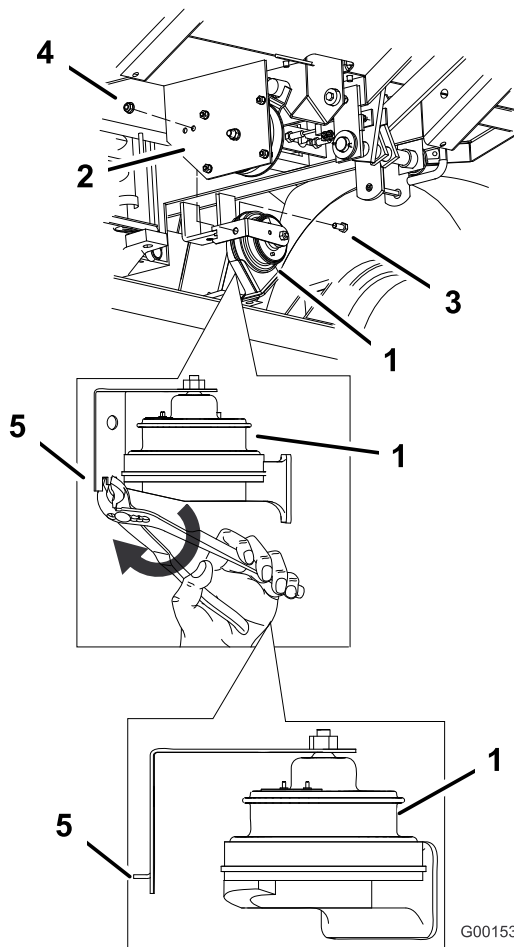


Figure 4

1. Horn
2. Clutch plate
3. Bolt (5/16 x 3/4 inch)
4. Flange nut (5/16 inch)
5. Bend the tab on bracket to a 90 degree angle

2. Install the bent tab into the back hole that was previously drilled. Secure the horn to the clutch plate using a bolt (5/16 x 3/4 inch) and a flange nut (5/16 inch) (Figure 4).

4

Applying the Horn Decal

Parts needed for this procedure:

1	Decal, horn
---	-------------

Procedure

1. Clean the decal area above the horn button and make sure it is free of dirt, grease, or other foreign material.
2. Remove the backing of the new decal and place just above the horn button on the dash (Figure 3).

5

Installing Brake Switch Bracket and Brake Switch

Parts needed for this procedure:

1	Brake switch
1	Brake switch bracket

Procedure

1. Disconnect the wire harness from the existing brake switch.
2. Remove the existing brake switch and bracket. Save all the hardware.
3. Install the new brake switch with the previously removed hardware (Figure 5).

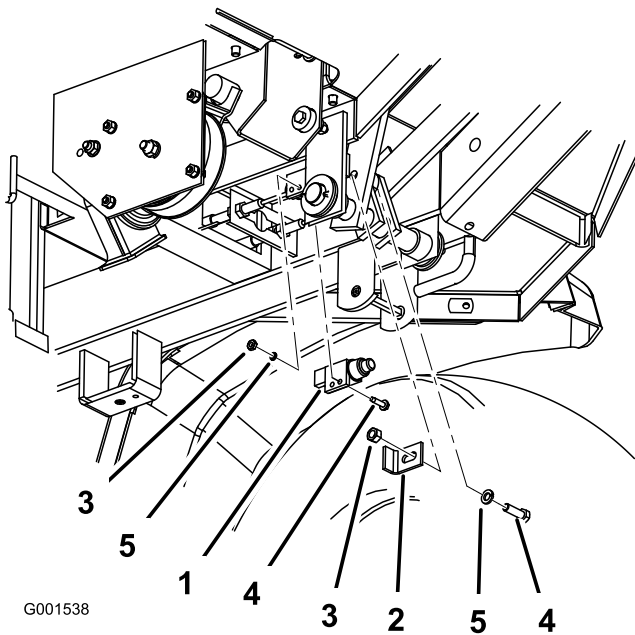


Figure 5

- | | |
|-------------------------|--------------------|
| 1. Brake switch | 4. Existing bolt |
| 2. Brake switch bracket | 5. Existing washer |
| 3. Existing nut | |

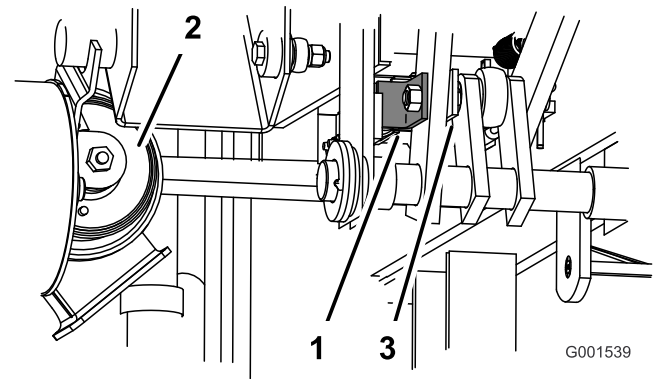


Figure 6

5. Adjust the new bracket so that the brake switch is depressed 6 mm (1/4 inch) when the brake is released Figure 7.

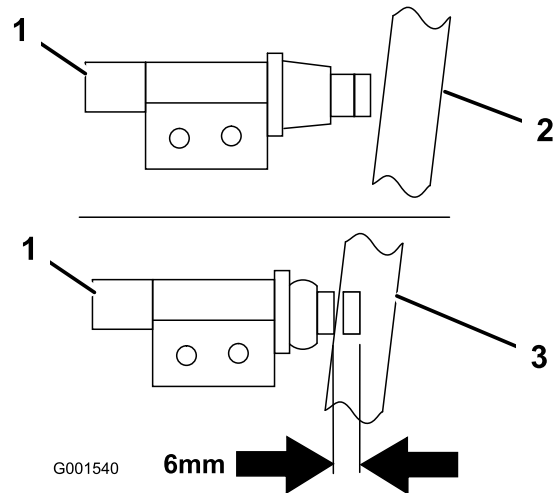


Figure 7

- | | |
|---------------------|-------------------|
| 1. New brake switch | 3. Brake released |
| 2. Brake engaged | |

4. Install the new brake switch bracket with the previously removed hardware (Figure 5 and Figure 6).

6

Installing the Tail Light and Bracket

Parts needed for this procedure:

1	Tail light
2	Nut, 1/4 inch
1	Tail light bracket (machines with serial numbers 259999999 and lower)
1	Tail light bracket (machines with serial numbers 260000001 and higher)
2	Bolt, 5/16 x 3/4 inch
2	Flange nut, 5/16 inch

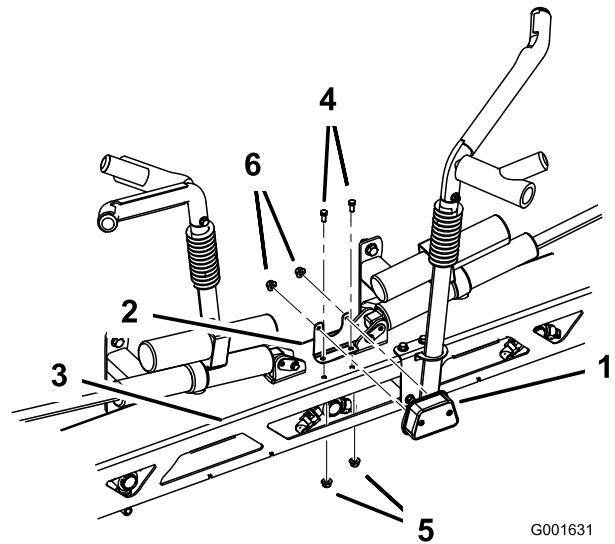


Figure 9

- | | |
|---------------------------|--------------------------|
| 1. Tail light | 4. Bolt, 5/16 x 3/4 inch |
| 2. Tail light bracket | 5. Flange nut, 5/16 inch |
| 3. Left side boom support | 6. Nut, 1/4 inch |

For machines with serial numbers 259999999 and lower

1. Install the tail light bracket to the left side boom support with 2 bolts (5/16 x 3/4 inch) and 2 flange nuts (5/16 inch) (Figure 8).
2. Install the tail light to the tail light bracket with 2 nuts (1/4 inch) (Figure 8).

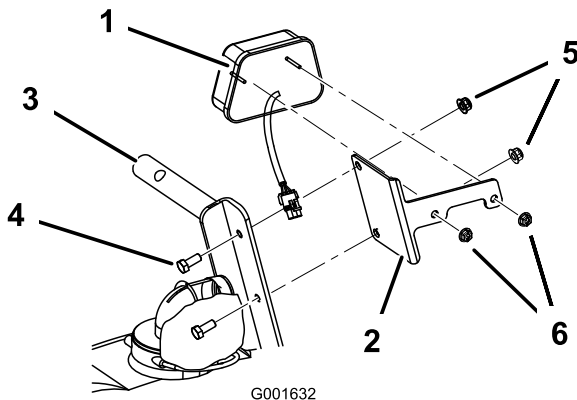


Figure 8

- | | |
|---------------------------|--------------------------|
| 1. Tail light | 4. Bolt, 5/16 x 3/4 inch |
| 2. Tail light bracket | 5. Flange nut, 5/16 inch |
| 3. Left side boom support | 6. Nut, 1/4 inch |

For machines with serial numbers 260000001 and higher

1. Install the tail light bracket to the center boom support with 2 bolts (5/16 x 3/4 inch) and 2 flange nuts (5/16 inch) (Figure 9).
2. Install the tail light to the tail light bracket with 2 nuts (1/4 inch) (Figure 9).

7

Applying the Decals on the Booms

Parts needed for this procedure:

2	Decal, boom
---	-------------

Procedure

1. Measure from the end of the booms as shown in Figure 10 or Figure 11.

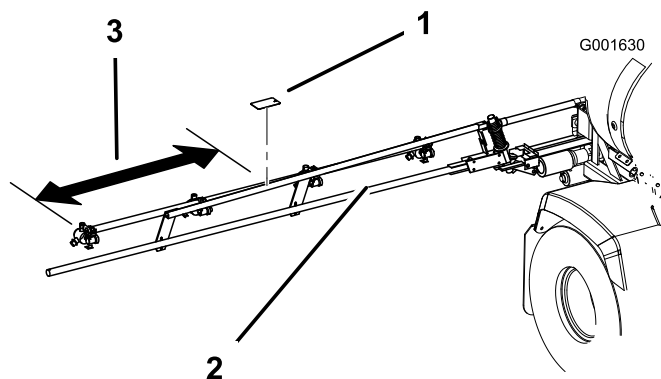


Figure 10

For machines with serial numbers 259999999 and lower

1. Decal
2. Boom
3. Measure 30 cm (11-3/4 inches)

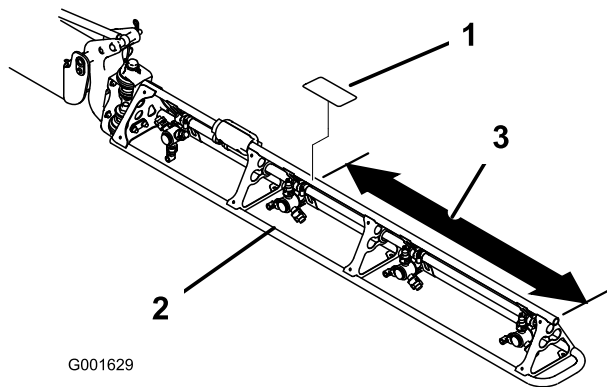


Figure 11

For machines with serial numbers 260000001 and higher

1. Decal
2. Boom
3. Measure 90 cm (35-1/2 inches)

2. Clean the decal area and make sure the area is free of dirt, grease, or other foreign material.

3. Remove the backing of the new decal and place onto the boom (Figure 10 or Figure 11).
4. Repeat the procedure on the opposing boom.

8

Installing the Hose Cover

Parts needed for this procedure:

1	Hose cover
3	Plastic ties

For machines with serial numbers 259999999 and lower only.

1. Locate the hydraulic hoses under the dash panel (Figure 12).

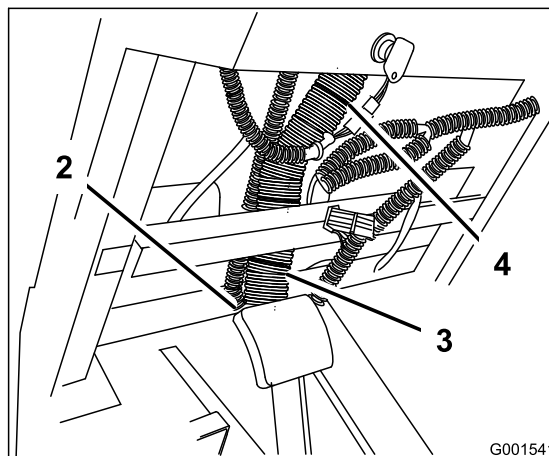
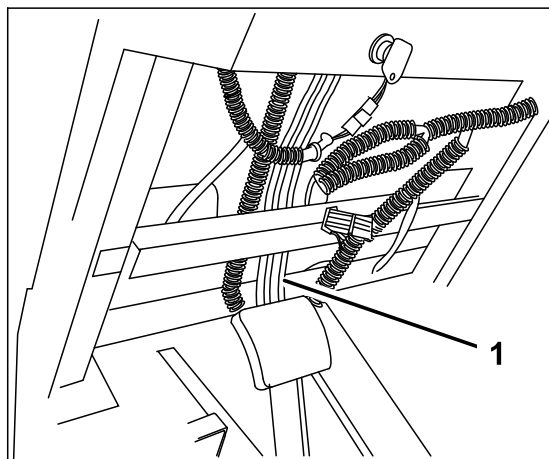


Figure 12

1. Hydraulic hoses
2. Wire access hole
3. Hose cover
4. Wire tie

2. Remove all existing wire ties securing the hydraulic hoses (Figure 12).

3. Install the large hose cover over the hydraulic hoses only.

Note: Make sure the slit in the hose cover is positioned to the front of the vehicle (away from the operator).

4. Position the cover so that it extends down through the wire access hole in the floorboard and up to the steering control unit (Figure 12).
5. Secure the cover with new wire ties supplied with the kit (Figure 12).

For machines with serial numbers 260000001 and higher

No action is necessary. Proceed to the next step.

9

Installing the Wire Harness

Parts needed for this procedure:

1	Horn button assembly
1	Wire harness
2	Screw
2	Connector, splice (machines with serial number 240000300 and lower)
1	Wire harness, adaptor (machines with serial number 240000300 and lower)
	Wire harness, adaptor (machines with serial number 3100000001 and higher)
3	Plastic ties

Routing the Harness

1. Starting from behind the drivers seat, route the tail light connector towards the rear of the machine.

Note: The harness needs to follow the left side of the frame towards the rear and above the frame behind the seat (Figure 13).

2. Install the harness into the R-clamp located behind the drivers seat and on top of the frame (Figure 13).

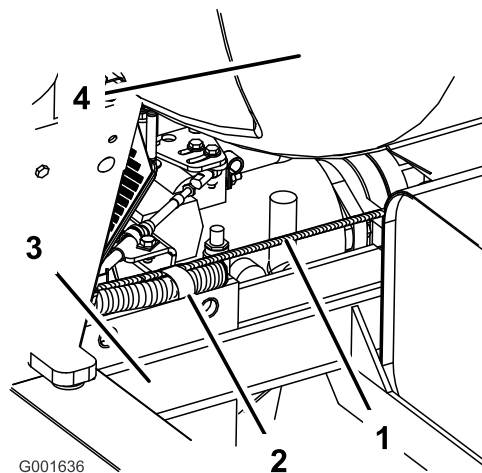


Figure 13

1. Wire harness
2. R-clamp
3. Machine frame, left side
4. Tank

3. Connect the tail light connector on the wiring harness to the tail light pigtail.

For machines with serial numbers 259999999 and lower

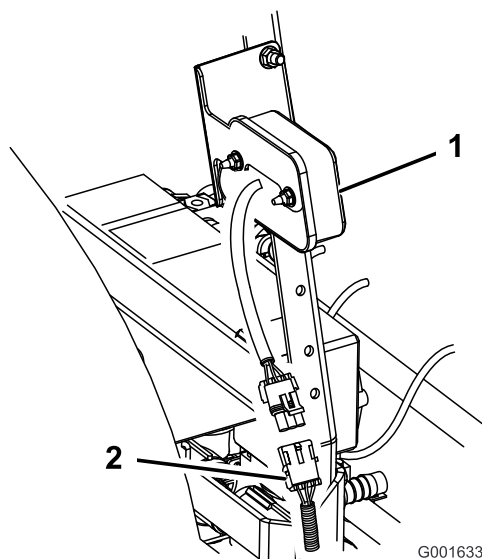


Figure 14

1. Tail light
2. Pigtail connector

For machines with serial numbers 260000001 and higher.

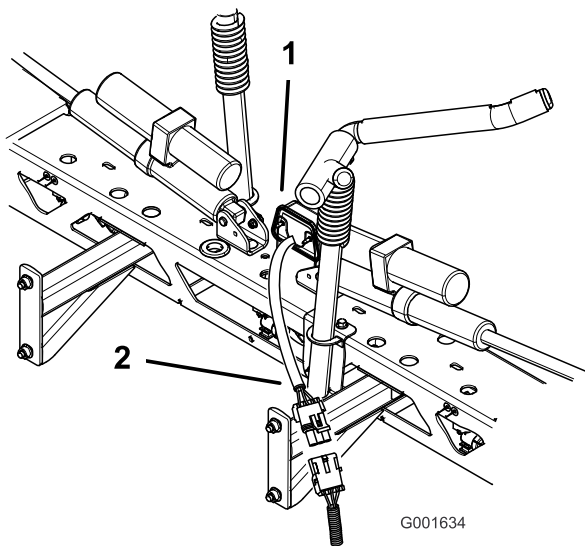


Figure 15

1. Tail light
2. Pigtail connector

4. Route the remaining wire harness under the seat, under the floor board, through the center hole in the floorboard, next to the hydraulic hoses and up to the switch area under the dash panel.

Note: Make sure the harness does not touch any part of the engine exhaust system.

Installing the Horn Button

1. Open the horn button packing that includes the horn switch and button cap, 2 screws, and nut.
2. Remove the horn button cap and thread the nut onto the exposed threads of the switch (Figure 16).

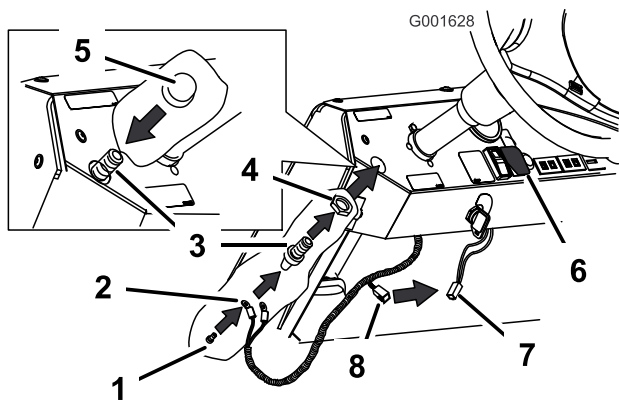


Figure 16

1. Screw
2. Wire leads for horn button
3. Horn switch
4. Threaded nut
5. Horn button
6. Light switch
7. Connector from light switch
8. Connector to light switch

3. Connect the white and red wires at the end of the wiring harness to the back of the horn switch using the two screws included (Figure 16).
4. Move the switch assembly under the dash and push it through the drilled hole (Figure 16).
5. Screw the horn button cap onto the switch threads to secure the assembly to the dash (Figure 16).

Note: Adjust the retaining ring and horn button cap as necessary.

6. Reach under the dash and verify if there is a wire lead as shown in Figure 16. This comes from the main harness under the light switch. If there is a wire lead, connect it to the new harness.

If there is no wire lead, continue to install either of the wire harness adaptors that are associated with the machine serial number.

Installing the Adaptor Wire Harness (For machines with serial number 240000300 and lower)

Note: The wire harness adaptor and clamp splices are only for machines that do not have it installed under the dash coming from the light switch connection.

- A. Remove the connector from the light switch by pushing on the tab located on the bottom of the connector.
- B. Match up the colored wires and splice the two ends onto the wires going into the light switch connector (Figure 17).

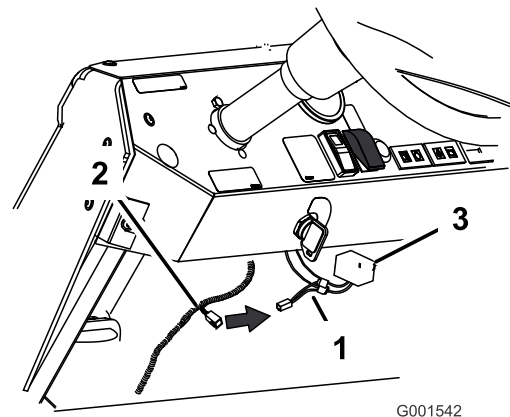


Figure 17

1. Adaptor wire harness spliced to the light switch connector wires
2. Connector from new wire harness
3. Light switch connector

- C. Connect the adaptor wire harness to the new harness (Figure 17).

- D. Install the connector back onto the light switch under the dash.

Installing the Adaptor Wire Harness (For machines with serial number 3100000001 and higher)

Note: New machines need an 4 pin adapter to connect to the main wiring harness for power.

- A. Locate the power connector labeled CE kit on the main wiring harness under the dash.
- B. Install the adapter to the main wiring harness by connecting the mating 4 pin connectors. (Figure 18).

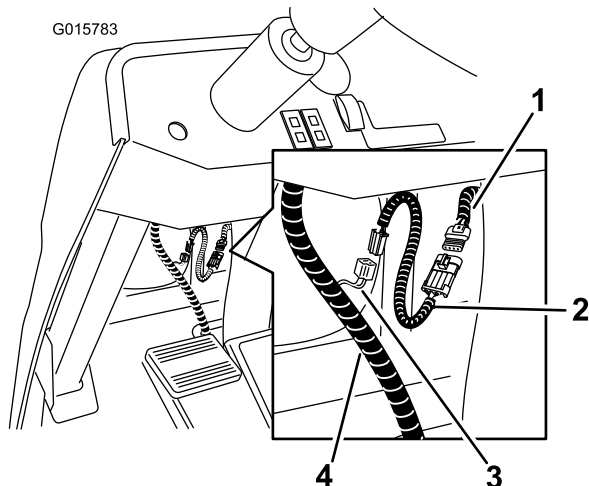


Figure 18

- | | |
|-----------------------------------------|-----------------------------------------------|
| 1. Power connector, main wiring harness | 3. Auxillary connector, CE kit wiring harness |
| 2. Adapter, 4 pin | 4. CE kit wiring harness |

- C. Connect the adaptor wire harness to the CE harness (Figure 18).

Connecting the Harness to the New Brake Switch and Horn

1. Under the floor board, connect the two quick connect terminals to the horn (Figure 19).
2. Connect the brake switch connector to the new brake switch (Figure 19).
3. Connect the new harness to the old brake switch connector (Figure 19).

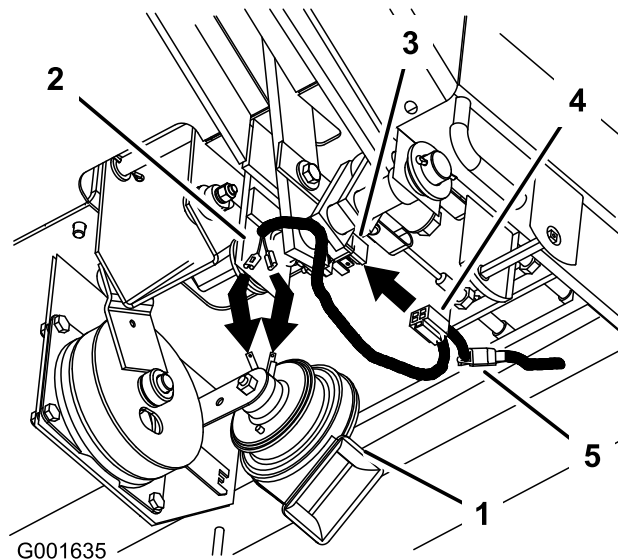


Figure 19

- | | |
|----------------------------|------------------------------------|
| 1. Horn | 4. Brake connector |
| 2. Quick connect terminals | 5. Connector from old brake switch |
| 3. Brake switch | |

Connecting the Harness Ground Below the Solenoid

1. Raise the drivers seat to locate the solenoid.
2. Remove one of the ground screws located under the solenoid (Figure 20).
3. Install the wire harness to the ground block with the previously removed ground screw (Figure 20).

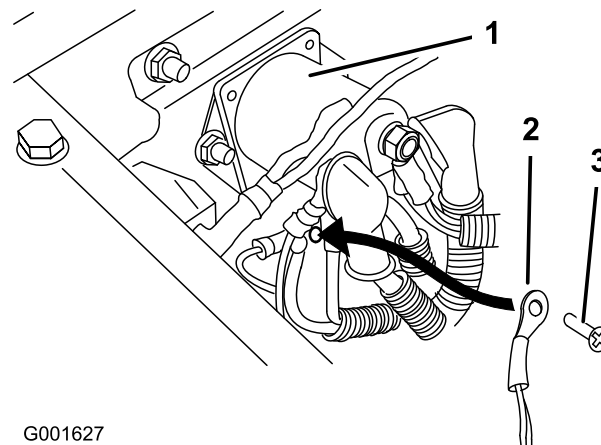


Figure 20

- | | |
|----------------------|-----------------|
| 1. Solenoid | 3. Ground screw |
| 2. Ground connection | |

Installing the Plastic Ties

Install the wire harness to the machine frame with plastic ties.

Checking Brake Light Function

Turn the ignition to On and press the brake. Verify the parking light lamp illuminates.

10

Installing the Tank Contents Slate

Parts needed for this procedure:

1	Tank contents slate
---	---------------------

Procedure

Locate the erasable tank contents slate in loose parts. The magnetic backing allows it to affixed to any metallic surface. The Toro® Company recommends affixing on the ROPS directly behind the operator’s position. Place the slate on the ROPS bar to install.



Count on it.