



Count on it.

Parts Catalog

**TimeCutter® ZS 3200 Riding
Mower**

Model No. 74385—Serial No. 311000001 and Up

Ordering Replacement Parts

To order replacement parts, please supply the part number, the quantity, and the description of each part desired.

Understanding Reference Numbers

Each identified part in an illustration has a reference number. The reference number for a part also appears in the parts list, along with other information about the part.

This catalog uses two special reference number formats, one to indicate parts in a service assembly and another to indicate the quantity of a given part in an illustration.

Service Assembly Reference Numbers

Parts in service assemblies have reference numbers in the form a:b. The a represents the reference number of the entire service assembly and the b represents a sequential number unique to each part within the service assembly.

For example, a wheel assembly might be identified by reference number 6, the tire by 6:1, the valve by 6:2, and the wheel by 6:3. When you order the assembly identified by reference number 6, you receive all parts identified by reference numbers 6:1, 6:2, and 6:3. However, you may also order any part individually. Reference numbers of this type appear in illustration and in parts lists.

Reference Numbers Indicating Quantity

In an illustration, if a reference number indicates more than one part, the reference number has the form nX y. The n represents the quantity of the part, the X is the multiplication symbol, and the y represents the reference number.

For example, in an illustration, the reference number 2X 37 means that two of the parts identified by reference number 37 are indicated.

List of Abbreviations

AR: as required

ASM: assembly

BBC: blade brake control

BHTF: button head thread forming

CARR: carriage

CCW: counter clockwise

CW: clockwise

DEG: degrees

DPA: Dual Point Adjustment

ECM: electronic control module

EXT: external

FH: flat head

GA: gauge

HD: heavy-duty

HF: hex flange

HH: hex head

HHF: hex head flange

HHFTF: hex head flange thread forming

HJ: hex jam

HLH: hex lag head

HOC: height-of-cut

HSBH: hex socket button head

HSFH: hex socket flat head

HSH: hex socket head

HWH: hex washer head

HWHTF: hex washer head thread forming

HYD: hydraulic

LH: left hand

LP: Liquid Propane

NI: nylon insert

NPTF: national pipe thread fine

PFH: phillips flat head

PPH: phillips pan head

PPHTF: phillips pan head thread forming

PRH: phillips round head

PTH: phillips truss head

PTO: power-take-off

RH: right hand

ROPS: roll-over protection system

RRB: rear roller brush

SFH: slotted fillister head

SHH: slotted hex head

SHWH: slotted hex washer head

SPH: slotted pan head

SQH: square head

SRH: slotted round head

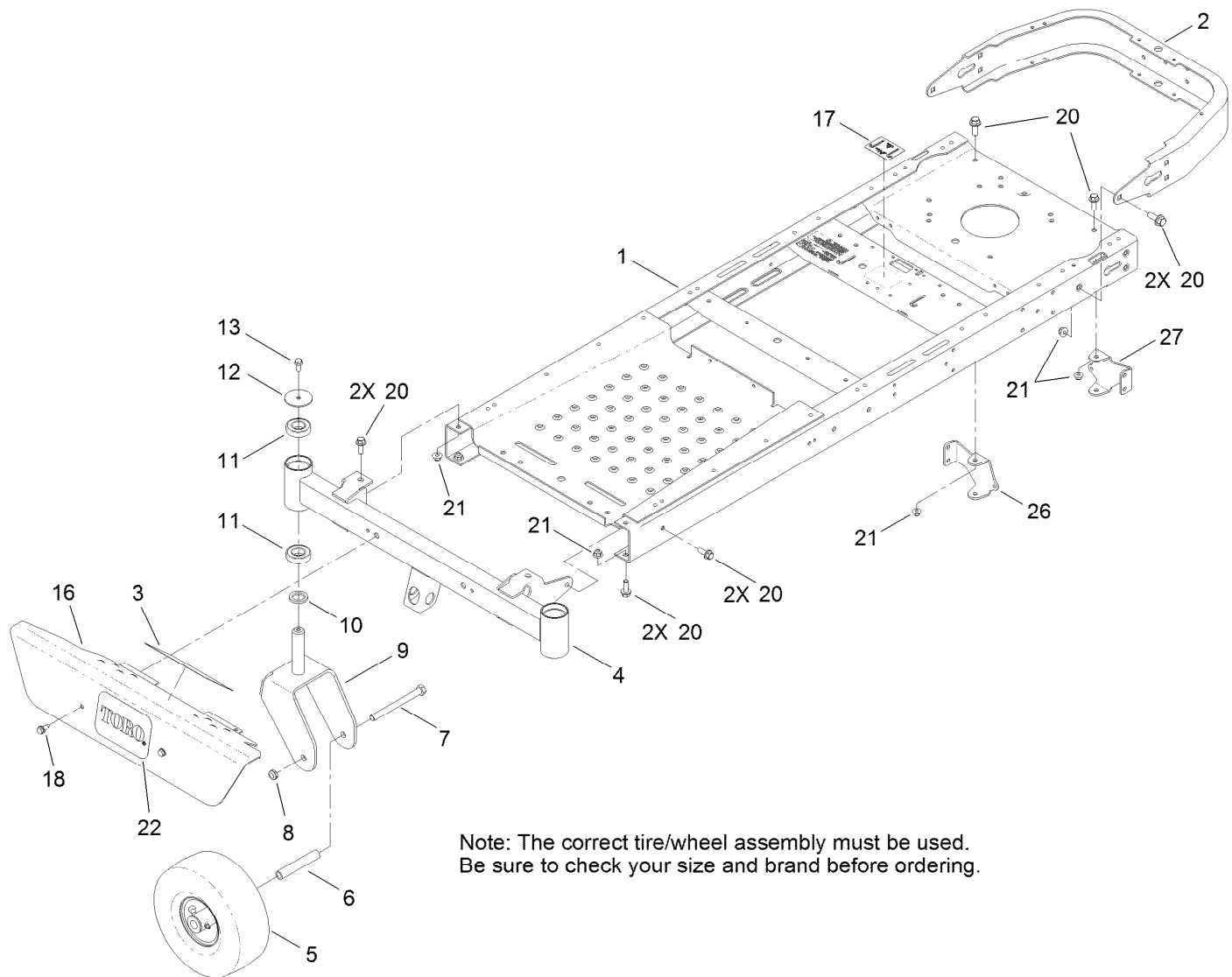
STD: standard

TAP: self tapping

TTH: torx truss head

Contents

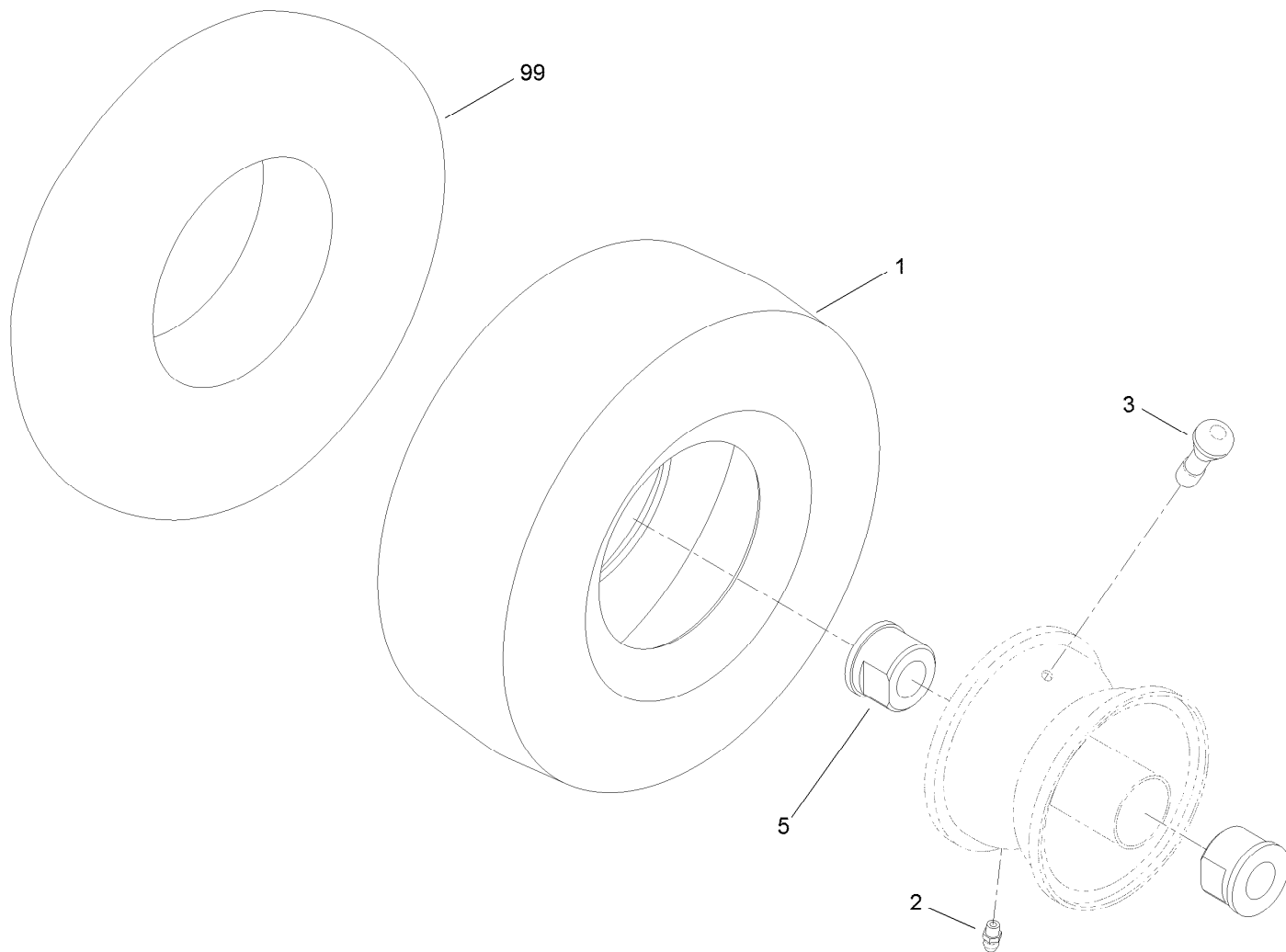
| | |
|--|----|
| Frame, Front Axle and Caster Wheel Assembly | 4 |
| Caster Wheel Assembly No. 110-6785..... | 5 |
| Caster Wheel Assembly No. 120-5515..... | 6 |
| Deck Lift Assembly..... | 7 |
| Motion Control Assembly | 8 |
| Seat Assembly | 10 |
| Hydro Transaxle Drive and Rear Wheel Assembly | 11 |
| Right Hand Hydro Transaxle Assembly No. 119-3331 | 12 |
| Left Hand Hydro Transaxle Assembly No. 119-3330 | 14 |
| Engine, Muffler and Clutch Assembly | 16 |
| Body Styling and Fuel Pod Assembly | 17 |
| Fuel Delivery Assembly..... | 18 |
| Electrical Assembly | 19 |
| 32 Inch Deck Assembly..... | 20 |
| 32 Inch Deck Baffle Assembly | 21 |
| 32 Inch Deck, Belt and Blade Assembly | 22 |
| Attachments and Accessories | 23 |



Note: The correct tire/wheel assembly must be used.
Be sure to check your size and brand before ordering.

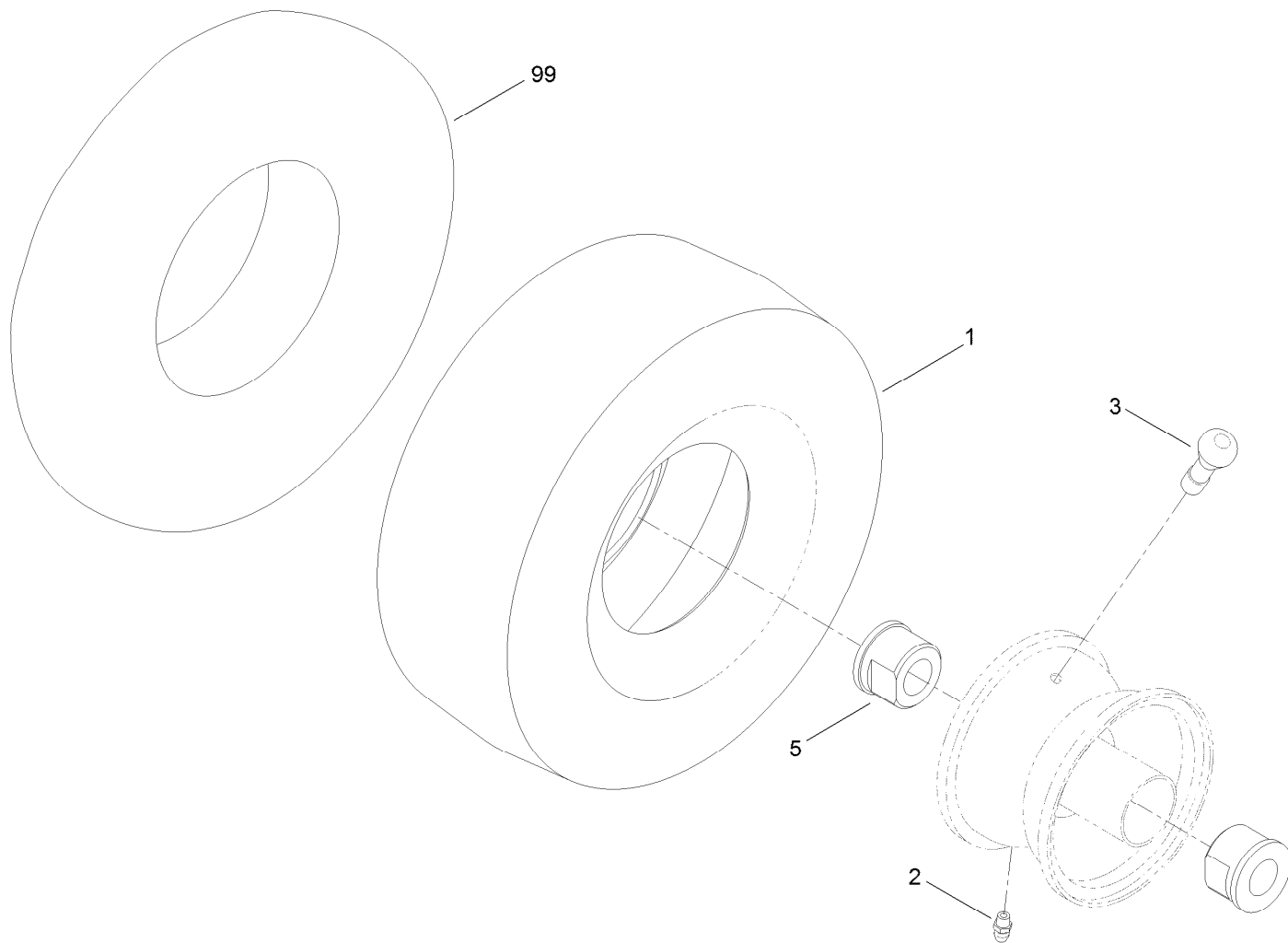
Frame, Front Axle and Caster Wheel Assembly

| Ref. | Part Number | Qty. | Description | Ref. | Part Number | Qty. | Description |
|------|-------------|------|--------------------------|------|-------------|------|------------------------|
| 1 | 120-2213-01 | 1 | Frame ASM | 12 | 119-8915 | 2 | Washer |
| 2 | 110-1920-01 | 1 | Bumper-Rear | 13 | 3234-47 | 2 | Screw-HHF |
| 3 | 120-2239 | 1 | Decal-Danger | 16 | 117-7332-03 | 1 | Footrest |
| 4 | 120-5516-01 | 1 | Axle-Front | 17 | 120-5465 | 1 | Decal-Transport |
| 5 | 110-6785 | 2 | Caster Wheel ASM (Kenda) | 18 | 32144-70 | 2 | Screw-HWHTF |
| 5 | 120-5515 | 2 | Caster Wheel ASM (Cst) | 20 | 3234-42 | 12 | Screw-HHF |
| 6 | 104-3667 | 2 | Spanner-Wheel | 20 | 3274-94 | 2 | Screw-HSBH |
| 7 | 325-22 | 2 | Screw-HH | 21 | 104-8301 | 14 | Nut-Flange, NI |
| 8 | 3296-45 | 2 | Nut-Lock, NI | 22 | 105-8278 | 1 | Decal |
| 9 | 120-2266-01 | 2 | Fork-Caster | 26 | 117-7459-01 | 1 | Mount-Hydro, Rear (RH) |
| 10 | 117-7394 | 2 | Washer-Thrust | 27 | 117-7460-01 | 1 | Mount-Hydro, Rear (LH) |
| 11 | 109-3678 | 4 | Bearing-Ball | | | | |



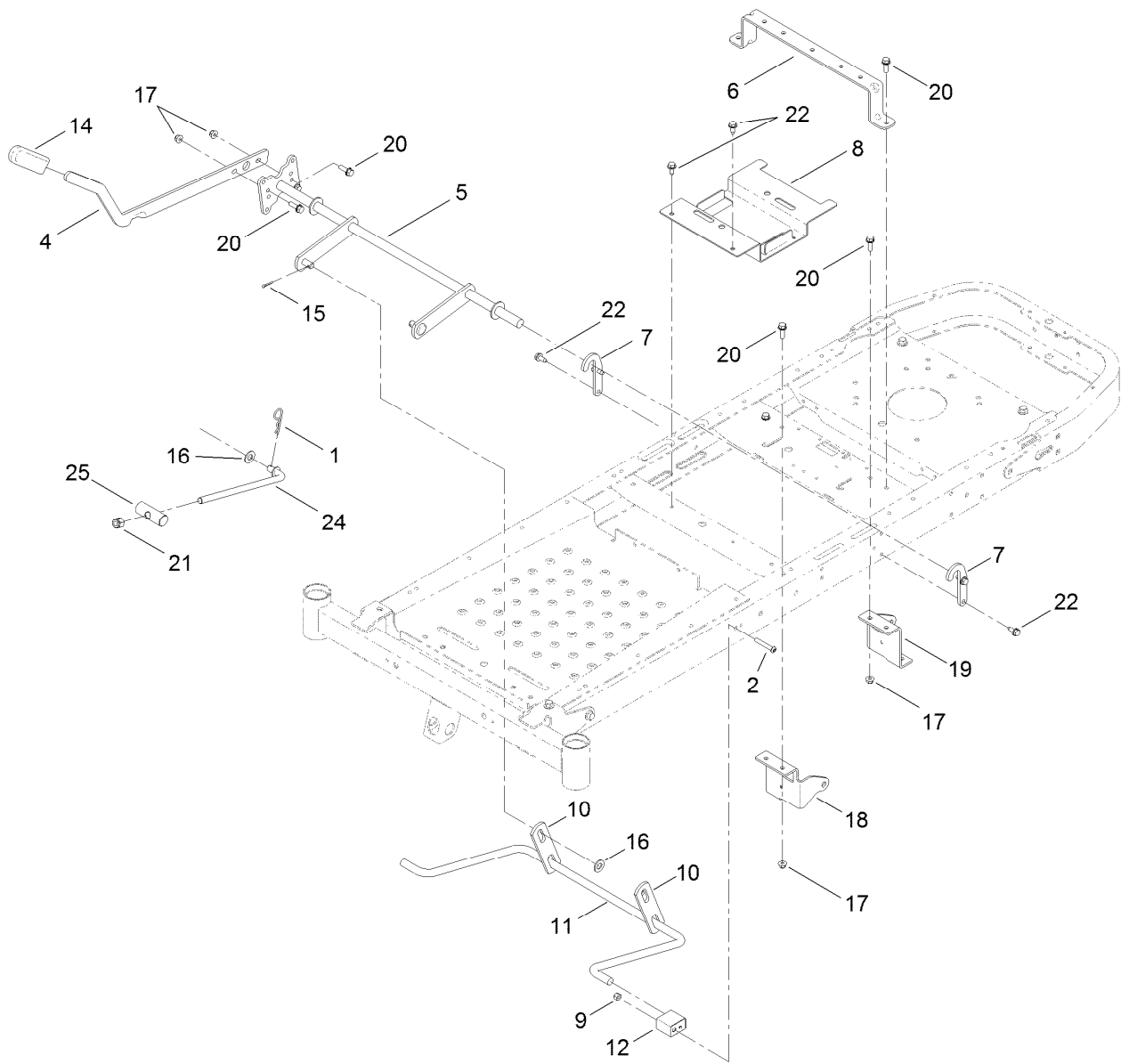
Caster Wheel Assembly No. 110-6785

| <i>Ref.</i> | <i>Part Number</i> | <i>Qty.</i> | <i>Description</i> |
|-------------|--------------------|-------------|----------------------|
| 1 | 110-6791 | 1 | Tire-Smooth (Kenda) |
| 2 | 302-5 | 1 | Fitting-Grease |
| 3 | 232-27 | 1 | Stem-Valve |
| 5 | 114-1640 | 2 | Bushing-Flange |
| 99 | 93-4244 | 1 | Tube-Inner (W/Valve) |



Caster Wheel Assembly No. 120-5515

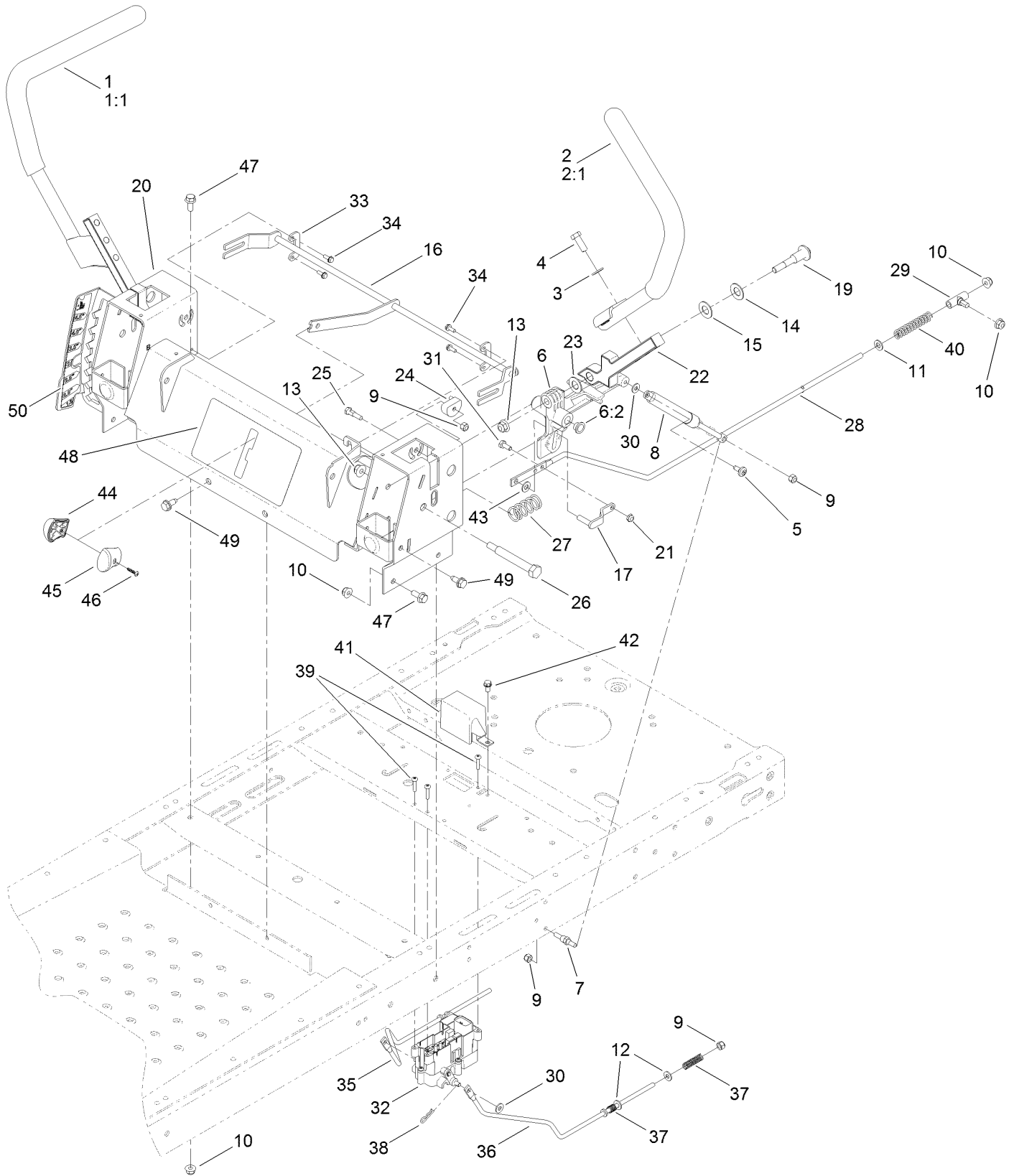
| <i>Ref.</i> | <i>Part Number</i> | <i>Qty.</i> | <i>Description</i> |
|-------------|--------------------|-------------|----------------------|
| 1 | 120-5514 | 1 | Tire-Smooth (Cst) |
| 2 | 302-5 | 1 | Fitting-Grease |
| 3 | 232-27 | 1 | Stem-Valve |
| 5 | 114-1640 | 2 | Bushing-Flange |
| 99 | 93-4244 | 1 | Tube-Inner (W/Valve) |



Deck Lift Assembly

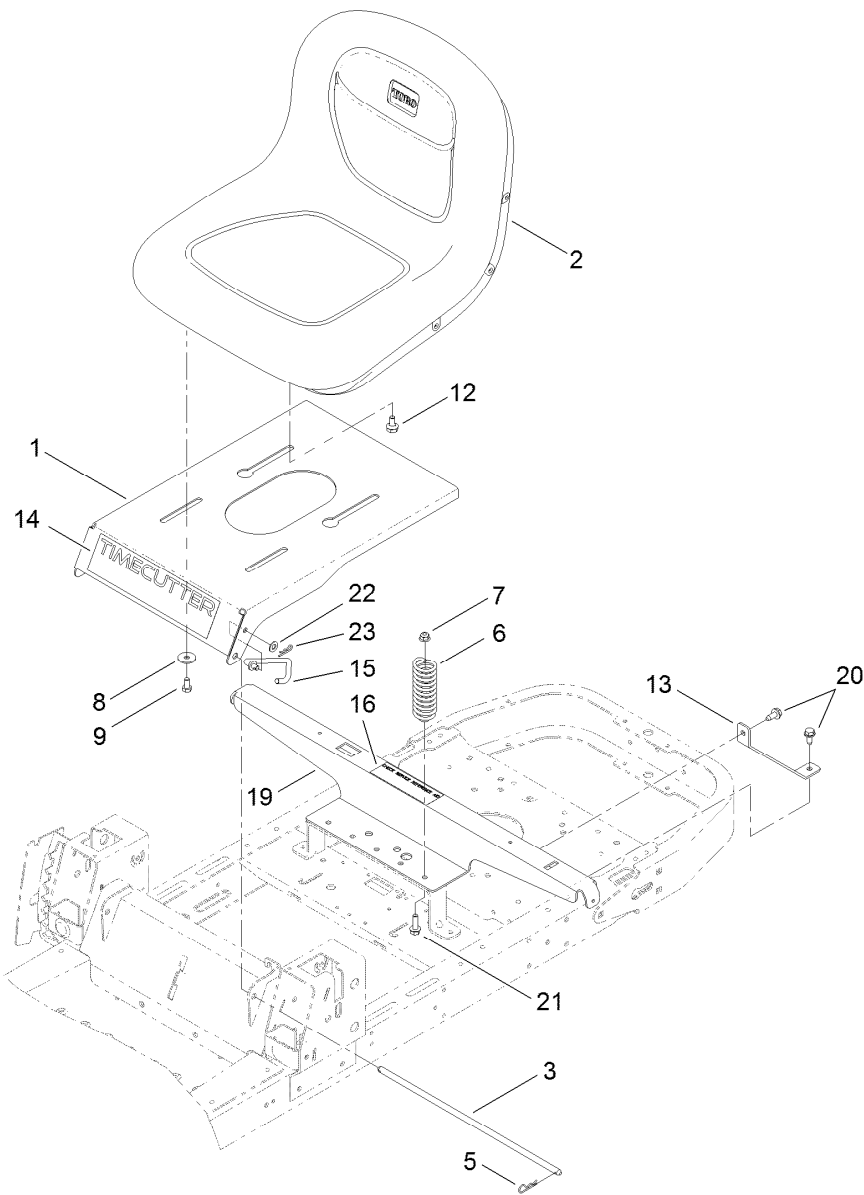
| <i>Ref.</i> | <i>Part Number</i> | <i>Qty.</i> | <i>Description</i> | <i>Ref.</i> | <i>Part Number</i> | <i>Qty.</i> | <i>Description</i> |
|-------------|--------------------|-------------|--------------------|-------------|--------------------|-------------|-------------------------|
| 1 | 1-806005 | 1 | Pin-Hair | 14 | 1-633268 | 1 | Grip-Lever |
| 2 | 120-5499 | 2 | Screw-HSBH | 15 | 3272-10 | 2 | Pin-Cotter |
| 4 | 119-3427-03 | 1 | Lever-Lift | 16 | 3256-26 | 3 | Washer-Flat |
| 5 | 117-7346-03 | 1 | Deck Lift ASM | 17 | 104-8300 | 6 | Nut-Flange, NI |
| 6 | 119-3435-03 | 1 | Brace-Seat, Rear | 18 | 119-8861-01 | 1 | Mount-Hydro, Front (RH) |
| 7 | 119-8875 | 2 | Bracket-Lift | 19 | 119-8862-01 | 1 | Mount-Hydro, Front (LH) |
| 8 | 119-3406-03 | 1 | Bracket-Battery | 20 | 3234-29 | 6 | Screw-HHF |
| 9 | 3296-29 | 2 | Nut-Lock, NI | 21 | 3296-19 | 1 | Nut-Hex |
| 10 | 108-7840 | 2 | Link-Lift | 22 | 32144-70 | 6 | Screw-HWHTF |
| 11 | 108-7839 | 1 | Arm-Lift, Rear | 24 | 104-8047 | 1 | Rod-Trunion |
| 12 | 108-7845 | 2 | Block-Pivot | 25 | 119-8810 | 1 | Pin-Pivot |

Motion Control Assembly



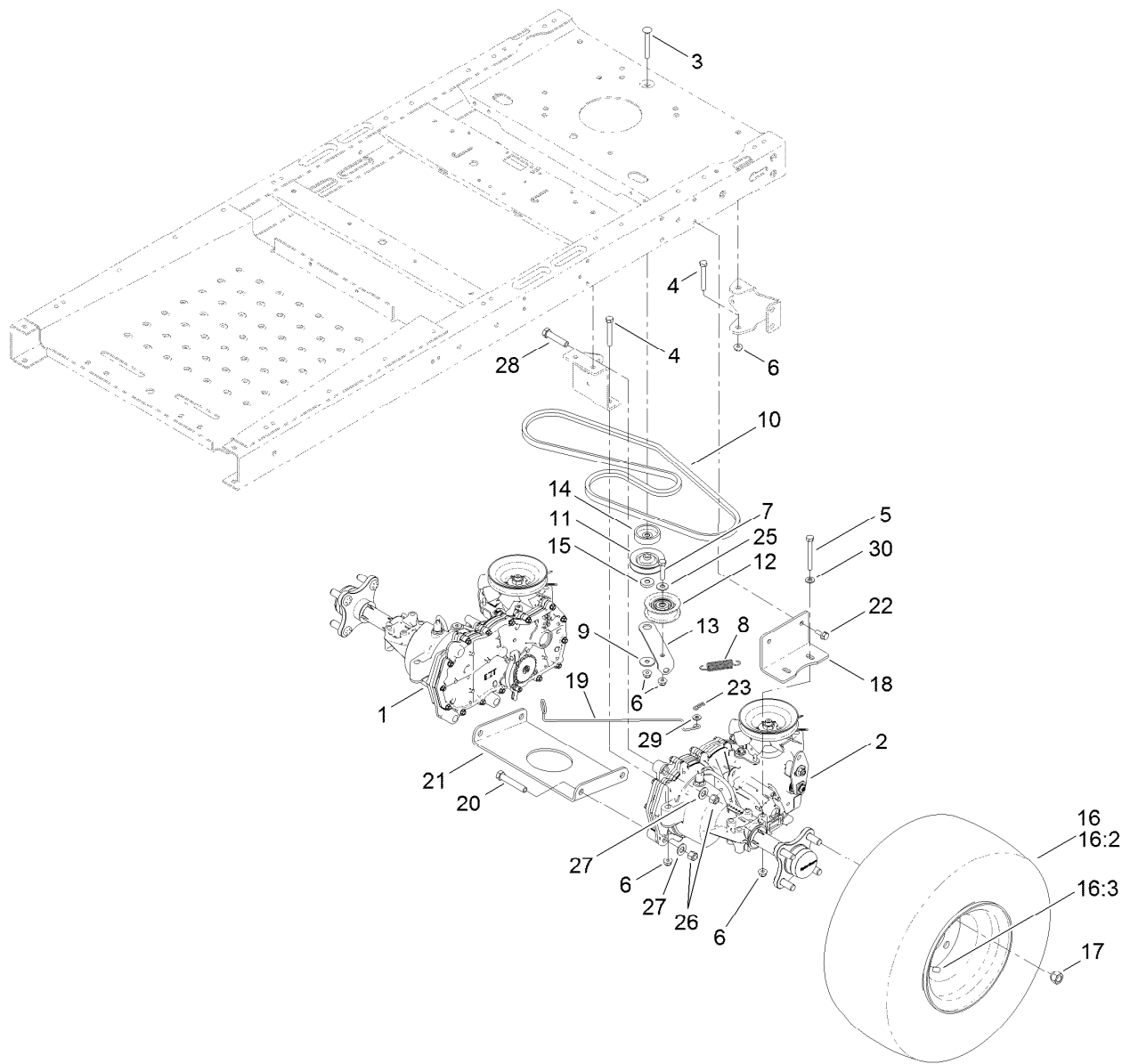
Motion Control Assembly (continued)

| <i>Ref.</i> | <i>Part Number</i> | <i>Qty.</i> | <i>Description</i> | <i>Ref.</i> | <i>Part Number</i> | <i>Qty.</i> | <i>Description</i> |
|-------------|--------------------|-------------|------------------------|-------------|--------------------|-------------|--------------------------|
| 1 | 119-3486 | 1 | RH Handle ASM | 25 | 119-3301 | 2 | Bolt-Pivot, Eccentric |
| 1:1 | 108-6187 | 1 | Grip | 26 | 115-5099 | 2 | Bolt-Pivot |
| 2 | 119-3485 | 1 | LH Handle ASM | 27 | 119-8876 | 2 | Spring-Return |
| 2:1 | 108-6187 | 1 | Grip | 28 | 117-5388 | 2 | Rod-Hydro |
| 3 | 3256-24 | 4 | Washer-Flat | 29 | 119-8842 | 2 | Mount-Rod, Hydro |
| 4 | 323-6 | 4 | Screw-HH | 30 | 119-8952 | 4 | Washer |
| 5 | 112-4004 | 2 | Screw-Shoulder | 31 | 321-3 | 2 | Screw-HH |
| 6 | 119-3470 | 2 | Actuator Arm ASM | 32 | 115-9660 | 1 | Brake Control Module ASM |
| 6:2 | 256-156 | 2 | Bushing-Flange | 33 | 117-5385 | 2 | Retainer |
| 7 | 110-6810 | 2 | Stud-Damper | 34 | 32144-1 | 4 | Screw-Taptite |
| 8 | 103-2913 | 2 | Damper-Control, Motion | 35 | 119-8816 | 1 | Rod-Brake, RH |
| 9 | 3296-42 | 8 | Nut-Lock, NI | 36 | 119-8817 | 1 | Rod-Brake, LH |
| 10 | 104-8300 | 10 | Nut-Flange, NI | 37 | 117-1169 | 4 | Spring-Compression |
| 11 | 3256-23 | 2 | Washer-Flat | 38 | 3290-307 | 2 | Pin-Hair |
| 12 | 3256-22 | 4 | Washer-Flat | 39 | 32144-36 | 4 | Screw-PPH |
| 13 | 104-8301 | 4 | Nut-Flange, NI | 40 | 1-603807 | 2 | Spring-Return, Neutral |
| 14 | 119-8925 | 2 | Washer-Belleville | 41 | 119-8859 | 1 | Cover-Brake |
| 15 | 117-1240 | 2 | Washer | 42 | 32144-4 | 1 | Screw-HWH |
| 16 | 119-8832 | 1 | Control-Speed | 43 | 93-6079 | 2 | Spacer-Nylon |
| 17 | 119-3303 | 2 | Pin-Rod, Hydro | 44 | 119-8935 | 1 | RH Knob ASM |
| 19 | 117-1198 | 2 | Bolt-Pivot | 45 | 119-8936 | 1 | LH Knob ASM |
| 20 | 119-3386-03 | 1 | Box-Control | 46 | 94-4496 | 1 | Screw-PPH |
| 21 | 3296-56 | 2 | Nut-Lock, NI | 47 | 3234-47 | 6 | Screw-HHF |
| 22 | 115-5098-05 | 2 | Lever-Control | 48 | 120-5468 | 1 | Decal-Speed Control |
| 23 | 120-2273 | 2 | Washer-Nylon | 49 | 32144-70 | 4 | Screw-HWHTF |
| 24 | 115-9604 | 2 | Eccentric | 50 | 120-5469 | 1 | Decal-HOC |



Seat Assembly

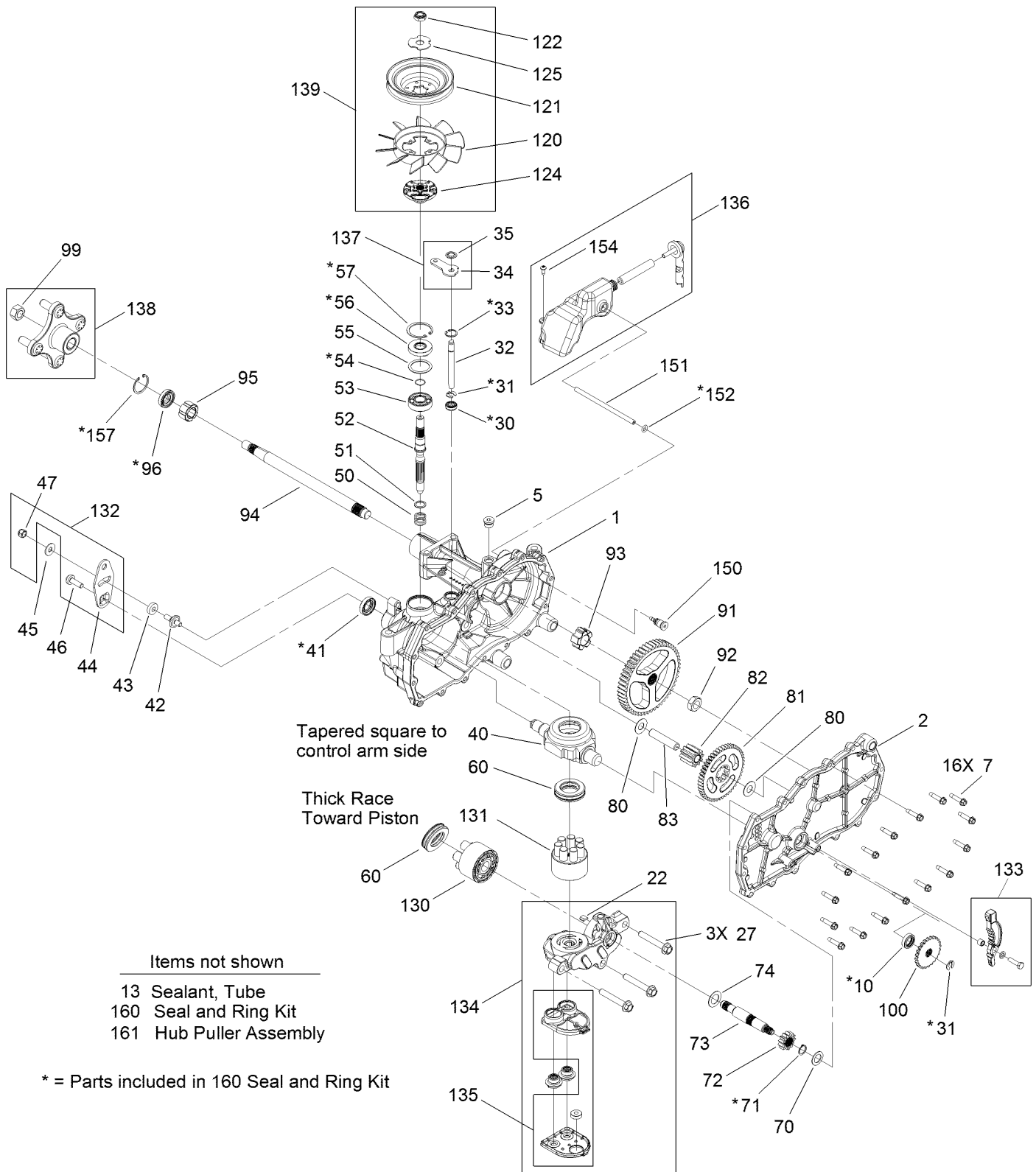
| <i>Ref.</i> | <i>Part Number</i> | <i>Qty.</i> | <i>Description</i> | <i>Ref.</i> | <i>Part Number</i> | <i>Qty.</i> | <i>Description</i> |
|-------------|--------------------|-------------|--------------------|-------------|--------------------|-------------|--------------------|
| 1 | 119-3391-01 | 1 | Pan-Seat | 13 | 119-3431-03 | 2 | Support-Tank, Rear |
| 2 | 119-8828 | 1 | Seat-15 Inch | 14 | 120-5450 | 1 | Decal-Timecutter |
| 3 | 119-3433 | 1 | Rod-Pivot, Narrow | 15 | 119-8972 | 1 | Stop-Seat |
| 5 | 3290-250 | 2 | Pin-Hair | 16 | 106-8717 | 1 | Decal-Service |
| 6 | 92-7054 | 3 | Spring-Compression | 19 | 119-3436-03 | 1 | Support-Pod |
| 7 | 104-8300 | 3 | Nut-Flange, NI | 20 | 32144-70 | 4 | Screw-HWHTF |
| 8 | 5-4460 | 2 | Washer-Pivot | 21 | 3234-29 | 3 | Screw-HHF |
| 9 | 322-2 | 2 | Screw-HH | 22 | 3256-23 | 1 | Washer-Flat |
| 12 | 37-8771 | 2 | Bolt-Shoulder | 23 | 3290-307 | 1 | Pin-Hair |



Hydro Transaxle Drive and Rear Wheel Assembly

| Ref. | Part Number | Qty. | Description | Ref. | Part Number | Qty. | Description |
|------|-------------|------|----------------------|------|-------------|------|-------------------|
| 1 | 119-3331 | 1 | Transaxle-Hydro, RH | 16:2 | 119-3421 | 1 | Tire |
| 2 | 119-3330 | 1 | Transaxle-Hydro, LH | 16:3 | 232-27 | 1 | Stem-Valve |
| 3 | 3230-8 | 1 | Screw-CARR | 17 | 242-50 | 8 | Nut-Lug |
| 4 | 322-11 | 4 | Screw-HH | 18 | 117-7264-03 | 2 | Mount-Hydro |
| 5 | 322-13 | 4 | Screw-HH | 19 | 119-3464 | 2 | Rod-Bypass |
| 6 | 104-8300 | 14 | Nut-Flange, NI | 20 | 324-10 | 4 | Screw-HH |
| 7 | 322-7 | 1 | Screw-HH | 21 | 119-3339-03 | 1 | Cross Plate-Hydro |
| 8 | 104-6415 | 1 | Spring-Return, Pedal | 22 | 3234-29 | 4 | Screw-HHF |
| 9 | 5-4460 | 1 | Washer-Pivot | 23 | 3290-307 | 2 | Pin-Hair |
| 10 | 119-3309 | 1 | V-Belt | 25 | 3256-3 | 1 | Washer-Flat |
| 11 | 119-8822 | 1 | Pulley-Idler | 26 | 3296-48 | 6 | Nut-Lock, NI |
| 12 | 106-2176 | 1 | Pulley-Idler | 27 | 3256-25 | 6 | Washer-Flat |
| 13 | 119-3326 | 1 | Arm-Idler | 28 | 324-8 | 2 | Screw-HH |
| 14 | 119-3353 | 1 | Spacer | 29 | 3256-22 | 2 | Washer-Flat |
| 15 | 119-3327 | 1 | Spacer-Arm, Idler | 30 | 3256-23 | 4 | Washer-Flat |
| 16 | 119-3422 | 2 | Wheel And Tire ASM | | | | |

Right Hand Hydro Transaxle Assembly No. 119-3331



Items not shown

- 13 Sealant, Tube
- 160 Seal and Ring Kit
- 161 Hub Puller Assembly

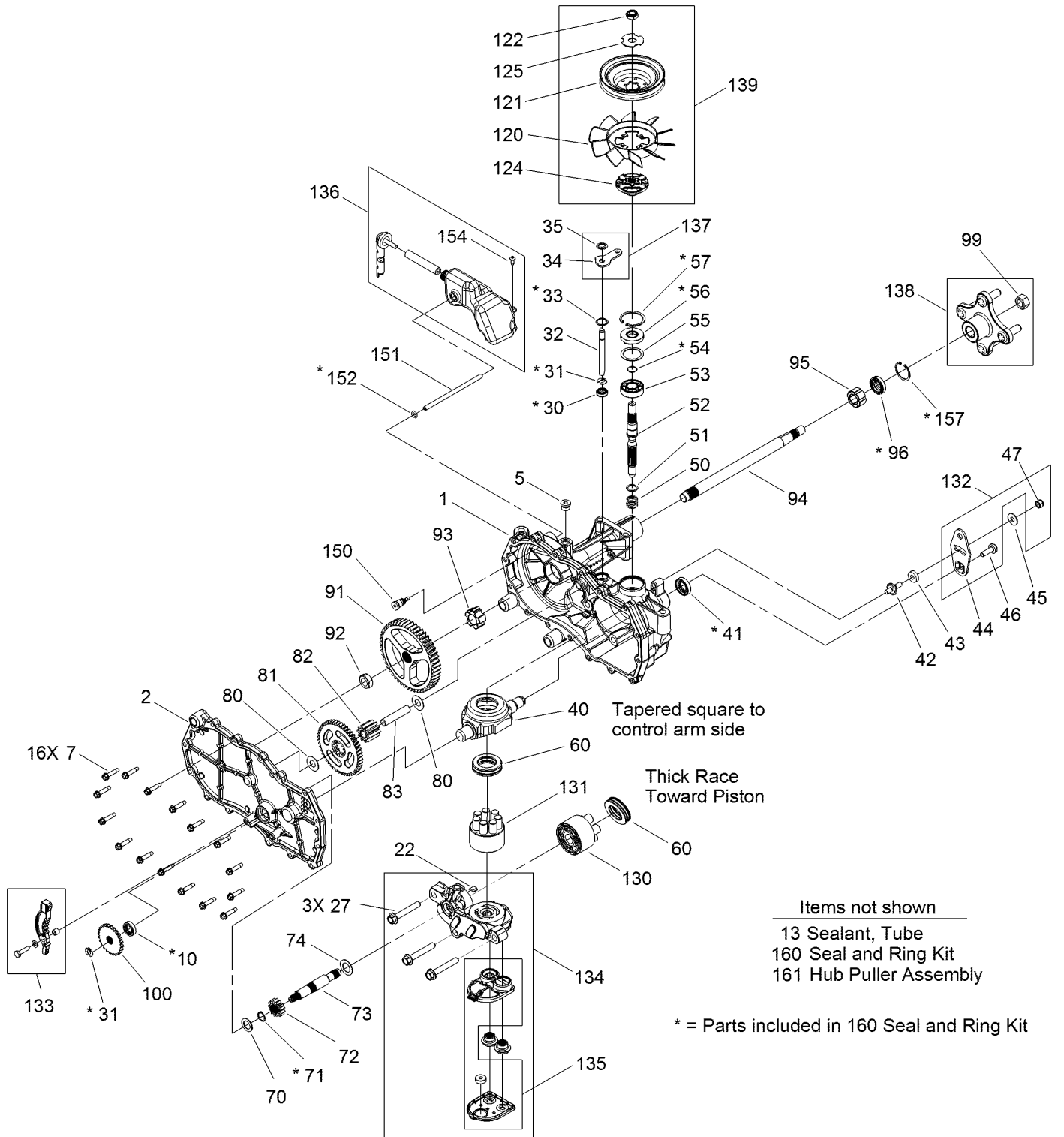
* = Parts included in 160 Seal and Ring Kit

Right Hand Hydro Transaxle Assembly No. 119-3331 (continued)

| <i>Ref.</i> | <i>Part Number</i> | <i>Qty.</i> | <i>Description</i> | <i>Ref.</i> | <i>Part Number</i> | <i>Qty.</i> | <i>Description</i> |
|-------------|--------------------|-------------|-----------------------|-------------|--------------------|-------------|---------------------------|
| 1 | 120-5531 | 1 | Main Housing ASM | 74 | 104-5360 | 1 | Washer-Shaft, Motor |
| 2 | 120-5533 | 1 | Housing Side Kit | 80 | 119-5541 | 2 | Washer |
| 5 | 104-2189 | 1 | Plug-Thread, Straight | 81 | 104-5317 | 1 | Gear |
| 7 | 117-5359 | 16 | Screw-Hfhcs | 82 | 104-5318 | 1 | Gear-Jackshaft, 10T |
| 10 | 120-5535 | 1 | Seal-Lip | 83 | 104-5329 | 1 | Pin-Jackshaft |
| 13 | 104-2147 | 1 | Sealant ● | 91 | 120-5539 | 1 | Gear-Bull |
| 22 | 114-1680 | 1 | Plate-Bypass | 92 | 104-2142 | 1 | Nut-HJ |
| 27 | 120-5536 | 3 | Bolt-Hex Flange | 93 | 115-8314 | 1 | Bushing-Inboard |
| 30 | 106-8676 | 1 | Seal-Lip | 94 | 120-5540 | 1 | Shaft-Axle |
| 31 | 106-8677 | 1 | Ring-Retaining, EXT | 95 | 120-5541 | 1 | Bearing-Sleeve |
| 32 | 106-8678 | 2 | Rod-Bypass | 96 | 120-5542 | 1 | Seal-Lip |
| 33 | 106-8679 | 1 | Ring-Retaining, Int | 99 | 120-5543 | 1 | Nut-Hex Lock |
| 34 | 107-2490 | 1 | Arm-Bypass | 100 | 106-8694 | 1 | Disc-Brake, Cog |
| 35 | 106-8681 | 1 | Ring-Retaining, EXT | 120 | 120-5544 | 1 | Fan-6 Inch |
| 40 | 104-5304 | 1 | Swashplate-Trunnion | 121 | 120-5545 | 1 | Pulley |
| 41 | 104-5313 | 1 | Seal-Lip | 122 | 105-1875 | 1 | Nut-Lock |
| 42 | 104-2116 | 1 | Stud | 124 | 120-5546 | 1 | Hub |
| 43 | 112-9853 | 1 | Puck-Friction | 125 | 107-9122 | 1 | Washer-Slotted |
| 44 | 106-8747 | 1 | Arm-Control | 130 | 103-2666 | 1 | Cylinder Block Kit |
| 45 | 114-8491 | 1 | Washer | 131 | 110-8561 | 1 | Pump Block ASM |
| 46 | 107-2488 | 1 | Screw | 132 | 117-5362 | 1 | Arm Control Kit |
| 47 | 105-1872 | 1 | Nut | 133 | 106-8688 | 1 | Brake Arm Kit |
| 50 | 120-5537 | 1 | Spring-Compression | 134 | 112-9862 | 1 | Center Section Filter Kit |
| 51 | 120-5538 | 1 | Washer | 135 | 114-1634 | 1 | Filter Kit |
| 52 | 104-5306 | 1 | Shaft-Input | 136 | 120-5547 | 1 | Expansion Tank Kit |
| 53 | 104-5311 | 1 | Bearing-Ball | 137 | 107-2489 | 1 | Bypass Arm Kit |
| 54 | 104-5307 | 1 | Ring-Retaining | 138 | 120-7101 | 1 | Hub Kit |
| 55 | 104-5308 | 1 | Spacer | 139 | 105-1928 | 1 | Fan Pulley Kit |
| 56 | 104-5310 | 1 | Seal-Lip | 150 | 104-5349 | 1 | Fitting-Sae |
| 57 | 104-5309 | 1 | Ring-Retaining | 151 | 115-8302 | 1 | Hose |
| 60 | 94-6922 | 1 | Bearing-Thrust | 152 | 104-5361 | 1 | O-Ring |
| 70 | 104-5339 | 1 | Washer-Flat | 154 | 120-7100 | 1 | Bolt-Self Tapping |
| 71 | 104-5340 | 1 | Ring-Retaining | 157 | 120-7102 | 1 | Ring-Retaining |
| 72 | 104-5316 | 1 | Gear-Pinnion, 13T | 160 | 120-7103 | 1 | Seal And Ring Kit ● |
| 73 | 106-8683 | 1 | Shaft-Motor | 161 | 114-8467 | 1 | Hub-Puller, 4 Bolt ● |

● Not illustrated

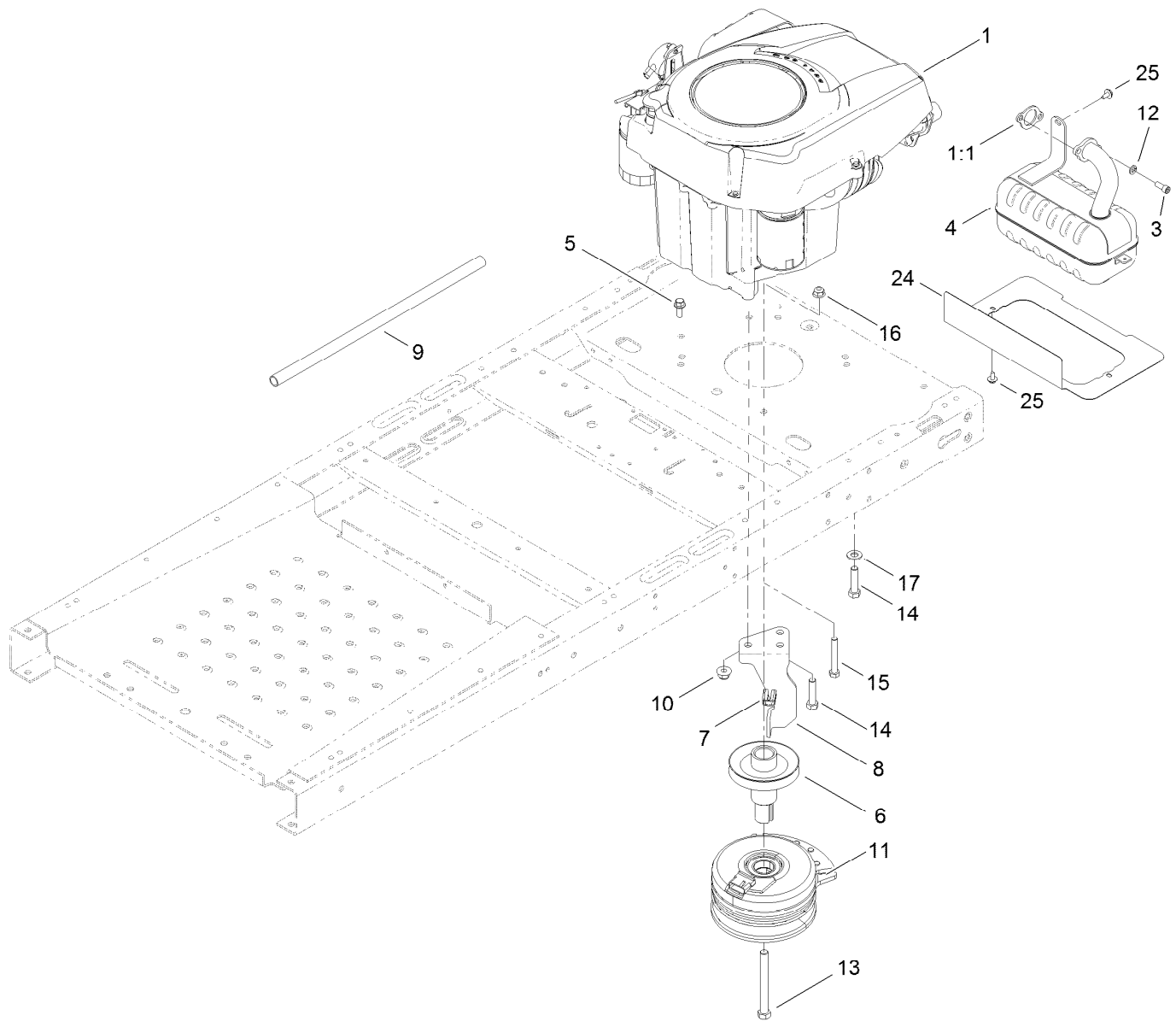
Left Hand Hydro Transaxle Assembly No. 119-3330



Left Hand Hydro Transaxle Assembly No. 119-3330 (continued)

| <i>Ref.</i> | <i>Part Number</i> | <i>Qty.</i> | <i>Description</i> | <i>Ref.</i> | <i>Part Number</i> | <i>Qty.</i> | <i>Description</i> |
|-------------|--------------------|-------------|-----------------------|-------------|--------------------|-------------|---------------------------|
| 1 | 120-5532 | 1 | RH Main Housing ASM | 74 | 104-5360 | 1 | Washer-Shaft, Motor |
| 2 | 120-5534 | 1 | RH Housing Side Kit | 80 | 119-5541 | 2 | Washer |
| 5 | 104-2189 | 1 | Plug-Thread, Straight | 81 | 104-5317 | 1 | Gear |
| 7 | 117-5359 | 16 | Screw-Hfhcs | 82 | 104-5318 | 1 | Gear-Jackshaft, 10T |
| 10 | 120-5535 | 1 | Seal-Lip | 83 | 104-5329 | 1 | Pin-Jackshaft |
| 13 | 104-2147 | 1 | Sealant ● | 91 | 120-5539 | 1 | Gear-Bull |
| 22 | 114-1680 | 1 | Plate-Bypass | 92 | 104-2142 | 1 | Nut-HJ |
| 27 | 120-5536 | 3 | Bolt-Hex Flange | 93 | 115-8314 | 1 | Bushing-Inboard |
| 30 | 106-8676 | 1 | Seal-Lip | 94 | 120-5540 | 1 | Shaft-Axle |
| 31 | 106-8677 | 1 | Ring-Retaining, EXT | 95 | 120-5541 | 1 | Bearing-Sleeve |
| 32 | 106-8678 | 2 | Rod-Bypass | 96 | 120-5542 | 1 | Seal-Lip |
| 33 | 106-8679 | 1 | Ring-Retaining, Int | 99 | 120-5543 | 1 | Nut-Hex Lock |
| 34 | 107-2490 | 1 | Arm-Bypass | 100 | 106-8694 | 1 | Disc-Brake, Cog |
| 35 | 106-8681 | 1 | Ring-Retaining, EXT | 120 | 120-5544 | 1 | Fan-6 Inch |
| 40 | 104-5304 | 1 | Swashplate-Trunnion | 121 | 120-5545 | 1 | Pulley |
| 41 | 104-5313 | 1 | Seal-Lip | 122 | 105-1875 | 1 | Nut-Lock |
| 42 | 104-2116 | 1 | Stud | 124 | 120-5546 | 1 | Hub |
| 43 | 112-9853 | 1 | Puck-Friction | 125 | 107-9122 | 1 | Washer-Slotted |
| 44 | 106-8747 | 1 | Arm-Control | 130 | 103-2666 | 1 | Cylinder Block Kit |
| 45 | 114-8491 | 1 | Washer | 131 | 110-8561 | 1 | Pump Block ASM |
| 46 | 107-2488 | 1 | Screw | 132 | 117-5362 | 1 | Arm Control Kit |
| 47 | 105-1872 | 1 | Nut | 133 | 106-8688 | 1 | Brake Arm Kit |
| 50 | 120-5537 | 1 | Spring-Compression | 134 | 112-9861 | 1 | Center Section Filter Kit |
| 51 | 120-5538 | 1 | Washer | 135 | 114-1634 | 1 | Filter Kit |
| 52 | 104-5306 | 1 | Shaft-Input | 136 | 120-5548 | 1 | Expansion Tank Kit |
| 53 | 104-5311 | 1 | Bearing-Ball | 137 | 107-2489 | 1 | Bypass Arm Kit |
| 54 | 104-5307 | 1 | Ring-Retaining | 138 | 120-7101 | 1 | Hub Kit |
| 55 | 104-5308 | 1 | Spacer | 139 | 105-1928 | 1 | Fan Pulley Kit |
| 56 | 104-5310 | 1 | Seal-Lip | 150 | 104-5349 | 1 | Fitting-Sae |
| 57 | 104-5309 | 1 | Ring-Retaining | 151 | 115-8302 | 1 | Hose |
| 60 | 94-6922 | 1 | Bearing-Thrust | 152 | 104-5361 | 1 | O-Ring |
| 70 | 104-5339 | 1 | Washer-Flat | 154 | 120-7100 | 1 | Bolt-Self Tapping |
| 71 | 104-5340 | 1 | Ring-Retaining | 157 | 120-7102 | 1 | Ring-Retaining |
| 72 | 104-5316 | 1 | Gear-Pinnion, 13T | 160 | 120-7103 | 1 | Seal And Ring Kit ● |
| 73 | 106-8683 | 1 | Shaft-Motor | 161 | 114-8467 | 1 | Hub-Puller, 4 Bolt ● |

● Not illustrated



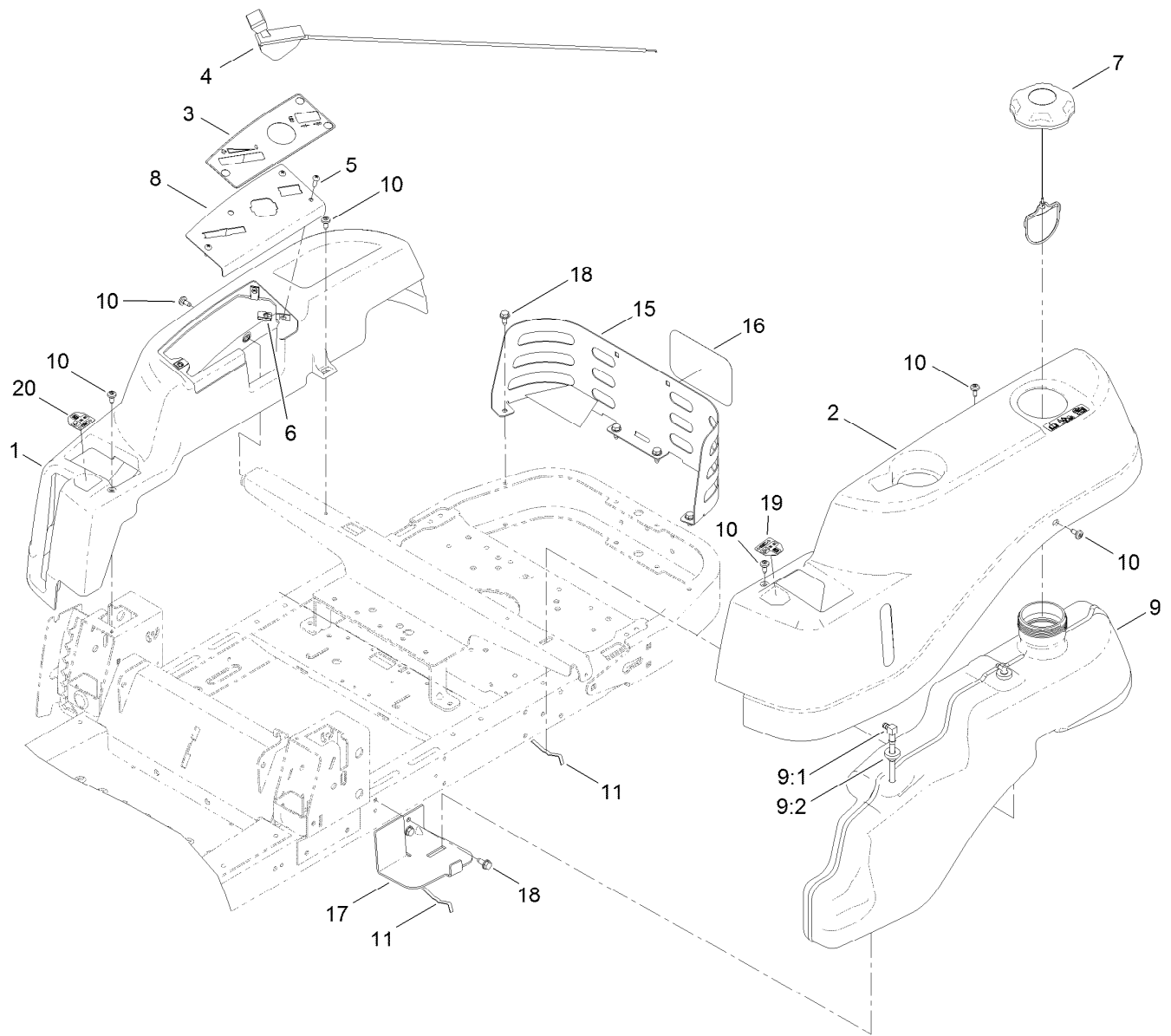
Engine, Muffler and Clutch Assembly

| Ref. | Part Number | Qty. | Description |
|------|-------------|------|----------------------------------|
| 1 | | 1 | Engine-Kohler, Sv470-3222 ● ■ |
| 1:1 | 110-6696 | 1 | Gasket-Exhaust |
| 3 | 3274-10 | 2 | Screw-HSH |
| 4 | 117-7312 | 1 | Muffler-Kohler |
| 5 | 3234-42 | 1 | Screw-HHF |
| 6 | 119-3318 | 1 | Pulley-Engine |
| 7 | 120-2217 | 1 | Isolator-Clutch |
| 8 | 119-8884 | 1 | Stop-Clutch |
| 9 | 106-7022 | 1 | Tube-Drain, Oil |

| Ref. | Part Number | Qty. | Description |
|------|-------------|------|-----------------|
| 10 | 104-8301 | 1 | Nut-Flange, NI |
| 11 | 117-7468 | 1 | Clutch-Electric |
| 12 | 3253-4 | 2 | Washer-Lock |
| 13 | 3212-16 | 1 | Screw-HH |
| 14 | 32144-109 | 3 | Screw |
| 15 | 322-11 | 1 | Screw-HH |
| 16 | 104-8300 | 1 | Nut-Flange, NI |
| 17 | 3256-24 | 3 | Washer-Flat |
| 24 | 119-8976-03 | 1 | Shield-Heat |
| 25 | 46-8560 | 3 | Screw-HHFTF |

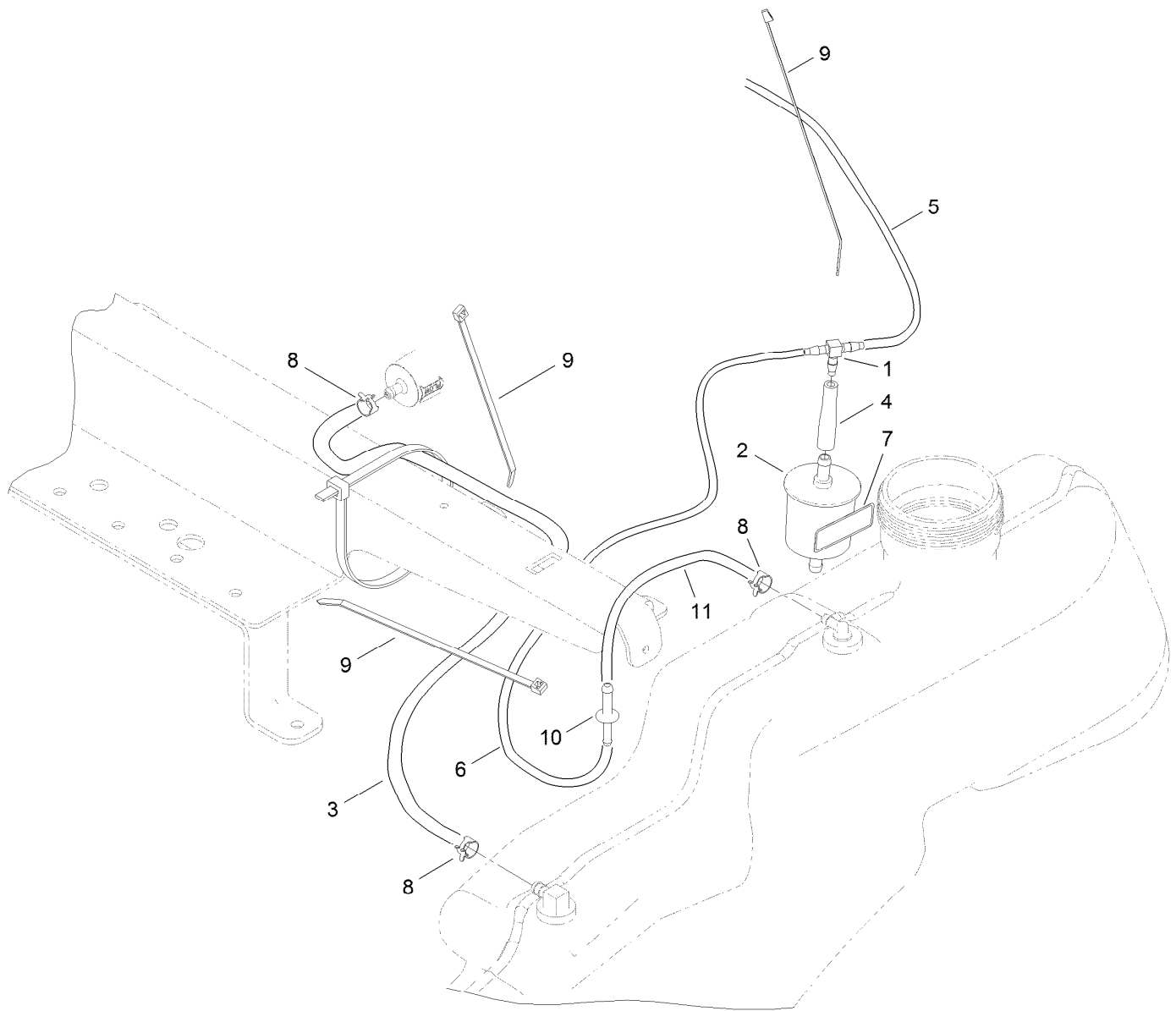
● Not serviced separately

■ Obtain parts from www.kohlerplus.com



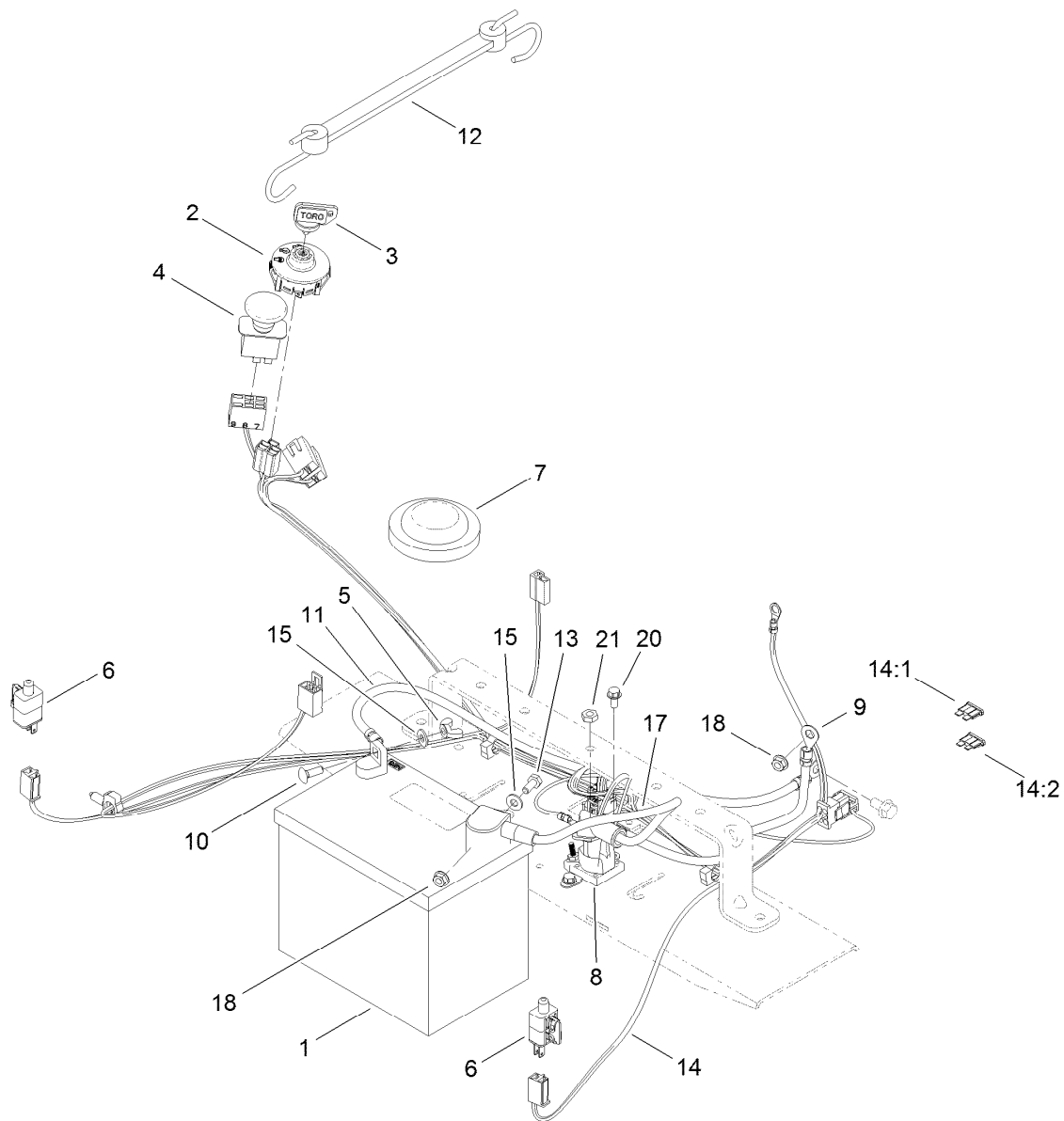
Body Styling and Fuel Pod Assembly

| <i>Ref.</i> | <i>Part Number</i> | <i>Qty.</i> | <i>Description</i> | <i>Ref.</i> | <i>Part Number</i> | <i>Qty.</i> | <i>Description</i> |
|-------------|--------------------|-------------|----------------------|-------------|--------------------|-------------|-------------------------|
| 1 | 119-3335 | 1 | Pod-RH | 9:2 | 46-6560 | 2 | Bushing |
| 2 | 119-3334 | 1 | Pod-LH | 10 | 112-4004 | 6 | Screw-Shoulder |
| 3 | 119-3468 | 1 | Decal-Panel, Control | 11 | 609830 | 2 | Spring |
| 4 | 104-3626 | 1 | Cable-Throttle | 15 | 119-8855-03 | 1 | Guard-Rear |
| 5 | 3258-166 | 3 | Screw-PRH | 16 | 105-8278 | 1 | Decal |
| 6 | 107069 | 3 | Clip | 17 | 119-3476-03 | 1 | Support-Tank, Front |
| 7 | 120-5461 | 1 | Cap-Fuel, Ratcheting | 18 | 32144-70 | 6 | Screw-HWHTF |
| 8 | 119-3378-03 | 1 | Plate-Control | 19 | 119-8814 | 1 | Decal-Control Lever, LH |
| 9 | 119-3324 | 1 | Fuel Tank ASM | 20 | 119-8815 | 1 | Decal-Control Lever, RH |
| 9:1 | 115-2564 | 1 | Tube-Drop | | | | |



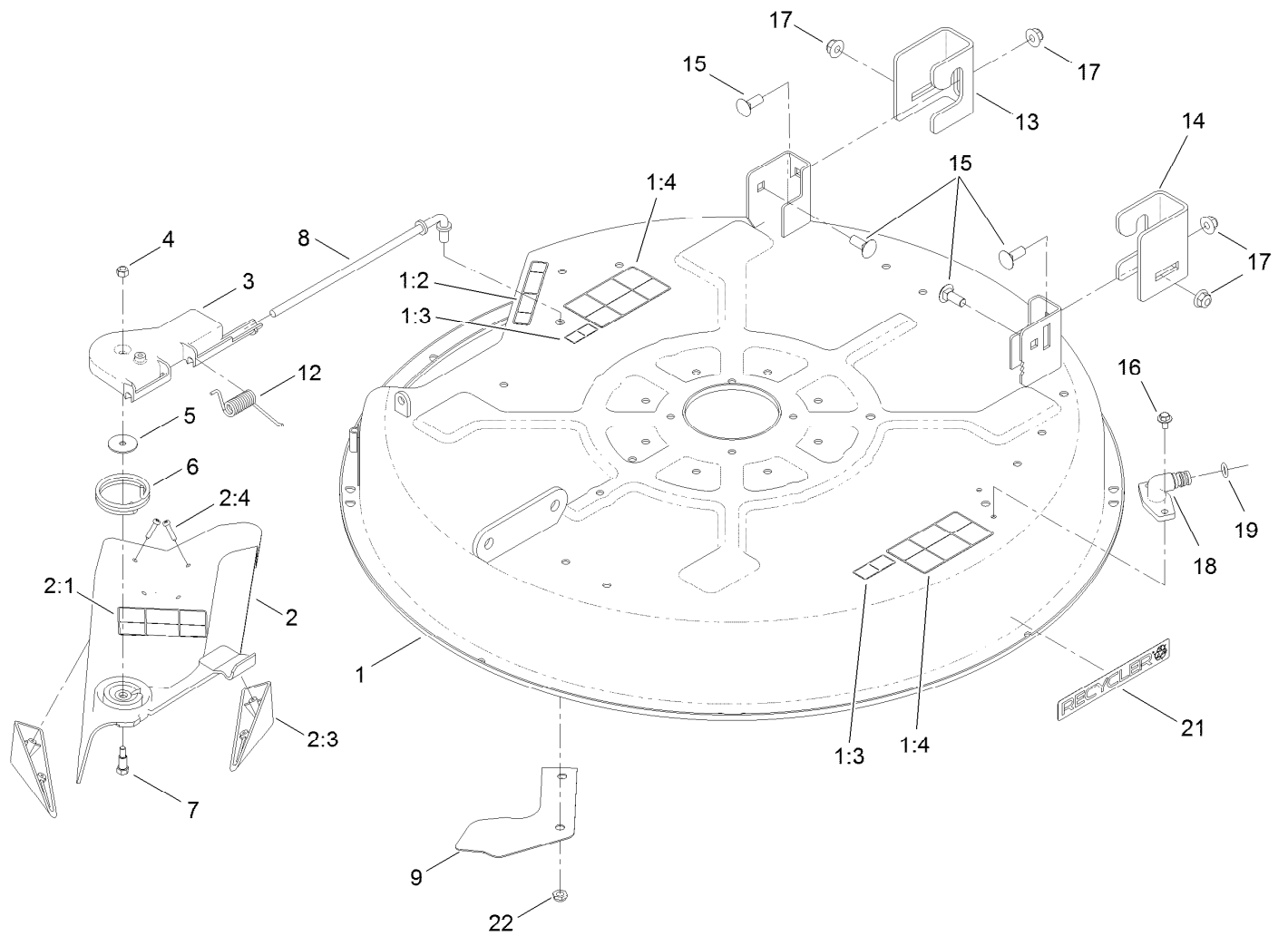
Fuel Delivery Assembly

| <i>Ref.</i> | <i>Part Number</i> | <i>Qty.</i> | <i>Description</i> |
|-------------|--------------------|-------------|-------------------------|
| 1 | 120-2234 | 1 | Fitting-Tee |
| 2 | 120-2235 | 1 | Filter-Air |
| 3 | 110-5702 | 1 | Hose-Fuel |
| 4 | 120-2272 | 1 | Hose-Fuel, Molded |
| 5 | 119-8511 | 1 | Hose-Fuel |
| 6 | 51-3214 | 1 | Hose-Fuel |
| 7 | 116-4769 | 1 | Decal-Filter, Emissions |
| 8 | 2412-98 | 3 | Clamp |
| 9 | 614249 | 3 | Strap-Tie |
| 10 | 117-5399 | 1 | Adaptor-Orifice |
| 11 | 110-1876 | 1 | Hose-Fuel |



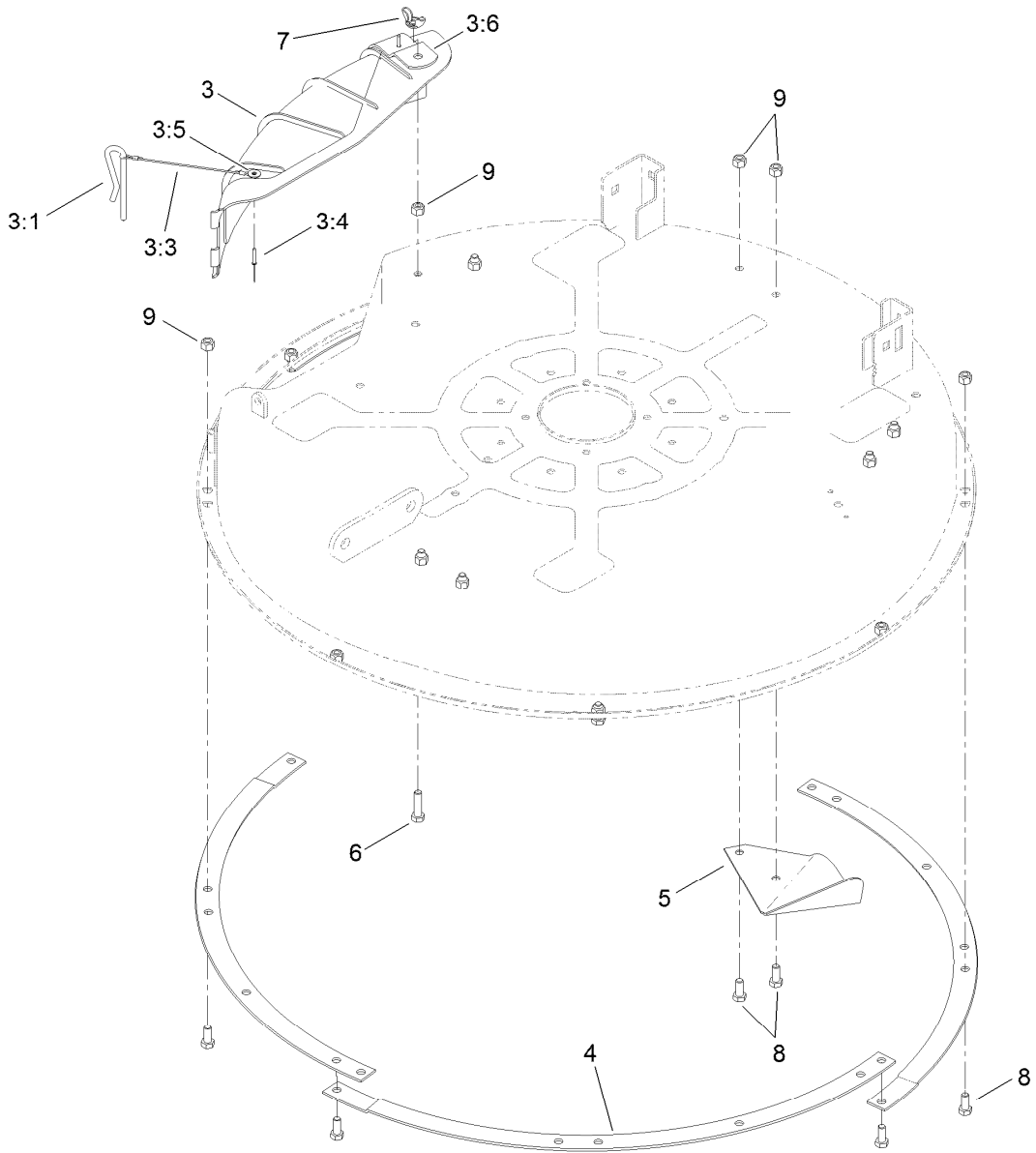
Electrical Assembly

| <i>Ref.</i> | <i>Part Number</i> | <i>Qty.</i> | <i>Description</i> | <i>Ref.</i> | <i>Part Number</i> | <i>Qty.</i> | <i>Description</i> |
|-------------|--------------------|-------------|-----------------------|-------------|--------------------|-------------|--------------------|
| 1 | 104-2493 | 1 | Battery | 12 | 104-2466 | 1 | Holddown-Battery |
| 2 | 117-2221 | 1 | Switch-Ignition | 13 | 321-3 | 1 | Screw-HH |
| 3 | 63-8360 | 1 | Key-Ignition | 14 | 119-3343 | 1 | Harness-Wire |
| 4 | 93-9998 | 1 | Switch-PTO | 14:1 | 109103 | 1 | Fuse-Blade, 30 Amp |
| 5 | 32103-22 | 1 | Nut-Wing | 14:2 | 109102 | 1 | Fuse-Blade, 25 Amp |
| 6 | 110-6765 | 2 | Switch-Single Pole No | 15 | 3256-22 | 2 | Washer-Flat |
| 7 | 100-3524 | 1 | Switch-Seat | 17 | 119-8897 | 1 | Cable-Battery, Red |
| 8 | 117-1197 | 1 | Solenoid | 18 | 32128-33 | 2 | Nut-HF |
| 9 | 119-8898 | 1 | Cable-Battery, Red | 20 | 32144-4 | 2 | Screw-HWH |
| 10 | 3229-1 | 1 | Screw-CARR | 21 | 3220-2 | 2 | Nut-Jam |
| 11 | 119-8899 | 1 | Cable-Battery, Black | | | | |



32 Inch Deck Assembly

| Ref. | Part Number | Qty. | Description | Ref. | Part Number | Qty. | Description |
|------|-------------|------|----------------------------|------|-------------|------|--------------------|
| 1 | 119-8839 | 1 | 32 Inch Deck And Decal ASM | 7 | 92-8916 | 1 | Bolt-Shoulder |
| 1:2 | 93-7009 | 1 | Decal-Danger, Deflector | 8 | 119-8858 | 1 | Rod-Pivot |
| 1:3 | 114-1606 | 2 | Decal-Danger, Pulley | 9 | 119-8877-03 | 1 | Ramp-Deflector |
| 1:4 | 110-6691 | 2 | Decal-Danger | 12 | 92-2493 | 1 | Spring-Torsion |
| 2 | 120-2298 | 1 | 32 Inch Deflector ASM | 13 | 119-3494 | 1 | Bracket-Hanger, RH |
| 2:1 | 110-6691 | 1 | Decal-Danger | 14 | 119-3496 | 1 | Bracket-Hanger, LH |
| 2:3 | 93-7696 | 2 | Kicker | 15 | 3231-2 | 4 | Screw-CARR |
| 2:4 | 93-0231 | 4 | Screw-PPH | 16 | 46-8560 | 2 | Screw-HHFTF |
| 3 | 88-4540 | 1 | Pivot-Hinge, Deflector | 17 | 104-8301 | 4 | Nut-Flange, NI |
| 4 | 3296-42 | 1 | Nut-Lock, NI | 18 | 95-2747 | 1 | Fitting-Washout |
| 5 | 3256-58 | 1 | Washer-Flat | 19 | 46-6290 | 1 | O-Ring, Seal |
| 6 | 88-6160 | 1 | Spring-Torsion | 21 | 119-2368 | 1 | Decal-Recycler |
| | | | | 22 | 3296-59 | 1 | Nut-Lock, NI |



32 Inch Deck Baffle Assembly

| Ref. | Part Number | Qty. | Description |
|------|-------------|------|---------------------|
| 3 | 82-6151 | 1 | Discharge Cover ASM |
| 3:1 | 28-8130 | 1 | Pin-Locking, Chute |
| 3:3 | 28-8070 | 1 | Lanyard |
| 3:4 | 3290-282 | 2 | Rivet-Blind |
| 3:5 | 3256-49 | 1 | Washer-Flat |
| 3:6 | 83-7010-03 | 1 | Brace |
| 4 | 80-4490-03 | 4 | Ring-Deck |
| 5 | 80-2630-03 | 4 | Kicker |
| 6 | 322-6 | 1 | Screw-HH |
| 7 | 32103-2 | 1 | Nut-Wing |
| 8 | 322-3 | 15 | Screw-HH |
| 9 | 3296-29 | 16 | Nut-Lock, NI |

Attachments and Accessories

For 74385 TimeCutter ZS 3200 Riding Mower

| Product Name | Model/Part |
|--|-------------------|
| Hourmeter Kit, 2011 and After TimeCutter Riding Mower | 120-5498 |
| Foot Assist Deck Lift Kit, 2011 and After Zero-Turn-Radius Riding Mower | 79010 |
| Sunshade Kit, 2011 and After Zero-Turn-Radius Riding Mower | 79011 |
| Hitch Kit, Zero-Turn-Radius Riding Mower..... | 79014 |
| Floor Mat Kit, 2011 and After Zero-Turn-Radius Riding Mower w/ 32in or 42in Cutting Unit | 79020 |
| Storage Cover | 79317 |
| 32in Bagger, 2011 and After TimeCutter 3000 Series Riding Mower | 79333 |
| 10 cu. ft. Poly Dump Cart | 79991 |



Count on it.