



Case Drain Hose Kit

Reelmaster® 3100-D Traction Unit

Model No. 119-2014

Installation Instructions

Installation

1

Draining the Hydraulic Reservoir

No Parts Required

Procedure

1. Park the machine on a level surface, lower the cutting units, set the parking brake, turn the engine off and remove the key from the ignition switch.
2. Disconnect the hose from the fitting on the bottom of the hydraulic filter adapter (Figure 1) and drain the hydraulic oil into a large clean container for re-use. Re-install the hose to the fitting after all the oil has been drained.

Important: Take care not to contaminate oil if you are going to reuse it. A very small amount of dirt or debris can severely damage hydraulic system.

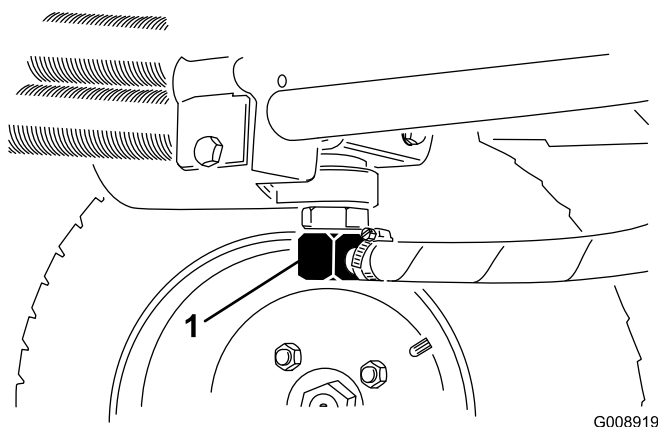


Figure 1

1. Fitting

2

Installing the Case Drain Hose Kit

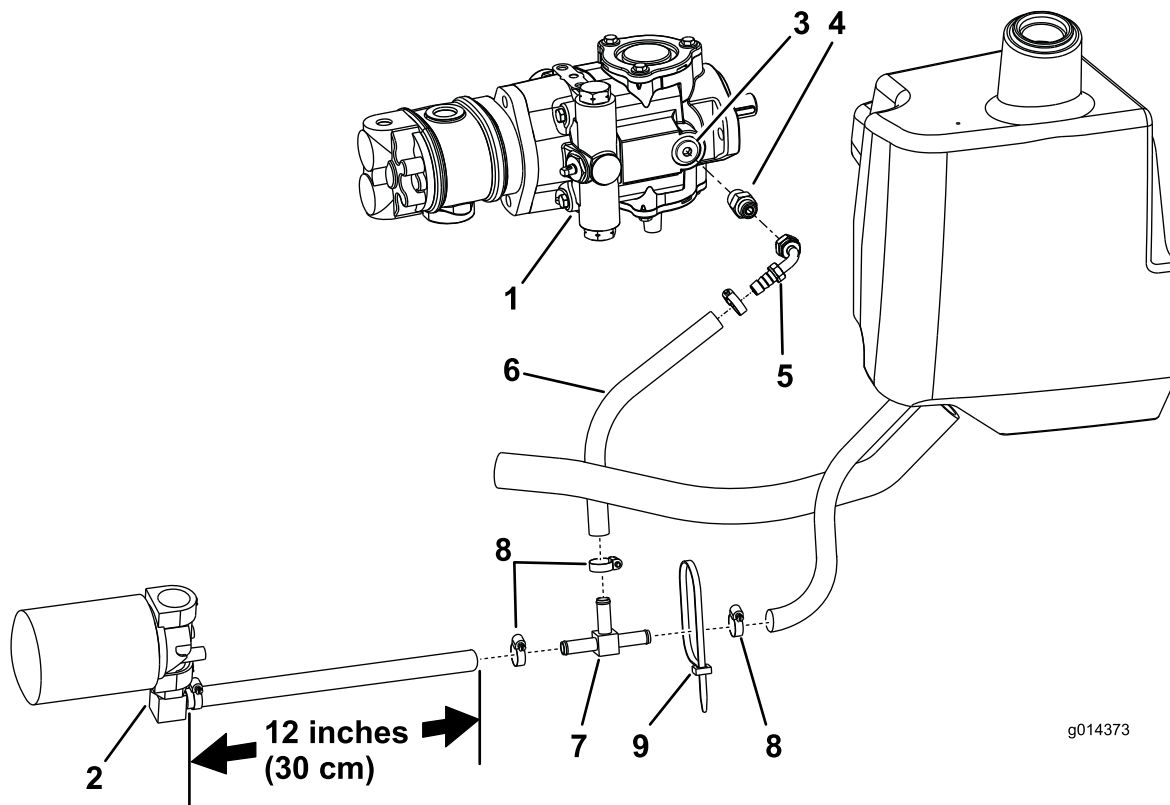
Parts needed for this procedure:

1	Hose
1	90 degree fitting
1	Tee fitting
1	Adapter fitting
1	O-ring
1	O-ring
4	Hose clamp
2	Cable tie

Procedure

1. Remove the plug from the side of the pump (Figure 2).
2. Install the adapter fitting to the pump (Figure 2).

Note: Before installing any hydraulic fittings or hoses, make sure the correct O-rings are in position and lubricated.
3. Install the 90 degree fitting to the adapter fitting, positioning as shown in Figure 2.
4. Connect the hose, included in the kit, to the 90 degree fitting and secure it with a hose clamp (Figure 2).
5. Measure 12 inches (30 cm) from the end of the hose which is connected to the fitting on the bottom of the hydraulic filter adapter. Cut the hose at this point.
6. Install the cut hose ends onto the tee fitting and secure the hose to the tee fitting with hose clamps (Figure 2).
7. Connect the new hose to the tee fitting and secure it with a hose clamp (Figure 2).



g014373

Figure 2

- | | | |
|-------------------------------------|----------------------|----------------|
| 1. Pump | 4. Adapter | 7. Tee fitting |
| 2. Hydraulic filter adapter fitting | 5. 90 degree fitting | 8. Hose clamp |
| 3. Plug | 6. New hose | 9. Cable tie |

3

Completing the Installation

No Parts Required

Procedure

1. Check the position of each fitting and tighten securely. Use a back up wrench on the fittings when appropriate.
2. Secure the hoses with cable ties.

Important: Check to make sure the hoses are secured away from any hot, sharp or moving components.

3. Fill the hydraulic reservoir with the proper hydraulic oil. Refer to the Operator's Manual for the oil specifications.
4. Carefully operate all the machines hydraulic functions to ensure that nothing contacts the hoses or fittings.

Make any required adjustments to the hoses or fittings.

5. Check the hydraulic oil again and replenish if required.