



**Count on it.**

**Parts Catalog**

**Z580 Z Master®**

**With 72in TURBO FORCE® Side Discharge  
Mower**

**Model No. 74254—Serial No. 290000001 and Up**

# Ordering Replacement Parts

To order replacement parts, please supply the part number, the quantity, and the description of each part desired.

## Understanding Reference Numbers

Each identified part in an illustration has a reference number. The reference number for a part also appears in the parts list, along with other information about the part.

This catalog uses two special reference number formats, one to indicate parts in a service assembly and another to indicate the quantity of a given part in an illustration.

## Service Assembly Reference Numbers

Parts in service assemblies have reference numbers in the form a:b. The a represents the reference number of the entire service assembly and the b represents a sequential number unique to each part within the service assembly.

For example, a wheel assembly might be identified by reference number 6, the tire by 6:1, the valve by 6:2, and the wheel by 6:3. When you order the assembly identified by reference number 6, you receive all parts identified by reference numbers 6:1, 6:2, and 6:3. However, you may also order any part individually. Reference numbers of this type appear in illustration and in parts lists.

## Reference Numbers Indicating Quantity

In an illustration, if a reference number indicates more than one part, the reference number has the form nX y. The n represents the quantity of the part, the X is the multiplication symbol, and the y represents the reference number.

For example, in an illustration, the reference number 2X 37 means that two of the parts identified by reference number 37 are indicated.

# List of Abbreviations

**AR:** as required

**ASM:** assembly

**BBC:** blade brake control

**BHTF:** button head thread forming

**CARR:** carriage

**CCW:** counter clockwise

**CW:** clockwise

**DEG:** degrees

**ECM:** electronic control module

**EXT:** external

**FH:** flat head

**GA:** gauge

**HD:** heavy-duty

**HF:** hex flange

**HH:** hex head

**HHF:** hex head flange

**HHFTF:** hex head flange thread forming

**HJ:** hex jam

**HLH:** hex lag head

**HOC:** height-of-cut

**HSBH:** hex socket button head

**HSFH:** hex socket flat head

**HSH:** hex socket head

**HWH:** hex washer head

**HWHTF:** hex washer head thread forming

**HYD:** hydraulic

**LH:** left hand

**LP:** Liquid Propane

**NI:** nylon insert

**NPTF:** national pipe thread fine

**PFH:** phillips flat head

**PPH:** phillips pan head

**PPHTF:** phillips pan head thread forming

**PRH:** phillips round head

**PTH:** phillips truss head

**PTO:** power-take-off

**RH:** right hand

**ROPS:** roll-over protection system

**RRB:** rear roller brush

**SFH:** slotted fillister head

**SHH:** slotted hex head

**SHWH:** slotted hex washer head

**SPH:** slotted pan head

**SQH:** square head

**SRH:** slotted round head

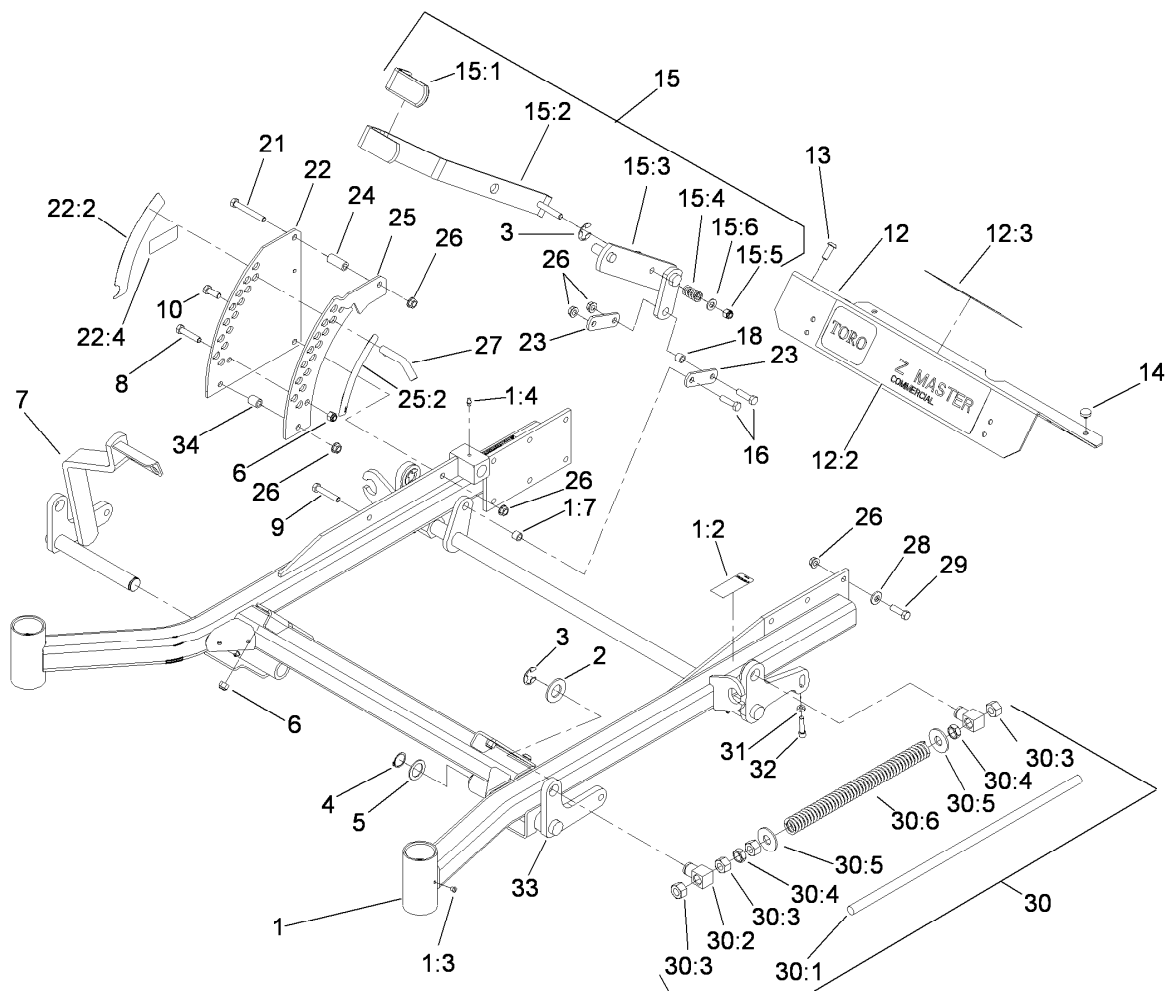
**STD:** standard

**TAP:** self tapping

**TTH:** torx truss head

# Contents

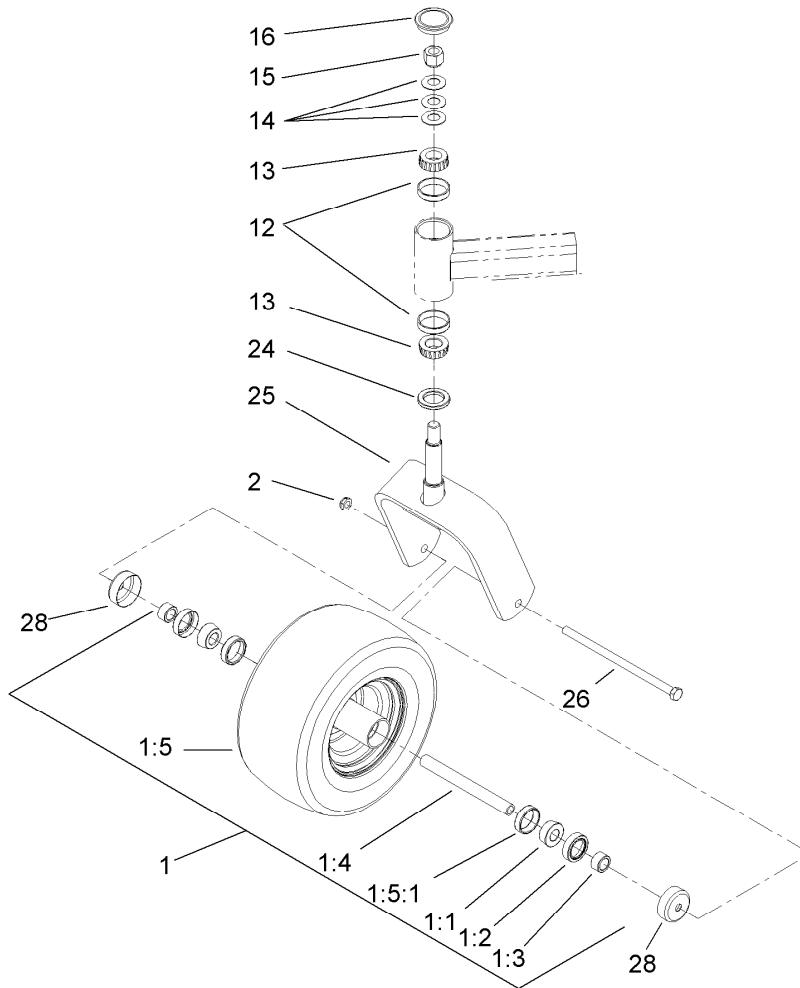
Front Frame Assembly .....	4
Fork and Caster Wheel Assembly .....	5
Traction Frame and Floor Pan Assembly .....	6
Seat and Roll-Over Protection System Assembly .....	7
Seat Assembly No. 116-0035 .....	8
Roll-Over Protection System Assembly No. 117-3866 .....	9
Main Frame and Rear Wheel Assembly .....	10
Hydro Control Assembly .....	11
Engine, Muffler and Air Cleaner Assembly .....	12
Air Cleaner Assembly No. 95-5805 .....	13
Hydro and Gearbox Assembly .....	14
90 Degree Gearbox Assembly No. 110-5771 .....	15
Hydraulic Tank, Motor and Pump Assembly .....	16
Tandem Pump Assembly No. 110-5757 .....	17
Hydraulic Motor Assembly No. 112-8357 (CCW) .....	18
Hydraulic Motor Assembly No. 112-8358 (CW) .....	19
Hydraulic Hose Routing Assembly .....	20
Fuel System and Throttle Control Assembly .....	21
Fuel Line Assembly .....	22
Engine Housing Assembly .....	23
Cooling System Assembly .....	24
Hood Assembly .....	25
Deck Connection Assembly .....	26
Deck Assembly .....	27
Spindle Assembly No. 110-3933 .....	29
Deck Decal Assembly No.114-4483 .....	30
Rubber Deflector Assembly No. 108-2792 .....	31
Lever Assembly No. 107-1664 .....	32
Electrical Assembly .....	33
Cylinder and Crankcase Assembly Kawasaki FD791D-AS07 .....	34
Piston and Crankshaft Assembly Kawasaki FD791D-AS07 .....	35
Valve and Camshaft Assembly Kawasaki FD791D-AS07 .....	36
Lubrication Equipment Assembly Kawasaki FD791D-AS07 .....	37
Cooling Equipment Assembly Kawasaki FD791D-AS07 .....	38
Electric Equipment Assembly Kawasaki FD791D-AS07 .....	39
Control Equipment Assembly Kawasaki FD791D-AS07 .....	40
Throttle Assembly Kawasaki FD791D-AS07 .....	41
Air Filter and Muffler Assembly Kawasaki FD791D-AS07 .....	42
Fuel Tank and Valve Assembly Kawasaki FD791D-AS07 .....	43
Starter Assembly Kawasaki FD791D-AS07 .....	44
Attachments and Accessories .....	45



## Front Frame Assembly

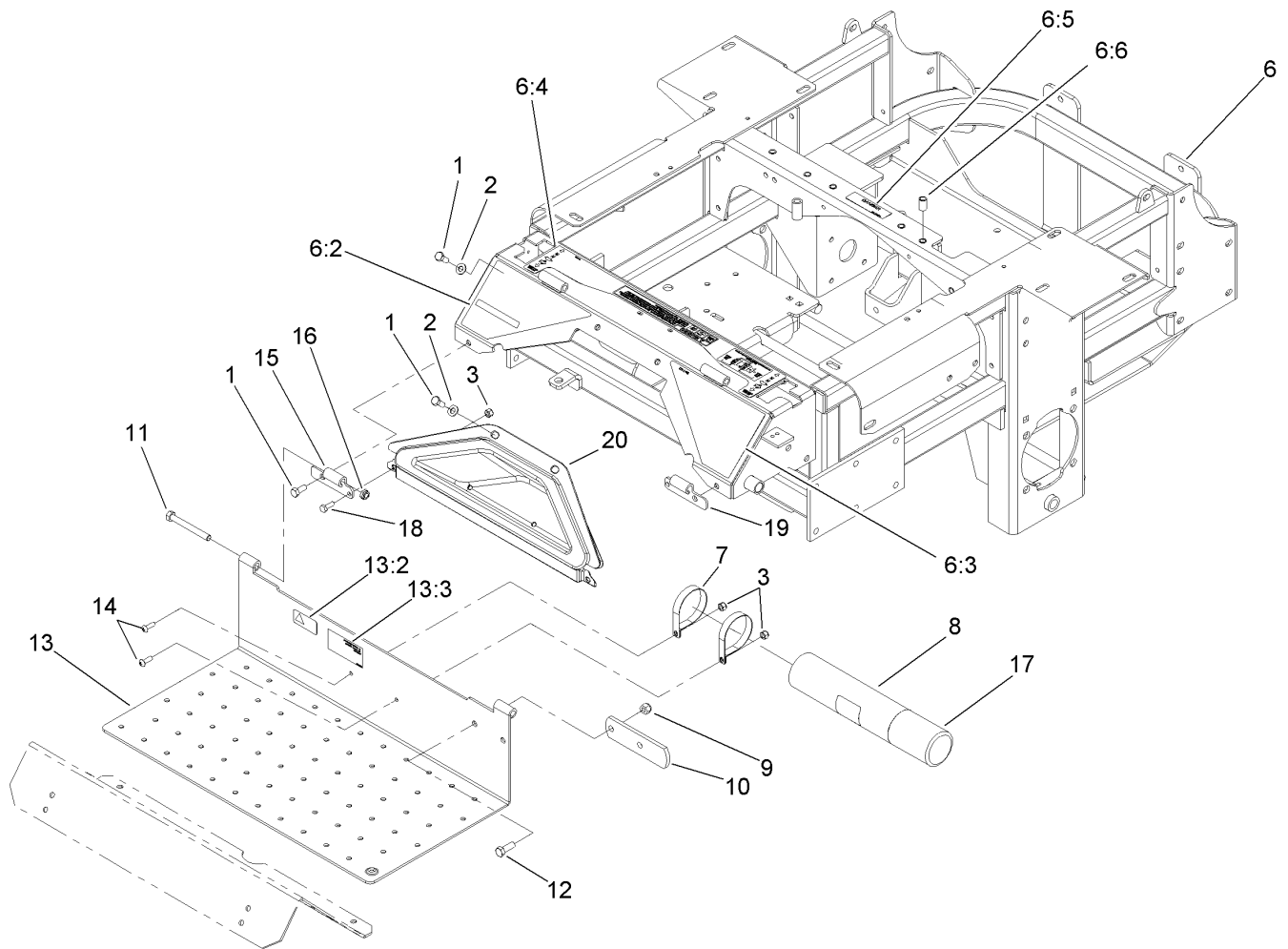
Ref.	Part Number	Qty.	Description	Ref.	Part Number	Qty.	Description
1	114-1248	1	Frame ASM	16	323-29	2	Screw-HH
1:2	107-1857	1	Decal-Brake, Parking	18	103-1918	1	Bushing
1:3	1-811010	2	Plug	21	323-11	1	Screw-HH
1:4	302-19	5	Fitting-Grease	22	117-0366	1	Plate-HOC, Outer
1:7	103-1918	1	Bushing	22:2	107-1860	1	Decal-Height, Deck
2	3256-29	4	Washer-Flat	22:4	117-2718	1	Decal-Arrester, Spark
3	32151-103	5	Ring-Retaining, EXT	23	1-633068	2	Arm-Lift, Deck
4	32151-29	2	Ring-Retaining	24	1-633082	1	Bushing-Lever, Lift
5	1-523157	2	Washer-Spacer	25	117-0369	1	Plate-HOC, Inner
6	3296-39	5	Nut-Lock, NI	25:2	107-1861	1	Decal-Height, Deck
7	108-7786-01	1	RH Front Deck Lift ASM	26	3290-357	17	Nut-HHF, Whiz
8	323-9	1	Screw-HH	27	109-8757	1	Pin-HOC
9	323-10	1	Screw-HH	28	98-5975	12	Washer-Belleville
10	323-5	1	Screw-HH	29	323-7	12	Screw-HH
12	106-9981	1	Footrest	30		2	Front Frame Spring ASM ●
12:2	106-7451	1	Decal	30:1	1-633096	1	Rod-Lift, Deck
12:3	107-2112	1	Decal-Warning	30:2	1-633441	2	Swivel-Deck Mount, Rear
13	3274-94	4	Screw-HSBH	30:3	3217-11	3	Nut-Hex
14	1-513658	2	Bumper	30:4	3218-6	3	Nut-Jam
15	110-5860	1	Deck Lift Handle ASM	30:5	3256-7	2	Washer-Flat
15:1	1-633295	1	Grip-Lever, Lift	30:6	1-643015	1	Spring-Support, Deck
15:2	103-2083	1	Lever-Lift	31	3218-2	2	Nut-Jam
15:3	103-2064	1	Arm-Lift, Deck	32	3274-18	2	Screw-HSH
15:4	1-633325	1	Spring-Compression	33	106-8984-01	1	LH Deck Lift ASM
15:5	3296-39	1	Nut-Lock, NI	34	1-633080	1	Bushing-Lever, Lift
15:6	3256-24	1	Washer-Flat				

● Not serviced separately



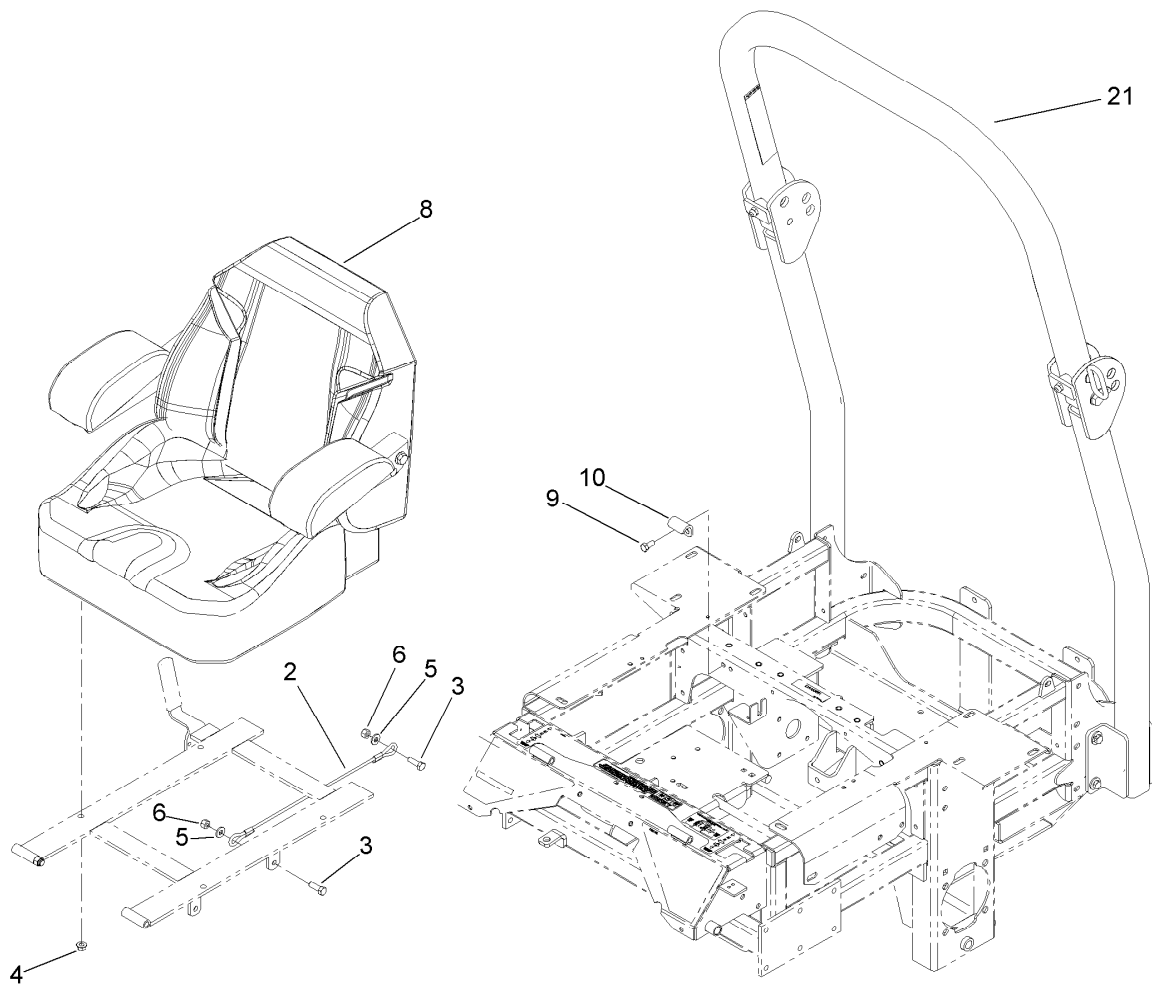
## Fork and Caster Wheel Assembly

<i>Ref.</i>	<i>Part Number</i>	<i>Qty.</i>	<i>Description</i>
1	109-9125	2	Wheel And Tire ASM
1:1	1-633585	2	Bearing-Cone, Taper
1:2	103-0063	2	Seal-Caster
1:3	103-3051	2	Spacer-Nut
1:4	103-5156	1	Axle-Caster
1:5	109-9124	1	Wheel And Tire ASM
1:5:1	1-633584	1	Bearing-Cup
2	3296-45	2	Nut-Lock, NI
12	254-72	4	Bearing-Cup, Tapered
13	254-94	4	Bearing-Cone, Tapered
14	1-633508	6	Washer-Bellville
15	3296-51	2	Nut-Lock, NI
16	103-4882	2	Cap-Grease
24	1-543511	2	Seal-Grease
25	103-1474-01	2	Caster-Fork
26	325-39	2	Screw-HH
28	103-2768	4	Guard-Seal



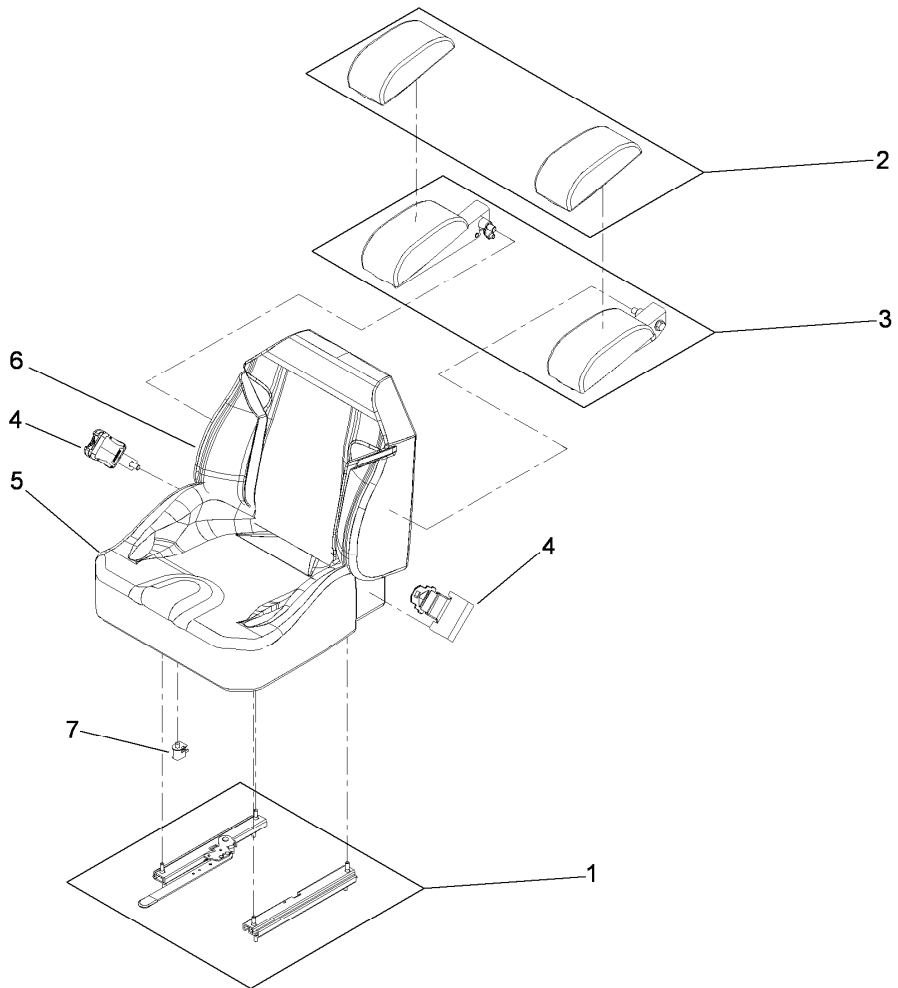
## Traction Frame and Floor Pan Assembly

<i>Ref.</i>	<i>Part Number</i>	<i>Qty.</i>	<i>Description</i>	<i>Ref.</i>	<i>Part Number</i>	<i>Qty.</i>	<i>Description</i>
1	322-43	6	Screw-HH	11	323-20	2	Screw-HH
2	3256-70	4	Washer-Flat	12	323-6	2	Screw-HH
3	3296-42	4	Nut-Lock, NI	13	107-1858	1	Floorpan
6	110-6212	1	Main Frame ASM	13:2	98-4387	1	Decal-Protection, Ear
6:2	106-9989	1	Decal-Warning	13:3	107-1864	1	Decal-Location, Manual
6:3	106-7492	1	Decal-Danger	14	3258-166	2	Screw-PRH
6:4	110-0819	1	Decal-Console, Top	15	106-7488-03	1	Hinge-Floorpan, LH
6:5	98-5954	1	Decal-Cover, Missing	16	3296-59	2	Nut-Lock, NI
6:6	32148-11	7	Insert-Threaded	17	104-7048	1	Cap-Housing
7	107-1865	2	R-Clamp	18	321-4	2	Screw-HH
8	104-7050	1	Tube-Manual	19	106-7489-03	1	Hinge-Floorpan, RH
9	3296-39	2	Nut-Lock, NI	20	106-7498	1	Pocket
10	1-633964-03	1	Stop-Brake, Park				



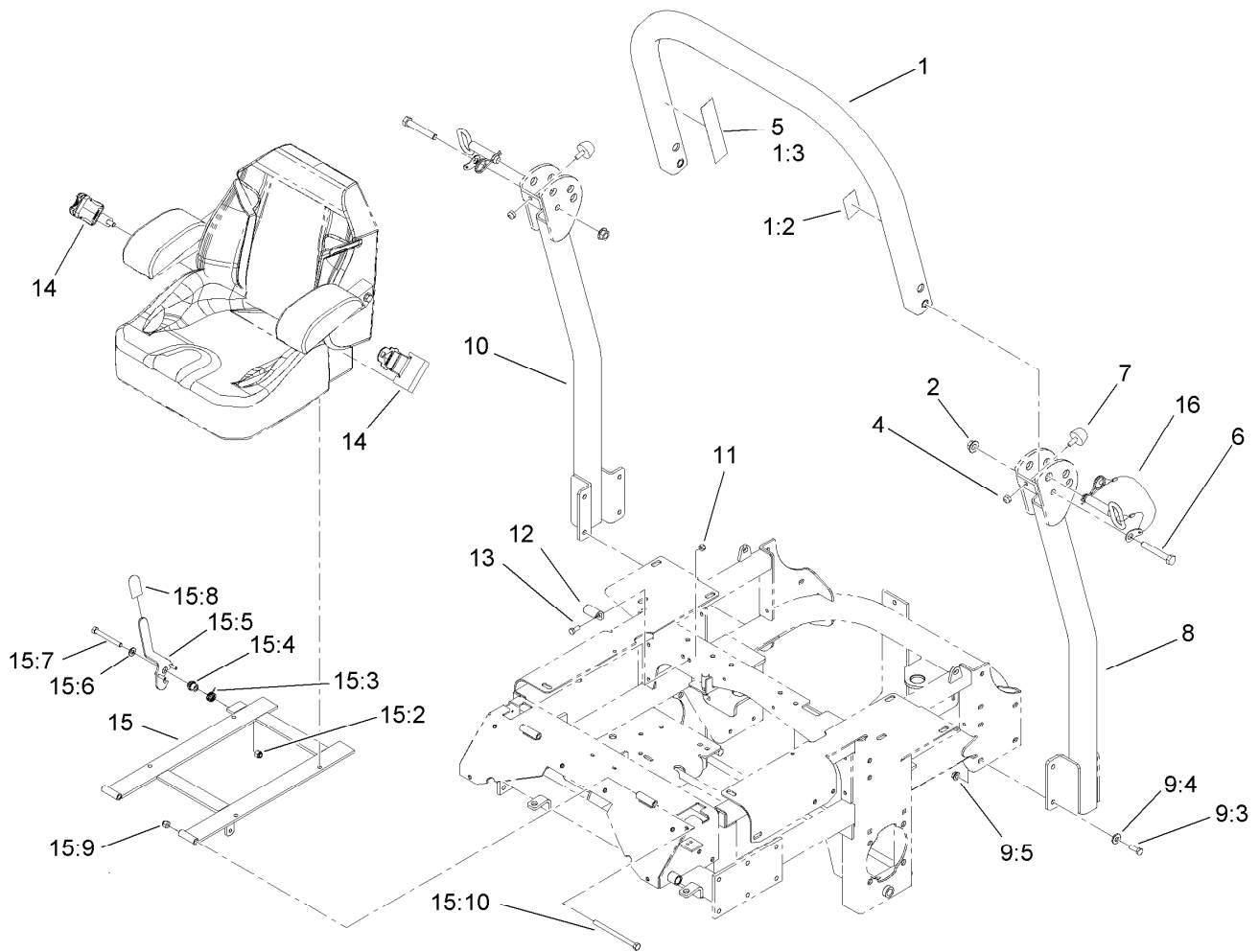
## Seat and Roll-Over Protection System Assembly

<i>Ref.</i>	<i>Part Number</i>	<i>Qty.</i>	<i>Description</i>
2	98-4371	1	Cable-Seat
3	322-5	2	Screw-HH
4	32128-20	4	Nut-HF
5	1-613235	2	Washer
6	3296-29	5	Nut-Lock, NI
8	116-0035	1	Seat-Standard
9	322-4	2	Screw-HH
10	107-3058	1	Catch-Latch, Seat
21	117-3866	1	ROPS Kit



## Seat Assembly No. 116-0035

<i>Ref.</i>	<i>Part Number</i>	<i>Qty.</i>	<i>Description</i>
1	109-9801	1	Seat Track Set
2	109-9802	1	Arm Rest Pad Set
3	109-9803	1	Arm Rest Set
4	109-9805	1	Seat Belt Kit
5	109-9806	1	Cover-Cushion
6	109-9808	1	Cover-Back
7	82-2190	1	Switch-Bail



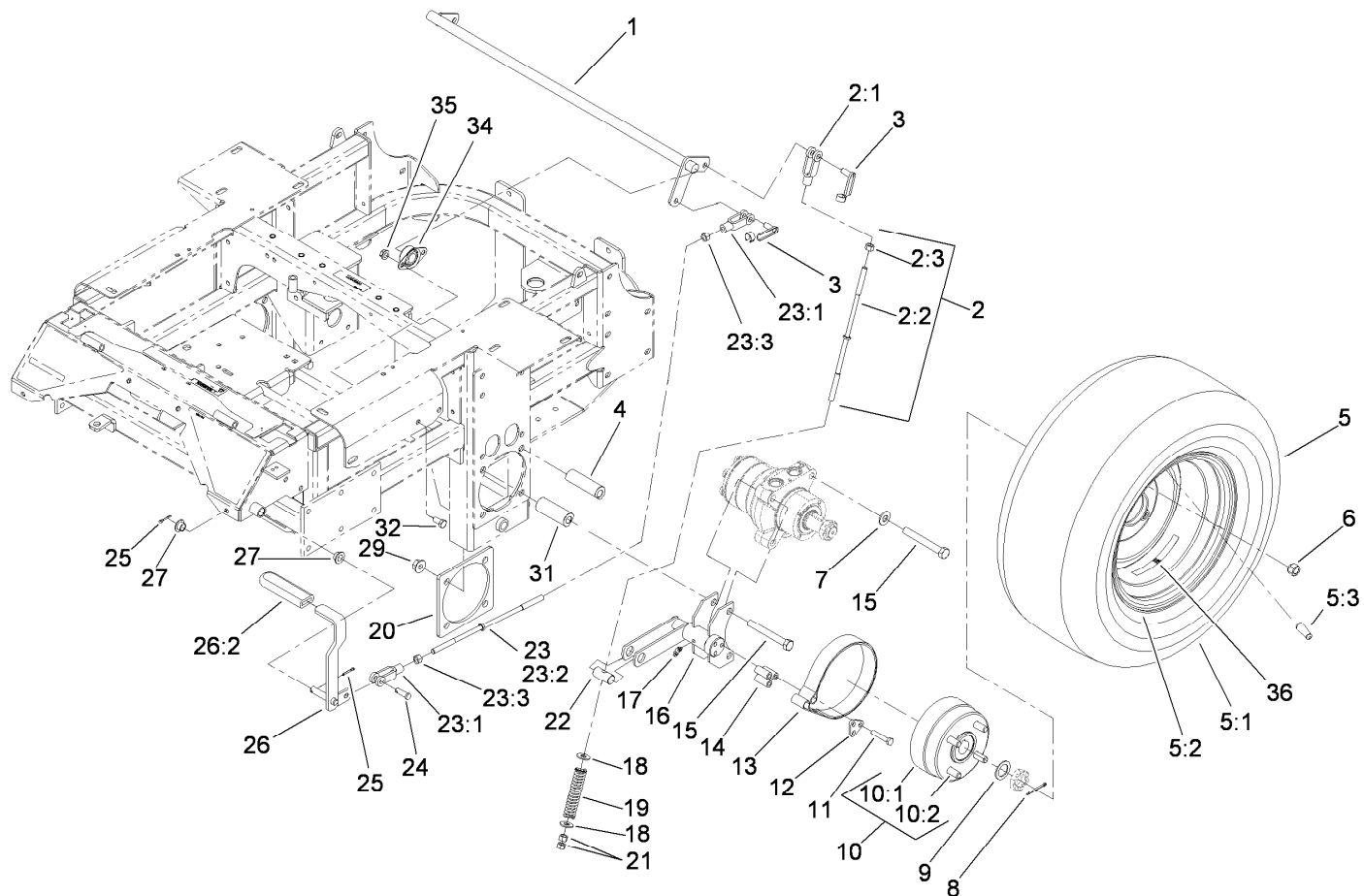
## Roll-Over Protection System Assembly No. 117-3866

Ref.	Part Number	Qty.	Description
1		1	Upper Tube ASM ■
1:2	107-2101	1	Decal-ROPS
1:3	107-2102	1	Decal-Warning, Folding ROPS
2	32128-23	2	Nut-HF
4	3296-73	2	Nut-Lock, NI
5	107-3069	1	Decal-Warning, Folding ROPS
6	325-13	2	Screw-HH
7	109-2365	2	Bumper-Rubber (W/Stud)
8		1	Tube-Support, LH ■
9		1	Bag-Bolt, ROPS ● ■
9:3	323-6	8	Screw-HH
9:4	98-5975	8	Washer-Belleville
9:5	3290-357	8	Nut-HHF, Whiz
10		1	Tube-Support, RH ■

Ref.	Part Number	Qty.	Description
11	3296-29	2	Nut-Lock, NI
12	107-3058	1	Catch-Latch, Seat
13	322-3	2	Screw-HH
14	109-9805	1	Seat Belt Kit
15	110-0874	1	Seatframe ASM
15:2	3296-39	1	Nut-Lock, NI
15:3	107-0076	1	Spring-Torsion
15:4	107-0075	1	Bushing-Latch, Seat
15:5	107-3083	1	Latch ASM
15:6	3256-24	1	Washer-Flat
15:7	323-20	1	Screw-HH
15:8	103-4434	1	Grip-Lever
15:9	3296-39	2	Nut-Lock, NI
15:10	323-39	2	Screw-HH
16	103-4553	2	ROPS Fold Pin ASM

● Not illustrated

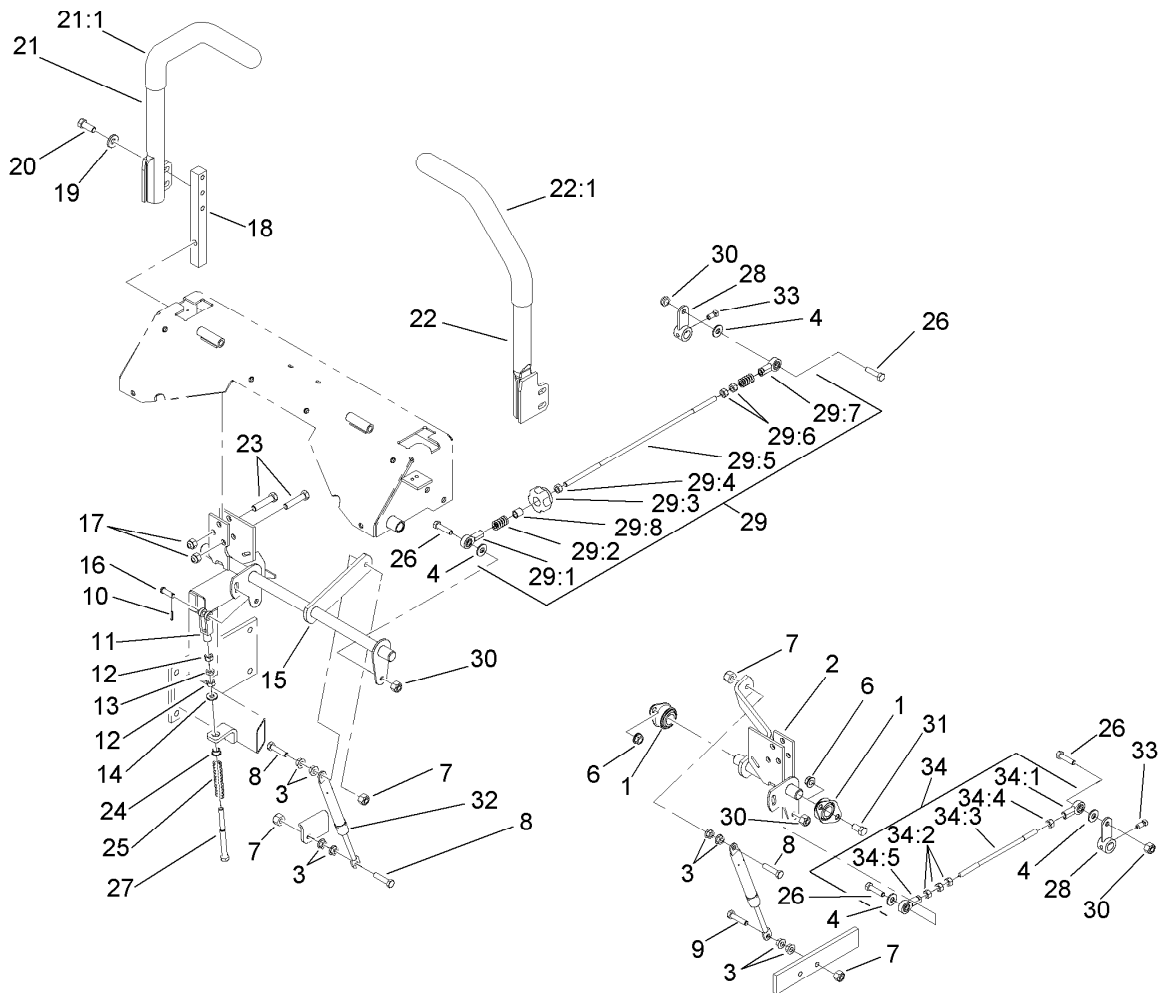
■ Not serviced separately



## Main Frame and Rear Wheel Assembly

Ref.	Part Number	Qty.	Description
1	1-632217-03	1	Shaft-Brake
2	108-5963	2	Brake Rod ASM
2:1	1-633131	1	Yoke-Linkage, Brake
2:2	108-5980	1	Rod-Brake
2:3	3219-3	1	Nut-Hex
3	103-2399	3	Pin-Spring, Clevis
4	109-5012	4	Spacer-Wheel, Long
5	109-8972	2	Wheel And Tire ASM
5:1	1-633993	1	Tire
5:2	109-3156	1	Rim ASM
5:3	232-27	1	Stem-Valve
6	242-50	8	Nut-Lug
7	87-7270	4	Washer-Thrust
8	1-806800	2	Pin-Cotter
9	1-523157	2	Washer-Spacer
10	103-0590	2	Hub And Wheel ASM
10:1	103-0589	1	Wheel Hub ASM
10:2	1-633926	4	Stud-Wheel
11	322-9	6	Screw-HH
12	103-0374	2	Retainer-Band, Brake
13	103-0355	2	Band-Brake
14	103-0384	6	Spacer
15	325-33	8	Screw-HH

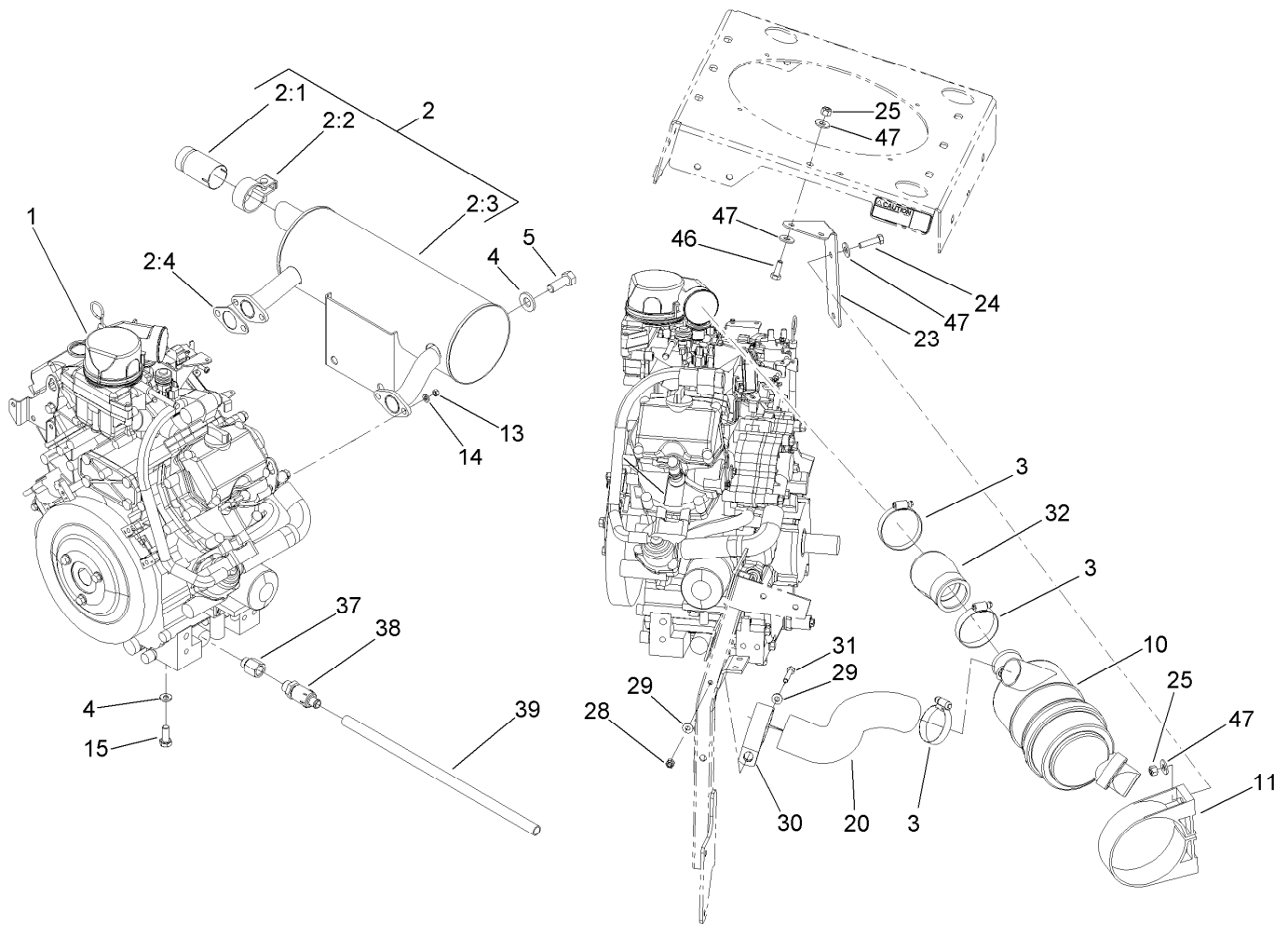
Ref.	Part Number	Qty.	Description
16	103-0354-03	2	Brake Bracket ASM
17	1481	2	Fitting-Grease
18	3256-4	4	Washer-Flat
19	1-633454	2	Spring-Brake
20	103-3271-03	2	Plate-Reinforcement
21	3219-3	4	Nut-Hex
22	1-633144	2	Pin-Trunion
23	108-5962	1	Brake Rod ASM
23:1	1-633131	2	Yoke-Linkage, Brake
23:2	1-633477	1	Rod-Brake
23:3	3219-3	2	Nut-Hex
24	1-808285	1	Pin-Clevis
25	3272-10	2	Pin-Cotter
26	1-634500	1	Brake Lever ASM
26:2	1-633268	1	Grip-Lever
27	1-513140	2	Bearing-Control
29	32128-49	8	Nut-HHF
31	109-5011	4	Spacer-Wheel, Short
32	323-4	4	Screw-HH
34	1-633102	2	Bearing-Flange, Side
35	3290-357	4	Nut-HHF, Whiz
36	109-7949	2	Decal



## Hydro Control Assembly

Ref.	Part Number	Qty.	Description
1	1-633102	4	Bearing-Flange, Side
2	107-3480	1	LH Motion Control ASM
3	32128-20	10	Nut-HF
4	3256-3	4	Washer-Flat
6	3290-357	6	Nut-HHF, Whiz
7	3296-29	4	Nut-Lock, NI
8	1-403180	3	Screw-HH
9	322-41	1	Screw-HH
10	3272-5	2	Pin-Cotter
11	1-303105	2	Yoke-Adjustable
12	3219-2	4	Nut-Hex
13	3220-2	2	Nut-Jam
14	3256-2	2	Washer-Flat
15	107-3481	1	RH Motion Control ASM
16	1-808280	2	Pin-Clevis
17	3296-39	6	Nut-Lock, NI
18	103-0407	2	Arm-Shaft, Control
19	98-5975	4	Washer-Belleville
20	323-6	4	Screw-HH
21	108-7237	1	RH Lever ASM
21:1	106-9987	1	Grip-Control, Motion
22	108-7238	1	LH Lever ASM
22:1	106-9987	1	Grip-Control, Motion
23	323-9	6	Screw-HH

Ref.	Part Number	Qty.	Description
24	1-603735	2	Bushing-Flanged
25	1-603807	2	Spring-Return, Neutral
26	322-5	4	Screw-HH
27	1-603737	2	Bolt-Return, Neutral
28	107-3470-03	2	Hydraulic Control Arm ASM
29	107-3474	1	RH Control Rod ASM
29:1	1-543017	1	Balljoint-RH
29:2	1-323245	2	Spring-Compression
29:3	103-3060	1	Knob-Tracking
29:4	3219-2	1	Nut-Hex
29:5	107-3472	1	Rod-Control, RH
29:6	1-804524	2	Nut
29:7	1-633152	1	Balljoint-LH
29:8	103-1166	1	Spacer-Tube, Pump Link
30	3296-47	4	Nut-Lock, NI
31	323-4	6	Screw-HH
32	109-2339	2	Damper-Control, Motion
33	1-803022	2	Screw-Set
34	107-3475	1	LH Control Rod ASM
34:1	1-543017	1	Balljoint-RH
34:2	3219-2	3	Nut-Hex
34:3	107-3473	1	Rod-Control, LH
34:4	1-804524	1	Nut
34:5	1-633152	1	Balljoint-LH



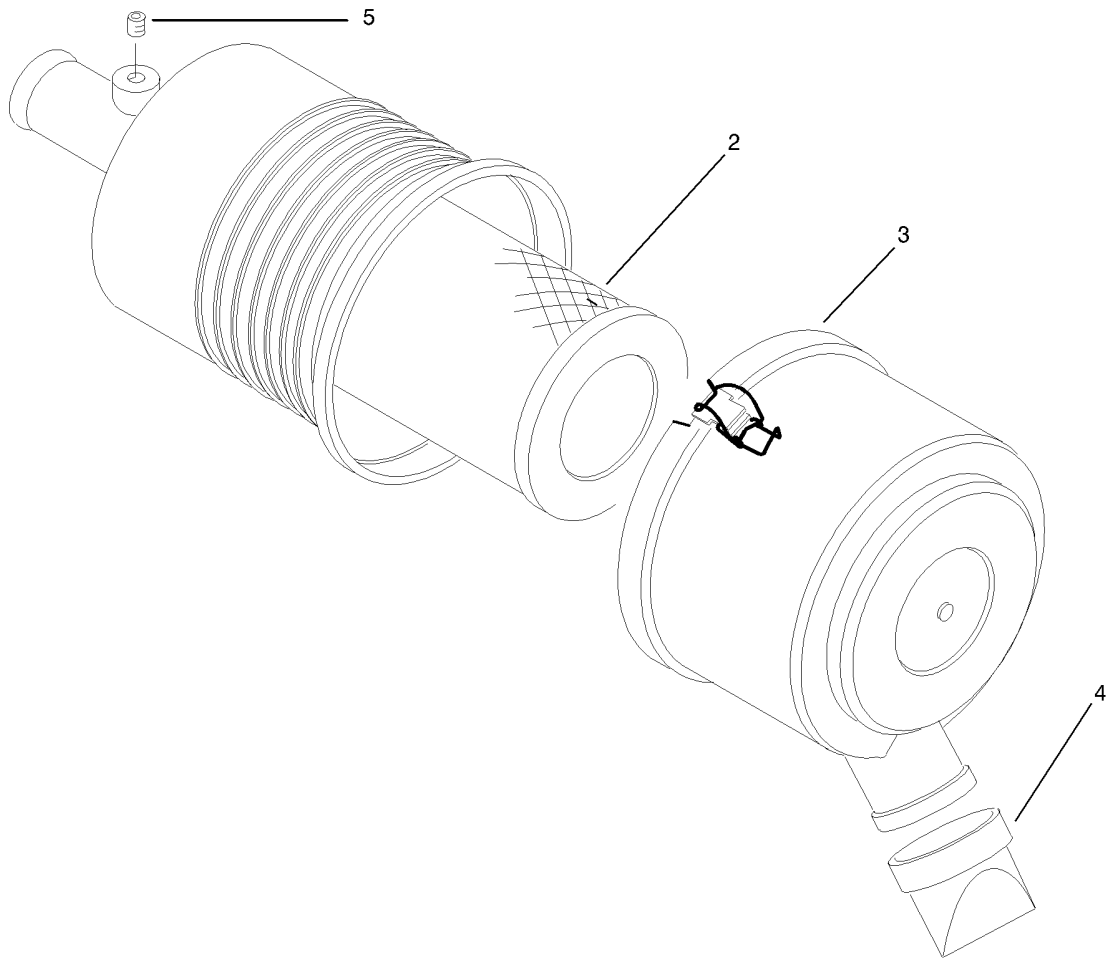
## Engine, Muffler and Air Cleaner Assembly

Ref.	Part Number	Qty.	Description
1		1	Engine-Kawasaki, Fd791D-As ●■
2	105-1678	1	Muffler Kit (W/ Arrester)
2:1	103-1511	1	Arrestor-Spark
2:2	103-1512	1	Clamp-Muffler
2:3	103-2759	1	Muffler
2:4	103-1564	2	Gasket-Exhaust
3	2412-42	3	Clamp-Hose
4	98-5975	6	Washer-Belleville
5	33115-020	2	Screw-HH
10	95-5805	1	Air Cleaner ASM
11	95-5806	1	Bracket-Mounting
13	33014-00	4	Nut-Hex
14	3253-4	4	Washer-Lock
15	33115-025	4	Screw-HH

Ref.	Part Number	Qty.	Description
20	110-6227	1	Hose-Air Cleaner, Inlet
23	110-6226-03	1	Bracket-Mount, Ac
24	322-6	2	Screw-HH
25	3296-29	4	Nut-Lock, NI
28	3296-42	1	Nut-Lock, NI
29	3256-22	2	Washer-Flat
30	110-6245	1	Clamp-R
31	321-10	1	Screw-HH
32	110-6222	1	Hose-Air Cleaner, Outlet
37	109-0878	1	Adapter
38	92-6877	1	Valve-Drain, Oil
39	106-7022	1	Tube-Drain, Oil
46	322-4	2	Screw-HH
47	3256-3	8	Washer-Flat

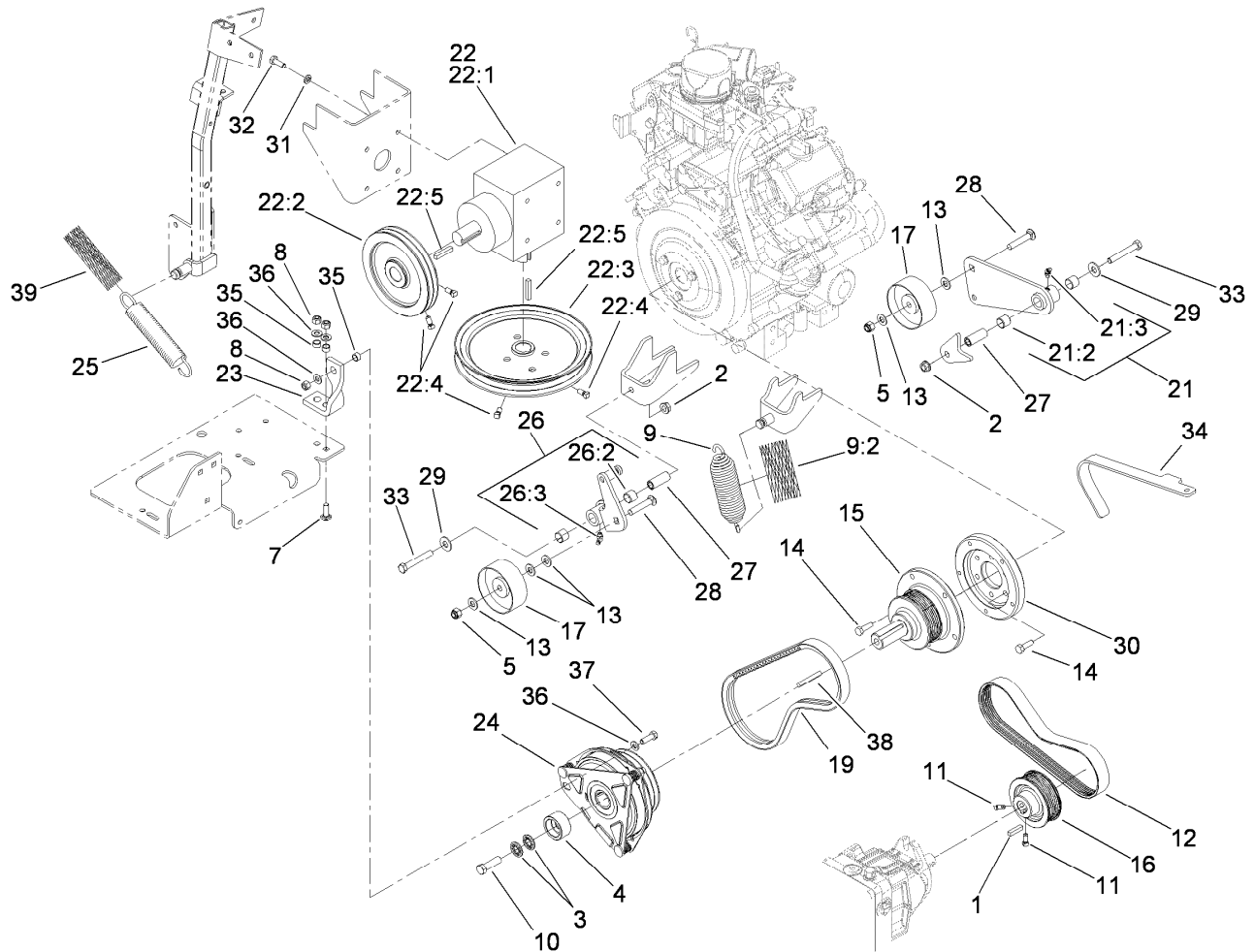
● Not serviced separately

■ Obtain parts from [www.kawpowerepc.com](http://www.kawpowerepc.com)



## Air Cleaner Assembly No. 95-5805

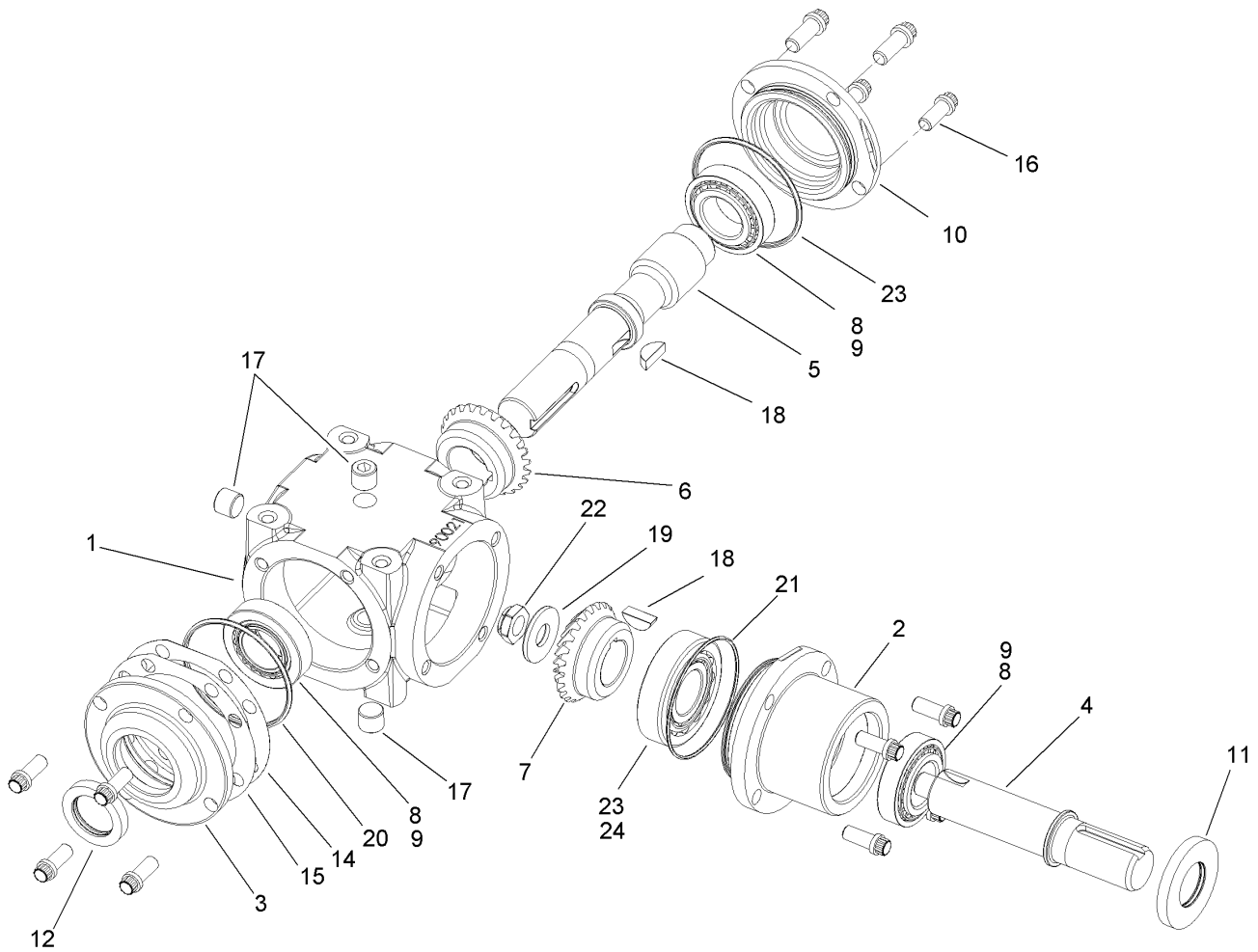
<i>Ref.</i>	<i>Part Number</i>	<i>Qty.</i>	<i>Description</i>
2	108-3811	1	Filter-Air
3	94-3652	1	Cover ASM
4	87-9400	1	Valve-Vacuator
5	285-17	1	Plug-Pipe



## Hydro and Gearbox Assembly

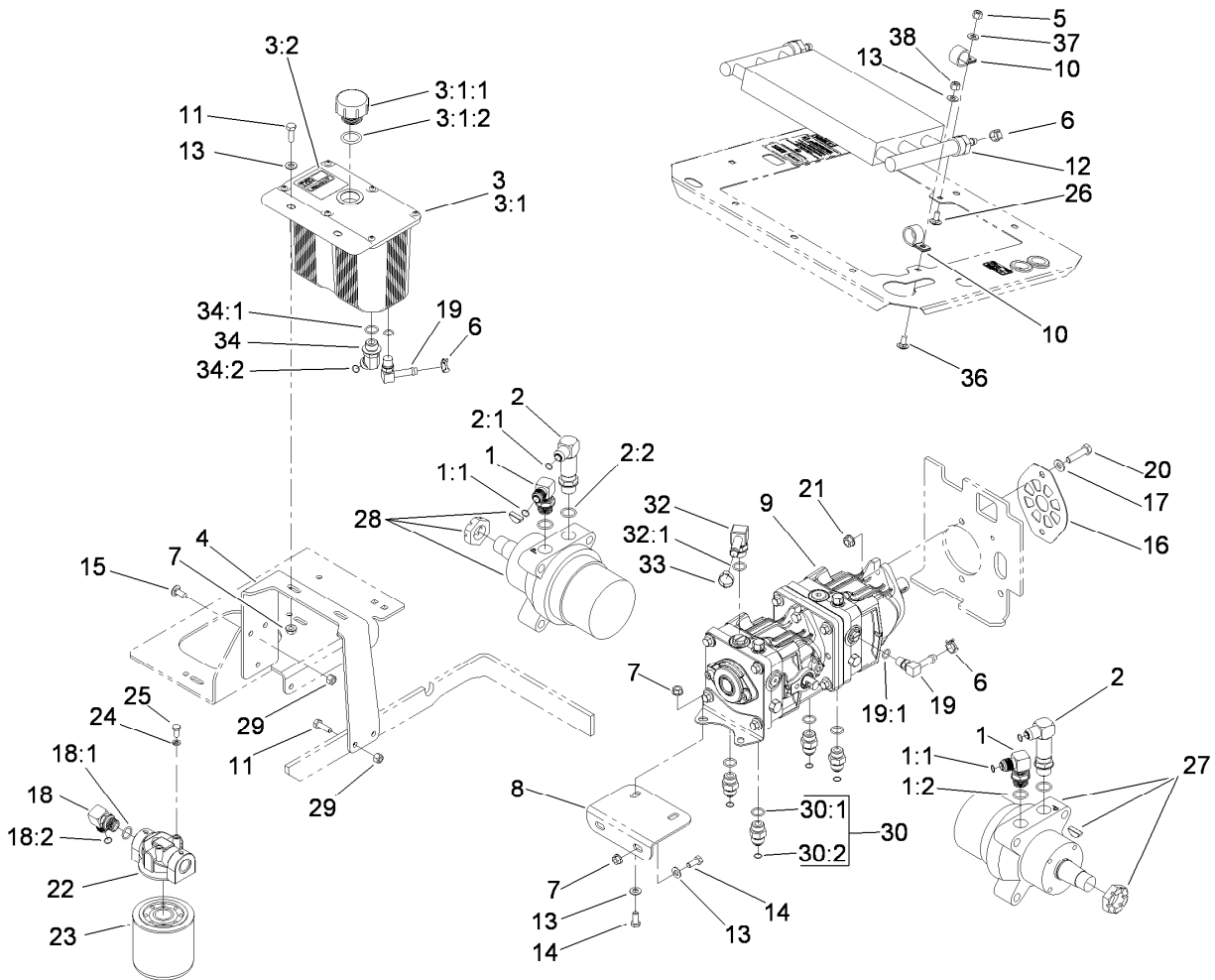
Ref.	Part Number	Qty.	Description	Ref.	Part Number	Qty.	Description
1	5-0698	1	Key	22:2	110-3862	1	Pulley
2	3290-357	2	Nut-HHF, Whiz	22:3	110-0892	1	Pulley
3	1-603610	2	Washer-Spring	22:4	1-803022	4	Screw-Set
4	114-8152	1	Retainer-Clutch	22:5	67-7490	2	Key-Square
5	3296-39	2	Nut-Lock, NI	23	112-1781	1	Strap-Stop, Clutch
7	3230-22	2	Screw-CARR	24	114-4405	1	Clutch-Electric
8	3296-29	3	Nut-Lock, NI	25	1-513308	1	Spring-Idler, Deck
9	114-4430	1	Dfi Hydro Spring Kit	26	110-6215	1	Idler Arm ASM
9:2	114-4423	1	Cover-Spring	26:2	103-4681	2	Sleeve-Bearing
10	3212-6	1	Screw-HH	26:3	1481	1	Fitting-Grease
11	1-803022	2	Screw-Set	27	1-603044	2	Bushing
12	107-9910	1	Belt-V	28	3231-6	2	Screw-CARR
13	3256-24	5	Washer-Flat	29	3256-4	2	Washer-Flat
14	33114-025	11	Screw-HH	30	110-6249	1	Adapter-Shaft, Stub
15	112-2335	1	Stub Shaft	31	3253-4	4	Washer-Lock
16	110-3864	1	Pulley	32	322-4	4	Screw-HH
17	108-5910	2	Pulley-Flat	33	323-12	2	Screw-HH
19	110-5759	1	Belt-V	34	110-0876	1	Tool-Alignment, Pulley
21	110-6216	1	Idler Arm ASM	35	65-9820	3	Spacer
21:2	103-4681	2	Sleeve-Bearing	36	3256-23	4	Washer-Flat
21:3	1481	1	Fitting-Grease	37	322-5	1	Screw-HH
22		1	Gearbox ●	38	5-1336	1	Key-Square
22:1	110-5771	1	Gearbox-90 DEG	39	114-4423	2	Cover-Spring

● Not serviced separately



## 90 Degree Gearbox Assembly No. 110-5771

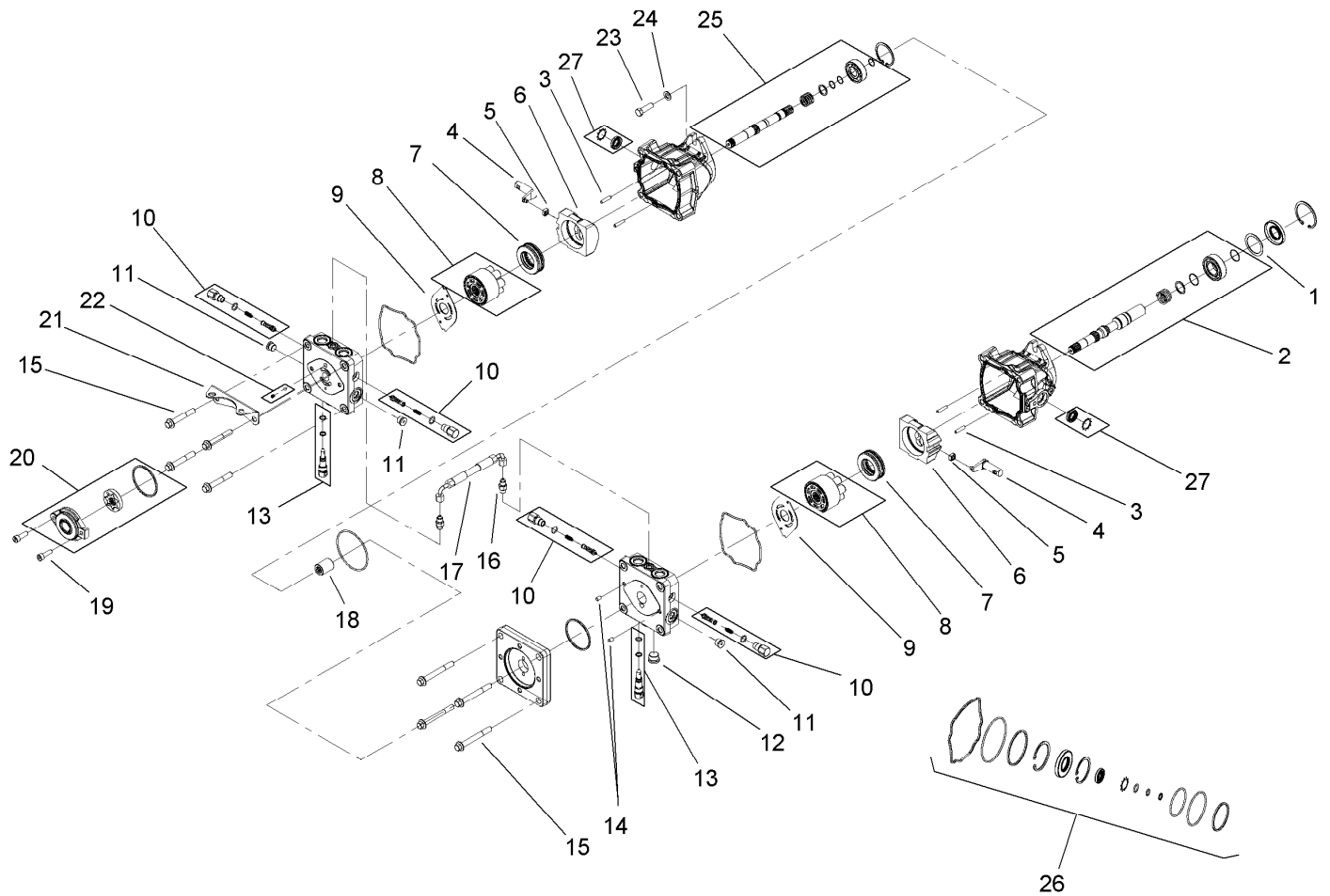
<i>Ref.</i>	<i>Part Number</i>	<i>Qty.</i>	<i>Description</i>
1	114-4413	1	Case
2	110-0853	1	Housing-Pinion
3	114-4414	1	Cap, End, Open
4	110-0844	1	Shaft-Pinion
5	114-4415	1	Shaft, Cross
6	110-0847	1	Gear-Shaft, Cross
7	110-0846	1	Gear-Pinion
8	110-0848	3	Bearing-Cup
9	110-0849	3	Bearing-Cone
10	100-4574	1	Cap-End, Closed
11	100-4575	1	Seal
12	110-0850	1	Seal-Shaft, Cross
14	100-4592	1	Shim-Blue, .005In
15	100-4593	1	Shim-Green, .003In
16	100-4578	12	Screw
17	100-4579	3	Plug
18	3257-33	2	Key-Woodruff
19	100-4581	1	Washer
20	100-4582	2	O-Ring
21	110-0851	1	O-Ring
22	110-0852	1	Nut Lock
23	100-5817	1	Bearing-Cup
24	100-5816	1	Bearing-Cone



## Hydraulic Tank, Motor and Pump Assembly

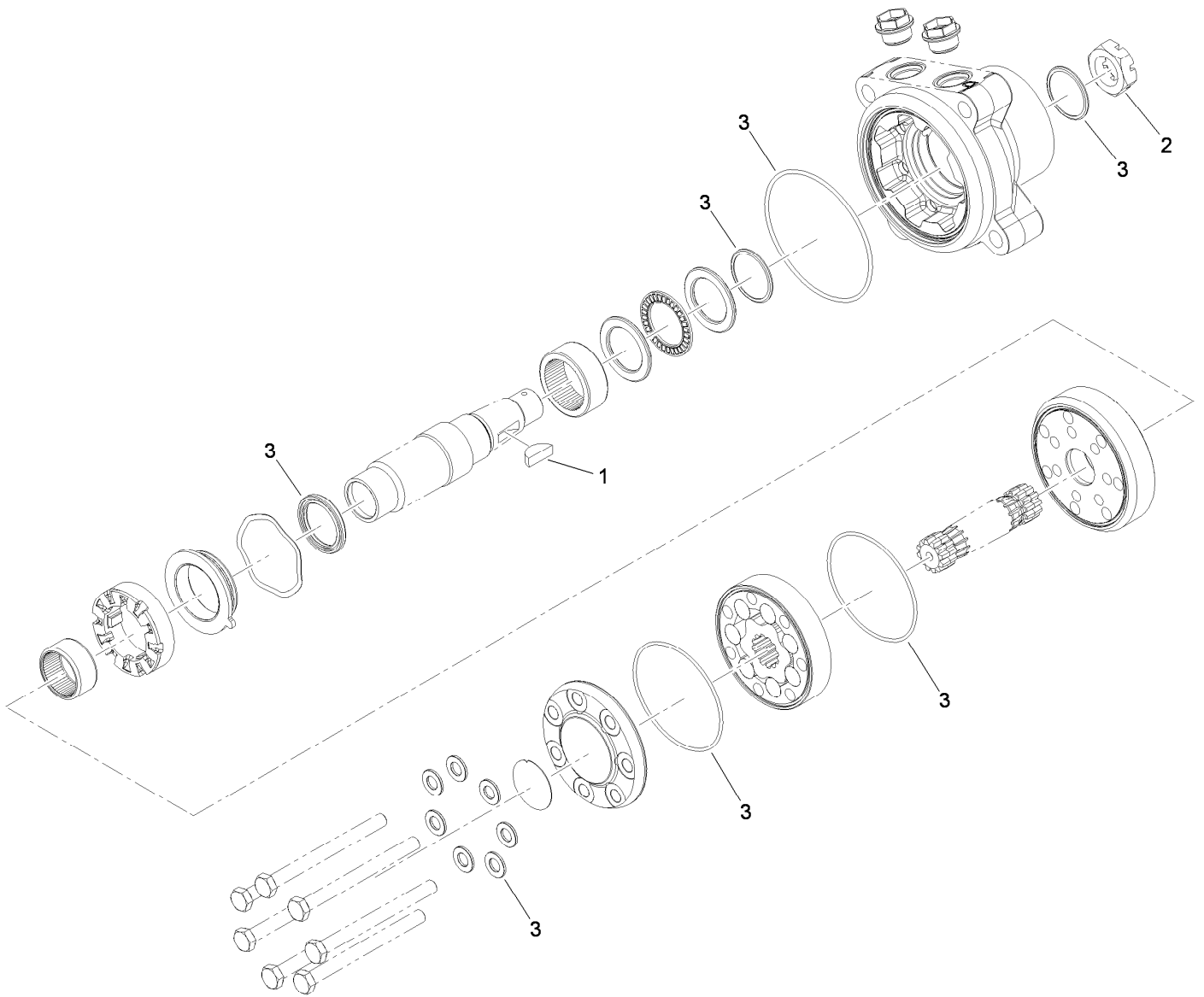
Ref.	Part Number	Qty.	Description	Ref.	Part Number	Qty.	Description
1	1-633605	2	Fitting-HYD, 90 DEG	18:1	1-603920	1	O-Ring
1:1	1-603992	1	O-Ring	18:2	1-603992	1	O-Ring
1:2	237-80	1	O-Ring	19	109-6449	2	Fitting-Elbow, 90
2	108-5323	2	Fitting-Elbow-90	19:1	237-42	1	O-Ring
2:1	1-603992	1	O-Ring	20	323-8	2	Screw-HH
2:2	237-80	1	O-Ring	21	3290-357	2	Nut-HHF, Whiz
3	108-5315	1	Hydraulic Tank ASM	22	86-9080	1	Head-Filter
3:1		1	Tank-Hydraulic ●	23	67-8110	1	Cartridge-Filter, Oil
3:1:1	103-1948	1	Cap-Reservoir, HYD	24	1-805004	2	Washer-Lock
3:1:2	103-1949	1	Gasket-Cap	25	321-3	2	Screw-HH
3:2	1-523552	1	Decal-Tank, HYD	26	3229-11	1	Screw-CARR
4	108-5352-03	1	Bracket-Tank, Hydraulic	27	112-8357	1	Motor-Wheel, CCW S2
5	3296-42	1	Nut-Lock, NI	28	112-8358	1	Motor-Wheel, CW S2
6	110-6242	4	Clamp-Hose	29	3296-29	4	Nut-Lock, NI
7	32128-20	6	Nut-HF	30	1-603990	4	Fitting-Straight
8	107-3462-03	1	Bracket-Pump, Front	30:1	1-603920	1	O-Ring
9	110-5757	1	Tandem Pump ASM	30:2	1-603992	1	O-Ring
10	110-0824	3	R-Clamp	32	108-5316	1	Fitting-Elbow, 90 DEG
11	322-5	3	Screw-HH	32:1	237-79	1	O-Ring
12	114-4403	1	Cooler-Oil, Hydro	33	103-2104	1	Clamp-Hose
13	3256-23	8	Washer-Flat	34	1-523221	1	Fitting-HYD, 45 DEG
14	322-4	4	Screw-HH	34:1	1-603920	1	O-Ring
15	3230-23	3	Screw-CARR	34:2	1-603992	1	O-Ring
16	108-5367-03	1	Plate-Shield, Pump	36	3230-18	3	Screw-CARR
17	3256-24	2	Washer-Flat	37	3256-22	1	Washer-Flat
18	103-2153	1	Fitting-90 DEG	38	3296-29	3	Nut-Lock, NI

● Not serviced separately



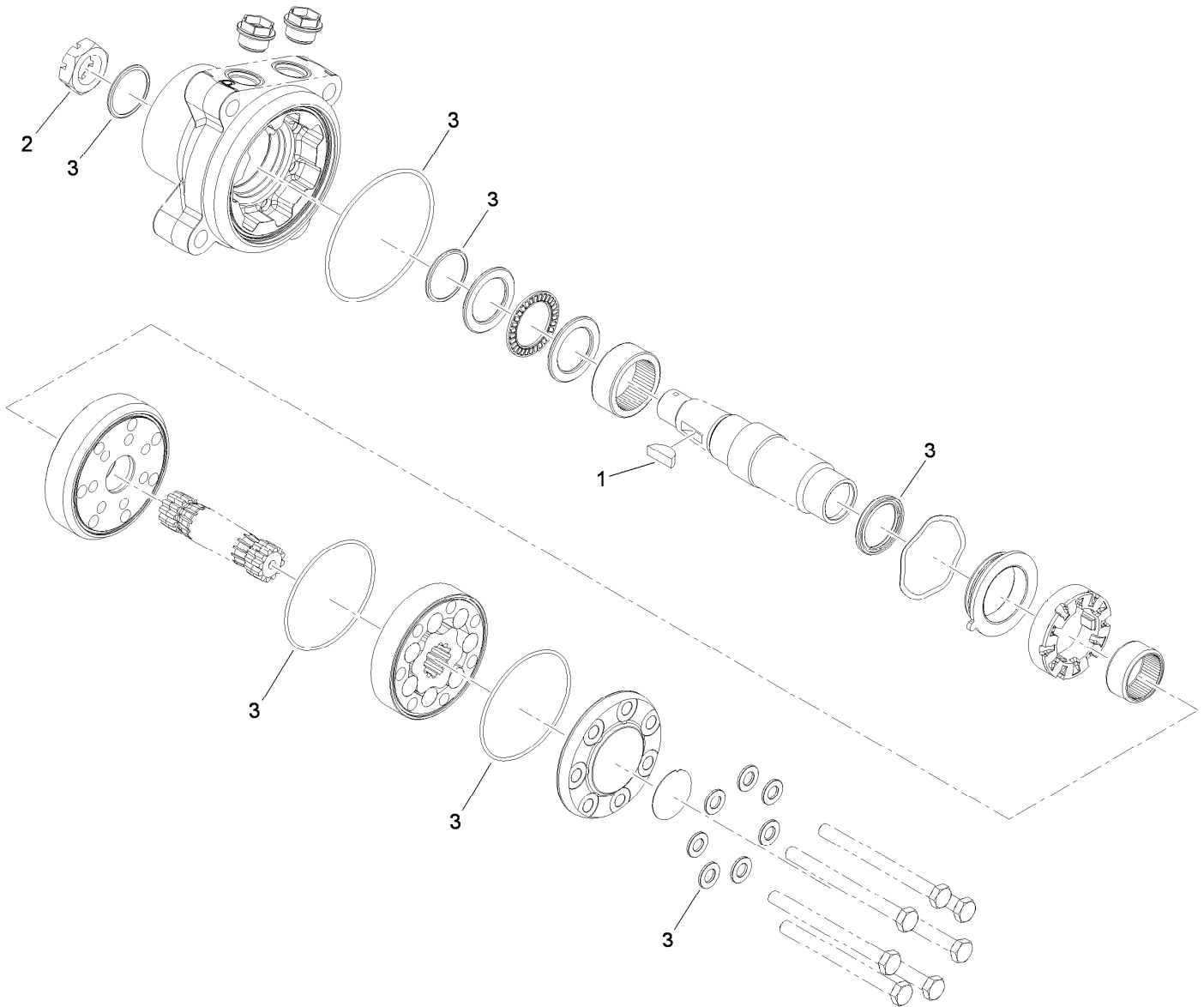
## Tandem Pump Assembly No. 110-5757

<i>Ref.</i>	<i>Part Number</i>	<i>Qty.</i>	<i>Description</i>	<i>Ref.</i>	<i>Part Number</i>	<i>Qty.</i>	<i>Description</i>
1	112-4168	1	Spacer	15	112-4157	8	Bolt
2	112-4151	1	Input Pump Shaft Kit	16	117-7842	2	Fitting-Straight
3	106-8753	4	Pin-Headless, Straight	17	117-7843	1	Hose ASM
4	112-4152	2	Arm-Trunnion	18	112-4160	1	Coupling
5	94-1910	2	Guide-Slot	19	112-4161	2	Bolt
6	112-4153	2	Swashplate	20	112-4162	1	Charge Pump Kit
7	112-4154	2	Bearing-Thrust	21	112-4163	1	Bracket-Support, Pump
8	108-2112	2	Cylinder Block Kit	22	112-4164	1	Charge Relief Kit
9	108-6801	2	Plate-Valve	23	112-4165	2	Bolt-HSH
10	112-4155	4	Shock Valve Kit	24	112-4166	2	Washer
11	104-2189	3	Plug-Thread, Straight	25	112-4167	1	Second Pump Shaft Kit
12	112-4156	1	Plug-Steel	26	112-4150	1	Overhaul Seal Kit
13	106-8759	2	Bypass Valve Kit	27	114-8155	1	Trunnion Seal Kit
14	104-2170	2	Pin				



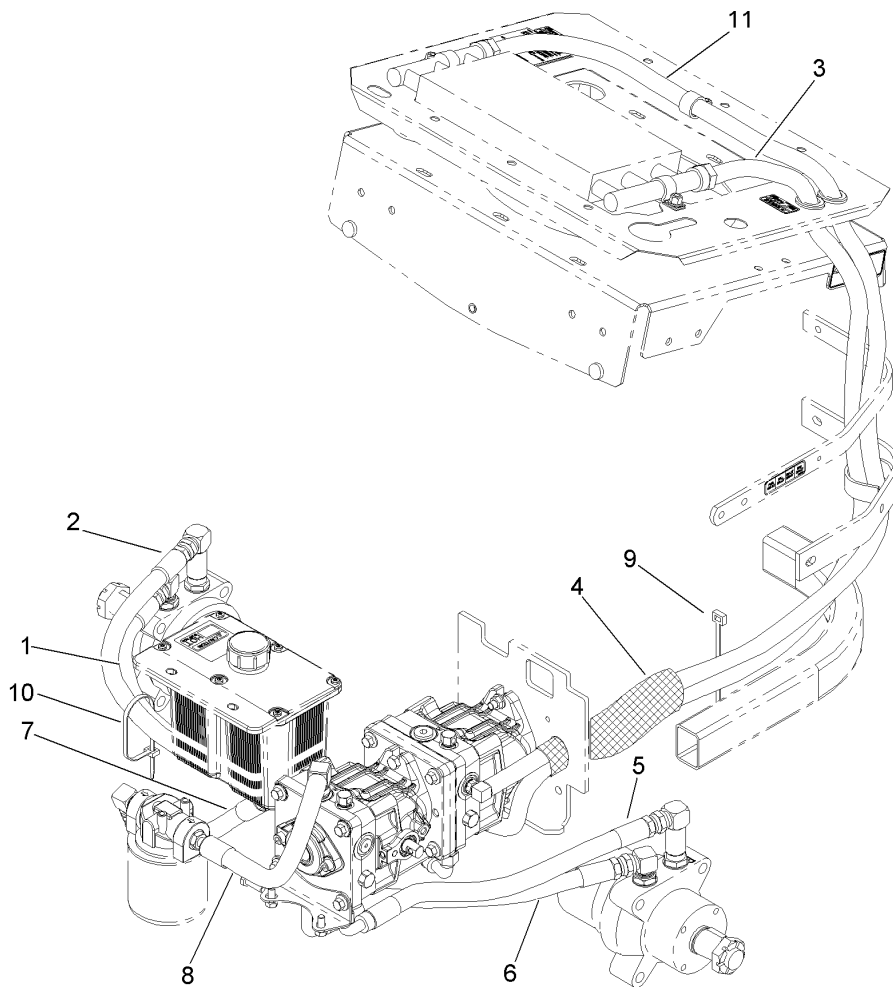
## Hydraulic Motor Assembly No. 112-8357 (CCW)

<i>Ref.</i>	<i>Part Number</i>	<i>Qty.</i>	<i>Description</i>
1	3257-42	1	Key-Woodruff
2	1-809036	1	Nut-HH
3	109-5966	1	Wheel Motor Seal Kit



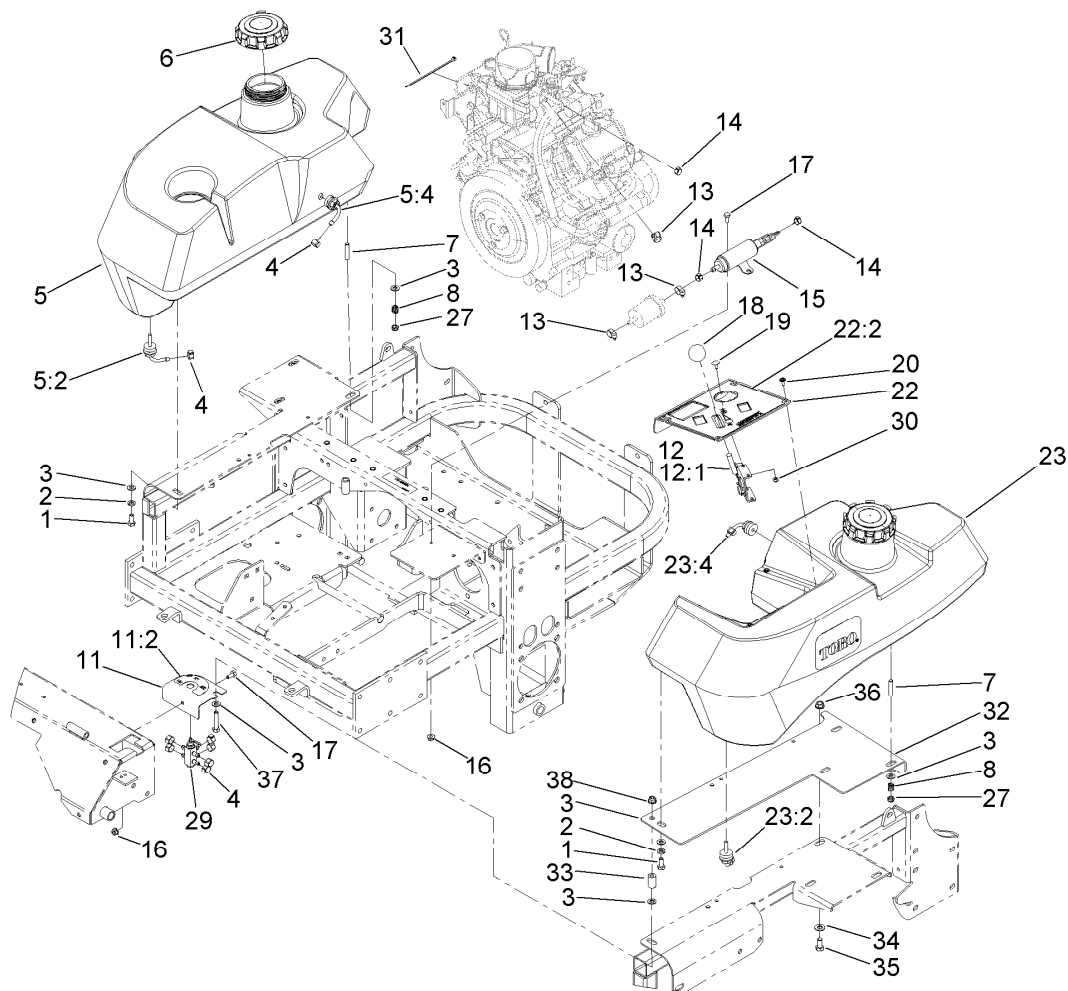
## Hydraulic Motor Assembly No. 112-8358 (CW)

<i>Ref.</i>	<i>Part Number</i>	<i>Qty.</i>	<i>Description</i>
1	3257-42	1	Key-Woodruff
2	1-809036	1	Nut-HH
3	109-5966	1	Wheel Motor Seal Kit



## Hydraulic Hose Routing Assembly

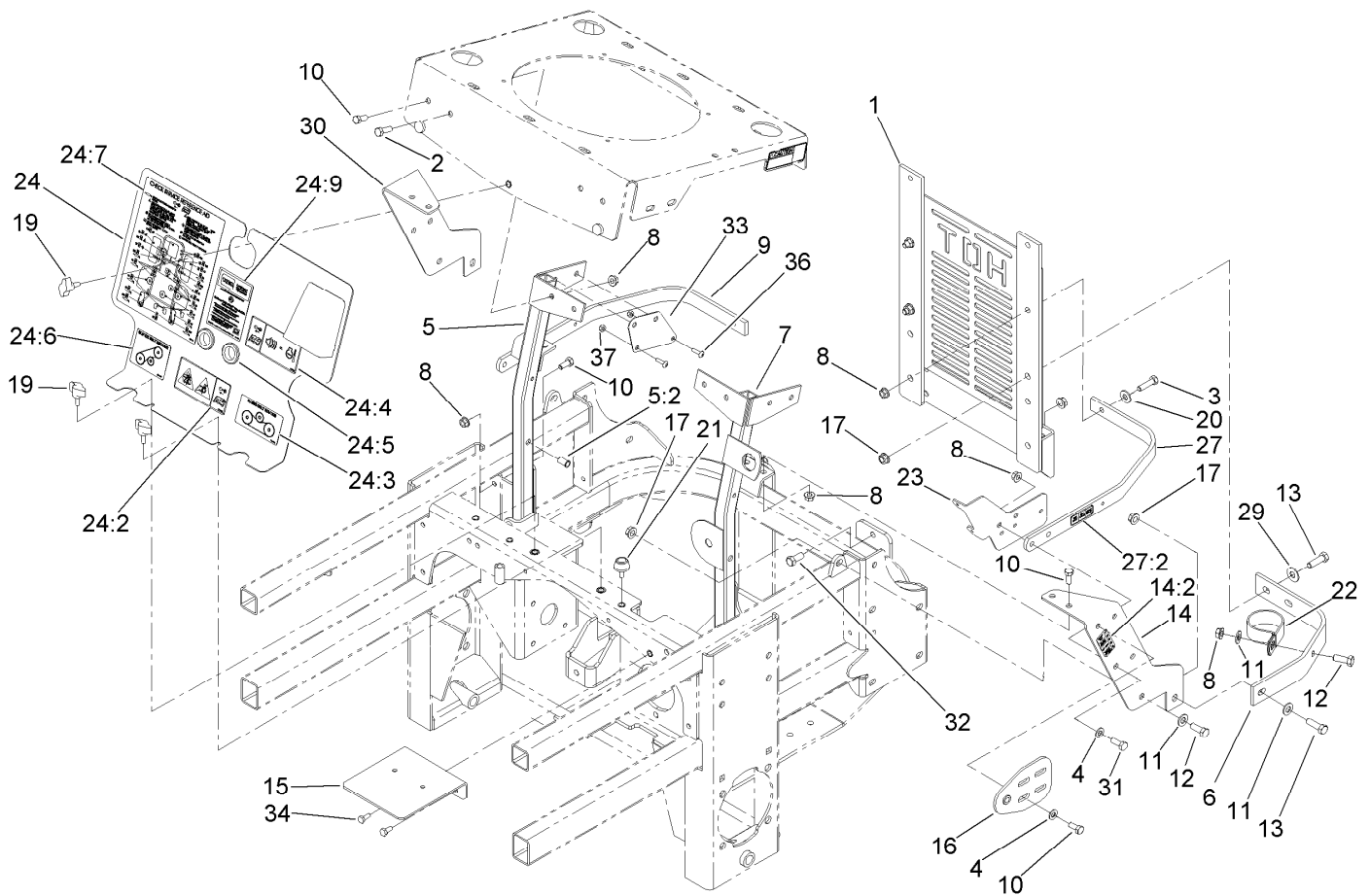
<i>Ref.</i>	<i>Part Number</i>	<i>Qty.</i>	<i>Description</i>
1	110-5789	1	Hydraulic Hose ASM
2	110-5790	1	Hydraulic Hose ASM
3	110-6238	1	Hose-Hydraulic
4	114-8201	1	Sleeve-Fabric
5	114-4410	1	Hydraulic Hose ASM
6	114-4411	1	Hydraulic Hose ASM
7	110-3854	1	Hydraulic Hose ASM
8	108-5374	1	Hydraulic Hose ASM
9	1-303335	1	Tie-Plastic
10	1-809066	1	Tie-Plastic
11	110-6239	1	Hose-Hydraulic



## Fuel System and Throttle Control Assembly

Ref.	Part Number	Qty.	Description	Ref.	Part Number	Qty.	Description
1	322-3	2	Screw-HH	18	1-603175	1	Knob-Ball
2	1-805005	2	Washer-Lock	19	1-807513	2	Bolt-CARR
3	3256-23	10	Washer-Flat	20	109-2661	4	Screw-PPH
4	1-643293	10	Clamp-Hose, Fuel	22	117-0920	1	Control Panel ASM
5	110-0440	1	Tank-Fuel, RH	22:2	117-0919	1	Deca -Panel, Control
5:2	103-2605	1	Fitting-Fuel, Bulkhead	23	110-0441	1	Tank-Fuel, LH
5:4	103-2615	1	Fitting-Fuel, Bulkhead	23:2	103-2605	1	Fitting-Fuel, Bulkhead
6	109-0346	2	Cap-Fuel, Gas	23:4	103-2615	1	Fitting-Fuel, Bulkhead
7	1-633023	6	Stud	27	3296-47	6	Nut-Lock, NI
8	1-633349	6	Spring-Tank, Fuel	29	1-643234	1	Valve-Fuel, Dual Flow
11	110-6247	1	Fuel Valve Bracket ASM	30	3296-2	2	Nut-Lock, NI
11:2	107-2114	1	Decal-Valve, Fuel	31	1-303287	1	Tie-Cable
12	110-6234	1	Throttle Control ASM	32	114-1545-03	1	Bracket-Fuel Tank, LH
12:1	112-2334	1	Lever-Throttle	33	94-7564	1	Spacer
13	2412-108	3	Clamp-Worm	34	3256-24	2	Washer-Flat
14	1-643277	3	Clamp-Hose, Fuel	35	323-4	2	Screw-HH
15	109-0928	1	Pump-Fuel	36	3290-357	2	Nut-HHF, Whiz
16	32128-33	3	Nut-HF	37	322-10	1	Screw-HH
17	321-3	3	Screw-HH	38	104-8300	1	Nut-Flange, NI

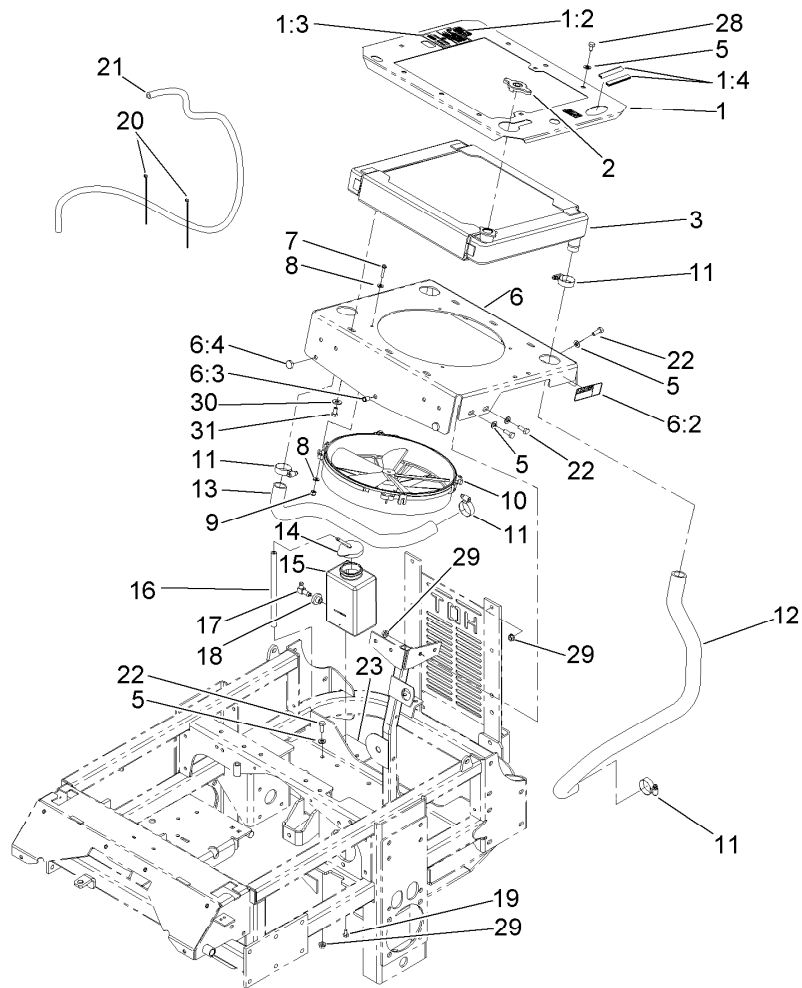




## Engine Housing Assembly

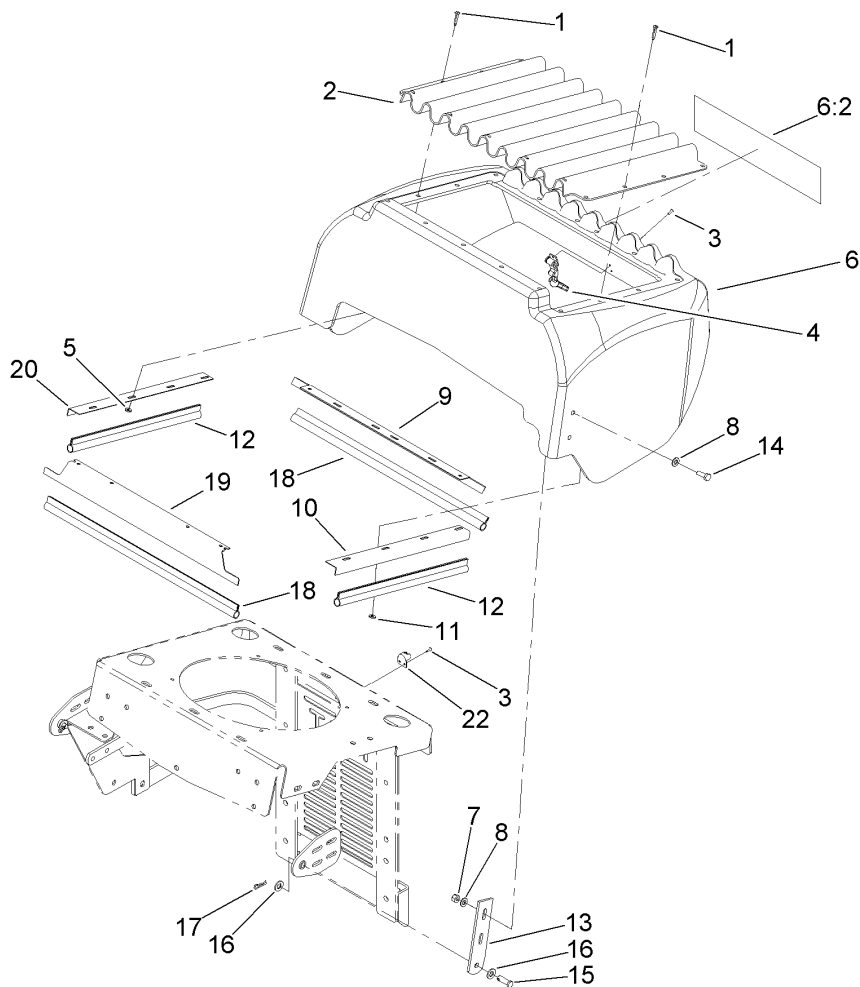
Ref.	Part Number	Qty.	Description
1	110-5779-03	1	Rear Guard ASM
2	322-5	2	Screw-HH
3	322-6	2	Screw-HH
4	3256-23	8	Washer-Flat
5	110-5793	1	RH Radiator Brace ASM
5:2	32148-11	1	Insert-Threaded
6	110-6235-03	2	Strap-Guard
7	110-6213-03	1	LH Radiator Brace ASM
8	32128-20	22	Nut-HF
9	1-633897-03	1	Rib-Top
10	322-3	14	Screw-HH
11	3256-24	5	Washer-Flat
12	323-6	3	Screw-HH
13	323-7	4	Screw-HH
14	117-7840	1	Bracket-Support, LH
14:2	117-7839	1	Decal-Fuse
15	110-6230-03	1	Bracket-Mount, Pump
16	108-5345-03	2	Hood Pivot Plate ASM
17	3290-357	9	Nut-HHF, Whiz
19	98-8332	3	Knob
20	3256-3	2	Washer-Flat
21	109-2365	2	Bumper-Rubber (W/Stud)

Ref.	Part Number	Qty.	Description
22	110-6245	1	Clamp-R
23	117-7830-03	1	Bracket-Relay/Fuse
24	110-6219	1	Front Shield ASM
24:2	110-3853	1	Decal-Danger, Rotating Devices
24:3	110-6220	1	Decal-Routing, Hydro Belt
24:4	110-3852	1	Decal- Warning, Buzzer
24:5	100-3815	2	Grommet-Rubber
24:6	110-6221	1	Decal-Routing, Clutch Belt
24:7	110-3851	1	Decal-Check, Service
24:9	104-2449	1	Decal-Coolant
27	117-7841	1	Strap-Top W/Decal
27:2	117-7838	1	Decal-Relay
29	3256-4	2	Washer-Flat
30	108-5339-03	1	Bracket-Support, RH
31	322-4	4	Screw-HH
32	323-5	2	Screw-HH
33	110-5783-03	1	Plate-ECM Mount
34	321-3	2	Screw-HH
36	1-803075	2	Screw-Head, Truss
37	3296-2	2	Nut-Lock, NI



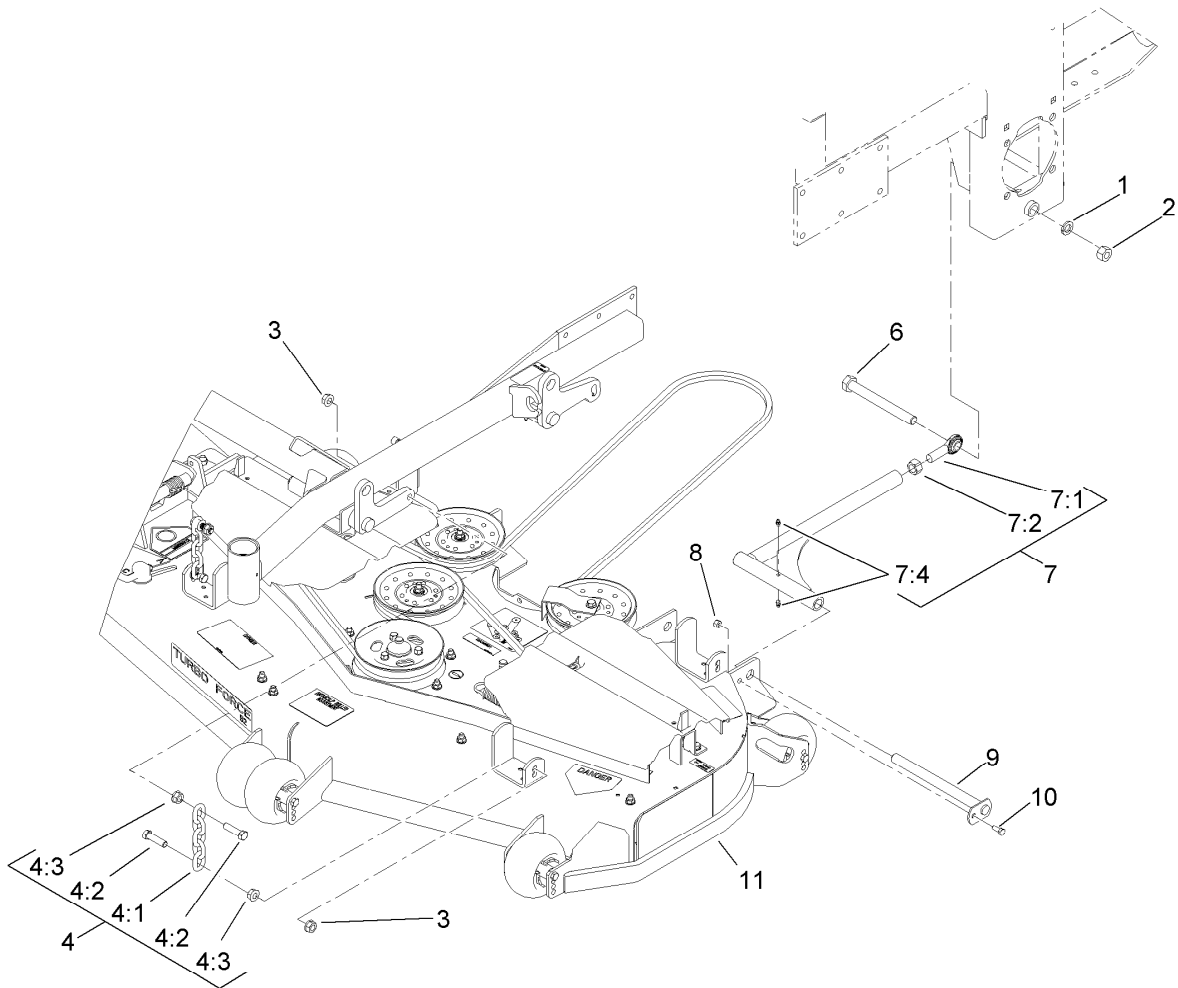
## Cooling System Assembly

<i>Ref.</i>	<i>Part Number</i>	<i>Qty.</i>	<i>Description</i>	<i>Ref.</i>	<i>Part Number</i>	<i>Qty.</i>	<i>Description</i>
1	110-6208	1	Plate-Radiator, Top	12	110-6231	1	Hose-Radiator, Outlet
1:2	65-2690	2	Decal-Surface, Hot	13	103-0074	1	Hose-Inlet, Radiator
1:3	104-2449	1	Decal-Coolant	14	1-643164	1	Cap-Tank, Overflow
1:4	105-7699	2	Strip-Seal	15	1-643163	1	Tank-Overflow
2	1-643161	1	Cap-Radiator	16	109-0293	1	Hose-Fuel
3	103-1046	1	Radiator-Mount	17	1-643259	1	Fitting-Elbow
5	3256-23	14	Washer-Flat	18	1-513645	1	Bushing-Valve, Fuel
6	110-6206	1	Plate-Radiator, Bottom	19	321-2	2	Screw-HH
6:2	1-643253	2	Decal-Fan, Radiator	20	1-303287	2	Tie-Cable
6:3	32148-6	1	Insert-Nut	21	117-0921	1	Hose-Fuel
6:4	1-513658	2	Bumper	22	322-4	8	Screw-HH
7	1-803067	4	Screw	23	117-0922-03	1	Mount-Bottle, Plate
8	3256-16	8	Washer-Flat	28	322-1	6	Screw-HH
9	1-804254	4	Nut	29	32128-20	8	Nut-HF
10	1-633831	1	Fan	30	3256-3	6	Washer-Flat
11	1-633989	4	Clamp-Hose	31	322-2	6	Screw-HH



## Hood Assembly

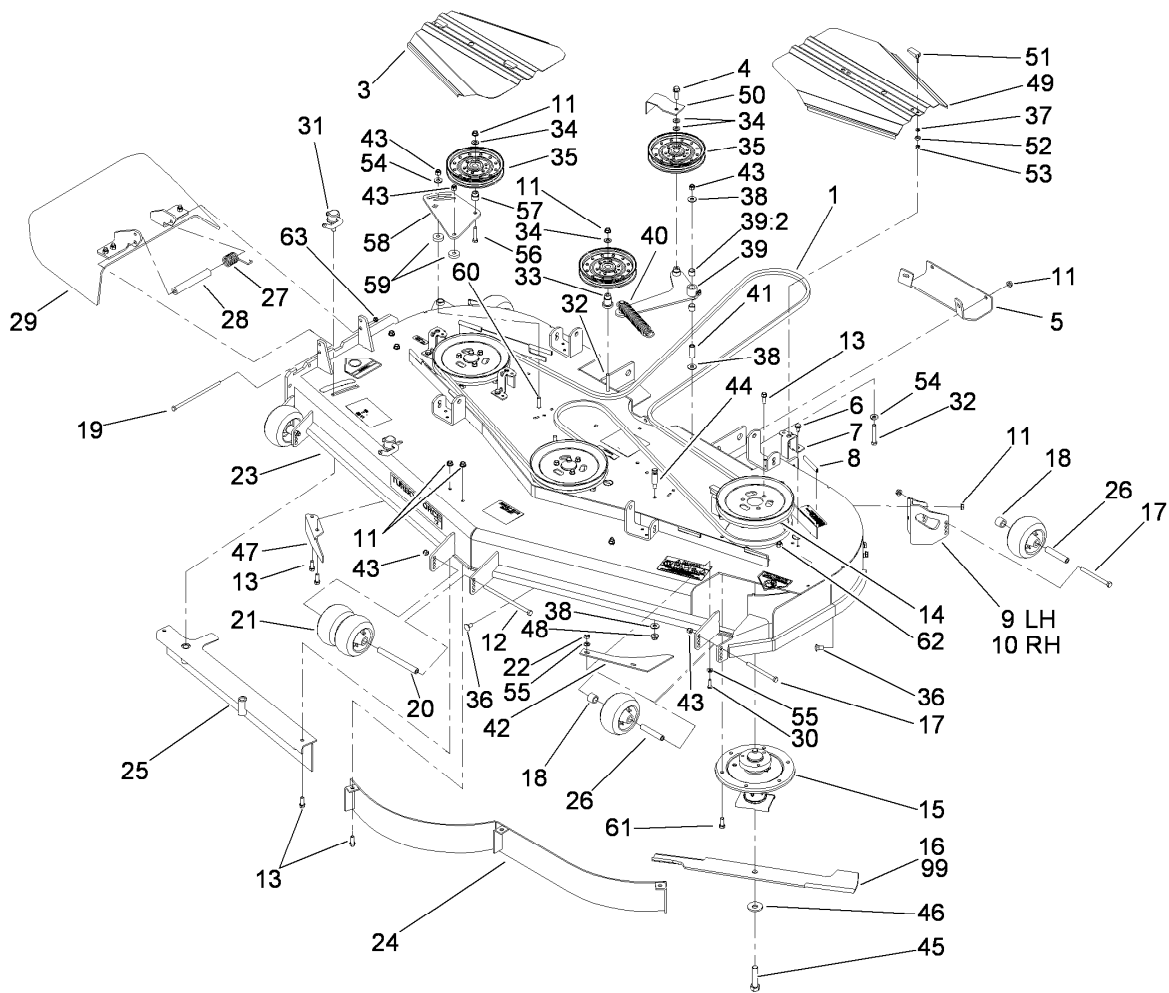
<b>Ref.</b>	<b>Part Number</b>	<b>Qty.</b>	<b>Description</b>
1	1-803072	17	Rivet
2	1-633864-03	1	Screen-Radiator
3	923786	4	Rivet
4	1-643188	1	Latch-Rubber
5	1-303435	4	Washer-Spring
6	110-6218	1	Hood ASM
6:2	106-7456	1	Decal
7	3296-29	4	Nut-Lock, NI
8	3256-23	8	Washer-Flat
9	1-643108-03	1	Angle-Radiator, Bottom
10	1-643105-03	1	Angle-Radiator, LH
11	3256-14	12	Washer-Flat
12	1-643186	2	Seal-Trim
13	108-5337-03	2	Plate-Hinge, Hood
14	322-4	4	Screw-HH
15	1-808285	2	Pin-Clevis
16	3256-24	4	Washer-Flat
17	1-806003	2	Pin-Cotter, Hair
18	1-643187	2	Seal-Trim
19	1-643107-03	1	Angle-Radiator, Top
20	1-643106-03	1	Angle-Radiator, RH
22	1-643189	1	Keeper-Latch, Rubber



## Deck Connection Assembly

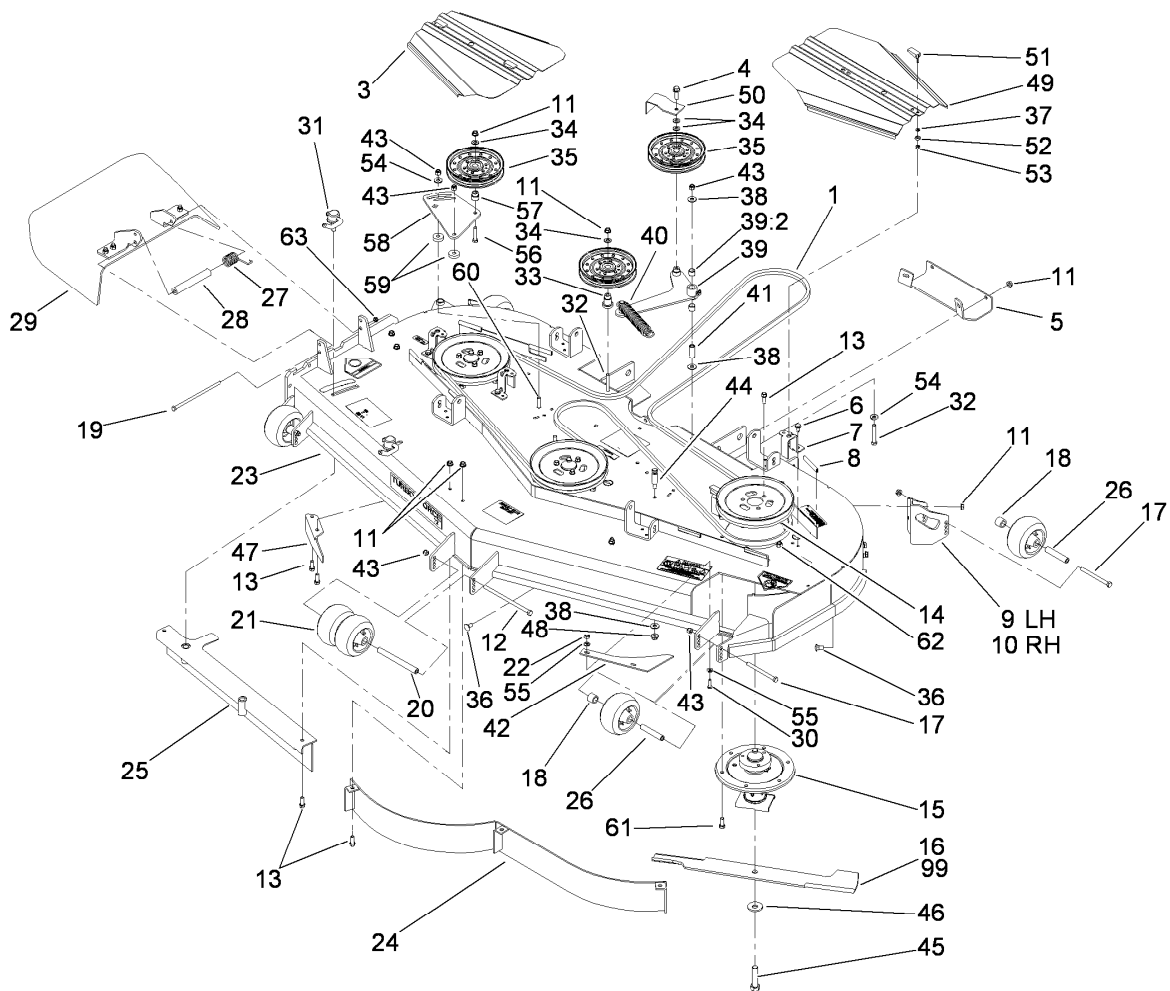
Ref.	Part Number	Qty.	Description
1	3253-8	2	Washer-Lock
2	3217-11	2	Nut-Hex
3	32128-37	8	Nut-HF
4	103-9792	4	Deck Chain ASM
4:1	1-633447	1	Chain-Lift, Deck
4:2	103-1898	2	Screw-HH
4:3	32128-37	2	Nut-HF
6	327-11	2	Screw-HH
7	108-5969	2	Strut ASM
7:1	1-633029	1	Balljoint-Spherical
7:2	3219-6	1	Nut-Hex
7:4	109-1380	1	Fitting-Grease
8	3296-29	2	Nut-Lock, NI
9	1-632199-01	2	Pin-Strut
10	322-3	2	Screw-HH
11		1	Deck ASM ●

● Not serviced separately



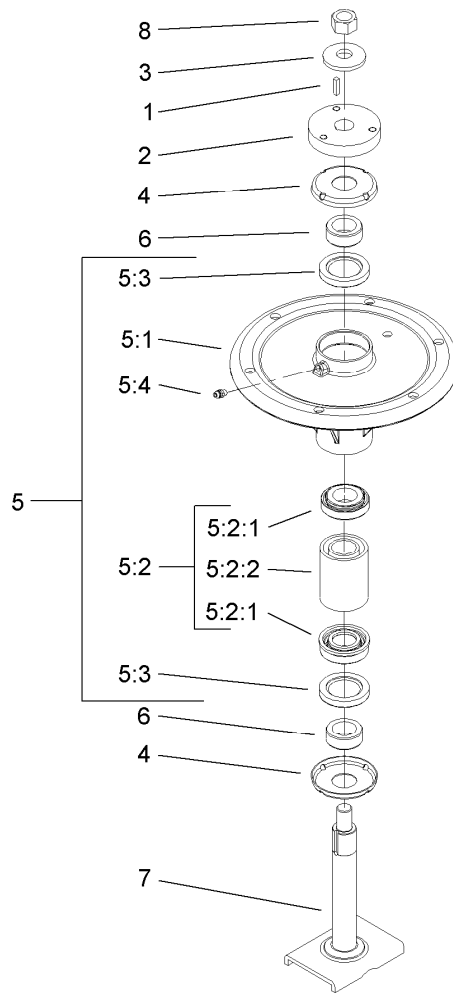
## Deck Assembly

Ref.	Part Number	Qty.	Description	Ref.	Part Number	Qty.	Description
1	105-7790	1	Belt	30	3274-104	2	Screw-HSBH
3	112-8667-03	1	Cover-Belt, RH	31	107-1664	2	Lever ASM
4	3234-24	1	Screw-HHF	32	323-12	2	Screw-HH
5	106-3279-01	1	Plate-Skid	33	106-3214	1	Mount-Pulley
6	32144-70	4	Screw-HWHTF	34	3256-24	4	Washer-Flat
7	108-4121-01	4	Bracket-Cover	35	1-633109	3	Idler-Flat
8	105-7699	8	Strip-Seal	36	3231-1	10	Screw-CARR
9	106-7354-01	1	Mount-Wheel, LH	37	99-3058	4	Washer
10	106-7355-01	1	Mount-Wheel, RH	38	3256-4	3	Washer-Flat
11	3290-357	20	Nut-HHF, Whiz	39	108-5949	1	Deck Idler Arm ASM
12	108-5388	1	Screw-HH	39:2	103-4681	2	Sleeve-Bearing
13	92-1624	15	Screw-HWH	40	110-0818	1	Spring-Extension
14	105-7733	3	Pulley	41	1-603044	1	Bushing
15	110-3933	3	Spindle ASM	42	107-3138	1	Plate-Turbo
16	105-7784-03	3	Blade-Hi Flow, 24.5 Inch	43	3296-39	6	Nut-Lock, NI
17	323-23	4	Screw-HH	44	110-0801	1	Pin-Threaded, Spring Anchor
18	98-7913	4	Tube-Spacer	45	103-0862	3	Screw-Cap
19	322-50	1	Screw-HH	46	103-0865	3	Washer-Blade Bolt, Heavy
20	98-5967	1	Spacer-Wheel	47	106-3216-01	1	Baffle-Discharge
21	1-603299	6	Roller-Scalp, Anti	48	32128-19	1	Nut-HF
22	3296-29	2	Nut-Lock, NI	49	112-8666-03	1	Cover-Belt, LH
23	114-4483	1	Deck Decal ASM	50	108-7220-01	1	Guide-Belt
24	105-7730-01	1	Baffle ASM	51	106-6777	4	Handle-Latch, Swell
25	105-7669-01	1	Baffle ASM	52	106-6778	4	Bushing-Latch, Swell
26	98-7912	4	Tube-Spacer	53	1-804254	4	Nut
27	108-4052	1	Spring-Torsion	54	98-5975	2	Washer-Belleville
28	105-4622	1	Spacer	55	1-303334	4	Washer-Spring
29	108-2792	1	Rubber Deflector ASM				



## Deck Assembly (continued)

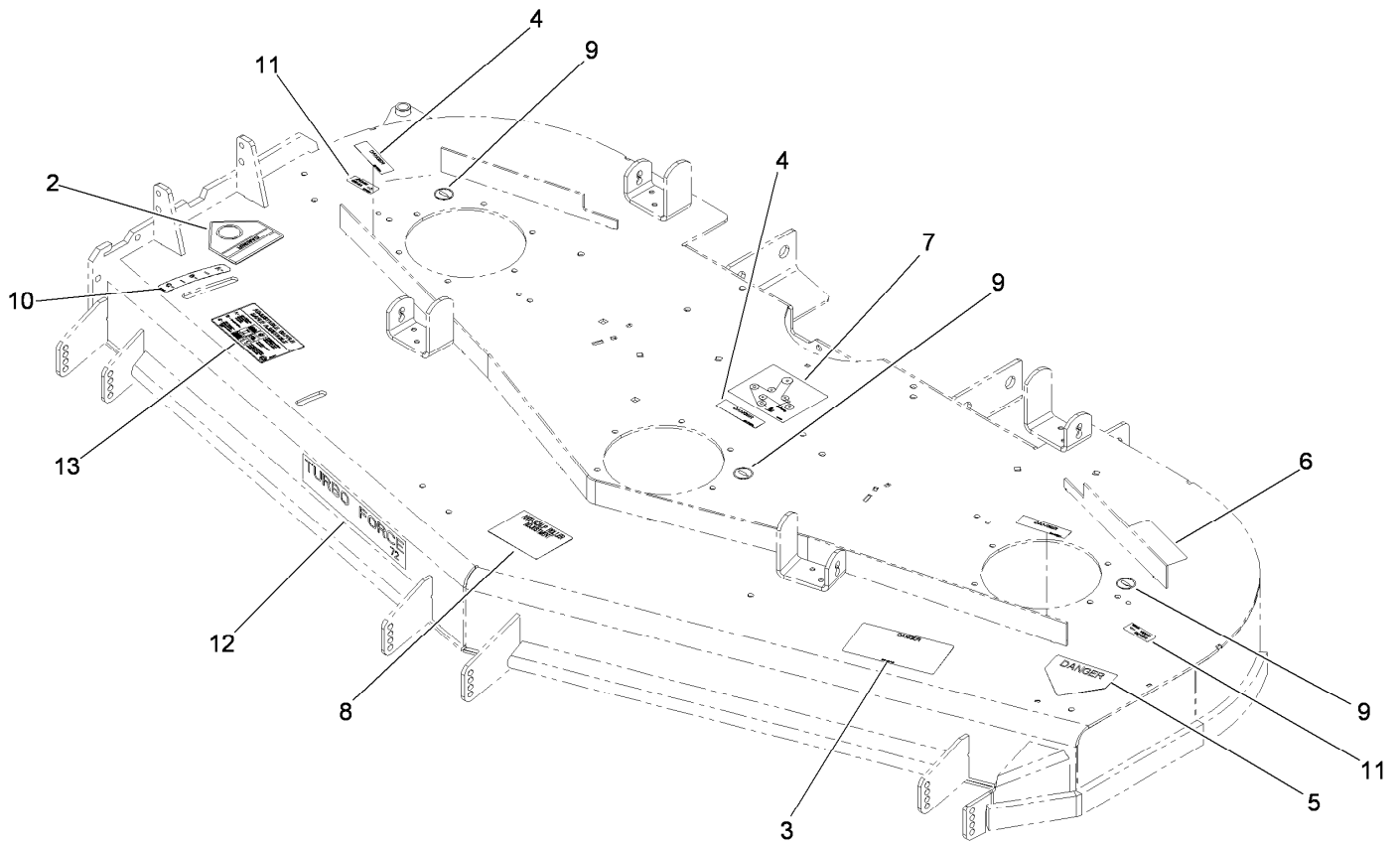
<i>Ref.</i>	<i>Part Number</i>	<i>Qty.</i>	<i>Description</i>	<i>Ref.</i>	<i>Part Number</i>	<i>Qty.</i>	<i>Description</i>
56	323-9	1	Screw-HH	62	33025-00	18	Nut-Lock
57	1-603496	1	Bushing-Idler	63	3296-47	1	Nut-Lock, NI
58	105-7787-01	1	Plate-Idler	99	105-7711-03	3	Blade-Mid Flow, 24.5 Inch
59	105-7788	2	Spacer	99	105-7778-03	3	Blade-Recycler, 24.5 Inch
60	3231-4	2	Screw-CARR	99	105-7719-03	3	Blade-Atomic, 24.5 Inch
61	33115-025	18	Screw-HH	99	105-7712-03	3	Blade-Lo Flow, 24.5 Inch



## Spindle Assembly No. 110-3933

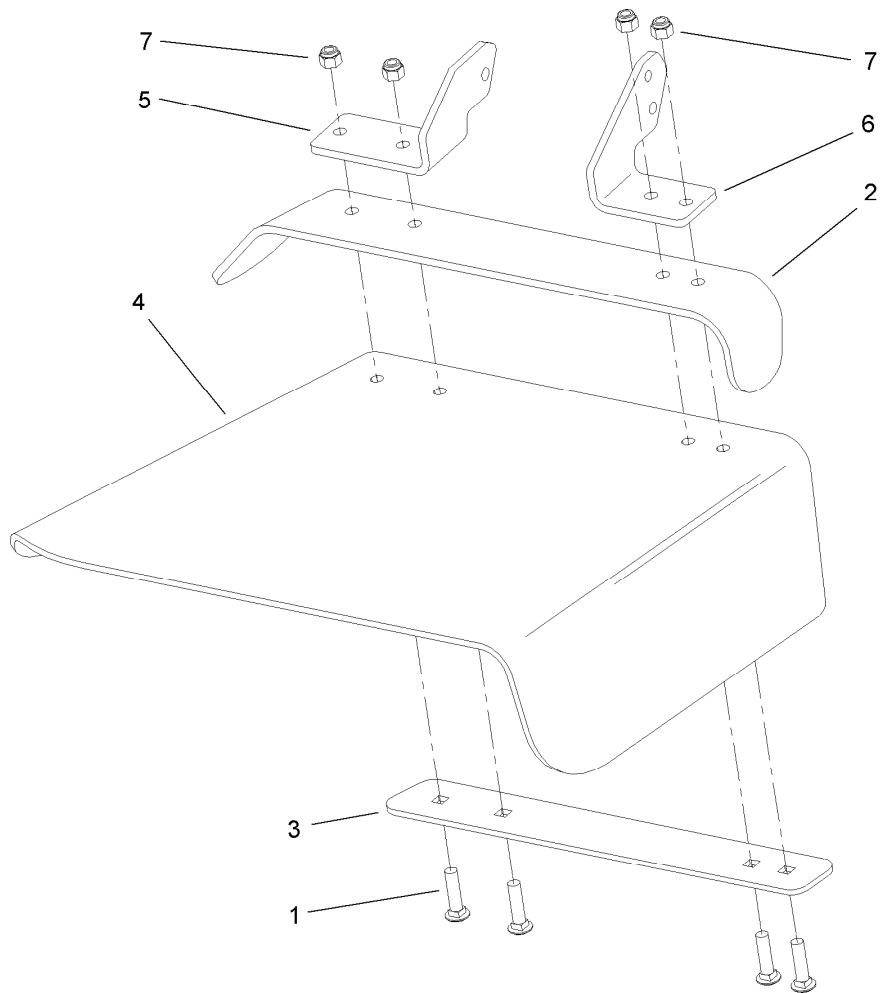
<i>Ref.</i>	<i>Part Number</i>	<i>Qty.</i>	<i>Description</i>
1	10-8040	1	Key-Square
2	108-7793	1	Hub-Pulley
3	103-0865	1	Washer-Blade Bolt, Heavy
4	106-3204	2	Shield-Bearing
5		1	Spindle Bearing ASM ●
5:1	106-3211	1	Housing-Spindle
5:2	108-7711	1	Bearing ASM
5:2:1	108-7710	1	Bearing ASM
5:2:2	106-3206	1	Spacer (Matched Set)
5:3	253-133	2	Seal-Oil
5:4	302-5	1	Fitting-Grease
6	106-3218	2	Spacer-Seal
7	106-3233	1	Spindle Shaft ASM
8	3219-6	1	Nut-Hex

● Not serviced separately



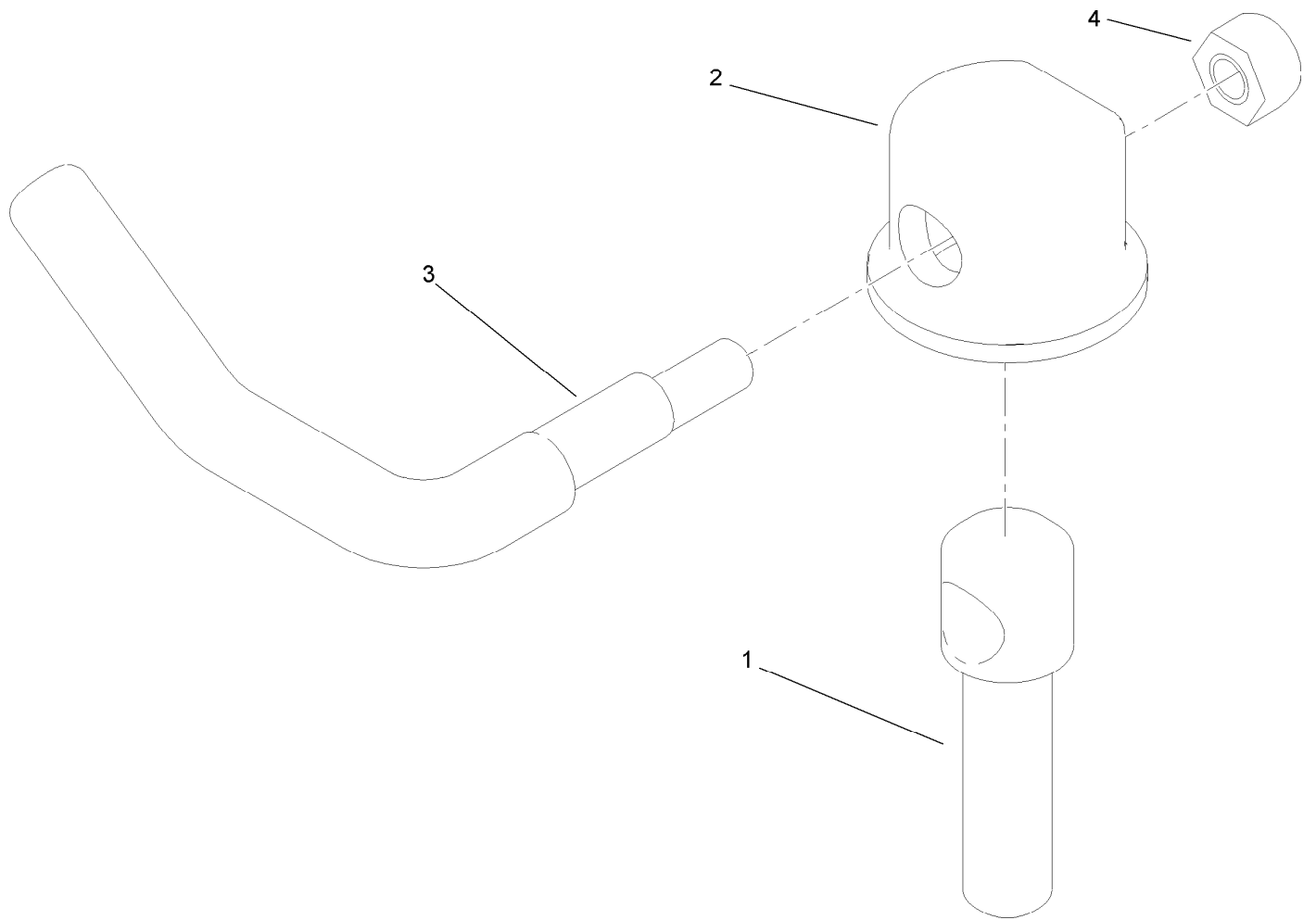
## Deck Decal Assembly No.114-4483

<i>Ref.</i>	<i>Part Number</i>	<i>Qty.</i>	<i>Description</i>
2	54-9220	1	Decal-Danger
3	66-1340	1	Decal-Danger, Thrown Object
4	98-5954	3	Decal-Cover, Missing
5	1-403005	1	Decal-Danger
6	68-8340	1	Decal-Torque
7	108-5981	1	Decal-Routing, Belt
8	105-7798	1	Decal-Scalp, Anti
9	58-6520	3	Decal-Grease
10	110-2067	1	Decal-Setting, Baffle
11	107-1613	2	Decal-Grease
12	107-1620	1	Decal
13	110-2068	1	Decal-Adjustment, Baffle



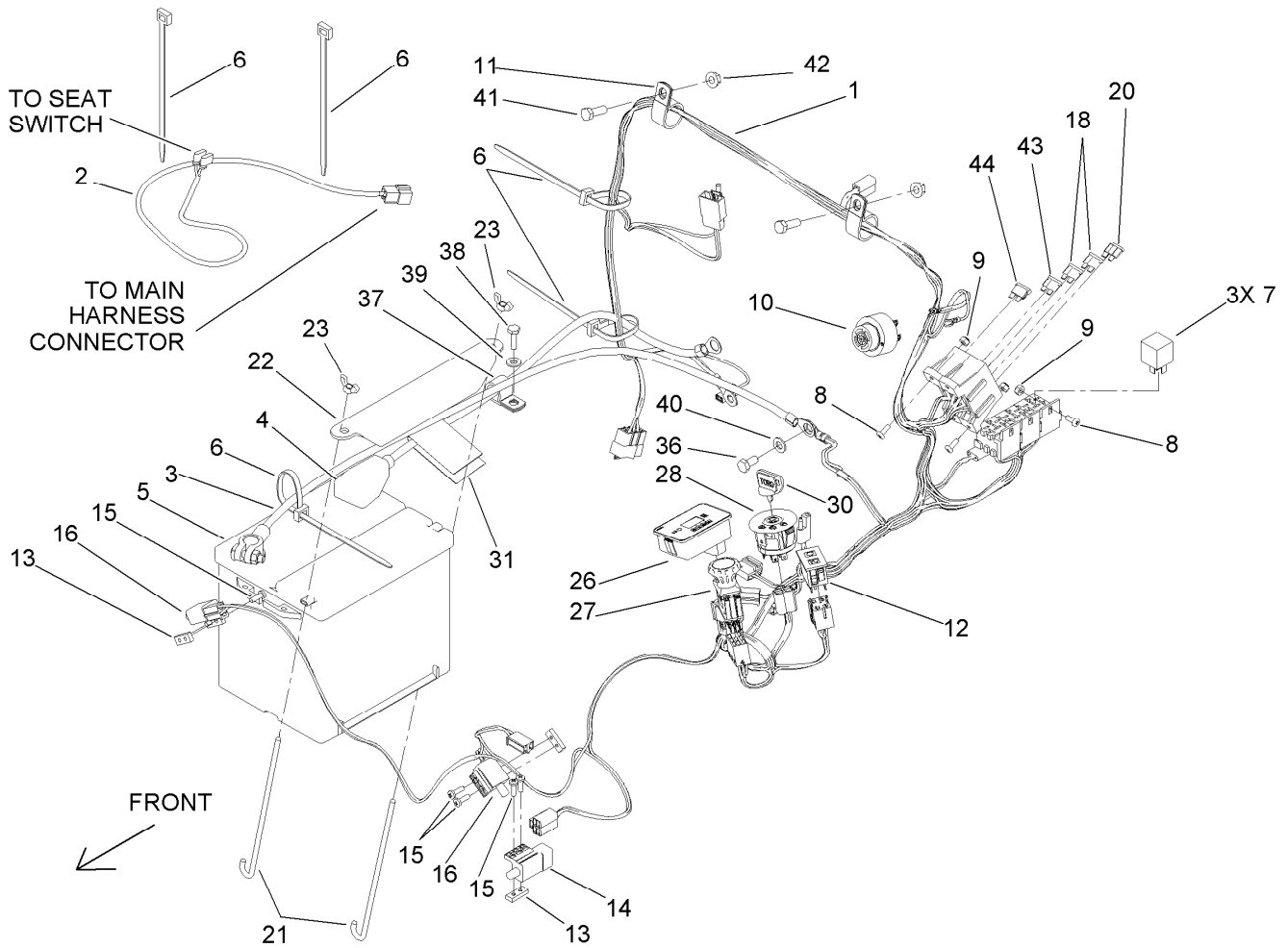
## Rubber Deflector Assembly No. 108-2792

<i>Ref.</i>	<i>Part Number</i>	<i>Qty.</i>	<i>Description</i>
1	3231-4	4	Screw-CARR
2	106-3246-01	1	Deflector
3	106-3248-03	1	Strap-Discharge
4	108-5029	1	Deflector-Rubber
5	108-4059-01	1	Plate-Hinge, Rear
6	106-3253-01	1	Plate-Hinge, Front
7	3296-39	4	Nut-Lock, NI



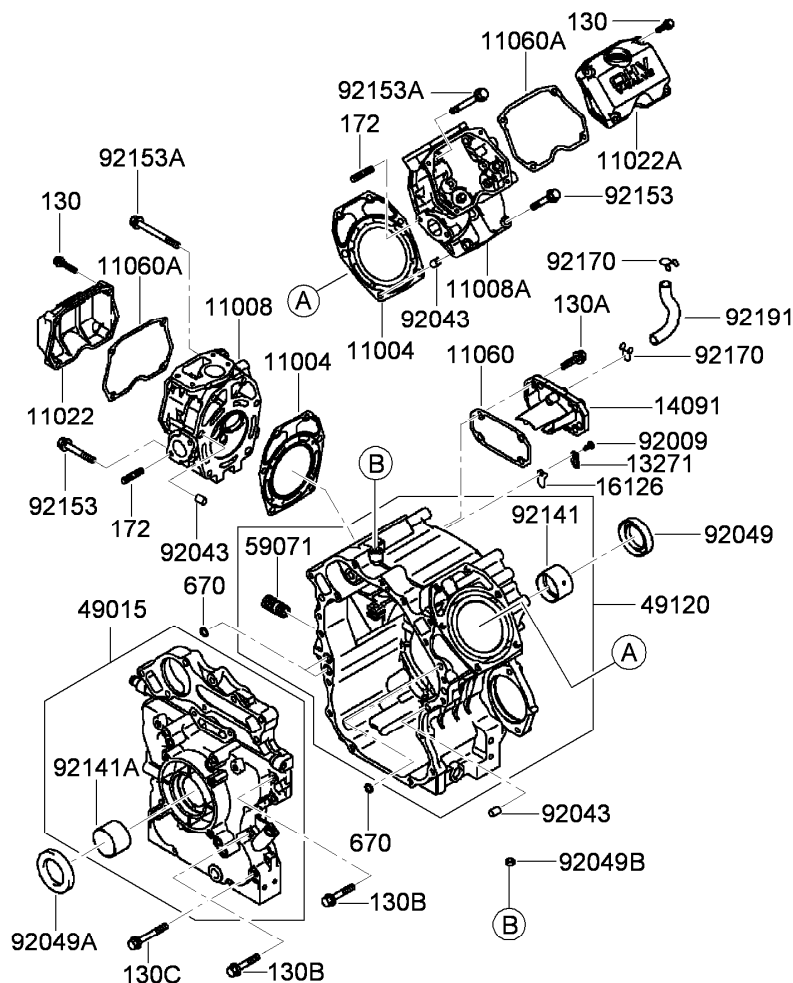
## Lever Assembly No. 107-1664

<i>Ref.</i>	<i>Part Number</i>	<i>Qty.</i>	<i>Description</i>
1	106-3239	1	Screw-Lock
2	107-1644	1	Cap-Lock
3	106-3241	1	Lever-Lock
4	3296-29	1	Nut-Lock, NI



## Electrical Assembly

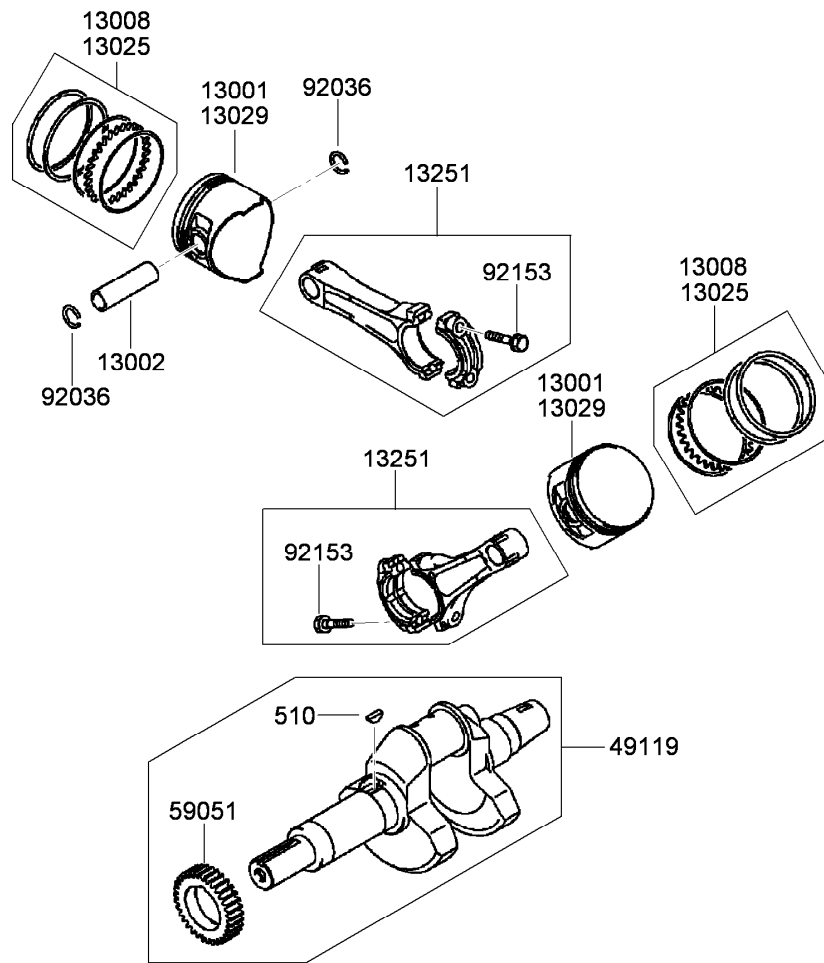
Ref.	Part Number	Qty.	Description	Ref.	Part Number	Qty.	Description
1	117-3854	1	Harness-Wire	21	103-1312	2	Bolt-Holddown
2	103-1227	1	Harness-Wiring, Seat	22	103-1311-03	1	Holddown-Battery
3	110-5786	1	Cable-Battery, Negative	23	1-543792	2	Wingnut
4	110-5775	1	Cable-Battery, Positive	26	112-8650	1	Hour Meter ASM
5	106-5187	1	Battery	27	116-0124	1	Switch-PTO, 10A
6	1-303335	6	Tie-Plastic	28	116-0050	1	Switch-Ignition
7	1-643275	3	Relay	30	63-8360	2	Key-Ignition
8	1-803071	4	Screw	31	107-9309	1	Decal-Instructions, Charging
9	3296-2	4	Nut-Lock, NI	36	33114-016	1	Screw-HH
10	103-0205	1	Alarm-Tone, Dual	37	1-633396	1	Clip-Loom
11	1-643312	2	Clip-Loom	38	321-5	1	Screw-HH
12	110-5739	1	Lamp-Warning	39	3256-22	1	Washer-Flat
13	1-633181	3	Plate-Tapped	40	3256-23	1	Washer-Flat
14	1-633111	1	Switch	41	322-5	2	Screw-HH
15	3290-500	6	Screw-PPH	42	32128-20	2	Nut-HF
16	1-513051	2	Switch-Open, Normally	43	103-1368	1	Fuse-40 Amp
18	218-578	2	Fuse-10 Amp	44	109355	1	Fuse-15 Amp
20	109103	1	Fuse-30 Amp				



## Cylinder and Crankcase Assembly Kawasaki FD791D-AS07

Ref.	Part Number	Qty.	Description	Ref.	Part Number	Qty.	Description
130	130G0630	8	Bolt-Flanged (6X30) ●	49015	49015-6232	1	Cover-Crankcase ●
130A	130G0830	4	Bolt-Flanged (8X30) ●	49120	49120-6134	1	Crankcase ●
130B	130G0845	6	Bolt-Flanged (8X45) ●	59071	59071-2079	1	Joint ●
130C	130G0860	4	Bolt-Flanged (8X60) ●	92009	92009-2308	2	Screw ●
172	172G0822	4	Bolt-Stud (8X22) ●	92043	92043-1037	6	Pin ●
670	670B2011	3	O-Ring (11Mm) ●	92049	92049-2242	1	Seal-Oil, lsd (38X58X11) Ae ●
11004	11004-2142	2	Gasket-Head ●	92049A	92049-2243	1	Seal-Oil, lsd (42X65X9) Ae ●
11008	11008-2145	1	Head-Cylinder ●	92049B	92049-2255	1	Seal-Oil, Vc (8X12X2.5) ●
11008A	11008-2146	1	Head-Cylinder ●	92141	92141-2118	1	Bearing-Plane ●
11022	11022-2072	1	Case-Rocker ●	92141A	92141-2119	1	Bearing-Plane ●
11022A	11022-2073	1	Case-Rocker ●	92153	92153-2131	4	Bolt (8X60) ●
11060	11060-2466	1	Gasket-Breather ●	92153A	92153-2132	8	Bolt (8X85) ●
11060A	11060-2470	2	Gasket-Case, Rocker ●	92170	92170-2002	2	Clamp ●
13271	13271-2105	2	Plate ●	92191	92191-2105	1	Tube ●
14091	14091-2064	1	Cover-Breather ●				
16126	16126-2225	2	Valve-Breather ●				

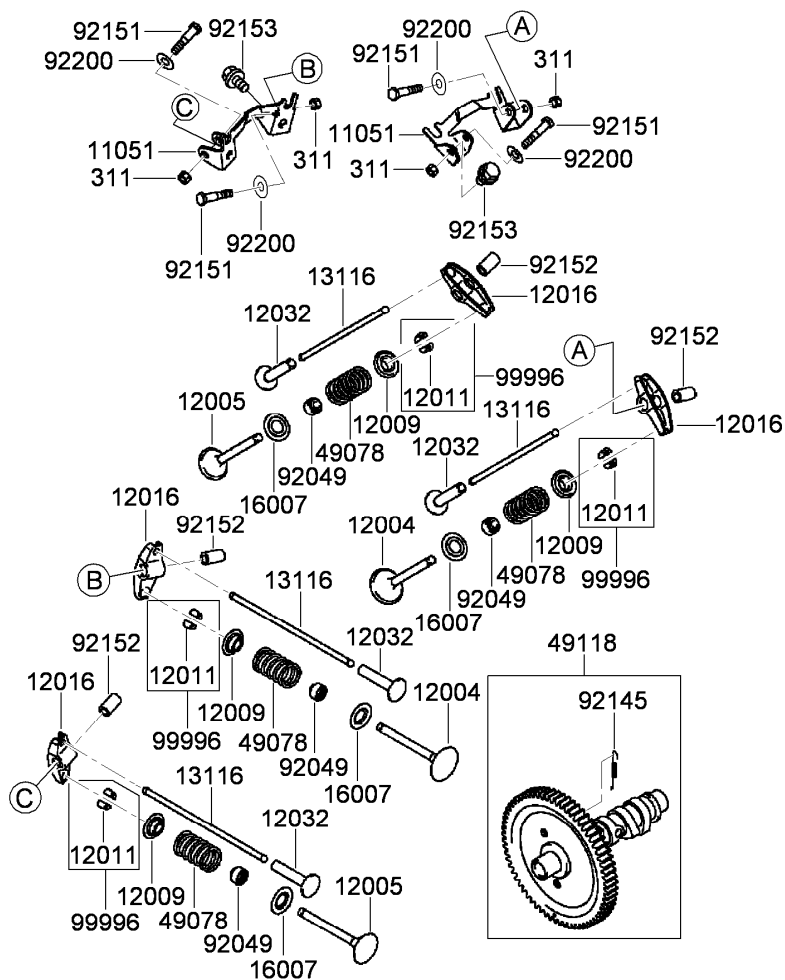
● Obtain parts from [www.kawpowerepc.com](http://www.kawpowerepc.com)



## Piston and Crankshaft Assembly Kawasaki FD791D-AS07

<i>Ref.</i>	<i>Part Number</i>	<i>Qty.</i>	<i>Description</i>
510	510A5100	1	Key-Woodruff ●
13001	13001-2150	2	Piston-Engine ●
13002	13002-2069	2	Pin-Piston ●
13008	13008-6007	2	Ring-Set, Piston ●
13025	13025-2074	1	Piston Ring Set (0.50) ●
13029	13029-2124	1	Piston-Engine (0.50) ●
13251	13251-2058	2	Connecting Rod ASM ●
49119	49119-2228	1	Crankshaft ASM ●
59051	59051-2358	1	Gear-Spur (33T) ●
92036	92036-008	4	Ring-Snap ●
92153	92153-2054	4	Bolt (7X35.2) ●

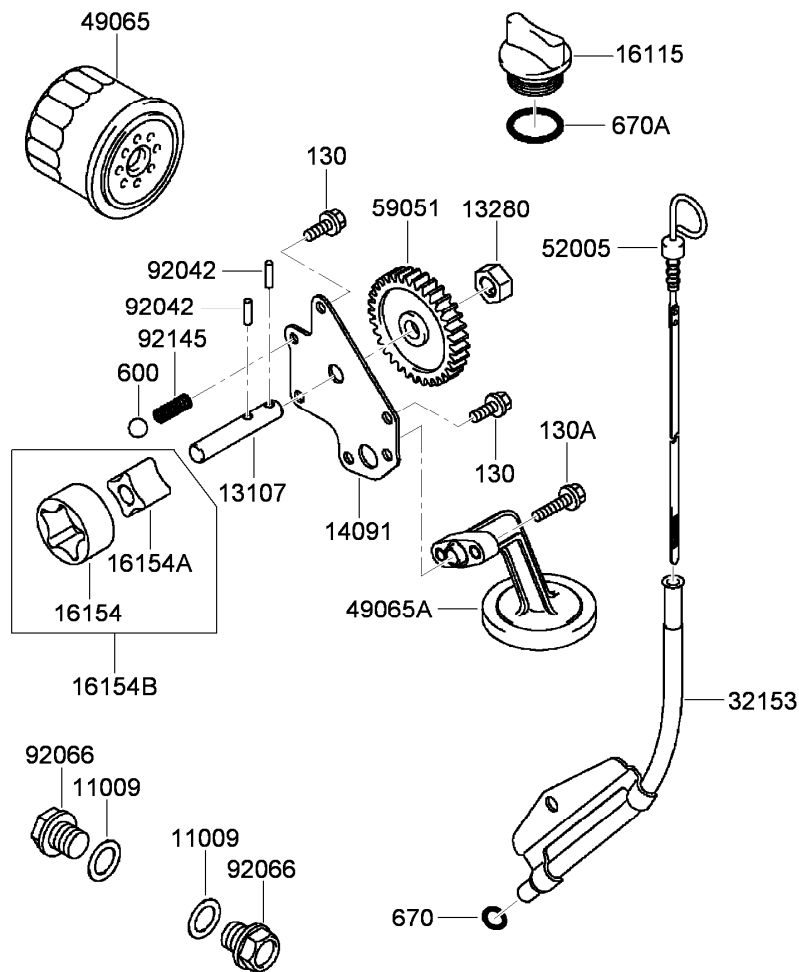
● Obtain parts from [www.kawpowerepc.com](http://www.kawpowerepc.com)



## Valve and Camshaft Assembly Kawasaki FD791D-AS07

Ref.	Part Number	Qty.	Description
311	311B0600	4	Nut-Hex (6Mm) ●
11051	11051-2092	2	Bracket ●
12004	12004-2113	2	Valve-Intake ●
12005	12005-2100	2	Valve-Exhaust ●
12009	12009-2060	4	Retainer-Spring, Valve ●
12011	12011-2052	8	Collet ●
12016	12016-2066	4	Arm-Rocker ●
12032	12032-2060	4	Tappet ●
13116	13116-2074	4	Rod-Push ●
16007	16007-2052	4	Seat-Spring ●
49078	49078-2060	4	Spring-Valve, Engine ●
49118	49118-2138	1	Camshaft ●
92049	92049-2100	4	Seal-Oil,Vsb (7X12X5.5X9.7) ●
92145	92145-2085	1	Spring ●
92151	92151-2165	4	Bolt (M6) ●
92152	92152-2077	4	Collar ●
92153	92153-2062	4	Bolt (8X14) ●
92200	92200-2151	4	Washer (8.1X18X0.5) ●
99996	99996-2077	4	Collet Kit ●

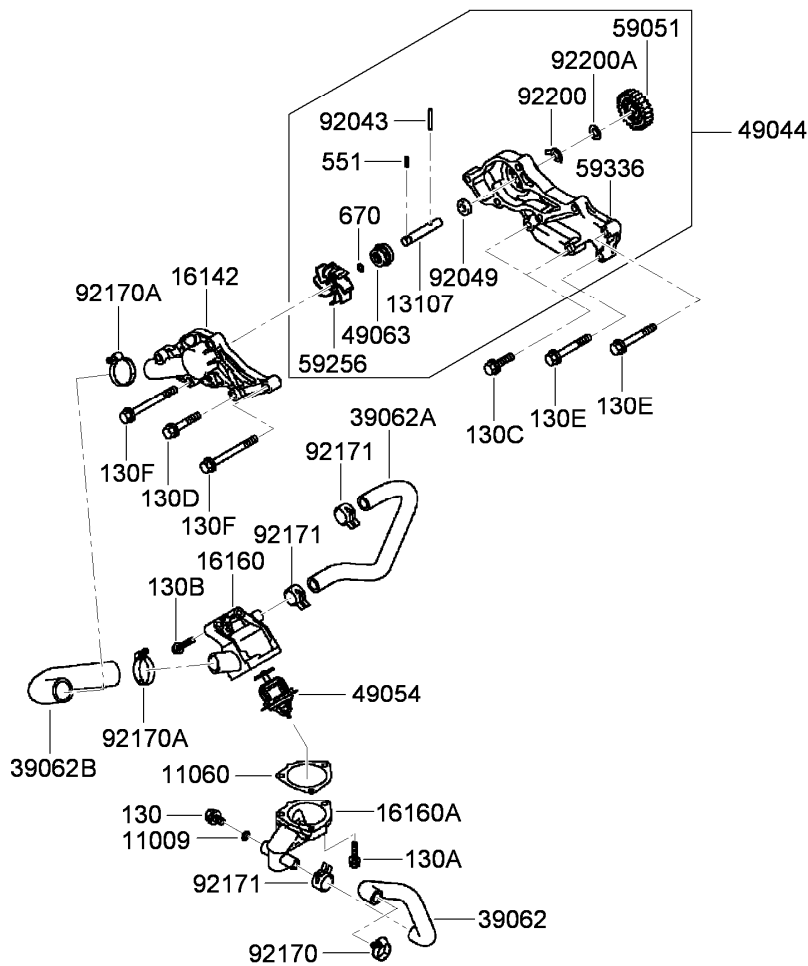
● Obtain parts from [www.kawpowerepc.com](http://www.kawpowerepc.com)



## Lubrication Equipment Assembly Kawasaki FD791D-AS07

Ref.	Part Number	Qty.	Description
130	130G0616	3	Bolt-Flanged (6X16) ●
130A	130G0625	2	Bolt-Flanged (6X25) ●
600	600A1300	1	Ball-Steel (13/32) ●
670	670B2010	1	O-Ring (10Mm) ●
670A	670B3025	1	O-Ring (25Mm) ●
11009	11009-2566	2	Gasket-Plug, Drain ●
13107	13107-2281	1	Shaft-Pump, Oil ●
13280	13280-2061	1	Holder-Pump, Oil ●
14091	14091-2065	1	Cover-Pump, Oil ●
16115	16115-2126	1	Cap-Filler, Oil ●
16154	16154-1075	1	Rotor-Pump, Outer ●
16154A	16154-1076	1	Rotor-Pump, Inner ●
16154B	16154-1079	1	Rotor-Pump ●
32153	32153-2076-9H	1	Pipe-Gauge, Oil ●
49065	49065-2071	1	Filter-Oil ●
49065A	49065-2082	1	Filter-Oil ●
52005	52005-2132	1	Gauge-Oil ●
59051	59051-2354	1	Gear-Spur (33T) ●
92042	92042-014	2	Pin ●
92066	92066-2099	2	Plug-Drain ●
92145	92145-2132	1	Spring ●

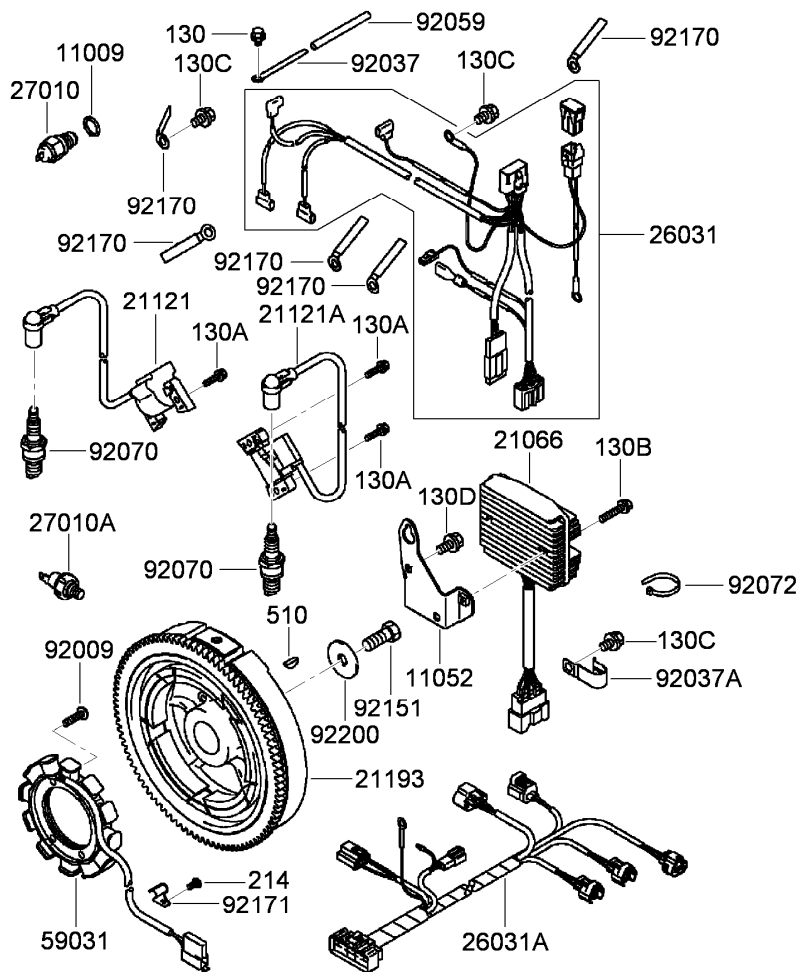
● Obtain parts from [www.kawpowerepc.com](http://www.kawpowerepc.com)



## Cooling Equipment Assembly Kawasaki FD791D-AS07

Ref.	Part Number	Qty.	Description	Ref.	Part Number	Qty.	Description
130	130C0812	1	Bolt-Flanged (8X12) ●	39062A	39062-2098	1	Hose-Cooling ●
130A	130G0625	3	Bolt-Flanged (6X25) ●	39062B	39062-2101	1	Hose-Cooling ●
130B	130G0635	2	Bolt-Flanged (6X35) ●	49044	49044-2067	1	Pump-Water ●
130C	130G0830	2	Bolt-Flanged (8X30) ●	49054	49054-2058	1	Thermostat ●
130D	130G0845	1	Bolt-Flanged (8X45) ●	49063	49063-1056	1	Seal-Mechanical ●
130E	130G0860	2	Bolt-Flanged (8X60) ●	59051	59051-2355	1	Gear-Spur (25T) ●
130F	130G0880	4	Bolt-Flanged (8X80) ●	59256	59256-2069	1	Impeller ●
551	551A0314	1	Pin-Dowel (3X14) ●	59336	59336-2078	1	Case-Pump ●
670	670B1507	1	O Ring (7Mm) ●	92043	92043-2237	1	Pin ●
11009	11009-3028	1	Gasket (8.2X12X1) ●	92049	92049-2111	1	Seal-Oil ●
11060	11060-2475	1	Gasket-Thermostat ●	92170	92170-1283	1	Clamp ●
13107	13107-2097	1	Shaft-Impeller ●	92170A	92170-1284	2	Clamp ●
16142	16142-2077	1	Cover-Pump ●	92171	92171-2056	3	Clamp ●
16160	16160-2139	1	Body, Upp ●	92200	92200-2134	1	Washer ●
16160A	16160-6002	1	Body-Valve ●	92200A	92200-2135	1	Washer (10.2X19X0.8) ●
39062	39062-2083	1	Hose-Cooling ●				

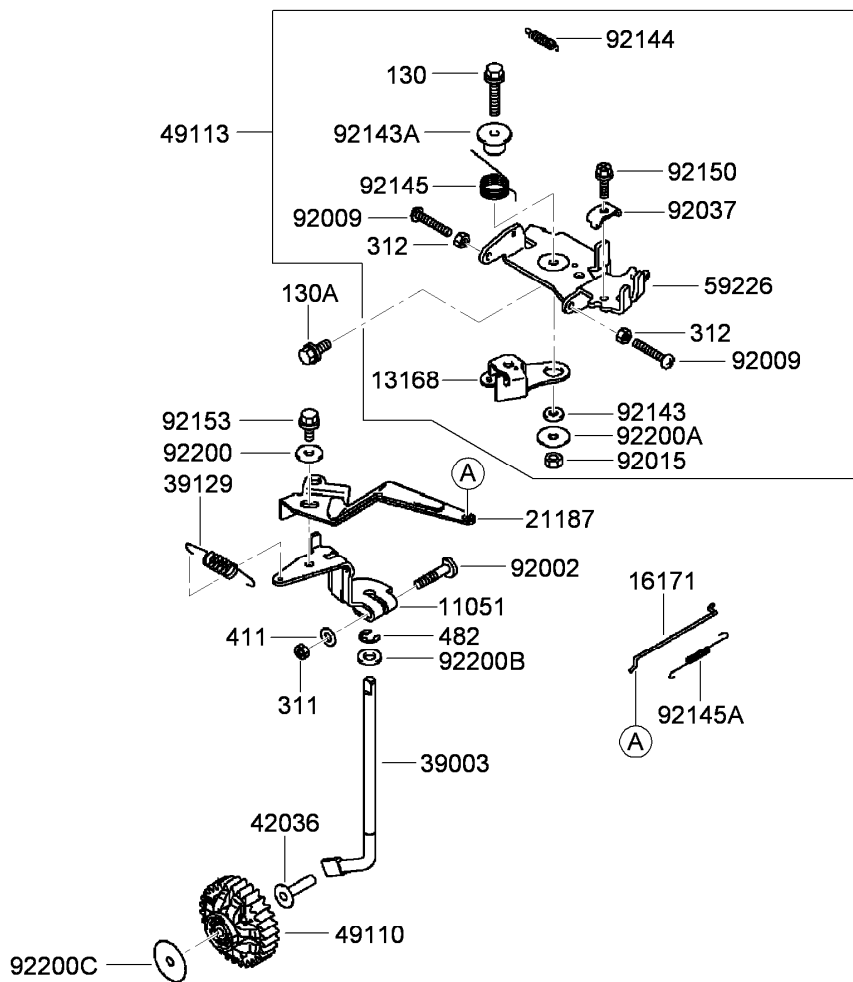
● Obtain parts from [www.kawpowerepc.com](http://www.kawpowerepc.com)



## Electric Equipment Assembly Kawasaki FD791D-AS07

Ref.	Part Number	Qty.	Description	Ref.	Part Number	Qty.	Description
130	130C0608	1	Bolt-Flanged (6X8) ●	27010	27010-2182	1	Switch ●
130A	130G0520	4	Bolt-Flanged (5X20) ●	27010A	27010-7001	1	Switch ●
130B	130G0630	2	Bolt-Flanged (6X30) ●	59031	59031-2127	1	Coil-Charging ●
130C	130G0812	3	Bolt-Flanged (8X12) ●	92009	92009-2273	4	Screw (6X25) ●
130D	130G0816	2	Bolt-Flanged (8X16) ●	92037	92037-2006	1	Clamp ●
214	214B0510	1	Screw-Pan (5X10) ●	92037A	92037-2101	1	Clamp ●
510	510A5100	1	Key-Woodruff ●	92059	92059-2011	1	Tube (5X6X75) ●
11009	11009-2766	1	Gasket (16X24X1) ●	92070	92070-2112	2	Spark Plug-Bpr4Es, (Ngk) Solid ●
11052	11052-2058	1	Bracket ●	92072	92072-1195	1	Band ●
21066	21066-2079	1	Regulator-Voltage ●	92151	92151-2097	1	Bolt (12X30) ●
21121	21121-2090	1	Coil-Ignition, No. 1 ●	92170	92170-2060	5	Clamp ●
21121A	21121-2091	1	Coil-Ignition, No. 2 ●	92171	92171-2060	1	Clamp ●
21193	21193-2187	1	Flywheel ASM ●	92200	92200-2119	1	Washer (12.2X40X3.0) ●
26031	26031-2070	1	Harness, C-Unit ●				
26031A	26031-2074	1	Harness ●				

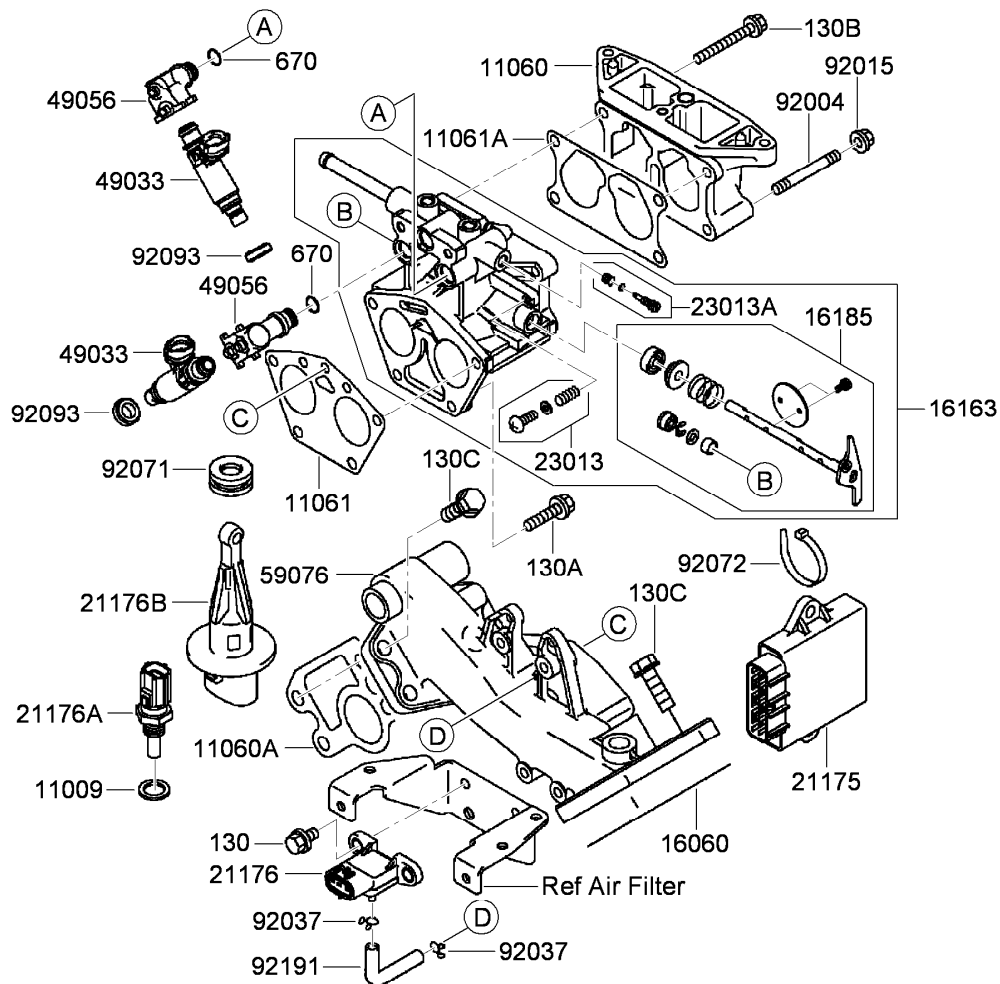
● Obtain parts from [www.kawpowerepc.com](http://www.kawpowerepc.com)



## Control Equipment Assembly Kawasaki FD791D-AS07

Ref.	Part Number	Qty.	Description	Ref.	Part Number	Qty.	Description
130	130B0630	1	Bolt-Flanged (6X30) ●	92002	92002-2269	1	Bolt (6X28) ●
130A	130G0614	2	Bolt-Flanged (6X14) ●	92009	92009-2381	2	Screw (5X30) ●
311	311B0600	1	Nut-Hex (6Mm) ●	92015	92015-2051	1	Nut ●
312	312B0500	2	Nut-Hex (5Mm) ●	92037	92037-2209	1	Clamp ●
411	411B0600	1	Washer-Plain (6Mm) ●	92143	92143-2135	1	Collar (6X13X2.3) ●
482	482J7000	1	Circlip-Type E (7Mm) ●	92143A	92143-2148	1	Collar ●
11051	11051-2113	1	Bracket ●	92144	92144-2052	1	Spring ●
13168	13168-2466	1	Lever-Throttle ●	92145	92145-2058	1	Spring ●
16171	16171-2094	1	Link ●	92145A	92145-2106	1	Spring ●
21187	21187-2076	1	Arm ASM ●	92150	92150-2182	1	Bolt (5X18) ●
39003	39003-2091	1	Arm-Pivot ●	92153	92153-0009	1	Bolt (6X12) ●
39129	39129-2105	1	Spring-Governor ●	92200	92200-2035	1	Washer ●
42036	42036-2060	1	Sleeve ●	92200A	92200-2108	1	Washer (6.5X22X1.2) ●
49110	49110-2094	1	Governor ASM ●	92200B	92200-2120	1	Washer (8.3X16X2.3) ●
49113	49113-2173	1	Control Panel ASM ●	92200C	92200-2152	1	Washer (6.2X30X0.5) ●
59226	59226-2328	1	Panel-Control ●				

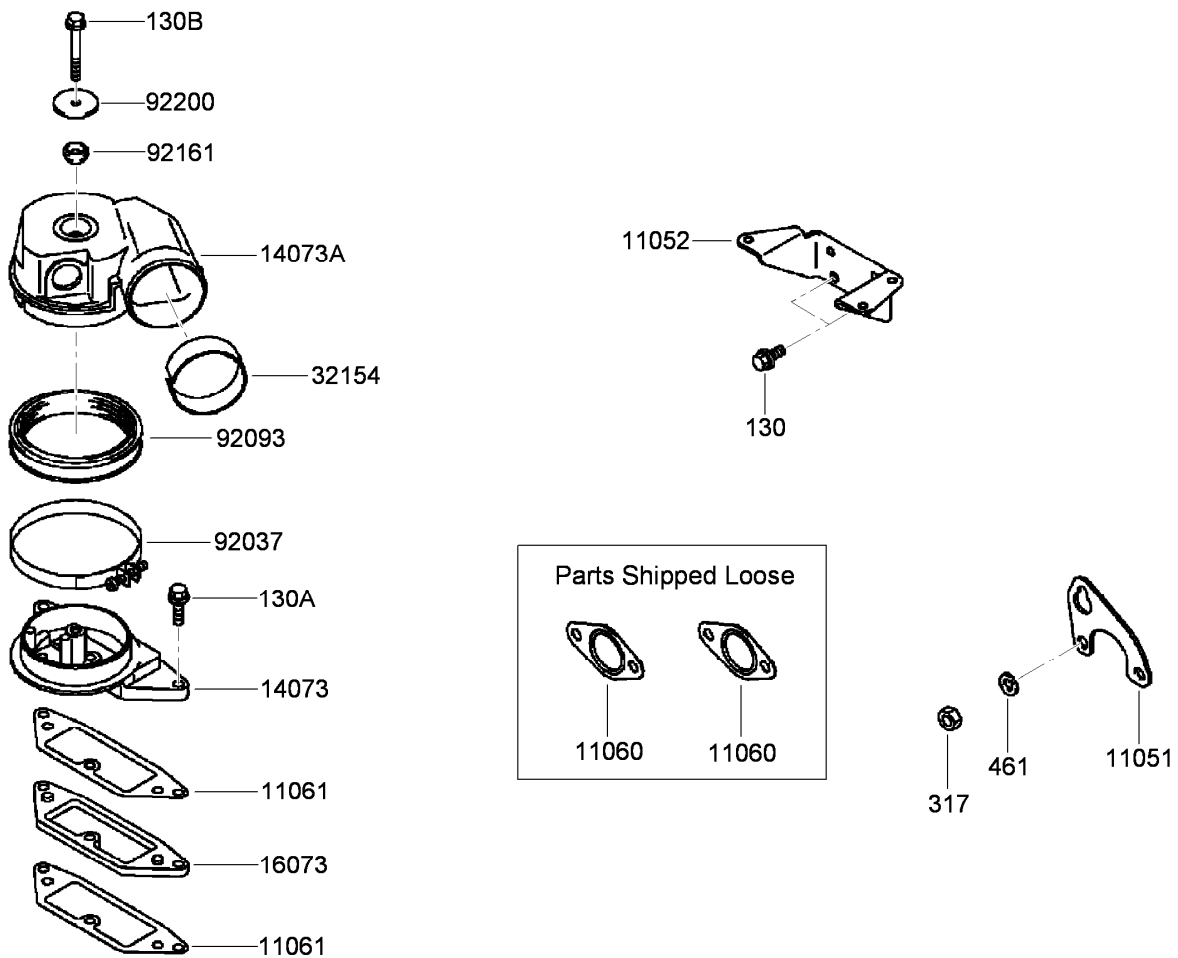
● Obtain parts from [www.kawpowerepc.com](http://www.kawpowerepc.com)



## Throttle Assembly Kawasaki FD791D-AS07

Ref.	Part Number	Qty.	Description	Ref.	Part Number	Qty.	Description
130	130G0610	2	Bolt-Flanged (6X10) ●	21176A	21176-2097	1	Sensor ●
130A	130G0625	2	Bolt-Flanged (6X25) ●	21176B	21176-2106	1	Sensor ●
130B	130G0645	2	Bolt-Flanged (6X45) ●	23013	23013-2065	1	Screw ASM ●
130C	130G0825	8	Bolt-Flanged (8X25) ●	23013A	23013-2066	1	Screw ASM ●
670	670E1508	2	O-Ring (8Mm) ●	49033	49033-2059	2	Nozzle-Injection ●
11009	11009-1376	1	Gasket (12.5X18X1.5) ●	49056	49056-2060	2	Pipe-Injection ●
11060	11060-2468	1	Gasket-Manifold, Intake ●	59076	59076-2080	1	Manifold-Intake ●
11060A	11060-2469	1	Gasket-Manifold, Intake ●	92004	92004-2133	2	Stud (6X100) ●
11061	11061-2058	1	Gasket,Throttle ●	92015	92015-1193	2	Nut ●
11061A	11061-2075	1	Gasket-Pipe, Intake ●	92037	92037-2163	2	Clamp ●
16060	16060-2194	1	Pipe-Intake ●	92071	92071-2140	1	Grommet ●
16163	16163-2067	1	Throttle ASM ●	92072	92072-1195	1	Band ●
16185	16185-2046	1	Throttle Valve ASM ●	92093	92093-2119	2	Seal ●
21175	21175-2059	1	Control Unit-Electronic ●	92191	92191-2133	1	Tube (4X7X65) ●
21176	21176-1095	1	Sensor ●				

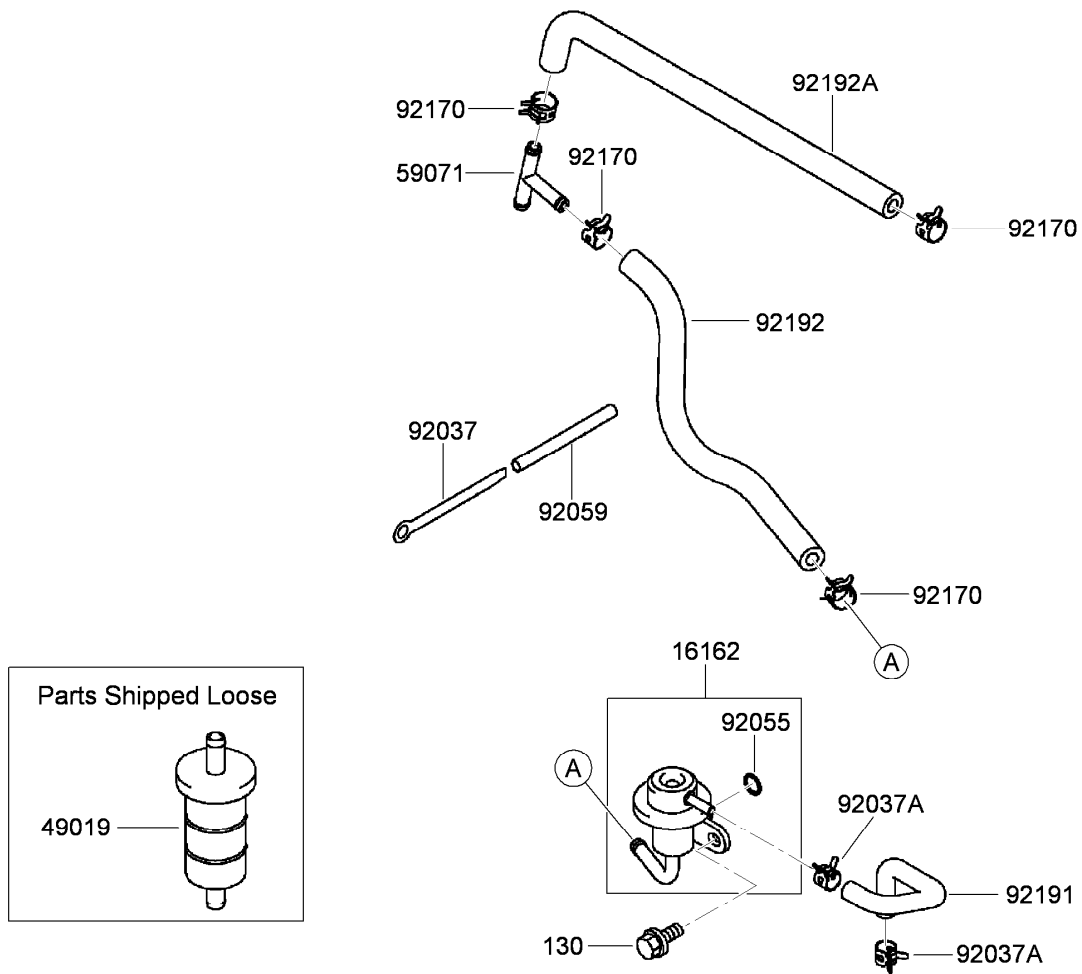
● Obtain parts from [www.kawpowerepc.com](http://www.kawpowerepc.com)



## Air Filter and Muffler Assembly Kawasaki FD791D-AS07

<i>Ref.</i>	<i>Part Number</i>	<i>Qty.</i>	<i>Description</i>
130	130G0614	2	Bolt-Flanged (6X14) ●
130A	130G0625	3	Bolt-Flanged (6X25) ●
130B	130G0645	1	Bolt-Flanged (6X45) ●
317	317R0800	1	Nut-Hex, Small (8Mm) ●
461	461F0800	1	Washer-Spring (8Mm) ●
11051	11051-2088	1	Bracket ●
11052	11052-2062	1	Bracket ●
11060	11060-2467	2	Gasket-Muffler ●
11061	11061-2085	2	Gasket ●
14073	14073-2084	1	Duct-Low ●
14073A	14073-2086	1	Duct-Upp ●
16073	16073-2216	1	Insulator ●
32154	32154-2059	1	Pipe-Duct, Inside ●
92037	92037-1654	1	Clamp ●
92093	92093-2118	1	Seal ●
92161	92161-2058	1	Damper ●
92200	92200-2144	1	Washer ●

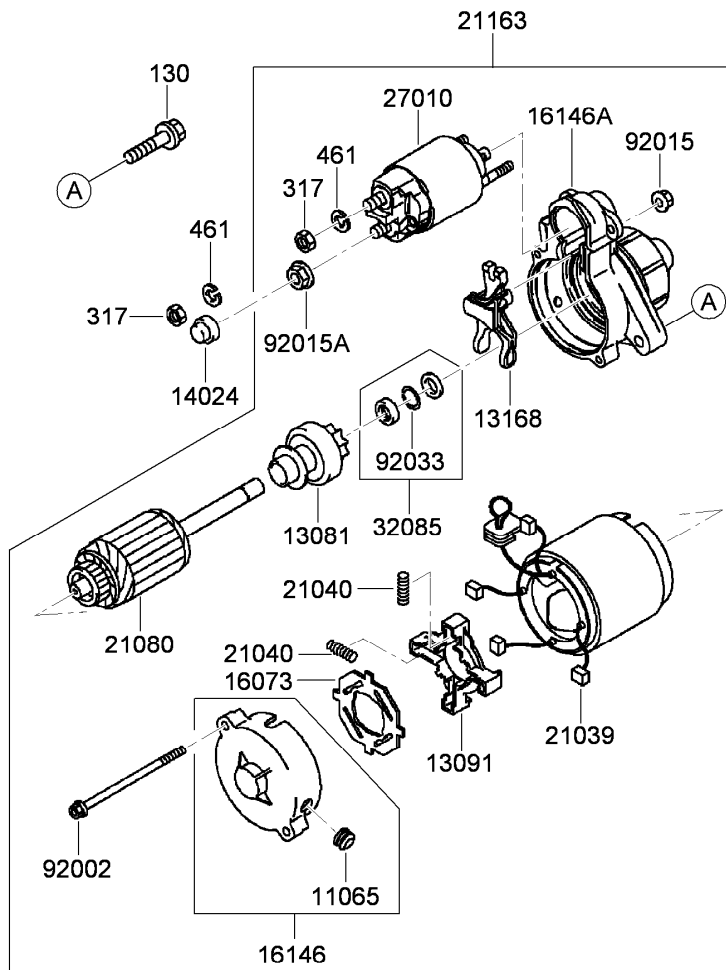
● Obtain parts from [www.kawpowerepc.com](http://www.kawpowerepc.com)



## Fuel Tank and Valve Assembly Kawasaki FD791D-AS07

<i>Ref.</i>	<i>Part Number</i>	<i>Qty.</i>	<i>Description</i>
130	130G0612	2	Bolt-Flanged (6X12) ●
16162	16162-2055	1	Regulator-Fuel ●
49019	49019-1055	1	Filter-Fuel ●
59071	59071-3705	1	Joint ●
92037	92037-2006	1	Clamp ●
92037A	92037-2083	2	Clamp ●
92055	92055-2187	1	O-Ring, Fuel Regulator ●
92059	92059-2011	1	Tube (5X6X75) ●
92170	92170-2009	4	Clamp ●
92191	92191-2165	1	Tube ●
92192	92192-2108	1	Tube (6.2X13.2X200) ●
92192A	92192-2109	1	Tube (6.2X13.2X230) ●

● Obtain parts from [www.kawpowerepc.com](http://www.kawpowerepc.com)



## Starter Assembly Kawasaki FD791D-AS07

Ref.	Part Number	Qty.	Description
130	130G0835	2	Bolt-Flanged (8X35) ●
317	317B0800	2	Nut-Hex, Small (8Mm) ●
461	461F0800	2	Washer-Spring (8Mm) ●
11065	11065-2118	1	Cap ●
13081	13081-2085	1	Clutch Asm ●
13091	13091-2068	1	Brush Holder ●
13168	13168-2131	1	Lever-Shift ●
14024	14024-2205	1	Cover ●
16073	16073-2098	1	Insulator ●
16146	16146-2235	1	Cover ASM ●
16146A	16146-2239	1	Cover ASM ●
21039	21039-2059	4	Brush ●
21040	21040-2052	4	Spring-Brush ●
21080	21080-2054	1	Armature ●
21163	21163-2130	1	Starter-Electric ●
27010	27010-2122	1	Switch ●
32085	32085-2097	1	Stopper ●
92002	92002-2277	2	Bolt ●
92015	92015-2146	2	Nut ●
92015A	92015-2147	1	Nut ●
92033	92033-2081	1	Ring-Snap ●

● Obtain parts from [www.kawpowerepc.com](http://www.kawpowerepc.com)

# Attachments and Accessories

## For 74254 Z580 Z Master, With 72in TURBO FORCE Side Discharge Mower

<b>Product Name</b>	<b>Model/Part</b>
Z Stand Kit .....	105-1622
Blade-Mid Flow, 24.5 inch .....	105-7711-03
Blade-Lo Flow, 24.5 inch .....	105-7712-03
Blade-Atomic, 24.5 inch .....	105-7719-03
Blade-Recycler, 24.5 inch .....	105-7778-03
Blade-Hi Flow, 24.5 inch .....	105-7784-03
Recycler Kit .....	107-1612
Striping Kit .....	107-1630
Turbo Baffle Kit .....	107-1634
Light Kit .....	107-9880
6 Pack Blade, 24.5 inch Hi-Flow .....	108-1120
6 Pack Blade, 24.5 inch Atomic .....	108-1126
Roller Striping Kit .....	108-2162
6 Pack-Blade, 24.5 inch Mid-Flow .....	110-0404
6 Pack-Blade, 24.5 inch Lo-Flow .....	110-0410
6 Pack-Blade, 24.5 inch Recycler .....	110-0411
Bimini Folding Shade Assembly .....	115-4510
Chute Gate Kit .....	78522
Deluxe Suspension Seat Kit .....	78530
Deck Triple Bag Assembly .....	78535
Blower and Drive Kit .....	78539
DFS E-Z Vac Bagger .....	78545
Filter Minder Gauge .....	99-4664
Hitch Kit .....	99-8925

**Notes:**

**Notes:**



**Count on it.**