



Count on it.

Parts Catalog

Sand Pro® 2020 Traction Unit

Model No. 08884—Serial No. 310000301 and Up

Ordering Replacement Parts

To order replacement parts, please supply the part number, the quantity, and the description of each part desired.

Understanding Reference Numbers

Each identified part in an illustration has a reference number. The reference number for a part also appears in the parts list, along with other information about the part.

This catalog uses two special reference number formats, one to indicate parts in a service assembly and another to indicate the quantity of a given part in an illustration.

Service Assembly Reference Numbers

Parts in service assemblies have reference numbers in the form a:b. The a represents the reference number of the entire service assembly and the b represents a sequential number unique to each part within the service assembly.

For example, a wheel assembly might be identified by reference number 6, the tire by 6:1, the valve by 6:2, and the wheel by 6:3. When you order the assembly identified by reference number 6, you receive all parts identified by reference numbers 6:1, 6:2, and 6:3. However, you may also order any part individually. Reference numbers of this type appear in illustration and in parts lists.

Reference Numbers Indicating Quantity

In an illustration, if a reference number indicates more than one part, the reference number has the form nX y. The n represents the quantity of the part, the X is the multiplication symbol, and the y represents the reference number.

For example, in an illustration, the reference number 2X 37 means that two of the parts identified by reference number 37 are indicated.

List of Abbreviations

AR: as required

ASM: assembly

BBC: blade brake control

BHTF: button head thread forming

CARR: carriage

CCW: counter clockwise

CW: clockwise

DEG: degrees

ECM: electronic control module

EXT: external

FH: flat head

GA: gauge

HD: heavy-duty

HF: hex flange

HH: hex head

HHF: hex head flange

HHFTF: hex head flange thread forming

HJ: hex jam

HLH: hex lag head

HOC: height-of-cut

HSBH: hex socket button head

HSFH: hex socket flat head

HSH: hex socket head

HWH: hex washer head

HWHTF: hex washer head thread forming

HYD: hydraulic

LH: left hand

LP: Liquid Propane

NI: nylon insert

NPTF: national pipe thread fine

PFH: phillips flat head

PPH: phillips pan head

PPHTF: phillips pan head thread forming

PRH: phillips round head

PTH: phillips truss head

PTO: power-take-off

RH: right hand

ROPS: roll-over protection system

RRB: rear roller brush

SFH: slotted fillister head

SHH: slotted hex head

SHWH: slotted hex washer head

SPH: slotted pan head

SQH: square head

SRH: slotted round head

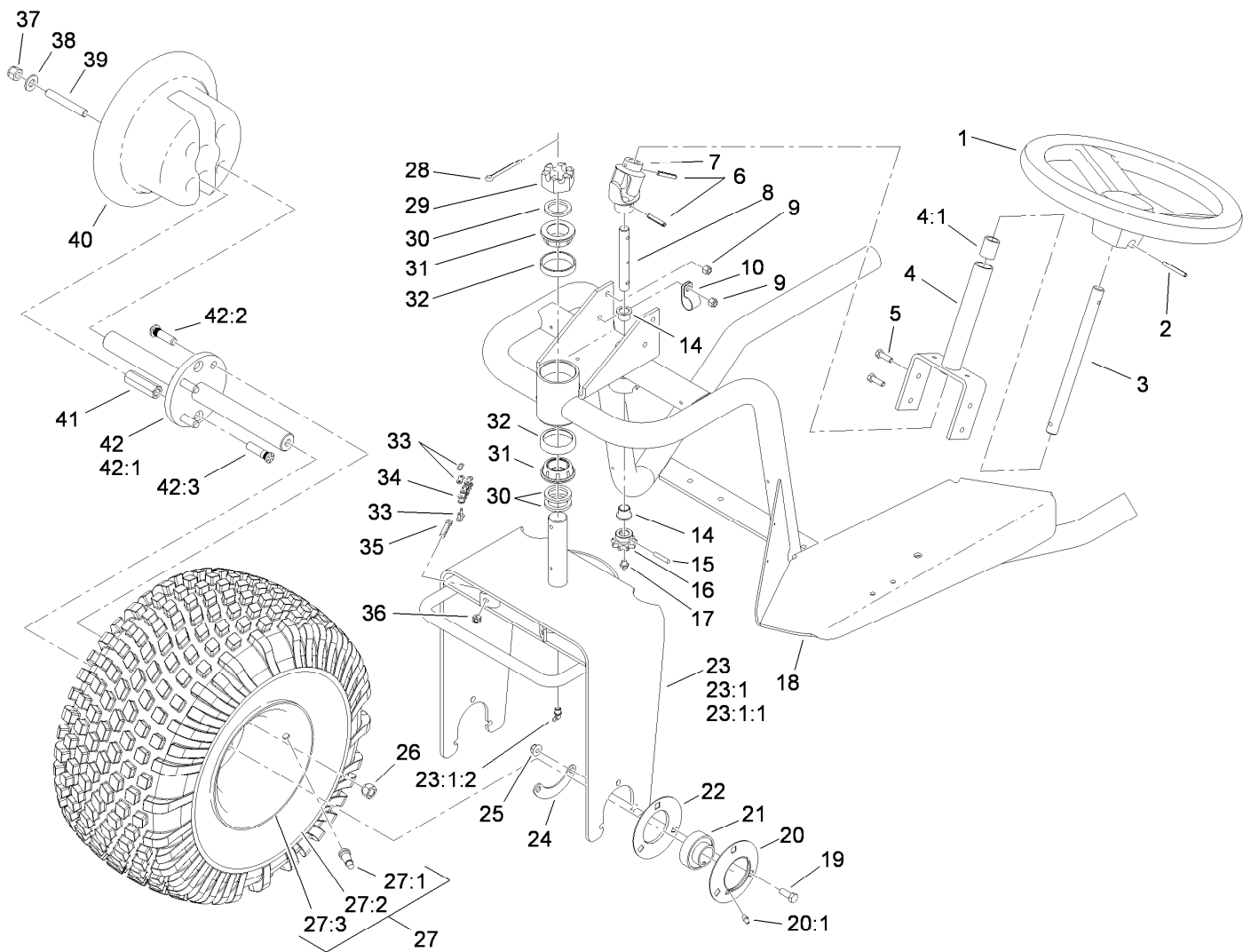
STD: standard

TAP: self tapping

TTH: torx truss head

Contents

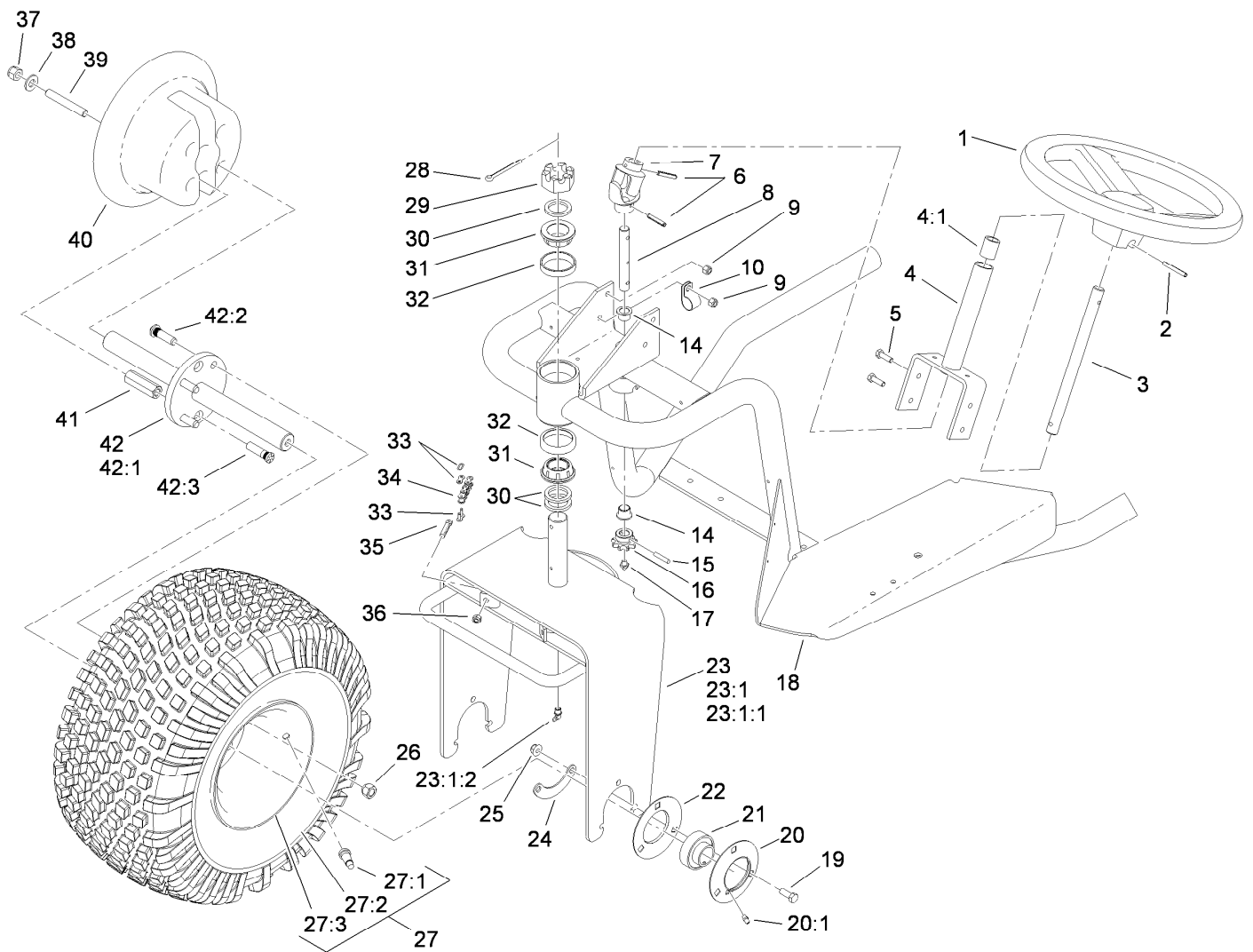
Front Wheel and Steering Assembly	4
Traction Pedal Assembly	6
Pump Control Lever Assembly	7
Hydraulic Pump Installation Assembly	8
Variable Hydraulic Piston Pump Assembly No. 114-0613	9
Rear Wheel Drive Assembly	11
Hydraulic Cylinder Assembly No. 114-0626	12
Hydraulic Motor Assembly No. 75-9831	13
Hydraulic Motor Assembly No. 75-9840	14
Seat Assembly	15
Fuel Tank Assembly	16
Engine Installation Assembly	17
Dash Panel Assembly	18
Shroud, Relay, Air Cleaner and Oil Cooler Assembly	19
Air Cleaner Assembly No. 95-5805	21
Hydraulic Oil Reservoir and Filter Assembly	22
Lift Valve Installation Assembly	23
Valve Assembly No. 43-1710	24
Brake Installation Assembly	25
Brake Assembly No. 104-7705	26
Attachments and Accessories	27



Front Wheel and Steering Assembly

Ref.	Part Number	Qty.	Description	Ref.	Part Number	Qty.	Description
1	76-1420	1	Wheel-Steering	21	251-352	2	Bearing
2	32121-111	1	Pin-Roll	22	85-8950	2	Flangette-Standard
3	85-6610	1	Shaft-Steering	23		1	Fork And Grease Fitting ASM ●
4	92-5035	1	Steering Post ASM	23:1		1	Fork ASM ●
4:1	256-185	1	Bushing	23:1:1	112-7670-01	1	Offset Fork ASM
5	322-5	4	Screw-HH	23:1:2	302-33	1	Fitting-Grease
6	32121-15	2	Pin-Roll	24	112-7671	2	Flange-Keeper
7	85-9200	1	Knuckle-Steering	25	104-8301	6	Nut-Flange, NI
8	98-0928	1	Shaft-Steering, Lower	26	242-50	4	Nut-Lug
9	3296-29	4	Nut-Lock, NI	27		1	Wheel And Tire ASM ●
10	2412-41	2	Clamp	27:1	5108	1	Valve
14	65-8770	2	Bushing-Bellcrank	27:2	85-8290	1	Tire-2Ply, Knobby
15	98-0973	1	Pin-Grooved	27:3	94-6116	1	Wheel-Rear
16	85-9180	1	Sprocket-Steering			1	Pin-Cotter
17	302-2	1	Fitting-Grease	28	3272-37	1	Nut-Hex, Slotted
18	95-0600-01	1	Frame ASM	29	32136-9	1	Nut-Hex, Slotted
19	323-6	6	Screw-HH	30	18-6320	3	Washer-Steering
20	85-8940	2	Flangette-Relube	31	254-70	2	Bearing-Cone
20:1	302-5	1	Fitting-Grease	32	254-61	2	Cup-Bearing

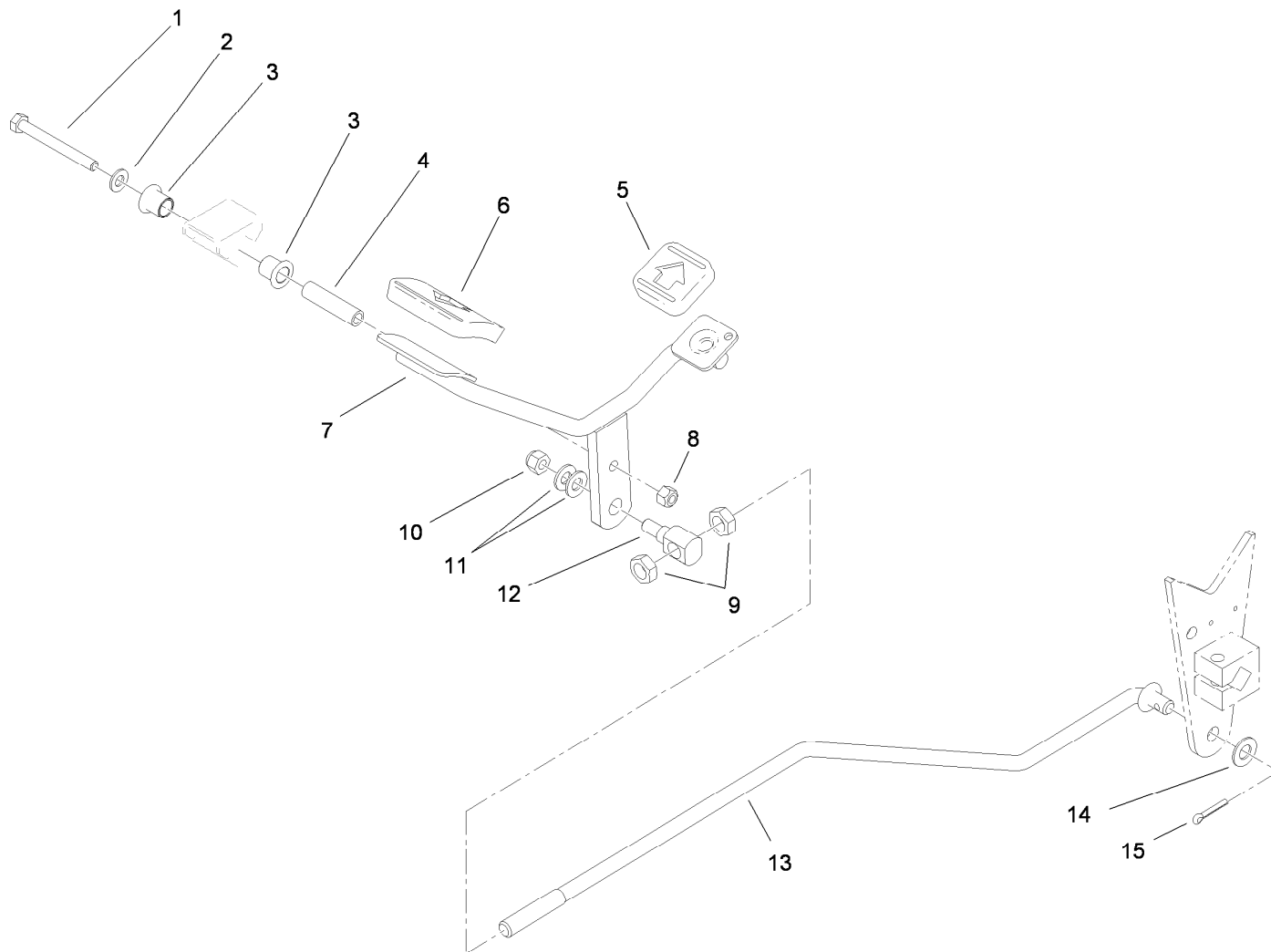
● Not serviced separately



Front Wheel and Steering Assembly (continued)

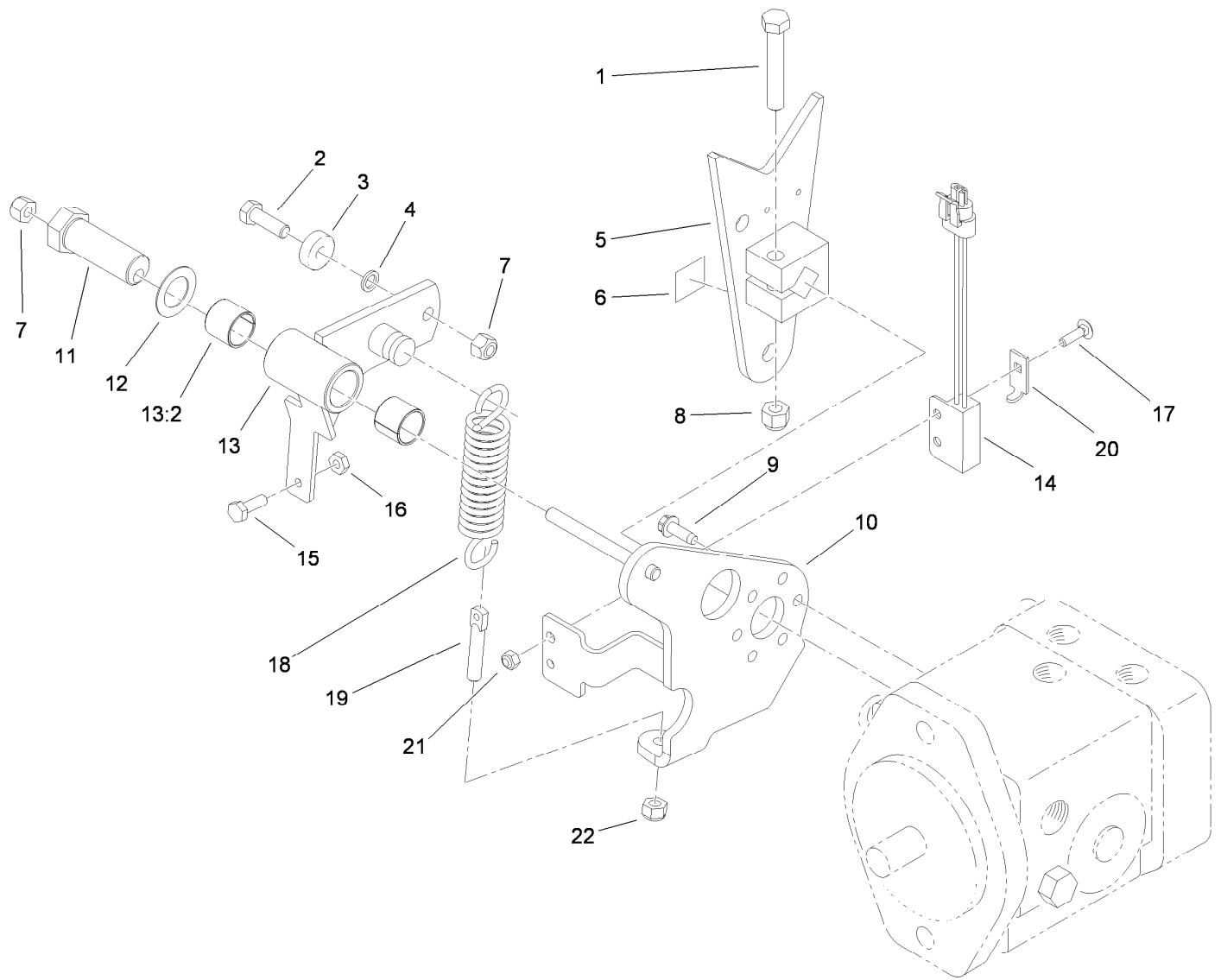
Ref.	Part Number	Qty.	Description	Ref.	Part Number	Qty.	Description
33	2710-11	2	Link-Chain	40	112-7641-03	1	Weight-Wheel
34	92-5039	1	Chain-Steering	41	112-7661	2	Nut-Hex
35	18-6380	2	Pin-Adjustment, Steering	42		1	Front Axle ASM ●
36	3296-4	2	Nut-Lock	42:1	112-7673	1	Axle Shaft ASM
37	3296-19	2	Nut-Hex	42:2	10-6830	4	Stud-Type, Drive
38	87-7270	2	Washer-Thrust	42:3	108-7662	2	Screw-Lug
39	112-7659	2	Stud				

● Not serviced separately



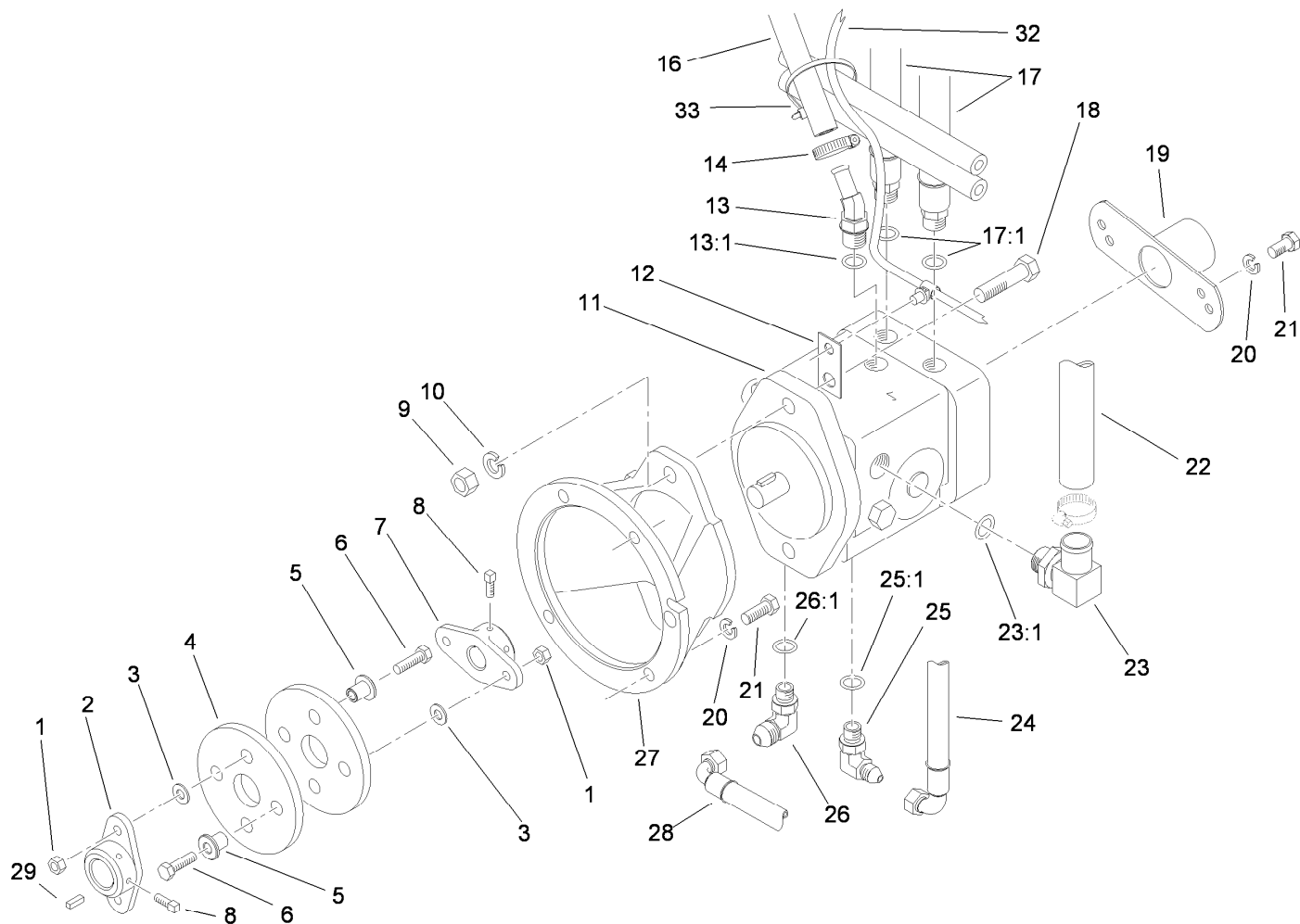
Traction Pedal Assembly

Ref.	Part Number	Qty.	Description
1	322-14	1	Screw-HH
2	3256-23	1	Washer-Flat
3	256-219	2	Bushing
4	85-8960	1	Spacer
5	74-9110	1	Pad-Pedal, Reverse
6	74-9100	1	Pad-Pedal, Forward
7	92-2343-01	1	Pedal ASM
8	3296-29	1	Nut-Lock, NI
9	3218-5	2	Nut-Jam
10	3296-39	1	Nut-Lock, NI
11	3256-24	2	Washer-Flat
12	92-2344	1	Trunnion
13	95-0584	1	Rod-Control
14	3256-25	1	Washer-Flat
15	3272-16	1	Pin-Cotter



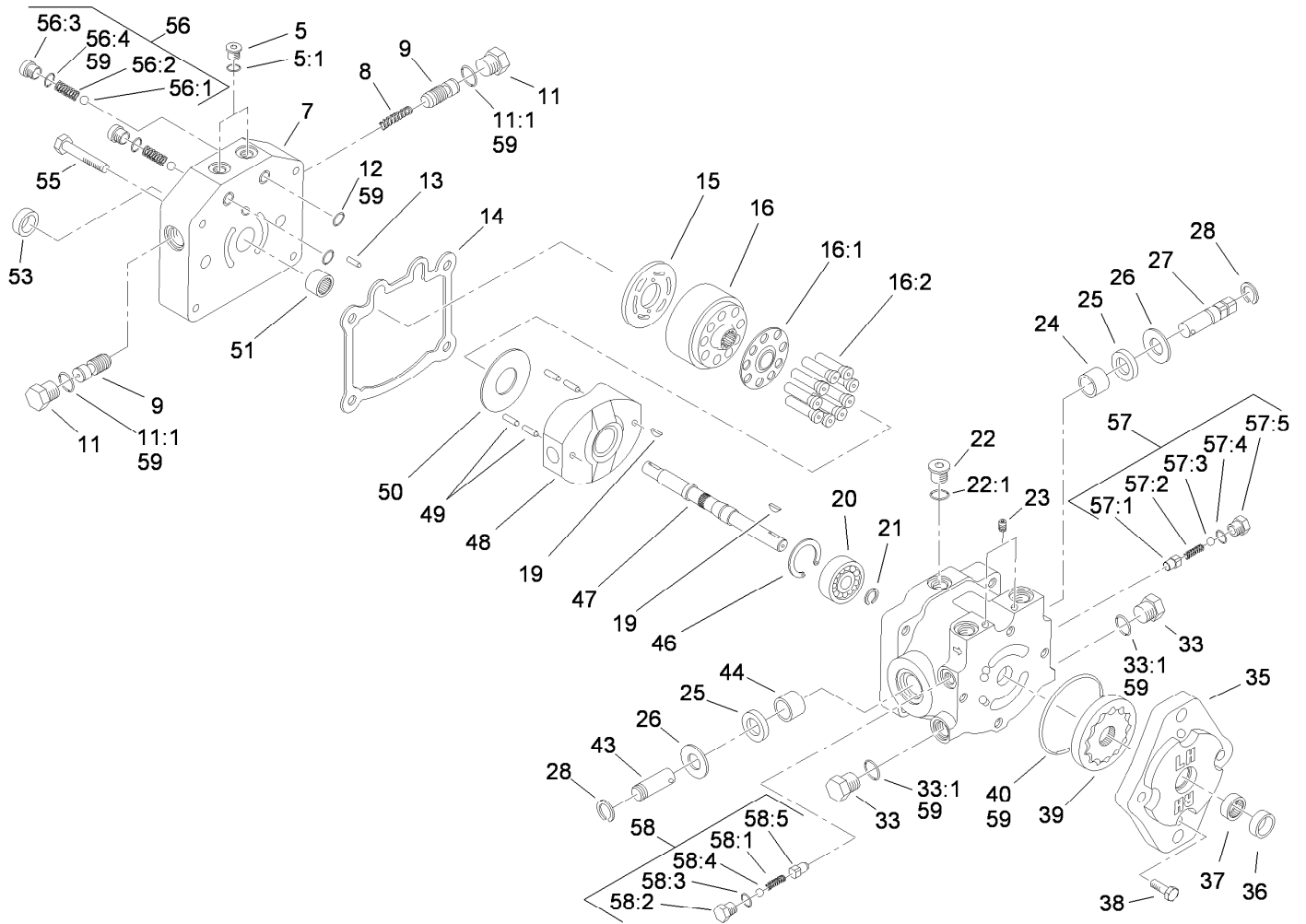
Pump Control Lever Assembly

<i>Ref.</i>	<i>Part Number</i>	<i>Qty.</i>	<i>Description</i>	<i>Ref.</i>	<i>Part Number</i>	<i>Qty.</i>	<i>Description</i>
1	323-11	1	Screw-HH	13	108-5493	1	Arm ASM
2	322-5	1	Screw-HH	13:2	94-9609	2	Bushing-Straight
3	251-307	1	Bearing-Ball	14	105-0023	1	Switch-Proximity
4	75-5470	1	Spacer-Bearing	15	321-4	1	Screw-HH
5	85-8300-03	1	Pump Lever ASM	16	3218-1	1	Nut-Jam
6	93-9051	1	Decal-Bolt, Eccentric	17	3229-20	1	Screw-CARR
7	3296-29	2	Nut-Lock, NI	18	85-9030	1	Spring-Extension
8	3296-39	1	Nut-Lock, NI	19	18-6380	1	Pin-Adjustment, Steering
9	49-2040	3	Screw-HWHTF	20	100-4872	1	Plate-Switch, Neutral
10	108-5490-03	1	Pump Plate ASM	21	3296-2	1	Nut-Lock, NI
11	76-8640	1	Stud-Traction	22	3296-4	1	Nut-Lock
12	3-6498	1	Washer-Thrust				



Hydraulic Pump Installation Assembly

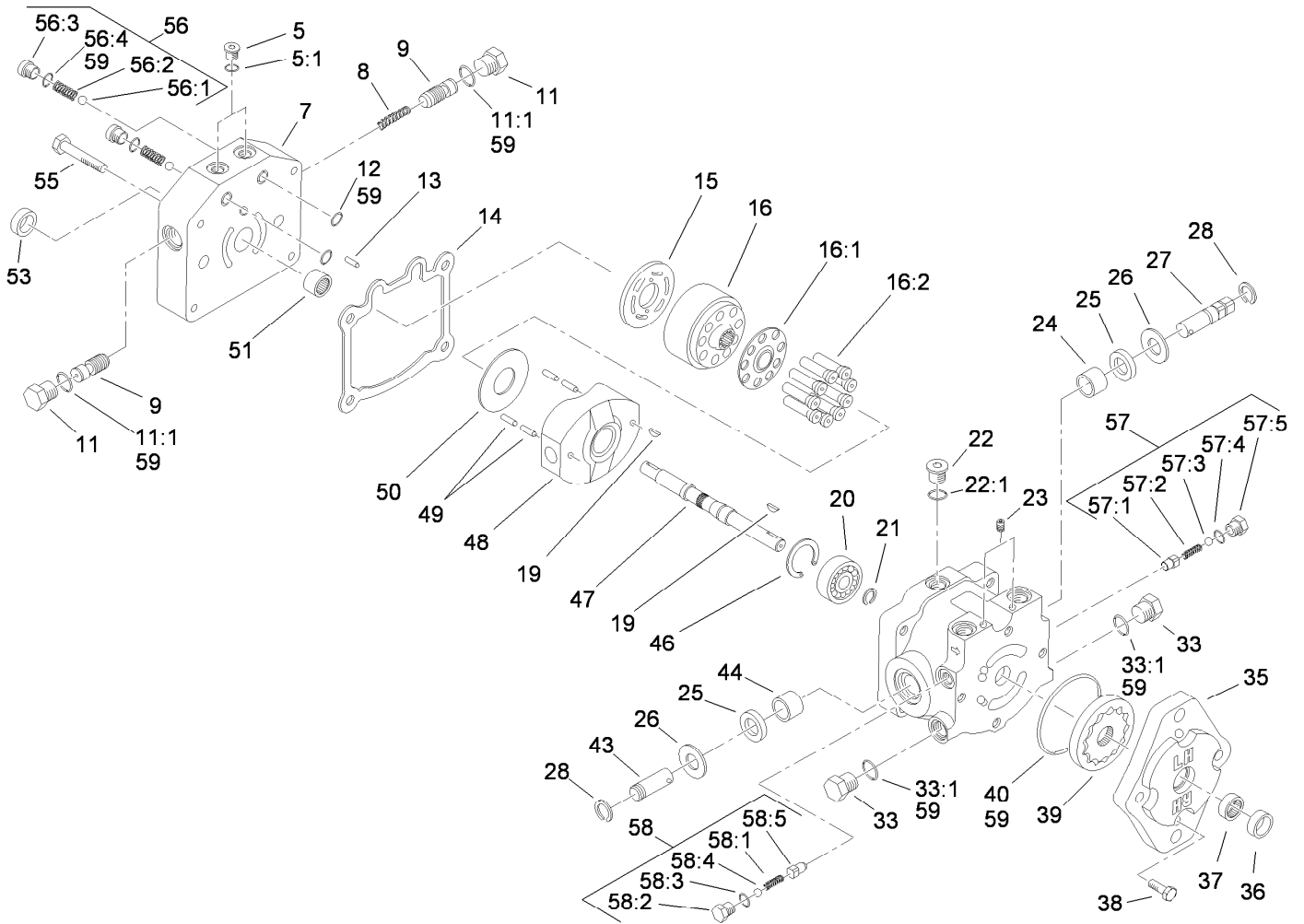
<i>Ref.</i>	<i>Part Number</i>	<i>Qty.</i>	<i>Description</i>	<i>Ref.</i>	<i>Part Number</i>	<i>Qty.</i>	<i>Description</i>
1	3296-29	4	Nut-Lock, NI	18	325-7	2	Screw-HH
2	110-5236	1	Hub-Engine	19	95-0632-03	1	Cover ASM
3	3256-23	4	Washer-Flat	20	3253-5	6	Washer-Lock
4	80-8650	2	Coupling-Drive	21	323-6	6	Screw-HH
5	71-4411	4	Spacer	22	95-0555	1	Hose-Suction
6	322-7	4	Screw-HH	23	87-8170	1	Fitting
7	110-9695	1	Hub-Pump	23:1	237-80	1	O-Ring
8	3241-5	4	Screw-Set	24	95-0592	1	Hose ASM
9	3217-9	2	Nut-HH	25	353-374	1	Elbow-90 DEG
10	3253-7	2	Washer-Lock	25:1	237-42	1	O-Ring
11	114-0613	1	Var HYD Piston Pump ASM	26	353-511	1	Fitting-HYD, 90 DEG
12	112-7639	1	Stand Off-Wire	26:1	237-42	1	O-Ring
13	354-126	1	Fitting-HYD, 45 DEG	27	95-0631-03	1	Mount-Pump
13:1	237-79	1	O-Ring	28	95-0591	1	Hose-HYD
14	2412-36	1	Clamp-Hose	29	13-2840	1	Key-Square
16	98-8153	1	Hose-Return	32	110-7384	1	Harness-Wire
17	95-0595	2	Hose-HYD	33	3290-379	6	Tie-Cable
17:1	237-79	1	O-Ring				



Variable Hydraulic Piston Pump Assembly No. 114-0613

Ref.	Part Number	Qty.	Description	Ref.	Part Number	Qty.	Description
5	92-8776	2	Plug-HSH	22	353-988	1	Plug-Hex
5:1	92-8777	1	O-Ring	22:1	237-79	1	O-Ring
7	112-7656	1	Cap-End	23	285-17	2	Plug-Pipe
8	25-2610	1	Spring-Valve	24	88-8190	1	Bearing-Journal
9	95-5814	2	Valve-Acceleration	25	25-3210	2	Seal-Lip
11	28-3440	2	Plug-Threaded	26	25-2510	2	Washer-Flat
11:1	75-0240	1	O-Ring	27	88-8180	1	Shaft-Trunnion
12	112-7652	2	O-Ring	28	32151-46	2	Ring-Retaining
13	25-2430	1	Pin-Dowel	33	88-8210	2	Plug
14	25-2400	1	Gasket	33:1	237-80	1	O-Ring
15	95-5811	1	Plate-Valve	35	114-0611	1	Housing-Pump, Charge
16	48-1800	1	Cylinder Block Kit	36	67-8060	1	Seal-Lip
16:1		1	Retainer-Slipper ●	37	67-8050	1	Bearing-Needle
16:2		9	Piston ASM ●	38	322-4	4	Screw-HH
19	3257-32	2	Key-Woodruff	39	95-5812	1	Gerotor ASM
20	95-5809	1	Bearing-Ball	40	237-95	1	O-Ring
21	94-3996	1	Ring-Retaining	43	25-2500	1	Shaft-Trunnion

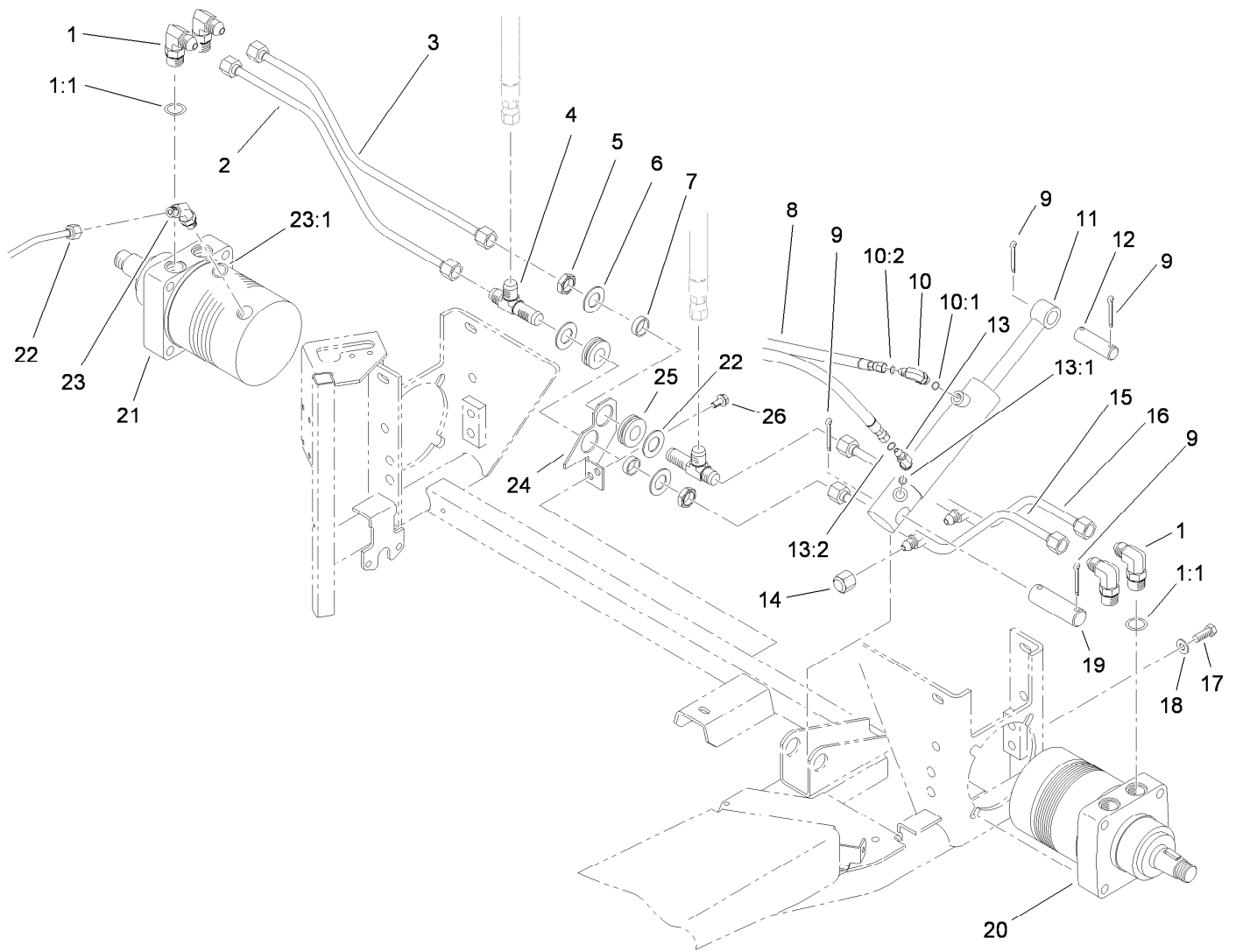
● Not serviced separately



Variable Hydraulic Piston Pump Assembly No. 114-0613 (continued)

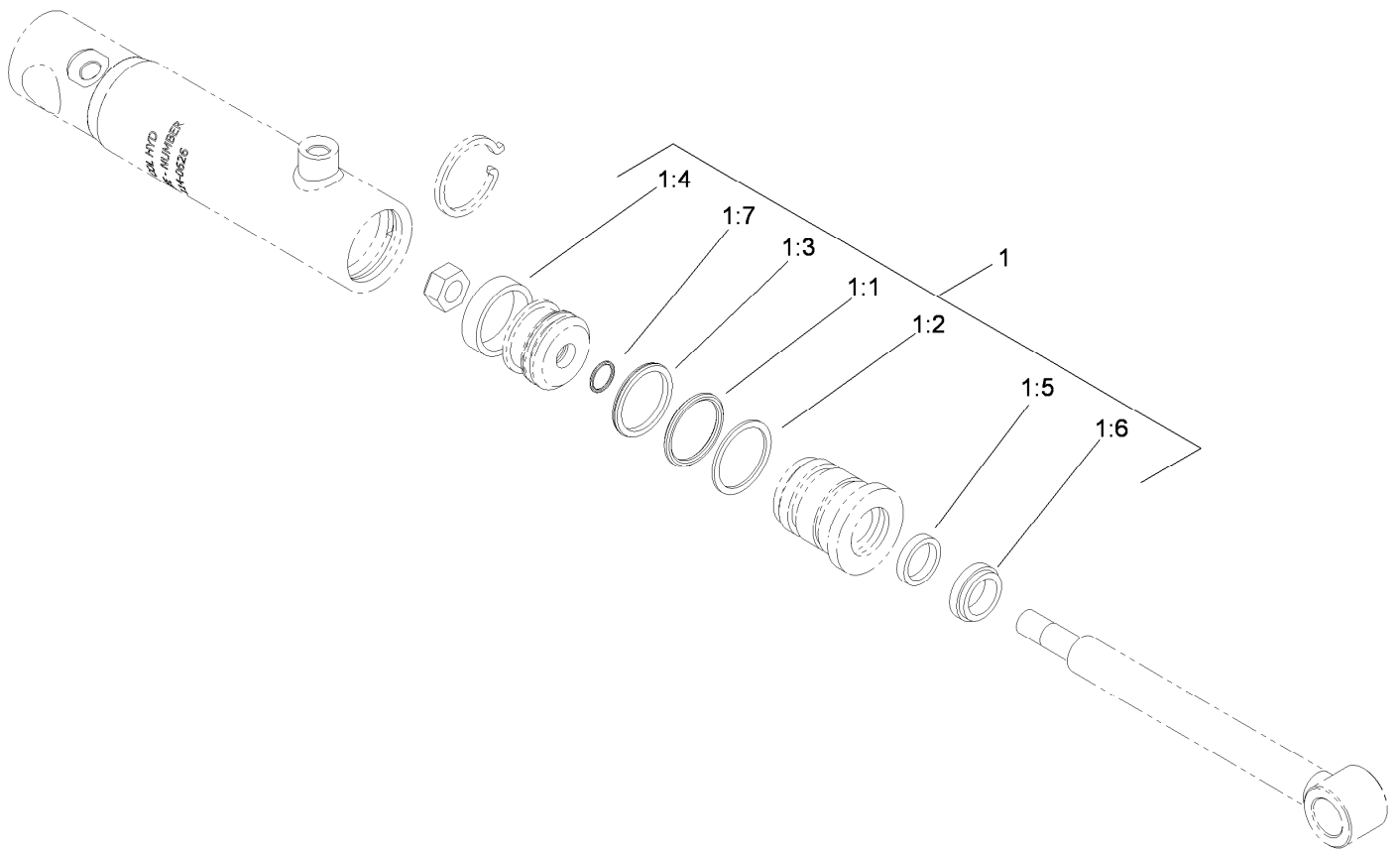
<i>Ref.</i>	<i>Part Number</i>	<i>Qty.</i>	<i>Description</i>	<i>Ref.</i>	<i>Part Number</i>	<i>Qty.</i>	<i>Description</i>
44	252-82	1	Bearing-Needle	57	49-8520	1	Implement Relief Kit
46	32151-75	1	Ring-Retaining	57:1	83-7260	1	Cone-Relief, Charge
47	95-5810	1	Shaft	57:2	25-2570	1	Spring-Valve
48	25-2450	1	Plate-Swash, Variable	57:3	25-2470	1	Pack-Shim
49	32121-91	4	Pin-Spring	57:4	237-86	1	O-Ring
50	25-2380	1	Plate-Thrust	57:5	25-2460	1	Plug-HH
51	46-8400	1	Bearing-Shaft	58	49-8510	1	Valve Kit
53	88-8230	1	Seal-Lip	58:1	25-2480	1	Spring-Valve
55	323-45	4	Screw-HH	58:2	25-2460	1	Plug-HH
56	99-5689	1	Check Valve Kit	58:3	237-86	1	O-Ring
56:1	25-2490	1	Ball	58:4	25-2470	1	Pack-Shim
56:2	25-2640	1	Spring-Valve	58:5	83-7260	1	Cone-Relief, Charge
56:3	25-2650	1	Plug-Valve, Check	59	114-0618	1	Kit-Seal
56:4	237-86	1	O-Ring				

● Not serviced separately



Rear Wheel Drive Assembly

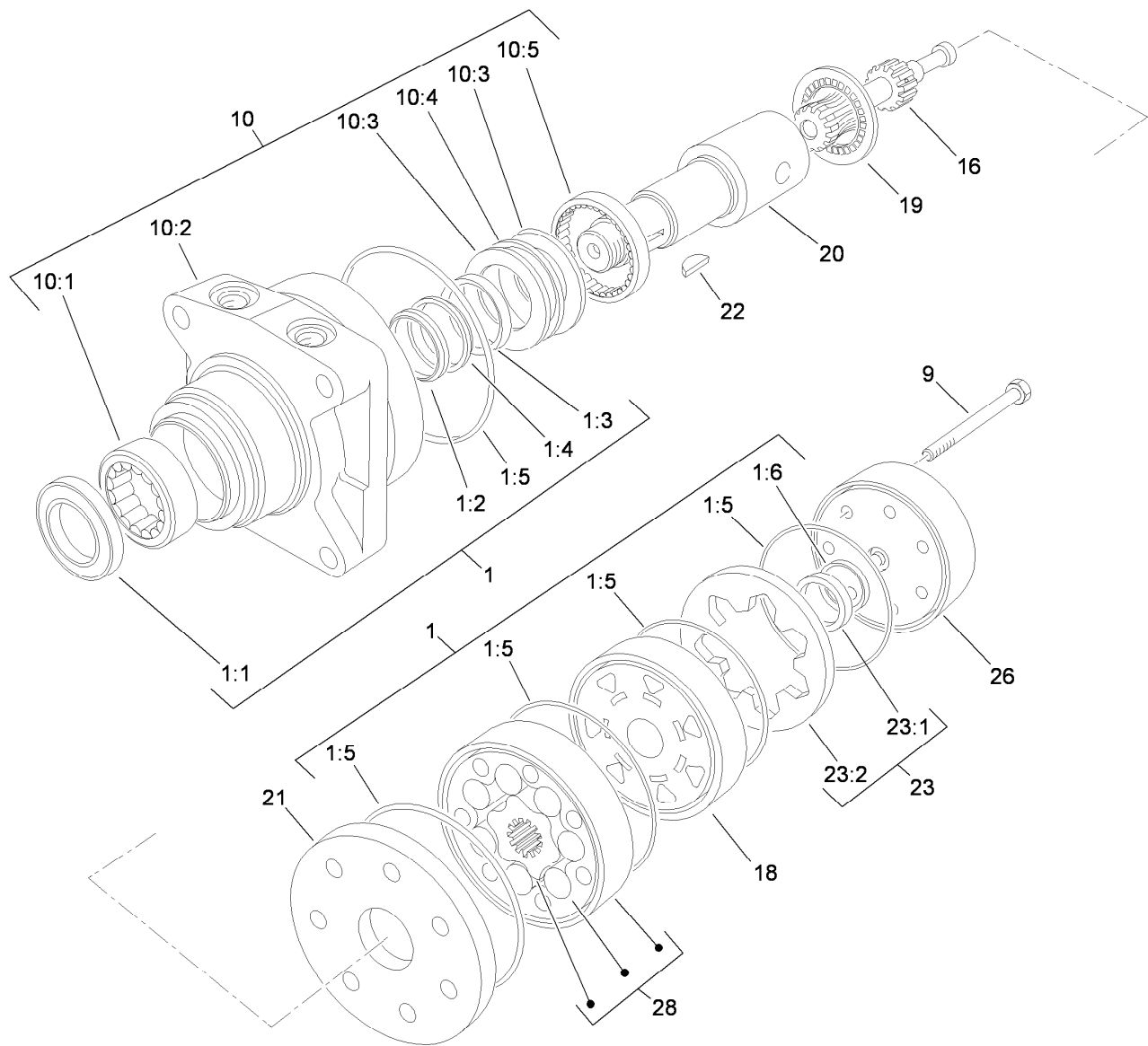
Ref.	Part Number	Qty.	Description	Ref.	Part Number	Qty.	Description
1	353-426	4	Fitting-90 DEG	13:1	237-78	1	O-Ring
1:1	237-80	1	O-Ring	13:2	237-21	1	O-Ring
2	95-0564	1	Tube-RH, Front	14	95-0594	2	Fitting-Cap
3	95-0559	1	Tube-RH, Rear	15	95-0560	1	Tube-LH, Front
4	95-0577	2	Fitting-Bulkhead	16	95-0567	1	Tube-LH, Rear
5	95-0642	2	Locknut-Bulkhead	17	325-5	4	Screw-HH
6	69-8930	4	Washer	18	3256-26	4	Washer-Flat
7	69-8960	2	Spacer	19	18-7160	1	Pin-Cylinder
8	75-6200	2	Hose	20	75-9831	1	HYD Motor ASM
9	3272-23	4	Pin-Cotter	21	75-9840	1	HYD Motor ASM
10	340-132	1	Fitting-HYD, 90 DEG	22	95-0575	1	Tube-Valve, Shuttle
10:1	237-78	1	O-Ring	23	353-212	1	Fitting-HYD, 45 DEG
10:2	237-21	1	O-Ring	23:1	237-42	1	O-Ring
11	114-0626	1	HYD Cylinder ASM	24	95-0568-01	1	Bracket-Bulkhead
12	18-7310	1	Pin-Cylinder	25	240-5	2	Grommet-Rubber
13	340-103	1	Fitting-HYD, 45 DEG	26	32144-14	2	Screw-HWHTF



Hydraulic Cylinder Assembly No. 114-0626

<i>Ref.</i>	<i>Part Number</i>	<i>Qty.</i>	<i>Description</i>
1	115-4129	1	Repair Kit
1:1		1	O-Ring ●
1:2		1	Ring-Backup ●
1:3		1	Seal-Bp ●
1:4		1	Ring-Wear ●
1:5		1	Seal-Bs ●
1:6		1	Seal-Dust ●
1:7		1	O-Ring ●

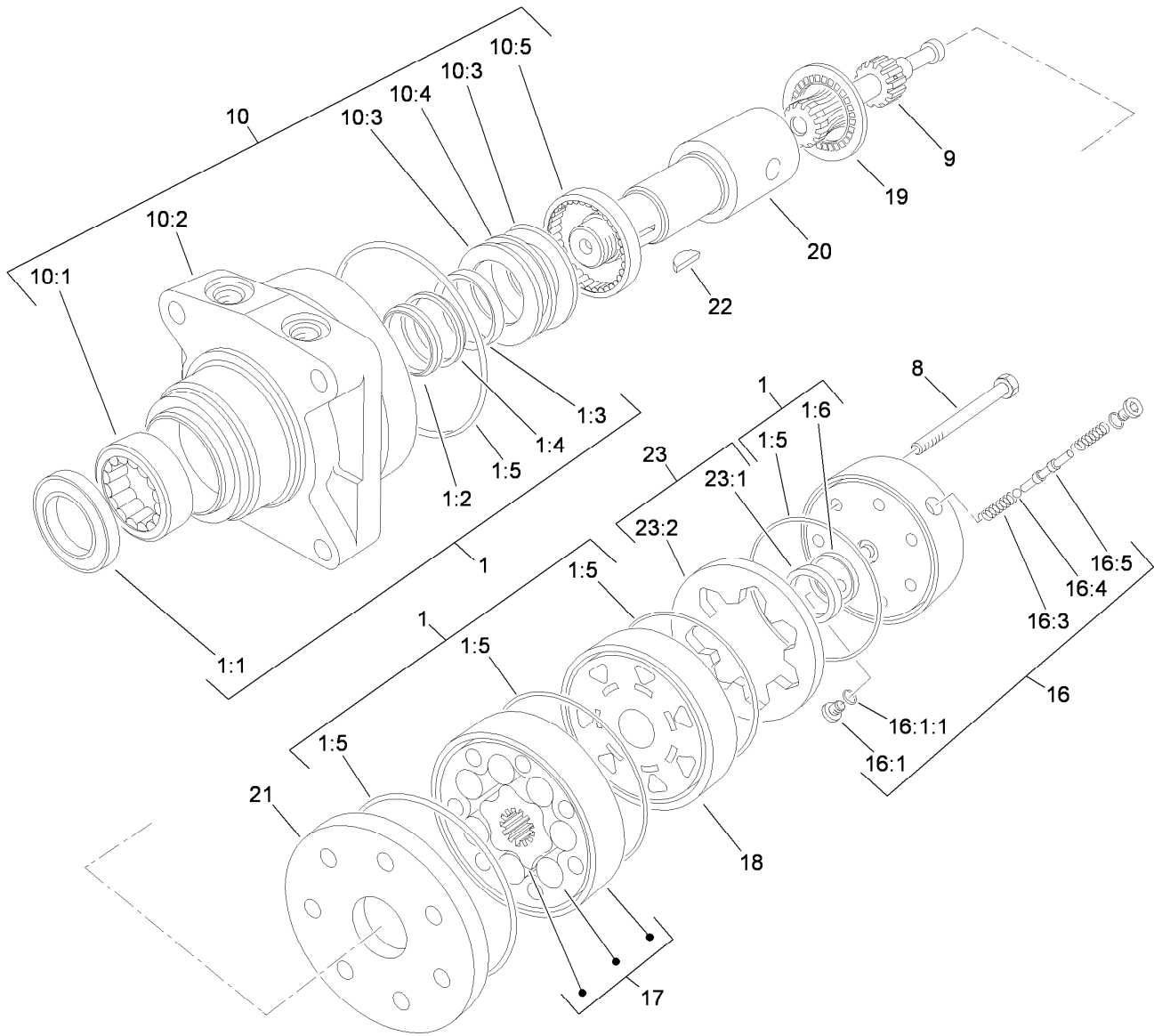
● Not serviced separately



Hydraulic Motor Assembly No. 75-9831

Ref.	Part Number	Qty.	Description	Ref.	Part Number	Qty.	Description
1	94-8178	1	Seal Kit	10:5		1	Bearing ●
1:1		1	Seal-Dirt And Water ●	16	76-0820	1	Line-Drive
1:2		1	Backup-Ring ●	18	76-0840	1	Manifold
1:3		1	Seal-Shaft ●	19	76-0850	1	Bearing-Thrust
1:4		1	Washer-Backup ●	20	76-0860	1	Shaft-Coupling
1:5		5	Seal-Square, Ring (Inner) ●	21	76-0870	1	Plate-Wear
1:6		1	Seal-Commutator ●	22	3257-42	1	Key-Woodruff
9	76-1020	7	Screw-Cap, HH	23	76-0880	1	Commutator ASM
10	76-0810	1	Housing ASM	23:1		1	Commutator ●
10:1		1	Bearing ●	23:2		1	Ring-Commutator ●
10:2		1	Housing ●	26	76-0940	1	End Cover ASM
10:3		2	Washer-Thrust ●	28	76-0830	1	Rotor Set
10:4		1	Bearing-Thrust ●				

● Not serviced separately

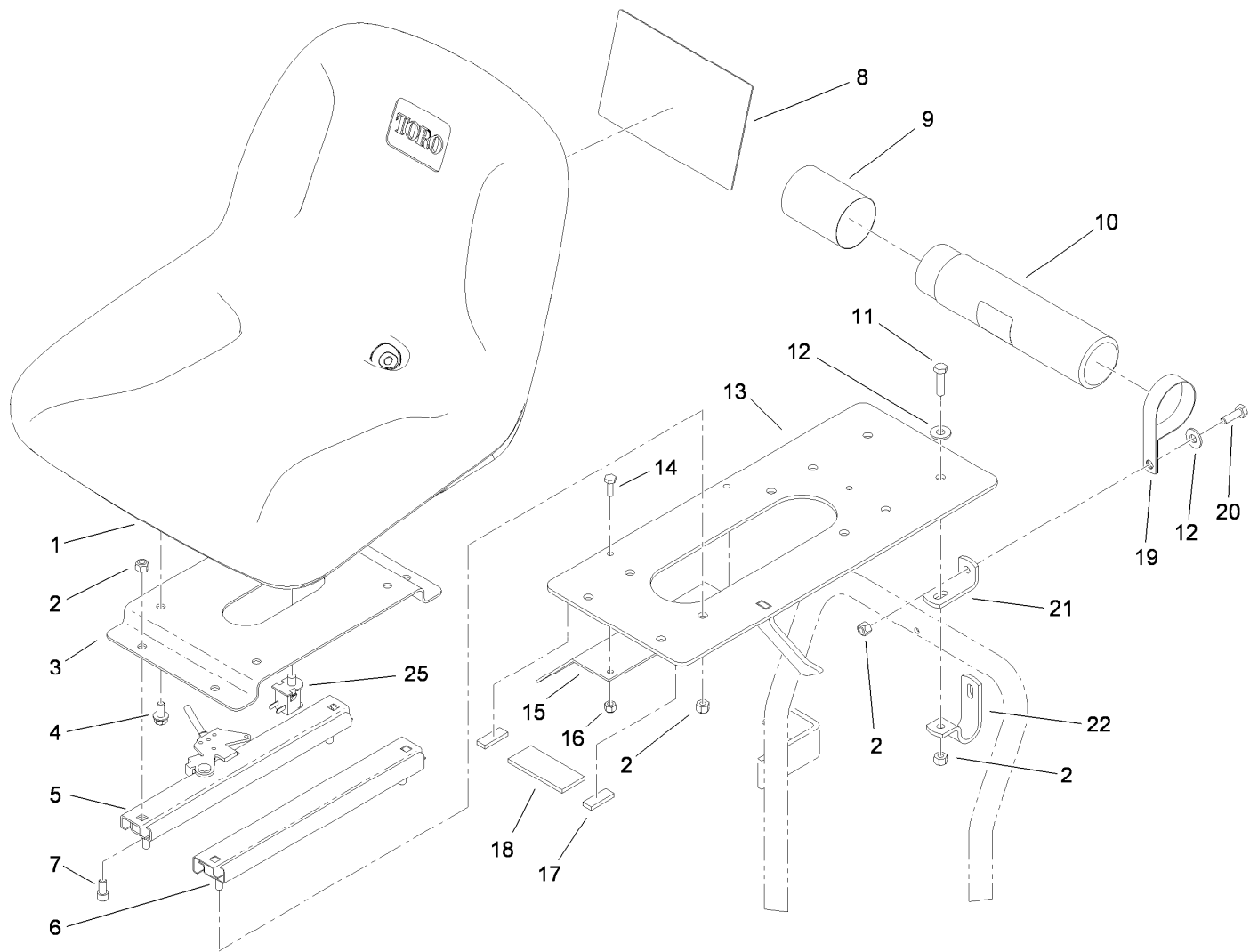


Hydraulic Motor Assembly No. 75-9840

Ref.	Part Number	Qty.	Description
1	94-8178	1	Seal Kit
1:1		1	Seal-Dirt And Water ●
1:2		1	Backup-Ring ●
1:3		1	Seal-Shaft ●
1:4		1	Washer-Backup ●
1:5		5	Seal-Square, Ring (Inner) ●
1:6		1	Seal-Commutator ●
8	76-1040	7	Screw-Cap, HH
9	76-0820	1	Line-Drive
10	76-0810	1	Housing ASM
10:1		1	Bearing ●
10:2		1	Housing ●
10:3		2	Washer-Thrust ●
10:4		1	Bearing-Thrust ●
10:5		1	Bearing ●

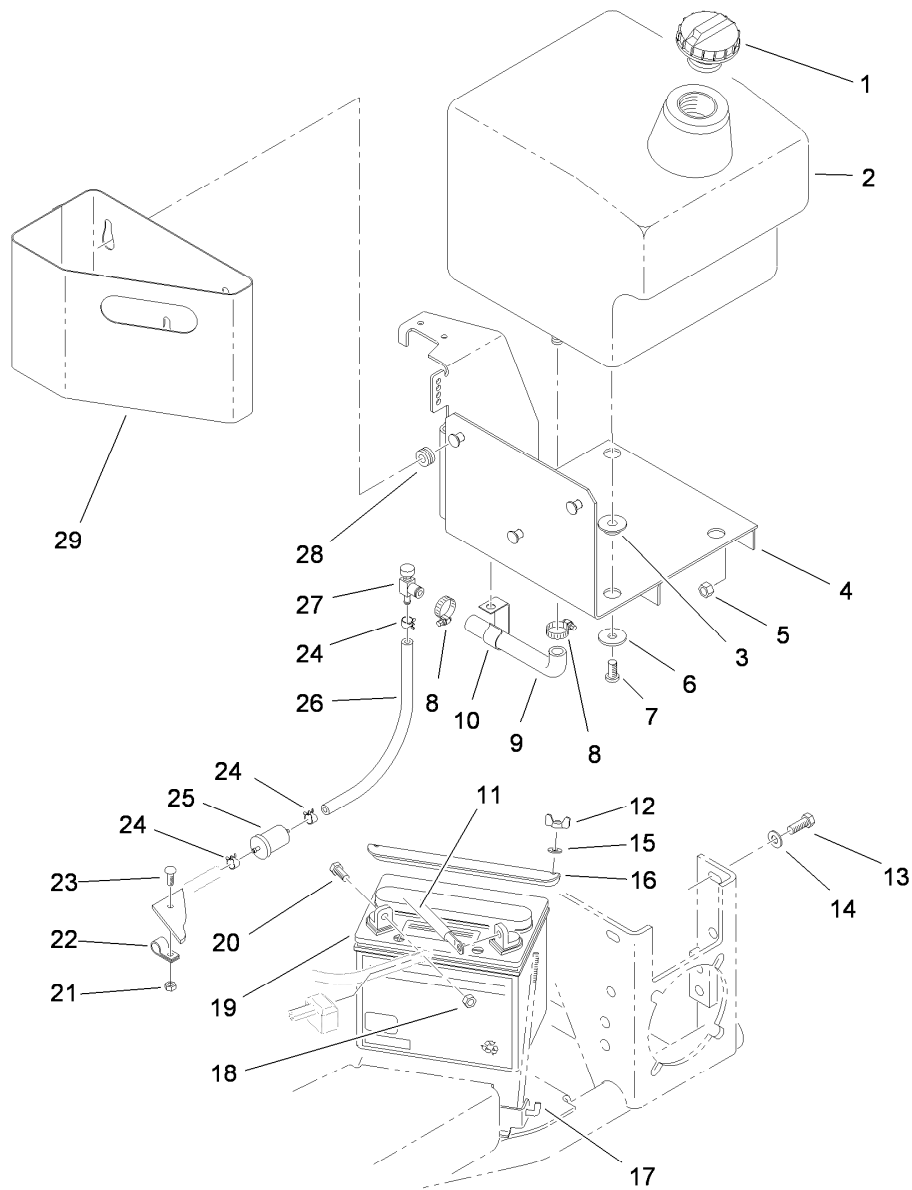
Ref.	Part Number	Qty.	Description
16	76-0890	1	End Cover ASM
16:1	353-990	2	Plug
16:1:1	237-78	1	O-Ring
16:3		2	Spring ●
16:4		1	Ball ●
16:5		1	Valve-Shuttle ●
17	76-0830	1	Rotor Set
18	76-0840	1	Manifold
19	76-0850	1	Bearing-Thrust
20	76-0860	1	Shaft-Coupling
21	76-0870	1	Plate-Wear
22	3257-42	1	Key-Woodruff
23	76-0880	1	Commutator ASM
23:1		1	Commutator ●
23:2		1	Ring-Commutator ●

● Not serviced separately



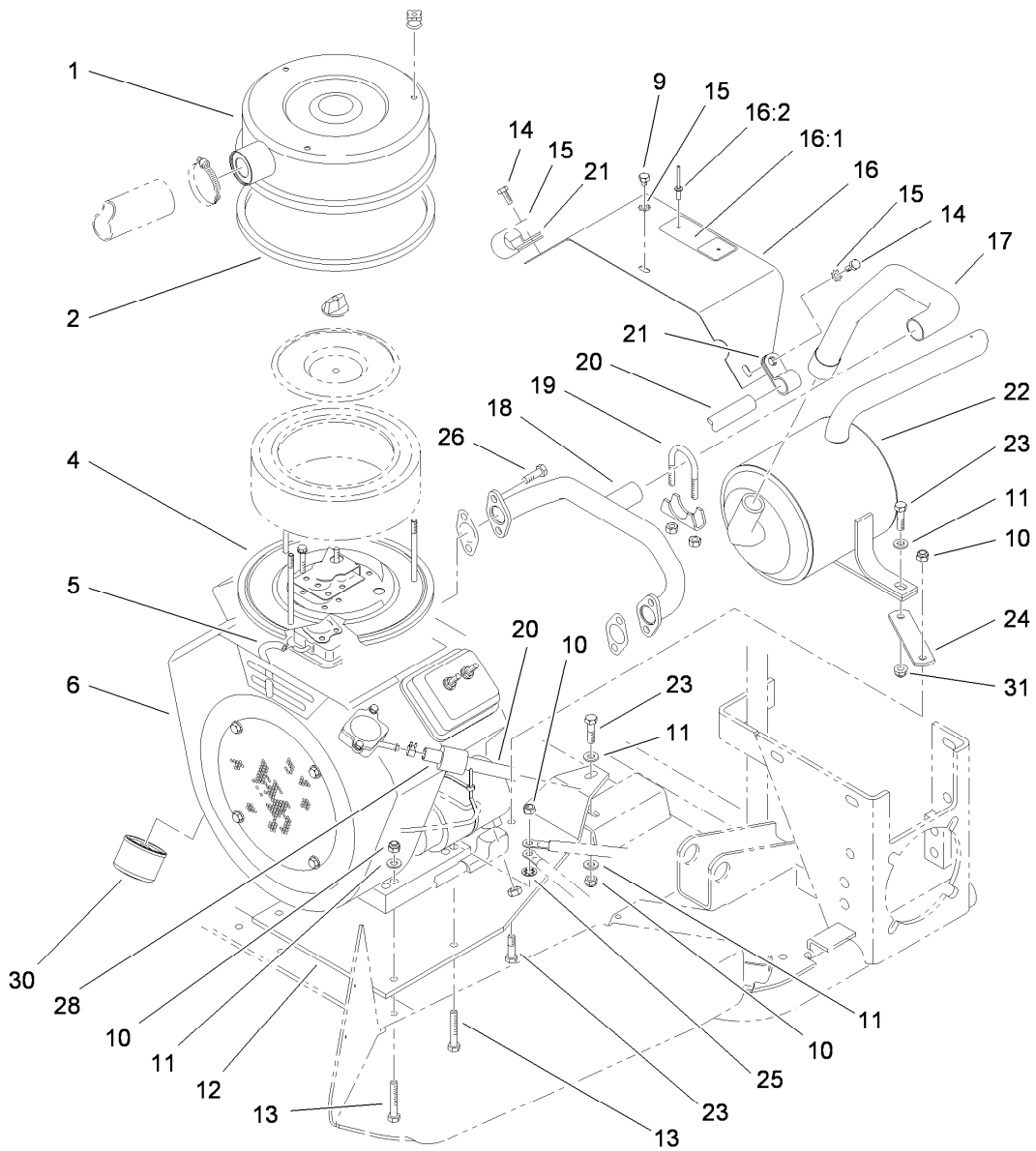
Seat Assembly

<i>Ref.</i>	<i>Part Number</i>	<i>Qty.</i>	<i>Description</i>	<i>Ref.</i>	<i>Part Number</i>	<i>Qty.</i>	<i>Description</i>
1	108-6878	1	Seat	13	112-7682-03	1	Seat Plate ASM
2	3296-29	12	Nut-Lock, NI	14	321-4	2	Screw-HH
3	110-7374-03	1	Mount-Seat	15	95-5840-03	1	Shield-Base, Seat
4	3234-14	4	Screw-HHF	16	3296-42	2	Nut-Lock, NI
5	51-0790	1	Adjuster-Seat, LH	17	74-0340	2	Cushion-Rubber
6	51-0780	1	Slider-Seat	18	74-0342	1	Cushion-Rubber
7	3274-12	4	Screw-HSH	19	2412-133	2	R-Clamp
8	114-4318	1	Decal-Reference, Quick	20	322-5	2	Screw-HH
9	104-7048	1	Cap-Housing	21	92-8973	2	Angle
10	104-7050	1	Tube-Manual	22	92-8972	2	Clamp-Seat
11	322-6	2	Screw-HH	25	82-2190	1	Switch-Bail
12	3256-3	4	Washer-Flat				



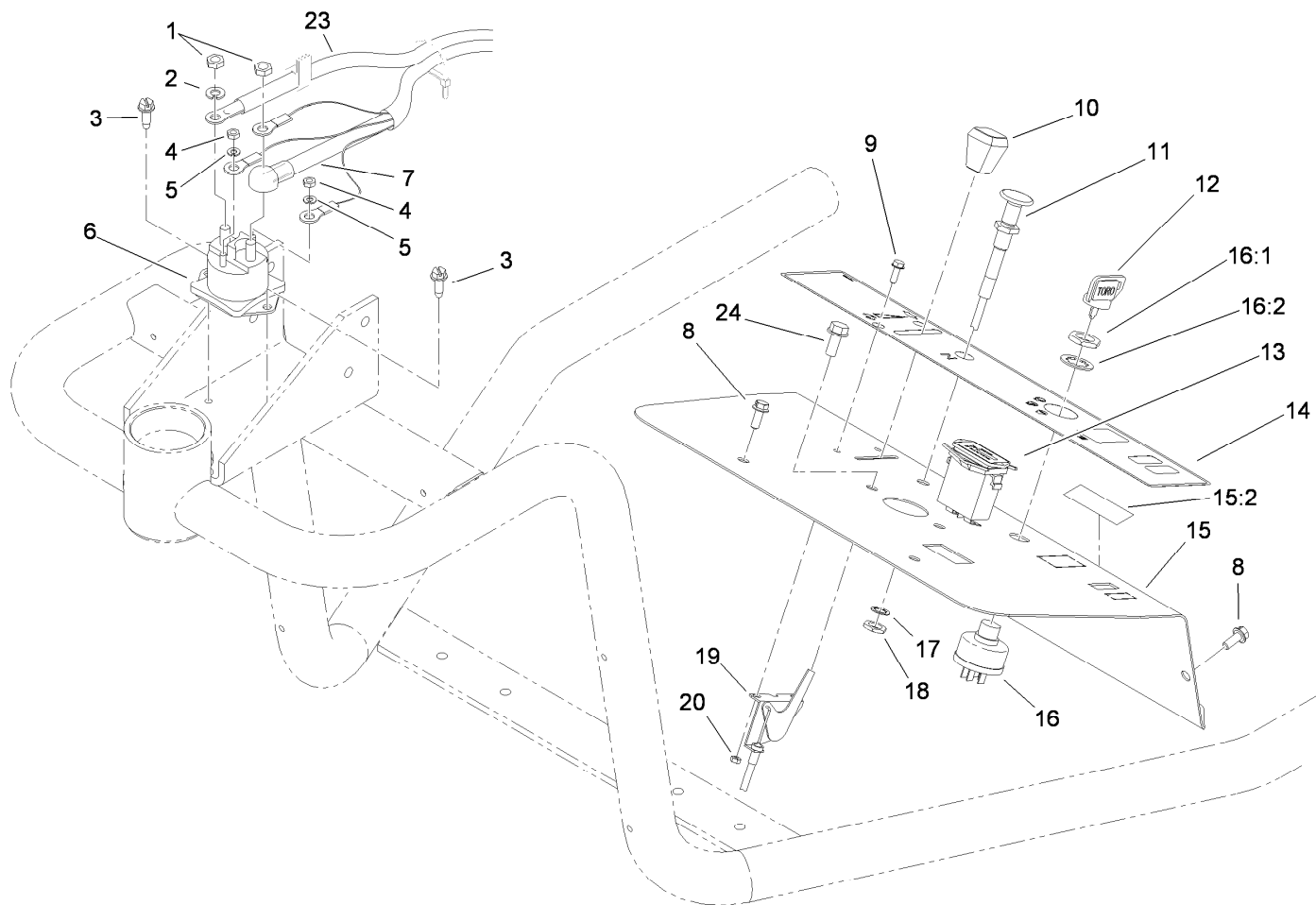
Fuel Tank Assembly

<i>Ref.</i>	<i>Part Number</i>	<i>Qty.</i>	<i>Description</i>	<i>Ref.</i>	<i>Part Number</i>	<i>Qty.</i>	<i>Description</i>
1	115-5304	1	Cap-Fuel	16	92-5018-03	1	Clamp-Battery
2	92-7186	1	Tank-Fuel	17	100-6435	2	Post-Battery
3	240-11	4	Bushing-Flange	18	3296-29	2	Nut-Lock, NI
4	95-0576-03	1	Base-Tank, Fuel	19	104-8162	1	Battery
5	3296-39	3	Nut-Lock, NI	20	322-3	2	Screw-HH
6	63-8410	4	Washer	21	3296-42	1	Nut-Lock, NI
7	3250-36	4	Screw-PPH	22	2412-73	1	Clamp-R
8	2412-36	2	Clamp-Hose	23	3274-69	1	Screw-HSBH
9	110-8151	1	Hose-Fuel, Formed	24	2412-98	4	Clamp
10	92-7160	1	Clip	25	94-2690	1	Filter-Fuel
11	110-8843	1	Cable-Battery, Negative	26	109-0294	1	Hose-Fuel
12	32103-12	2	Nut-Wing	27	83-1390	1	Valve-Shut-Off, Fuel
13	323-7	3	Screw-HH	28	240-9	3	Grommet
14	3256-24	3	Washer-Flat	29	86-7640-01	1	Box-Litter
15	3256-22	2	Washer-Flat				



Engine Installation Assembly

<i>Ref.</i>	<i>Part Number</i>	<i>Qty.</i>	<i>Description</i>	<i>Ref.</i>	<i>Part Number</i>	<i>Qty.</i>	<i>Description</i>
1	114-0607-03	1	Air Cleaner Cover ASM	16:2	3269-32	2	Rivet-Pop
2	85-8360	1	Gasket-Ring	17	95-0551	1	Tube-Exhaust
4	85-8430-03	1	Base-Cleaner, Air	18	95-0550	1	Manifold-Exhaust
5	75-4705	1	Hose-Fuel	19	95-0586	2	Clamp ASM
6	119-2463	1	Engine-Briggs & Stratton, 305447-0265-G2	20	109-0302	1	Hose-Fuel
9	33113-008	1	Screw-HH	21	2412-73	2	Clamp-R
10	3296-29	6	Nut-Lock, NI	22	95-0552	1	Muffler
11	3256-23	6	Washer-Flat	23	322-5	3	Screw-HH
12	95-0556-03	1	Base-Engine	24	114-0608	1	Bracket-Muffler
13	322-10	4	Screw-HH	25	3255-8	1	Washer-Lock
14	33113-012	2	Screw-HH	26	94-5300	4	Screw-HHF
15	3255-7	3	Washer-Lock/EXT	28	38-3400	1	Guard-Rubber
16	105-8523	1	Muffler Shield ASM	30	107-7817	1	Filter-Oil
16:1	95-0645	1	Plate-Surface, Hot	31	104-8300	1	Nut-Flange, NI

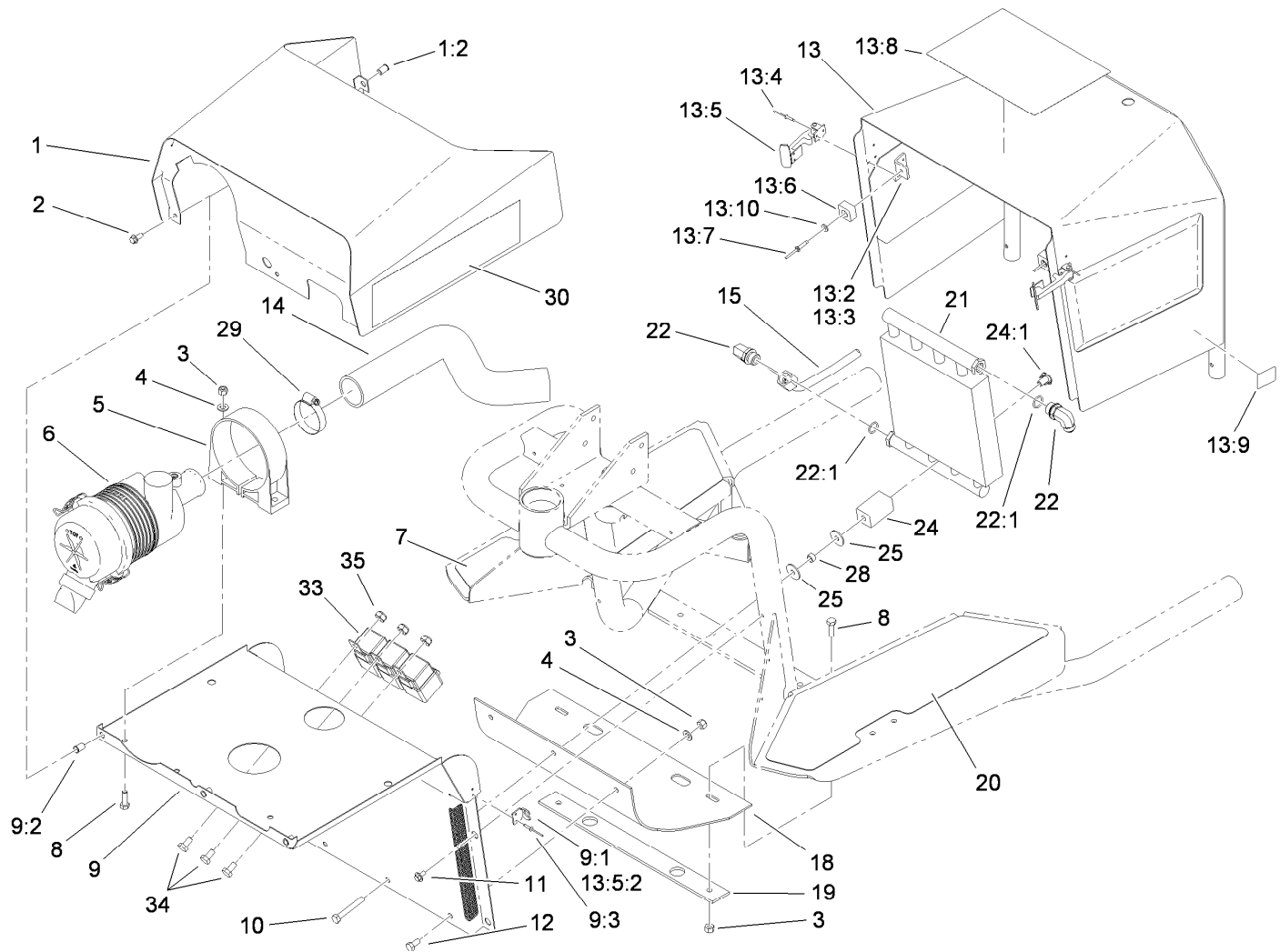


Dash Panel Assembly

Ref.	Part Number	Qty.	Description
1	3218-13	2	Nut-Jam, Brass
2	3253-4	2	Washer-Lock
3	32104-95	2	Screw-HWH
4	3219-14	2	Nut-Hex
5	3253-17	2	Washer-Lock
6	28-4210	1	Solenoid
7	110-8844	1	Cable-Battery, Positive
8	3234-33	4	Screw-HHF
9	32105-2	2	Screw-SHWH
10	66-0120	1	Knob
11	112-7689	1	Control-Choke
12	63-8360	2	Key-Ignition
13	1-513374	1	Meter-Hour

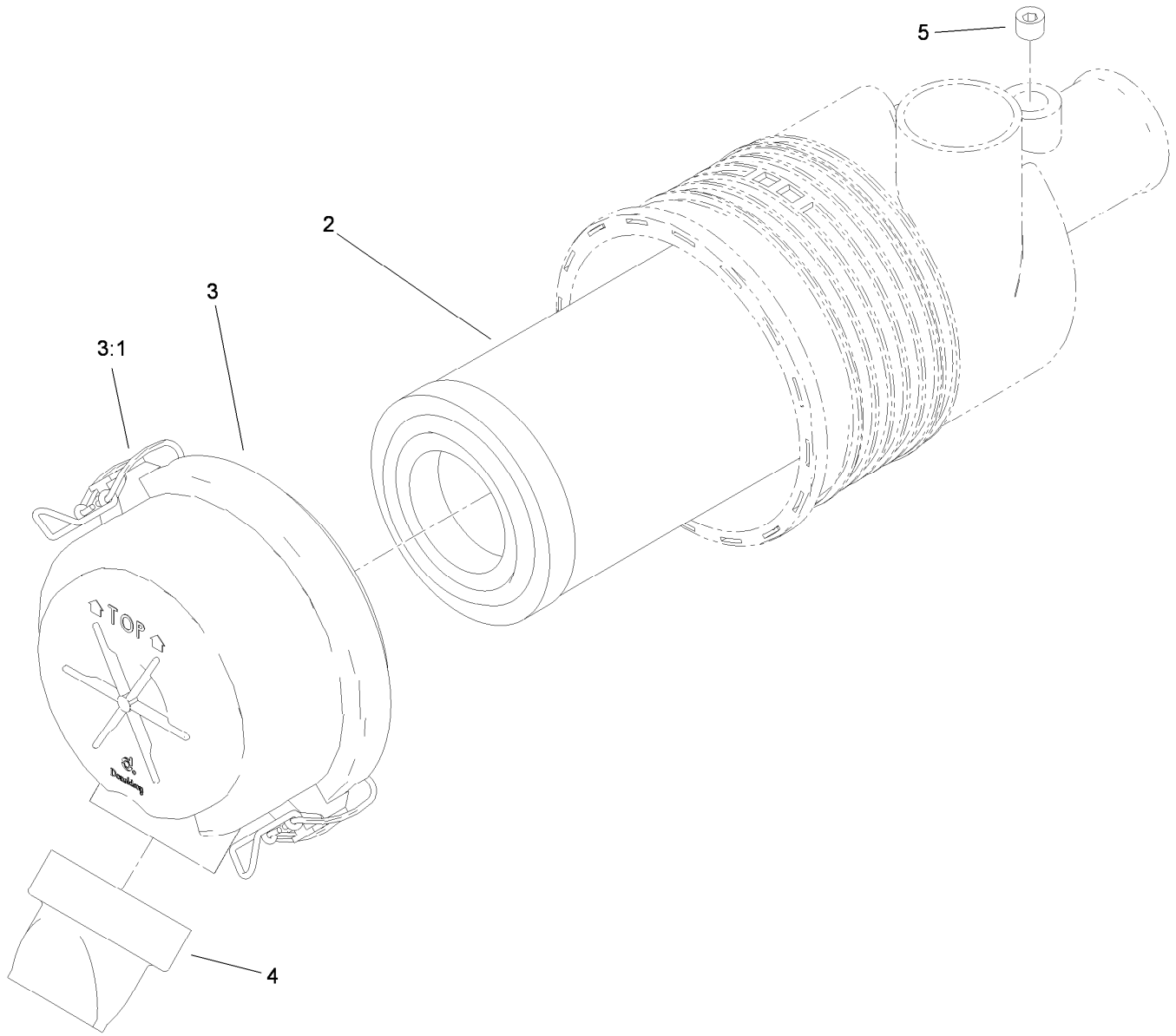
Ref.	Part Number	Qty.	Description
14	112-7629	1	Decal-Dash
15	110-7396	1	Dash Panel ASM
15:2	93-9052	1	Decal-Danger
16	83-0020	1	Switch-Ignition
16:1	218-461	1	Nut-HH
16:2	3254-5	1	Washer-Tooth, Internal
17	3254-6	1	Washer-Lock, Internal
18	3219-3	1	Nut-Hex
19	112-7688	1	Control-Throttle
20	3296-12	2	Nut-Lock, NI
23	95-5825	1	Wire ASM
23:1	83-2430	1	Boot-Terminal ●
24	32144-14	2	Screw-HWHTF

● Not illustrated



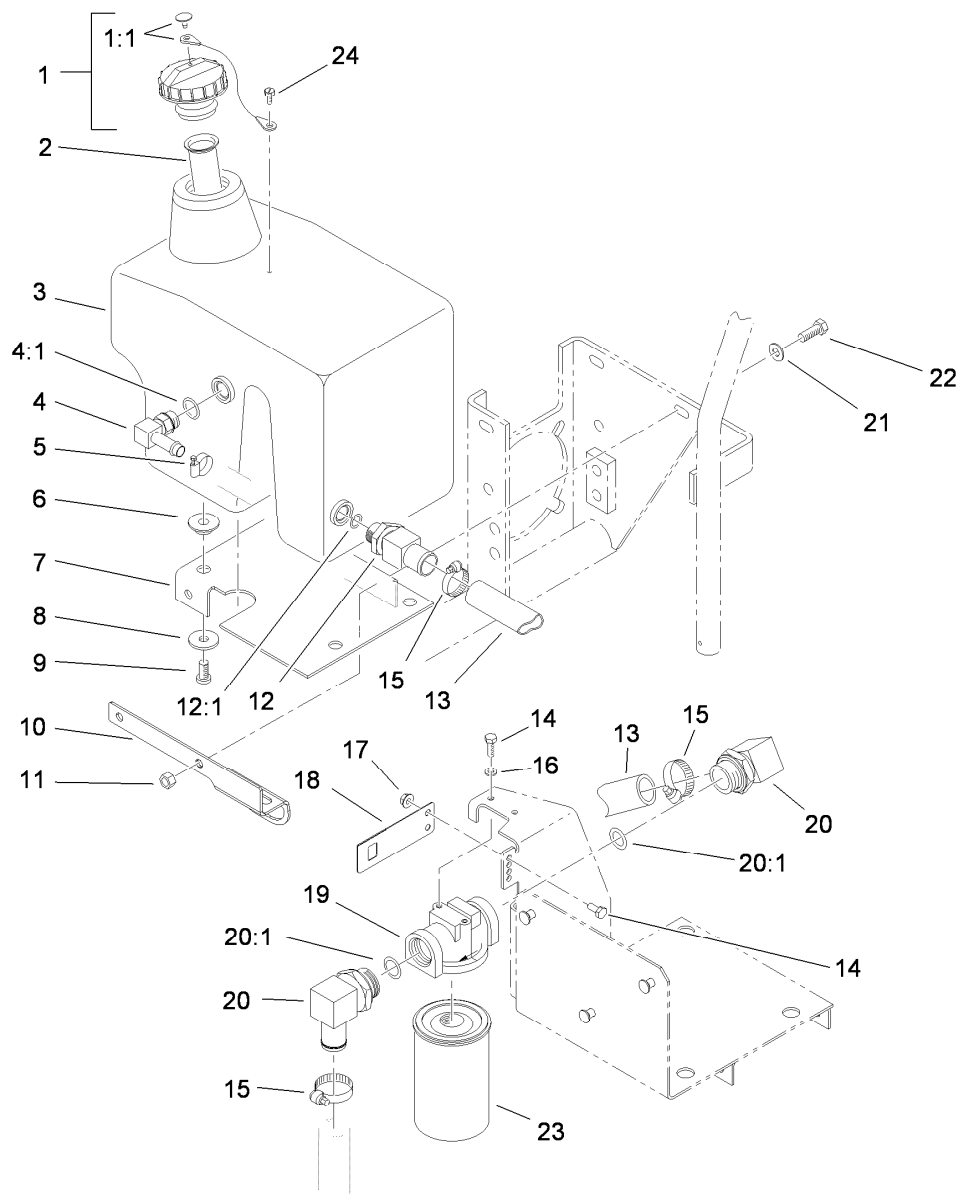
Shroud, Relay, Air Cleaner and Oil Cooler Assembly

Ref.	Part Number	Qty.	Description	Ref.	Part Number	Qty.	Description
1	99-1644	1	Dash Shroud ASM	13:5:2	249-40	1	Keeper
1:2	32148-6	4	Insert-Nut	13:6	94-1392	2	Pad-Rubber
2	3234-33	3	Screw-HHF	13:7	3269-28	2	Rivet-Pop
3	3296-29	6	Nut-Lock, NI	13:8	119-2482	1	Decal-Operating
4	3256-23	4	Washer-Flat	13:9	93-7252	1	Decal-Ce Mark
5	95-5806	1	Bracket-Mounting	13:10	3256-14	2	Washer-Flat
6	95-5805	1	Air Cleaner ASM	14	95-0582	1	Hose-Intake, Air
7	92-7158	1	Tread-Floor, RH	15	114-0679	1	Tube-HYD
8	322-5	4	Screw-HH	18	95-5826	1	Shield-Rubber
9	95-5817	1	Front Shield ASM	19	95-0620-01	1	Strip-Retainer
9:1	249-40	2	Keeper	20	92-7159	1	Tread-Floor, LH
9:2	32148-6	3	Insert-Nut	21	92-8997	1	Cooler-Oil
9:3	3269-8	4	Rivet-Blind	22	353-371	2	Fitting-Elbow-90
10	322-11	2	Screw-HH	22:1	237-79	1	O-Ring
11	46-8560	6	Screw-HHFTF	24	85-9550	2	Rubber Clamp ASM
12	322-2	2	Screw-HH	24:1	85-9670	1	T-Nut
13	95-0610	1	Engine Cover ASM	25	3256-82	3	Washer-Flat
13:2	95-0611	1	Bracket-RH	28	85-9120	2	Spacer-Pivot, Tilt
13:3	95-0612	1	Bracket-LH	29	2412-92	2	Clamp-Hose
13:4	3269-8	6	Rivet-Blind	30	106-8101	2	Decal
13:5	59-9740	2	Flex Draw Latch ASM	33	99-7430	3	Relay



Air Cleaner Assembly No. 95-5805

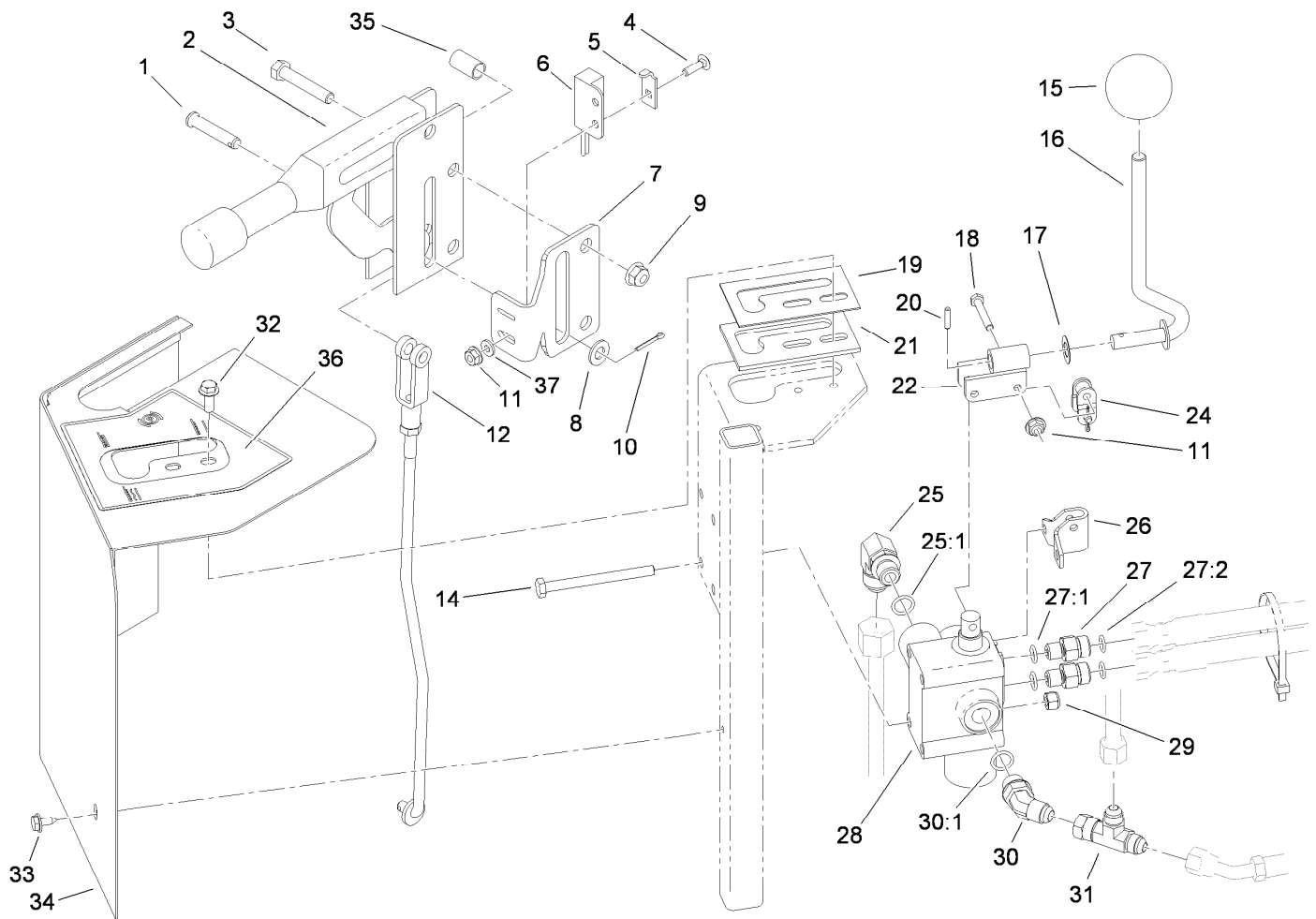
<i>Ref.</i>	<i>Part Number</i>	<i>Qty.</i>	<i>Description</i>
2	108-3811	1	Filter-Air
3	94-3652	1	Cover ASM
3:1	1-643283	2	Latch-Cleaner, Air
4	87-9400	1	Valve-Vacuator
5	285-17	1	Plug-Pipe



Hydraulic Oil Reservoir and Filter Assembly

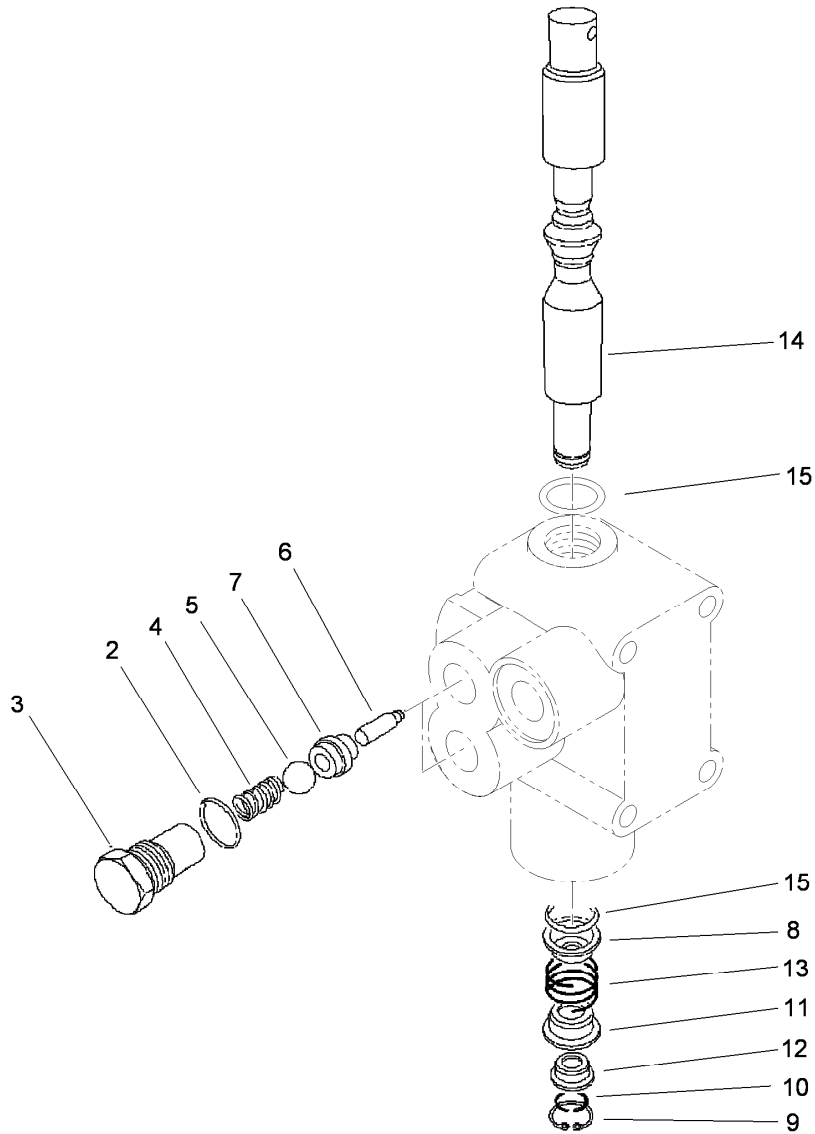
Ref.	Part Number	Qty.	Description
1	93-4365	1	Cap-Oil
1:1	75-0540	1	Tether And Button Kit
2	92-1705	1	Filter-Screen
3	98-0968	1	Tank-HYD
4	354-120	1	Fitting-HYD, 90 DEG
4:1	237-79	1	O-Ring
5	2412-36	1	Clamp-Hose
6	240-11	4	Bushing-Flange
7	95-0590-03	1	Base-Tank, HYD
8	63-8410	3	Washer
9	3250-36	3	Screw-PPH
10	112-7683	1	Shield-Muffler
11	3296-39	3	Nut-Lock, NI
12	354-136	1	Fitting-HYD

Ref.	Part Number	Qty.	Description
12:1	237-80	1	O-Ring
13	107-2152	1	Hose-Suction
14	321-3	4	Screw-HH
15	2412-129	4	Clamp-Hose
16	3253-3	2	Washer-Lock
17	32128-33	2	Nut-HF
18	112-7677	1	Clip-Spring
19	68-8990	1	Filter Head ASM
20	353-987	2	Fitting-HYD, 90
20:1	237-81	1	O-Ring
21	3256-24	3	Washer-Flat
22	323-7	3	Screw-HH
23	23-9740	1	Filter-Oil
24	57-5420	1	Screw-Shoulder



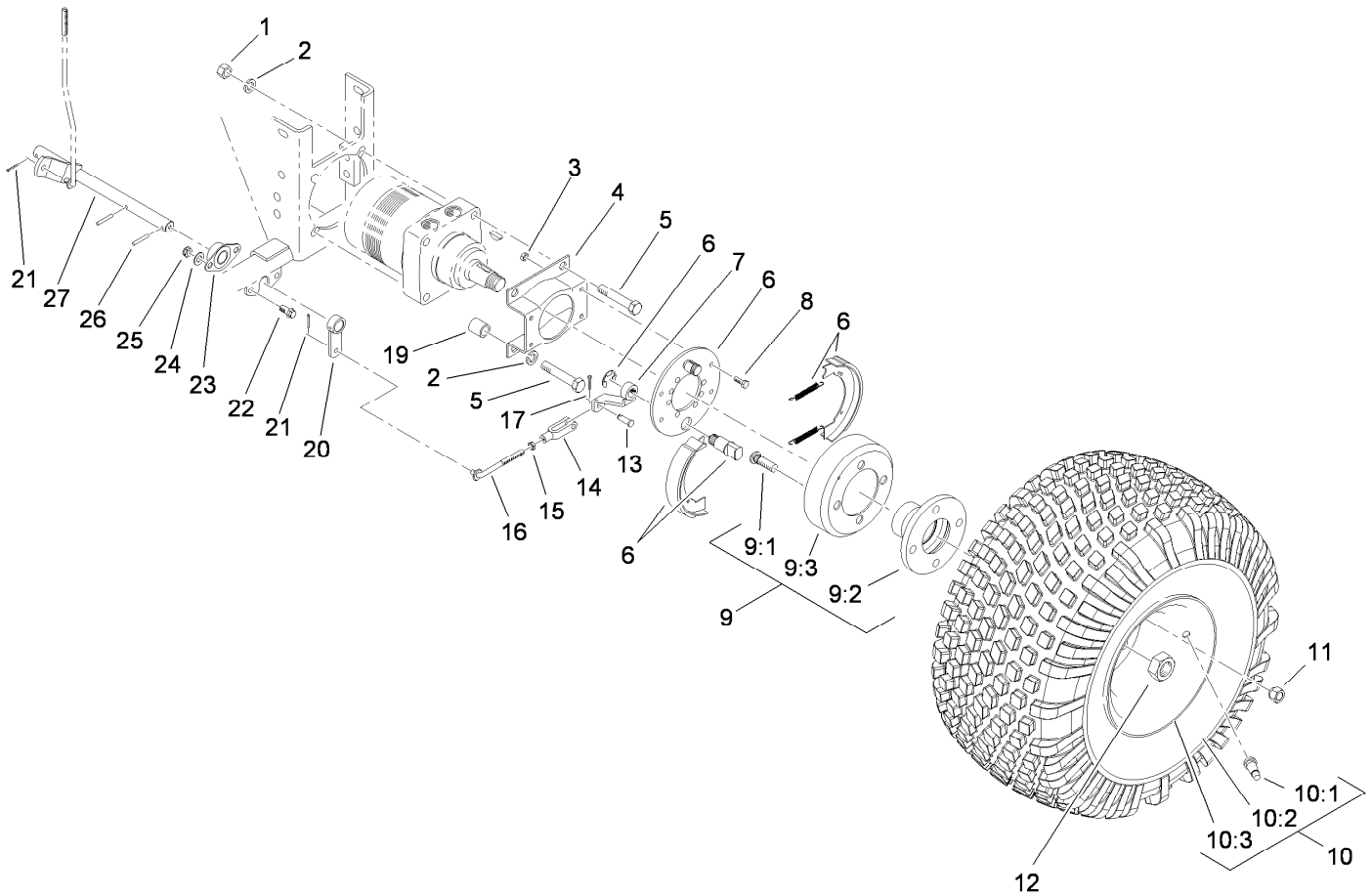
Lift Valve Installation Assembly

Ref.	Part Number	Qty.	Description	Ref.	Part Number	Qty.	Description
1	94-3829	1	Pin-Clevis	22	92-8983	1	Pivot
2	95-0636	1	Lever-Brake	24	2710-20	1	Link-Offset
3	322-21	2	Screw-HH	25	353-511	1	Fitting-HYD, 90 DEG
4	3229-20	1	Screw-CARR	25:1	237-42	1	O-Ring
5	100-4872	1	Plate-Switch, Neutral	26	88-8480	1	Bracket-Pivot
6	106-9288	1	Sensor-Proximity, Ferrous	27	340-92	2	Fitting-HYD, Straight
7	114-4364	1	Bracket-Sensor, Brake	27:1	237-78	1	O-Ring
8	3256-3	1	Washer-Flat	27:2	237-21	1	O-Ring
9	104-8300	2	Nut-Flange, NI	28	43-1710	1	Valve ASM
10	3272-6	1	Pin-Cotter	29	3296-42	4	Nut-Lock, NI
11	32128-17	3	Nut-Lock, Flange	30	353-212	1	Fitting-HYD, 45 DEG
12	115-6699	1	Brake Rod ASM	30:1	237-42	1	O-Ring
14	321-23	4	Screw-HH	31	353-877	1	Fitting-HYD, Tee (Swivel)
15	233-21	1	Knob	32	3234-33	2	Screw-HHF
16	92-8981	1	Lift Lever ASM	33	32104-76	1	Screw
17	3290-477	1	Washer-Curved	34	95-0601-01	1	Valve Shroud ASM
18	3290-360	2	Screw-HH	35	85-0290	2	Spacer-Pivot, Seat
19	95-5833	1	Guide-Lever	36	95-0647	1	Decal-Control
20	32121-73	1	Pin-Roll	37	3256-21	1	Washer-Flat
21	21-8640	1	Latch-Lever, Valve				



Valve Assembly No. 43-1710

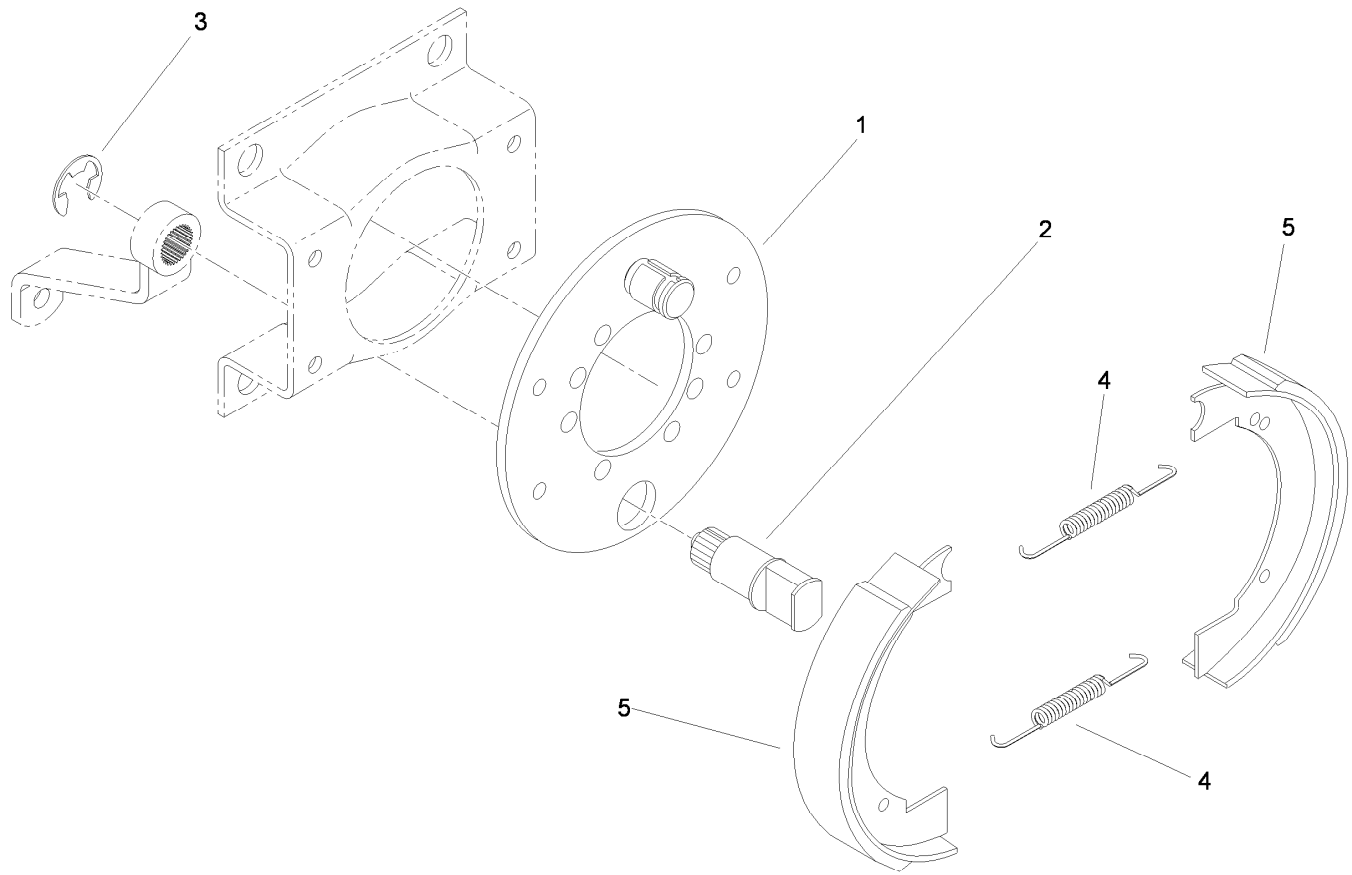
<i>Ref.</i>	<i>Part Number</i>	<i>Qty.</i>	<i>Description</i>
2	237-42	2	O-Ring
3	22-8330	2	Plug
4	22-8340	2	Spring
5	22-8350	2	Ball
6	22-8360	2	Pin
7	22-8370	2	Seat-Valve
8	22-8380	1	Retainer
9	22-8490	1	Ring-Snap
10	22-8480	1	Ring-Snap
11	22-8390	1	Retainer
12	22-8400	1	Spacer
13	22-8410	1	Spring
14	22-8420	1	Spool
15	22-8500	2	O-Ring



Brake Installation Assembly

Ref.	Part Number	Qty.	Description	Ref.	Part Number	Qty.	Description
1	3217-9	4	Nut-HH	11	242-50	8	Nut-Lug
2	3253-7	8	Washer-Lock	12	26-3790	2	Nut-Lock
3	3296-42	8	Nut-Lock, NI	13	283-1	2	Pin-Clevis
4	84-2000-03	2	Bracket-Brake	14	282-2	2	Yoke
5	325-14	8	Screw-HH	15	3220-2	2	Nut-Jam
6	104-7705	2	Brake ASM	16	84-1990	2	Rod-Adjusting
7	114-2726	2	Lever-Brake	17	3272-10	2	Pin-Cotter
8	321-4	8	Screw-HH	19	92-1715	8	Spacer
9	17-8149	2	Wheel Hub ASM	20	83-9310	2	RH Brake Lever ASM
9:1	85-6540	4	Stud-Drive	21	3272-6	3	Pin-Cotter
9:2	93-6838-03	1	Hub-Wheel	22	3234-1	4	Screw-HHF
9:3	10-6850	1	Drum-Brake	23	27-2320	2	Bearing
10		2	Wheel And Tire ASM ●	24	3256-24	4	Washer-Flat
10:1	5108	1	Valve	25	3296-59	4	Nut-Lock, NI
10:2	85-8290	1	Tire-2Ply, Knobby	26	32121-6	4	Pin-Roll, Slotted
10:3	94-6116	1	Wheel-Rear	27	95-0625	1	Rod-Traversal

● Not serviced separately



Brake Assembly No. 104-7705

<i>Ref.</i>	<i>Part Number</i>	<i>Qty.</i>	<i>Description</i>
1	70-9870	1	Plate-Backing
2	104-7707	1	Shaft-Cam, Brake
3	104-7706	1	E-Ring, Bowed
4	70-9880	2	Spring-Return
5	70-9840	2	Shoe-Brake

Attachments and Accessories

For 08884 Sand Pro 2020 Traction Unit

Product Name	Model/Part
Rake-Tooth	08812
Rake-Spring.....	08813
Mounting Kit.....	08814
Weeder / Cultivator	08815
Front Blade Kit.....	08821
Drag Mat Kit.....	08850
Spiker	08856
Cyclone 1000 Debris Blower.....	08857
Debris Blower Installation Kit	08858
Chute-Discharge.....	08860
Finish Grader	08867
Red Gas Cap	107-2173
Yellow Hydraulic Fluid Cap (Tethered)	107-2174
Sand Blade 240	44900
Bar-Draw	92-2330
Screen-Arrestor, Spark.....	95-5819
CE Update Kit.....	95-5832



Count on it.