



**Count on it.**

**Parts Catalog**

**5-Blade 27in DPA Cutting Unit  
Reelmaster® 3100-D Series Traction Unit  
Model No. 03180—Serial No. 31000001 and Up**

# Ordering Replacement Parts

To order replacement parts, please supply the part number, the quantity, and the description of each part desired.

## Understanding Reference Numbers

Each identified part in an illustration has a reference number. The reference number for a part also appears in the parts list, along with other information about the part.

This catalog uses two special reference number formats, one to indicate parts in a service assembly and another to indicate the quantity of a given part in an illustration.

## Service Assembly Reference Numbers

Parts in service assemblies have reference numbers in the form a:b. The a represents the reference number of the entire service assembly and the b represents a sequential number unique to each part within the service assembly.

For example, a wheel assembly might be identified by reference number 6, the tire by 6:1, the valve by 6:2, and the wheel by 6:3. When you order the assembly identified by reference number 6, you receive all parts identified by reference numbers 6:1, 6:2, and 6:3. However, you may also order any part individually. Reference numbers of this type appear in illustration and in parts lists.

## Reference Numbers Indicating Quantity

In an illustration, if a reference number indicates more than one part, the reference number has the form nX y. The n represents the quantity of the part, the X is the multiplication symbol, and the y represents the reference number.

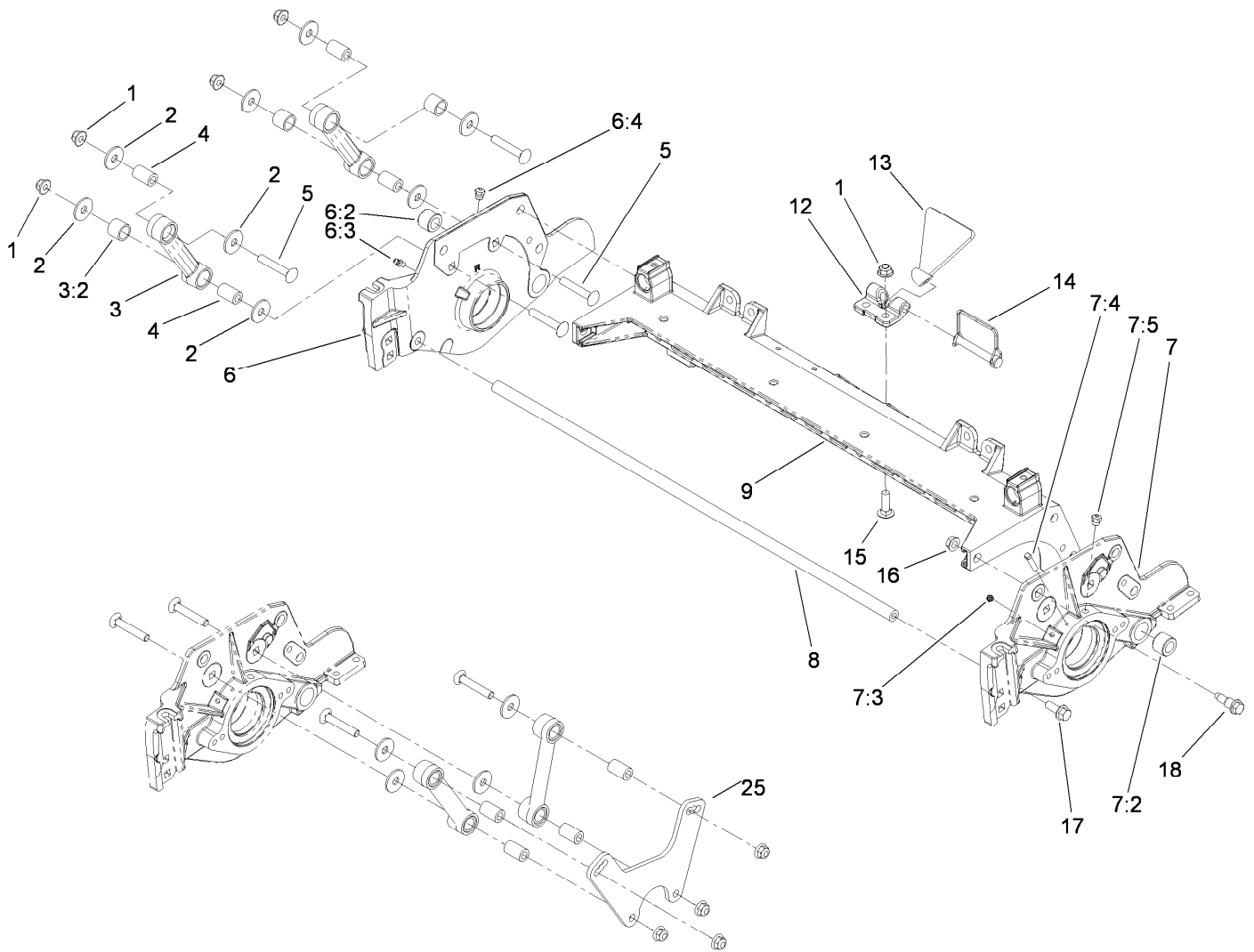
For example, in an illustration, the reference number 2X 37 means that two of the parts identified by reference number 37 are indicated.

# List of Abbreviations

<b>AR:</b> as required	<b>HSBH:</b> hex socket button head	<b>SFH:</b> slotted fillister head
<b>ASM:</b> assembly	<b>HSFH:</b> hex socket flat head	<b>SHH:</b> slotted hex head
<b>BBC:</b> blade brake control	<b>HSH:</b> hex socket head	<b>SHWH:</b> slotted hex washer head
<b>BHTF:</b> button head thread forming	<b>HWH:</b> hex washer head	<b>SPH:</b> slotted pan head
<b>CARR:</b> carriage	<b>HWHTF:</b> hex washer head thread forming	<b>SQH:</b> square head
<b>CCW:</b> counter clockwise	<b>HYD:</b> hydraulic	<b>SRH:</b> slotted round head
<b>CW:</b> clockwise	<b>LH:</b> left hand	<b>STD:</b> standard
<b>DEG:</b> degrees	<b>LP:</b> Liquid Propane	<b>TAP:</b> self tapping
<b>ECM:</b> electronic control module	<b>NI:</b> nylon insert	<b>TTH:</b> torx truss head
<b>EXT:</b> external	<b>NPTF:</b> national pipe thread fine	
<b>FH:</b> flat head	<b>PFH:</b> phillips flat head	
<b>GA:</b> gauge	<b>PPH:</b> phillips pan head	
<b>HD:</b> heavy-duty	<b>PPHTF:</b> phillips pan head thread forming	
<b>HF:</b> hex flange	<b>PRH:</b> phillips round head	
<b>HH:</b> hex head	<b>PTH:</b> phillips truss head	
<b>HHF:</b> hex head flange	<b>PTO:</b> power-take-off	
<b>HHFTF:</b> hex head flange thread forming	<b>RH:</b> right hand	
<b>HJ:</b> hex jam	<b>ROPS:</b> roll-over protection system	
<b>HLH:</b> hex lag head	<b>RRB:</b> rear roller brush	
<b>HOC:</b> height-of-cut		

# Contents

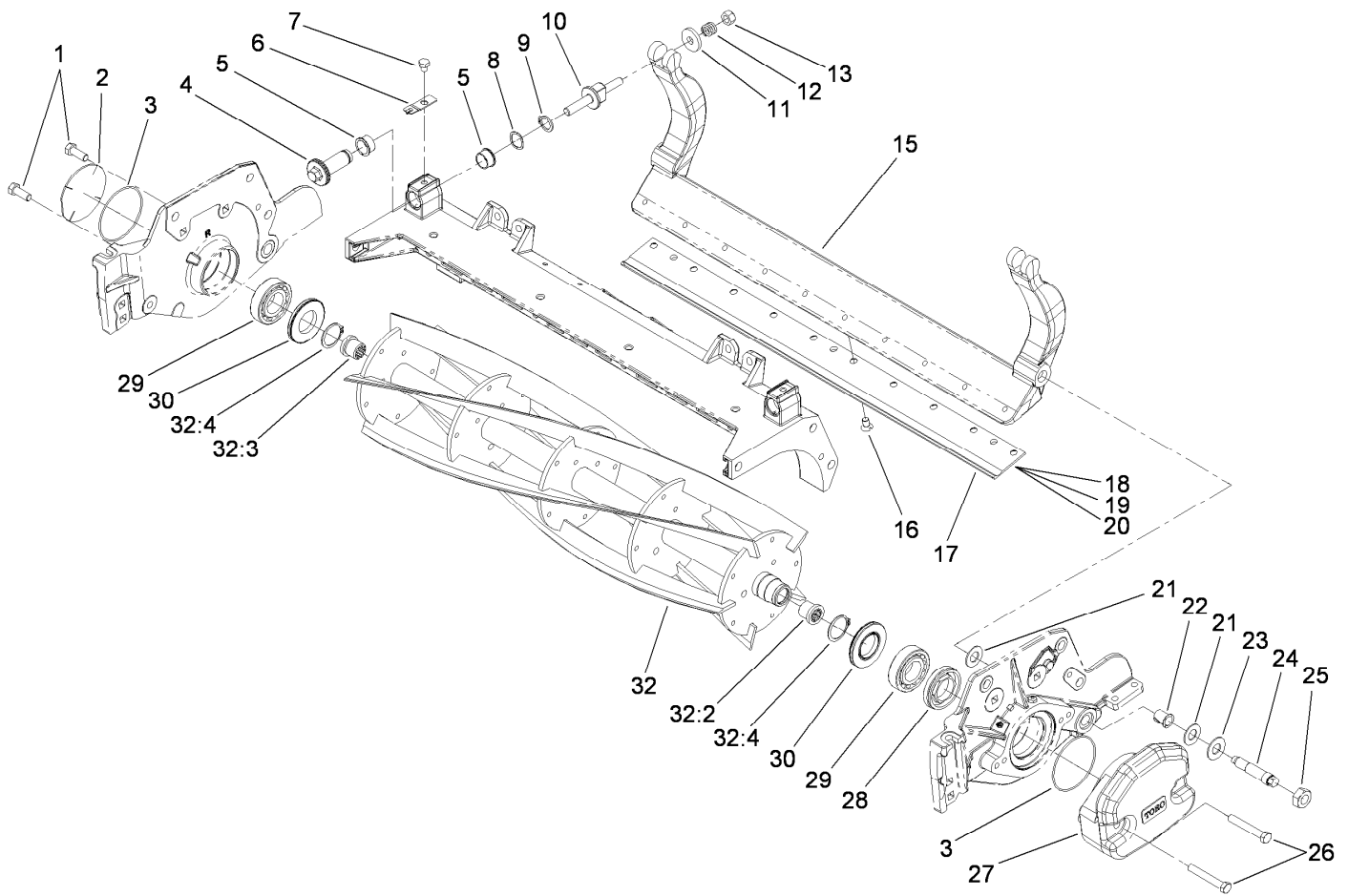
Frame Assembly.....	4
Reel and Bedbar Assembly .....	5
Front and Rear Roller Assembly .....	6
Long Roller Assembly No. 112-8915.....	7
Full Front Roller Assembly No. 114-9383.....	8
Wiehle Roller Assembly No. 117-0960.....	9
Shoulder Roller Assembly No. 119-0630 .....	10
High Height-of-Cut Assembly No. 110-9600 .....	11
Shield Assembly.....	12
Optional Tools .....	13
Attachments and Accessories .....	14



## Frame Assembly

Ref.	Part Number	Qty.	Description	Ref.	Part Number	Qty.	Description
1	104-8301	10	Nut-Flange, NI	7:4	107-7447	1	Screw-Set, SQH
2	93-8806	16	Washer-Hardened	7:5	302-39	1	Fitting-Plug
3	16-9759	4	Link ASM	8	112-8936	1	Tube-Support
3:2	94-8945	2	Bushing	9	112-8935	1	Frame-Center
4	93-6981	8	Spacer	12	110-4058	1	Bracket-Chain
5	3231-40	8	Bolt-CARR	13	110-4088-03	1	Kickstand ●
6	115-4263	1	Plate-Side, RH	14	107-7400	1	Pin-Snapper ●
6:2	106-9618	1	Rubber Bushing ASM	15	3231-25	2	Screw-CARR
6:3	302-5	1	Fitting-Grease	16	3290-357	6	Nut-HHF, Whiz
6:4	302-39	1	Fitting-Plug	17	3234-11	2	Screw-HHF
7	115-4260	1	Plate-Side, LH	18	107-2979	6	Bolt-Shoulder
7:2	106-9618	1	Rubber Bushing ASM	25	119-0646-03	2	Plate-Fixed (High HOC) ●
7:3	302-5	1	Fitting-Grease				

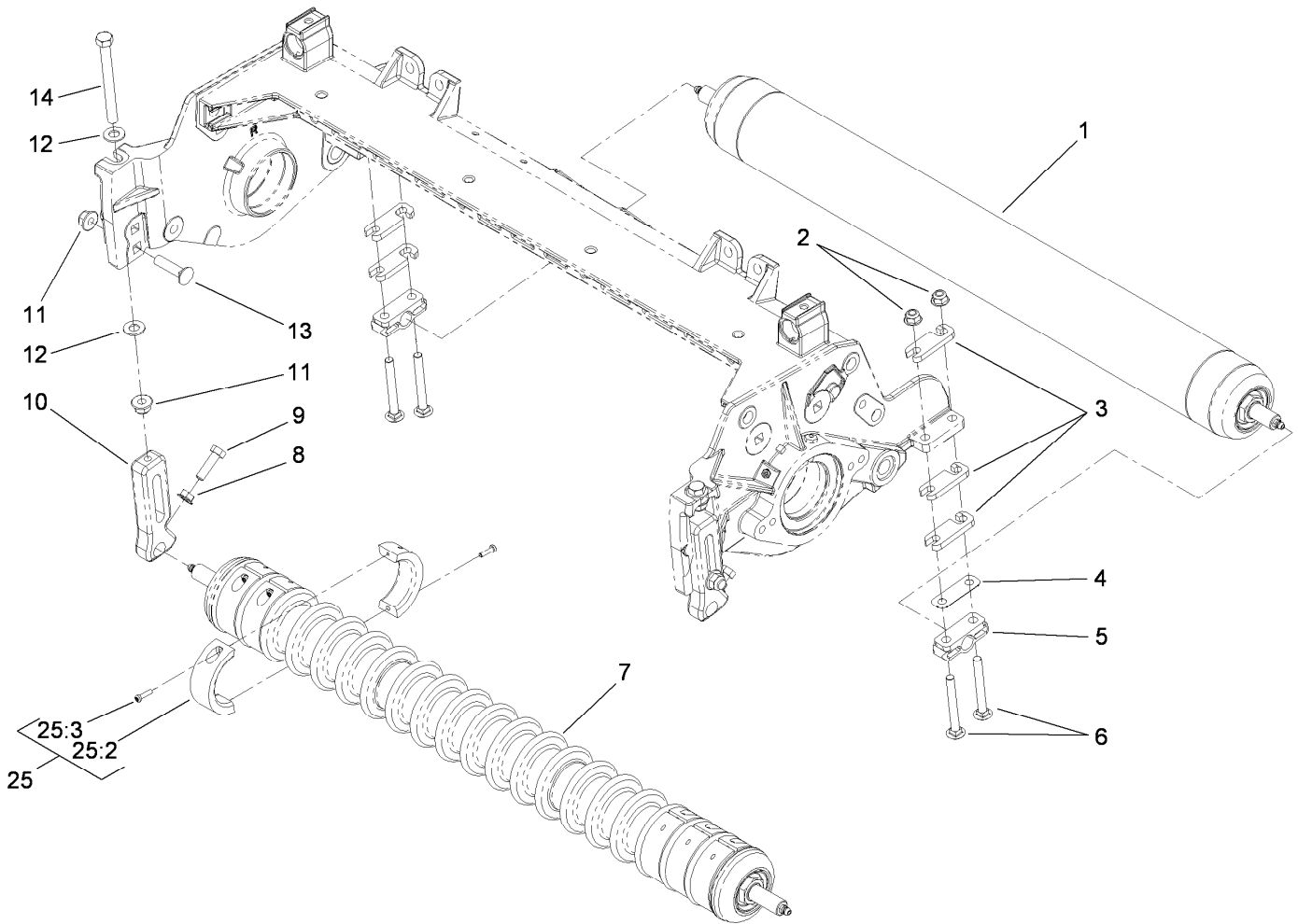
● Optional Equipment



## Reel and Bedbar Assembly

Ref.	Part Number	Qty.	Description	Ref.	Part Number	Qty.	Description
1	323-6	2	Screw-HH	19	114-9390	1	Bedknife-HD ●
2	94-2703	1	Plug	20	119-0618	1	Bedknife-Extended, Low HOC ●
3	112-6967	2	O-Ring	21	61-1950	4	Washer-Plastic
4	106-5363	2	Shaft-Adjuster	22	56-9520	2	Bushing-Flanged
5	106-5344	4	Bushing-Flange, Keyed	23	69-8980	2	Washer
6	99-2097	2	Detent	24	106-9623	2	Bolt-Bedbar
7	114-9396	2	Capscrew-HH	25	3296-33	2	Nut-Lock, NI
8	106-5335	2	Washer-Wave	26	323-12	2	Screw-HH
9	32120-93	2	Ring-Retaining	27	119-0614-01	1	Weight-End
10	99-2096	2	Screw-Adjuster, Bedbar	28	107-2954	1	Nut-Adjuster, Bearing
11	99-2098	2	Washer	29	93-2489	2	Bearing
12	99-3755	2	Spring-Compression	30	107-4028	2	Seal-Grease
13	33025-00	2	Nut-Lock, NI	32	115-8270	1	5-Blade Reel ASM
15	112-8908-01	1	Bedbar	32:2	107-3276	1	Insert-Threaded, LH
16	57-4910	10	Screw-Special	32:3	107-3275	1	Insert-Threaded, RH
17	114-9388	1	Bedknife-STD	32:4	92-2601	2	Ring-Retaining
18	112-8910	1	Bedknife-Edgemax ●				

● Optional Equipment

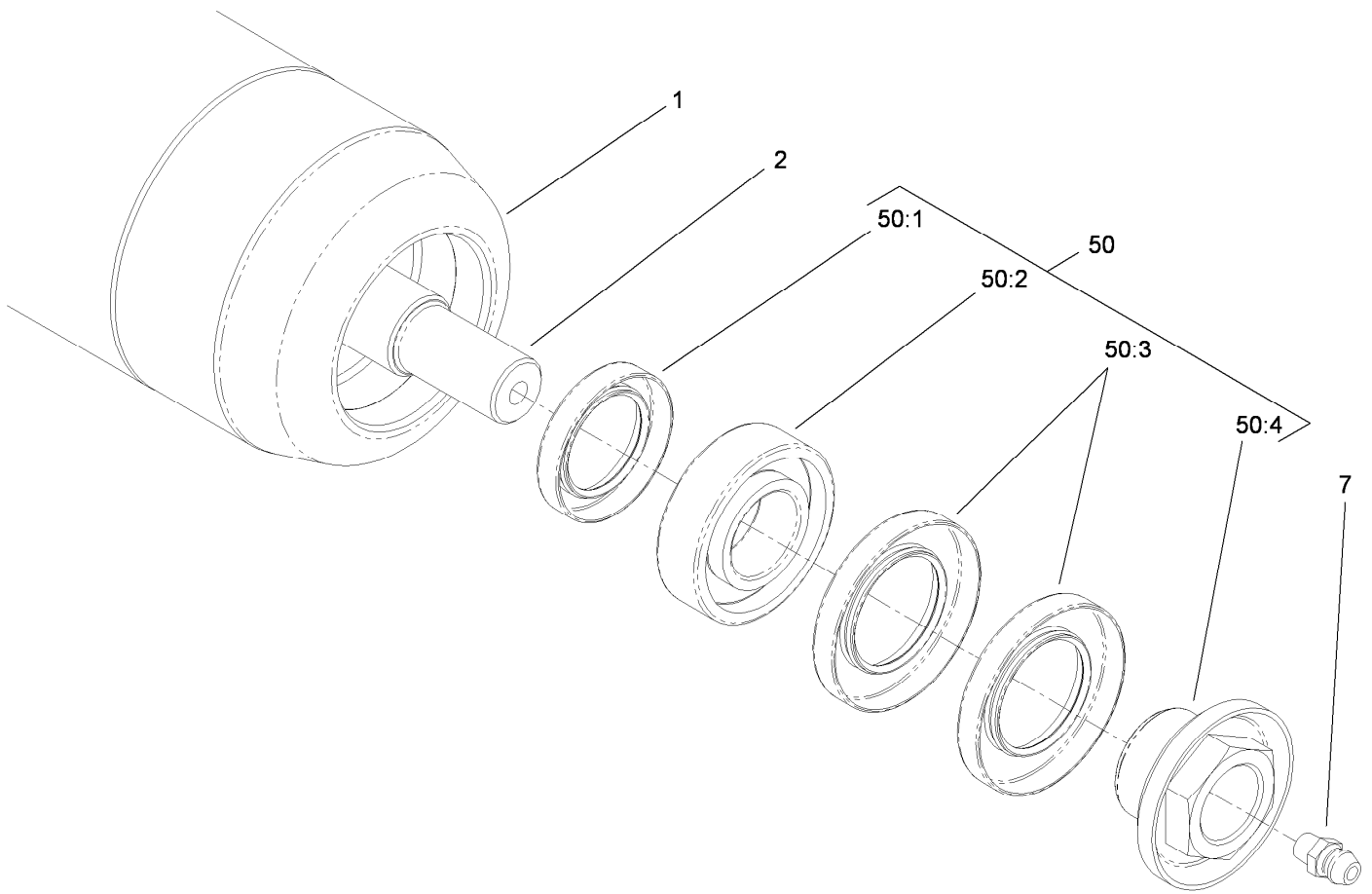


## Front and Rear Roller Assembly

Ref.	Part Number	Qty.	Description
1	112-8915	1	Rear Roller ASM (3-Inch Dia)
2	104-8300	4	Nut-Flange, NI
3	119-0626	6	Shim-Roller
4	107-4001	2	Shim-Roller (0.01) ■
5	106-3924	2	Bracket-Roller, Rear
6	3230-9	4	Screw-CARR
7	114-9383	1	Full Front Roller ASM (3-Inch Dia) ●■
7	117-0960	1	Plastic Wiehle Roller ASM
7	119-0630	1	Plastic Shoulder Roller ASM ●■
8	32128-20	2	Nut-HF
9	322-16	2	Screw-HH
10	107-2952	2	Bracket-HOC, Front
11	104-8301	4	Nut-Flange, NI
12	48-9220	4	Washer
13	3231-4	2	Screw-CARR
14	107-4026	2	Screw-HH
25	119-0649	6	Trim/HD Collar Kit ■
25:2	119-1604	2	Collar-Tim/HD
25:3	104-1835	2	Screw
50	110-9600	1	High HOC Kit ●■

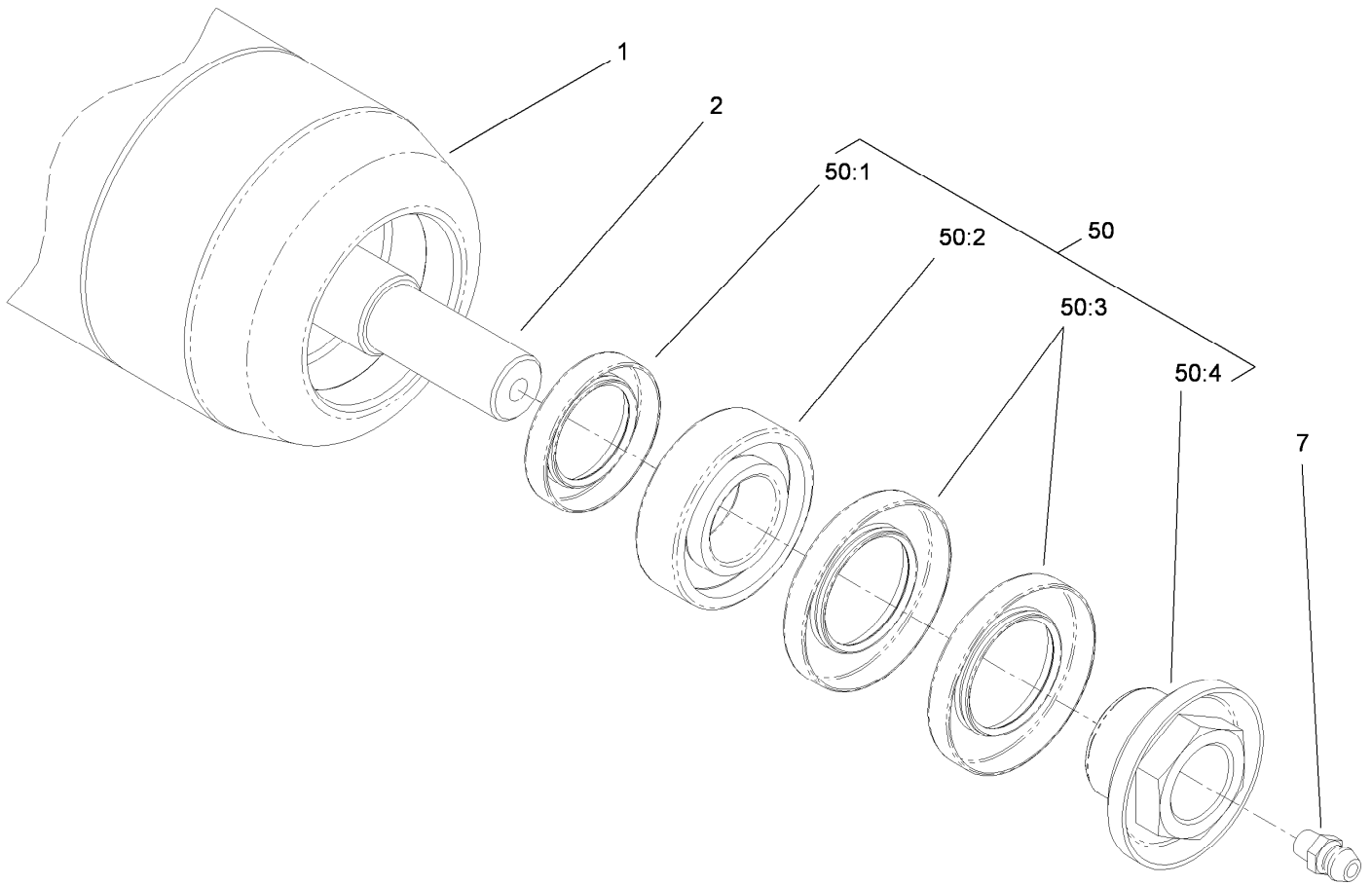
● Not illustrated

■ Optional Equipment



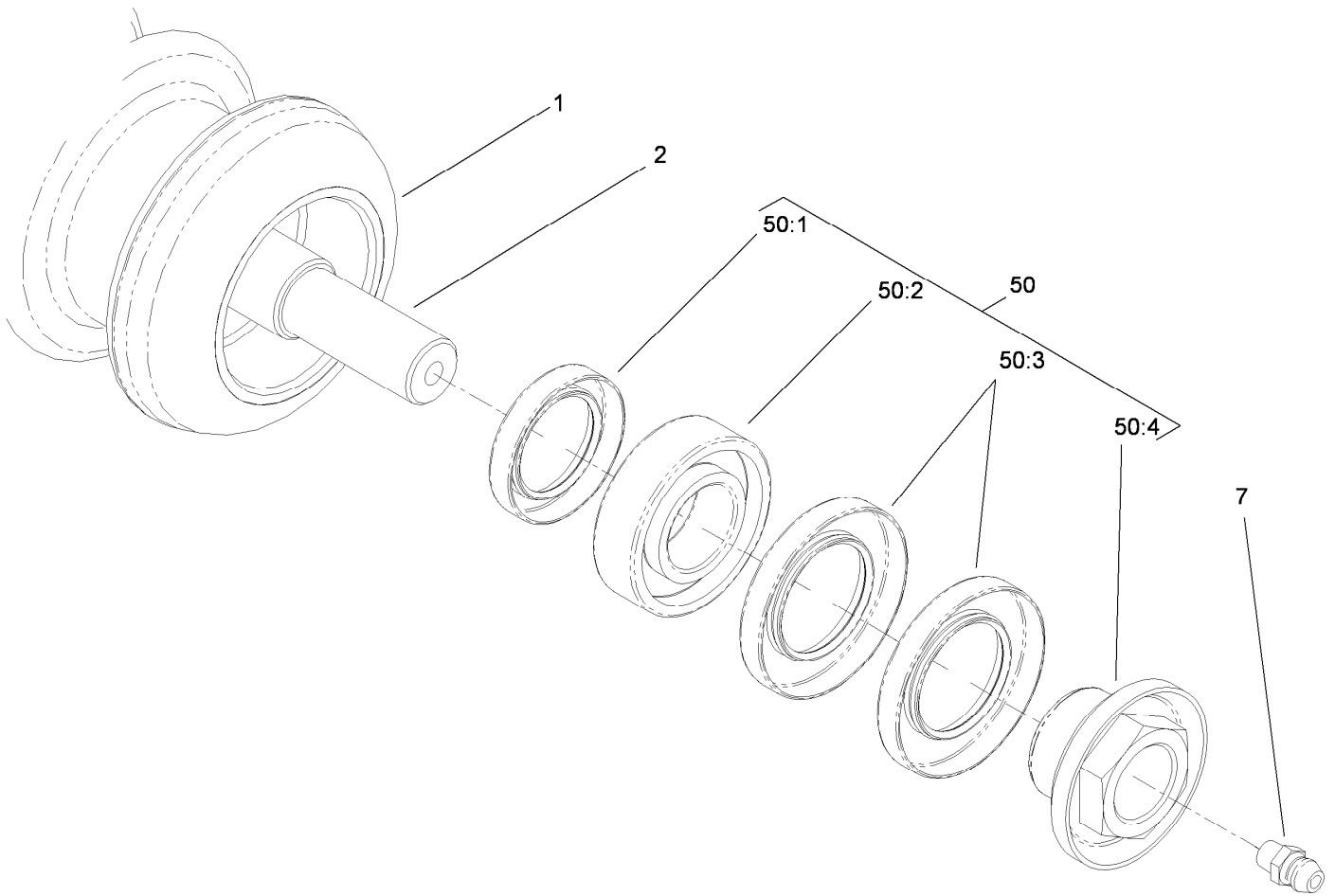
## Long Roller Assembly No. 112-8915

<i>Ref.</i>	<i>Part Number</i>	<i>Qty.</i>	<i>Description</i>
1	112-8916-03	1	Long Roller Tube ASM
2	112-8918	1	Shaft-Long, Rear Roller
7	302-5	2	Fitting-Grease
50	114-5430	1	Roller Rebuild Kit
50:1	114-3717	2	Seal-Oil
50:2	112-5290	2	Bearing-Steel, Stainless
50:3	112-7494	4	Seal
50:4	114-5411	2	Nut-Lock, Bearing



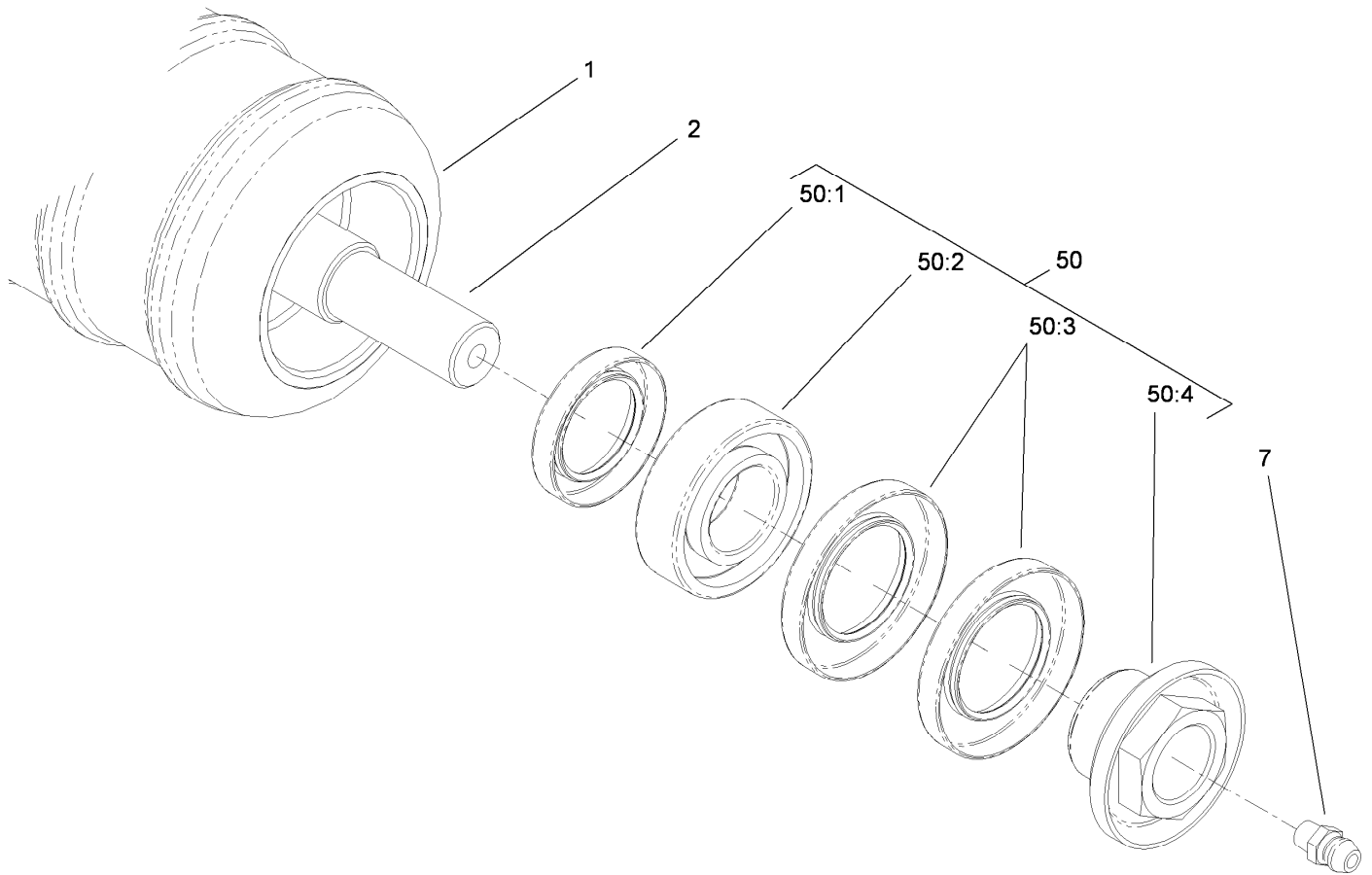
## Full Front Roller Assembly No. 114-9383

<i>Ref.</i>	<i>Part Number</i>	<i>Qty.</i>	<i>Description</i>
1	112-8916-03	1	Long Roller Tube ASM
2	117-0957	1	Shaft-Roller, Wiehle
7	302-5	2	Fitting-Grease
50	114-5430	1	Roller Rebuild Kit
50:1	114-3717	2	Seal-Oil
50:2	112-5290	2	Bearing-Steel, Stainless
50:3	112-7494	4	Seal
50:4	114-5411	2	Nut-Lock, Bearing



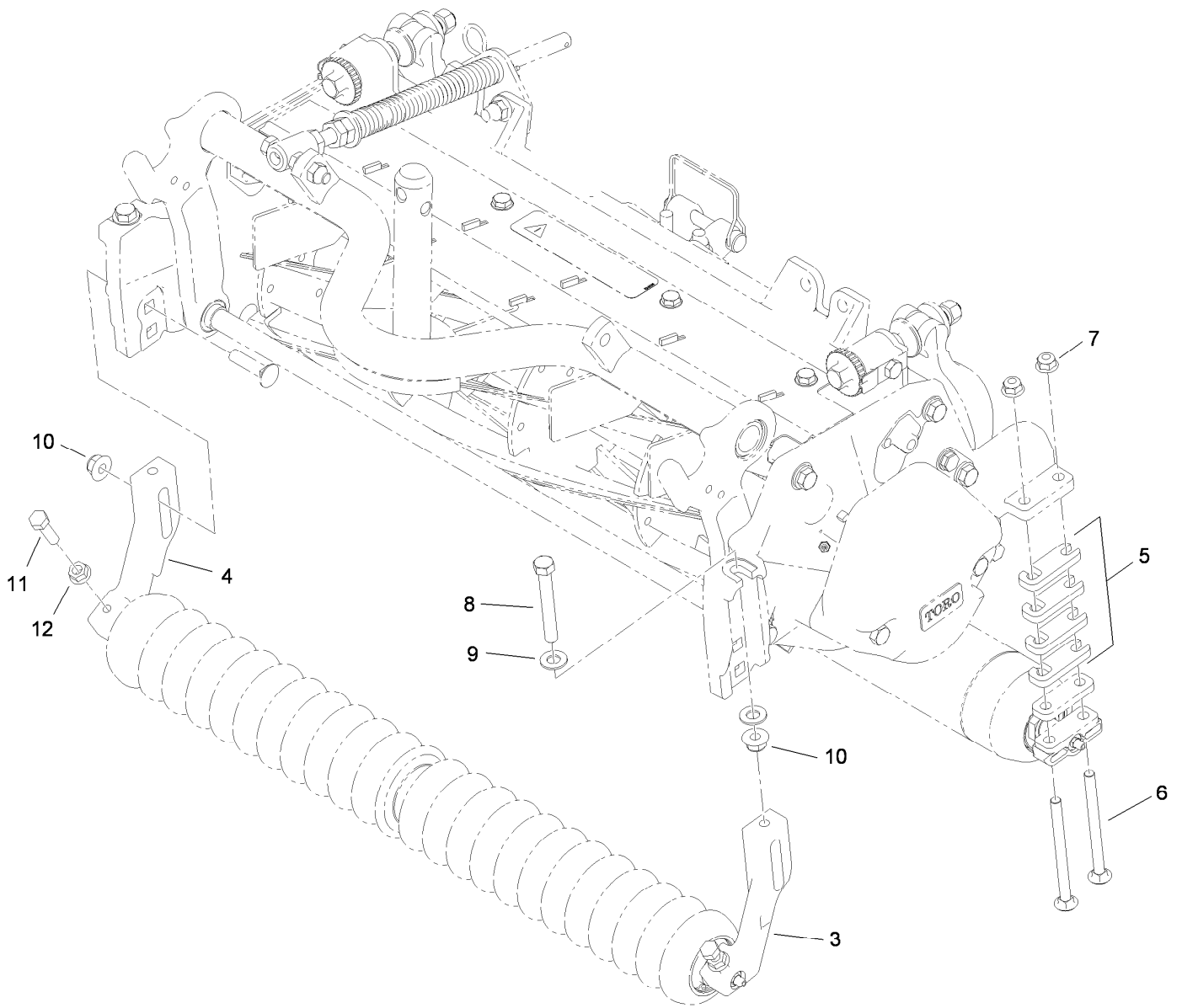
## Wiehle Roller Assembly No. 117-0960

<i>Ref.</i>	<i>Part Number</i>	<i>Qty.</i>	<i>Description</i>
1	117-0959	1	Roller-Wiehle, Plastic
2	117-0957	1	Shaft-Roller, Wiehle
7	302-5	2	Fitting-Grease
50	114-5430	1	Roller Rebuild Kit
50:1	114-3717	2	Seal-Oil
50:2	112-5290	2	Bearing-Steel, Stainless
50:3	112-7494	4	Seal
50:4	114-5411	2	Nut-Lock, Bearing



## Shoulder Roller Assembly No. 119-0630

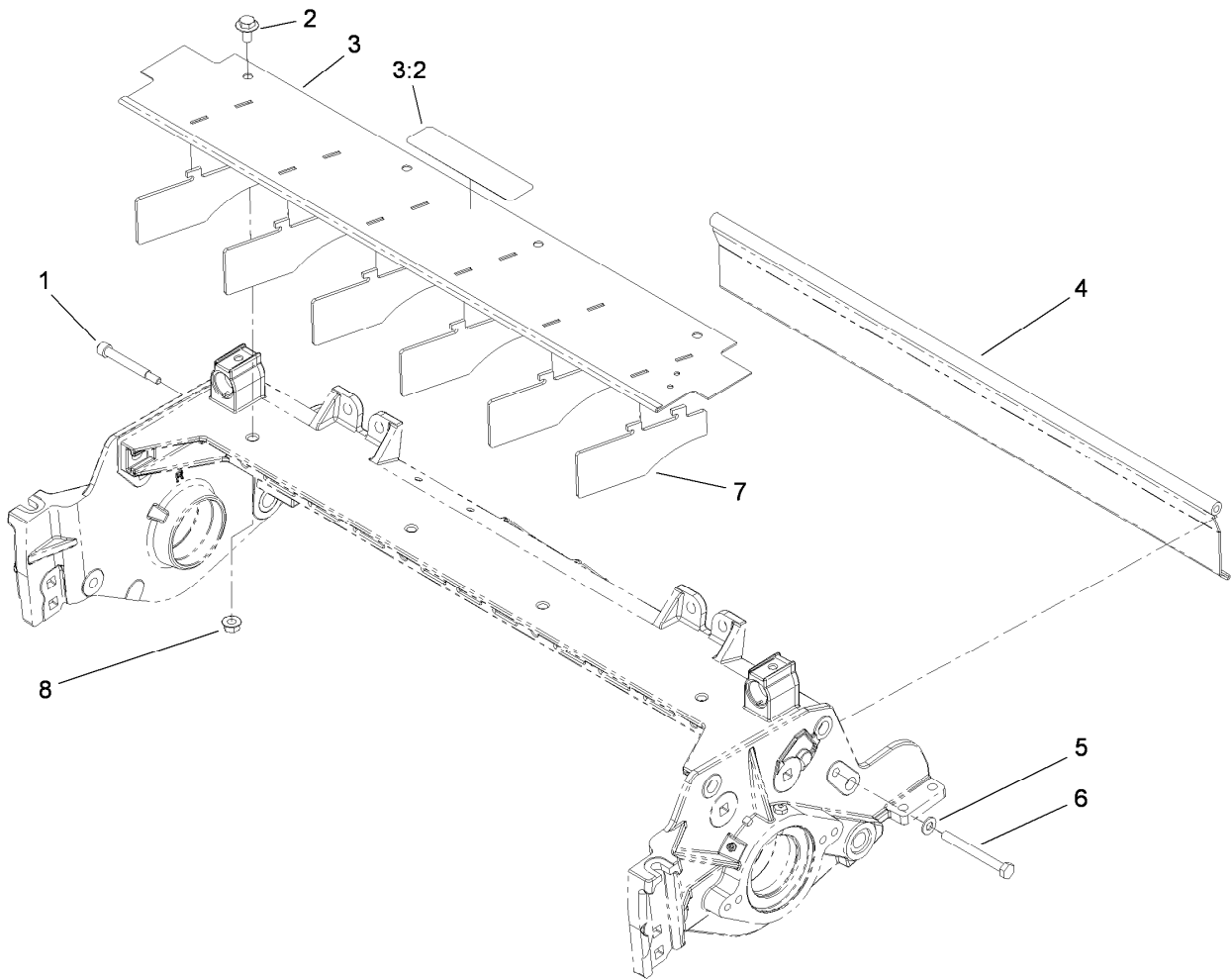
<i>Ref.</i>	<i>Part Number</i>	<i>Qty.</i>	<i>Description</i>
1	119-0631	1	Roller-Shoulder, Plastic
2	117-0957	1	Shaft-Roller, Wiehle
7	302-5	2	Fitting-Grease
50	114-5430	1	Roller Rebuild Kit
50:1	114-3717	2	Seal-Oil
50:2	112-5290	2	Bearing-Steel, Stainless
50:3	112-7494	4	Seal
50:4	114-5411	2	Nut-Lock, Bearing



## High Height-of-Cut Assembly No. 110-9600

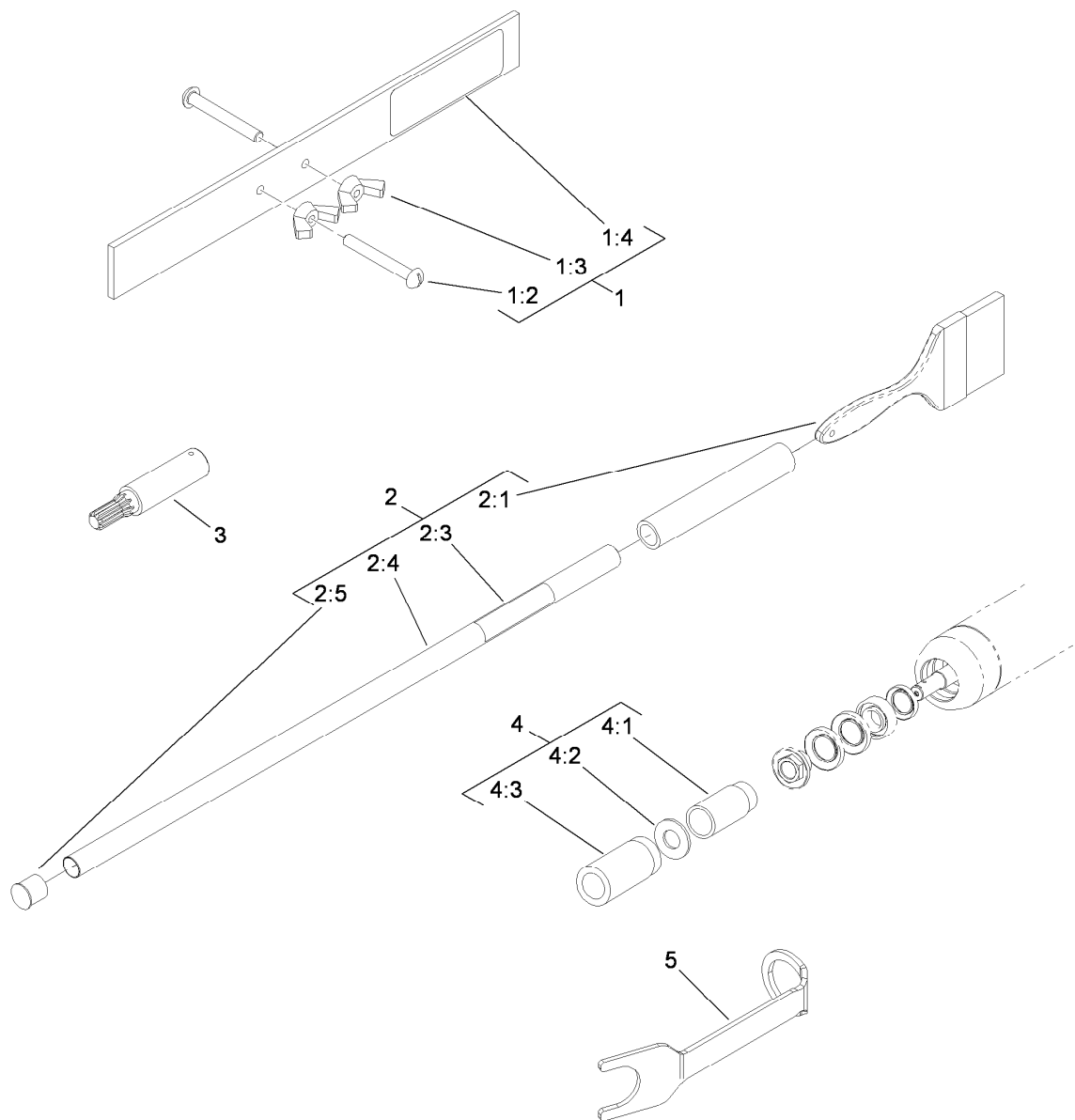
Ref.	Part Number	Qty.	Description
3	108-4213	1	Bracket-HOC, Groomer (LH)
4	108-4214	1	Bracket-HOC, Groomer (RH)
5	119-0626	8	Shim-Roller
6	106-9758	4	Screw-CARR
6	3230-30	4	Screw-CARR ●
7	104-8300	4	Nut-Flange, NI
8	112-7451	2	Screw-TAP
9	48-9220	4	Washer
10	104-8301	4	Nut-Flange, NI
11	322-16	2	Screw-HH
12	32128-20	2	Nut-HF

● Optional Equipment



## Shield Assembly

<i>Ref.</i>	<i>Part Number</i>	<i>Qty.</i>	<i>Description</i>
1	107-7773	1	Screw-HSH
2	3234-7	4	Screw-HHF
3	112-8942	1	Front Grass Shield ASM
3:2	93-6688	1	Decal-Danger
4	112-8944-01	1	Rear Grass Shield ASM
5	3256-74	1	Washer-Flat
6	322-14	1	Screw-HH
7	110-1706	6	Deflector
8	32128-20	4	Nut-HF



## Optional Tools

Ref.	Part Number	Qty.	Description
1	98-1852	1	Gauge Bar ASM
1:2	32122-54	2	Screw-Head, Truss
1:3	32103-3	2	Nut-Wing
1:4	98-7976	1	Decal-Bar, Gauge
2	29-9100	1	Brush And Handle ASM
2:1	36-4310	1	Brush
2:3	98-3206	1	Decal
2:4	29-9080	1	Handle
2:5	2410-18	1	Cap-Plastic
3	TOR4074	1	Adapter-Drive, Reel ●
4	115-0803	1	Roller Rebuild Tool Kit
4:1	115-0852	1	Tool-Inner Seal
4:2	107-8133	1	Washer-Flat
4:3	115-0853	1	Tool-Bearing/Outer Seals
5	117-0975	1	Tool-Installation, Reel Bearing

● Obtain directly from OTC, 2013 4th Street, Owatonna, MN 55060, 1-800-533-0492 (in Minnesota and Canada 1-507-455-7050) Fax: 507-455-7011.

# Attachments and Accessories

## For 03180 5-Blade 27in DPA Cutting Unit Reelmaster 3100-D Series Traction Unit

<b>Product Name</b>	<b>Model/Part</b>
27 inch Verticutter .....	03184
Basket Kit .....	03185
27 inch Rear Roller Brush Kit.....	03186
Turf Evaluator .....	04399
Groomer/RRB Bearing and Seal Kit.....	110-4086
Kickstand .....	110-4088-03
High Height-of-Cut Kit.....	110-9600
27 inch Bedknife-Edgemax.....	112-8910
Roller Rebuild Kit.....	114-5430
Rear Roller Scraper Kit.....	114-9368
Wiehle Scraper ASM .....	114-9372-03
Comb/Scraper Kit .....	114-9376
Shoulder Scraper ASM.....	114-9381-03
Full Front Roller ASM (3-inch dia).....	114-9383
Full Front Roller Scraper ASM (3-inch dia).....	114-9386-03
Bedknife-HD .....	114-9390
Roller Rebuild Tool Kit.....	115-0803
Brush-Roller (High HOC) .....	115-0838
Reel Bearing Installation Tool .....	117-0975
Plastic Shoulder Roller ASM.....	119-0630
Roller Tipper Kit.....	119-0635
Fixed Plate (High HOC) .....	119-0646-03
Trim/Heavy-Duty Collar Kit .....	119-0649
Bedknife-Extended, Low HOC .....	120-1641
Brush and Handle Kit.....	29-9100
Gauge Bar Kit .....	98-1852
Reel Drive Adapter .....	TOR4074

**Notes:**



**Count on it.**