



Count on it.

Parts Catalog

21in Heavy-Duty

Recycler®/Rear Bagger Lawn Mower

Model No. 22196—Serial No. 311000001 and Up

Ordering Replacement Parts

To order replacement parts, please supply the part number, the quantity, and the description of each part desired.

Understanding Reference Numbers

Each identified part in an illustration has a reference number. The reference number for a part also appears in the parts list, along with other information about the part.

This catalog uses two special reference number formats, one to indicate parts in a service assembly and another to indicate the quantity of a given part in an illustration.

Service Assembly Reference Numbers

Parts in service assemblies have reference numbers in the form a:b. The a represents the reference number of the entire service assembly and the b represents a sequential number unique to each part within the service assembly.

For example, a wheel assembly might be identified by reference number 6, the tire by 6:1, the valve by 6:2, and the wheel by 6:3. When you order the assembly identified by reference number 6, you receive all parts identified by reference numbers 6:1, 6:2, and 6:3. However, you may also order any part individually. Reference numbers of this type appear in illustration and in parts lists.

Reference Numbers Indicating Quantity

In an illustration, if a reference number indicates more than one part, the reference number has the form nX y. The n represents the quantity of the part, the X is the multiplication symbol, and the y represents the reference number.

For example, in an illustration, the reference number 2X 37 means that two of the parts identified by reference number 37 are indicated.

List of Abbreviations

AR: as required

ASM: assembly

BBC: blade brake control

BHTF: button head thread forming

CARR: carriage

CCW: counter clockwise

CW: clockwise

DEG: degrees

DPA: Dual Point Adjustment

ECM: electronic control module

EXT: external

FH: flat head

GA: gauge

HD: heavy-duty

HF: hex flange

HH: hex head

HHF: hex head flange

HHFTF: hex head flange thread forming

HJ: hex jam

HLH: hex lag head

HOC: height-of-cut

HSBH: hex socket button head

HSFH: hex socket flat head

HSH: hex socket head

HWH: hex washer head

HWTF: hex washer head thread forming

HYD: hydraulic

LH: left hand

LP: Liquid Propane

NI: nylon insert

NPTF: national pipe thread fine

PFH: phillips flat head

PPH: phillips pan head

PPHTF: phillips pan head thread forming

PRH: phillips round head

PTH: phillips truss head

PTO: power-take-off

RH: right hand

ROPS: roll-over protection system

RRB: rear roller brush

SFH: slotted fillister head

SHH: slotted hex head

SHWH: slotted hex washer head

SPH: slotted pan head

SQH: square head

SRH: slotted round head

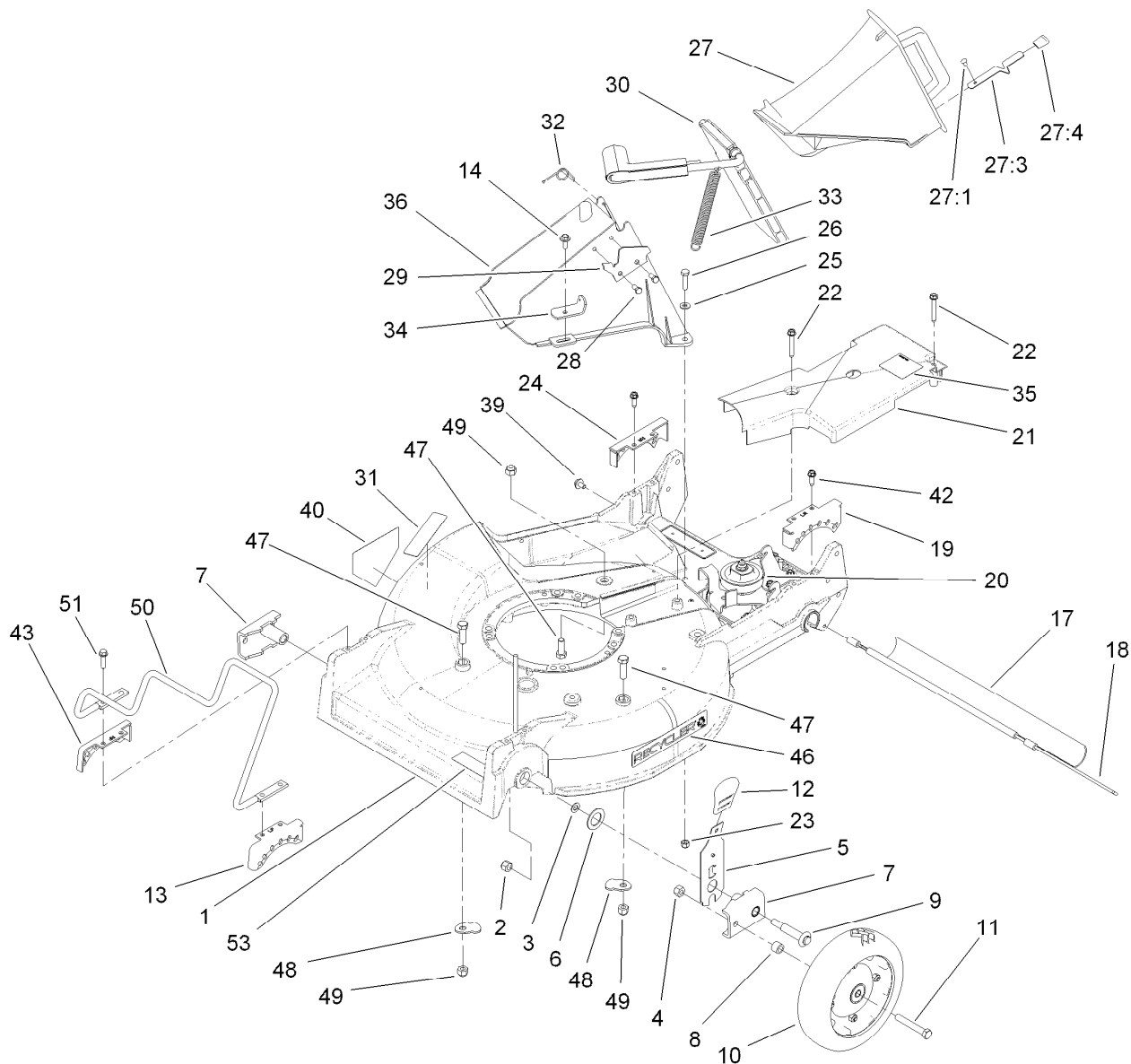
STD: standard

TAP: self tapping

TTH: torx truss head

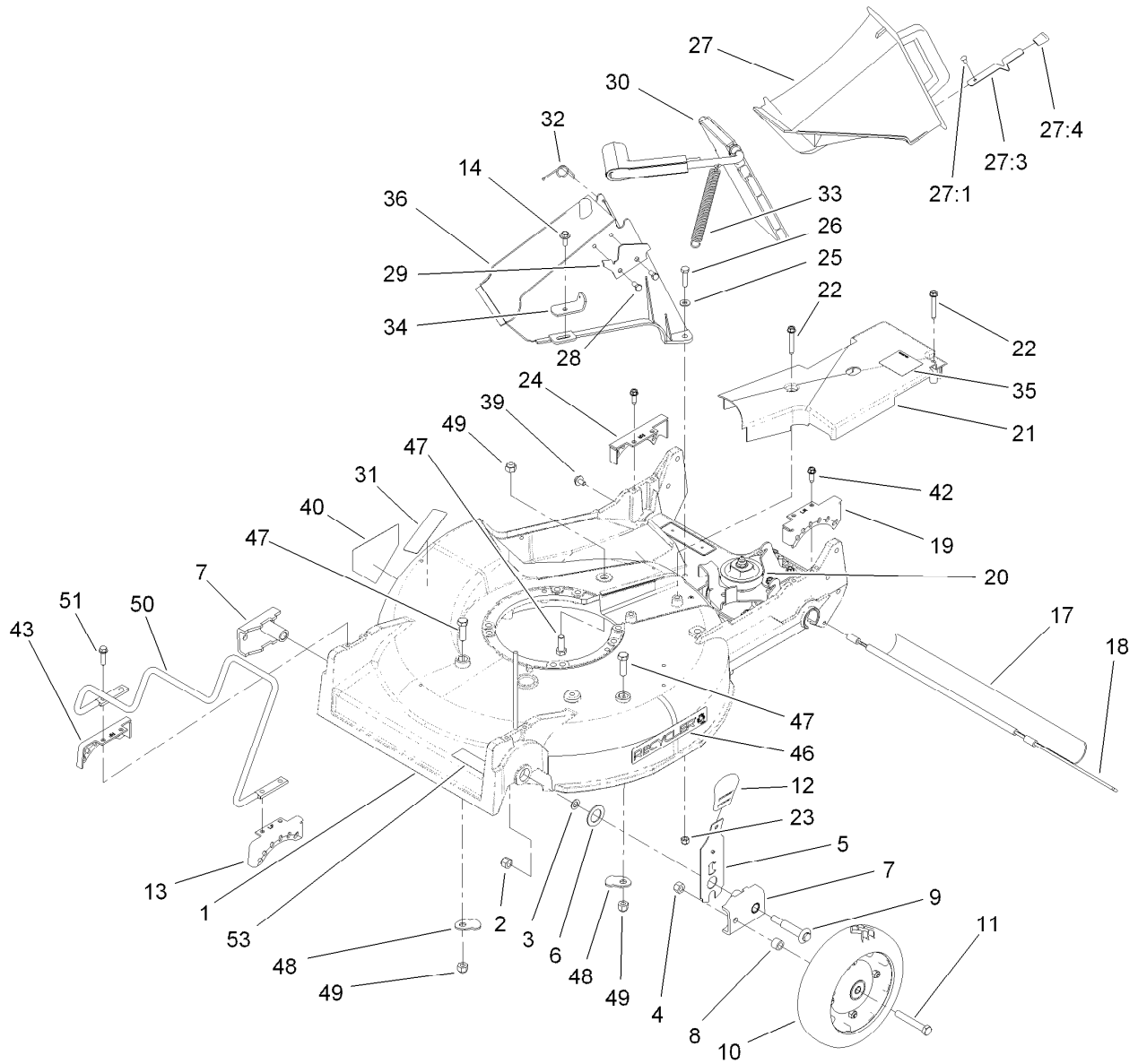
Contents

Housing, Chute and Wheel Assembly.....	4
Housing Assembly No. 98-7146	6
Front Wheel and Tire Assembly No. 100-2870	7
Blade Brake Clutch Assembly	8
Engine and Fuel Tank Assembly	10
Handle Assembly	11
Control Panel Assembly	12
Gear Case and Axle Assembly	13
Rear Wheel Assembly No. 100-2860	14
Grass Bag Assembly No. 106-0975	15
Attachments and Accessories	16



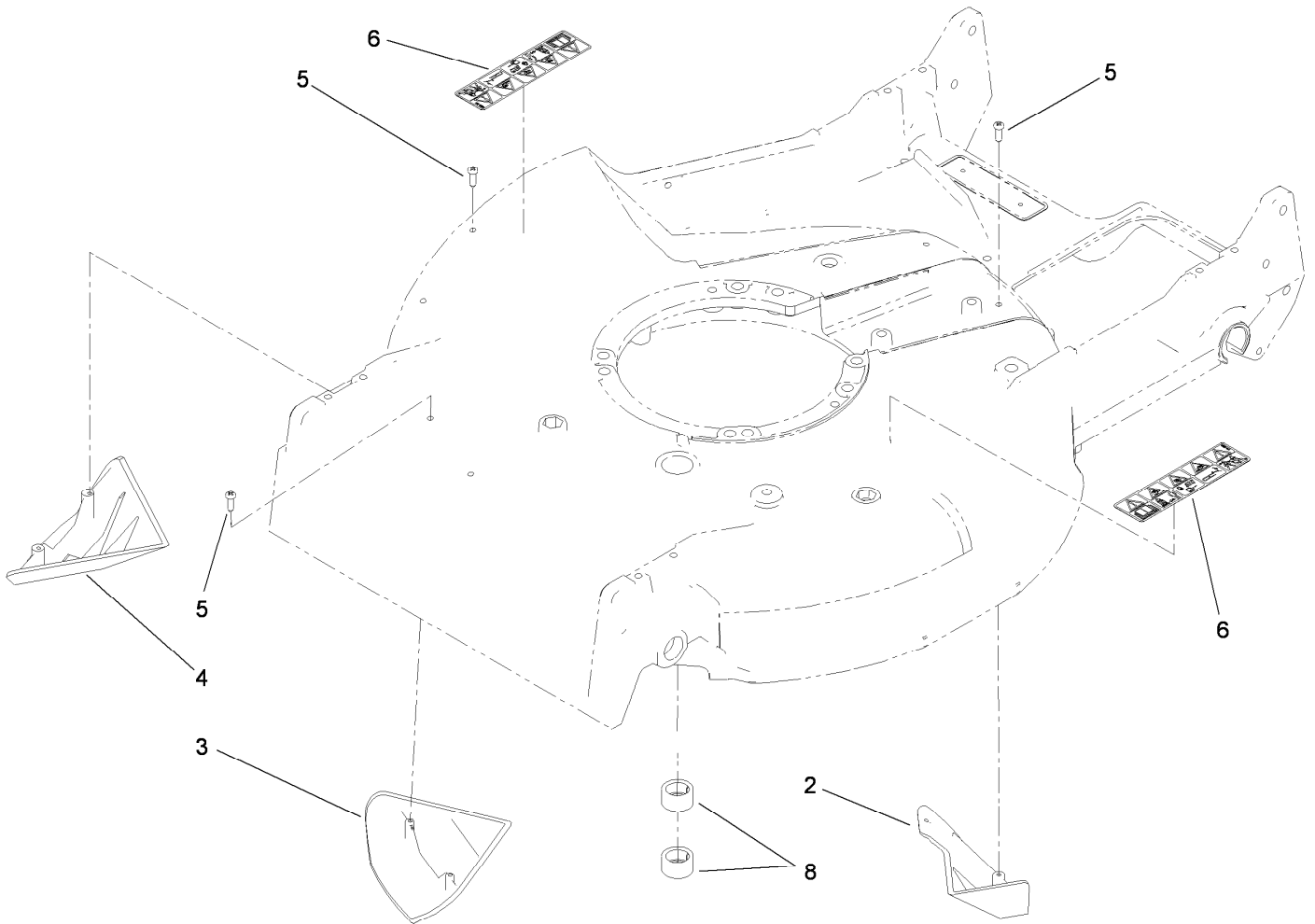
Housing, Chute and Wheel Assembly

Ref.	Part Number	Qty.	Description	Ref.	Part Number	Qty.	Description
1	98-7146	1	Housing	24	49-8750	1	Quadrant-Rear, RH
2	3296-6	2	Nut-Lock	25	3256-22	2	Washer-Flat
3	40-1940	2	Washer	26	321-8	2	Screw-HH
4	32152-2	2	Nut-Lock, Cone	27	77-0500	1	Discharge Plug ASM
5	119-2323	2	Front Spring Arm ASM	27:1	3295-35	1	Rivet-Head, Flat
6	257-3	2	Washer-Thrust	27:3	76-4640	1	Latch-Plug, Discharge
7	61-8300	2	Arm-Pivot, Front	27:4	76-4650	1	Grip-Latch
8	52-2480	2	Spacer-Wheel	28	46-8090	2	Screw-Plastite
9	114-3468	2	Screw-Shoulder	29	93-3154	1	Latch-Plate
10	100-2870	2	Wheel And Tire ASM	30	93-7351	1	Discharge Door ASM
11	323-12	2	Screw-HH	31	117-2718	1	Decal-Arrester, Spark
12	110-0549	2	Knob-HOC	32	80-3770	1	Retainer-Door
13	49-8760	1	Quadrant-Front, LH	33	76-4660	1	Spring-Door
14	46-6811	1	Screw-HWH	34	71-9350	1	Bracket-Spring
17	112-9989	1	Shield-Trailing	35	52-2620	1	Label-Grease
18	33-3208	1	Rod-Shield	36	82-9152	1	Tunnel-Discharge
19	49-8740	1	Quadrant-Rear, LH	39	46-6810	1	Screw And Washer ASM
20	74-1860	1	Gear Case ASM	40	94-8072	1	Decal-Danger
21	74-1770	1	Cover-Belt	42	49-2040	4	Screw-HWHTF
22	117-5248	2	Screw-HWH, Thrd Form	43	49-8770	1	Quadrant-Front, RH
23	3296-42	2	Nut-Lock, NI	46	106-0689	1	Decal



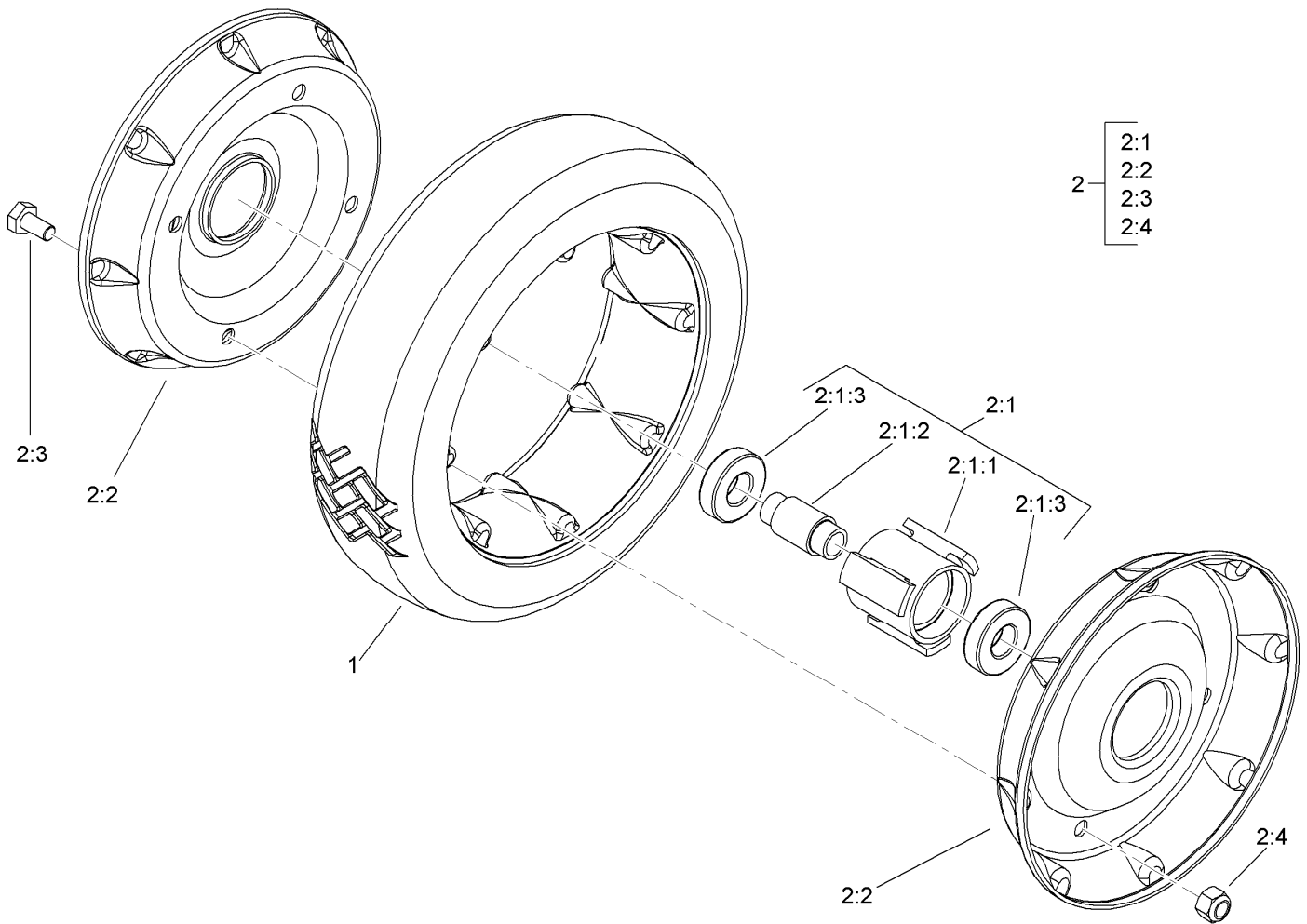
Housing, Chute and Wheel Assembly (continued)

<i>Ref.</i>	<i>Part Number</i>	<i>Qty.</i>	<i>Description</i>	<i>Ref.</i>	<i>Part Number</i>	<i>Qty.</i>	<i>Description</i>
47	323-6	3	Screw-HH	50	109-7638	1	Guard-Engine
48	84-8930	2	Shield-Retainer	51	32144-86	4	Screw-HWHTF
49	3296-39	3	Nut-Lock, NI	53	68-7410	1	Decal-Blade



Housing Assembly No. 98-7146

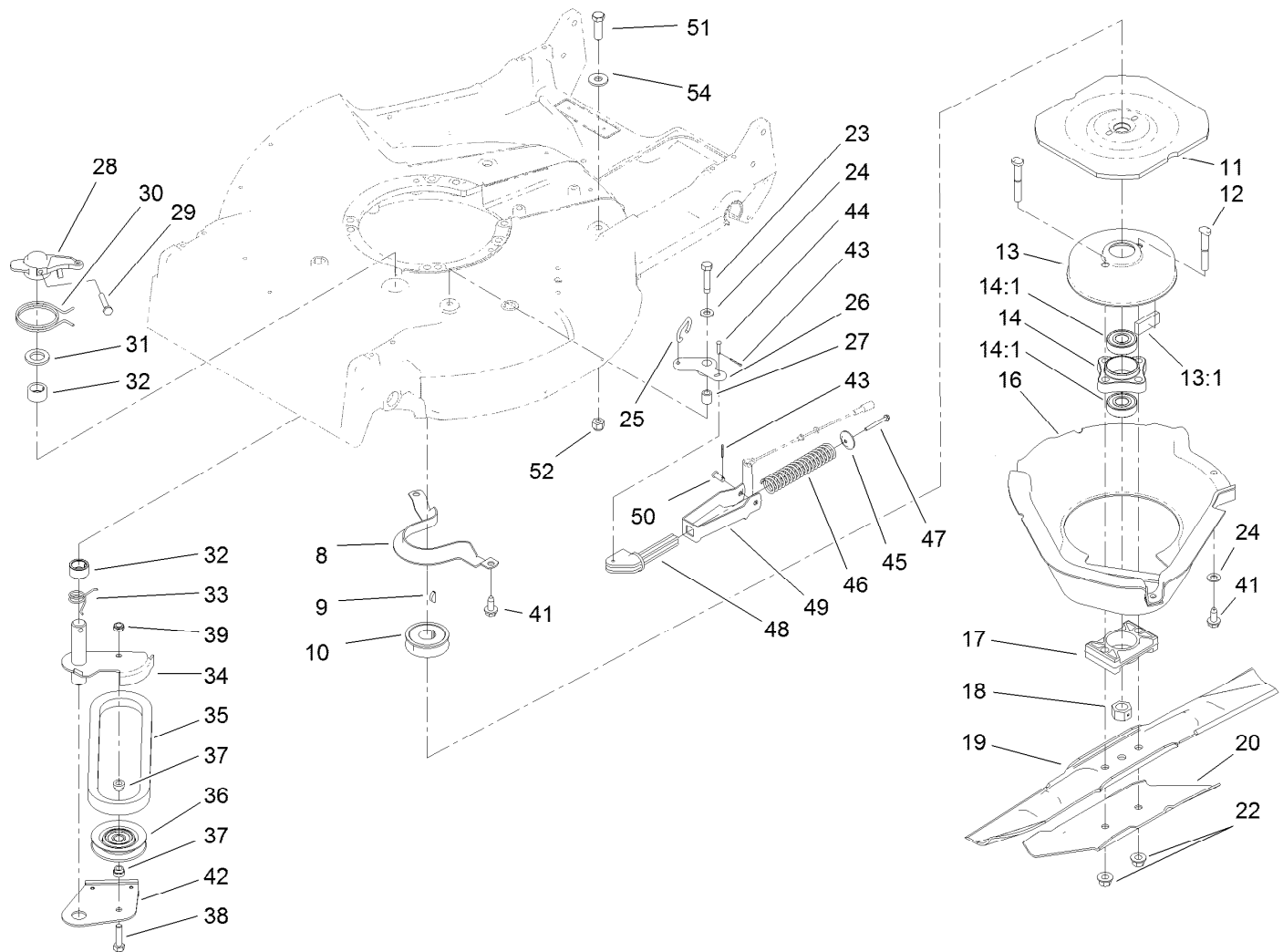
<i>Ref.</i>	<i>Part Number</i>	<i>Qty.</i>	<i>Description</i>
2	92-1750	1	Kicker-Rear
3	92-1720	1	Kicker-Front
4	92-1730	1	Kicker-RH
5	32144-111	6	Screw-PPH
6	110-4978	2	Decal-Danger
8	68-9780	2	Bearing



Front Wheel and Tire Assembly No. 100-2870

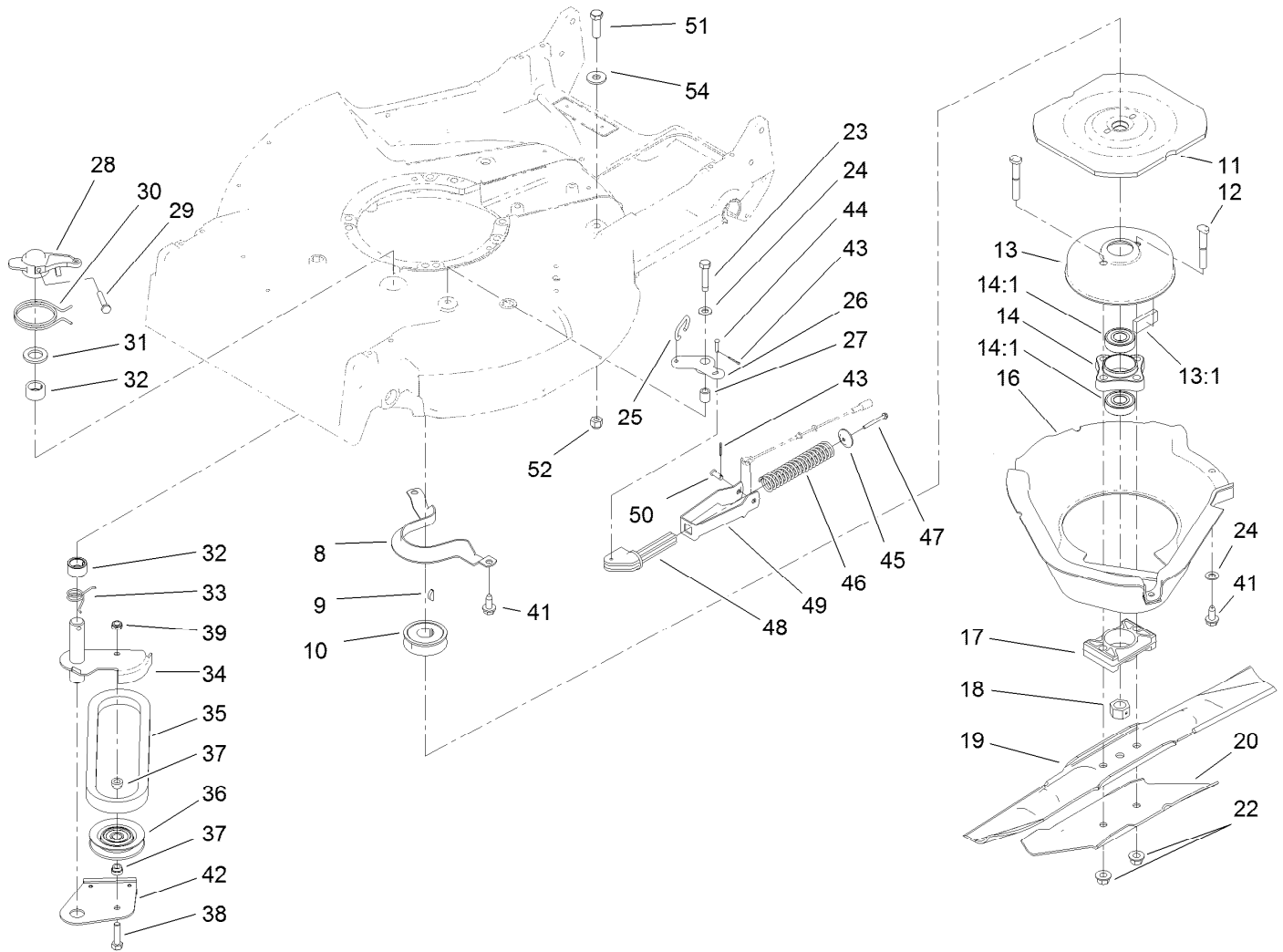
<i>Ref.</i>	<i>Part Number</i>	<i>Qty.</i>	<i>Description</i>
1	53-7740	1	Tire
2		1	Wheel ASM ●
2:1		1	Hub And Bearing ASM ●
2:1:1	52-2410	1	Hub-Bearing
2:1:2	52-2440	1	Spacer-Bearing
2:1:3	52-2450	2	Bearing-Wheel
2:2	53-7780-06	2	Plate-Wheel, Half
2:3	321-2	4	Screw-HH
2:4	3296-42	4	Nut-Lock, NI

● Not serviced separately



Blade Brake Clutch Assembly

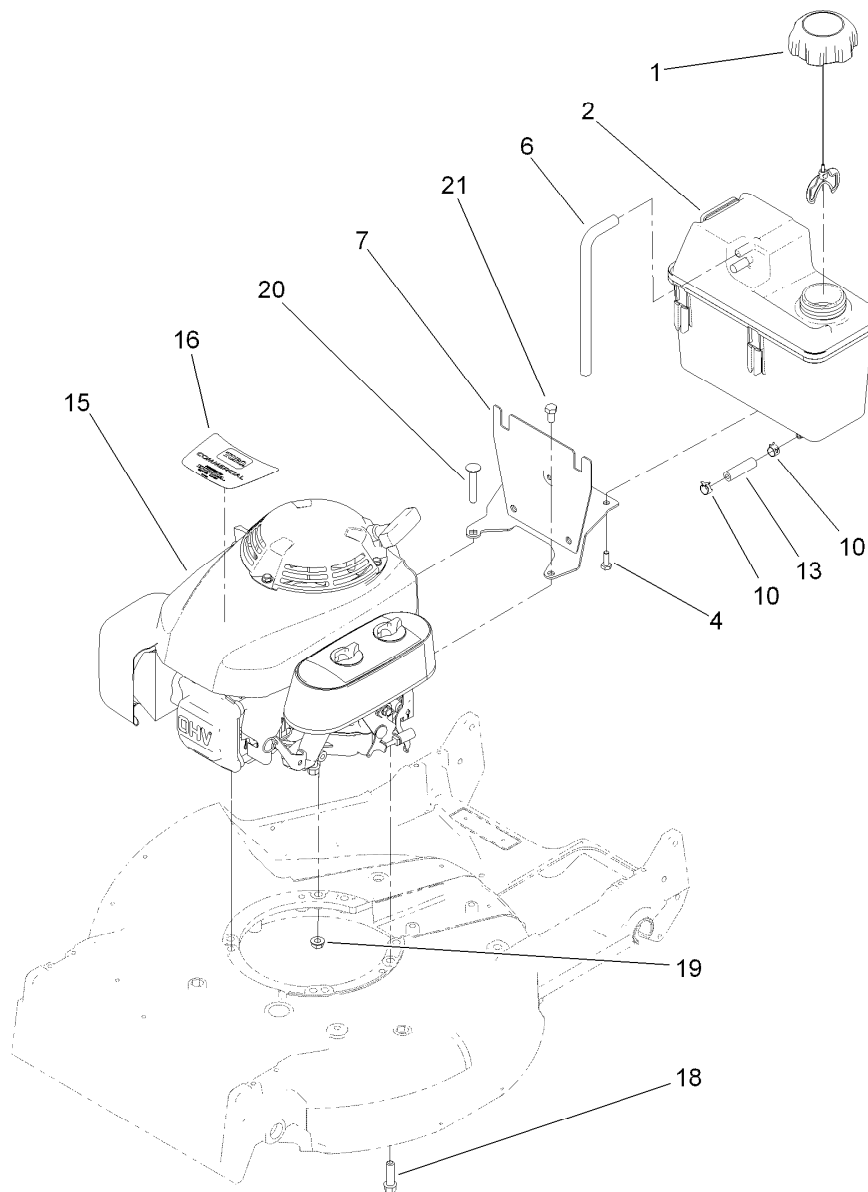
Ref.	Part Number	Qty.	Description	Ref.	Part Number	Qty.	Description
8	66-0570-03	1	Bracket-Guide, Belt	29	32104-96	1	Screw-HH
9	3257-17	1	Key-Woodruff	30	49-7970	1	Spring-Torsion
10	56-6180	1	Pulley-Driver	31	70-1160	1	Washer
11	56-6160-03	1	Flywheel-BBC	32	68-9780	2	Bearing
12	42-3190	2	Bolt-Blade	33	85-6880	1	Spring-Torsion
13	94-9431	1	Brake Drum ASM	34	84-9130	1	Arm-Idler
13:1	52-3480	2	Dampener-Vibration	35	42-0884	1	V-Belt
14	42-6890	1	Hub ASM	36	117-5299	1	Pulley-Idler
14:1	100-1048	2	Bearing-Ball	37	46-5631	2	Spacer-Pulley, Idler
16	46-5693	1	Shield	38	322-6	1	Screw-HH
17	107-4275	1	Spacer-Blade	39	3296-47	1	Nut-Lock, NI
18	603164	1	Nut-Blade	41	32144-70	3	Screw-HWHTF
19	91-2256-03	1	Blade-21 Inch	42	84-9180	1	Brake Plate ASM
20	91-2255-03	1	Stiffener-Blade	43	3272-1	2	Pin-Cotter
22	54-9190	2	Nut-Lock	44	84-9050	1	Pin-Spring
23	32104-107	1	Screw-HH	45	65-5280	1	Retainer-Spring
24	3256-23	2	Washer-Flat	46	84-9100	1	Spring
25	49-2810	1	Link-Control	47	46-7040	1	Screw-HWHTF
26	49-7960	1	Bellcrank	48	106-0842	1	Guide-Spring
27	49-7950	1	Sleeve-Bellcrank	49	107-4087-03	1	Bracket-Spring
28	49-2820	1	Lever	50	84-9040	1	Pin-Cable



Blade Brake Clutch Assembly (continued)

<i>Ref.</i>	<i>Part Number</i>	<i>Qty.</i>	<i>Description</i>
51	323-7	1	Screw-HH

<i>Ref.</i>	<i>Part Number</i>	<i>Qty.</i>	<i>Description</i>
52	3296-39	1	Nut-Lock, NI
54	80-6990	1	Washer-Hardened

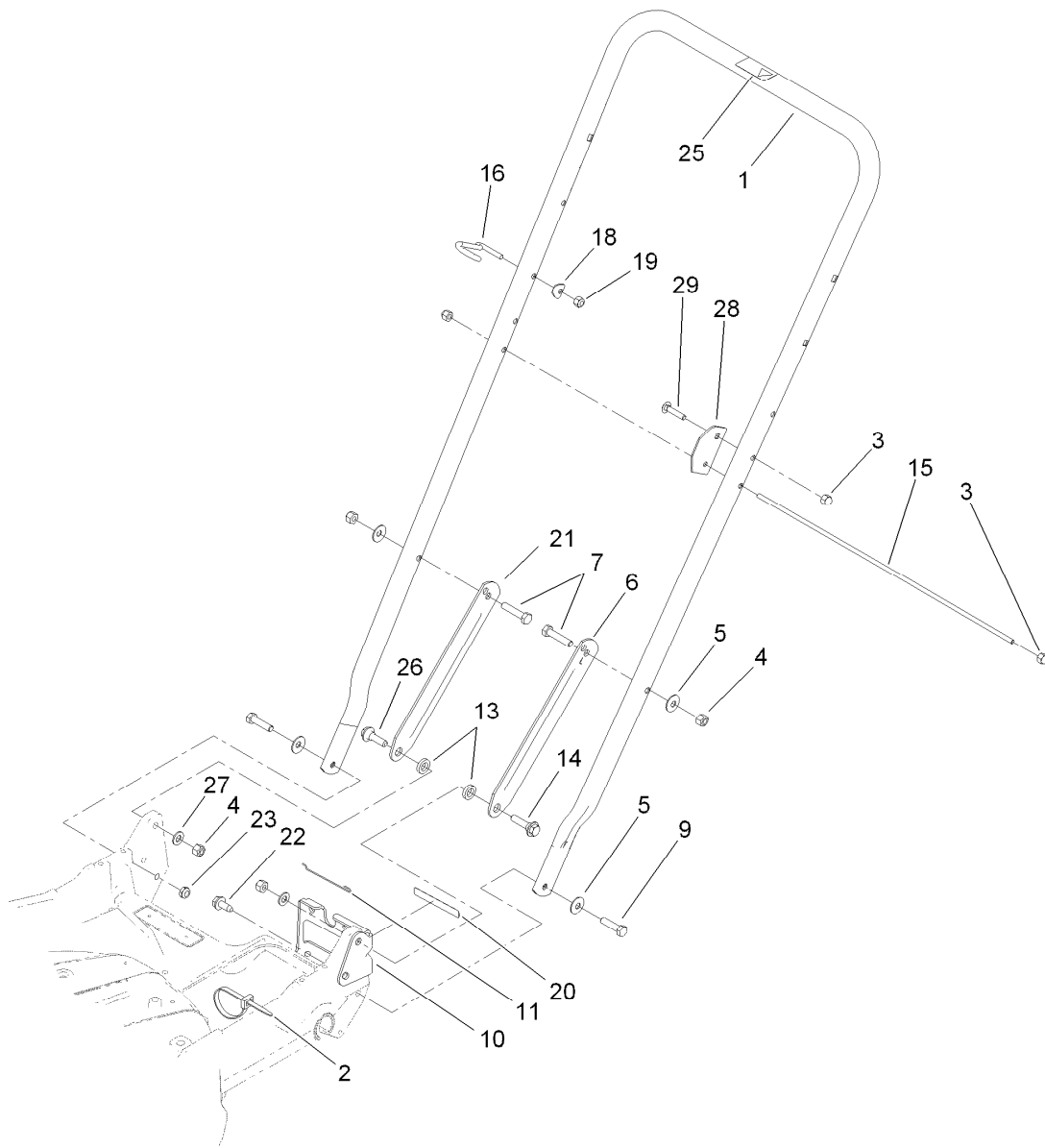


Engine and Fuel Tank Assembly

Ref.	Part Number	Qty.	Description
1	109-6776	1	Cap-Ratchet, Tethered
2	114-0280	1	Tank-Fuel
4	46-8091	2	Screw-HWH
6	115-0962	1	Hose-Vent, Canister
7	119-7837-03	1	Tank Mount ASM
10	2412-98	2	Clamp
13	119-7856	1	Hose-Fuel
15		1	Engine-Honda, BBC Gxv160 ● ■
16	112-9974	1	Decal-Engine, Honda
18	103-2678	3	Screw-Shoulder
19	3230-6	1	Screw-CARR
20	32128-25	1	Nut-HF
21	3210-2	1	Screw-HH

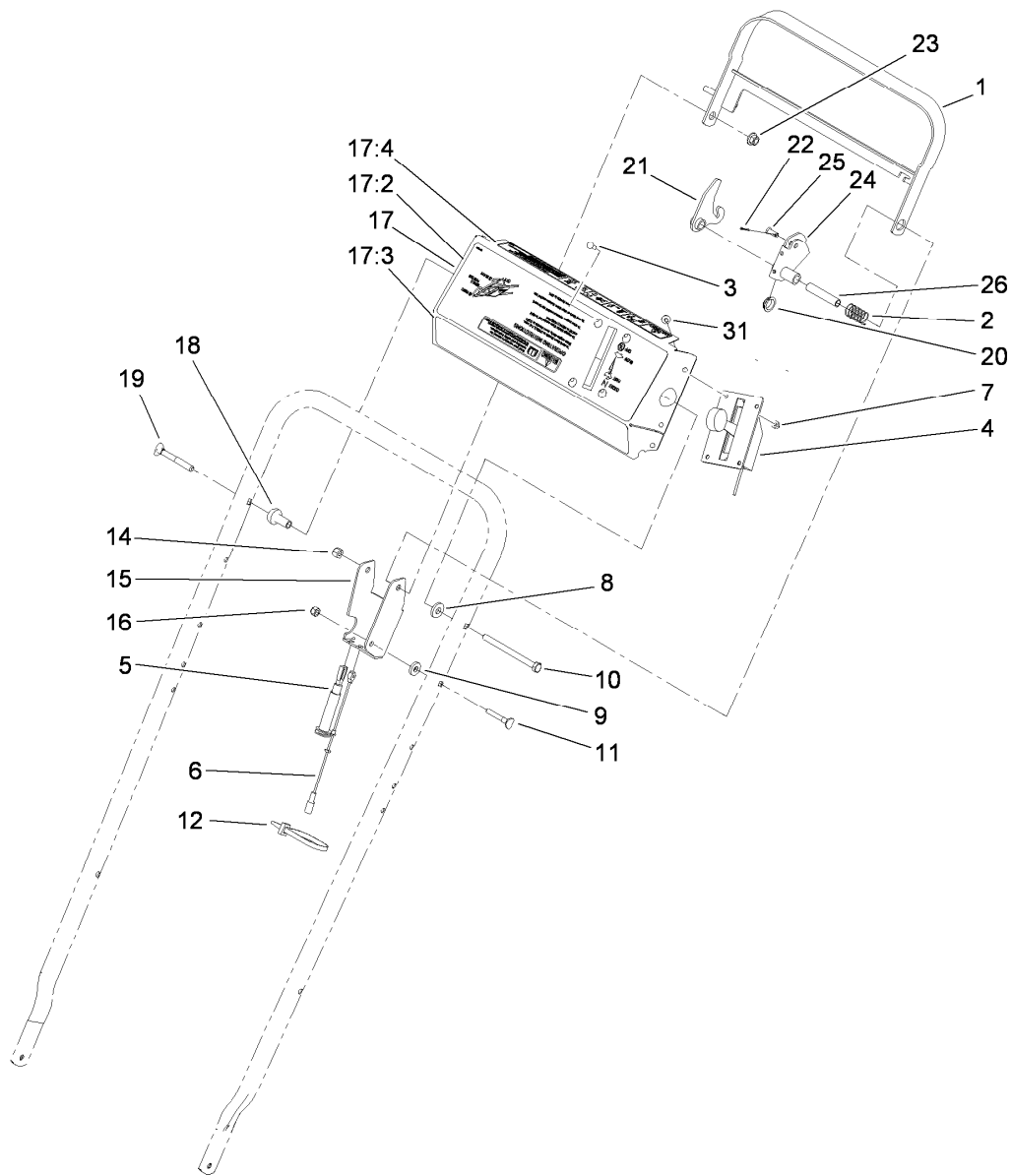
● Not serviced separately

■ Obtain parts from www.honda-engines.com



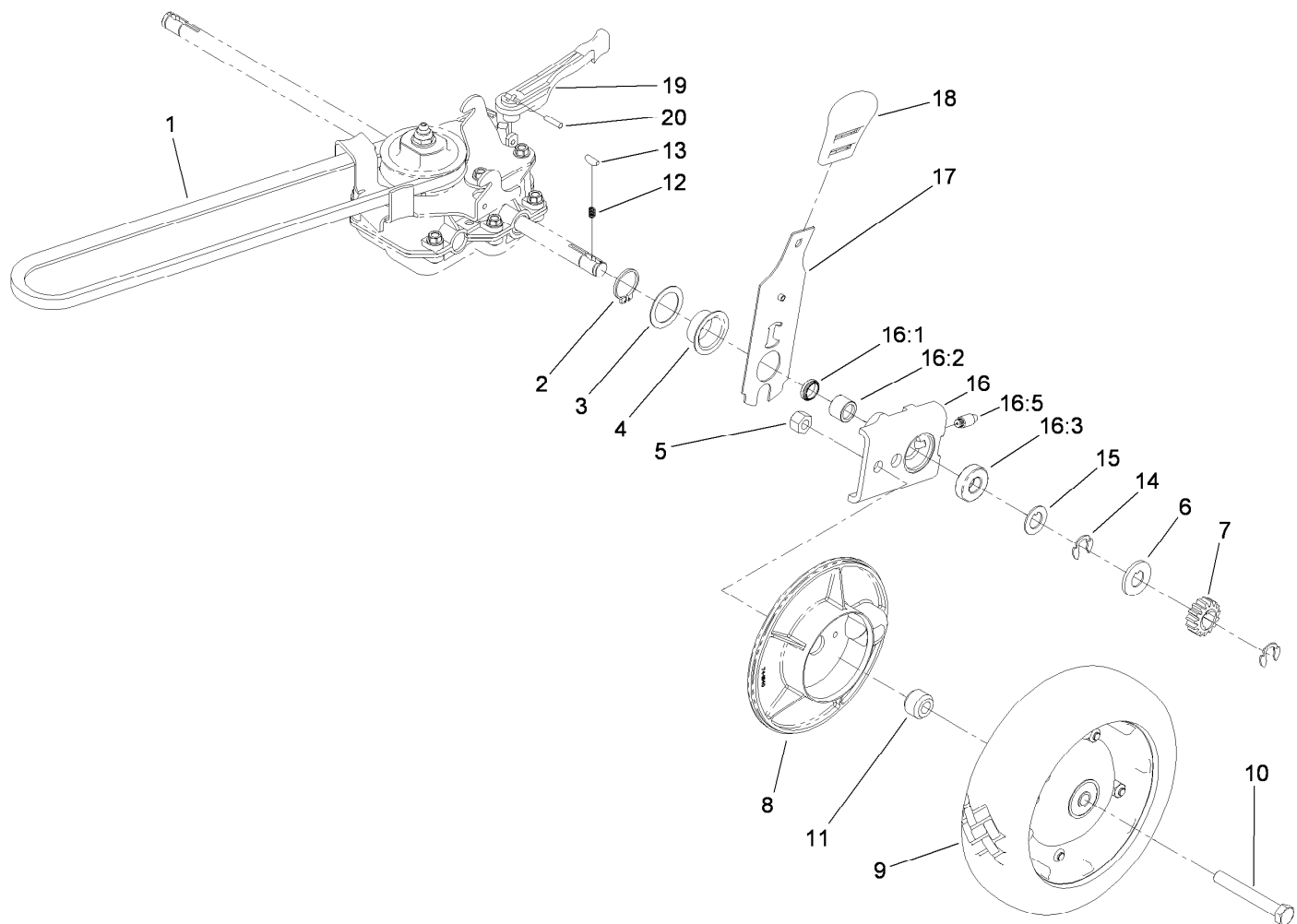
Handle Assembly

<i>Ref.</i>	<i>Part Number</i>	<i>Qty.</i>	<i>Description</i>	<i>Ref.</i>	<i>Part Number</i>	<i>Qty.</i>	<i>Description</i>
1	98-2385-03	1	Handle	15	48-2810	1	Rod-Support, Bag
2	3290-378	1	Tie-Cable	16	114-2775	1	Guide-Rope
3	32111-7	3	Nut-Cap	18	3-7501	1	Washer
4	3296-29	4	Nut-Lock, NI	19	3296-42	1	Nut-Lock, NI
5	3290-456	4	Washer-Belleville	20	74-1970	1	Decal-Position, Gear
6	100-3298-03	1	Latch-Handle, LH	21	100-3297-03	1	Latch-Handle, RH
7	322-7	2	Screw-HH	22	32144-70	1	Screw-HWHTF
9	322-6	2	Screw-HH	23	3296-47	2	Nut-Lock, NI
10	74-1741	1	Bracket-Adjustment, Traction	25	98-4387	1	Decal-Protection, Ear
11	46-7030	1	Retainer-Cable	26	27-7211	1	Screw-Shoulder
13	3-3287	2	Spacer-Latch, Handle	27	3256-23	2	Washer-Flat
14	27-7210	1	Screw-Shoulder	28	104-1326	1	Plate-Aligning, Bag
				29	3229-3	1	Screw-CARR



Control Panel Assembly

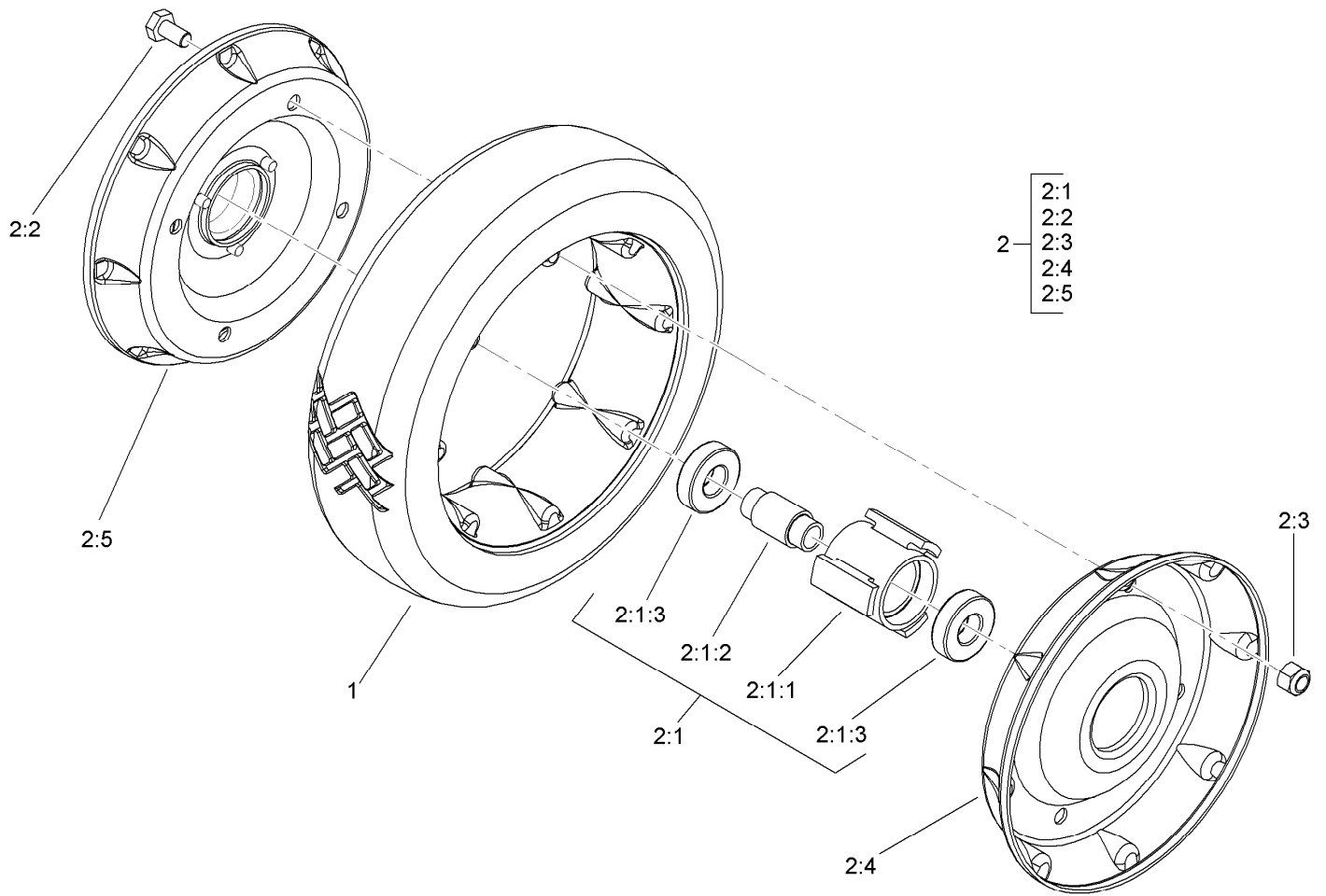
<i>Ref.</i>	<i>Part Number</i>	<i>Qty.</i>	<i>Description</i>	<i>Ref.</i>	<i>Part Number</i>	<i>Qty.</i>	<i>Description</i>
1	84-8940-03	1	Bar-Control	17	14-7709	1	Panel ASM
2	85-6750	1	Spring-Control	17:2	107-4098	1	Decal-Panel
3	3250-12	4	Screw-PPH	17:3	106-0771	1	Decal-Panel
4	117-3543	1	Control-Throttle	17:4	112-8736	1	Decal-Danger Panel
5	84-9120	1	Cable-Traction	18	49-1631	1	Spacer-Support
6	84-9110	1	Cable-Clutch	19	17-9427	1	Screw
7	3296-2	4	Nut-Lock, NI	20	86-9320	1	Bushing-Flange
8	71-9310	1	Spacer	21	84-9000	1	Lever-Traction
9	71-9320	1	Spacer	22	3272-1	1	Pin-Cotter
10	322-19	1	Screw-HH	23	3296-58	1	Nut-Lock, NI
11	46-6430	1	Screw-Handle	24	84-8990	1	Lever-BBC
12	3290-378	1	Tie-Cable	25	84-9040	1	Pin-Cable
14	3296-29	1	Nut-Lock, NI	26	84-9030	1	Spacer-Bracket, Control
15	92-1778-03	1	Bracket-Control	31	32104-76	6	Screw
16	3296-42	1	Nut-Lock, NI				



Gear Case and Axle Assembly

<i>Ref.</i>	<i>Part Number</i>	<i>Qty.</i>	<i>Description</i>	<i>Ref.</i>	<i>Part Number</i>	<i>Qty.</i>	<i>Description</i>
1	36-8070	1	V-Belt	14	32151-68	4	Ring-Retaining
2	32151-36	2	Ring-Retaining	15	49-7700	2	Washer-Thrust, Outer
3	74-1810	2	Washer	16	74-1851	2	Pivot Arm ASM
4	48-2170	2	Cap-End	16:1	47-6730	1	Seal-Oil
5	32152-2	2	Nut-Lock, Cone	16:2	117-3500	1	Bearing-Caged Needle Roller
6	62-3830	2	Washer-Thrust, Outer	16:3	52-2450	1	Bearing-Wheel
7	39-9160	2	Gear-Pinion	16:5	92-6316	1	Zerk
8	74-1640	2	Cover-Wheel	17	119-2324	2	Rear Spring Arm ASM
9	100-2860	2	Wheel And Tire ASM	18	110-0549	2	Knob-HOC
10	323-13	2	Screw-HH	19	74-1960	1	Lever-Shift
11	74-1650	2	Spacer-Cover, Wheel	20	32121-99	1	Pin-Coil
12	39-9650	2	Spring-Compression	99	106-0975	1	Grass Bag ASM ●
13	612066	2	Key				

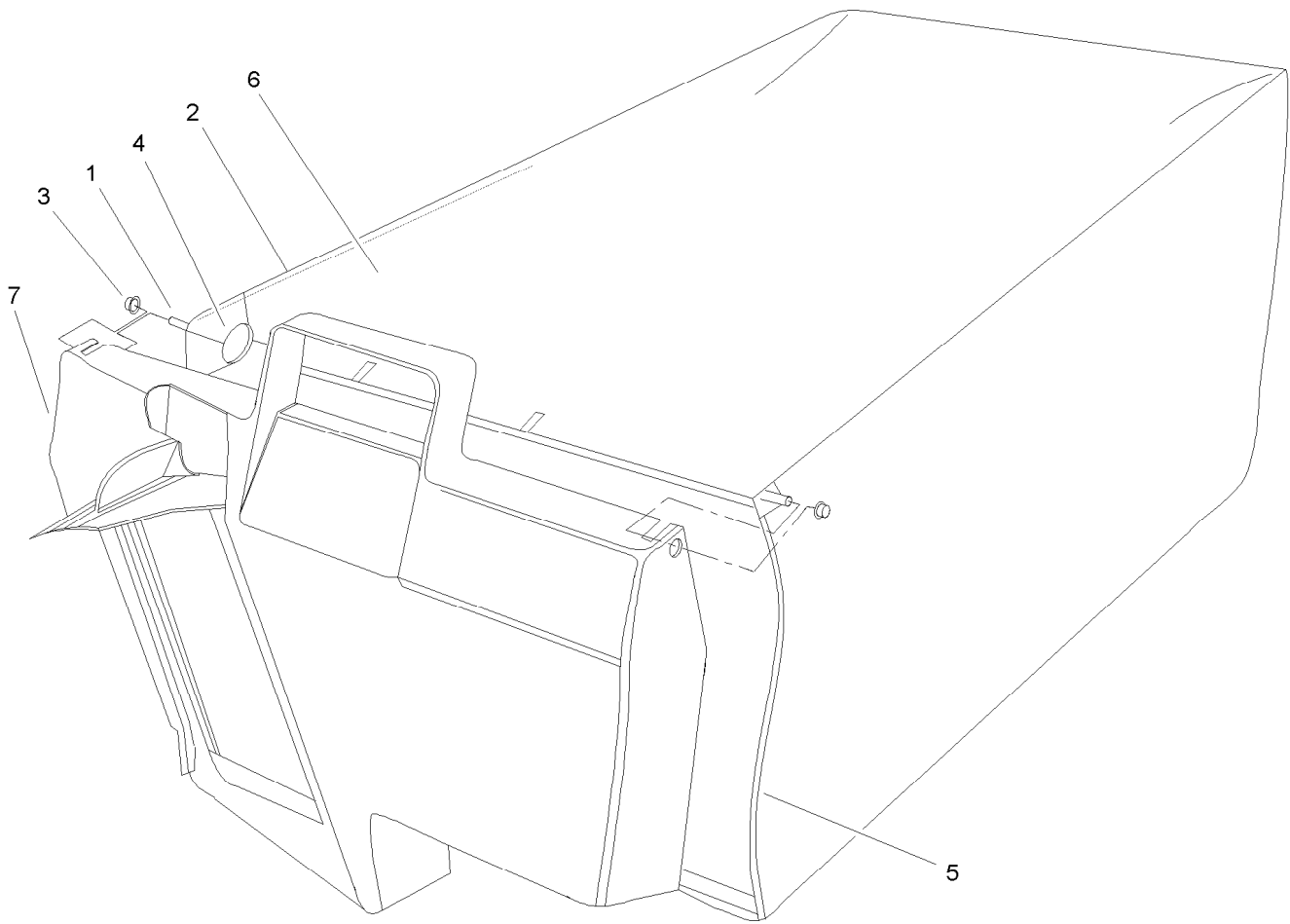
● Not illustrated



Rear Wheel Assembly No. 100-2860

Ref.	Part Number	Qty.	Description
1	53-7740	1	Tire
2		1	Wheel ASM ●
2:1		1	Hub And Bearing ASM ●
2:1:1	52-2410	1	Hub-Bearing
2:1:2	52-2440	1	Spacer-Bearing
2:1:3	52-2450	2	Bearing-Wheel
2:2	321-2	4	Screw-HH
2:3	3296-42	4	Nut-Lock, NI
2:4	53-7780-06	1	Plate-Wheel, Half
2:5	92-4957-06	1	Wheel Half And Gear ASM

● Not serviced separately



Grass Bag Assembly No. 106-0975

<i>Ref.</i>	<i>Part Number</i>	<i>Qty.</i>	<i>Description</i>
1	33-4820	1	Hinge-Door, Bag
2	42-4030	1	Frame-Bag, Upper
3	3290-422	2	Nut-Push
4	36-6910	2	Spring
5	42-4020	1	Frame-Bag
6	106-0926	1	Bag-Grass
7	48-2840	1	Door-Bag, Grass

Attachments and Accessories

For 22196 21in Heavy-Duty Recycler/Rear Bagger Lawn Mower

Product Name	Model/Part
Blade-Atomic, 21in	104-1302
Bag-Large, Walk Behind (Toro).....	490-7315
Bag-Walk Behind (Toro).....	490-7318
Bag-Large, Walk Behind (No Logo)	490-7322
Bag-Walk Behind (No Logo)	490-7325
Cover-Lawnmower	490-7462
Side Discharge Kit	59199

Notes:

Notes:

Notes:



Count on it.