



Count on it.

Parts Catalog

Commercial Walk-Behind Mower

**Fixed Deck, Pistol Grip, Hydro Drive with
36in TURBO FORCE® Cutting Unit**

Model No. 39934—Serial No. 311000001 and Up

Ordering Replacement Parts

To order replacement parts, please supply the part number, the quantity, and the description of each part desired.

Understanding Reference Numbers

Each identified part in an illustration has a reference number. The reference number for a part also appears in the parts list, along with other information about the part.

This catalog uses two special reference number formats, one to indicate parts in a service assembly and another to indicate the quantity of a given part in an illustration.

Service Assembly Reference Numbers

Parts in service assemblies have reference numbers in the form a:b. The a represents the reference number of the entire service assembly and the b represents a sequential number unique to each part within the service assembly.

For example, a wheel assembly might be identified by reference number 6, the tire by 6:1, the valve by 6:2, and the wheel by 6:3. When you order the assembly identified by reference number 6, you receive all parts identified by reference numbers 6:1, 6:2, and 6:3. However, you may also order any part individually. Reference numbers of this type appear in illustration and in parts lists.

Reference Numbers Indicating Quantity

In an illustration, if a reference number indicates more than one part, the reference number has the form nX y. The n represents the quantity of the part, the X is the multiplication symbol, and the y represents the reference number.

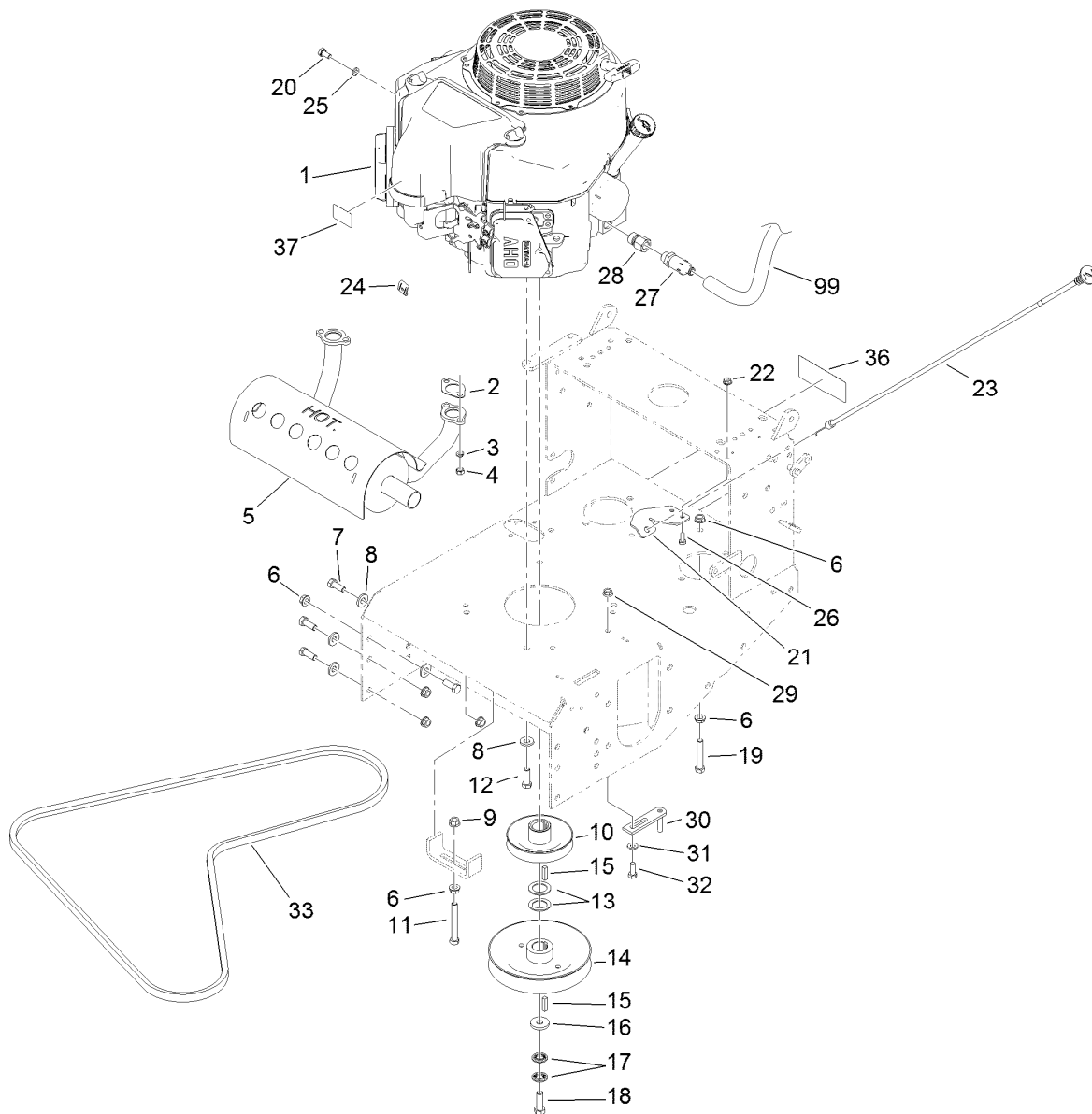
For example, in an illustration, the reference number 2X 37 means that two of the parts identified by reference number 37 are indicated.

List of Abbreviations

AR: as required	HOC: height-of-cut	RRB: rear roller brush
ASM: assembly	HSBH: hex socket button head	SFH: slotted fillister head
BBC: blade brake control	HSFH: hex socket flat head	SHH: slotted hex head
BHTF: button head thread forming	HSH: hex socket head	SHWH: slotted hex washer head
CARR: carriage	HWH: hex washer head	SPH: slotted pan head
CCW: counter clockwise	HWTF: hex washer head thread forming	SQH: square head
CW: clockwise	HYD: hydraulic	SRH: slotted round head
DEG: degrees	LH: left hand	STD: standard
DPA: Dual Point Adjustment	LP: Liquid Propane	TAP: self tapping
ECM: electronic control module	NI: nylon insert	TTH: torx truss head
EXT: external	NPTF: national pipe thread fine	
FH: flat head	PFH: phillips flat head	
GA: gauge	PPH: phillips pan head	
HD: heavy-duty	PPHTF: phillips pan head thread forming	
HF: hex flange	PRH: phillips round head	
HH: hex head	PTH: phillips truss head	
HHF: hex head flange	PTO: power-take-off	
HHFTF: hex head flange thread forming	RH: right hand	
HJ: hex jam	ROPS: roll-over protection system	
HLH: hex lag head		

Contents

Engine and Exhaust Assembly.....	4
Fuel System Assembly	5
Pump Drive and Engine Pulley Assembly	6
Hydraulic Wheel Motor Assembly No. 1-603718.....	7
LH Hydraulic Pump Assembly No. 116-0942.....	8
RH Hydraulic Pump Assembly No. 116-0943	9
Parking Brake Assembly.....	10
Deck Engagement Assembly	11
Hydraulic System Assembly	12
Lower Control Assembly	13
Upper Control Assembly	15
Handle Assembly No. 119-6538	17
Drive Lever Assembly	18
Deck Assembly.....	19
Deck Decal Assembly No. 110-4907.....	20
Deflector Assembly No. 119-6530.....	21
Sheave, Spindle and Blade Assembly	22
Idler Assembly	23
Caster Assembly	24
Attachments and Accessories	25

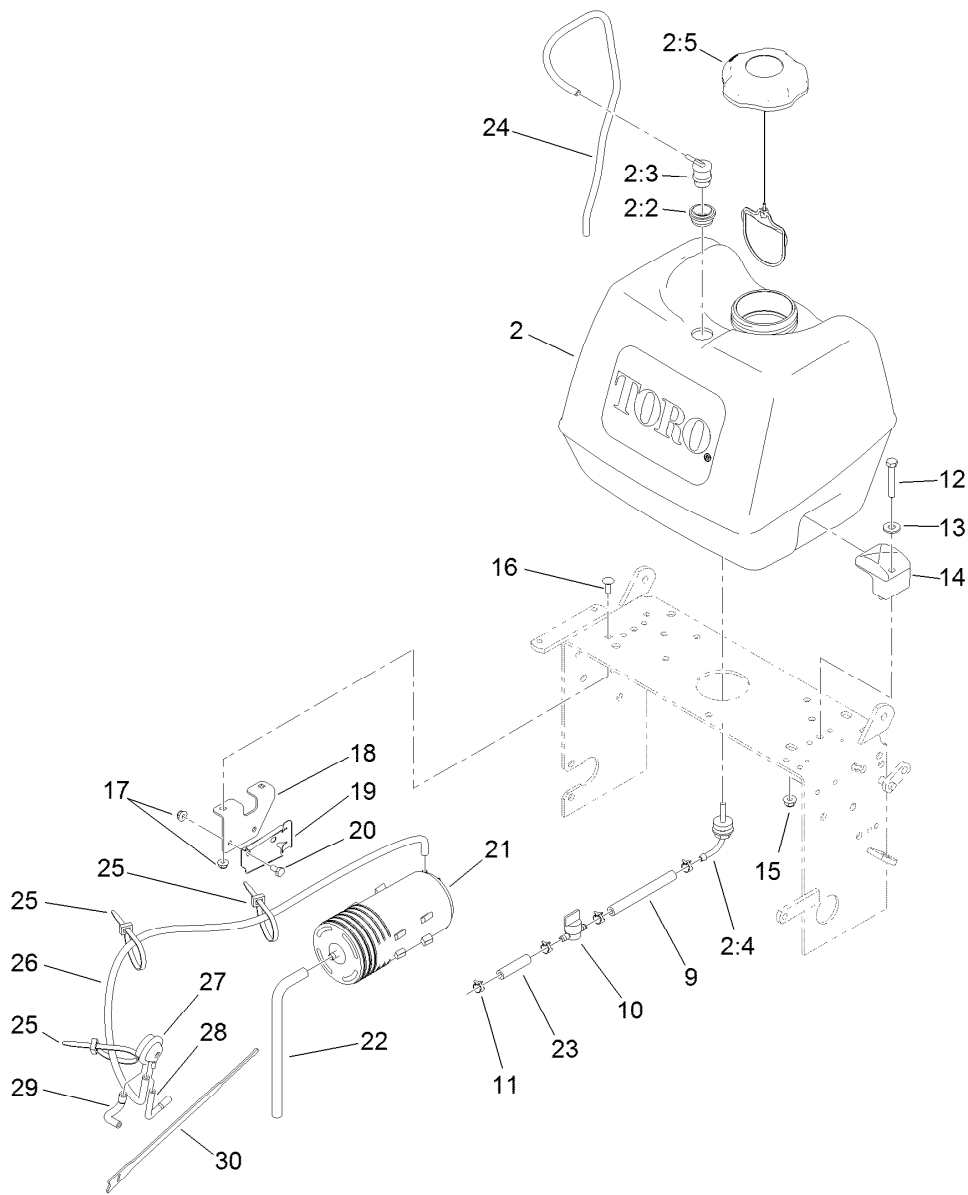


Engine and Exhaust Assembly

Ref.	Part Number	Qty.	Description	Ref.	Part Number	Qty.	Description
1		1	Engine-Kawasaki, Fs481V-As06 ●■	19	323-11	1	Screw-HH
2	1-653313	2	Gasket-Exhaust	20	33114-016	1	Screw-HH
3	114-3550	4	Washer-Lock, Spring	21	103-1797-01	1	Bracket-Cable, Choke
4	114-3549	4	Nut	22	32128-33	2	Nut-HF
5	116-4396	1	Muffler-Horizontal, Offset	23	103-1796	1	Cable-Choke
6	3290-357	11	Nut-HHF, Whiz	24	81-1690	1	Clamp-Cable
7	323-6	8	Screw-HH	25	3253-4	1	Washer-Lock
8	98-5975	12	Washer-Belleville	26	321-3	2	Screw-HH
9	32128-21	1	Nut-HF	27	92-6877	1	Valve-Drain, Oil
10	1-653035	1	Pulley	28	103-1966	1	Adapter
11	323-14	1	Screw-HH	29	32128-20	1	Nut-HF
12	323-7	4	Screw-HH	30	1-322110	1	Guide-Belt
13	1-523157	2	Washer-Spacer	31	1-303334	1	Washer-Spring
14	110-4891	1	Pulley ASM	32	322-4	1	Screw-HH
15	1-807259	2	Key	33	108-6644	1	Belt-V
16	1-373034	1	Washer	36	98-0776	1	Decal-Caution
17	1-603610	2	Washer-Spring	37	103-2076	1	Decal-Caution
18	116-3702	1	Screw-HH	99	103-1964	1	Hose-Drain, Oil

● Not serviced separately

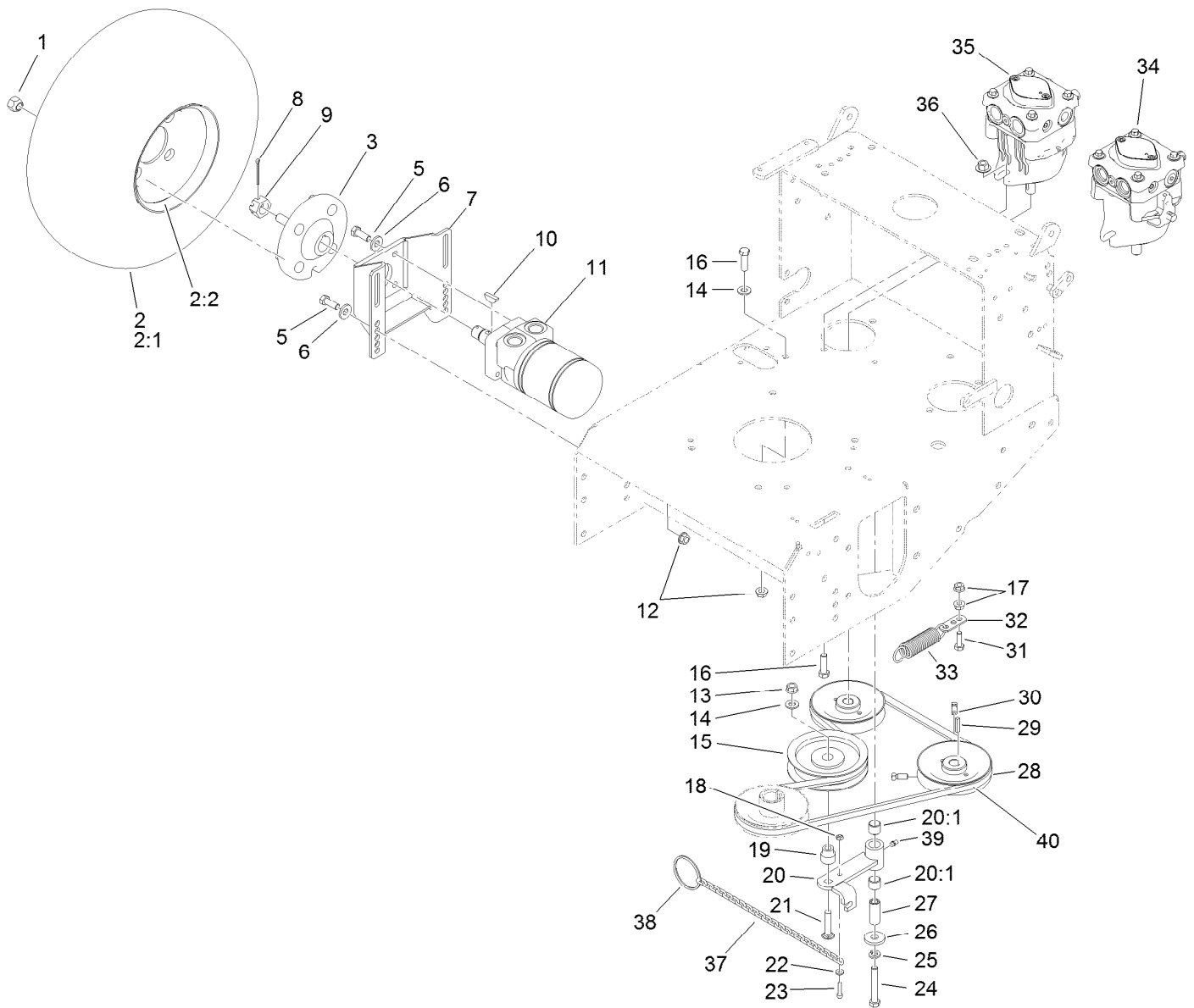
■ Obtain parts from www.kawpowerepc.com



Fuel System Assembly

Ref.	Part Number	Qty.	Description
2	119-7899	1	Fuel Tank ASM
2:2	119-6549	1	Grommet-Valve, Roll-Over
2:3	114-0285	1	Valve-Rollover
2:4	103-2605	1	Fitting-Fuel, Bulkhead
2:5	115-4465	1	Cap-Fuel, Ratcheting
9	109-0650	1	Hose-Fuel
10	1-603770	1	Valve-Fuel
11	2412-98	4	Clamp
12	322-10	2	Screw-HH
13	3256-3	2	Washer-Flat
14	107-4543	2	Clamp
15	104-8300	2	Nut-Flange, NI
16	3229-1	2	Screw-CARR
17	104-7201	4	Nut-HF

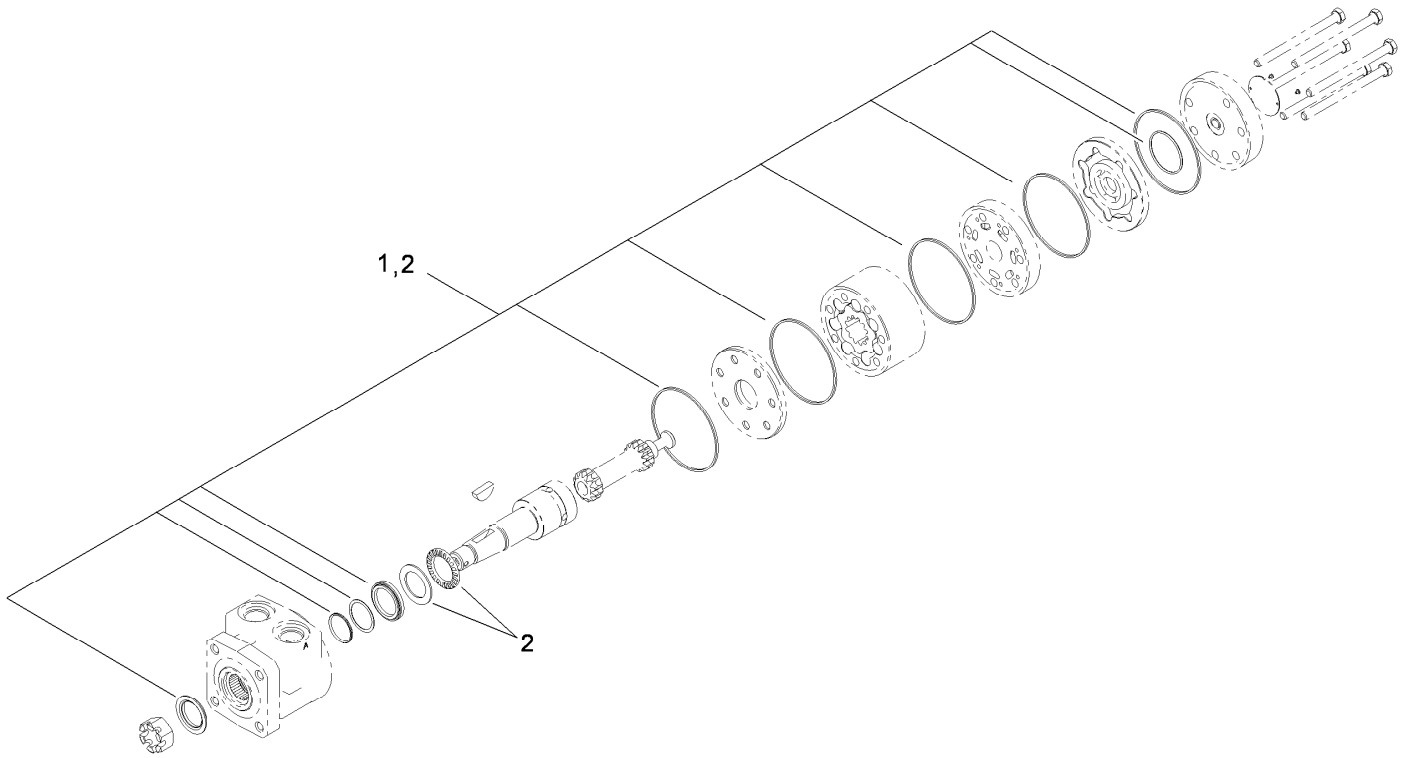
Ref.	Part Number	Qty.	Description
18	115-4486-01	1	Bracket-Canister, Carbon
19	114-0292	1	Bracket-Canister, Carbon
20	321-2	2	Screw-HH
21	117-1221	1	Canister-Carbon, 800Cc
22	115-0962	1	Hose-Vent, Canister
23	99-9415	1	Hose-Fuel
24	114-0286	1	Hose-Vent
25	3290-378	3	Tie-Cable
26	116-2231	1	Hose-Vent, Formed
27	116-2232	1	Valve-Control, Vacuum
28	119-8501	1	Hose-Vent, Formed
29	119-8502	1	Hose-Vent, Formed
30	116-2469	1	Strap-Velcro, Cable Tie



Pump Drive and Engine Pulley Assembly

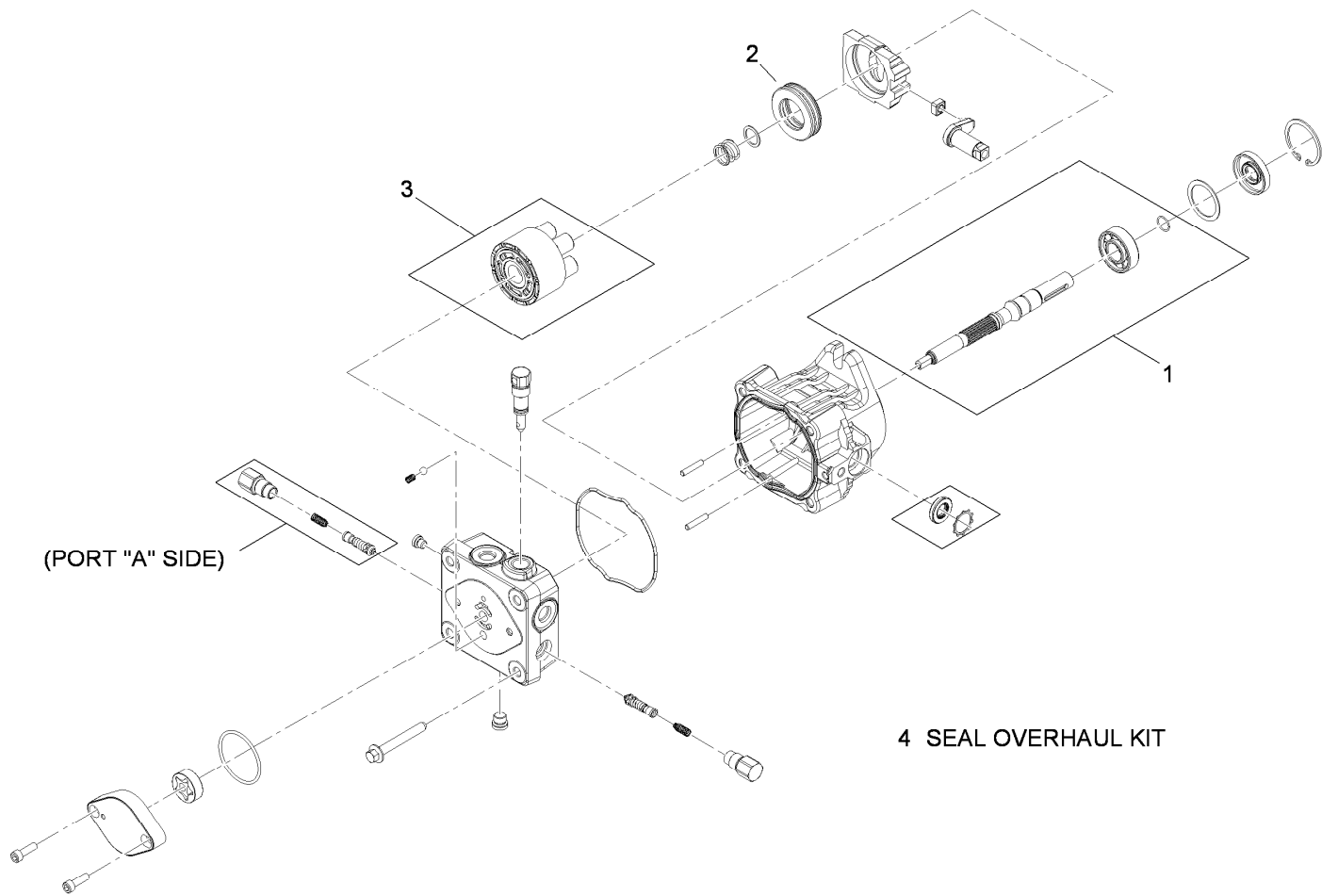
Ref.	Part Number	Qty.	Description
1	242-50	8	Nut-Lug
2	1-413473	2	Wheel And Tire ASM
2:1	1-413474	1	Tire-Turfmaster
2:2	1-603715	1	Wheel-Rim
3	112-9049	2	Wheel Hub ASM
5	323-6	16	Screw-HH
6	98-5975	16	Washer-Belleville
7	103-2289-01	2	Mount-Motor
8	1-806800	2	Pin-Cotter
9	32136-5	2	Nut-Hex, Slotted
10	1-807019	2	Key-Woodruff
11	1-603718	2	HYD Motor ASM
12	3290-357	9	Nut-HHF, Whiz
13	32128-21	1	Nut-HF
14	3256-24	2	Washer-Flat
15	1-603843	1	Pulley-Idler
16	323-7	5	Screw-HH
17	32128-20	2	Nut-HF
18	3296-2	1	Nut-Lock, NI
19	1-603496	1	Bushing-Idler
20	1-602521	1	Idler Arm ASM

Ref.	Part Number	Qty.	Description
20:1	103-4681	2	Sleeve-Bearing
21	3231-29	1	Screw-CARR
22	3256-14	1	Washer-Flat
23	1-809069	1	Screw-HSH
24	323-12	1	Screw-HH
25	3253-21	1	Washer-Lock
26	1-373034	1	Washer
27	1-603044	1	Bushing
28	1-413010	2	Sheave ASM
29	1-807272	2	Key
30	1-803050	4	Screw-Set
31	322-5	1	Screw-HH
32	1-603801	1	Anchor-Spring
33	1-603402	1	Spring-Extension
34	116-0942	1	LH HYD Pump ASM
35	116-0943	1	RH HYD Pump ASM
36	32128-43	4	Nut-Flange
37	1-323365	1	Chain-Link, Twist
38	1-323366	1	Ring-Split
39	302-19	1	Fitting-Grease
40	106-2740	1	V-Belt



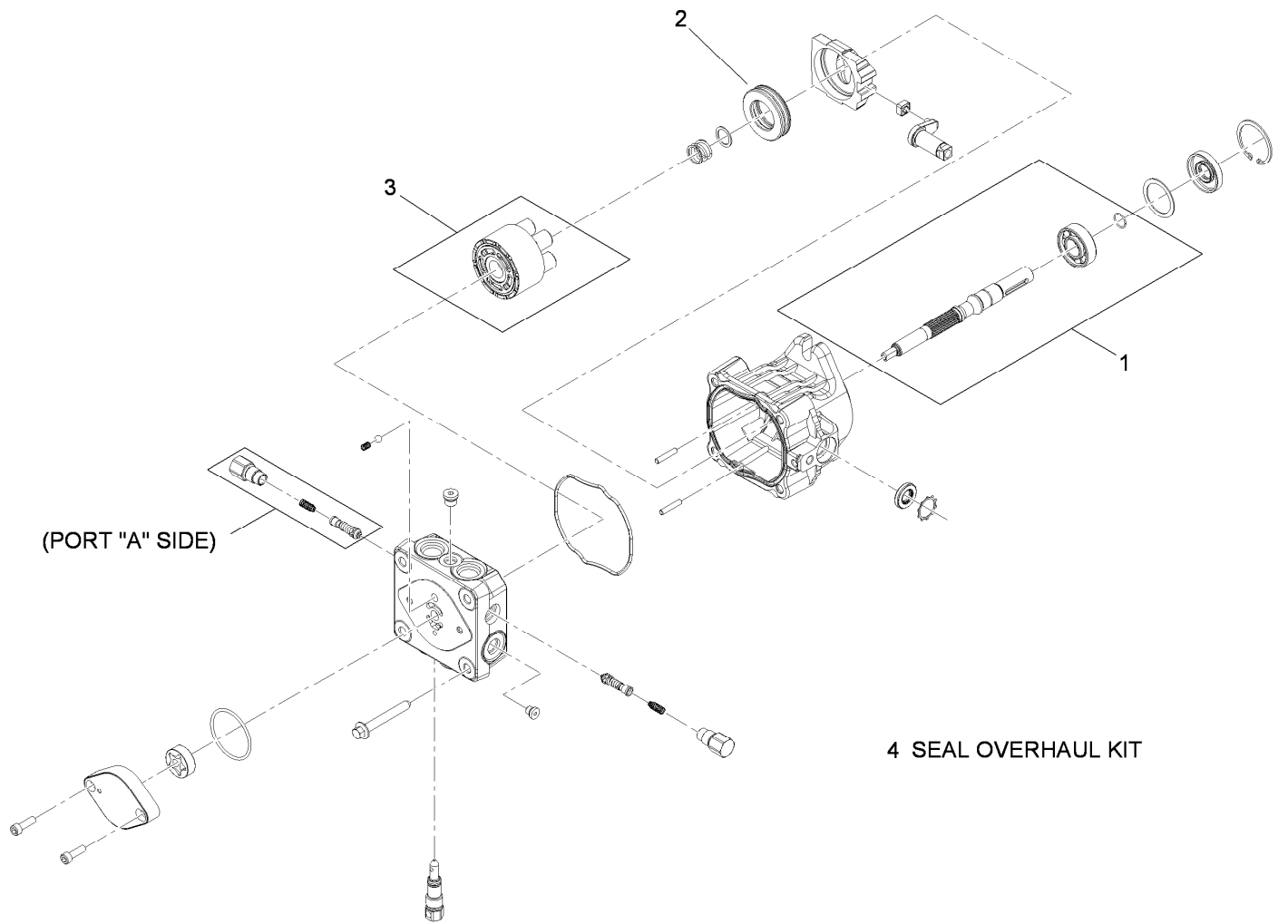
Hydraulic Wheel Motor Assembly No. 1-603718

<i>Ref.</i>	<i>Part Number</i>	<i>Qty.</i>	<i>Description</i>
1	1-000119	1	Seal Kit
2	1-000138	1	Bearing And Seal Kit



LH Hydraulic Pump Assembly No. 116-0942

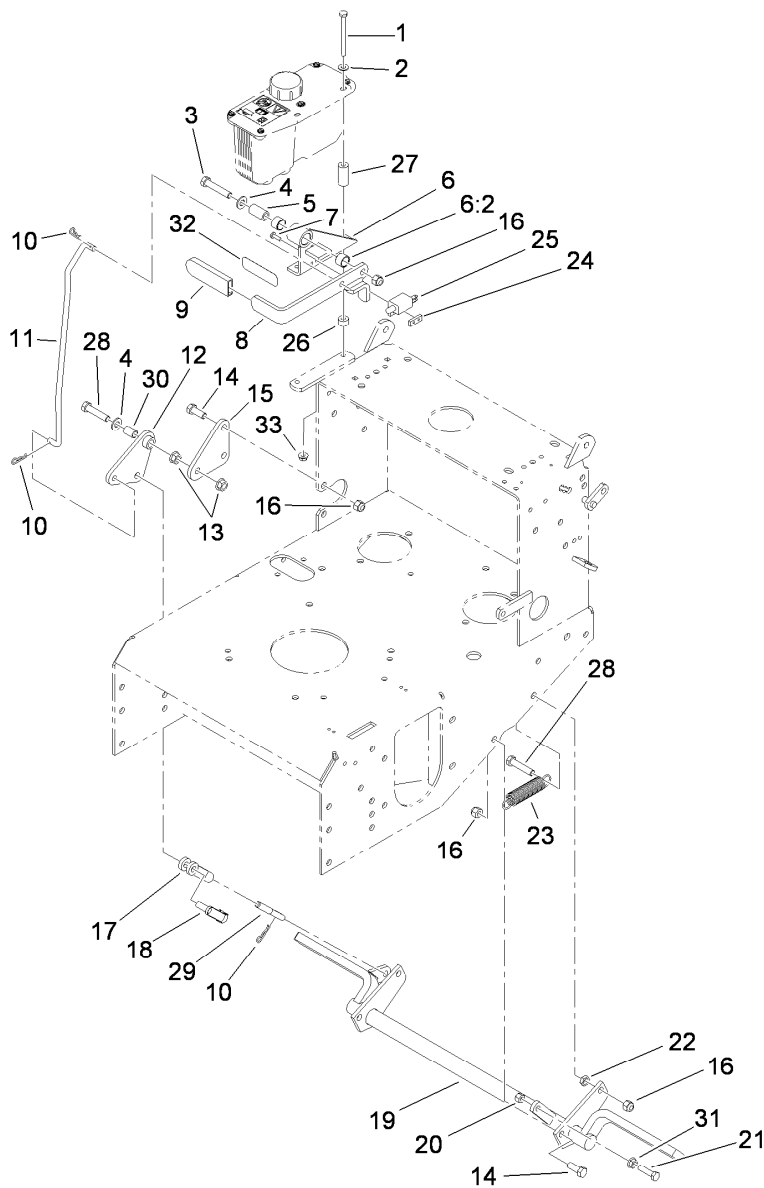
<i>Ref.</i>	<i>Part Number</i>	<i>Qty.</i>	<i>Description</i>
1	103-2664	1	Input Shaft Kit
2	94-6922	1	Bearing-Thrust
3	103-2666	1	Cylinder Block Kit
4	105-6184	1	Seal Overhaul Kit



4 SEAL OVERHAUL KIT

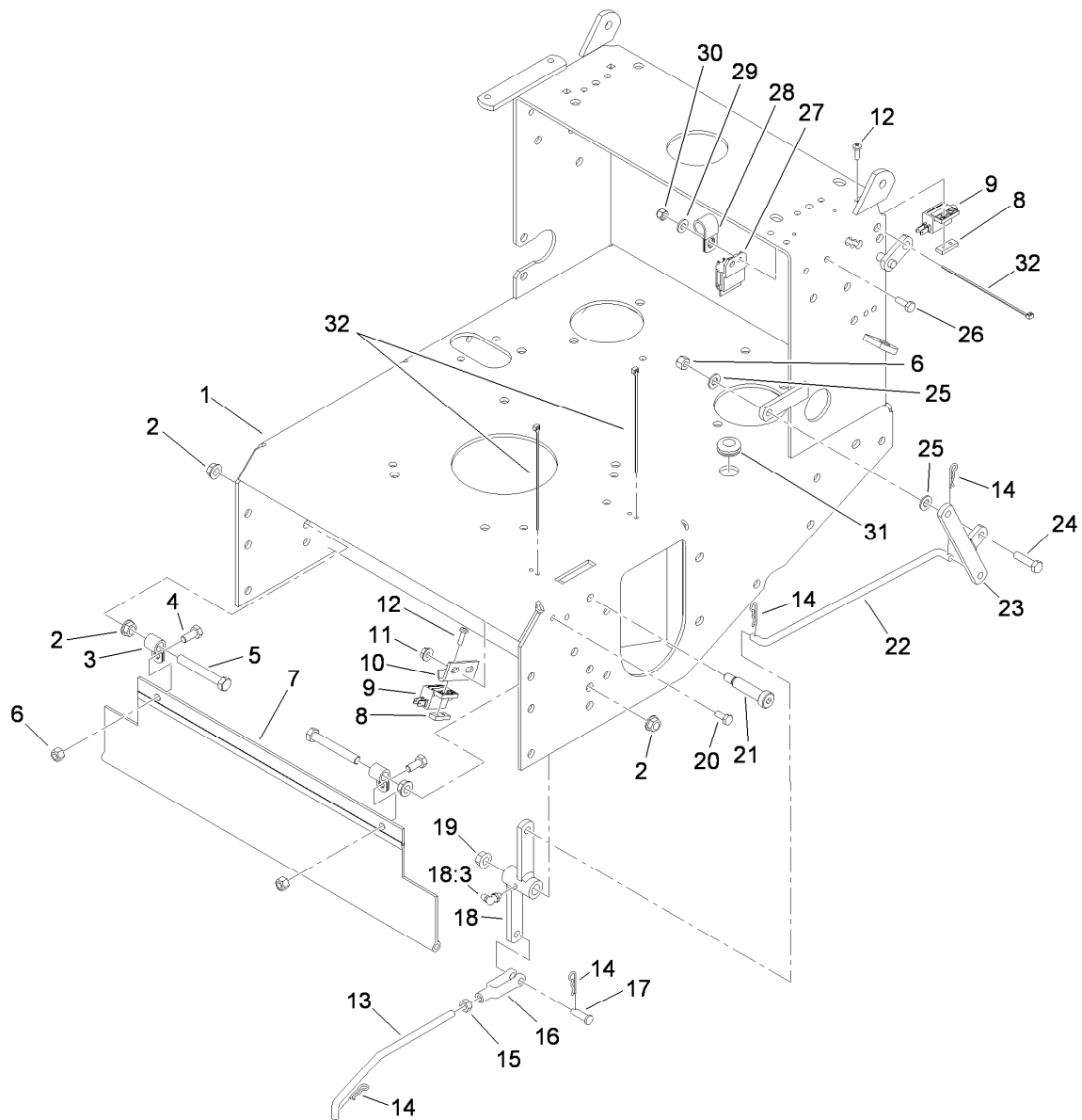
RH Hydraulic Pump Assembly No. 116-0943

<i>Ref.</i>	<i>Part Number</i>	<i>Qty.</i>	<i>Description</i>
1	103-2664	1	Input Shaft Kit
2	94-6922	1	Bearing-Thrust
3	103-2666	1	Cylinder Block Kit
4	105-6184	1	Seal Overhaul Kit



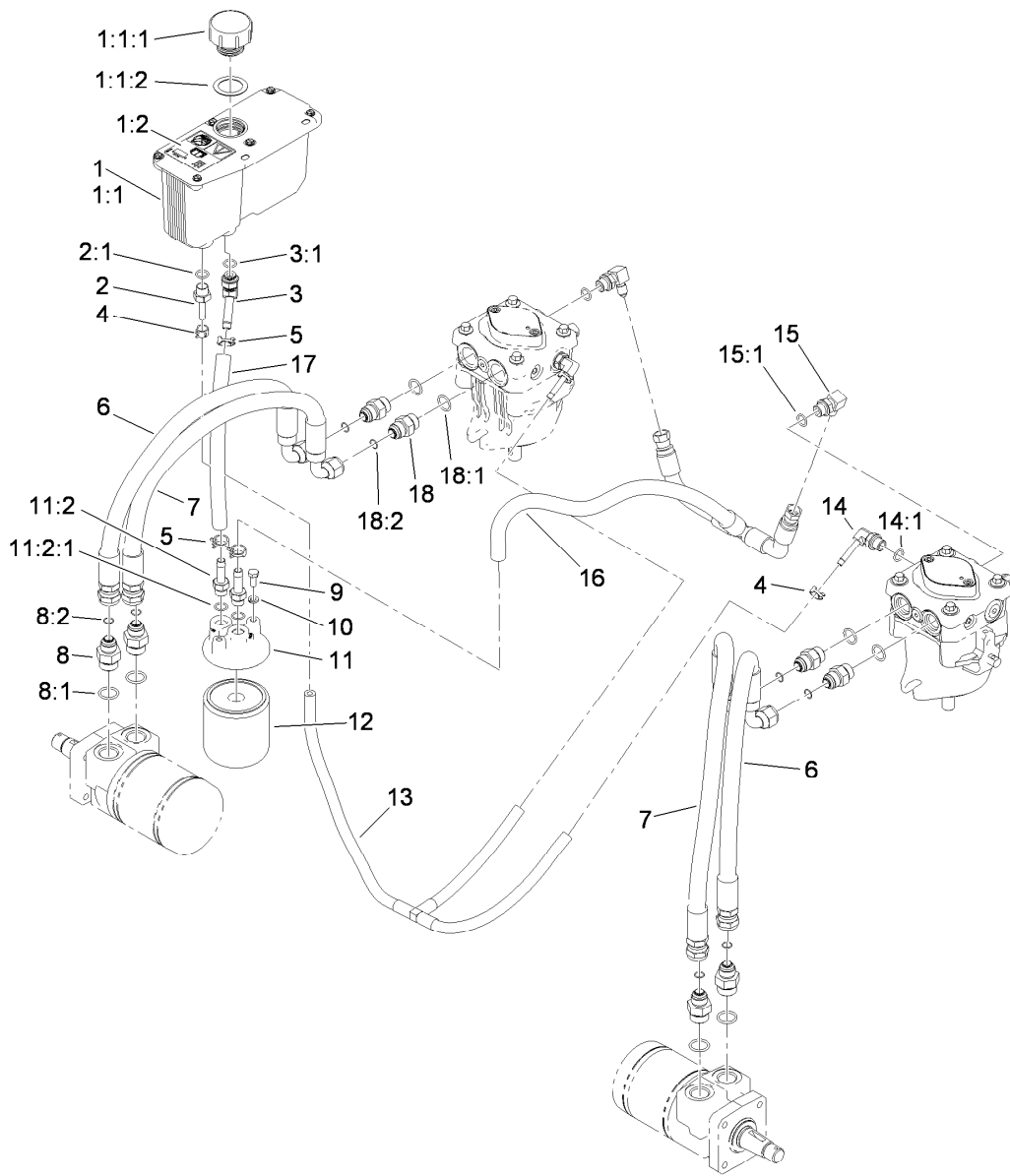
Parking Brake Assembly

Ref.	Part Number	Qty.	Description	Ref.	Part Number	Qty.	Description
1	321-23	2	Screw-HH	17	1-633131	1	Yoke-Linkage, Brake
2	3256-22	2	Washer-Flat	18	103-2399	1	Pin-Spring, Clevis
3	323-10	1	Screw-HH	19	103-2085-03	1	Brake ASM
4	3256-24	2	Washer-Flat	20	3296-29	1	Nut-Lock, NI
5	1-413344	1	Bushing-Pivot	21	116-3515	1	Screw-HH Special
6	1-414504	1	Bracket ASM	22	3218-3	1	Nut-Jam
6:2	1-413347	2	Sleeve-Bushing	23	1-323161	1	Spring-Idler
7	3290-500	2	Screw-PPH	24	1-633181	1	Plate-Tapped
8	1-412501-03	1	Lever-Parkbrake	25	1-513051	1	Switch-Open, Normally
9	1-303020	1	Grip-Lever	26	1-323549	2	Spacer
10	1-806003	3	Pin-Cotter, Hair	27	103-2191	2	Spacer
11	1-413496	1	Linkage-Upper	28	323-9	2	Screw-HH
12	1-414508	1	Bellcrank ASM	29	1-413489	1	Linkage-Lower
13	32128-21	2	Nut-HF	30	1-303548	1	Bushing-Plastic
14	323-6	5	Screw-HH	31	32128-20	1	Nut-HF
15	1-413497	1	Bellcrank	32	103-2103	1	Decal-Brake, Park
16	3296-39	7	Nut-Lock, NI	33	32128-33	2	Nut-HF



Deck Engagement Assembly

<i>Ref.</i>	<i>Part Number</i>	<i>Qty.</i>	<i>Description</i>	<i>Ref.</i>	<i>Part Number</i>	<i>Qty.</i>	<i>Description</i>
1	117-3523-01	1	Hydro Frame ASM	18	1-322108	1	Bellcrank ASM
2	3290-357	4	Nut-HHF, Whiz	18:3	302-40	1	Fitting-Grease
3	1-413510	2	Clip-Loom	19	32128-21	1	Nut-HF
4	322-3	2	Screw-HH	20	321-3	2	Screw-HH
5	323-13	2	Screw-HH	21	1-809062	1	Screw
6	3296-29	3	Nut-Lock, NI	22	1-323172	1	Linkage-Engage, Blade
7	103-2056	1	Shield-Drag	23	1-322090-01	1	Bellcrank ASM
8	1-633181	2	Plate-Tapped	24	322-6	1	Screw-HH
9	1-513051	2	Switch-Open, Normally	25	3256-23	2	Washer-Flat
10	1-323213	1	Bracket-Switch, Blade	26	321-4	1	Screw-HH
11	32128-33	2	Nut-HF	27	1-323430	1	Module-Interlock
12	3290-500	4	Screw-PPH	28	1-603727	1	Clip-Loom
13	1-323174	1	Arm-Linkage, Assist	29	3256-22	1	Washer-Flat
14	1-806003	4	Pin-Cotter, Hair	30	3296-42	1	Nut-Lock, NI
15	3219-2	1	Nut-Hex	31	1-543296	1	Grommet
16	1-303105	1	Yoke-Adjustable	32	1-303287	3	Tie-Cable
17	1-808280	1	Pin-Clevis				

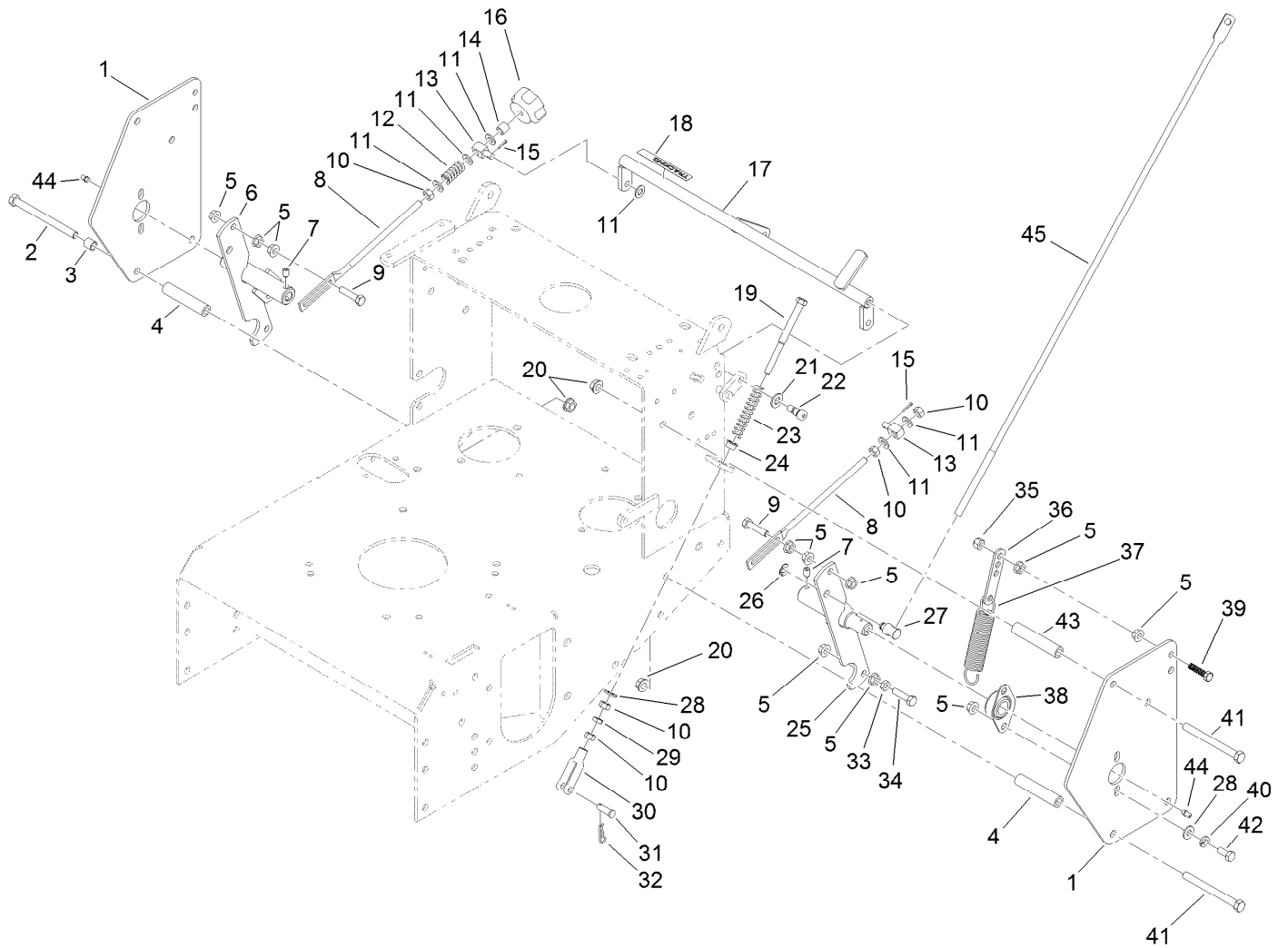


Hydraulic System Assembly

Ref.	Part Number	Qty.	Description
1	107-8433	1	HYD Reservoir ASM
1:1		1	Reservoir-HYD ●
1:1:1	103-1948	1	Cap-Reservoir, HYD
1:1:2	103-1949	1	Gasket-Cap
1:2	115-4212	1	Decal-Warning
2	103-1801	1	Adapter-Straight
2:1	237-42	1	O-Ring
3	103-1807	1	Fitting-Barbed, 45 DEG
3:1	237-42	1	O-Ring
4	103-1716	3	Clamp-Hose
5	103-1988	3	Clamp-Hose
6	119-7827	2	HYD Hose ASM
7	119-7826	2	HYD Hose ASM
8	1-603991	4	Fitting-Straight
8:1	237-80	1	O-Ring
8:2	1-603992	1	O-Ring

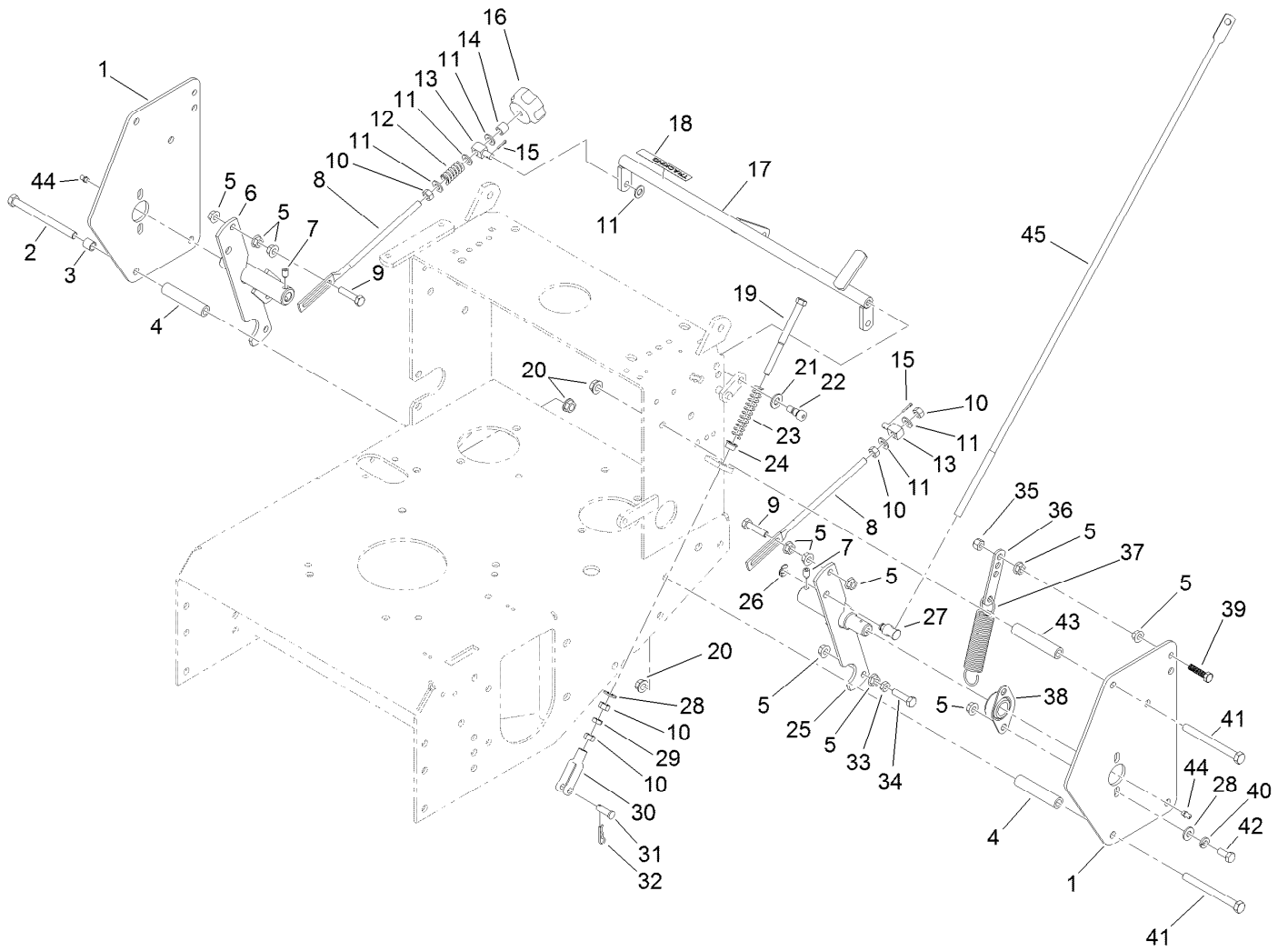
Ref.	Part Number	Qty.	Description
9	321-3	2	Screw-HH
10	1-805004	2	Washer-Lock
11	103-2889	1	Filter Head ASM
11:2	103-1912	2	Adapter-Straight
11:2:1	237-42	1	O-Ring
12	1-633750	1	Filter-Oil, HYD
13	116-0918	1	Case Drain Hose ASM
14	103-1799	2	Elbow-90 DEG
14:1	237-42	1	O-Ring
15	103-1802	2	Fitting-HYD, 90 DEG
15:1	1-603921	1	O-Ring
16	116-2123	1	Charge Hose ASM
17	103-2959	1	Hose-Charge
18	1-603990	4	Fitting-Straight
18:1	1-603920	1	O-Ring
18:2	1-603992	1	O-Ring

● Not serviced separately



Lower Control Assembly

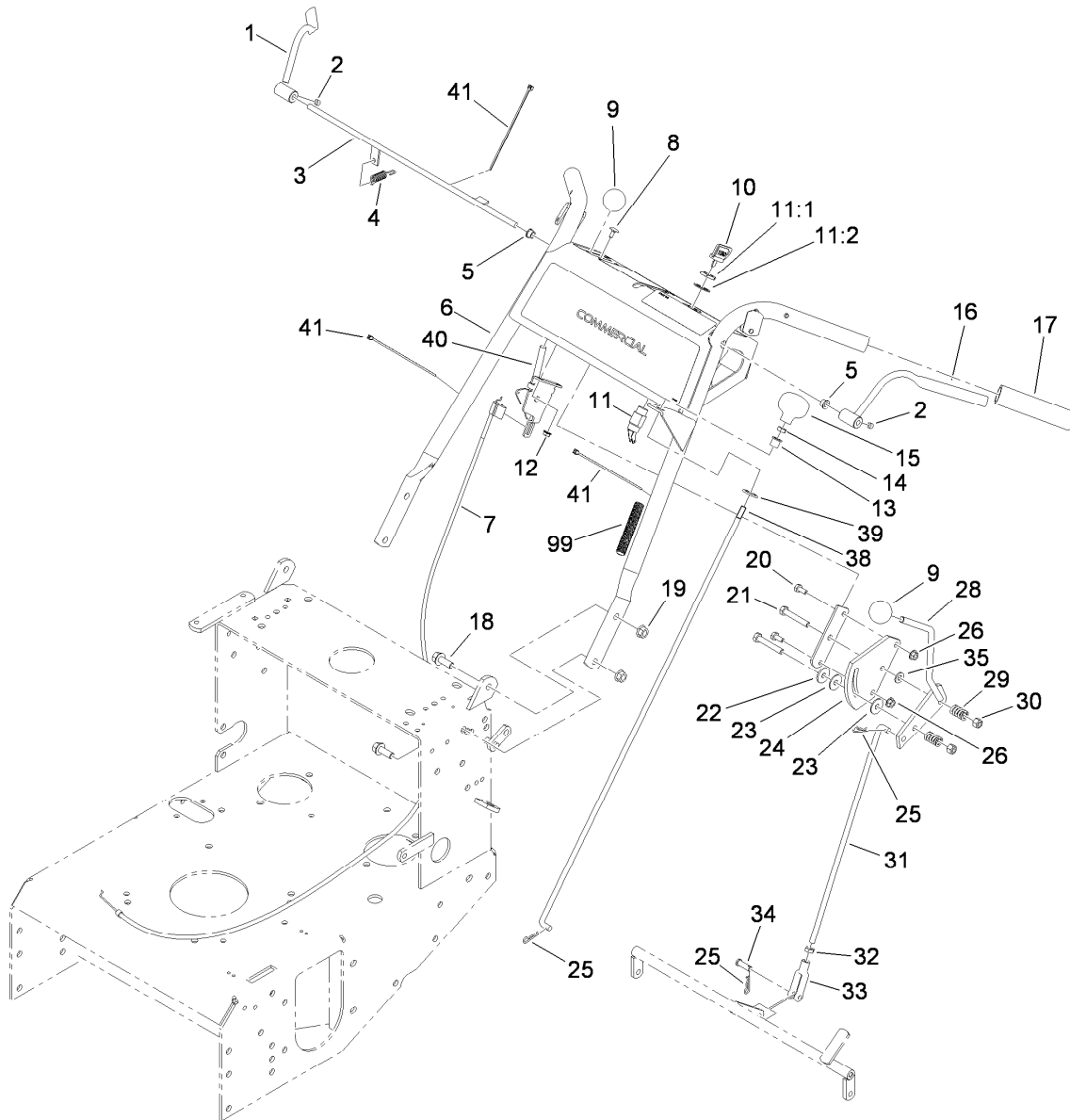
<i>Ref.</i>	<i>Part Number</i>	<i>Qty.</i>	<i>Description</i>	<i>Ref.</i>	<i>Part Number</i>	<i>Qty.</i>	<i>Description</i>
1	110-4897-01	2	Shield-Control	22	1-809056	2	Screw
2	323-23	1	Screw-HH	23	1-603807	2	Spring-Return, Neutral
3	105-4820	1	Spacer-Short	24	1-603735	2	Bushing-Flanged
4	1-323197-01	4	Spacer-Shield	25	103-1190-01	1	Shaft-Control, LH
5	32128-20	18	Nut-HF	26	32151-47	2	Ring-Retaining
6	103-4796-01	1	Shaft-Control, RH	27	103-1235	2	Swivel-Lever, Drive
7	3246-4	2	Screw-Set	28	3256-2	6	Washer-Flat
8	1-413350	2	Link-Control, Speed	29	3220-2	2	Nut-Jam
9	1-403180	2	Screw-HH	30	1-303105	2	Yoke-Adjustable
10	3219-2	7	Nut-Hex	31	1-808280	2	Pin-Clevis
11	3256-23	7	Washer-Flat	32	1-806003	2	Pin-Cotter, Hair
12	1-323245	1	Spring-Compression	33	3218-2	2	Nut-Jam
13	1-603676	2	Swivel-Adjustable, Short	34	116-3515	2	Screw-HH Special
14	1-603903	1	Spacer	35	3296-29	2	Nut-Lock, NI
15	3272-5	2	Pin-Cotter	36	1-613089	2	Tab-Spring, Extension
16	103-3060	1	Knob-Tracking	37	1-603693	2	Spring-Extension
17	1-412203-01	1	Crank-Control, Speed	38	1-633102	2	Bearing-Flange, Side
18	105-4109	1	Decal-Tracking	39	1-800016	2	Bolt-TAP, HH
19	1-603737	2	Bolt-Return, Neutral	40	1-805005	4	Washer-Lock
20	3290-357	8	Nut-HHF, Whiz	41	323-16	7	Screw-HH
21	3256-24	2	Washer-Flat	42	322-3	4	Screw-HH



Lower Control Assembly (continued)

<i>Ref.</i>	<i>Part Number</i>	<i>Qty.</i>	<i>Description</i>
43	1-323195-01	4	Spacer-Shield

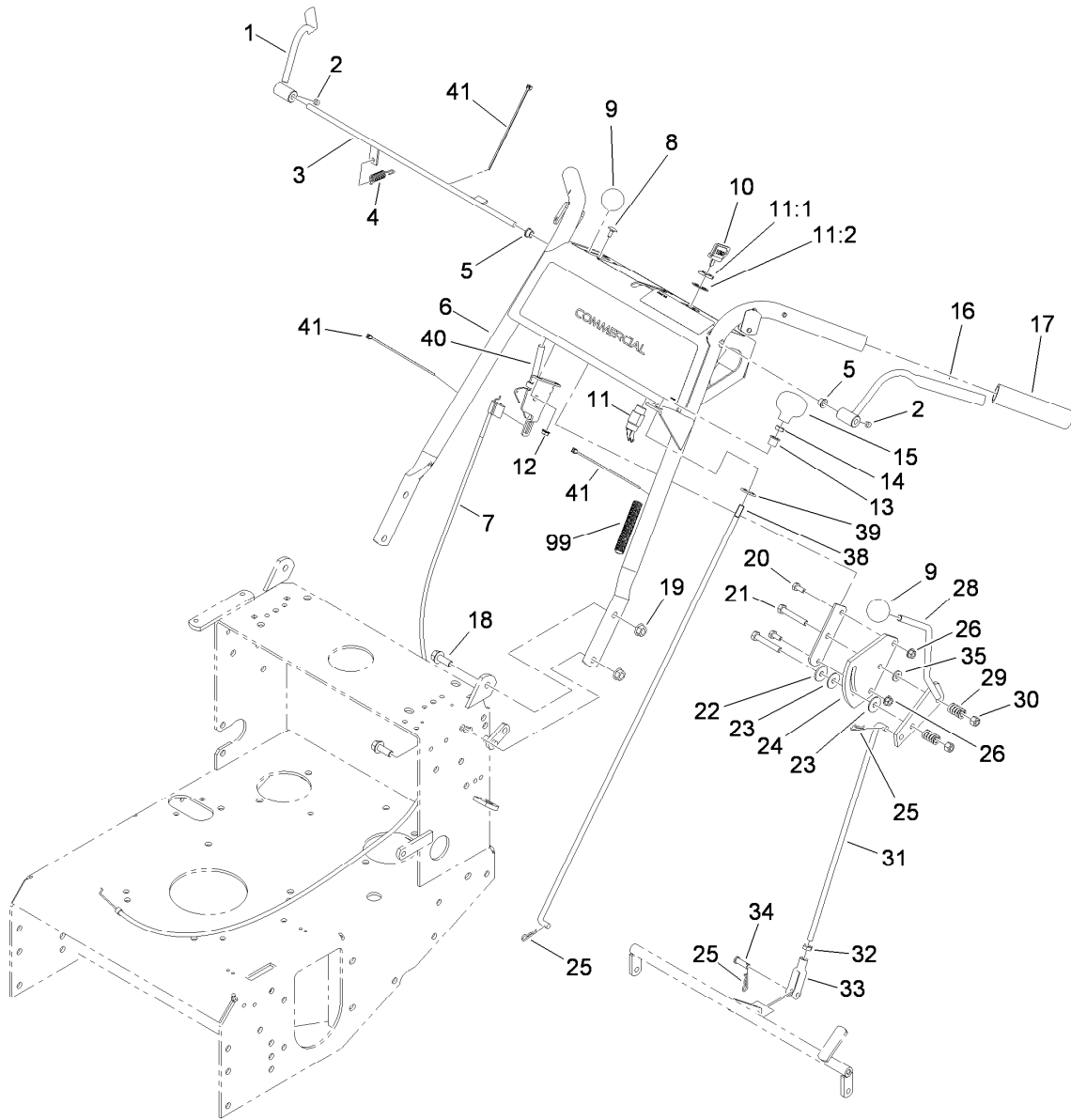
<i>Ref.</i>	<i>Part Number</i>	<i>Qty.</i>	<i>Description</i>
44	302-19	2	Fitting-Grease
45	1-413219	2	Rod-Lever, Drive



Upper Control Assembly

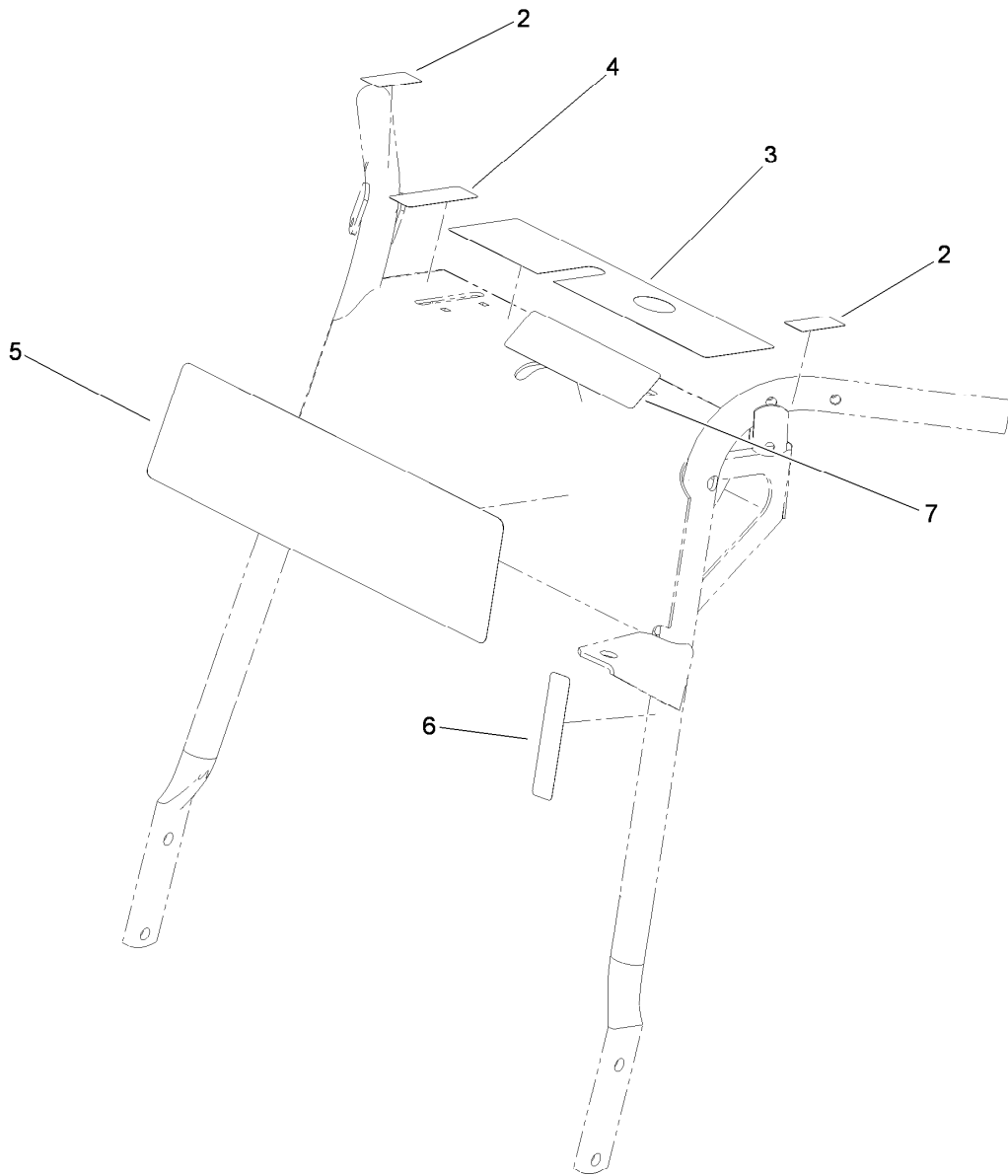
Ref.	Part Number	Qty.	Description
1	106-5486	1	RH Operator Presence Control Lever ASM
2	1-803322	2	Screw-Set
3	106-2717-03	1	Rod-Control, Operator Presence
4	1-303363	1	Spring-Extension
5	1-303365	2	Bushing-Nylon
6	119-6538	1	Handle ASM
7	119-1823	1	Cable-Control, Throttle
8	1-807513	2	Bolt-CARR
9	1-603175	2	Knob-Ball
10	63-8360	1	Key-Ignition
11	29-5560	1	Switch-On / Off
11:1	218-461	1	Nut-HH
11:2	3254-5	1	Washer-Tooth, Internal
12	32128-17	2	Nut-Lock, Flange
13	1-323143	1	Bearing-Nylon
14	3218-2	1	Nut-Jam
15	1-323134	1	Knob-Push / Pull
16	106-5485	1	LH Operator Presence Control Lever ASM

Ref.	Part Number	Qty.	Description
17	104-9838	2	Grip-Foam
18	3234-11	4	Screw-HHF
19	32128-21	4	Nut-HF
20	321-3	2	Screw-HH
21	322-10	2	Screw-HH
22	1-603716	1	Washer-Friction
23	1-323244	2	Washer-Friction
24	1-603730	1	Plate-Lever, Shifter
25	1-806003	3	Pin-Cotter, Hair
26	32128-33	2	Nut-HF
28	106-2748	1	Lever-Shift
29	1-323245	2	Spring-Compression
30	3296-29	2	Nut-Lock, NI
31	1-323522	1	Rod-Control, Speed
32	3220-2	1	Nut-Jam
33	1-303105	1	Yoke-Adjustable
34	1-808280	1	Pin-Clevis
35	3256-23	1	Washer-Flat
38	1-323181	1	Linkage-Blade
39	1-323142	1	Nut-Push
40	110-5547	1	Control Lever ASM



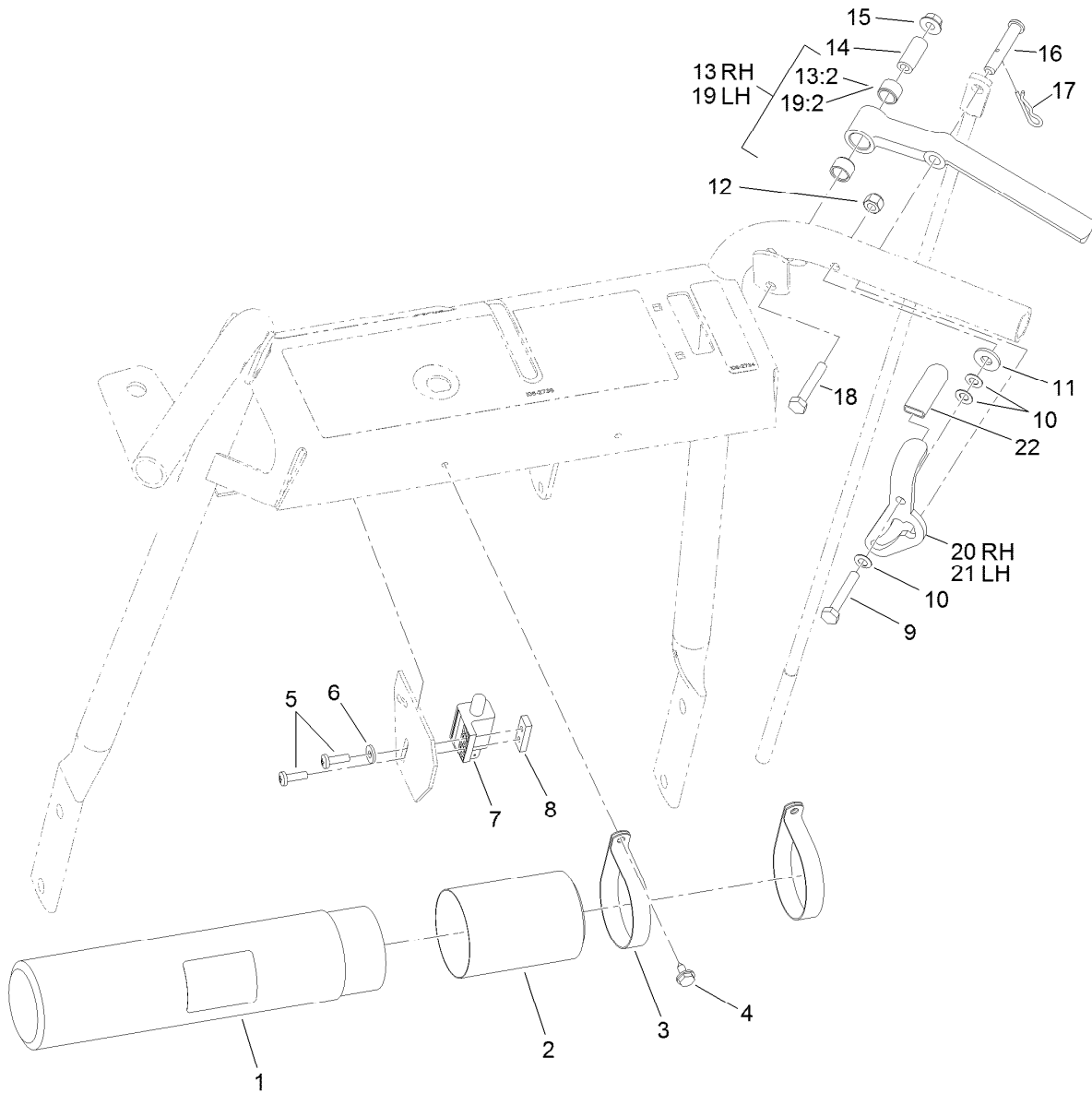
Upper Control Assembly (continued)

<i>Ref.</i>	<i>Part Number</i>	<i>Qty.</i>	<i>Description</i>
41	1-303287	3	Tie-Cable
99	116-2611	1	Harness-Wiring



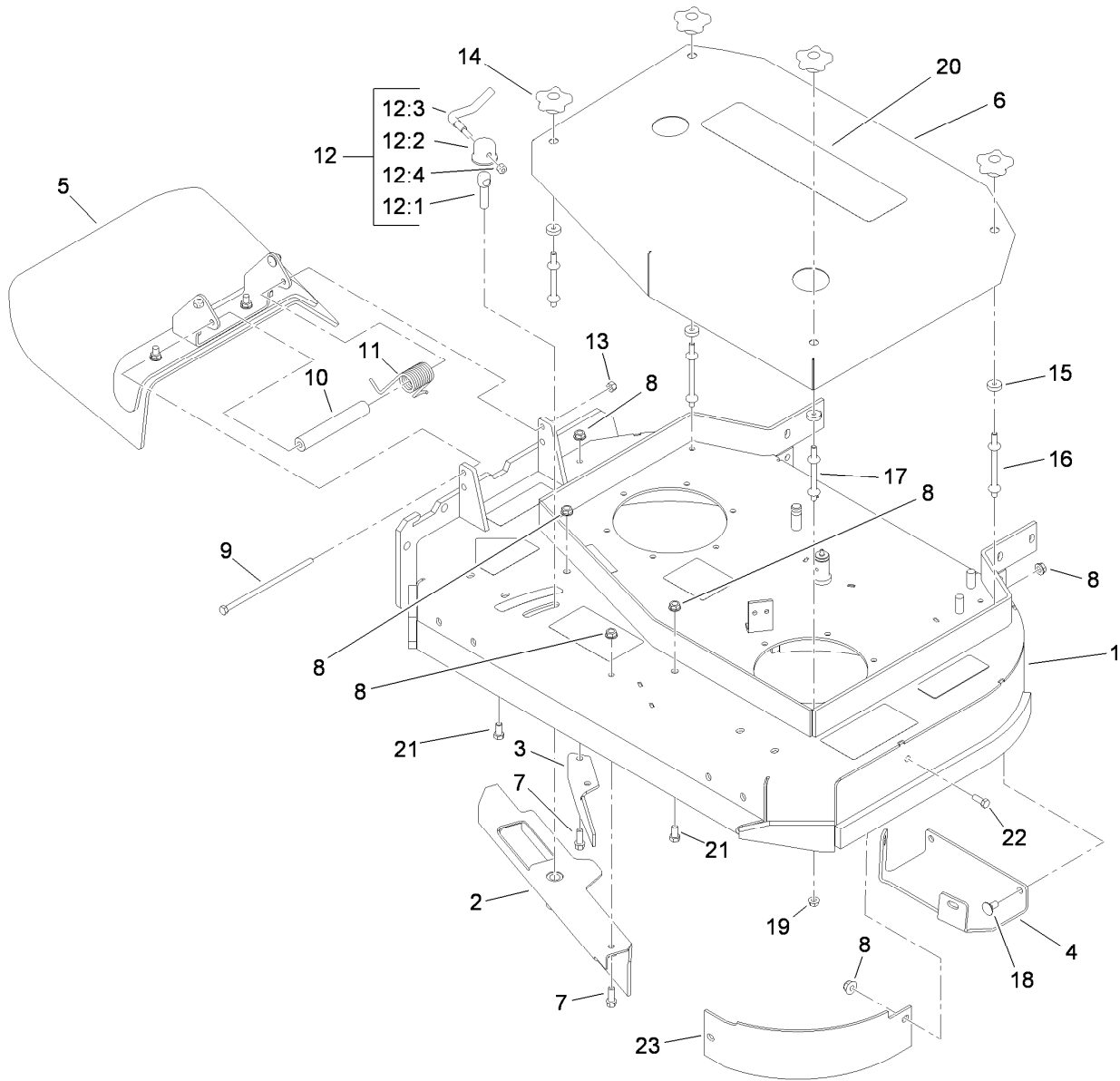
Handle Assembly No. 119-6538

<i>Ref.</i>	<i>Part Number</i>	<i>Qty.</i>	<i>Description</i>
2	105-4110	2	Decal-Lock, Neutral
3	106-2738	1	Decal-Warning
4	106-2733	1	Decal-Throttle
5	110-6917	1	Decal
6	95-5537	1	Decal-Engage, Deck
7	106-2743	1	Decal-Caution, Brake



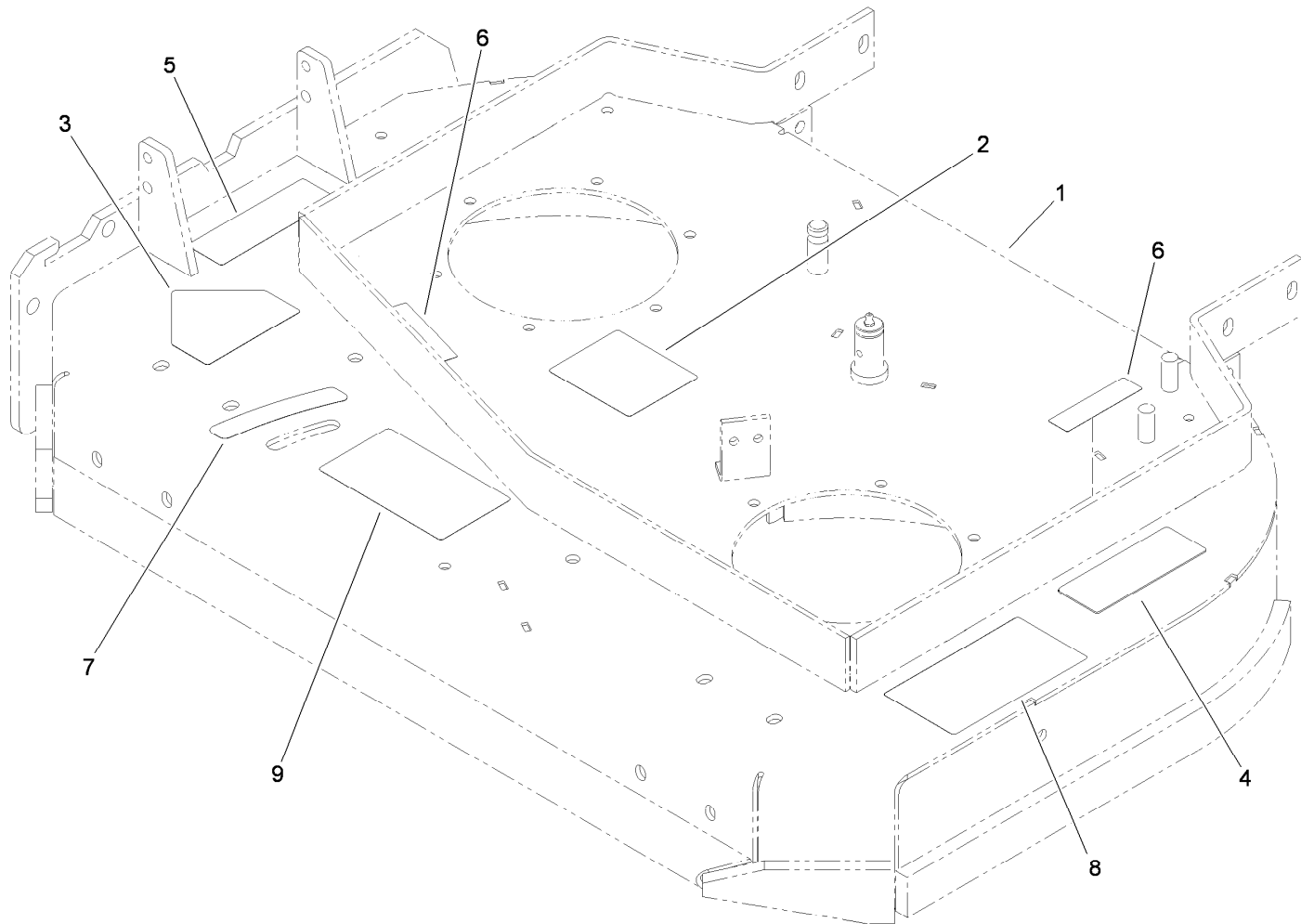
Drive Lever Assembly

<i>Ref.</i>	<i>Part Number</i>	<i>Qty.</i>	<i>Description</i>	<i>Ref.</i>	<i>Part Number</i>	<i>Qty.</i>	<i>Description</i>
1	104-7050	1	Tube-Manual	13	103-0219	1	RH Drive Lever ASM
2	104-7048	1	Cap-Housing	13:2	1-413152	2	Bushing-Sleeve
3	2412-120	2	R-Clamp	14	1-603749	2	Bushing-Lever, Drive
4	32104-76	2	Screw	15	32128-33	2	Nut-HF
5	3290-500	2	Screw-PPH	16	1-613055	2	Pin-Clevis
6	3256-14	1	Washer-Flat	17	1-806003	2	Pin-Cotter, Hair
7	1-513051	1	Switch-Open, Normally	18	321-9	2	Screw-HH
8	1-633181	1	Plate-Tapped	19	103-0218	1	LH Drive Lever ASM
9	321-10	2	Screw-HH	19:2	1-413152	2	Bushing-Sleeve
10	1-303435	6	Washer-Spring	20	1-612168	1	RH Grip / Latch ASM
11	3256-2	2	Washer-Flat	21	1-612167	1	LH Grip / Latch ASM
12	3296-42	2	Nut-Lock, NI	22	1-303019	2	Grip-Latch



Deck Assembly

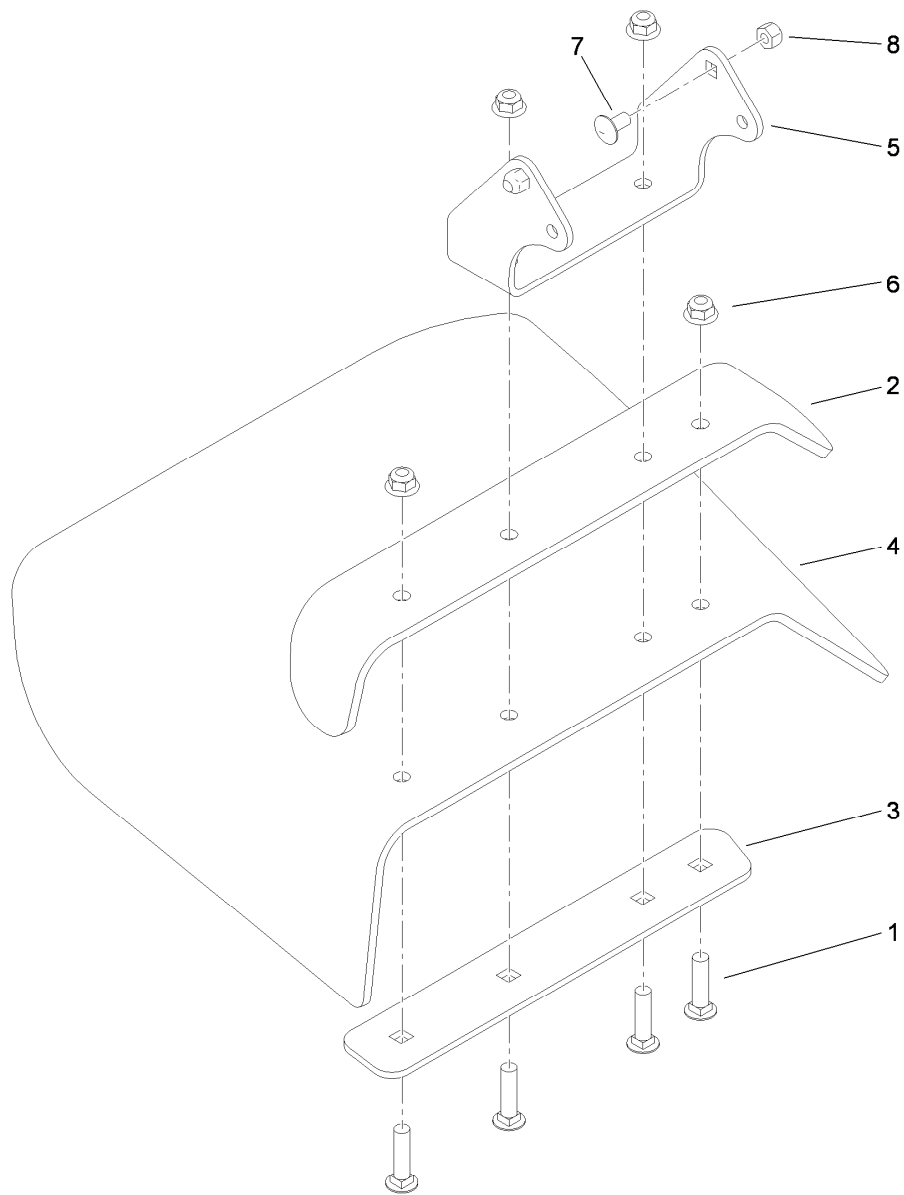
<i>Ref.</i>	<i>Part Number</i>	<i>Qty.</i>	<i>Description</i>	<i>Ref.</i>	<i>Part Number</i>	<i>Qty.</i>	<i>Description</i>
1	110-4907	1	Deck ASM	12:3	106-3241	1	Lever-Lock
2	110-2031-03	1	Baffle-Adjustable	12:4	3296-29	1	Nut-Lock, NI
3	110-0754-01	1	Baffle-Discharge	13	3296-47	1	Nut-Lock, NI
4	110-2037-01	1	Plate-Skid	14	106-4161	4	Knob-Handle
5	119-6530	1	Deflector ASM	15	1-323417	4	Washer
6	110-2036-01	1	Cover-Deck	16	1-303536	2	Stud-Shield, Belt (Long)
7	92-1624	3	Screw-HWH	17	1-303537	2	Stud-Shield, Belt (Short)
8	104-8301	10	Nut-Flange, NI	18	3231-2	4	Screw-CARR
9	322-50	1	Screw-HH	19	32128-20	4	Nut-HF
10	105-4622	1	Spacer	20	112-9710	1	Decal
11	104-8554	1	Spring-Torsion	21	323-4	2	Screw-HH
12	107-1664	1	Lever ASM	22	323-6	1	Screw-HH
12:1	106-3239	1	Screw-Lock	23	110-6903-03	1	Baffle-Front, LH
12:2	107-1644	1	Cap-Lock				



Deck Decal Assembly No. 110-4907

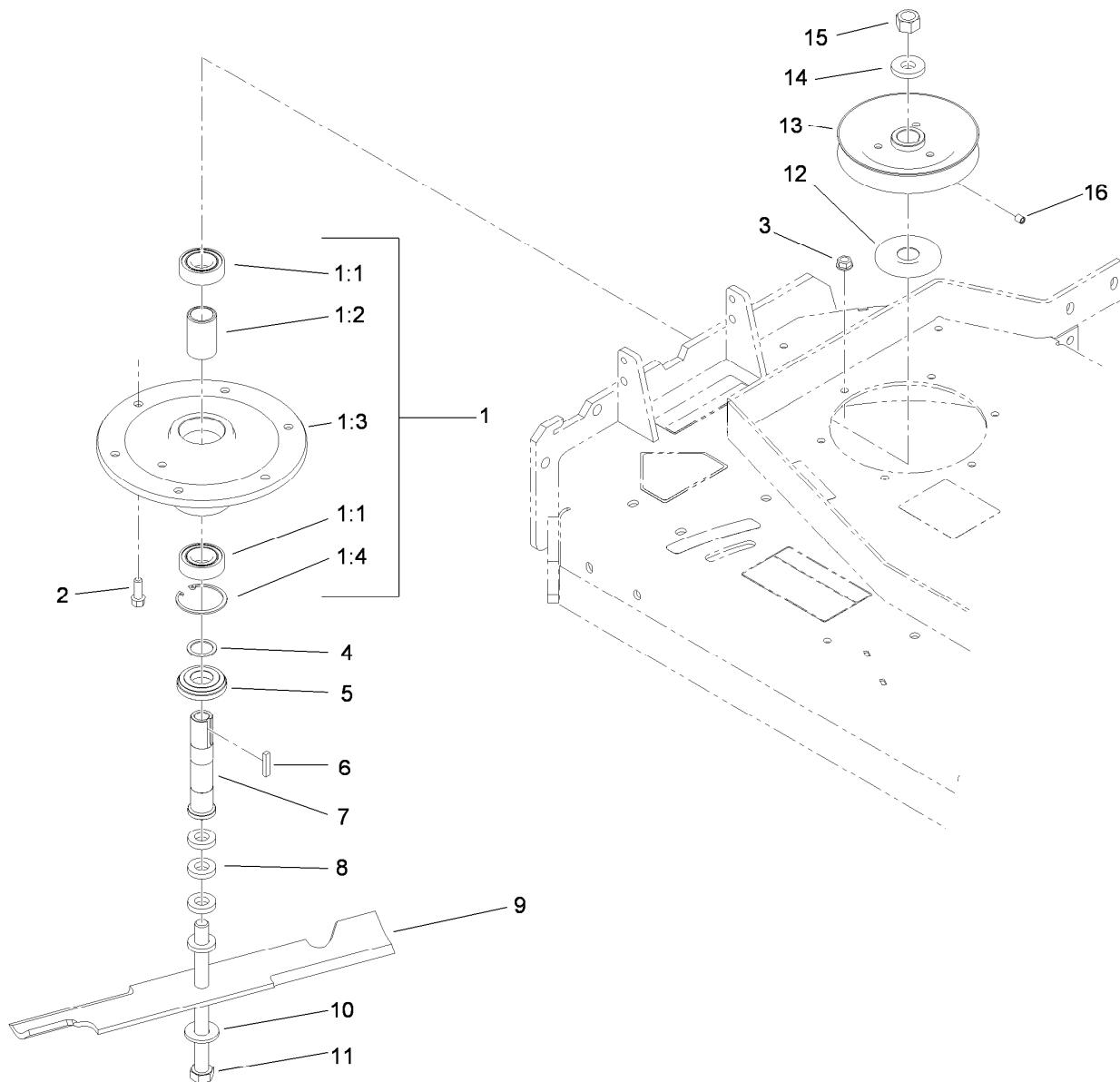
<i>Ref.</i>	<i>Part Number</i>	<i>Qty.</i>	<i>Description</i>
1		1	36 Inch Deck ASM ●
2	98-3296	1	Decal-Routing, Belt
3	43-8480	1	Decal-Danger
4	98-5130	1	Decal-Torque, Bolt
5	104-8569	1	Decal-Warning
6	98-5954	2	Decal-Cover, Missing
7	110-2067	1	Decal-Setting, Baffle
8	66-1340	1	Decal-Danger, Thrown Object
9	110-2068	1	Decal-Adjustment, Baffle

● Not serviced separately



Deflector Assembly No. 119-6530

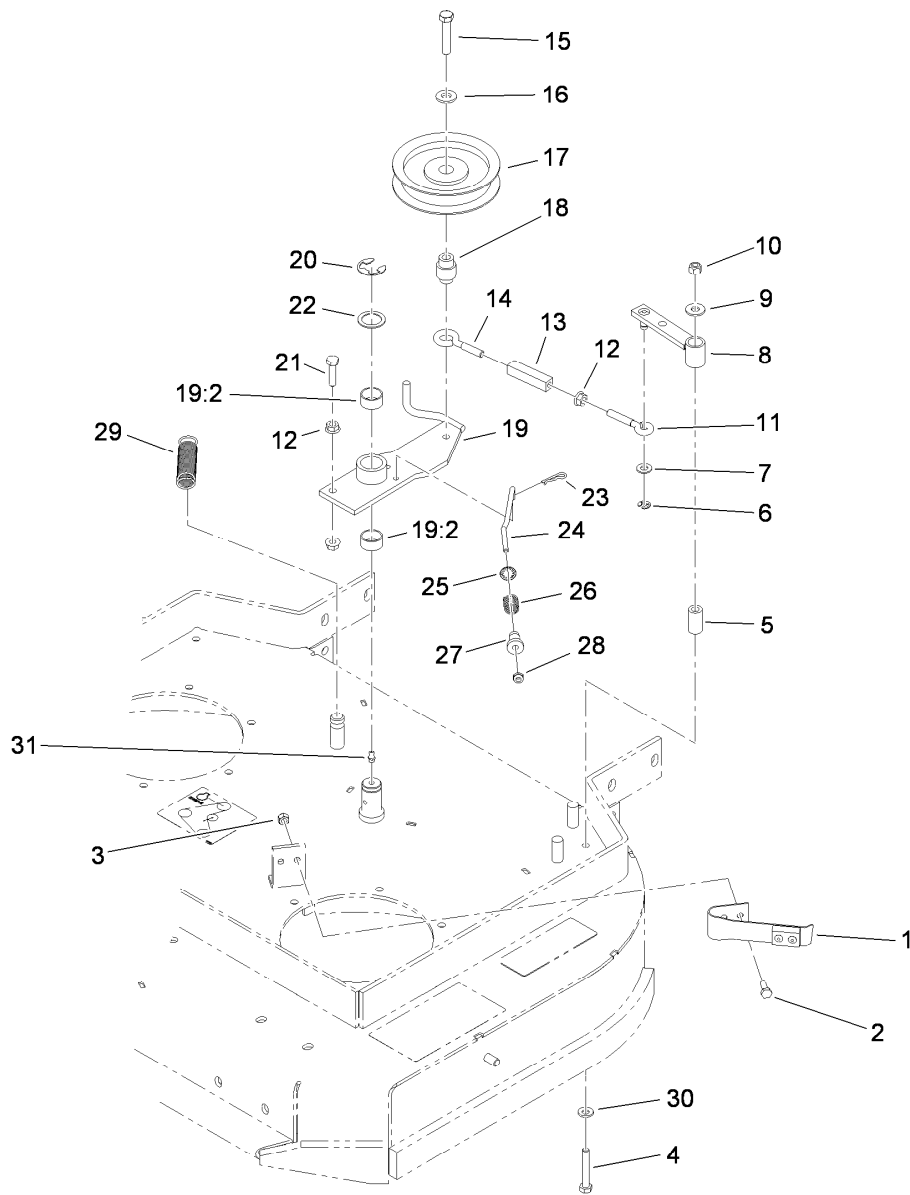
<i>Ref.</i>	<i>Part Number</i>	<i>Qty.</i>	<i>Description</i>
1	3231-4	4	Screw-CARR
2	110-0792-01	1	Deflector
3	110-0793-03	1	Strap-Discharge
4	110-0791	1	Deflector-Rubber
5	119-6532-01	1	Bracket-Mounting, Deflector
6	104-8301	4	Nut-Flange, NI
7	3230-18	2	Screw-CARR
8	3296-29	2	Nut-Lock, NI



Sheave, Spindle and Blade Assembly

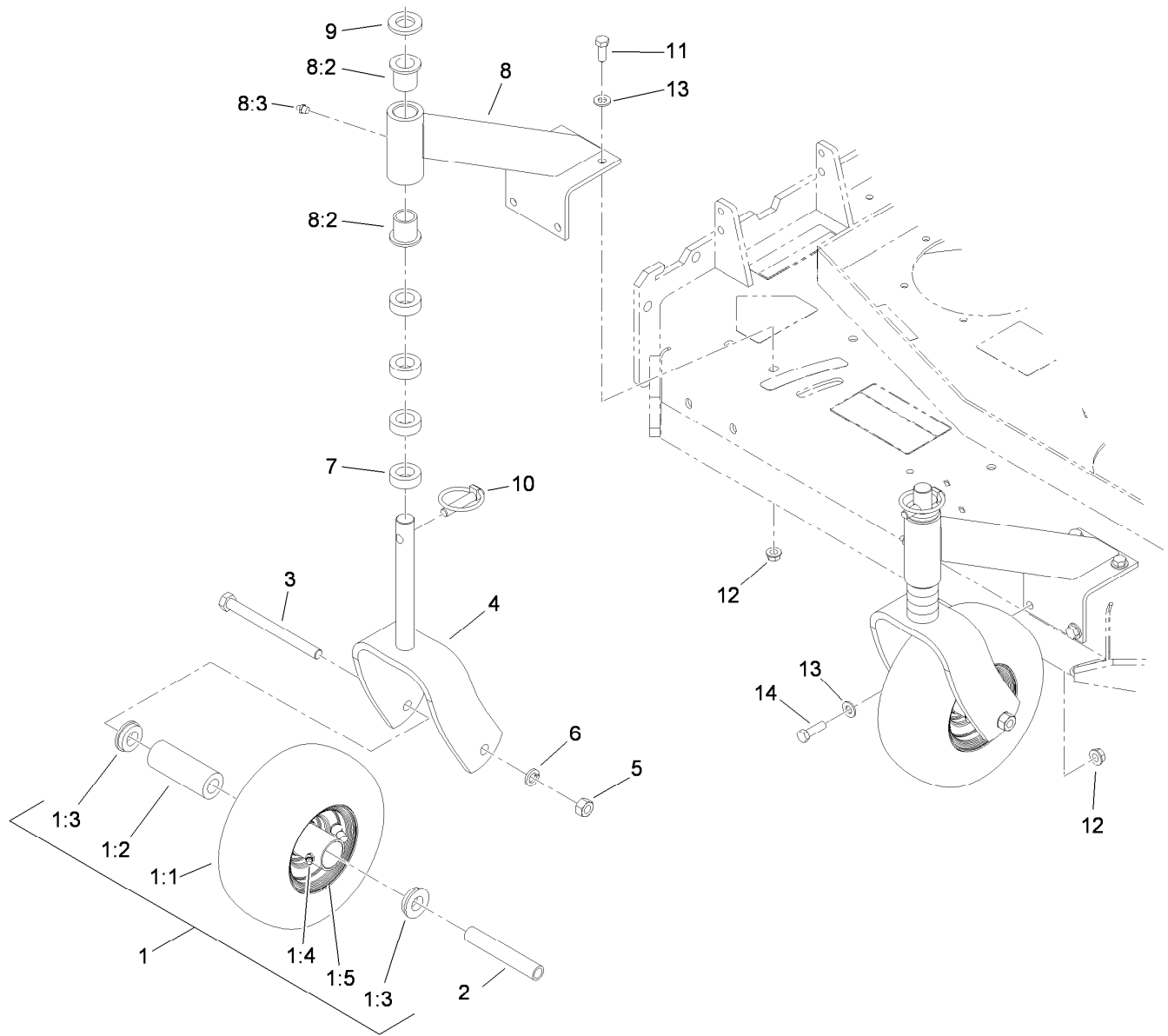
Ref.	Part Number	Qty.	Description
1	108-6697	2	Spindle Housing ASM
1:1	110-2118	2	Bearing
1:2	110-2116	1	Spacer-Bearing
1:3	108-6694	1	Housing-Spindle
1:4	32120-8	1	Ring-Snap
2	92-1624	12	Screw-HWH
3	104-8301	12	Nut-Flange, NI
4	110-4888	2	Washer-Spacer
5	103-2535	2	Spacer-Guard, Bottom
6	1-807267	2	Key

Ref.	Part Number	Qty.	Description
7	1-323529	2	Tube-Spindle, Short
8	1-323539	8	Spacer
9	105-7781-03	2	Blade-18 Inch (Hi Flow)
10	1-513208	2	Washer-Spring
11	1-800861	2	Screw-Cap, HH
12	103-1330	2	Guard-Bearing, Top
13	1-403183	2	Sheave
14	1-323339	2	Washer-Retainer, Sheave
15	3219-6	2	Nut-Hex
16	1-803310	2	Screw-Set



Idler Assembly

<i>Ref.</i>	<i>Part Number</i>	<i>Qty.</i>	<i>Description</i>	<i>Ref.</i>	<i>Part Number</i>	<i>Qty.</i>	<i>Description</i>
1	1-324372	1	Pad And Spring ASM	17	1-603843	1	Pulley-Idler
2	321-4	2	Screw-HH	18	1-303434	1	Bushing-Engagement
3	3296-42	2	Nut-Lock, NI	19	103-3600	1	Idler Arm ASM
4	322-10	1	Screw-HH	19:2	1-323729	2	Sleeve-Bearing
5	1-403179	1	Tube-Pivot	20	32151-103	1	Ring-Retaining, EXT
6	32120-35	1	Ring-Retaining, EXT	21	322-6	1	Screw-HH
7	3256-23	1	Washer-Flat	22	1-303352	1	Washer-Spindle
8	1-322235	1	Arm-Assist	23	1-806003	1	Pin-Cotter, Hair
9	3256-3	1	Washer-Flat	24	1-323715	1	Rod-Brake
10	3296-29	1	Nut-Lock, NI	25	1-323748	1	Ring-Push On
11	1-303238	1	Eyebolt-Thread, RH	26	1-323747	1	Spring-Compression
12	32128-20	3	Nut-HF	27	1-323746	1	Spacer-Flanged
13	1-303236	1	Body-Turnbuckle	28	3296-56	1	Nut-Lock, NI
14	1-303348	1	Eyebolt-Thread, LH	29	1-323071	1	Spring-Extension
15	702809	1	Screw-HH	30	1-303334	1	Washer-Spring
16	98-5975	1	Washer-Belleville	31	302-19	2	Fitting-Grease



Caster Assembly

Ref.	Part Number	Qty.	Description	Ref.	Part Number	Qty.	Description
1	110-5023	2	Wheel And Tire ASM	7	1-303314	8	Spacer-Caster
1:1		1	Tire ●	8	110-2130	2	Support ASM
1:2	1-513809	1	Bearing	8:2	1-303514	2	Bearing-Flanged
1:3	1-513810	2	Bushing	8:3	302-52	1	Fitting-Grease
1:4	302-61	1	Fitting-Grease	9	1-513338	2	Washer-Flat
1:5		1	Wheel ●	10	1-809020	2	Pin
2	1-513547	2	Spacer	11	323-6	7	Screw-HH
3	325-20	2	Screw-HH	12	104-8301	8	Nut-Flange, NI
4	1-322145-01	2	Fork	13	3256-24	8	Washer-Flat
5	3217-9	2	Nut-HH	14	323-7	1	Screw-HH
6	3253-7	2	Washer-Lock				

● Not serviced separately

Attachments and Accessories

For 39934 Commercial Walk-Behind Mower Fixed Deck, Pistol Grip, Hydro Drive with 36in TURBO FORCE Cutting Unit

Product Name	Model/Part
Blade-Recycler, 18 inch	105-7779-03
Blade-Med Flow, 18 inch.....	105-7794-03
Blade-Low Flow, 18 inch	105-7795-03
Blade-Atomic, 18 inch.....	105-7796-03
Blade-Hi Flow, 18 inch (6 Pack)	108-1117
Blade-Atomic, 18 inch (6 Pack).....	108-1118
Blade-Lo Flow, 18 inch (6 Pack)	110-0406
Blade-Recycler, 18 inch (6 Pack).....	110-0408
Blade-Med Flow, 18 inch (6 Pack)	110-0409
36 inch Bagger Enhancement Kit.....	110-2026
36 inch Recycler Kit	110-2080
Weight Kit	110-2085
Operator-Controlled Discharge Chute Kit	115-4190
Soft Bag (3 Bushel).....	30104
Sulky.....	30109

Notes:

Notes:



Count on it.