



Count on it.

Form No. 3367-753 Rev A

Parts Catalog

North American Road Light Kit
Groundsmaster® 4000-D/4100-D Series
Traction Unit
Model No. 30452

Ordering Replacement Parts

To order replacement parts, please supply the part number, the quantity, and the description of each part desired.

Understanding Reference Numbers

Each identified part in an illustration has a reference number. The reference number for a part also appears in the parts list, along with other information about the part.

This catalog uses two special reference number formats, one to indicate parts in a service assembly and another to indicate the quantity of a given part in an illustration.

Service Assembly Reference Numbers

Parts in service assemblies have reference numbers in the form a:b. The a represents the reference number of the entire service assembly and the b represents a sequential number unique to each part within the service assembly.

For example, a wheel assembly might be identified by reference number 6, the tire by 6:1, the valve by 6:2, and the wheel by 6:3. When you order the assembly identified by reference number 6, you receive all parts identified by reference numbers 6:1, 6:2, and 6:3. However, you may also order any part individually. Reference numbers of this type appear in illustration and in parts lists.

Reference Numbers Indicating Quantity

In an illustration, if a reference number indicates more than one part, the reference number has the form nX y. The n represents the quantity of the part, the X is the multiplication symbol, and the y represents the reference number.

For example, in an illustration, the reference number 2X 37 means that two of the parts identified by reference number 37 are indicated.

List of Abbreviations

AR: as required

ASM: assembly

BBC: blade brake control

BHTF: button head thread forming

CARR: carriage

CCW: counter clockwise

CW: clockwise

DEG: degrees

ECM: electronic control module

EXT: external

FH: flat head

GA: gauge

HD: heavy-duty

HF: hex flange

HH: hex head

HHF: hex head flange

HHFTF: hex head flange thread forming

HJ: hex jam

HLH: hex lag head

HOC: height-of-cut

HSBH: hex socket button head

HSFH: hex socket flat head

HSH: hex socket head

HWH: hex washer head

HWHTF: hex washer head thread forming

HYD: hydraulic

LH: left hand

LP: Liquid Propane

NI: nylon insert

NPTF: national pipe thread fine

PFH: phillips flat head

PPH: phillips pan head

PPHTF: phillips pan head thread forming

PRH: phillips round head

PTH: phillips truss head

PTO: power-take-off

RH: right hand

ROPS: roll-over protection system

RRB: rear roller brush

SFH: slotted fillister head

SHH: slotted hex head

SHWH: slotted hex washer head

SPH: slotted pan head

SQH: square head

SRH: slotted round head

STD: standard

TAP: self tapping

TTH: torx truss head

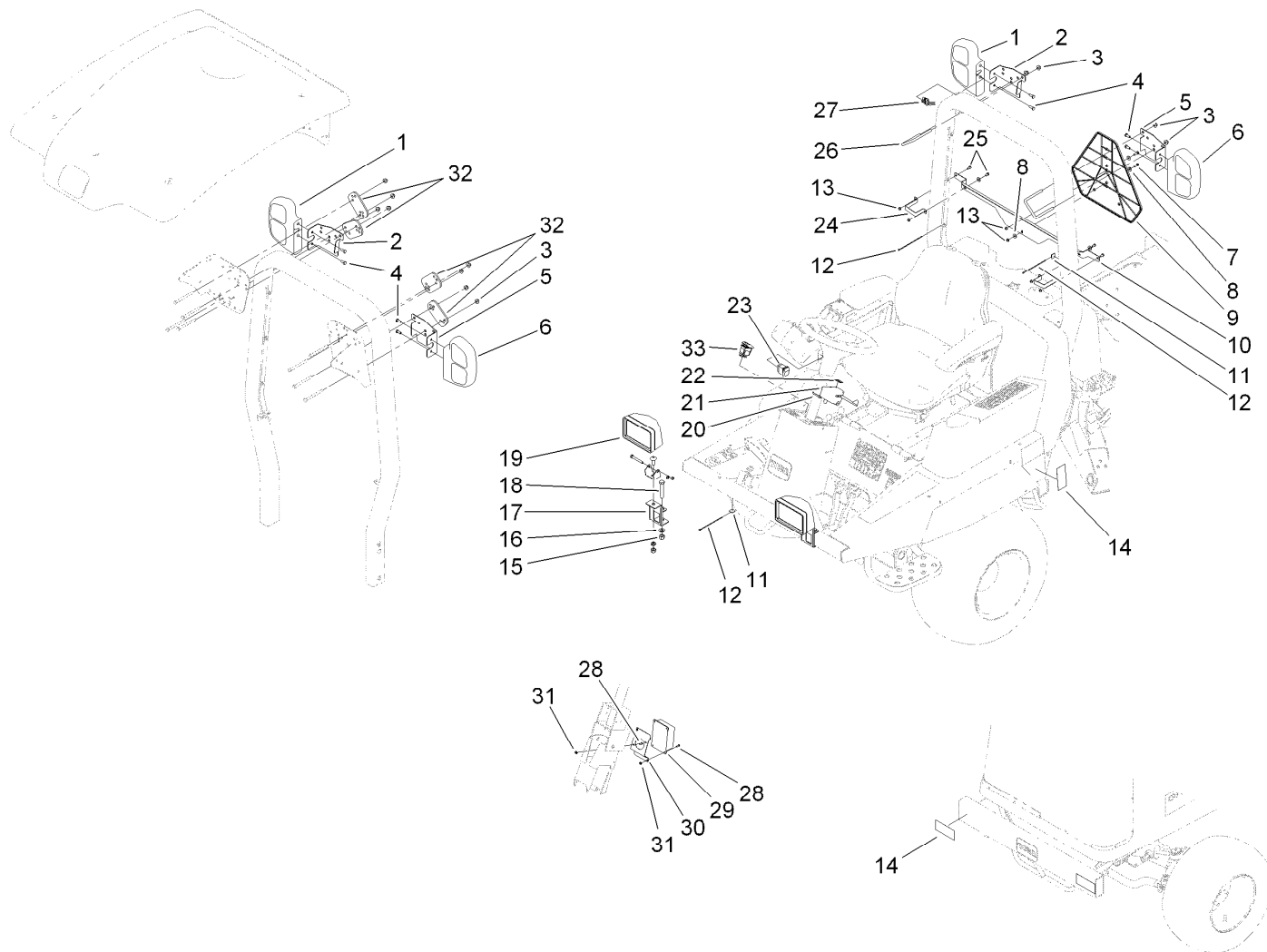
Contents

North American Road Light Assembly 4

Right Hand Tail Light Assembly No. 108-8007 5

Left Hand Tail Light Assembly No. 108-8008..... 6

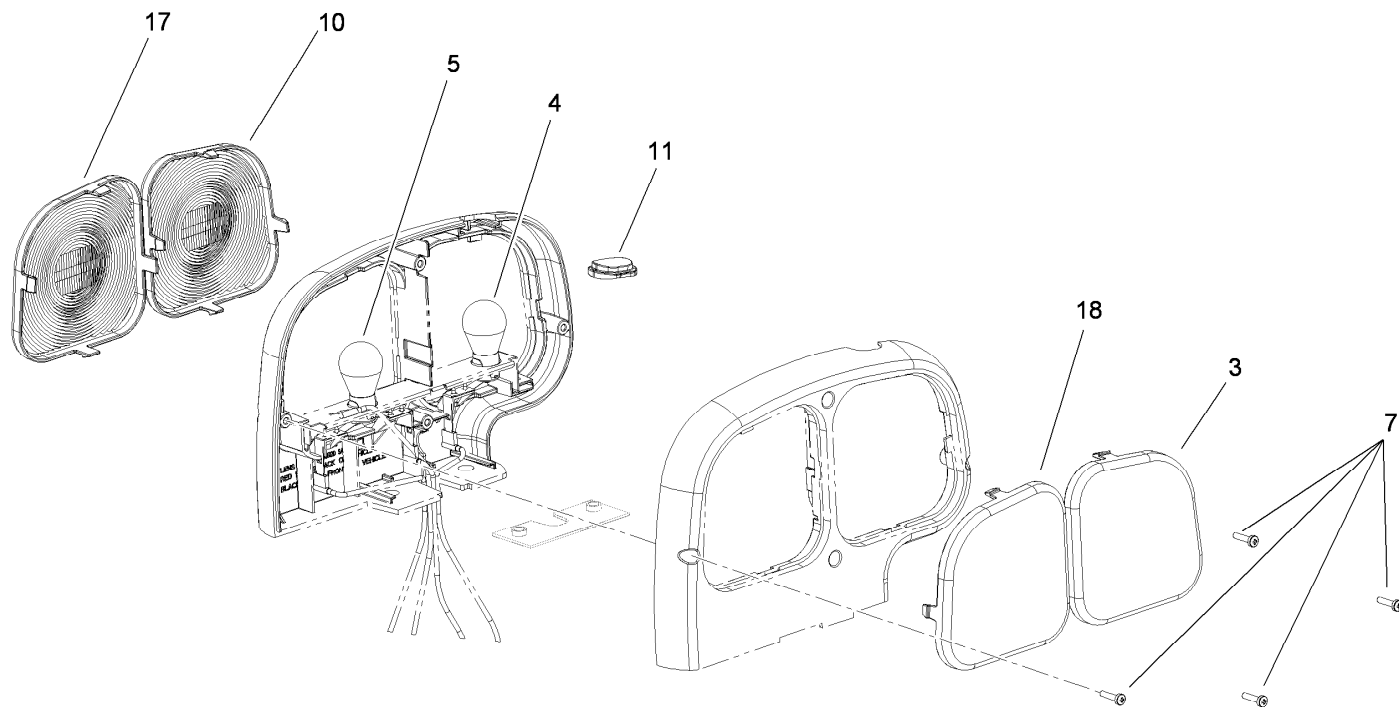
Head Light Assembly No. 114-5928 7



North American Road Light Assembly

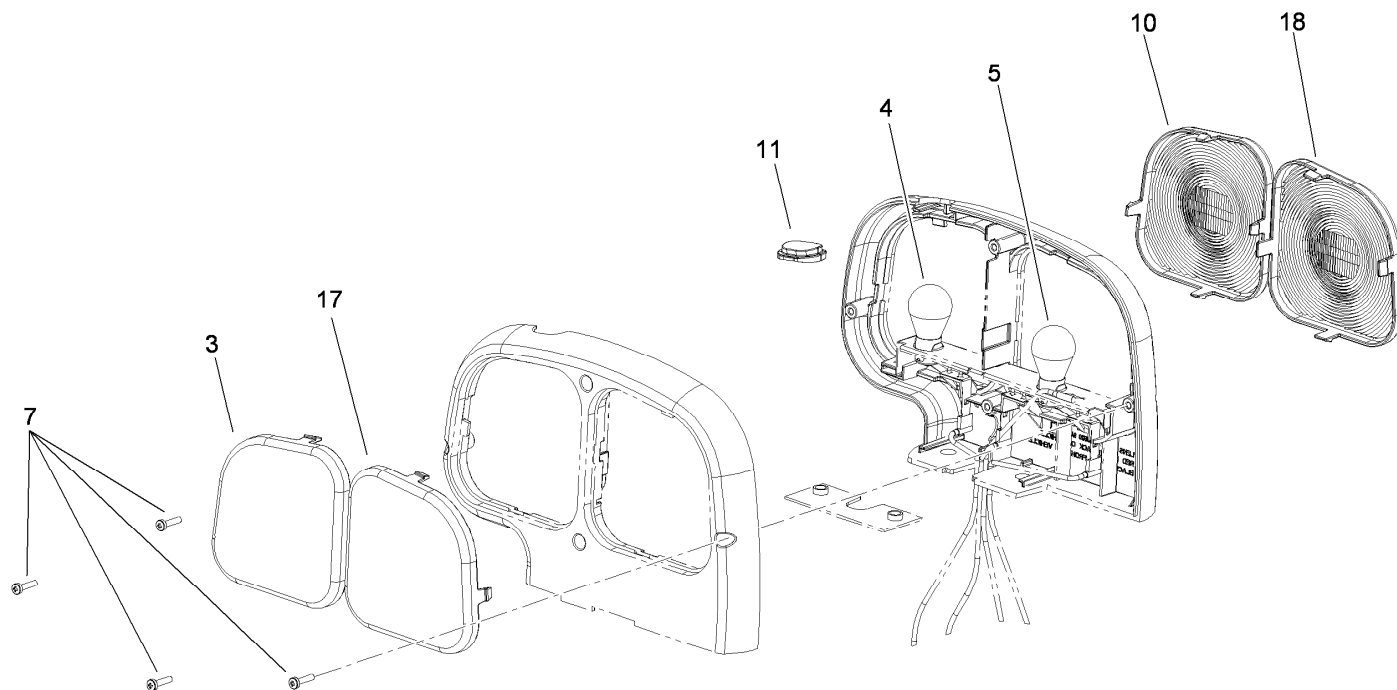
Ref.	Part Number	Qty.	Description
1	108-8007	1	Tail Light Flasher ASM
2	119-5315-03	1	Mount-Light, Right
3	104-8301	4	Nut-Flange, NI
4	33114-020	4	Screw-HH
5	119-5316-03	1	Mount-Light, Left
6	108-8008	1	Tail Light Flasher ASM
7	321-4	2	Screw-HH
8	3256-78	5	Washer-Flat
9	92-7760	1	Emblem-Vehicle, Slow Moving
10	119-5309-03	1	Mount-Smv
11	95-0690	7	Pad-Mounting
12	100-2894	20	Tie-Cable
13	3296-56	6	Nut-Lock, NI
14	108-8014	4	Tape-Reflective
15	3296-23	2	Nut-Lock, NI
16	3256-26	2	Washer-Flat
17	105-3290	2	Bracket-Headlight

Ref.	Part Number	Qty.	Description
18	325-12	2	Screw-HH
19	114-5928	2	Headlight ASM
20	3290-379	2	Tie-Cable
21	108-8005	1	Controller-Signal
22	119-5305	1	Decal-Signal
23	95-8999	1	Switch
24	119-8303-03	2	Strap-Smv
25	321-2	4	Screw-HH
26	100-7067	2	U-Bolt
27	119-8302	1	Harness-Wire
28	32105-8	4	Screw-SHH
29	105-4515	1	Flasher-Rate, Dual
30	105-3289	1	Bracket-Flasher
31	32149-7	4	Nut-Keps
32	108-8013	4	Plate-Backup
33	119-7769	1	Switch-Rocker, On-None-On



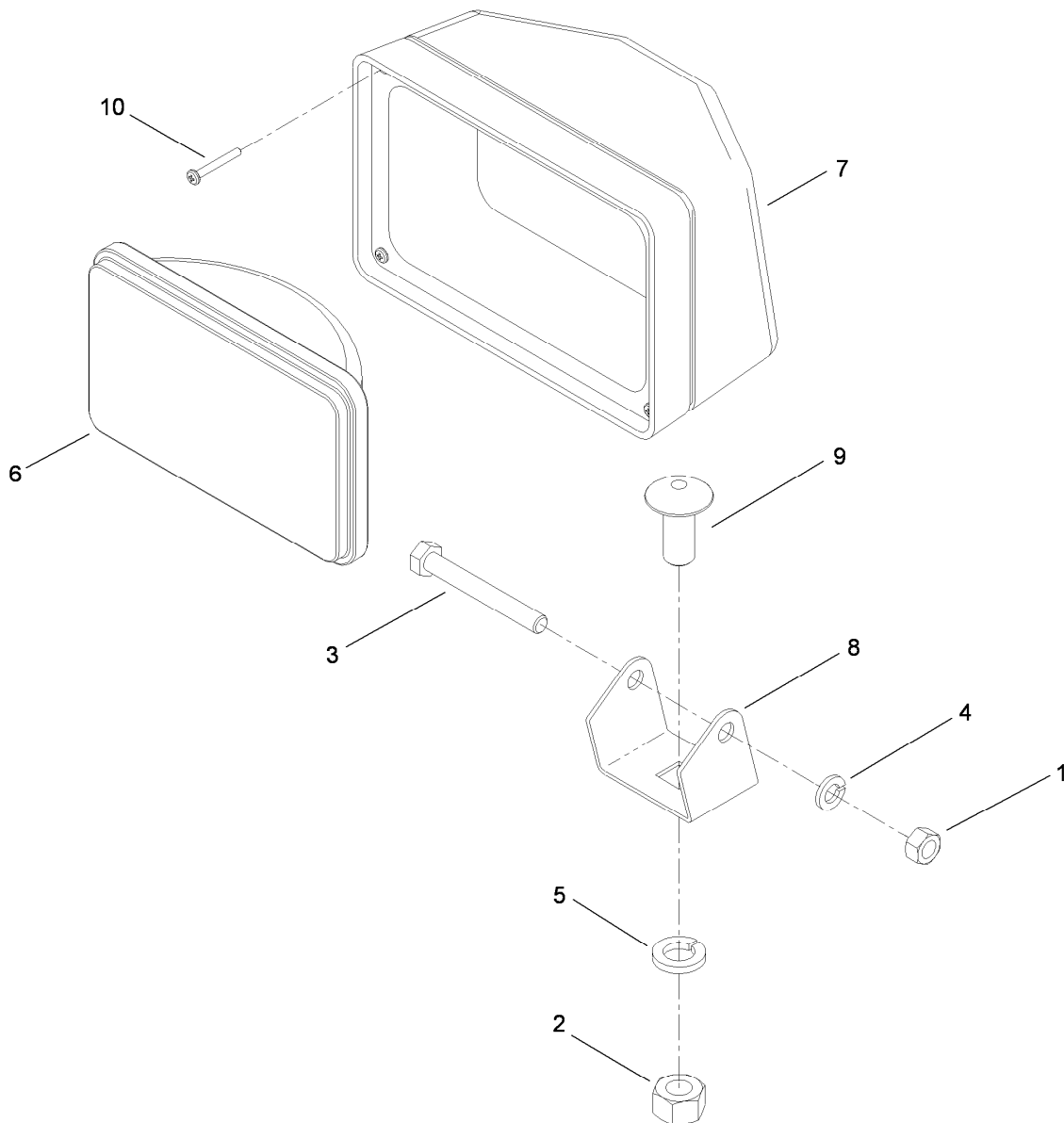
Right Hand Tail Light Assembly No. 108-8007

Ref.	Part Number	Qty.	Description
3	108-8056	1	Lens-Amber, Base
4	7228	1	Bulb
5	108-8054	1	Bulb
7	108-8053	4	Screw
10	108-8057	1	Lens-Amber, Cover
11	108-8055	1	Lens-Amber, Window
17	108-8060	1	Lens-Red, Base
18	108-8059	1	Lens-Black, Cover



Left Hand Tail Light Assembly No. 108-8008

Ref.	Part Number	Qty.	Description
3	108-8056	1	Lens-Amber, Base
4	7228	1	Bulb
5	108-8054	1	Bulb
7	108-8053	4	Screw
10	108-8057	1	Lens-Amber, Cover
11	108-8055	1	Lens-Amber, Window
17	108-8061	1	Lens-Red, Cover
18	108-8058	1	Lens-Black, Base



Head Light Assembly No. 114-5928

Ref.	Part Number	Qty.	Description
1	3217-6	1	Nut-Hex
2	3217-9	1	Nut-HH
3	322-12	1	Screw-HH
4	3253-4	1	Washer-Lock
5	3253-7	1	Washer-Lock
6	92-6595	1	Lamp-Beam, Sealed
7	92-6596	1	Bezel
8	92-6597	1	Bracket-Mounting
9	92-6598	1	Bolt-Carriage, Drilled
10	92-6599	4	Screw



Count on it.