



CE Kit

for Model 78551, 78552 or 78553 Blower and Drive Kit for a 48in, 52in or 60in Bagging System

Model No. 117-3825

Model No. 117-3826

Model No. 119-4240

Installation Instructions

Note: Determine the left and right sides of the machine from the normal operating position.

Note: This kit needs to be installed on model 78551, 78552 or 78553 Blower and Drive Kit to create a CE bagger.

Installation

Loose Parts

Use the chart below to verify that all parts have been shipped.

Procedure	Description	Qty.	Use
1	No parts required	—	Prepare the mower.
2	Warning decal Cover missing decal	1 1	Install the decals.
3	Blower cover Bolt (1/4 x 3/4 inch) Washer (1/4 inch) Washer (5/16 inch) Plastic plug Push nut (1/4 inch)	1 1 1 1 1 1	Install the covers.
4	Left guard Back guard Front guard Lower guard Bolt (5/16 x 3/4 inch) Flange nut (5/16 inch)	1 1 1 1 1 1	Install the guards.
5	Muffler guard	1	Install the muffler guard.

1

Preparing the Mower

No Parts Required

Procedure

1. Thoroughly clean mower deck. All debris must be removed to ensure the kit will fit properly.
2. Repair all bent or damaged areas and replace any missing parts.

2

Installing the Decals

Parts needed for this procedure:

1	Warning decal
1	Cover missing decal

Procedure

1. Remove the existing blower cover (Figure 2). Save the hardware.
2. Clean the area where the decals will go (Figure 1).
3. Install the decals as shown in Figure 1.

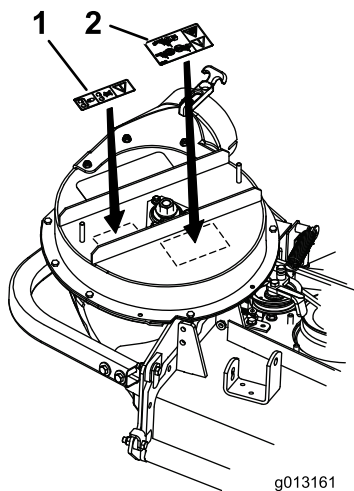


Figure 1

1. Cover missing decal
2. Warning decal

3

Installing the Covers

Parts needed for this procedure:

1	Blower cover
1	Bolt (1/4 x 3/4 inch)
1	Washer (1/4 inch)
1	Washer (5/16 inch)
1	Plastic plug
1	Push nut (1/4 inch)

Procedure

1. Remove the existing belt cover retaining knob and discard.
2. Remove the existing belt cover (Figure 2 or Figure 3).
3. Attach the bolt (1/4 x 3/4 inch) and a flat washer (5/16 inch) to the belt cover with a flat washer (1/4 inch) and push nut (1/4 inch) (Figure 2 or Figure 3).
4. Install the belt cover and tighten the bolt (1/4 x 3/4 inch) (Figure 2 or Figure 3).
5. Install the new blower cover using the existing hardware previously removed (Figure 2 or Figure 3).
6. Install the plastic plug in the existing belt cover (Figure 2 or Figure 3).

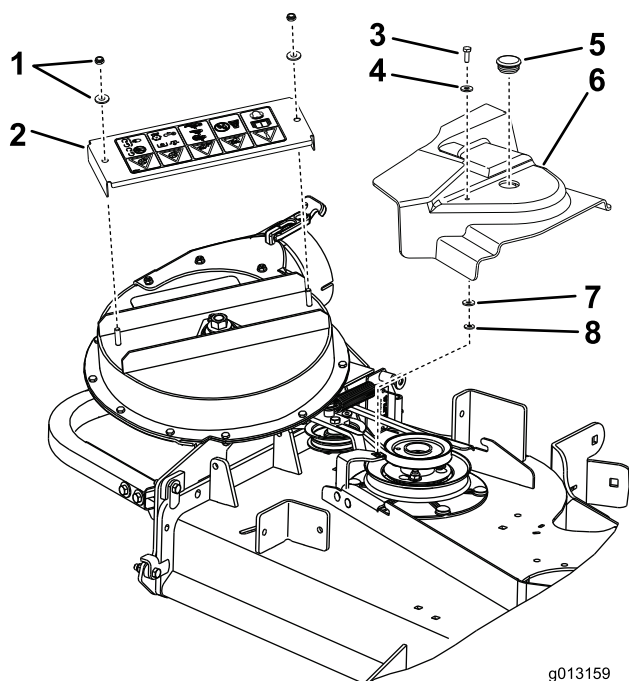


Figure 2

For model 78551 (48inch (122cm)) and 78552 (52inch (132cm))

- | | |
|--------------------------|------------------------|
| 1. Existing hardware | 5. Plastic plug |
| 2. New blower cover | 6. Existing belt cover |
| 3. Bolt (1/4 x 3/4 inch) | 7. Washer (1/4 inch) |
| 4. Washer (5/16 inch) | 8. Push nut (1/4 inch) |

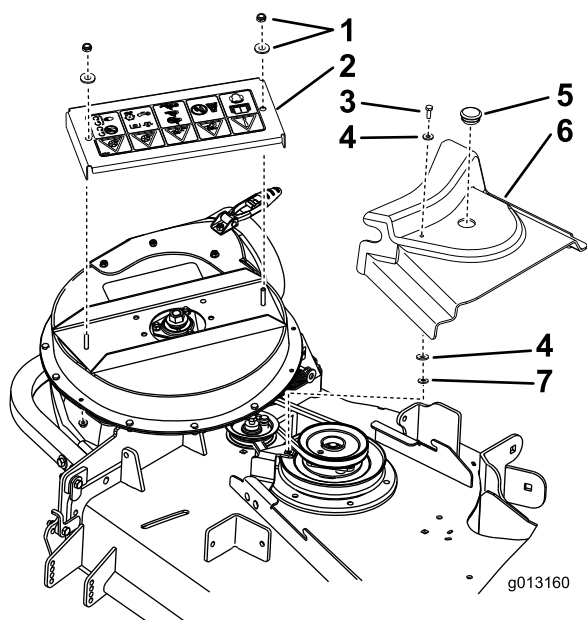


Figure 3

For model 78553 (60 inch (152 cm))

- | | |
|--------------------------|------------------------|
| 1. Existing hardware | 5. Plastic plug |
| 2. New blower cover | 6. Existing belt cover |
| 3. Bolt (1/4 x 3/4 inch) | 7. Push nut (1/4 inch) |
| 4. Washer (5/16 inch) | |

4

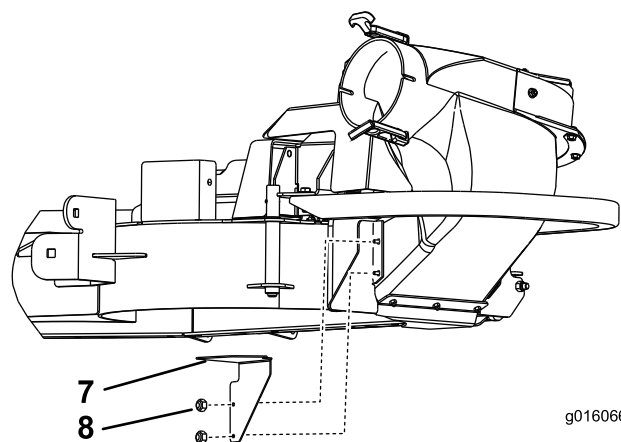
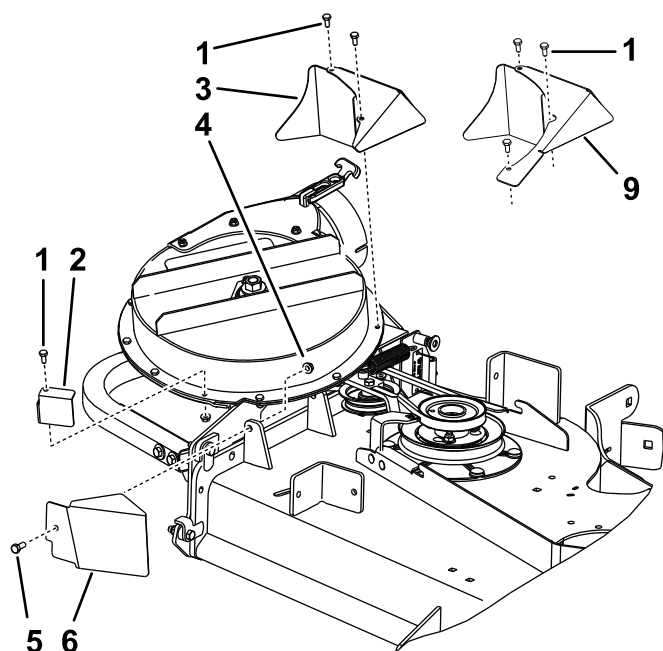
Installing the Guards

Parts needed for this procedure:

1	Left guard
1	Back guard
1	Front guard
1	Lower guard
1	Bolt (5/16 x 3/4 inch)
1	Flange nut (5/16 inch)

Procedure

1. Remove the existing hardware around the blower for the left guard, lower guard and back guard (Figure 4 or Figure 5). Save all existing hardware
2. Install the left guard with existing hardware (Figure 4 or Figure 5).
3. Install the back guard with existing hardware (Figure 4 or Figure 5).
4. Install the lower guard with existing hardware (Figure 4 or Figure 5).
5. Install the front guard with a bolt (5/16 x 3/4 inch) and a flange nut (5/16 inch) (Figure 4 or Figure 5).

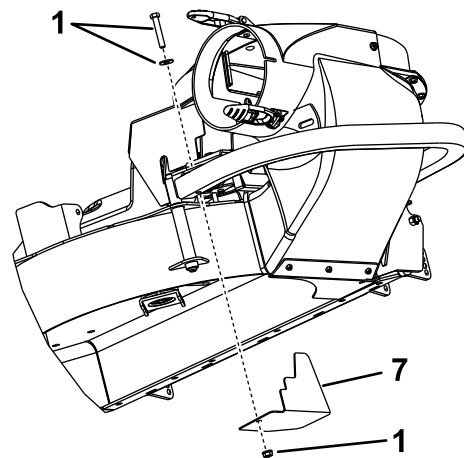
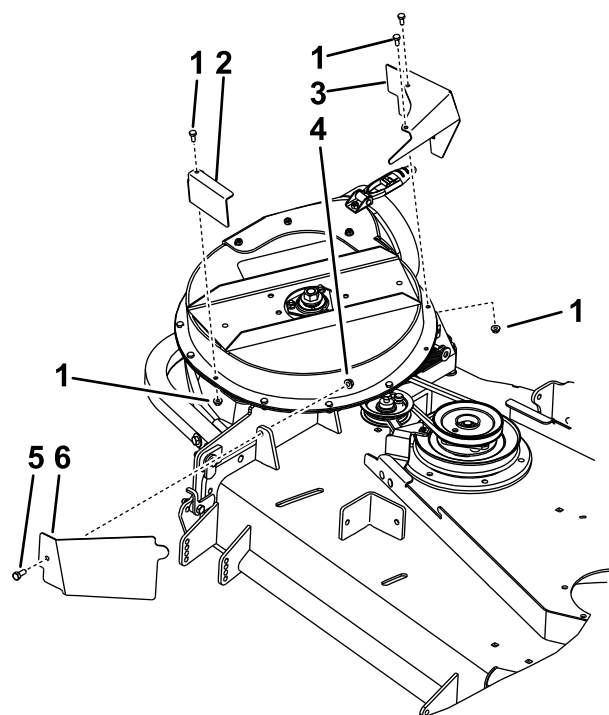


g016066

Figure 4

For model 78551 (48inch (122cm)) and 78552 (52inch (132cm))

- | | |
|--------------------------------|--------------------------------|
| 1. Existing hardware | 6. Front guard |
| 2. Left guard | 7. Lower guard |
| 3. Back guard, 52 inch (132cm) | 8. Existing nuts |
| 4. Flange nut (5/16 inch) | 9. Back guard, 48 inch (122cm) |
| 5. Bolt (5/16 x 3/4 inch) | |



G011760

Figure 5

For model 78553 (60 inch (152 cm))

- | | |
|---------------------------|---------------------------|
| 1. Existing hardware | 5. Bolt (5/16 x 3/4 inch) |
| 2. Left guard | 6. Front guard |
| 3. Back guard | 7. Lower guard |
| 4. Flange nut (5/16 inch) | |

5

Installing the Muffler Guard

Parts needed for this procedure:

1	Muffler guard
---	---------------

Procedure

1. Remove the existing muffler guard and save the hardware. Save the existing muffler guard for use when the bagger is removed.
2. Install the new muffler guard with the previously removed hardware (Figure 6).

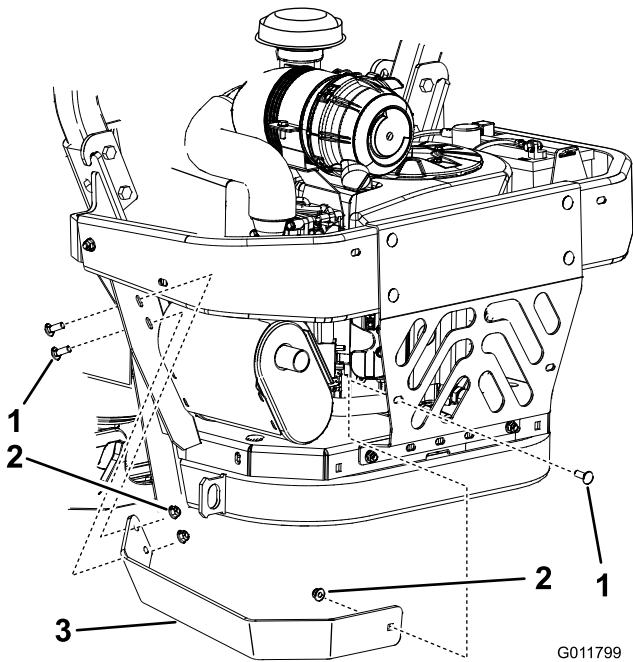


Figure 6

1. Carriage bolt
2. Flange nut
3. New muffler guard

Notes:

Notes:



Count on it.