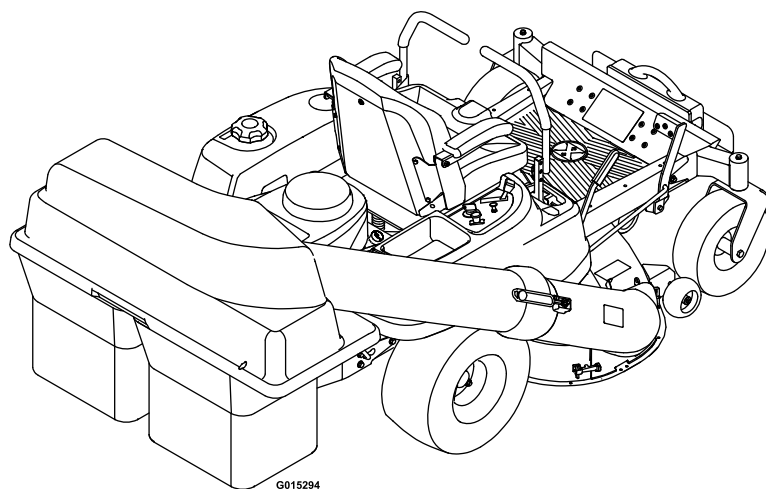




QUEST™ BAGGER

Model No. QT50—Serial No. 920000 and Up

Picture below may not reflect actual product.



Parts Manual

Ordering Replacement Parts

To order replacement parts, please supply the part number, the quantity, and the description of each part desired.

Understanding Reference Numbers

Each identified part in an illustration has a reference number. The reference number for a part also appears in the parts list, along with other information about the part.

This catalog uses two special reference number formats, one to indicate parts in a service assembly and another to indicate the quantity of a given part in an illustration.

Service Assembly Reference Numbers

Parts in service assemblies have reference numbers in the form a:b. The a represents the reference number of the entire service assembly and the b represents a sequential number unique to each part within the service assembly.

For example, a wheel assembly might be identified by reference number 6, the tire by 6:1, the valve by 6:2, and the wheel by 6:3. When you order the assembly identified by reference number 6, you receive all parts identified by reference numbers 6:1, 6:2, and 6:3. However, you may also order any part individually. Reference numbers of this type appear in illustration and in parts lists.

Reference Numbers Indicating Quantity

In an illustration, if a reference number indicates more than one part, the reference number has the form nX y. The n represents the quantity of the part, the X is the multiplication symbol, and the y represents the reference number.

For example, in an illustration, the reference number 2X 37 means that two of the parts identified by reference number 37 are indicated.

List of Abbreviations

AR: as required

ASM: assembly

BBC: blade brake control

BHTF: button head thread forming

CARR: carriage

CCW: counter clockwise

CW: clockwise

DEG: degrees

DPA: Dual Point Adjustment

ECM: electronic control module

EXT: external

FH: flat head

GA: gauge

HD: heavy-duty

HF: hex flange

HH: hex head

HHF: hex head flange

HHFTF: hex head flange thread forming

HJ: hex jam

HLH: hex lag head

HOC: height-of-cut

HSBH: hex socket button head

HSFH: hex socket flat head

HSH: hex socket head

HWH: hex washer head

HWHTF: hex washer head thread forming

HYD: hydraulic

LH: left hand

LP: Liquid Propane

NI: nylon insert

NPTF: national pipe thread fine

PFH: phillips flat head

PPH: phillips pan head

PPHTF: phillips pan head thread forming

PRH: phillips round head

PTH: phillips truss head

PTO: power-take-off

RH: right hand

ROPS: roll-over protection system

RRB: rear roller brush

SFH: slotted fillister head

SHH: slotted hex head

SHWH: slotted hex washer head

SPH: slotted pan head

SQH: square head

SRH: slotted round head

STD: standard

TAP: self tapping

TTH: torx truss head

Touch Up Paint

Exmark black touch up spray paint – gloss black.

Exmark red touch up paint (spray paint – P/N 1-850337 - .6 oz liquid bottle – P/N 103-9140).

EXMARK PARTS PLUS

PARTS

OVERNIGHT

OR *FREE**

If your Exmark dealer does not have the Exmark part in stock, Exmark will get the parts to the dealer the next business day or the part will be FREE Guaranteed!! (Some restrictions apply. See your participating Exmark Dealer for details.)

Contents

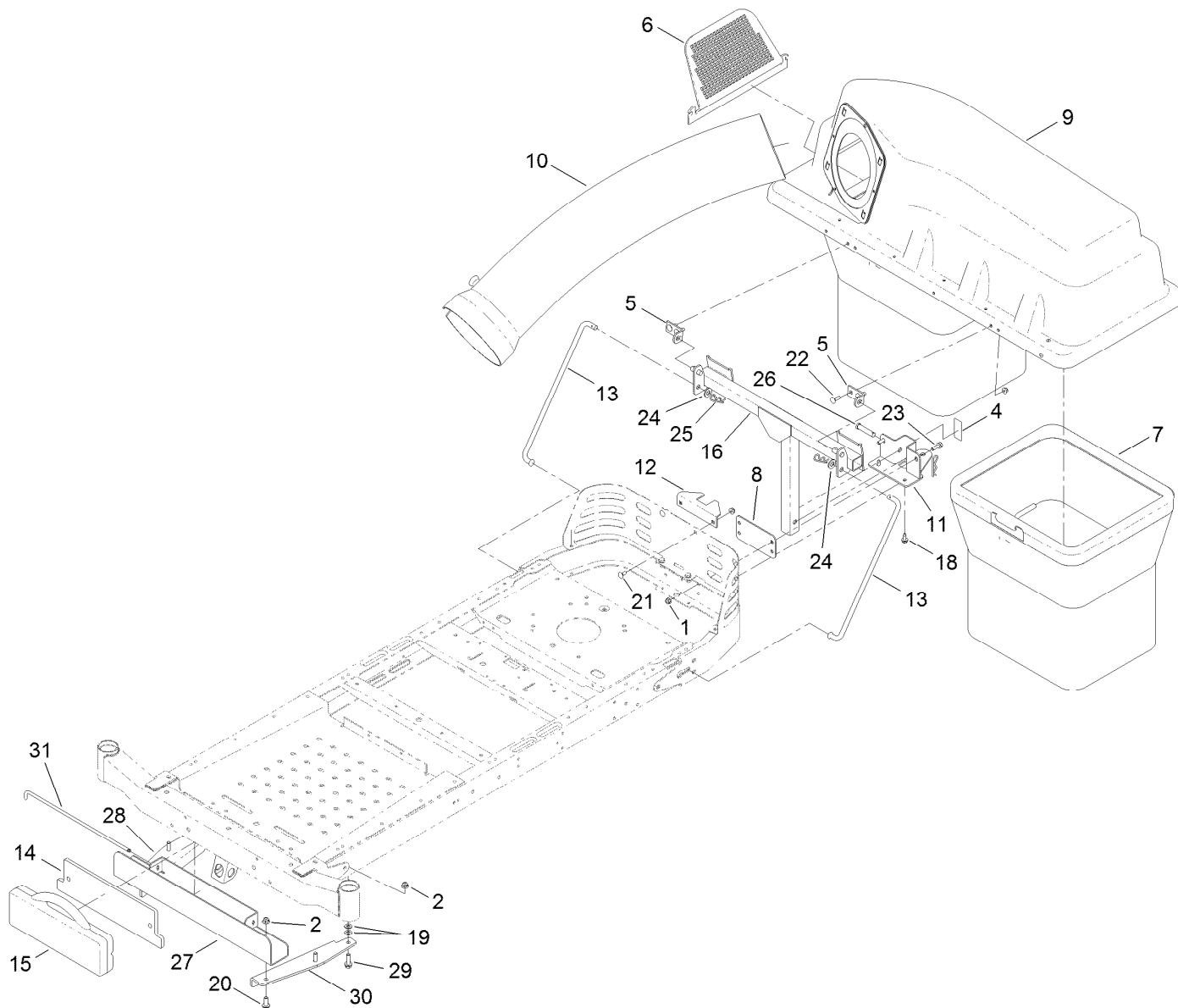
50 Inch Bagger Assembly 5

Bag Assembly No. 112-3994 6

Bagger Top Assembly No. 117-5370..... 7

50 Inch Chute Alignment..... 8

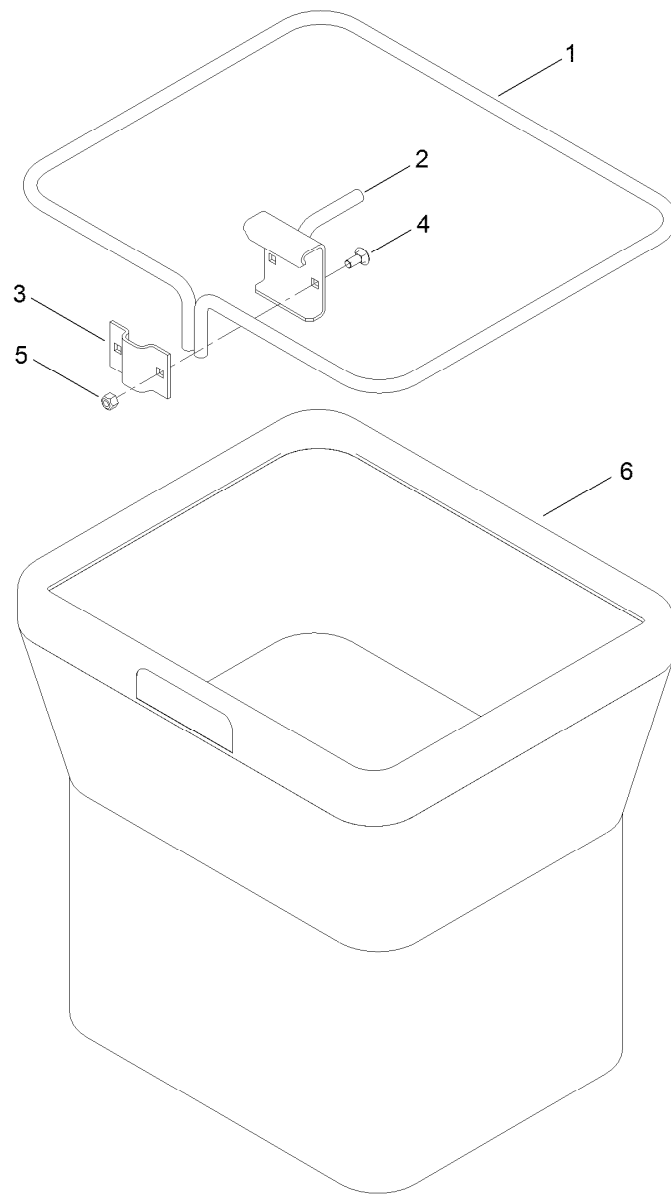
50 Inch Chute Assembly No. 119-8864 9



50 Inch Bagger Assembly

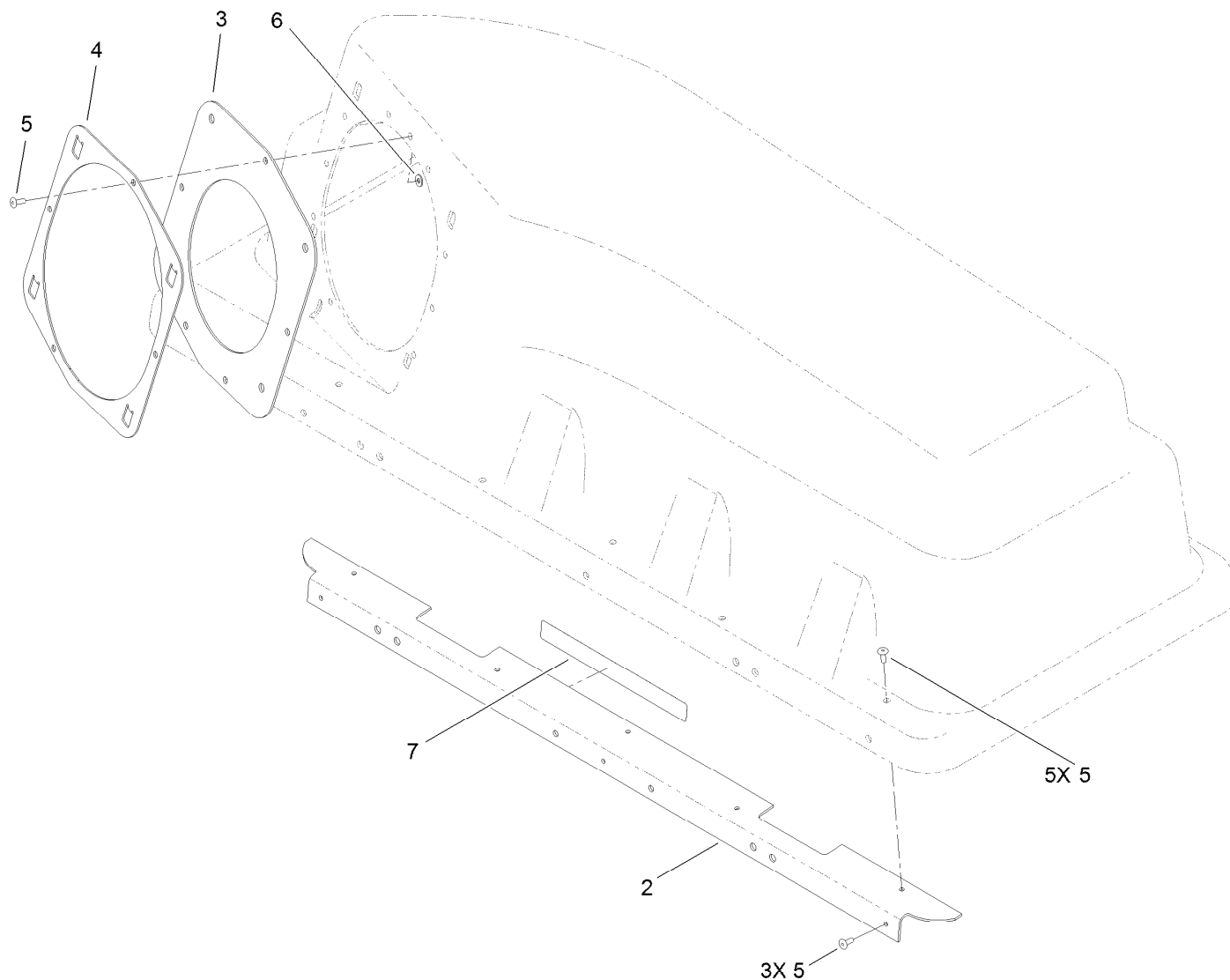
Ref.	Part Number	Qty.	Description
1	104-8300	8	Nut-Flange, NI
2	104-8301	4	Nut-Flange, NI
4	109-7076	1	Decal-Maximum Drawbar Pull
5	112-3987	2	Bracket-Pivot, Hopper
6	112-3993	1	Screen-Bagger
7	112-3994	2	Bag ASM
8	117-5355-03	1	Plate
9	117-5370	1	Bagger Top ASM
10	112-3995	1	Tube-Bagger
11	119-8850-03	1	Support-Bagger
12	119-8852-03	1	Bracket-Stabilizer
13	119-8853	2	Rod-Support
14	120-5495-03	1	Plate
15	109-9742-03	1	Weight-35 Pound

Ref.	Part Number	Qty.	Description
16	120-2292-03	1	Frame-Pivot
18	32144-70	2	Screw-HWHTF
19	3256-24	4	Washer-Flat
20	3234-42	2	Screw-HHF
21	3230-1	2	Bolt-CARR
22	3230-2	4	Bolt-CARR
23	3234-29	2	Screw-HHF
24	3256-26	2	Washer-Flat
25	3290-355	3	Pin-Hair
26	92-2739	1	Pin-Clevis
27	120-5491-03	1	Channel-Bagger Weight
28	120-5502-03	1	Bracket-Bagger Weight, RH
29	119-4061	4	Screw-HHF
30	120-5497-03	1	Bracket-Bagger Weight
31	109-9759	1	Pin-Weight



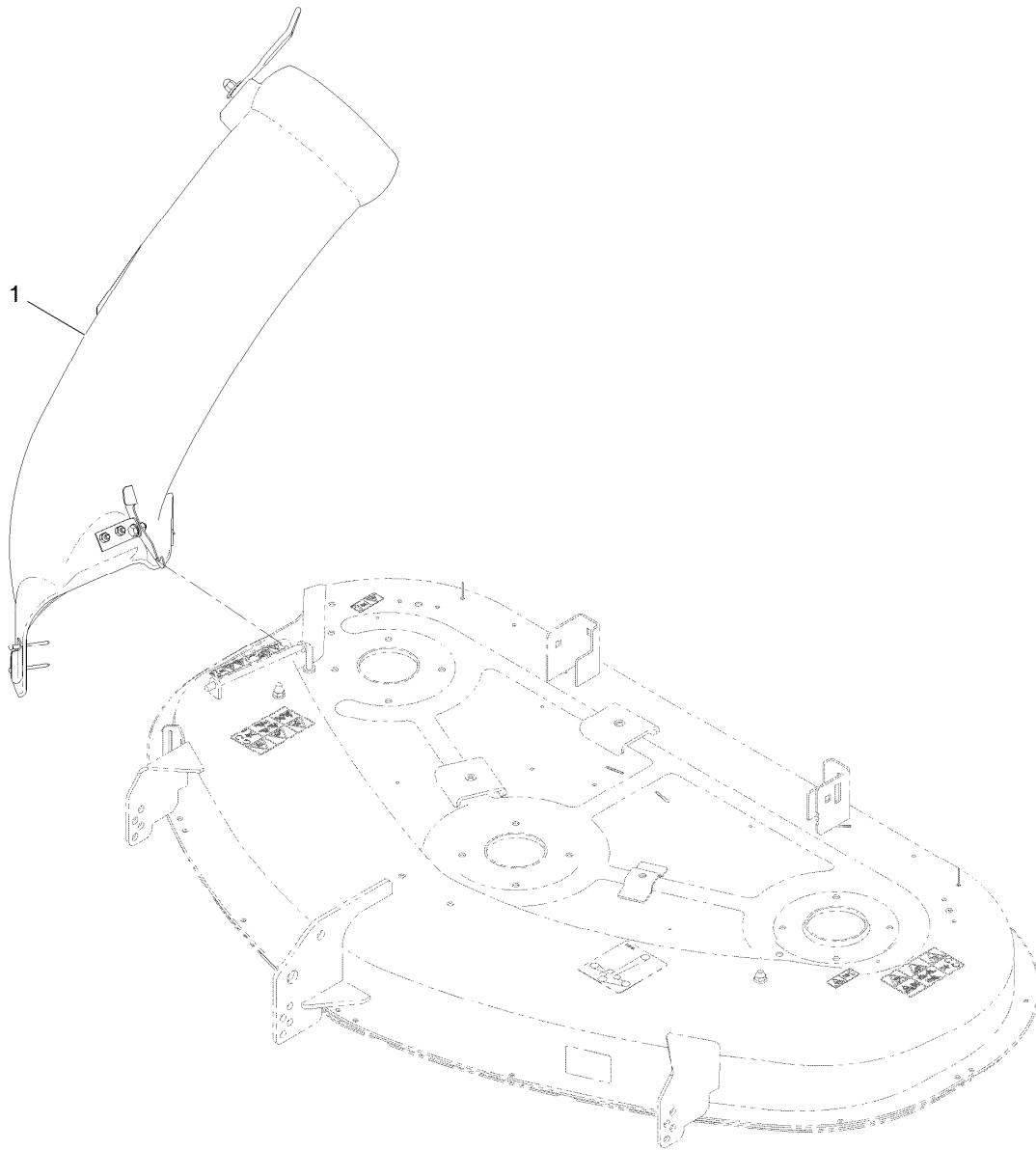
Bag Assembly No. 112-3994

<i>Ref.</i>	<i>Part Number</i>	<i>Qty.</i>	<i>Description</i>
1	114972-03	1	Frame-Bag
2	112-4012-03	1	Hanger ASM
3	114974-03	1	Clamp
4	3230-1	2	Bolt-CARR
5	3296-29	2	Nut-Lock, NI
6	110-6674	1	Bag



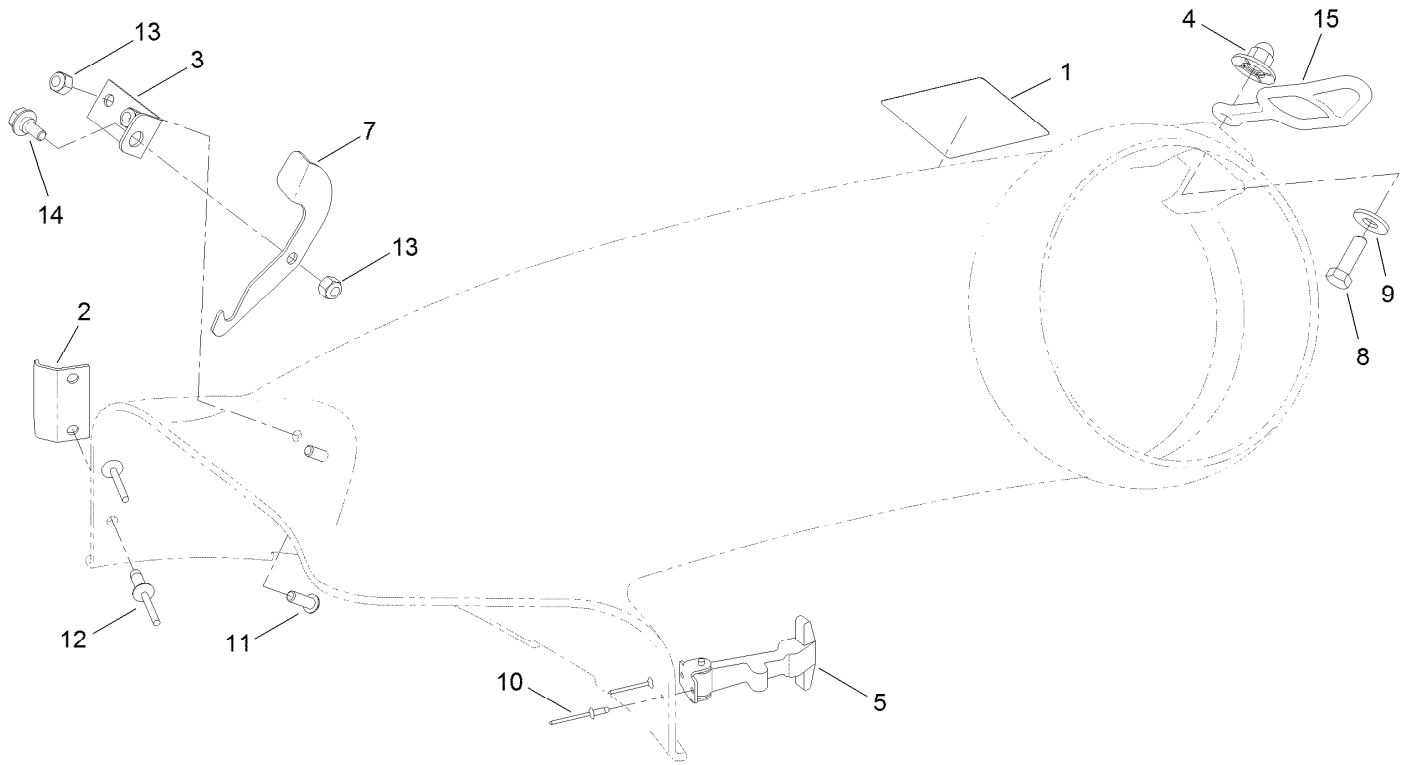
Bagger Top Assembly No. 117-5370

Ref.	Part Number	Qty.	Description
2	116-1242-03	1	Stiffener-Bagger Top
3	112-4001	1	Gasket
4	112-4000-03	1	Ring-Retainer
5	114439	12	Rivet-Pop
6	9202704	4	Washer
7	109-6809	1	Decal-Caution Bagger



50 Inch Chute Alignment

<i>Ref.</i>	<i>Part Number</i>	<i>Qty.</i>	<i>Description</i>
1	119-8864	1	50 Inch Bagger Chute ASM



50 Inch Chute Assembly No. 119-8864

Ref.	Part Number	Qty.	Description
1	110-6691	1	Decal-Danger
2	112-3981	1	Bracket-Elbow
3	112-4038	1	Plate-Pivot
4	114-9015	1	Nut-Impeller
5	117344	1	Handle ASM
7	120-2216	1	Latch
8	322-5	1	Screw-HH
9	3256-3	1	Washer-Flat
10	3269-31	2	Rivet-Pop
11	3274-69	2	Screw-HSBH
12	3290-412	2	Rivet
13	3296-42	3	Nut-Lock, NI
14	40-8350	1	Screw
15	82-5690	1	Retainer-Duct

Notes:

Notes:

SEE EXMARK'S COMPLETE LINE OF ACCESSORIES AND OPTIONS

MID-MOUNT RIDING ACCESSORIES AND OPTIONS

CUSTOM RIDE SEAT SUSPENSION SYSTEM	OPERATOR CONTROLLED DISCHARGE
FULL SUSPENSION SEAT	ROLL OVER PROTECTION SYSTEM (ROPS)
DECK LIFT ASSIST KIT	SUN SHADE
HITCH KIT	TRASH CONTAINER
LIGHT KIT	TURF STRIPER
12V POWER PORT	ULTRA VAC COLLECTION SYSTEM
MICRO-MULCH SYSTEM	ULTRA VAC QUICK DISPOSAL SYSTEM

OUT-FRONT RIDING ACCESSORIES AND OPTIONS

CUSTOM RIDE SEAT SUSPENSION SYSTEM	SNOW BLADE
DUAL-TAIL WHEEL	SNOWBLOWER
FLOOR PAN EXTENDER	SUN SHADE
HITCH KIT	TRASH CONTAINER
LIGHT KIT	ULTRA VAC COLLECTION SYSTEM
MICRO-MULCH SYSTEM	ULTRA VAC QUICK DISPOSAL SYSTEM
ROLL OVER PROTECTION SYSTEM (ROPS)	WEATHER CAB

WALK-BEHIND ACCESSORIES AND OPTIONS

GRASS CATCHER	TURF STRIPER
MICRO-MULCH SYSTEM	STANDON

Place Model No. and Serial No.
Label Here (Included in the Literature
Pack) or Fill in Below

Model No. _____

Serial No. _____

Date Purchased _____

Engine Model No. and Spec. No. _____

Engine Serial No. (E/No) _____

© 2011 Exmark Mfg. Co., Inc.
Industrial Park Box 808
Beatrice, NE 68310
All Rights Reserved

Part No. 4500-883 Rev. A
(402) 223-6300
Fax (402) 223-5489
Printed in the USA.

