



Tilt Kit
Mauser KS-524 Cab
Model No. 02886

Form No. 3368-429 Rev A

Installation Instructions

Safety

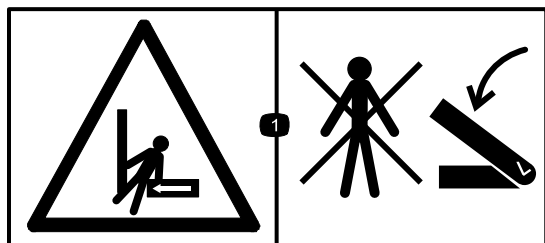
This kit is intended to be used by professional, hired operators in commercial applications. It is primarily

designed to raise the cab and operator platform to allow servicing and maintenance of the machine. It is not designed for lifting any non standard options fitted to the machine or use in any other application.

Safety and Instructional Decals



Safety decals and instructions are easily visible to the operator and are located near any area of potential danger. Replace any decal that is damaged or lost.



111-0525

1. Crushing hazard—keep bystanders a safe distance from the machine.

Installation

1. Ensure the machine is on level ground and all the cutter heads are lowered to the ground.
2. Apply the parking brake, switch off the engine and remove the ignition key.
3. To raise platform, if fitted with cab, remove doors. Remove rear retaining pins from the L.H. and R.H. cab support bracket. Loop a suitable lifting strap through sides of cab and over roof. Secure with a hoist with a minimum lifting capacity of 350 kg (772 lb) (Figure 1).

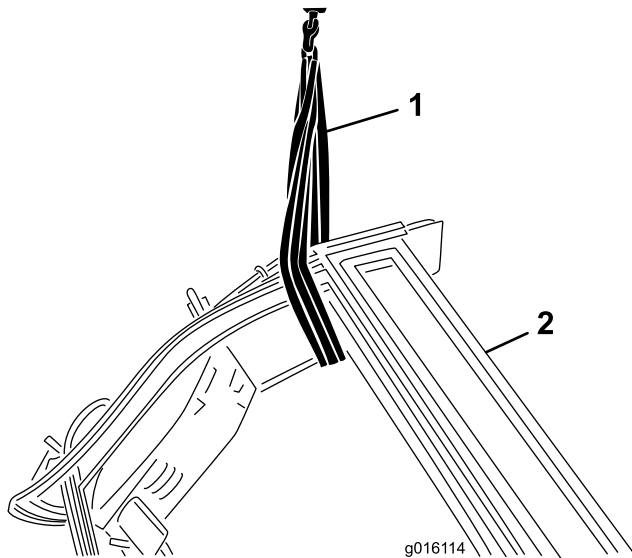


Figure 1

1. Lifting strap
2. Cab

4. Underneath the platform, remove the M8 nuts and washers from the front seat bolts, as shown in Figure 2.

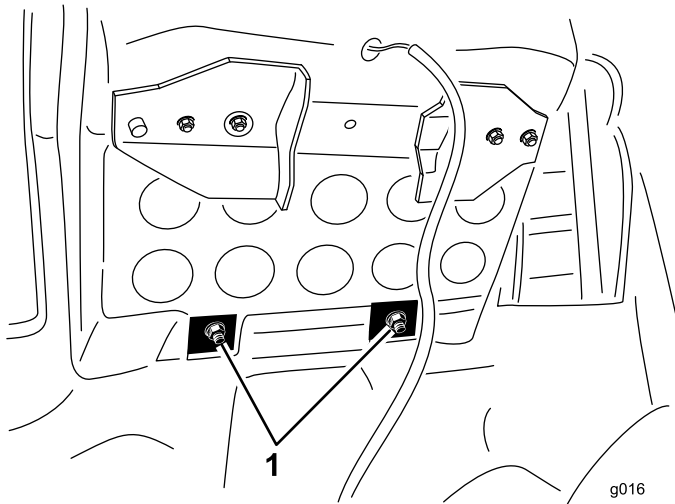


Figure 2

1. M8 nuts and washers

Note: On older models with M8 x 35 bolts, the bolts need to be replaced with the supplied M8 x 50 bolts (Figure 3, Item 1). To replace the bolts, the seat must be removed. To take off the seat, remove the nuts underneath the platform, then lift the seat off of the platform. Remove the nuts and washers from the front bolts, replace them with the longer bolts supplied and reassemble the seat as before.

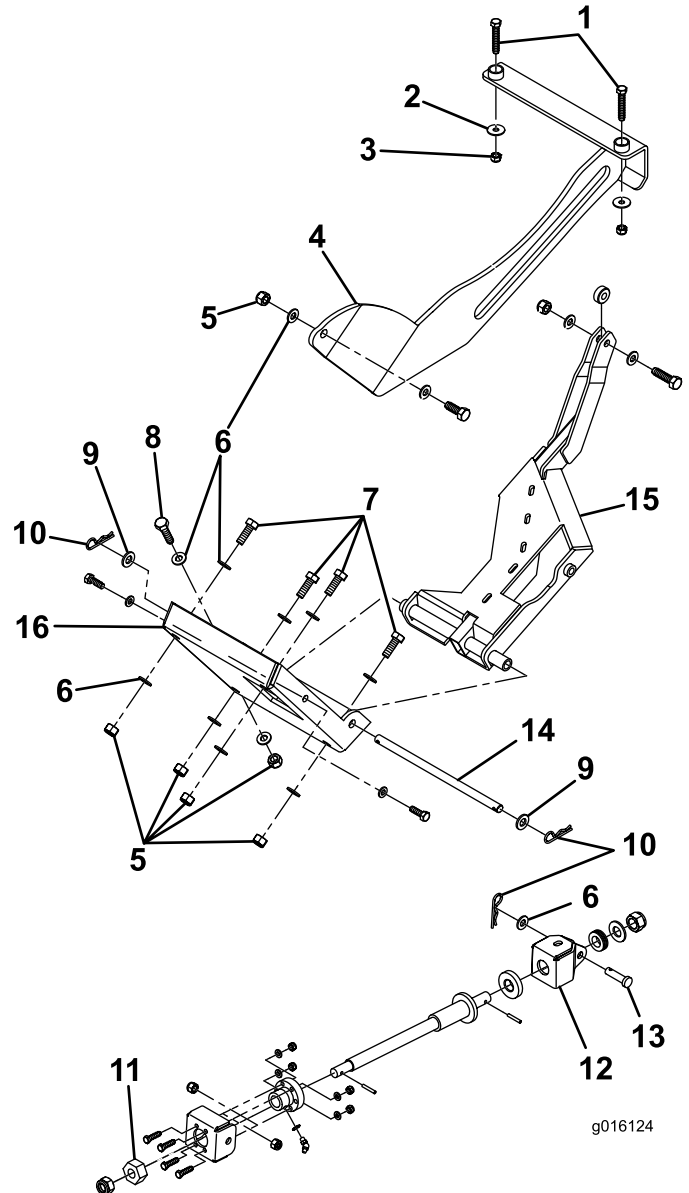


Figure 3

- | | |
|----------------------|--------------------------|
| 1. Bolt, M8 x 50 | 9. Washer, plain M12 |
| 2. Washer, plain | 10. Spring clip, "R" |
| 3. Nut, M8 | 11. Large nut, M14 |
| 4. Guide arm | 12. Universal joint yoke |
| 5. Nut, M10 x 1.5 | 13. Pin |
| 6. Washer, plain M10 | 14. Fuse pin |
| 7. Bolt, M10 x 30 | 15. Lever arm |
| 8. Bolt, M10 x 40 | 16. Console |

- Remove the front seat support bracket and the gas strut and discard (Figure 4).

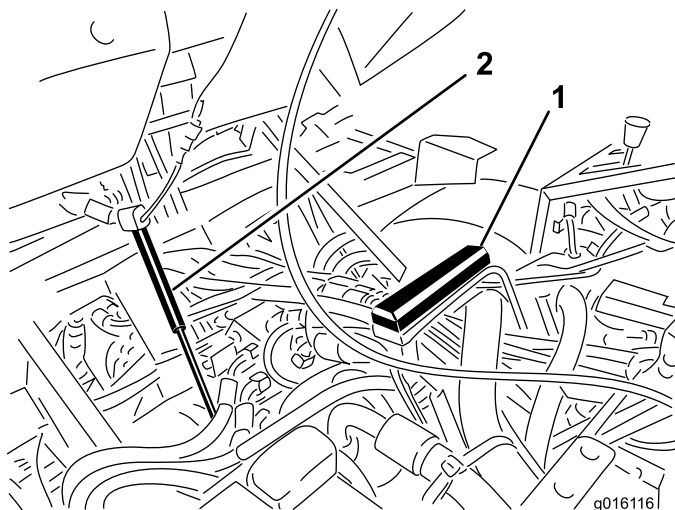


Figure 4

- Front seat support bracket
- Gas strut

- Remove the M12 x 35 bolt, nut and washers from bottom right (Figure 5). This will be replaced by a M10 X 40 bolt, nut, and washers (Figure 3, Items 8, 6 and 5) when console (Figure 6, Item 16) is fitted.

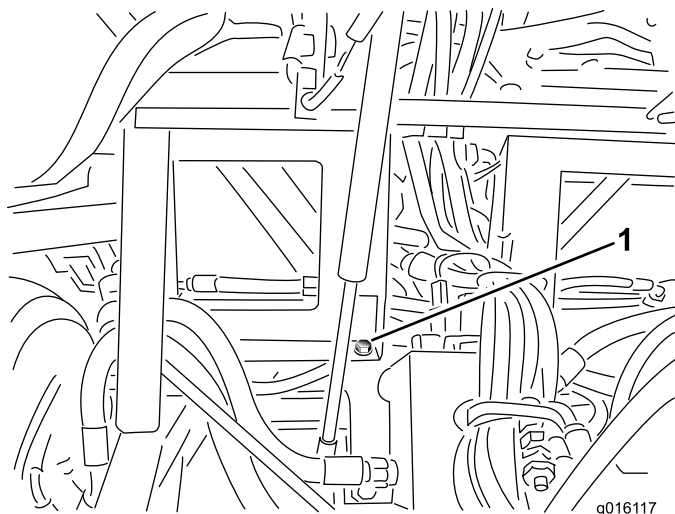


Figure 5

- M12 x 35 bolt, nut and washers

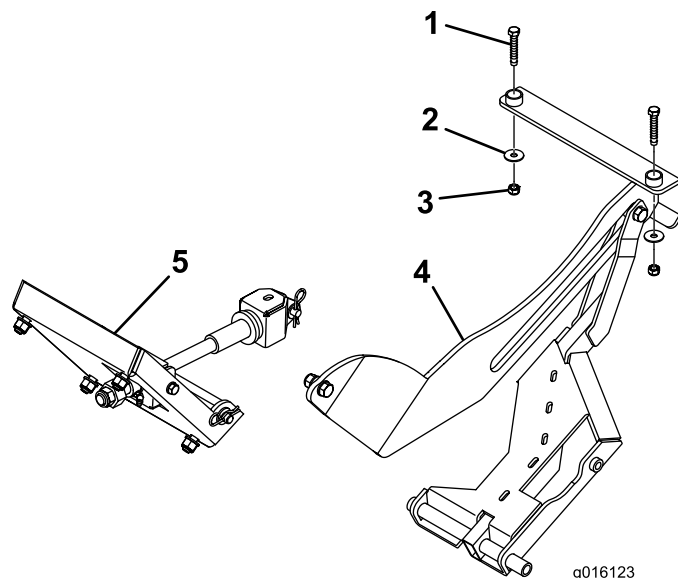


Figure 6

- Bolt, M8 x 50
- Washer, plain 5/16
- Nut, M8
- Lever arm
- Console

- Remove long fuse pin (Figure 3, Item 14) from console (Figure 6, Item 16) by pulling out the clip and removing the washer (Figure 3, Items 10 and 9) from one end and sliding the pin out.
- Place console (Figure 6, Item 16) in position. Locate this by using the hole left by the M12 x 35 bolt in bracket (Figure 5).

⚠ WARNING

PREVENT ACCIDENTS - Always wear eye protection when drilling.

- On older models, three holes need to be drilled in locations shown in Figure 7.

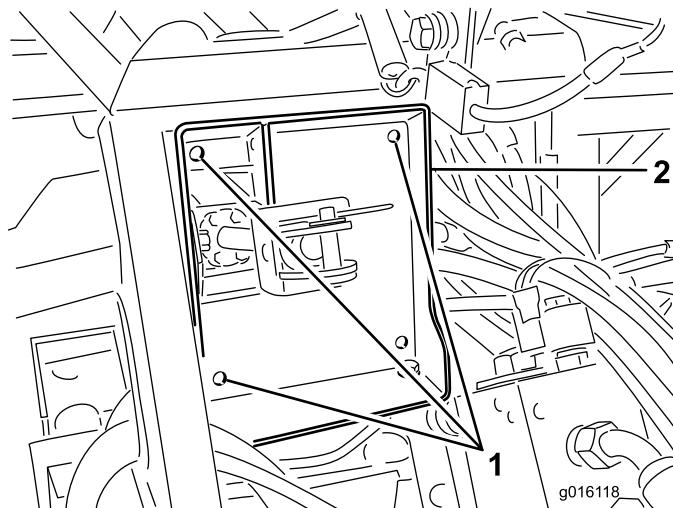


Figure 7

- Drill these hole
- Console

10. Secure console (Figure 6, Item 16) in place using M10 bolts, nuts and washers supplied (Figure 3, Items 7, 6 and 5).
11. Lift up the guide arm (Figure 3, Item 4) and locate the M8 x 50 bolts fitted to the seat using the nuts and washers supplied (Figure 3, Items 2 and 3), but leave loose (Figure 8).

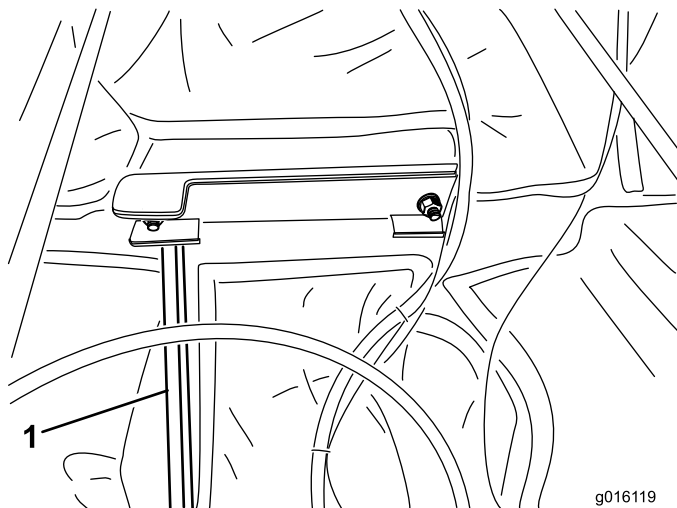


Figure 8

1. Guide arm

12. Locate the other end of the guide arm (Figure 3, Item 4) to the hole left by removing the gas strut from the platform. Secure with bolt, washer and nut. (Figure 3, Items 7, 6 and 5). Leave this loose (Figure 9).

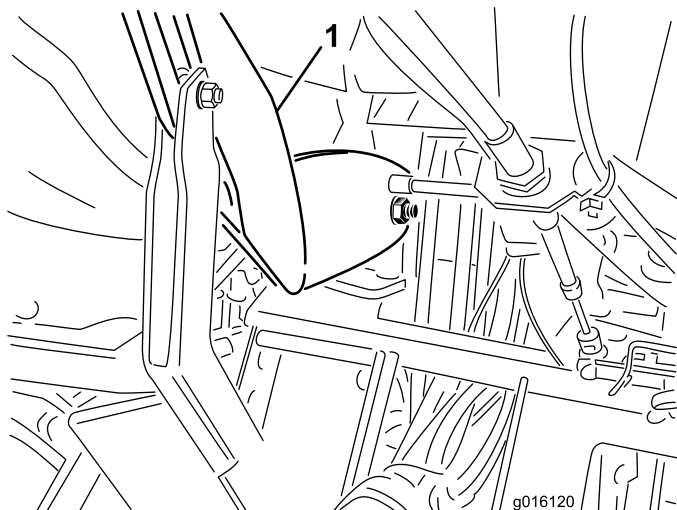


Figure 9

1. Guide arm

13. Join the lever arm and console (Figure 6, Items 15 and 16) together by sliding the long fuse pin (Figure 3, Item 14) from the center side of the machine through the holes in both items and secure

using washers and clips (Figure 3, Items 9 and 10). The platform may have to be raised or lowered to line up the holes before the fuse pin can be fitted.

14. Join the Universal Joint Yoke (Figure 3, Item 12) to the Lever Arm (Figure 3, Item 15) with the short pin (Figure 3, Item 13). Using a 30mm socket, adjust the Large Nut (Figure 3, Item 11) in order to line up the holes in both items. Secure pin using washer and clip (Figure 3, Item 6 and 23).
15. Attach decal, supplied with kit, near the spindle (Figure 10).

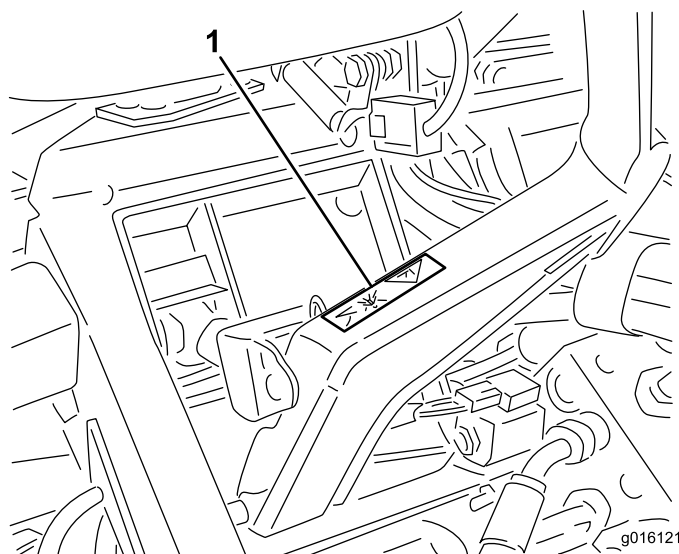


Figure 10

1. Decal

Operation

⚠ WARNING

Warning of Crushing Hazard when platform is being lowered. Keep body clear.

1. Keep bystanders clear when raising and lowering the platform and cab.
2. To operate the lift mechanism, use the 30mm socket:
 - Rotate the spindle anti clockwise to raise the platform and cab.
 - Rotate the spindle clockwise to lower the platform and cab.
3. Do not work under the platform unless it is fully raised.
4. When the platform and cab are lowered, always ensure that they are secured.

Maintenance

1. Ensure the spindle is well lubricated before operating. Use the grease nipple located above the Large Nut as the grease point (Figure 11).

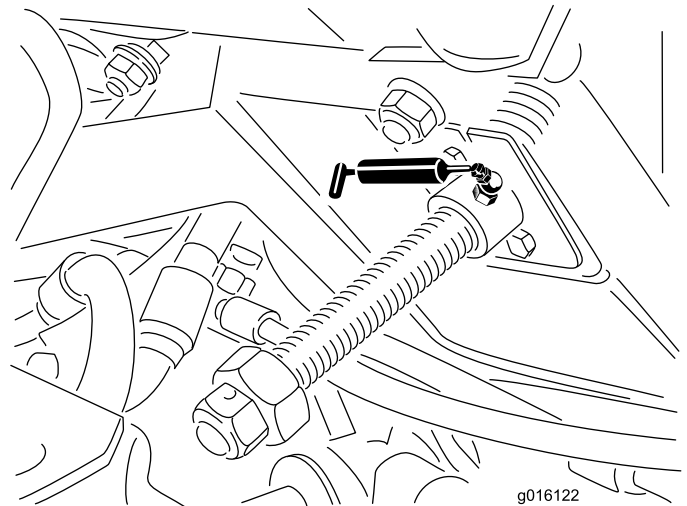


Figure 11

2. Ensure that all bolts and nuts are tight.

Notes:

Notes:



Count on it.