



**Count on it.**

Form No. 3368-724 Rev A

# Parts Catalog

## Auxiliary Valve Kit

Groundsmaster® 3320 and 3280-D

Model No. 120-6590

# Ordering Replacement Parts

To order replacement parts, please supply the part number, the quantity, and the description of each part desired.

## Understanding Reference Numbers

Each identified part in an illustration has a reference number. The reference number for a part also appears in the parts list, along with other information about the part.

This catalog uses two special reference number formats, one to indicate parts in a service assembly and another to indicate the quantity of a given part in an illustration.

## Service Assembly Reference Numbers

Parts in service assemblies have reference numbers in the form a:b. The a represents the reference number of the entire service assembly and the b represents a sequential number unique to each part within the service assembly.

For example, a wheel assembly might be identified by reference number 6, the tire by 6:1, the valve by 6:2, and the wheel by 6:3. When you order the assembly identified by reference number 6, you receive all parts identified by reference numbers 6:1, 6:2, and 6:3. However, you may also order any part individually. Reference numbers of this type appear in illustration and in parts lists.

## Reference Numbers Indicating Quantity

In an illustration, if a reference number indicates more than one part, the reference number has the form nX y. The n represents the quantity of the part, the X is the multiplication symbol, and the y represents the reference number.

For example, in an illustration, the reference number 2X 37 means that two of the parts identified by reference number 37 are indicated.

# List of Abbreviations

**AR:** as required

**ASM:** assembly

**BBC:** blade brake control

**BHTF:** button head thread forming

**CARR:** carriage

**CCW:** counter clockwise

**CW:** clockwise

**DEG:** degrees

**DPA:** Dual Point Adjustment

**ECM:** electronic control module

**EXT:** external

**FH:** flat head

**GA:** gauge

**HD:** heavy-duty

**HF:** hex flange

**HH:** hex head

**HHF:** hex head flange

**HHFTF:** hex head flange thread forming

**HJ:** hex jam

**HLH:** hex lag head

**HOC:** height-of-cut

**HSBH:** hex socket button head

**HSFH:** hex socket flat head

**HSH:** hex socket head

**HWH:** hex washer head

**HWHTF:** hex washer head thread forming

**HYD:** hydraulic

**LH:** left hand

**LP:** Liquid Propane

**NI:** nylon insert

**NPTF:** national pipe thread fine

**PFH:** phillips flat head

**PPH:** phillips pan head

**PPHTF:** phillips pan head thread forming

**PRH:** phillips round head

**PTH:** phillips truss head

**PTO:** power-take-off

**RH:** right hand

**ROPS:** roll-over protection system

**RRB:** rear roller brush

**SFH:** slotted fillister head

**SHH:** slotted hex head

**SHWH:** slotted hex washer head

**SPH:** slotted pan head

**SQH:** square head

**SRH:** slotted round head

**STD:** standard

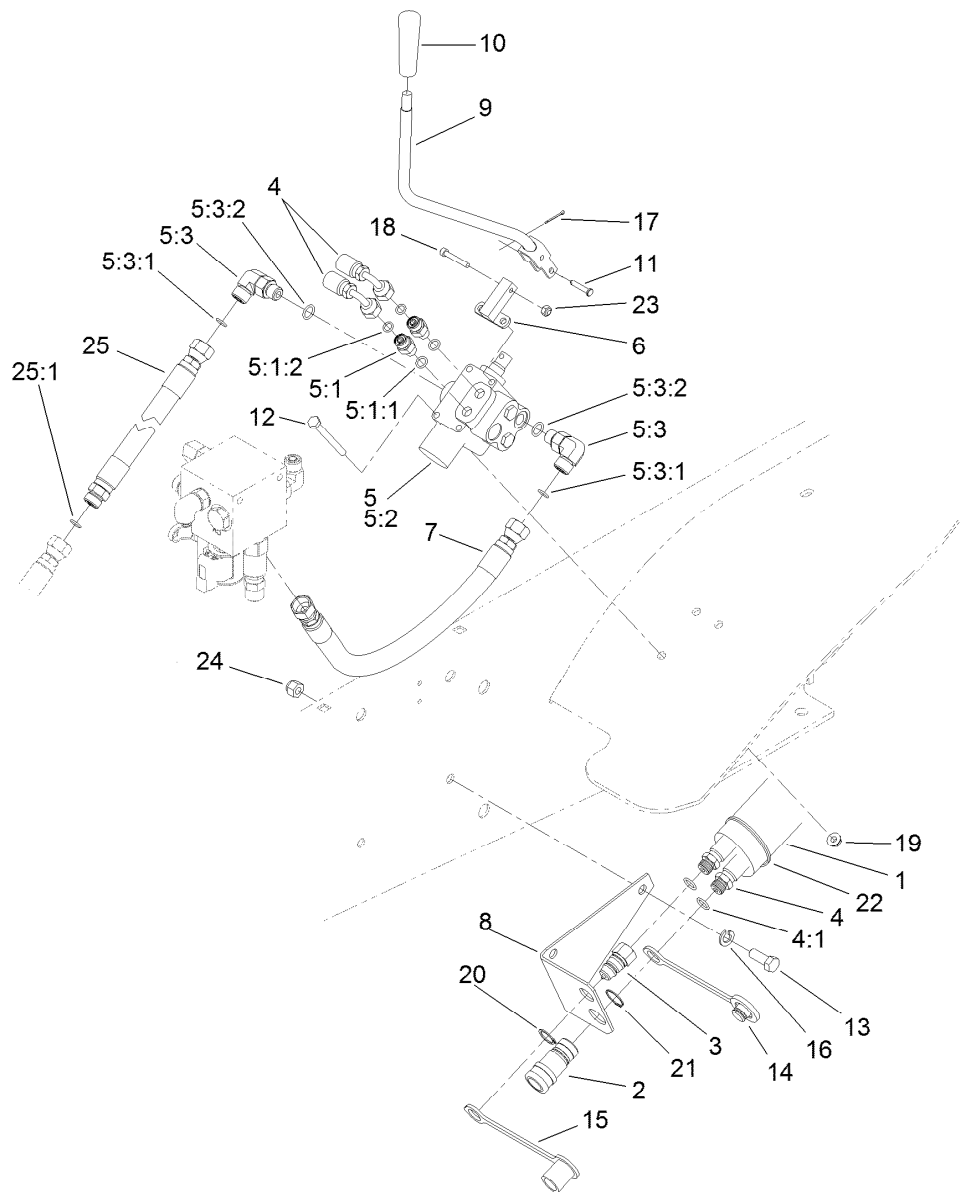
**TAP:** self tapping

**TTH:** torx truss head

# Contents

Auxiliary Valve Assembly ..... 4

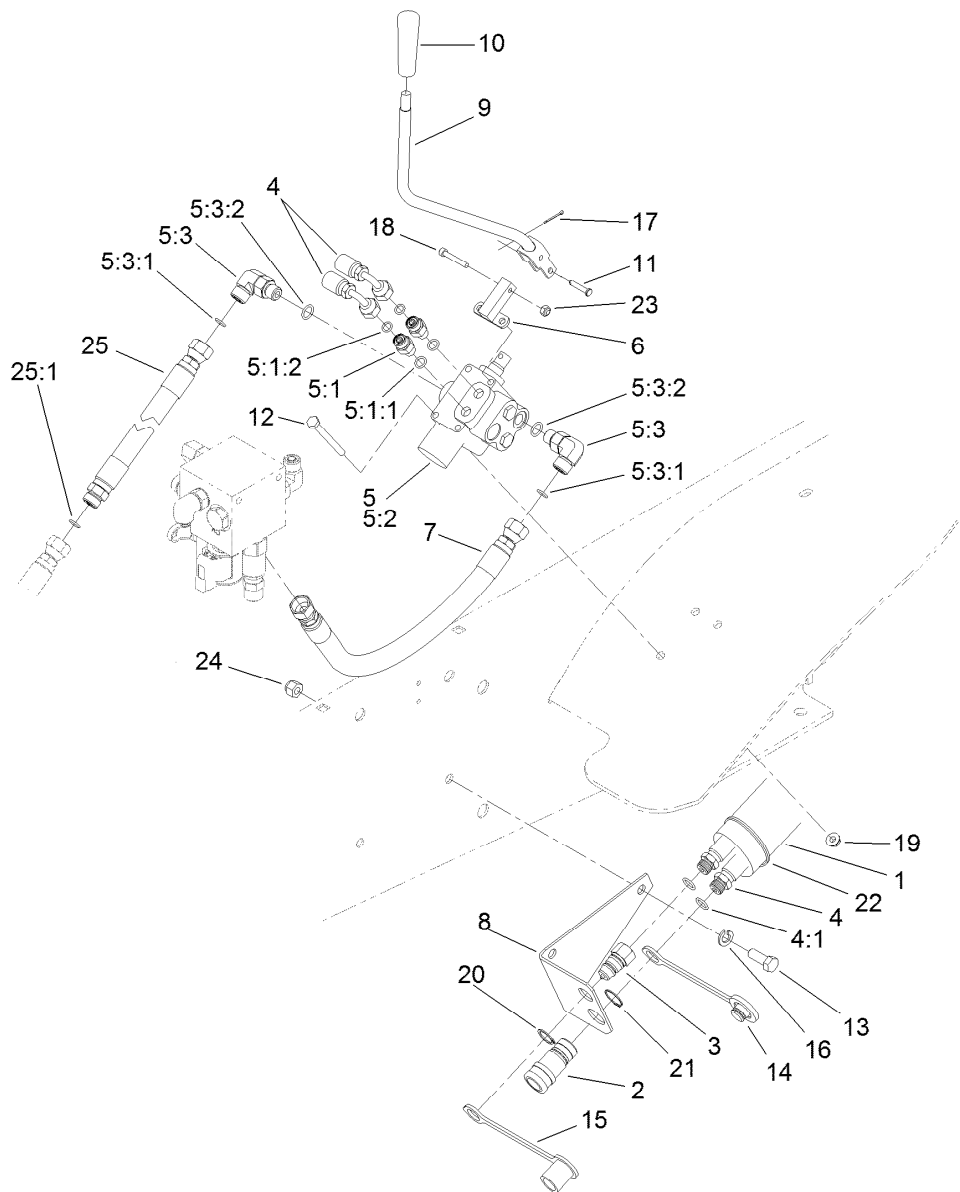
Control Valve Assembly No. 43-1950-03 ..... 6



## Auxiliary Valve Assembly

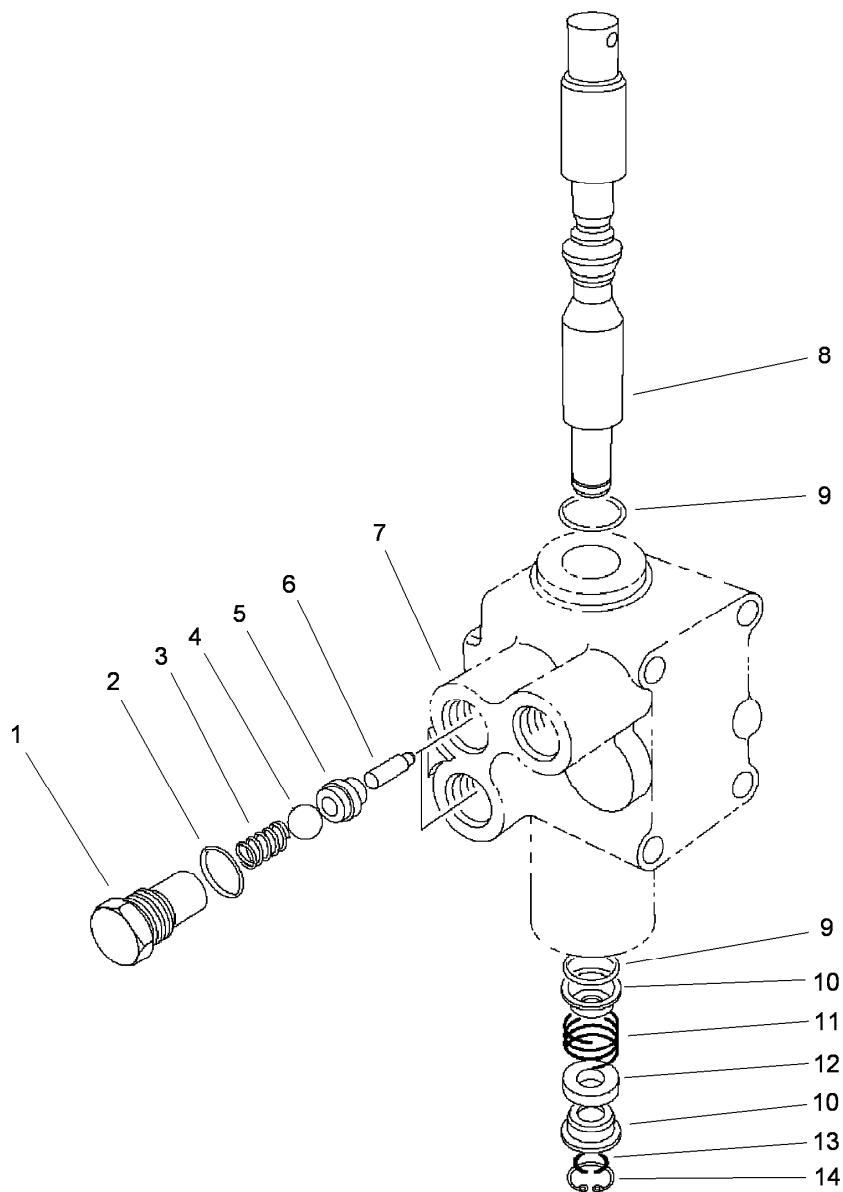
Ref.	Part Number	Qty.	Description
1	56-7982	1	Sleeve-Protective
2	63-1220	1	Coupler-Disconnect, Quick
3	63-1240	1	Nipple-Disconnect, Quick
4	63-1270	2	RH Lift Wing Hose ASM
4:1	237-42	1	O-Ring
5	77-6810	1	Valve ASM
5:1	340-92	2	Fitting-HYD, Straight
5:1:1	237-78	1	O-Ring
5:1:2	237-21	1	O-Ring
5:2	43-1950-03	1	Valve-HYD
5:3	340-77	2	Fitting-HYD, 90 DEG
5:3:1	237-22	1	O-Ring
5:3:2	237-42	1	O-Ring
6	80-3360	1	Pivot Lever ASM
7	120-6570	1	HYD Hose ASM (For Traction Unit Serial Numbers 311000001 And Up)

Ref.	Part Number	Qty.	Description
7	95-5986	1	HYD Hose ASM (For Traction Unit Serial Numbers Prior To 310999999)
8	95-6294-01	1	Bracket-Coupler, Quick
9	108-8668-03	1	Valve Lever ASM
10	233-39	1	Knob-Control
11	283-17	1	Pin-Clevis
12	321-14	3	Screw-HH
13	323-6	2	Screw-HH
14	353-984	1	Plug-Dust
15	353-985	1	Cap-Dust
16	3253-5	2	Washer-Lock
17	3272-4	1	Pin-Cotter
18	3274-13	1	Screw-HSH
19	32128-33	3	Nut-HF
20	32151-79	1	Ring-Retaining
21	32151-83	1	Ring-Snap
22	3290-378	6	Tie-Cable
23	3296-2	1	Nut-Lock, NI
24	3296-39	2	Nut-Lock, NI



# **Auxiliary Valve Assembly (continued)**

Ref.	Part Number	Qty.	Description
25	120-6569	1	HYD Hose ASM
25:1	237-22	1	O-Ring



## Control Valve Assembly No. 43-1950-03

Ref.	Part Number	Qty.	Description
1	22-8330	2	Plug
2	237-42	2	O-Ring
3	22-8340	2	Spring
4	22-8350	2	Ball
5	22-8370	2	Seat-Valve
6	22-8360	2	Pin
7		1	Body ●
8	22-8420	1	Spool
9	22-8500	2	O-Ring
10	22-8380	2	Retainer
11	22-8410	1	Spring
12	23-3030	1	Spacer
13	22-8480	1	Ring-Snap
14	22-8490	1	Ring-Snap

● Not serviced separately

**Notes:**



**Count on it.**