



Setup Instructions

Setup

Important: Refer to your Operator's Manual for safety, maintenance, and warranty information.

1. Position the upper handle over the lower handle.

Note: Do not remove the rubber band until you have installed the handle.

Important: Route the 2 cables attached to the Quick Stick inside the upper handle legs (Figure 1). Do not pinch the cables.

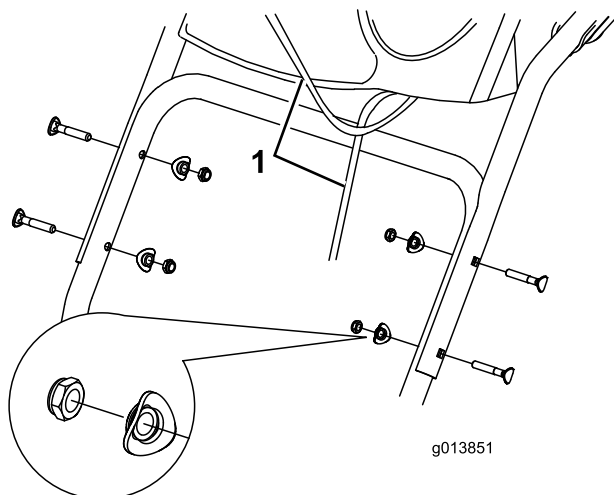


Figure 1

1. Cables

2. Secure the upper handle (Figure 1).
3. Remove the hairpin cotter and washer from the end of the speed control rod and insert the end into the lower link arm (Figure 2).

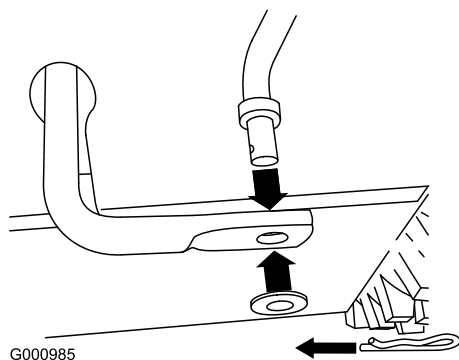


Figure 2

4. Secure the rod end with the washer and hairpin cotter.
5. Remove the hairpin cotter and the outer washer from the trunnion on the upper end of the speed control rod (Figure 3).

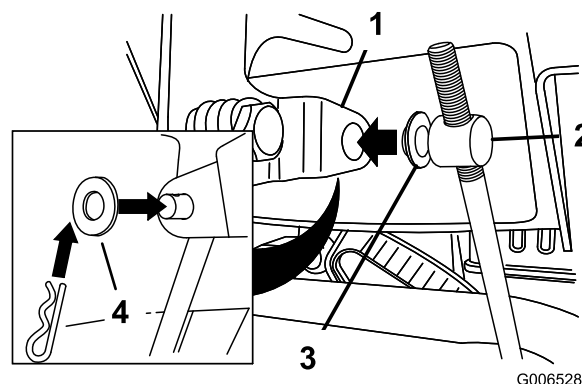


Figure 3

- | | |
|-------------------------|-----------------|
| 1. Speed selector lever | 3. Inner washer |
| 2. Trunnion | 4. Outer washer |

Note: Do not remove the inner washer (Figure 3).

6. Shift the speed selector lever into Position R2.
7. Rotate the lower link arm up (Figure 4).

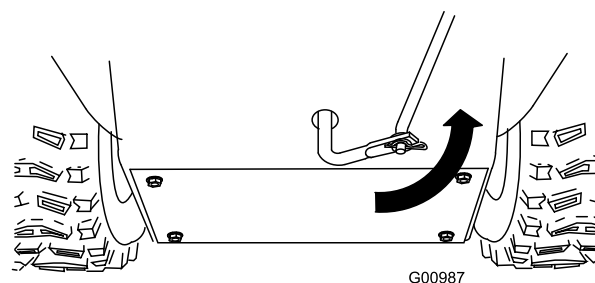


Figure 4

8. Lift up the speed control rod and insert the trunnion in the hole in the speed selector lever located under the control panel (Figure 3).

Note: If the trunnion does not fit into the hole when you lift up the speed control rod, rotate the trunnion up or down on the speed control rod until it fits.

9. Secure the trunnion and upper end of the speed control rod with the outer washer and a hairpin cotter.

Note: For easier installation, look down through the opening in the speed selector (Figure 5).

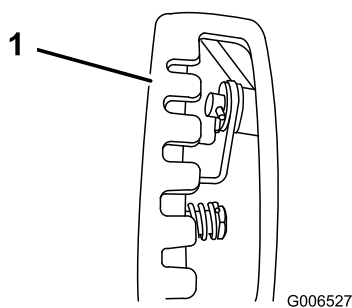


Figure 5

1. Speed selector

10. Unwrap the Quick Stick and rotate it so that it is upright and in the center.
11. Hold the blue cap down and pull the lever fully back.

Note: The discharge chute and deflector should face forward. If they do not, hold the blue cap down (but do not move the Quick Stick), and rotate the discharge chute until they do.

12. Align the flattened end of the long rod with the flattened end of the short rod that extends from the control panel so they nest together (Figure 6).

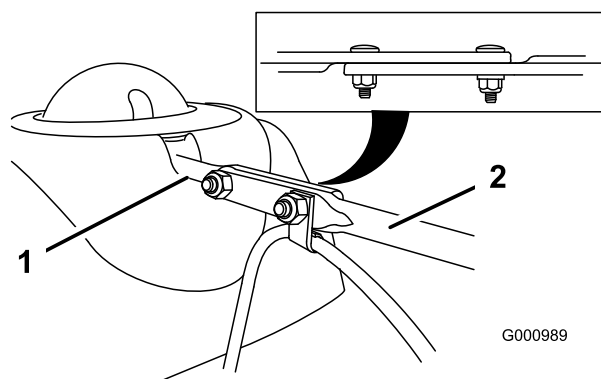


Figure 6

1. Short rod
2. Long rod

13. Insert the long rod end into the back of the chute gear cover until it slides into the gear (Figure 7).

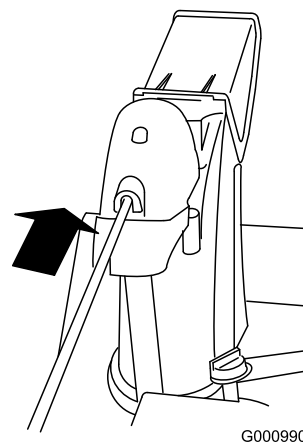


Figure 7

14. Align the holes in the nested ends of the rods and insert 2 bolts through the short rod from the left side (from the operating position).
15. Insert the cable clip that supports the deflector cable on the forward bolt, and secure the bolts with the locknuts provided (Figure 8).

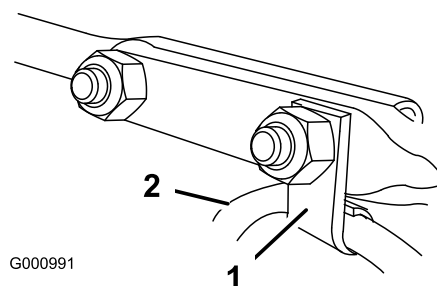


Figure 8

1. Cable clip
2. Deflector cable

16. Hold the blue cap down and rotate the Quick Stick in a circle to ensure that the chute and deflector work smoothly.
17. To operate the snowthrower using the self-propel feature, slide the wheels outward and insert the axle pins through the holes in the wheel hubs and the inner axle holes (Figure 9).

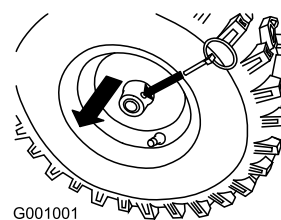


Figure 9