



Quick Attach Front Frame

Groundsmaster® 360 Multi-Purpose Machine

Model No. 30509—Serial No. 311000001 and Up

Installation Instructions

Installation

Loose Parts

Use the chart below to verify that all parts have been shipped.

Procedure	Description	Qty.	Use
1	No parts required	—	Remove the cutting deck
2	Front attachment frame Hydraulic tube, shorter Hydraulic tube, longer	1 1 1	Mount the hydraulic tubes to the front attachment frame
3	Screw, 1/2 x 1–1/4 inch Flange nut, 1/2 inch Screw, 1/2 x 4–1/2 inch Spacer Screw, 1/2 x 3–1/4 inch Support washer Spacer	4 11 6 4 1 2 1	Mount the front attachment frame
4	Tube clamp Plate Tube clamp Plate Carriage screw Flange nut	1 1 1 1 2 2	Install the hydraulic tube assemblies
5	No parts required	—	Mount the drive shaft
6	Switch Decal	2 1	Install the switches.
7	No parts required	—	Test the attachment.

Media and Additional Parts

Description	Qty.	Use
Installation instructions	1	Use to install kit
Parts catalog	1	Use to reference part numbers
Lock pin	1	Use to secure the attachment to the lift frame
Hair pin cotter	1	Use to secure the attachment to the lift frame

Note: The Groundsmaster 360 must be equipped with the Electrical Accessory Kit, Part 115-0019, to operate the Quick Attach Front Frame Kit.

1

Removing the Cutting Deck

No Parts Required

Procedure

1. Park machine on a level surface with the cutting deck in the fully raised position. Stop engine, engage parking brake and remove key from the ignition switch.

Note: When the cutting deck is in the raised position, the pull link torsion spring tension is reduced making it much easier to disconnect the pull links from the machine.

2. Disconnect the pull link from each side of the machine as follows:

⚠ CAUTION

Be careful when disconnecting the pull links. The pull link torsion springs may cause some rotation of pull links during the removal process.

- Remove the shoulder screw that secures the retainer pin to the carrier frame (Figure 1).

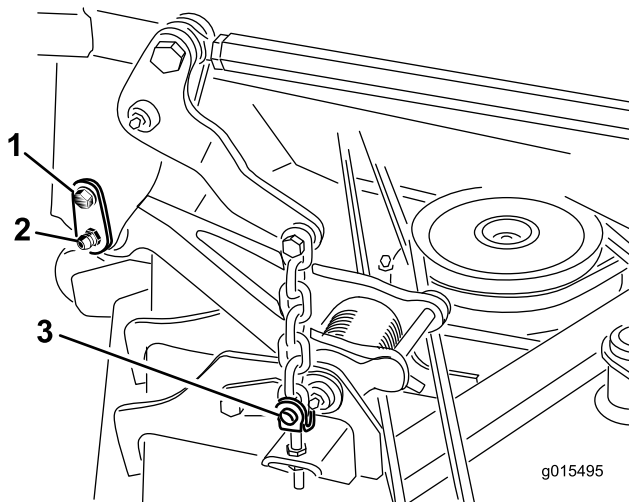


Figure 1

1. Shoulder screw
2. Retainer pin
3. Ring pins and clevis pins

(Figure 2). Remove the Height of Cut pin from the Height of Cut bracket.

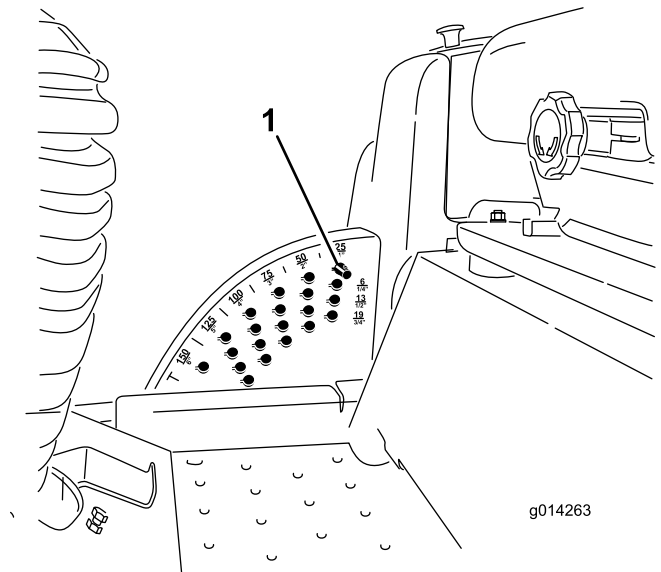


Figure 2

1. Height of Cut pin

4. Position suitable furniture dollies under the cutting deck.
5. Start the engine and fully lower the cutting deck onto the furniture dollies. Stop engine and remove key from the ignition switch.

⚠ WARNING

Do not start the engine and engage the PTO switch when the PTO drive shaft is disconnected from the cutting deck. If the engine is started and the PTO shaft is allowed to rotate, serious personal injury and machine damage could result. Remove the PTO fuse from fuse block to prevent unintentional engagement of the PTO clutch.

6. Lift the floor plate, exposing the top of the cutting deck.
7. Disconnect the end yoke of the PTO drive shaft from cutting deck gearbox shaft as follows.
 - Remove the roll pin from the end yoke and the gearbox shaft (Figure 3). Retain the roll pin for re-use.

- Carefully slide the retainer pin from carrier frame and the pull link.

3. Note the location of the Height of Cut pin in the Height of Cut bracket for re-assembly purposes

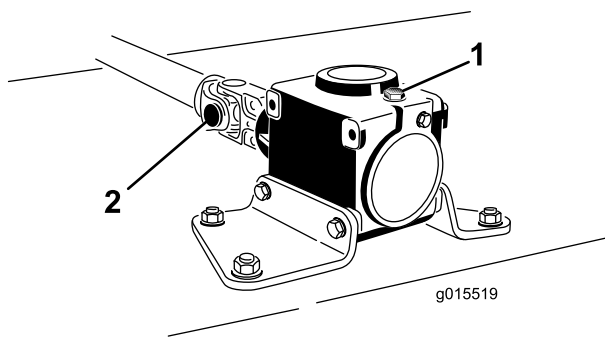


Figure 3

1. Gearbox 2. PTO drive shaft end yoke

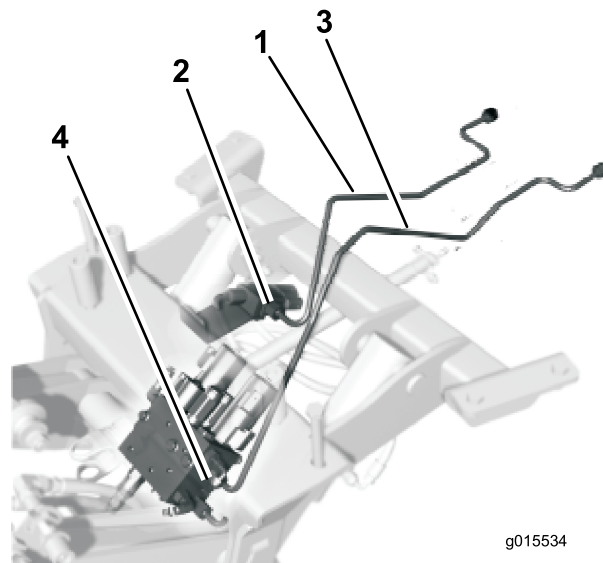


Figure 4

1. Shorter hydraulic tube 3. Longer hydraulic tube
2. Valve 4. Manifold

- Loosen the (2) capscrews and lock nuts (Figure 3).
 - Slide the drive shaft end yoke from gearbox shaft and tie them up to the frame for support.
8. Remove the (4) ring pins and clevis pins that secure the deck lift chains to the adjustment clevises on the cutting deck (Figure 1).
9. Roll the cutting deck away from the machine.

2

Mounting the Hydraulic Tubes to the Front Attachment Frame

Parts needed for this procedure:

1	Front attachment frame
1	Hydraulic tube, shorter
1	Hydraulic tube, longer

Procedure

1. Loosely install the shorter hydraulic tube to the straight fitting on the valve (Figure 4).
2. Loosely install the longer hydraulic tube to the straight fitting on the manifold (Figure 4).

3

Mounting the Front Attachment Frame

Parts needed for this procedure:

4	Screw, 1/2 x 1-1/4 inch
11	Flange nut, 1/2 inch
6	Screw, 1/2 x 4-1/2 inch
4	Spacer
1	Screw, 1/2 x 3-1/4 inch
2	Support washer
1	Spacer

Procedure

1. Figure 5 shows the top view of the location, positioning and size of the fasteners used to secure the front attachment frame to the underside of the traction unit frame.

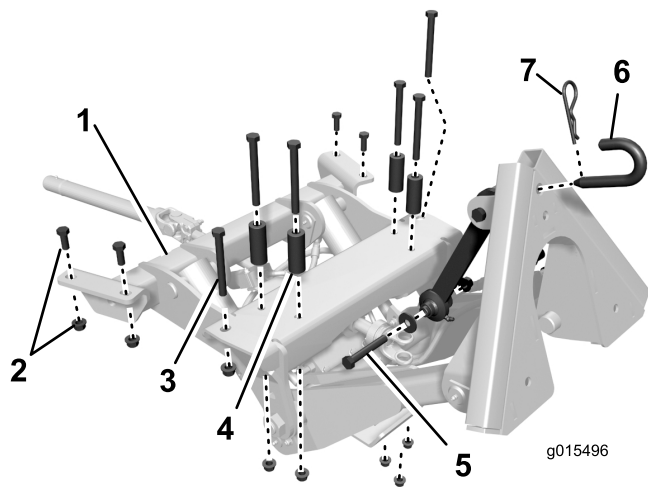


Figure 5

- | | |
|--|--|
| 1. Front attachment frame | 5. Screw, 1/2 x 3-1/4 inch, (2) support washers and lock nut, 1/2 inch |
| 2. Screw, 1/2 x 1-1/4 inch and a 1/2 inch flange nut | 6. Lock pin |
| 3. Screw, 1/2 x 4-1/2 inch | 7. Hair pin cotter |
| 4. Spacer | |

2. Guide the shorter hydraulic tube assembly (Figure 4) around and above the traction control rod.
3. Position the front attachment frame under the front of the machine (Figure 6).
4. Raise the front attachment frame while aligning the mounting holes with the mounting holes in the frame channels and the front frame cross plate (Figure 6).

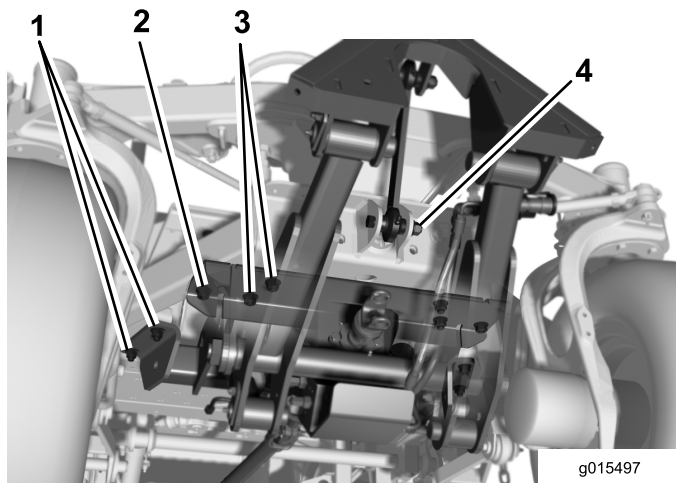


Figure 6

- | | |
|--|--|
| 1. Screw, 1/2 x 1-1/4 inch and a 1/2 inch flange nut | 3. 1/2 x 4-1/2 inch screw, spacer and a 1/2 inch flange nut |
| 2. 1/2 x 4-1/2 inch screw and a 1/2 inch flange nut | 4. Screw, 1/2 x 3-1/4 inch, (2) support washers and lock nut, 1/2 inch |

5. On the front of the attachment, secure the outer hole, on each side, to the frame channels with a 1/2 x 4-1/2 inch screw and a 1/2 inch flange nut (Figure 6).
6. On the rear of the attachment, loosely install each side to the frame channels with (2) 1/2 x 1-1/4 inch screws and 1/2 inch flange nuts (Figure 6).
7. Using the remaining (4) mounting holes, secure the attachment to the frame cross plate with 1/2 x 4-1/2 inch screws, spacers and 1/2 inch flange nuts (Figure 6). Position the spacers between the screw head and the cross plate.
8. Tighten the fasteners to 67-83 ft-lb (91-113 N-m).
9. Secure the top link assembly to the axle support with the 1/2 x 3-1/4 inch screw, (2) support washers and 1/2 inch lock nut (Figure 5 and Figure 6). The washers are to be positioned on the outside of the ears on the axle support. Install the spacer and torque to 67 to 83 ft-lb (91-113 Nm) Figure 7).

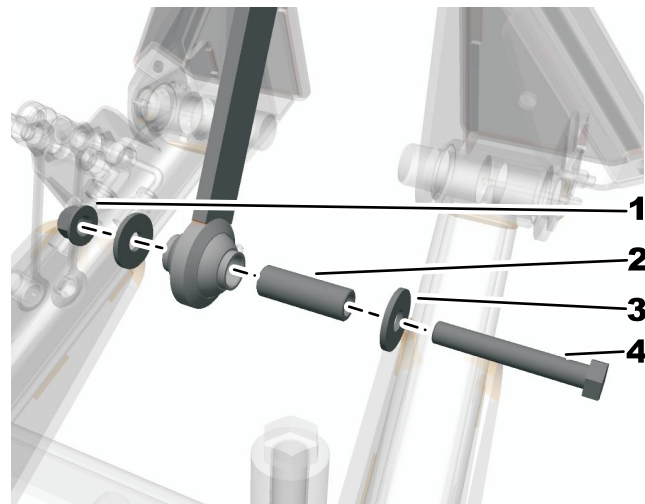


Figure 7

- | | |
|------------------------|-----------------------------|
| 1. Lock nut (1/2 inch) | 3. Support washer |
| 2. Spacer | 4. Screw (1/2 x 3-1/4 inch) |

4

Installing the Hydraulic Tube Assemblies

Parts needed for this procedure:

1	Tube clamp
1	Plate
1	Tube clamp
1	Plate
2	Carriage screw
2	Flange nut

Procedure

1. Place a drain pan under the caps on the hydraulic tubes (Figure 8).
2. Remove the caps from the hydraulic tubes on the machine (Figure 8). Remove the caps one at a time as installing the tubes to prevent excess hydraulic fluid loss.

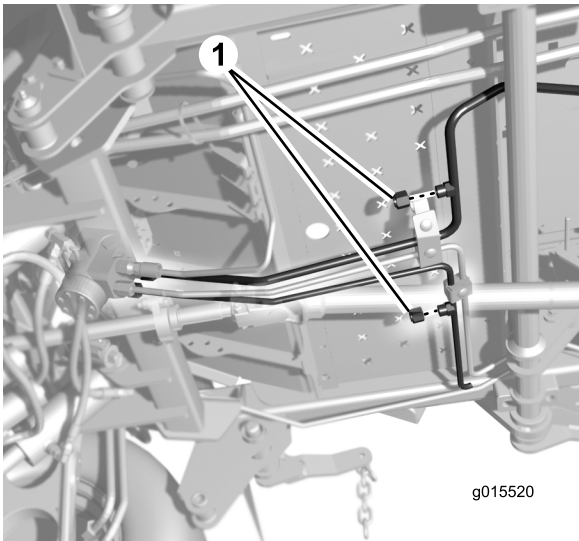


Figure 8

1. Hydraulic tube caps

3. Connect the rear end of the shorter hydraulic tube to the tube on the machine (Figure 9).

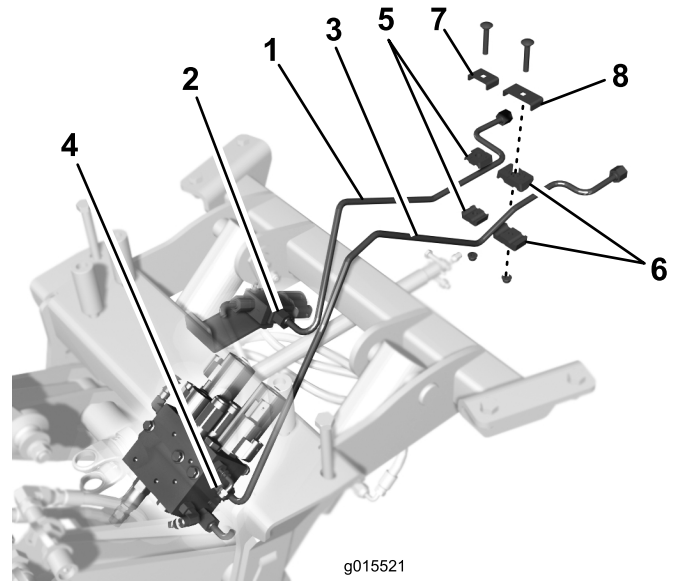


Figure 9

1. Shorter hydraulic tube
 2. Valve
 3. Longer hydraulic tube
 4. Manifold
 5. Tube clamp, small
 6. Tube clamp, large
 7. Plate, small
 8. Plate, large
4. Connect the rear end of the longer hydraulic tube to the tube on the machine (Figure 9).
 5. Tighten connections.
 6. Loosely secure the shorter hydraulic tube to the adjacent tube, on the machine, with the smaller tube clamp, plate, carriage screw and flange nut, as shown in Figure 9.
 7. Loosely secure the longer hydraulic tube to the adjacent tube, on the machine, with the larger tube clamp, plate, carriage screw and flange nut, as shown in Figure 9.
 8. Tighten the carriage screws and nuts.

5

Mounting the Drive Shaft

No Parts Required

Procedure

1. While aligning the drive shaft mounting holes with the jack shaft hole, slide the drive shaft onto the attachment jack shaft (Figure 10).

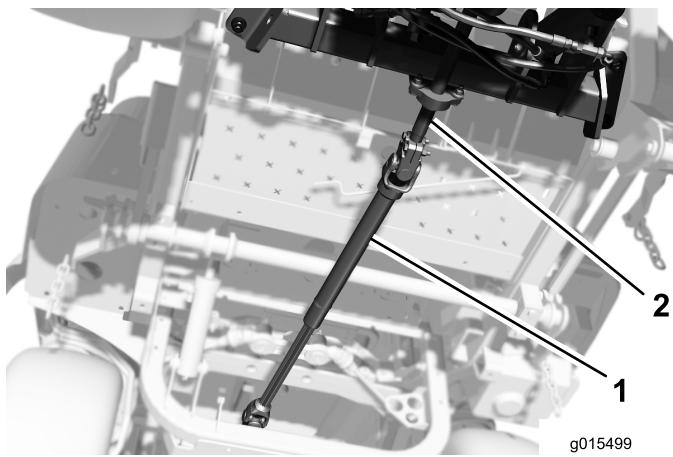


Figure 10

1. Drive shaft
2. Jack shaft

2. Secure the drive shaft to the jack shaft with the roll pin previously removed.
3. Tighten the (2) drive shaft cap screws and lock nuts.

6

Installing the Switches

Parts needed for this procedure:

2	Switch
1	Decal

Procedure

1. Use a knife to cut out the provided decal.
2. Remove the knock-out by pressing on it from inside the console.
3. Install the decal between the switch holes.

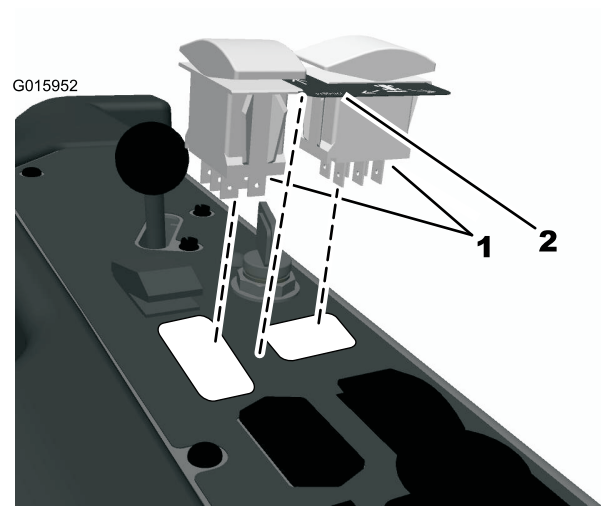


Figure 11

1. Switches.
2. Decal

4. Install the switches by pressing them into the hole.
5. Connect the wire harness to the switches.

7

Testing the Quick Attach Front Frame

No Parts Required

Procedure

Test the machine to ensure that all controls and parts are working as expected.

1. Start the engine.
2. Raise and lower the quick attach front frame to ensure that all functions are working as expected.
3. Stop the engine, engage the parking brake and remove the key from the ignition switch.
4. Check for any leaks.

Note: If there are any leaks or if the machine is not performing properly, please review and repeat the steps in this manual to ensure that everything is connected properly.

Operation

Note: Determine the left and right sides of the machine from the normal operating position.

Think Safety First

Please read all safety instructions and symbols in the safety section. Knowing this information could help you or bystanders avoid injury.

⚠ DANGER

Operating on wet grass, ice or slippery steep slopes can cause sliding and loss of control.

Wheels dropping over edges can cause roll overs, which may result in serious injury, death or drowning.

Read and follow the rollover protection instructions and warnings.

To avoid loss of control and possibility of rollover:

- Do not operate near drop-offs or near water.
- Reduce speed and use extreme caution on slopes.
- Avoid sudden turns or rapid speed changes. Always use seat belts

⚠ CAUTION

This machine produces sound levels in excess of 85 dBA at the operators ear and can cause hearing loss through extended periods of exposure.

Wear hearing protection when operating this machine.

The use of protective equipment for eyes, ears, feet and head is recommended.

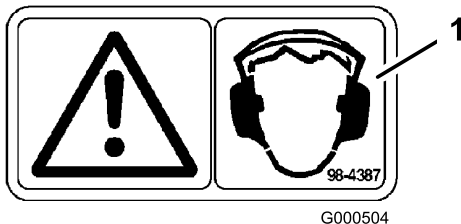


Figure 12

1. Warning— wear hearing protection

Operating Front Attachment

To operate the front attachment, use the rocker switches as indicated in

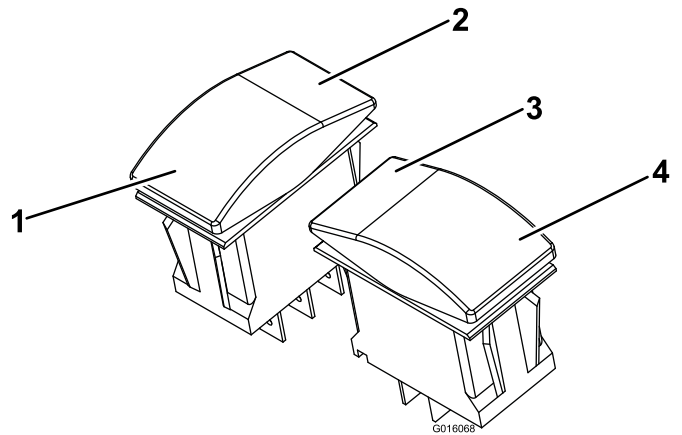


Figure 13

1. Tap to float front attach down. Hold to power down.
2. Front attach raise and hold
3. Swing front attachment right
4. Swing front attachment left

⚠ WARNING

Holding down the power down or front attachment lower switch can cause significant hydraulic system damage and result in front attachment damage.

To use front attachments:

Remove the mower deck as shown in 1 Removing the Cutting Deck (page 1), then mount the drive shaft as shown in 5 Mounting the Drive Shaft (page 5).

⚠ WARNING

The drive shaft cannot be mounted to the front attachment with the deck installed, or else the machine will be damaged.

⚠ WARNING

It is not recommended to utilize non-powered front attachments with the deck installed. Doing this could result in damage to the machine, the operator, or onlookers.

To use the mower:

1. Clean and grease all front attachments.
2. Remove the drive shaft.
3. Install the front deck.

Attachments

Read the *Operator's Manual* supplied with the attachment before operating.

Make sure hydraulic quick couplers are free of any contaminants before connecting.

Keep output shaft oiled to prevent rust.

Never operate the PTO with attachment in the raised position. Noise from the PTO drive line will be evident.

Install the attachment as follows:

- Remove any attachment from the machine. Follow attachment supplier's recommendation for safe blocking and storage.
- Drive the machine into position behind the attachment adapter. Raise the machine adapter into the attachment adapter.
- Secure the adapters together with the attachment pin and hairpin cotter as shown in Figure 14. For more abusive loading a nut and bolt may be substituted.

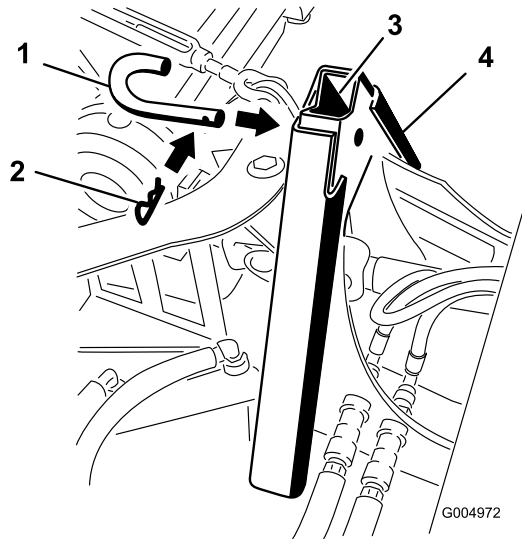


Figure 14

1. Attachment pin 2. Cotter pin

6. Slide the drive shaft off of the deck gearbox and secure it to the frame of the machine with a bungee cord or strap.
7. The deck can now be rolled out from under the machine.
8. If preparing the machine for winter work, it would be advisable to remove the deck hanging chains.

Attaching the deck

1. If the deck chains were removed from the lift arms, reinstall them.
2. Raise the drag-links on the deck with a pry bar and place a block (6 x 2 x 4 inch) under each one to lift the arm up. **Use caution, as there will be energy stored in the torsion spring.**
3. Raise the front of the machine so there is enough clearance to slide the deck underneath, and line up slots with the drag-link.
4. Slowly lower the machine over the drag links until the holes line up in the frame. Insert the pins and secure it with bolts (5/16 inch).
5. Raise the machine slightly until the block can be easily removed from underneath the drag-links.
6. Lower the machine until the chains can be attached with clevis pins and retainer clips. The machine may need to be started and the lift arms lowered to the lowest position so the chains will reach the deck.
7. After the deck is attached, slide the drive shaft over the gear box spline until the holes are aligned. Insert the roll-pins and tighten the two bolts on the drive shaft.
8. Start the machine and raise the deck high enough to remove the furniture dollies.
9. To adjust and verify the height of cut, consult the *Owner's Manual*.

Front Attach to Mower Deck Conversion

Removing the deck

1. On a flat level surface raise deck to highest position.
2. Place 2 furniture dollies under each end of the deck and lower it so it rests on the dollies.
3. Remove the bolts (5/16 inch) and remove the pins from the drag-links on each side of the deck.
4. Remove the four retainer clips and clevis pins from the chains suspending the deck.
5. Remove the roll pin and loosen the bolts securing the drive shaft to the deck.

Maintenance

Recommended Maintenance Schedule(s)

Maintenance Service Interval	Maintenance Procedure
After the first 10 hours	<ul style="list-style-type: none">• Torque the frame mounting bolts.• Torque wheel lug nuts.
Every 50 hours	<ul style="list-style-type: none">• Lubricate grease fittings
Every 200 hours	<ul style="list-style-type: none">• Torque wheel lug nuts.

⚠ CAUTION

If you leave the key in the ignition switch, someone could accidentally start the engine and seriously injure you or other bystanders.

Remove the key from the ignition before you do any maintenance.

Greasing and Lubrication

Lubricate the machine every 50 hours. Grease more frequently when operating conditions are extremely dusty or sandy.

Grease Type: General-purpose grease.

How to Grease

Service Interval: Every 50 hours

1. Disengage the PTO and set the parking brake.
2. Stop the engine, remove the key, and wait for all moving parts to stop before leaving the operating position.
3. Clean the grease fittings with a rag. Make sure to scrape any paint off the front of the fitting(s).
4. Connect a grease gun to the fitting. Pump grease into the fittings until grease begins to ooze out of the bearings.
5. Wipe up any excess grease.

Where to Add Grease

Grease the locations indicated in Figure 15.

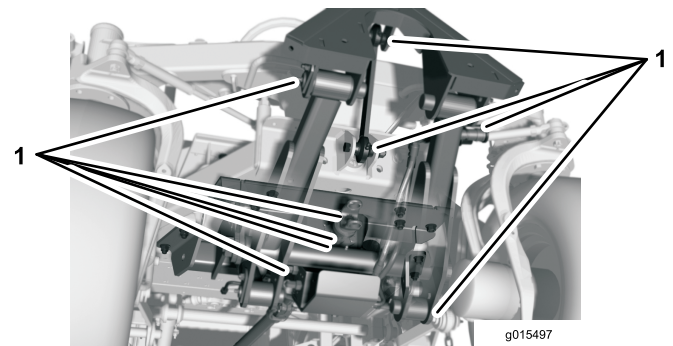


Figure 15

1. Grease locations

Electrical System Maintenance

Important: Whenever working with the electrical system, always disconnect the battery cables, negative (-) cable first, to prevent possible wiring damage from short-outs.

Checking the Fuses

Refer to the *Operator's Manual* supplied with the cab for instructions on fuses.

If the machine has any electrical system issues, check the fuses. Grasp each fuse and remove them one at a time, checking to see if any are blown. If you need to replace a fuse, always use the **same type and amperage rated fuse** as the one you are replacing, **otherwise you could damage the electrical system**

Note: If a fuse blows frequently, you probably have a short in the electrical system and should have it serviced by a qualified service technician.

Storage

Machine

1. Thoroughly clean the machine and cab, paying special attention to these areas:
 - PTO shaft assembly
 - All grease fittings and pivot points
 - Oil the spline on the PTO output shaft to prevent rusting
2. Check all fasteners for looseness and tighten them as necessary. Especially torque the 5 bolts securing the winter frame to the traction unit to 265 ft-lb (359 N•m).
3. Grease or oil all grease fittings and pivot points. Wipe off any excess lubricant.
4. Lightly sand and use touch up paint on painted areas that are scratched, chipped or rusted. Repair any dents in the metal body.

Notes:



The Toro Total Coverage Guarantee

A Limited Warranty

Conditions and Products Covered

The Toro® Company and its affiliate, Toro Warranty Company, pursuant to an agreement between them, jointly warrant your Toro Commercial product ("Product") to be free from defects in materials or workmanship for two years or 1500 operational hours*, whichever occurs first. This warranty is applicable to all products with the exception of Aerators (refer to separate warranty statements for these products). Where a warrantable condition exists, we will repair the Product at no cost to you including diagnostics, labor, parts, and transportation. This warranty begins on the date the Product is delivered to the original retail purchaser.

* Product equipped with an hour meter.

Instructions for Obtaining Warranty Service

You are responsible for notifying the Commercial Products Distributor or Authorized Commercial Products Dealer from whom you purchased the Product as soon as you believe a warrantable condition exists. If you need help locating a Commercial Products Distributor or Authorized Dealer, or if you have questions regarding your warranty rights or responsibilities, you may contact us at:

Commercial Products Service Department
Toro Warranty Company
8111 Lyndale Avenue South
Bloomington, MN 55420-1196
E-mail: commercial.warranty@toro.com

Owner Responsibilities

As the Product owner, you are responsible for required maintenance and adjustments stated in your Operator's Manual. Failure to perform required maintenance and adjustments can be grounds for disallowing a warranty claim.

Items and Conditions Not Covered

Not all product failures or malfunctions that occur during the warranty period are defects in materials or workmanship. This warranty does not cover the following:

- Product failures which result from the use of non-Toro replacement parts, or from installation and use of add-on, or modified non-Toro branded accessories and products. A separate warranty may be provided by the manufacturer of these items.
- Product failures which result from failure to perform recommended maintenance and/or adjustments. Failure to properly maintain your Toro product per the Recommended Maintenance listed in the *Operator's Manual* can result in claims for warranty being denied.
- Product failures which result from operating the Product in an abusive, negligent or reckless manner.
- Parts subject to consumption through use unless found to be defective. Examples of parts which are consumed, or used up, during normal Product operation include, but are not limited to, brakes pads and linings, clutch linings, blades, reels, bed knives, tines, spark plugs, castor wheels, tires, filters, belts, and certain sprayer components such as diaphragms, nozzles, and check valves, etc.
- Failures caused by outside influence. Items considered to be outside influence include, but are not limited to, weather, storage practices, contamination, use of unapproved coolants, lubricants, additives, fertilizers, water, or chemicals, etc.

- Normal noise, vibration, wear and tear, and deterioration.
- Normal "wear and tear" includes, but is not limited to, damage to seats due to wear or abrasion, worn painted surfaces, scratched decals or windows, etc.

Parts

Parts scheduled for replacement as required maintenance are warranted for the period of time up to the scheduled replacement time for that part. Parts replaced under this warranty are covered for the duration of the original product warranty and become the property of Toro. Toro will make the final decision whether to repair any existing part or assembly or replace it. Toro may use remanufactured parts for warranty repairs.

Note Regarding Deep Cycle Battery Warranty:

Deep cycle batteries have a specified total number of kilowatt-hours they can deliver during their lifetime. Operating, recharging, and maintenance techniques can extend or reduce total battery life. As the batteries in this product are consumed, the amount of useful work between charging intervals will slowly decrease until the battery is completely worn out. Replacement of worn out batteries, due to normal consumption, is the responsibility of the product owner. Battery replacement may be required during the normal product warranty period at owner's expense.

Maintenance is at Owner's Expense

Engine tune-up, lubrication cleaning and polishing, replacement of Items and Conditions Not Covered filters, coolant, and completing Recommended Maintenance are some of the normal services Toro products require that are at the owner's expense.

General Conditions

Repair by an Authorized Toro Distributor or Dealer is your sole remedy under this warranty.

Neither The Toro Company nor Toro Warranty Company is liable for indirect, incidental or consequential damages in connection with the use of the Toro Products covered by this warranty, including any cost or expense of providing substitute equipment or service during reasonable periods of malfunction or non-use pending completion of repairs under this warranty. Except for the Emissions warranty referenced below, if applicable, there is no other express warranty.

All implied warranties of merchantability and fitness for use are limited to the duration of this express warranty. Some states do not allow exclusions of incidental or consequential damages, or limitations on how long an implied warranty lasts, so the above exclusions and limitations may not apply to you.

This warranty gives you specific legal rights, and you may also have other rights which vary from state to state.

Note regarding engine warranty:

The Emissions Control System on your Product may be covered by a separate warranty meeting requirements established by the U.S. Environmental Protection Agency (EPA) and/or the California Air Resources Board (CARB). The hour limitations set forth above do not apply to the Emissions Control System Warranty. Refer to the Engine Emission Control Warranty Statement printed in your *Operator's Manual* or contained in the engine manufacturer's documentation for details.

Countries Other than the United States or Canada

Customers who have purchased Toro products exported from the United States or Canada should contact their Toro Distributor (Dealer) to obtain guarantee policies for your country, province, or state. If for any reason you are dissatisfied with your Distributor's service or have difficulty obtaining guarantee information, contact the Toro importer. If all other remedies fail, you may contact us at Toro Warranty Company.