



Registration Plate Kit

Groundsmaster® 4000 Series Rotary Mower

Model No. 120-7571

Installation Instructions

Note: The Groundsmaster 4000 Series Rotary Mower must be equipped with the CE Light Kit, Model 30454 to operate the Registration Plate Kit Light.

1. Position the machine on a level surface, stop the engine, remove the ignition key and engage parking brake.

⚠ CAUTION

If you leave the key in the ignition switch, someone could accidentally start the engine and seriously injure you or other bystanders.

Remove the key from the ignition switch before you do any maintenance.

2. Disconnect the negative battery cable. Refer to your *Operator's Manual* information about accessing the battery.
3. Release the hood latches and pivot open the hood.
4. Remove the (2) cotter pins securing the rear hood pivot mounts to the frame pivots and lift off the hood.
5. Remove the **rear** screws that secure the hood pivot mounts to the hood (Figure 1). Only remove the rear screw from each hood pivot mount.

6. Mount the light to the plate mount with (2) #10 x 5/8 inch screws and #10 lock nuts (Figure 1). Do not over tighten. Make sure the lens points downward and the wires are inserted through the hole in the plate mount.
7. Using the (2) screws previously removed, install the plate mount to the hood pivot mounts and the hood (Figure 1).
8. Install the hood and secure it with the cotter pins. Make sure the light wires are routed between the hood and the frame.
9. Using the wires included with the CE Light Kit, connect the registration plate light wires to the CE light kit harness.

Important: Make sure the wires are clear of all hot, sharp or moving components.

10. Secure the wires to frame pivot with the harness clip and cable tie. Also, secure the remaining wires with cable ties.
11. Connect the negative battery cable to the battery.
12. Close and latch the hood.
13. Check the operation of the registration plate light.

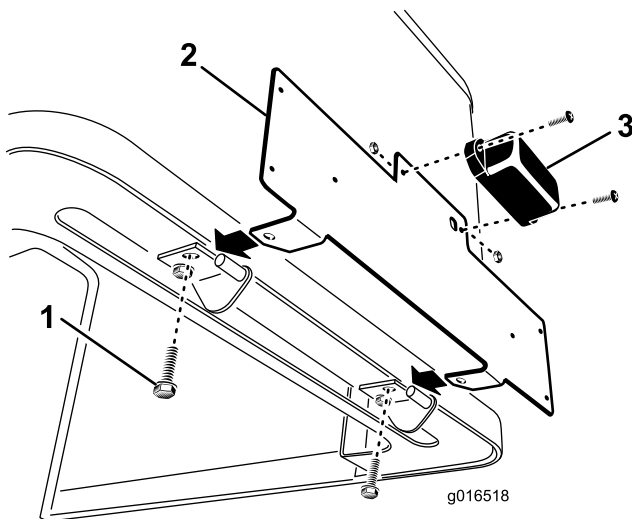


Figure 1

- | | |
|-------------------------------------|----------|
| 1. Hood pivot mount rear screws (2) | 3. Light |
| 2. Plate mount | |