



Count on it.

Parts Catalog

Workman® MDE Utility Vehicle

Model No. 07299—Serial No. 311000501 and Up

Ordering Replacement Parts

To order replacement parts, please supply the part number, the quantity, and the description of each part desired.

Understanding Reference Numbers

Each identified part in an illustration has a reference number. The reference number for a part also appears in the parts list, along with other information about the part.

This catalog uses two special reference number formats, one to indicate parts in a service assembly and another to indicate the quantity of a given part in an illustration.

Service Assembly Reference Numbers

Parts in service assemblies have reference numbers in the form a:b. The a represents the reference number of the entire service assembly and the b represents a sequential number unique to each part within the service assembly.

For example, a wheel assembly might be identified by reference number 6, the tire by 6:1, the valve by 6:2, and the wheel by 6:3. When you order the assembly identified by reference number 6, you receive all parts identified by reference numbers 6:1, 6:2, and 6:3. However, you may also order any part individually. Reference numbers of this type appear in illustration and in parts lists.

Reference Numbers Indicating Quantity

In an illustration, if a reference number indicates more than one part, the reference number has the form nX y. The n represents the quantity of the part, the X is the multiplication symbol, and the y represents the reference number.

For example, in an illustration, the reference number 2X 37 means that two of the parts identified by reference number 37 are indicated.

List of Abbreviations

AR: as required

ASM: assembly

BBC: blade brake control

BHTF: button head thread forming

CARR: carriage

CCW: counter clockwise

CW: clockwise

DEG: degrees

DPA: Dual Point Adjustment

ECM: electronic control module

EXT: external

FH: flat head

GA: gauge

HD: heavy-duty

HF: hex flange

HH: hex head

HHF: hex head flange

HHFTF: hex head flange thread forming

HJ: hex jam

HLH: hex lag head

HOC: height-of-cut

HSBH: hex socket button head

HSFH: hex socket flat head

HSH: hex socket head

HWH: hex washer head

HWTF: hex washer head thread forming

HYD: hydraulic

LH: left hand

LP: Liquid Propane

NI: nylon insert

NPTF: national pipe thread fine

PFH: phillips flat head

PPH: phillips pan head

PPHTF: phillips pan head thread forming

PRH: phillips round head

PTH: phillips truss head

PTO: power-take-off

RH: right hand

ROPS: roll-over protection system

RRB: rear roller brush

SFH: slotted fillister head

SHH: slotted hex head

SHWH: slotted hex washer head

SPH: slotted pan head

SQH: square head

SRH: slotted round head

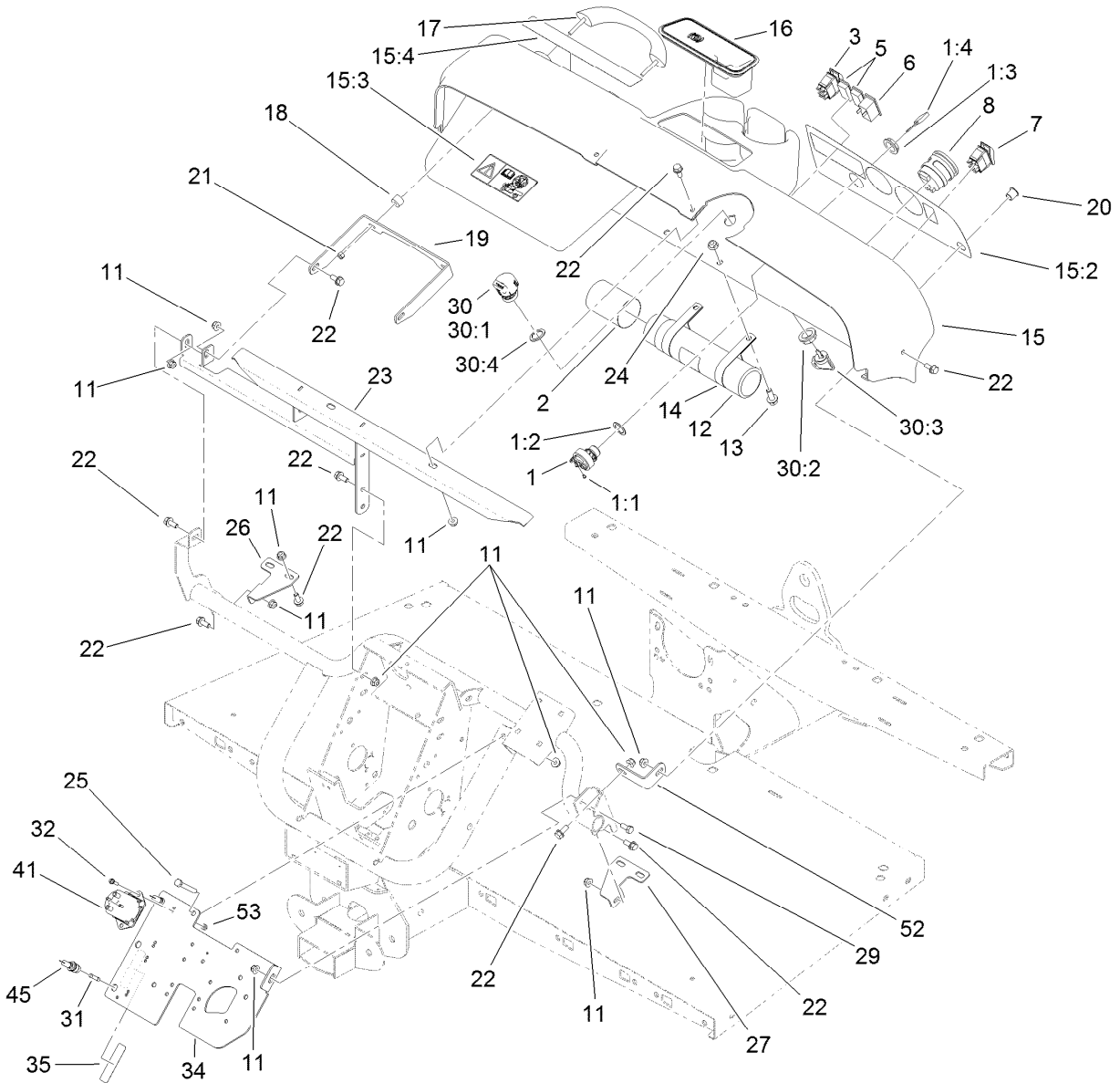
STD: standard

TAP: self tapping

TTH: torx truss head

Contents

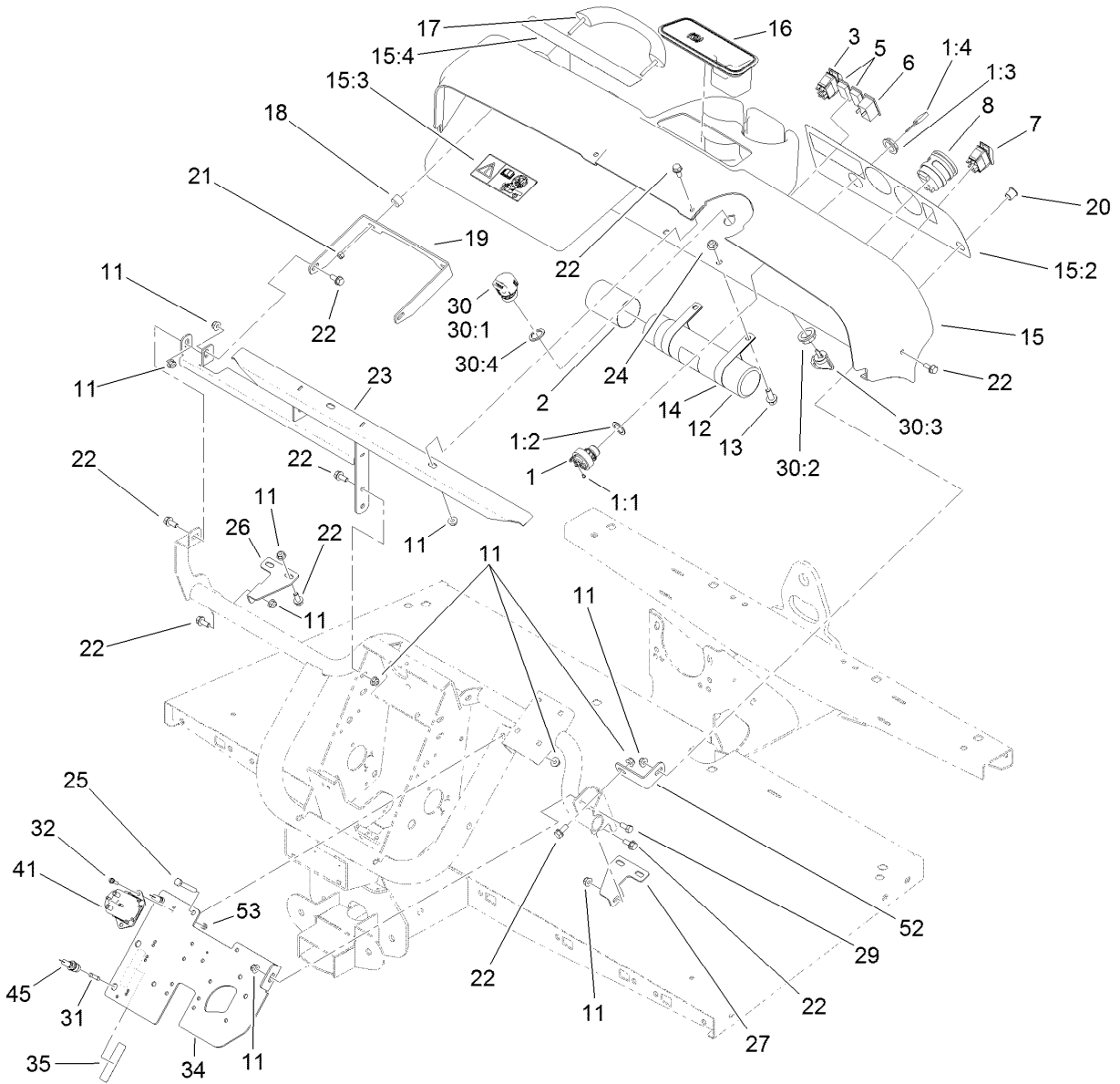
| | |
|--|----|
| Dash Assembly | 4 |
| Solenoid Assembly No. 104-7135 | 6 |
| Pedal Box Assembly | 7 |
| Master Cylinder and Brake Line Assembly | 8 |
| Master Cylinder Assembly No. 104-6782 | 9 |
| Frame Assembly | 10 |
| Seat Base Assembly | 11 |
| Offboard 48 Volt Charger Assembly No. 112-3072 | 12 |
| Front Tire, Spindle and Tie Rod Assembly | 13 |
| Brake Caliper Assembly No. 119-9535 | 15 |
| Controller Assembly | 16 |
| Battery and Transaxle Assembly | 17 |
| Electric Motor Assembly No. 104-7335 | 18 |
| Electric Transaxle Assembly No. 114-8330 | 19 |
| LH Rear Brake Assembly No. 114-8332 | 21 |
| RH Rear Brake Assembly No. 114-8331 | 22 |
| Upper Steering Assembly | 23 |
| Steering Box Assembly No. 112-3130 | 24 |
| Cargo Bed and Tailgate Installation Assembly | 25 |
| Cargo Bed Service Assembly No. 119-9710 | 26 |
| Cargo Bed and Tailgate Assembly | 27 |
| Hood and Fender Assembly | 28 |
| Attachments and Accessories | 29 |



Dash Assembly

| Ref. | Part Number | Qty. | Description | Ref. | Part Number | Qty. | Description |
|------|-------------|------|-----------------------------------|------|-------------|------|------------------------|
| 1 | 107-0348 | 1 | Switch-Key, 48V | 15:4 | 115-2412 | 1 | Decal-No Storage |
| 1:1 | 3250-28 | 3 | Screw | 16 | 104-6930 | 1 | Plug-Rubber |
| 1:2 | 108-8659 | 1 | Washer-Backup | 17 | 112-3320 | 1 | Handle-Grip |
| 1:3 | 108-8660 | 1 | Nut-Mounting | 18 | 114-8301 | 2 | Spacer |
| 1:4 | 108-6994 | 1 | Key-Ignition | 19 | 112-3391-03 | 1 | Bracket-Grip, Handle |
| 2 | 104-7048 | 1 | Cap-Housing | 20 | 94-5627 | 1 | Plug |
| 3 | 107-0255 | 1 | Switch | 21 | 104-7201 | 2 | Nut-HF |
| 5 | 99-7420 | 2 | Plug-Hole | 22 | 110-5053 | 15 | Screw-Flange |
| 6 | 104-7129 | 1 | Light-Indicator | 23 | 115-7651-03 | 1 | Dash Support ASM |
| 7 | 107-0747 | 1 | Switch-Rocker | 24 | 104-8301 | 2 | Nut-Flange, NI |
| 8 | 107-0260 | 1 | Guage-Hour/Battery Level, 48 Volt | 25 | 322-11 | 2 | Screw-HH |
| 11 | 104-8300 | 18 | Nut-Flange, NI | 26 | 114-8304 | 1 | Bracket-Dash Mount, RH |
| 12 | 104-7050 | 1 | Tube-Manual | 27 | 114-8312 | 1 | Bracket-Dash Mount, LH |
| 13 | 3234-11 | 2 | Screw-HHF | 29 | 322-3 | 1 | Screw-HH |
| 14 | 2412-133 | 2 | R-Clamp | 30 | 110-2580 | 1 | Switch-Key, Supervisor |
| 15 | 114-8311 | 1 | Dash ASM | 30:1 | | 1 | Switch-Key ● |
| 15:2 | 112-3310 | 1 | Decal-Dash, Ce | 30:2 | 108-8660 | 1 | Nut-Mounting |
| 15:3 | 104-7215 | 1 | Decal-Danger | 30:3 | 110-5221 | 1 | Set-Key, Supervisor |
| | | | | 30:4 | 108-8659 | 1 | Washer-Backup |

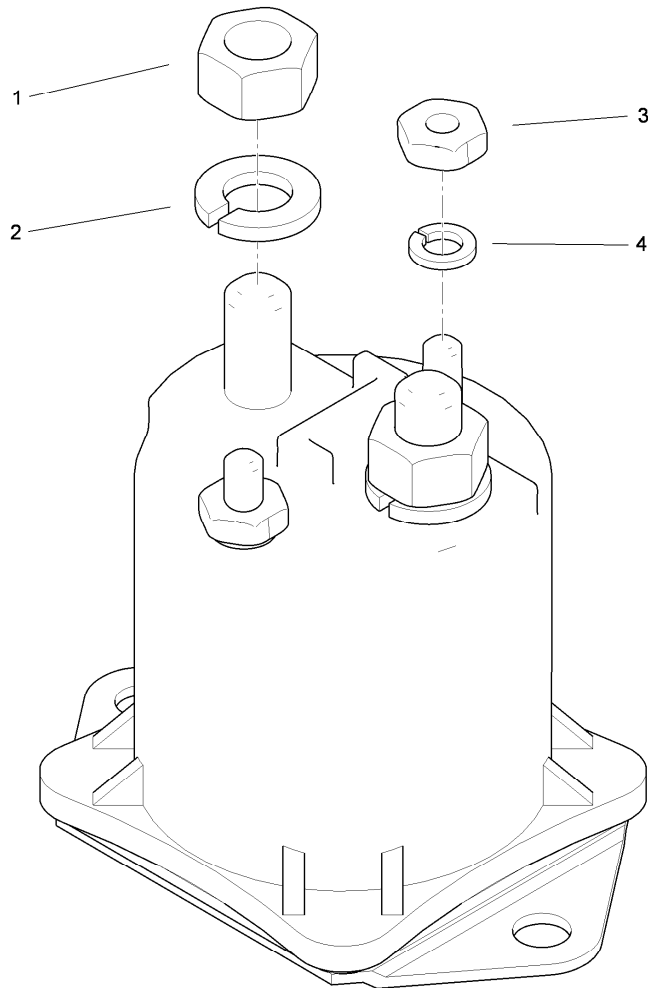
● Not serviced separately



Dash Assembly (continued)

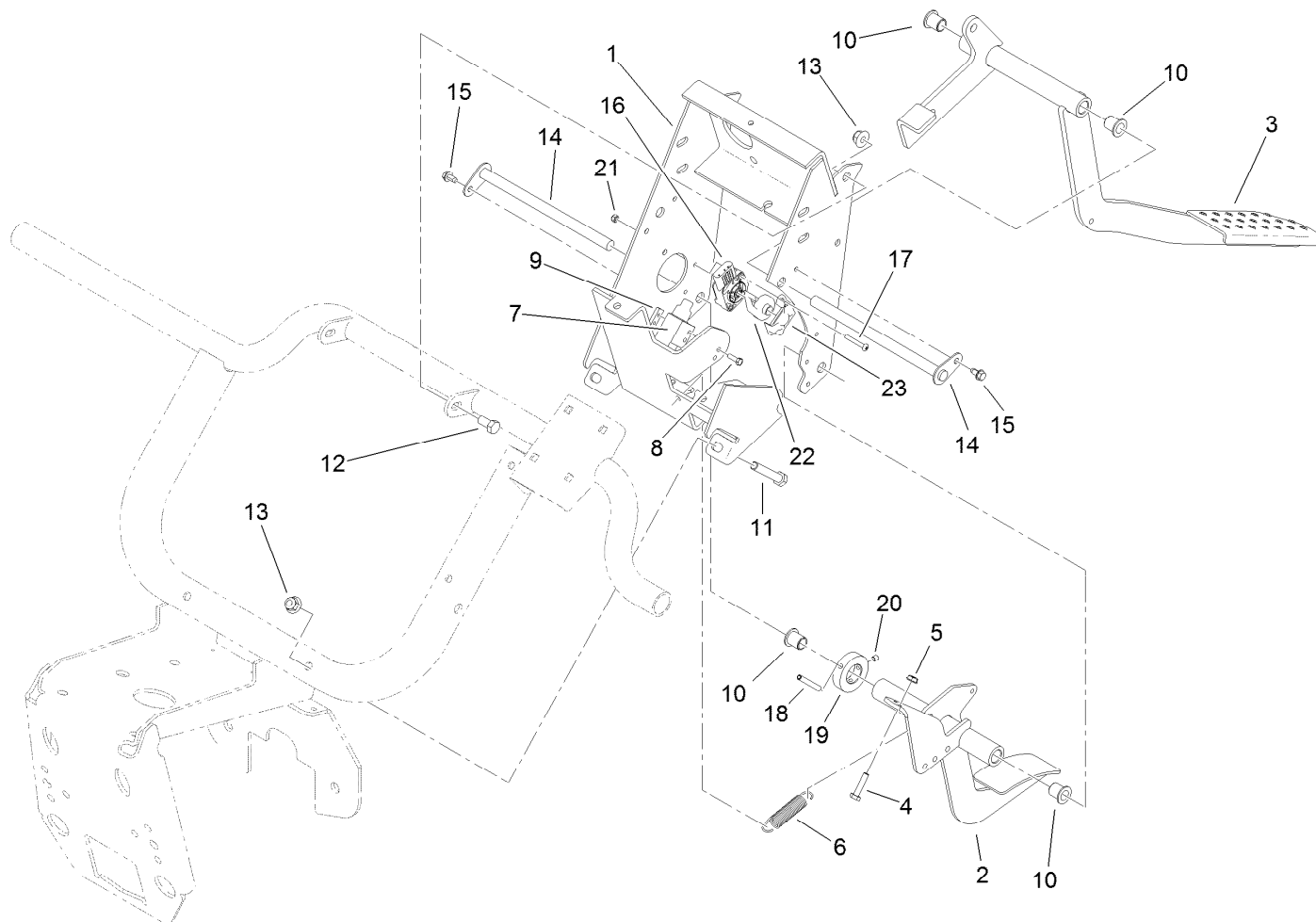
| <i>Ref.</i> | <i>Part Number</i> | <i>Qty.</i> | <i>Description</i> | <i>Ref.</i> | <i>Part Number</i> | <i>Qty.</i> | <i>Description</i> |
|-------------|--------------------|-------------|-------------------------|-------------|--------------------|-------------|------------------------|
| 31 | 98-8876 | 2 | Fuse-10 Amp | 41 | 104-7135 | 1 | Solenoid |
| 32 | 32105-13 | 2 | Screw-HWH | 45 | 218-489 | 2 | Holder-Fuse |
| 34 | 112-3376-03 | 1 | Plate-Mount, Electrical | 52 | 114-8305 | 1 | Angle-Mount, Dash (LH) |
| 35 | 115-7621 | 1 | Decal-Electrical | 53 | 3296-2 | 2 | Nut-Lock, NI |

● Not serviced separately



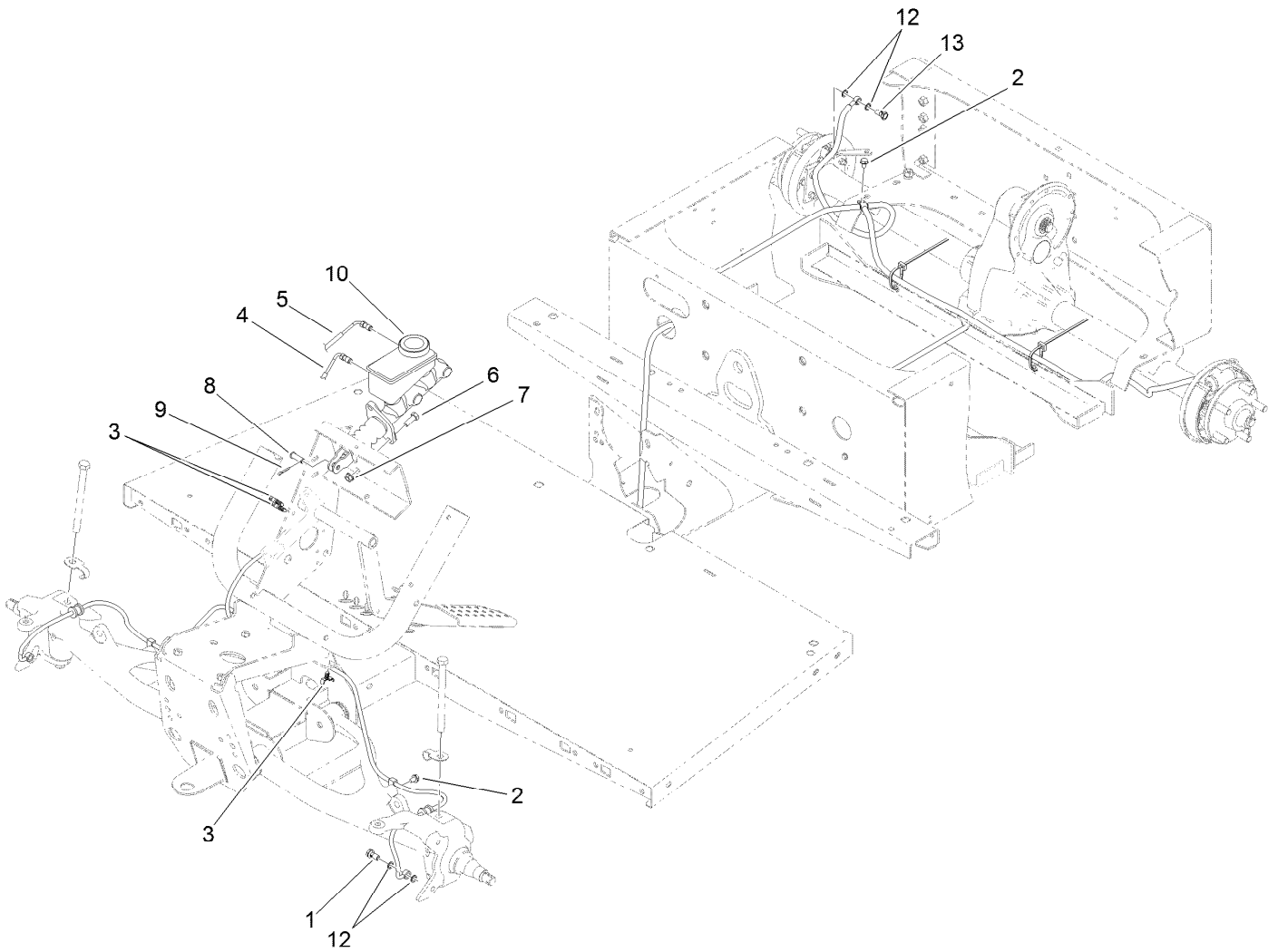
Solenoid Assembly No. 104-7135

| <i>Ref.</i> | <i>Part Number</i> | <i>Qty.</i> | <i>Description</i> |
|-------------|--------------------|-------------|--------------------|
| 1 | 3217-6 | 2 | Nut-Hex |
| 2 | 3253-4 | 2 | Washer-Lock |
| 3 | 3219-14 | 2 | Nut-Hex |
| 4 | 3253-17 | 2 | Washer-Lock |



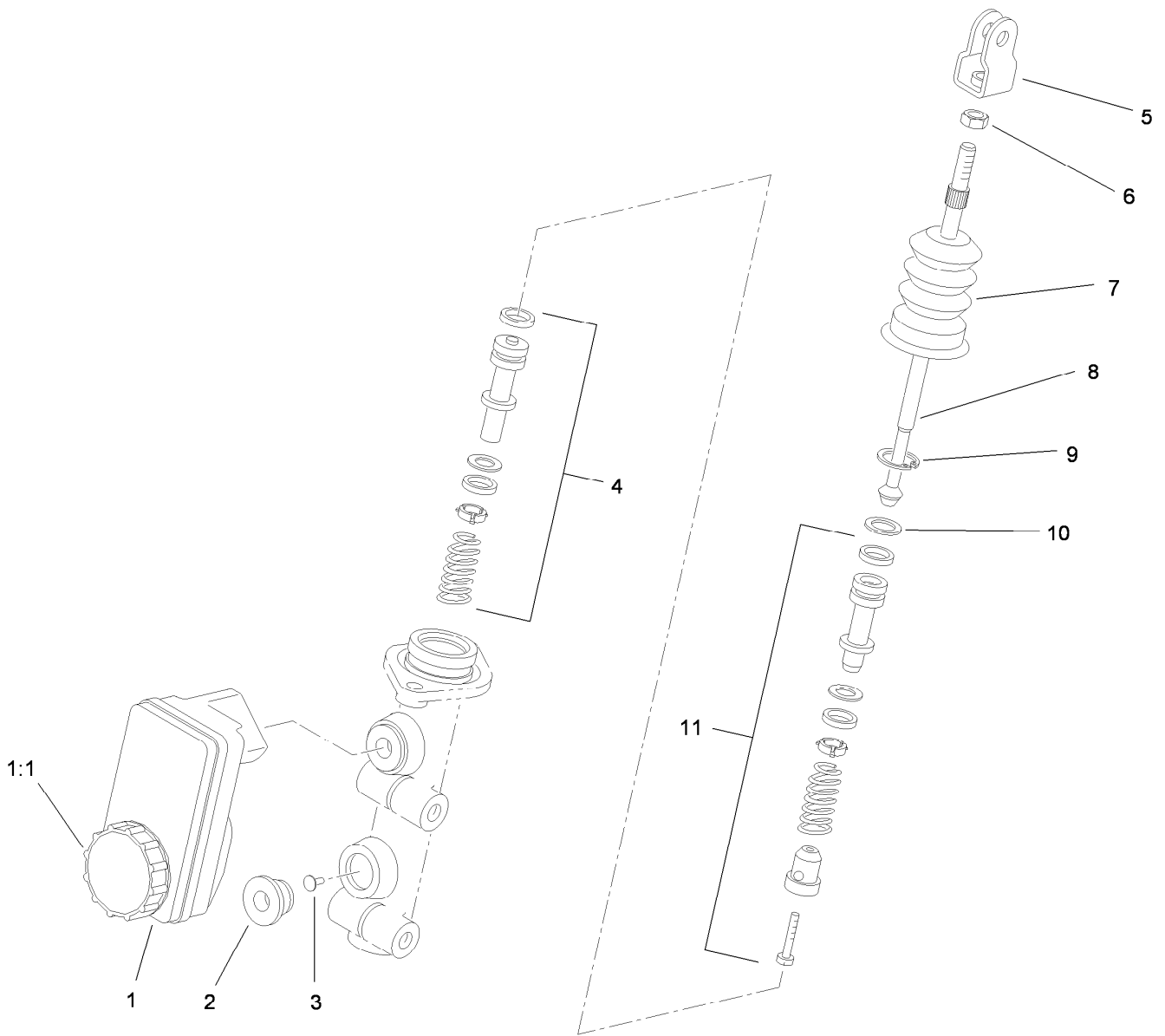
Pedal Box Assembly

| <i>Ref.</i> | <i>Part Number</i> | <i>Qty.</i> | <i>Description</i> | <i>Ref.</i> | <i>Part Number</i> | <i>Qty.</i> | <i>Description</i> |
|-------------|--------------------|-------------|-------------------------|-------------|--------------------|-------------|-------------------------|
| 1 | 119-0748-03 | 1 | Pedal Support Frame ASM | 13 | 104-8301 | 4 | Nut-Flange, NI |
| 2 | 115-7630-03 | 1 | Throttle Pedal ASM | 14 | 104-7164 | 2 | Pivot-Pedal |
| 3 | 112-3314-03 | 1 | Brake Pedal ASM | 15 | 12-3270 | 2 | Screw |
| 4 | 321-7 | 2 | Screw-HH | 16 | 119-0737 | 1 | Sensor-Position, 5K Ohm |
| 5 | 32149-2 | 2 | Nut-Keps | 17 | 104-1452 | 2 | Screw-PPH |
| 6 | 104-6415 | 1 | Spring-Return, Pedal | 18 | 117-5071 | 1 | Pin-Roll |
| 7 | 99-7407 | 1 | Switch | 19 | 104-7301 | 1 | Collar |
| 8 | 3290-134 | 2 | Screw | 20 | 3245-32 | 2 | Screw-HSH |
| 9 | 1-633181 | 1 | Plate-Tapped | 21 | 3296-1 | 2 | Nut-Lock |
| 10 | 256-155 | 4 | Bushing-Flange | 22 | 117-5059 | 1 | Pivot-Sensor, Speed |
| 11 | 323-11 | 2 | Screw-HH | 23 | 117-5061 | 1 | Retainer |
| 12 | 323-4 | 2 | Screw-HH | | | | |



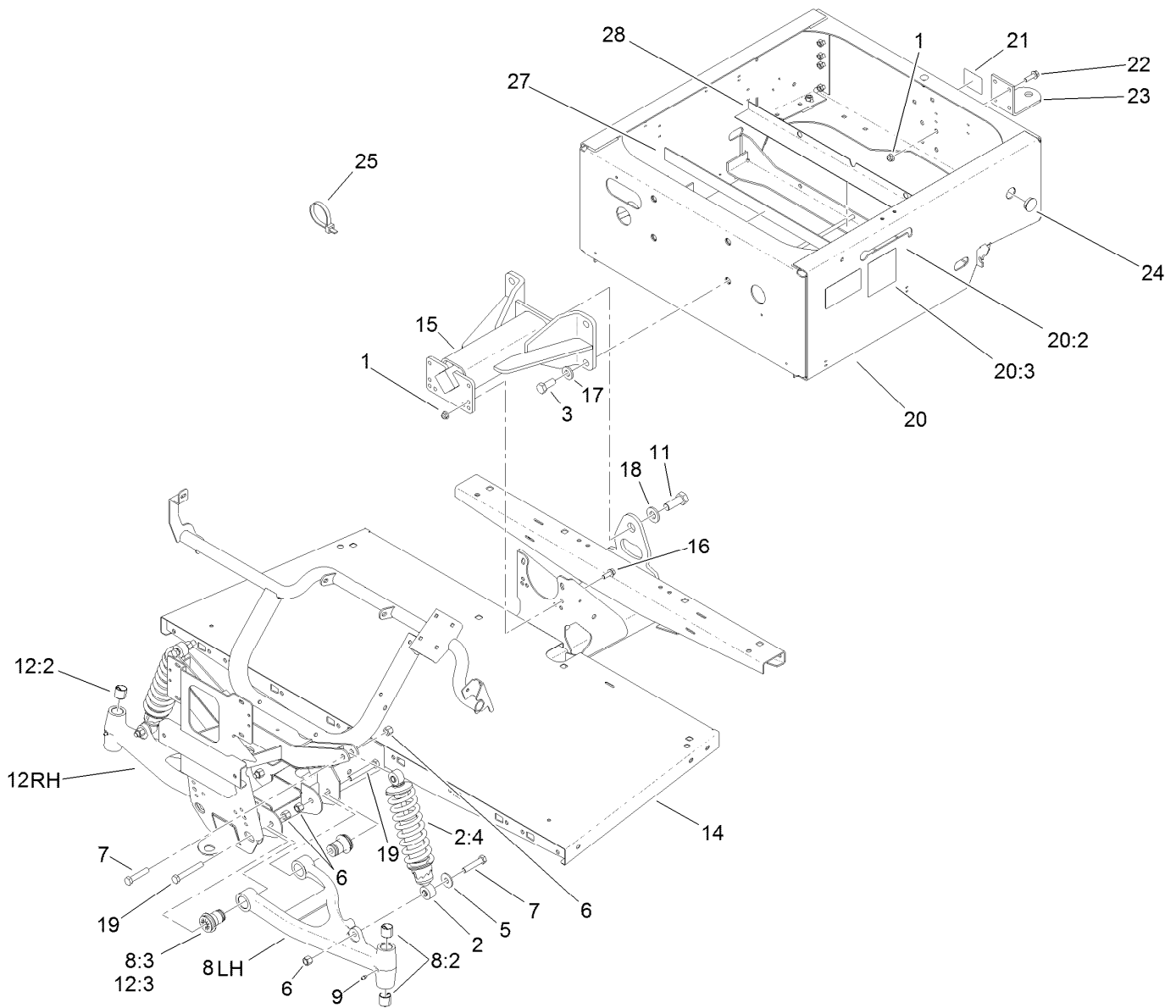
Master Cylinder and Brake Line Assembly

| Ref. | Part Number | Qty. | Description |
|------|-------------|------|---------------------|
| 1 | 120-4875 | 2 | Bolt-Flange, Banjo |
| 2 | 32104-82 | 3 | Screw-HHF |
| 3 | 114-8324 | 4 | Clip-Line, Brake |
| 4 | 119-9683 | 1 | Front Brake Line |
| 5 | 115-2409 | 1 | Rear Brake Line ASM |
| 6 | 323-6 | 2 | Screw-HH |
| 7 | 3290-357 | 2 | Nut-HHF, Whiz |
| 8 | 283-2 | 1 | Pin-Clevis |
| 9 | 3272-10 | 1 | Pin-Cotter |
| 10 | 104-6782 | 1 | Cylinder-Master |
| 12 | 115-2341 | 8 | Washer-Banjo |
| 13 | 115-2340 | 2 | Bolt-Banjo |



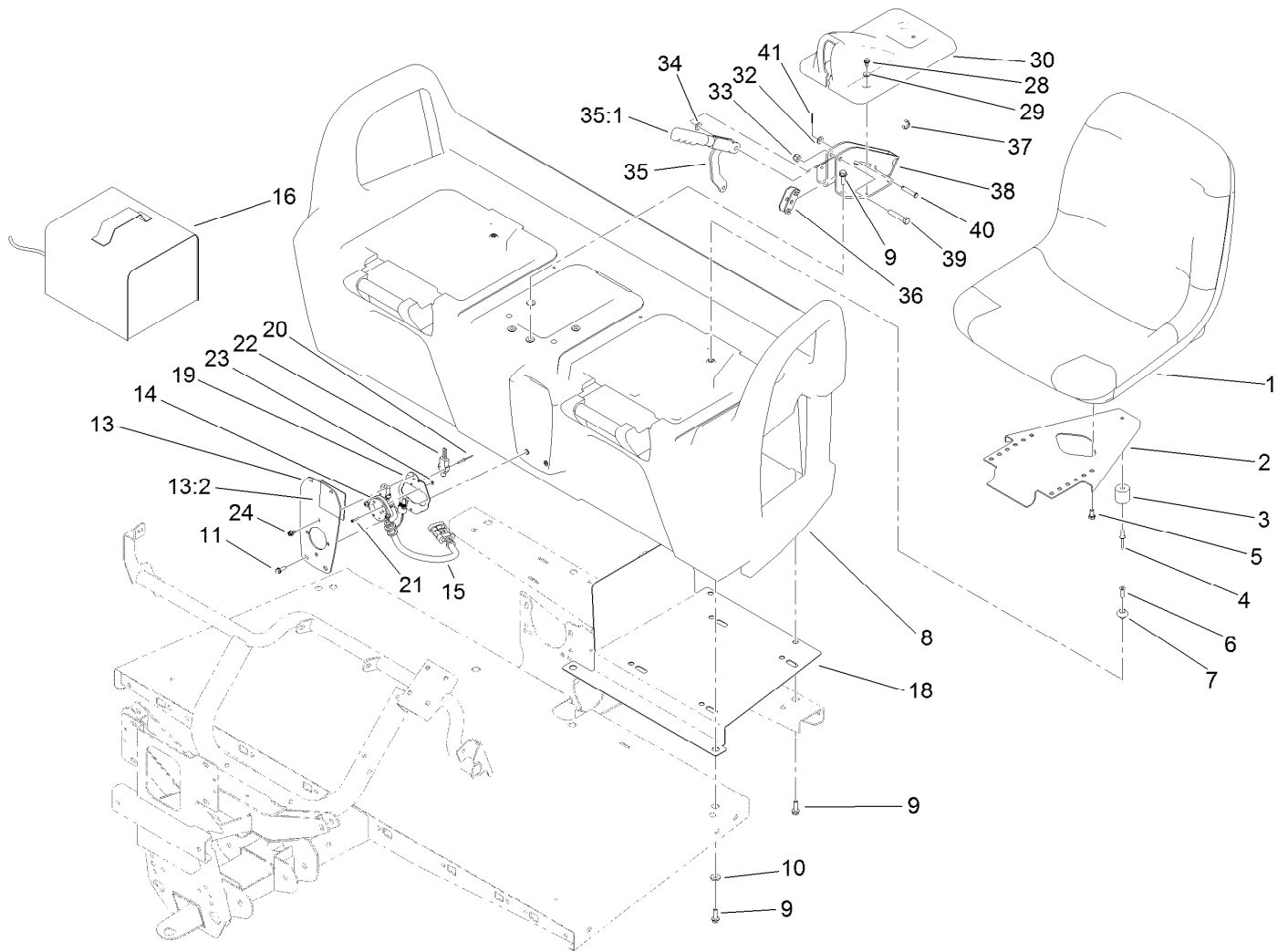
Master Cylinder Assembly No. 104-6782

| Ref. | Part Number | Qty. | Description |
|------|-------------|------|----------------------|
| 1 | 104-6845 | 1 | Reservoir ASM |
| 1:1 | 92-4112 | 1 | Cap ASM |
| 2 | 93-8971 | 2 | Seal-Port, Flange |
| 3 | 92-4103 | 1 | Pin-Stop |
| 4 | 92-4102 | 1 | Secondary Piston ASM |
| 5 | 92-4110 | 1 | Clevis |
| 6 | 21-0360 | 1 | Nut-Hex |
| 7 | 94-5209 | 1 | Cover-Dust |
| 8 | 94-5210 | 1 | Rod-Push |
| 9 | 92-4109 | 1 | Ring-Snap |
| 10 | 92-4108 | 1 | Retainer-Washer |
| 11 | 92-4101 | 1 | Primary Piston ASM |



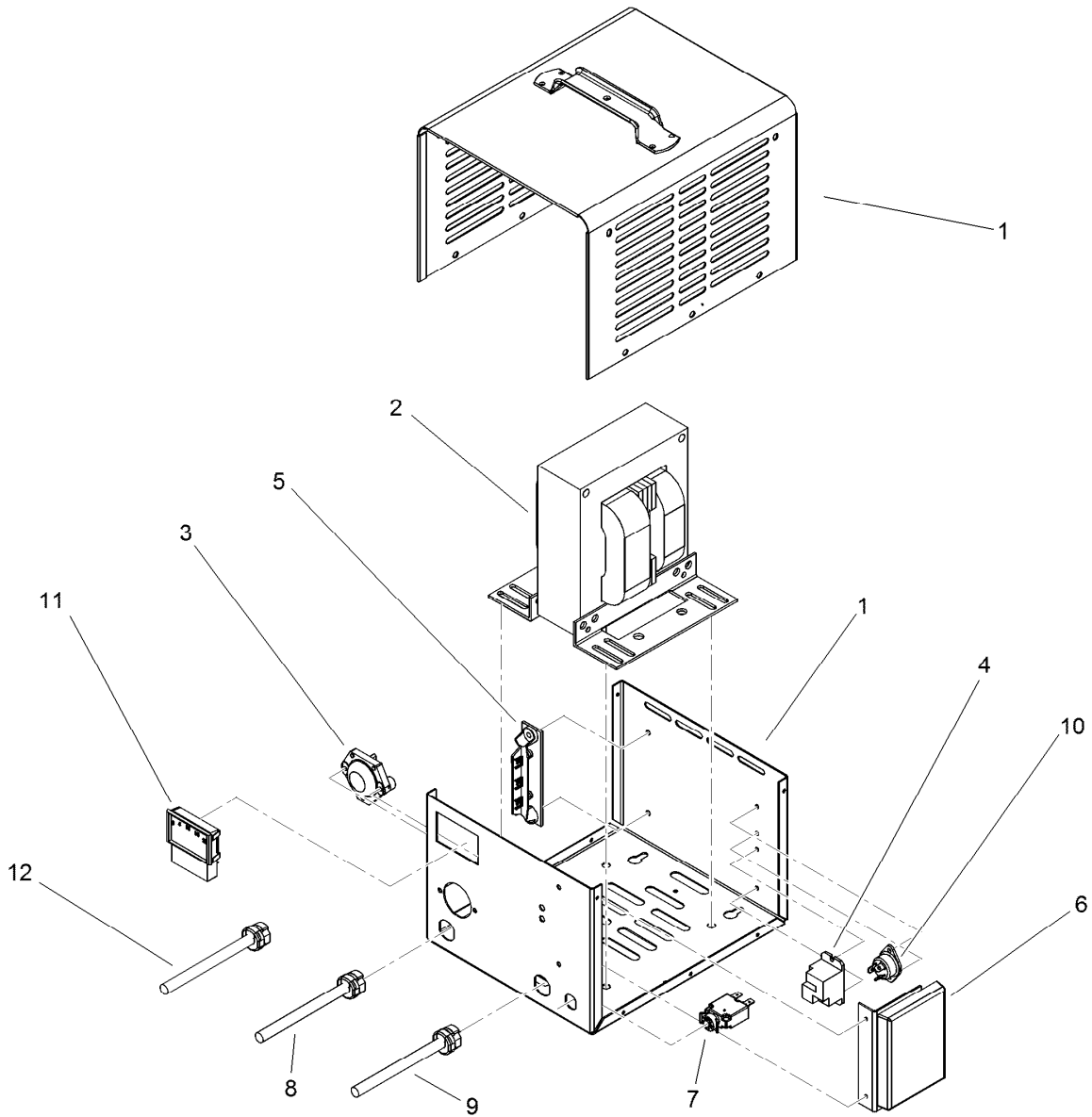
Frame Assembly

| Ref. | Part Number | Qty. | Description | Ref. | Part Number | Qty. | Description |
|------|-------------|------|------------------|------|-------------|------|----------------------------------|
| 1 | 104-8301 | 8 | Nut-Flange, NI | 15 | 99-7700 | 1 | Pivot Yoke ASM |
| 2 | 112-2975 | 2 | Shock/Spring ASM | 16 | 3234-11 | 4 | Screw-HHF |
| 2:4 | 112-3383 | 1 | Spring | 17 | 99-7667 | 4 | Washer-Flat |
| 3 | 327-4 | 4 | Screw-HH | 18 | 87-3060 | 1 | Washer-Hardened |
| 5 | 51-3500 | 2 | Washer | 19 | 325-14 | 4 | Screw-HH |
| 6 | 3296-23 | 8 | Nut-Lock, NI | 20 | 119-9631 | 1 | Rear Frame ASM |
| 7 | 325-10 | 4 | Screw-HH | 20:2 | 104-7207 | 2 | Decal-Electric |
| 8 | 114-8313 | 1 | LH A-Arm ASM | 20:3 | 107-0257 | 1 | Decal-Polarity |
| 8:2 | 3-0348 | 2 | Bushing | 21 | 99-7350 | 1 | Decal-Rating, Hitch (Light Duty) |
| 8:3 | 87-1450 | 2 | Bushing-Flange | 22 | 3234-24 | 4 | Screw-HHF |
| 9 | 302-5 | 2 | Fitting-Grease | 23 | 99-7654-03 | 1 | Hitch-Duty, Light |
| 11 | 328-24 | 1 | Screw-HH | 24 | 94-1402 | 1 | Plug-Hole |
| 12 | 114-8314 | 1 | RH A-Arm ASM | 25 | 3290-379 | 15 | Tie-Cable |
| 12:2 | 3-0348 | 2 | Bushing | 27 | 107-0252 | 1 | Pad-Battery |
| 12:3 | 87-1450 | 2 | Bushing-Flange | 28 | 107-0267 | 4 | Isolator-Battery |
| 14 | 112-3340-03 | 1 | Front Frame ASM | | | | |



Seat Base Assembly

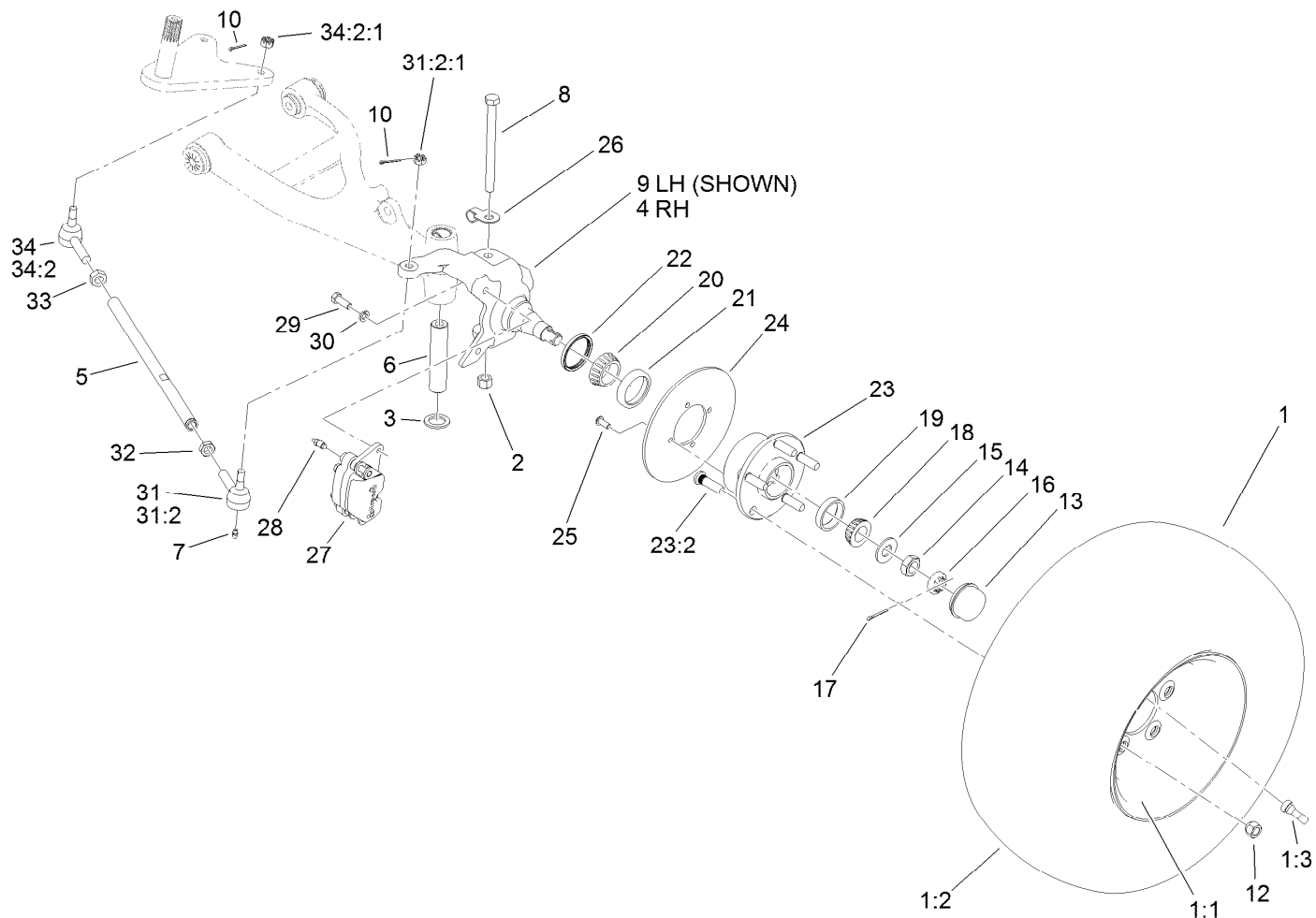
| Ref. | Part Number | Qty. | Description | Ref. | Part Number | Qty. | Description |
|------|-------------|------|----------------------------|------|-------------|------|--------------------------|
| 1 | 112-2923 | 2 | Seat ASM | 20 | 107-0333 | 2 | Rivet-Pop |
| 2 | 99-7829 | 2 | Bracket-Seat | 21 | 107-0334 | 2 | Screw-HSH |
| 3 | 99-7830 | 2 | Rubber Receptical ASM | 22 | 99-3410 | 1 | Switch |
| 4 | 3290-412 | 2 | Rivet | 23 | 3296-9 | 2 | Nut-Lock |
| 5 | 33114-016 | 8 | Screw-HH | 24 | 32104-17 | 4 | Screw-HWH |
| 6 | 32108-5 | 2 | Screw-FH | 28 | 12-3270 | 2 | Screw |
| 7 | 99-7833 | 2 | Post-Holding | 29 | 3256-1 | 2 | Washer-Flat |
| 8 | 104-6847 | 1 | Seat Base ASM | 30 | 104-7014 | 1 | Cover-Brake, Parking |
| 9 | 3234-17 | 12 | Screw-HHF | 32 | 3256-23 | 1 | Washer-Flat |
| 10 | 88-7200 | 8 | Washer-Flat | 33 | 3296-39 | 1 | Nut-Lock, NI |
| 11 | 32105-15 | 4 | Screw | 34 | 3290-477 | 1 | Washer-Curved |
| 13 | 107-0370 | 1 | Plate-Receptacle | 35 | 104-6842 | 1 | Lever-Brake, Park |
| 13:2 | 107-0295 | 1 | Decal-Charger | 35:1 | 106-7972 | 1 | Grip-Handle |
| 14 | 107-0288 | 1 | Receptacle-Charger | 36 | 87-3480 | 1 | Bracket-Equalizer, Cable |
| 15 | 115-1913 | 1 | Harness-Wire, Charger | 37 | 32120-47 | 2 | Ring-Retaining, External |
| 16 | 112-3072 | 1 | Charger-48V T145, Offboard | 38 | 104-6844-03 | 1 | Support-Brake, Park |
| 18 | 107-0359-03 | 1 | Tray-Seatbase | 39 | 323-10 | 1 | Screw-HH |
| 19 | 107-0716 | 1 | Bracket-Mount, Socket | 40 | 94-3829 | 1 | Pin-Clevis |
| | | | | 41 | 3272-6 | 1 | Pin-Cotter |



Offboard 48 Volt Charger Assembly No. 112-3072

| Ref. | Part Number | Qty. | Description |
|------|-------------|------|------------------------------|
| 1 | | 1 | Case ASM ● |
| 2 | | 1 | Transformer ASM ● |
| 3 | 108-1161 | 1 | Fuse ASM |
| 4 | 108-1162 | 1 | Relay-48V, Dc |
| 5 | 108-1163 | 1 | Diode ASM |
| 6 | 112-3073 | 1 | Control Board ASM |
| 7 | 110-2579 | 1 | Breaker-Circuit |
| 8 | 108-1166 | 1 | Kit-Cordset, 8.5 Foot (Dc) |
| 9 | 108-1167 | 1 | Kit-Cordset, 72 Inch (Ac) Us |
| 10 | 108-1168 | 1 | Terminal And Screw ASM |
| 11 | 108-1169 | 1 | Ammeter |
| 12 | 108-3071 | 1 | Kit-Cordset, 20 Foot (Dc) |

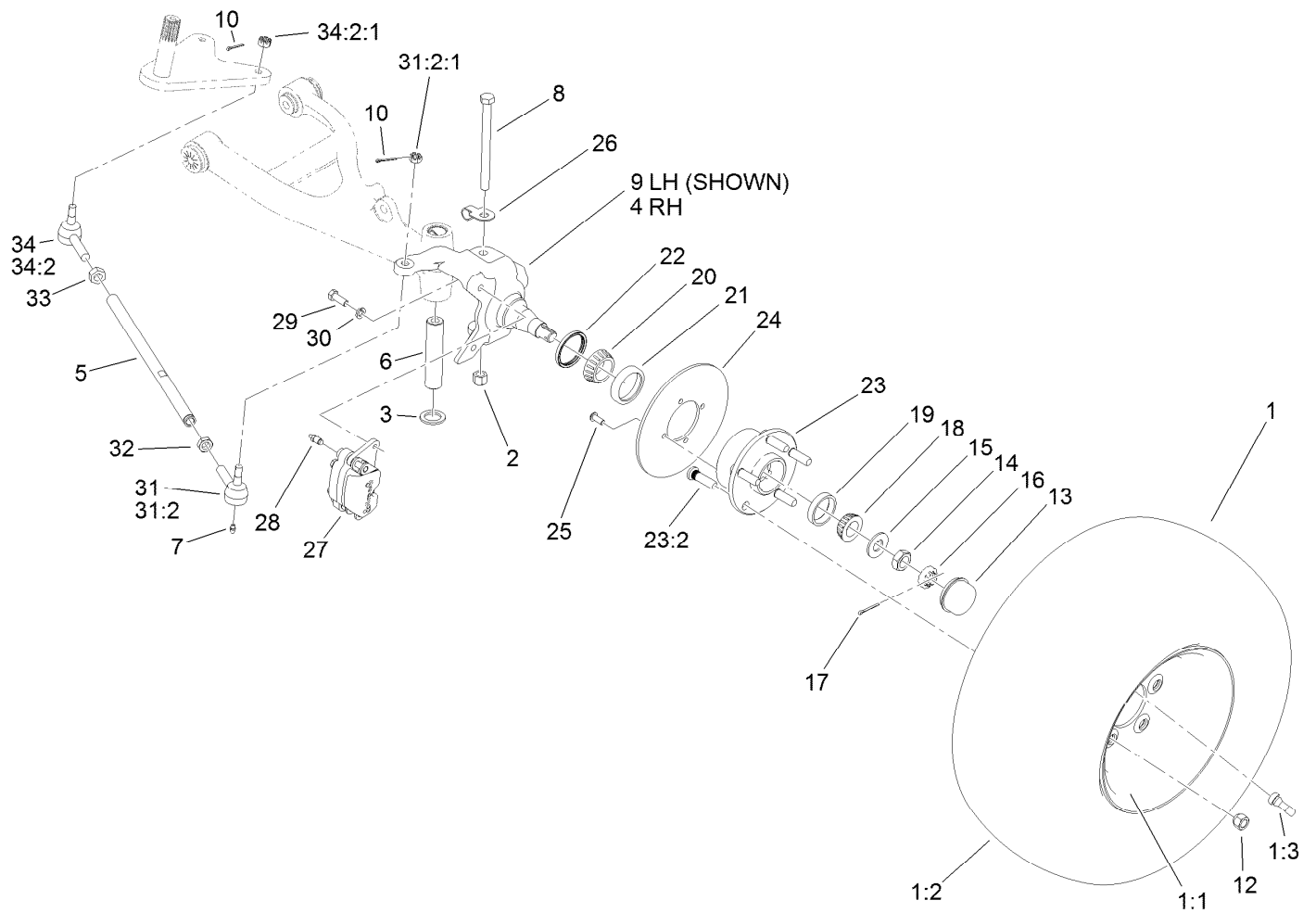
● Not serviced separately



Front Tire, Spindle and Tie Rod Assembly

| Ref. | Part Number | Qty. | Description | Ref. | Part Number | Qty. | Description |
|------|-------------|------|--------------------|--------|-------------|------|-----------------------|
| 1 | 104-7290 | 2 | Tire And Wheel ASM | 18 | 254-94 | 2 | Bearing-Cone, Tapered |
| 1:1 | 104-7288 | 1 | Wheel | 19 | 254-72 | 2 | Bearing-Cup, Tapered |
| 1:2 | 104-7289 | 1 | Tire | 20 | 254-106 | 2 | Cone-Bearing, Tapered |
| 1:3 | 232-27 | 1 | Stem-Valve | 21 | 254-107 | 2 | Cup-Bearing, Tapered |
| 2 | 3296-23 | 2 | Nut-Lock, NI | 22 | 108-7019 | 2 | Seal-Shaft |
| 3 | 256-115 | 2 | Washer-Thrust | 23 | 117-8071 | 2 | Hub ASM |
| 4 | 119-9522 | 1 | Spindle-RH | 23:2 | 10-6830 | 5 | Stud-Type, Drive |
| 5 | 115-7654 | 2 | Tie Rod | 24 | 119-9520 | 2 | Rotor |
| 6 | 99-7499 | 2 | Sleeve-Kingpin | 25 | 3274-55 | 8 | Screw-HSBH |
| 7 | 302-5 | 4 | Fitting-Grease | 26 | 112-3311 | 2 | Clip-Hose |
| 8 | 325-20 | 2 | Screw-HH | 27 | 119-9535 | 2 | Brake Caliper ASM |
| 9 | 119-9521 | 1 | Spindle-LH | 28 | 119-9509 | 2 | Screw-Bleed |
| 10 | 3272-7 | 4 | Pin-Cotter | 29 | 323-6 | 4 | Screw-HH |
| 12 | 242-50 | 10 | Nut-Lug | 30 | 3253-21 | 4 | Washer-Lock |
| 13 | 241-119 | 2 | Cap-Dust | 31 | 112771-03 | 2 | LH Ball Joint ASM |
| 14 | 3220-7 | 2 | Nut-Jam | 31:2 | | 1 | Joint-Ball, LH ● |
| 15 | 93-0309 | 2 | Washer-Tab | 31:2:1 | 915031 | 1 | Nut |
| 16 | 93-0307 | 2 | Nut-Lock, Retainer | 32 | 3218-21 | 2 | Nut-Jam |
| 17 | 3272-12 | 2 | Pin-Cotter | 33 | 3220-11 | 2 | Nut-Jam |

● Not serviced separately

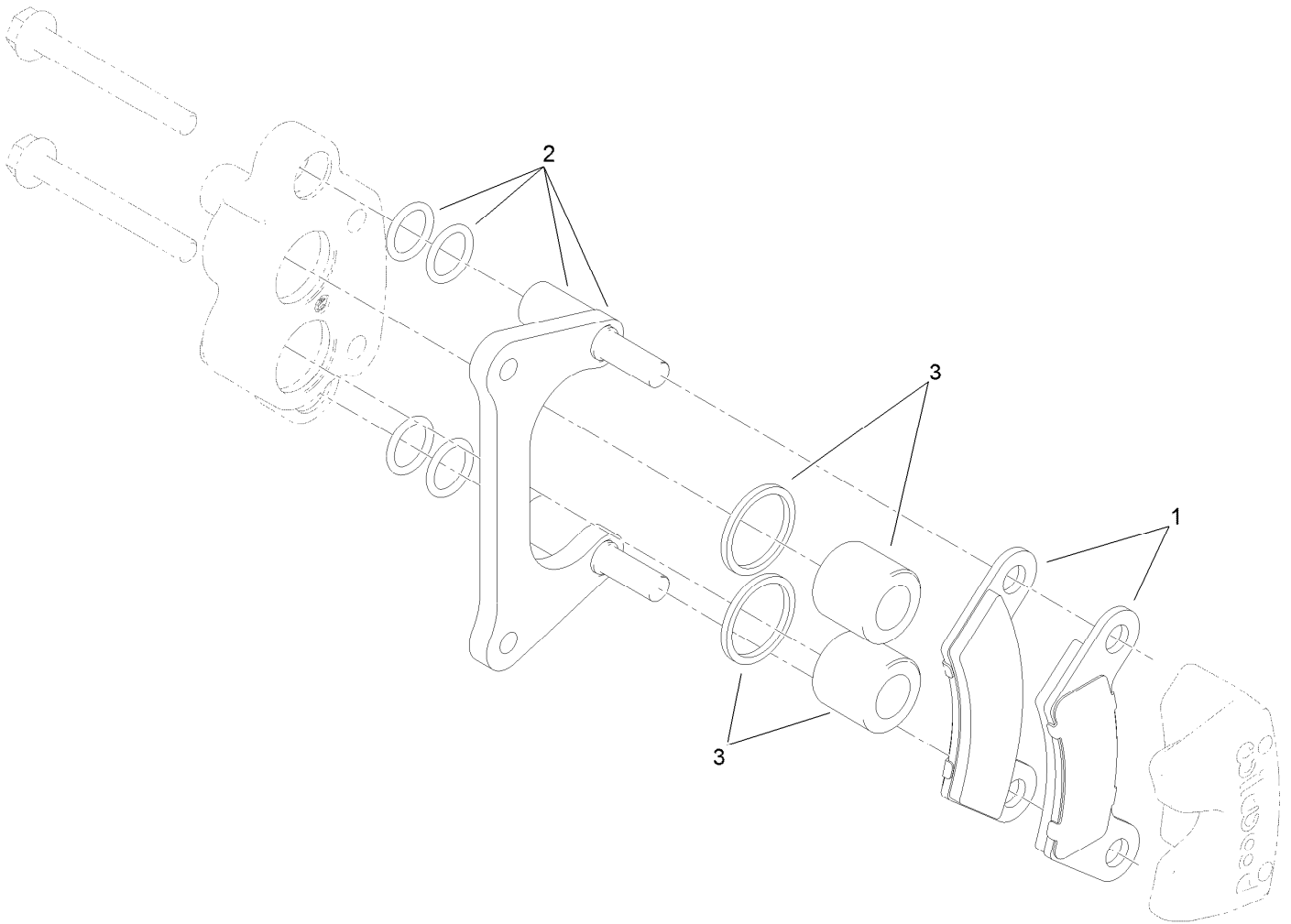


Front Tire, Spindle and Tie Rod Assembly (continued)

| Ref. | Part Number | Qty. | Description |
|------|-------------|------|-------------------|
| 34 | 112772-03 | 2 | RH Ball Joint ASM |

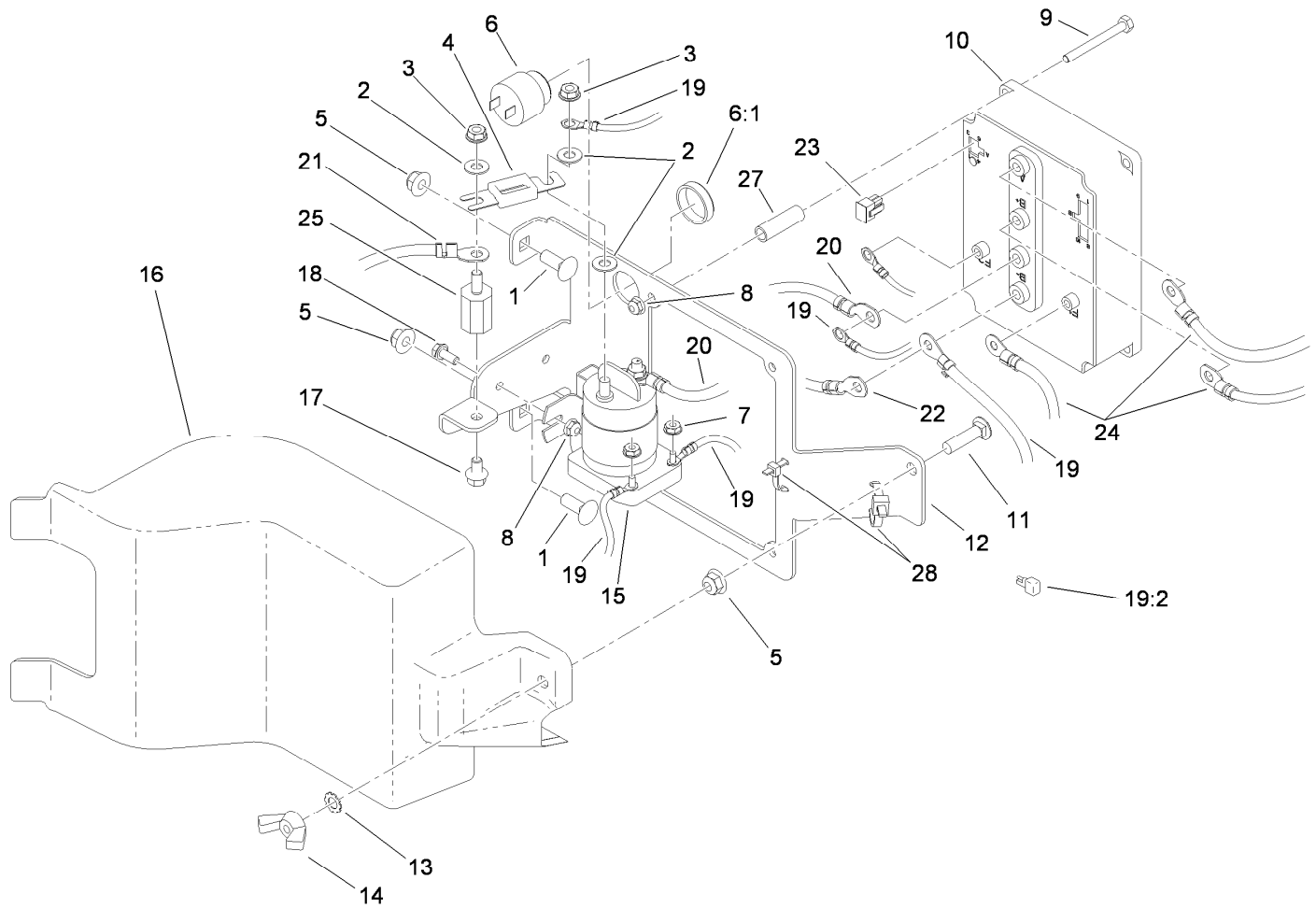
| Ref. | Part Number | Qty. | Description |
|--------|-------------|------|------------------|
| 34:2 | | 1 | Joint-Ball, RH ● |
| 34:2:1 | 915031 | 1 | Nut |

● Not serviced separately



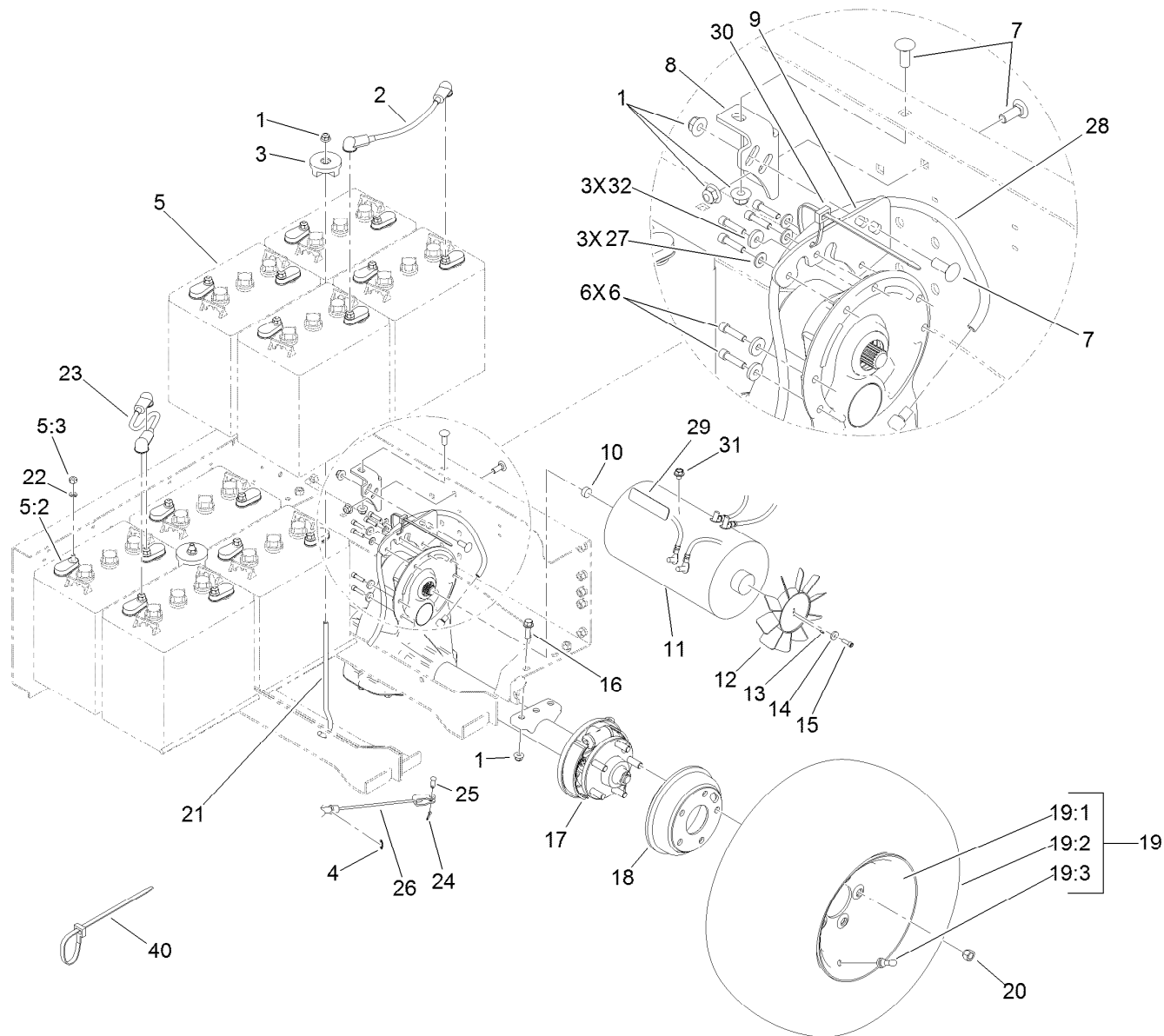
Brake Caliper Assembly No. 119-9535

| <i>Ref.</i> | <i>Part Number</i> | <i>Qty.</i> | <i>Description</i> |
|-------------|--------------------|-------------|--------------------|
| 1 | 119-9510 | 1 | Brake Pad Kit |
| 2 | 119-9511 | 1 | Bracket Kit |
| 3 | 119-9512 | 1 | Piston Kit |



Controller Assembly

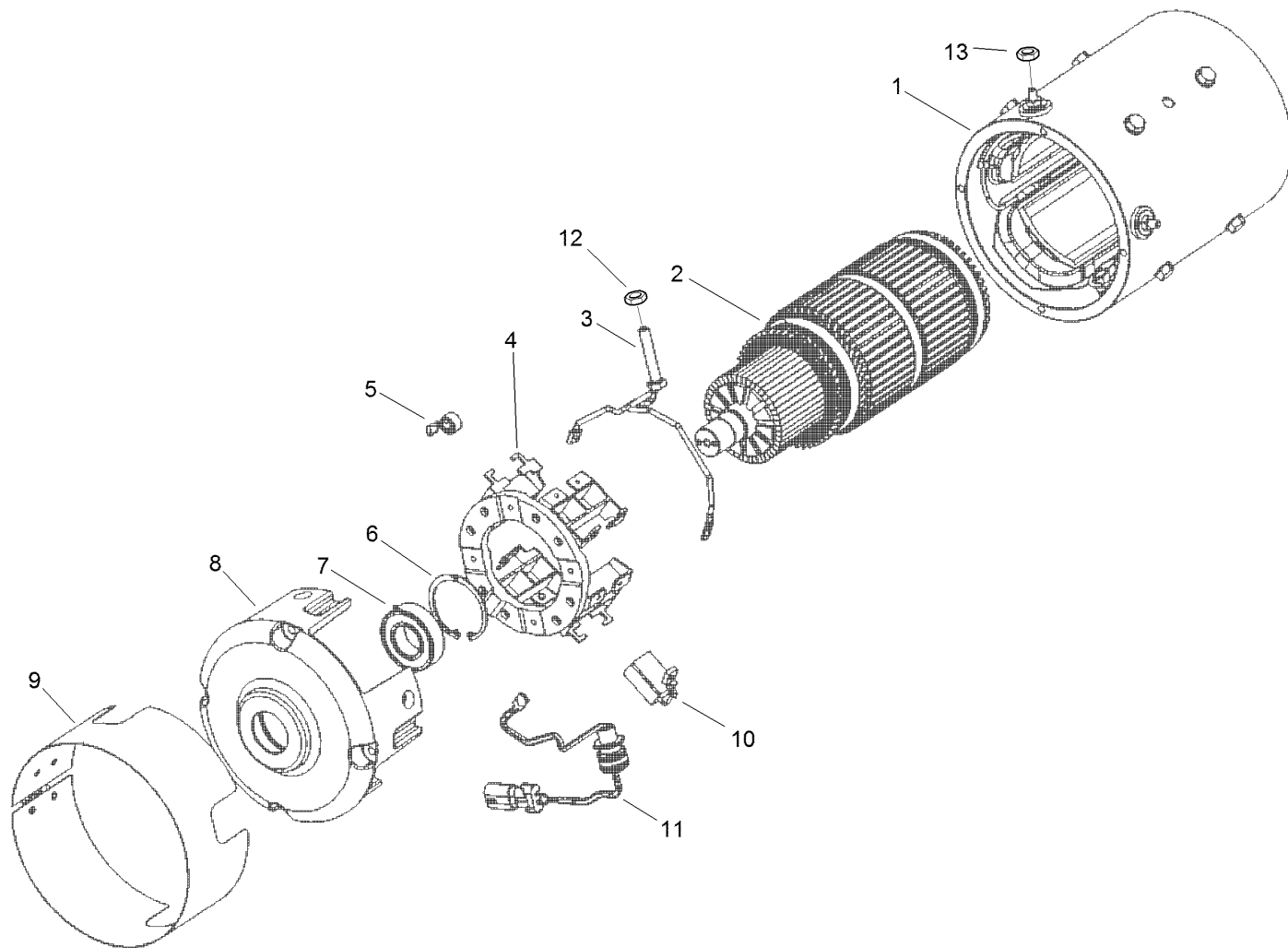
| <i>Ref.</i> | <i>Part Number</i> | <i>Qty.</i> | <i>Description</i> | <i>Ref.</i> | <i>Part Number</i> | <i>Qty.</i> | <i>Description</i> |
|-------------|--------------------|-------------|----------------------|-------------|--------------------|-------------|------------------------------|
| 1 | 3231-22 | 2 | Screw-CARR | 16 | 104-7138 | 1 | Cover-Controller |
| 2 | 107-0394 | 3 | Washer-Flat | 17 | 100-1719 | 1 | Screw-Flange |
| 3 | 107-0380 | 3 | Nut-HHF | 18 | 3234-33 | 2 | Screw-HHF |
| 4 | 104-7320 | 1 | Fuse | 19 | 117-4700 | 1 | Harness-Wire, Mid Duty Elect |
| 5 | 104-8301 | 3 | Nut-Flange, NI | 19:2 | 100-4918 | 1 | Diode |
| 6 | 94-5582 | 1 | Alarm-Audio | 20 | 107-0740 | 1 | Cable-Battery, Positive |
| 6:1 | 104-5107 | 1 | Nut-Plastic, Knurled | 21 | 107-0741 | 1 | Cable-Battery, Positive |
| 7 | 32149-8 | 2 | Nut-Keps | 22 | 107-0742 | 1 | Cable-Battery, Negative |
| 8 | 104-7201 | 6 | Nut-HF | 23 | 32160-130 | 1 | Connector |
| 9 | 321-15 | 4 | Screw-HH | 24 | 107-0737 | 1 | Harness-Wire, Battery Cable |
| 10 | 110-2569 | 1 | Controller-Sevcon | 25 | 107-0286 | 1 | Isolator |
| 11 | 3231-4 | 1 | Screw-CARR | 27 | 107-0285 | 4 | Spacer |
| 12 | 104-7137-03 | 1 | Mount-Controller | 28 | 3290-379 | 2 | Tie-Cable |
| 13 | 3255-9 | 1 | Washer-Lock | | | | |
| 14 | 32103-3 | 1 | Nut-Wing | | | | |
| 15 | 104-7136 | 1 | Contactor-48V | | | | |



Battery and Transaxle Assembly

| Ref. | Part Number | Qty. | Description | Ref. | Part Number | Qty. | Description |
|------|-------------|------|--------------------------|------|-------------|------|-------------------------|
| 1 | 104-8301 | 11 | Nut-Flange, NI | 18 | 104-6500 | 2 | Drum-Brake |
| 2 | 107-0739 | 1 | Cable-Battery, Positive | 19 | 104-7290 | 2 | Tire And Wheel ASM |
| 3 | 104-7149 | 2 | Hold Down ASM | 19:1 | 104-7288 | 1 | Wheel |
| 4 | 32120-47 | 2 | Ring-Retaining, External | 19:2 | 104-7289 | 1 | Tire |
| 5 | | 8 | Battery-Trojan T145 ● | 19:3 | 232-27 | 1 | Stem-Valve |
| 5:2 | 107-0289 | 2 | Cover-Terminal, Battery | 20 | 242-50 | 10 | Nut-Lug |
| 5:3 | 107-0388 | 2 | Nut | 21 | 104-7339 | 2 | Rod-Battery |
| 6 | 3274-26 | 6 | Screw-HSH | 22 | 107-0280 | 16 | Washer-Lock |
| 7 | 3231-22 | 5 | Screw-CARR | 23 | 107-0738 | 6 | Cable-Battery, Positive |
| 8 | 104-7249-03 | 1 | Bracket-Support | 24 | 3272-10 | 2 | Pin-Cotter |
| 9 | 104-7305-03 | 1 | Plate-Mount, Transaxle | 25 | 283-62 | 2 | Pin-Clevis |
| 10 | 112-3399 | 1 | Damper-Rubber | 26 | 110-2647 | 2 | Cable-Brake, Park |
| 11 | 104-7335 | 1 | Motor-Electric | 27 | 3256-22 | 3 | Washer-Flat |
| 12 | 107-0259 | 1 | Fan-10 Blade, Clockwise | 28 | 110-1872 | 1 | Hose-Fuel |
| 13 | 32121-68 | 2 | Pin-Roll | 29 | 107-0356 | 1 | Decal-Motor |
| 14 | 73-3580 | 1 | Washer | 30 | 3290-379 | 12 | Tie-Cable |
| 15 | 3274-8 | 1 | Screw-HSH | 31 | 107-0376 | 1 | Screw-HHF |
| 16 | 3234-24 | 4 | Screw-HHF | 32 | 73-3580 | 3 | Washer |
| 17 | 114-8330 | 1 | Transaxle-Electric | 40 | 3290-378 | 2 | Tie-Cable |

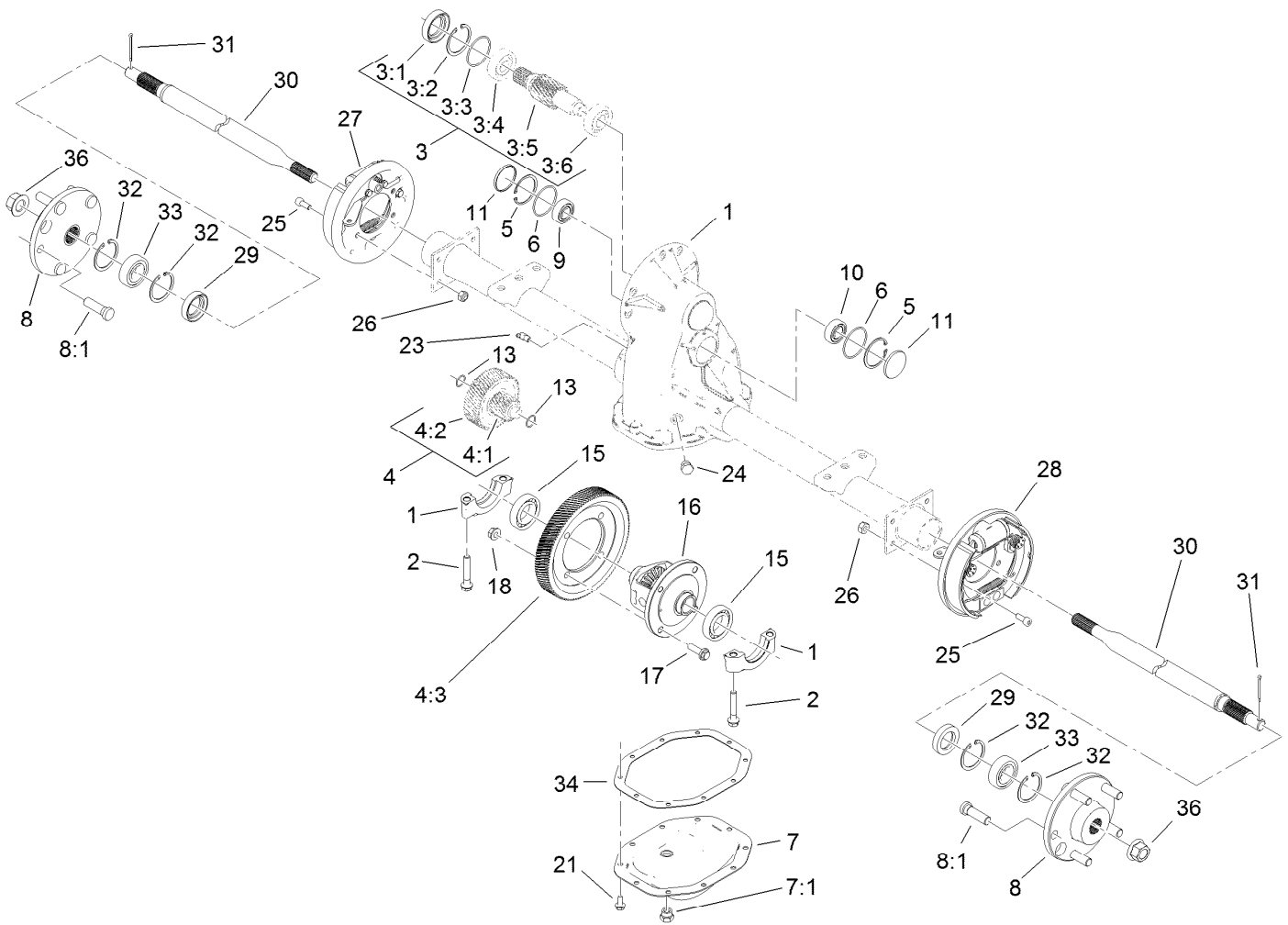
● Not serviced separately



Electric Motor Assembly No. 104-7335

| Ref. | Part Number | Qty. | Description |
|------|-------------|------|-----------------------|
| 1 | | 1 | Frame And Field ASM ● |
| 2 | | 1 | Armature ASM ● |
| 3 | 108-1151 | 2 | Brush Lead ASM |
| 4 | 108-1152 | 1 | Brush Box ASM |
| 5 | 108-1153 | 8 | Spring-Brush |
| 6 | 108-1154 | 1 | Ring-Retaining |
| 7 | 108-1155 | 1 | Bearing |
| 8 | 108-1156 | 1 | Head-Commutator |
| 9 | 108-1157 | 1 | Headband ASM |
| 10 | 108-1158 | 8 | Brush |
| 11 | 108-1159 | 1 | Thermal Sensor ASM |
| 12 | 3218-13 | 2 | Nut-Jam, Brass |
| 13 | 3218-14 | 2 | Nut-Jam, Brass |

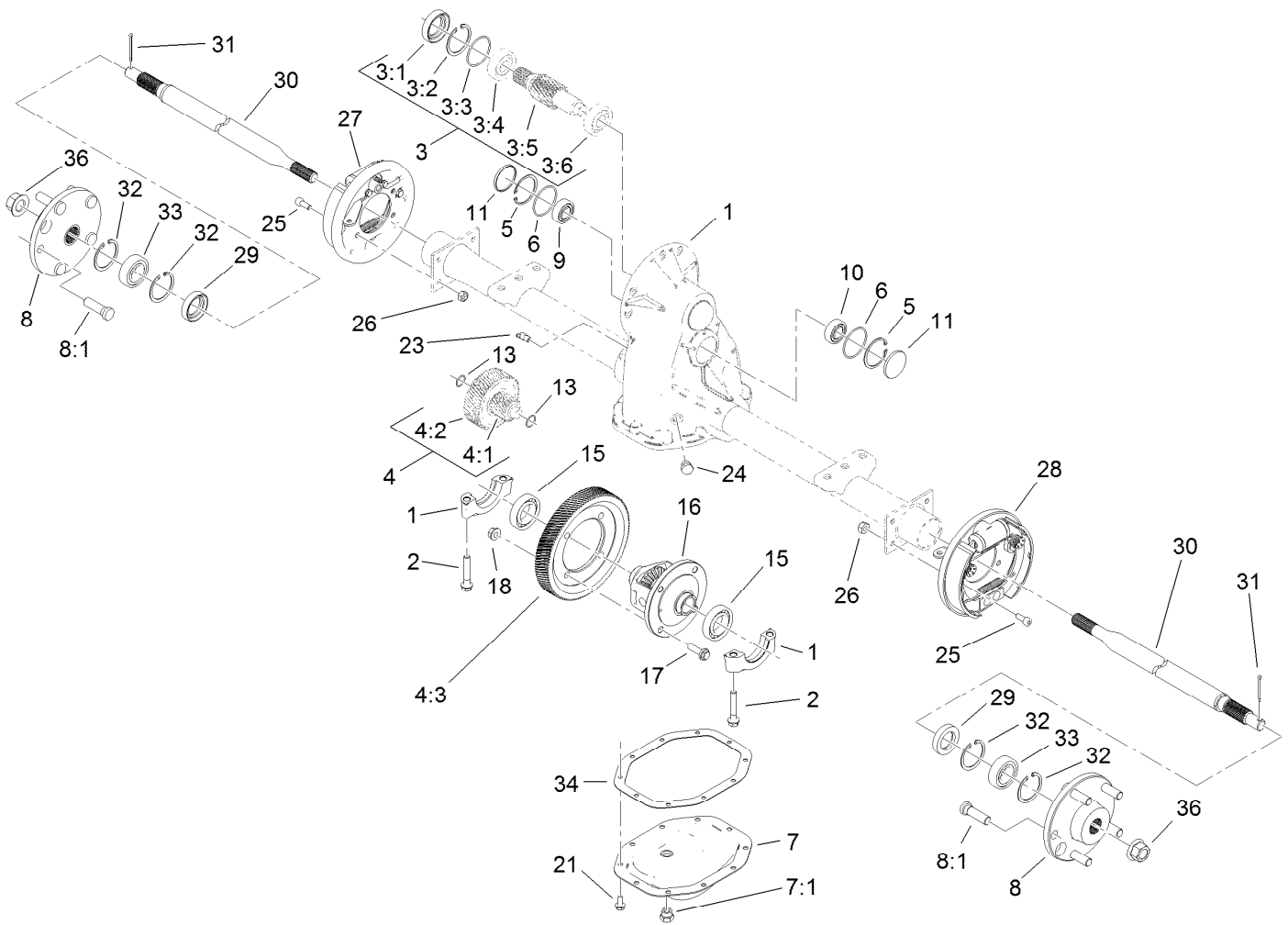
● Not serviced separately



Electric Transaxle Assembly No. 114-8330

| Ref. | Part Number | Qty. | Description | Ref. | Part Number | Qty. | Description |
|------|-------------|------|---------------------|------|-------------|------|------------------|
| 1 | | 1 | Transaxle ASM ● | 9 | 108-2406 | 1 | Bearing-Ball |
| 2 | 108-2401 | 4 | Bolt-Cap, Bearing | 10 | 108-2407 | 1 | Bearing-Ball |
| 3 | 115-2185 | 1 | Input Shaft Kit | 11 | 108-2408 | 2 | Plug-Cap, End |
| 3:1 | 108-2403 | 1 | Seal-Oil | 13 | 108-2410 | 2 | O-Ring |
| 3:2 | 108-2404 | 1 | Ring-Retaining | 15 | 108-2411 | 2 | Bearing-Ball |
| 3:3 | 108-2405 | 1 | O-Ring | 16 | 112-3138 | 1 | Differential ASM |
| 3:4 | | 1 | Bearing-Ball ● | 17 | 108-2413 | 4 | Screw-Hex |
| 3:5 | | 1 | Shaft-Input ● | 18 | 108-2414 | 4 | Nut-Lock |
| 3:6 | | 1 | Bearing-Ball ● | 21 | 108-2427 | 10 | Screw-Tapping |
| 4 | 108-2409 | 1 | Internal Gear Kit | 23 | 108-2428 | 1 | Elbow-90 Degree |
| 4:1 | | 1 | Shaft-Input ● | 24 | 108-2429 | 1 | Plug-HH |
| 4:2 | | 1 | Gear-Intermediate ● | 25 | 112-3139 | 8 | Screw-HSH |
| 4:3 | 110-2541 | 1 | Gear-Drive, Final | 26 | 108-2418 | 8 | Nut-Lock |
| 5 | 108-2404 | 2 | Ring-Retaining | 27 | 114-8332 | 1 | LH Brake ASM |
| 6 | 108-2405 | 2 | O-Ring | 28 | 114-8331 | 1 | RH Brake ASM |
| 7 | 108-2416 | 1 | Cover Kit | 29 | 112-3140 | 2 | Seal-Oil |
| 7:1 | 108-2415 | 1 | Plug-HH | 30 | 112-3141 | 2 | Shaft-Axle |
| 8 | 112-3136 | 2 | Hub ASM | 31 | 3272-12 | 2 | Pin-Cotter |
| 8:1 | 112-3137 | 1 | Bolt-Wheel | 32 | 108-2424 | 4 | Ring-Retaining |

● Not serviced separately

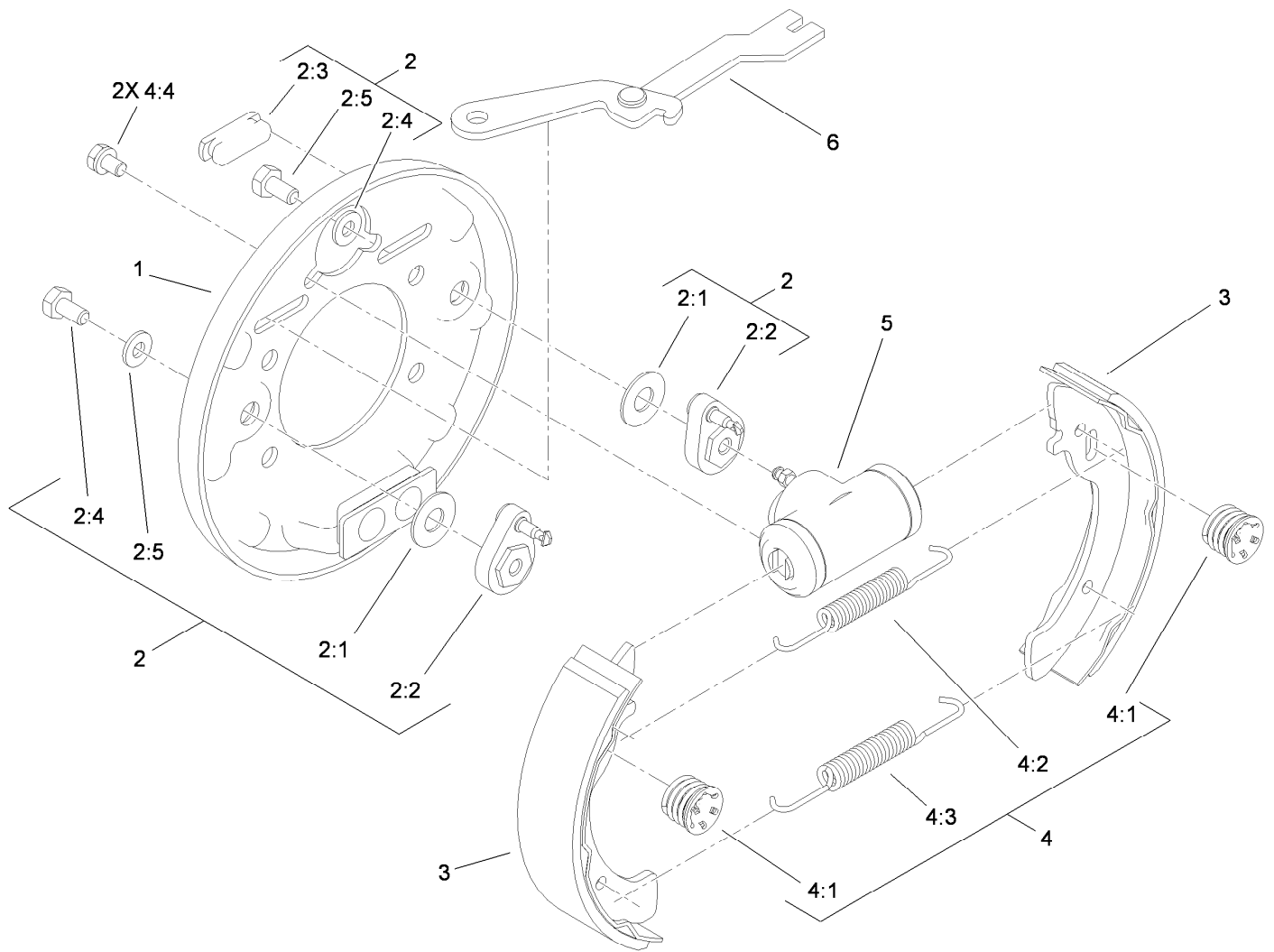


Electric Transaxle Assembly No. 114-8330 (continued)

| Ref. | Part Number | Qty. | Description |
|------|-------------|------|--------------|
| 33 | 108-2425 | 2 | Bearing-Ball |

| Ref. | Part Number | Qty. | Description |
|------|-------------|------|-------------|
| 34 | 108-3148 | 1 | Gasket |
| 36 | 112-3142 | 2 | Nut-HF |

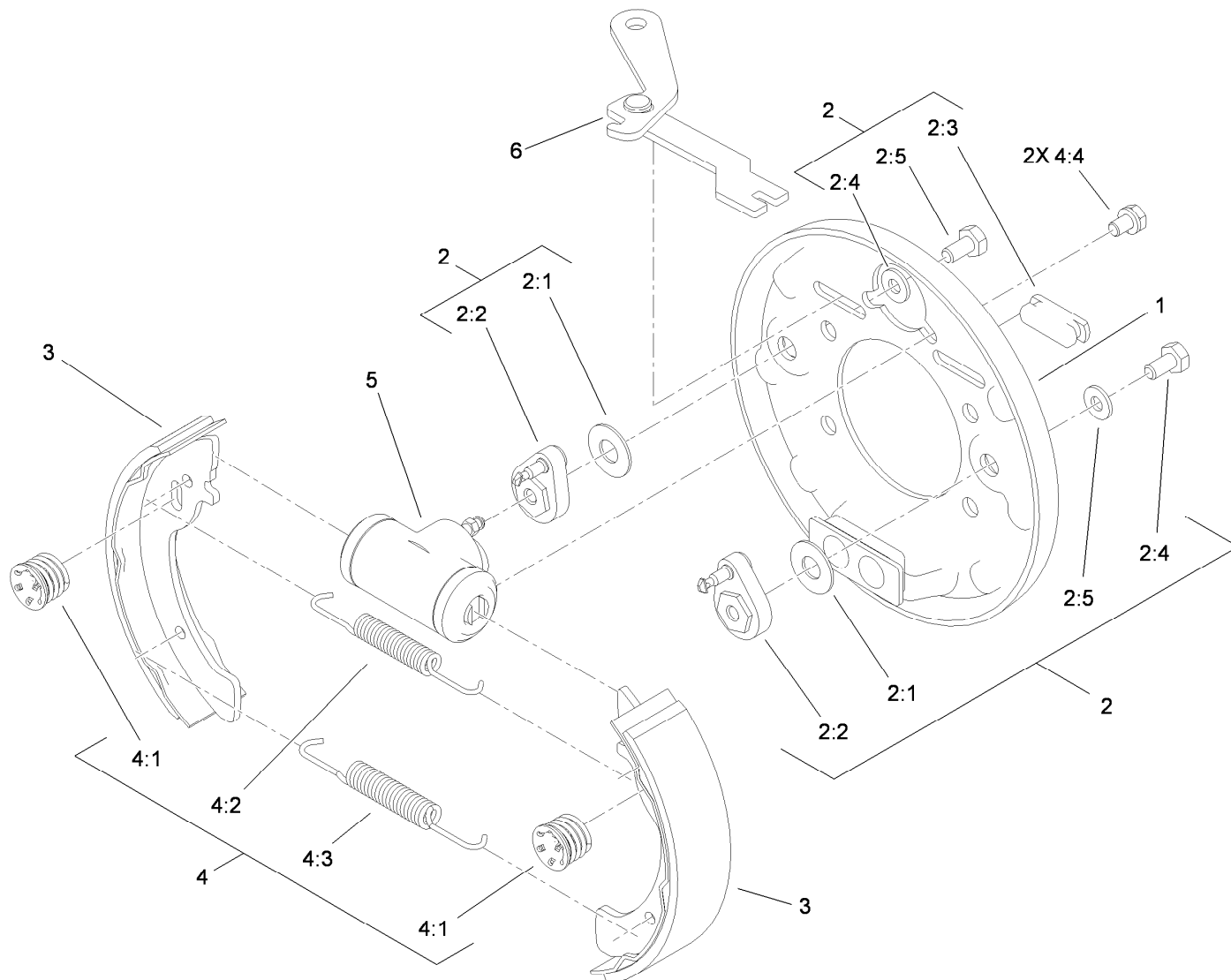
● Not serviced separately



LH Rear Brake Assembly No. 114-8332

| Ref. | Part Number | Qty. | Description |
|------|-------------|------|---------------------------|
| 1 | 100-8586 | 1 | Backing Plate ASM |
| 2 | 104-6820 | 1 | Adjuster Kit |
| 2:1 | 100-8585 | 2 | Washer-Bellville |
| 2:2 | 100-8588 | 2 | Adjuster Lever ASM |
| 2:3 | 100-8584 | 2 | Cover-Dust |
| 2:4 | | 2 | Washer ● |
| 2:5 | | 2 | Bolt ● |
| 3 | 104-6818 | 4 | Shoe And Lining Kit |
| 4 | 104-6819 | 1 | Hardware Kit |
| 4:1 | 100-8583 | 2 | Shoe Hold Down Spring ASM |
| 4:2 | 100-8581 | 2 | Spring-Upper |
| 4:3 | 100-8582 | 2 | Spring-Lower |
| 4:4 | | 2 | Bolt And Washer ● |
| 5 | 114-8333 | 1 | Wheel Cylinder ASM |
| 6 | 104-6825 | 1 | LH Park Brake Lever ASM |

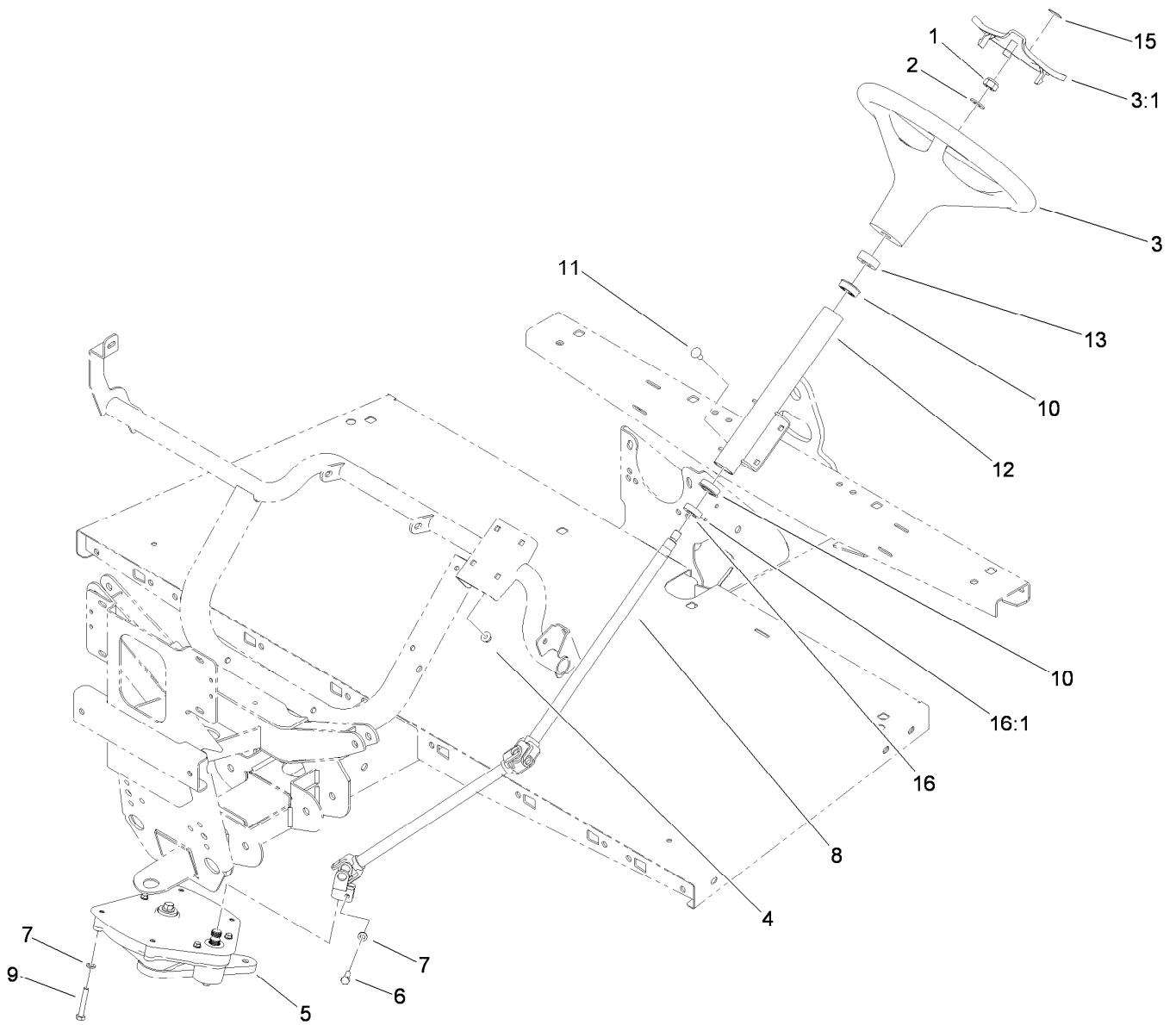
● Not serviced separately



RH Rear Brake Assembly No. 114-8331

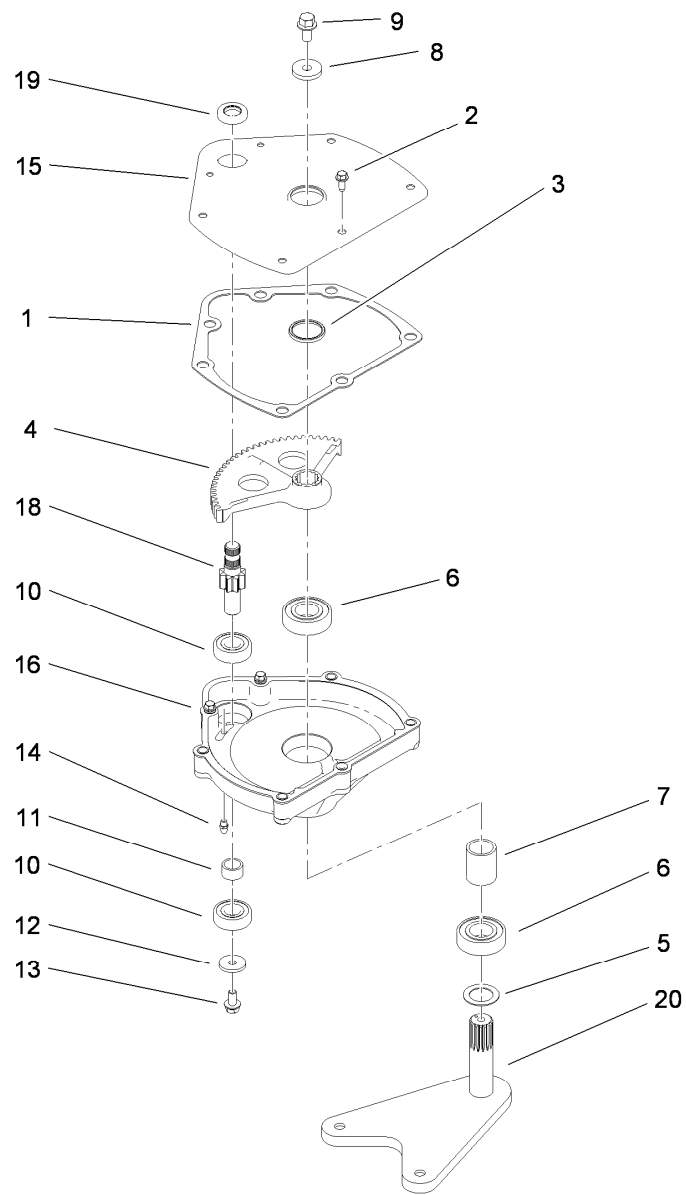
| Ref. | Part Number | Qty. | Description |
|------|-------------|------|---------------------------|
| 1 | 100-8586 | 1 | Backing Plate ASM |
| 2 | 104-6820 | 1 | Adjuster Kit |
| 2:1 | 100-8585 | 2 | Washer-Bellville |
| 2:2 | 100-8588 | 2 | Adjuster Lever ASM |
| 2:3 | 100-8584 | 2 | Cover-Dust |
| 2:4 | | 2 | Washer ● |
| 2:5 | | 2 | Bolt ● |
| 3 | 104-6818 | 4 | Shoe And Lining Kit |
| 4 | 104-6819 | 1 | Hardware Kit |
| 4:1 | 100-8583 | 2 | Shoe Hold Down Spring ASM |
| 4:2 | 100-8581 | 2 | Spring-Upper |
| 4:3 | 100-8582 | 2 | Spring-Lower |
| 4:4 | | 2 | Bolt And Washer ● |
| 5 | 114-8333 | 1 | Wheel Cylinder ASM |
| 6 | 104-6826 | 1 | RH Park Brake Lever ASM |

● Not serviced separately



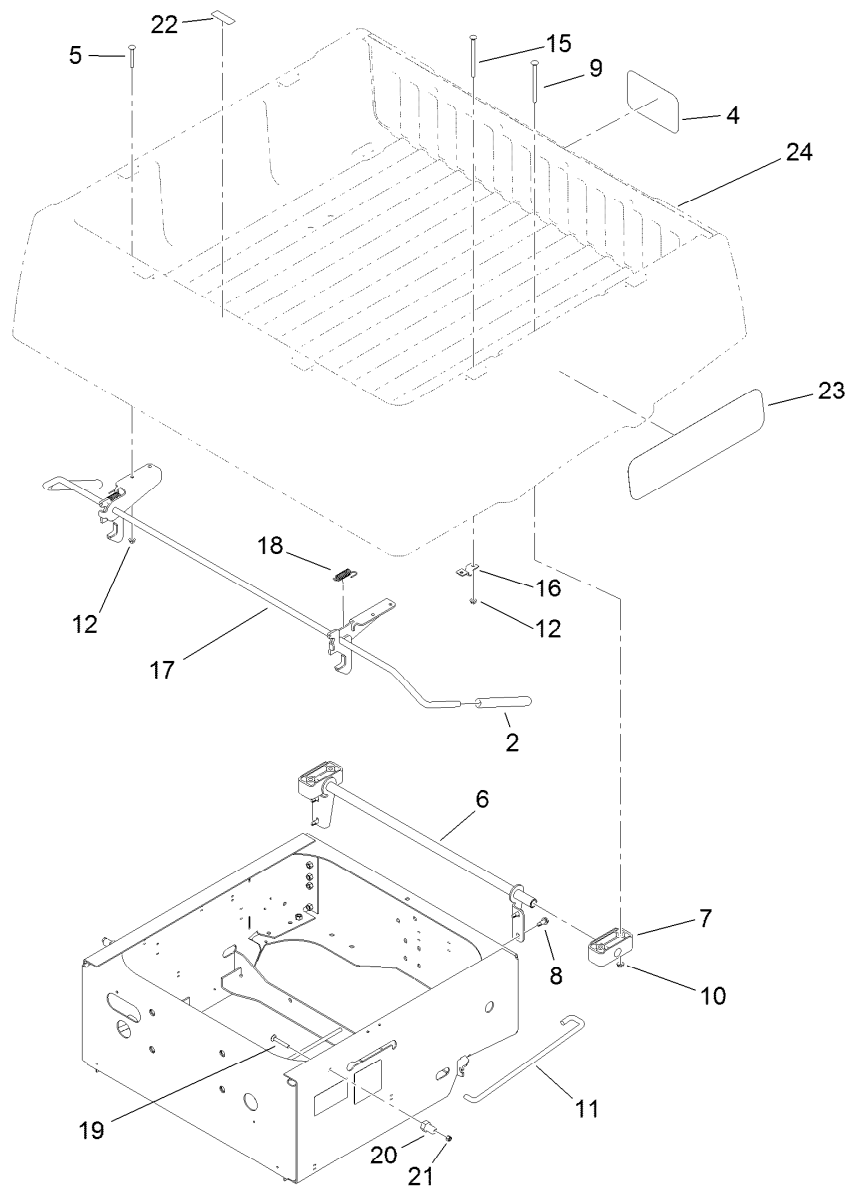
Upper Steering Assembly

| <i>Ref.</i> | <i>Part Number</i> | <i>Qty.</i> | <i>Description</i> | <i>Ref.</i> | <i>Part Number</i> | <i>Qty.</i> | <i>Description</i> |
|-------------|--------------------|-------------|-----------------------|-------------|--------------------|-------------|--------------------|
| 1 | 119-9493 | 1 | Nut-Lock, NI | 9 | 112-3305 | 4 | Screw-HH |
| 2 | 3256-26 | 1 | Washer-Flat | 10 | 112-3262 | 2 | Bearing |
| 3 | 98-1471 | 1 | Wheel-Steering | 11 | 3230-1 | 4 | Bolt-CARR |
| 3:1 | 98-1468 | 1 | Cover-Wheel, Steering | 12 | 112-3264-03 | 1 | Column ASM |
| 4 | 104-8300 | 4 | Nut-Flange, NI | 13 | 21-9260 | 1 | Cover-Dust |
| 5 | 112-3130 | 1 | Steering Box ASM | 15 | 98-1459 | 1 | Decal |
| 6 | 48-7730 | 1 | Screw-Cap, HH | 16 | 111383 | 1 | Collar |
| 7 | 3253-4 | 5 | Washer-Lock | 16:1 | 3245-32 | 1 | Screw-HSH |
| 8 | 112-3355 | 1 | Steering Shaft | | | | |



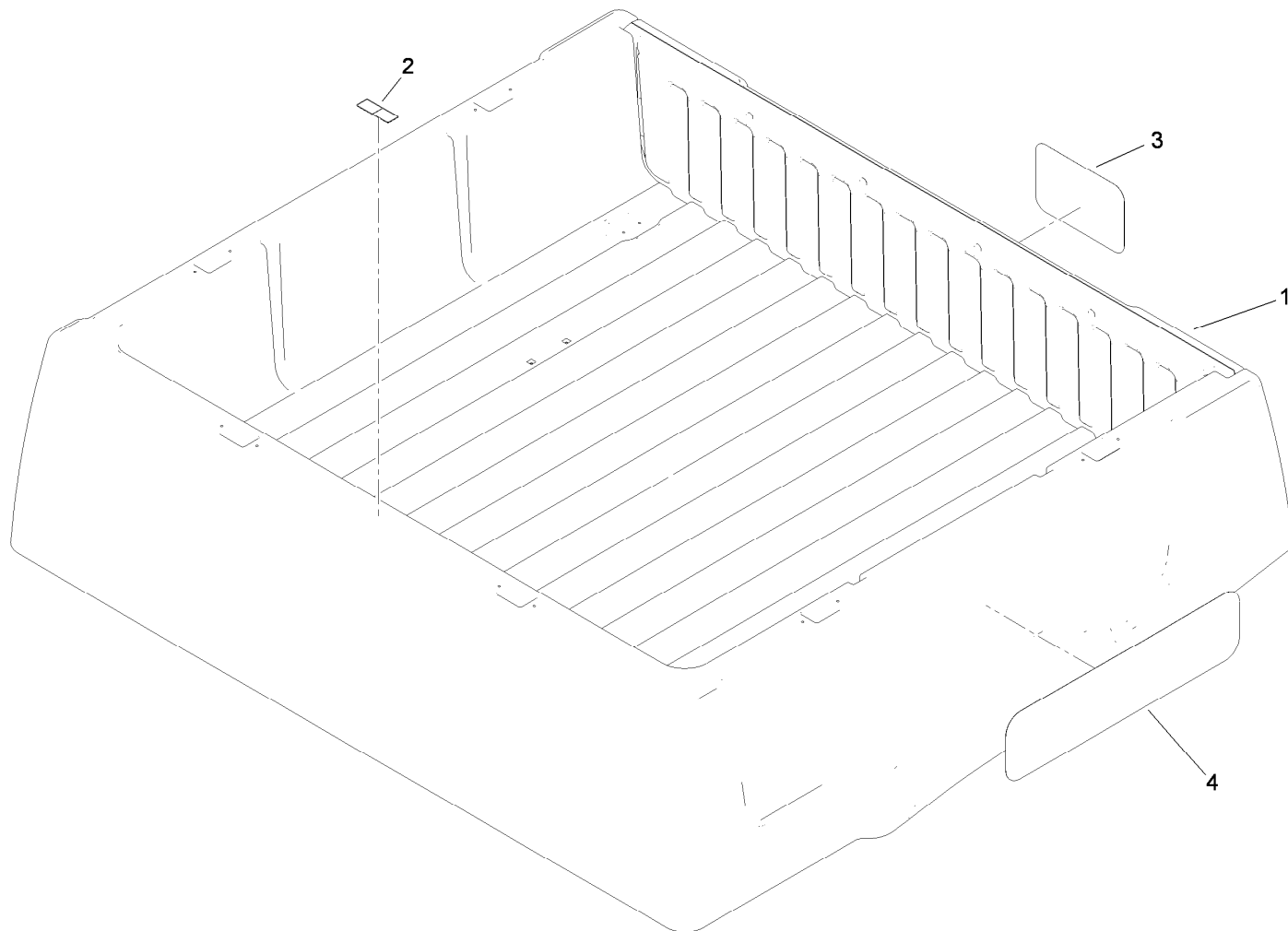
Steering Box Assembly No. 112-3130

| <i>Ref.</i> | <i>Part Number</i> | <i>Qty.</i> | <i>Description</i> | <i>Ref.</i> | <i>Part Number</i> | <i>Qty.</i> | <i>Description</i> |
|-------------|--------------------|-------------|--------------------|-------------|--------------------|-------------|-------------------------|
| 1 | 94-2135 | 1 | Gasket | 11 | 94-2217 | 1 | Spacer-Shaft, Input |
| 2 | 32144-10 | 3 | Screw-HWH | 12 | 1-613235 | 1 | Washer |
| 3 | 103118 | 1 | Seal | 13 | 98-3498 | 1 | Screw-HH |
| 4 | 99-7843 | 1 | Sector-Gear | 14 | 302-5 | 1 | Fitting-Grease |
| 5 | 3256-42 | 1 | Washer-Flat | 15 | 112-2918-03 | 1 | Cover-Housing, Steering |
| 6 | 251-82 | 2 | Bearing-Ball | 16 | 114-8309 | 1 | Housing-Steering |
| 7 | 112-2917 | 1 | Spacer | 18 | 115-7726 | 1 | Gear-Pinion |
| 8 | 104-6563 | 1 | Washer-Stepped | 19 | 99-7657 | 1 | Seal-Oil |
| 9 | 104-7156 | 1 | Screw-HHF | 20 | 112-3096-03 | 1 | Pitman Arm ASM |
| 10 | 38-7820 | 2 | Bearing-Ball | | | | |



Cargo Bed and Tailgate Installation Assembly

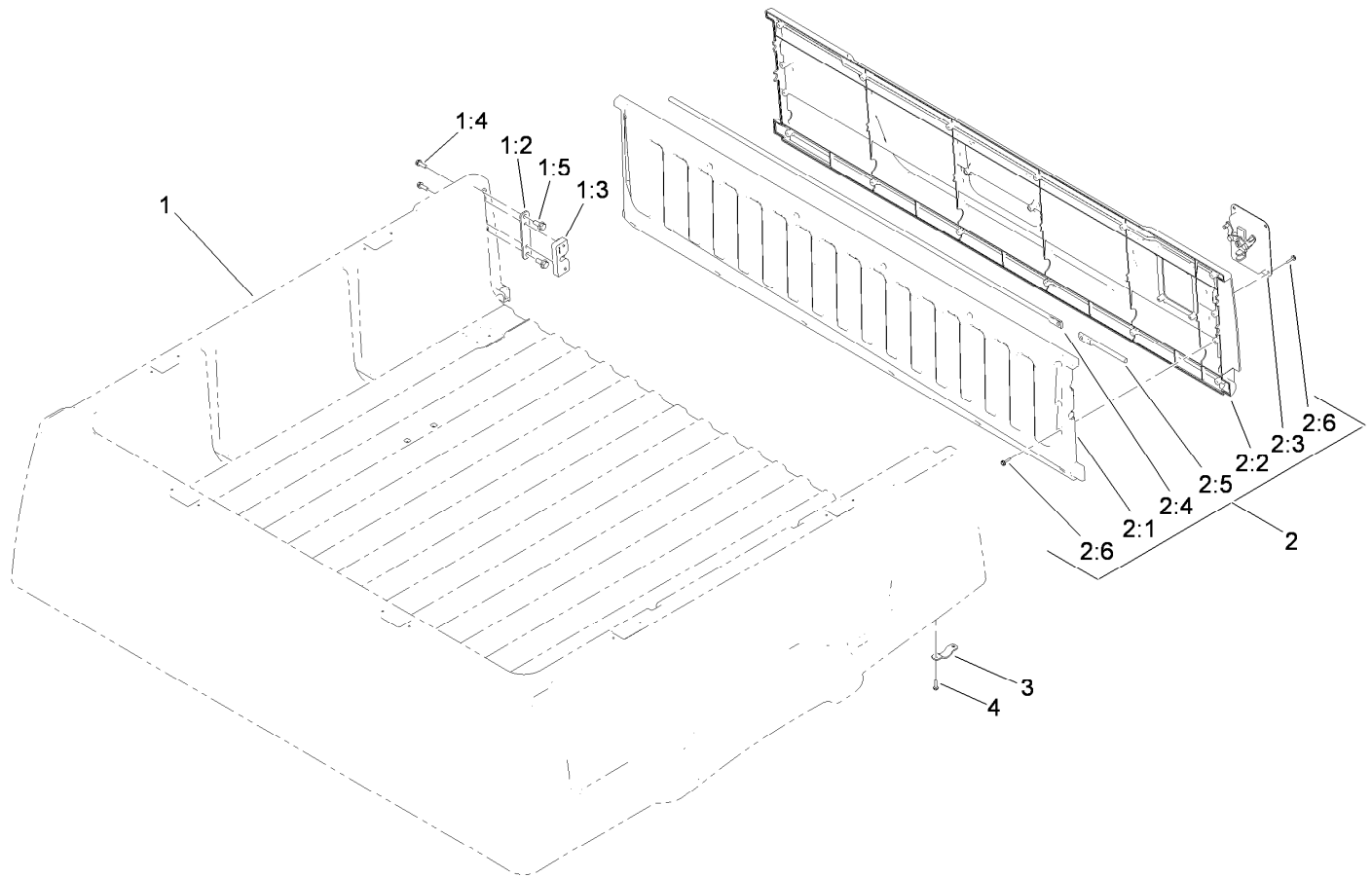
| <i>Ref.</i> | <i>Part Number</i> | <i>Qty.</i> | <i>Description</i> | <i>Ref.</i> | <i>Part Number</i> | <i>Qty.</i> | <i>Description</i> |
|-------------|--------------------|-------------|--------------------|-------------|--------------------|-------------|-----------------------|
| 2 | 119-9627 | 2 | Grip-Handle | 15 | 119-0914 | 2 | Bolt-CARR |
| 4 | 104-7213 | 1 | Decal | 16 | 99-7896 | 1 | Bracket-U, Prop Rod |
| 5 | 3230-8 | 4 | Screw-CARR | 17 | 119-0837 | 1 | Latch ASM |
| 6 | 119-0848-03 | 1 | Pivot Bracket ASM | 18 | 5-7290 | 2 | Spring-Tension |
| 7 | 119-0835 | 2 | Bushing-Pivot | 19 | 3230-7 | 2 | Screw-CARR |
| 8 | 105-6245 | 4 | Screw-Tapping | 20 | 104-7248 | 2 | Pin-Latch |
| 9 | 109-6795 | 4 | Bolt-CARR | 21 | 3296-29 | 2 | Nut-Lock, NI |
| 10 | 3290-357 | 4 | Nut-HHF, Whiz | 22 | 115-7739 | 1 | Decal-No Riders |
| 11 | 119-0844 | 1 | Rod-Prop | 23 | 119-9451 | 2 | Decal |
| 12 | 32128-20 | 6 | Nut-HF | 24 | 119-9710 | 1 | Cargo Bed Service ASM |



Cargo Bed Service Assembly No. 119-9710

| <i>Ref.</i> | <i>Part Number</i> | <i>Qty.</i> | <i>Description</i> |
|-------------|--------------------|-------------|------------------------------|
| 1 | | 1 | Cargo Bed And Tailgate ASM ● |
| 2 | 115-7739 | 1 | Decal-No Riders |
| 3 | 104-7213 | 1 | Decal |
| 4 | 120-4825 | 2 | Decal |

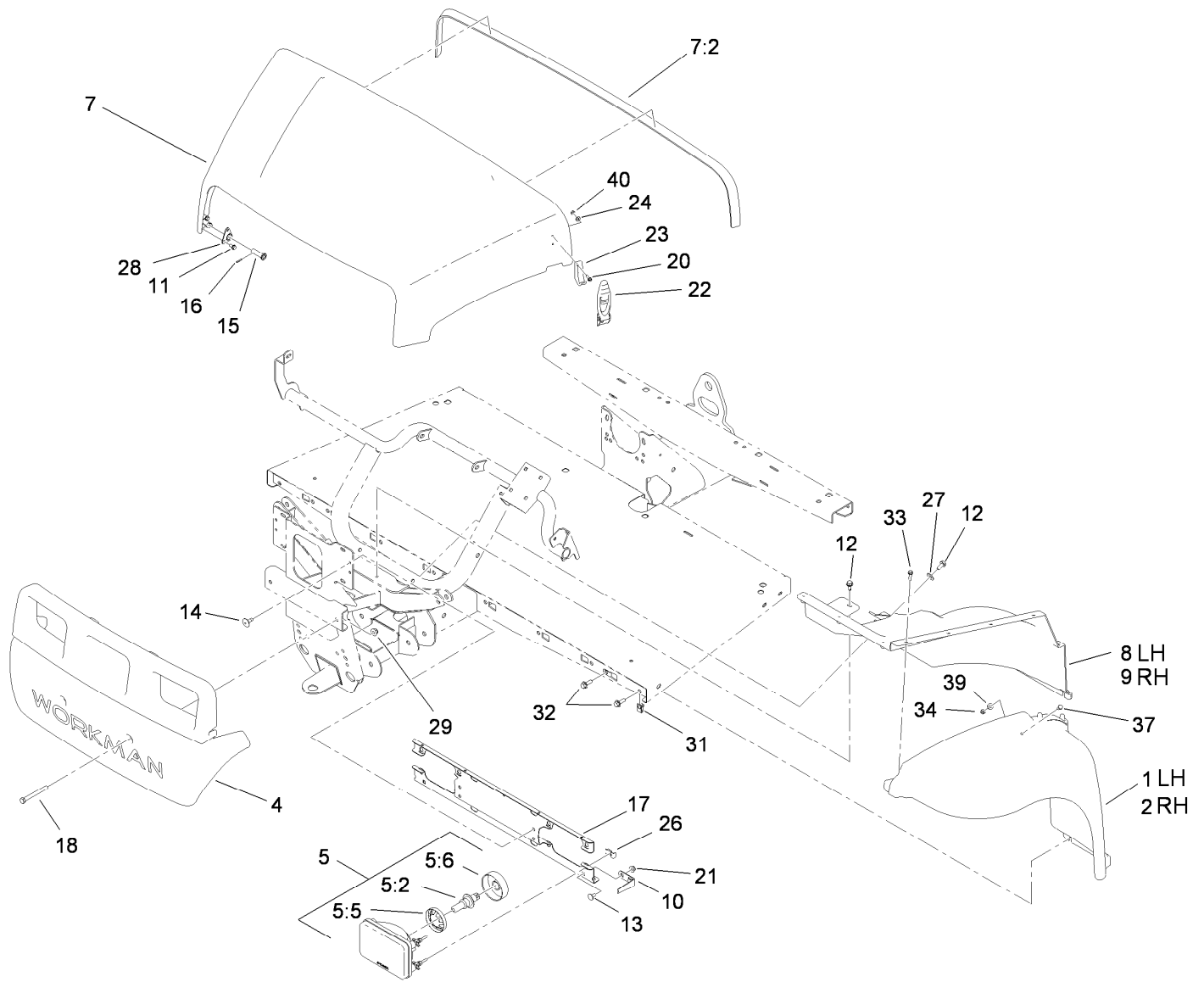
● Not serviced separately



Cargo Bed and Tailgate Assembly

| Ref. | Part Number | Qty. | Description |
|------|-------------|------|------------------------|
| 1 | | 1 | Cargo Bed W/ Strikes ● |
| 1:2 | 119-0838 | 2 | Mount-Striker |
| 1:3 | 119-0892 | 2 | Strike-Latch |
| 1:4 | 3234-47 | 4 | Screw-HHF |
| 1:5 | 32105-15 | 4 | Screw |
| 2 | | 1 | Tailgate ASM ● |
| 2:1 | 119-0839 | 1 | Tailgate Inner |
| 2:2 | 119-0840 | 1 | Tailgate Outer |
| 2:3 | 119-0891 | 1 | Handle-Latch |
| 2:4 | 119-0842 | 1 | Rod-Latch, RH |
| 2:5 | 119-0843 | 1 | Rod-Latch, LH |
| 2:6 | 98-1375 | 20 | Screw-HWH |
| 3 | 119-0849 | 2 | Retainer-Tailgate |
| 4 | 98-1375 | 4 | Screw-HWH |

● Not serviced separately



Hood and Fender Assembly

| Ref. | Part Number | Qty. | Description | Ref. | Part Number | Qty. | Description |
|------|-------------|------|--------------------|------|-------------|------|-------------------|
| 1 | 112-3371 | 1 | Fender-LH | 17 | 119-0841-03 | 1 | Bracket-Headlight |
| 2 | 112-3370 | 1 | Fender-RH | 18 | 115-7660 | 2 | Screw-HHF |
| 4 | 112-3365 | 1 | Bumper | 20 | 32105-13 | 4 | Screw-HWH |
| 5 | 115-7617 | 2 | Headlight ASM | 21 | 32128-20 | 2 | Nut-HF |
| 5:2 | 115-7618 | 1 | Bulb-24V | 22 | 115-2416 | 2 | Latch-Rubber |
| 5:5 | 115-7667 | 1 | Retainer-Headlight | 23 | 103-2897 | 2 | Latch-Catch |
| 5:6 | 115-7668 | 1 | Boot-Headlight | 24 | 3256-14 | 4 | Washer-Flat |
| 7 | 115-7636 | 1 | Hood ASM | 26 | 115-2408 | 6 | Clip-Speed |
| 7:2 | 115-7635 | 1 | Seal-Foam | 27 | 3256-71 | 2 | Washer-Flat |
| 8 | 112-3369 | 1 | Well-Fender, LH | 28 | 112-3308 | 2 | Retainer-Pin |
| 9 | 112-3368 | 1 | Well-Fender, RH | 29 | 104-8301 | 2 | Nut-Flange, NI |
| 10 | 112-3373 | 2 | Keeper-Pivot, Hood | 31 | 112-3306 | 10 | Nut |
| 11 | 46-8093 | 6 | Screw-Plastite | 32 | 3234-29 | 10 | Screw-HHF |
| 12 | 32104-32 | 4 | Screw-HWH | 33 | 46-8091 | 20 | Screw-HWH |
| 13 | 3230-18 | 2 | Screw-CARR | 34 | 3296-42 | 2 | Nut-Lock, NI |
| 14 | 146489 | 4 | Rivet | 37 | 321-39 | 2 | Screw-HH |
| 15 | 117-5094 | 2 | Pin-Clevis | 39 | 3256-22 | 2 | Washer-Flat |
| 16 | 32121-50 | 2 | Pin-Spring | 40 | 3296-2 | 4 | Nut-Lock, NI |

Attachments and Accessories

For 07299 Workman MDE Utility Vehicle

| Product Name | Model/Part |
|--|-------------------|
| Rear Lift Kit | 07261 |
| Roll-Over Protection System | 07276 |
| Receiver Hitch Kit | 07278 |
| 12V Power Plug Adapter Kit | 07318 |
| Canopy Kit | 07324 |
| Solid Windshield Kit | 07325 |
| Folding Windshield Kit | 07326 |
| Snow Plow | 07327 |
| Hard Cab | 07328 |
| Heavy-Duty Bumper Kit | 07329 |
| Heavy-Duty Brush Guard and Bumper Kit | 07338 |
| Sliding Window Door Kit | 07352 |
| Fixed Window Door Kit | 07353 |
| Electric Bed Lift Kit, 2011 and After Workman MDE Utility Vehicle..... | 07382 |
| Wheel-5 Bolt | 104-6889 |
| Tire-AT 489, 24x10.5-10 | 104-7061 |
| Tire-AT 489, 22x9.5-10 | 104-7062 |
| 20 foot Cordset Kit (DC)..... | 108-3071 |
| 48V Battery Charger | 115-7785 |
| Lift Wire Harness Kit | 115-7823 |
| Horn Kit..... | 115-7827 |
| Replacement Front Spring Kit..... | 117-4847 |
| Accessory Installation Kit, Espar Heater Kit for Workman MDE Utility Vehicle | 117-4968 |
| Potentiometer Kit | 117-5085 |
| Cord-AC (US/CANADA) | 119-0661 |
| Tire And Wheel Asm | 119-0751 |
| Side Mirror Kit | 119-9546 |
| Lanyard Kit, 2011 and After Workman MD Series Utility Vehicle..... | 119-9590 |
| Brake and Signal Light Kit, 2011 and After Workman MD Series Utility Vehicle..... | 119-9603 |
| Stake Pocket Adapter Kit, 2011 and After Workman MD Series Utility Vehicle..... | 119-9604 |
| Tie-Down Kit, 2011 and After Workman MD Series Utility Vehicle | 119-9605 |
| Bed Retrofit Kit, 2010 and Before Workman MD Series Utility Vehicle..... | 119-9606 |

Notes:

Notes:



Count on it.