



**Count on it.**

**Parts Catalog**

**H132 Rear-Engine Riding Mower**

Model No. 70186—Serial No. 311000001 and Up

# Ordering Replacement Parts

To order replacement parts, please supply the part number, the quantity, and the description of each part desired.

## Understanding Reference Numbers

Each identified part in an illustration has a reference number. The reference number for a part also appears in the parts list, along with other information about the part.

This catalog uses two special reference number formats, one to indicate parts in a service assembly and another to indicate the quantity of a given part in an illustration.

## Service Assembly Reference Numbers

Parts in service assemblies have reference numbers in the form a:b. The a represents the reference number of the entire service assembly and the b represents a sequential number unique to each part within the service assembly.

For example, a wheel assembly might be identified by reference number 6, the tire by 6:1, the valve by 6:2, and the wheel by 6:3. When you order the assembly identified by reference number 6, you receive all parts identified by reference numbers 6:1, 6:2, and 6:3. However, you may also order any part individually. Reference numbers of this type appear in illustration and in parts lists.

## Reference Numbers Indicating Quantity

In an illustration, if a reference number indicates more than one part, the reference number has the form nX y. The n represents the quantity of the part, the X is the multiplication symbol, and the y represents the reference number.

For example, in an illustration, the reference number 2X 37 means that two of the parts identified by reference number 37 are indicated.

# List of Abbreviations

**AR:** as required

**ASM:** assembly

**BBC:** blade brake control

**BHTF:** button head thread forming

**CARR:** carriage

**CCW:** counter clockwise

**CW:** clockwise

**DEG:** degrees

**DPA:** Dual Point Adjustment

**ECM:** electronic control module

**EXT:** external

**FH:** flat head

**GA:** gauge

**HD:** heavy-duty

**HF:** hex flange

**HH:** hex head

**HHF:** hex head flange

**HHFTF:** hex head flange thread forming

**HJ:** hex jam

**HLH:** hex lag head

**HOC:** height-of-cut

**HSBH:** hex socket button head

**HSFH:** hex socket flat head

**HSH:** hex socket head

**HWH:** hex washer head

**HWHTF:** hex washer head thread forming

**HYD:** hydraulic

**LH:** left hand

**LP:** Liquid Propane

**NI:** nylon insert

**NPTF:** national pipe thread fine

**PFH:** phillips flat head

**PPH:** phillips pan head

**PPHTF:** phillips pan head thread forming

**PRH:** phillips round head

**PTH:** phillips truss head

**PTO:** power-take-off

**RH:** right hand

**ROPS:** roll-over protection system

**RRB:** rear roller brush

**SFH:** slotted fillister head

**SHH:** slotted hex head

**SHWH:** slotted hex washer head

**SPH:** slotted pan head

**SQH:** square head

**SRH:** slotted round head

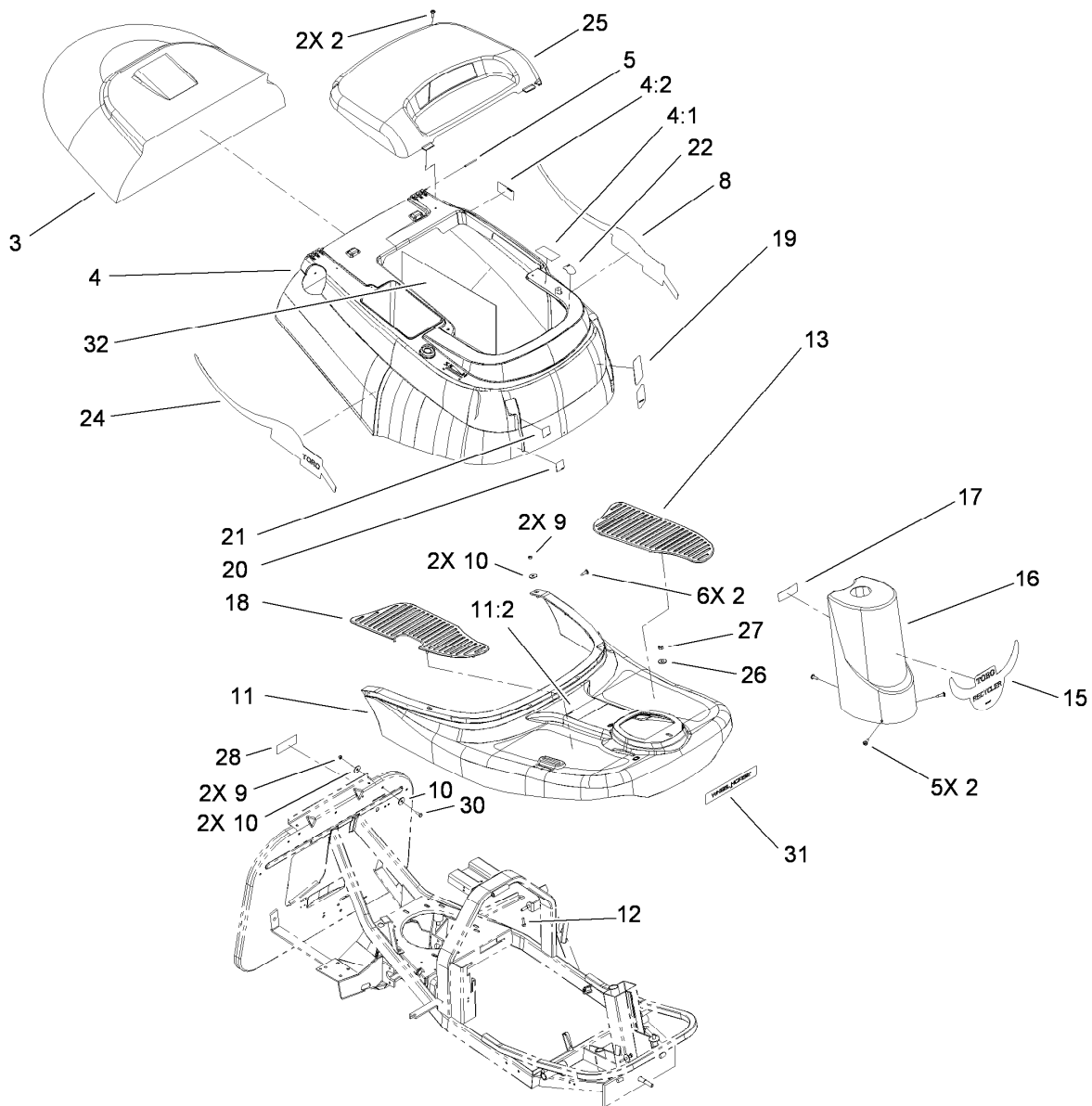
**STD:** standard

**TAP:** self tapping

**TTH:** torx truss head

# Contents

Body and Decal Assembly .....	4
Seat and Rear Bag Assembly .....	5
Front Axle and Steering Assembly .....	6
Deck and Spindle Assembly .....	8
Deck Suspension Assembly .....	10
Hydro Transaxle Assembly .....	11
Main Housing Transmission Assembly No. 114-3192 .....	12
Center Section Assembly Transmission No. 114-3192 .....	13
Shaft and Brake Assembly Transmission No. 114-3192 .....	14
Engine and Fuel Tank Assembly .....	15
Electrical Assembly .....	16
Attachments and Accessories .....	17

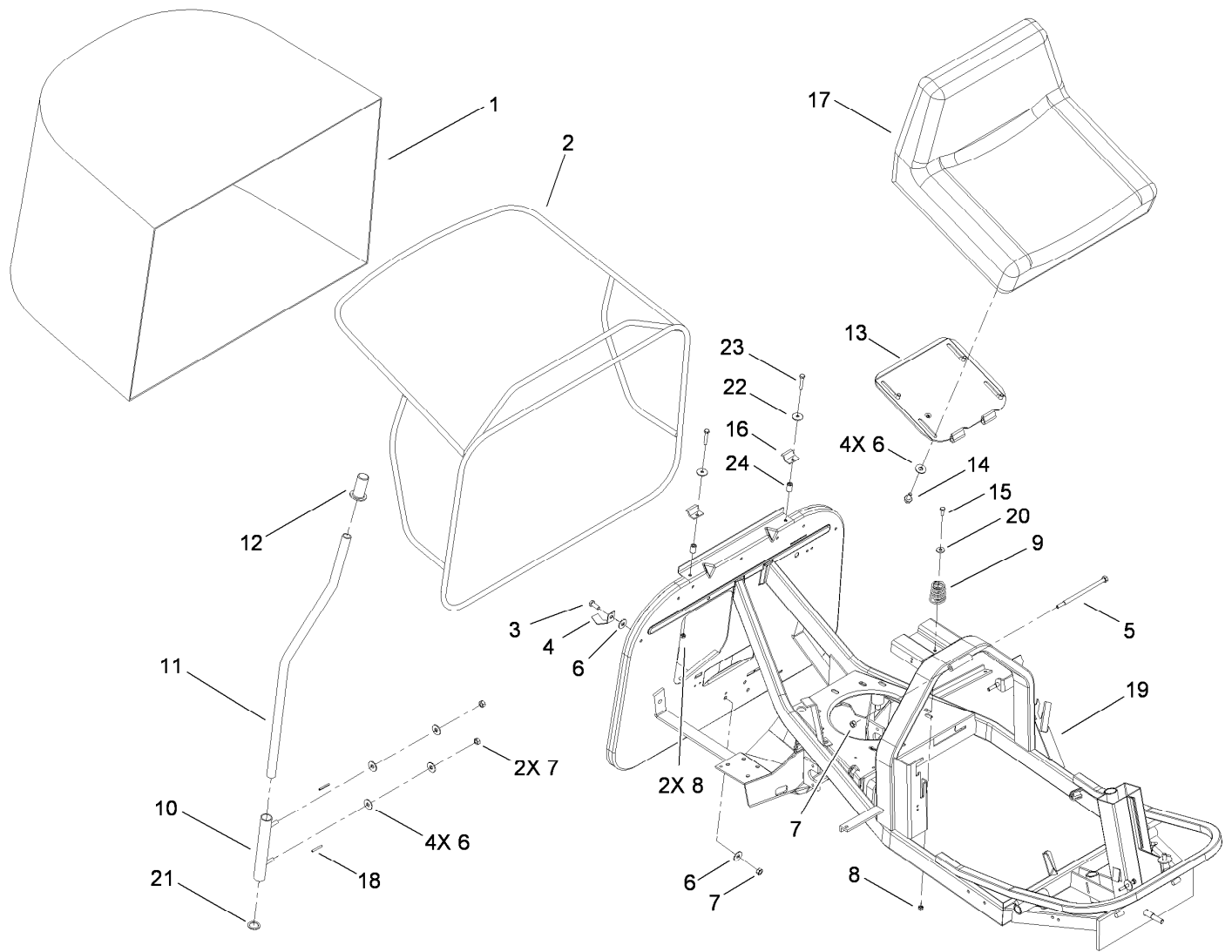


## Body and Decal Assembly

Ref.	Part Number	Qty.	Description	Ref.	Part Number	Qty.	Description
2	106-2851	13	Screw-HH, TAP	17		1	Decal-Run Lights ■
3	106-1810	1	Cover-Grass Bag	18	106-2972	1	Floormat-RH
4	106-2885	1	Shroud And Decal ASM	19		1	Decal-HOC ■
4:1		1	Decal-Danger ■	20		1	Decal-PTO, Disengage ■
4:2		1	Decal-Warning, Hot ■	21		1	Decal-PTO, Engage ■
5	106-2870	2	Pin-Dowel	22		1	Decal-Switch ■
8	107-8980	1	Decal	24	107-8981	1	Decal
9	33023-00	7	Nut-Lock	25	106-2860	1	Cover-Engine
10	106-2853	12	Washer-Flat	26	106-2854	1	Washer-Flat
11	106-2901	1	Foot Rest And Decal ASM	27	46-0330	1	Nut-Lock
11:2		1	Decal-Caution ■	28		1	Decal-Disengagement ■
12	33113-020	2	Screw-HH	30	33113-016	2	Screw-HH
13	106-2973	1	Floormat-LH	31	106-6525	1	Decal
15	106-6517	1	Decal-Front	32	119-2735	1	Insulation
16	106-2906	1	Steering-Turret	99	106-2887	1	Decal Kit ●

● Not illustrated

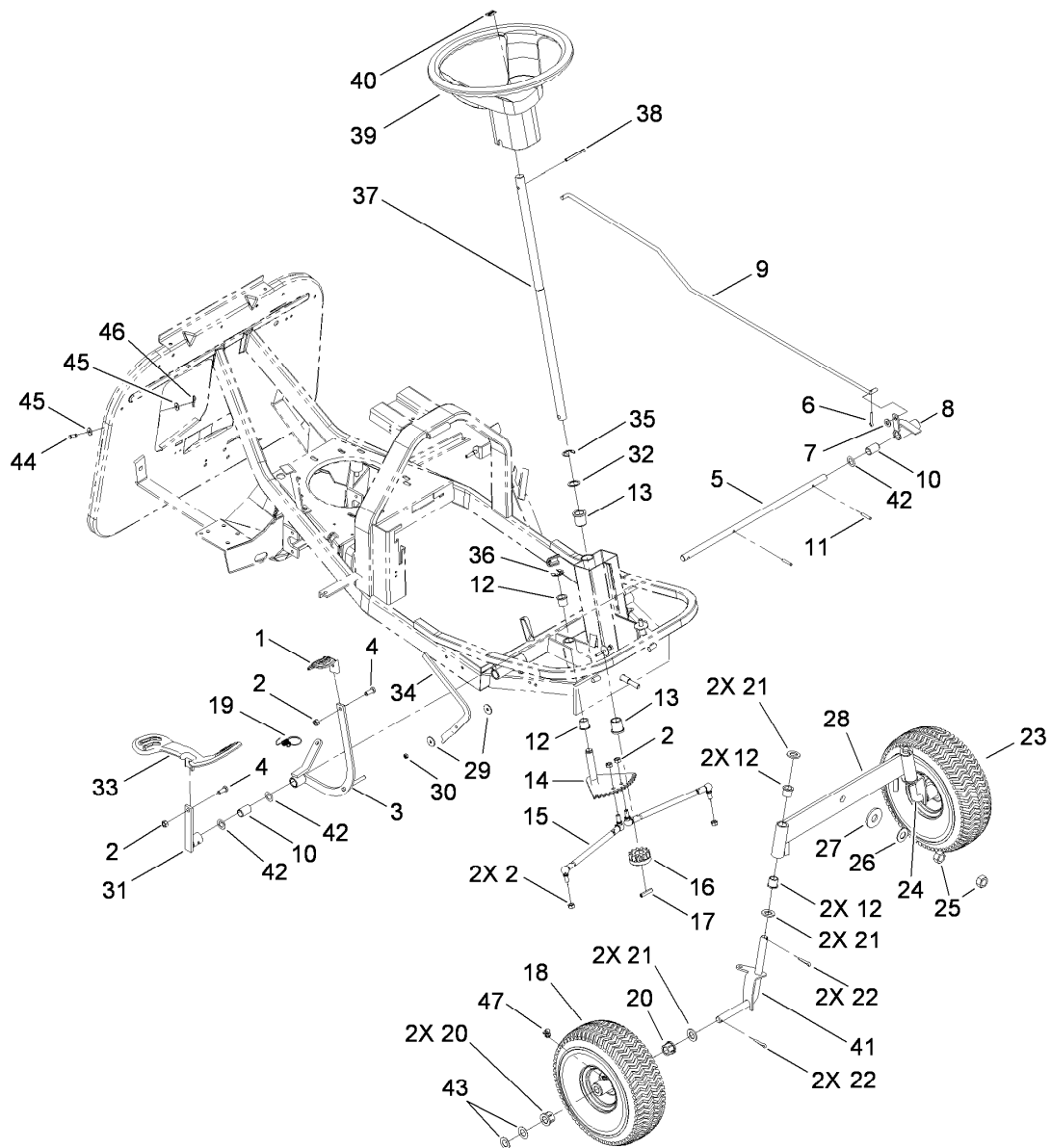
■ Not serviced separately



## Seat and Rear Bag Assembly

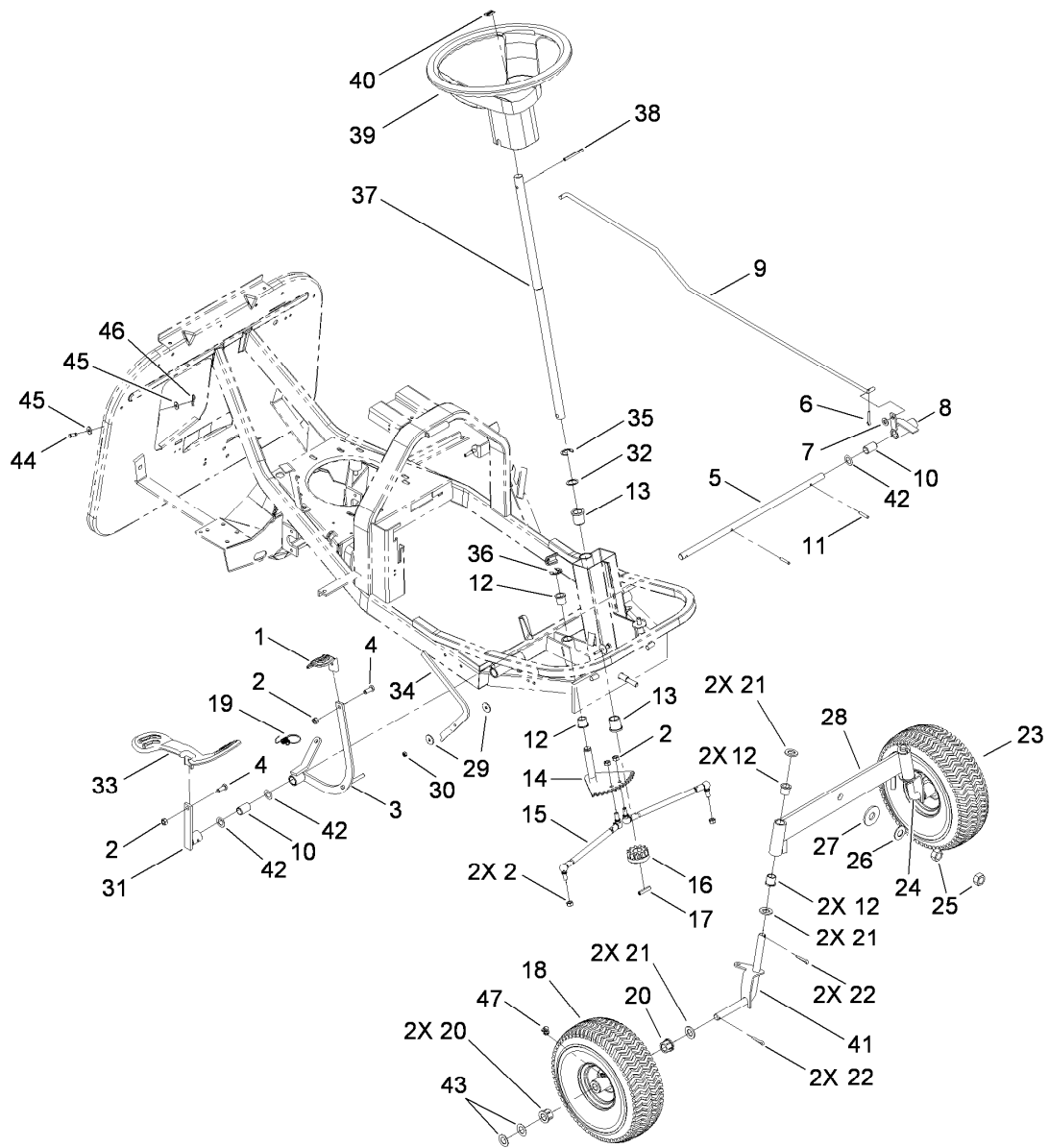
Ref.	Part Number	Qty.	Description
1	106-2867	1	Bag-Grass
2	114-3210	1	Frame-Collector
3	33114-020	1	Screw-HH
4	106-2969	1	Hook-Bag
5	106-1844	1	Screw-HH
6	106-2854	10	Washer-Flat
7	46-0330	4	Nut-Lock
8	33023-00	3	Nut-Lock
9	106-2945	1	Spring-Compression
10	106-2927	1	Support
11	106-2928	1	Lever
12	106-2903	1	Knob

Ref.	Part Number	Qty.	Description
13	106-2944	1	Plate-Seat
14	33104-016	4	Screw-HHF
15	33113-016	1	Screw-HH
16	106-2929	2	Clip
17	106-2857	1	Seat
18	106-2871	2	Pin-Spring
19	114-3187	1	Frame-Complete
20	106-2865	1	Washer-Flat
21	106-1807	1	Spacer
22	106-2853	2	Washer-Flat
23	33113-035	2	Screw-HH
24	114-3212	2	Spacer-Collector



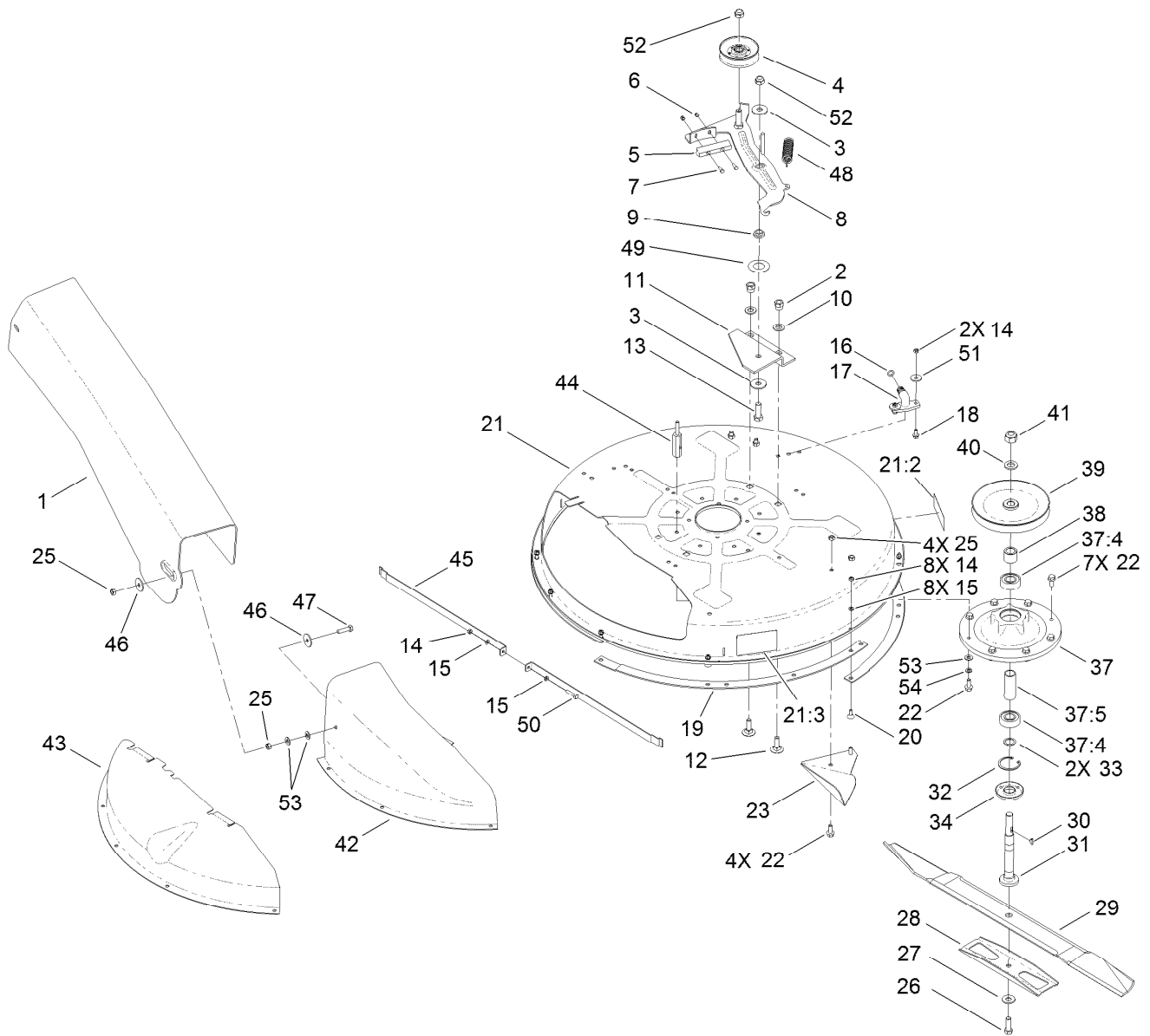
## Front Axle and Steering Assembly

Ref.	Part Number	Qty.	Description	Ref.	Part Number	Qty.	Description
1	106-2957	1	Pedal-Brake	22	3272-21	4	Pin-Cotter
2	46-0330	6	Nut-Lock	23	106-2907	2	Tire
3	114-3208	1	Lever-Brake	24	106-2953	1	Axle-Wheel, LH
4	33114-020	2	Screw-HH	25	33018-00	2	Nut-Hex
5	106-2959	1	Shaft	26	106-2926	1	Washer-Bell
6	3272-21	2	Pin-Cotter	27	106-2925	1	Washer-Flat
7	33094-00	2	Washer-Plain	28	106-2864	1	Axle-Front
8	114-3193	1	Bushing-Linkage	29	106-2853	2	Washer-Flat
9	114-3194	1	Rod-Linkage	30	33023-00	1	Nut-Lock
10	106-2962	2	Bushing	31	106-2923	1	Lever-Foot Pedal
11	106-2874	3	Pin-Dowel	32	106-1807	1	Spacer
12	106-1811	6	Bushing	33	106-2964	1	Pedal
13	106-2873	2	Bushing	34	106-2961	1	Lever
14	106-2868	1	Rack-Steering	35	106-2909	1	Ring-Retaining, EXT
15	106-2933	2	Rod-Tie	36	106-2908	1	Ring-Retaining, EXT
16	106-2878	1	Gear-Steering	37	106-2872	1	Shaft-Steering
17	106-1845	1	Pin-Spiral	38	106-1846	1	Pin-Roll
18	106-2951	2	Wheel	39	106-2883	1	Wheel-Steering
19	107-2236	1	Spring-Return, Brake	40	98-1459	1	Decal
20	106-6508	4	Bushing	41	106-2952	1	Axle-Wheel, RH
21	33098-00	6	Washer-Flat	42	106-1835	3	Spacer



## Front Axle and Steering Assembly (continued)

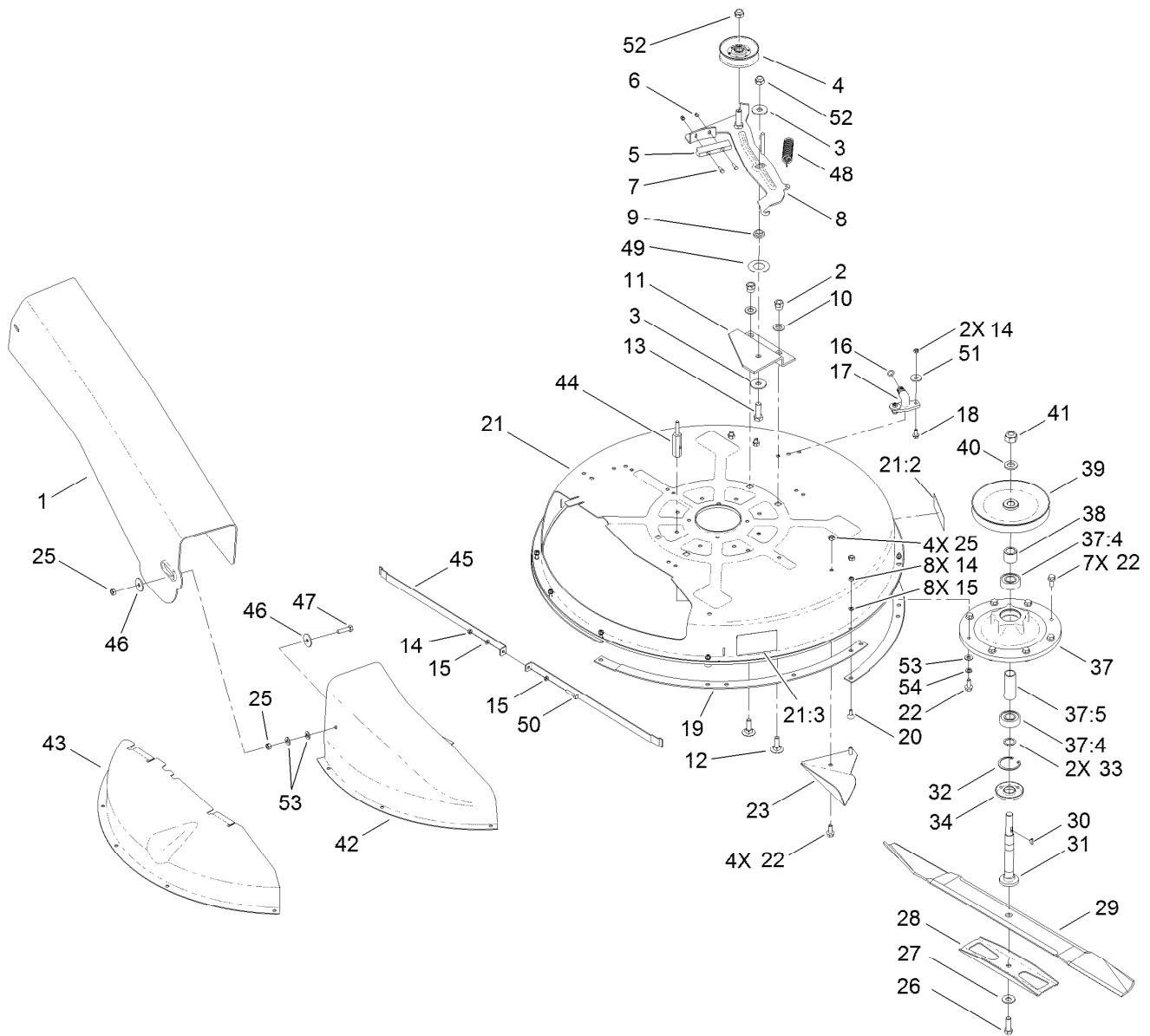
<i>Ref.</i>	<i>Part Number</i>	<i>Qty.</i>	<i>Description</i>	<i>Ref.</i>	<i>Part Number</i>	<i>Qty.</i>	<i>Description</i>
43	106-6544	4	Washer	46	106-2879	1	Pin-Hair
44	106-6543	1	Pin-Grooved	47	106-6546	2	Zerk-Grease, 90 DEG
45	106-2865	2	Washer-Flat				



## Deck and Spindle Assembly

Ref.	Part Number	Qty.	Description	Ref.	Part Number	Qty.	Description
1	106-2970	1	Tube-Discharge	20	106-6510	8	Screw-Sh
2	46-0090	2	Nut-Lock	21	106-6545	1	Deck ASM
3	106-2922	2	Washer-Flat	21:2		1	Decal-Caution ●
4	106-1813	1	Pulley-Idler	21:3		1	Decal-Cover, Discharge ●
5	106-1814	1	Brake-Rubber	22	33104-030	12	Screw-HHF
6	46-0410	2	Nut-Lock	23	80-2630	2	Kicker
7	60-6910	2	Screw	25	46-0330	6	Nut-Lock
8	114-3209	1	Brake ASM	26	3212-5	1	Screw-HH
9	106-2892	1	Bushing	27	106-2858	1	Washer-Bell
10	33096-00	2	Washer-Flat	28	80-4570	1	Stiffener
11	120-1179	1	Bracket-Deck	29	106-6547	1	Blade-Recycler
12	33126-035	2	Screw-CARR	30	106-1805	1	Key
13	33116-035	1	Screw-HH	31	106-2902	1	Shaft-Spindle
14	33023-00	11	Nut-Lock	32	106-2910	1	Ring-Snap
15	33093-00	10	Washer-Flat	33	106-1807	2	Spacer
16	106-1847	1	O-Ring	34	80-4370	1	Shield-Bearing
17	95-2747	1	Fitting-Washout	37	119-0368	1	Spindle Housing ASM
18	33103-016	2	Screw-HHF	37:4	251-297	2	Bearing-Ball
19	80-4490	4	Ring-Deck	37:5	83-7020	1	Spacer-Bearing

● Not serviced separately

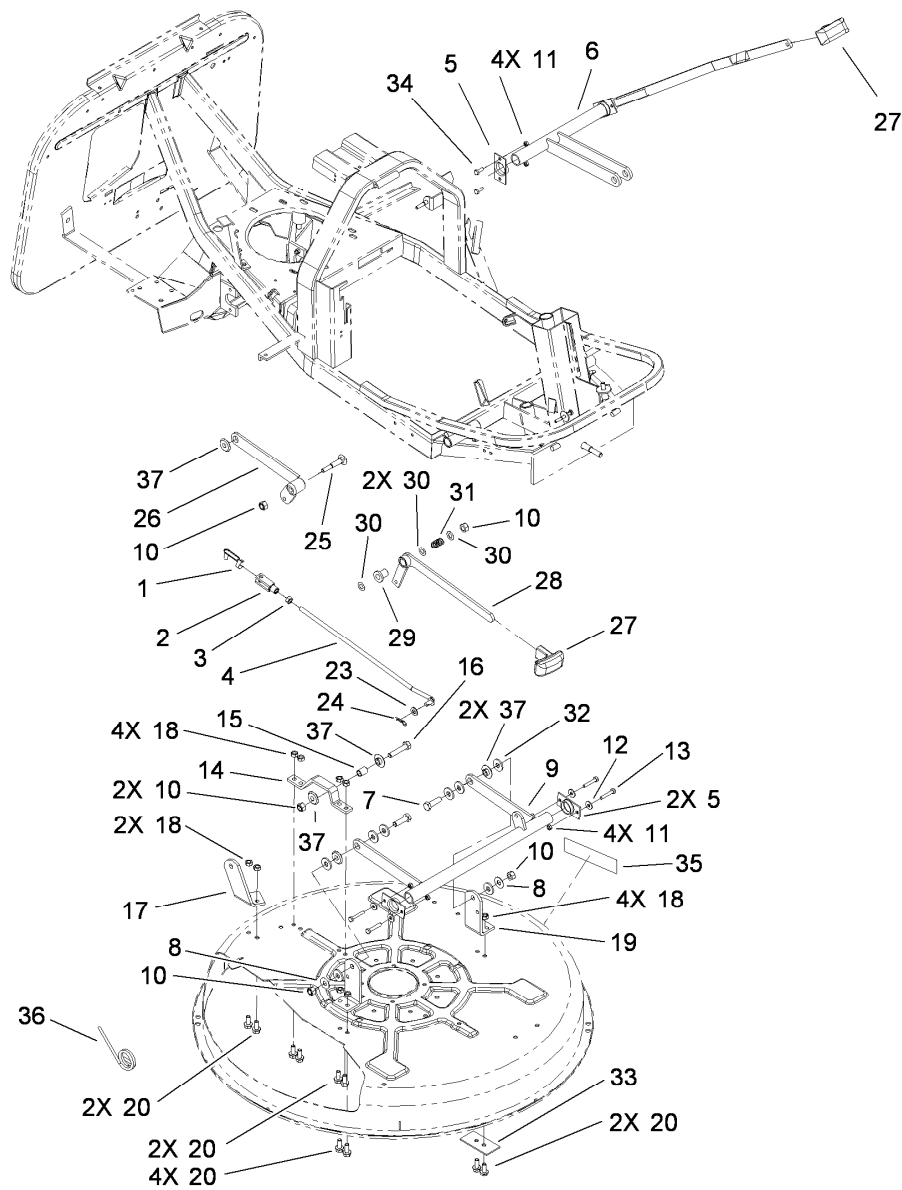


## Deck and Spindle Assembly (continued)

Ref.	Part Number	Qty.	Description
38	106-1842	1	Spacer
39	106-1812	1	Pulley
40	33098-00	1	Washer-Flat
41	106-2914	1	Nut-Hex
42	106-2898	1	Tunnel-Discharge
43	106-2899	1	Cover-Recycler
44	106-2897	1	Guide-Belt
45	106-6542	2	Strap-Deck
46	106-2855	2	Washer-Flat

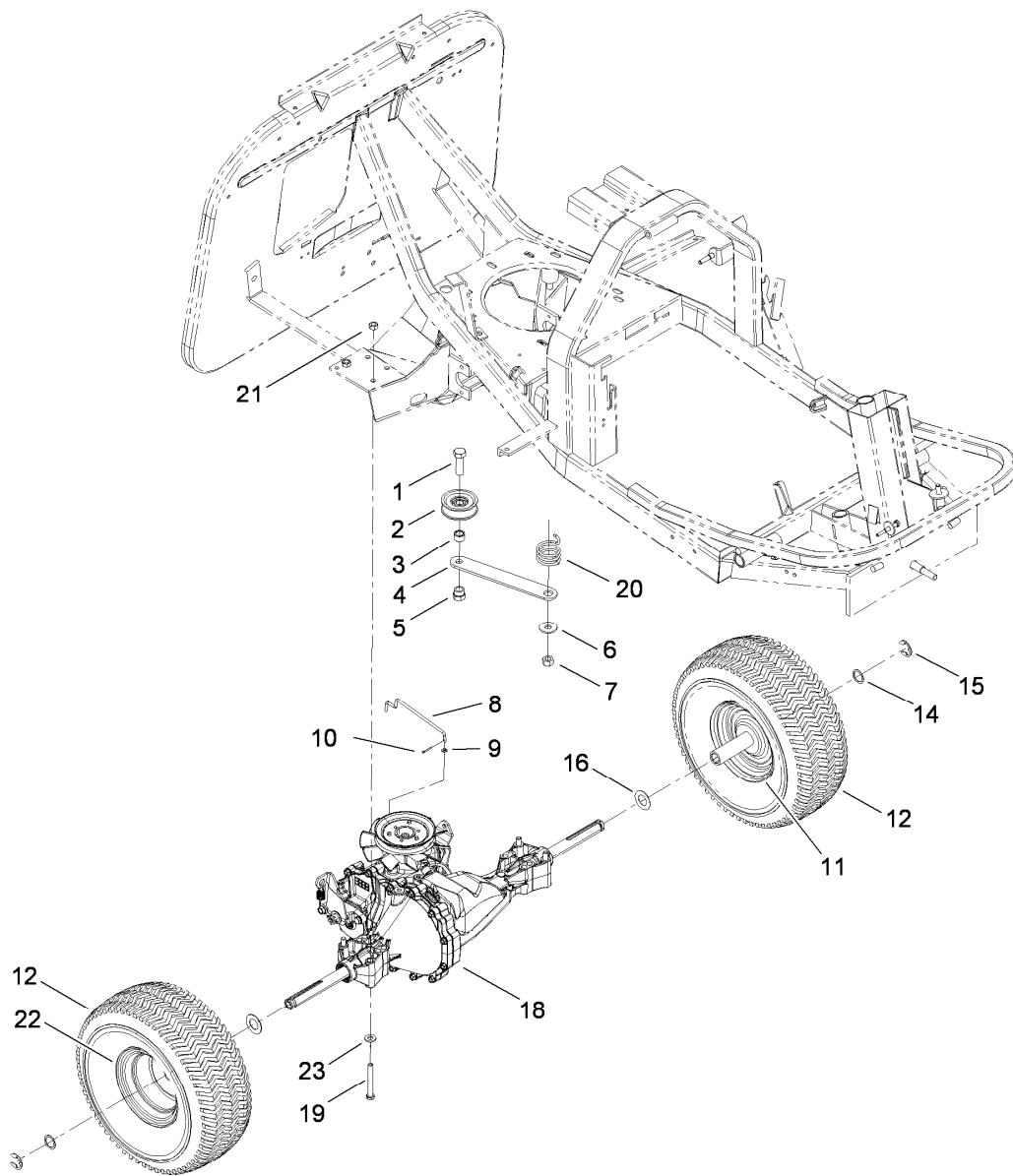
Ref.	Part Number	Qty.	Description
47	33114-030	1	Screw-HH
48	106-1838	1	Spring-Extension
49	106-2893	1	Spacer
50	33113-030	1	Screw-HH
51	106-2865	2	Washer-Flat
52	106-6513	2	Nut-Lock
53	33094-00	3	Washer-Plain
54	3253-4	1	Washer-Lock

● Not serviced separately



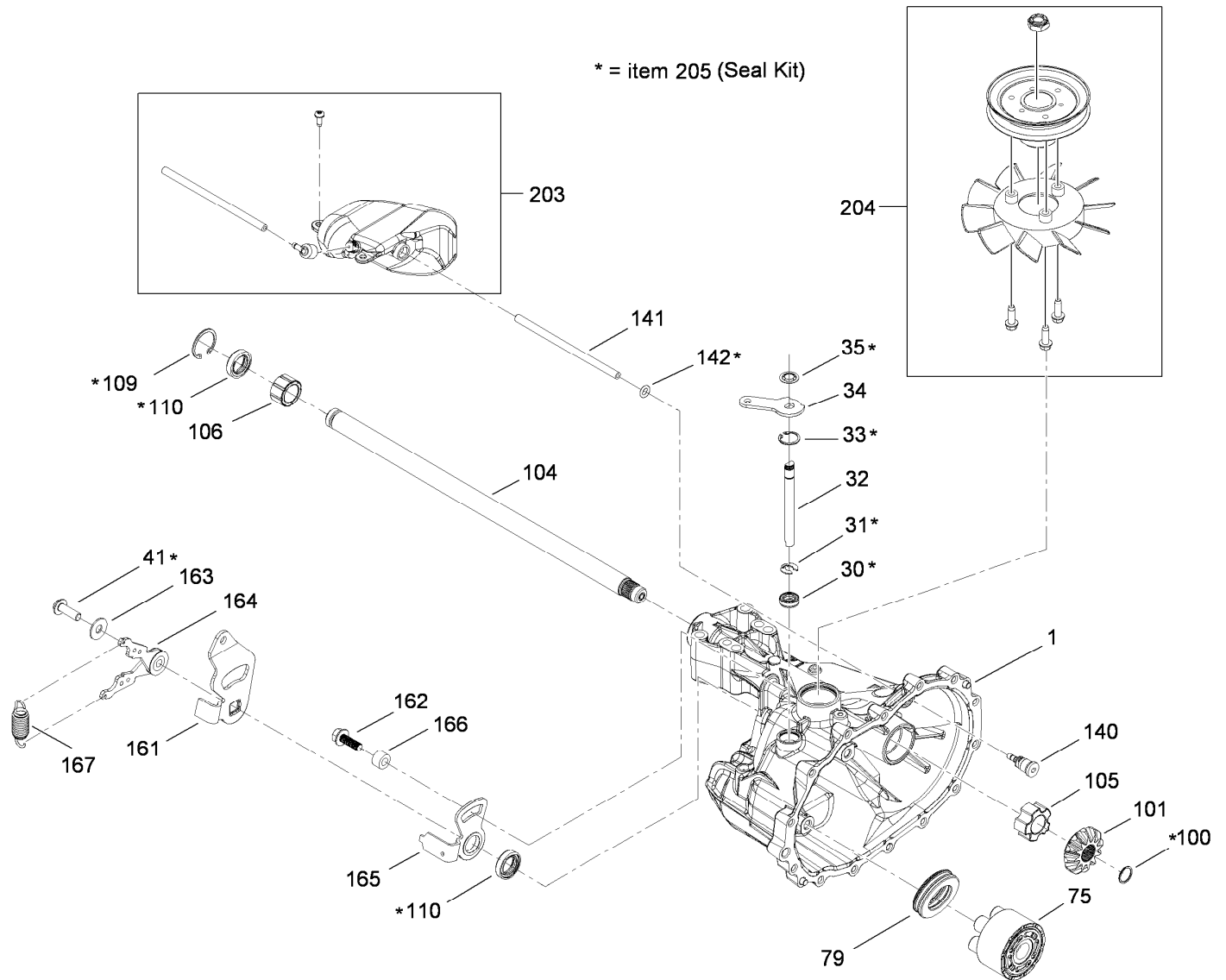
## Deck Suspension Assembly

Ref.	Part Number	Qty.	Description	Ref.	Part Number	Qty.	Description
1	106-1809	1	Retainer-Yoke	19	106-2896	2	Bracket-Deck
2	106-1803	1	Yoke	20	33104-020	10	Screw-HHF
3	33014-00	1	Nut-Hex	23	33094-00	1	Washer-Plain
4	106-2937	1	Rod-Tie	24	106-2879	1	Pin-Hair
5	106-2880	3	Bracket-Support	25	106-2882	1	Screw-CARR
6	114-3199	1	Lift Lever ASM	26	114-3198	1	Deck-Hanger, Support
7	33115-035	2	Screw-HH	27	106-2967	2	Handle
8	106-6511	2	Washer-Flat	28	106-2954	1	Lever-Blade, Clutch
9	114-3197	1	Deck Hanger ASM	29	106-2955	1	Bushing
10	33025-00	6	Nut-Lock, NI	30	106-2869	3	Shim
11	33023-00	8	Nut-Lock	31	106-2950	1	Spring-Compression
12	106-2865	4	Washer-Flat	32	106-1806	6	Washer
13	33113-035	4	Screw-HH	33	106-6512	1	Plate
14	106-2895	1	Bracket-Deck	34	33113-016	4	Screw-HH
15	106-2912	1	Bushing	35	106-6406	1	Decal-Recycler
16	33115-050	1	Screw-HH	36	107-2229	1	Spring-Lift, Deck
17	106-2894	1	Bracket-Deck	37	114-3203	5	Bushing-Linkage, Deck
18	46-0330	10	Nut-Lock				



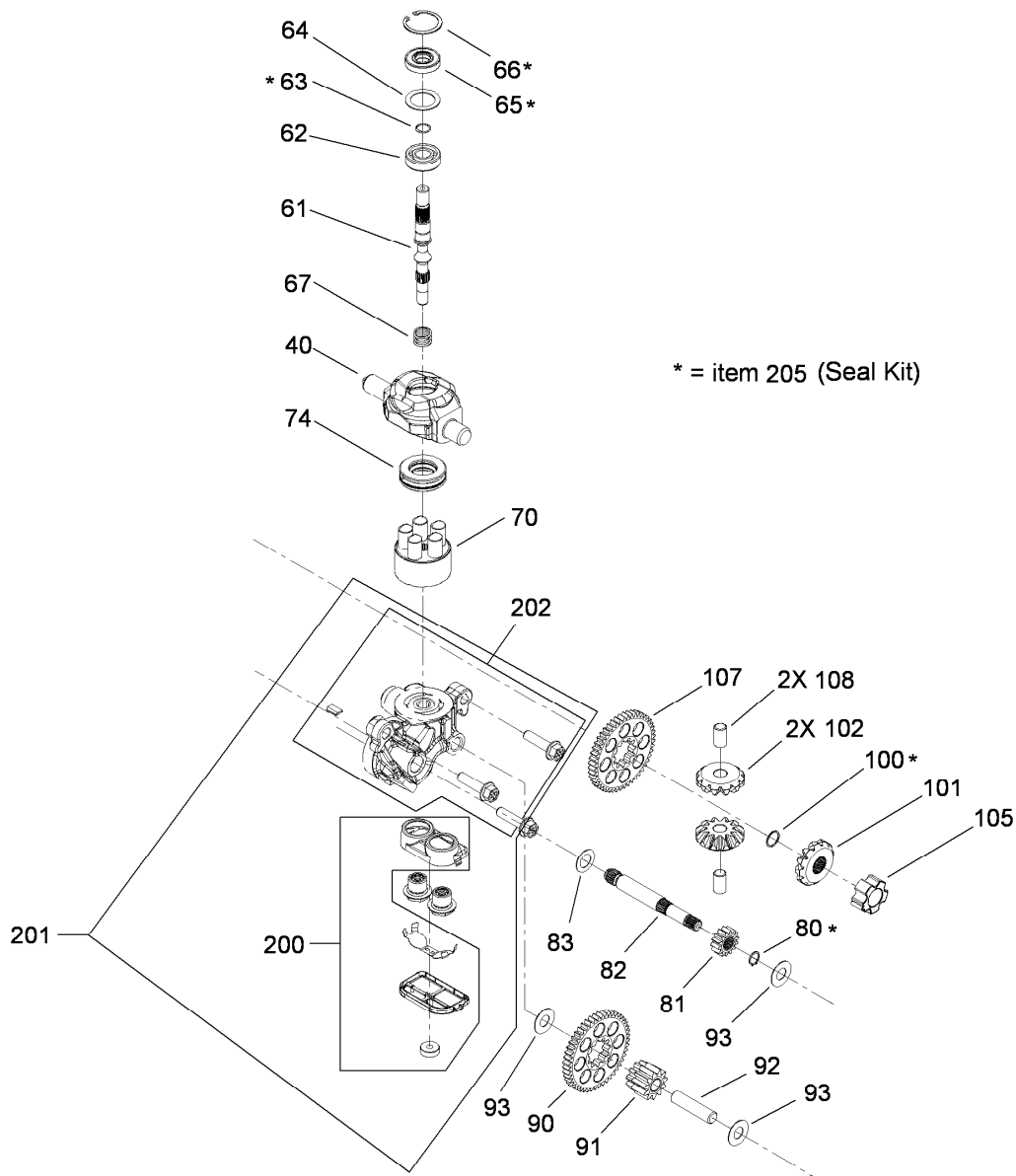
## Hydro Transaxle Assembly

<i>Ref.</i>	<i>Part Number</i>	<i>Qty.</i>	<i>Description</i>	<i>Ref.</i>	<i>Part Number</i>	<i>Qty.</i>	<i>Description</i>
1	33116-040	1	Screw-HH	12	106-2913	2	Tire
2	114-3206	1	Pulley	14	114-3202	2	Spacer-Outer
3	106-2984	1	Spacer-Idler	15	106-2909	2	Ring-Retaining, EXT
4	106-2934	1	Bracket	16	114-3190	2	Spacer-Inner
5	46-0090	1	Nut-Lock	18	114-3192	1	Transaxle ASM
6	106-2921	1	Washer-Flat	19	106-2891	4	Screw-HH
7	33025-00	1	Nut-Lock, NI	20	106-2995	1	Spring-Extension
8	114-3195	1	Lever-Release	21	46-0330	4	Nut-Lock
9	106-2904	1	Washer-Flat	22	114-3189	1	Wheel-Rear, Right
10	106-2996	1	Pin-Hair	23	33094-00	4	Washer-Plain
11	114-3188	1	Wheel-Rear, Left				



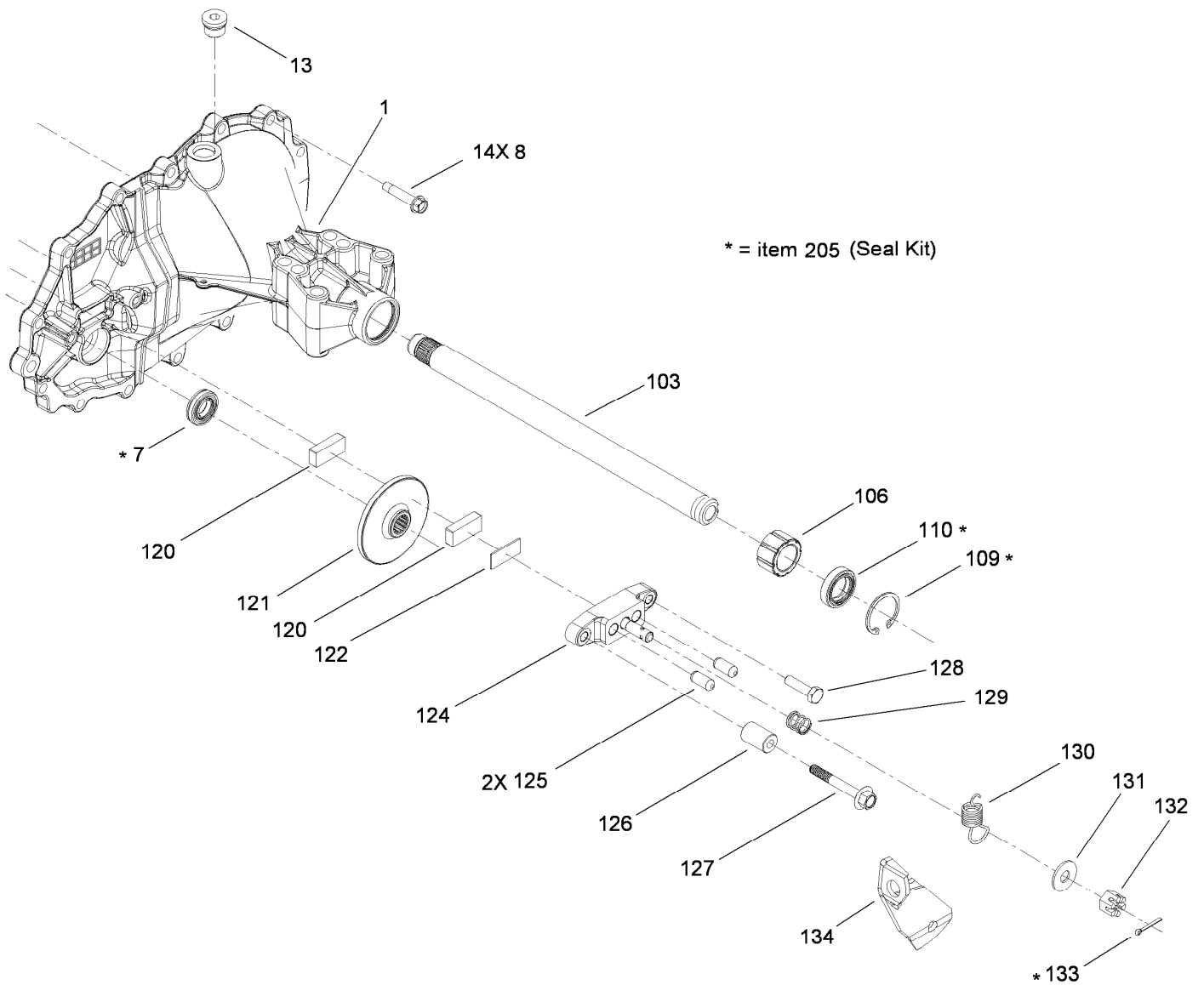
## Main Housing Transmission Assembly No. 114-3192

Ref.	Part Number	Qty.	Description	Ref.	Part Number	Qty.	Description
1	115-8313	1	Main Housing Kit	109	115-8303	1	Ring-Retaining, Int
30	106-8676	1	Seal-Lip	110	94-1924	2	Seal
31	106-8677	1	Ring-Retaining, EXT	140	104-5349	1	Fitting-Sae
32	115-8312	1	Rod-Bypass, Actuator	141	115-8302	1	Hose
33	106-8679	1	Ring-Retaining, Int	142	104-5361	1	O-Ring
34	115-8311	1	Arm-Bypass	161	115-8308	1	Arm-Control, Return
35	106-8681	1	Ring-Retaining, EXT	162	104-5312	1	Screw-HF
41	107-2488	1	Screw	163	114-8491	1	Washer
75	103-2666	1	Cylinder Block Kit	164	115-8306	1	Bi Directional Return Kit
79	94-6922	1	Bearing-Thrust	165	115-8310	1	Arm-Neutral
100	104-5328	1	Ring-Retaining, Spiral	166	115-8309	1	Bushing
101	115-8315	1	Gear-Bevel, 12T (Spline, Id)	167	115-8307	1	Spring-Extension
104	115-8305	1	Shaft-Axle, Keyed	203	115-8301	1	Expansion Tank Kit
105	115-8314	1	Bushing-Inboard	204	106-6524	1	Pulley Asm
106	115-8304	1	Bushing-Outboard	205	115-8316	1	Seal Kit



## Center Section Assembly Transmission No. 114-3192

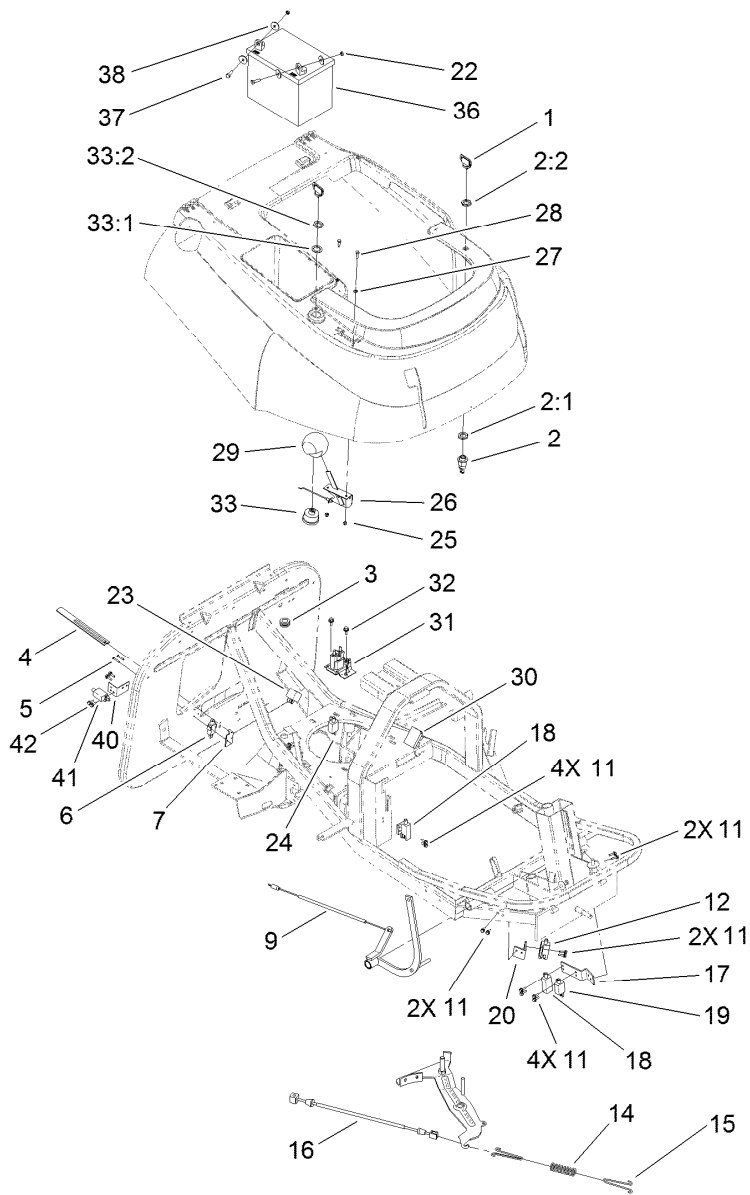
<i>Ref.</i>	<i>Part Number</i>	<i>Qty.</i>	<i>Description</i>	<i>Ref.</i>	<i>Part Number</i>	<i>Qty.</i>	<i>Description</i>
40	115-8319	1	Trunnion-Plate, Swash	90	115-8332	1	Gear-11T/48T
61	115-8317	1	Shaft-Input	91	115-8333	1	Gear-Jackshaft, 11T
62	94-1904	1	Bearing-Shaft, Ball	92	115-8334	1	Pin-Jackshaft
63	94-1902	1	Ring-Wire, Retaining	93	94-1933	3	Washer
64	104-2104	1	Spacer	100	104-5328	1	Ring-Retaining, Spiral
65	92-6543	1	Seal-Lip	101	115-8315	1	Gear-Bevel, 12T (Spline, Id)
66	94-1903	1	Ring-Retaining	102	115-8327	2	Gear-Bevel, 12T (.50 Id)
67	115-8318	1	Spring-Helical	105	115-8314	1	Bushing-Inboard
70	115-8321	1	Cylinder Block Kit	107	115-8325	1	Gear-53T, Bull
74	115-8320	1	Bearing-Thrust, Ball	108	115-8326	2	Pin-Differential
80	115-8331	1	Ring-Retaining, EXT	200	115-8323	1	Filter Kit
81	115-8330	1	Gear-Pinion, 13T	201	115-8324	1	Center Section W/Filter Kit
82	115-8329	1	Shaft-Motor	202	115-8322	1	Center Section Kit
83	115-8328	1	Washer	205	115-8316	1	Seal Kit



## Shaft and Brake Assembly Transmission No. 114-3192

<i>Ref.</i>	<i>Part Number</i>	<i>Qty.</i>	<i>Description</i>	<i>Ref.</i>	<i>Part Number</i>	<i>Qty.</i>	<i>Description</i>
1	115-8313	1	Main Housing Kit	125	104-2176	2	Pin-Brake
7	115-8335	1	Seal-Lip	126	104-2180	1	Spacer
8	104-5305	14	Screw-HHF	127	104-5345	1	Screw-HF
13	112-9850	1	Plug	128	115-8339	1	Screw-Hhcs
103	115-8336	1	Shaft-Axle, Keyed	129	104-2188	1	Spring-Brake, Anti Drag
106	115-8304	1	Bushing-Outboard	130	115-8340	1	Arm-Brake
109	115-8303	1	Ring-Retaining, Int	131	114-8491	1	Washer
110	94-1924	1	Seal	132	93-3807	1	Nut-Castle
120	104-2171	2	Puck-Brake	133	3272-7	1	Pin-Cotter
121	115-8337	1	Rotor-Brake	134	115-8338	1	Spring-Brake, Arm
122	104-2181	1	Puck-Plate	205	115-8316	1	Seal Kit
124	104-5343	1	Yoke-Brake				





## Electrical Assembly

Ref.	Part Number	Qty.	Description	Ref.	Part Number	Qty.	Description
1	63-8360	2	Key-Ignition	23	98-7249	1	Relay
2	46-5780	1	Starter Switch ASM	24	65-7410	1	Switch-Pole, Single
2:1	3254-5	1	Washer-Tooth, Internal	25	46-0410	2	Nut-Lock
2:2	218-461	1	Nut-HH	26	106-2916	1	Throttle Cable ASM
3	106-2863	1	Grommet	27	52-6430	2	Washer
4	106-1831	1	Lever-Bag Fill	28	60-6910	2	Screw
5	106-2850	2	Screw	29	106-2989	1	Knob
6	106-1843	1	Switch	30	99-3700	1	Module
7	106-1827	1	Clamp-Bag Fill	31	47-1910	1	Solenoid
9	114-3196	1	Cable-Brake	32	106-2852	2	Screw-HHF, TAP
11	106-1849	14	Screw-HH, TAP	33	88-9830	1	Key Switch ASM
12	100-8725	1	Switch-Double, Pole	33:1	3254-5	1	Washer-Tooth, Internal
14	106-2917	1	Spring-Compression	33:2	218-461	1	Nut-HH
15	106-2918	2	Hook-Spring	36	104-1755	1	Battery-155 Cca
16	106-2956	1	Cable	37	33113-020	2	Screw-HH
17	106-1808	1	Bracket-Switch	38	106-2853	4	Washer-Flat
18	86-4690	2	Switch-Interlock	39	114-3215	1	Harness-Wiring, Hydro ●
19	65-7410	1	Switch-Pole, Single	40	114-3211	1	Bracket-Collector, Switch
20	106-1816	1	Bracket-Switch	41	65-7410	1	Switch-Pole, Single
22	33013-00	2	Nut-Hex	42	106-1849	4	Screw-HH, TAP

● Not illustrated

# Attachments and Accessories

## For 70186 H132 Rear-Engine Riding Mower

<b>Product Name</b>	<b>Model/Part</b>
Blade-32in .....	105-0526
Hitch Bracket Kit .....	107-2206
Rear Discharge Deflector Kit .....	79472

**Notes:**

**Notes:**



**Count on it.**