



# Z Masters® with TURBO FORCE® Side Discharge Mowers

## Setup Instructions

### Loose Parts

Use the chart below to verify that all parts have been shipped.

Procedure	Description	Qty.	Use
<b>1</b>	No parts required	–	Unfold the crate.
<b>2</b>	No parts required	–	Check the tire pressure.
<b>3</b>	Bolt, (3/8 x 1 inch) Flange nut, (3/8 inch) Curved washer	8 8 8	Install the Roll Over Protection System (ROPS)
<b>4</b>	No parts required	–	Charge the battery.
<b>5</b>	No parts required	–	Check the engine oil level.
<b>6</b>	No parts required	–	Add fuel to the machine.
<b>7</b>	Number 2 general purpose lithium base or molybdenum base grease. (Purchase separately.)	1 tube	Check the machine for grease.
<b>8</b>	No parts required	–	Prepare the side discharge chute.
<b>9</b>	No parts required	–	Check the machine before delivery to the customer.
<b>10</b>	Operator's Manual Engine Owner's Manual Registration Card Operator training material Key	1 1 1 1 2	Delivering the machine to the customer.

# 1

## Unfolding the Crate

### No Parts Required

#### Procedure

Refer to the Packaging Crate Instructions included with the machine.

# 2

## Checking the Tire Pressure

### No Parts Required

#### Procedure

**Pressure:** 13 psi (90 kPa)

Check the air pressure in the tires.

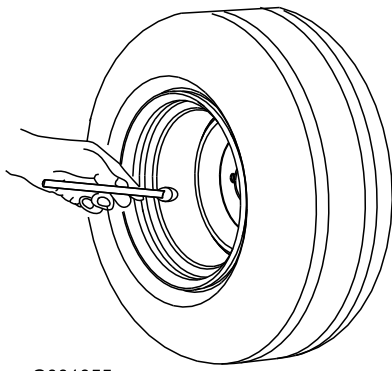


Figure 1

# 3

## Installing the Roll Over Protection System (ROPS)

### Parts needed for this procedure:

8	Bolt, (3/8 x 1 inch)
8	Flange nut, (3/8 inch)
8	Curved washer

### Procedure

The Roll Over Protection System (ROPS) is not installed in the correct position for shipping purposes.

1. Remove the hardware holding the ROPS to the machine and discard this hardware (Figure 2).

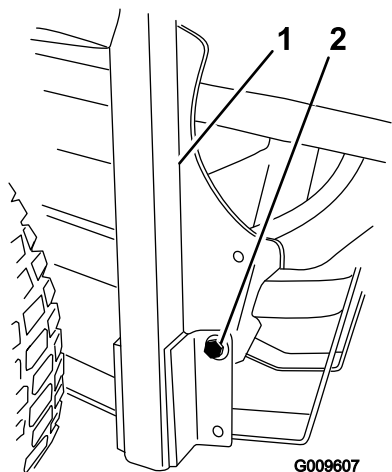


Figure 2

1. Roll Over Protection System (ROPS)
2. Remove this hardware and discard it

2. Install the ROPS to the frame on both sides with 8 bolts (3/8 x 1 inch), 8 curved washers, and 8 flange nuts (3/8 inch) (Figure 3).

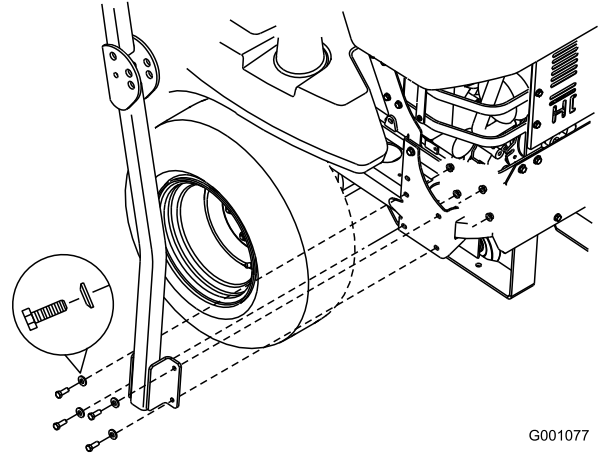


Figure 3

# 4

## Charging the Battery

### No Parts Required

### Procedure



Charging the battery produces gasses that can explode and cause serious injury.

- Keep cigarettes, sparks and flames away from the battery.
- Make sure the ignition switch is off.
- Ventilate when charging or using the battery in an enclosed space.

**Important:** Do not run the machine with the battery disconnected; electrical damage may occur to the engine.

Charge the battery. Refer to the *Operator's Manual* for instructions.

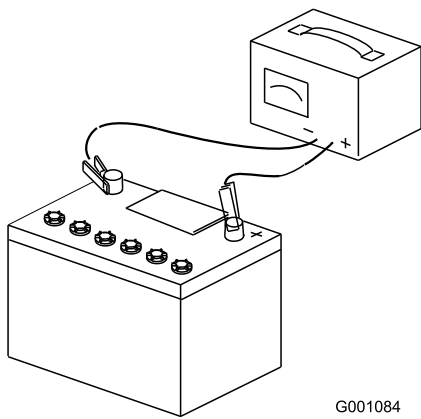


Figure 4

G001084

5

## Checking the Engine Oil Level

### No Parts Required

#### Procedure

Before you start the engine and use the machine, check the oil level in the engine crankcase; refer to Servicing the Engine Oil Level in *Operator's Manual*.

6

## Adding Fuel to the Machine

### No Parts Required

#### Procedure

Add gasoline to the machine before starting it. Refer to your *Operator's Manual* for the correct fuel and procedure.

7

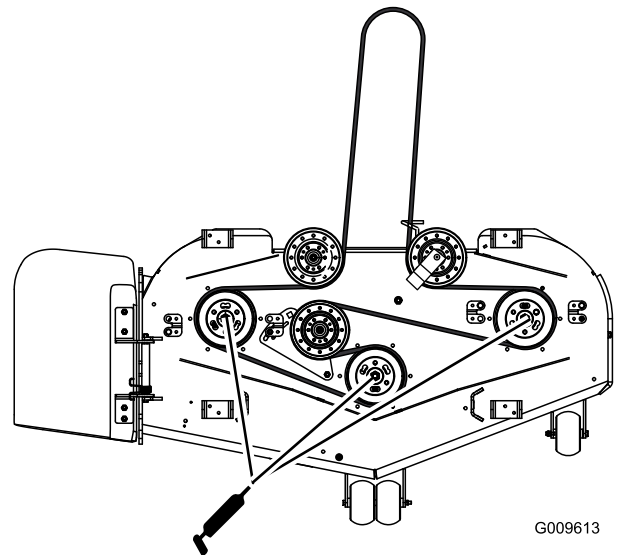
## Checking the Machine for Grease

### Parts needed for this procedure:

1 tube	Number 2 general purpose lithium base or molybdenum base grease. (Purchase separately.)
--------	---

#### Procedure

Check the grease for the three spindle bearings. If needed, add grease until it comes out of the lower seals.



G009613

Figure 5

8

## Checking the Side Discharge Chute

### No Parts Required

#### Procedure

If there are plastic ties holding the side discharge chute up, remove them and lower the chute into place.

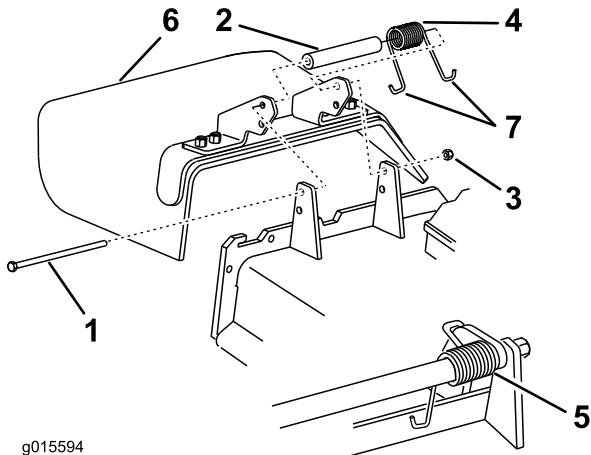


An uncovered discharge opening could allow the lawn mower to throw objects in the operator's or bystander's direction and result in serious injury or death. Also, contact with the blade could occur.

Never operate the lawn mower with the grass deflector removed unless you install a cover plate, a mulch plate, or a grass chute and catcher.

1. Make sure one **J** end of the spring is installed behind the deck edge before installing the bolt as shown in Figure 6.
2. Place one **J** hook end of the spring around the grass deflector (Figure 6).

**Important:** The grass deflector must be free to rotate with downward tension. Lift the deflector up to the full open position and ensure that it rotates freely, without binding into the full down position.



**Figure 6**

- |            |   |
|------------|---|
| 1. Bolt    | 5. Spring installed (around the grass deflector and behind the deck edge) |
| 2. Spacer  | 6. Grass Deflector  |
| 3. Locknut | 7. J hook end of spring   |
| 4. Spring  |   |

# 9

## Checking the Machine Before Delivery to the Customer

### No Parts Required

### Procedure

Before delivering the machine to the customer, ensure that you perform or have performed the procedures listed in the following table and initial each when finished. Refer to the *Operator's Manual* for instructions on performing these procedures.

Initial	Check Procedure
	Check the tire pressure.
	Check the level of the mower.
	Check that all mower spindles are greased.
	Check the engine oil level.
	Check the hydraulic fluid level.
	Check ROPS is secure.
	On liquid cooled machines, check the level of the coolant in the radiator and overflow bottle.
	Check the adjustment of the parking brake.
	Ensure that the machine tracks correctly; refer to the <i>Operator's Manual</i> for the adjustment procedure.
	Check the safety interlock system; refer to the <i>Operator's Manual</i> .
	Ensure that the PTO works.
	Check all fasteners you installed to ensure that they are tight.

When you finish setting up the machine, sign and date in the space provided below:

**Signature:** \_\_\_\_\_ **Date:** \_\_\_\_\_

# 10

## Delivering the Machine to the Customer

### Parts needed for this procedure:

1	<i>Operator's Manual</i>
1	<i>Engine Owner's Manual</i>
1	Registration Card
1	Operator training material
2	Key

### Procedure

At delivery, Fill in the model and serial number and complete the items listed in the following table and initial each when finished.

Model No. \_\_\_\_\_ Serial No. \_\_\_\_\_

Dealer Initial	Customer Initial	Check Procedure
		Show the customer where the following features are located and how they function:
		• Fuel tank caps
		• Oil fill cap/Oil dipstick
		• Spark plug(s)
		• Engine oil filter
		• Engine oil drain
		• Fuel filters
		• Air filter
		• Radiator coolant (if applicable)
		• Hydraulic fluid reservoir
		• Hydraulic filter
		• Choke (if applicable)
		• Battery
		• Ignition switch
		• Throttle lever
		• Power take off switch (PTO)
		• Motion control levers
		• Parking brake
		• Mower height-of-cut
		• Lift assist lever (if applicable)
		• Z Stand® (if applicable)
		• Adjustable seat
		• Hydraulic bypass valves
		• Rollover Protection System (ROPS)
		• Mower deck flow baffle
		Refer to the <i>Operator's Manual</i> to point out safety procedures, operation, and maintenance procedures.
		Review the warranty statement as shown in the <i>Operator's Manual</i> .
		Describe the post sale service procedures for your store.
		Assist the customer in filling out and mailing the registration card or register online at <a href="http://www.Toro.com">www.Toro.com</a>
		Make sure that the customer receives the <i>Operator's Manual</i> , <i>Engine Owner's Manual</i> , <i>Set Up Instructions</i> , and operator training material.
		Make sure the customer knows the <i>Parts Catalog</i> is available at <a href="http://www.Toro.com">www.Toro.com</a> .
		Assist the customer in loading the mower.

**Note:** When you, the dealer representative, have finished delivering the machine to the customer, sign and date in the space provide below and keep a copy of this page for dealer records.

**Signature:** \_\_\_\_\_ **Date:** \_\_\_\_\_

**Signature:** \_\_\_\_\_ **Date:** \_\_\_\_\_



**Count on it.**