



**Count on it.**

**Parts Catalog**

**Aerator 686**

Model No. 44850—Serial No. 220000001 and Up

# Ordering Replacement Parts

To order replacement parts, please supply the part number, the quantity, and the description of each part desired.

## Understanding Reference Numbers

Each identified part in an illustration has a reference number. The reference number for a part also appears in the parts list, along with other information about the part.

This catalog uses two special reference number formats, one to indicate parts in a service assembly and another to indicate the quantity of a given part in an illustration.

## Service Assembly Reference Numbers

Parts in service assemblies have reference numbers in the form a:b. The a represents the reference number of the entire service assembly and the b represents a sequential number unique to each part within the service assembly.

For example, a wheel assembly might be identified by reference number 6, the tire by 6:1, the valve by 6:2, and the wheel by 6:3. When you order the assembly identified by reference number 6, you receive all parts identified by reference numbers 6:1, 6:2, and 6:3. However, you may also order any part individually. Reference numbers of this type appear in illustration and in parts lists.

## Reference Numbers Indicating Quantity

In an illustration, if a reference number indicates more than one part, the reference number has the form nX y. The n represents the quantity of the part, the X is the multiplication symbol, and the y represents the reference number.

For example, in an illustration, the reference number 2X 37 means that two of the parts identified by reference number 37 are indicated.

# List of Abbreviations

**AR:** as required

**ASM:** assembly

**BBC:** blade brake control

**BHTF:** button head thread forming

**CARR:** carriage

**CCW:** counter clockwise

**CW:** clockwise

**DEG:** degrees

**DPA:** Dual Point Adjustment

**ECM:** electronic control module

**EXT:** external

**FH:** flat head

**GA:** gauge

**HD:** heavy-duty

**HF:** hex flange

**HH:** hex head

**HHF:** hex head flange

**HHFTF:** hex head flange thread forming

**HJ:** hex jam

**HLH:** hex lag head

**HOC:** height-of-cut

**HSBH:** hex socket button head

**HSFH:** hex socket flat head

**HSH:** hex socket head

**HWH:** hex washer head

**HWTF:** hex washer head thread forming

**HYD:** hydraulic

**LH:** left hand

**LP:** Liquid Propane

**NI:** nylon insert

**NPTF:** national pipe thread fine

**PFH:** phillips flat head

**PPH:** phillips pan head

**PPHTF:** phillips pan head thread forming

**PRH:** phillips round head

**PTH:** phillips truss head

**PTO:** power-take-off

**RH:** right hand

**ROPS:** roll-over protection system

**RRB:** rear roller brush

**SFH:** slotted fillister head

**SHH:** slotted hex head

**SHWH:** slotted hex washer head

**SPH:** slotted pan head

**SQH:** square head

**SRH:** slotted round head

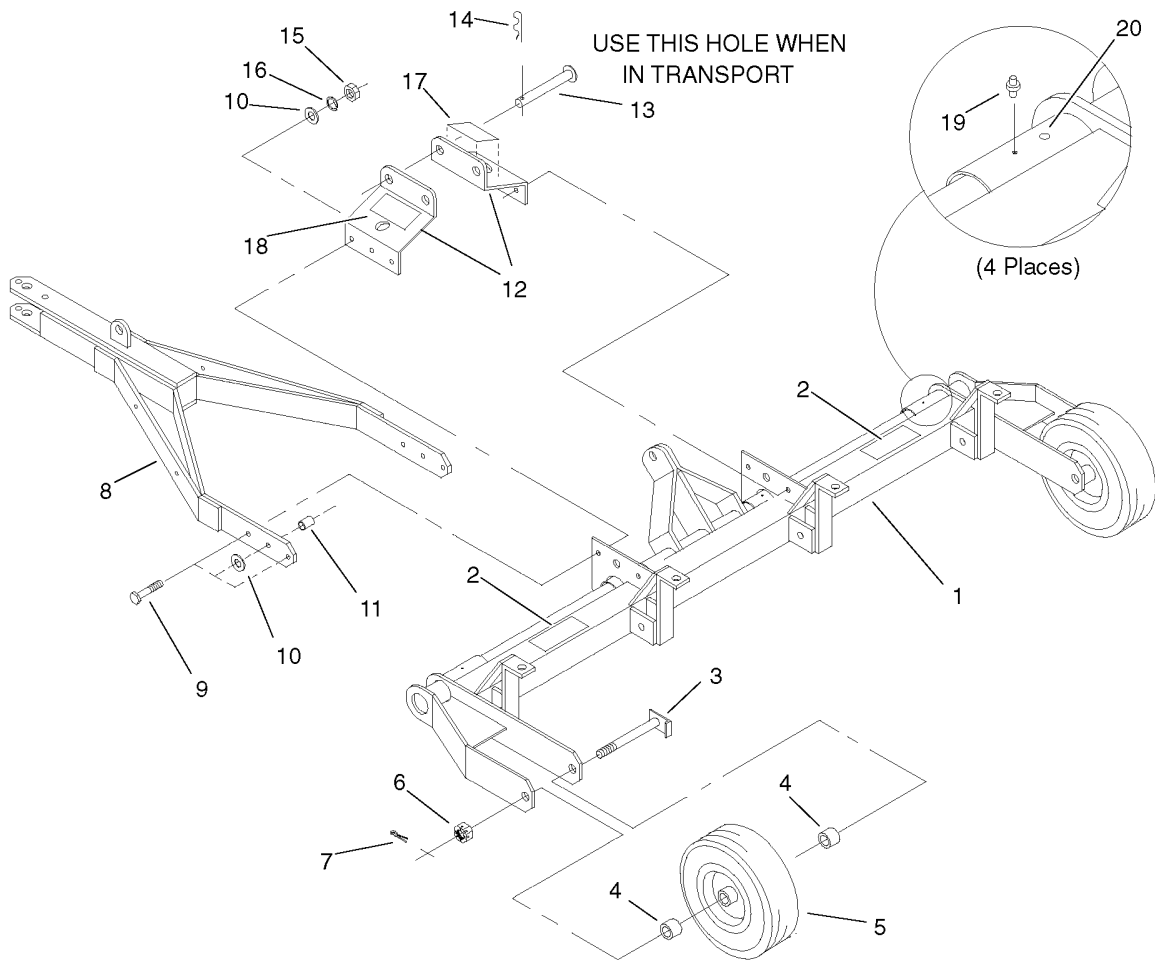
**STD:** standard

**TAP:** self tapping

**TTH:** torx truss head

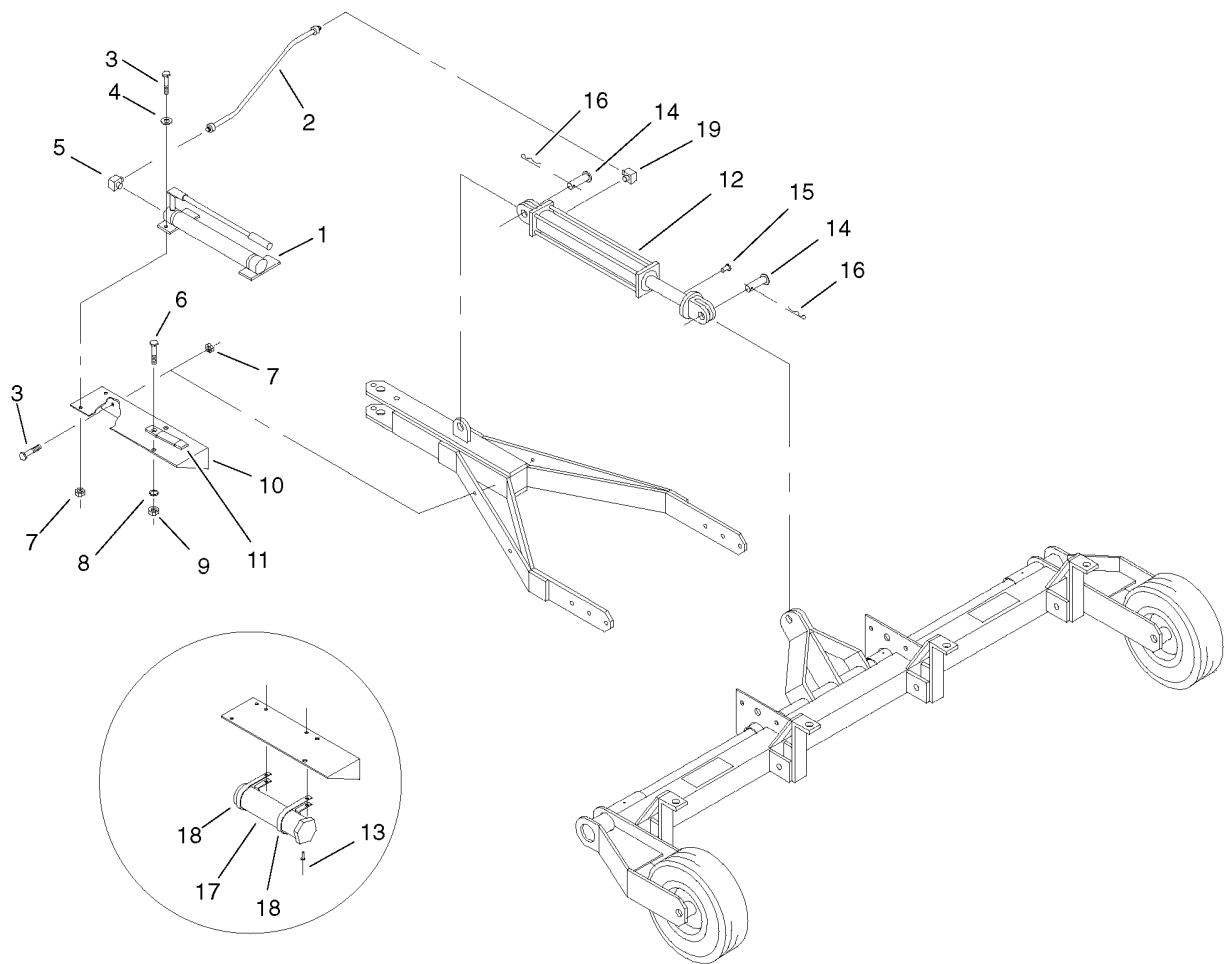
# Contents

- Frame and Tongue Assembly ..... 4
- Hand Pump and Cylinder Assembly ..... 5
- Main Arm Assembly ..... 6
- Jack and Guard Assembly (Optional) ..... 7
- Weight Kit (Optional) ..... 8
- Tine and Blade Assembly ..... 9



## Frame and Tongue Assembly

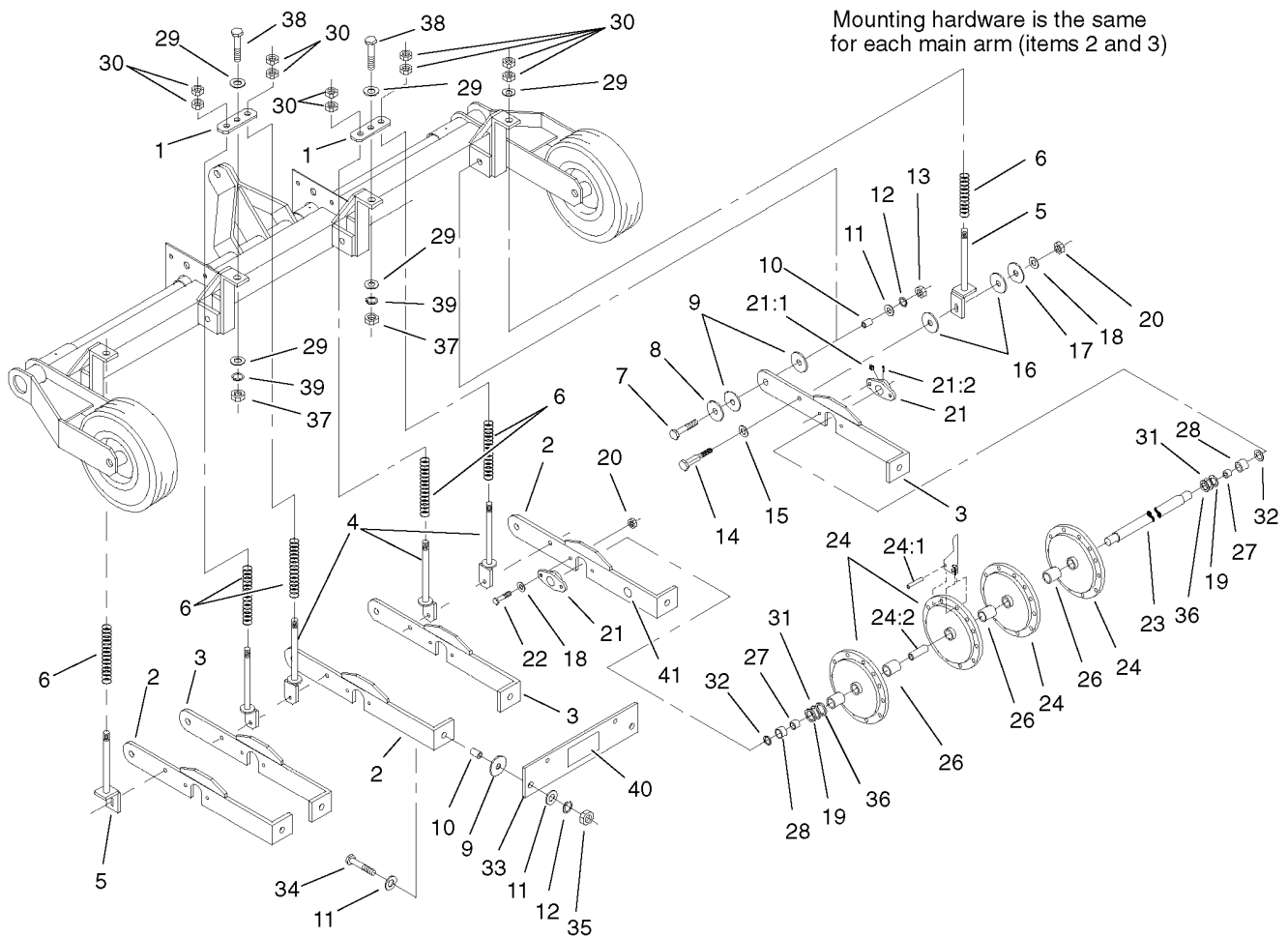
Ref.	Part Number	Qty.	Description
1	68-605-3053	1	Frame-Main
2	01-506-0680	2	Decal-Aerator 686
3	68-605-3701	2	Shaft-Axle
4	68-604-3321	4	Spacer-Wheel
5	01-269-0230	2	Tire & Wheel
6	01-190-1614	2	Nut-Slotted
7	3272-23	2	Pin-Cotter
8	68-605-3102	1	Tongue
9	325-10	6	Screw-HH
10	3256-6	8	Washer-Flat
11	68-604-3501	2	Spacer-Hitch
12	68-604-3532	2	Bar-Lock, Transport
13	01-252-0060	1	Pin-Hitch
14	01-159-0060	1	Pin-Hair
15	3217-9	6	Nut-HH
16	3253-7	6	Washer-Lock
17	67-1300	1	Decal
18	01-506-0340	1	Decal-Blades, Rotating
19	01-215-0050	4	Zerk
20	58-6520	6	Decal-Grease



## Hand Pump and Cylinder Assembly

Ref.	Part Number	Qty.	Description
1	01-305-0040	1	Pump-Hand
2	01-312-0500	1	Hose-HYD
3	323-7	4	Screw-HH
4	3256-4	2	Washer-Flat
5	01-201-0190	1	Fitting-HYD
6	325-5	1	Screw-HH
7	3296-39	4	Nut-Lock, NI
8	3253-7	1	Washer-Lock
9	3217-9	1	Nut-HH
10	68-605-3081	1	Mount-Pump
11	68-604-3511	1	Strap-Vibration, Pump
12:1	100-9961	1	Kit-Seal ●
13	01-161-0020	2	Rivet-Pop
14	01-252-0150	2	Pin-Clevis
15	100-9962	1	Fitting-Vent
16	01-159-0010	2	Pin
17	74-0720	1	Tube-Manual
18	2412-133	2	R-Clamp
19	340-134	1	Elbow-90

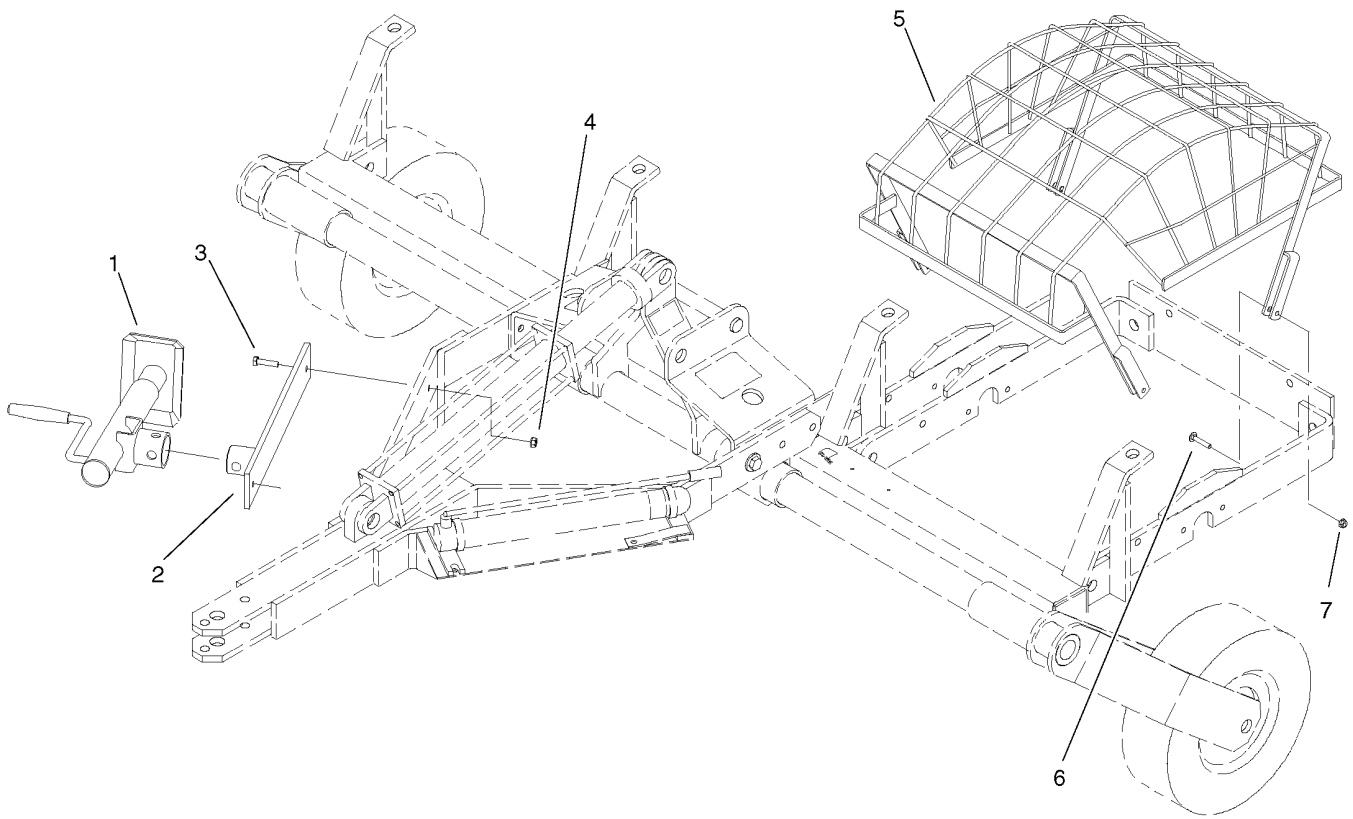
● Not illustrated



## Main Arm Assembly

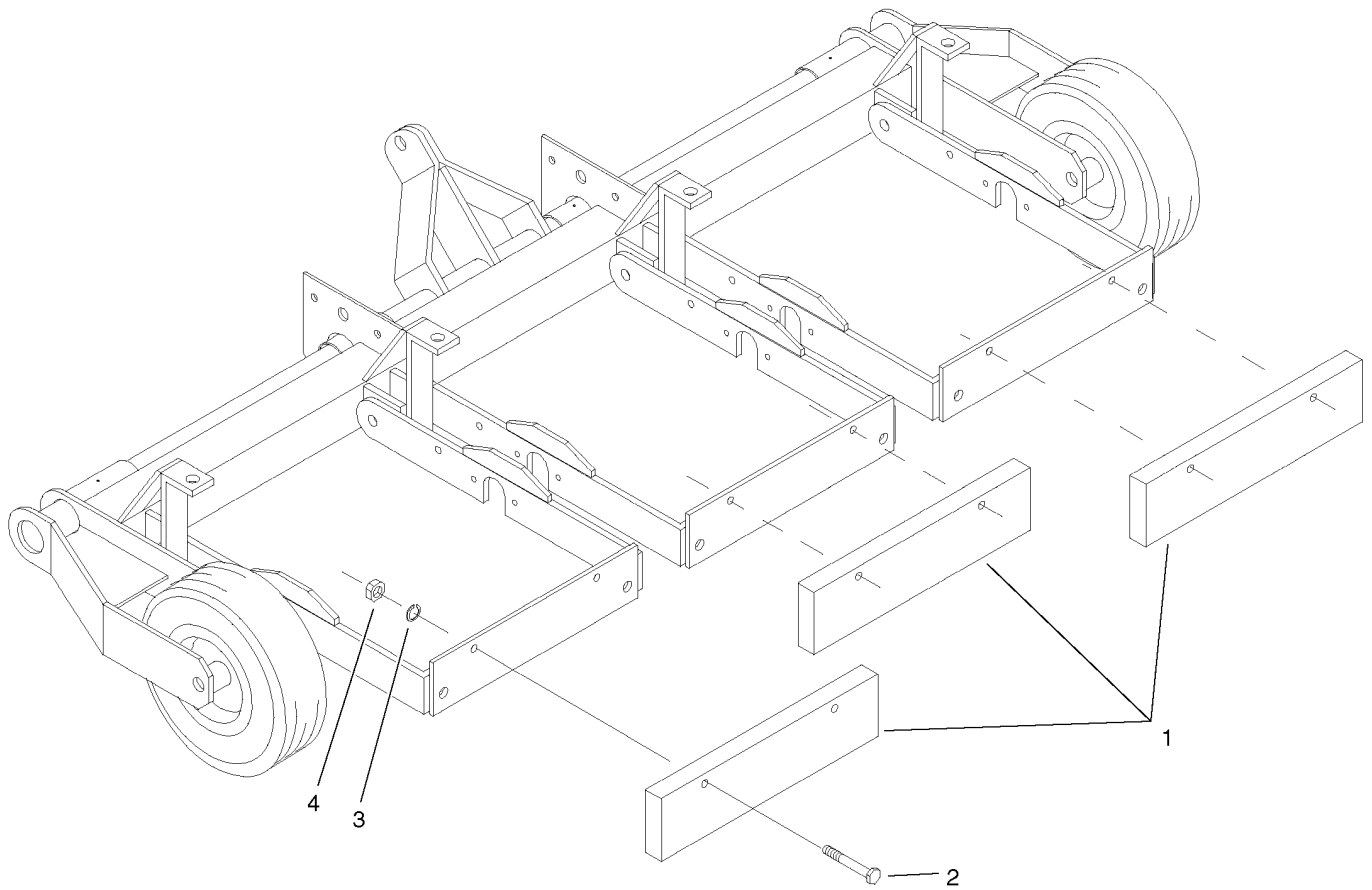
Ref.	Part Number	Qty.	Description
1	68-604-3571	2	Mount-Spring
2	95-0082	3	Arm-Main, RH
3	95-0081	3	Arm-Main, LH
6	01-261-0190	6	Spring
7	327-6	6	Screw-HH
8	68-604-3481	6	Washer
9	68-604-3151	18	Washer-Pivot
10	01-125-0050	12	Bushing
11	3256-7	18	Washer-Flat
12	3253-8	12	Washer-Lock
13	3218-6	6	Nut-Jam
14	01-158-0310	6	Bolt-Shoulder, Socket Head
15	3256-6	6	Washer-Flat
16	13-404-0221	12	Washer-Pivot
17	68-604-3491	6	Washer
18	3256-4	18	Washer-Flat
19	01-168-2018	6	Bushing
20	3296-39	18	Nut-Lock, NI
21	01-100-0160	6	Bearing-Flange, 2 Bolt
21:1	302-11	1	Fitting-Lube, 45 DEG
21:2	3245-35	1	Screw-Set, HSH

Ref.	Part Number	Qty.	Description
22	323-8	12	Screw-HH
23	68-604-3181	3	Shaft-Aerator
24	44-004-0262	12	Aerator Wheel ASM
24:1	32121-122	8	Pin-Roll
24:2	01-126-0030	1	Bushing
26	68-604-3421	9	Spacer-Center
27	68-604-3451	6	Spacer-Inside
28	68-604-3431	6	Spacer-End
29	3256-8	6	Washer-Flat
30	3218-7	12	Nut-Jam
31	01-168-2014	6	Bushing
32	01-168-1614	6	Bushing
33	68-604-3171	3	End-Arm, Main
34	327-7	6	Screw-HH
35	3217-11	6	Nut-Hex
36	01-168-2010	6	Bushing
37	3217-12	2	Nut-Hex
38	328-2	2	Screw-HH
39	3253-9	2	Washer-Lock
40	67-1300	1	Decal
41	58-6520	6	Decal-Grease



## Jack and Guard Assembly (Optional)

<i>Ref.</i>	<i>Part Number</i>	<i>Qty.</i>	<i>Description</i>
1	98-5016	1	Jack ASM
2	99-0091	1	Jack Mount Assembly
3	323-8	2	Screw-HH
4	3296-39	2	Nut-Lock, NI
5	95-3360	3	Guard ASM
6	3230-3	12	Screw-CARR
7	32128-20	12	Nut-HF

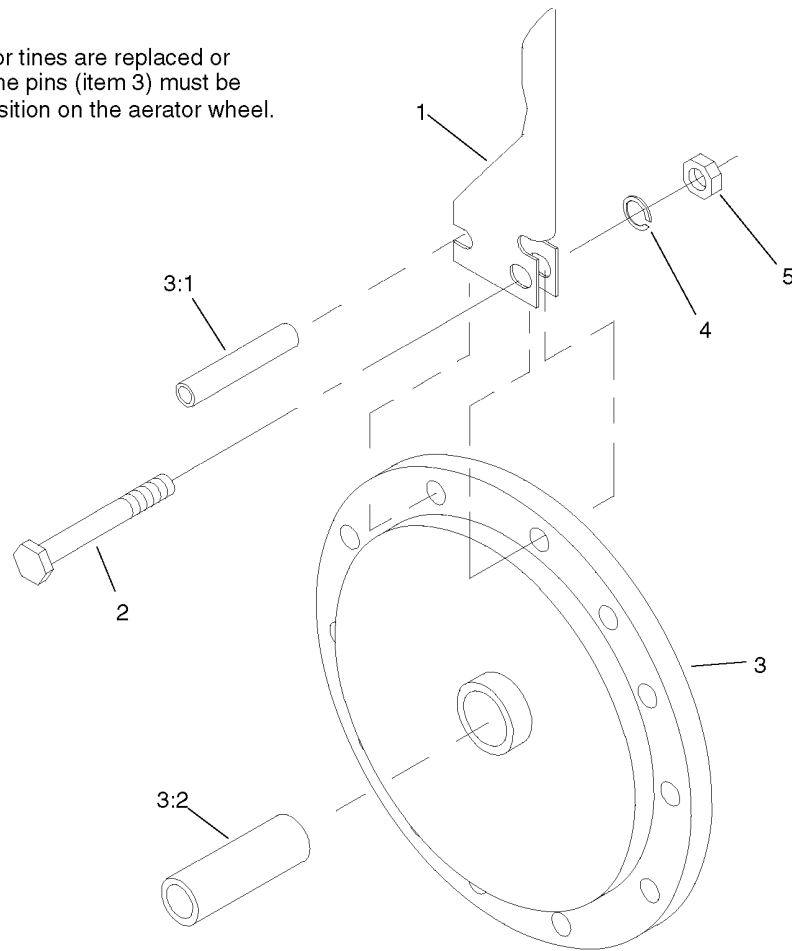


## Weight Kit (Optional)

<i>Ref.</i>	<i>Part Number</i>	<i>Qty.</i>	<i>Description</i>
1	68-604-3291	3	Bar-Weight
2	325-11	6	Screw-HH
3	3253-7	6	Washer-Lock
4	3217-9	6	Nut-HH



NOTE: When blades or tines are replaced or re-installed, the pins (item 3) must be in the front position on the aerator wheel.



## Tine and Blade Assembly

<i>Ref.</i>	<i>Part Number</i>	<i>Qty.</i>	<i>Description</i>
1	01-283-0030	96	Blade-Slicing, 4 Inch
1	01-283-0040	96	Blade-Slicing, 6 Inch ●
1	108-9297	96	Tine-Closed, 1/2 Inch ●
1	108-9296	96	Tine-Open, 1/2 Inch ●
1	108-9299	96	Tine-Closed, 3/4 Inch ●
1	108-9298	96	Tine-Open, 3/4 Inch ●
2	325-7	96	Screw-HH
3	44-004-0262	12	Aerator Wheel ASM
3:1	32121-122	8	Pin-Roll
3:2	01-126-0030	1	Bushing
4	3253-7	96	Washer-Lock
5	3217-9	96	Nut-HH

● Not illustrated

**Notes:**

**Notes:**



**Count on it.**