



Count on it.

Parts Catalog

Aerator 686

Model No. 44850—Serial No. 230000001 and Up

Ordering Replacement Parts

To order replacement parts, please supply the part number, the quantity, and the description of each part desired.

Understanding Reference Numbers

Each identified part in an illustration has a reference number. The reference number for a part also appears in the parts list, along with other information about the part.

This catalog uses two special reference number formats, one to indicate parts in a service assembly and another to indicate the quantity of a given part in an illustration.

Service Assembly Reference Numbers

Parts in service assemblies have reference numbers in the form a:b. The a represents the reference number of the entire service assembly and the b represents a sequential number unique to each part within the service assembly.

For example, a wheel assembly might be identified by reference number 6, the tire by 6:1, the valve by 6:2, and the wheel by 6:3. When you order the assembly identified by reference number 6, you receive all parts identified by reference numbers 6:1, 6:2, and 6:3. However, you may also order any part individually. Reference numbers of this type appear in illustration and in parts lists.

Reference Numbers Indicating Quantity

In an illustration, if a reference number indicates more than one part, the reference number has the form nX y. The n represents the quantity of the part, the X is the multiplication symbol, and the y represents the reference number.

For example, in an illustration, the reference number 2X 37 means that two of the parts identified by reference number 37 are indicated.

List of Abbreviations

AR: as required

ASM: assembly

BBC: blade brake control

BHTF: button head thread forming

CARR: carriage

CCW: counter clockwise

CW: clockwise

DEG: degrees

DPA: Dual Point Adjustment

ECM: electronic control module

EXT: external

FH: flat head

GA: gauge

HD: heavy-duty

HF: hex flange

HH: hex head

HHF: hex head flange

HHFTF: hex head flange thread forming

HJ: hex jam

HLH: hex lag head

HOC: height-of-cut

HSBH: hex socket button head

HSFH: hex socket flat head

HSH: hex socket head

HWH: hex washer head

HWTF: hex washer head thread forming

HYD: hydraulic

LH: left hand

LP: Liquid Propane

NI: nylon insert

NPTF: national pipe thread fine

PFH: phillips flat head

PPH: phillips pan head

PPHTF: phillips pan head thread forming

PRH: phillips round head

PTH: phillips truss head

PTO: power-take-off

RH: right hand

ROPS: roll-over protection system

RRB: rear roller brush

SFH: slotted fillister head

SHH: slotted hex head

SHWH: slotted hex washer head

SPH: slotted pan head

SQH: square head

SRH: slotted round head

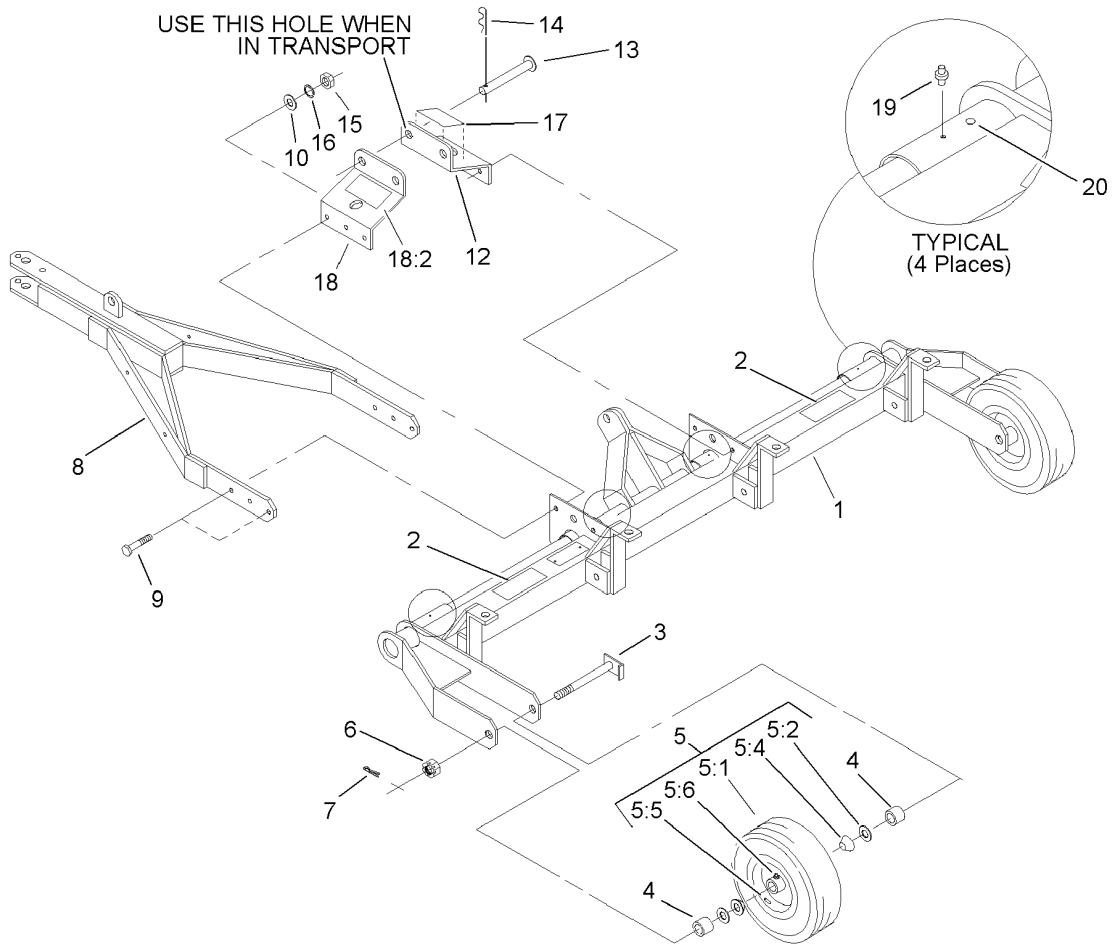
STD: standard

TAP: self tapping

TTH: torx truss head

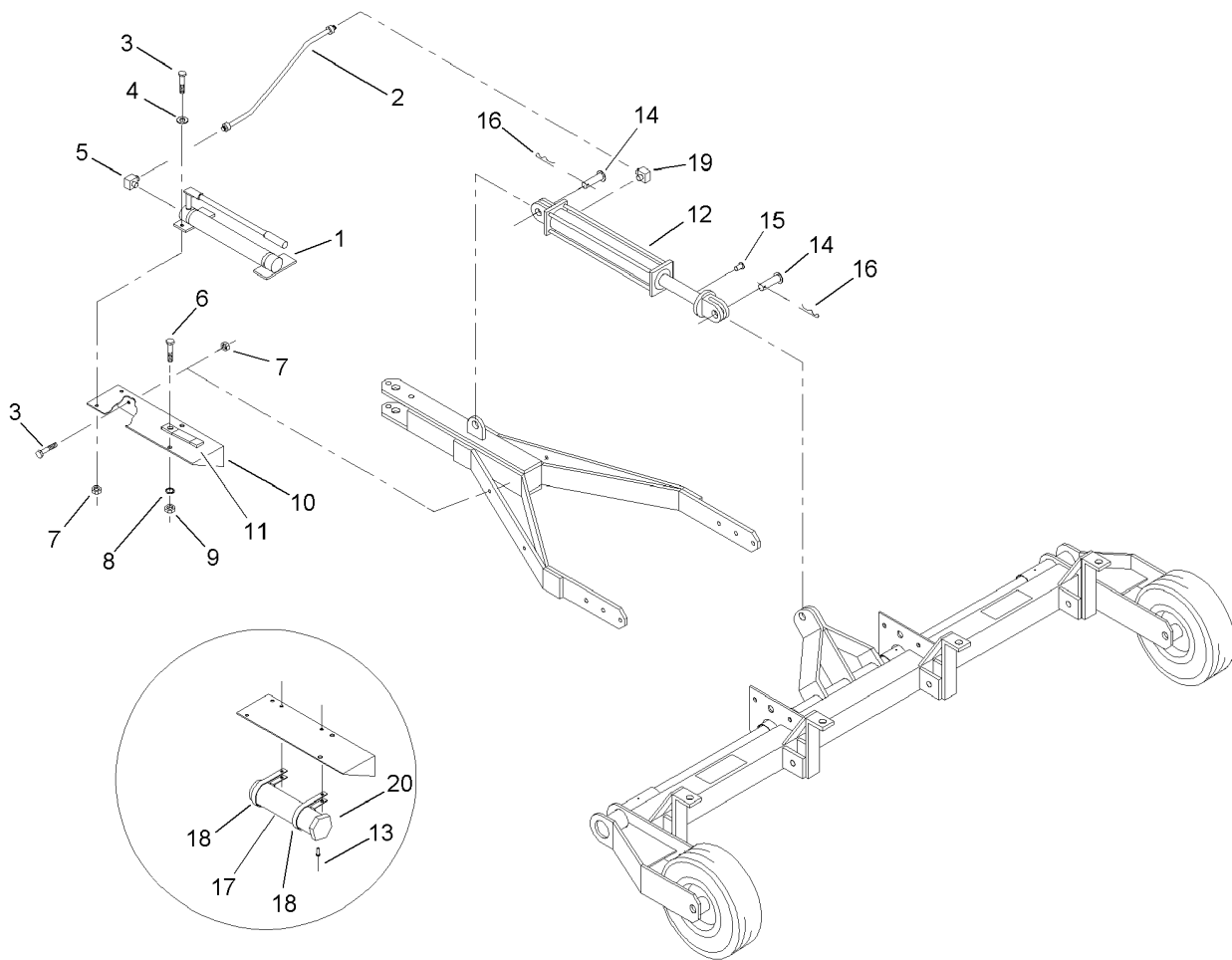
Contents

- Frame and Tongue Assembly 4
- Hand Pump and Cylinder Assembly 5
- Main Arm Assembly 6
- Tine and Blade Assembly 7



Frame and Tongue Assembly

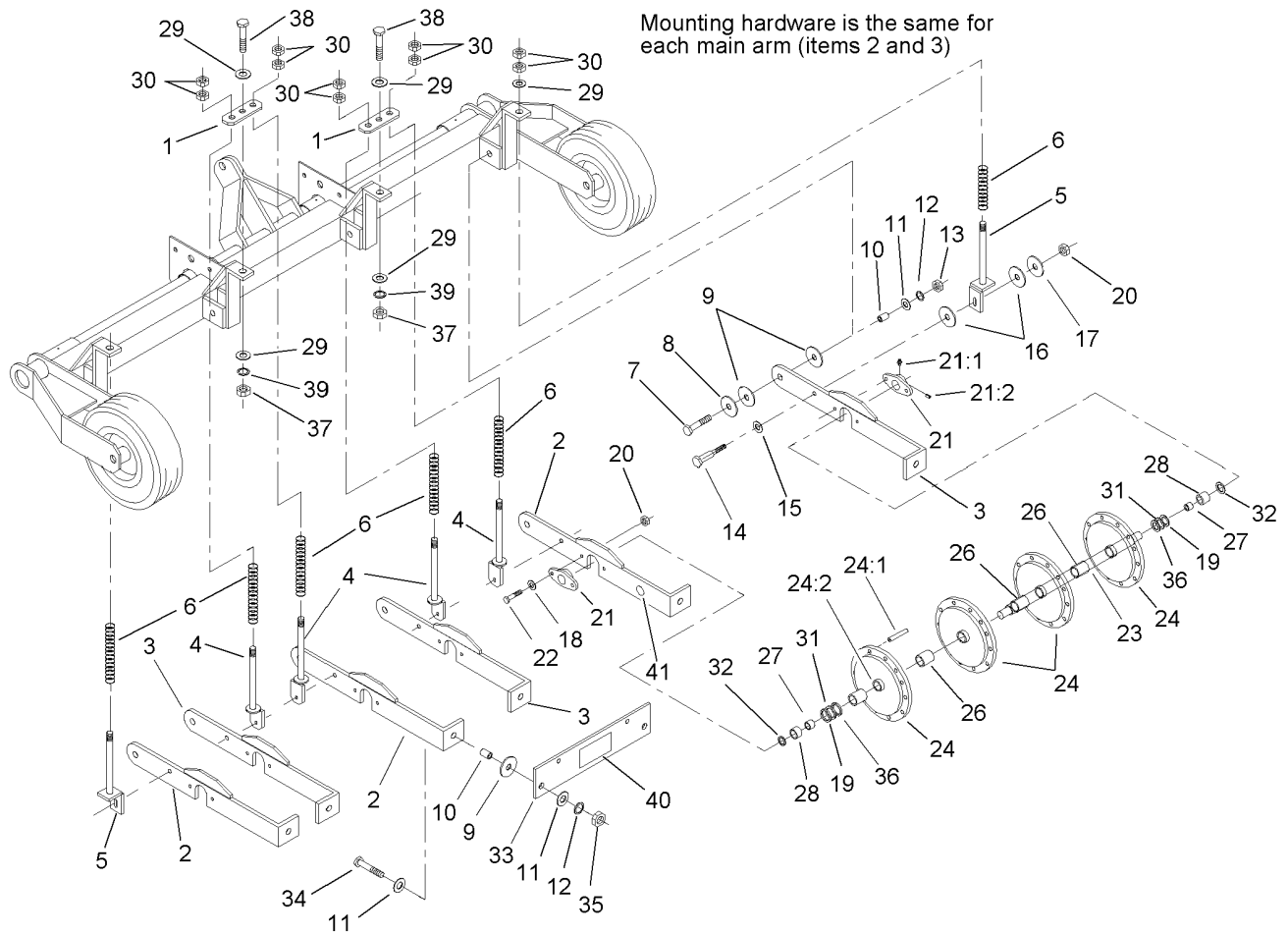
Ref.	Part Number	Qty.	Description	Ref.	Part Number	Qty.	Description
1	68-605-3053-01	1	Frame-Main	9	325-10	6	Screw-HH
2	01-506-0680	2	Decal-Aerator 686	10	3256-6	6	Washer-Flat
3	68-605-3701	2	Shaft-Axle	12	68-604-3532-01	1	Bar-Lock, Transport
4	68-604-3321	4	Spacer-Wheel	13	01-252-0060	1	Pin-Hitch
5	01-269-0230	2	Tire & Wheel	14	01-159-0060	1	Pin-Hair
5:1	106-9661	1	Tire	15	3217-9	6	Nut-HH
5:2	01-269-1460	2	Seal	16	3253-7	6	Washer-Lock
5:4	254-94	2	Bearing-Cone, Tapered	17	67-1300	1	Decal
5:5	232-35	1	Valve Stem And Cap ASM	18	106-0268	1	Transport Lock Bar ASM
5:6	302-5	1	Fitting-Grease	18:2	106-0229	1	Decal-Warning
6	01-190-1614	2	Nut-Slotted	19	01-215-0050	4	Zerk
7	3272-23	2	Pin-Cotter	20	58-6520	6	Decal-Grease
8	68-605-3102-01	1	Tongue				



Hand Pump and Cylinder Assembly

Ref.	Part Number	Qty.	Description
1	01-305-0040	1	Pump-Hand
2	01-312-0500	1	Hose-HYD
3	323-7	4	Screw-HH
4	3256-4	2	Washer-Flat
5	01-201-0190	1	Fitting-HYD
6	325-5	1	Screw-HH
7	3296-39	4	Nut-Lock, NI
8	3253-7	1	Washer-Lock
9	3217-9	1	Nut-HH
10	68-605-3081-01	1	Mount-Pump
11	68-604-3511-01	1	Vibration-Strap
12	100-9960	1	Cylinder-HYD
12:1	100-9961	1	Kit-Seal ●
13	01-161-0020	2	Rivet-Pop
14	01-252-0150	2	Pin-Clevis
15	100-9962	1	Fitting-Vent
16	01-159-0010	2	Pin
17	104-7050	1	Tube-Manual
18	2412-133	2	R-Clamp
19	340-134	1	Elbow-90
20	104-7048	1	Cap-Housing

● Not illustrated

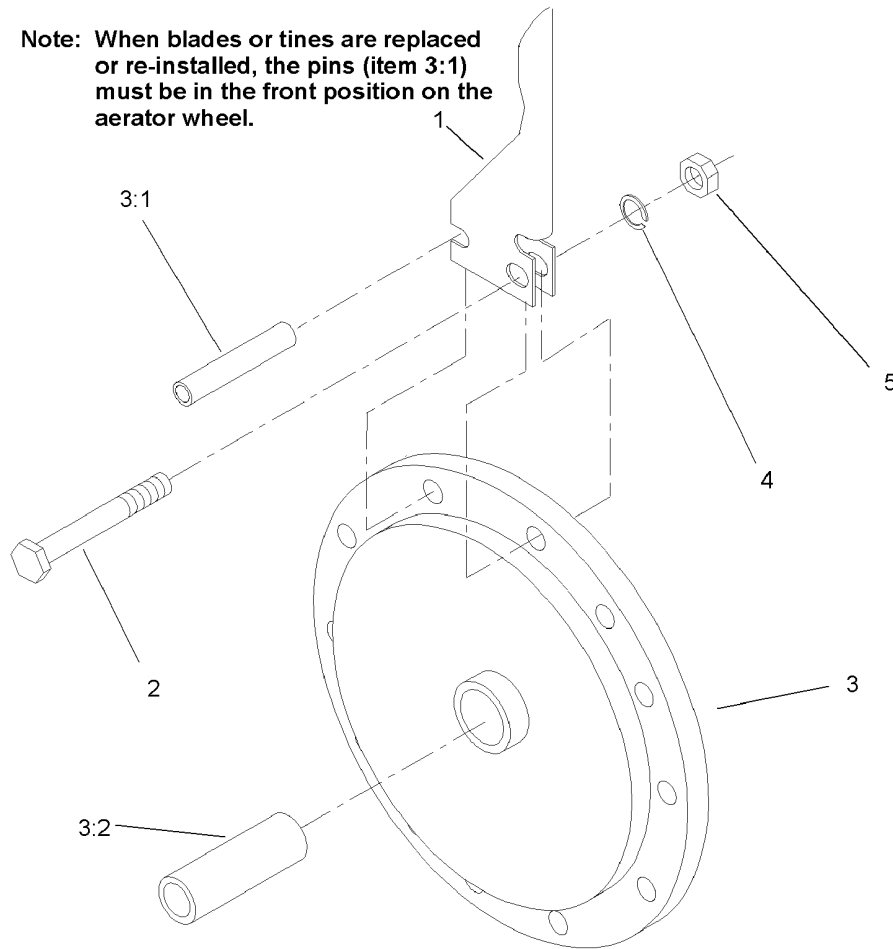


Main Arm Assembly

Ref.	Part Number	Qty.	Description
1	68-604-3571-01	2	Mount-Spring
2	95-0082-01	3	Arm-Main, RH
3	95-0081-01	3	Arm-Main, LH
4	105-7893	4	Inner Spring Bracket ASM
5	105-7894	2	Outer Spring Bracket ASM
6	01-261-0190	6	Spring
7	327-6	6	Screw-HH
8	68-604-3481	6	Washer
9	68-604-3151	18	Washer-Pivot
10	01-125-0050	12	Bushing
11	3256-7	18	Washer-Flat
12	3253-8	12	Washer-Lock
13	3218-6	6	Nut-Jam
14	01-158-0310	6	Bolt-Shoulder, Socket Head
15	3256-6	6	Washer-Flat
16	13-404-0221	12	Washer-Pivot
17	68-604-3491	6	Washer
18	3256-24	12	Washer-Flat
19	01-168-2018	6	Bushing
20	104-8301	18	Nut-Flange, NI
21	106-0289	6	Bearing-Flange
21:1	302-5	1	Fitting-Grease

Ref.	Part Number	Qty.	Description
21:2	3245-35	2	Screw-Set, HSH
22	323-8	12	Screw-HH
23	68-604-3181	3	Shaft-Aerator
24	44-004-0262	12	Aerator Wheel ASM
24:1	32121-122	8	Pin-Roll
24:2	01-126-0030	1	Bushing
26	68-604-3421	9	Spacer-Center
27	68-604-3451	6	Spacer-Inside
28	68-604-3431	6	Spacer-End
29	3256-8	6	Washer-Flat
30	3218-7	12	Nut-Jam
31	01-168-2014	6	Bushing
32	01-168-1614	6	Bushing
33	68-604-3171-01	3	Arm-Main, End
34	327-7	6	Screw-HH
35	3217-11	6	Nut-Hex
36	01-168-2010	6	Bushing
37	3217-12	2	Nut-Hex
38	328-2	2	Screw-HH
39	3253-9	2	Washer-Lock
40	67-1300	1	Decal
41	58-6520	6	Decal-Grease

Note: When blades or tines are replaced or re-installed, the pins (item 3:1) must be in the front position on the aerator wheel.



Tine and Blade Assembly

Ref.	Part Number	Qty.	Description
1	01-283-0030	96	Blade-Slicing, 4 Inch
1	01-283-0040	96	Blade-Slicing, 6 Inch ●
1	108-9297	96	Tine-Closed, 1/2 Inch ●
1	108-9296	96	Tine-Open, 1/2 Inch ●
1	108-9299	96	Tine-Closed, 3/4 Inch ●
1	108-9298	96	Tine-Open, 3/4 Inch ●
2	325-7	96	Screw-HH
3	44-004-0262	12	Aerator Wheel ASM
3:1	32121-122	8	Pin-Roll
3:2	01-126-0030	1	Bushing
4	3253-7	96	Washer-Lock
5	3217-9	96	Nut-HH

● Not illustrated



Count on it.