



**Count on it.**

# Parts Catalog

## Light Kit, Groundsmaster® 5900 Series Rotary Mower

Model No. 31582

# Ordering Replacement Parts

To order replacement parts, please supply the part number, the quantity, and the description of each part desired.

## Understanding Reference Numbers

Each identified part in an illustration has a reference number. The reference number for a part also appears in the parts list, along with other information about the part.

This catalog uses two special reference number formats, one to indicate parts in a service assembly and another to indicate the quantity of a given part in an illustration.

## Service Assembly Reference Numbers

Parts in service assemblies have reference numbers in the form a:b. The a represents the reference number of the entire service assembly and the b represents a sequential number unique to each part within the service assembly.

For example, a wheel assembly might be identified by reference number 6, the tire by 6:1, the valve by 6:2, and the wheel by 6:3. When you order the assembly identified by reference number 6, you receive all parts identified by reference numbers 6:1, 6:2, and 6:3. However, you may also order any part individually. Reference numbers of this type appear in illustration and in parts lists.

## Reference Numbers Indicating Quantity

In an illustration, if a reference number indicates more than one part, the reference number has the form nX y. The n represents the quantity of the part, the X is the multiplication symbol, and the y represents the reference number.

For example, in an illustration, the reference number 2X 37 means that two of the parts identified by reference number 37 are indicated.

# List of Abbreviations

**AR:** as required

**ASM:** assembly

**BBC:** blade brake control

**BHTF:** button head thread forming

**CARR:** carriage

**CCW:** counter clockwise

**CW:** clockwise

**DEG:** degrees

**DPA:** Dual Point Adjustment

**ECM:** electronic control module

**EXT:** external

**FH:** flat head

**GA:** gauge

**HD:** heavy-duty

**HF:** hex flange

**HH:** hex head

**HHF:** hex head flange

**HHFTF:** hex head flange thread forming

**HJ:** hex jam

**HLH:** hex lag head

**HOC:** height-of-cut

**HSBH:** hex socket button head

**HSFH:** hex socket flat head

**HSH:** hex socket head

**HWH:** hex washer head

**HWHTF:** hex washer head thread forming

**HYD:** hydraulic

**LH:** left hand

**LP:** Liquid Propane

**NI:** nylon insert

**NPTF:** national pipe thread fine

**PFH:** phillips flat head

**PPH:** phillips pan head

**PPHTF:** phillips pan head thread forming

**PRH:** phillips round head

**PTH:** phillips truss head

**PTO:** power-take-off

**RH:** right hand

**ROPS:** roll-over protection system

**RRB:** rear roller brush

**SFH:** slotted fillister head

**SHH:** slotted hex head

**SHWH:** slotted hex washer head

**SPH:** slotted pan head

**SQH:** square head

**SRH:** slotted round head

**STD:** standard

**TAP:** self tapping

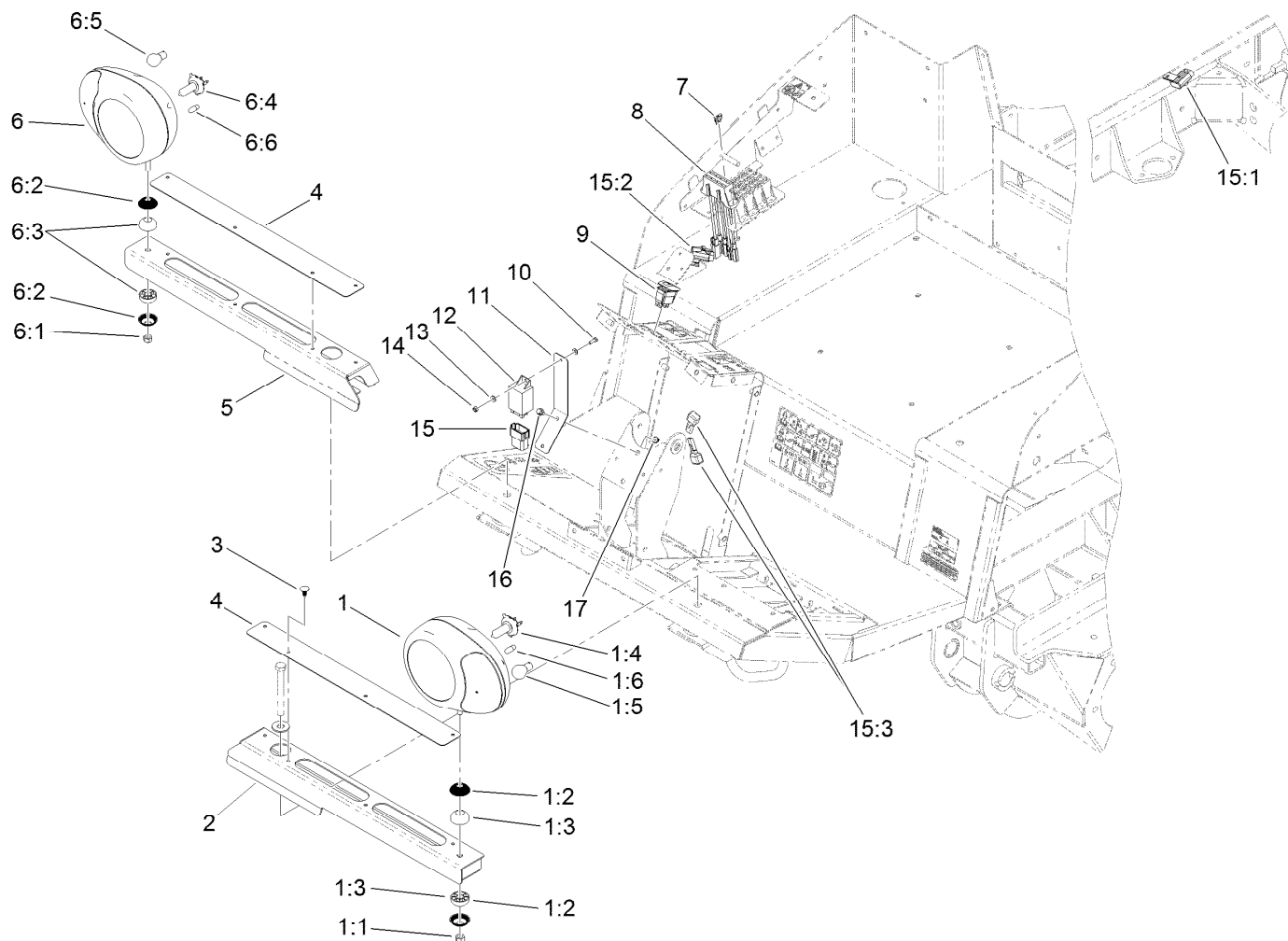
**TTH:** torx truss head

# Contents

Front Headlamp and Electical Assembly ..... 4

Cab Headlamp Assembly ..... 5

Rear Lamp Assembly ..... 6

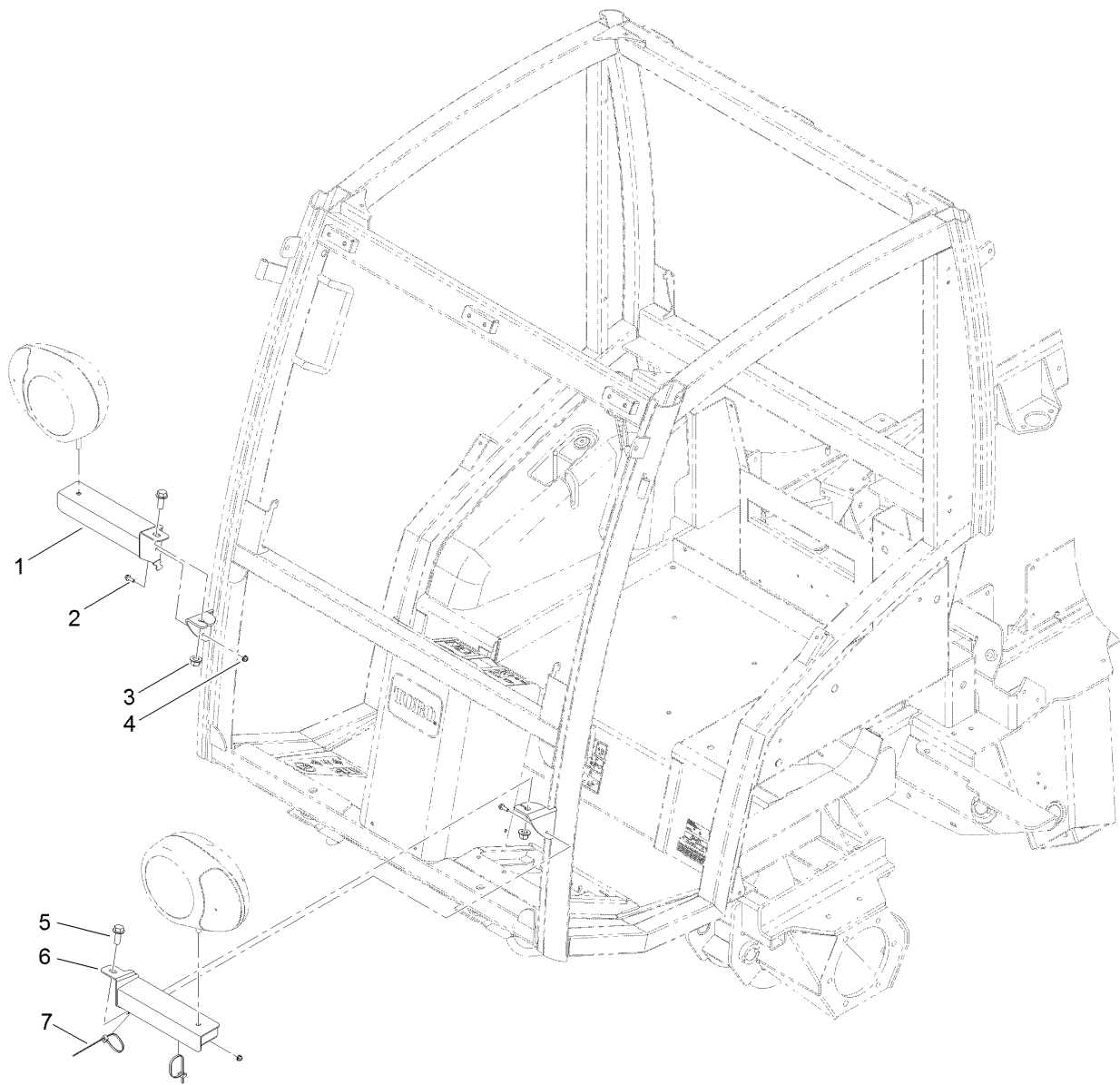


## Front Headlamp and Electrical Assembly

Ref.	Part Number	Qty.	Description
1	119-8324	1	Headlamp-Left
1:1	33025-00	1	Nut-Lock, NI
1:2	120-0475	2	Shell-Articulated
1:3	120-0474	2	Joint-Articulated
1:4	120-0471	1	Bulb-Halogen, H4
1:5	120-0472	1	Bulb-Light, Py21W
1:6	120-0473	1	Bulb-Light, T4W
2	120-9850-03	1	Headlamp Mount ASM-LH
3	117-2382	8	Plug-Plastic
4	120-9853-03	2	Panel-Cover, Headlamps
5	120-9880-03	1	Headlamp Mount ASM-RH
6	119-8323	1	Headlamp-Right
6:1	33025-00	1	Nut-Lock, NI
6:2	120-0475	2	Shell-Articulated
6:3	120-0474	2	Joint-Articulated
6:4	120-0471	1	Bulb-Halogen, H4
6:5	120-0472	1	Bulb-Light, Py21W

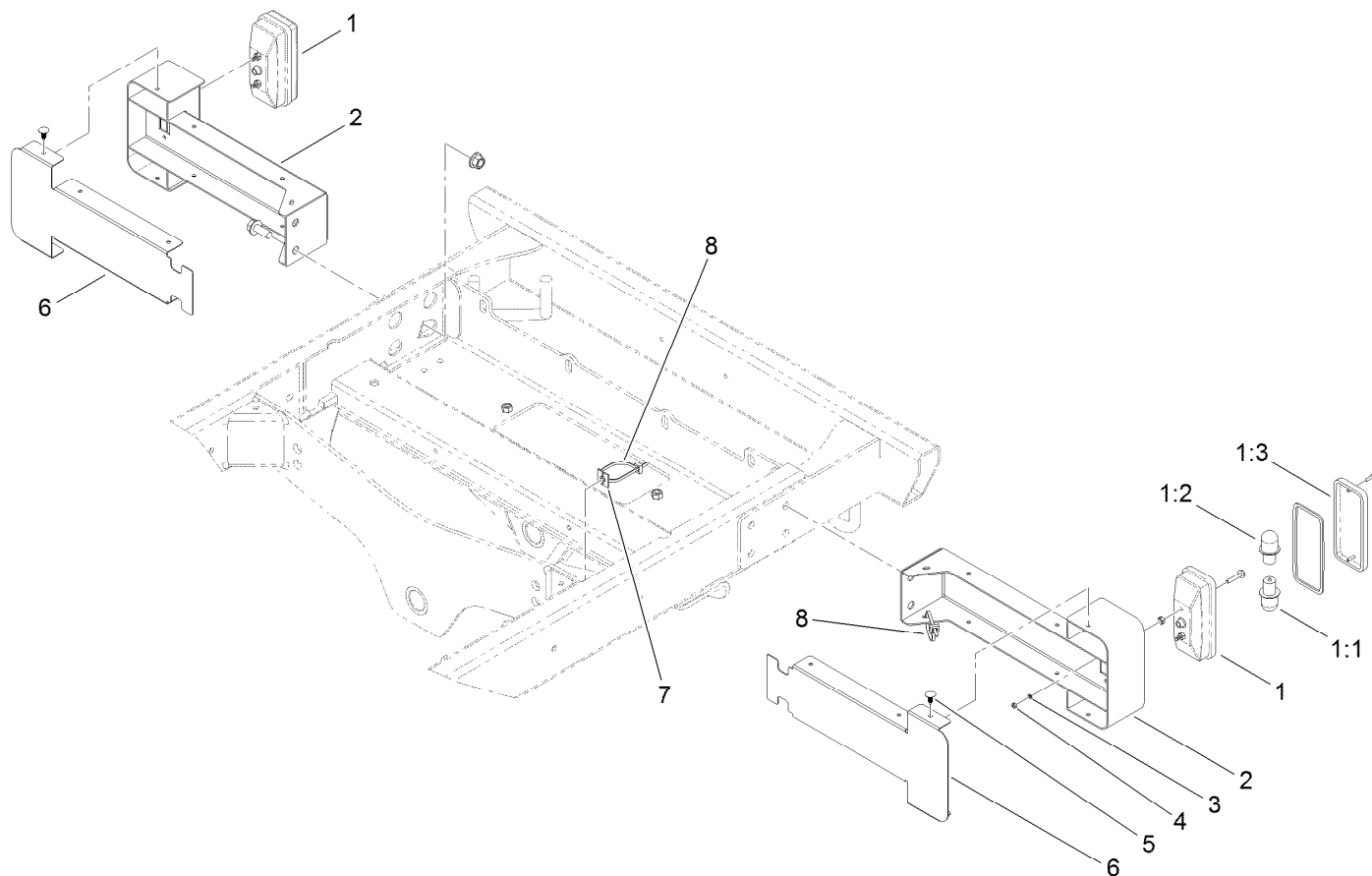
Ref.	Part Number	Qty.	Description
6:6	120-0473	1	Bulb-Light, T4W
7	218-578	1	Fuse-Blade, 10 Amp
8	92-2641	1	Block-Fuse
9	119-7769	1	Switch-Rocker, On-None-On
10	3290-134	1	Screw
11	120-9854-01	1	Bracket-Flasher
12	119-9880	1	Module-Flasher
13	3256-14	2	Washer-Flat
14	3296-2	1	Nut-Lock, NI
15	120-6334	1	Harness-Wire, Eu Light Kit
15:1	110928	2	Fuse-Blade, 5 Amp
15:2	218-578	1	Fuse-Blade, 10 Amp
15:3	100-4918	2	Diode
16	3234-13	2	Screw-HHF
17	104-7201	2	Nut-HF
99	3290-378	30	Tie-Cable ●

● Not illustrated



## Cab Headlamp Assembly

Ref.	Part Number	Qty.	Description
1	120-9855-03	1	Cab Mount ASM-RH
2	115-5103	2	Screw-HHF
3	99-5107	2	Nut-Lock
4	104-7201	2	Nut-HF
5	3234-38	2	Screw-HHF
6	120-9871-03	1	Headlamp Mount ASM
7	3290-378	6	Tie-Cable



## Rear Lamp Assembly

Ref.	Part Number	Qty.	Description
1	119-8093	2	Lamp-Rear
1:1	120-7552	1	Bulb-P21W 12V
1:2	120-6657	1	Bulb-P21/5W
1:3	120-6656	1	Lens
2	120-9860-03	2	Rearlamp Mount ASM
3	48-8000	4	Washer-Lock
4	48-7880	4	Nut-Hex
5	117-2382	12	Plug-Plastic
6	120-9859-03	2	Panel-Rearlamp, LH
7	93-3922	2	Mount-Tie, Cable
8	3290-378	4	Tie-Cable

**Notes:**



**Count on it.**