



Registration Plate Kit

Groundsmaster® 5900 Series Rotary Mower

Model No. 120-7570

Installation Instructions

Note: The Groundsmaster 5900 Series Rotary Mower must be equipped with the Light Kit, Model 31582 to operate the Registration Plate Kit Light.

1. Position the machine on a level surface, stop the engine, remove the ignition key and engage parking brake.

⚠ CAUTION

If you leave the key in the ignition switch, someone could accidentally start the engine and seriously injure you or other bystanders.

Remove the key from the ignition switch before you do any maintenance.

2. Mount the plate light to the registration plate with (2) #10 x 5/8 inch screws and #10 lock nuts (Figure 1). Do not over tighten. Make sure the lens points downward and the wires are inserted through the hole in the plate mount.

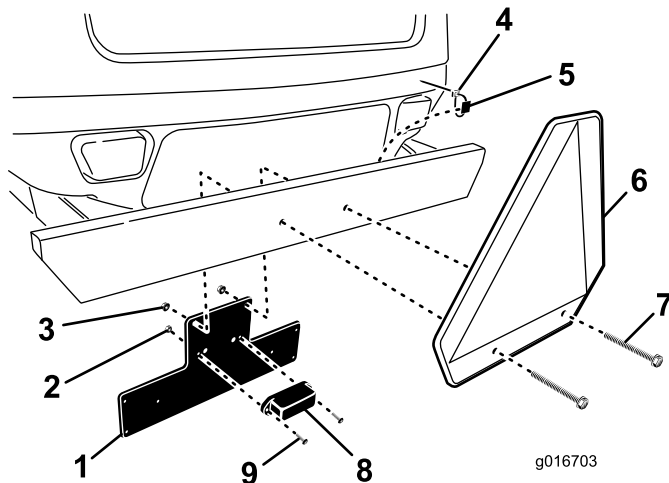


Figure 1

- | | | |
|-----------------------|-----------------------------|----------------------------|
| 1. Registration plate | 4. Cable tie | 7. Screw, 1/4 x 2-3/4 inch |
| 2. Lock nut, #10 | 5. Cable tie mount | 8. Plate light |
| 3. Lock nut, 1/4 inch | 6. Slow Moving Vehicle Sign | 9. Screw, #10 x 5/8 inch |

4. Using (2) 1/4 x 2-3/4 inch screws and 1/4 inch nuts, mount the slow moving vehicle sign (if required) and the registration plate to the bumper (Figure 1).
5. Using the wires included with the Light Kit, connect the registration plate light wires to the light kit harness.

Important: Make sure the wires are clear of all hot, sharp or moving components.

6. Secure the wires to bumper with the cable tie mounting pads and cable ties (Figure 1).

Important: Make sure the mounting surface is cleaned with rubbing alcohol before installing the mounting pads. Press and hold the mounting pad for 15 seconds when installing.

7. Check the operation of the registration plate light.

3. Remove the (2) screws and nuts securing the slow moving vehicle sign to the bumper (Figure 1).

Note: If the slow moving vehicle sign was secured with self tapping screws, the bumper mounting holes, in both walls, must be enlarged to .281 inch (.7 cm) diameter holes before the sign can be re-installed.