



CE Kit
Multi-Pro® 5800 Turf Sprayer
 Model No. 120-0637

Installation Instructions

Safety

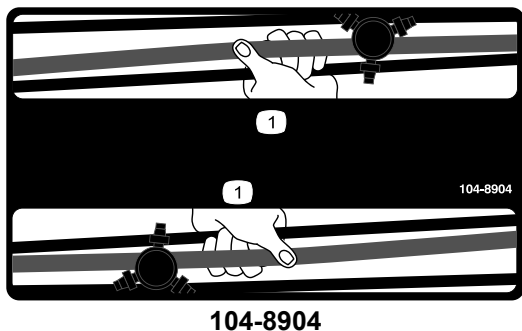
Safety and Instructional Decals



Safety decals and instructions are easily visible to the operator and are located near any area of potential danger. Replace any decal that is damaged or lost.



1. Horn



1. Grab boom here



119-9434

1. Tank contents

Installation

Loose Parts

Use the chart below to verify that all parts have been shipped.

Procedure	Description	Qty.	Use
1	Fan guard	1	Install the fan guard.
	Carriage bolt (5/16 x 3/4 inch)	4	
	Flange nut (5/16 inch)	4	
2	Horn	1	Install the horn.
	Bolt, 5/16 x 3/4 inch	1	
	Flange nut, 5/16 inch	1	
3	Horn button assembly	1	Install the wire harness and horn switch.
	Wire harness	1	
	Screw	2	
	Plastic ties	3	
4	Decal, horn	1	Apply the horn decal.
5	Decal, boom	2	Apply the decals on the booms.
6	Tank contents slate	1	Install the tank contents slate.

1

Installing the Fan Guard

Parts needed for this procedure:

1	Fan guard
4	Carriage bolt (5/16 x 3/4 inch)
4	Flange nut (5/16 inch)

Procedure

The fan guard is to be installed under the center console.

1. Rotate both seats forward.
2. Remove the two bolts and nuts from the center console (Figure 1).

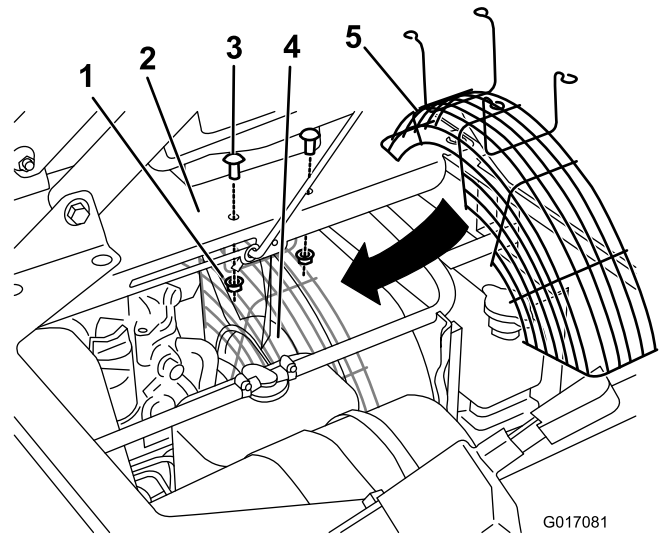


Figure 1

- | | |
|------------------------------------|--------------|
| 1. Flange nut (5/16 inch) | 4. Fan |
| 2. Center console | 5. Fan guard |
| 3. Carriage bolt (5/16 x 3/4 inch) | |

3. Position the guard under the center console and above the fan (Figure 1).
4. Install the fan guard to the center console with four carriage bolts (5/16 x 3/4 inch) and four flange nuts (5/16 inch) (Figure 1).

2

Installing the Horn

Parts needed for this procedure:

1	Horn
1	Bolt, 5/16 x 3/4 inch
1	Flange nut, 5/16 inch

Procedure

1. Bend the middle tab at the end of the bracket to a 90 degree angle (Figure 2).

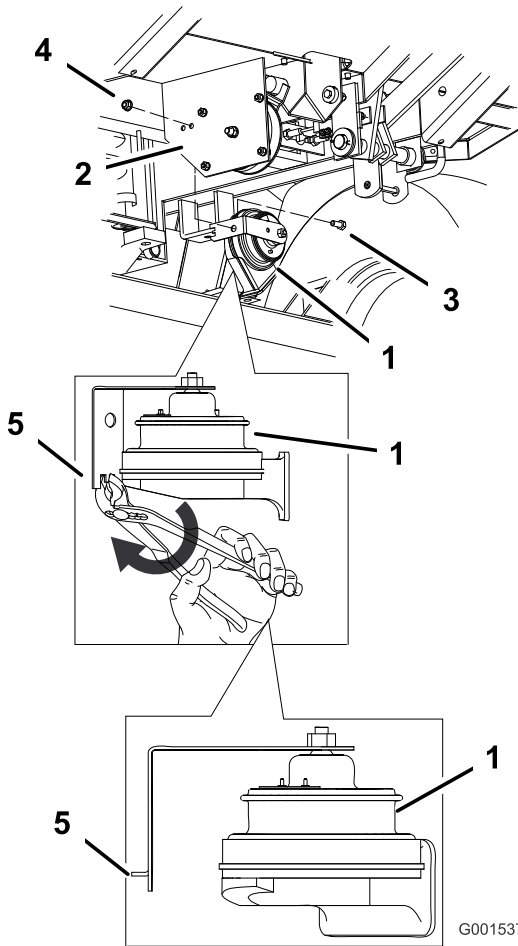


Figure 2

1. Horn
2. Clutch plate
3. Bolt (5/16 x 3/4 inch)
4. Flange nut (5/16 inch)
5. Bend the tab on bracket to a 90 degree angle

2. Install the bent tab into the back hole that was previously drilled. Secure the horn to the clutch plate

using a bolt (5/16 x 3/4 inch) and a flange nut (5/16 inch) (Figure 2).

3

Installing the Wire Harness and Horn Switch

Parts needed for this procedure:

1	Horn button assembly
1	Wire harness
2	Screw
3	Plastic ties

Installing the Horn Button

1. Remove the plastic plug in the dash to expose the hole for the horn switch.
2. Open the horn button packing that includes the horn switch and face nut and hex nut.
3. Thread the larger, flat hex nut onto the exposed threads of the switch body (Figure 3).

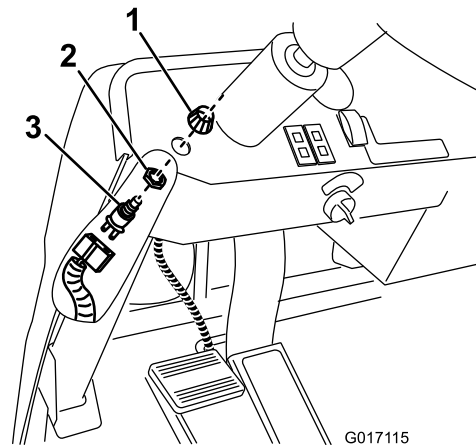


Figure 3

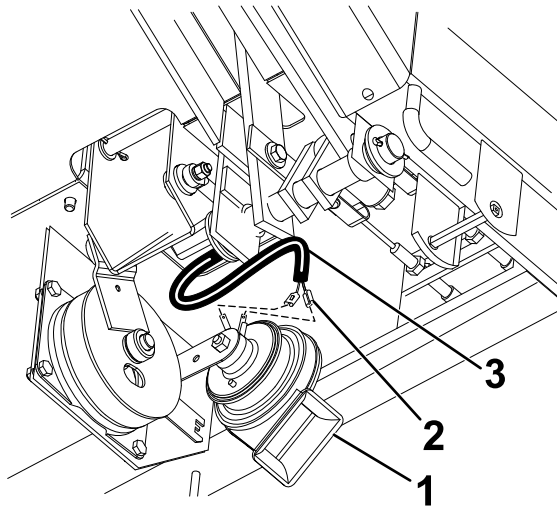
1. Threaded nut
2. Flat, hex nut
3. Horn switch

4. Locate the flat, two slot horn connector on the wiring harness from loose parts.
5. Connect the flat, two slot connector to the horn switch (Figure 3).
6. Move the switch assembly under the dash and push it through the hole (Figure 3).
7. Screw the horn face nut onto the switch threads to secure the assembly to the dash (Figure 3).

Note: Adjust the retaining ring and horn button cap as necessary to seat the switch securely to the dash.

Connecting the Harness to the Horn

Under the floor board, connect the two quick connect terminals to the horn (Figure 4).



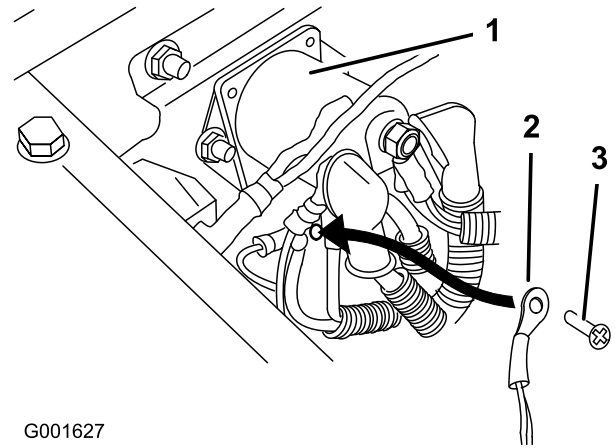
G017117

Figure 4

1. Horn
2. Quick connect terminals
3. Wiring harness

Connecting the Harness Ground and Power

1. Raise the drivers seat to locate the solenoid.
2. Remove one of the ground screws located under the solenoid (Figure 5).
3. Install the wire harness to the ground block with the previously removed ground screw (Figure 5).



G001627

Figure 5

1. Solenoid
2. Ground connection
3. Ground screw

4. Connect the spade terminal on the wiring harness labeled “horn” to the wire coming fuse block with the matching label.

Installing the Plastic Ties

Install the wire harness to the machine frame with plastic ties.

4

Applying the Horn Decal

Parts needed for this procedure:

1	Decal, horn
---	-------------

Procedure

1. Clean the decal area above the horn button and make sure it is free of dirt, grease, or other foreign material.
2. Remove the backing of the new decal and place just above the horn button on the dash.

5

Applying the Decals on the Booms

Parts needed for this procedure:

2	Decal, boom
---	-------------

Procedure

1. Measure from the end of the booms as shown in Figure 6.

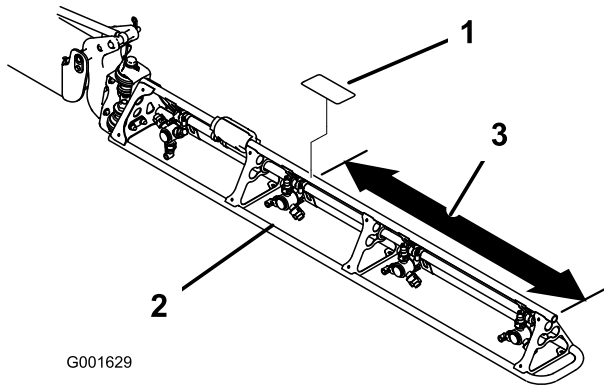


Figure 6

1. Decal
2. Boom
3. Measure 90 cm (35-1/2 inches)

2. Clean the decal area and make sure the area is free of dirt, grease, or other foreign material.
3. Remove the backing of the new decal and place onto the boom (Figure 6).
4. Repeat the procedure on the opposing boom.

6

Installing the Tank Contents Slate

Parts needed for this procedure:

1	Tank contents slate
---	---------------------

Procedure

Locate the erasable tank contents slate in loose parts. The magnetic backing allows it to be affixed to any metallic

surface. The Toro® Company recommends affixing on the ROPS directly behind the operator's position. Place the slate on the ROPS bar to install.

Notes:

Notes:



Count on it.