



Rear Roller Adjustment Kit

Greensmaster® DPA Reel Mowers

Model No. 120-9602

Form No. 3369-660 Rev A

Installation Instructions

1. Raise the rear of the cutting unit and place a block under the bedknife.
2. Remove the 2 nuts securing the roller retainer, roller, spacer, and shim to the left or right sideplate mounting flange (Figure 1). Remove the components.

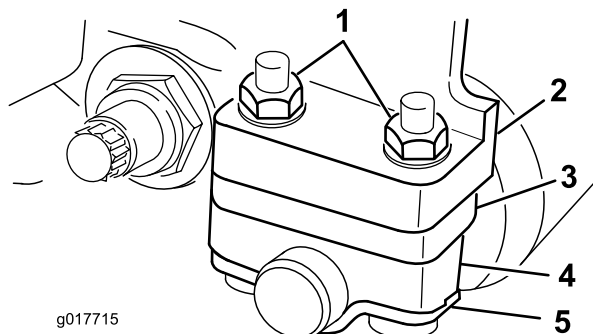


Figure 1

- | | |
|-------------------------------|--------------------|
| 1. Mounting nuts | 4. Roller spacer |
| 2. Side plate mounting flange | 5. Roller retainer |
| 3. Shim | |

3. Lightly tap the shaft adjuster onto the roller shaft (Figure 2).
4. Loosely mount the shaft adjuster and roller shaft to the side plate mounting flange with a new roller spacer, new shaft retainer and previously removed shim, screws, and nuts (Figure 2).

Do not tighten the fasteners at this time. Make sure the shim is in the correct position for the desired height of cut. Refer to the Cutting Unit *Operator's Manual* for adjustment information.

Note: Ensure that the spacer and retainer are seated inside the flanges of the shaft adjuster.

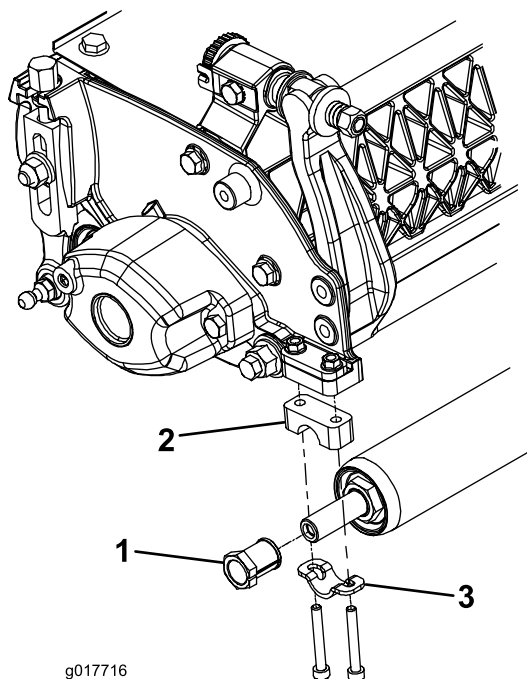


Figure 2

- | | |
|-------------------|-------------------|
| 1. Shaft adjuster | 3. Shaft retainer |
| 2. Roller spacer | |

5. With the cutting unit positioned on a surface plate, rotate the shaft adjuster until each end of the rear roller contacts the surface.

Note: When leveling the rear roller, the front roller must not be contacting the surface plate.

6. Tighten the mounting fasteners.
7. Adjust to the desired height of cut.