



**Count on it.**

Form No. 3366-954 Rev B

# Parts Catalog

## Road Light Kit

**North American Groundsmaster® 360  
Multi-Purpose Machine without Cab**

**Model No. 30513**

# Ordering Replacement Parts

To order replacement parts, please supply the part number, the quantity, and the description of each part desired.

## Understanding Reference Numbers

Each identified part in an illustration has a reference number. The reference number for a part also appears in the parts list, along with other information about the part.

This catalog uses two special reference number formats, one to indicate parts in a service assembly and another to indicate the quantity of a given part in an illustration.

## Service Assembly Reference Numbers

Parts in service assemblies have reference numbers in the form a:b. The a represents the reference number of the entire service assembly and the b represents a sequential number unique to each part within the service assembly.

For example, a wheel assembly might be identified by reference number 6, the tire by 6:1, the valve by 6:2, and the wheel by 6:3. When you order the assembly identified by reference number 6, you receive all parts identified by reference numbers 6:1, 6:2, and 6:3. However, you may also order any part individually. Reference numbers of this type appear in illustration and in parts lists.

## Reference Numbers Indicating Quantity

In an illustration, if a reference number indicates more than one part, the reference number has the form nX y. The n represents the quantity of the part, the X is the multiplication symbol, and the y represents the reference number.

For example, in an illustration, the reference number 2X 37 means that two of the parts identified by reference number 37 are indicated.

# List of Abbreviations

**AR:** as required

**ASM:** assembly

**BBC:** blade brake control

**BHTF:** button head thread forming

**CARR:** carriage

**CCW:** counter clockwise

**CW:** clockwise

**DEG:** degrees

**DPA:** Dual Point Adjustment

**ECM:** electronic control module

**EXT:** external

**FH:** flat head

**GA:** gauge

**HD:** heavy-duty

**HF:** hex flange

**HH:** hex head

**HHF:** hex head flange

**HHFTF:** hex head flange thread forming

**HJ:** hex jam

**HLH:** hex lag head

**HOC:** height-of-cut

**HSBH:** hex socket button head

**HSFH:** hex socket flat head

**HSH:** hex socket head

**HWH:** hex washer head

**HWHTF:** hex washer head thread forming

**HYD:** hydraulic

**LH:** left hand

**LP:** Liquid Propane

**NI:** nylon insert

**NPTF:** national pipe thread fine

**PFH:** phillips flat head

**PPH:** phillips pan head

**PPHTF:** phillips pan head thread forming

**PRH:** phillips round head

**PTH:** phillips truss head

**PTO:** power-take-off

**RH:** right hand

**ROPS:** roll-over protection system

**RRB:** rear roller brush

**SFH:** slotted fillister head

**SHH:** slotted hex head

**SHWH:** slotted hex washer head

**SPH:** slotted pan head

**SQH:** square head

**SRH:** slotted round head

**STD:** standard

**TAP:** self tapping

**TTH:** torx truss head

# Contents

Front Worklight Assembly . . . . . 4

Steering Column Cover and Switch Assembly . . . . . 5

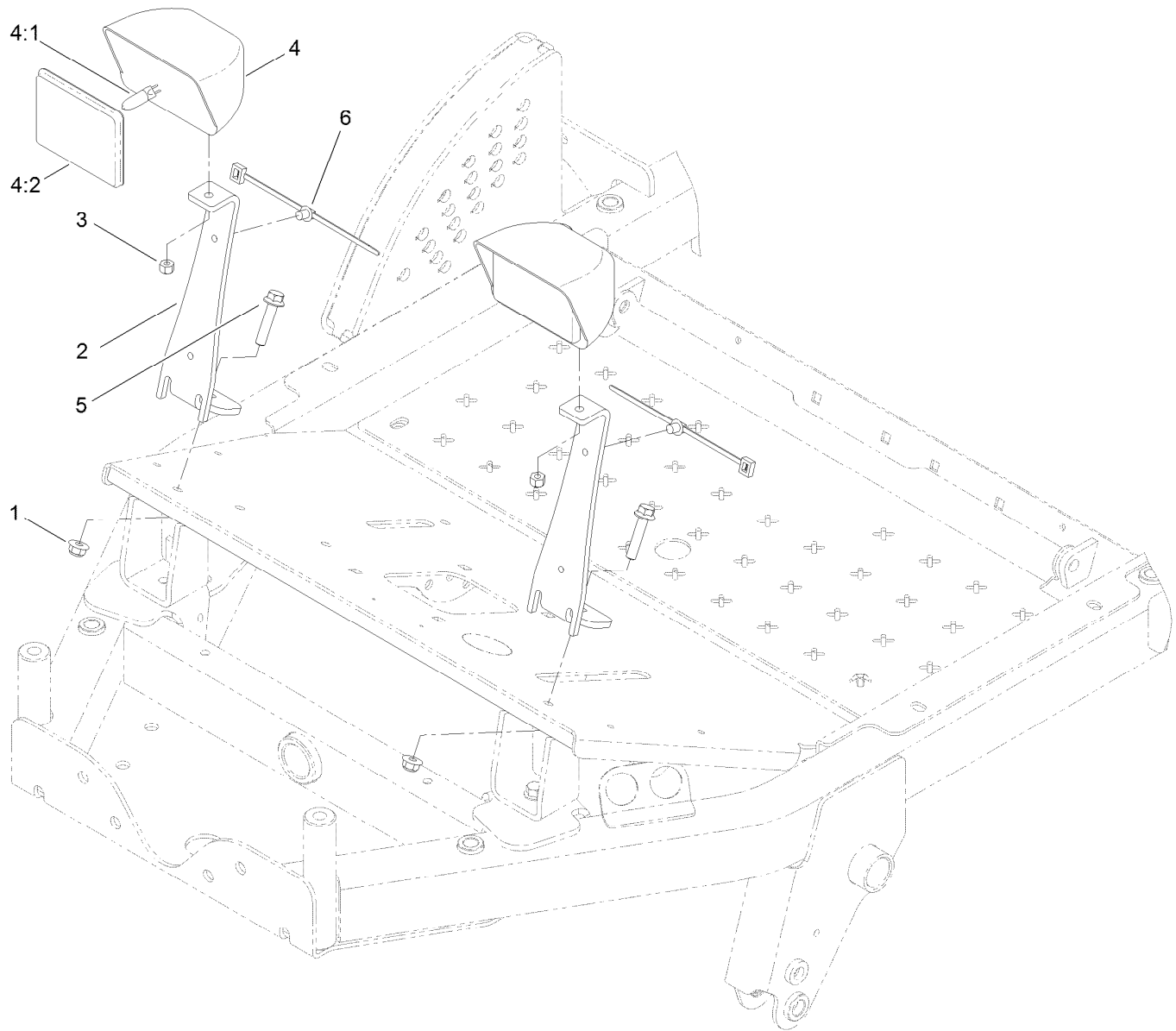
Flasher Box Assembly . . . . . 6

Slow Moving Sign Assembly . . . . . 7

Tail Light and Rear Worklight Assembly . . . . . 8

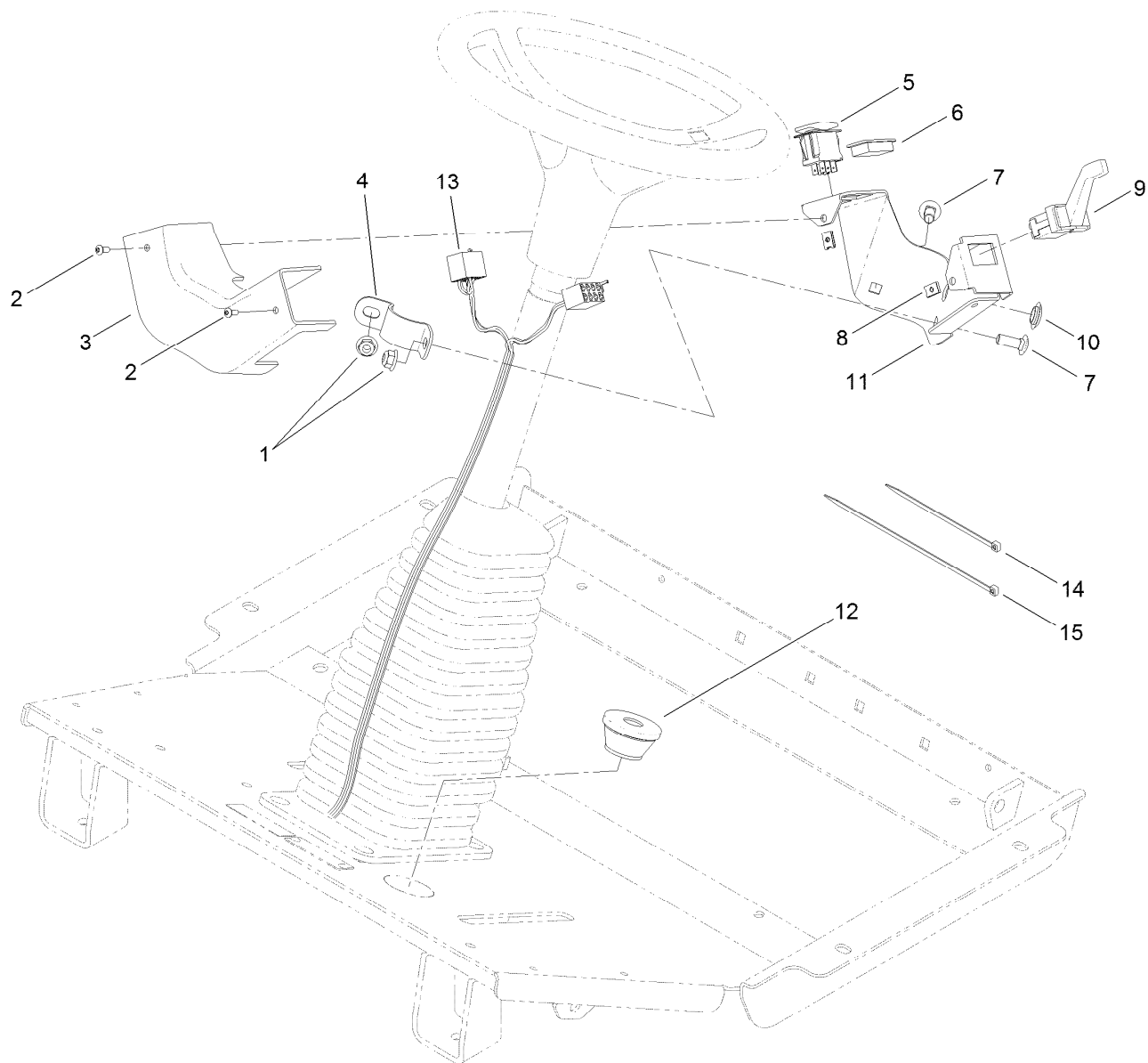
Left Hand Tail Light Assembly No. 108-8008 . . . . . 9

Right Hand Tail Light Assembly No. 108-8007 . . . . . 10



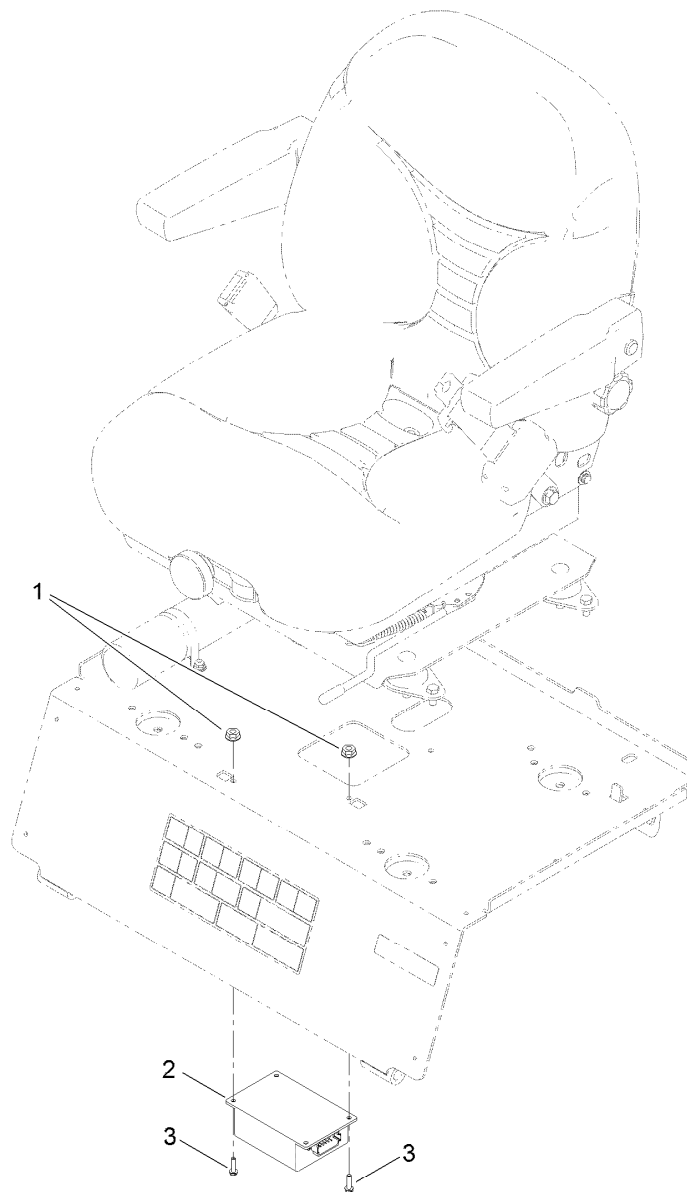
## Front Worklight Assembly

Ref.	Part Number	Qty.	Description
1	104-8301	2	Nut-Flange, NI
2	120-0397-03	2	Bracket-Headlight
3	3296-29	2	Nut-Lock, NI
4	93-3914	2	Worklight
4:1	95-0909	1	Lamp-12 Volt
4:2	92-2893	1	Lens-Clear
5	3234-19	2	Screw-HHF
6	32180-030	4	Clip-Harness



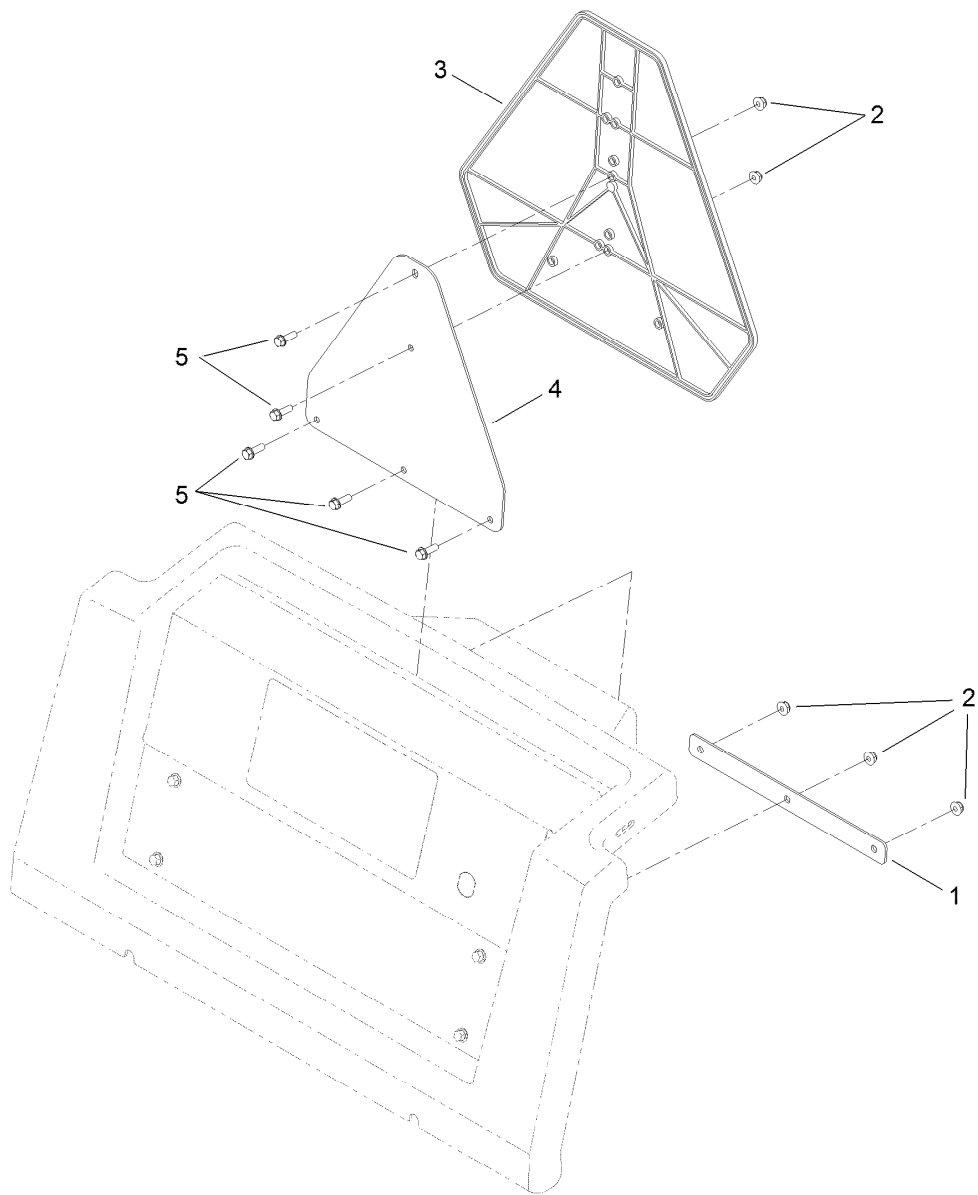
## Steering Column Cover and Switch Assembly

Ref.	Part Number	Qty.	Description
1	104-8301	2	Nut-Flange, NI
2	115-9830	2	Screw-HSBH
3	120-6655	1	Cover-Column
4	120-0336	1	Mount-Bracket, Column
5	120-0334	1	Switch-Rocker, On-Off-On
6	99-7420	1	Plug-Hole
7	3231-22	2	Screw-CARR
8	701493	2	Nut-Speed
9	120-3953	1	Switch-Paddle, On-Off-On
10	94-7290	1	Plug-Hole
11	120-0363-03	1	Bracket-Column
12	32180-033	1	Grommet
13	120-0313	1	Harness-Wire, Light Kit
14	3290-378	13	Tie-Cable
15	3290-379	2	Tie-Cable



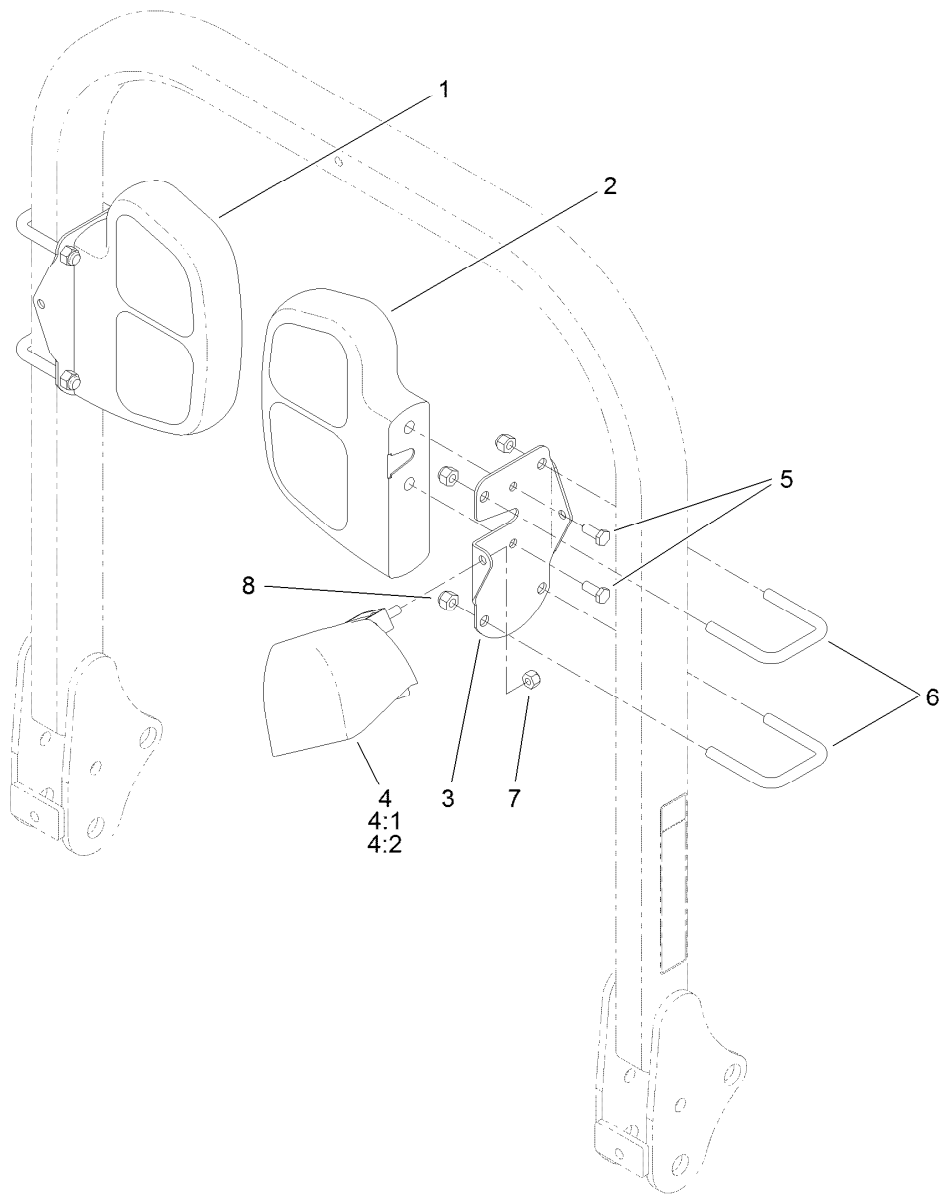
## Flasher Box Assembly

<i>Ref.</i>	<i>Part Number</i>	<i>Qty.</i>	<i>Description</i>
1	32128-17	2	Nut-Lock, Flange
2	105-4515	1	Flasher-Rate, Dual
3	32105-13	2	Screw-HWH



## Slow Moving Sign Assembly

Ref.	Part Number	Qty.	Description
1	119-9876-03	1	Bracket
2	104-7201	5	Nut-HF
3	92-7760	1	Emblem-Vehicle, Slow Moving
4	117-3181-03	1	Bracket
5	32105-15	5	Screw

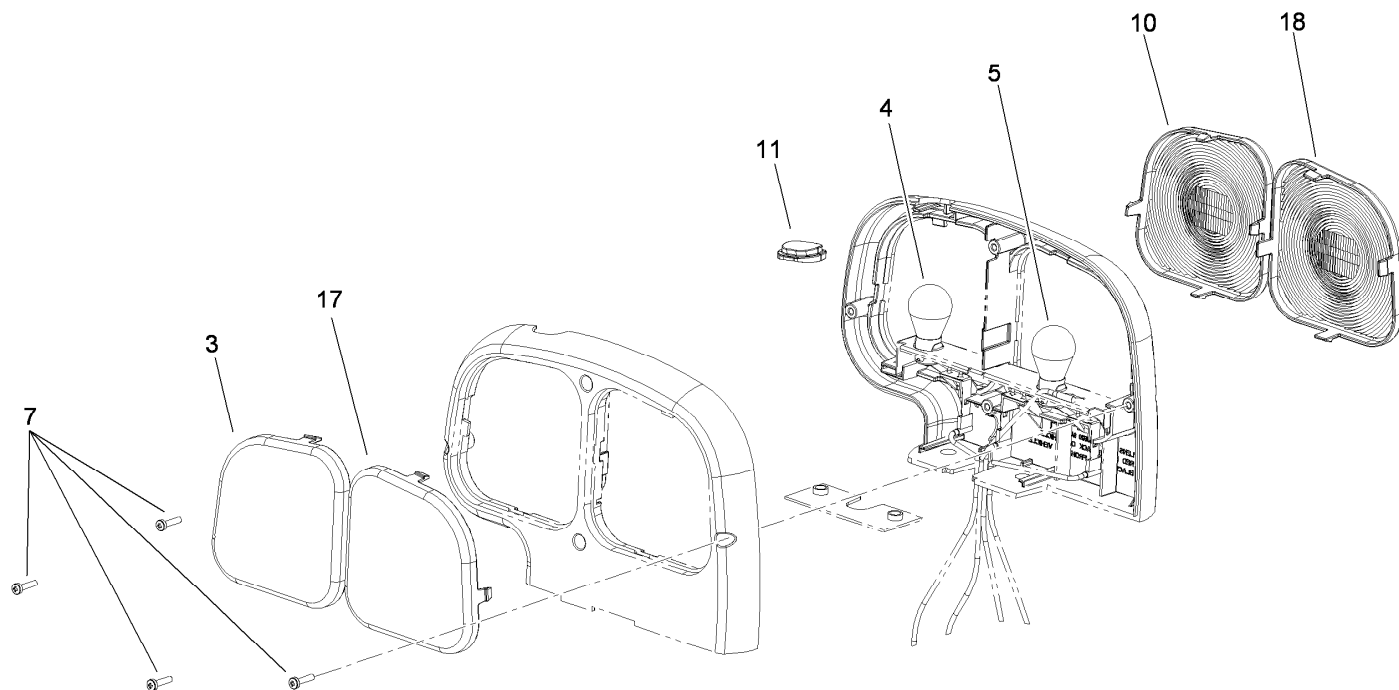


## Tail Light and Rear Worklight Assembly

Ref.	Part Number	Qty.	Description
1	108-8008	1	Tail Light Flasher ASM
2	108-8007	1	Tail Light Flasher ASM
3	110-6402-03	2	Bracket-Light
4	93-3914	1	Worklight
4:1	95-0909	1	Lamp-12 Volt ●
4:2	92-2893	1	Lens-Clear ●
5	33114-020	4	Screw-HH
6	110-6405	4	U-Bolt
7	3296-29	1	Nut-Lock, NI
8	3296-39	8	Nut-Lock, NI

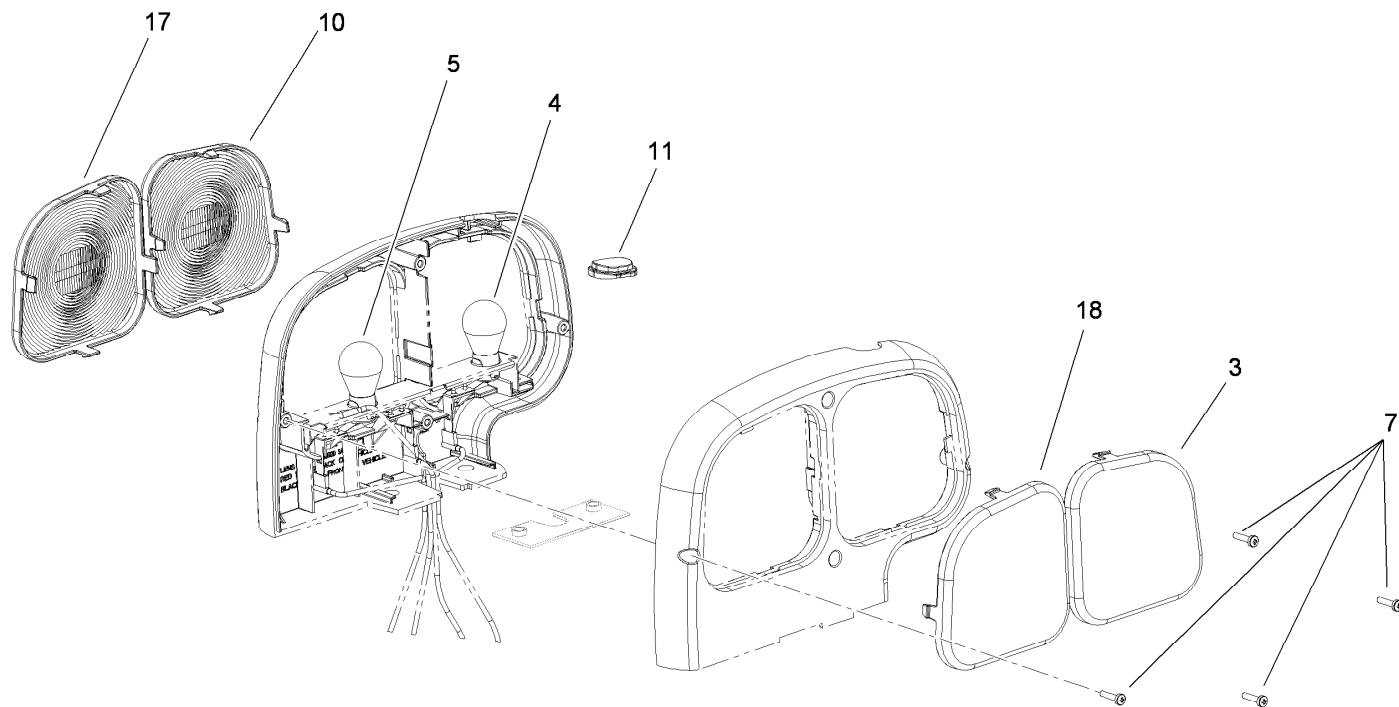
● Not illustrated





## Left Hand Tail Light Assembly No. 108-8008

Ref.	Part Number	Qty.	Description
3	108-8056	1	Lens-Amber, Base
4	7228	1	Bulb
5	108-8054	1	Bulb
7	108-8053	4	Screw
10	108-8057	1	Lens-Amber, Cover
11	108-8055	1	Lens-Amber, Window
17	108-8061	1	Lens-Red, Cover
18	108-8058	1	Lens-Black, Base



## Right Hand Tail Light Assembly No. 108-8007

Ref.	Part Number	Qty.	Description
3	108-8056	1	Lens-Amber, Base
4	7228	1	Bulb
5	108-8054	1	Bulb
7	108-8053	4	Screw
10	108-8057	1	Lens-Amber, Cover
11	108-8055	1	Lens-Amber, Window
17	108-8060	1	Lens-Red, Base
18	108-8059	1	Lens-Black, Cover

**Notes:**



**Count on it.**