



Z Master® G3 Mowers

for International Z Master® G3 Mowers

Setup Instructions

Loose Parts

Use the chart below to verify that all parts have been shipped.

Procedure	Description	Qty.	Use
1	No parts required	–	Remove parts from the crate.
2	No parts required	–	Check the tire pressure.
3	Rear wheels	2	Install the drive wheels.
4	Rollover Protection System Kit (ROPS)	1	Install the Rollover Protection System (ROPS).
5	Seat Seat plate Flange nuts (3/8 inch) Spacers (3/8 inch)	1 1 8 4	Install the seat (Models that have a fixed or non flip up seat).
6	Seat Flange nuts (3/8 inch) Long spacers (deluxe seats only) Short spacers (deluxe seats only)	1 4 2 4	Install the seat (Models that have a Tilting or Flip Up Seat).
7	No parts required	–	Check the seat belt.
8	Right control lever Left control lever Bolt (3/8 x 1 inch) (2 are assembled) Nut (3/8 inch) (2 are assembled)	1 1 4 4	Install the motion control levers.
9	Carriage bolt (3/8 x 1-1/2 inches) Flange locknut (3/8 inch)	1 1	Install the lift assist pedal.
10	Air cleaner cap Hose clamp	1 1	Install the air cleaner cap.
11	Clamp Wing nut (1/4 inch) Battery hold down	1 2 2	Install a Battery (Model numbers that end with CP only)
12	No parts required	–	Charge the battery.
13	No parts required	–	Check the engine oil level.
14	No parts required	–	Add fuel to the machine.
15	Number 2 general purpose lithium base or molybdenum base grease. (Purchase separately.)	1 tube	Check the machine for grease.
16	No parts required	–	Prepare the side discharge chute.

Procedure	Description	Qty.	Use
17	No parts required	–	Check the machine before delivery to the customer.
18	Operator's Manual Engine Owner's Manual Operator training material Key	1 1 1 2	Delivering the machine to the customer.

1

Removing Parts from the Crate

No Parts Required

Procedure

Remove the tires, the seat and the Rollover Protection System (ROPS) Kit from the shipping crate.

2

Checking the Tire Pressure

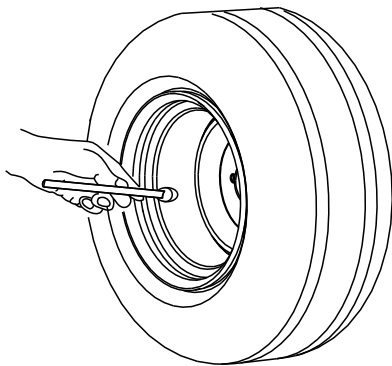
No Parts Required

Procedure

Pressure: 13 psi (90 kPa)

Note: The front caster wheel is a semi-pneumatic tire and does not need to be checked.

Check the air pressure in the drive tires.



G001055

Figure 1

3

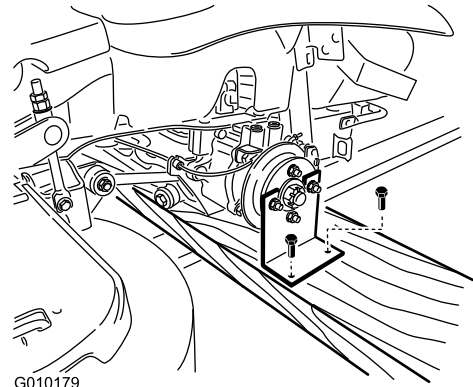
Raising the Machine Up and Installing the Drive Wheels

Parts needed for this procedure:

2	Rear wheels
---	-------------

Procedure

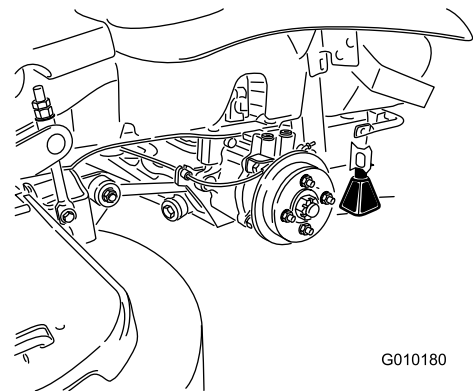
1. Remove the screws holding the right angle retaining plate to the crate.



G010179

Figure 2

2. Raise the back of the machine up and support it with jack-stands.



G010180

Figure 3

3. Remove the wheel nuts from both sides of the vehicle and remove the right angle retaining plate. Discard the screws and retaining plate.
4. Mount the wheels with the valve stem to the outside and secure them with the wheel nuts previously removed.
5. Torque the wheel nuts to 95 ft-lb (128 N·m).
6. Remove the jack-stands.

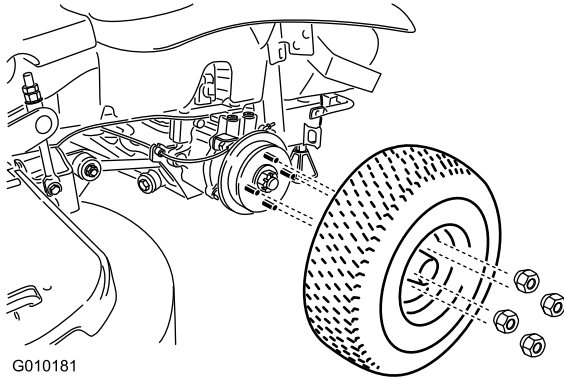


Figure 4

4

Installing the Roll Over Protection System

Parts needed for this procedure:

1	Rollover Protection System Kit (ROPS)
---	---------------------------------------

Procedure

Install the Rollover Protection System Kit. Follow the instructions included with the ROPS Kit.

5

Installing the Seat (Models that have a fixed or non flip up seat)

Parts needed for this procedure:

1	Seat
1	Seat plate
8	Flange nuts (3/8 inch)
4	Spacers (3/8 inch)

Procedure

1. Remove the hydraulic unit shroud from the machine.

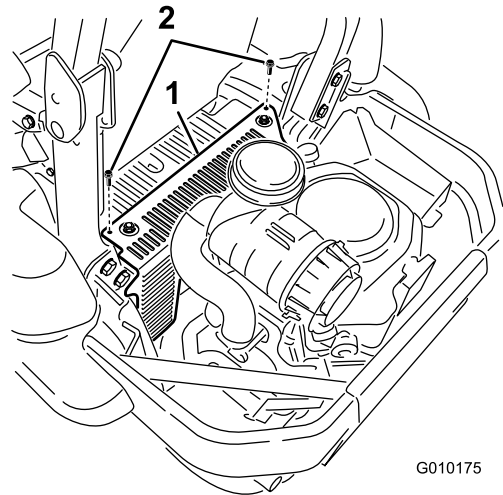


Figure 5

1. Hydraulic unit shroud
2. Bolts

2. Remove the 4 nuts holding the seat plate to the machine. Discard these nuts, they are used for shipping only.

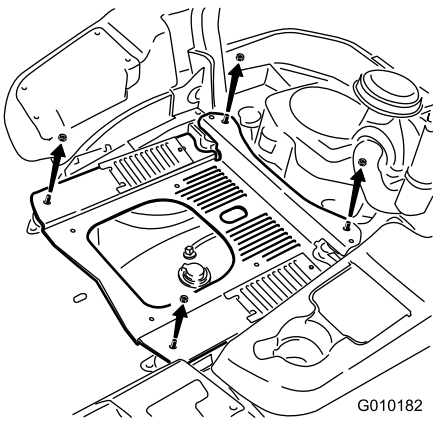


Figure 6

3. Secure the seat plate to the seat with 4 spacers and 4 flange nuts (3/8 inch).

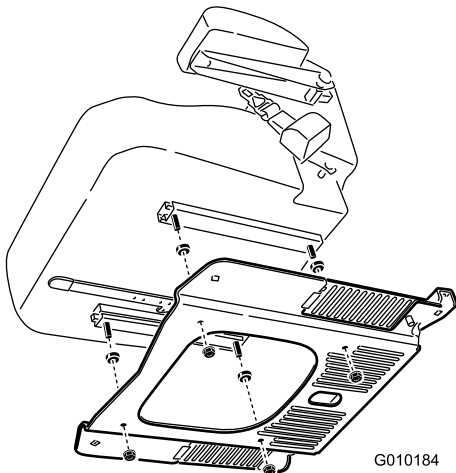


Figure 7

4. Plug the harness connector into the seat switch located under the seat towards the front.
5. Install the seat to the machine frame with 4 flange nuts (3/8 inch).

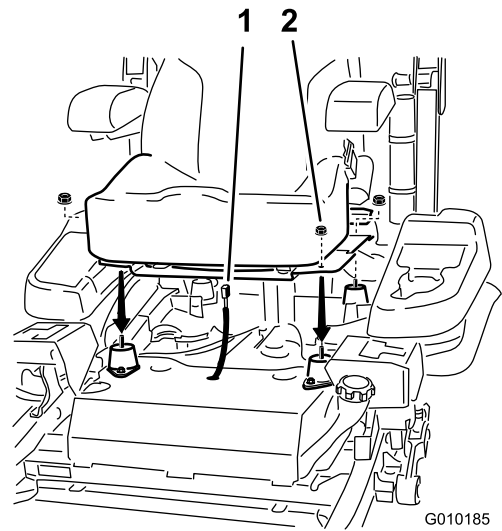


Figure 8

1. Harness connector
2. Flange nuts

6

Installing the Seat (Models that have a tilting or flip up seat)

Parts needed for this procedure:

1	Seat
4	Flange nuts (3/8 inch)
2	Long spacers (deluxe seats only)
4	Short spacers (deluxe seats only)

Procedure

1. Tilt the seat frame up.
2. For deluxe seats only, install the spacers as shown in Figure 9.

7

Checking the Seat Belt

No Parts Required

Procedure

Important: Ensure the bolt torque is set between 49 to 61 ft-lb (67 to 83 N-m).

The seat belt angle and the seat belt bolt torque need to be checked before operating.

1. Check the angle of the seat belt compared to the bottom of the seat. The angle needs to be 47 degrees. See (Figure 11)
2. If needed, set the seat belt to the correct angle.
3. Check and set the bolt torque between 49 to 61 ft-lb (67 to 83 N-m).

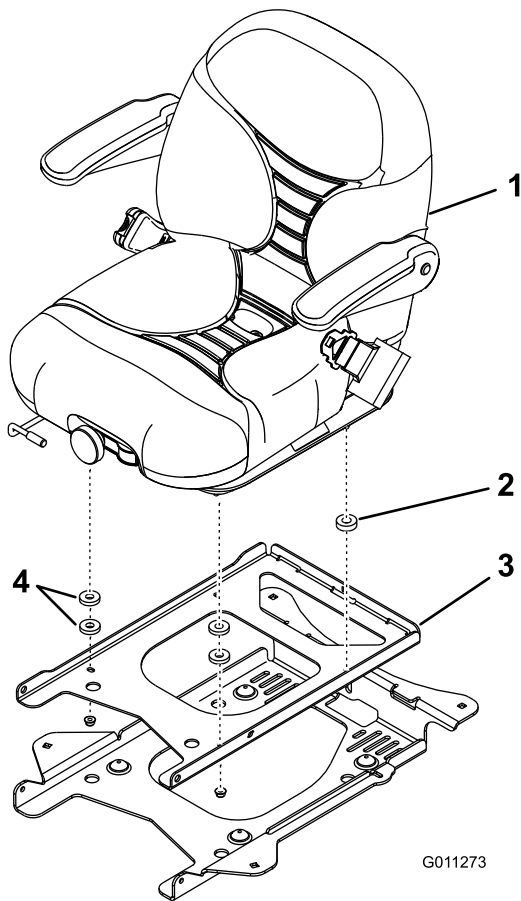


Figure 9

For mowers with a deluxe seat only

- | | |
|----------------|------------------|
| 1. Deluxe seat | 3. Seat frame |
| 2. Long spacer | 4. Short spacers |

3. Install the seat to the seat frame with 4 flange nuts (3/8 inch) (Figure 10).
4. Plug the harness connector into the seat switch located under the seat towards the front.

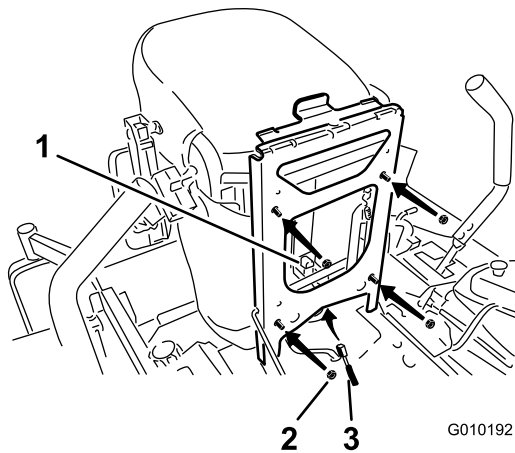


Figure 10

- | | |
|----------------|----------------------|
| 1. Seat switch | 3. Harness connector |
| 2. Flange nuts | |

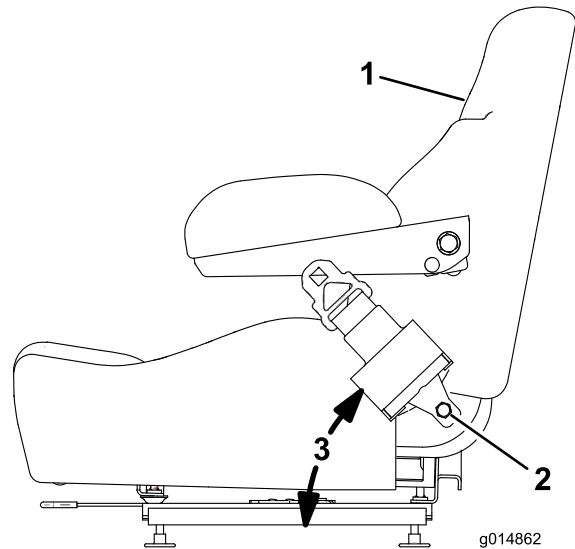


Figure 11

- | | |
|---|---------------|
| 1. Side of seat | 3. 47 degrees |
| 2. Seat belt bolt, Set torque between 49 to 61 ft-lb (67 to 83 N-m) | |

8

Installing the Motion Control Levers

Parts needed for this procedure:

1	Right control lever
1	Left control lever
4	Bolt (3/8 x 1 inch) (2 are assembled)
4	Nut (3/8 inch) (2 are assembled)

Procedure

1. Rotate the motion control levers to the upright position.
2. Loosely install the control levers on the outside of the posts, using 4 bolts and 4 nuts.

Note: Install the control levers in the top and middle holes for the high position or the middle and bottom holes for the low position, as desired.

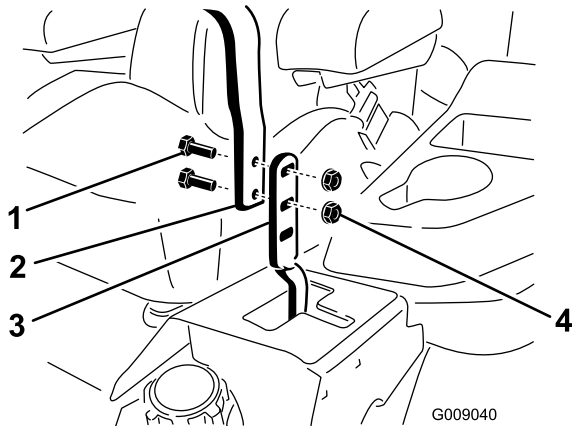


Figure 12

- | | |
|------------------------|-------------------|
| 1. Bolt (3/8 x 1 inch) | 3. Control lever |
| 2. Handle | 4. Nut (3/8 inch) |

3. Raise the levers and align them together in the neutral position and tighten the bolts.

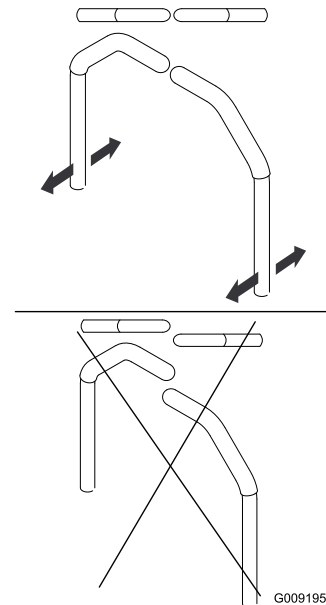


Figure 13

Note: If the machine is not properly tracking, refer to Adjusting the Tracking in your *Operator's Manual*.

9

Installing the Lift Assist Pedal

Parts needed for this procedure:

1	Carriage bolt (3/8 x 1-1/2 inches)
1	Flange locknut (3/8 inch)

Procedure

1. If needed, loosen the existing bolt and nut for the lift assist pedal.
2. Rotate the lift assist pedal to the correct position and install the carriage bolt (3/8 x 1-1/2 inches) and locknut (3/8 inch) (Figure 14). Tighten both bolts.

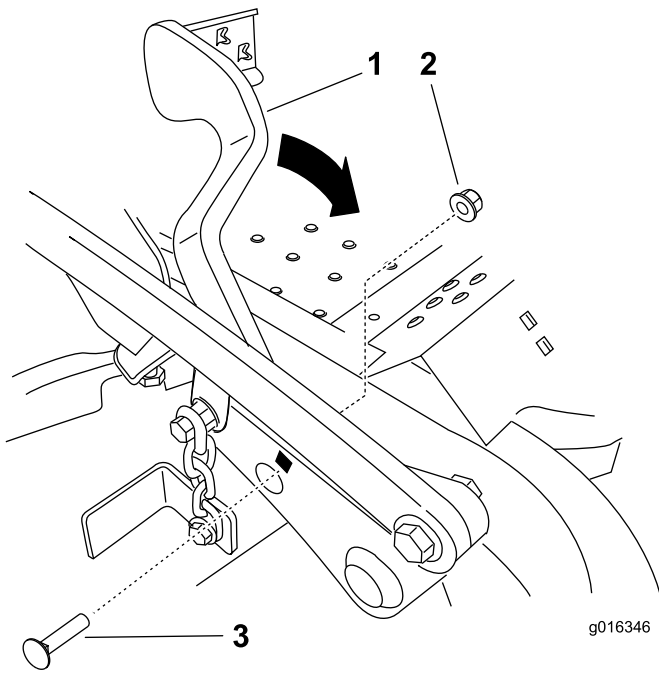


Figure 14

1. Lift assist pedal
2. Flange locknut (3/8 inch)
3. Carriage bolt (3/8 x 1-1/2 inches)

10

Installing the Air Cleaner Cap

Parts needed for this procedure:

1	Air cleaner cap
1	Hose clamp

Procedure

Note: Not all units come with a heavy duty air cleaner. This procedure only applies to models that have a heavy duty air cleaner.

1. Remove the plastic plug or tape covering the air cleaner.

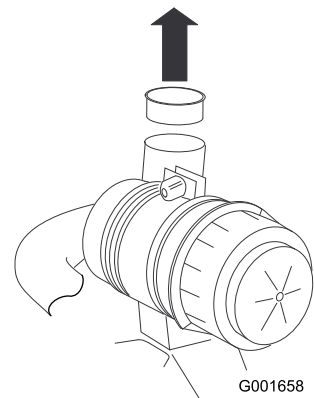


Figure 15

2. Remove the air cleaner cap from the machine.
3. Install the hose clamp onto the air cleaner cap.

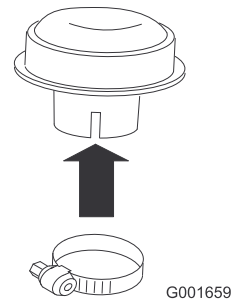


Figure 16

4. Install the air cleaner cap onto the air cleaner and secure it with the hose clamp.

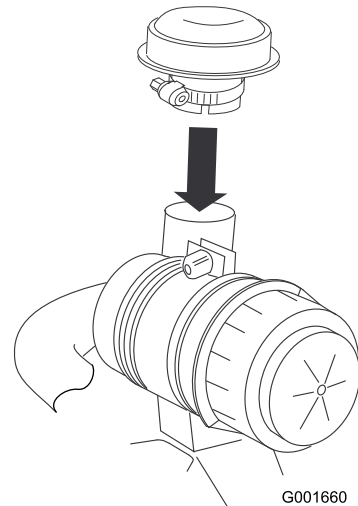


Figure 17

11

Installing a Battery (Model numbers that end with CP only)

Parts needed for this procedure:

1	Clamp
2	Wing nut (1/4 inch)
2	Battery hold down

Procedure


- Purchase a 12V battery.
Models with a 29hp engine and below require a battery with a minimum of 260 CCA.
Models with a 30hp engine and higher require a battery with a minimum of 340 CCA.
- Locate the battery mounting hardware and install it into the machine. Refer to Installing the Battery in the *Operator's Manual*.

12

Charging the Battery

No Parts Required

Procedure



Charging the battery produces gasses that can explode and cause serious injury.

- Keep cigarettes, sparks and flames away from the battery.
- Make sure the ignition switch is off.
- Ventilate when charging or using the battery in an enclosed space.

Important: Do not run the machine with the battery disconnected; electrical damage may occur to the engine.

Charge the battery. Refer to the *Operator's Manual* for instructions.

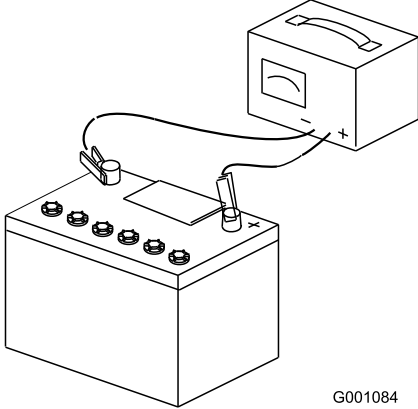


Figure 18

G001084

13

Checking the Engine Oil Level

No Parts Required

Procedure

Before you start the engine and use the machine, check the oil level in the engine crankcase; refer to Servicing the Engine Oil Level in *Operator's Manual*.

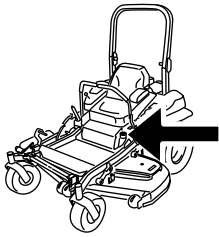
14

Adding Fuel to the Machine

No Parts Required

Procedure

Add gasoline to the machine before starting it. Refer to your *Operator's Manual* for the correct fuel and procedure.



G010171

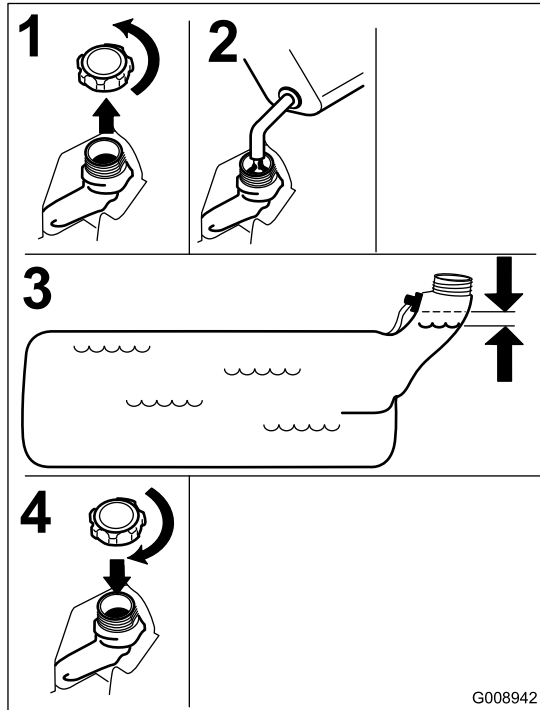
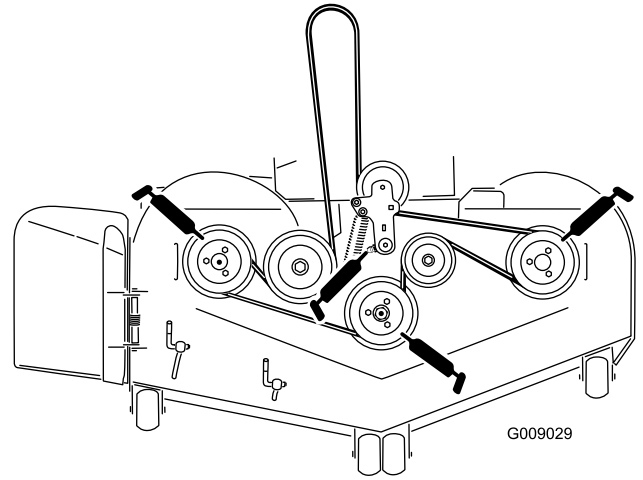


Figure 19

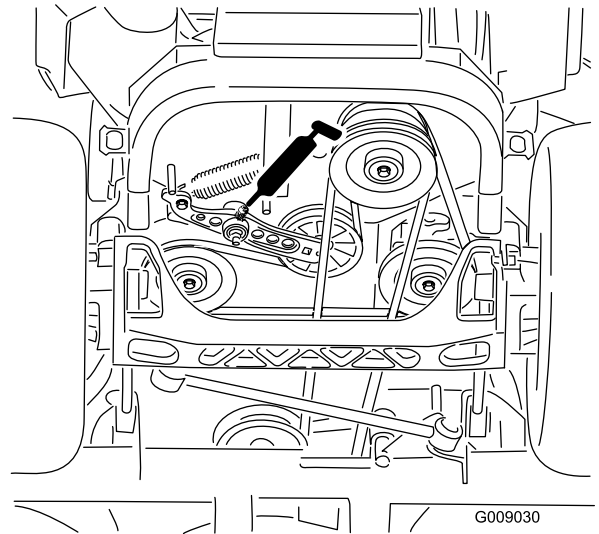
G008942



G009029

Figure 20

2. Check the grease for the pump drive belt idler arm.



G009030

Figure 21

15

Checking the Machine for Grease

Parts needed for this procedure:

1 tube	Number 2 general purpose lithium base or molybdenum base grease. (Purchase separately.)
--------	---

Procedure

1. Check the grease for the three spindle bearings and the idler pulley. If needed, add grease until it comes out of the lower seals.

16

Checking the Side Discharge Chute

No Parts Required

Procedure

If there are plastic ties holding the side discharge chute up, remove them and lower the chute into place.



An uncovered discharge opening could allow the lawn mower to throw objects in the operator's or bystander's direction and result in serious injury or death. Also, contact with the blade could occur.

Never operate the lawn mower with the grass deflector removed unless you install a cover plate, a mulch plate, or a grass chute and catcher.

1. Make sure one **J** end of the spring is installed behind the deck edge before installing the bolt as shown in Figure 22.
2. Place one **J** hook end of the spring around the grass deflector (Figure 22).

Important: The grass deflector must be free to rotate with downward tension. Lift the deflector up to the full open position and ensure that it rotates freely, without binding into the full down position.

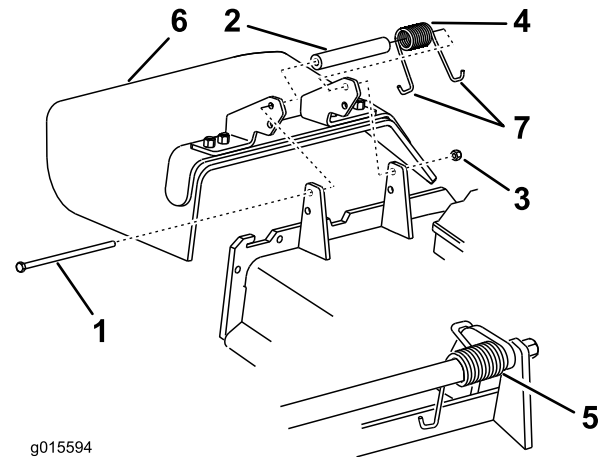


Figure 22

1. Bolt
2. Spacer
3. Locknut
4. Spring
5. Spring installed (around the grass deflector and behind the deck edge)
6. Grass Deflector
7. J hook end of spring

17

Checking the Machine Before Delivery to the Customer

No Parts Required

Procedure

Before delivering the machine to the customer, ensure that you perform or have performed the procedures listed in the following table and initial each when finished. Refer to the *Operator's Manual* for instructions on performing these procedures.

Initial	Check Procedure
	Check the tire pressure.
	Check the level of the mower.
	Check that all mower spindles are greased.
	Check the engine oil level.
	Check the hydraulic fluid level.
	Check ROPS is secure.
	On liquid cooled machines, check the level of the coolant in the radiator and overflow bottle.
	Check the adjustment of the parking brake.
	Ensure that the machine tracks correctly; refer to the <i>Operator's Manual</i> for the adjustment procedure.
	Check the safety interlock system; refer to the <i>Operator's Manual</i> .
	Ensure that the PTO works.
	Check all fasteners you installed to ensure that they are tight.

When you finish setting up the machine, sign and date in the space provided below:

Signature: _____ **Date:** _____

18

Delivering the Machine to the Customer

Parts needed for this procedure:

1	<i>Operator's Manual</i>
1	<i>Engine Owner's Manual</i>
1	Operator training material
2	Key

Procedure

At delivery, Fill in the model and serial number and complete the items listed in the following table and initial each when finished.

Model No. _____ **Serial No.** _____

Dealer Initial	Customer Initial	Check Procedure
		<p>Show the customer where the following features are located and how they function:</p> <ul style="list-style-type: none"> • Hour meter/ Safety Interlock Symbols/ Battery Indicator/ Fuel Gauge • Fuel tank cap(s) • Oil fill cap/Oil dipstick • Spark plug(s) • Engine oil filter • Engine oil drain • Fuel filter(s) • Air filter • Radiator coolant (if applicable) • Hydraulic fluid reservoir • Hydraulic filter • Battery • Ignition switch • Throttle lever • Choke (if applicable) • Power take off switch (PTO) • Motion control levers • Parking brake • Mower height-of-cut • Height-of-cut deck lift pedal/ Transport Lock • Z Stand® (if applicable) • Adjustable seat • Hydraulic bypass valves • Rollover Protection System (ROPS) • Mower deck flow baffle
		Refer to the <i>Operator's Manual</i> to point out safety procedures, operation, and maintenance procedures.
		Review the warranty statement as shown in the <i>Operator's Manual</i> .
		Describe the post sale service procedures for your store.
		Assist the customer in filling out and mailing the registration card or register online at www.Toro.com
		Make sure that the customer receives the <i>Operator's Manual</i> , <i>Engine Owner's Manual</i> , <i>Set Up Instructions</i> , and operator training material.
		Make sure the customer knows the <i>Parts Catalog</i> is available at www.Toro.com .
		Assist the customer in loading the mower.

Note: When you, the dealer representative, have finished delivering the machine to the customer, sign and date in the space provide below and keep a copy of this page for dealer records.

Signature: _____ **Date:** _____

Signature: _____ **Date:** _____

Notes:

Notes:



Count on it.