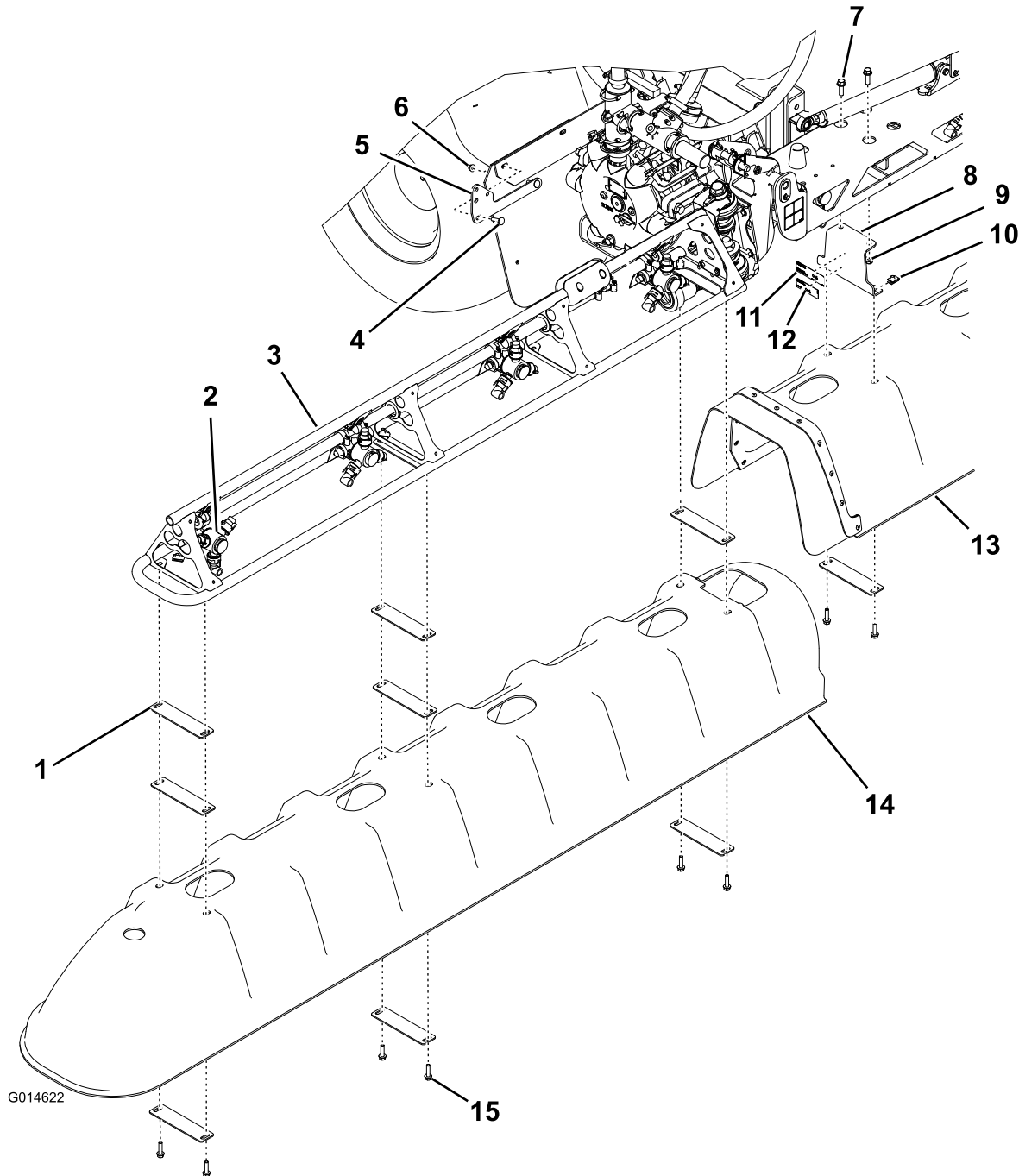


**TORO®****Covered Boom Kit****Multi-Pro® 5700/5800 Turf Sprayer with Truss-Style Boom****Model No. 41602—Serial No. 311000001 and Up****Operator Manual****Figure 1**

- |                                     |   |  |
|-------------------------------------|---|--|
| 1. Washer plate (18)                | 6. Flange nut, 5/16 inch (2)            | 11. Model/serial number decal              |
| 2. Spray nozzle (properly oriented) | 7. Hex head screw, 3/8 x 1-1/4 inch (4) | 12. Regulatory decal                       |
| 3. Wing boom (2)                    | 8. Center boom bracket (2)              | 13. Center boom cover                      |
| 4. Carriage screw (2)               | 9. Flange nut, 3/8 inch (4)             | 14. Wing boom cover (2)                    |
| 5. Drain valve mount bracket        | 10. U-nut (16)                          | 15. Hex head screw, 5/16 x 1-1/4 inch (16) |

## Loose Parts

Use the chart below to verify that all parts have been shipped.

Procedure	Description	Qty.	Use
<b>1</b>	Center boom bracket	2	Install the center boom brackets and cover.
	U-nut	4	
	Hex head screw, 3/8 x 1-1/4 inch	2	
	Model/serial number decal	1	
	Regulatory decal (119-4986)	1	
	Flange nut (3/8 inch)	2	
	Washer plate	2	
	Hex head screw, 5/16 x 1-1/4 inch	4	
<b>2</b>	Wing boom cover	2	Install the wing boom covers.
	Washer plate	16	
	U-nut	12	
	Hex head screw, 5/16 x 1-1/4 inch	12	
<b>3</b>	Drain valve mount bracket	1	Install the drain valve mount bracket.
	Carriage screw (3/8 x 1-1/4 inch)	2	
	Flange nut (5/16 inch)	2	
<b>4</b>	No parts required	–	Check that the boom covers have proper clearance.

**Important:** Air induction Flat Fan nozzles (AIC TeeJet) are recommended for use with the covered boom kit to avoid chemical buildup on the covers during application. Refer to Toro's nozzle chart for details.

**Note:** The Spring Upgrade Kit, Part No. 120-8508 should be installed with the Covered Boom.

# 1

## Install the Center Boom Brackets and Cover

### Parts needed for this procedure:

2	Center boom bracket
4	U-nut
2	Hex head screw, 3/8 x 1-1/4 inch
1	Model/serial number decal
1	Regulatory decal (119-4986)
2	Flange nut (3/8 inch)
2	Washer plate
4	Hex head screw, 5/16 x 1-1/4 inch

## Procedure

1. Attach the model/serial number decal and the regulatory decal to one of the center boom brackets as shown in Figure 1.

**Note:** Before applying the decals, clean the decal area and ensure that it is free of dirt, grease, or other foreign material.

2. Install each of the 2 center brackets to the center boom using 2 hex head screws (3/8 x 1-1/4 inch) and 2 flange nuts (3/8 inch) as shown in Figure 1.
3. Install the center cover assembly to the center boom brackets using 4 U-nuts 2 washer plates, and 4 hex head screws (5/16 x 1-1/4 inch) as shown in Figure 1.

# 2

## Install the Wing Boom Covers

### Parts needed for this procedure:

2	Wing boom cover
16	Washer plate
12	U-nut
12	Hex head screw, 5/16 x 1-1/4 inch

### Procedure

1. Orient the spray nozzles on both wing booms straight downward so that it can fit in the holes of the wing boom covers.
2. Install one of the wing boom covers (Figure 1) using 8 washer plates, 6 hex head screws (5/16 x 1-1/4 inch), and 6 U-nuts.
3. Repeat step 2 to install the other wing boom cover.

# 3

## Installing the Drain Valve Mount Bracket

### Parts needed for this procedure:

1	Drain valve mount bracket
2	Carriage screw (3/8 x 1-1/4 inch)
2	Flange nut (5/16 inch)

### Procedure

1. Install the drain valve mount bracket onto the machine with 2 carriage screws and 2 flange nuts (5/16 inch) as shown in Figure 1.
2. Move the drain valve from its existing position and install it onto the mounting bracket (Figure 1) using the existing lynch pin and lanyard.

# 4

## Checking the Clearance of the Boom Covers

### No Parts Required

### Procedure

Verify that the center boom cover and the wing boom covers do not bind when the booms are lowered, and adjust the covers as needed.



**Count on it.**