



Count on it.

Parts Catalog

**Commercial Walk-Behind
Traction Unit**

18HP Pistol-Grip Hydro Drive

Model No. 30069—Serial No. 311000001 and Up

Ordering Replacement Parts

To order replacement parts, please supply the part number, the quantity, and the description of each part desired.

Understanding Reference Numbers

Each identified part in an illustration has a reference number. The reference number for a part also appears in the parts list, along with other information about the part.

This catalog uses two special reference number formats, one to indicate parts in a service assembly and another to indicate the quantity of a given part in an illustration.

Service Assembly Reference Numbers

Parts in service assemblies have reference numbers in the form a:b. The a represents the reference number of the entire service assembly and the b represents a sequential number unique to each part within the service assembly.

For example, a wheel assembly might be identified by reference number 6, the tire by 6:1, the valve by 6:2, and the wheel by 6:3. When you order the assembly identified by reference number 6, you receive all parts identified by reference numbers 6:1, 6:2, and 6:3. However, you may also order any part individually. Reference numbers of this type appear in illustration and in parts lists.

Reference Numbers Indicating Quantity

In an illustration, if a reference number indicates more than one part, the reference number has the form nX y. The n represents the quantity of the part, the X is the multiplication symbol, and the y represents the reference number.

For example, in an illustration, the reference number 2X 37 means that two of the parts identified by reference number 37 are indicated.

List of Abbreviations

AR: as required

ASM: assembly

BBC: blade brake control

BHTF: button head thread forming

CARR: carriage

CCW: counter clockwise

CW: clockwise

DEG: degrees

DPA: Dual Point Adjustment

ECM: electronic control module

EXT: external

FH: flat head

GA: gauge

HD: heavy-duty

HF: hex flange

HH: hex head

HHF: hex head flange

HHFTF: hex head flange thread forming

HJ: hex jam

HLH: hex lag head

HOC: height-of-cut

HSBH: hex socket button head

HSFH: hex socket flat head

HSH: hex socket head

HWH: hex washer head

HWTF: hex washer head thread forming

HYD: hydraulic

LH: left hand

LP: Liquid Propane

NI: nylon insert

NPTF: national pipe thread fine

PFH: phillips flat head

PPH: phillips pan head

PPHTF: phillips pan head thread forming

PRH: phillips round head

PTH: phillips truss head

PTO: power-take-off

RH: right hand

ROPS: roll-over protection system

RRB: rear roller brush

SFH: slotted fillister head

SHH: slotted hex head

SHWH: slotted hex washer head

SPH: slotted pan head

SQH: square head

SRH: slotted round head

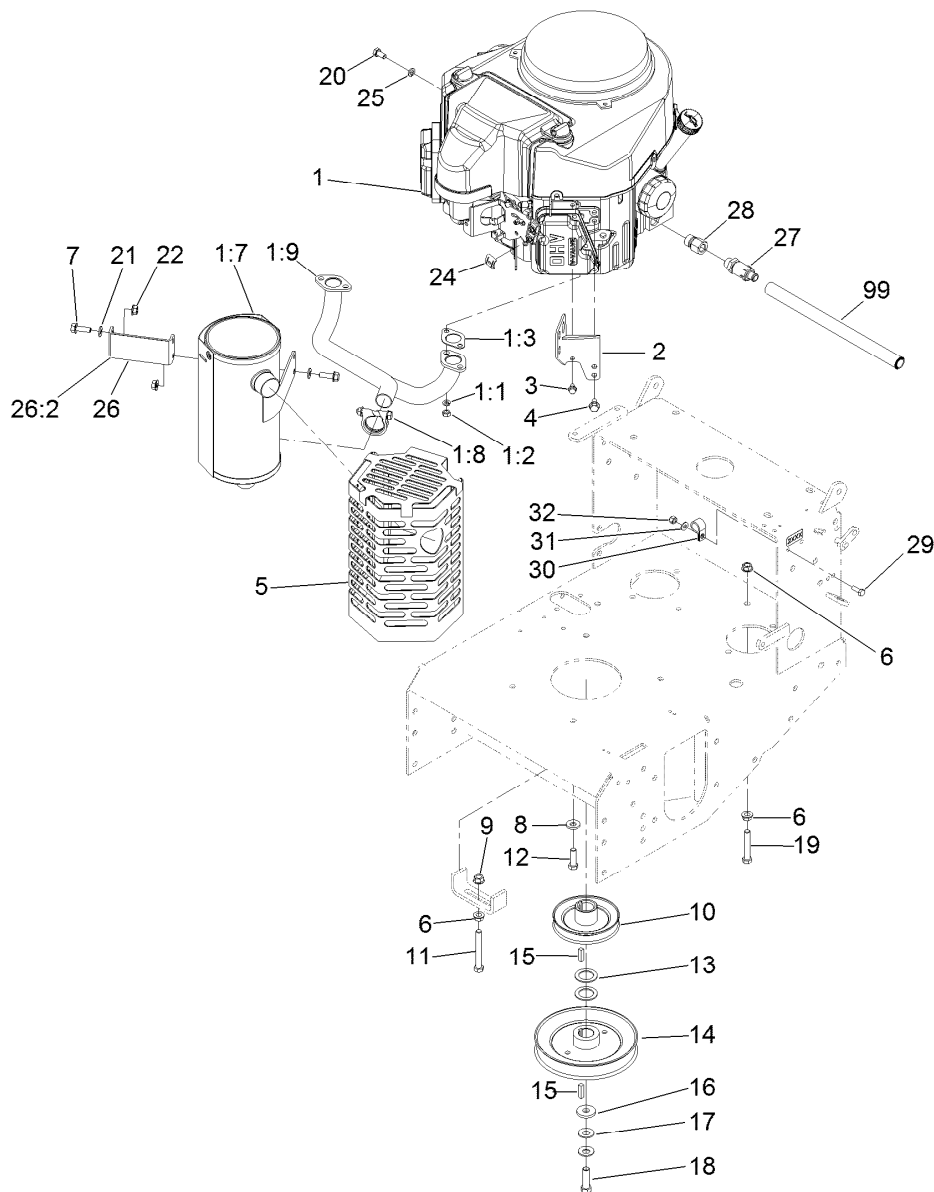
STD: standard

TAP: self tapping

TTH: torx truss head

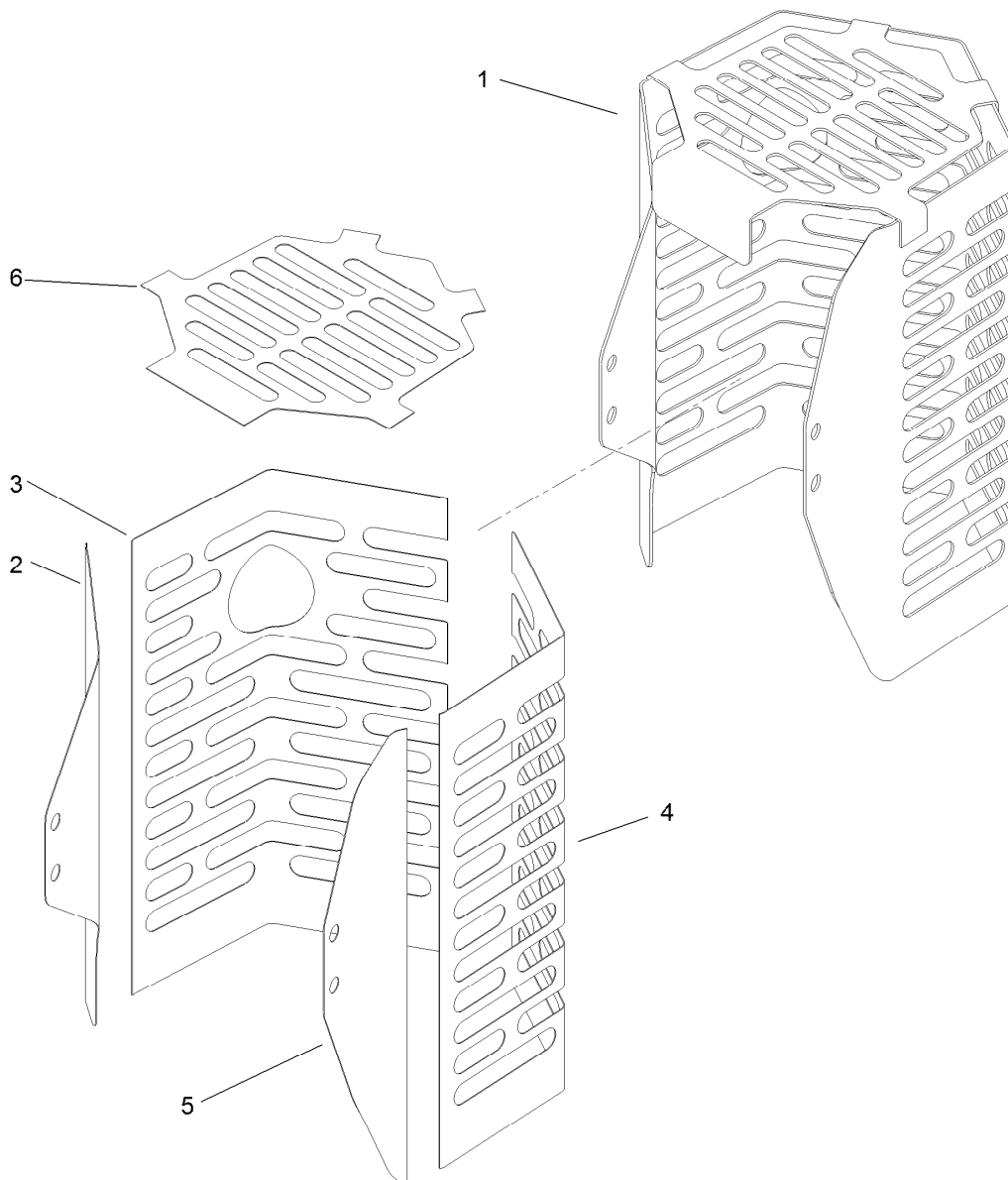
Contents

Engine, Clutch and Muffler Assembly	4
Muffler Shield Assembly No. 120-3238	5
Fuel Tank Assembly	6
Rear Wheel and Hydraulic Drive Assembly	7
Hydraulic Wheel Motor Assembly No. 1-603718	8
LH Hydraulic Pump Assembly No. 116-0942	9
RH Hydraulic Pump Assembly No. 116-0943	10
Parking Brake Assembly	11
Frame and Linkage Assembly	12
Hydraulic System Assembly	13
Control Linkage Assembly	14
Control Handle Assembly	16
Handle Decal Assembly	17
Drive Control Assembly	18
Electrical Assembly	19
Attachments and Accessories	20



Engine, Clutch and Muffler Assembly

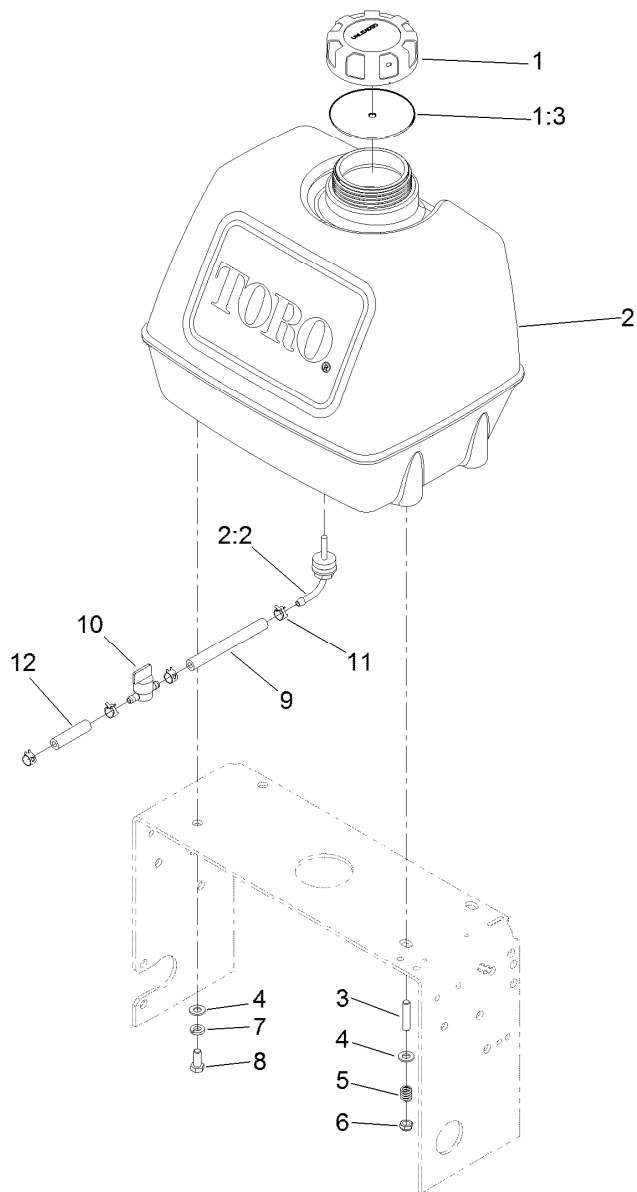
Ref.	Part Number	Qty.	Description	Ref.	Part Number	Qty.	Description
1		1	Engine-Kawasaki, Fs541V-Bs10 ■▲	14	110-4891	1	Pulley ASM
1:1	114-3550	4	Washer-Lock, Spring	15	1-807259	2	Key
1:2	114-3549	4	Nut	16	1-373034	1	Washer
1:3	1-653313	2	Gasket-Exhaust	17	1-603610	2	Washer-Spring
1:7	119-7800	1	Muffer-Kaw	18	116-3702	1	Screw-HH
1:8	119-7801	1	Clamp-Muffer, Kaw	19	323-11	1	Screw-HH
1:9	119-7802	1	Manifold-Kaw	20	33114-016	1	Screw-HH
2	117-8561-03	1	Bracket-Muffer	21	1-303334	4	Washer-Spring
3	33103-012	1	Screw-HHF	22	117-1350	4	Nut-HF, Lock
4	33104-016	2	Screw-HHF	24	81-1690	1	Clamp-Cable
5	120-3238	1	Muffer Shield ASM	25	3253-4	1	Washer-Lock
6	3290-357	11	Nut-HHF, Whiz	26	120-3245	1	Muffer Bracket ASM
7	33104-025	4	Screw-HHF	26:2	120-3244	1	Foil-Shield, Bracket
8	98-5975	12	Washer-Belleville	27	92-6877	1	Valve-Drain, Oil
9	32128-21	1	Nut-HF	28	103-1966	1	Adapter
10	1-653035	1	Pulley	29	321-4	1	Screw-HH
11	323-14	1	Screw-HH	30	2412-87	1	Clamp-Cable
12	323-7	4	Screw-HH	31	3256-22	1	Washer-Flat
13	1-523157	2	Washer-Spacer	32	3296-42	1	Nut-Lock, NI
● Optional Equipment				99	103-1964	1	Hose-Drain, Oil ●
▲ Obtain parts from www.kawpowerepc.com				■ Not serviced separately			



Muffler Shield Assembly No. 120-3238

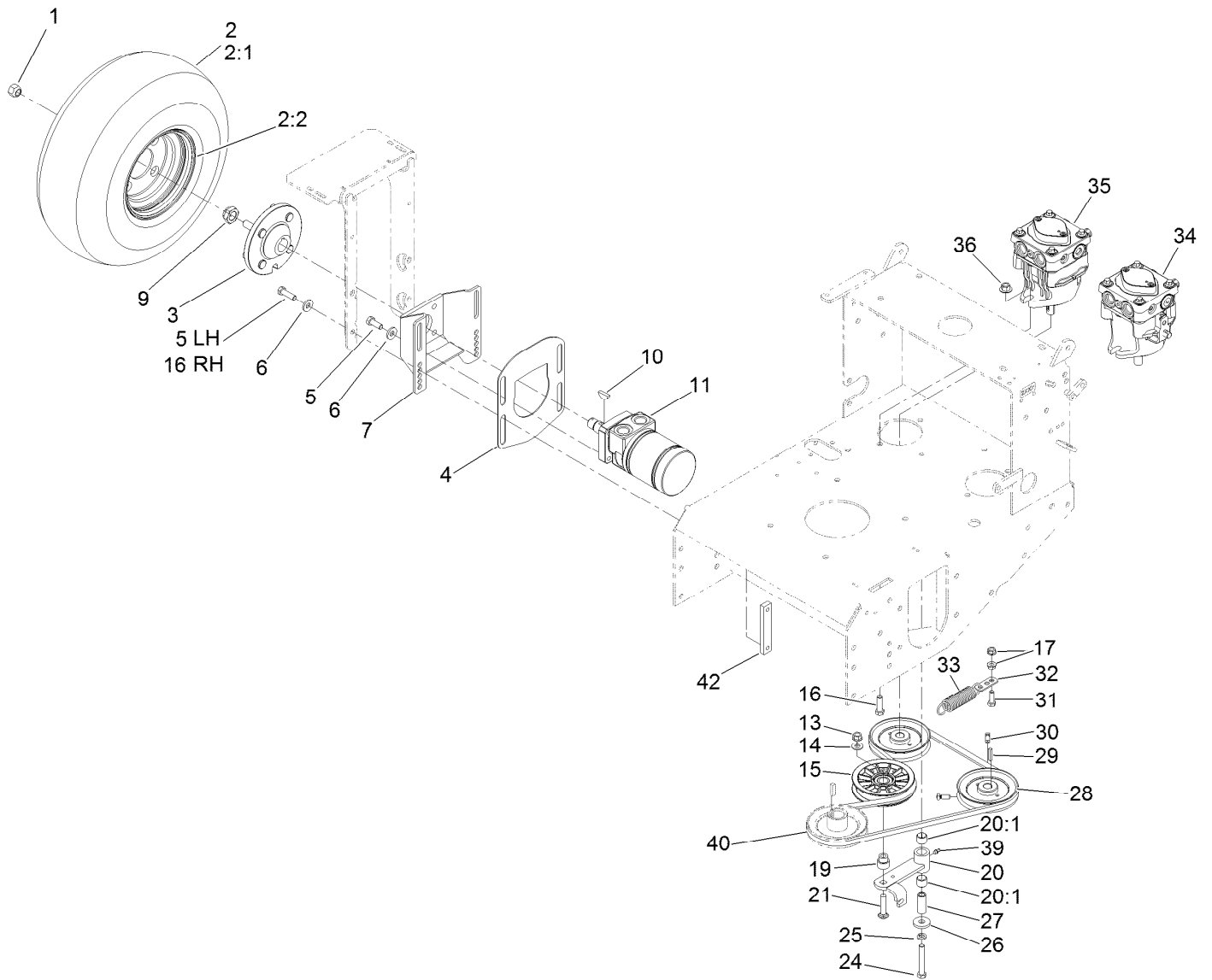
<i>Ref.</i>	<i>Part Number</i>	<i>Qty.</i>	<i>Description</i>
1		1	Muffler Shield ASM ●
2	120-3239	1	Foil-Shield, Left
3	120-3240	1	Foil-Shield, Side
4	120-3241	1	Foil-Shield, Front
5	120-3242	1	Foil-Shield, Right
6	120-3243	1	Foil-Shield, Top

● Not serviced separately



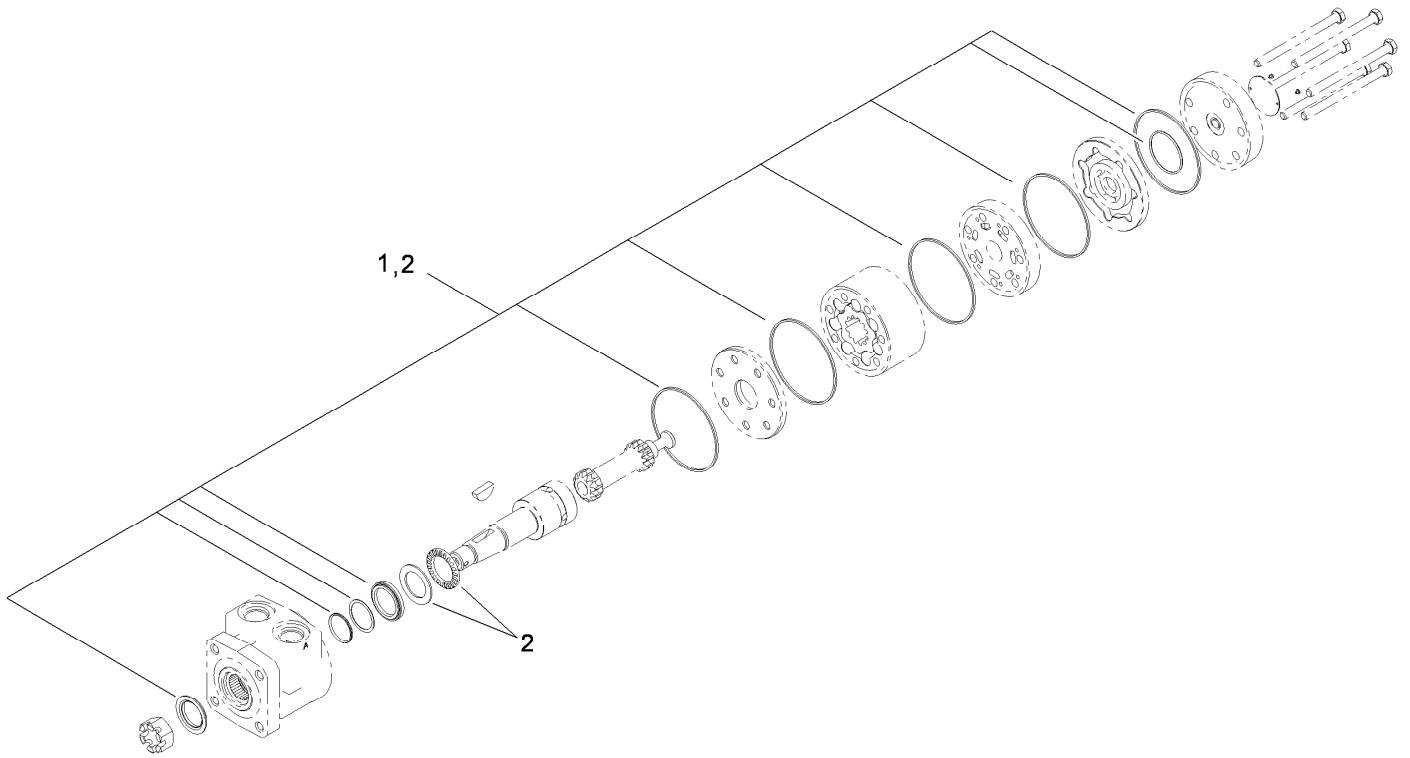
Fuel Tank Assembly

Ref.	Part Number	Qty.	Description
1	88-3980	1	Gas Cap ASM
1:3	88-4010	1	Gasket-Cap, Gas
2	106-0730	1	Fuel Tank ASM
2:2	103-2605	1	Fitting-Fuel, Bulkhead
3	1-633023	2	Stud
4	3256-23	4	Washer-Flat
5	1-633349	2	Spring-Tank, Fuel
6	3296-47	2	Nut-Lock, NI
7	1-805005	2	Washer-Lock
8	322-3	2	Screw-HH
9	109-0650	1	Hose-Fuel
10	1-603770	1	Valve-Fuel
11	2412-98	5	Clamp
12	99-9415	1	Hose-Fuel



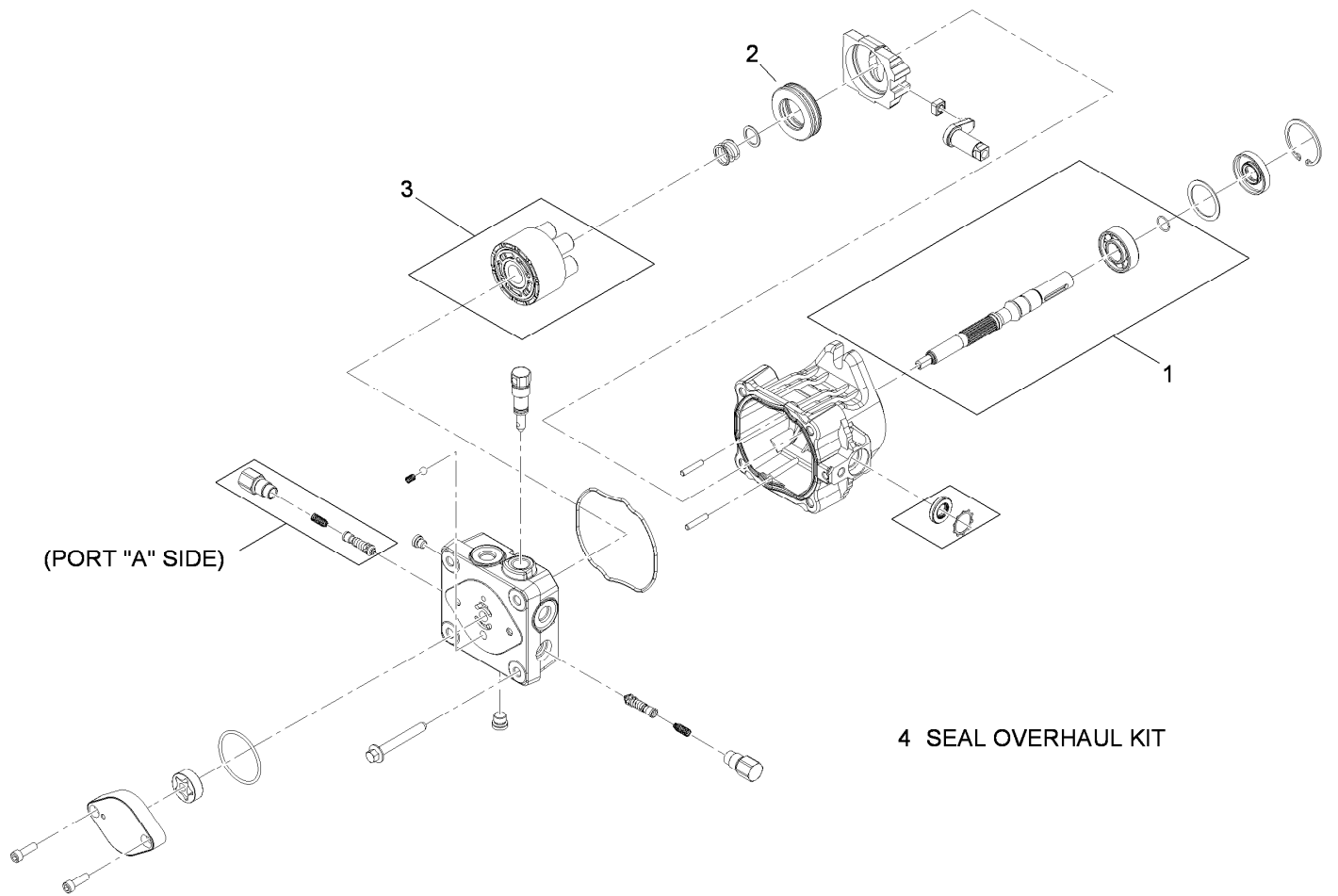
Rear Wheel and Hydraulic Drive Assembly

Ref.	Part Number	Qty.	Description	Ref.	Part Number	Qty.	Description
1	242-50	8	Nut-Lug	20:1	103-4681	2	Sleeve-Bearing
2	1-413473	2	Wheel And Tire ASM	21	3231-29	1	Screw-CARR
2:1	1-413474	1	Tire-Turfmaster	24	323-12	1	Screw-HH
2:2	1-603715	1	Wheel-Rim	25	3253-21	1	Washer-Lock
3	112-9049	2	Wheel Hub ASM	26	1-373034	1	Washer
4	115-3805-01	2	Guard-Debris	27	1-603044	1	Bushing
5	323-6	12	Screw-HH	28	1-413010	2	Sheave ASM
6	98-5975	16	Washer-Belleville	29	1-807272	2	Key
7	103-2289-01	2	Mount-Motor	30	1-803050	4	Screw-Set
9	116-2839	2	Nut-Lock	31	322-5	1	Screw-HH
10	1-807019	2	Key-Woodruff	32	1-603801	1	Anchor-Spring
11	1-603718	2	HYD Motor ASM	33	1-603402	1	Spring-Extension
13	32128-21	1	Nut-HF	34	116-0942	1	LH HYD Pump ASM
14	3256-24	1	Washer-Flat	35	116-0943	1	RH HYD Pump ASM
15	109-4077	1	Pulley-Idler, Flat	36	32128-43	4	Nut-Flange
16	323-7	4	Screw-HH	39	302-19	1	Fitting-Grease
17	32128-20	2	Nut-HF	40	106-2740	1	V-Belt
19	1-603496	1	Bushing-Idler	42	115-1023	4	Bar-Nut
20	1-602521	1	Idler Arm ASM				



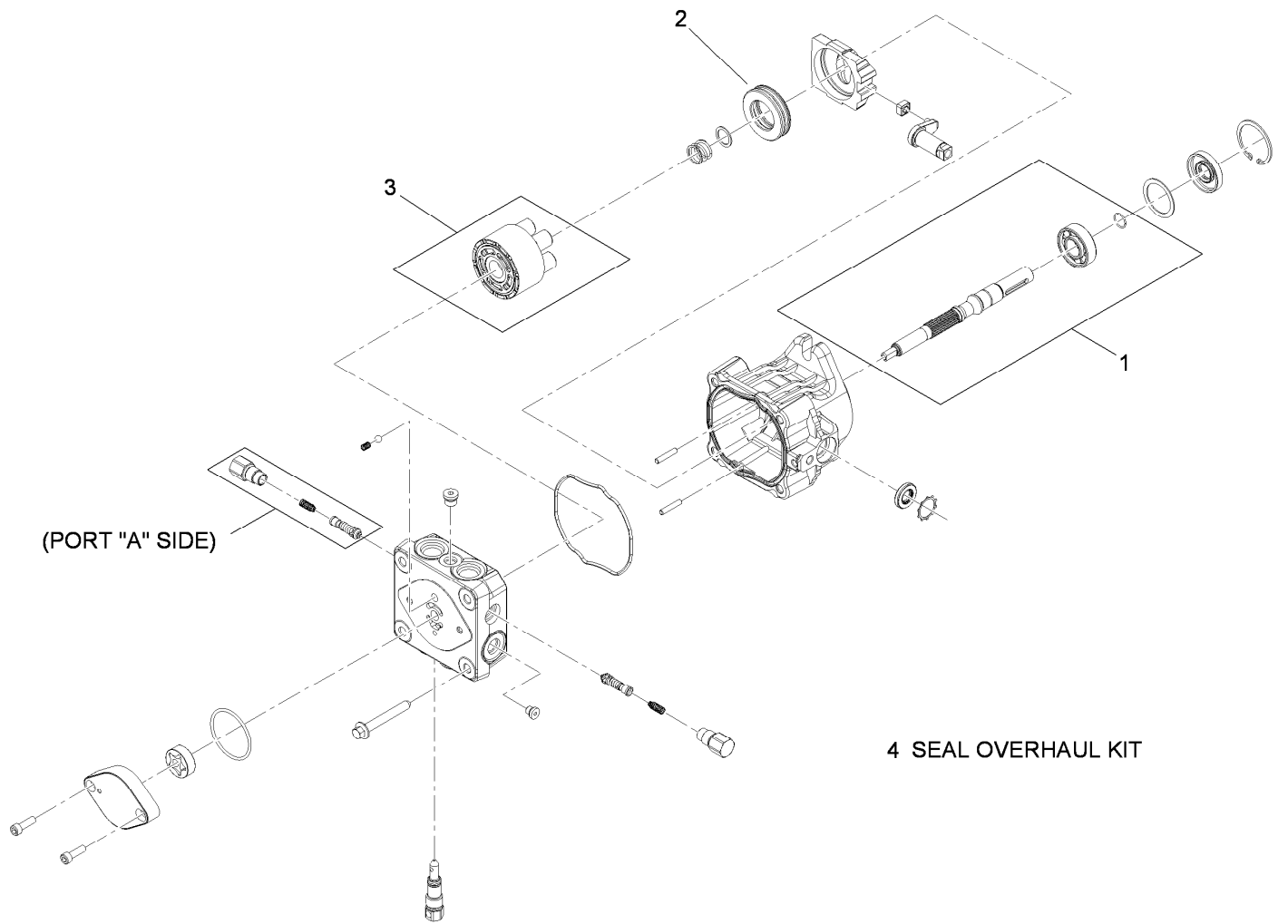
Hydraulic Wheel Motor Assembly No. 1-603718

<i>Ref.</i>	<i>Part Number</i>	<i>Qty.</i>	<i>Description</i>
1	1-000119	1	Seal Kit
2	1-000138	1	Bearing And Seal Kit



LH Hydraulic Pump Assembly No. 116-0942

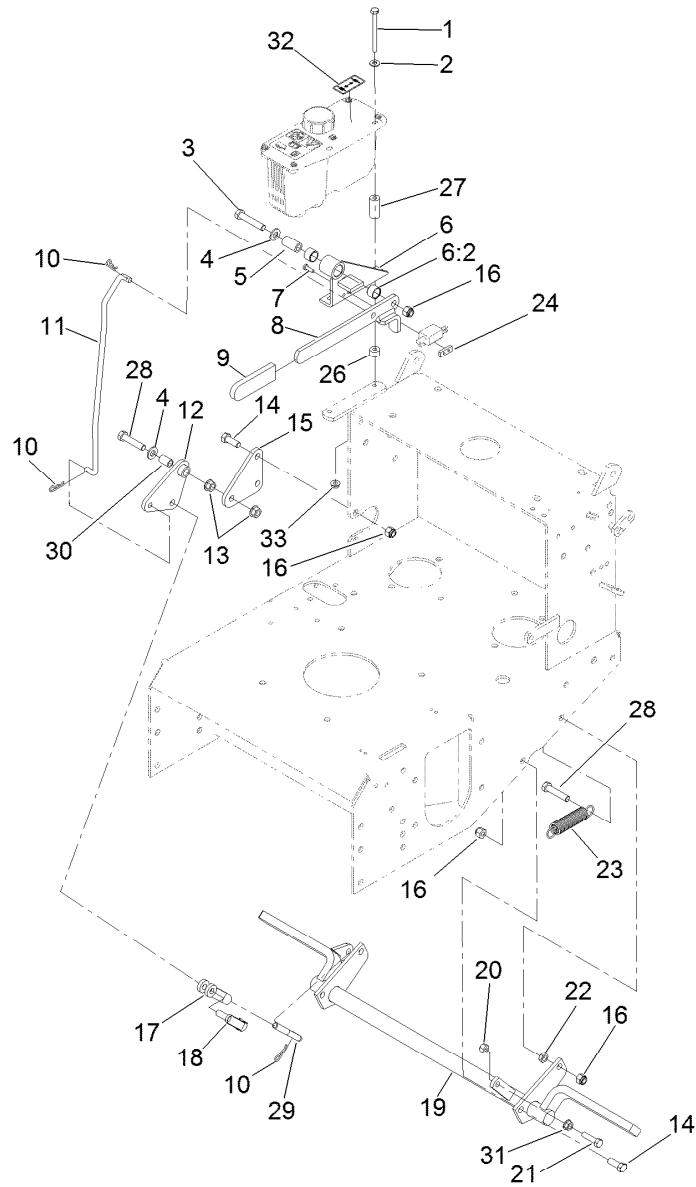
<i>Ref.</i>	<i>Part Number</i>	<i>Qty.</i>	<i>Description</i>
1	103-2664	1	Input Shaft Kit
2	94-6922	1	Bearing-Thrust
3	103-2666	1	Cylinder Block Kit
4	105-6184	1	Seal Overhaul Kit



4 SEAL OVERHAUL KIT

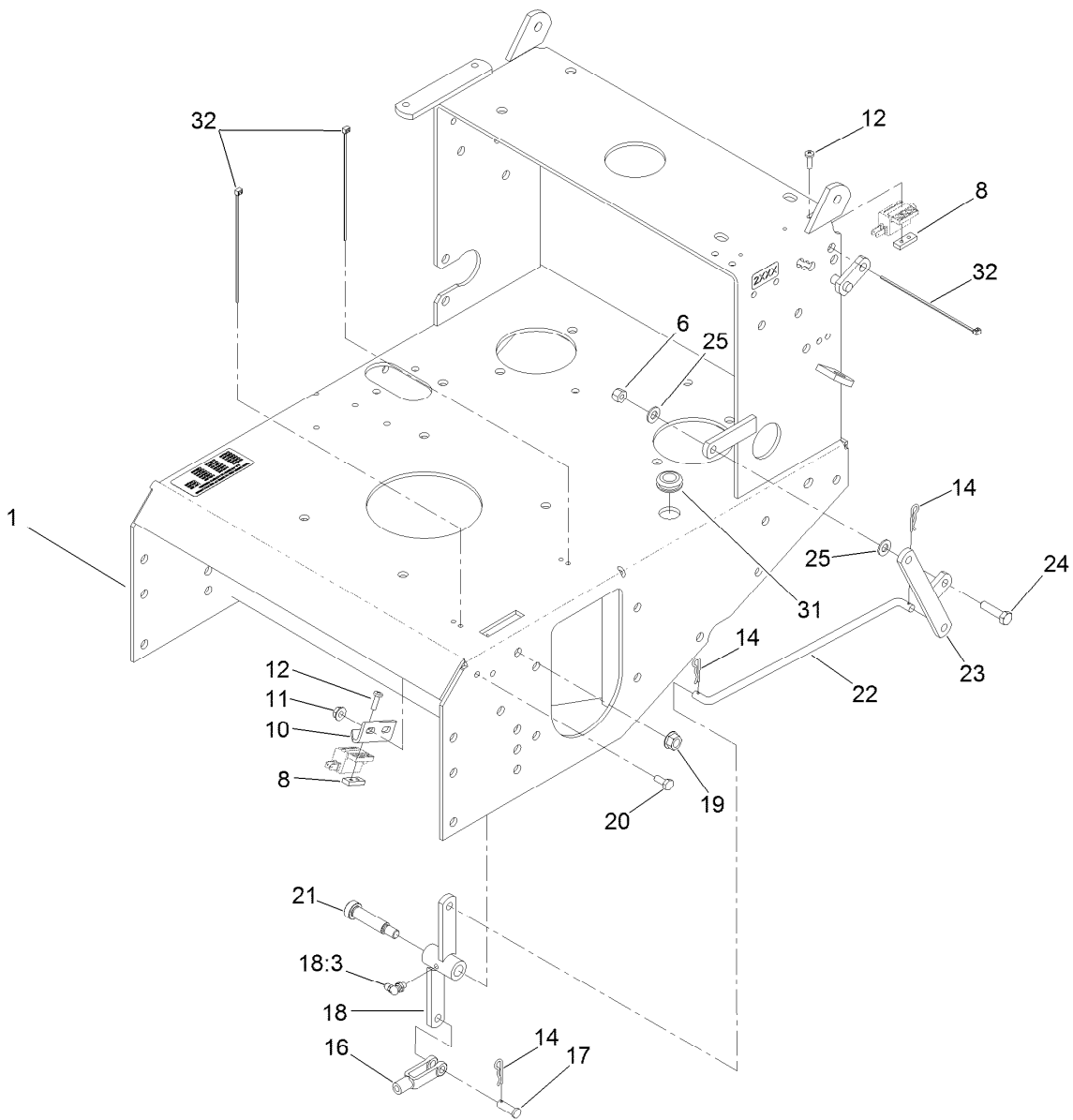
RH Hydraulic Pump Assembly No. 116-0943

<i>Ref.</i>	<i>Part Number</i>	<i>Qty.</i>	<i>Description</i>
1	103-2664	1	Input Shaft Kit
2	94-6922	1	Bearing-Thrust
3	103-2666	1	Cylinder Block Kit
4	105-6184	1	Seal Overhaul Kit



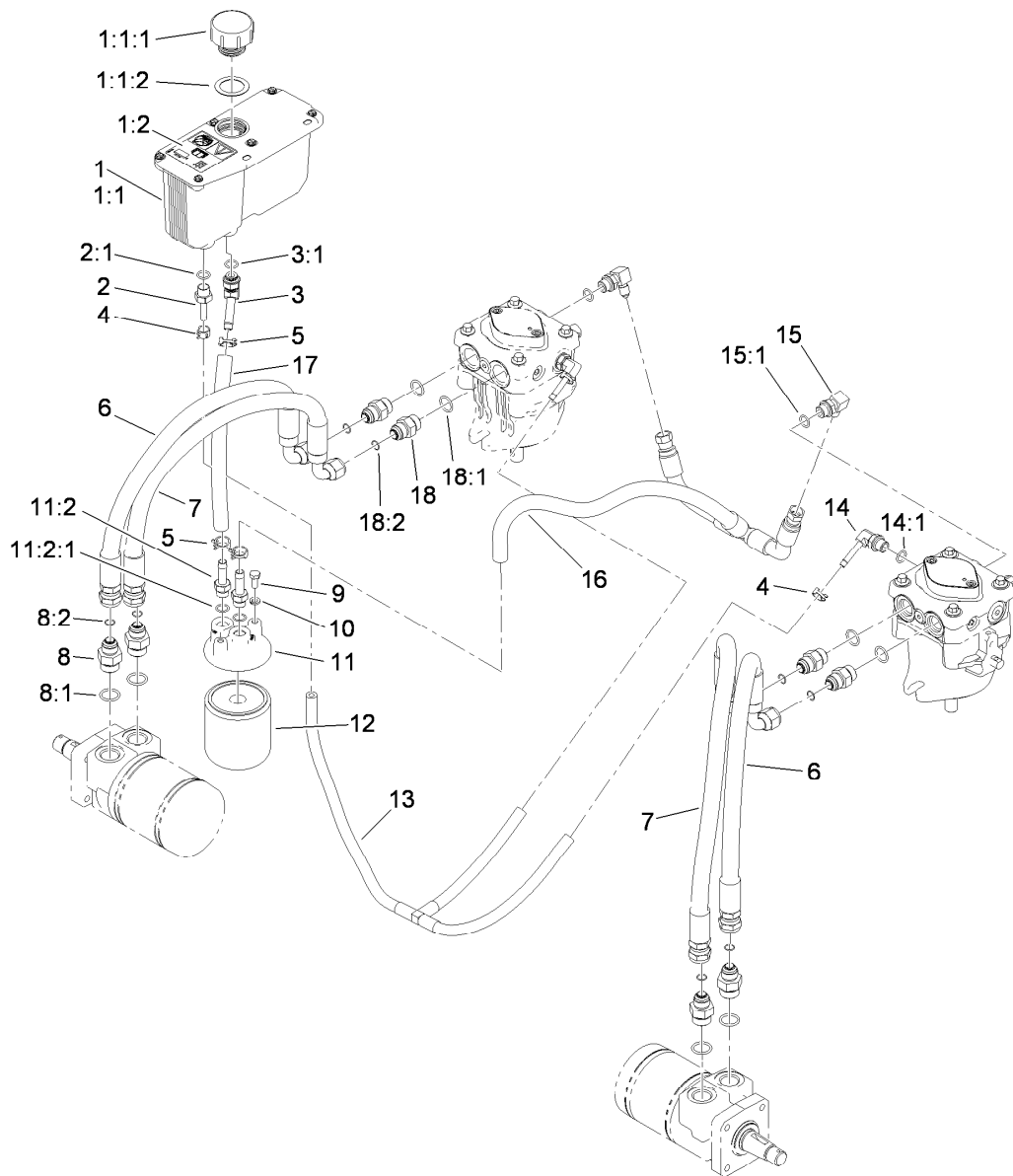
Parking Brake Assembly

Ref.	Part Number	Qty.	Description	Ref.	Part Number	Qty.	Description
1	321-23	2	Screw-HH	17	1-633131	1	Yoke-Linkage, Brake
2	3256-22	2	Washer-Flat	18	103-2399	1	Pin-Spring, Clevis
3	323-10	1	Screw-HH	19	103-2085-03	1	Brake ASM
4	3256-24	2	Washer-Flat	20	3296-29	1	Nut-Lock, NI
5	1-413344	1	Bushing-Pivot	21	116-3515	1	Screw-HH Special
6	1-414504	1	Bracket ASM	22	3218-3	1	Nut-Jam
6:2	1-413347	2	Sleeve-Bushing	23	1-323161	1	Spring-Idler
7	3290-500	2	Screw-PPH	24	1-633181	1	Plate-Tapped
8	119-6675-03	1	Park Brake Lever	26	1-323549	2	Spacer
9	1-303020	1	Grip-Lever	27	103-2191	2	Spacer
10	1-806003	3	Pin-Cotter, Hair	28	323-9	2	Screw-HH
11	1-413496	1	Linkage-Upper	29	1-413489	1	Linkage-Lower
12	1-414508	1	Bellcrank ASM	30	1-303548	1	Bushing-Plastic
13	32128-21	2	Nut-HF	31	32128-20	1	Nut-HF
14	323-6	5	Screw-HH	32	115-1039	1	Decal-Brake, Park
15	1-413497	1	Bellcrank	33	32128-33	2	Nut-HF
16	3296-39	7	Nut-Lock, NI				



Frame and Linkage Assembly

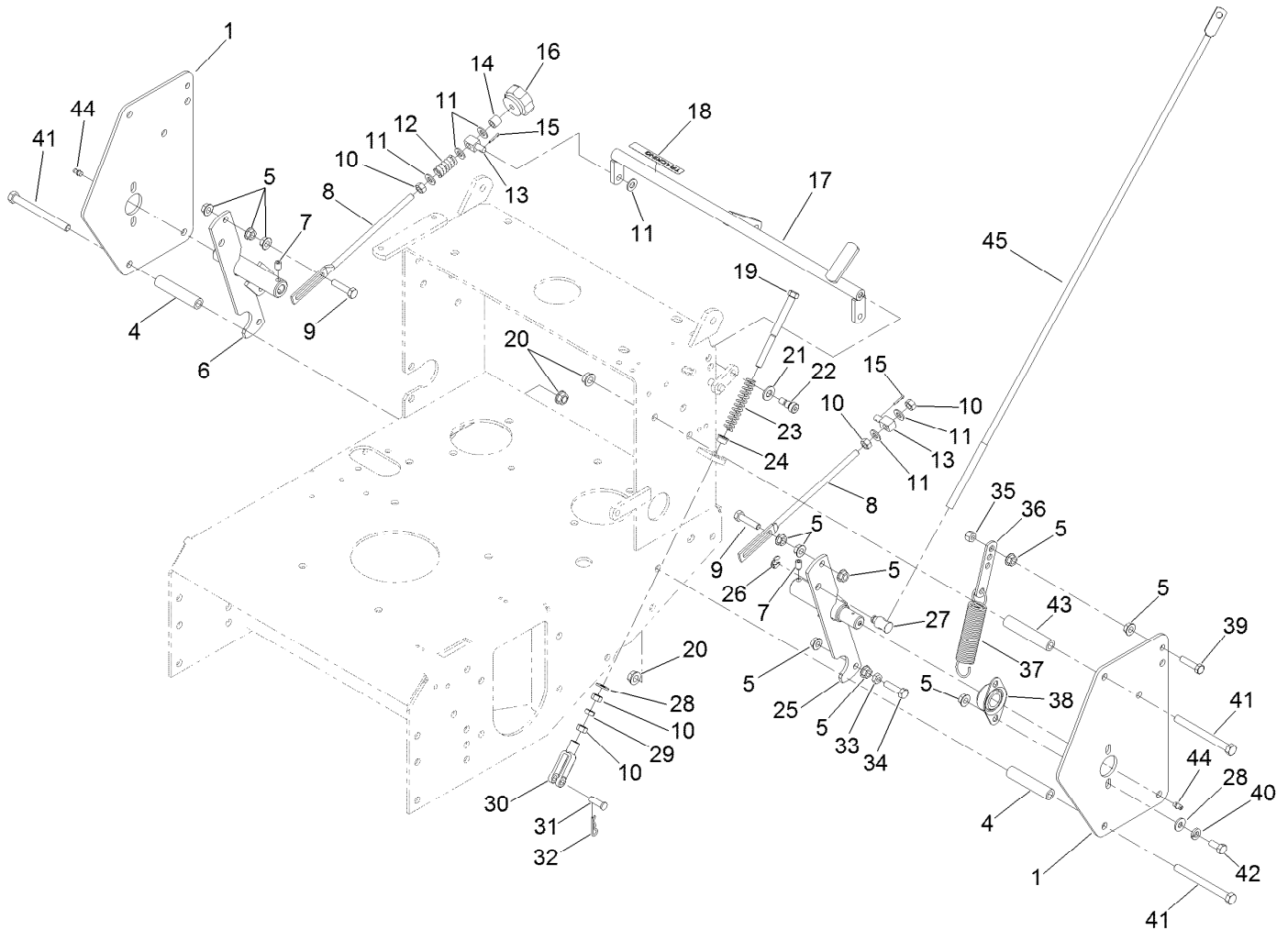
<i>Ref.</i>	<i>Part Number</i>	<i>Qty.</i>	<i>Description</i>	<i>Ref.</i>	<i>Part Number</i>	<i>Qty.</i>	<i>Description</i>
1	114-1890-01	1	Hydro Frame ASM	18:3	302-40	1	Fitting-Grease
6	3296-29	1	Nut-Lock, NI	19	32128-21	1	Nut-HF
8	1-633181	2	Plate-Tapped	20	321-3	2	Screw-HH
10	1-323213	1	Bracket-Switch, Blade	21	1-809062	1	Screw
11	32128-33	2	Nut-HF	22	1-323172	1	Linkage-Engage, Blade
12	3290-500	4	Screw-PPH	23	1-322090-01	1	Bellcrank ASM
14	1-806003	3	Pin-Cotter, Hair	24	322-6	1	Screw-HH
16	1-303105	1	Yoke-Adjustable	25	3256-23	2	Washer-Flat
17	1-808280	1	Pin-Clevis	31	1-543296	1	Grommet
18	1-322108	1	Bellcrank ASM	32	1-303287	3	Tie-Cable



Hydraulic System Assembly

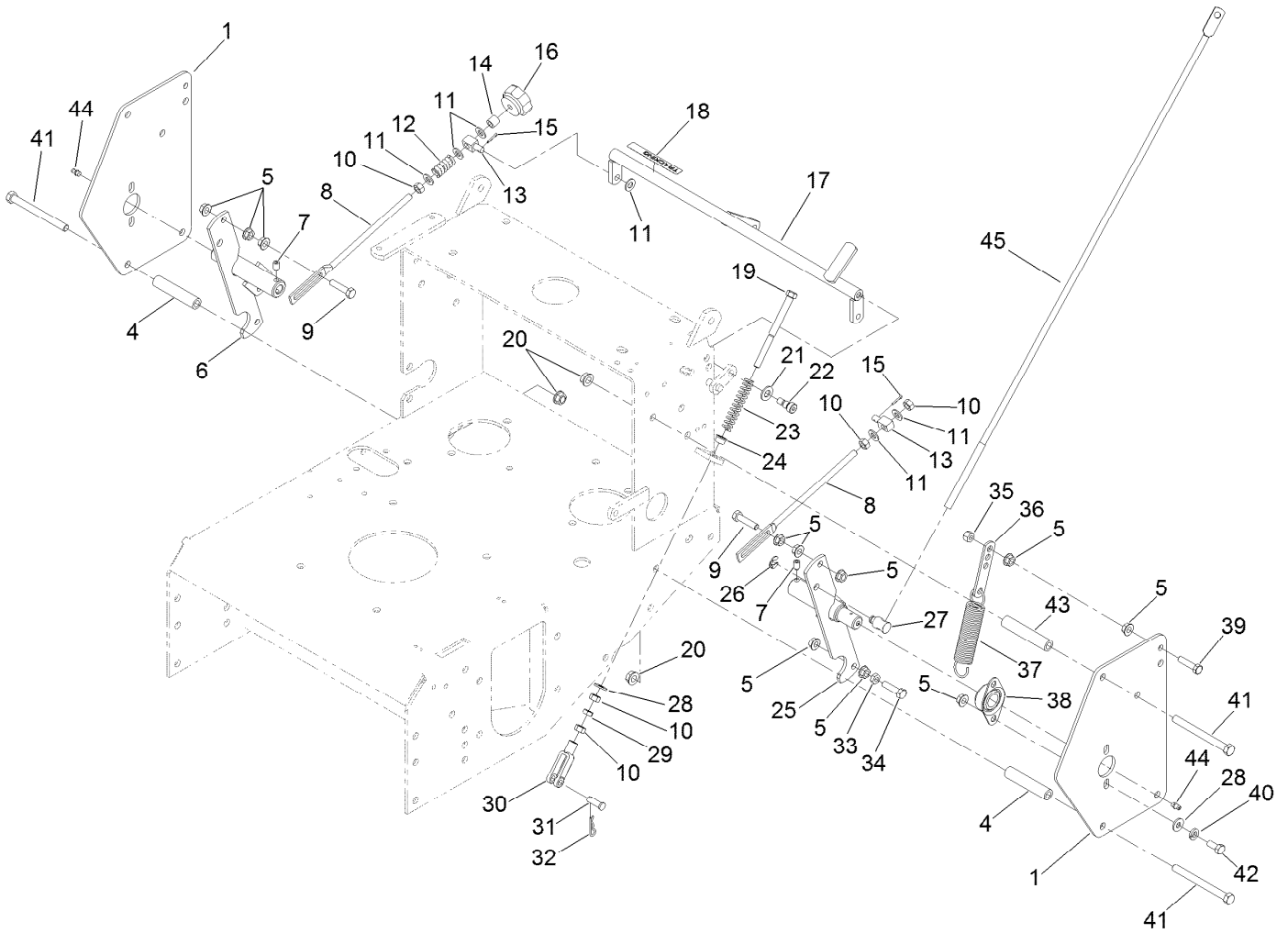
Ref.	Part Number	Qty.	Description	Ref.	Part Number	Qty.	Description
1	107-8433	1	HYD Reservoir ASM	9	321-3	2	Screw-HH
1:1		1	Reservoir-HYD ●	10	1-805004	2	Washer-Lock
1:1:1	103-1948	1	Cap-Reservoir, HYD	11	103-2889	1	Filter Head ASM
1:1:2	103-1949	1	Gasket-Cap	11:2	103-1912	2	Adapter-Straight
1:2	115-4212	1	Decal-Warning	11:2:1	237-42	1	O-Ring
2	103-1801	1	Adapter-Straight	12	1-633750	1	Filter-Oil, HYD
2:1	237-42	1	O-Ring	13	116-0918	1	Case Drain Hose ASM
3	103-1807	1	Fitting-Barbed, 45 DEG	14	103-1799	2	Elbow-90 DEG
3:1	237-42	1	O-Ring	14:1	237-42	1	O-Ring
4	103-1716	3	Clamp-Hose	15	103-1802	2	Fitting-HYD, 90 DEG
5	103-1988	3	Clamp-Hose	15:1	1-603921	1	O-Ring
6	119-7827	2	HYD Hose ASM	16	116-2123	1	Charge Hose ASM
7	119-7826	2	HYD Hose ASM	17	103-2959	1	Hose-Charge
8	1-603991	4	Fitting-Straight	18	1-603990	4	Fitting-Straight
8:1	237-80	1	O-Ring	18:1	1-603920	1	O-Ring
8:2	1-603992	1	O-Ring	18:2	1-603992	1	O-Ring

● Not serviced separately



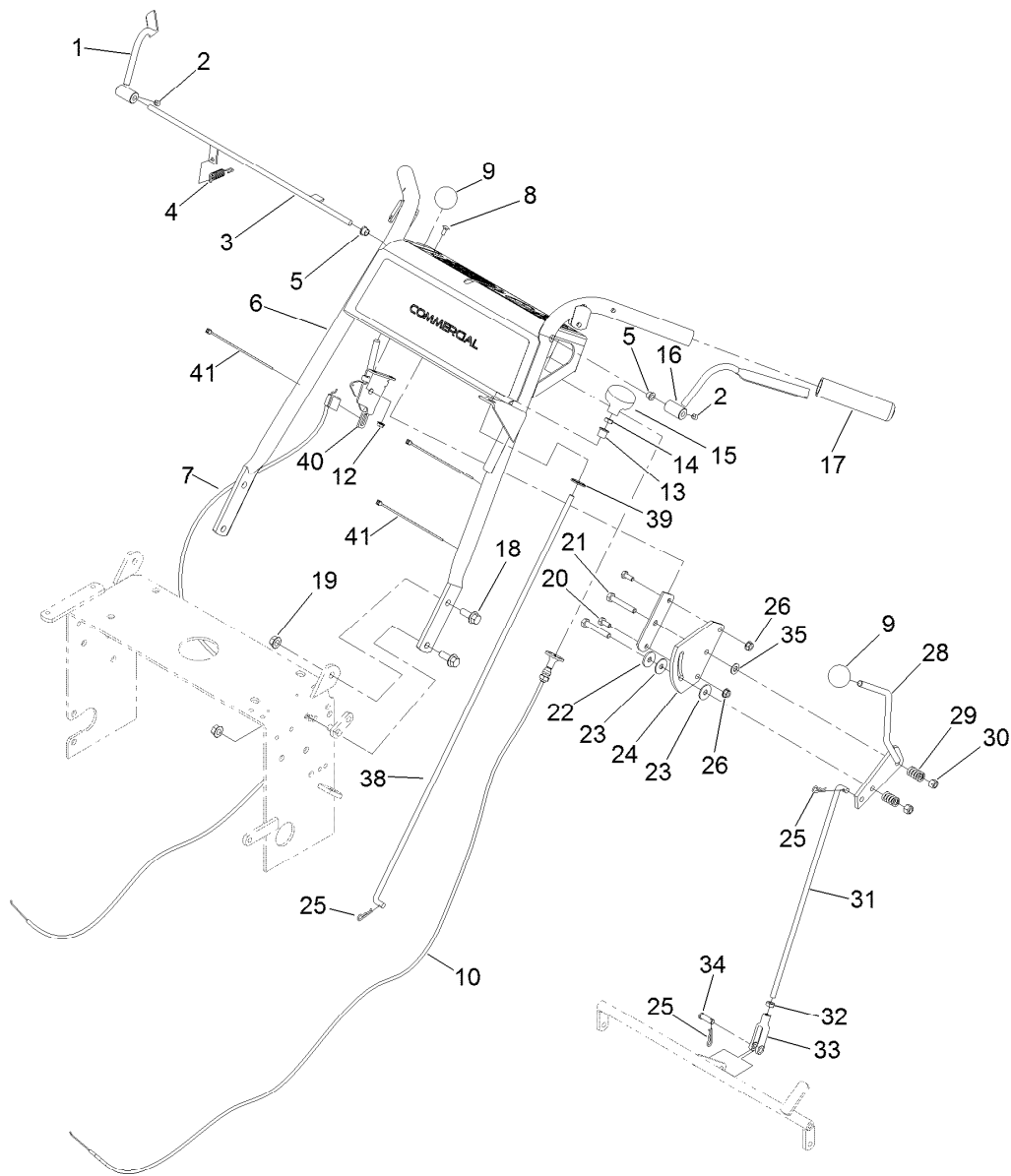
Control Linkage Assembly

<i>Ref.</i>	<i>Part Number</i>	<i>Qty.</i>	<i>Description</i>	<i>Ref.</i>	<i>Part Number</i>	<i>Qty.</i>	<i>Description</i>
1	110-4897-01	2	Shield-Control	24	1-603735	2	Bushing-Flanged
4	1-323197-01	4	Spacer-Shield	25	103-1190-01	1	Shaft-Control, LH
5	32128-20	18	Nut-HF	26	32151-47	2	Ring-Retaining
6	103-4796-01	1	Shaft-Control, RH	27	103-1235	2	Swivel-Lever, Drive
7	3246-4	2	Screw-Set	28	3256-2	6	Washer-Flat
8	1-413350	2	Link-Control, Speed	29	3220-2	2	Nut-Jam
9	1-403180	2	Screw-HH	30	1-303105	2	Yoke-Adjustable
10	3219-2	7	Nut-Hex	31	1-808280	2	Pin-Clevis
11	3256-23	7	Washer-Flat	32	1-806003	2	Pin-Cotter, Hair
12	1-323245	1	Spring-Compression	33	3218-2	2	Nut-Jam
13	1-603676	2	Swivel-Adjustable, Short	34	116-3515	2	Screw-HH Special
14	1-603903	1	Spacer	35	3296-29	2	Nut-Lock, NI
15	3272-5	2	Pin-Cotter	36	1-613089	2	Tab-Spring, Extension
16	103-3060	1	Knob-Tracking	37	1-603693	2	Spring-Extension
17	1-412203-01	1	Crank-Control, Speed	38	1-633102	2	Bearing-Flange, Side
18	105-4109	1	Decal-Tracking	39	1-800016	2	Bolt-TAP, HH
19	1-603737	2	Bolt-Return, Neutral	40	1-805005	4	Washer-Lock
20	3290-357	8	Nut-HHF, Whiz	41	323-16	8	Screw-HH
21	3256-24	2	Washer-Flat	42	322-3	4	Screw-HH
22	1-809056	2	Screw	43	1-323195-01	4	Spacer-Shield
23	1-603807	2	Spring-Return, Neutral				



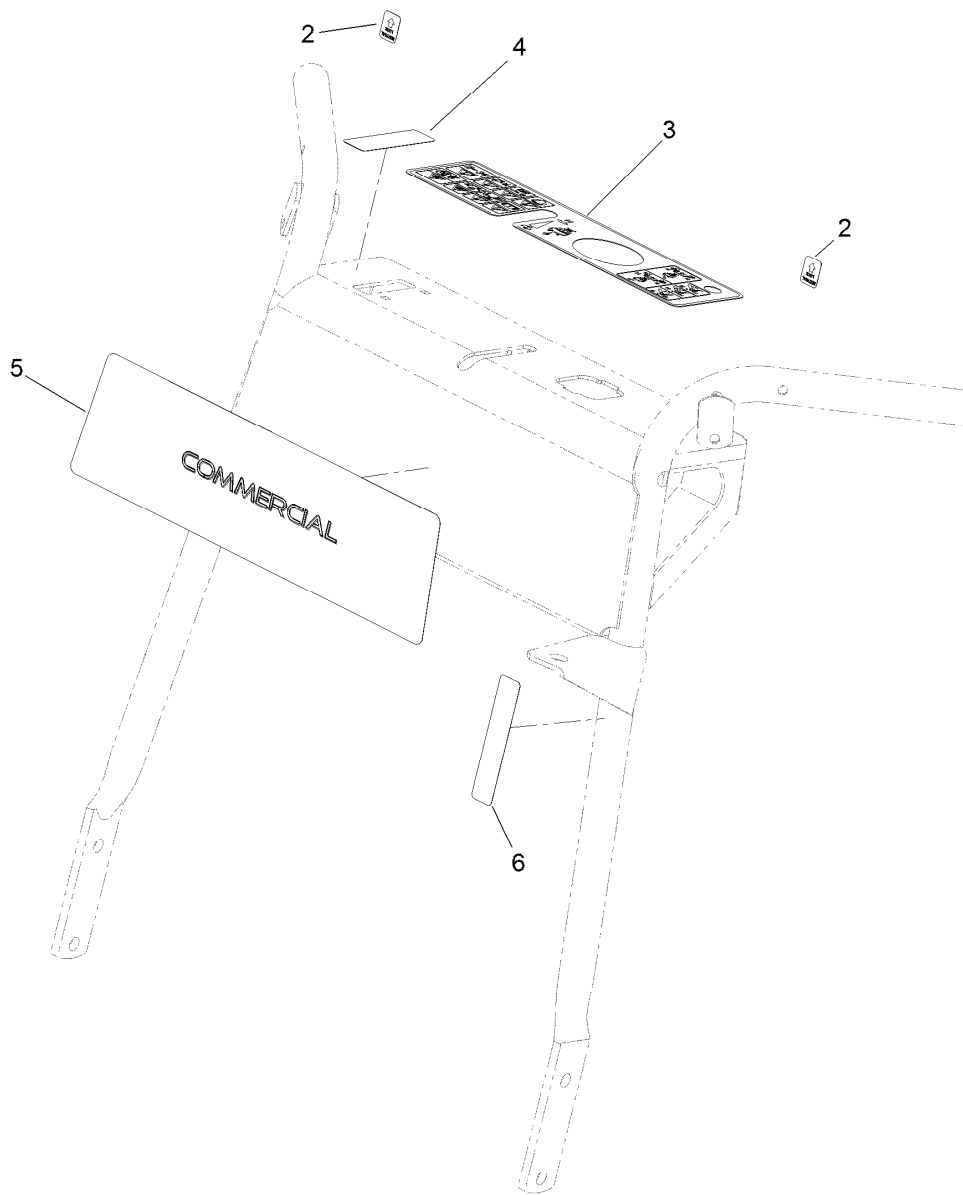
Control Linkage Assembly (continued)

<i>Ref.</i>	<i>Part Number</i>	<i>Qty.</i>	<i>Description</i>
44	302-19	2	Fitting-Grease
45	1-413219	2	Rod-Lever, Drive



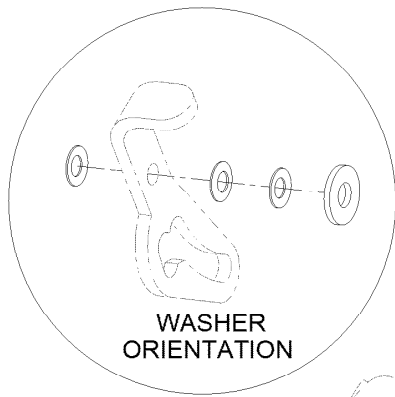
Control Handle Assembly

Ref.	Part Number	Qty.	Description	Ref.	Part Number	Qty.	Description
1	106-5486	1	RH Operator Presence Control Lever ASM	19	32128-21	4	Nut-HF
2	1-803322	2	Screw-Set	20	321-3	2	Screw-HH
3	106-2717-03	1	Rod-Control, Operator Presence	21	322-10	2	Screw-HH
4	1-303363	1	Spring-Extension	22	1-603716	1	Washer-Friction
5	1-303365	2	Bushing-Nylon	23	1-323244	2	Washer-Friction
6	119-6671	1	Handle ASM	24	1-603730	1	Plate-Lever, Shifter
7	119-6680	1	Cable-Control	25	1-806003	3	Pin-Cotter, Hair
8	1-807513	2	Bolt-CARR	26	32128-33	2	Nut-HF
9	1-603175	2	Knob-Ball	28	106-2748	1	Lever-Shift
10	119-6679	1	Control, Choke	29	1-323245	2	Spring-Compression
12	32128-17	2	Nut-Lock, Flange	30	3296-29	2	Nut-Lock, NI
13	1-323143	1	Bearing-Nylon	31	1-323522	1	Rod-Control, Speed
14	3218-2	1	Nut-Jam	32	3220-2	1	Nut-Jam
15	1-323134	1	Knob-Push / Pull	33	1-303105	1	Yoke-Adjustable
16	106-5485	1	LH Operator Presence Control Lever ASM	34	1-808280	1	Pin-Clevis
17	104-9838	2	Grip-Foam	35	3256-23	1	Washer-Flat
18	3234-11	4	Screw-HHF	38	1-323181	1	Linkage-Blade
				39	1-323142	1	Nut-Push
				40	110-5547	1	Control Lever ASM
				41	1-303287	3	Tie-Cable

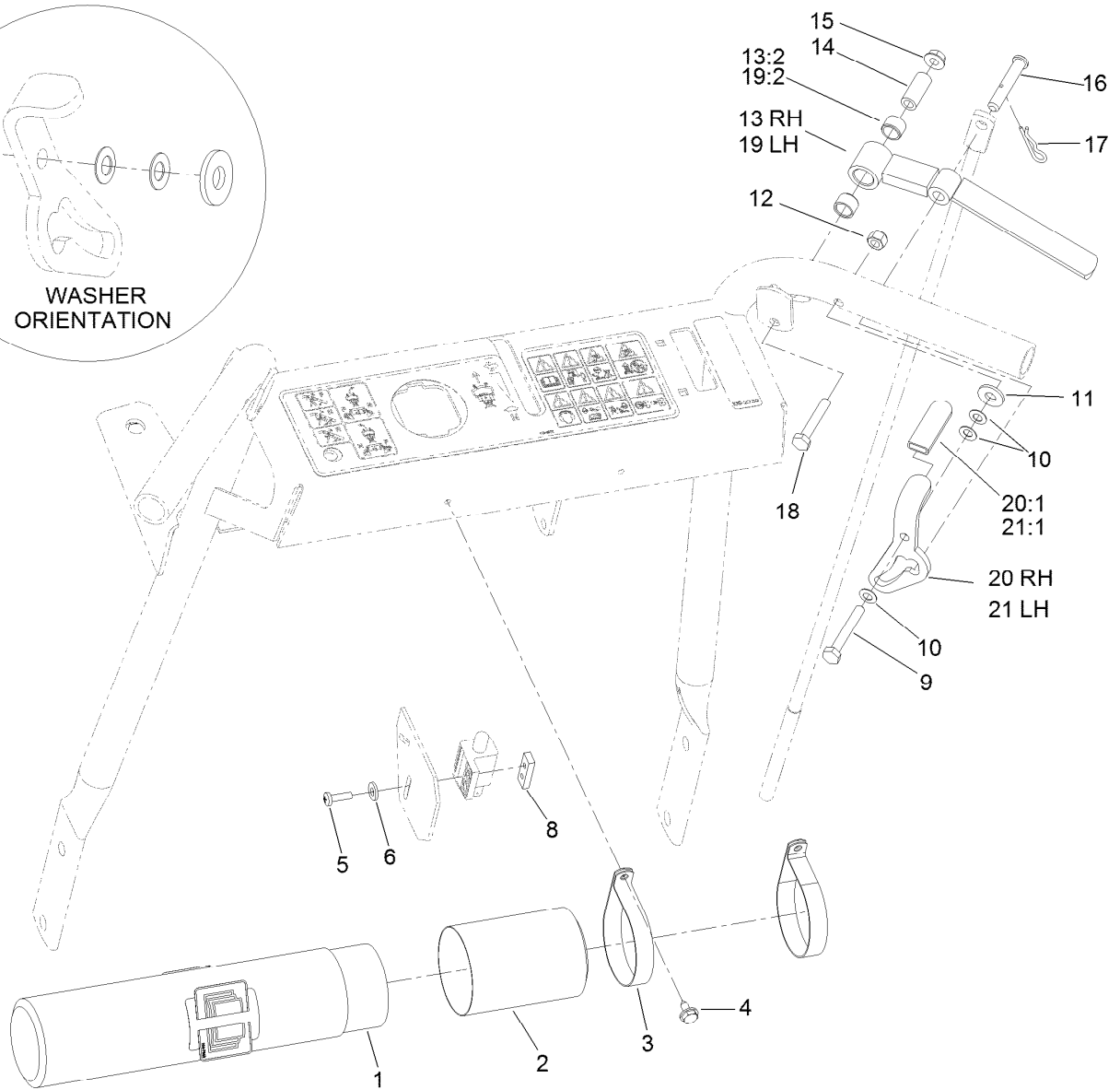


Handle Decal Assembly

<i>Ref.</i>	<i>Part Number</i>	<i>Qty.</i>	<i>Description</i>
2	105-4110	2	Decal-Lock, Neutral
3	119-6672	1	Decal-Control Panel
4	106-2733	1	Decal-Throttle
5	110-6917	1	Decal
6	95-5537	1	Decal-Engage, Deck

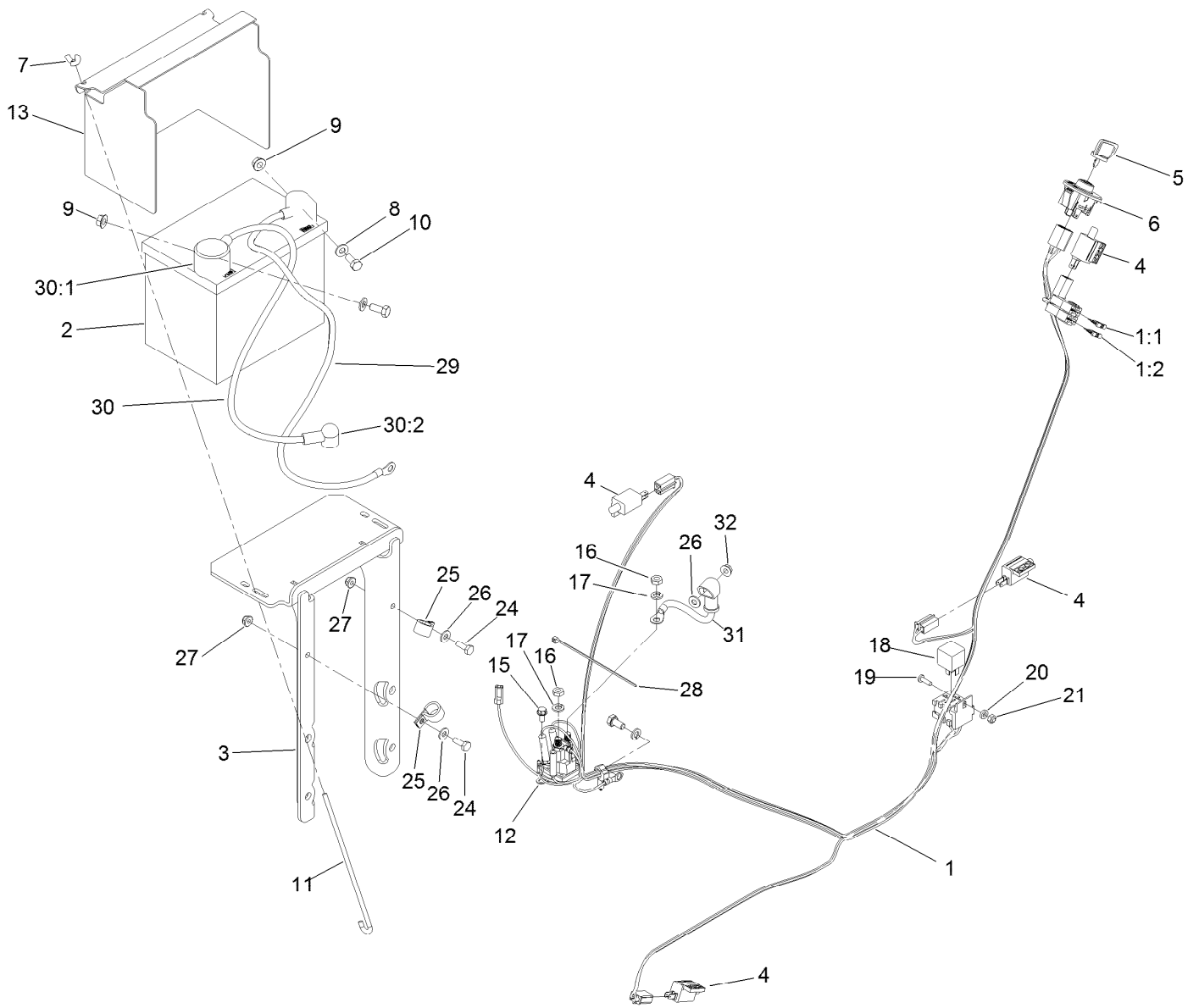


WASHER
ORIENTATION



Drive Control Assembly

Ref.	Part Number	Qty.	Description	Ref.	Part Number	Qty.	Description
1	104-7050	1	Tube-Manual	13:2	1-413152	2	Bushing-Sleeve
2	104-7048	1	Cap-Housing	14	1-603749	2	Bushing-Lever, Drive
3	2412-120	2	R-Clamp	15	32128-33	2	Nut-HF
4	32104-76	2	Screw	16	1-613055	2	Pin-Clevis
5	3290-500	2	Screw-PPH	17	1-806003	2	Pin-Cotter, Hair
6	3256-14	1	Washer-Flat	18	321-9	2	Screw-HH
8	1-633181	1	Plate-Tapped	19	103-0218	1	LH Drive Lever ASM
9	321-10	2	Screw-HH	19:2	1-413152	2	Bushing-Sleeve
10	1-303435	6	Washer-Spring	20	1-612168	1	RH Latch And Grip ASM
11	3256-2	2	Washer-Flat	20:1	1-303019	1	Grip-Latch
12	3296-42	2	Nut-Lock, NI	21	1-612167	1	LH Latch Grip ASM
13	103-0219	1	RH Drive Lever ASM	21:1	1-303019	1	Grip-Latch



Electrical Assembly

Ref.	Part Number	Qty.	Description
1	119-6667	1	Harness-Wire
1:1	109103	1	Fuse-Blade, 30 Amp
1:2	109102	1	Fuse-Blade, 25 Amp
2	104-2491	1	Battery
3	119-6666-03	1	Tray-Battery
4	1-513051	4	Switch-Open, Normally
5	63-8360	1	Key-Ignition
6	117-2221	1	Switch-Ignition
7	1-543792	2	Wingnut
8	3256-23	2	Washer-Flat
9	109-5715	2	Nut-HHF, Smooth
10	322-3	2	Screw-HH
11	1-633651	2	Bolt-Holddown
12	117-1197	1	Solenoid
13	117-0543-01	1	Cover-Battery
15	32144-4	2	Screw-HWH
16	3220-2	2	Nut-Jam
17	3253-4	2	Washer-Lock
18	98-7249	1	Relay
19	3290-500	1	Screw-PPH
20	99-3058	1	Washer
21	3296-2	1	Nut-Lock, NI
24	321-4	2	Screw-HH
25	2412-87	2	Clamp-Cable
26	3256-22	2	Washer-Flat
27	104-7201	2	Nut-HF
28	1-303287	1	Tie-Cable
29	117-6422	1	Cable-Battery, Black
30	109-7653	1	Positive Battery Cable ASM
30:1	109-2407	1	Insulator-Battery
30:2	1-543393	1	Insulator-Solenoid
31	106-8268	1	Cable-Battery, Red
32	32128-33	1	Nut-HF

Attachments and Accessories

For 30069 Commercial Walk-Behind Traction Unit 18HP Pistol-Grip Hydro Drive

Product Name	Model/Part
32in(82cm) Mid-Size Rear-Discharge Deck.....	02710
36in(92cm) Mid-Size Rear-Discharge Deck.....	02711
48in(122cm) Mid-Size Rear-Discharge Deck.....	02712
36in(92cm) Mid-Size Flail Attachment	02720
Cleated Tire Kit	02930
Dual Wheel Kit.....	02931
Narrow Wheel Kit.....	02932
Weight Kit	110-2085
Sulky.....	30109

Notes:

Notes:

Notes:



Count on it.