



**Count on it.**

**Parts Catalog**

**e-Cycler 20-inch Cordless Lawn Mower**

**Model No. 20360—Serial No. 31000001 and Up**

# Ordering Replacement Parts

To order replacement parts, please supply the part number, the quantity, and the description of each part desired.

## Understanding Reference Numbers

Each identified part in an illustration has a reference number. The reference number for a part also appears in the parts list, along with other information about the part.

This catalog uses two special reference number formats, one to indicate parts in a service assembly and another to indicate the quantity of a given part in an illustration.

## Service Assembly Reference Numbers

Parts in service assemblies have reference numbers in the form a:b. The a represents the reference number of the entire service assembly and the b represents a sequential number unique to each part within the service assembly.

For example, a wheel assembly might be identified by reference number 6, the tire by 6:1, the valve by 6:2, and the wheel by 6:3. When you order the assembly identified by reference number 6, you receive all parts identified by reference numbers 6:1, 6:2, and 6:3. However, you may also order any part individually. Reference numbers of this type appear in illustration and in parts lists.

## Reference Numbers Indicating Quantity

In an illustration, if a reference number indicates more than one part, the reference number has the form nX y. The n represents the quantity of the part, the X is the multiplication symbol, and the y represents the reference number.

For example, in an illustration, the reference number 2X 37 means that two of the parts identified by reference number 37 are indicated.

# List of Abbreviations

**AR:** as required

**ASM:** assembly

**BBC:** blade brake control

**BHTF:** button head thread forming

**CARR:** carriage

**CCW:** counter clockwise

**CW:** clockwise

**DEG:** degrees

**DPA:** Dual Point Adjustment

**ECM:** electronic control module

**EXT:** external

**FH:** flat head

**GA:** gauge

**HD:** heavy-duty

**HF:** hex flange

**HH:** hex head

**HHF:** hex head flange

**HHFTF:** hex head flange thread forming

**HJ:** hex jam

**HLH:** hex lag head

**HOC:** height-of-cut

**HSBH:** hex socket button head

**HSFH:** hex socket flat head

**HSH:** hex socket head

**HWH:** hex washer head

**HWTF:** hex washer head thread forming

**HYD:** hydraulic

**LH:** left hand

**LP:** Liquid Propane

**NI:** nylon insert

**NPTF:** national pipe thread fine

**PFH:** phillips flat head

**PPH:** phillips pan head

**PPHTF:** phillips pan head thread forming

**PRH:** phillips round head

**PTH:** phillips truss head

**PTO:** power-take-off

**RH:** right hand

**ROPS:** roll-over protection system

**RRB:** rear roller brush

**SFH:** slotted fillister head

**SHH:** slotted hex head

**SHWH:** slotted hex washer head

**SPH:** slotted pan head

**SQH:** square head

**SRH:** slotted round head

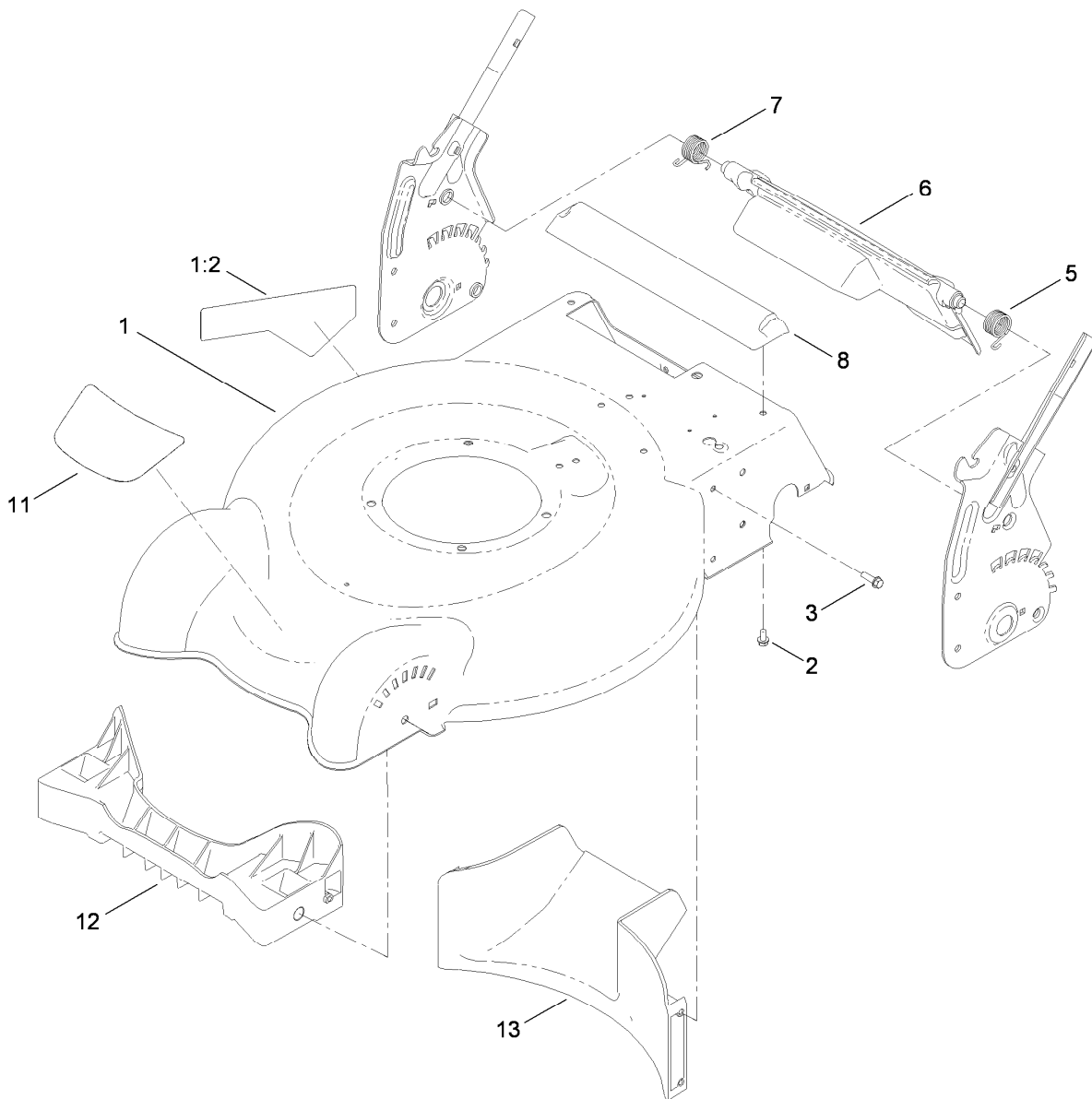
**STD:** standard

**TAP:** self tapping

**TTH:** torx truss head

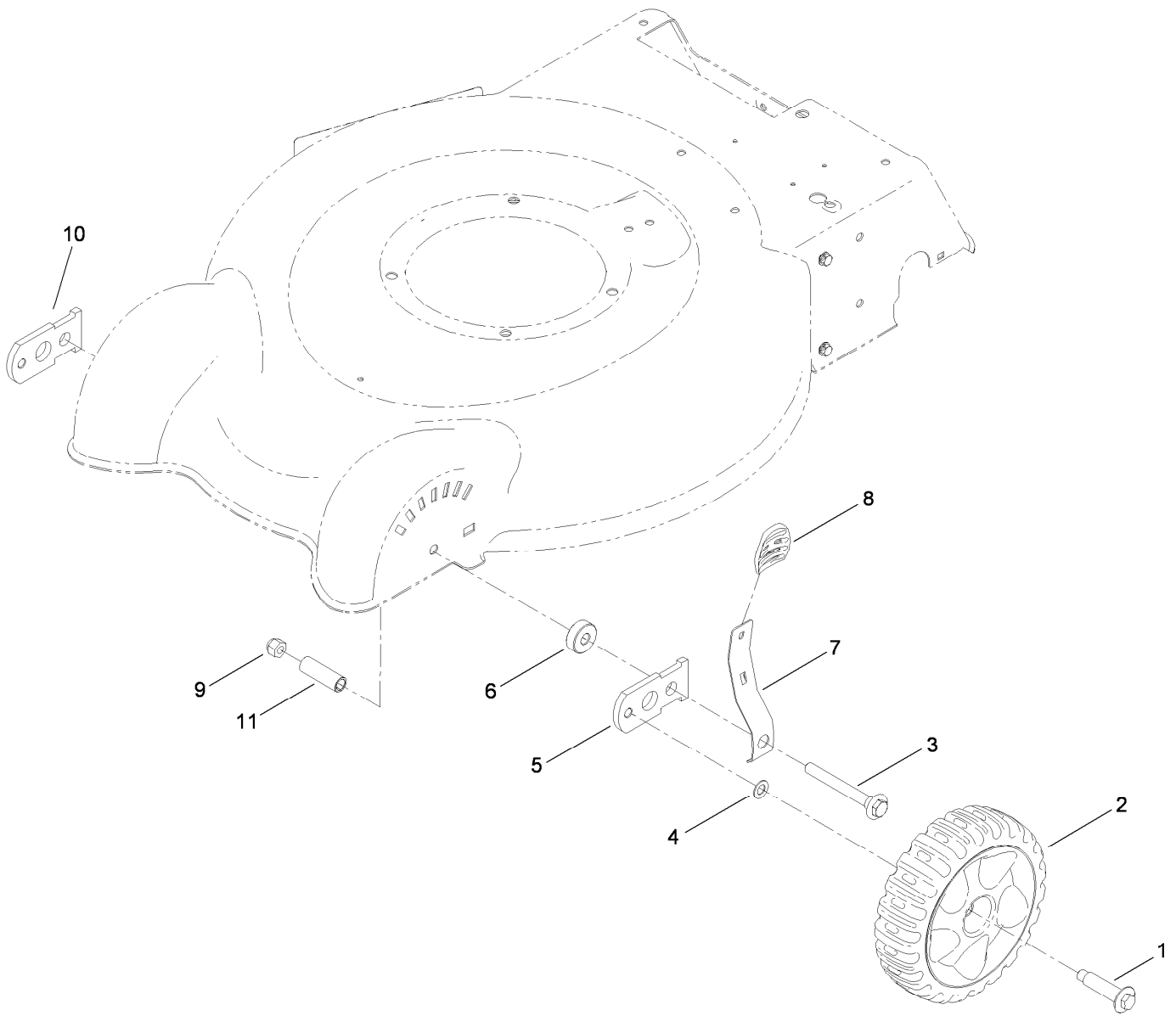
# Contents

Housing, Baffle and Rear Door Assembly .....	4
Front Axle and Height-of-Cut Assembly .....	5
Rear Axle and Height-of-Cut Assembly .....	6
Shroud, 36 Volt Motor and Battery Assembly.....	7
Handle and Control Assembly .....	8
36 Volt Switch Assembly.....	9
Frame and Bag Assembly.....	10
Attachments and Accessories .....	11



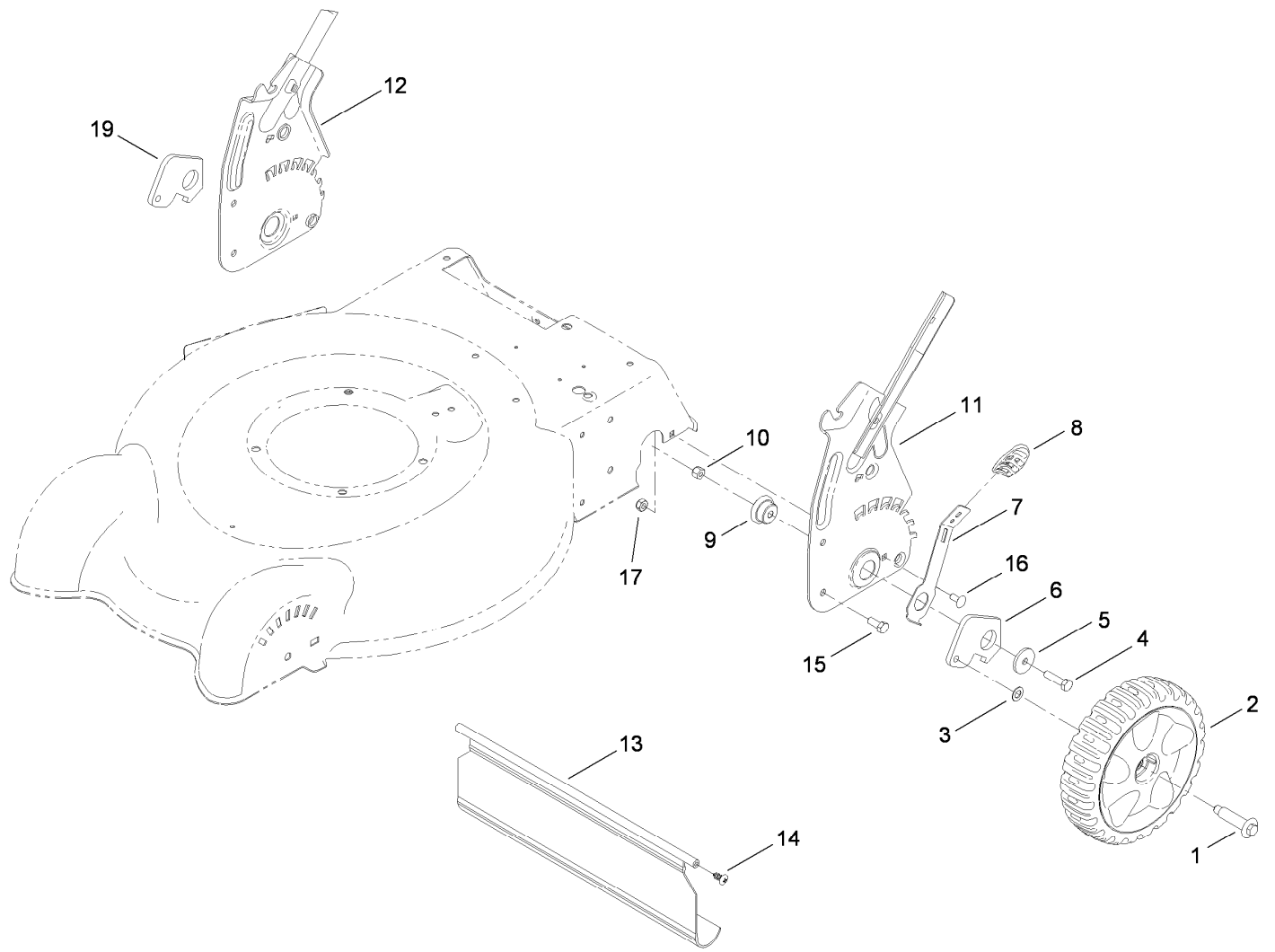
## Housing, Baffle and Rear Door Assembly

<i>Ref.</i>	<i>Part Number</i>	<i>Qty.</i>	<i>Description</i>
1	119-7033	1	Housing ASM
1:2	119-7023	1	Decal-Danger, Cut Finger
2	46-8093	3	Screw-Plastite
3	46-8091	6	Screw-HWH
5	119-7015	1	Spring-Torsion, LH
6	119-7027	1	Deflector-Rear
7	119-7016	1	Spring-Torsion, RH
8	112-8845	1	Chute-Rear
11	117-5998	1	Decal-Battery
12	119-3763	1	Baffle-Front
13	112-8814	1	Baffle-Rear



## Front Axle and Height-of-Cut Assembly

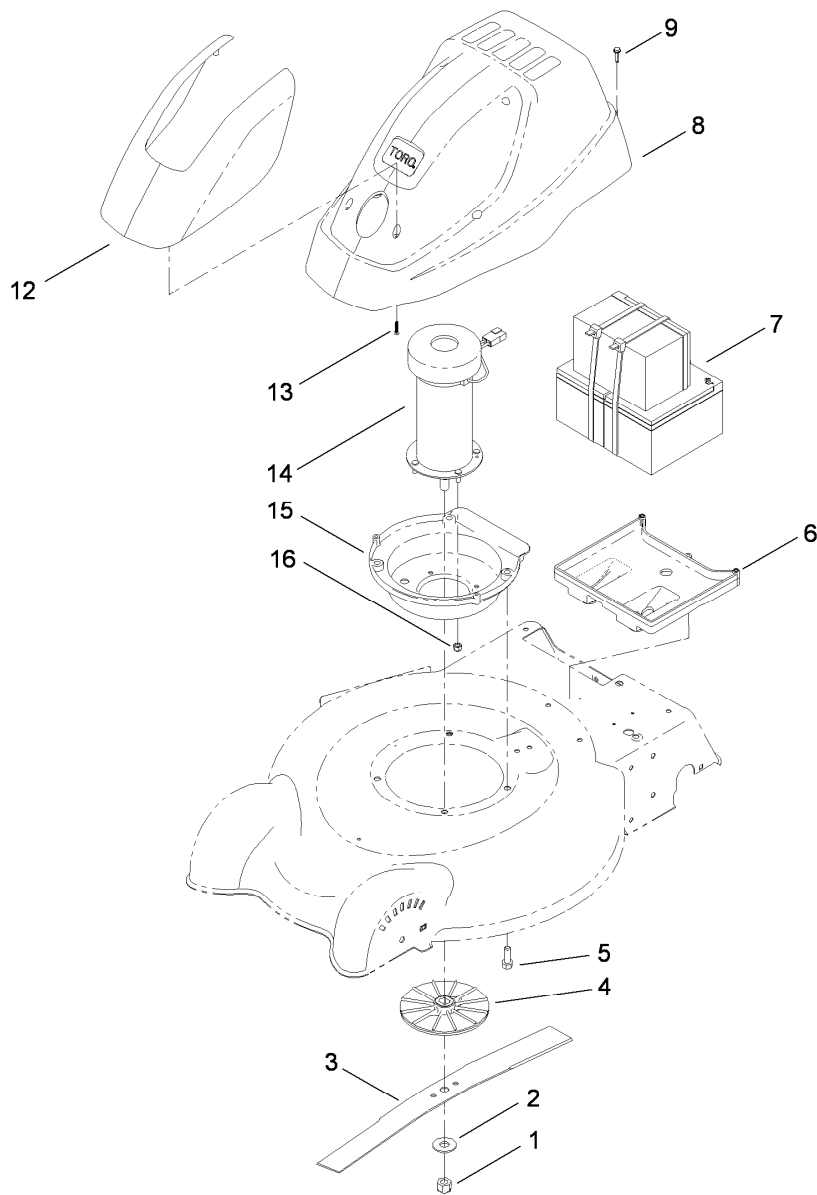
Ref.	Part Number	Qty.	Description
1	614650	2	Bolt-Shoulder
2	119-3777	2	7 Inch Wheel And Tire ASM
3	117-5996	2	Bolt-Shoulder
4	40-1940	2	Washer
5	107-3877	1	Arm-Pivot, RH
6	117-5997	2	Spacer-Arm, Pivot
7	112-8828	2	Arm-Spring, Front
8	105-3042	2	Knob-Lever, HOC
9	3296-39	2	Nut-Lock, NI
10	108-1044	1	Arm-Pivot, LH
11	117-5992	2	Spacer-Baffle, Front



## Rear Axle and Height-of-Cut Assembly

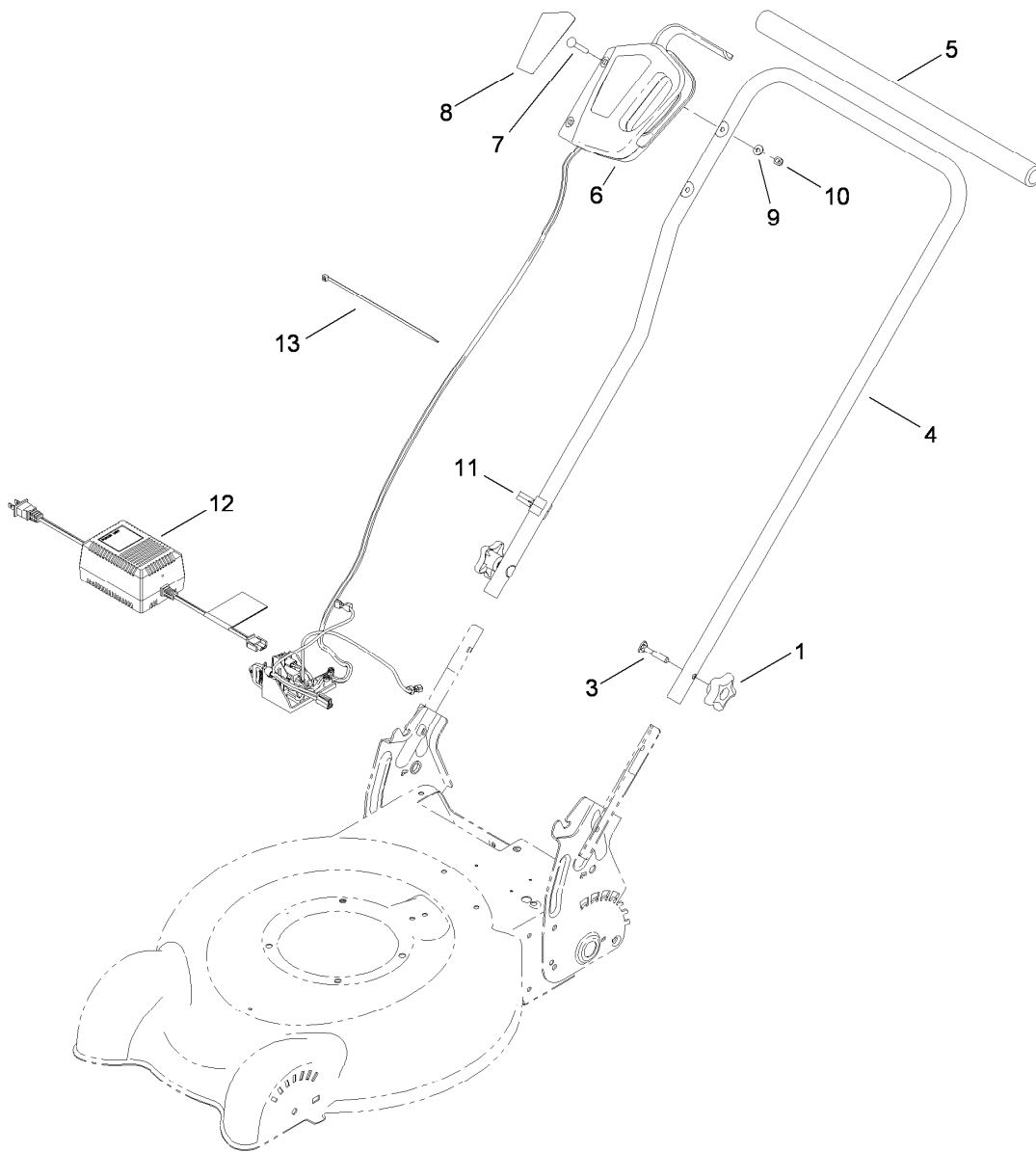
Ref.	Part Number	Qty.	Description
1	614650	2	Bolt-Shoulder
2	117-5995	2	8" Wheel And Tire ASM
3	40-1940	2	Washer
4	322-6	2	Screw-HH
5	105-3048	2	Washer-Flat
6	105-1819	1	Arm-Pivot, Rear (LH)
7	105-1809	2	Arm-Spring
8	105-3042	2	Knob-Lever, HOC
9	105-1818	2	Bushing-Mount, HOC

Ref.	Part Number	Qty.	Description
10	3296-29	6	Nut-Lock, NI
11	119-3804-03	1	HOC-LH
12	119-3805-03	1	HOC-RH
13	112-8768	1	Shield-Trailing
14	117-1092	2	Screw-PTH
15	322-3	4	Screw-HH
16	3229-11	2	Screw-CARR
17	3296-16	2	Nut-Lock, NI
19	108-4816	1	Arm-Pivot, Rear (RH)



## Shroud, 36 Volt Motor and Battery Assembly

Ref.	Part Number	Qty.	Description
1	3296-19	1	Nut-Hex
2	3256-6	1	Washer-Flat
3	119-0303-03	1	Blade-20 Inch
4	119-3774	1	Fan Motor ASM
5	95-1726	3	Screw-Taptite
6	119-0252	1	Tray-Battery
7	119-7060	1	36V Battery ASM
8	119-7020	1	Shroud ASM
9	100-4351	4	Screw-HWH
12	119-0251	1	Cover-Shroud
13	94-4496	4	Screw-PPH
14	119-0254	1	Motor-36V
15	117-5999	1	Base-Motor
16	3296-73	4	Nut-Lock, NI

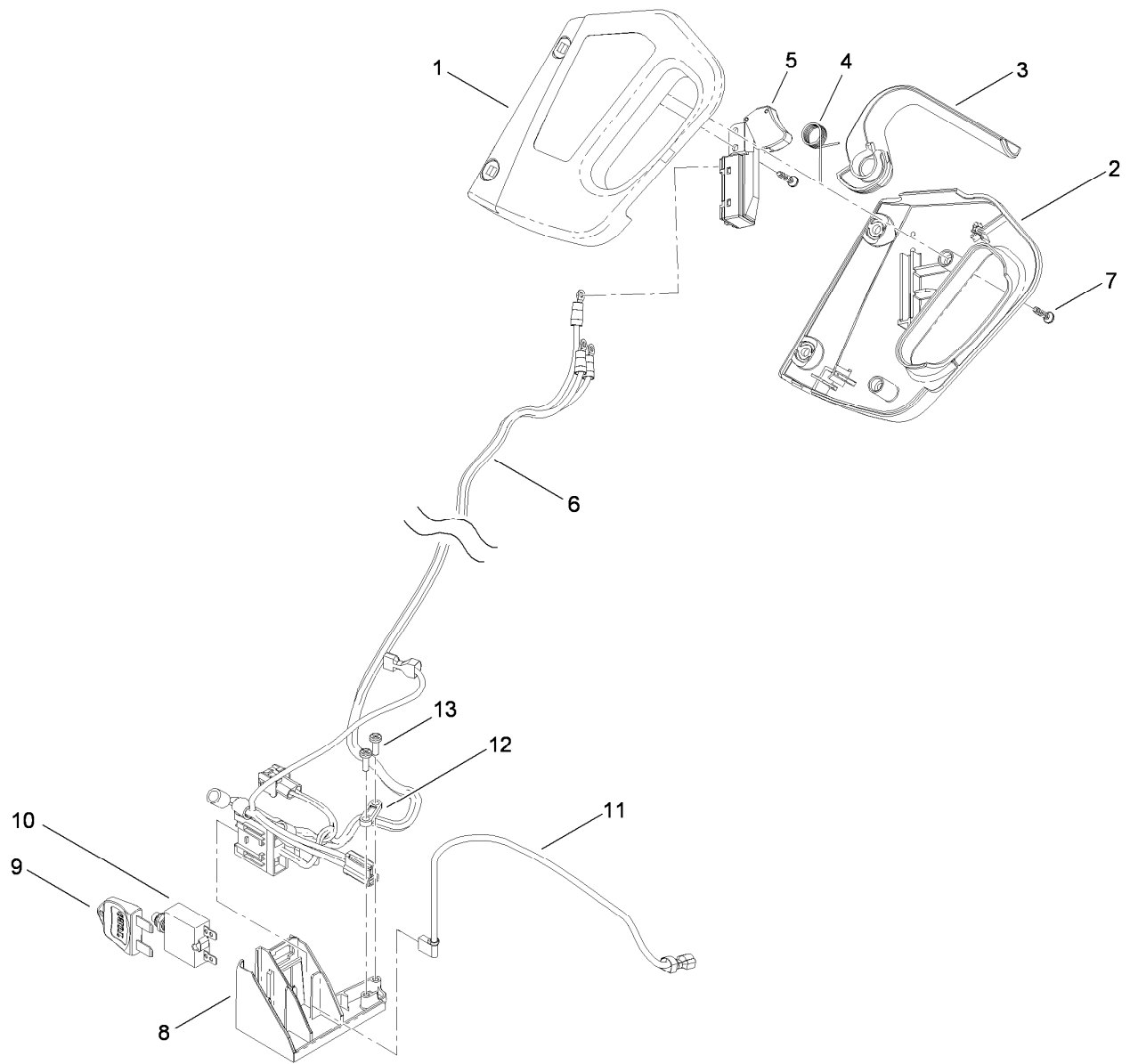


## Handle and Control Assembly

Ref.	Part Number	Qty.	Description
1	117-5976	2	Knob-Handle, Locking
3	112-8876	2	Screw-Handle
4	119-0301-03	1	Handle
5	119-0328	1	Foam-Handle
6		1	36 Volt Switch ASM ●
7	3229-5	2	Screw-CARR
8	119-3760	1	Decal-Housing, Switch
9	3256-1	2	Washer-Flat
10	3296-73	2	Nut-Lock, NI
11	114-7988	1	Guide-Cable
12	119-0269	1	Charger-Battery
13	614249	1	Strap-Tie

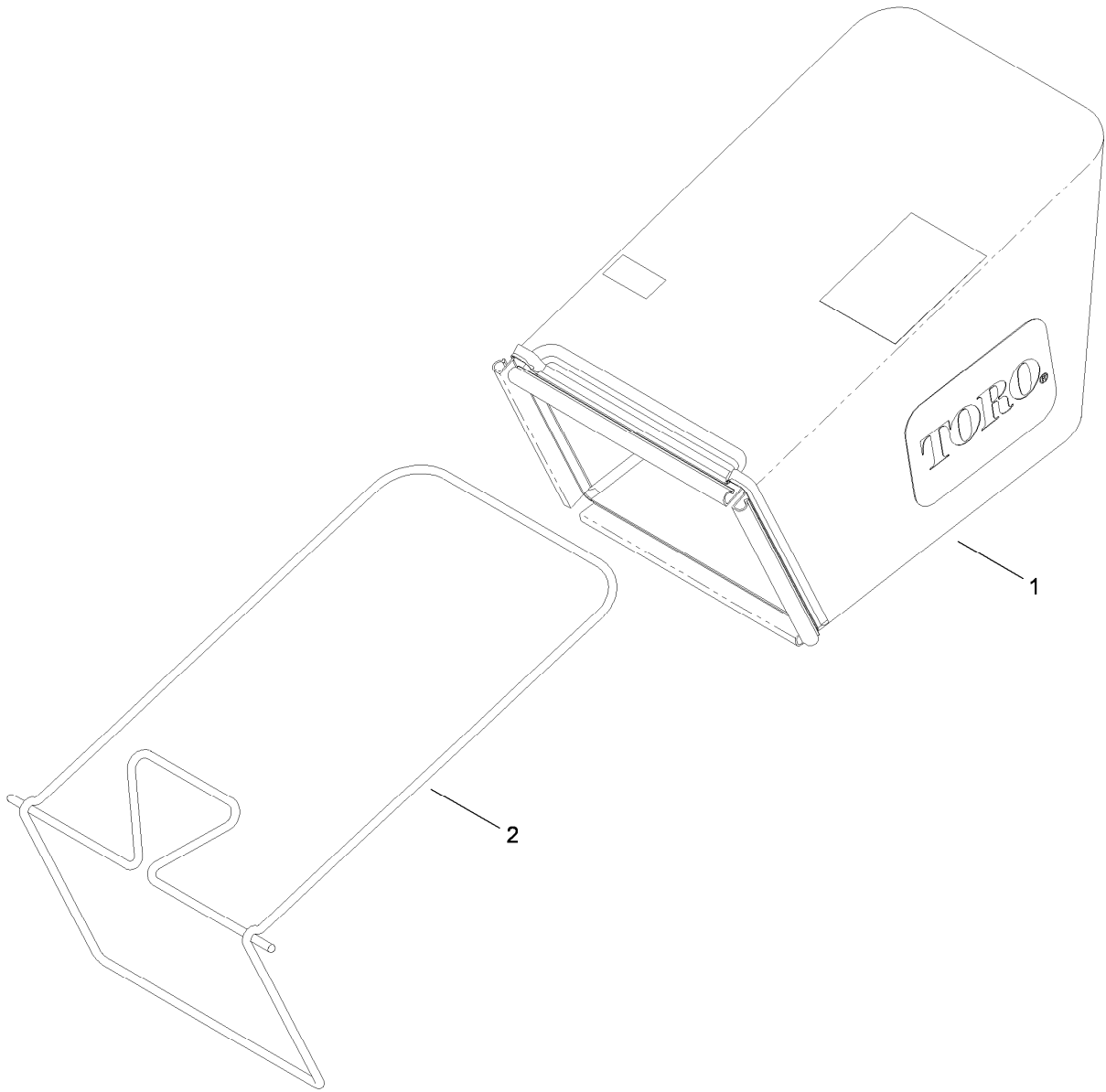
● Not serviced separately





## 36 Volt Switch Assembly

Ref.	Part Number	Qty.	Description
1	119-0258	1	Housing-Switch, LH
2	119-0259	1	Housing-Switch, RH
3	119-0261	1	Lever-Switch
4	119-0264	1	Spring-Torsion, Lever
5	119-3757	1	Switch-36V, Marquardt
6	119-0316	1	Harness-Wire
7	94-4496	4	Screw-PPH
8	119-0298	1	Housing-Terminal
9	119-0300	1	Key
10	119-3779	1	Circuit Breaker
11	119-3768	1	Harness-Wire (Jumper)
12	119-3814	1	Clamp-Harness
13	32104-118	2	Screw-PPH



## Frame and Bag Assembly

<i>Ref.</i>	<i>Part Number</i>	<i>Qty.</i>	<i>Description</i>
1	119-0325	1	Grass Bag ASM
2	119-0323-03	1	Frame-Bag

# Attachments and Accessories

## For 20360 e-Cycler 20-inch Cordless Lawn Mower

Product Name	Model/Part
Blade-Bagging .....	120-6207-03
Rear-Discharge Deflector, 2009 and After 20in Steel Deck Mower .....	89964



**Count on it.**