



Pump Mount Kit

Multi-Pro 5800 Turf Sprayer

Model No. 120-8561

Installation Instructions

Loose Parts

Use the chart below to verify that all parts have been shipped.

Procedure	Description	Qty.	Use
1	Flat washer Hex-head bolt (5/16 x 3 inches) Flange nut (5/16 inch) Compression spring	5 1 1 2	Install the kit.

1

Parts needed for this procedure:

5	Flat washer
1	Hex-head bolt (5/16 x 3 inches)
1	Flange nut (5/16 inch)
2	Compression spring

Procedure

1. Park the machine on a level surface, stop the engine, engage the parking brake, and remove the key from the ignition switch.
2. Operate all hydraulic controls to relieve the pressure in the hydraulic system.
3. Remove the 2 flange nuts that secure the rubber vibration mount to the motor mount plate, and remove the rubber vibration mount (Figure 1).

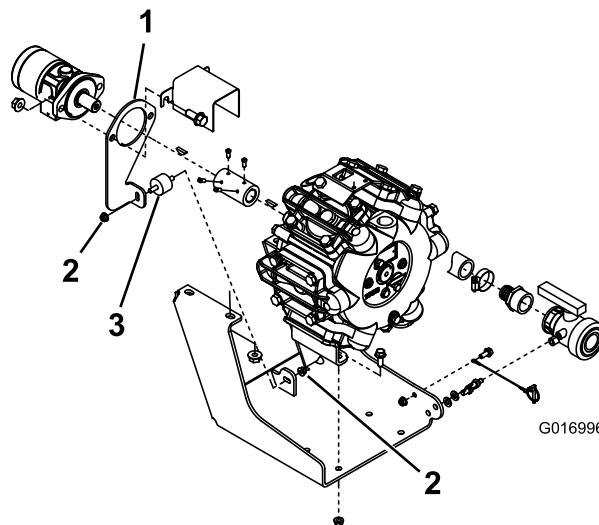


Figure 1

1. Motor mount plate
2. Flange nut
3. Rubber vibration mount

Note: Discard the rubber vibration mount and the nut.

4. Slide the washer onto the damper bolt and insert them into the vibration mount hole on the spray pump mount bracket (Figure 2).

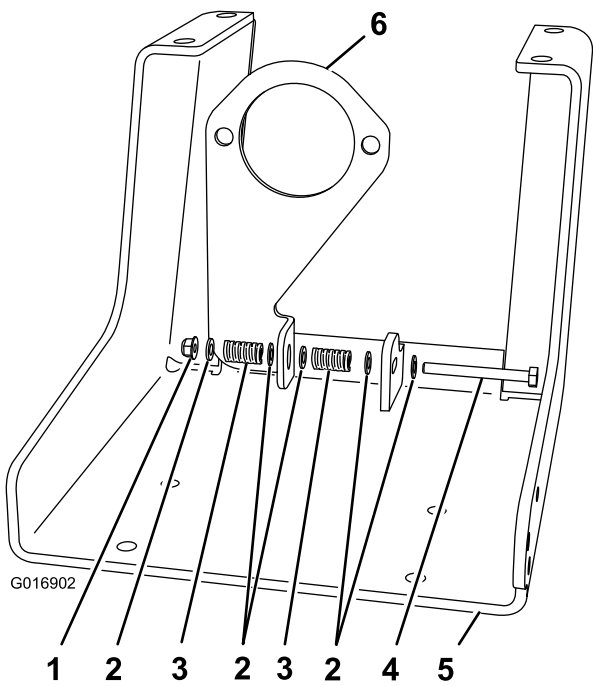


Figure 2

- | | |
|-----------------------|-----------------------|
| 1. Flange nut | 4. Damper bolt |
| 2. Washer | 5. Pump mount bracket |
| 3. Compression spring | 6. Motor mount plate |

-
5. Slide the following parts onto the damper bolt in the following order: a washer (part no. 3256-23), a spring (part no. 110-5331), and a washer (part no. 3256-23) (Figure 2).
 6. Insert the damper bolt (with the parts listed in step 5) into the plate hole (Figure 2).
 7. Slide the following parts onto the damper bolt in the following order: a washer (part no. 3256-23), a spring (part no. 110-8331), and a washer (part no. 3256-23), and secure them with a locknut (part no. 104-8300) (Figure 2).
 8. Tighten the nut until it is snug against the spring and 2 bolt threads extend past the locknut.