



Horn Kit

Workman® MD/MDX/MDX-D/MDE/HD/HDX/HDX-D Vehicle

Model No. 115-7825

Model No. 115-7827

Installation Instructions

Loose Parts

Use the chart below to verify that all parts have been shipped.

Procedure	Description	Qty.	Use
1	No parts required	–	Prepare the machine.
2	Horn (for MD, MDX, MDX-D, HD, HDX, and HDX-D vehicles)	1	Install the horn.
	Horn (for MDE vehicles)	1	
	Flange bolt (5/16 x 3/4 inch)	1	
	Lock nut (5/16 inch)	1	
3	Horn switch assembly	1	Install the horn switch.
	Horn button, rubber	1	
4	No parts required	–	Connect the horn kit to the wire harness.
5	Fuse 30A	1	Replace the fuse (gas and diesel powered vehicles only excluding MDX-D).
6	No parts required	–	Test the horn function.

1

Preparing the Machine

No Parts Required

Procedure

Position the machine on a level surface, stop the engine, remove the ignition key and engage parking brake.

⚠ CAUTION

If you leave the key in the ignition switch, someone could accidentally start the engine and seriously injure you or other bystanders.

Remove the key from the ignition switch before you do any maintenance.

Disconnect the negative battery cable. Refer to your *Operator's Manual* information about accessing the battery.

2

Installing the Horn

Parts needed for this procedure:

1	Horn (for MD, MDX, MDX-D, HD, HDX, and HDX-D vehicles)
1	Horn (for MDE vehicles)
1	Flange bolt (5/16 x 3/4 inch)
1	Lock nut (5/16 inch)

For MD, MDX and MDX-D Vehicles

1. Release the rubber straps on both sides of the hood and raise the hood.
2. Locate the main vehicle harness. Locate the flat connector and spade terminals for the horn kit

secured to the main wiring harness. Cut the wire tie to securing these connectors to the main harness.

3. Install the horn to the mount plate at the existing hole as shown in (Figure 1). Secure the horn with a flange bolt (5/16 x 3/4 inch) and lock nut (5/16 inch).

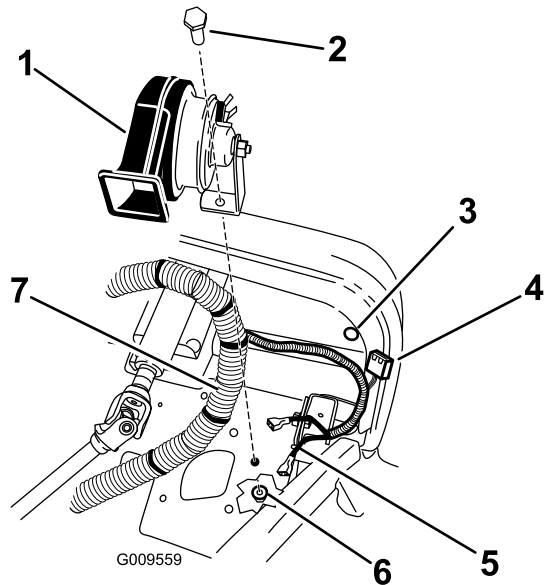


Figure 1

- | | |
|--|------------------------------|
| 1. Horn (MD and MDX vehicles) | 5. Spade terminals, for horn |
| 2. Flange bolt (5/16 x 3/4 inch) | 6. Lock nut (5/16 inch) |
| 3. Hole in dash for horn button | 7. Main wiring harness |
| 4. Flat box connector, for horn button | |

For MDE Vehicles

1. Release the rubber straps on both sides of the hood and raise the hood.
2. Locate the main vehicle harness. Locate the flat connector and spade terminals for the horn kit secured to the main wiring harness. Cut the wire tie to securing these connectors to the main harness.
3. Install the horn to the mount plate at the existing hole as shown in (Figure 2). Secure the horn with a flange bolt (5/16 x 3/4 inch) and lock nut (5/16 inch).

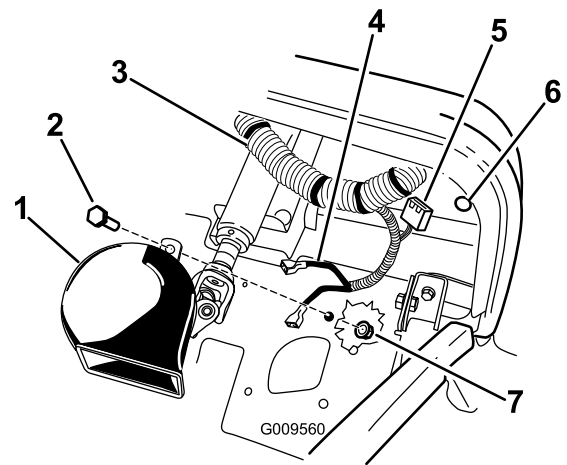


Figure 2

- | | |
|----------------------------------|--|
| 1. Horn (MDE vehicles) | 5. Flat box connector, for horn button |
| 2. Flange bolt (5/16 x 3/4 inch) | 6. Hole in dash for horn button |
| 3. Main wiring harness | 7. Lock nut (5/16 inch) |
| 4. Spade terminals, for horn | |

For HD, HDX and HDX-D Vehicles

1. Locate the wire harness secured to the frame under the driver's side floor pan; cut the tie securing the wire harness to the frame.
2. Install the horn to the mount plate at the existing hole as shown in (Figure 1). Secure the horn with a flange bolt (5/16 x 3/4 inch) and lock nut (5/16 inch).

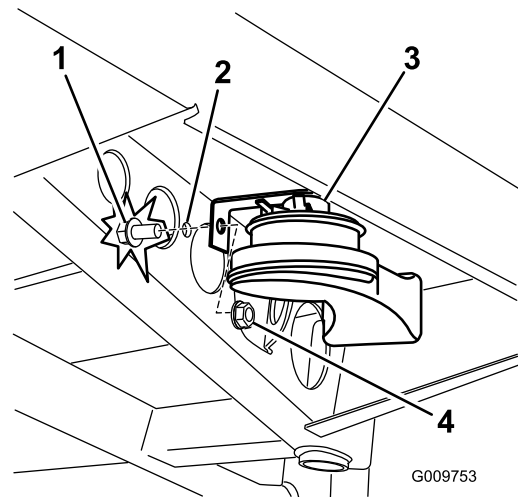


Figure 3

- | | |
|-----------------------------------|-------------------------------|
| 1. Flange bolt (5/16 x 3/4 inch) | 3. Horn (HD and HDX vehicles) |
| 2. Hole in underside of front end | 4. Lock nut (5/16 inch) |

3

Installing the Horn Switch

Parts needed for this procedure:

1	Horn switch assembly
1	Horn button, rubber

Procedure

1. Locate the existing hole in the dash for the horn and the plastic cover plug. Remove the plug.
2. Locate the horn switch assembly in loose parts.
3. Install the horn button to the dash panel as shown in Figure 4. Secure the horn switch to the dash by threading on the rubber horn button.

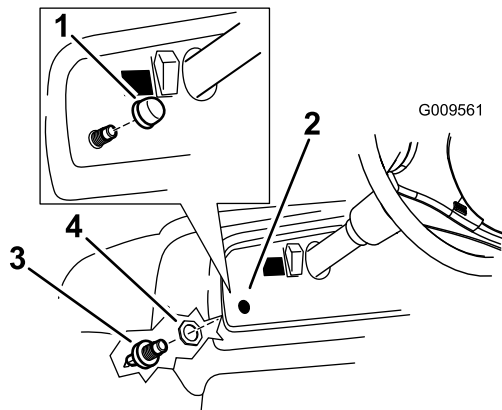


Figure 4

1. Rubber horn button cover
2. Hole in dash
3. Lock ring
4. Switch

4

Connecting the Horn Kit to the Wire Harness

No Parts Required

Connecting the Horn

Connect the spade connectors on the wire harness to the terminals on the horn (Figure 5).

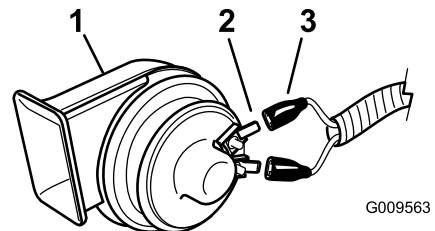


Figure 5

1. Horn
2. Horn terminals
3. Spade connectors, wiring harness

Connecting the Horn Switch

Connect the flat box connector on the wire harness to the terminals on the horn button switch (Figure 6).

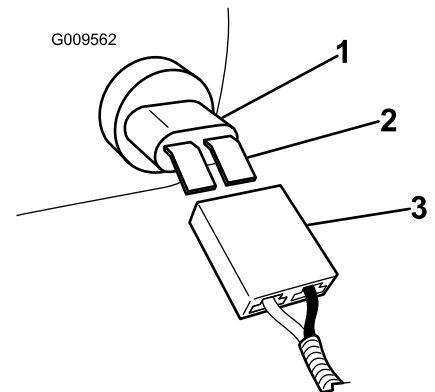


Figure 6

1. Horn button switch
2. Terminals
3. Flat box connector, wiring harness

5

Replacing the Fuse (Gas and Diesel Powered Vehicles Only excluding MDX-D)

Parts needed for this procedure:

1	Fuse 30A
---	----------

Procedure

Note: MDX-D models already have a 30A fuse installed.

Replace the existing horn fuse in the fuse block with the 30A fuse found in loose parts. The fuse needs

to replaced on MD, MDX, HD, HDX and HDX-D vehicles.

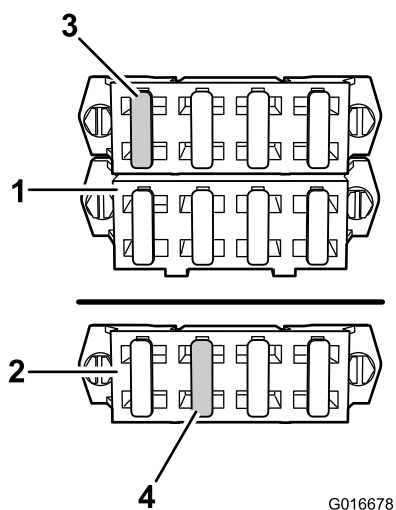


Figure 7

- | | |
|------------------------|--|
| 1. HD fuse block array | 3. Replace with 30A fuse for HD vehicles |
| 2. MD fuse block array | 4. Replace with 30A fuse for MD vehicles |

6

Testing the Horn Function

No Parts Required

Procedure

Install the battery cable removed previously. Turning the ignition key to the on position to energize the machine. Press the horn to verify function.

Replace the hood and engage the restraints to secure it in place.