



Breather Kit

Groundsmaster® 5900 Series Traction Unit

Model No. 120-9895

Installation Instructions

Installation

Loose Parts

Use the chart below to verify that all parts have been shipped.

Procedure	Description	Qty.	Use
1	No parts required	–	Remove the existing breather and breather bracket.
2	Breather kit Breather bracket Hex-head flange bolt (5/16–18 x 1 inch) Flange nut (5/16 inch)	1 1 2 2	Mount the new breather.
3	No parts required	–	Connect the breather hose and the oil-return hose to the breather.
4	Vent hose	1	Assemble and install the vent hose.

Note: This kit is designed to eliminate engine oil that may drip from the engine breather line after the machine has been parked for extended periods of time, such as overnight. This dripping may result in small spots on the floor or ground. If the engine oil continually drips while the engine is running or is pooling under the machine, this kit will not correct the problem; instead, have the engine examined by an Authorized Cummins Engine Repair Center.

1. Move the machine on a level surface.
2. Lower the cutting units, stop the engine, wait for all moving parts to stop, and remove the key from the ignition switch.

⚠ CAUTION

If you leave the key in the ignition switch, someone could accidentally start the engine and seriously injure you or other bystanders.

Remove the key from the ignition switch before you install the kit.

1

Remove the Existing Breather and Breather Bracket

No Parts Required

Procedure

1. Disconnect the breather hose and the oil-return hose from the existing breather (Figure 1).

Note: Do not disconnect the breather hose and the oil-return hose from the engine.

Note: Save the hose clamps to secure the free ends of the breather and oil-return hoses to the new breather.

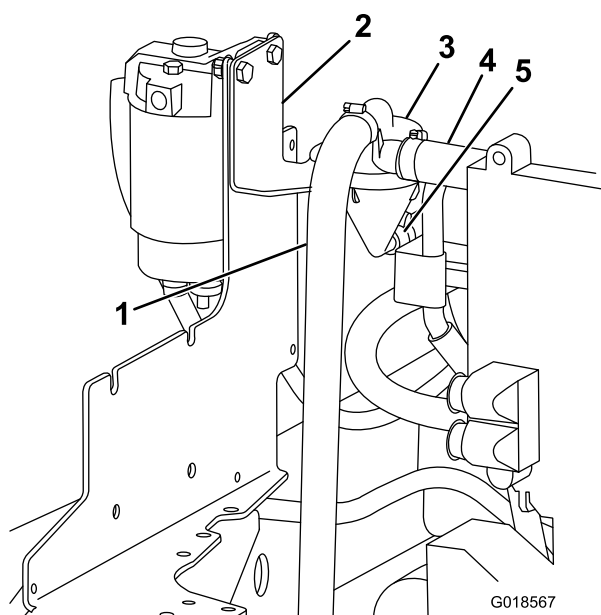


Figure 1

1. Vent hose (existing)
2. Breather bracket (existing)
3. Breather (existing)
4. Breather hose (existing)
5. Oil-return hose (existing)

2. Remove the breather bracket and breather (with the vent hose attached) from the machine and discard them (Figure 1).

Note: The oil-water separator will come loose as you remove the breather bracket and breather. Therefore, ensure that you keep the oil-water separator from falling when you remove the breather bracket and breather.

Note: Save the existing bolts and nuts for securing the new breather bracket and breather (and oil-water separator) to the machine frame.

2

Mounting the New Breather

Parts needed for this procedure:

1	Breather kit
1	Breather bracket
2	Hex-head flange bolt (5/16–18 x 1 inch)
2	Flange nut (5/16 inch)

Procedure

1. Secure the new breather onto the new breather bracket using the 2 hex-head-flange bolts and 2 flange nuts from the kit.

Note: Ensure that the breather is mounted vertically and that the oil-return outlet is directed downward as shown in Figure 2.

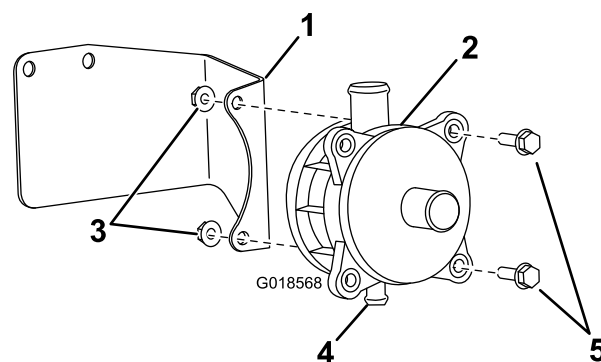


Figure 2

1. New breather bracket
2. New breather
3. Flange nuts
4. Oil-return outlet
5. Hex-head-flange bolts

2. Install the new breather bracket and breather (and the existing oil-water separator) onto the machine frame (where the old breather bracket was mounted) with the 2 existing bolts and 2 existing nuts that you previously removed; refer to Figure 3.

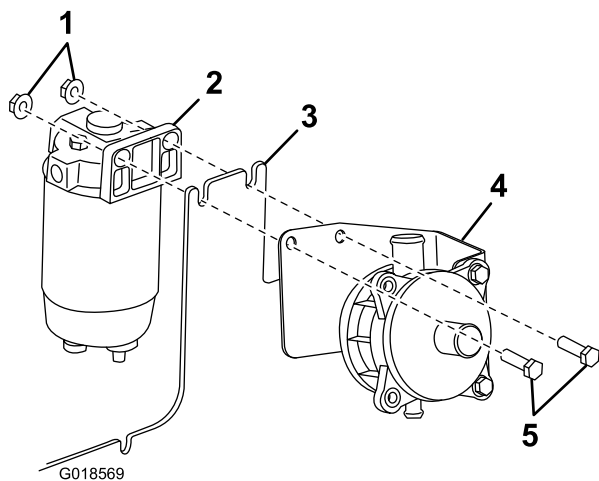


Figure 3

- | | |
|-----------------------------------|--------------------------------------|
| 1. Nuts (existing) | 4. New breather bracket and breather |
| 2. Oil-water separator (existing) | 5. Bolts (existing) |
| 3. Machine frame | |

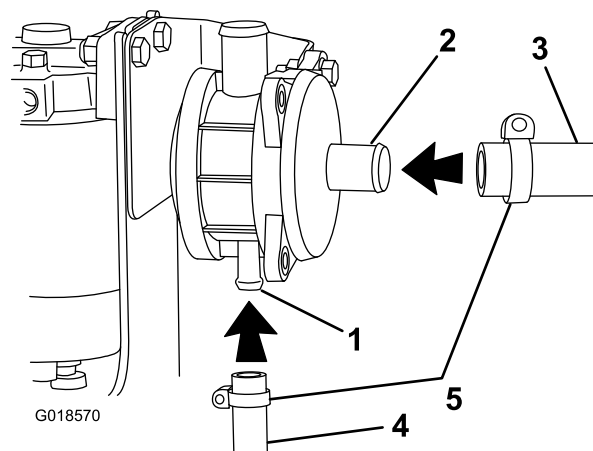


Figure 4

- | | |
|----------------------|--------------------|
| 1. Oil-return outlet | 4. Oil-return hose |
| 2. Breather fitting | 5. Hose clamps |
| 3. Breather hose | |

Note: Ensure that the hose end is fully seated against the collar on the fitting.

Note: Slip a hose clamp over the free end of the oil-drain hose, and secure the hose end to the barbed coupler with the hose clamp.

2. Attach the breather (larger diameter) hose to the fitting on the breather as shown in Figure 4.

Note: Slip a hose clamp over the free end of the breather hose, and secure the hose end to the breather fitting with the hose clamp.

3

Connect the Breather Hose and the Oil-return Hose to the Breather

No Parts Required

Procedure

1. Attach the oil-drain (smaller diameter) hose to the barbed coupler on the breather (Figure 4).

4

Assembling and Installing the Vent Hose

Parts needed for this procedure:

1	Vent hose
---	-----------

Procedure

1. Assemble the vent hose and extension with the connector and the hose clamps as shown in Figure 5.

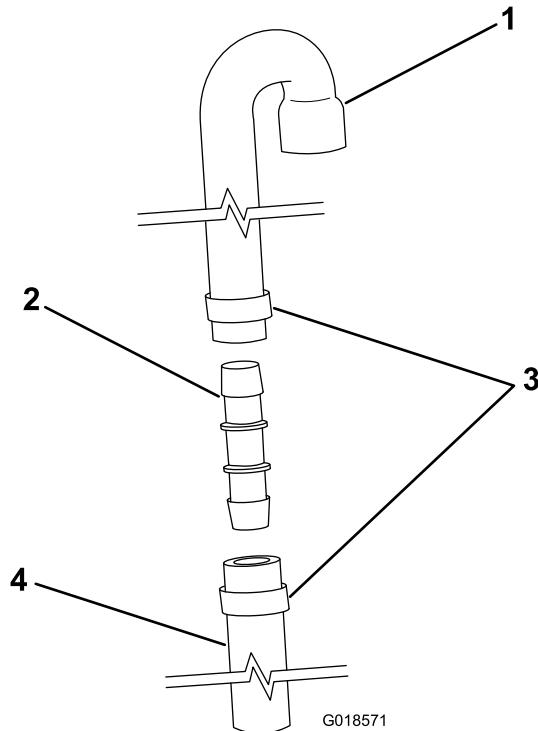


Figure 5

- | | |
|-----------------------------|---------------------------------------|
| 1. Vent hose (from the kit) | 3. Hose clamps (from the kit) |
| 2. Connector (from the kit) | 4. Vent hose extension (from the kit) |

Note: Slip a hose clamp over the ends of the 2 hose pieces to be joined, join the pieces together with the connector, and secure each of the 2 ends with a clamp from the kit.

2. Install the curved end of the vent hose to the breather, and position the vent hose as shown in Figure 6, away from other machine components that could cause the hose to wear out at points of contact.

Note: Ensure that the open end of the vent hose faces downward and is unobstructed.

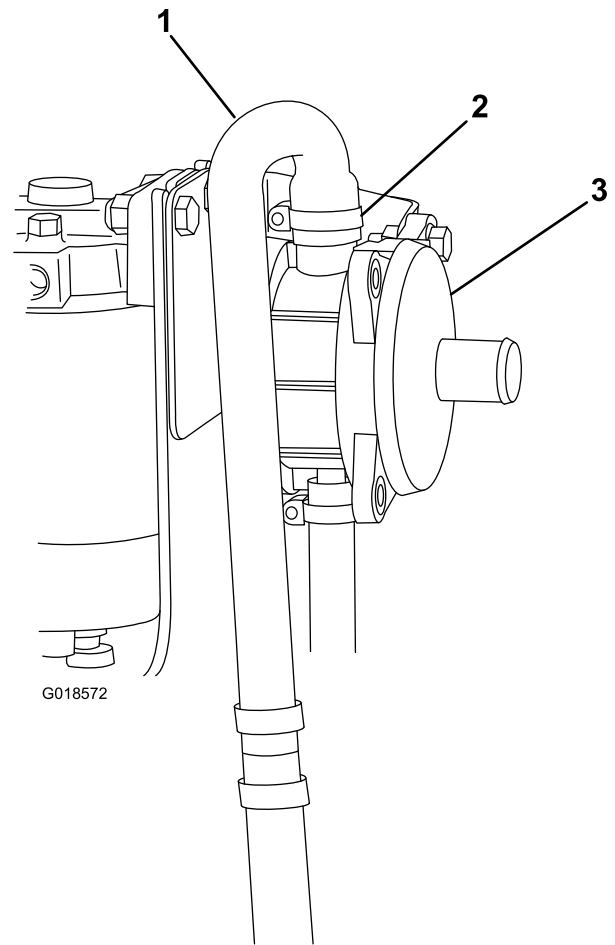


Figure 6

- | | |
|--------------------------|-------------|
| 1. Vent hose | 3. Breather |
| 2. Hose clamp (existing) | |

3. Secure the vent hose with the hose clamp that you previously used.