



Speedometer Kit

Multi Pro 5700-D and 5800 Turf Sprayers

Model No. 106-4839

Form No. 3370-361 Rev A

Installation Instructions

Loose Parts

Use the chart below to verify that all parts have been shipped.

Description	Qty.	Use
Speedometer	1	Install the speedometer.
Speedometer wire harness	1	
10-amp fuse	1	

Note: For Multi Pro 5800 vehicles, a Fuse Block Kit (92-2641) may be required to provide power to the speedometer if there are no open fuse ports and must be purchased separately. Contact your Toro Distributor about purchasing this kit.

Note: For Multi Pro 5700-D vehicles equipped with a Pro Control System, you must disconnect it and remove the control console and the hole grommet before you install the speedometer.

Installing the Speedometer

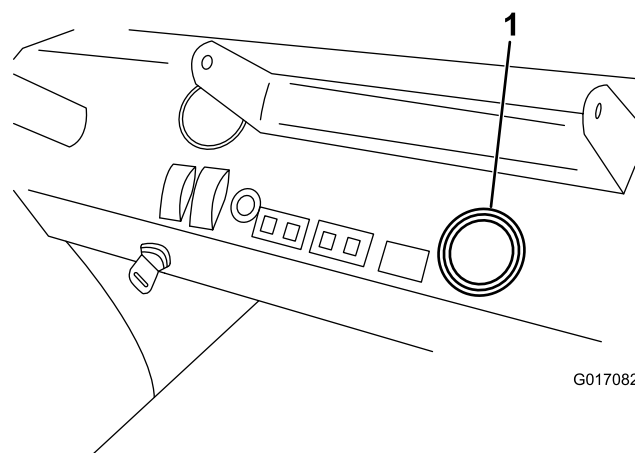
For MP 5700-D

1. Position the machine on a level surface. Set the parking brake, turn the ignition off, and remove the key.

⚠ CAUTION

If you leave the key in the ignition switch, someone could accidentally start the engine and seriously injure you or other bystanders. Remove the key from the ignition switch before you do any maintenance.

2. Install the speedometer in the dash of the vehicle as shown in (Figure 1).



G017082

Figure 1

1. Speedometer

3. Connect the speedometer plug into the speedometer wire harness connector.
4. Install the speedometer wire harness on the right side of the vehicle following the main vehicle wire harness.
5. Unplug the main wire harness from the wheel motor connector.
6. Connect the speedometer wire harness to the wheel motor connector using the 3-pin Weather Pack connector end (Fig. 2).

Note: This connection is near the rear right fender of the vehicle.

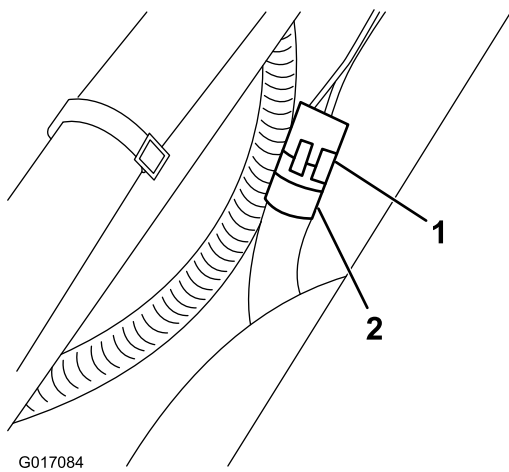


Figure 2

1. 3-pin weather pack connector
2. Wheel motor plug connector

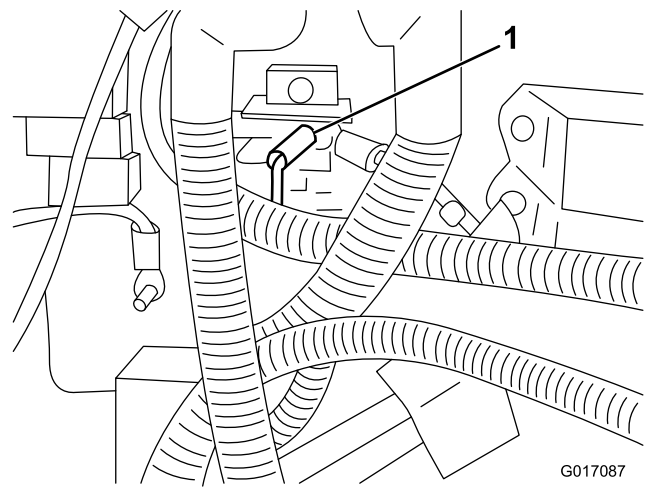


Figure 4

1. Ring terminal on the terminal block

7. Secure the wire harness to the frame, if necessary.
8. Run the wire up to the fuse block.
9. Connect the wire to one of the available terminals from the fuse block (Figure 3).

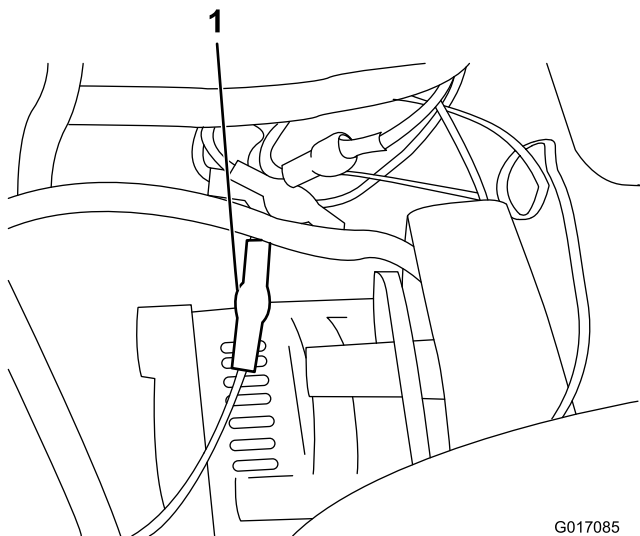


Figure 3

1. Wire connected to a terminal

10. Connect the black wire with a ring terminal to the ground terminal block (Figure 4).

11. Install the 10-amp fuse provided in the kit.

For MP 5800

1. Position the machine on a level surface. Set the parking brake, turn the ignition off, and remove the key.

CAUTION

If you leave the key in the ignition switch, someone could accidentally start the engine and seriously injure you or other bystanders. Remove the key from the ignition switch before you do any maintenance.

2. Install the speedometer in the dash of the vehicle as shown in (Figure 5).

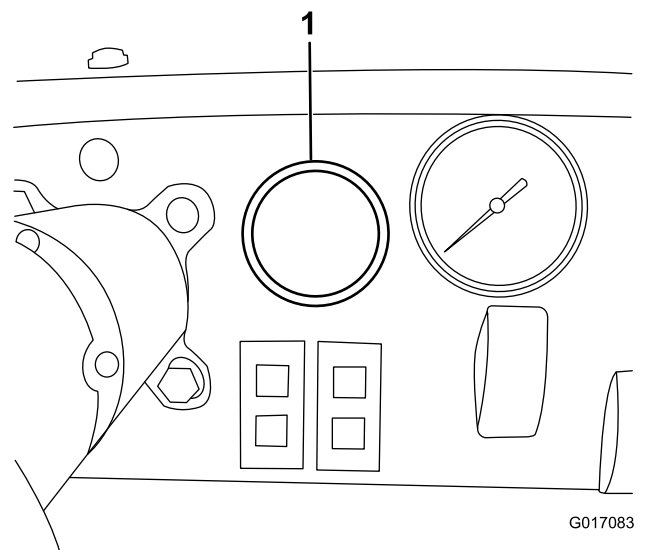


Figure 5

1. Speedometer

3. Connect the speedometer plug into the speedometer wire harness connector.
4. Install the speedometer wire harness on the right side of the vehicle following the main vehicle wire harness.
5. Unplug the main wire harness from the wheel motor connector.
6. Connect the speedometer wire harness to the wheel motor connector using the 3-pin Weather Pack connector end (Fig. 2Figure 6).

Note: This connection is near the rear right fender of the vehicle.

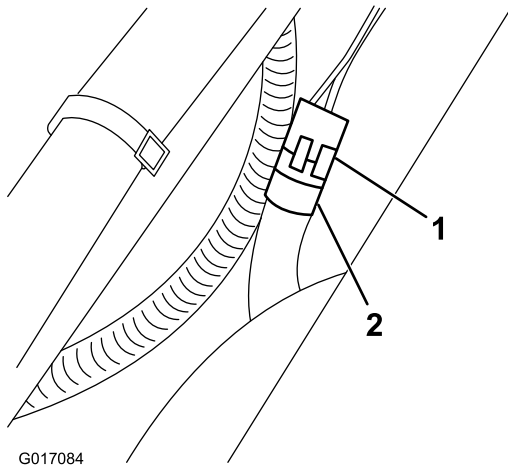


Figure 6

1. 3-pin weather pack connector
2. Wheel motor plug connector

7. Secure the wire harness to the frame, if necessary.
8. Run the wire up to the fuse block.
9. Connect the wire to one of the available terminals from the fuse block (Figure 7).

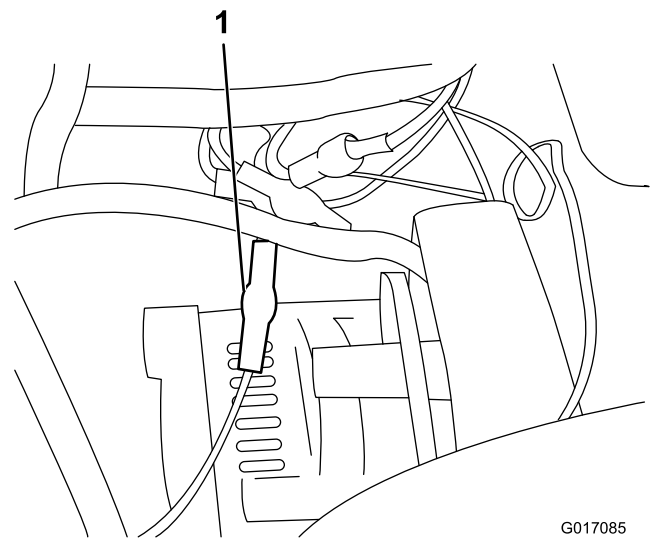


Figure 7

1. Wire connected to a terminal

10. If there are no available power terminals on the existing fuse block, install the additional fuse block (92-2641) and 10-amp fuse (Figure 8).

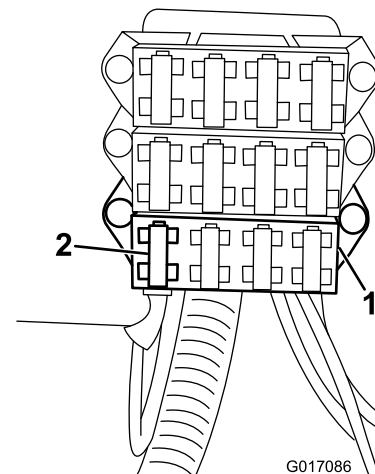


Figure 8

1. Fuse block
2. 10-amp fuse

11. Plug in an available power terminal from the fuse block.
12. Connect the black wire with a ring terminal to the ground terminal block (Figure 9).

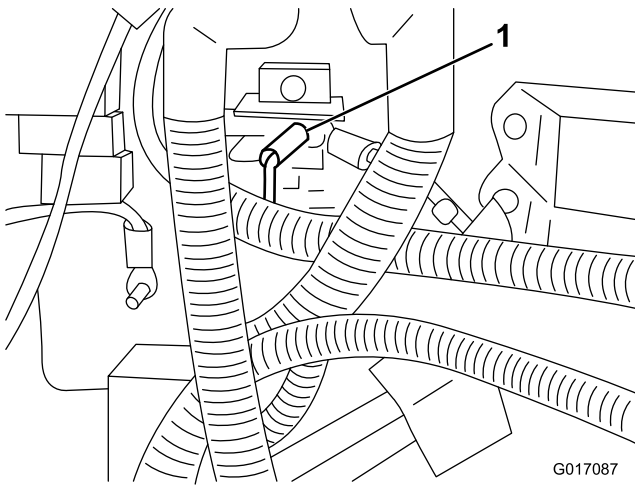


Figure 9

1. Ring terminal on the terminal block

13. If not done already, install the 10-amp fuse provided in the kit.