



# Deluxe Seat Kit

## Z Master® G3 Riding Mower

Model No. 117-6174  
Model No. 78540

### Installation Instructions

# Installation

## Loose Parts

Use the chart below to verify that all parts have been shipped.

Procedure	Description	Qty.	Use
<b>1</b>	No parts required	–	Remove the seat (Domestic and Australian Mowers).
<b>2</b>	No parts required	–	Remove the seat (International Mowers).
<b>3</b>	Seat Belt Kit	1	Install the seat belt.
<b>4</b>	Deluxe suspension seat Flange nut (5/16 inch) Plastic ties	1 4 4	Install the seat (Domestic and Australian Mowers).
<b>5</b>	Deluxe suspension seat Flange nut (5/16 inch) Flange nut (3/8 inch) (International mowers only) Plastic ties	1 4 4 4	Install the seat (International Mowers).
<b>6</b>	Decal	1	Install the decal.

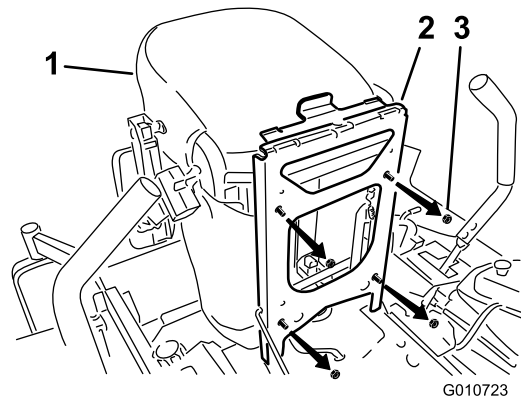
# 1

## Removing the Seat (Domestic and Australian Mowers)

### No Parts Required

### Procedure

1. Unlatch the seat and tip the seat forward.
2. Remove the nuts holding the seat to the mounting frame (Figure 1).
3. Disconnect the wire harness from the seat switch.
4. Remove the seat from the frame and set it aside.



**Figure 1**

- |               |        |
|---------------|--------|
| 1. Seat       | 3. Nut |
| 2. Seat frame |        |

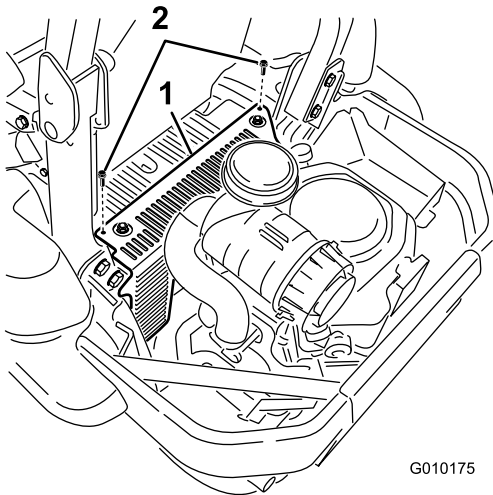
# 2

## Removing the Seat (International Mowers)

### No Parts Required

### Procedure

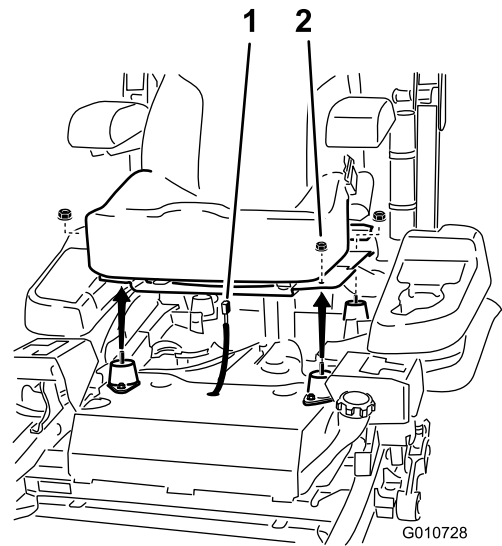
1. Remove the hydraulic unit shroud from the machine (Figure 2). Save hardware and shroud.



**Figure 2**

1. Hydraulic unit shroud
2. Bolts

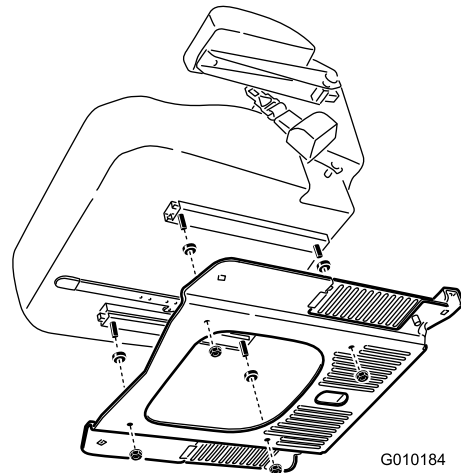
2. Remove the 4 flange nuts holding the seat to the machine (Figure 3).
3. Unplug the harness connector from the seat switch located under the seat towards the front (Figure 3).



**Figure 3**

1. Harness connector
2. Flange nuts

4. Remove the seat plate from the seat by removing the 4 spacers and 4 flange nuts (Figure 4).



**Figure 4**

# 3

## Installing the Seat Belt

### Parts needed for this procedure:

1	Seat Belt Kit
---	---------------

### Procedure

#### ⚠ WARNING

Serious injury or death can happen when the seat belt is used without a roll bar installed.

Do not install the seat belt without a roll bar installed.

If you do not have a rollbar, contact an Authorized Service dealer to obtain the correct Roll Over Protection System (ROPS).

#### ⚠ WARNING

To avoid injury or death from rollover: keep the roll bar in the raised locked position and use the seat belt.

Ensure that the rear part of the seat is secured with the seat latch.

Install the seat belt kit retractor and receiver to the deluxe seat using the 2 bolts (7/16 x 1 inch) (Figure 5).

Torque the bolts to 55 ft.-lb. (74.6 N-m).

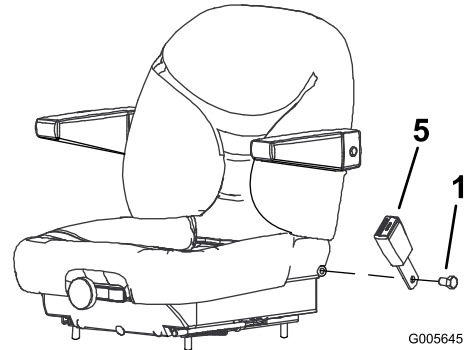
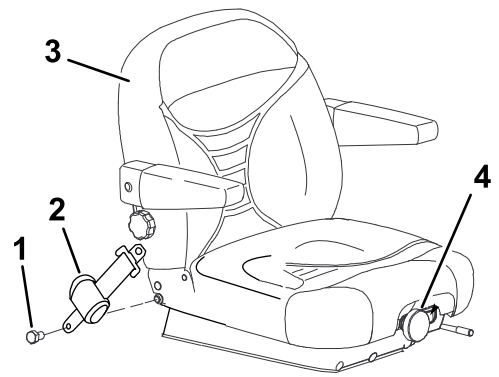


Figure 5

1. Bolt, (7/16 x 1 inch)
2. Seat belt retractor
3. Seat
4. Suspension adjustment knob
5. Seat belt receiver

# 4

## Installing the Seat (Domestic and Australian Mowers)

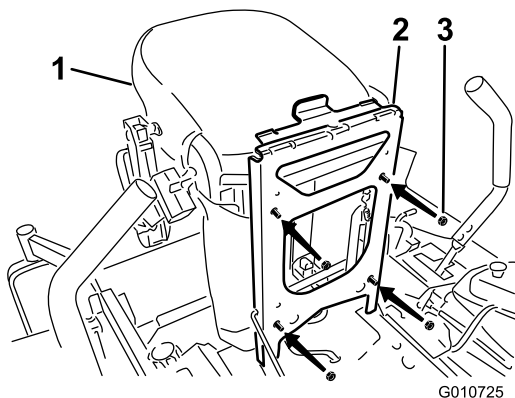
### Parts needed for this procedure:

1	Deluxe suspension seat
4	Flange nut (5/16 inch)
4	Plastic ties

### Procedure

1. Remove the plastic packing covers guarding the seat studs. Do not remove the spacers on the seat studs.
2. Position the new seat into the seat mounting frame (Figure 6).
3. Secure the seat to the seat frame with 4 flange nuts (5/16 inch) (Figure 6).

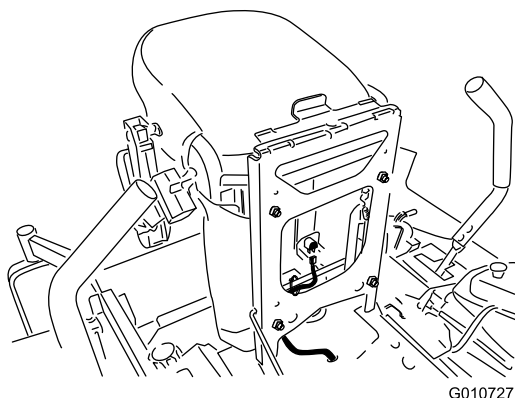
Torque the nuts to 20 ft.-lb. (29.8 N-m).



**Figure 6**

- 1. Seat
- 2. Seat plate
- 3. Flange nut (5/16 inch)

- 4. Plug the harness connector into the seat switch located under the seat (Figure 7).



**Figure 7**

- 5. Move seat to the furthest rear position. Use the plastic ties to attach the wire harness to seat (Figure 7).
- 6. Carefully lower the seat down and ensure the harness does not get pinched. If it does, reposition the plastic ties.

# 5

## Installing the Seat (International Mowers)

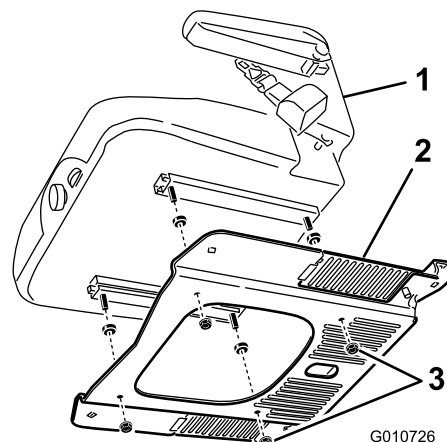
### Parts needed for this procedure:

1	Deluxe suspension seat
4	Flange nut (5/16 inch)
4	Flange nut (3/8 inch) (International mowers only)
4	Plastic ties

### Procedure

- 1. Remove the plastic packing covers guarding the seat studs. Do not remove the spacers on the seat studs.
- 2. Secure the seat plate to the seat with 4 flange nuts (5/16 inch) (Figure 8)

Torque the nuts to 22.5 ft.-lb. (30.5 N-m).



**Figure 8**

- 1. Seat
- 2. Seat plate
- 3. Flange nut (5/16 inch)

- 3. Position the new seat into the seat mounting frame (Figure 9).
- 4. Plug the harness connector into the seat switch located under the seat towards the front.
- 5. Carefully lower the seat down and ensure the harness does not get pinched.
- 6. Install the seat to the machine frame with 4 flange nuts (3/8 inch) (Figure 9).

Torque the nuts to 35 ft.-lb. (47.5 N-m).

# 6

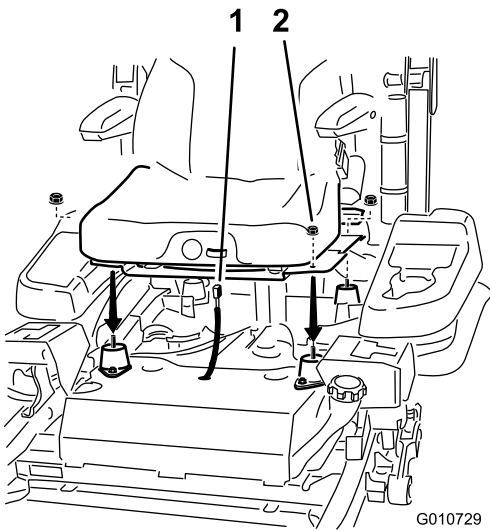
## Installing the Decal

### Parts needed for this procedure:

1	Decal
---	-------

### Procedure

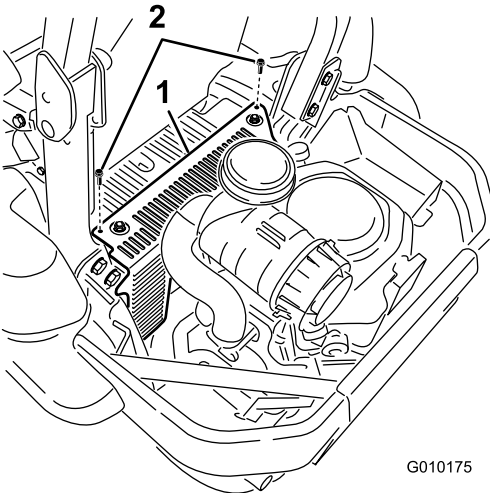
Remove the backing off the decal and place the decal on the back of the seat as shown in Figure 11.



**Figure 9**

1. Harness connector
2. Flange nuts (3/8 inch)

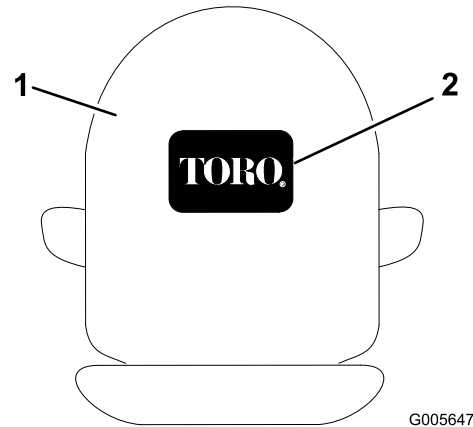
7. Install the hydraulic unit shroud to the machine (Figure 10).



**Figure 10**

1. Hydraulic unit shroud
2. Bolts

8. Move seat to the furthest rear position. Use the plastic ties to attach the wire harness to the seat.
9. Carefully lower the seat down and ensure the harness does not get pinched. If it does, reposition the plastic ties.



**Figure 11**

1. Back of seat
2. Decal

# Operation

## Positioning the Seat

### Changing the Seat Position

The seat can move forward and backward. Position the seat where you have the best control of the machine and are most comfortable.

1. To adjust, push the lever downward to unlock seat (Figure 12).
2. Slide the seat to the desired position and release lever to lock in position.

### Changing the Seat Suspension

The seat can be adjusted to provide a smooth and comfortable ride. Position the seat where you are most comfortable.

To adjust it, turn the knob in front either direction to provide the best comfort (Figure 12).

### Changing the Armrest Position

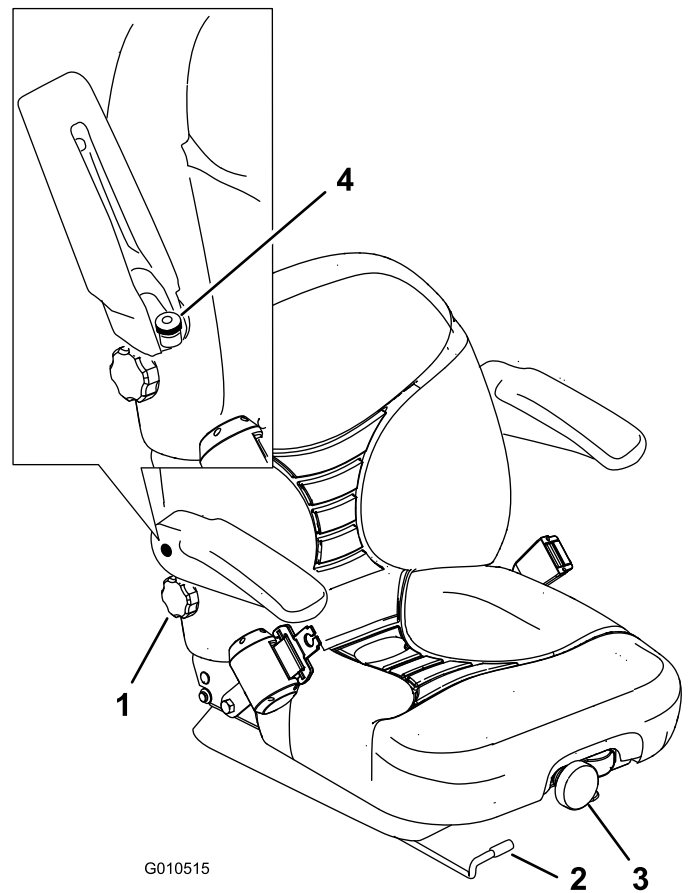
The armrests can be adjusted to provide a comfortable ride. Position the armrests where you are most comfortable.

To adjust it, raise the armrest and turn the knob in either direction to provide the best comfort (Figure 12).

### Changing the Back Position

The back of the seat can be adjusted to provide a comfortable ride. Position the back of the seat where it is most comfortable.

To adjust it, turn the knob, under the right-side arm rest, in either direction to provide the best comfort (Figure 12).



**Figure 12**

- |                                   |                            |
|-----------------------------------|----------------------------|
| 1. Back rest knob                 | 3. Seat suspension knob    |
| 2. Seat position adjustment lever | 4. Armrest adjustment knob |

**Notes:**



**Count on it.**