



Spellbrook, Bishop’s Stortford, Herts. CM23 4BU, England.
Telephone: 01279 723444 Fax: 01279 723821
E-mail: hayter.sales@toro.com / uk.service@toro.com Web: www.toro.com / www.hayter.co.uk

FITTING AND OPERATION INSTRUCTION SHEET
GROOVED FRONT ROLLER MK3
Model 02823
For Cutterhead Models 02800, 02801, 02802 and 02803
ORIGINAL VERSION (EN)
Serial No. From 310000001

CONTENTS

Contents	Page No.
Introduction	1
Safety precautions	2
Delivery Checklist	2 - 3
Specifications & Weights	3
Assembly	4
Floating MK3 Cutterhead	5
Warranty	6

INTRODUCTION

The Grooved Front Roller MK3 is designed for fitment to the TORO MK3 Cutterhead. The Grooved Front Roller Mk3 can be fitted with a 4, 6, 8 or 10 bladed cutting cylinder (200mm diameter). The way in which this unit is operated and maintained will have a profound effect on performance and reliability.

The Grooved Front Roller MK3 should not be fitted to any other machines than those stated above.

This instruction sheet should be regarded as part of the machine, as it gives essential information regarding machine safety, specifications, assembly and maintenance.

For all other information refer to your Operator’s Manual and Parts List.

In pursuit of continuous product development, TORO reserve the right to alter specifications without notice.

Left and Right: Throughout this instruction sheet refers to the mower when looking in the direction of forward travel.

SAFETY PRECAUTIONS



**THIS SYMBOL MEANS BE ALERT! YOUR SAFETY IS INVOLVED.
EXERCISE GREAT CARE AND FOLLOW THE ADVICE GIVEN TO AVOID POTENTIAL
HAZARDOUS SITUATIONS**



Before working on the machine it is essential that you read and understand the Safety Precautions as shown in the Operator's Manual.



Before working on the machine it is essential that :

- The engine is switched off.
- The parking brake is applied.
- There is no pressure in the hydraulic system.
- The cutterheads are fully down on the ground.
- Disconnect the battery terminals and ensure no contact is made between the terminals and machines metalwork.



WARNING: PREVENT ACCIDENTS - Take care to avoid the sharp edges of the cutting cylinder and bottom blade when lifting or working on the cutterhead.



The cutterhead is heavy - It is recommended that suitable lifting equipment be used when removing the cutterhead from the carton and during installation.



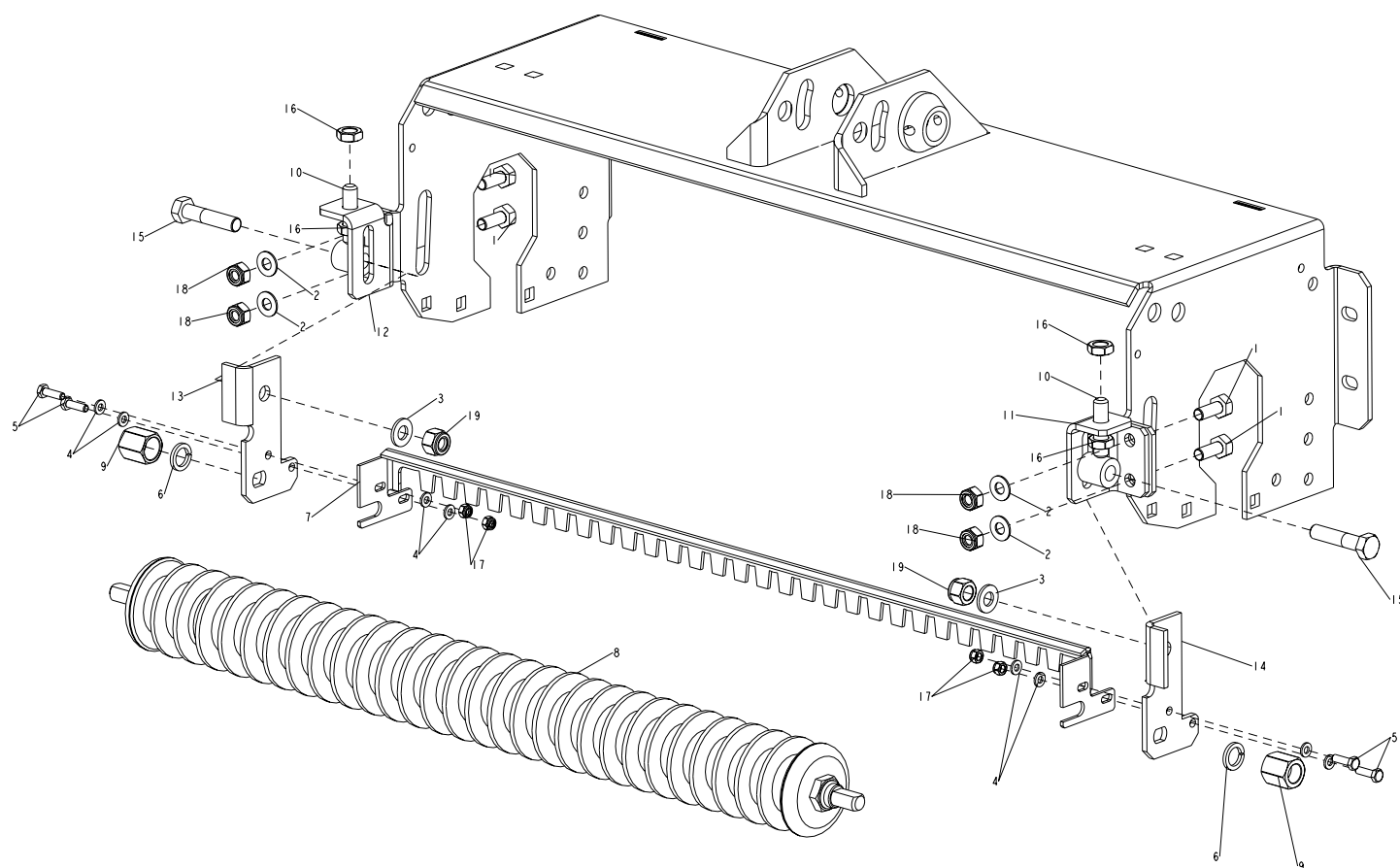
WARNING: ALWAYS SEEK PROFESSIONAL ADVICE FROM YOUR LOCAL AUTHORISED DEALER IF, AFTER STUDYING THIS, YOU ARE UNSURE HOW TO FIT THIS KIT.

PARTS LIST

Check that all parts are delivered correctly. Remove the components from the carton and check that all loose items have been supplied correctly. Refer to the delivery checklist below. If any items are missing contact your local dealer.

ITEM NO.	DESCRIPTION	PART NO.	QTY
1	SETSCREW M10*25	09395	4
2	WASHER M10*21*1.45 FORMB LIGHT	09479	4
3	WASHER PLAIN M12	HY09485	2
4	WASHER PLAIN M6*12*1.6	09472	8
5	SETSCREW M6*20	09363	4
6	WASHER SPRING M16	HY4200	2
7	SCRAPER GROOVED ROLLER	882003W	1
8	ROLLER GROOVED MK3	882002	1
9	NUT ROLLER	876062	2
10	ROLLER ADJUSTER W/A	881011	2
11	BRACKET FRONT ROLLER LH	881013W	1
12	BRACKET FRONT ROLLER RH	881014W	1
13	PLATE ROLLER ADJUSTER RH	881015W	1
14	PLATE ROLLER ADJUSTER LH	881016W	1
15	SETSCREW M12*55	ZDH1L055U	2
16	NUT M12 LOCK	ZNL1L000U	4
17	NUT M6 NYLOC 'T' TYPE	09438	4
18	NUT M10 NYLOC	ZNN1J000U	4
19	NUT M12 NYLOC	ZNN1L000U	2
20	LABEL SERIAL NUMBER	111-4031	1

PARTS LIST



SPECIFICATION

MODEL: 02823
TYPE: Grooved Roller
DIAMETER: 79mm
WEIGHT: 10 kg

ASSEMBLY

Assemble the grooved front roller to the MK3 cutterhead by following the steps below:

1. Push the threaded end of the roller (item 8) through plate (item 14) adding spring washer (item 6) and nut roller (item 9). Leave very loose.
2. Repeat the above procedure for the other end of the roller.
3. Push the scraper bar (item 7) onto the flats of the roller end and tighten the nut rollers (item 9) finger tight.
4. Add one locknut (item 16) to each end of the exposed thread of the roller adjuster (item 10).
5. Take the bracket (item 11) and fix to the plate with a roller adjuster (item 10) by setscrew (item 15), nut (item 19) and washer (item 3) after pushing the thread of the roller adjuster through the hole in the bracket.
6. Repeat the above procedure for the other end of the roller.
7. Add a second locknut (item 16) to each end of the exposed threads of the roller adjuster (item 10).
8. Locate the scraper bar screw (item 5) and push it through one plate (item 14), then through the hole in the scraper bar (item 7) and fasten with nut (item 17) and washer (item 4). Repeat this procedure but use the slot in scraper bar (item 7).
9. Repeat the above procedure for the other end of the roller.
10. Move the complete assembly onto the cutterbar and fix with M10*25 setscrews (item 1), nuts (item 18) and washers (item 2).
11. After adjusting the roller to the correct height, tighten all nuts to the following torque settings:

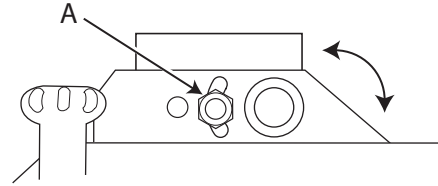
Item 1 - tighten to 45 Nm (33 lbs.ft)
Item 9 - tighten to 200 Nm (147.5 lbs.ft)
Item 17 - tighten to 10 Nm (7.4 lbs.ft)
Item 16 & 19 - tighten to 70 Nm (51.6 lbs.ft)
12. Grease the roller grease nipples until grease is expelled around the end caps.

NOTE: Toro recommend an anti-seize grease known as BP Keenomax L2.
13. Fix the serial label (item 20) adjacent to the cutterhead serial number label.

FLOATING MK3 CUTTERHEAD

Pivot Plate Fixing:

Secure the bolt in the rear “floating” slot position as shown.



Height of Cut Adjustment:

The height of cut is gauged by the position of the front and rear rollers.

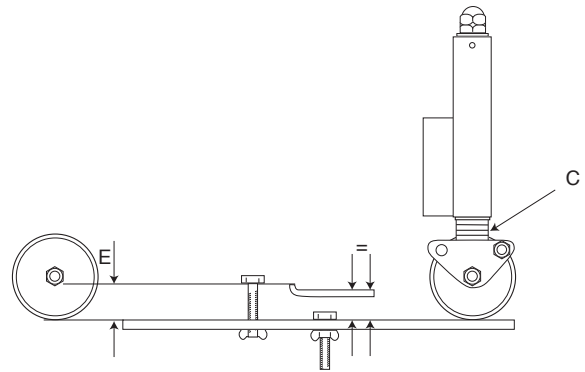
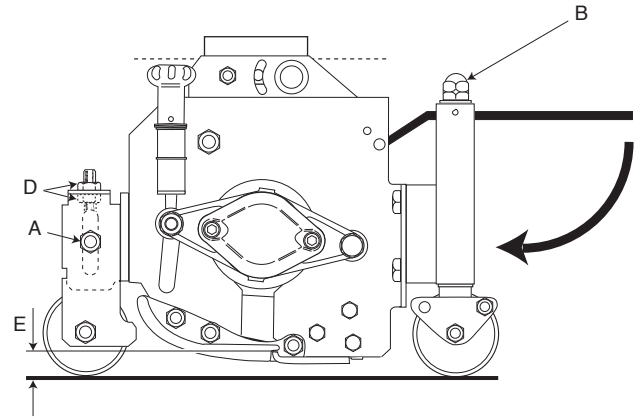
To alter the rear roller position, turn the adjusting nut assembly ‘B’ both ends clockwise to decrease height of cut ‘E’ or anti-clockwise to increase the height of cut ‘E’.

IMPORTANT: Prevent damage - do not attempt to unlock the nut assemblies ‘B’.

To alter the front roller position, slacken nut ‘A’ then release and turn the adjusting nuts ‘D’ both ends clockwise to increase the height of cut, or anti-clockwise to decrease the height of cut.

Ensure that all cutterheads are set at the same height of cut by referring to the indicator rings ‘C’ and using the height of cut gauge as shown across the full width of each cutterhead.

Tighten nuts ‘D’ and ‘A’ both ends.



Front Roller Parked Position:

When changing from floating cutterheads to fixed, the front roller assembly must be removed.



The Toro Total Coverage Guarantee

A Limited Warranty

Conditions and Products Covered

The Toro® Company and its affiliate, Toro Warranty Company, pursuant to an agreement between them, jointly warrant your Toro Commercial product ("Product") to be free from defects in materials or workmanship for two years or 1500 operational hours*, whichever occurs first. This warranty is applicable to all products with the exception of Aerators (refer to separate warranty statements for these products). Where a warrantable condition exists, we will repair the Product at no cost to you including diagnostics, labor, parts, and transportation. This warranty begins on the date the Product is delivered to the original retail purchaser.

* Product equipped with an hour meter.

Instructions for Obtaining Warranty Service

You are responsible for notifying the Commercial Products Distributor or Authorized Commercial Products Dealer from whom you purchased the Product as soon as you believe a warrantable condition exists. If you need help locating a Commercial Products Distributor or Authorized Dealer, or if you have questions regarding your warranty rights or responsibilities, you may contact us at:

Commercial Products Service Department
Toro Warranty Company
8111 Lyndale Avenue South
Bloomington, MN 55420-1196
E-mail: commercial.warranty@toro.com

Owner Responsibilities

As the Product owner, you are responsible for required maintenance and adjustments stated in your Operator's Manual. Failure to perform required maintenance and adjustments can be grounds for disallowing a warranty claim.

Items and Conditions Not Covered

Not all product failures or malfunctions that occur during the warranty period are defects in materials or workmanship. This warranty does not cover the following:

- Product failures which result from the use of non-Toro replacement parts, or from installation and use of add-on, or modified non-Toro branded accessories and products. A separate warranty may be provided by the manufacturer of these items.
- Product failures which result from failure to perform recommended maintenance and/or adjustments. Failure to properly maintain your Toro product per the Recommended Maintenance listed in the *Operator's Manual* can result in claims for warranty being denied.
- Product failures which result from operating the Product in an abusive, negligent or reckless manner.
- Parts subject to consumption through use unless found to be defective. Examples of parts which are consumed, or used up, during normal Product operation include, but are not limited to, brakes pads and linings, clutch linings, blades, reels, bed knives, tines, spark plugs, castor wheels, tires, filters, belts, and certain sprayer components such as diaphragms, nozzles, and check valves, etc.

- Failures caused by outside influence. Items considered to be outside influence include, but are not limited to, weather, storage practices, contamination, use of unapproved coolants, lubricants, additives, fertilizers, water, or chemicals, etc.
- Normal noise, vibration, wear and tear, and deterioration.
- Normal "wear and tear" includes, but is not limited to, damage to seats due to wear or abrasion, worn painted surfaces, scratched decals or windows, etc.

Parts

Parts scheduled for replacement as required maintenance are warranted for the period of time up to the scheduled replacement time for that part. Parts replaced under this warranty are covered for the duration of the original product warranty and become the property of Toro. Toro will make the final decision whether to repair any existing part or assembly or replace it. Toro may use remanufactured parts for warranty repairs.

Note Regarding Deep Cycle Battery Warranty:

Deep cycle batteries have a specified total number of kilowatt-hours they can deliver during their lifetime. Operating, recharging, and maintenance techniques can extend or reduce total battery life. As the batteries in this product are consumed, the amount of useful work between charging intervals will slowly decrease until the battery is completely worn out. Replacement of worn out batteries, due to normal consumption, is the responsibility of the product owner. Battery replacement may be required during the normal product warranty period at owner's expense.

Maintenance is at Owner's Expense

Engine tune-up, lubrication cleaning and polishing, replacement of Items and Conditions Not Covered filters, coolant, and completing Recommended Maintenance are some of the normal services Toro products require that are at the owner's expense.

General Conditions

Repair by an Authorized Toro Distributor or Dealer is your sole remedy under this warranty.

Neither The Toro Company nor Toro Warranty Company is liable for indirect, incidental or consequential damages in connection with the use of the Toro Products covered by this warranty, including any cost or expense of providing substitute equipment or service during reasonable periods of malfunction or non-use pending completion of repairs under this warranty. Except for the Emissions warranty referenced below, if applicable, there is no other express warranty.

All implied warranties of merchantability and fitness for use are limited to the duration of this express warranty. Some states do not allow exclusions of incidental or consequential damages, or limitations on how long an implied warranty lasts, so the above exclusions and limitations may not apply to you.

This warranty gives you specific legal rights, and you may also have other rights which vary from state to state.

Countries Other than the United States or Canada

Customers should contact their Toro Distributor (Dealer) to obtain guarantee policies for your country, province, or state. If for any reason you are dissatisfied with your Distributor's service or have difficulty obtaining guarantee information, contact the Toro importer. If all other remedies fail, you may contact us at Toro Warranty Company.