



Count on it.

Parts Catalog

Eductor Kit

Multi-Pro® 5800 Turf Sprayer

Model No. 41612—Serial No. 311000301 and Up

Ordering Replacement Parts

To order replacement parts, please supply the part number, the quantity, and the description of each part desired.

Understanding Reference Numbers

Each identified part in an illustration has a reference number. The reference number for a part also appears in the parts list, along with other information about the part.

This catalog uses two special reference number formats, one to indicate parts in a service assembly and another to indicate the quantity of a given part in an illustration.

Service Assembly Reference Numbers

Parts in service assemblies have reference numbers in the form a:b. The a represents the reference number of the entire service assembly and the b represents a sequential number unique to each part within the service assembly.

For example, a wheel assembly might be identified by reference number 6, the tire by 6:1, the valve by 6:2, and the wheel by 6:3. When you order the assembly identified by reference number 6, you receive all parts identified by reference numbers 6:1, 6:2, and 6:3. However, you may also order any part individually. Reference numbers of this type appear in illustration and in parts lists.

Reference Numbers Indicating Quantity

In an illustration, if a reference number indicates more than one part, the reference number has the form nX y. The n represents the quantity of the part, the X is the multiplication symbol, and the y represents the reference number.

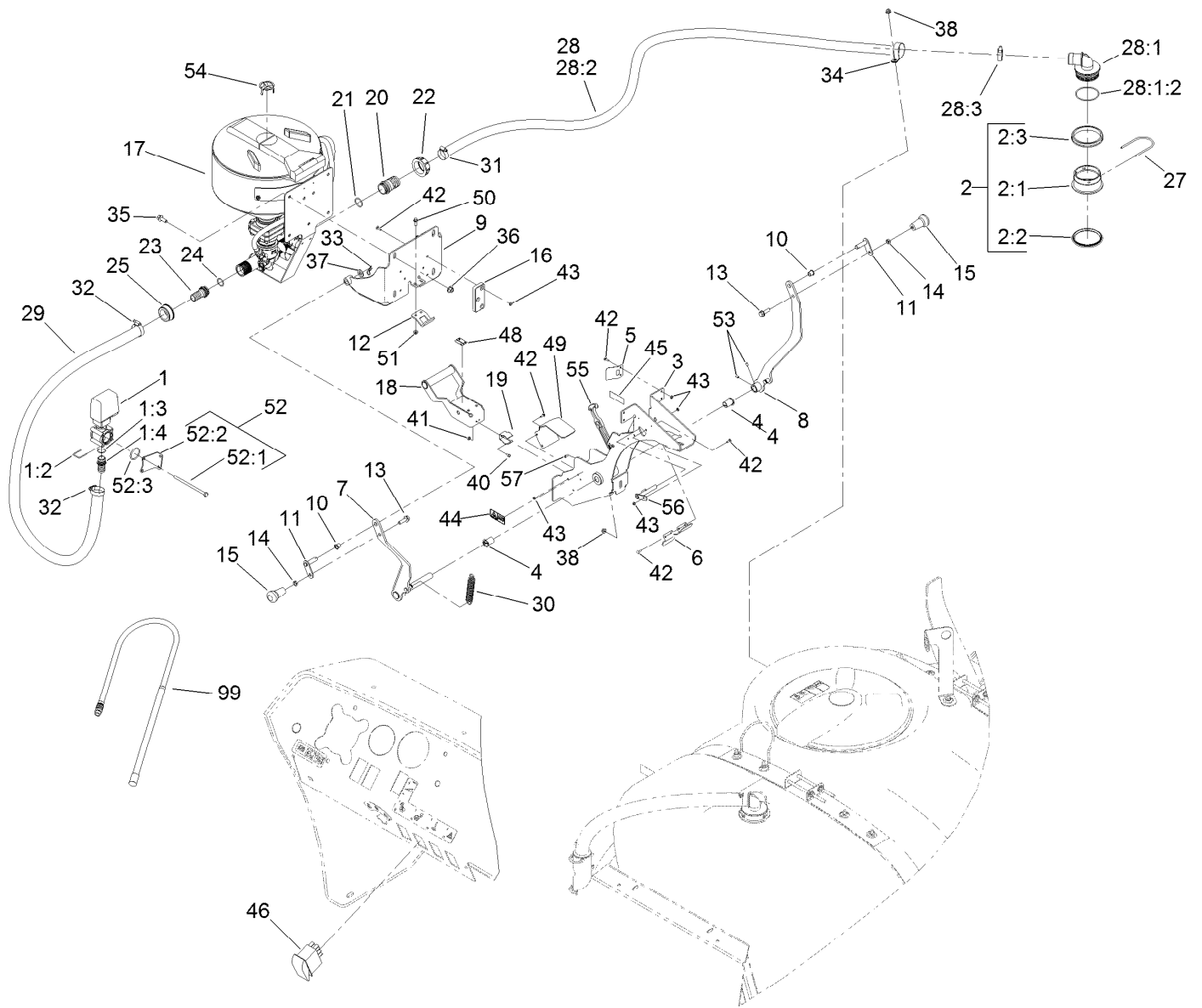
For example, in an illustration, the reference number 2X 37 means that two of the parts identified by reference number 37 are indicated.

List of Abbreviations

AR: as required	HOC: height-of-cut	RRB: rear roller brush
ASM: assembly	HSBH: hex socket button head	SFH: slotted fillister head
BBC: blade brake control	HSFH: hex socket flat head	SHH: slotted hex head
BHTF: button head thread forming	HSH: hex socket head	SHWH: slotted hex washer head
CARR: carriage	HWH: hex washer head	SPH: slotted pan head
CCW: counter clockwise	HWTF: hex washer head thread forming	SQH: square head
CW: clockwise	HYD: hydraulic	SRH: slotted round head
DEG: degrees	LH: left hand	STD: standard
DPA: Dual Point Adjustment	LP: Liquid Propane	TAP: self tapping
ECM: electronic control module	NI: nylon insert	TTH: torx truss head
EXT: external	NPTF: national pipe thread fine	
FH: flat head	PFH: phillips flat head	
GA: gauge	PPH: phillips pan head	
HD: heavy-duty	PPHTF: phillips pan head thread forming	
HF: hex flange	PRH: phillips round head	
HH: hex head	PTH: phillips truss head	
HHF: hex head flange	PTO: power-take-off	
HHFTF: hex head flange thread forming	RH: right hand	
HJ: hex jam	ROPS: roll-over protection system	
HLH: hex lag head		

Contents

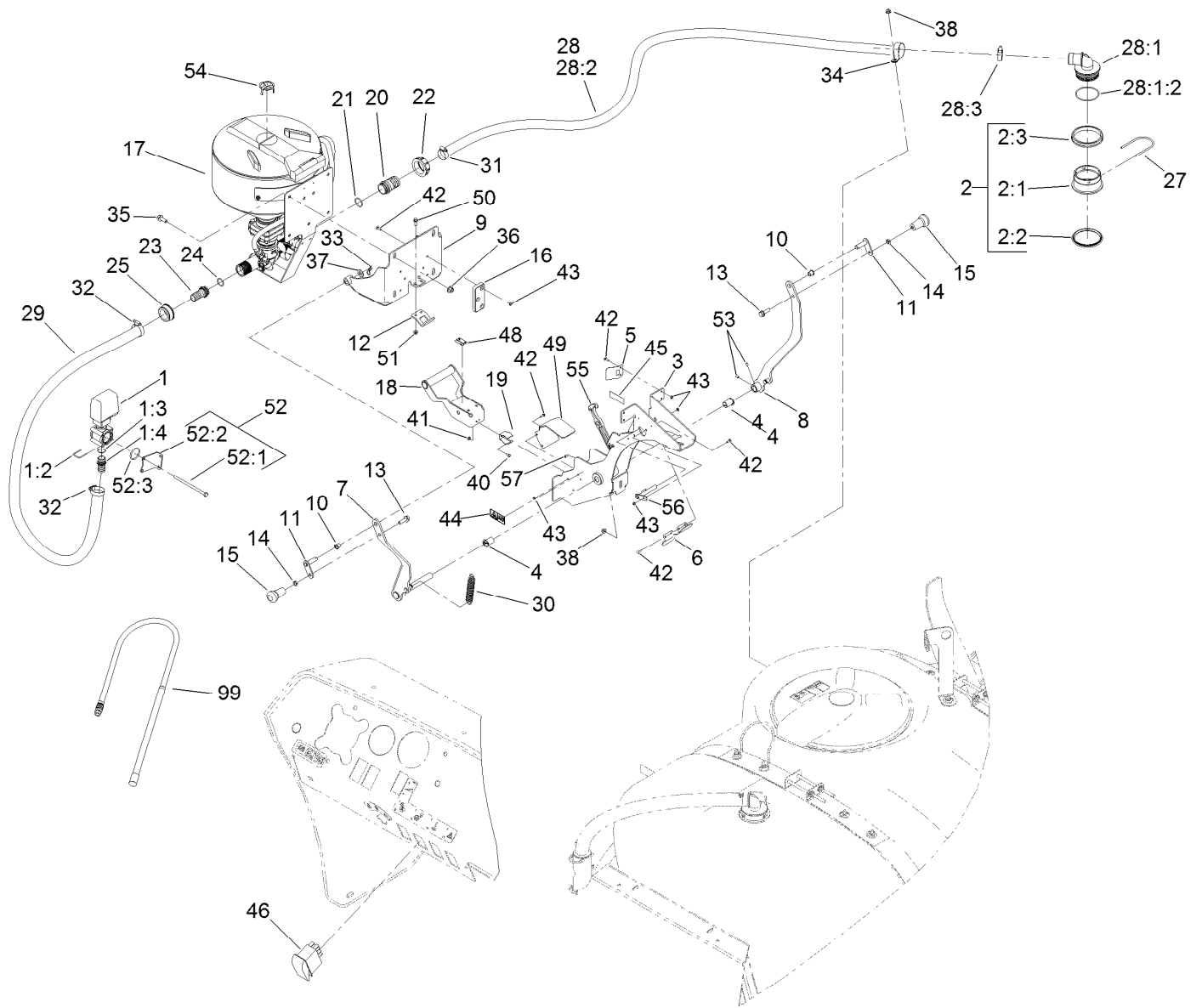
Eductor Kit..... 4
Cleanload Assembly No. 119-0477..... 6



Educator Kit

Ref.	Part Number	Qty.	Description	Ref.	Part Number	Qty.	Description
1	119-0488	1	Valve ASM	14	3218-3	2	Nut-Jam
1:2	119-4862	1	Fork	15	99-7981	2	Knob-Grip, Soft
1:3	119-4868	1	O-Ring	16	119-4963	2	Pad-Wear
1:4	117-7992	1	Hosebarb	17	119-0477	1	Cleanload ASM
2	117-7851	1	Bulkhead ASM	18	120-8689-03	1	Handle-ASM
2:1	117-7850	1	Fitting-Bulkhead	19	119-4937	1	Clip-Spring
2:2	100-8646	1	Gasket-Bulkhead	20	117-7877	1	Hosebarb
2:3	100-8647	1	Nut-Bulkhead	21	117-7922	1	O-Ring
3	120-8643-03	1	Educator-Mount	22	117-7879	1	Nut-Fly
4	100-8541	2	Bushing-A Arm	23	117-7973	1	Hosebarb
5	119-4951	2	Tab-Spring	24	110-5239	1	O-Ring
6	119-4962	1	Plate-Strike	25	110-5247	1	Nut-Fly
7	119-4907-03	1	Arm-Pivot, LH	27	117-7996	1	Fork
8	119-4908-03	1	Arm-Pivot, RH	28		1	Main Educator Hose ASM ●
9	119-4912-03	1	Pivot Plate ASM	28:1	117-7870	1	Hosebarb ASM
10	256-257	2	Bushing-Nyliner	28:1:2	100-6989	1	O-Ring
11	120-0718	2	Pivot-Pin	28:2	119-0474	1	Hose-Main Supply
12	119-4928	1	Bracket-Latch	28:3	41327	1	Clamp-Hose
13	3234-24	2	Screw-HHF	29	119-0473	1	Hose-Supply

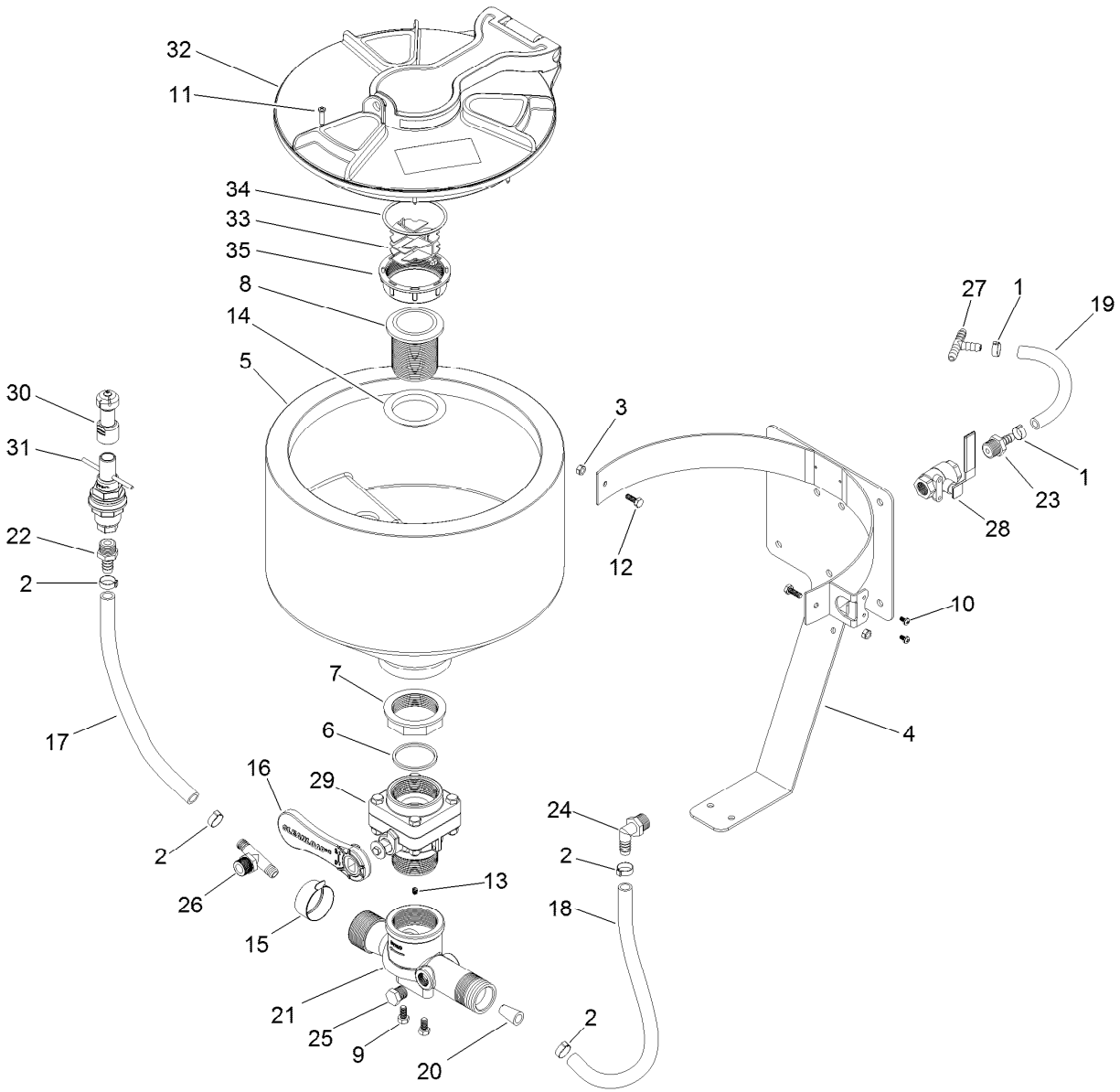
● Not serviced separately



Eductor Kit (continued)

Ref.	Part Number	Qty.	Description	Ref.	Part Number	Qty.	Description
30	120-0722	2	Spring-Extension	46	100-8490	1	Switch-Rocker
31	41327	1	Clamp-Hose	48	119-4988	1	Decal-Mp, Lock
32	2412-34	2	Clamp-Hose	49	120-8637	1	Plate-Guide
33	3290-467	2	Pin-Hair	50	3234-4	2	Screw-HHF
34	2412-96	1	Clamp-R	51	32128-33	2	Nut-HF
35	3234-11	4	Screw-HHF	52		1	Bracket Mounting Kit ●
36	32128-43	4	Nut-Flange	52:1	119-4879	4	Screw-HH
37	106-9888	2	Washer-Flat	52:2	119-4952	1	Bracket-Mount
38	104-8300	2	Nut-Flange, NI	52:3	119-4870	1	O-Ring
40	3250-12	2	Screw-PPH	53	3245-41	2	Screw-HSH
41	3296-2	2	Nut-Lock, NI	54	120-0765	1	Strainer-Eductor
42	1-807533	19	Bolt-CARR	55	115-8215	1	Draw Latch ASM
43	3296-12	19	Nut-Lock, NI	56	120-8640	1	Latch-Rod
44	93-6674	2	Decal-Warning	57	115-9830	3	Screw-HSBH
45	119-4986	1	Decal-Regulatory	99	120-0651	1	Lance-Eductor

● Not serviced separately



Cleanload Assembly No. 119-0477

Ref.	Part Number	Qty.	Description
1	120-8650	2	Clamp-Hose
2	120-8651	4	Clamp-Hose
3	120-8652	2	Nut-Hex
4	120-8653	1	Mount-Frame, Back
5	120-8654	1	Tank-5.8 Gallon
6	120-8655	1	Gasket
7	120-8656	1	Ring-Locking
8	120-8657	1	Head-Drain
9	120-8658	2	Screw-HH
10	120-8659	2	Screw
11	120-8660	8	Screw
12	120-8661	2	Bolt
13	120-8662	1	Screw-Set
14	120-8663	1	Gasket
15	120-8664	1	Fitting-Cap
16	120-8665	1	Handle-Valve, Ball
17	120-8666	1	Hose-Bottle, Rinse
18	120-8667	1	Hose-Valve, Feeder

Ref.	Part Number	Qty.	Description
19	120-8668	1	Hose
20	120-8669	1	Orifice-Jet, Agitator
21	120-8670	1	Eductor-Cleanload
22	120-8671	1	Fitting-Hosebarb
23	120-8672	1	Fitting-Hosebarb
24	120-8673	1	Fitting-Elbow, Hosebarb
25	120-8674	1	Fitting-Plug
26	120-8675	1	Fitting-Tee
27	120-8676	1	Fitting-Tee
28	120-8677	1	Valve
29	120-8678	1	Valve-Ball
30	120-8679	1	Proclean Bottlewash ASM
31	120-8680	1	Rinse-Valve
32	120-8681	1	TI-Ring, S/A
33	120-8682	1	Breather-Labyrinth
34	120-8683	1	O-Ring-Breather
35	120-8684	1	Nut-Breather

Notes:



Count on it.