



**Count on it.**

**Parts Catalog**

**Z400 Z Master®**

**With 52in 7-Gauge Side Discharge Mower**

**Model No. 74449—Serial No. 280000001 and Up**

# Ordering Replacement Parts

To order replacement parts, please supply the part number, the quantity, and the description of each part desired.

## Understanding Reference Numbers

Each identified part in an illustration has a reference number. The reference number for a part also appears in the parts list, along with other information about the part.

This catalog uses two special reference number formats, one to indicate parts in a service assembly and another to indicate the quantity of a given part in an illustration.

## Service Assembly Reference Numbers

Parts in service assemblies have reference numbers in the form a:b. The a represents the reference number of the entire service assembly and the b represents a sequential number unique to each part within the service assembly.

For example, a wheel assembly might be identified by reference number 6, the tire by 6:1, the valve by 6:2, and the wheel by 6:3. When you order the assembly identified by reference number 6, you receive all parts identified by reference numbers 6:1, 6:2, and 6:3. However, you may also order any part individually. Reference numbers of this type appear in illustration and in parts lists.

## Reference Numbers Indicating Quantity

In an illustration, if a reference number indicates more than one part, the reference number has the form nX y. The n represents the quantity of the part, the X is the multiplication symbol, and the y represents the reference number.

For example, in an illustration, the reference number 2X 37 means that two of the parts identified by reference number 37 are indicated.

# List of Abbreviations

**AR:** as required

**ASM:** assembly

**BBC:** blade brake control

**BHTF:** button head thread forming

**CARR:** carriage

**CCW:** counter clockwise

**CW:** clockwise

**DEG:** degrees

**DPA:** Dual Point Adjustment

**ECM:** electronic control module

**EXT:** external

**FH:** flat head

**GA:** gauge

**HD:** heavy-duty

**HF:** hex flange

**HH:** hex head

**HHF:** hex head flange

**HHFTF:** hex head flange thread forming

**HJ:** hex jam

**HLH:** hex lag head

**HOC:** height-of-cut

**HSBH:** hex socket button head

**HSFH:** hex socket flat head

**HSH:** hex socket head

**HWH:** hex washer head

**HWHTF:** hex washer head thread forming

**HYD:** hydraulic

**LH:** left hand

**LP:** Liquid Propane

**NI:** nylon insert

**NPTF:** national pipe thread fine

**PFH:** phillips flat head

**PPH:** phillips pan head

**PPHTF:** phillips pan head thread forming

**PRH:** phillips round head

**PTH:** phillips truss head

**PTO:** power-take-off

**RH:** right hand

**ROPS:** roll-over protection system

**RRB:** rear roller brush

**SFH:** slotted fillister head

**SHH:** slotted hex head

**SHWH:** slotted hex washer head

**SPH:** slotted pan head

**SQH:** square head

**SRH:** slotted round head

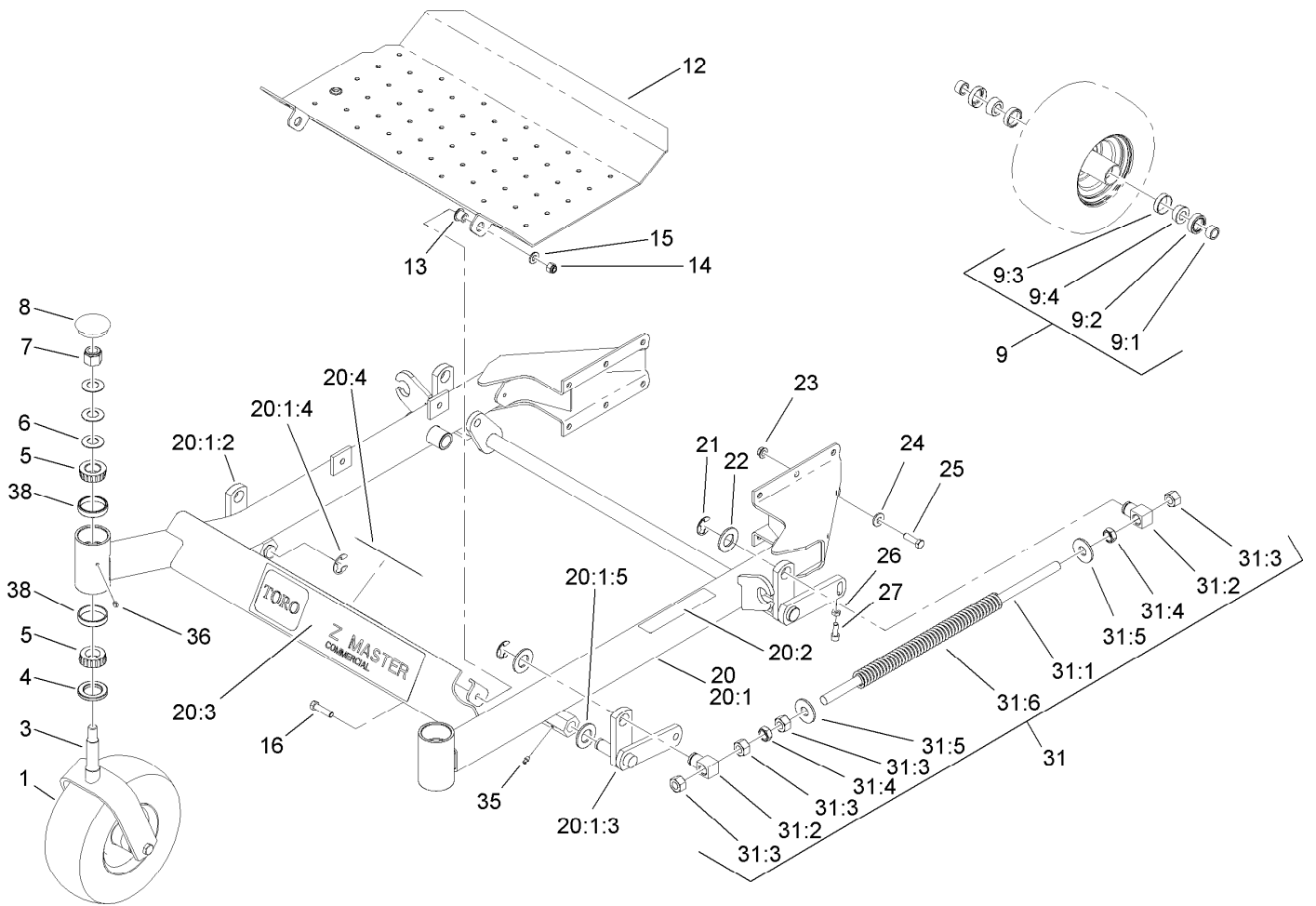
**STD:** standard

**TAP:** self tapping

**TTH:** torx truss head

# Contents

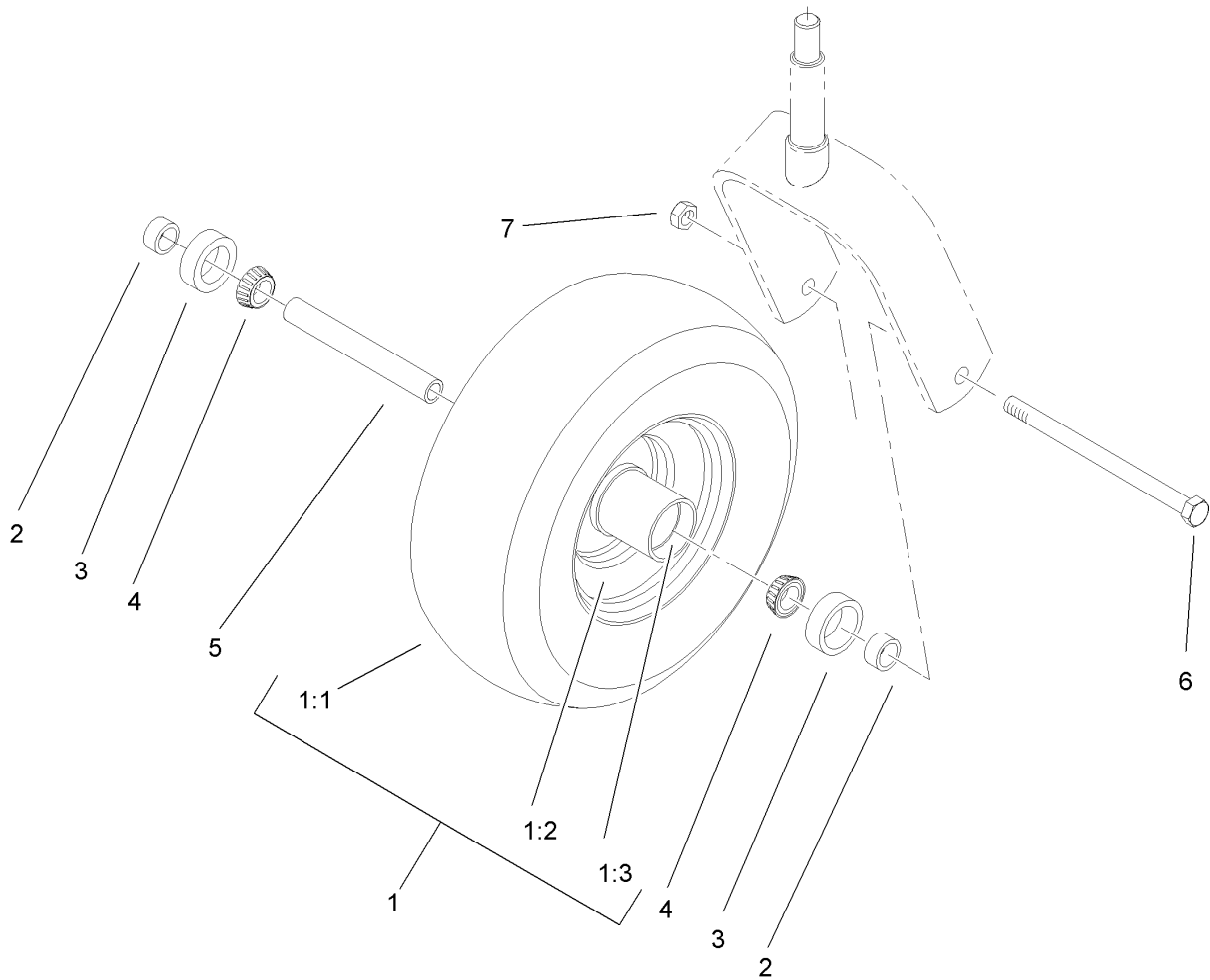
Front Frame Assembly .....	4
Caster Wheel Assembly No. 1-634662.....	5
Height-of-Cut Assembly .....	6
Main Frame Assembly.....	7
Fuel System Assembly .....	8
Parking Brake Assembly.....	9
Motion Control Assembly .....	10
RH Motion Control Assembly No. 109-3911 .....	11
LH Motion Control Assembly No. 109-3912.....	12
Hydraulic System Assembly .....	13
Hydraulic Pump Assembly No. 103-1942.....	14
Pump Idler and Belt Assembly .....	15
Engine, Clutch and Muffler Assembly .....	16
Deck Connection Assembly .....	17
Deck Assembly .....	18
Idler Assembly .....	19
Spindle Assembly No. 107-8504 .....	20
Deck Decal Assembly No. 114-1523.....	21
Rubber Deflector Assembly No. 108-7770.....	22
Electrical System Assembly .....	23
Seat and Bracket Assembly .....	24
Seat and Bracket Assembly No. 110-0446.....	25
Roll-Over Protection System Assembly .....	26
Roll-Over Protection System Assembly No. 107-8093.....	27
Cylinder and Crankcase Assembly Kawasaki FH641V-DS19-R.....	28
Piston and Crankshaft Assembly Kawasaki FH641V-DS19-R .....	29
Valve and Camshaft Assembly Kawasaki FH641V-DS19-R .....	30
Lubrication Equipment Assembly Kawasaki FH641V-DS19-R .....	31
Cooling Equipment Assembly Kawasaki FH641V-DS19-R .....	32
Electric Equipment Assembly Kawasaki FH641V-DS19-R .....	33
Control Equipment Assembly Kawasaki FH641V-DS19-R .....	34
Carburetor Assembly Kawasaki FH641V-DS19-R .....	35
Air Filter and Muffler Assembly Kawasaki FH641V-DS19-R .....	36
Fuel Tank and Valve Assembly Kawasaki FH641V-DS19-R .....	37
Starter Assembly Kawasaki FH641V-DS19-R.....	38
Label Assembly Kawasaki FH641V-DS19-R.....	39
Attachments and Accessories .....	40



## Front Frame Assembly

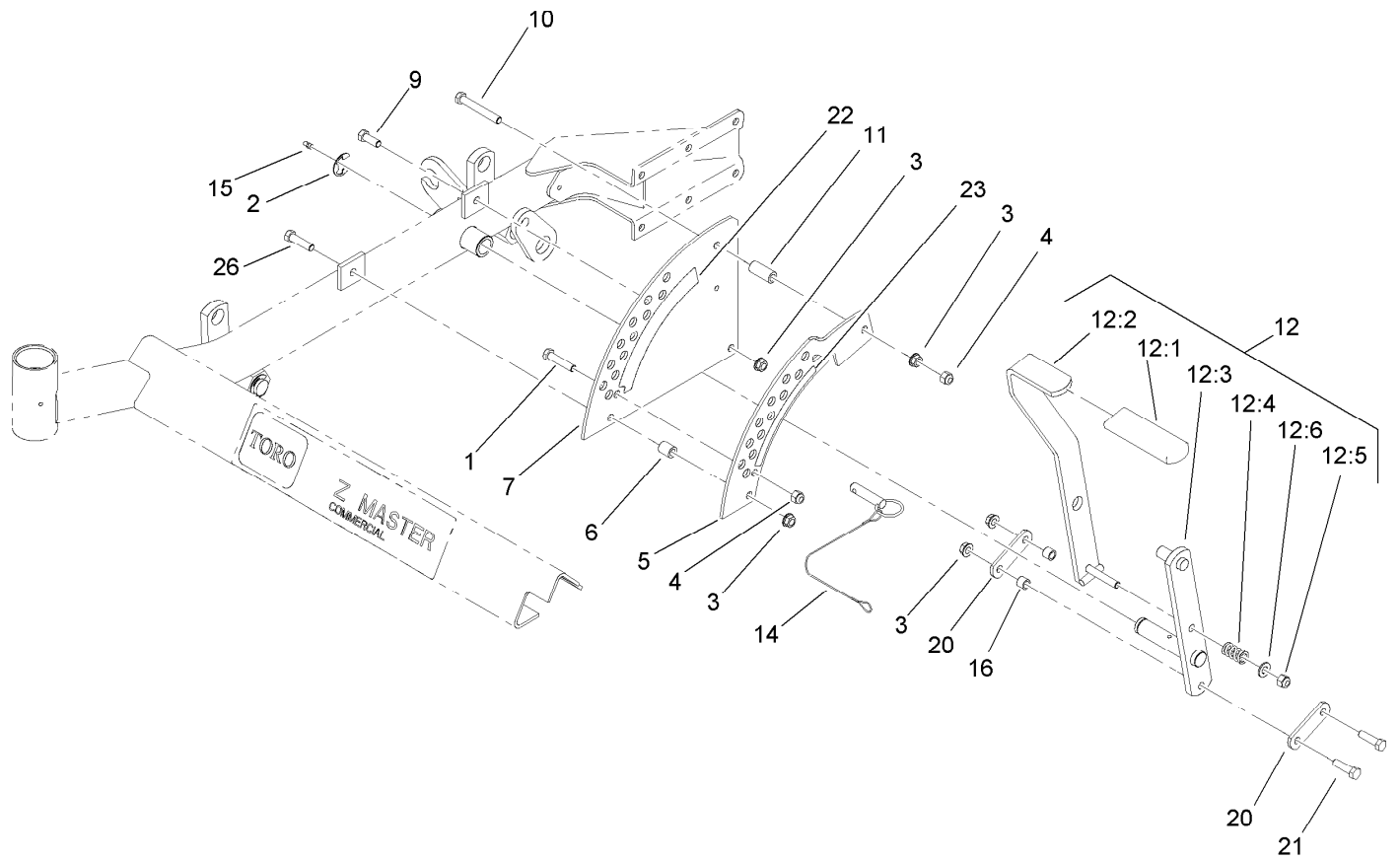
Ref.	Part Number	Qty.	Description	Ref.	Part Number	Qty.	Description
1	1-634662	2	Caster Wheel ASM	20:1:5	3256-29	2	Washer-Flat
3	1-632511-01	2	Caster	20:2	1-633818	1	Decal-Warning
4	1-543511	2	Seal-Grease	20:3	106-7451	1	Decal
5	254-94	4	Bearing-Cone, Tapered	20:4	107-2112	1	Decal-Warning
6	1-633508	6	Washer-Bellville	21	32151-103	4	Ring-Retaining, EXT
7	3296-51	2	Nut-Lock, NI	22	3256-29	4	Washer-Flat
8	103-4882	2	Cap-Grease	23	3290-357	12	Nut-HHF, Whiz
9	110-8837	1	Caster Wheel Bearing Kit	24	98-5975	12	Washer-Belleville
9:1	1-633581	2	Spacer-Bearing	25	323-7	12	Screw-HH
9:2	1-633580	2	Seal-Bearing	26	3218-2	2	Nut-Jam
9:3	1-633584	2	Bearing-Cup	27	3274-18	2	Screw-HSH
9:4	1-633585	2	Bearing-Cone, Taper	31	1-634439	2	Front Frame Spring ASM
12	108-5007-03	1	Floor Pan	31:1	1-633096	1	Rod-Lift, Deck
13	86-2180	2	Bushing-Flange	31:2	1-633441	2	Swivel-Deck Mount, Rear
14	3296-39	2	Nut-Lock, NI	31:3	3217-11	4	Nut-Hex
15	3256-24	2	Washer-Flat	31:4	3218-6	2	Nut-Jam
16	323-8	2	Screw-HH	31:5	3256-7	2	Washer-Flat
20	108-5022	1	Front Frame ASM	31:6	1-633064	1	Spring-Support, Deck
20:1		1	Frame-Front ●	35	302-19	4	Fitting-Grease
20:1:2	99-3872	1	RH Lift Arm ASM	36	1-811010	2	Plug
20:1:3	99-3871	1	LH Lift Arm ASM	38	254-72	4	Bearing-Cup, Tapered
20:1:4	32151-103	2	Ring-Retaining, EXT				

● Not serviced separately



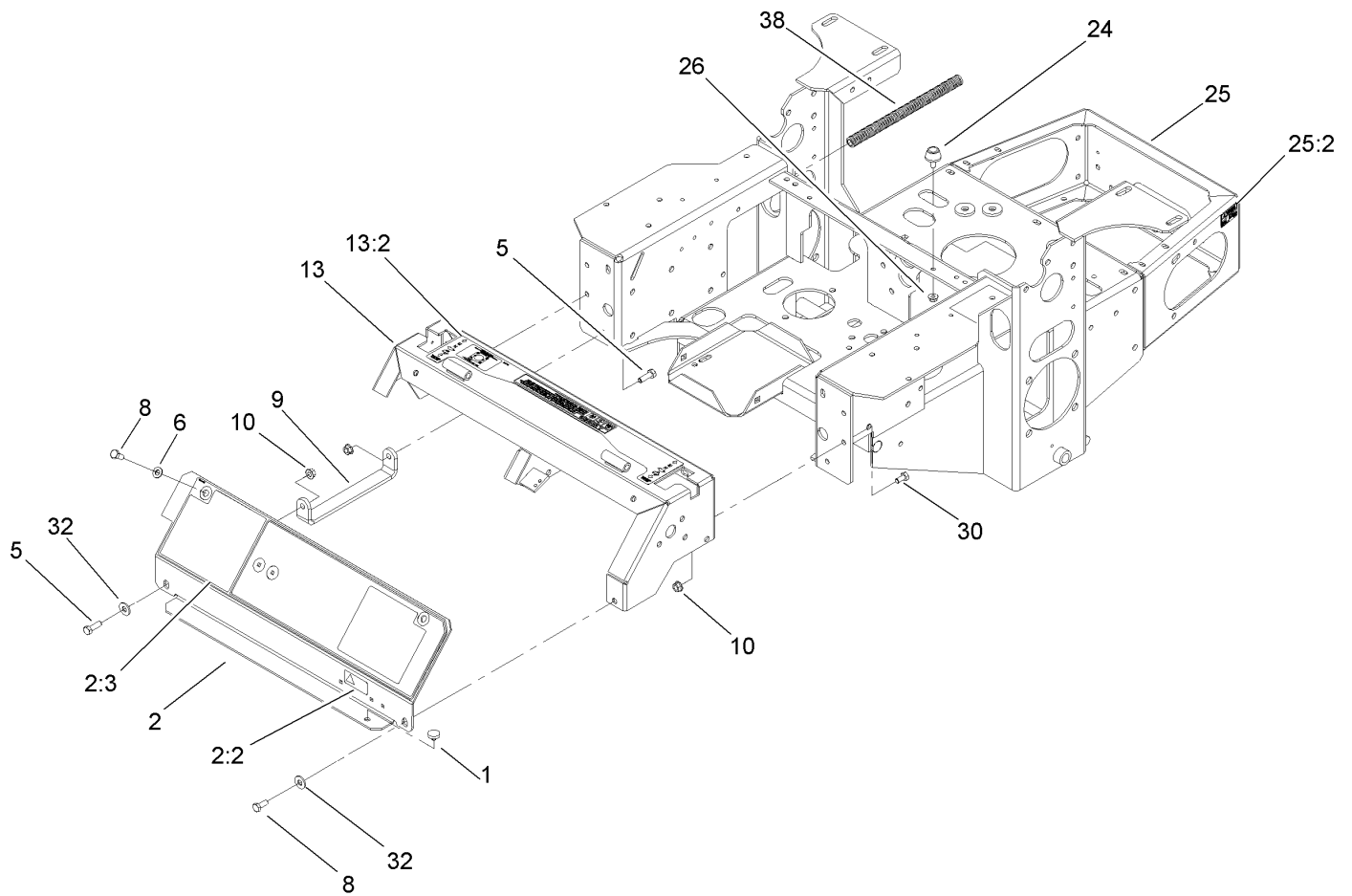
## Caster Wheel Assembly No. 1-634662

<i>Ref.</i>	<i>Part Number</i>	<i>Qty.</i>	<i>Description</i>
1	1-633582	1	Wheel And Tire ASM
1:1	1-633002	1	Tire
1:2	1-633583	1	Wheel
1:3	1-633584	2	Bearing-Cup
2	1-633581	2	Spacer-Bearing
3	1-633580	2	Seal-Bearing
4	1-633585	2	Bearing-Cone, Taper
5	1-633579	1	Spacer-Caster, Front
6	325-36	1	Screw-HH
7	3296-45	1	Nut-Lock, NI



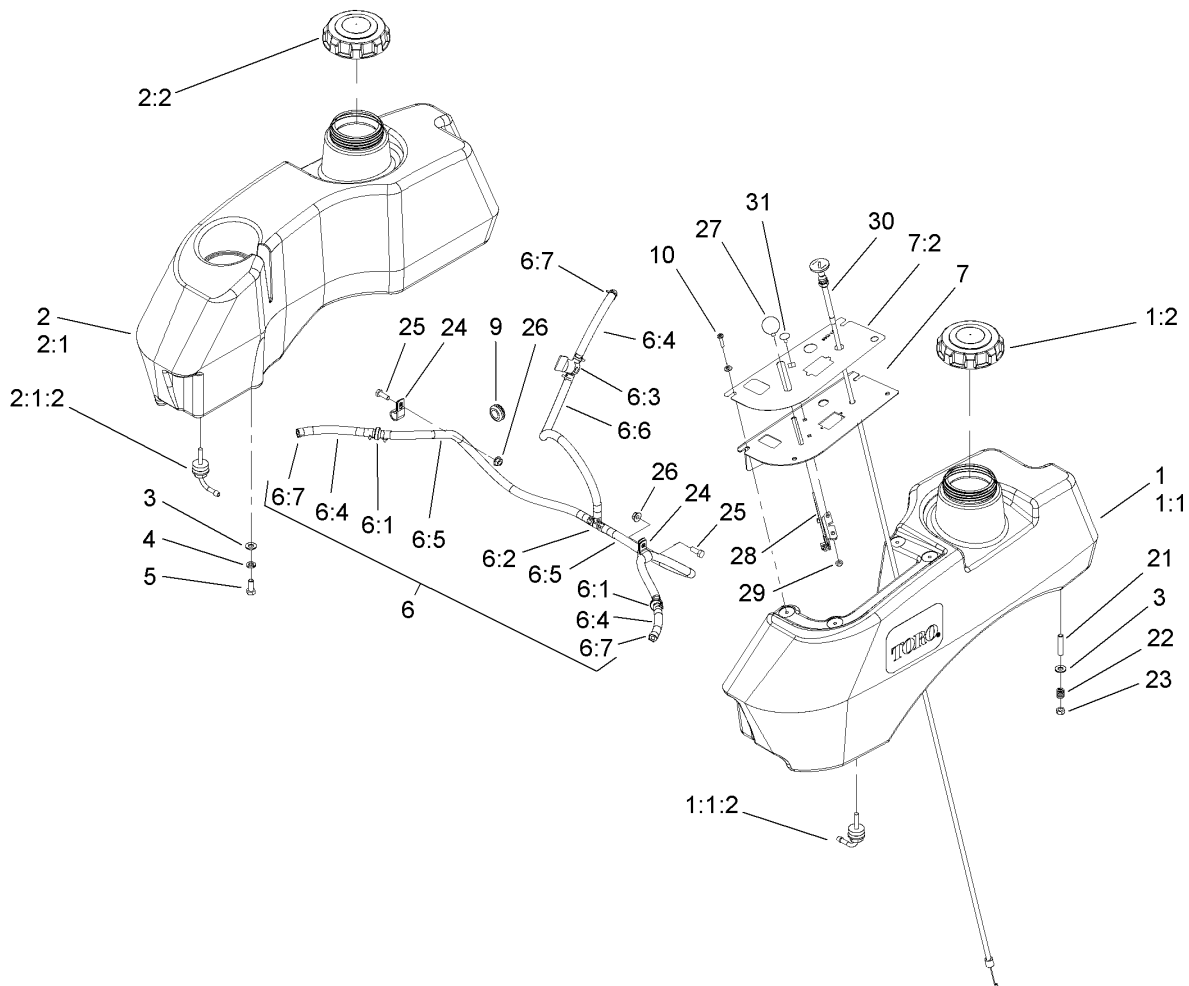
## Height-of-Cut Assembly

<b>Ref.</b>	<b>Part Number</b>	<b>Qty.</b>	<b>Description</b>	<b>Ref.</b>	<b>Part Number</b>	<b>Qty.</b>	<b>Description</b>
1	323-9	1	Screw-HH	12:3	106-6598	1	Lift Arm ASM
2	32151-103	1	Ring-Retaining, EXT	12:4	1-633325	1	Spring-Compression
3	3290-357	5	Nut-HHF, Whiz	12:5	3296-39	1	Nut-Lock, NI
4	3296-39	2	Nut-Lock, NI	12:6	3256-24	1	Washer-Flat
5	108-7755-01	1	Plate-Lift, Deck	14	106-9951	1	Hitch Pin ASM
6	1-633080	1	Bushing-Lever, Lift	15	302-19	1	Fitting-Grease
7	1-653230-01	1	Plate-Lift, Deck	16	103-1918	2	Bushing
9	323-6	1	Screw-HH	20	1-633068	2	Arm-Lift, Deck
10	323-13	1	Screw-HH	21	323-29	2	Screw-HH
11	1-633082	1	Bushing-Lever, Lift	22	108-1051	1	Decal-Deck Height, Outer
12	110-5870	1	Deck Lift Handle ASM	23	108-1050	1	Decal-Deck Height, Inner
12:1	1-633295	1	Grip-Lever, Lift	26	323-8	1	Screw-HH
12:2	103-2078	1	Handle-Lift				



## Main Frame Assembly

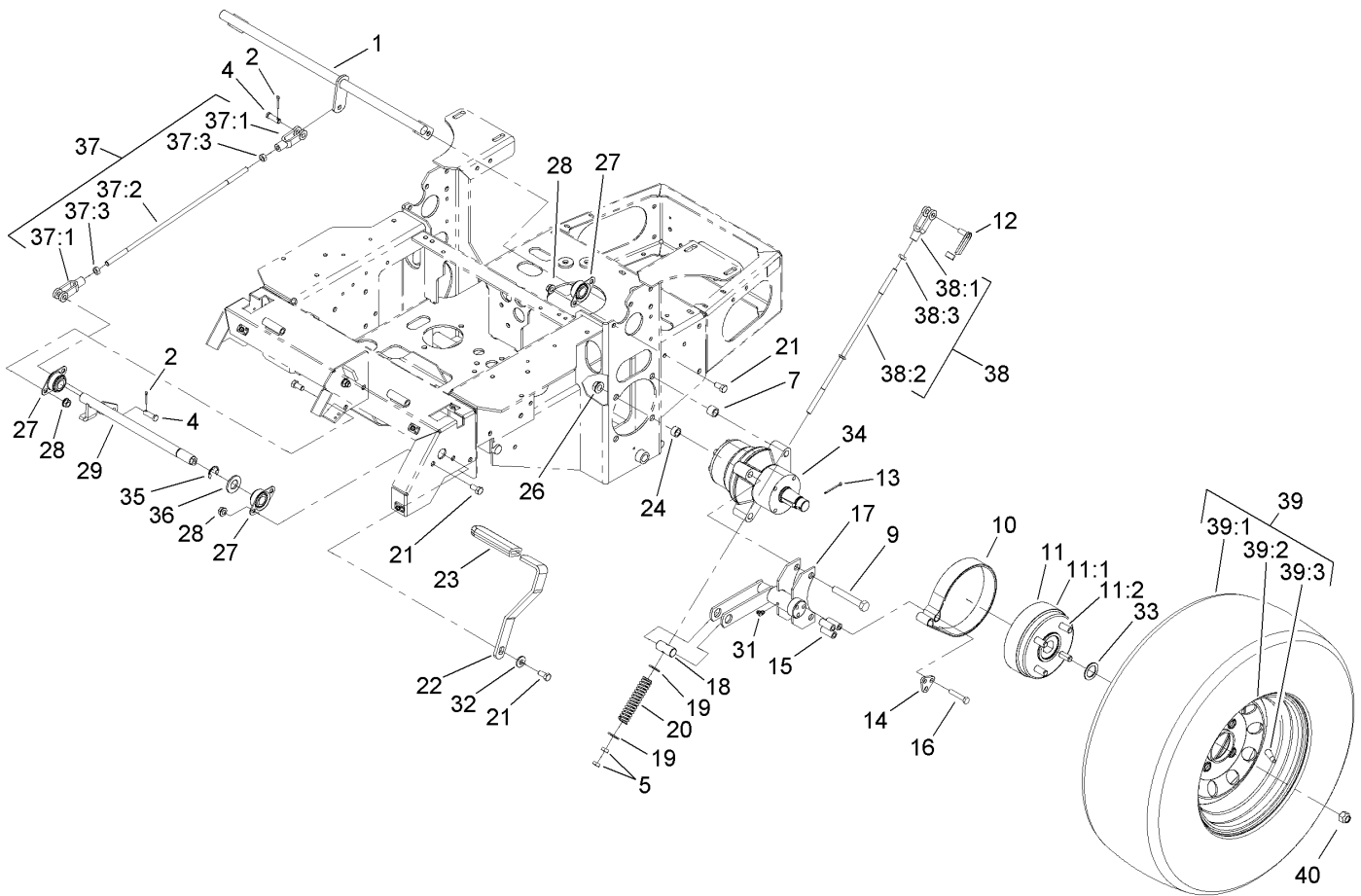
<i>Ref.</i>	<i>Part Number</i>	<i>Qty.</i>	<i>Description</i>
1	1-513658	2	Bumper
2	108-1864	1	Panel ASM
2:2	98-4387	1	Decal-Protection, Ear
2:3	107-8445	1	Decal-Cover, Panel
5	322-5	2	Screw-HH
6	3256-23	2	Washer-Flat
8	322-3	3	Screw-HH
9	103-7935-03	1	Bracket-Panel, Instrument
10	32128-20	6	Nut-HF
13	108-5997	1	Console ASM
13:2	108-5995	1	Decal-Warning
24	109-2365	2	Rubber Bumper ASM (W/Stud)
25	112-9007	1	Main Frame ASM
25:2	65-2690	2	Decal-Surface, Hot
26	32128-33	2	Nut-HF
30	322-2	4	Screw-HH
32	3256-3	2	Washer-Flat
38	24-7922	2	Conduit-Convolved, Split



## Fuel System Assembly

Ref.	Part Number	Qty.	Description	Ref.	Part Number	Qty.	Description
1	110-4165	1	LH Fuel Tank Service Kit	6:6	109-0297	1	Hose-Fuel
1:1		1	LH Fuel Tank ASM ●	6:7	1-303077	12	Clamp
1:1:2	103-2605	1	Fitting-Fuel, Bulkhead	7	107-2149	1	Control Panel ASM
1:2	109-0346	1	Cap-Fuel, Gas	7:2	110-0439	1	Decal-Panel, Control
2	105-3639	1	RH Fuel Tank Service Kit	9	1-543296	2	Grommet
2:1		1	RH Fuel Tank ASM ●	10	109-2661	4	Screw-PPH
2:1:2	103-2605	1	Fitting-Fuel, Bulkhead	21	1-633023	4	Stud
2:2	109-0346	1	Cap-Fuel, Gas	22	1-633349	4	Spring-Tank, Fuel
3	3256-23	8	Washer-Flat	23	3296-47	4	Nut-Lock, NI
4	1-805005	4	Washer-Lock	24	1-513762	2	Clip-Loom
5	322-3	4	Screw-HH	25	321-4	2	Screw-HH
6		1	Fuel Line ASM ●	26	32128-33	2	Nut-HF
6:1	99-5000	2	Valve-Check, Fuel	27	1-513592	1	Knob-Ball
6:2	99-5005	1	Fitting-Tee, Barbed	28	1-633696	1	Throttle Cable ASM
6:3	1-603770	1	Valve-Fuel	29	3296-2	2	Nut-Lock, NI
6:4	109-0678	3	Hose-Fuel	30	106-9962	1	Control-Choke, Push / Pull
6:5	110-5701	2	Hose-Fuel	31	1-807513	2	Bolt-CARR

● Not serviced separately

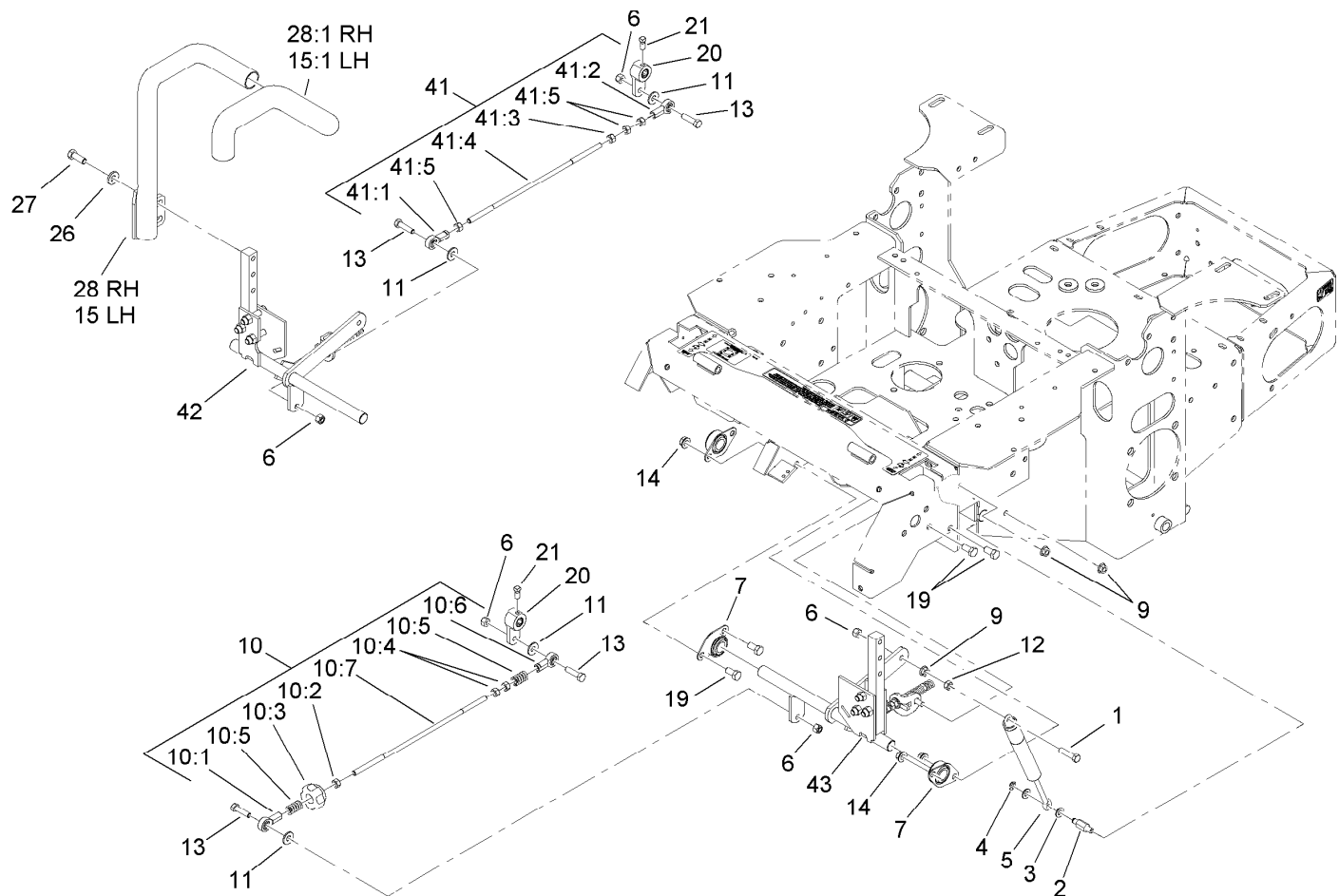


## Parking Brake Assembly

Ref.	Part Number	Qty.	Description	Ref.	Part Number	Qty.	Description
1	1-652073-03	1	Crank-Brake, Park	27	1-633102	4	Bearing-Flange, Side
2	3272-10	2	Pin-Cotter	28	3290-357	8	Nut-HHF, Whiz
4	1-808285	2	Pin-Clevis	29	103-3116	1	Shaft-Brake, Parking
5	3219-3	4	Nut-Hex	31	1481	2	Fitting-Grease
7	1-653068	4	Spacer-Wheel	32	98-5975	1	Washer-Belleville
9	325-13	8	Screw-HH	33	1-523157	2	Washer-Spacer
10	103-0355	2	Band-Brake	34	103-5333	2	Motor-Wheel
11		2	Hub And Wheel ASM ■	34:1	109-5965	1	Wheel Motor Seal Kit ●
11:1	103-0589	1	Wheel Hub ASM	34:2	109-5966	1	Wheel Motor Seal Kit ●
11:2	1-633926	4	Stud-Wheel	35	32151-48	1	E-Ring ●
12	103-2399	2	Pin-Spring, Clevis	36	3256-28	1	Washer-Flat
13	1-806800	2	Pin-Cotter	37	103-4328	1	Brake Rod ASM
14	103-0374	2	Retainer-Band, Brake	37:1	1-633131	2	Yoke-Linkage, Brake
15	103-0384	6	Spacer	37:2	1-653061	1	Linkage-Handle, Brake
16	322-9	6	Screw-HH	37:3	3219-3	2	Nut-Hex
17	103-0352-03	2	Bracket-Brake	38	103-4329	2	Brake Rod ASM
18	1-633144	2	Pin-Trunion	38:1	1-633131	1	Yoke-Linkage, Brake
19	3256-4	4	Washer-Flat	38:2	103-0356	1	Rod-Brake
20	1-633454	2	Spring-Brake	38:3	3219-3	1	Nut-Hex
21	323-4	9	Screw-HH	39	1-653159	2	Wheel And Tire ASM
22	1-653074-03	1	Handle-Brake, Park	39:1	1-653160	1	Tire
23	1-633268	1	Grip-Lever	39:2	1-653161	1	Wheel
24	1-653069	4	Spacer-Wheel	39:3	232-27	1	Stem-Valve
26	32128-49	8	Nut-HHF	40	242-50	8	Nut-Lug

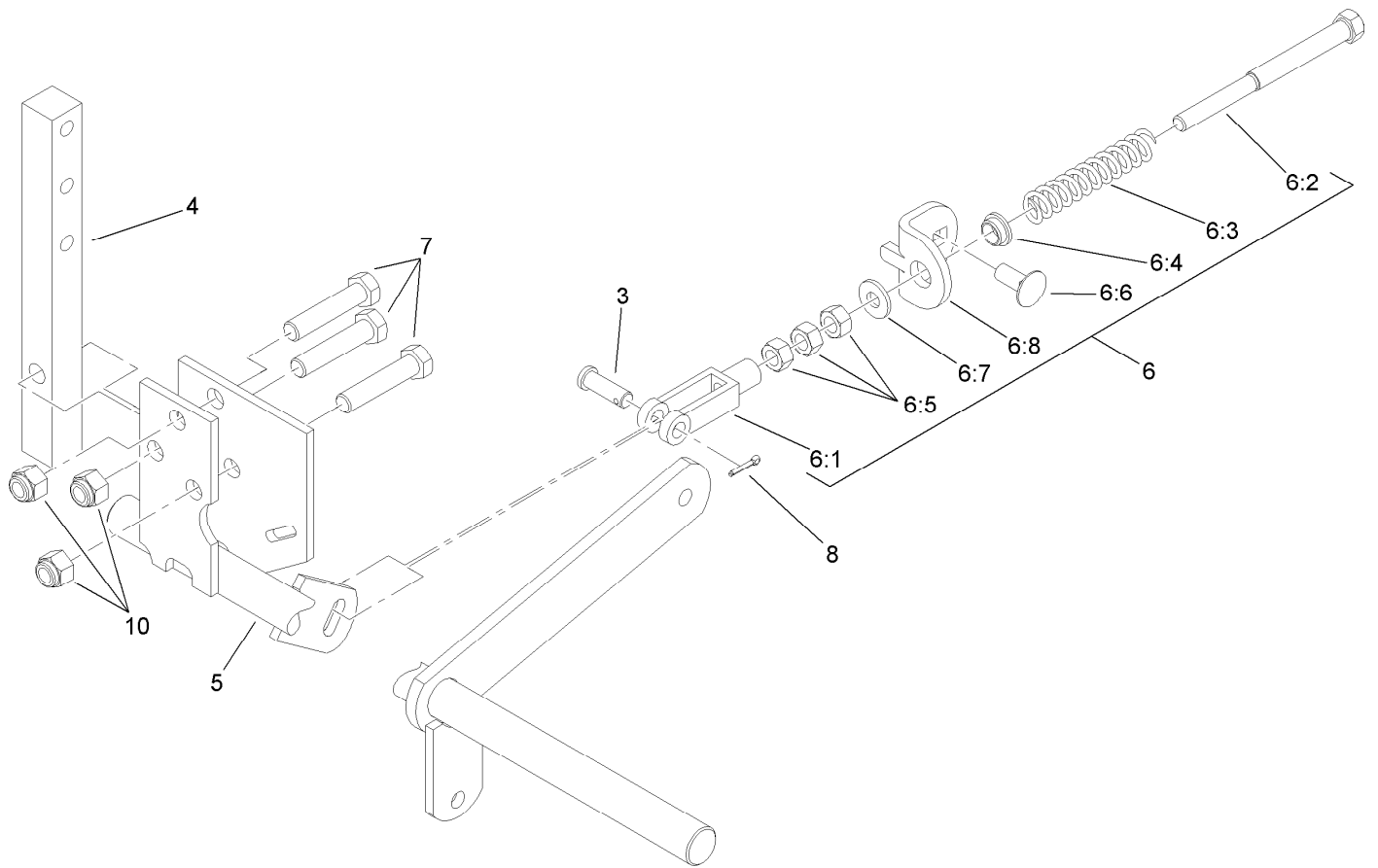
● Not illustrated

■ Not serviced separately



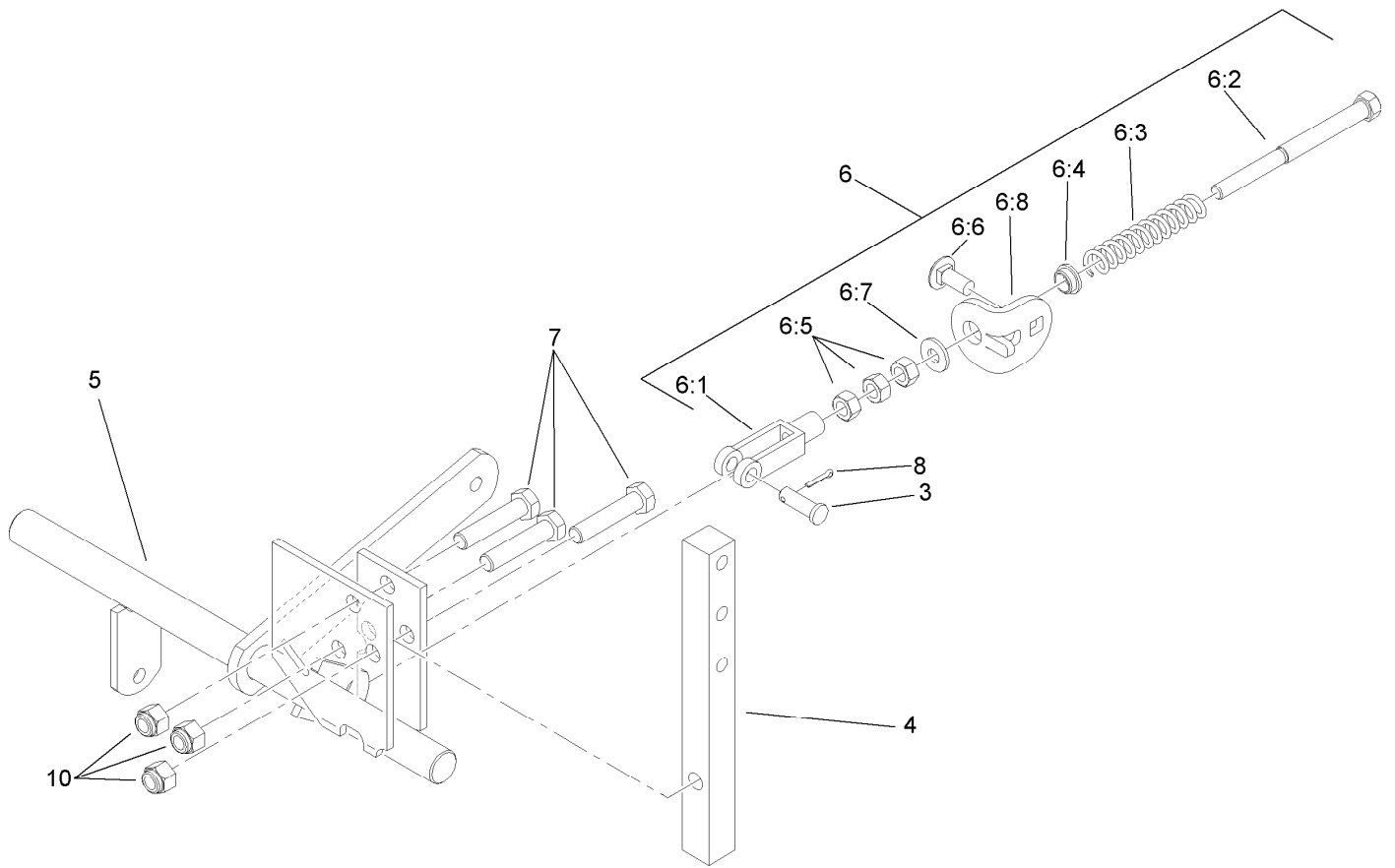
## Motion Control Assembly

Ref.	Part Number	Qty.	Description	Ref.	Part Number	Qty.	Description
1	1-403180	2	Screw-HH	14	3290-357	6	Nut-HHF, Whiz
2	103-4101	2	Pin-Damper	15	108-7238	1	LH Lever ASM
3	3256-23	4	Washer-Flat	15:1	106-9987	1	Grip-Control, Motion
4	32120-35	2	Ring-Retaining, EXT	19	323-4	6	Screw-HH
5	109-2339	2	Damper-Control, Motion	20	103-3717	2	Arm-Control
6	3296-29	6	Nut-Lock, NI	21	1-803022	2	Screw-Set
7	1-633102	4	Bearing-Flange, Side	26	98-5975	4	Washer-Belleville
9	32128-20	10	Nut-HF	27	323-6	4	Screw-HH
10	103-4326	1	Tracking Rod ASM	28	108-7237	1	RH Lever ASM
10:1	1-543017	1	Balljoint-RH	28:1	106-9987	1	Grip-Control, Motion
10:2	3219-2	1	Nut-Hex	41	103-4327	1	Tracking ASM
10:3	103-3060	1	Knob-Tracking	41:1	1-543017	1	Balljoint-RH
10:4	1-804524	2	Nut	41:2	1-633152	1	Balljoint-LH
10:5	1-323245	2	Spring-Compression	41:3	1-804524	1	Nut
10:6	1-633152	1	Balljoint-LH	41:4	103-3066	1	Link-Rod, Tracking
10:7	103-3066	1	Link-Rod, Tracking	41:5	3219-2	3	Nut-Hex
11	3256-3	4	Washer-Flat	42	109-3911	1	RH Motion Control ASM
12	3217-6	2	Nut-Hex	43	109-3912	1	LH Motion Control ASM
13	322-6	4	Screw-HH				



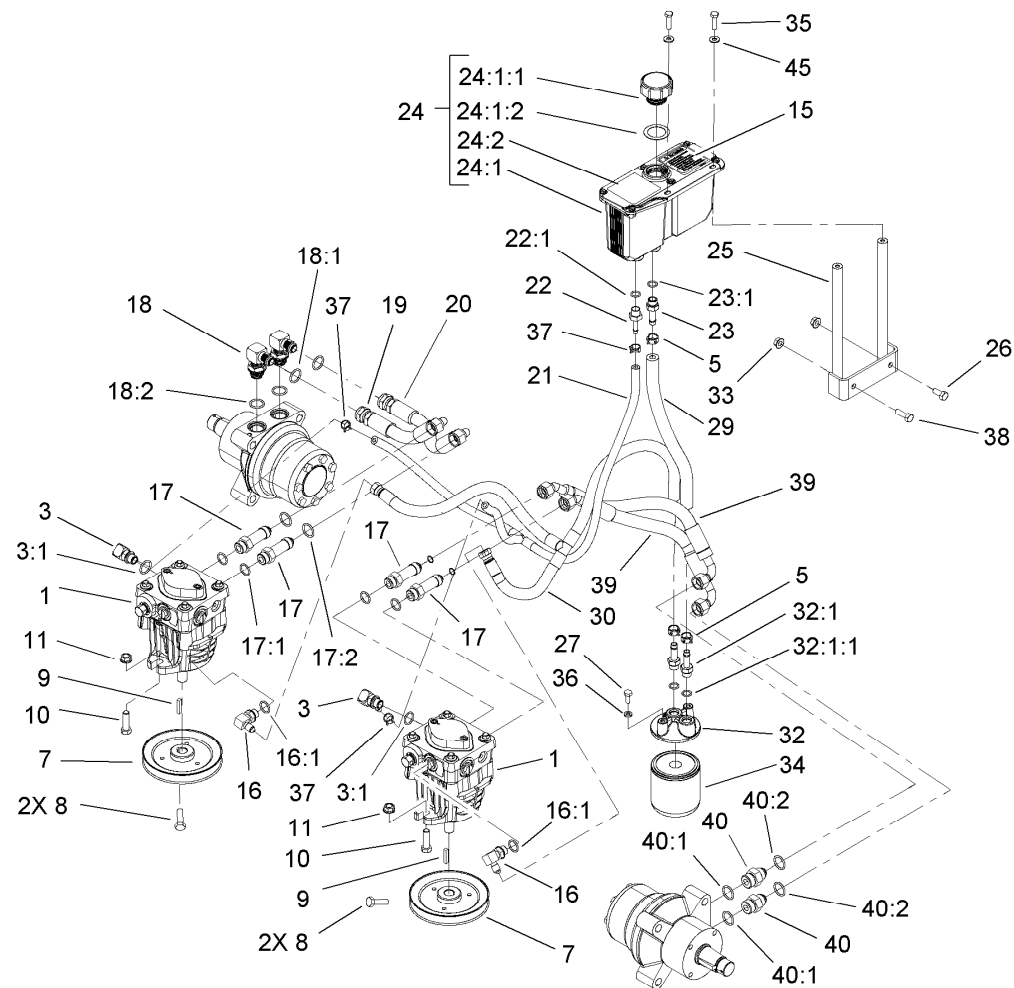
## RH Motion Control Assembly No. 109-3911

<i>Ref.</i>	<i>Part Number</i>	<i>Qty.</i>	<i>Description</i>
3	1-808280	1	Pin-Clevis
4	103-0407	1	Arm-Shaft, Control
5	103-4773	1	Control-Motion, RH
6	109-3903	1	Neutral Return ASM
6:1	1-303105	1	Yoke-Adjustable
6:2	1-603737	1	Bolt-Return, Neutral
6:3	1-603807	1	Spring-Return, Neutral
6:4	109-3769	1	Bushing-Nylon, Flanged
6:5	3219-2	3	Nut-Hex
6:6	3230-23	1	Screw-CARR
6:7	3256-2	1	Washer-Flat
6:8	109-3908	1	Tab-Adjustment
7	323-9	3	Screw-HH
8	3272-5	1	Pin-Cotter
10	3296-39	3	Nut-Lock, NI



## LH Motion Control Assembly No. 109-3912

<i>Ref.</i>	<i>Part Number</i>	<i>Qty.</i>	<i>Description</i>
3	1-808280	1	Pin-Clevis
4	103-0407	1	Arm-Shaft, Control
5	103-4774	1	Control-Motion, LH
6	109-3903	1	Neutral Return ASM
6:1	1-303105	1	Yoke-Adjustable
6:2	1-603737	1	Bolt-Return, Neutral
6:3	1-603807	1	Spring-Return, Neutral
6:4	109-3769	1	Bushing-Nylon, Flanged
6:5	3219-2	3	Nut-Hex
6:6	3230-23	1	Screw-CARR
6:7	3256-2	1	Washer-Flat
6:8	109-3908	1	Tab-Adjustment
7	323-9	3	Screw-HH
8	3272-5	1	Pin-Cotter
10	3296-39	3	Nut-Lock, NI

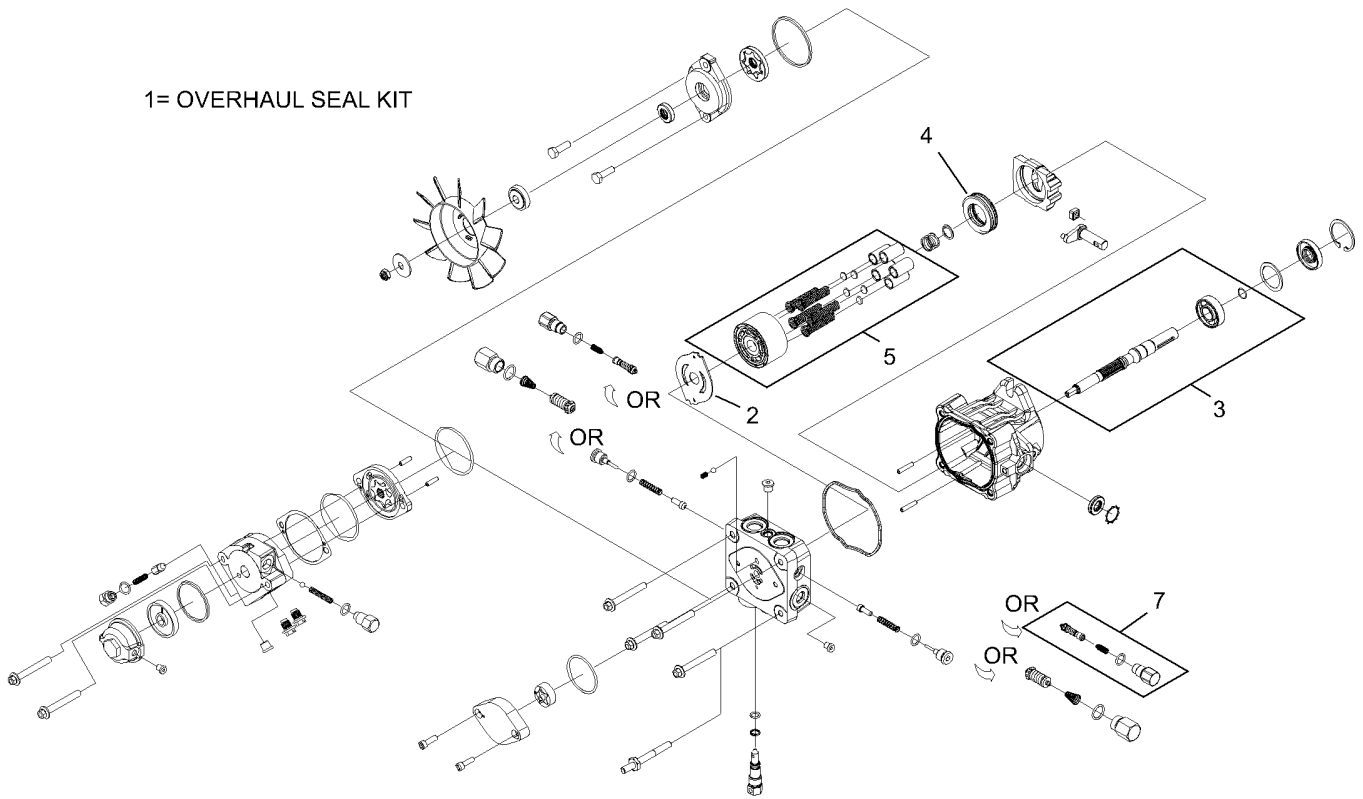


## Hydraulic System Assembly

Ref.	Part Number	Qty.	Description	Ref.	Part Number	Qty.	Description
1	103-1942	2	Pump-HYD	24	103-1947	1	HYD Reservoir ASM
3	103-1799	2	Elbow-90 DEG	24:1		1	Reservoir-HYD ●
3:1	237-42	1	O-Ring	24:1:1	103-1948	1	Cap-Reservoir, HYD
5	103-1988	3	Clamp-Hose	24:1:2	103-1949	1	Gasket-Cap
7	1-653156	2	Pulley	24:2	1-523552	1	Decal-Tank, HYD
8	1-803050	4	Screw-Set	25	103-3071-03	1	Stand-Reservoir
9	1-807272	2	Key	26	322-3	1	Screw-HH
10	323-7	4	Screw-HH	27	321-3	2	Screw-HH
11	3290-357	4	Nut-HHF, Whiz	29	103-3077	1	HYD Hose ASM
15	103-2644	1	Decal-Exhaust	30	103-2930	1	HYD Hose ASM
16	103-1802	2	Fitting-HYD, 90 DEG	32	103-2889	1	Filter Head ASM
16:1	1-603921	1	O-Ring	32:1	103-1912	2	Adapter-Straight
17	103-1940	4	Adapter-HYD, Straight	32:1:1	237-42	1	O-Ring
17:1	237-79	1	O-Ring	33	32128-20	2	Nut-HF
17:2	1-603992	1	O-Ring	34	1-633750	1	Filter-Oil, HYD
18	1-633605	2	Fitting-HYD, 90 DEG	34	1-633752	1	Filter-HYD, Winter
18:1	1-603992	1	O-Ring	35	321-6	2	Screw-HH
18:2	237-80	1	O-Ring	36	1-805004	2	Washer-Lock
19	1-653186	1	Hose-Front	37	103-1716	3	Clamp-Hose
20	1-653187	1	Hose-Rear, RH	38	322-5	1	Screw-HH
21	103-2357	1	HYD Hose ASM	39	103-3809	2	Hose-LH
22	103-1801	1	Adapter-Straight	40	1-603991	2	Fitting-Straight
22:1	237-42	1	O-Ring	40:1	237-80	1	O-Ring
23	103-1912	1	Adapter-Straight	40:2	1-603992	1	O-Ring
23:1	237-42	1	O-Ring	45	3256-22	2	Washer-Flat

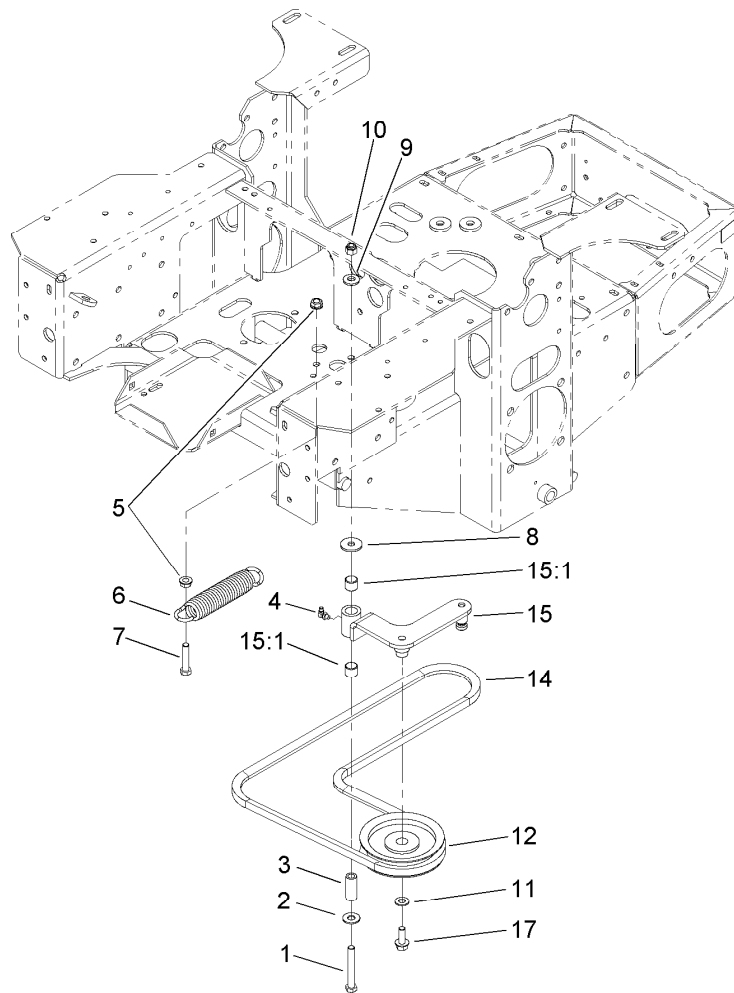
● Not serviced separately

1= OVERHAUL SEAL KIT



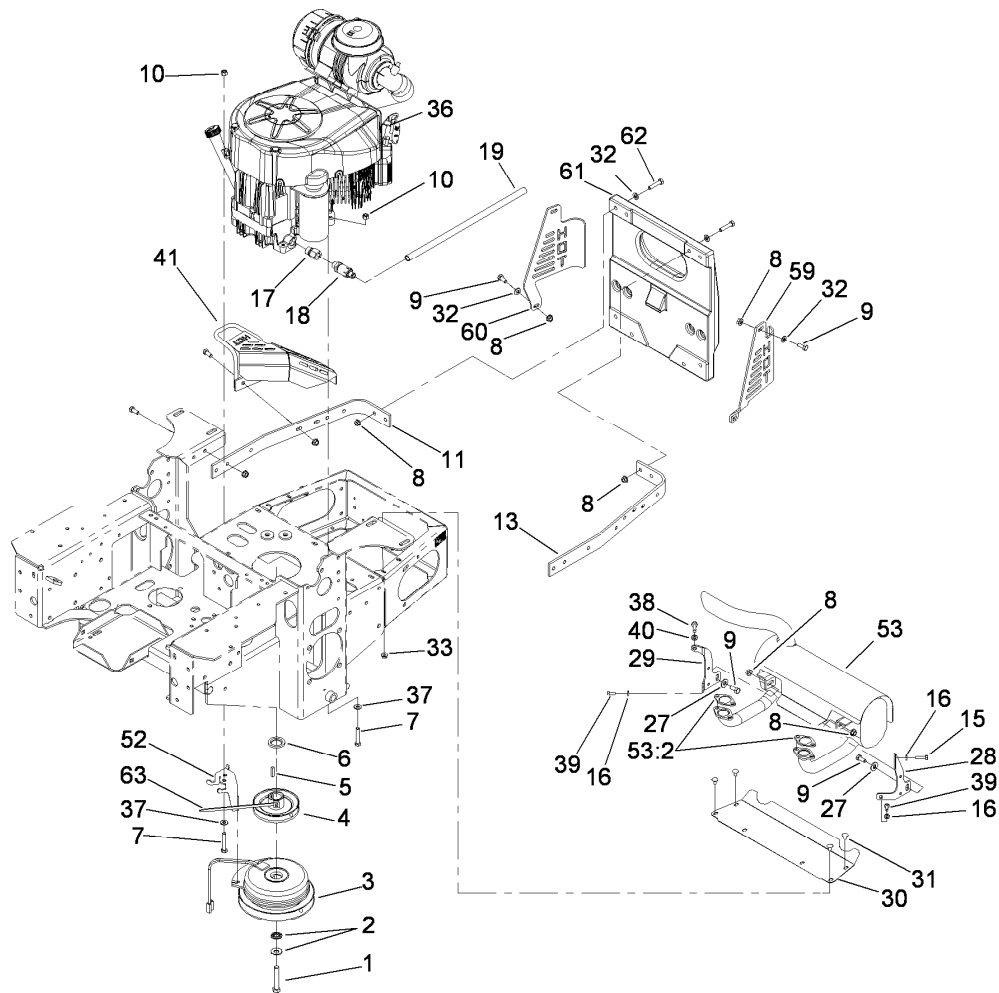
## Hydraulic Pump Assembly No. 103-1942

<i>Ref.</i>	<i>Part Number</i>	<i>Qty.</i>	<i>Description</i>
1	105-6184	1	Seal Overhaul Kit
2	105-6185	1	Plate-Valve
3	103-2664	1	Input Shaft Kit
4	94-6922	1	Bearing-Thrust
5	103-2666	1	Cylinder Block Kit
7	106-2053	1	Shock Valve Kit



## Pump Idler and Belt Assembly

<i>Ref.</i>	<i>Part Number</i>	<i>Qty.</i>	<i>Description</i>
1	323-13	1	Screw-HH
2	3256-4	1	Washer-Flat
3	1-603044	1	Bushing
4	302-40	1	Fitting-Grease
5	3290-357	2	Nut-HHF, Whiz
6	103-4480	1	Spring-Extension
7	323-9	1	Screw-HH
8	63-8410	1	Washer
9	98-5975	1	Washer-Belleville
10	3296-39	1	Nut-Lock, NI
11	3256-24	1	Washer-Flat
12	1-603843	1	Pulley-Idler
14	107-3960	1	Belt
15	103-4482	1	Idler Arm ASM
15:1	103-4681	2	Sleeve-Bearing
17	3234-11	1	Screw-HHF



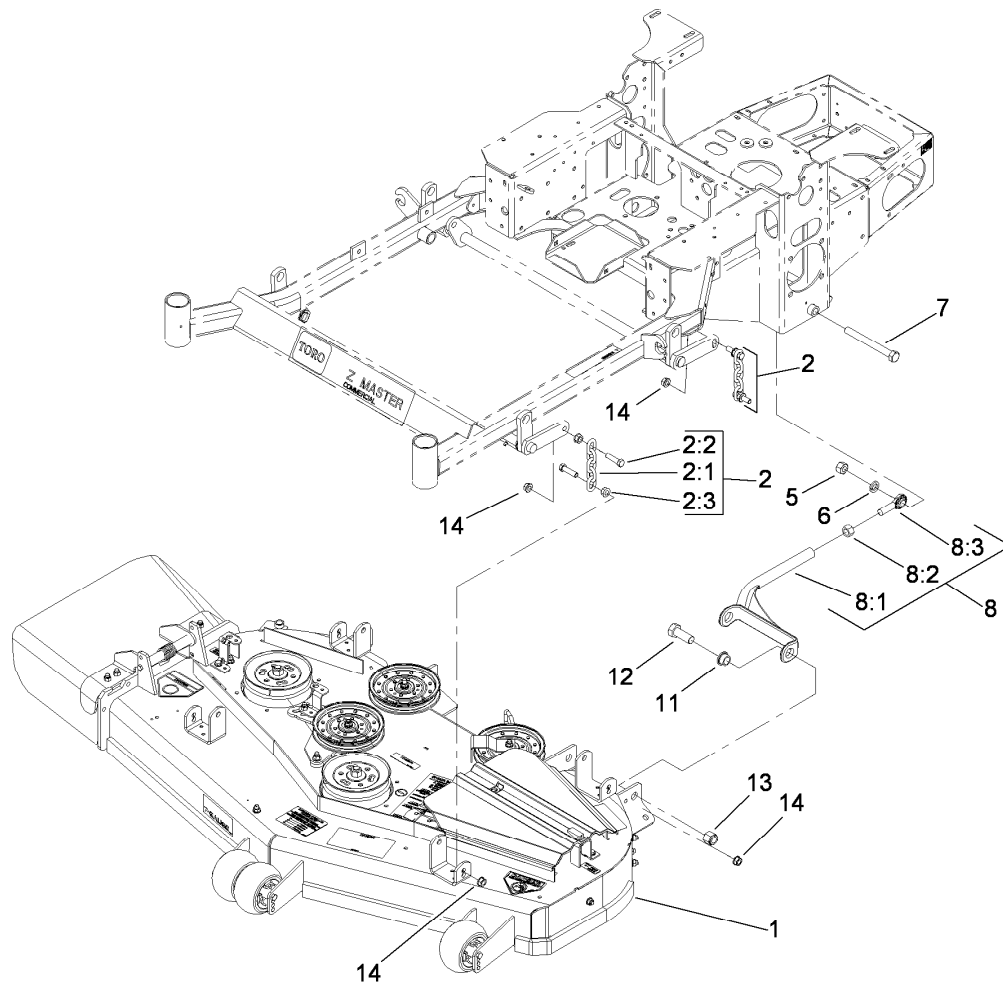
## Engine, Clutch and Muffler Assembly

Ref.	Part Number	Qty.	Description
1	3212-12	1	Screw-HH
2	1-603610	2	Washer-Spring
3	109-2916	1	Clutch
4	103-3913	1	Pulley
5	1-807259	1	Key
6	103-2308	1	Spacer-Crankshaft
7	322-10	4	Screw-HH
8	32128-20	29	Nut-HF
9	322-3	15	Screw-HH
10	3296-29	4	Nut-Lock, NI
11	103-3078-03	1	Strap-Guard, RH
13	103-3164-03	1	Strap-Guard, LH
15	33113-025	1	Screw-HH
16	1-805004	3	Washer-Lock
17	103-1966	1	Adapter
18	92-6877	1	Valve-Drain, Oil
19	106-7022	1	Tube-Drain, Oil
27	3256-3	3	Washer-Flat
28	103-2993-03	1	Bracket-Muffler, LH
29	103-2994-03	1	Bracket-Muffler, RH

Ref.	Part Number	Qty.	Description
30	103-2740-03	1	Deflector-Short
31	3229-10	4	Screw-CARR
32	3256-23	12	Washer-Flat
33	32128-33	4	Nut-HF
36		1	Engine-Kawasaki, FH641V-Ds19 ●■
37	1-303334	4	Washer-Spring
38	33114-025	1	Screw-HH
39	33113-016	2	Screw-HH
40	1-805005	1	Washer-Lock
41	103-3218-03	1	Guard-Tailpipe
52	109-7070-03	1	Anchor-Clutch
53	103-3427	1	Muffler Kit
53:2	1-653313	2	Gasket-Exhaust
59	103-3287-03	1	Guard-Muffler, LH
60	103-3288-03	1	Guard-Muffler, RH
61	107-8421-03	1	Weight-Notched, 60 Lb
62	322-7	8	Screw-HH
63	1-303335	1	Tie-Plastic

● Not serviced separately

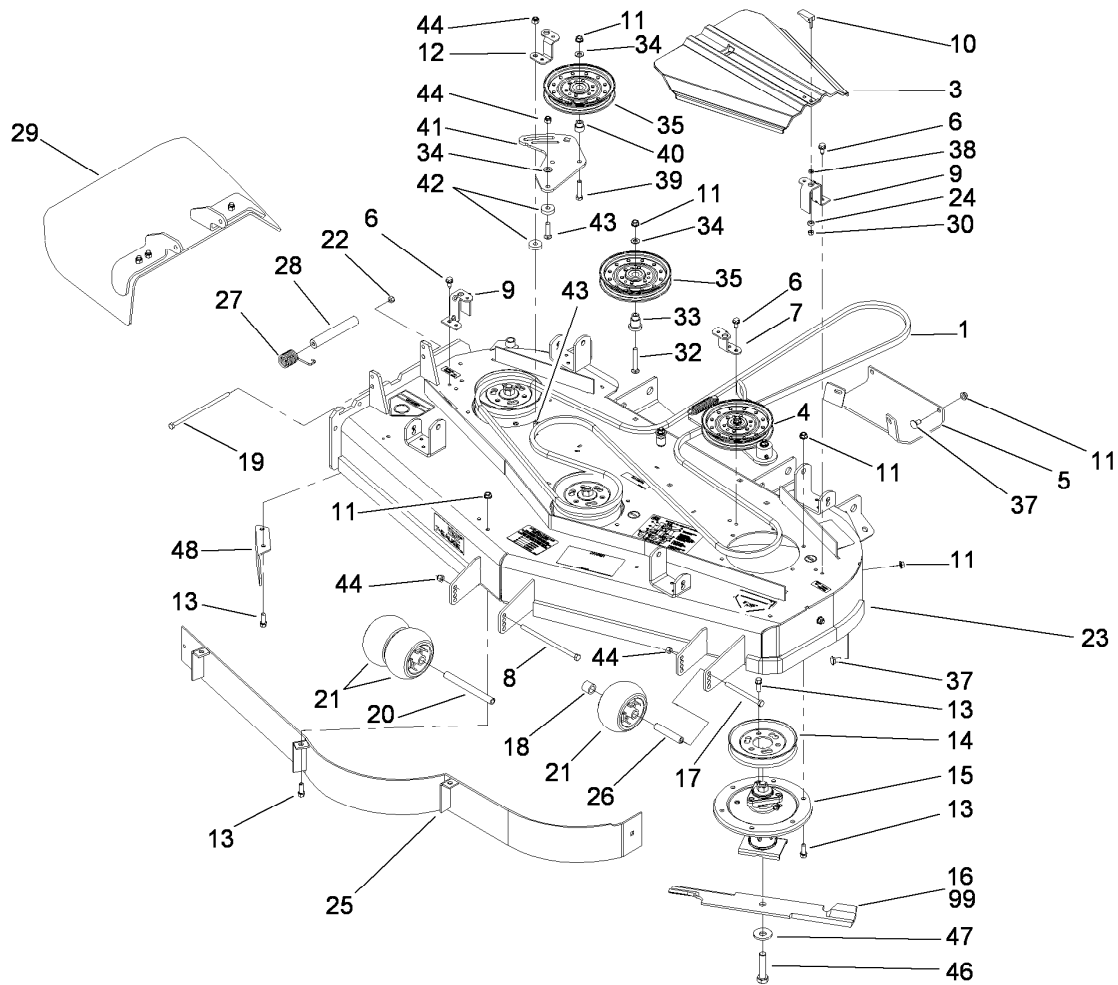
■ Obtain parts from [www.kawpowerpc.com](http://www.kawpowerpc.com)



## Deck Connection Assembly

Ref.	Part Number	Qty.	Description
1		1	Deck ASM ●
2	103-9792	4	Deck Chain ASM
2:1	1-633447	1	Chain-Lift, Deck
2:2	103-1898	2	Screw-HH
2:3	32128-37	2	Nut-HF
5	3217-11	2	Nut-Hex
6	3253-8	2	Washer-Lock
7	1-800344	2	Screw
8	108-7768	2	Strut ASM
8:1	108-7753-03	1	Strut-Deck
8:2	3219-6	1	Nut-Hex
8:3	1-633029	1	Balljoint-Spherical
11	93-2877	4	Bushing
12	328-24	4	Screw-HH
13	3296-51	4	Nut-Lock, NI
14	32128-37	8	Nut-HF

● Not serviced separately

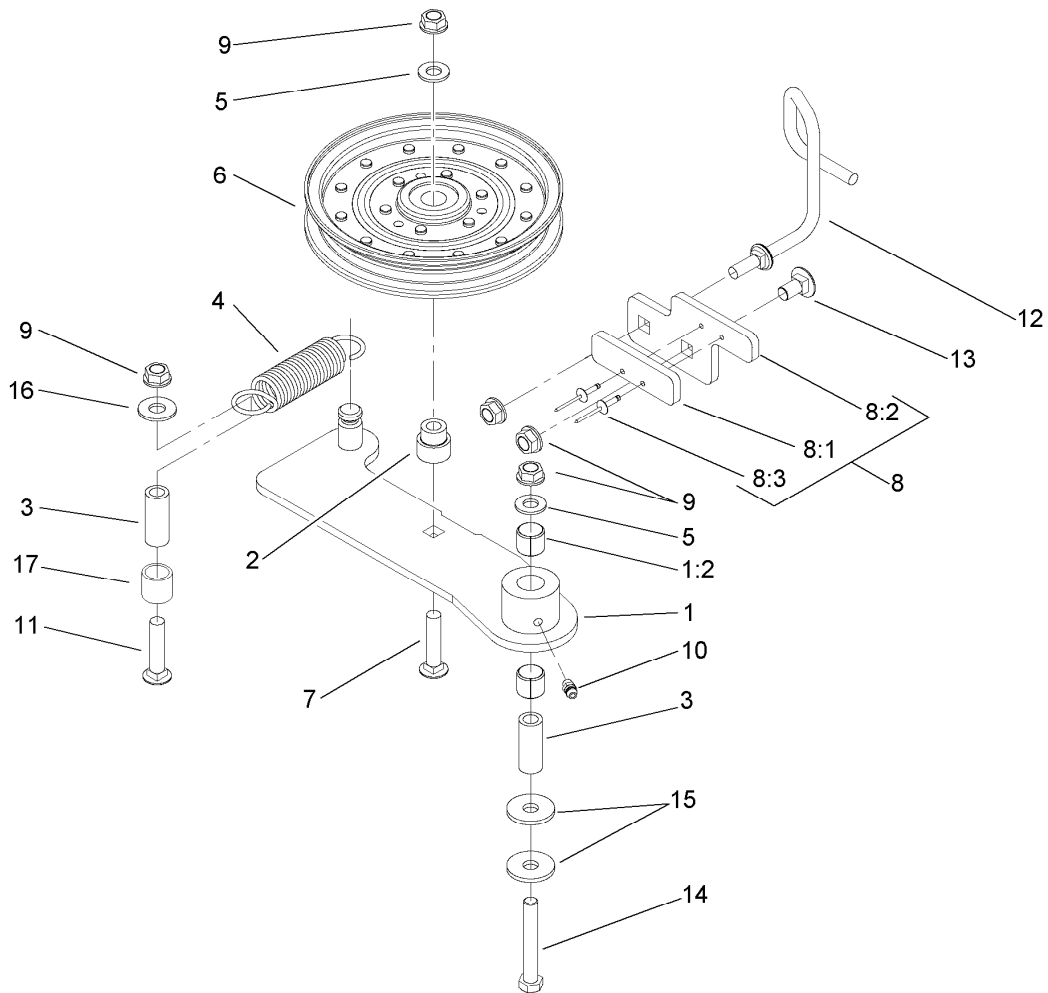


## Deck Assembly

Ref.	Part Number	Qty.	Description	Ref.	Part Number	Qty.	Description
1	106-7369	1	Belt-V	26	98-7912	1	Tube-Spanner
3	107-8536	2	Cover-Belt	27	108-4052	1	Spring-Torsion
4		1	Spring Idler ASM ■	28	105-4622	1	Spacer
5	106-7358-01	1	Plate-Skid	29	108-7770	1	Rubber Deflector ASM
6	32144-70	3	Screw-HWHTF	30	1-804254	2	Nut-Lock, HH
7	108-2177-01	1	Bracket-Cover, Tall	32	3231-31	1	Screw-CARR
8	323-28	1	Screw-HH	33	106-3214	1	Mount-Pulley
9	108-4121-01	2	Bracket-Cover	34	3256-24	3	Washer-Flat
10	106-6777	2	Handle-Latch, Swell	35	1-633109	2	Idler-Flat
11	3290-357	37	Nut-HHF, Whiz	37	3231-1	12	Screw-CARR
12	108-2178-01	1	Bracket-Cover, Short	38	99-3058	2	Washer
13	92-1624	32	Screw-HWH	39	323-9	1	Screw-HH
14	107-1683	3	Pulley	40	1-603496	1	Bushing-Idler
15	107-8504	3	Spindle ASM	41	107-8516-01	1	Plate-Idler
16	105-7781-03	3	Blade-18 Inch (Hi Flow)	42	105-7788	2	Spacer
17	323-23	1	Screw-HH	43	3231-4	2	Screw-CARR
18	98-7913	1	Tube-Spacer	44	3296-39	4	Nut-Lock, NI
19	322-50	1	Screw-HH	46	103-0862	3	Screw-Cap
20	98-5967	1	Spacer-Wheel	47	103-0865	3	Washer-Blade Bolt, Heavy
21	1-603299	3	Roller-Scalp, Anti	48	106-3216-01	1	Baffle-Discharge
22	3296-29	1	Nut-Lock, NI	99	105-7779-03	1	Blade-Recycler ●
23	114-1523	1	Deck Decal ASM	99	105-7796-03	1	Blade-Atomic ●
24	106-6778	2	Bushing-Latch, Swell	99	105-7794-03	1	Blade-Med Flow ●
25	108-2185-01	1	Baffle ASM	99	105-7795-03	1	Blade-Low Flow ●

● Optional Equipment

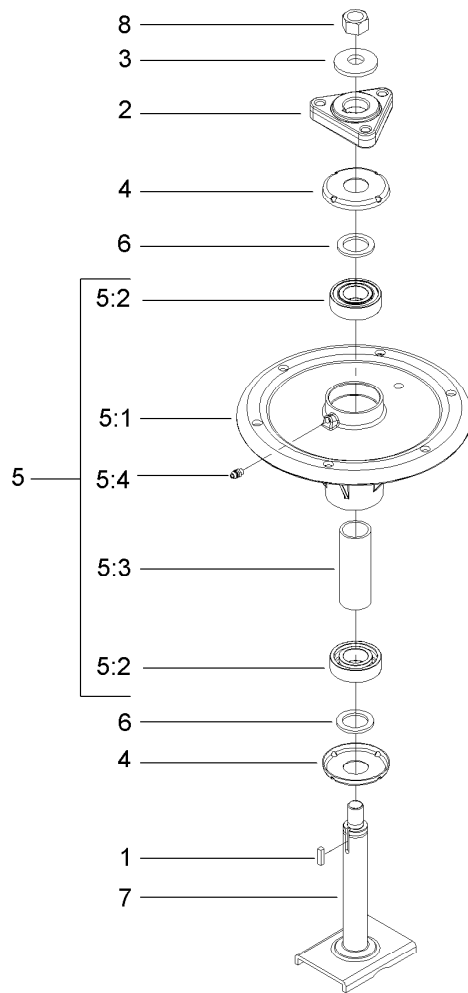
■ Not serviced separately



## Idler Assembly

<i>Ref.</i>	<i>Part Number</i>	<i>Qty.</i>	<i>Description</i>
1	108-4062	1	Idler Arm ASM
1:2	103-4681	2	Sleeve-Bearing
2	1-603496	1	Bushing-Idler
3	1-603044	2	Bushing
4	108-4056	1	Spring-Extension
5	3256-24	2	Washer-Flat
6	1-633109	1	Idler-Flat
7	3231-6	1	Screw-CARR
8		1	Stop Pad ASM ●
8:1	106-3229	1	Pad-Bumper
8:2	107-1697-01	1	Plate-Stop
8:3	3269-24	2	Rivet
9	3290-357	5	Nut-HHF, Whiz
10	302-5	1	Fitting-Grease
11	3231-31	1	Screw-CARR
12	108-4072	1	Guide-Belt
13	3231-1	1	Screw-CARR
14	323-12	1	Screw-HH
15	2844	2	Washer
16	3256-4	1	Washer-Flat
17	108-4063	1	Spacer-Rubber

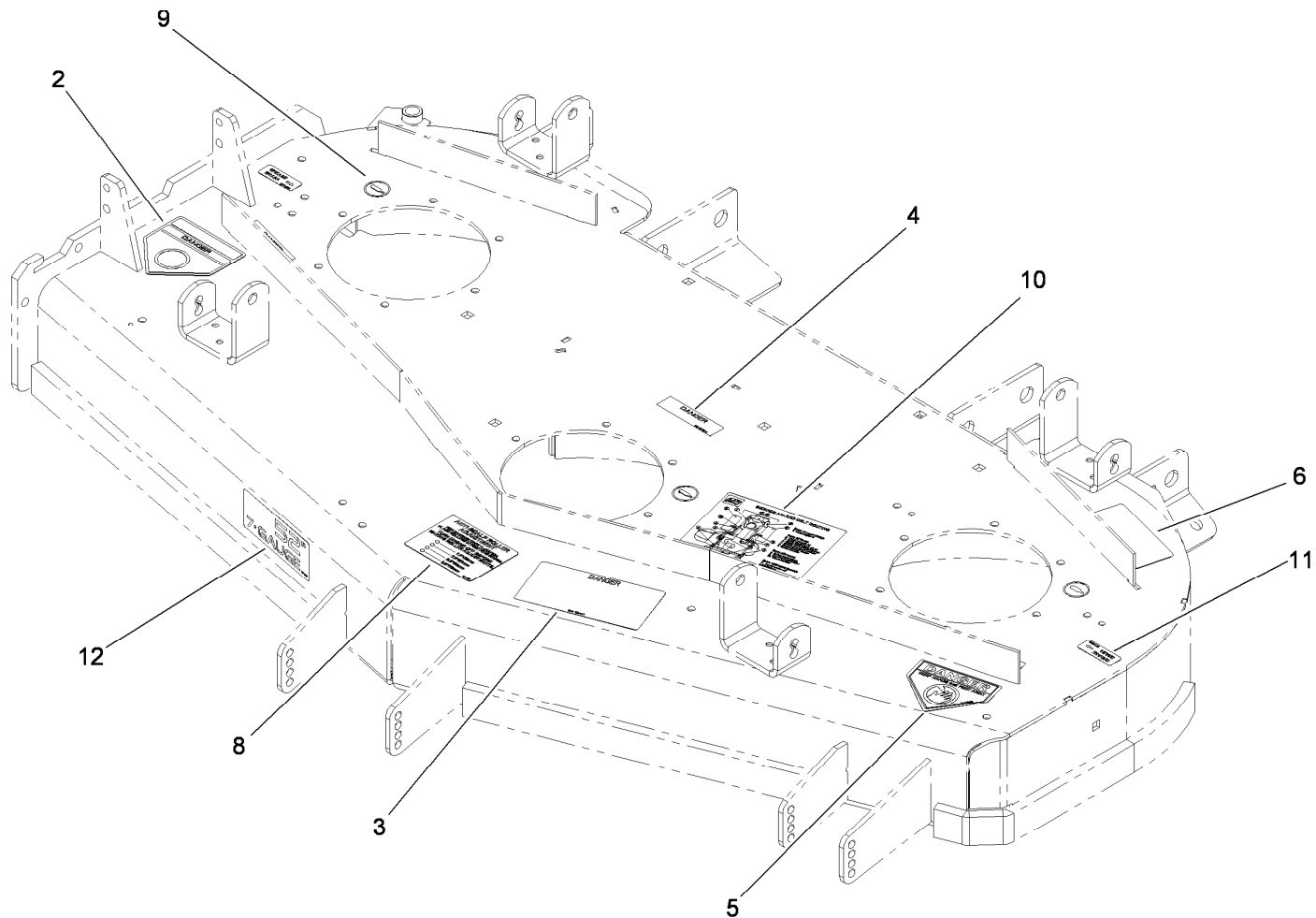
● Not serviced separately



## Spindle Assembly No. 107-8504

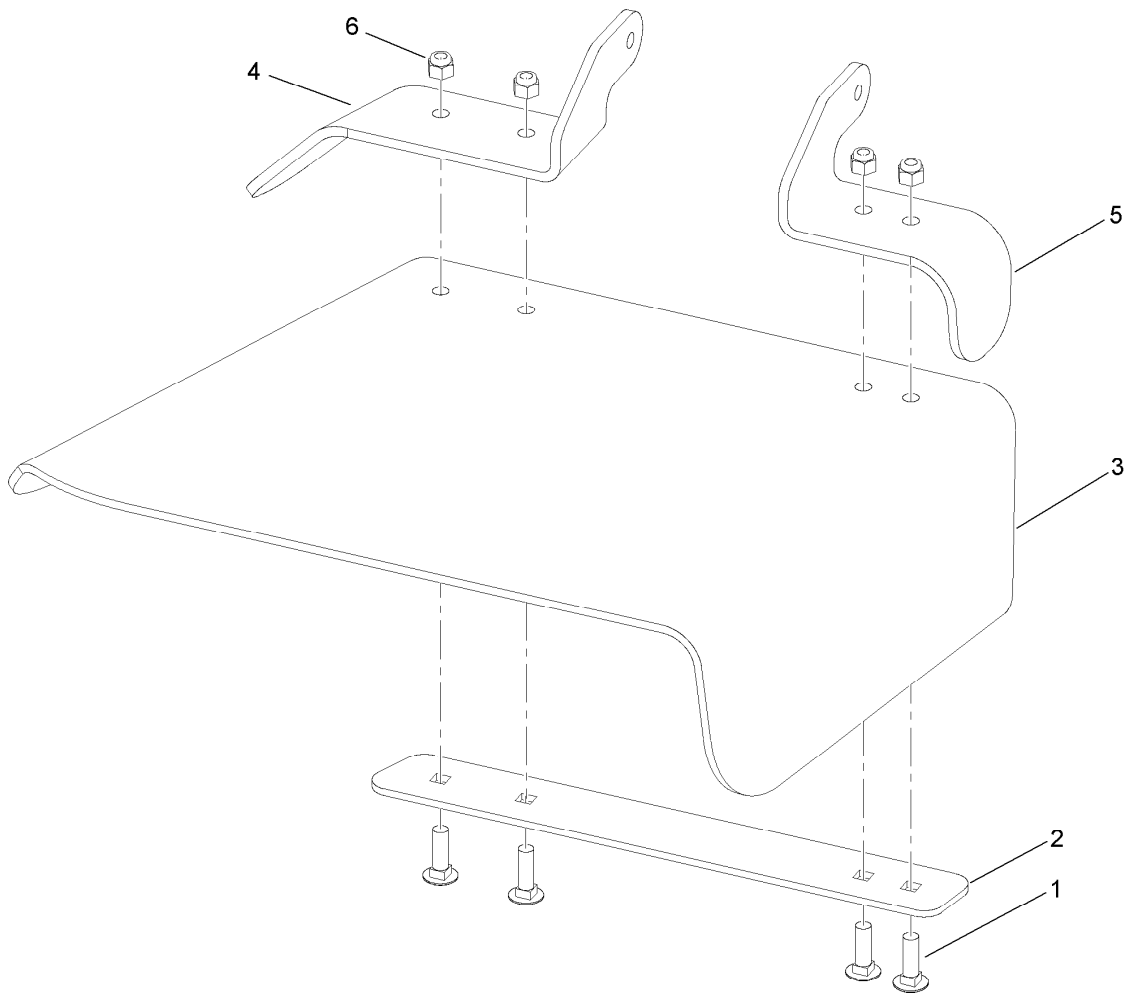
<i>Ref.</i>	<i>Part Number</i>	<i>Qty.</i>	<i>Description</i>
1	10-8040	1	Key-Square
2	106-3277	1	Hub-Pulley
3	103-0865	1	Washer-Blade Bolt, Heavy
4	106-3204	2	Shield-Bearing
5		1	Spindle Bearing ASM ●
5:1	106-3211	1	Housing-Spindle
5:2	113514	2	Bearing-Ball
5:3	107-8502	1	Spacer-Bearing
5:4	302-5	1	Fitting-Grease
6	3-8514	2	Washer-Thrust
7	107-8501	1	Spindle ASM
8	3219-6	1	Nut-Hex

● Not serviced separately



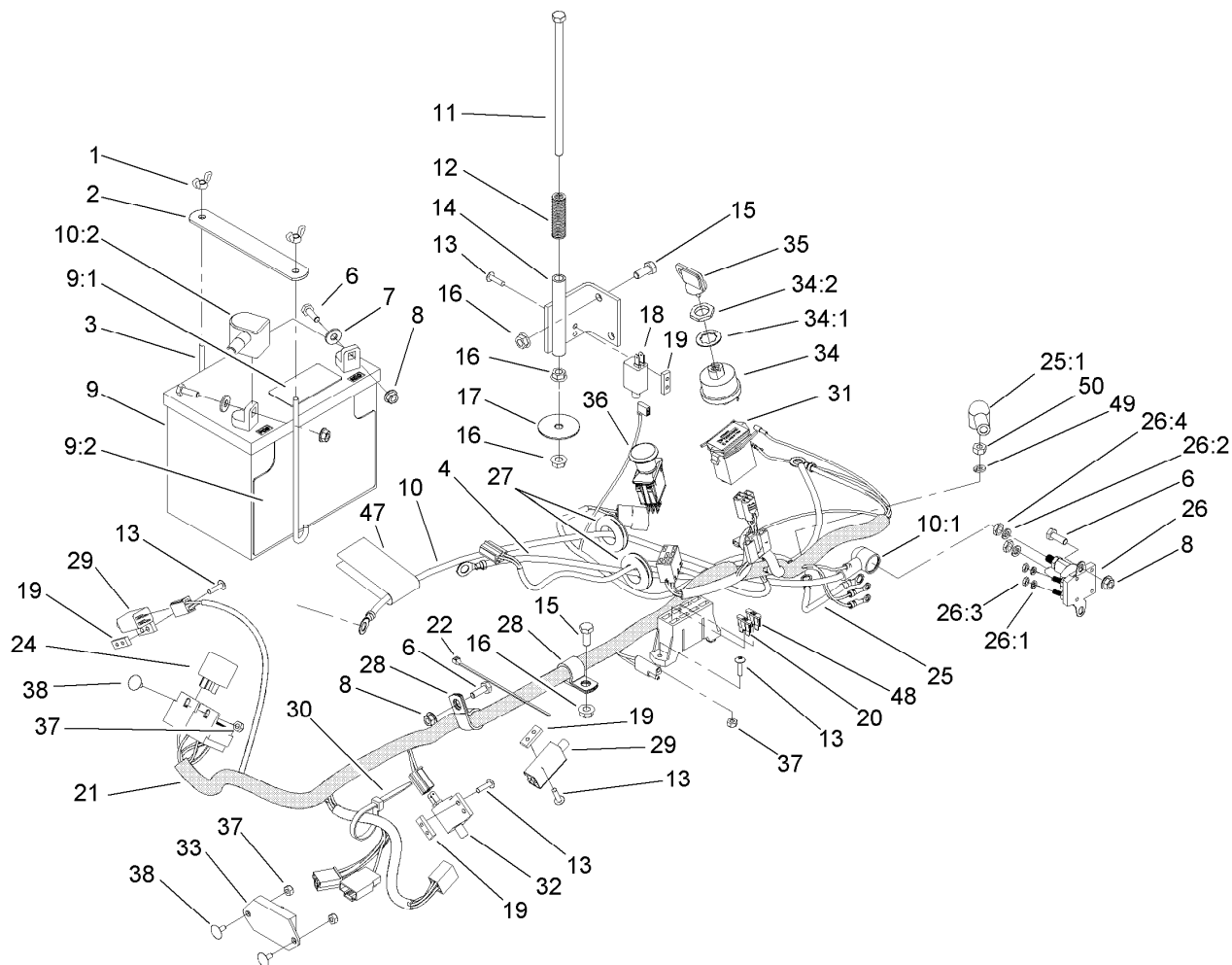
## Deck Decal Assembly No. 114-1523

<i>Ref.</i>	<i>Part Number</i>	<i>Qty.</i>	<i>Description</i>
2	54-9220	1	Decal-Danger
3	66-1340	1	Decal-Danger, Thrown Object
4	98-5954	3	Decal-Cover, Missing
5	1-403005	1	Decal-Danger
6	68-8340	1	Decal-Torque
8	105-7798	1	Decal-Scalp, Anti
9	58-6520	3	Decal-Grease
10	107-1687	1	Decal-Aid, Service
11	107-1613	2	Decal-Grease
12	107-1696	1	Decal



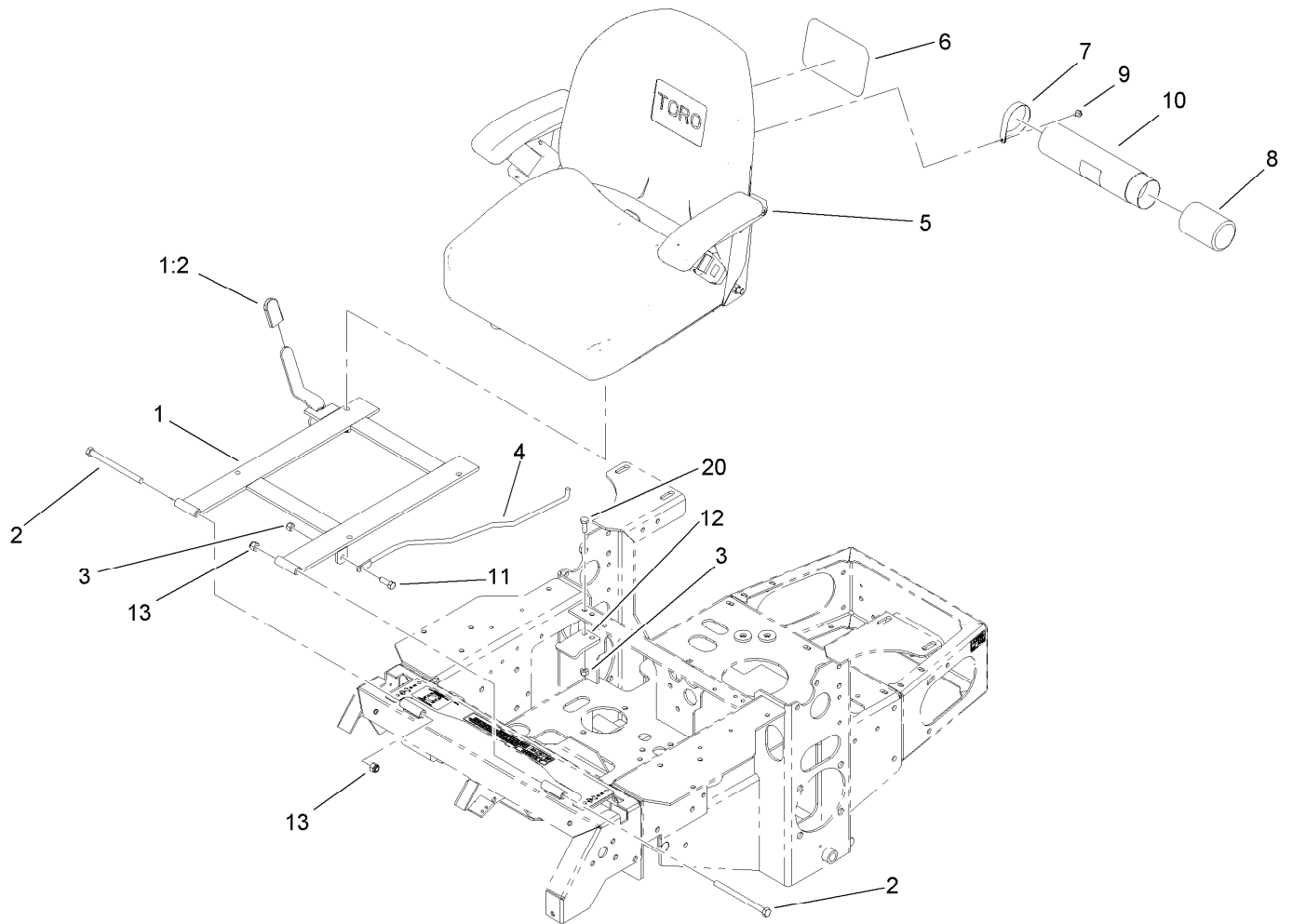
## Rubber Deflector Assembly No. 108-7770

<i>Ref.</i>	<i>Part Number</i>	<i>Qty.</i>	<i>Description</i>
1	3231-25	4	Screw-CARR
2	106-3248-03	1	Strap-Discharge
3	108-5029	1	Deflector-Rubber
4	108-7767-03	1	Bracket-Hinge, Rear
5	108-7766-03	1	Bracket-Hinge, Front
6	3296-39	4	Nut-Lock, NI



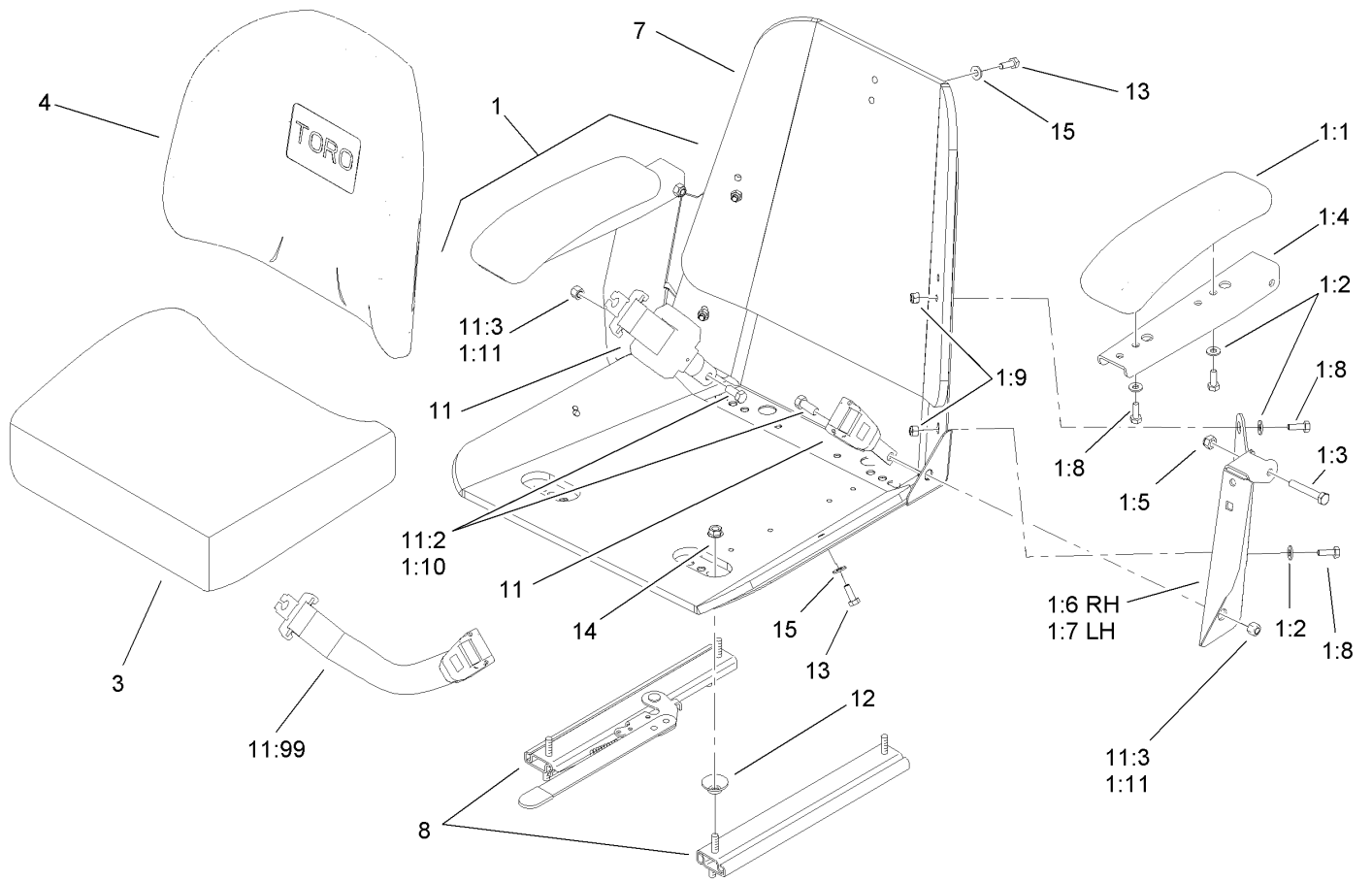
## Electrical System Assembly

<i>Ref.</i>	<i>Part Number</i>	<i>Qty.</i>	<i>Description</i>	<i>Ref.</i>	<i>Part Number</i>	<i>Qty.</i>	<i>Description</i>
1	1-543792	2	Wingnut	25	109-7620	1	Positive Starter Cable ASM
2	107-9277-03	1	Strap-Holddown, Battery	25:1	1-543393	2	Insulator-Solenoid
3	1-633651	2	Bolt-Holddown	26	1-513075	1	Switch-Solenoid
4	103-0705	1	Cable-Ground, Negative	26:1	3253-17	2	Washer-Lock
6	321-4	5	Screw-HH	26:2	3253-4	2	Washer-Lock
7	3256-2	2	Washer-Flat	26:3	3219-14	2	Nut-Hex
8	32128-33	5	Nut-HF	26:4	3220-2	2	Nut-Jam
9	105-1692	1	Battery	27	1-543286	2	Grommet
9:1	104-4163	1	Decal-Battery	28	1-633396	2	Clip-Loom
9:2	104-4164	1	Decal-Battery	29	1-513051	2	Switch-Open, Normally
10	109-7621	1	Positive Battery Cable ASM	30	1-303335	4	Tie-Plastic
10:1	1-543393	1	Insulator-Solenoid	31	1-513374	1	Meter-Hour
10:2	109-2407	1	Insulator-Battery	32	1-633111	1	Switch
11	1-800282	1	Screw-HH	33	100-6186	1	Module-Delay, Seat
12	1-523415	1	Spring-Switch, Seat	34	104-2541	1	Switch ASM
13	1-803075	10	Screw-Head, Truss	34:1	218-461	1	Nut-HH
14	1-652072-03	1	Bracket-Switch, Seat	34:2	3254-5	1	Washer-Tooth, Internal
15	322-3	3	Screw-HH	35	63-8360	2	Key-Ignition
16	32128-20	5	Nut-HF	36	103-5221	1	Switch-PTO
17	1-653036	1	Washer	37	3296-2	6	Nut-Lock, NI
18	1-513152	1	Switch-Closed, Normally	38	1-807513	4	Bolt-CARR
19	1-633181	4	Plate-Tapped	47	107-9309	1	Decal-Instructions, Charging
20	109103	1	Fuse-Blade, 30 Amp	48	109102	1	Fuse-Blade, 25 Amp
21	110-0318	1	Harness-Electrical	49	1-805004	1	Washer-Lock
22	1-303287	3	Tie-Cable	50	3217-5	1	Nut-Hex
24	1-643275	2	Relay				



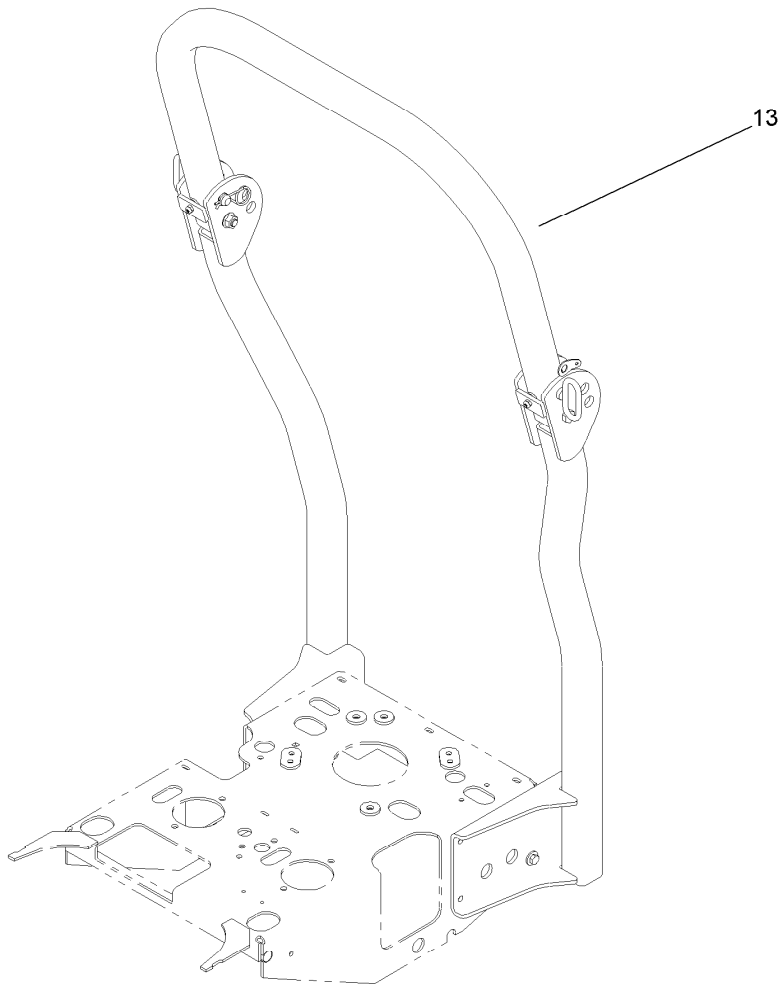
## Seat and Bracket Assembly

<i>Ref.</i>	<i>Part Number</i>	<i>Qty.</i>	<i>Description</i>
1	110-5850	1	Seat Frame And Latch ASM
1:2	103-4434	1	Grip-Lever
2	323-39	2	Screw-HH
3	3296-29	3	Nut-Lock, NI
4	103-1731	1	Rod-Retainer, Seat
5	110-0446	1	Seat ASM
6	99-4693	1	Decal
7	2412-120	2	R-Clamp
8	104-7048	1	Cap-Housing
9	32104-76	2	Screw
10	104-7050	1	Tube-Manual
11	322-5	1	Screw-HH
12	103-5961	1	Catch-Latch, Seat
13	3296-39	2	Nut-Lock, NI
20	322-4	2	Screw-HH



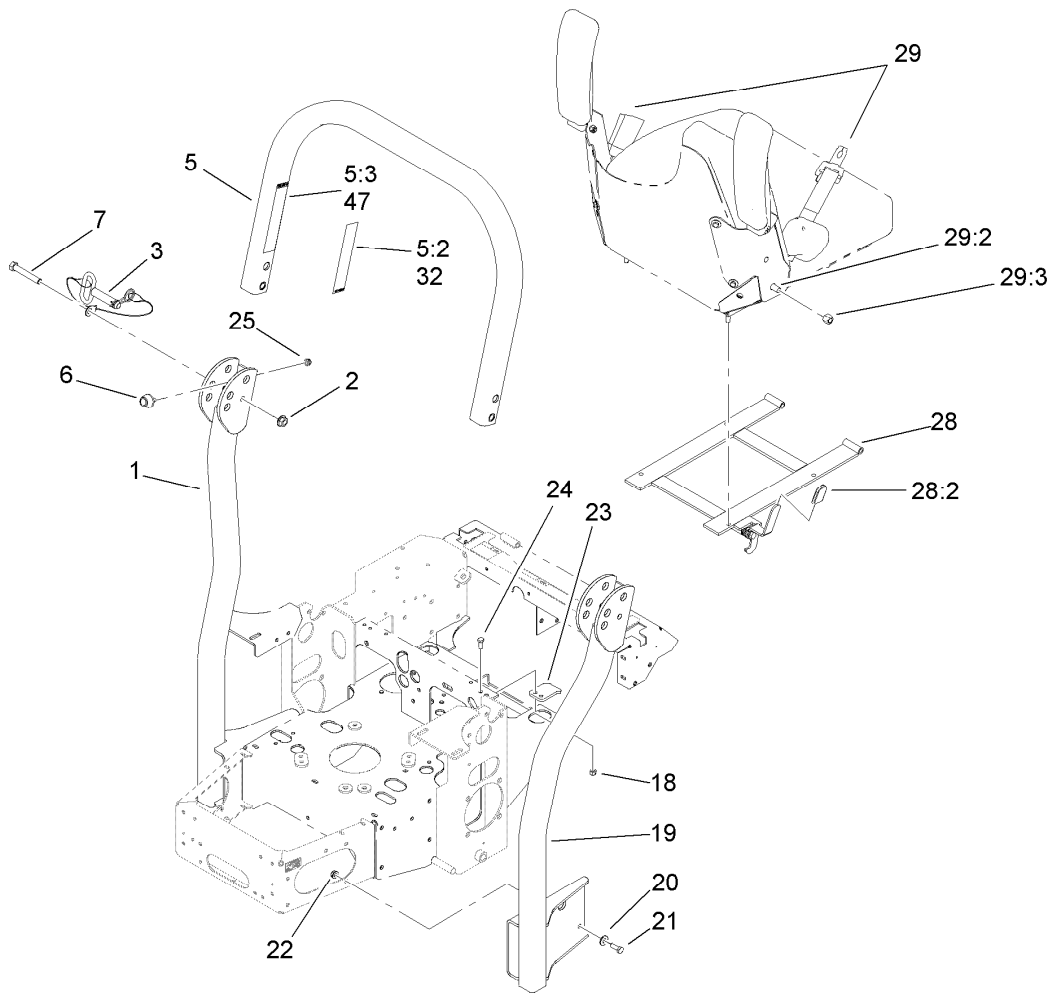
## Seat and Bracket Assembly No. 110-0446

Ref.	Part Number	Qty.	Description
1	110-5719	1	Armrest Kit
1:1	110-4163	2	Cushion-Rest, Arm
1:2	3256-22	4	Washer-Flat
1:3	322-10	2	Screw-HH
1:4	105-3623	2	Channel-Armrest
1:5	32153-3	2	Nut-Hex, Side Deform
1:6	105-3621	1	Bracket-Armrest, RH
1:7	105-3622	1	Bracket-Armrest, LH
1:8	321-30	8	Screw-HH
1:9	3296-42	4	Nut-Lock, NI
1:10	325-2	2	Screw-HH
1:11	3296-23	2	Nut-Lock, NI
3	110-4162	1	Cushion-Seat, Bottom
4	110-0447	1	Cusion-Seat, Back
7	1-633859	1	Frame-Seat
8	1-643255	1	Track-Seat
11	110-0883	1	Retractable Seatbelt Kit
11:2	3212-4	2	Screw-HH
11:3	3296-7	2	Nut-Lock
11:99	109-6226	1	Seat Belt Extension Kit
12	1-543401	4	Spacer-Track
13	321-30	5	Screw-HH
14	32128-20	4	Nut-HF
15	3256-22	5	Washer-Flat



## Roll-Over Protection System Assembly

<i>Ref.</i>	<i>Part Number</i>	<i>Qty.</i>	<i>Description</i>
13	107-8093	1	ROPS ASM

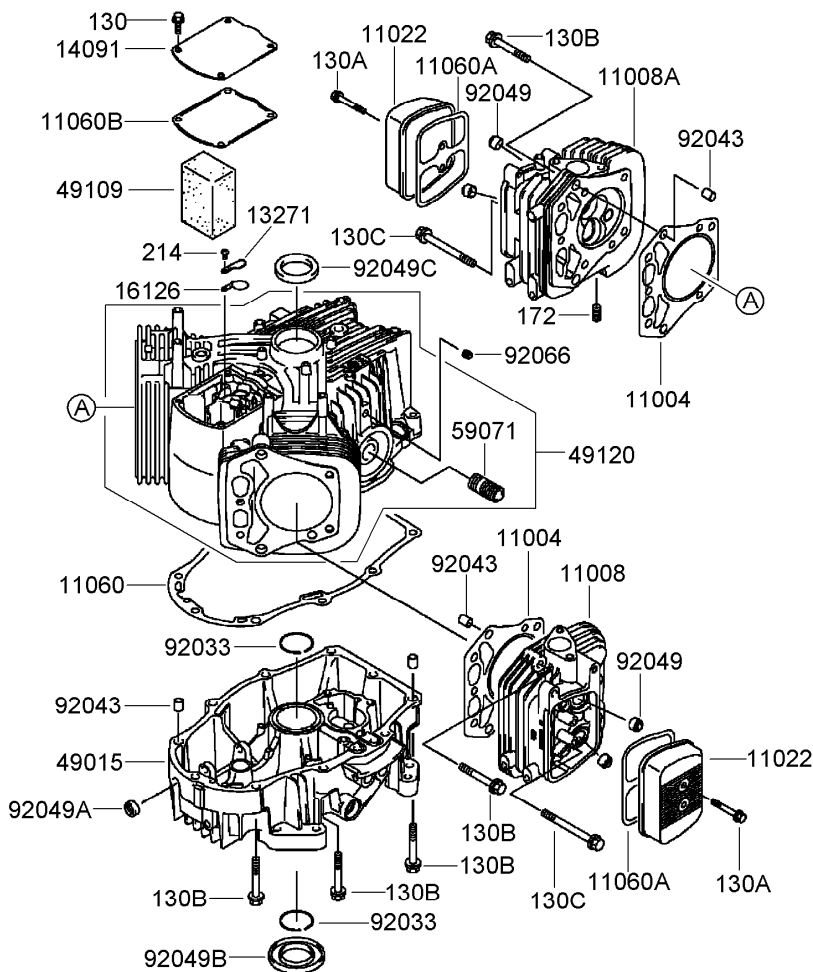


## Roll-Over Protection System Assembly No. 107-8093

Ref.	Part Number	Qty.	Description
1		1	LH Tube Support ASM ■
2	32128-23	2	Nut-HF
3	103-4553	2	ROPS Fold Pin ASM
5		1	Upper Tube ASM ■
5:2	107-2100	1	Decal
5:3	107-2102	1	Decal-Warning, Folding ROPS
6	109-2365	2	Rubber Bumper ASM (W/Stud)
7	325-13	2	Screw-HH
18	3296-29	2	Nut-Lock, NI
19		1	RH Tube Support ASM ■
20	98-5975	8	Washer-Belleville
21	323-6	8	Screw-HH
22	3290-357	8	Nut-HHF, Whiz
23	107-3059	1	Catch-Latch, Seat
24	322-4	2	Screw-HH
25	3296-73	2	Nut-Lock, NI
28	110-5850	1	Seat Frame And Latch ASM
28:2	103-4434	1	Grip-Lever
29	110-0883	1	Retractable Seatbelt Kit
29:2	3212-4	2	Screw-HH
29:3	3296-7	2	Nut-Lock
29:99	109-6226	1	Seat Belt Extension Kit ●
32	107-3069	1	Decal-Warning, Folding ROPS
47	107-2102	1	Decal-Warning, Folding ROPS

● Not illustrated

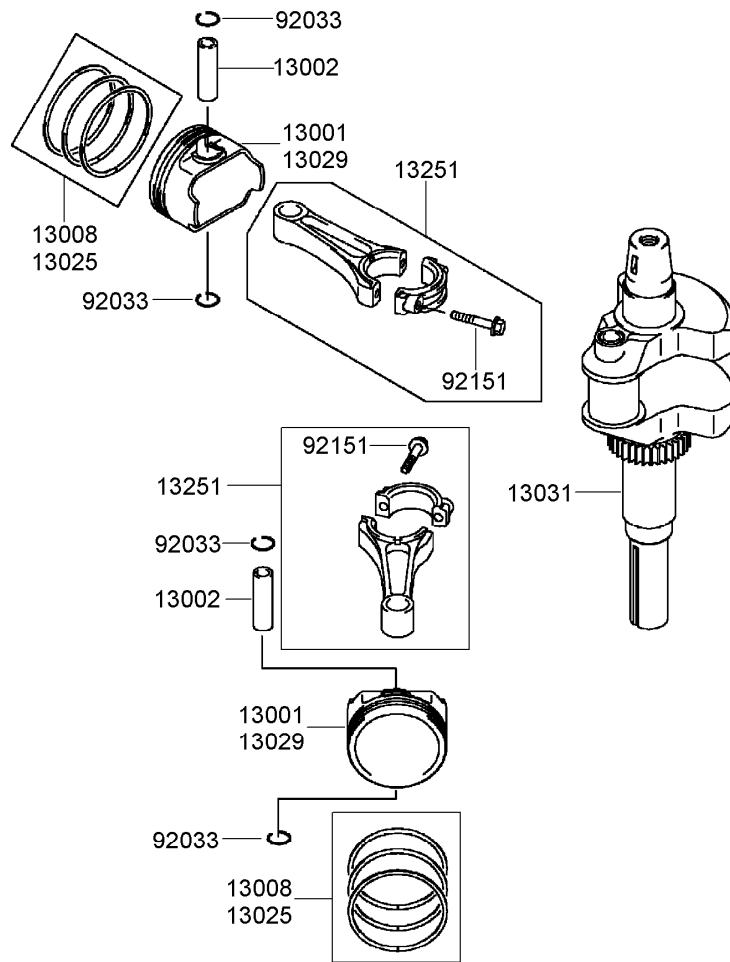
■ Not serviced separately



## Cylinder and Crankcase Assembly Kawasaki FH641V-DS19-R

Ref.	Part Number	Qty.	Description	Ref.	Part Number	Qty.	Description
11004	11004-7006	2	Gasket-Head ●	92049	92049-7001	4	Seal-Oil, R V C2 (6X11X10.2) ●
11008	11008-7023	1	Head-Cylinder, No.2 ●	92049A	92049-7005	1	Seal-Oil, S O (8X14X5 H S) ●
11008A	11008-7024	1	Head-Cylinder, No.1 ●	92049B	92049-7011	1	Seal-Oil, S D (35X62X8 L H S) ●
11022	11022-7002	2	Case-Rocker ●	92049C	92049-7014	1	Seal-Oil, S D (35X52X7 R H S) ●
11060	11060-7012	1	Gasket-Cover, Crankcase ●	92066	92066-7002	1	Plug ●
11060A	11060-7013	2	Gasket-Case, Rocker ●	130	130B0612	4	Bolt-Flanged (6X12) ●
11060B	11060-7014	1	Gasket-Breather ●	130A	130B0640	4	Bolt-Flanged (6X40) ●
13271	13271-7006	1	Plate ●	130B	130T0850	18	Bolt-Flanged (8X50) ●
14091	14091-7004	1	Cover ●	130C	130T0875	2	Bolt-Flanged (8X75) ●
16126	16126-7001	1	Valve ●	172	172G0818	4	Bolt-Stud (8X18) ●
49015	49015-7064	1	Cover-Crankcase ●	214	214B0408	1	Screw-Pan (4X8) ●
49109	49109-7003	1	Element-Breather ●				
49120	49120-7037	1	Crankcase ●				
59071	59071-2079	1	Joint ●				
92033	92033-7004	2	Ring-Snap ●				
92043	92043-7001	6	Pin ●				

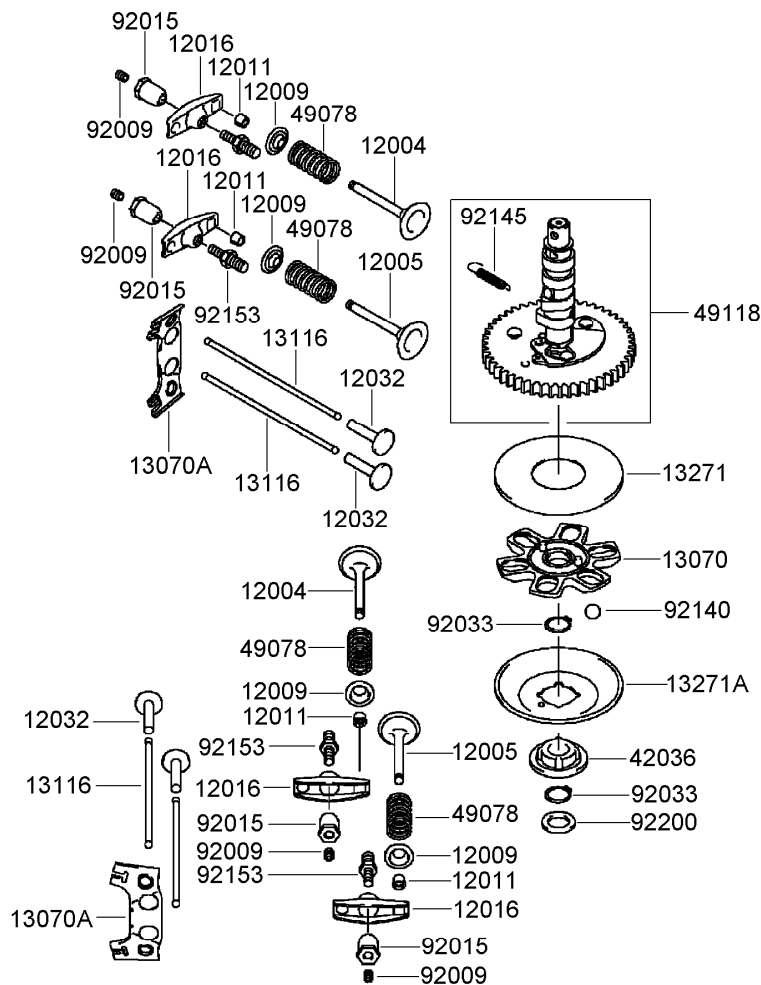
● Obtain parts from [www.kawpowerepc.com](http://www.kawpowerepc.com)



## Piston and Crankshaft Assembly Kawasaki FH641V-DS19-R

<i>Ref.</i>	<i>Part Number</i>	<i>Qty.</i>	<i>Description</i>
13001	13001-7007	2	Piston-Engine ●
13002	13002-7001	2	Pin-Piston ●
13008	13008-6058	2	Piston Ring Set ●
13025	13025-7002	1	Piston Ring Set (L, 0.50) ●
13029	13029-7003	1	Piston-Engine (L, 0.50) ●
13031	13031-7048	1	Crankshaft ●
13251	13251-7005	2	Connecting Rod ASM ●
92033	92033-7002	4	Ring-Snap ●
92151	92151-7017	4	Bolt (6X35) ●

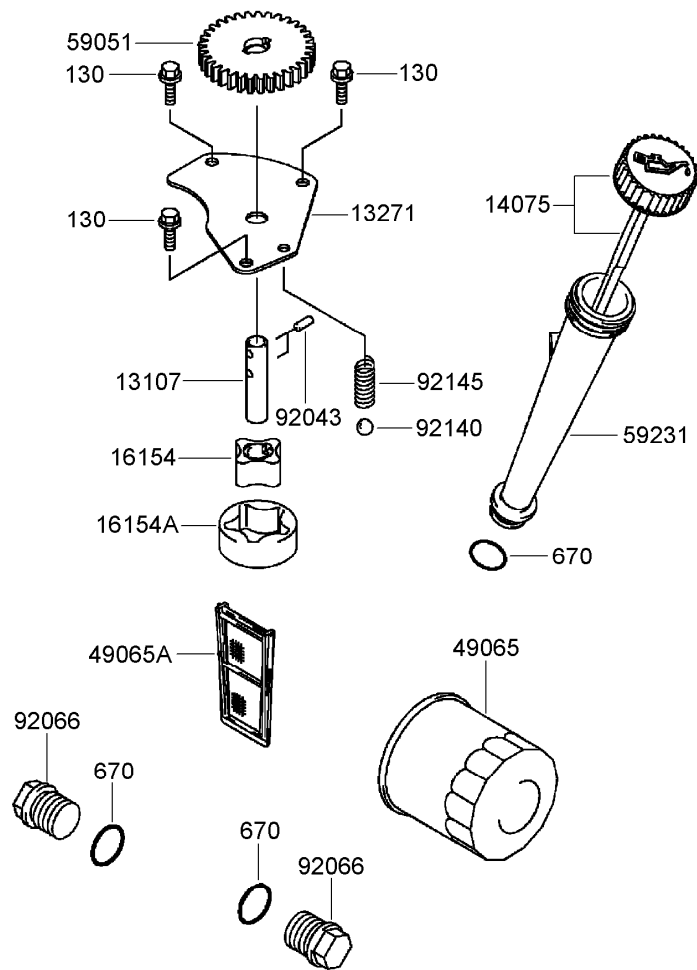
● Obtain parts from [www.kawpowerepc.com](http://www.kawpowerepc.com)



## Valve and Camshaft Assembly Kawasaki FH641V-DS19-R

Ref.	Part Number	Qty.	Description
12004	12004-7002	2	Valve-Intake ●
12005	12005-7004	2	Valve-Exhaust ●
12009	12009-7001	4	Retainer-Spring, Valve ●
12011	12011-2056	8	Collet ●
12016	12016-7007	4	Arm-Rocker ●
12032	12032-7001	4	Tappet ●
13070	13070-7004	1	Guide ●
13070A	13070-7007	2	Guide ●
13116	13116-7002	4	Rod-Push ●
13271	13271-7007	1	Plate ●
13271A	13271-7021	1	Plate-Governor ●
42036	42036-7010	1	Sleeve ●
49078	49078-7002	4	Spring-Valve, Engine (Intake) ●
49118	49118-7007	1	Camshaft ●
92009	92009-2341	4	Screw ●
92015	92015-2253	4	Nut ●
92033	92033-7001	2	Ring-Snap ●
92140	92140-7002	6	Ball ●
92145	92145-7001	1	Spring ●
92153	92153-7019	4	Bolt ●
92200	92200-7001	1	Washer ●

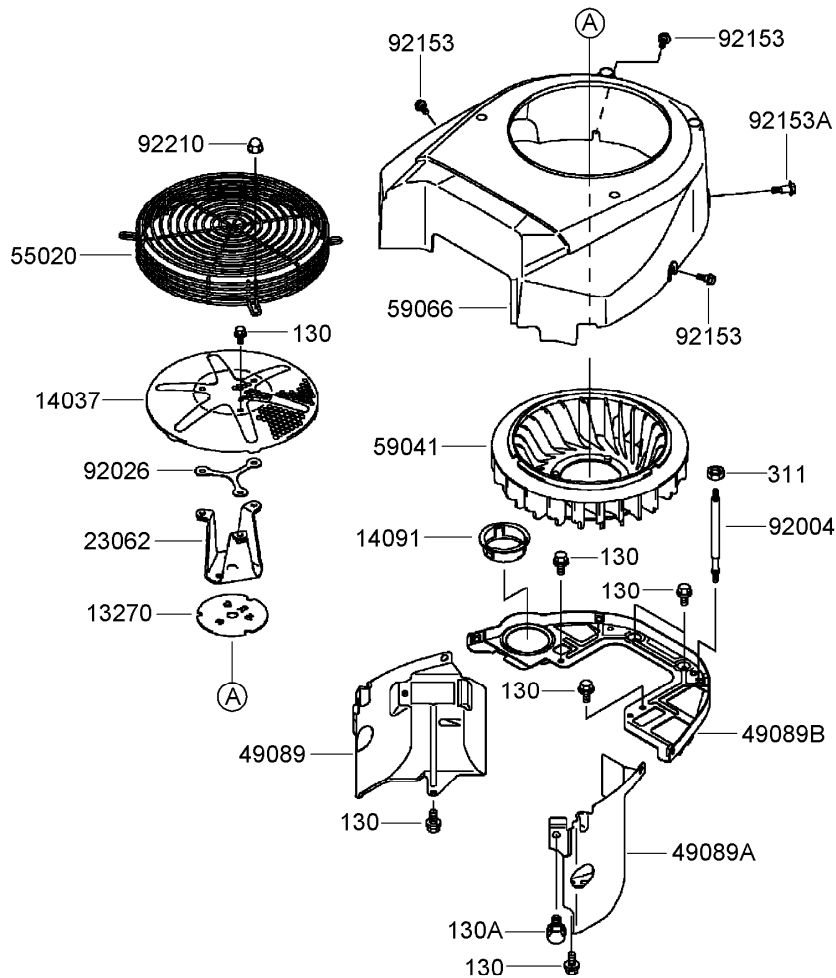
● Obtain parts from [www.kawpowerepc.com](http://www.kawpowerepc.com)



## Lubrication Equipment Assembly Kawasaki FH641V-DS19-R

<i>Ref.</i>	<i>Part Number</i>	<i>Qty.</i>	<i>Description</i>
13107	13107-7009	1	Shaft ●
13271	13271-7005	1	Plate ●
14075	14075-7008	1	Cap ASM ●
16154	16154-7007	1	Rotor-Pump (In) ●
16154A	16154-7008	1	Rotor-Pump (Out) ●
49065	49065-2078	1	Filter-Oil ●
49065A	49065-7003	1	Filter-Oil ●
59051	59051-7011	1	Gear-Spur ●
59231	59231-7006	1	Filler ●
92043	92043-7003	2	Pin ●
92066	92066-7003	2	Plug ●
92140	92140-7003	1	Ball ●
92145	92145-7002	1	Spring ●
130	130B0612	3	Bolt-Flanged (6X12) ●
670	670D2016	3	O-Ring (16Mm) ●

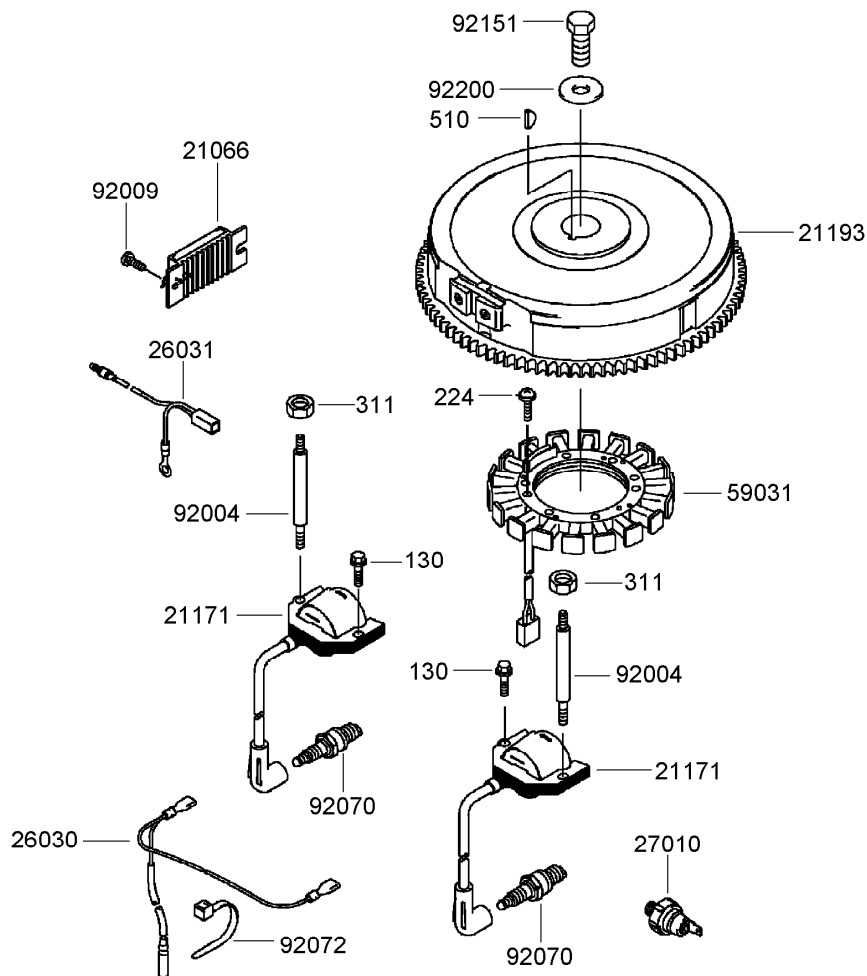
● Obtain parts from [www.kawpowerepc.com](http://www.kawpowerepc.com)



## Cooling Equipment Assembly Kawasaki FH641V-DS19-R

Ref.	Part Number	Qty.	Description
13270	13270-7007	1	Plate ●
14037	14037-7008-9H	1	Screen ●
14091	14091-7002	1	Cover ●
23062	23062-7005	1	Bracket ●
49089	49089-7004	1	Shroud-Engine ●
49089A	49089-7005	1	Shroud-Engine ●
49089B	49089-7049	1	Shroud-Engine ●
55020	55020-7007	1	Guard ●
59041	59041-7003	1	Fan ●
59066	59066-7004	1	Housing-Fan ●
92004	92004-7006	2	Stud ●
92026	92026-7007	1	Spacer ●
92153	92153-7007	3	Bolt ●
92153A	92153-7008	1	Bolt ●
92210	92210-0003	4	Nut ●
130	130B0612	9	Bolt-Flanged (6X12) ●
130A	130B0816	1	Bolt-Flanged (8X16) ●
311	311B0600	2	Nut-Hex (6Mm) ●

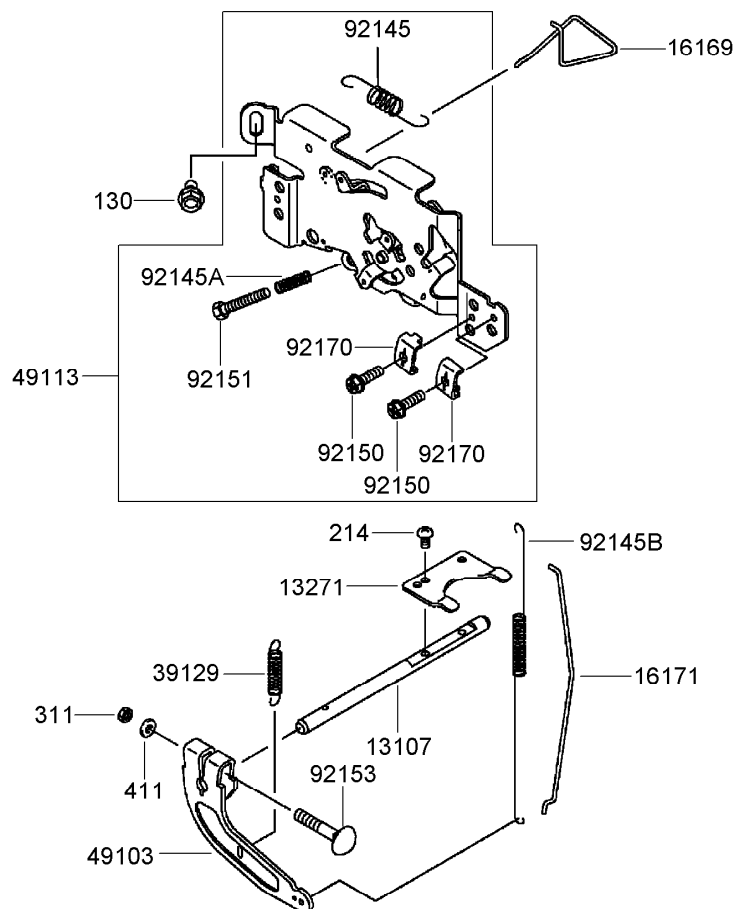
● Obtain parts from [www.kawpowerepc.com](http://www.kawpowerepc.com)



## Electric Equipment Assembly Kawasaki FH641V-DS19-R

Ref.	Part Number	Qty.	Description
21066	21066-7011	1	Regulator-Voltage ●
21171	21171-7013	2	Ignition Coil ASM ●
21193	21193-7019	1	Flywheel ASM ●
26030	26030-7002	1	Harness ●
26031	26031-7003	1	Harness ●
27010	27010-7001	1	Switch ●
59031	59031-7009	1	Coil-Charging ●
92004	92004-7009	2	Stud ●
92009	92009-2308	1	Screw ●
92070	92070-7004	2	Sparkplug (B P R4 E S (N G K) Solid) ●
92072	92072-7003	3	Band ●
92151	92151-2097	1	Bolt (12X30) ●
92200	92200-7002	1	Washer ●
130	130B0620	2	Bolt-Flanged (6X20) ●
224	224B0520	4	Screw-Pan (5X20) ●
311	311B0600	2	Nut-Hex (6Mm) ●
510	510A5100	1	Key-Woodruff ●

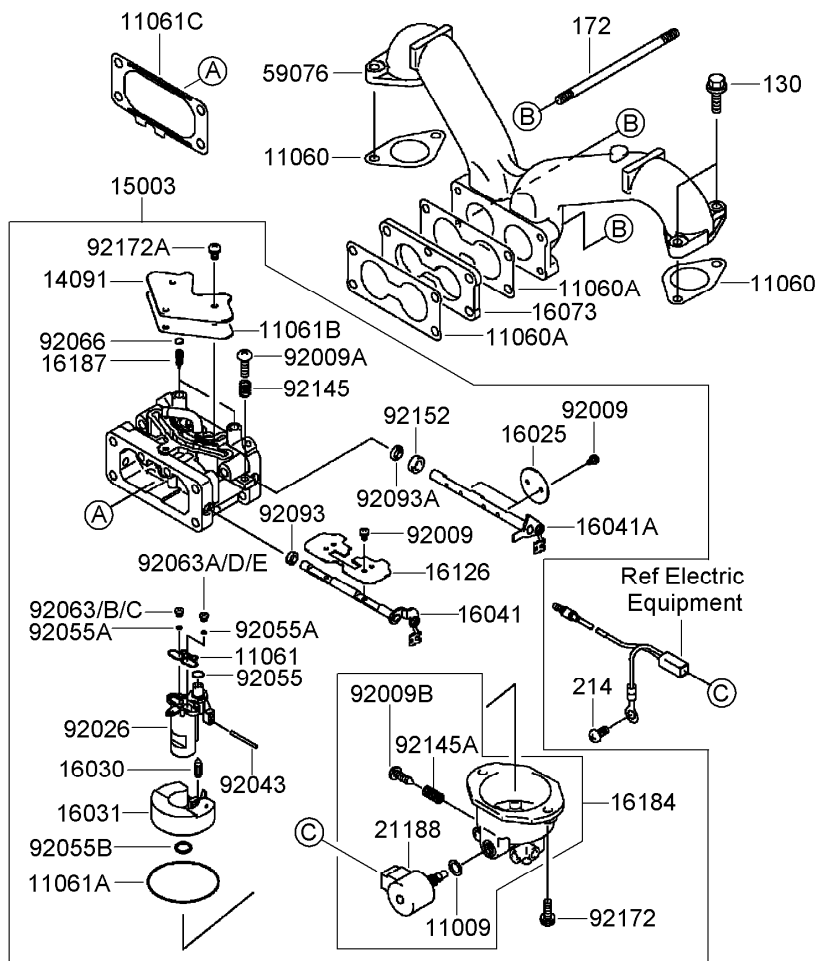
● Obtain parts from [www.kawpowerepc.com](http://www.kawpowerepc.com)



## Control Equipment Assembly Kawasaki FH641V-DS19-R

Ref.	Part Number	Qty.	Description
13107	13107-7013	1	Shaft ●
13271	13271-7032	1	Plate ●
16169	16169-7006	1	Link-Choke ●
16171	16171-7004	1	Link ●
39129	39129-7004	1	Spring-Governor ●
49103	49103-7004	1	Arm-Governor ●
49113	49113-7017	1	Panel-Control ●
92145	92145-7004	1	Spring ●
92145A	92145-7005	1	Spring ●
92145B	92145-7034	1	Spring ●
92150	92150-2182	2	Bolt (5X18) ●
92151	92151-7014	1	Bolt (5X30) ●
92153	92153-7033	1	Bolt (6X35) ●
92170	92170-7001	2	Clamp ●
130	130B0612	2	Bolt-Flanged (6X12) ●
214	214B0408	2	Screw-Pan (4X8) ●
311	311B0600	1	Nut-Hex (6Mm) ●
411	411B0600	1	Washer-Plain (6Mm) ●

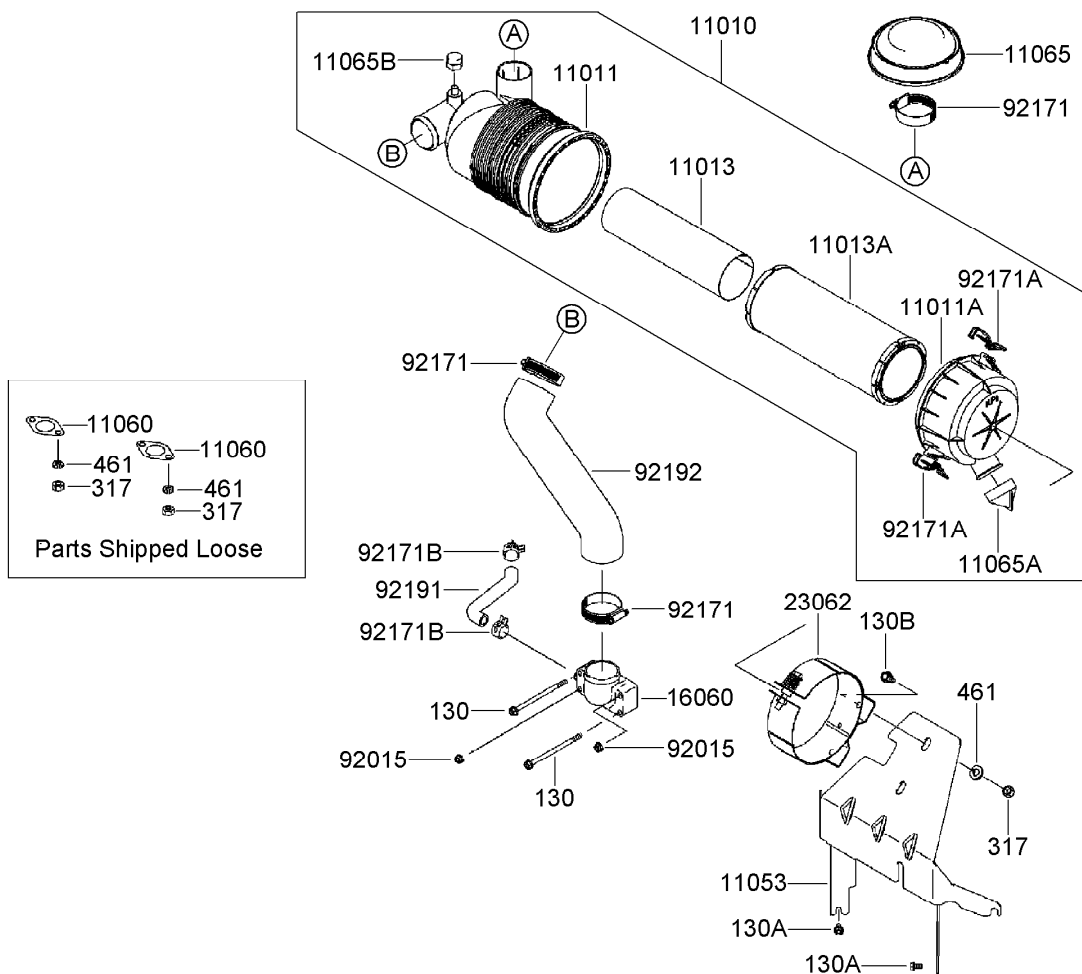
● Obtain parts from [www.kawpowerepc.com](http://www.kawpowerepc.com)



## Carburetor Assembly Kawasaki FH641V-DS19-R

Ref.	Part Number	Qty.	Description	Ref.	Part Number	Qty.	Description
11009	11009-2056	1	Gasket ●	92026	92026-7011	1	Spacer ●
11060	11060-7011	2	Gasket-Manifold ●	92043	92043-7014	1	Pin ●
11060A	11060-7024	2	Gasket-Carburetor ●	92055	92055-7012	1	O-Ring ●
11061	11061-7037	1	Gasket ●	92055A	92055-7013	2	O-Ring ●
11061A	11061-7038	1	Gasket ●	92055B	92055-7016	1	O-Ring ●
11061B	11061-7039	1	Gasket ●	92063	92063-7051	1	Jet-Main, No.104 ●
11061C	11061-7043	1	Gasket ●	92063A	92063-7054	1	Jet-Main, No.108 ●
14091	14091-7031	1	Cover ●	92063B	92063-7075	1	Jet-Main, No.101 (3280 Ft) ●
15003	15003-7119	1	Carburetor ASM ●	92063C	92063-7076	1	Jet-Main, No.098 (6560 Ft) ●
16025	16025-7003	2	Valve-Throttle ●	92063D	92063-7077	1	Jet-Main, No.105 (3280 Ft) ●
16030	16030-7004	1	Valve-Float ●	92063E	92063-7078	1	Jet-Main, No.102 (6560 Ft) ●
16031	16031-7003	1	Float ●	92066	92066-7009	2	Plug-Expansion ●
16041	16041-7021	1	Shaft-Carburetor ●	92093	92093-7001	1	Seal (I D 5.9) ●
16041A	16041-7023	1	Shaft-Carburetor ●	92093A	92093-7002	1	Seal (I D 6.9) ●
16073	16073-7005	1	Insulator ●	92145	92145-7010	1	Spring ●
16126	16126-7015	1	Valve ●	92145A	92145-7011	1	Spring ●
16184	16184-7017	1	Chamber Float ASM ●	92152	92152-7005	1	Collar ●
16187	16187-7002	2	Needle-Jet ●	92172	92172-7005	2	Screw (M5 ) ●
21188	21188-7003	1	Solenoid ●	92172A	92172-7006	3	Screw (M4 ) ●
59076	59076-7002	1	Manifold-Intake ●	130	130B0620	4	Bolt-Flanged (6X20) ●
92009	92009-7003	6	Screw ●	172	172G06105	2	Bolt-Stud (6X10.5 ) ●
92009A	92009-7004	1	Screw ●	214	214B0510	1	Screw-Pan (5X10) ●
92009B	92009-7006	1	Screw-Drain ●				

● Obtain parts from [www.kawpowerepc.com](http://www.kawpowerepc.com)

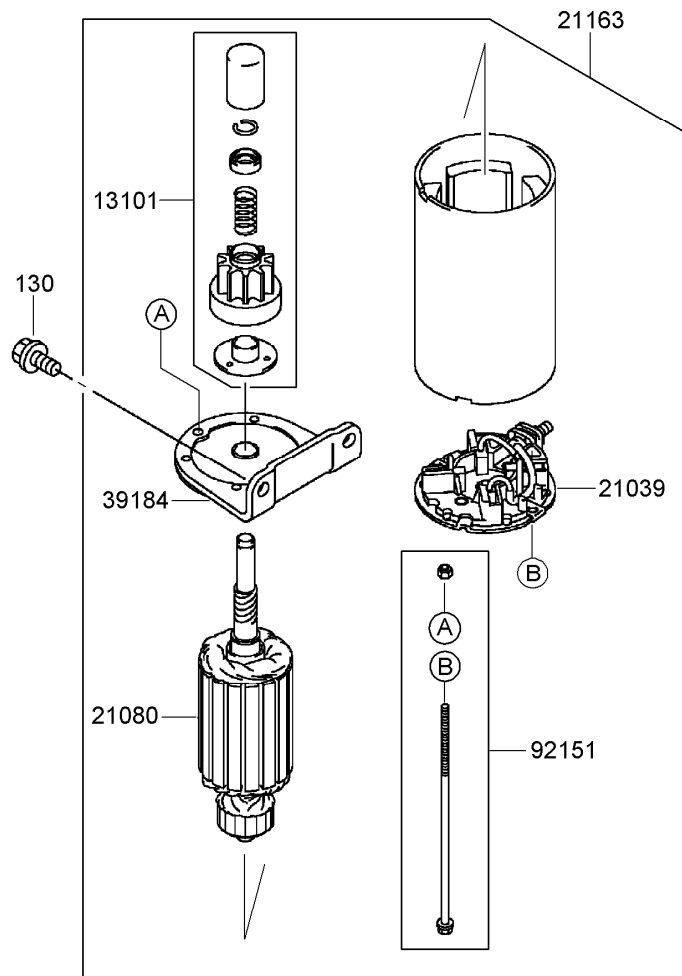


## Air Filter and Muffler Assembly Kawasaki FH641V-DS19-R

Ref.	Part Number	Qty.	Description
11010	11010-7011	1	Air Filter ASM ●
11011	11011-7013	1	Case-Filter, Air ●
11011A	11011-7014	1	Case-Filter, Air ●
11013	11013-7019	1	Element-Filter, Air ●
11013A	11013-7020	1	Element-Filter, Air ●
11053	11053-7016	1	Bracket ●
11060	11060-7016	2	Gasket-Muffler ●
11065	11065-7006	1	Cap ●
11065A	11065-7008	1	Cap ●
11065B	11065-7009	1	Cap ●
16060	16060-7021	1	Pipe-Intake ●
23062	23062-7009	1	Bracket ●
92015	92015-1193	2	Nut ●
92171	92171-7007	3	Clamp ●
92171A	92171-7009	2	Clamp ●
92171B	92171-7013	2	Clamp ●
92191	92191-7006	1	Tube ●
92192	92192-7030	1	Tube ●
130	130B06105	2	Bolt-Flanged (6X10.5) ●
130A	130B0612	2	Bolt-Flanged (6X12) ●
130B	130B0814	2	Bolt-Flanged (8X14) ●
317	317R0800	6	Nut-Hex, Small (8Mm) ●
461	461F0800	6	Washer-Spring (8Mm) ●

● Obtain parts from [www.kawpowerepc.com](http://www.kawpowerepc.com)



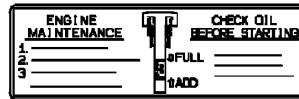


## Starter Assembly Kawasaki FH641V-DS19-R

<i>Ref.</i>	<i>Part Number</i>	<i>Qty.</i>	<i>Description</i>
13101	13101-7003	1	Gear ASM ●
21039	21039-7004	1	Brush ●
21080	21080-7001	1	Armature ●
21163	21163-7010	1	Starter-Electric ●
39184	39184-7004	1	Bracket ASM ●
92151	92151-7013	1	Bolt ●
130	130B0816	2	Bolt-Flanged (8X16) ●

● Obtain parts from [www.kawpowerepc.com](http://www.kawpowerepc.com)

56033



56080



## Label Assembly Kawasaki FH641V-DS19-R

<i>Ref.</i>	<i>Part Number</i>	<i>Qty.</i>	<i>Description</i>
56033	56033-7003	1	Label-Manual •
56080	56080-7008	1	Label-Brand •

• Obtain parts from [www.kawpowerepc.com](http://www.kawpowerepc.com)

# Attachments and Accessories

## For 74449 Z400 Z Master With 52in 7-Gauge Side Discharge Mower

<b>Product Name</b>	<b>Model/Part</b>
Blade-Recycler, 18 inch .....	105-7779-03
Blade-Hi Flow, 18 Inch .....	105-7781-03
Blade-Med Flow, 18 inch.....	105-7794-03
Blade-Low Flow, 18 inch .....	105-7795-03
Blade-Atomic, 18 inch.....	105-7796-03
Deck Lift Assist Kit .....	106-9749
Recycler Kit .....	107-1610
Suspension Kit for Standard Seat .....	107-1892
Z Stand Kit .....	107-8599
Blade-Hi Flow, 18 inch (6 Pack) .....	108-1117
Blade-Atomic, 18 inch (6 Pack).....	108-1118
Mower Deck Lift Assist Kit .....	108-4090
Blade-Lo Flow, 18 inch (6 Pack) .....	110-0406
Blade-Recycler, 18 inch (6 Pack).....	110-0408
Blade-Med Flow, 18 inch (6 Pack) .....	110-0409
Bimini Sunshade.....	110-5726
Semi Pnuematic Wheel Assembly .....	110-5745
Discharge Side Anti-Scalp Roller Kit.....	112-1792
Channel Reinforcement Kit.....	112-8673
DFS Vac Collection System .....	78510
Chute Gate Kit .....	78521
Deluxe Suspension Seat Kit .....	78530
Twin Bag Assembly .....	78532
Blower and Drive Kit .....	78537
Hitch Kit .....	99-8924

**Notes:**

**Notes:**

**Notes:**



**Count on it.**