



Groomer Quick Up Kit

Greensmaster® Flex™ 21, Flex 18, Flex 2100, and Flex 1800

Model No. 120-9661

Installation Instructions

1. Remove the roll pin securing the adjusting screw to the lift arm assembly (Figure 1).
2. Remove the adjusting screw from the lift arm assembly (Figure 1).
4. Thread the new adjusting screw into the lift arm assembly (Figure 2).
5. Secure the adjusting screw to the lift arm assembly with a roll pin (Figure 2).
6. Apply Loctite 242 or equivalent to the set screw and secure the lift arm to the adjusting nut (Figure 2).
7. Repeat the procedure on the opposite end of groomer.
8. Pull the lift arms forward to raise the groomer.

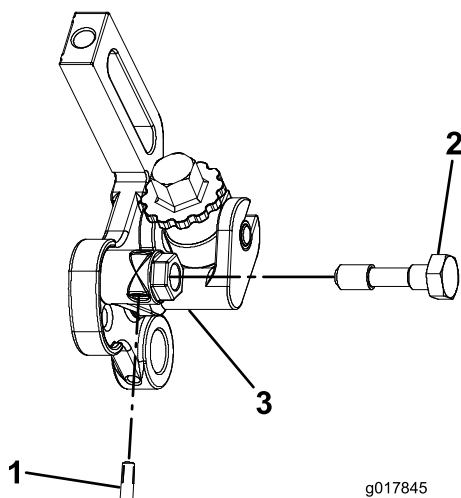


Figure 1

(Your model may vary slightly)

- | | |
|--------------------|----------------------|
| 1. Roll pin | 3. Lift arm assembly |
| 2. Adjusting screw | |

3. Insert the new lift arm onto the adjusting nut (Figure 2). Position the lift arm and set screw hole forward.

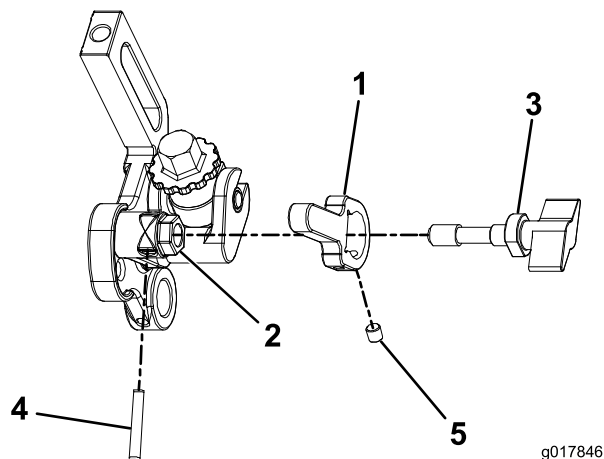


Figure 2

- | | |
|--------------------|--------------|
| 1. Lift arm | 4. Roll pin |
| 2. Adjusting nut | 5. Set screw |
| 3. Adjusting screw | |