



Count on it.

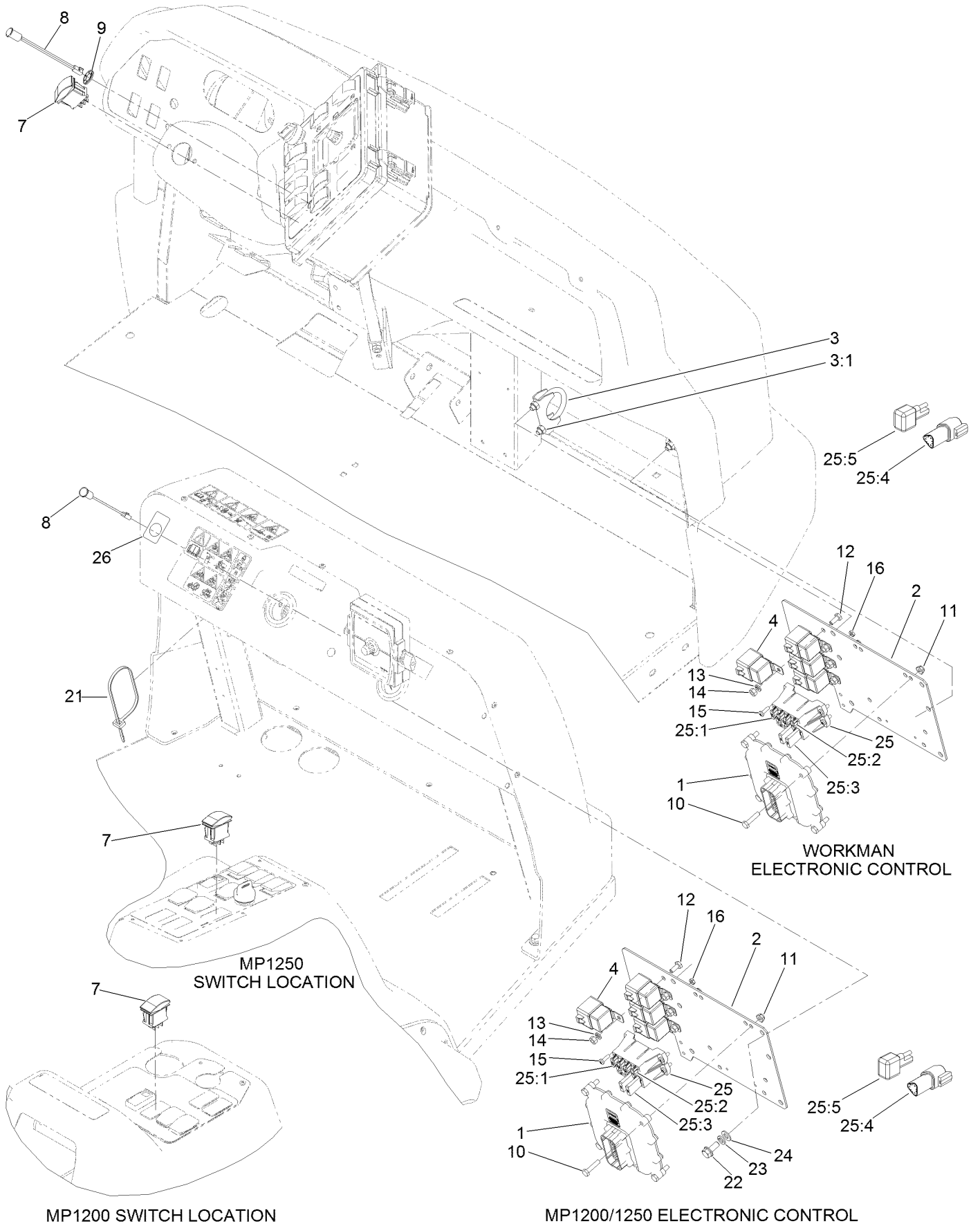
Parts Catalog

Sonic Boom™ Kit

**2010 and After Multi-Pro® Turf Sprayers and
Workman® 200 Spray System**

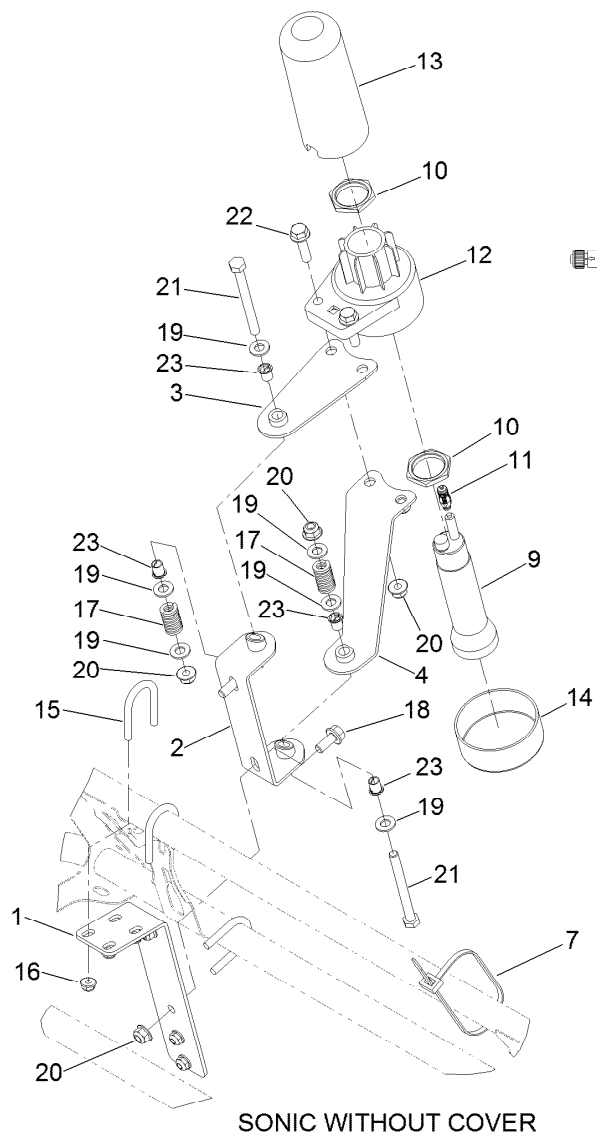
Model No. 41218—Serial No. 311000001 and Up

Electronic Control Assembly

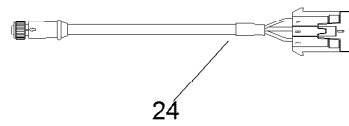


Electronic Control Assembly (continued)

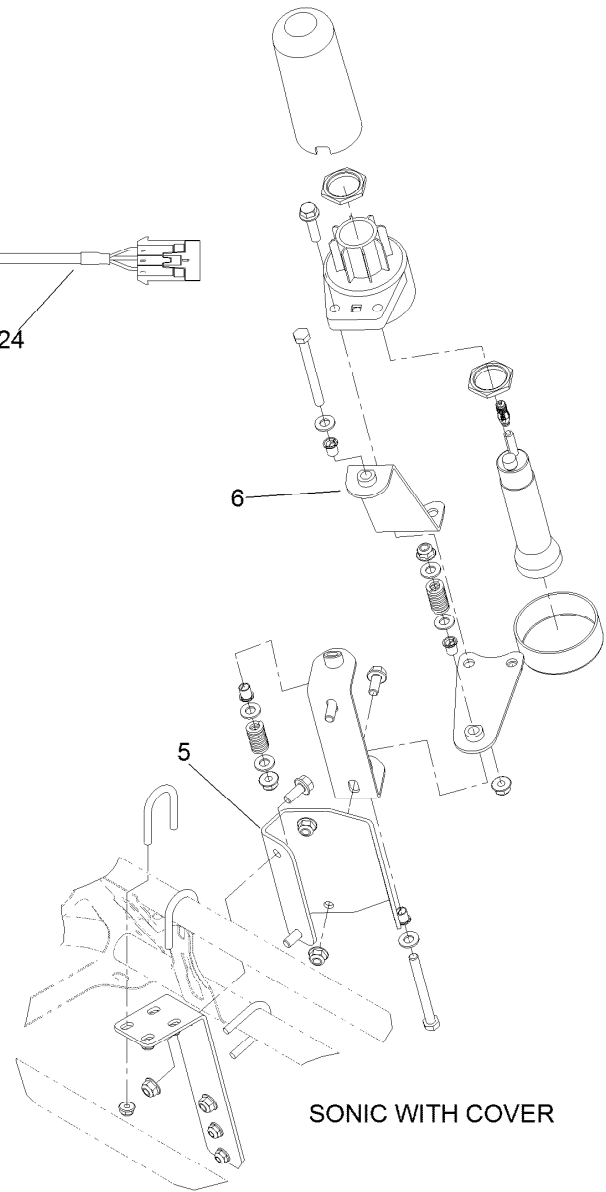
<i>Ref.</i>	<i>Part Number</i>	<i>Qty.</i>	<i>Description</i>	<i>Ref.</i>	<i>Part Number</i>	<i>Qty.</i>	<i>Description</i>
1	114-3321	1	Controller-Tec	15	3290-500	4	Screw-PPH
2	94-8564-03	1	Plate-Mount, Ecu	16	3217-26	4	Nut-Hex
3	2112-6	2	Clamp-Muffler	21	3290-378	10	Tie-Cable
3:1	3218-2	2	Nut-Jam	22	3234-47	2	Screw-HHF
4	99-7430	4	Relay	23	3253-4	2	Washer-Lock
7	100-8490	1	Switch-Rocker	24	3256-23	2	Washer-Flat
8	95-7652	1	Light-Indicator	25	119-5795	1	Harness-Wire, Sonic Boom
9	1-323142	1	Nut-Push	25:1	114241	3	Fuse-Blade, 7.5 Amp
10	321-7	4	Screw-HH	25:2	94-6710	1	Fuse-2 Amp
11	104-7201	4	Nut-HF	25:3	95-3287	2	Breaker-Circuit, 30A
12	321-3	4	Screw-HH	25:4	32180-043	2	Resistor-120 Ohm
13	3253-3	4	Washer-Lock	25:5	108-9493	2	Diode-Tvs
14	3217-5	4	Nut-Hex	26	94-8582	1	Decal



SONIC WITHOUT COVER



24



SONIC WITH COVER

Sonic Sensor Assembly

Ref.	Part Number	Qty.	Description
1	120-8589-03	2	Bracket-Tube
2	120-0608-03	2	Hinge ASM
3	120-0611-03	2	Strap ASM
4	120-0613-03	2	Strap ASM
5	120-0757-03	2	Bracket-Tube
6	120-0799-03	2	Strap ASM
7	3290-378	12	Tie-Cable
9	117-8114	2	Sensor-Sonic
10	120-0647	4	Nut
11	120-0648	2	Plug-Programming
12	120-0646	2	Housing-Lower, Ultrasonic Sensor
13	120-0645	2	Cover-Sensor, Ultrasonic

Ref.	Part Number	Qty.	Description
14	120-0772	2	Cap-Tube
15	92-0010	6	U-Bolt
16	104-7201	12	Nut-HF
17	110-5331	4	Spring-Compression
18	3234-47	8	Screw-HHF
19	3256-23	12	Washer-Flat
20	104-8300	18	Nut-Flange, NI
21	322-20	4	Screw-HH
22	3234-36	4	Screw-HHF
23	120-0761	8	Bushing
24	117-8115	2	Cable-Ultrasonic Sensor, 4 Meter

Notes:

Notes:

Notes:



Count on it.